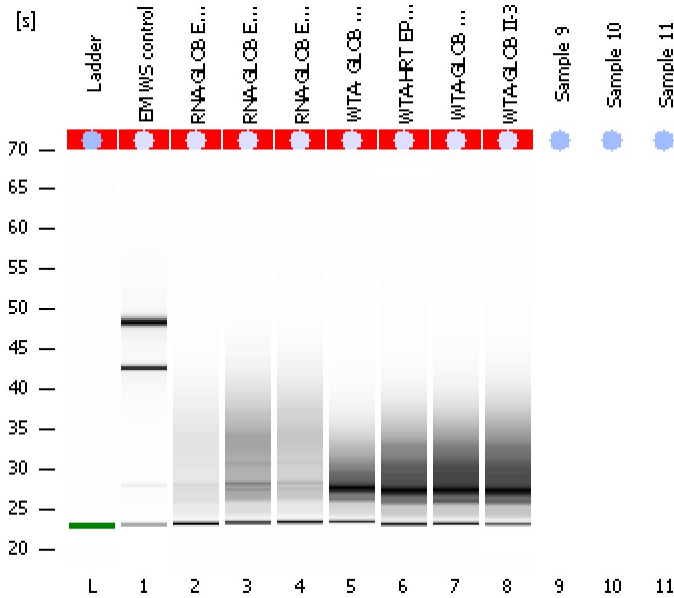


Assay Class: Eukaryote Total RNA Pico
 Data Path: C:\...ents and Settings\Bioanalyzer\2013-03-13\2013-03-13_001.xad

Created: 3/13/2013 2:09:11 PM
 Modified: 3/13/2013 2:27:53 PM

Electrophoresis File Run Summary



Instrument Information:

Instrument Name: DE13701086 Firmware: C.01.069
 Serial#: DE13701086 Type: G2938B

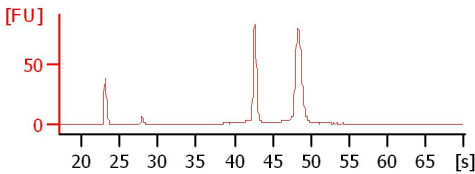
Assay Information:

Assay Origin Path: C:\Program Files\Agilent\2100 bioanalyzer\2100 expert\assays\RNA\Eukaryote Total RNA Pico Series II.xsy
 Assay Class: Eukaryote Total RNA Pico
 Version: 2.6
 Assay Comments: Total RNA Analysis pg sensitivity (Eukaryote)
 © Copyright 2003 - 2009 Agilent Technologies, Inc.

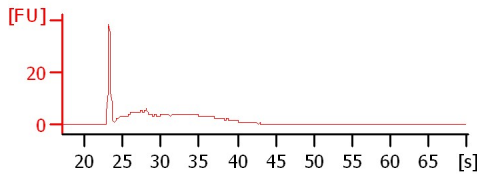
Chip Information:

Chip Lot #:
 Reagent Kit Lot #:
 Chip Comments:

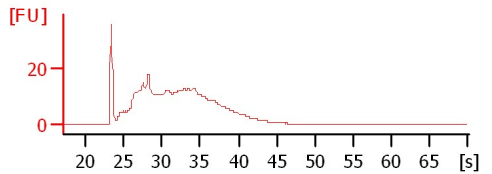
EM WS control
 RIN: 9.80



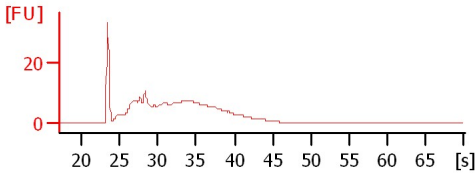
RNA-GLOB EPD-1-10 (1/5)
 RIN: 1.90



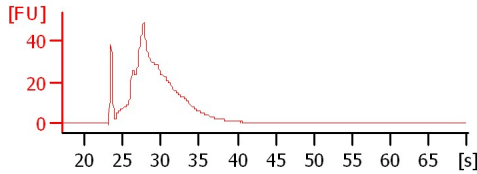
RNA-GLOB EPD 11-56 (1/5)
 RIN: 2.30



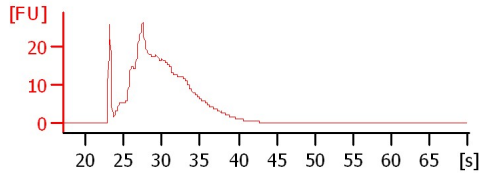
RNA-GLOB EPD 54-66 (1/5)
 RIN: 2.30



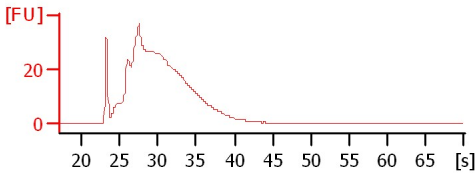
WTA- GLOB EP-3
 RIN: 2.30



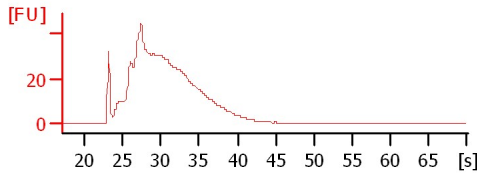
WTA-HRT EPD-2
 RIN: 2.20



WTA-GLOB OI-1
 RIN: 2.20



WTA-GLOB II-3
 RIN: 2.10



Assay Class: Eukaryote Total RNA Pico
Data Path: C:\...ents and Settings\Bioanalyzer\2013-03-13\2013-03-13_001.xad

Created: 3/13/2013 2:09:11 PM
Modified: 3/13/2013 2:27:53 PM

Electrophoresis File Run Summary (Chip Summary)

Sample Name	Sample Comment	Status	Result Label	Result Color
EM WS control		✓	RIN: 9.80	
RNA-GLOB EPD-1-10 (1/5)		✓	RIN: 1.90	
RNA-GLOB EPD 11-56 (1/5)		✓	RIN: 2.30	
RNA-GLOB EPD 54-66 (1/5)		✓	RIN: 2.30	
WTA- GLOB EP-3		✓	RIN: 2.30	
WTA-HRT EPD-2		✓	RIN: 2.20	
WTA-GLOB OI-1		✓	RIN: 2.20	
WTA-GLOB II-3		✓	RIN: 2.10	
Sample 9				
Sample 10				
Sample 11				
Ladder		✓	All Other Samples	

Chip Lot #

Reagent Kit Lot #

Chip Comments :

Assay Class: Eukaryote Total RNA Pico
Data Path: C:\...ents and Settings\Bioanalyzer\2013-03-13\2013-03-13_001.xad

Created: 3/13/2013 2:09:11 PM
Modified: 3/13/2013 2:27:53 PM

Electrophoresis Assay Details

General Analysis Settings

Number of Available Sample and Ladder Wells (Max.) : 12
Minimum Visible Range [s] : 17
Maximum Visible Range [s] : 70
Start Analysis Time Range [s] : 18
End Analysis Time Range [s] : 69
Ladder Concentration [pg/ μ l] : 1000
Lower Marker Concentration [pg/ μ l] : 0
Upper Marker Concentration [pg/ μ l] : 0
Used Lower Marker for Quantitation
Standard Curve Fit is Logarithmic
Show Data Aligned to Lower Marker

Integrator Settings

Integration Start Time [s] : 18
Integration End Time [s] : 69
Slope Threshold : 0.6
Height Threshold [FU] : 0.5
Area Threshold : 0.2
Width Threshold [s] : 0.3
Baseline Plateau [s] : 6

Filter Settings

Filter Width [s] : 0.5
Polynomial Order : 4

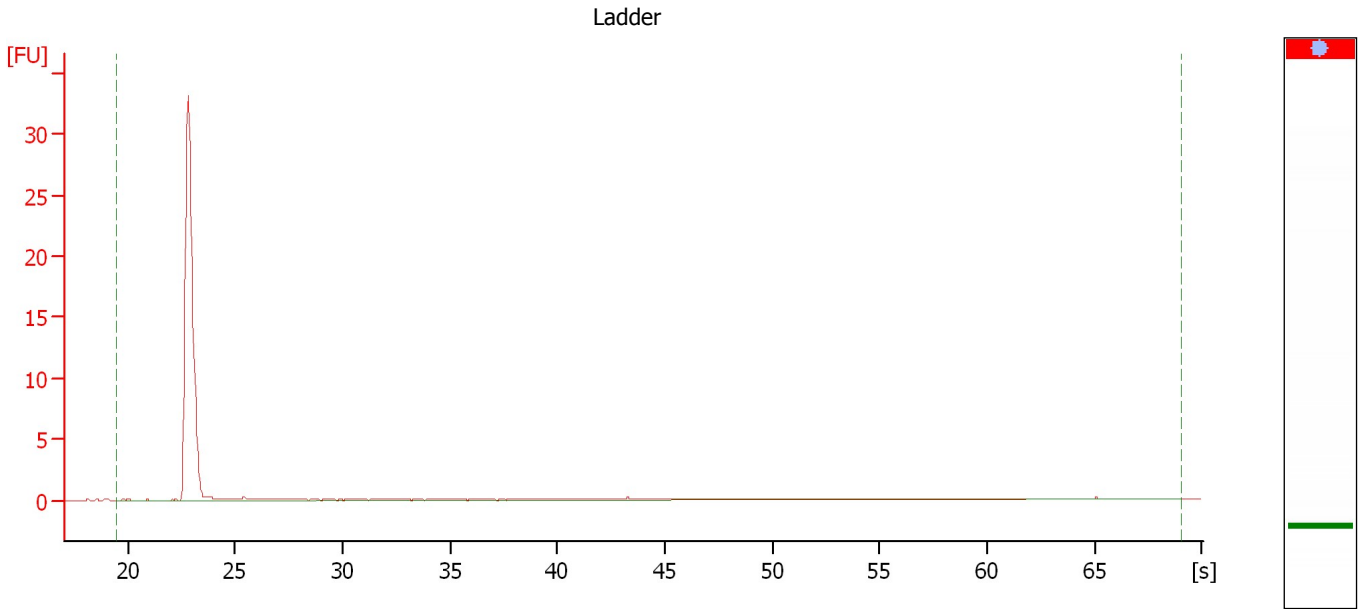
Ladder

Ladder Peak	Size
1	25
2	200
3	500
4	1000
5	2000
6	4000

Assay Class: Eukaryote Total RNA Pico
Data Path: C:\...ents and Settings\Bioanalyzer\2013-03-13\2013-03-13_001.xad

Created: 3/13/2013 2:09:11 PM
Modified: 3/13/2013 2:27:53 PM

Electropherogram Summary



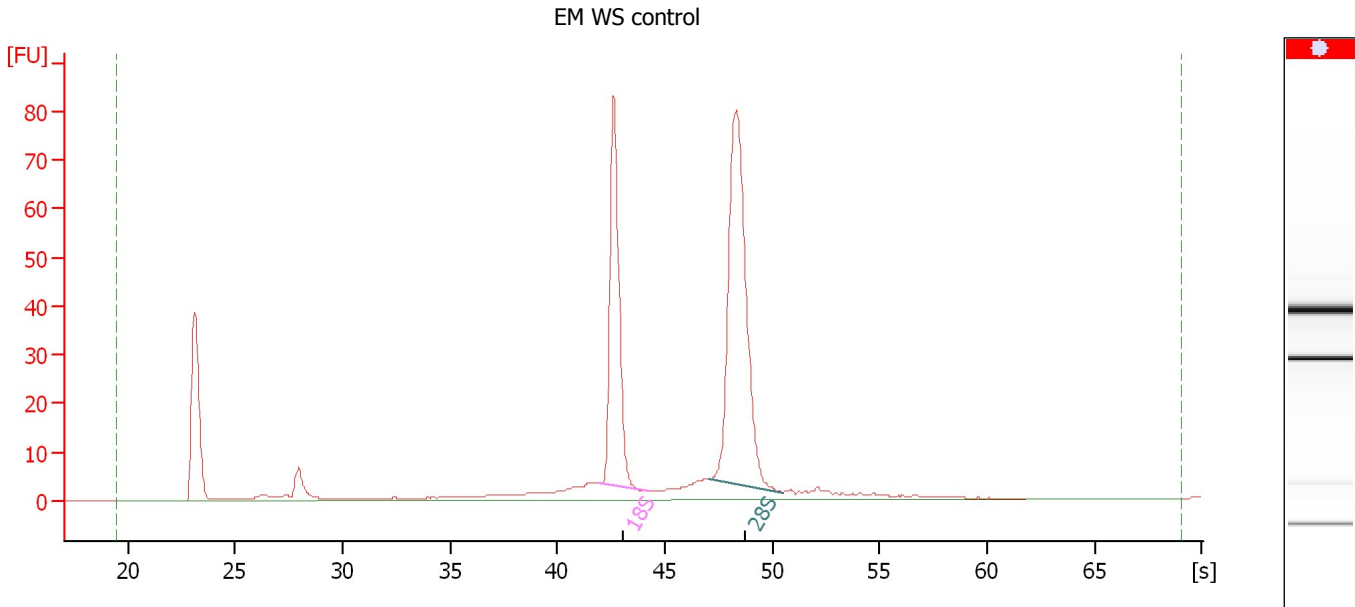
Overall Results for Ladder

RNA Area:	2.3	Result Flagging Color:	
RNA Concentration:	1,000 pg/ μ l	Result Flagging Label:	All Other Samples

Assay Class: Eukaryote Total RNA Pico
Data Path: C:\...ents and Settings\Bioanalyzer\2013-03-13\2013-03-13_001.xad

Created: 3/13/2013 2:09:11 PM
Modified: 3/13/2013 2:27:53 PM

Electropherogram Summary Continued ...



Overall Results for sample 1 : EM WS control

RNA Area: 421.8 RNA Integrity Number (RIN): 9.8 (B.02.08)
RNA Concentration: 183,866 pg/ μ l Result Flagging Color:
rRNA Ratio [28s / 18s]: 1.6 Result Flagging Label: RIN: 9.80

Fragment table for sample 1 : EM WS control

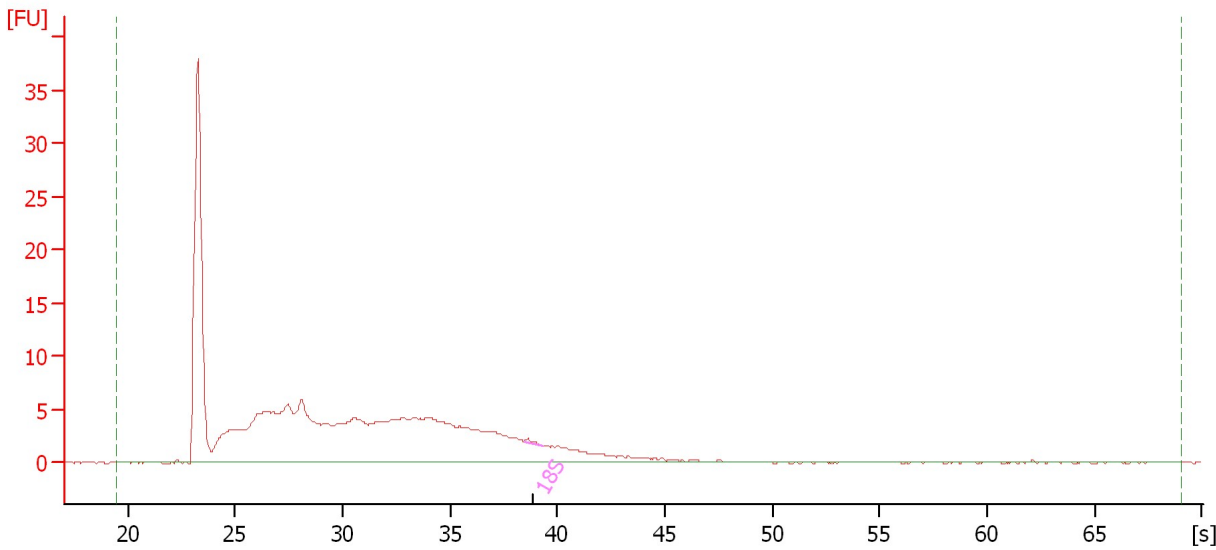
Name	Start Time [s]	End Time [s]	Area	% of total Area
18S	41.95	44.20	92.8	22.0
28S	47.05	50.45	150.5	35.7

Assay Class: Eukaryote Total RNA Pico
 Data Path: C:\...ents and Settings\Bioanalyzer\2013-03-13\2013-03-13_001.xad

Created: 3/13/2013 2:09:11 PM
 Modified: 3/13/2013 2:27:53 PM

Electropherogram Summary Continued ...

RNA-GLOB EPD-1-10 (1/5)



Overall Results for sample 2 : RNA-GLOB EPD-1-10 (1/5)

RNA Area:	253.9	RNA Integrity Number (RIN):	1.9 (B.02.08)
RNA Concentration:	110,658 pg/μl	Result Flagging Color:	
rRNA Ratio [28s / 18s]:	0.0	Result Flagging Label:	RIN: 1.90

Fragment table for sample 2 : RNA-GLOB EPD-1-10 (1/5)

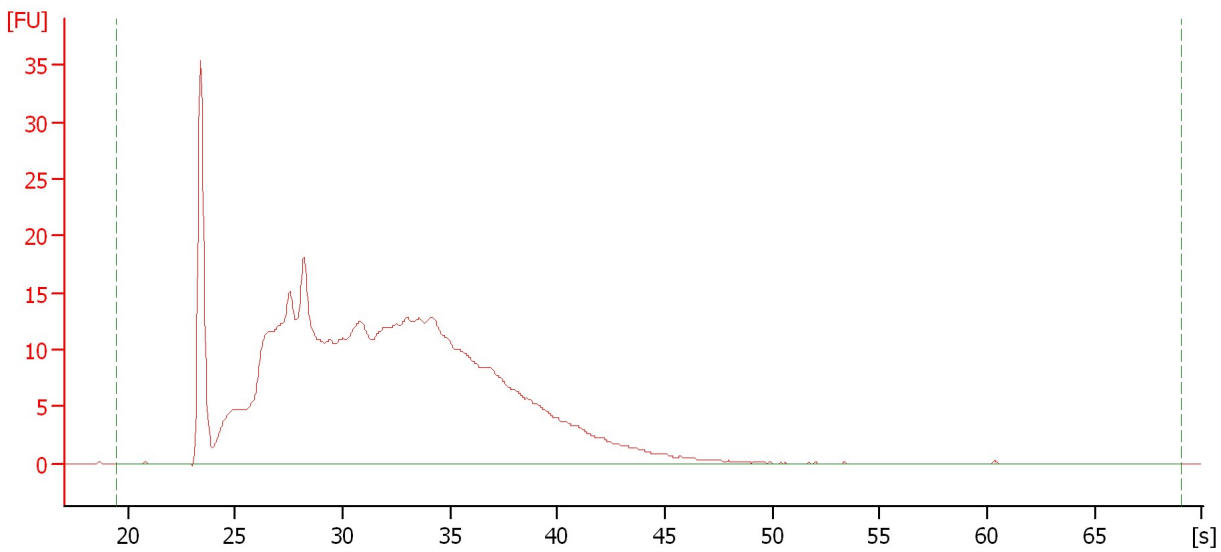
Name	Start Time [s]	End Time [s]	Area	% of total Area
18S	38.45	39.30	0.4	0.1

Assay Class: Eukaryote Total RNA Pico
Data Path: C:\...ents and Settings\Bioanalyzer\2013-03-13\2013-03-13_001.xad

Created: 3/13/2013 2:09:11 PM
Modified: 3/13/2013 2:27:53 PM

Electropherogram Summary Continued ...

RNA-GLOB EPD 11-56 (1/5)



Overall Results for sample 3 : RNA-GLOB EPD 11-56 (1/5)

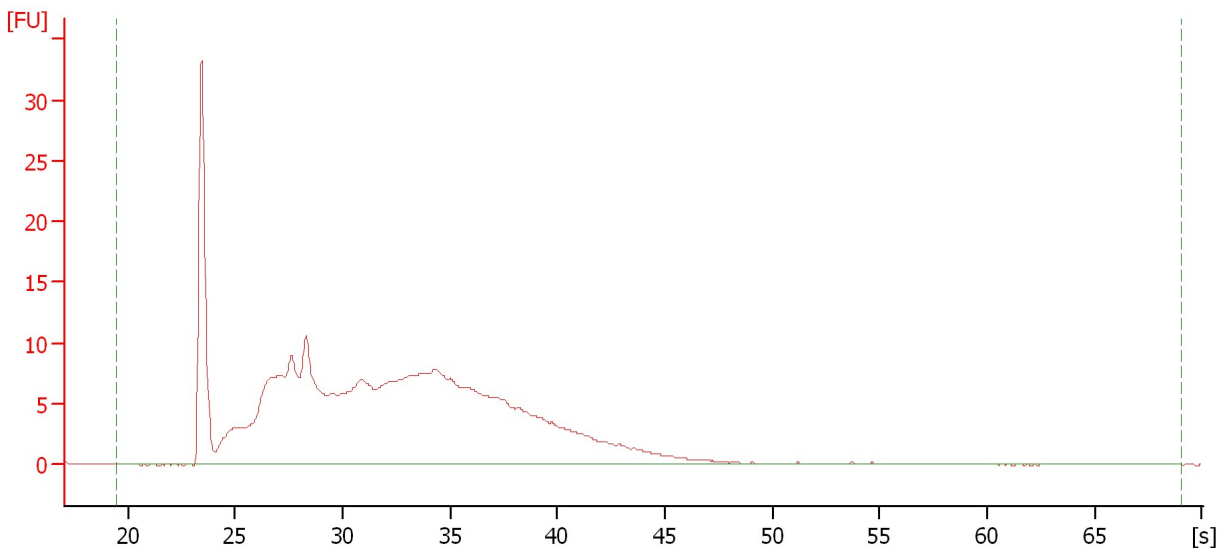
RNA Area:	573.8	RNA Integrity Number (RIN):	2.3 (B.02.08)
RNA Concentration:	250,123 pg/ μ l	Result Flagging Color:	
rRNA Ratio [28s / 18s]:	0.0	Result Flagging Label:	RIN: 2.30

Assay Class: Eukaryote Total RNA Pico
Data Path: C:\...ents and Settings\Bioanalyzer\2013-03-13\2013-03-13_001.xad

Created: 3/13/2013 2:09:11 PM
Modified: 3/13/2013 2:27:53 PM

Electropherogram Summary Continued ...

RNA-GLOB EPD 54-66 (1/5)



Overall Results for sample 4 : RNA-GLOB EPD 54-66 (1/5)

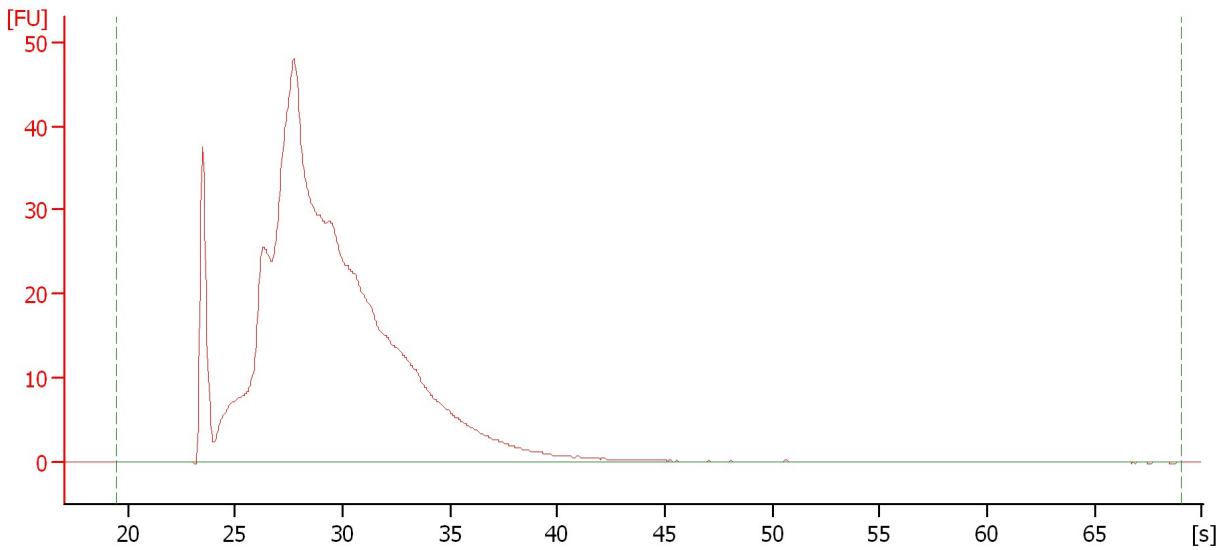
RNA Area:	372.9	RNA Integrity Number (RIN):	2.3 (B.02.08)
RNA Concentration:	162,553 pg/ μ l	Result Flagging Color:	
rRNA Ratio [28s / 18s]:	0.0	Result Flagging Label:	RIN: 2.30

Assay Class: Eukaryote Total RNA Pico
Data Path: C:\...ents and Settings\Bioanalyzer\2013-03-13\2013-03-13_001.xad

Created: 3/13/2013 2:09:11 PM
Modified: 3/13/2013 2:27:53 PM

Electropherogram Summary Continued ...

WTA- GLOB EP-3



Overall Results for sample 5 : WTA- GLOB EP-3

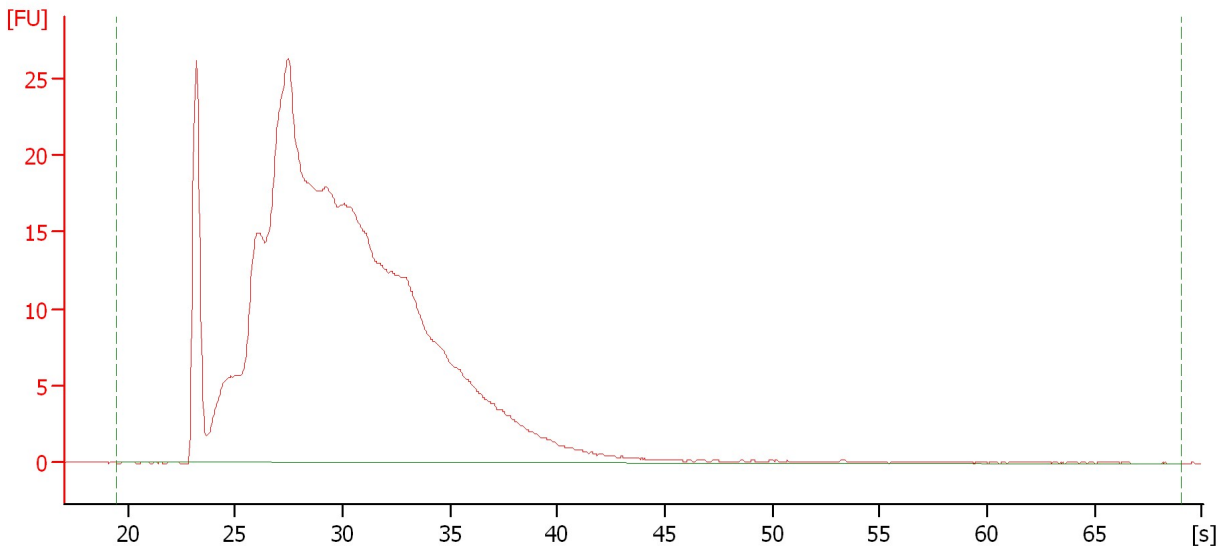
RNA Area:	824.1	RNA Integrity Number (RIN):	2.3 (B.02.08)
RNA Concentration:	359,227 pg/ μ l	Result Flagging Color:	
rRNA Ratio [28s / 18s]:	0.0	Result Flagging Label:	RIN: 2.30

Assay Class: Eukaryote Total RNA Pico
Data Path: C:\...ents and Settings\Bioanalyzer\2013-03-13\2013-03-13_001.xad

Created: 3/13/2013 2:09:11 PM
Modified: 3/13/2013 2:27:53 PM

Electropherogram Summary Continued ...

WTA-HRT EPD-2



Overall Results for sample 6 : WTA-HRT EPD-2

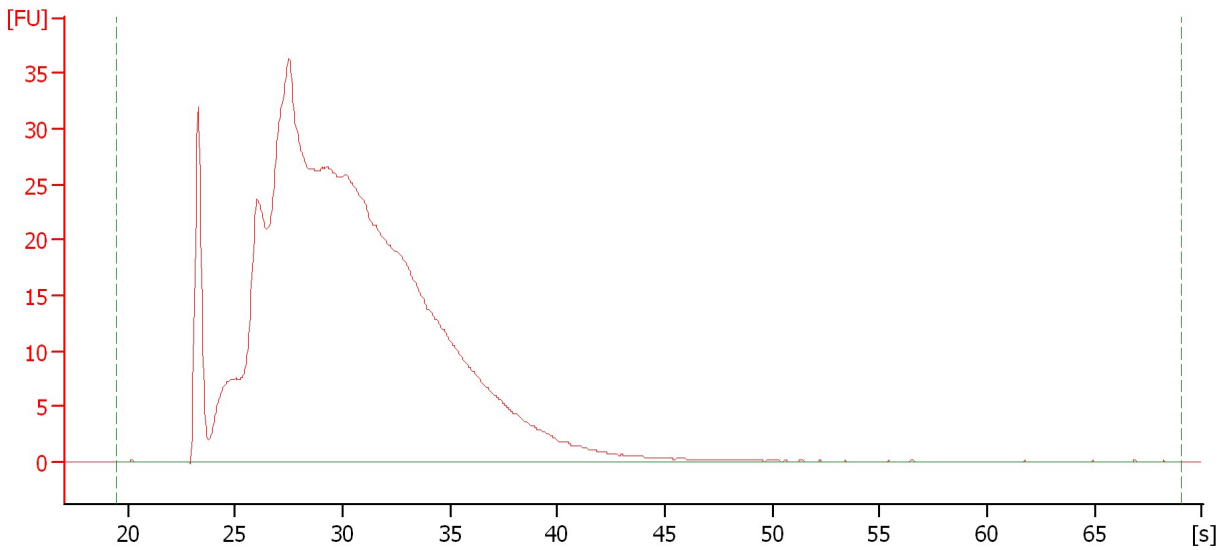
RNA Area:	611.1	RNA Integrity Number (RIN):	2.2 (B.02.08)
RNA Concentration:	266,350 pg/μl	Result Flagging Color:	
rRNA Ratio [28s / 18s]:	0.0	Result Flagging Label:	RIN: 2.20

Assay Class: Eukaryote Total RNA Pico
Data Path: C:\...ents and Settings\Bioanalyzer\2013-03-13\2013-03-13_001.xad

Created: 3/13/2013 2:09:11 PM
Modified: 3/13/2013 2:27:53 PM

Electropherogram Summary Continued ...

WTA-GLOB OI-1



Overall Results for sample 7 : WTA-GLOB OI-1

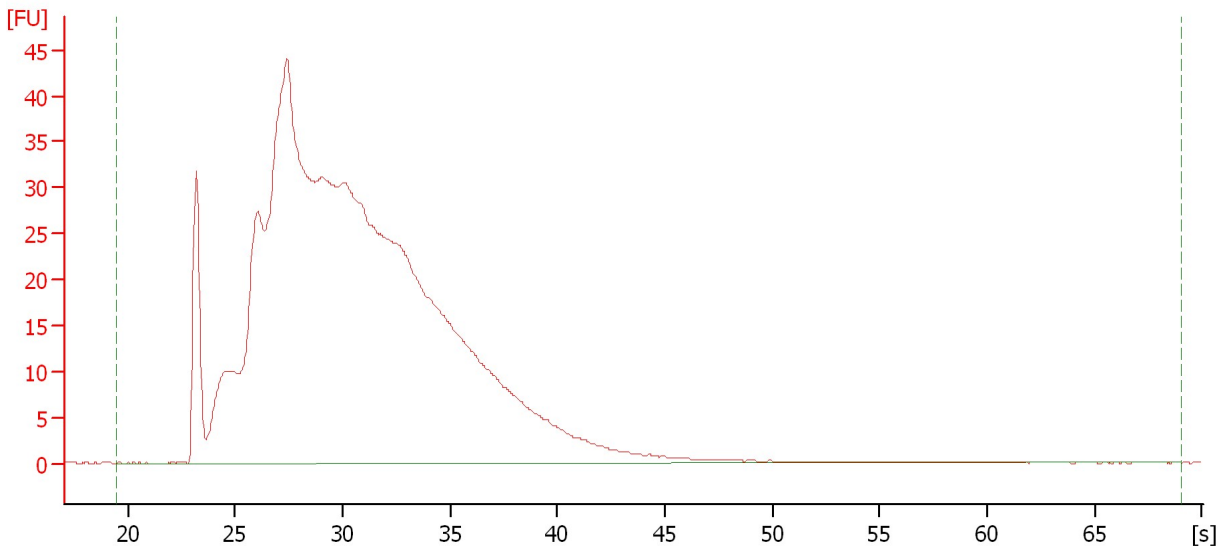
RNA Area:	894.1	RNA Integrity Number (RIN):	2.2 (B.02.08)
RNA Concentration:	389,724 pg/μl	Result Flagging Color:	
rRNA Ratio [28s / 18s]:	0.0	Result Flagging Label:	RIN: 2.20

Assay Class: Eukaryote Total RNA Pico
Data Path: C:\...ents and Settings\Bioanalyzer\2013-03-13\2013-03-13_001.xad

Created: 3/13/2013 2:09:11 PM
Modified: 3/13/2013 2:27:53 PM

Electropherogram Summary Continued ...

WTA-GLOB II-3



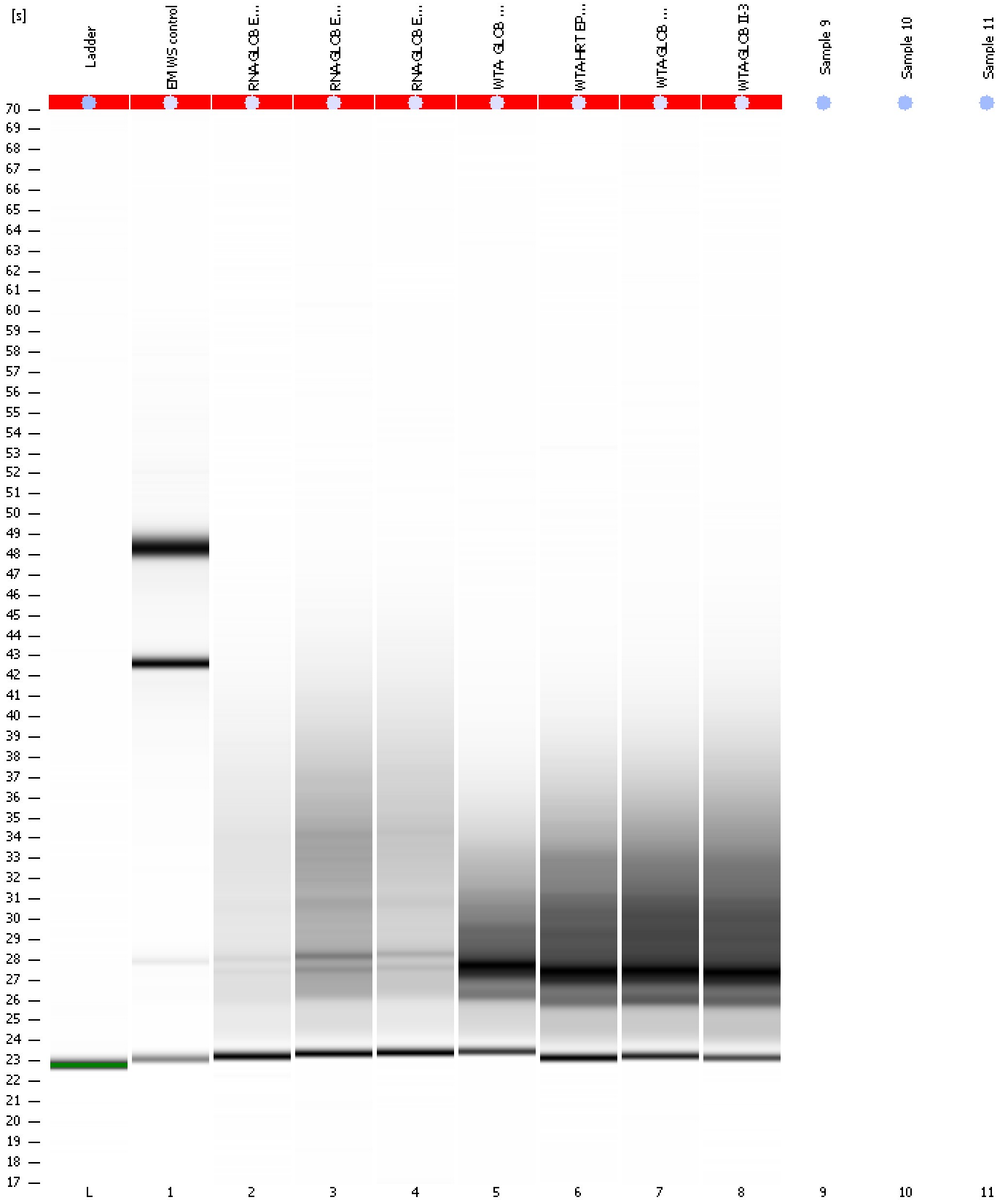
Overall Results for sample 8 : WTA-GLOB II-3

RNA Area:	1,122.1	RNA Integrity Number (RIN):	2.1 (B.02.08)
RNA Concentration:	489,119 pg/ μ l	Result Flagging Color:	
rRNA Ratio [28s / 18s]:	0.0	Result Flagging Label:	RIN: 2.10

Assay Class: Eukaryote Total RNA Pico
Data Path: C:\...ents and Settings\Bioanalyzer\2013-03-13\2013-03-13_001.xad

Created: 3/13/2013 2:09:11 PM
Modified: 3/13/2013 2:27:53 PM

Gel Image



Assay Class: Eukaryote Total RNA Pico
Data Path: C:\...ents and Settings\Bioanalyzer\2013-03-13\2013-03-13_001.xad

Created: 3/13/2013 2:09:11 PM
Modified: 3/13/2013 2:27:53 PM

Invalid Samples

Sample 9 has not been run, no results available.

Sample 10 has not been run, no results available.

Sample 11 has not been run, no results available.

Assay Class: Eukaryote Total RNA Pico
 Data Path: C:\...ents and Settings\Bioanalyzer\2013-03-13\2013-03-13_001.xad

Created: 3/13/2013 2:09:11 PM
 Modified: 3/13/2013 2:27:53 PM

Run Logbook

Description	Number	Source	Category	Sub Category	Time	Time Zone	User	Host
Run ended on port 1 (Number of wells acquired: 9)		Instrument	Run		3/13/2013 2:27:47 PM	(GMT --07:00) Pacific Standard Time	UC Davis	D8XSMGH1
Run started on port 1 (File: C:\Documents and Settings\Bioanalyzer\2013-03-13\2013-03-13_001.xad)		Instrument	Run		3/13/2013 2:09:16 PM	(GMT --07:00) Pacific Standard Time	UC Davis	D8XSMGH1
Product Number : G2938B		Instrument	Run		3/13/2013 2:09:16 PM	(GMT --07:00) Pacific Standard Time	UC Davis	D8XSMGH1
Name :		Instrument	Run		3/13/2013 2:09:16 PM	(GMT --07:00) Pacific Standard Time	UC Davis	D8XSMGH1
Vendor : Agilent Technologies		Instrument	Run		3/13/2013 2:09:16 PM	(GMT --07:00) Pacific Standard Time	UC Davis	D8XSMGH1
Serial# : DE13701086		Instrument	Run		3/13/2013 2:09:16 PM	(GMT --07:00) Pacific Standard Time	UC Davis	D8XSMGH1
Firmware : C.01.069		Instrument	Run		3/13/2013 2:09:16 PM	(GMT --07:00) Pacific Standard Time	UC Davis	D8XSMGH1
Cartridge : Electrode		Instrument	Run		3/13/2013 2:09:16 PM	(GMT --07:00) Pacific Standard Time	UC Davis	D8XSMGH1