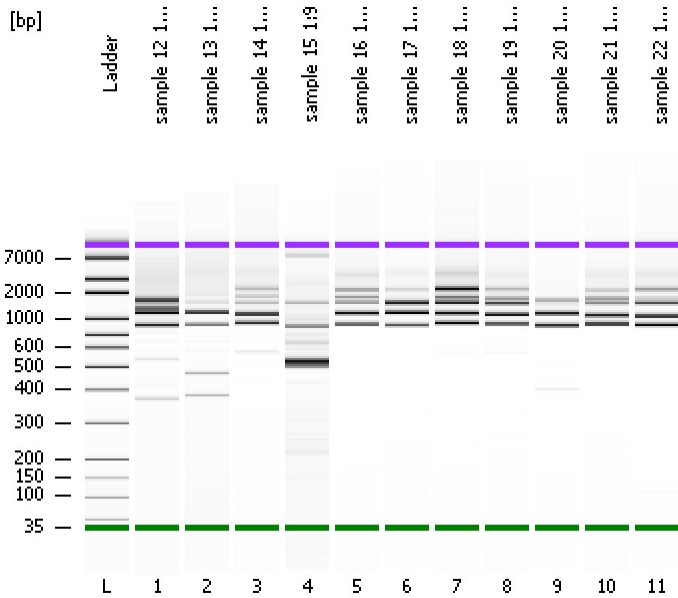


Assay Class: High Sensitivity DNA Assay
Data Path: C:\...ents and Settings\Bioanalyzer\2013-04-01\2013-04-01_004.xad

Created: 4/1/2013 1:24:14 PM
Modified: 4/1/2013 4:08:01 PM

Electrophoresis File Run Summary



Instrument Information:

Instrument Name: DE13701086 Firmware: C.01.069
Serial#: DE13701086 Type: G2938B

Assay Information:

Assay Origin Path: C:\Program Files\Agilent\2100 bioanalyzer\2100 expert\assays\dsDNA\High Sensitivity DNA.xsy
Assay Class: High Sensitivity DNA Assay
Version: 1.03
Assay Comments: Copyright © 2003-2010 Agilent Technologies

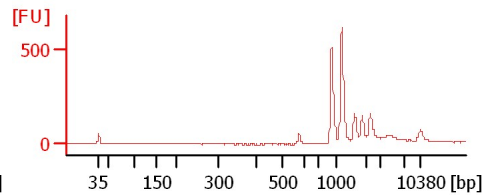
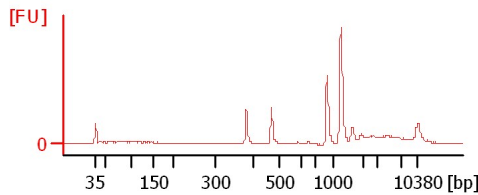
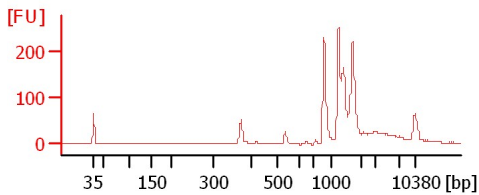
Chip Information:

Chip Lot #:
Reagent Kit Lot #:
Chip Comments:

sample 12 1:14

sample 13 1:11

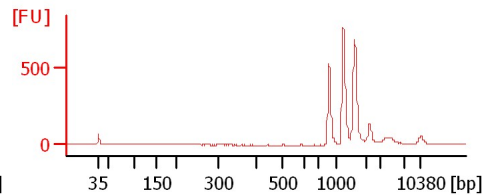
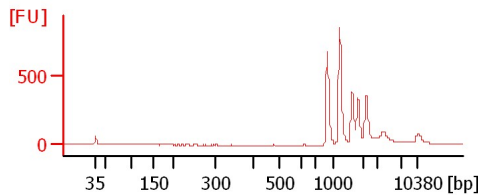
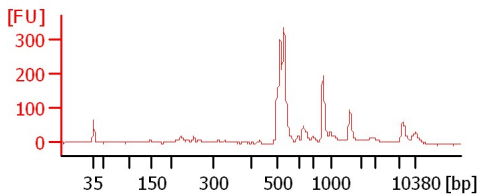
sample 14 1:22



sample 15 1:9

sample 16 1:26

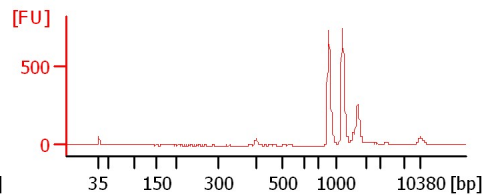
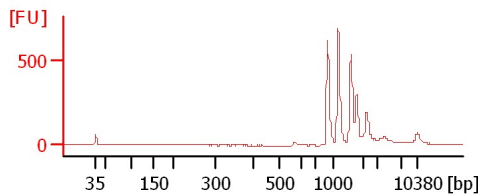
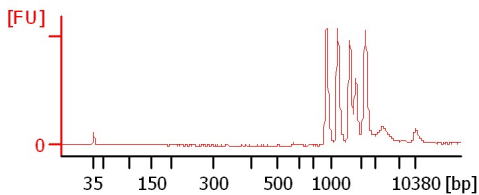
sample 17 1:20



sample 18 1:26

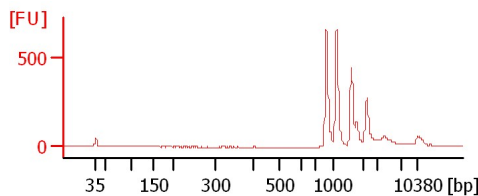
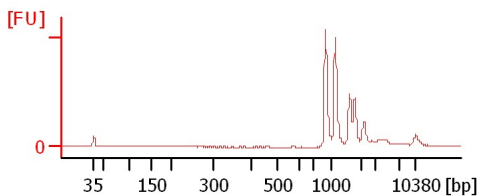
sample 19 1:26

sample 20 1:20



sample 21 1:24

sample 22 1:24



Assay Class: High Sensitivity DNA Assay
Data Path: C:\...ents and Settings\Bioanalyzer\2013-04-01\2013-04-01_004.xad

Created: 4/1/2013 1:24:14 PM
Modified: 4/1/2013 4:08:01 PM

Electrophoresis File Run Summary (Chip Summary)

Sample Name	Sample Comment	Rest. Digest	Status	Observation	Result Label	Result Color
sample 12 1:14		<input type="checkbox"/>	✓			
sample 13 1:11		<input type="checkbox"/>	✓			
sample 14 1:22		<input type="checkbox"/>	✓			
sample 15 1:9		<input type="checkbox"/>	✓			
sample 16 1:26		<input type="checkbox"/>	✓			
sample 17 1:20		<input type="checkbox"/>	✓			
sample 18 1:26		<input type="checkbox"/>	✓			
sample 19 1:26		<input type="checkbox"/>	✓			
sample 20 1:20		<input type="checkbox"/>	✓			
sample 21 1:24		<input type="checkbox"/>	✓			
sample 22 1:24		<input type="checkbox"/>	✓			
Ladder		<input type="checkbox"/>	✓			

Chip Lot #

Reagent Kit Lot #

Chip Comments :

Assay Class: High Sensitivity DNA Assay
Data Path: C:\...ents and Settings\Bioanalyzer\2013-04-01\2013-04-01_004.xad

Created: 4/1/2013 1:24:14 PM
Modified: 4/1/2013 4:08:01 PM

Electrophoresis Assay Details

General Analysis Settings

Number of Available Sample and Ladder Wells (Max.) : 12
Minimum Visible Range [s] : 32
Maximum Visible Range [s] : 138
Start Analysis Time Range [s] : 33
End Analysis Time Range [s] : 137.5
Ladder Concentration [pg/μl] : 1950
Uses Standard Area for Ladder Fragments
Lower Marker Concentration [pg/μl] : 125
Upper Marker Concentration [pg/μl] : 75
Used Upper Marker for Quantitation
Standard Curve Fit is Point to Point
Show Data Aligned to Lower and Upper Marker

Integrator Settings

Integration Start Time [s] : 33.05
Integration End Time [s] : 137
Slope Threshold : 0.8
Height Threshold [FU] : 5
Area Threshold : 0.1
Width Threshold [s] : 0.6
Baseline Plateau [s] : 0.5

Filter Settings

Filter Width [s] : 0.5
Polynomial Order : 4

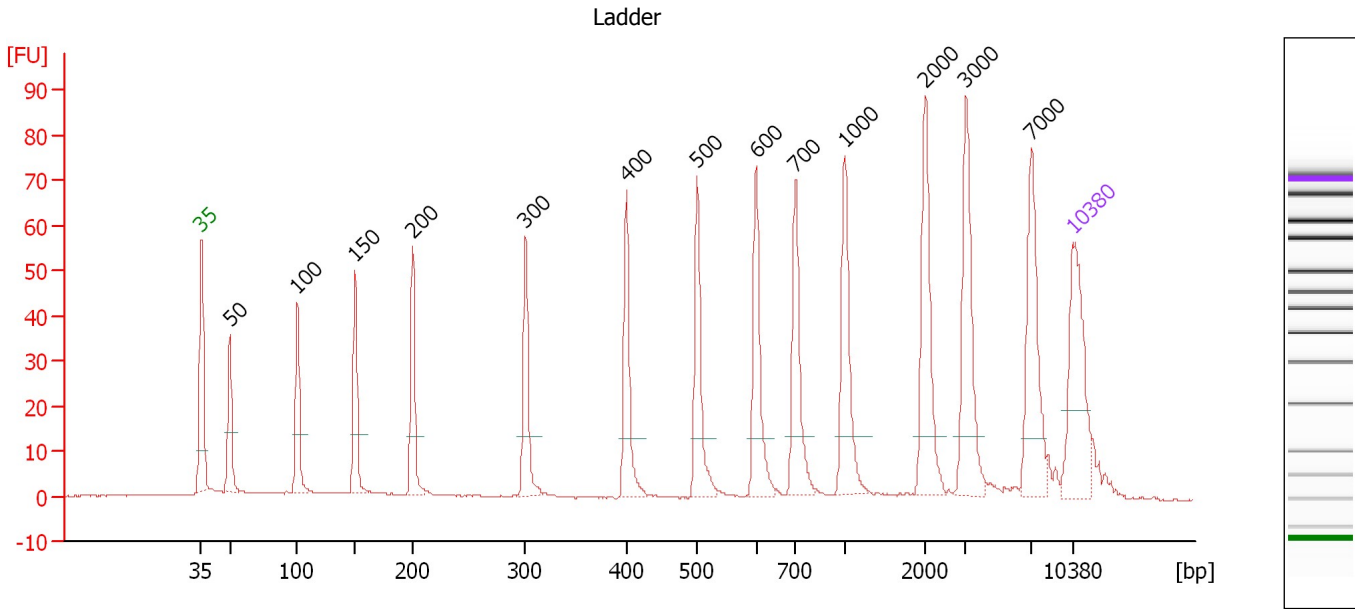
Ladder

Ladder Peak	Size	Area
1	35	160
2	50	210
3	100	208
4	150	221
5	200	242
6	300	270
7	400	305
8	500	306
9	600	336
10	700	321
11	1000	366
12	2000	413
13	3000	411
14	7000	400
15	10380	214

Assay Class: High Sensitivity DNA Assay
 Data Path: C:\...ents and Settings\Bioanalyzer\2013-04-01\2013-04-01_004.xad

Created: 4/1/2013 1:24:14 PM
 Modified: 4/1/2013 4:08:01 PM

Electropherogram Summary



Overall Results for Ladder

Noise: 0.1

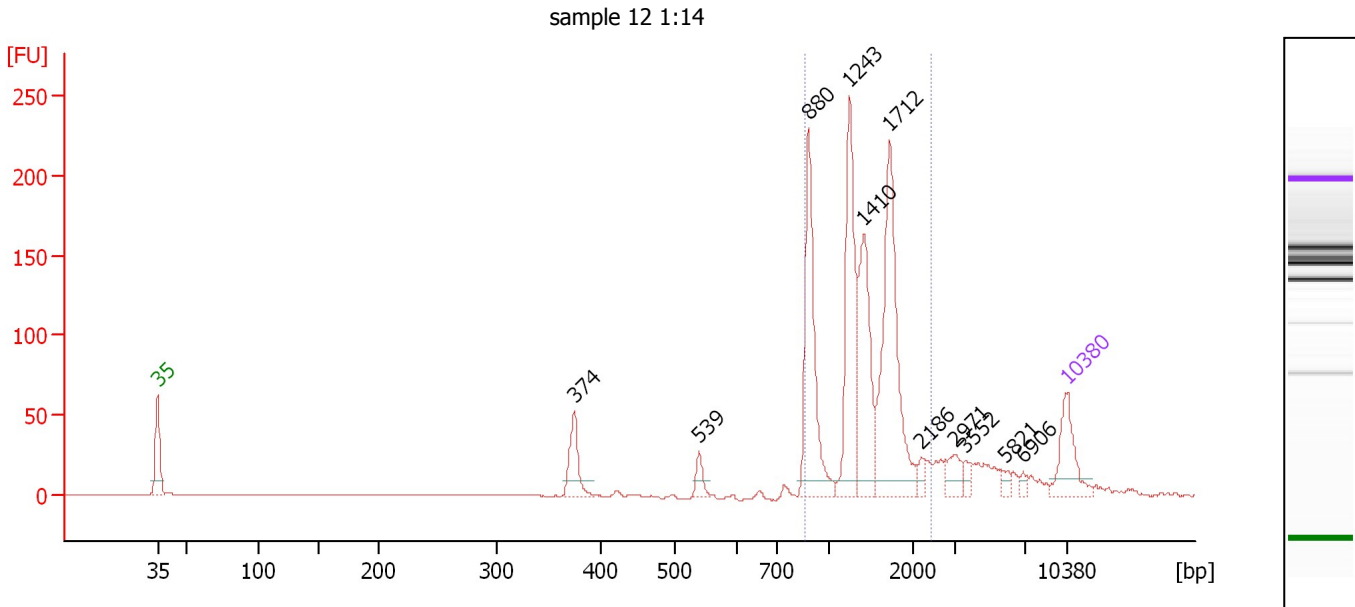
Peak table for Ladder

Peak	Size [bp]	Conc. [pg/μl]	Molarity [pmol/l]	Observations
1	35	125.00	5,411.3	Lower Marker
2	50	150.00	4,545.5	Ladder Peak
3	100	150.00	2,272.7	Ladder Peak
4	150	150.00	1,515.2	Ladder Peak
5	200	150.00	1,136.4	Ladder Peak
6	300	150.00	757.6	Ladder Peak
7	400	150.00	568.2	Ladder Peak
8	500	150.00	454.5	Ladder Peak
9	600	150.00	378.8	Ladder Peak
10	700	150.00	324.7	Ladder Peak
11	1,000	150.00	227.3	Ladder Peak
12	2,000	150.00	113.6	Ladder Peak
13	3,000	150.00	75.8	Ladder Peak
14	7,000	150.00	32.5	Ladder Peak
15	10,380	75.00	10.9	Upper Marker

Assay Class: High Sensitivity DNA Assay
 Data Path: C:\...ents and Settings\Bioanalyzer\2013-04-01\2013-04-01_004.xad

Created: 4/1/2013 1:24:14 PM
 Modified: 4/1/2013 4:08:01 PM

Electropherogram Summary Continued ...



Setpoint Deviations for sample 1 : sample 12 1:14

Height Threshold [FU] : 10

Overall Results for sample 1 : sample 12 1:14

Number of peaks found: 11 Corr. Area 1: 910.9
 Noise: 0.1

Peak table for sample 1 : sample 12 1:14

Peak	Size [bp]	Conc. [pg/μl]	Molarity [pmol/l]	Observations
1	35	125.00	5,411.3	Lower Marker
2	374	75.21	304.5	
3	539	24.61	69.2	
4	880	249.49	429.4	
5	1,243	226.90	276.6	
6	1,410	190.36	204.5	
7	1,712	298.55	264.3	
8	2,186	14.57	10.1	
9	2,971	32.39	16.5	
10	3,552	13.55	5.8	
11	5,821	9.91	2.6	
12	6,906	7.39	1.6	
13	10,380	75.00	10.9	Upper Marker

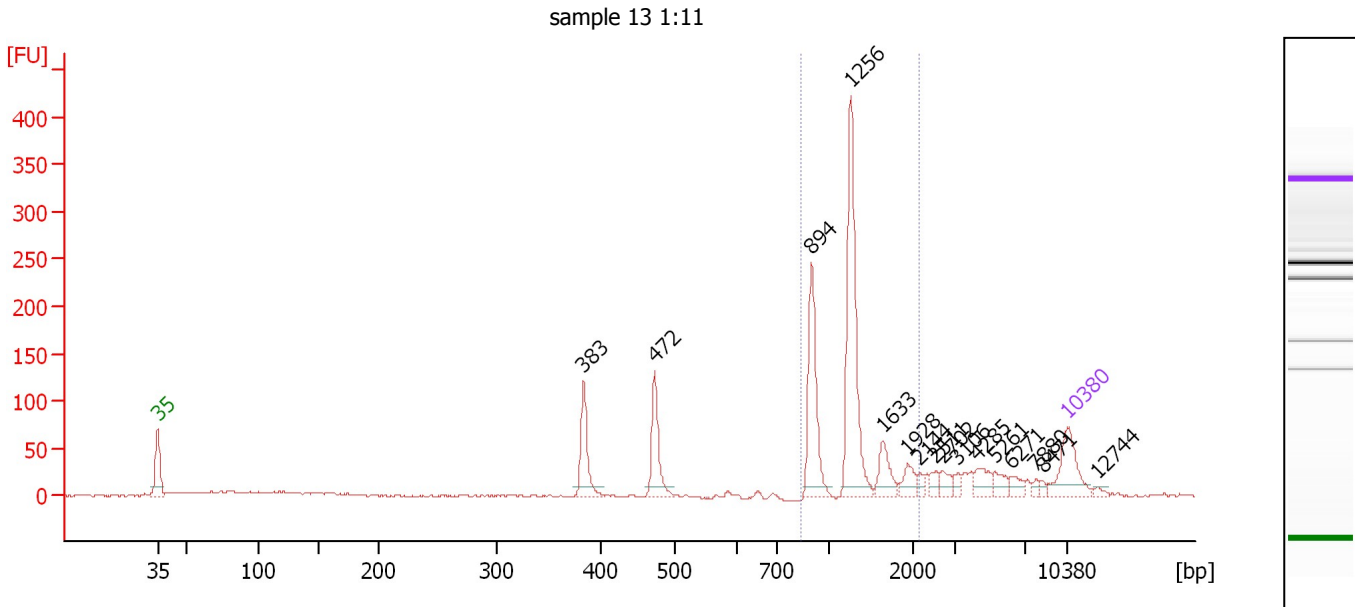
Region table for sample 1 : sample 12 1:14

From [bp]	To [bp]	Average Size [bp]	Molarity [pmol/l]	Conc. [pg/μl]	Corr. Area	% of Total	Size distribution in CV [%]	Color
854	2,392	1,391	1,113.4	954.94	910.9	79	24.9	Blue

Assay Class: High Sensitivity DNA Assay
 Data Path: C:\...ents and Settings\Bioanalyzer\2013-04-01\2013-04-01_004.xad

Created: 4/1/2013 1:24:14 PM
 Modified: 4/1/2013 4:08:01 PM

Electropherogram Summary Continued ...



Setpoint Deviations for sample 2 : sample 13 1:11

Height Threshold [FU] : 10

Overall Results for sample 2 : sample 13 1:11

Number of peaks found: 16 Corr. Area 1: 645.4
 Noise: 1.1

Peak table for sample 2 : sample 13 1:11

Peak	Size [bp]	Conc. [pg/µl]	Molarity [pmol/l]	Observations
1	35	125.00	5,411.3	Lower Marker
2	383	106.29	420.3	
3	472	107.80	346.1	
4	894	182.30	308.8	
5	1,256	302.77	365.2	
6	1,633	50.02	46.4	
7	1,928	27.88	21.9	
8	2,144	10.88	7.7	
9	2,511	14.15	8.5	
10	2,702	19.64	11.0	
11	3,106	10.58	5.2	
12	4,285	30.13	10.7	
13	5,261	22.52	6.5	
14	6,271	17.67	4.3	
15	7,880	7.08	1.4	
16	8,471	6.94	1.2	
17	10,380	75.00	10.9	Upper Marker
18	12,744	0.00	0.0	

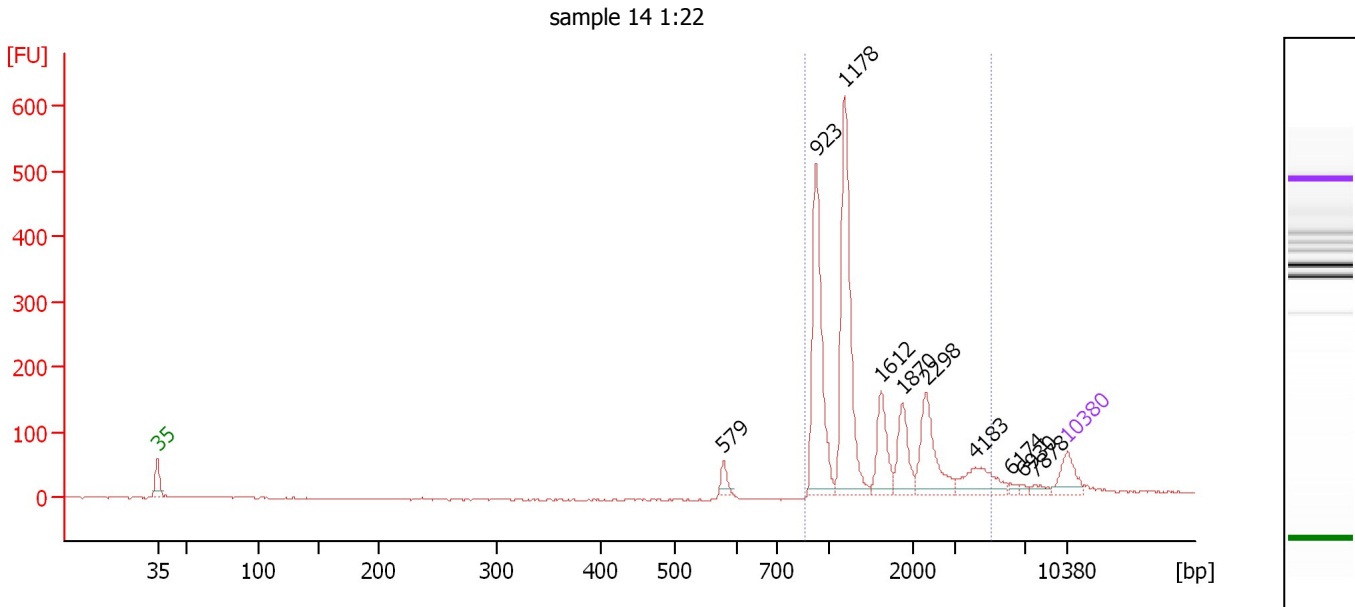
Region table for sample 2 : sample 13 1:11

From [bp]	To [bp]	Average Size [bp]	Molarity [pmol/l]	Conc. [pg/µl]	Corr. Area	% of Total	Size distribution in CV [%]	Color
835	2,128	1,247	719.0	560.83	645.4	53	23.6	Blue

Assay Class: High Sensitivity DNA Assay
 Data Path: C:\...ents and Settings\Bioanalyzer\2013-04-01\2013-04-01_004.xad

Created: 4/1/2013 1:24:14 PM
 Modified: 4/1/2013 4:08:01 PM

Electropherogram Summary Continued ...



Setpoint Deviations for sample 3 : sample 14 1:22

Height Threshold [FU] : 10

Overall Results for sample 3 : sample 14 1:22

Number of peaks found: 10 Corr. Area 1: 1,620.5
 Noise: 0.8

Peak table for sample 3 : sample 14 1:22

Peak	Size [bp]	Conc. [pg/μl]	Molarity [pmol/l]	Observations
1	35	125.00	5,411.3	Lower Marker
2	579	42.23	110.6	
3	923	528.47	867.1	
4	1,178	597.31	768.0	
5	1,612	149.35	140.4	
6	1,870	131.98	106.9	
7	2,298	202.49	133.5	
8	4,183	116.05	42.0	
9	6,174	11.33	2.8	
10	6,930	9.81	2.1	
11	7,878	18.50	3.6	
12	10,380	75.00	10.9	Upper Marker

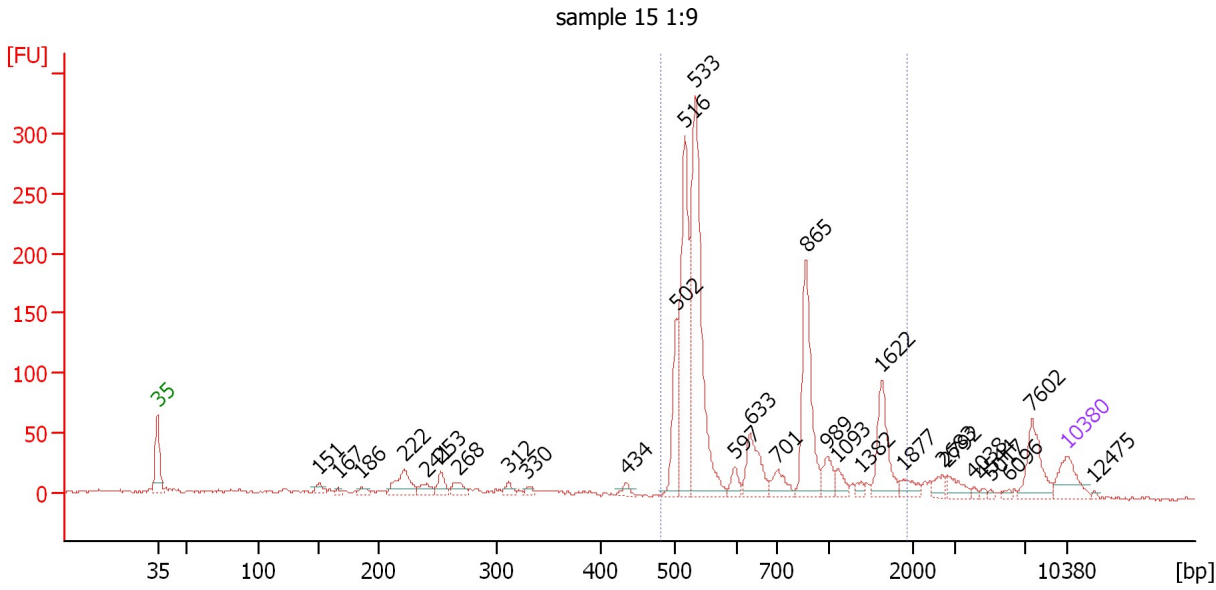
Region table for sample 3 : sample 14 1:22

From [bp]	To [bp]	Average Size [bp]	Molarity [pmol/l]	Conc. [pg/μl]	Corr. Area	% of Total	Size distribution in CV [%]	Color
859	5,074	1,570	1,969.4	1,697.94	1,620.5	91	52.6	Blue

Assay Class: High Sensitivity DNA Assay
 Data Path: C:\...ents and Settings\Bioanalyzer\2013-04-01\2013-04-01_004.xad

Created: 4/1/2013 1:24:14 PM
 Modified: 4/1/2013 4:08:01 PM

Electropherogram Summary Continued ...



Overall Results for sample 4 : sample 15 1:9

Number of peaks found: 30 Corr. Area 1: 1,249.1
 Noise: 1.4

Peak table for sample 4 : sample 15 1:9

Peak	Size [bp]	Conc. [pg/μl]	Molarity [pmol/l]	Observations
1	35	125.00	5,411.3	Lower Marker
2	151	32.36	324.4	
3	167	11.95	108.8	
4	186	18.58	151.2	
5	222	107.82	735.3	
6	241	37.70	237.3	
7	253	47.33	283.4	
8	268	41.32	233.9	
9	312	25.95	126.0	
10	330	16.17	74.3	
11	434	20.04	69.9	
12	502	170.75	514.9	
13	516	517.18	1,519.7	
14	533	725.33	2,063.4	
15	597	37.36	94.9	
16	633	137.05	328.0	
17	701	59.33	128.3	
18	865	312.18	547.0	
19	989	54.11	82.9	
20	1,093	31.75	44.0	
21	1,382	15.55	17.1	
22	1,622	146.52	136.8	
23	1,877	34.12	27.6	
24	2,683	25.71	14.5	
25	2,792	34.95	19.0	
26	4,038	7.48	2.8	

Assay Class: High Sensitivity DNA Assay
 Data Path: C:\...ents and Settings\Bioanalyzer\2013-04-01\2013-04-01_004.xad


Created: 4/1/2013 1:24:14 PM
 Modified: 4/1/2013 4:08:01 PM

Electropherogram Summary Continued ...

... Peak table for sample 4 : sample 15 1:9

Peak	Size [bp]	Conc. [pg/μl]	Molarity [pmol/l]	Observations
27	4,544	6.45	2.1	
28	5,017	4.80	1.5	
29	6,096	8.43	2.1	
30	7,602	115.32	23.0	
31	10,380	75.00	10.9	Upper Marker
32	12,475	0.00	0.0	

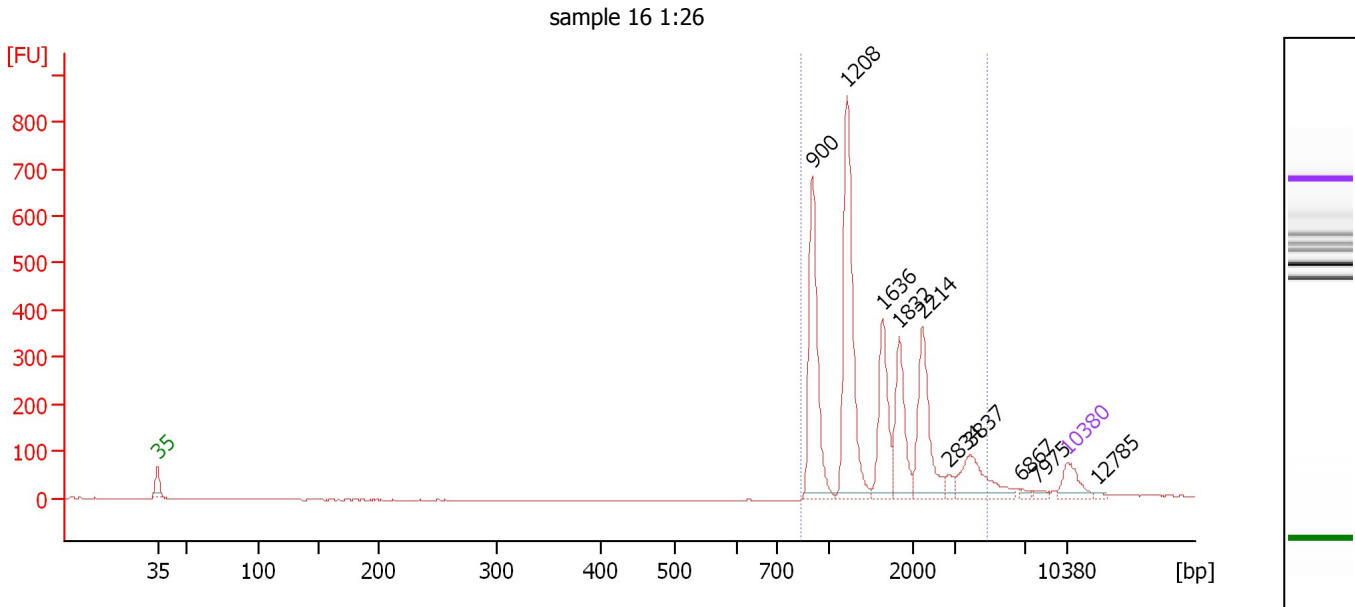
Region table for sample 4 : sample 15 1:9

From [bp]	To [bp]	Average Size [bp]	Molarity [pmol/l]	Conc. [pg/μl]	Corr. Area	% of Total	Size distribution in CV [%]	Color
480	1,920	746	5,478.0	2,249.55	1,249.1	72	47.7	

Assay Class: High Sensitivity DNA Assay
 Data Path: C:\...ents and Settings\Bioanalyzer\2013-04-01\2013-04-01_004.xad

Created: 4/1/2013 1:24:14 PM
 Modified: 4/1/2013 4:08:01 PM

Electropherogram Summary Continued ...



Setpoint Deviations for sample 5 : sample 16 1:26

Height Threshold [FU] : 10

Overall Results for sample 5 : sample 16 1:26

Number of peaks found: 10 Corr. Area 1: 2,508.0
 Noise: 0.6

Peak table for sample 5 : sample 16 1:26

Peak	Size [bp]	Conc. [pg/μl]	Molarity [pmol/l]	Observations
1	35	125.00	5,411.3	Lower Marker
2	900	524.35	883.0	
3	1,208	643.96	807.8	
4	1,636	260.13	240.9	
5	1,832	230.76	190.9	
6	2,214	285.21	195.2	
7	2,834	26.89	14.4	
8	3,837	170.12	67.2	
9	6,867	11.65	2.6	
10	7,975	14.07	2.7	
11	10,380	75.00	10.9	Upper Marker
12	12,785	0.00	0.0	

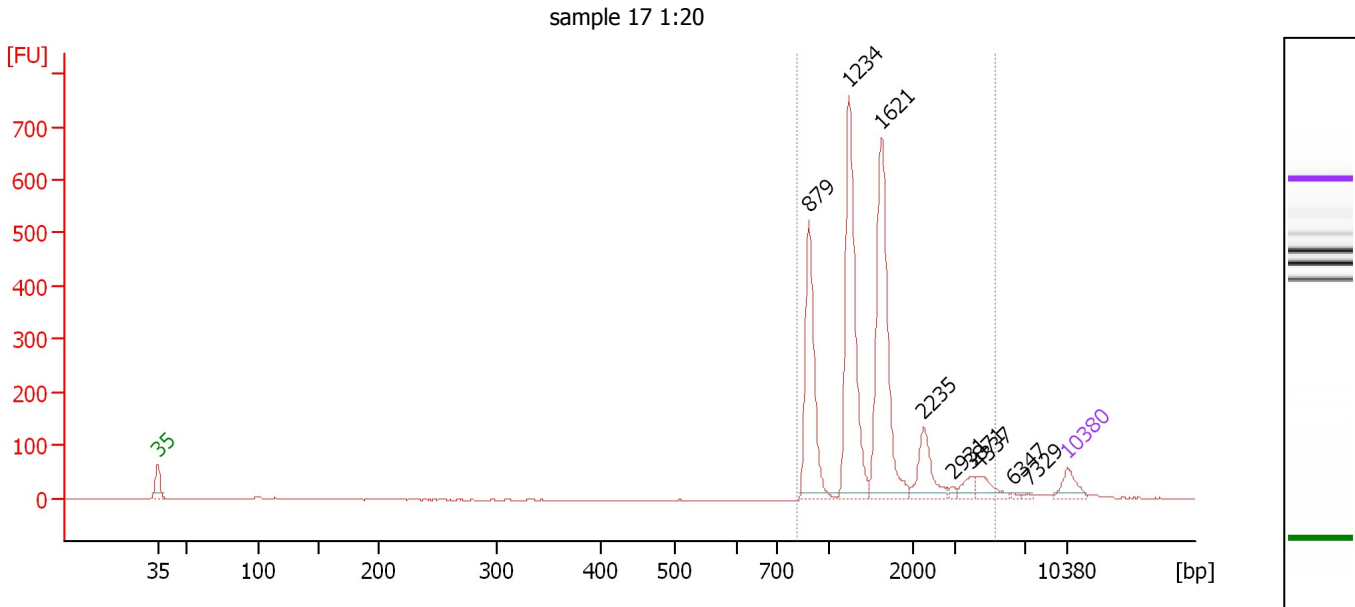
Region table for sample 5 : sample 16 1:26

From [bp]	To [bp]	Average Size [bp]	Molarity [pmol/l]	Conc. [pg/μl]	Corr. Area	% of Total	Size distribution in CV [%]	Color
830	4,866	1,652	2,278.9	2,078.86	2,508.0	95	47.6	Blue

Assay Class: High Sensitivity DNA Assay
 Data Path: C:\...ents and Settings\Bioanalyzer\2013-04-01\2013-04-01_004.xad

Created: 4/1/2013 1:24:14 PM
 Modified: 4/1/2013 4:08:01 PM

Electropherogram Summary Continued ...



Setpoint Deviations for sample 6 : sample 17 1:20

Height Threshold [FU] : 10

Overall Results for sample 6 : sample 17 1:20

Number of peaks found: 9 Corr. Area 1: 2,190.6
 Noise: 1.0

Peak table for sample 6 : sample 17 1:20

Peak	Size [bp]	Conc. [pg/μl]	Molarity [pmol/l]	Observations
1	35	125.00	5,411.3	Lower Marker
2	879	618.88	1,066.7	
3	1,234	870.54	1,068.9	
4	1,621	853.39	797.6	
5	2,235	183.80	124.6	
6	2,931	14.51	7.5	
7	3,871	49.25	19.3	
8	4,337	80.27	28.0	
9	6,347	8.30	2.0	
10	7,329	8.35	1.7	
11	10,380	75.00	10.9	Upper Marker

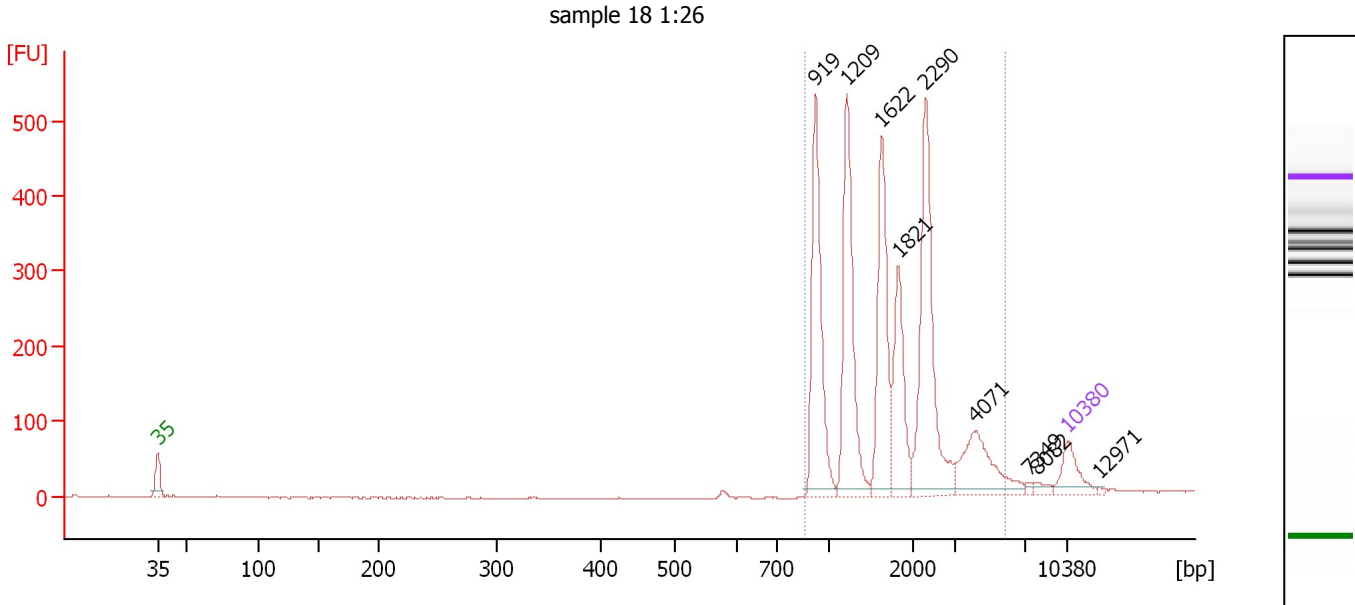
Region table for sample 6 : sample 17 1:20

From [bp]	To [bp]	Average Size [bp]	Molarity [pmol/l]	Conc. [pg/μl]	Corr. Area	% of Total	Size distribution in CV [%]	Color
813	5,340	1,559	3,017.8	2,661.54	2,190.6	95	48.0	Blue

Assay Class: High Sensitivity DNA Assay
 Data Path: C:\...ents and Settings\Bioanalyzer\2013-04-01\2013-04-01_004.xad

Created: 4/1/2013 1:24:14 PM
 Modified: 4/1/2013 4:08:01 PM

Electropherogram Summary Continued ...



Setpoint Deviations for sample 7 : sample 18 1:26

Height Threshold [FU] : 10

Overall Results for sample 7 : sample 18 1:26

Number of peaks found: 9 Corr. Area 1: 2,435.6
 Noise: 0.7

Peak table for sample 7 : sample 18 1:26

Peak	Size [bp]	Conc. [pg/µl]	Molarity [pmol/l]	Observations
1	35	125.00	5,411.3	Lower Marker
2	919	449.13	740.8	
3	1,209	428.35	536.7	
4	1,622	348.68	325.7	
5	1,821	226.93	188.8	
6	2,290	465.19	307.8	
7	4,071	190.21	70.8	
8	7,349	7.69	1.6	
9	8,082	15.52	2.9	
10	10,380	75.00	10.9	Upper Marker
11	12,971	0.00	0.0	

Region table for sample 7 : sample 18 1:26

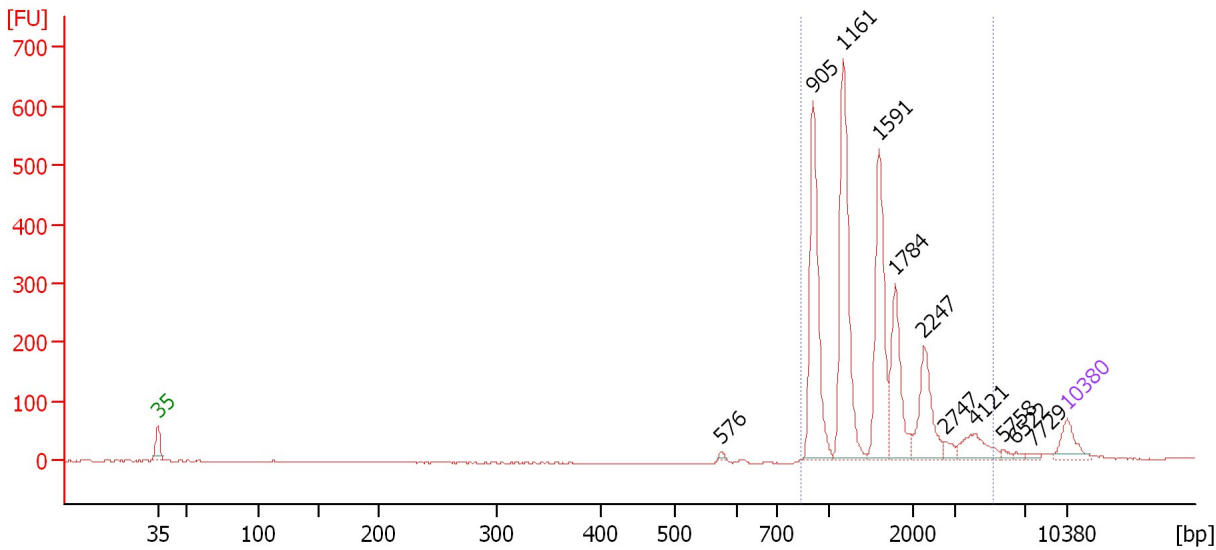
From [bp]	To [bp]	Average Size [bp]	Molarity [pmol/l]	Conc. [pg/µl]	Corr. Area	% of Total	Size distribution in CV [%]	Color
861	5,878	1,860	2,062.6	2,059.71	2,435.6	95	50.5	Blue

Assay Class: High Sensitivity DNA Assay
 Data Path: C:\...ents and Settings\Bioanalyzer\2013-04-01\2013-04-01_004.xad

Created: 4/1/2013 1:24:14 PM
 Modified: 4/1/2013 4:08:01 PM

Electropherogram Summary Continued ...

sample 19 1:26



Overall Results for sample 8 : sample 19 1:26

Number of peaks found: 11 Corr. Area 1: 2,120.8
 Noise: 1.0

Peak table for sample 8 : sample 19 1:26

Peak	Size [bp]	Conc. [pg/μl]	Molarity [pmol/l]	Observations
1	35	125.00	5,411.3	Lower Marker
2	576	9.90	26.1	
3	905	560.16	937.4	
4	1,161	598.61	780.9	
5	1,591	432.04	411.4	
6	1,784	252.23	214.3	
7	2,247	205.80	138.8	
8	2,747	25.76	14.2	
9	4,121	94.73	34.8	
10	5,758	10.92	2.9	
11	6,522	8.67	2.0	
12	7,729	11.48	2.3	
13	10,380	75.00	10.9	Upper Marker

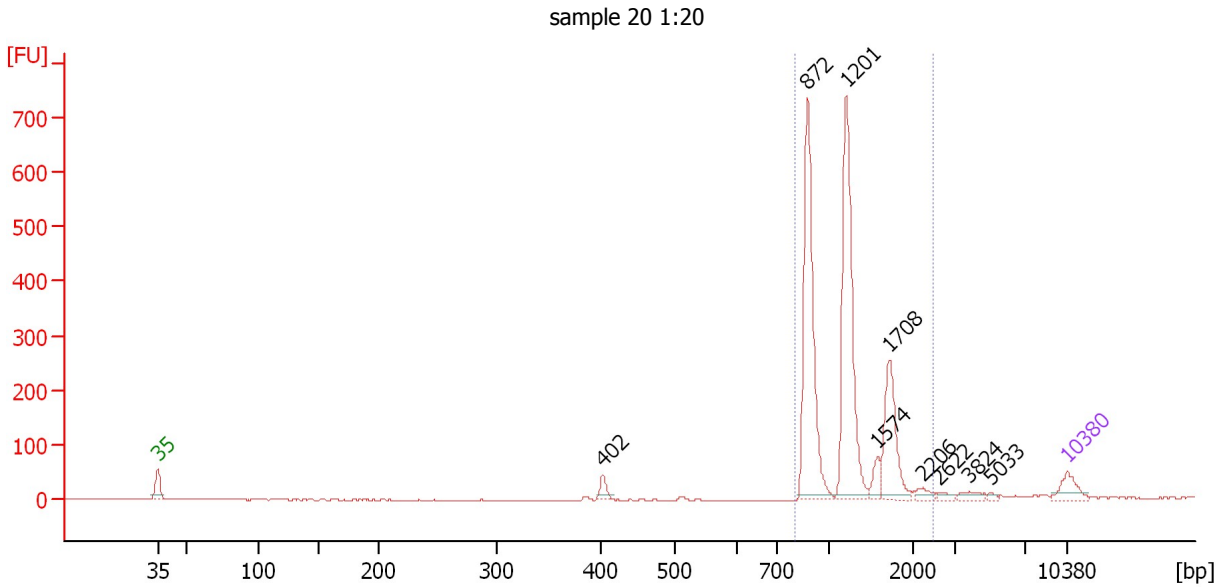
Region table for sample 8 : sample 19 1:26

From [bp]	To [bp]	Average Size [bp]	Molarity [pmol/l]	Conc. [pg/μl]	Corr. Area	% of Total	Size distribution in CV [%]	Color
829	5,138	1,563	2,432.2	2,154.82	2,120.8	95	46.3	Blue

Assay Class: High Sensitivity DNA Assay
 Data Path: C:\...ents and Settings\Bioanalyzer\2013-04-01\2013-04-01_004.xad

Created: 4/1/2013 1:24:14 PM
 Modified: 4/1/2013 4:08:01 PM

Electropherogram Summary Continued ...



Setpoint Deviations for sample 9 : sample 20 1:20

Height Threshold [FU] : 10

Overall Results for sample 9 : sample 20 1:20

Number of peaks found: 9 Corr. Area 1: 1,698.4
 Noise: 0.7

Peak table for sample 9 : sample 20 1:20

Peak	Size [bp]	Conc. [pg/μl]	Molarity [pmol/l]	Observations
1	35	125.00	5,411.3	Lower Marker
2	402	53.84	202.8	
3	872	923.70	1,604.1	
4	1,201	871.08	1,099.0	
5	1,574	62.74	60.4	
6	1,708	327.02	290.0	
7	2,206	31.46	21.6	
8	2,622	17.13	9.9	
9	3,824	32.29	12.8	
10	5,033	10.15	3.1	
11	10,380	75.00	10.9	Upper Marker

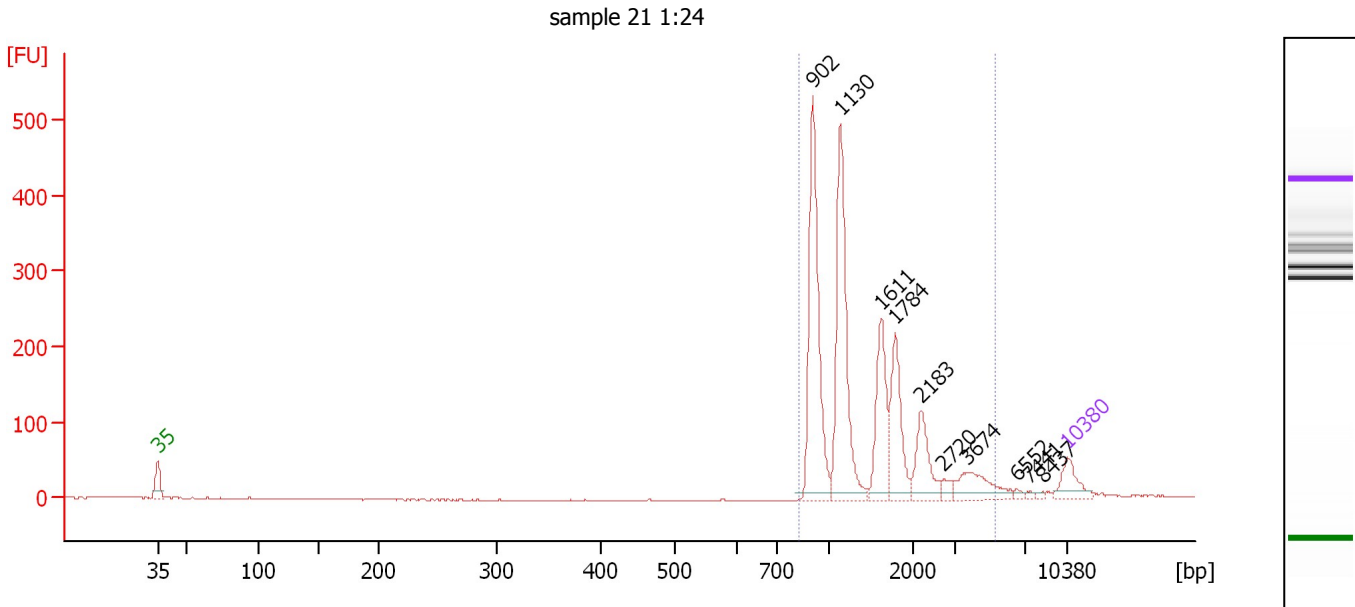
Region table for sample 9 : sample 20 1:20

From [bp]	To [bp]	Average Size [bp]	Molarity [pmol/l]	Conc. [pg/μl]	Corr. Area	% of Total	Size distribution in CV [%]	Color
801	2,468	1,208	2,970.0	2,209.05	1,698.4	89	27.6	Blue

Assay Class: High Sensitivity DNA Assay
 Data Path: C:\...ents and Settings\Bioanalyzer\2013-04-01\2013-04-01_004.xad

Created: 4/1/2013 1:24:14 PM
 Modified: 4/1/2013 4:08:01 PM

Electropherogram Summary Continued ...



Setpoint Deviations for sample 10 : sample 21 1:24

Height Threshold [FU] : 10

Overall Results for sample 10 : sample 21 1:24

Number of peaks found: 10 Corr. Area 1: 1,600.5
 Noise: 0.7

Peak table for sample 10 : sample 21 1:24

Peak	Size [bp]	Conc. [pg/μl]	Molarity [pmol/l]	Observations
1	35	125.00	5,411.3	Lower Marker
2	902	612.18	1,028.0	
3	1,130	551.87	740.0	
4	1,611	244.77	230.2	
5	1,784	218.92	185.9	
6	2,183	144.93	100.6	
7	2,720	25.94	14.5	
8	3,674	119.21	49.2	
9	6,552	9.94	2.3	
10	7,441	6.98	1.4	
11	8,437	8.40	1.5	
12	10,380	75.00	10.9	Upper Marker

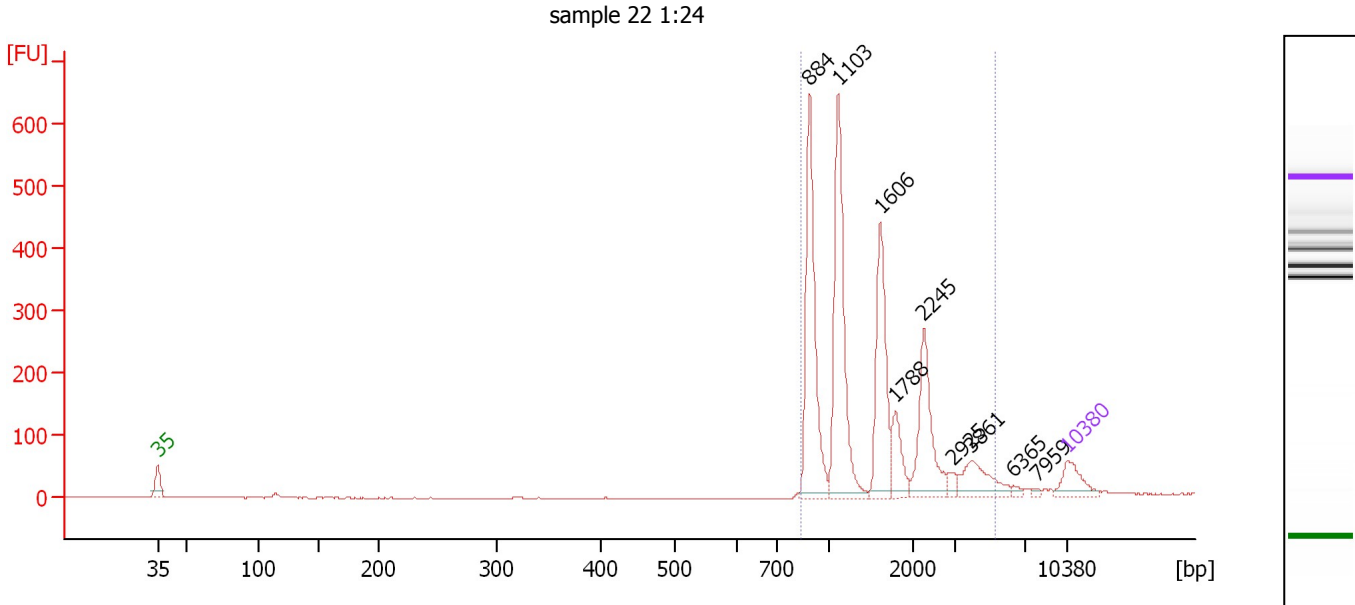
Region table for sample 10 : sample 21 1:24

From [bp]	To [bp]	Average Size [bp]	Molarity [pmol/l]	Conc. [pg/μl]	Corr. Area	% of Total	Size distribution in CV [%]	Color
827	5,265	1,510	2,181.7	1,835.98	1,600.5	95	51.3	Blue

Assay Class: High Sensitivity DNA Assay
 Data Path: C:\...ents and Settings\Bioanalyzer\2013-04-01\2013-04-01_004.xad

Created: 4/1/2013 1:24:14 PM
 Modified: 4/1/2013 4:08:01 PM

Electropherogram Summary Continued ...



Setpoint Deviations for sample 11 : sample 22 1:24

Height Threshold [FU] : 10

Overall Results for sample 11 : sample 22 1:24

Number of peaks found: 9 Corr. Area 1: 2,074.1
 Noise: 0.8

Peak table for sample 11 : sample 22 1:24

Peak	Size [bp]	Conc. [pg/μl]	Molarity [pmol/l]	Observations
1	35	125.00	5,411.3	Lower Marker
2	884	559.53	959.4	
3	1,103	549.21	754.1	
4	1,606	333.23	314.4	
5	1,788	103.25	87.5	
6	2,245	251.52	169.8	
7	2,925	24.43	12.7	
8	3,861	122.16	47.9	
9	6,365	11.81	2.8	
10	7,959	8.39	1.6	
11	10,380	75.00	10.9	Upper Marker

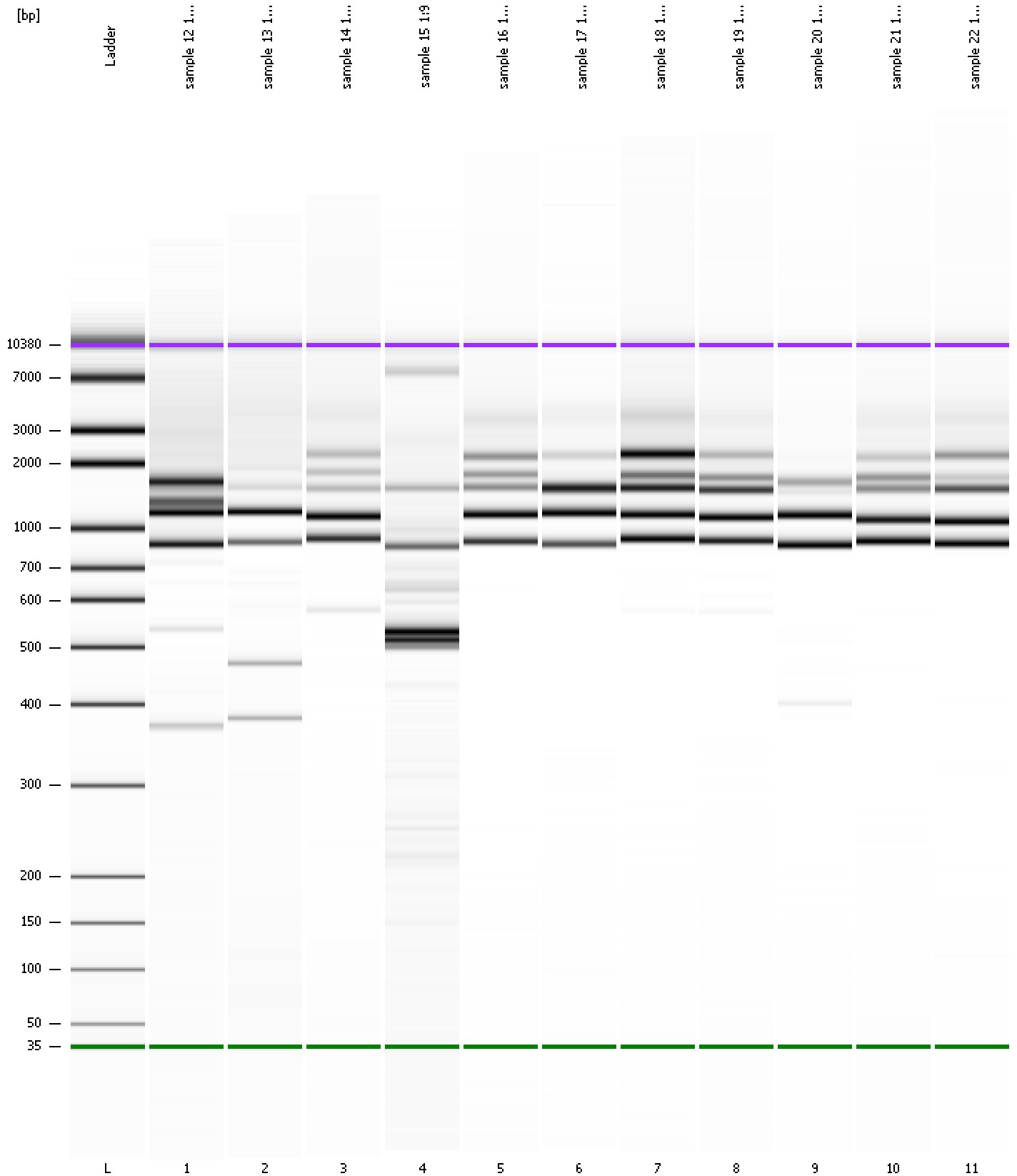
Region table for sample 11 : sample 22 1:24

From [bp]	To [bp]	Average Size [bp]	Molarity [pmol/l]	Conc. [pg/μl]	Corr. Area	% of Total	Size distribution in CV [%]	Color
829	5,262	1,575	2,189.4	1,871.68	2,074.1	95	52.7	Blue

Assay Class: High Sensitivity DNA Assay
Data Path: C:\...ents and Settings\Bioanalyzer\2013-04-01\2013-04-01_004.xad

Created: 4/1/2013 1:24:14 PM
Modified: 4/1/2013 4:08:01 PM

Gel Image

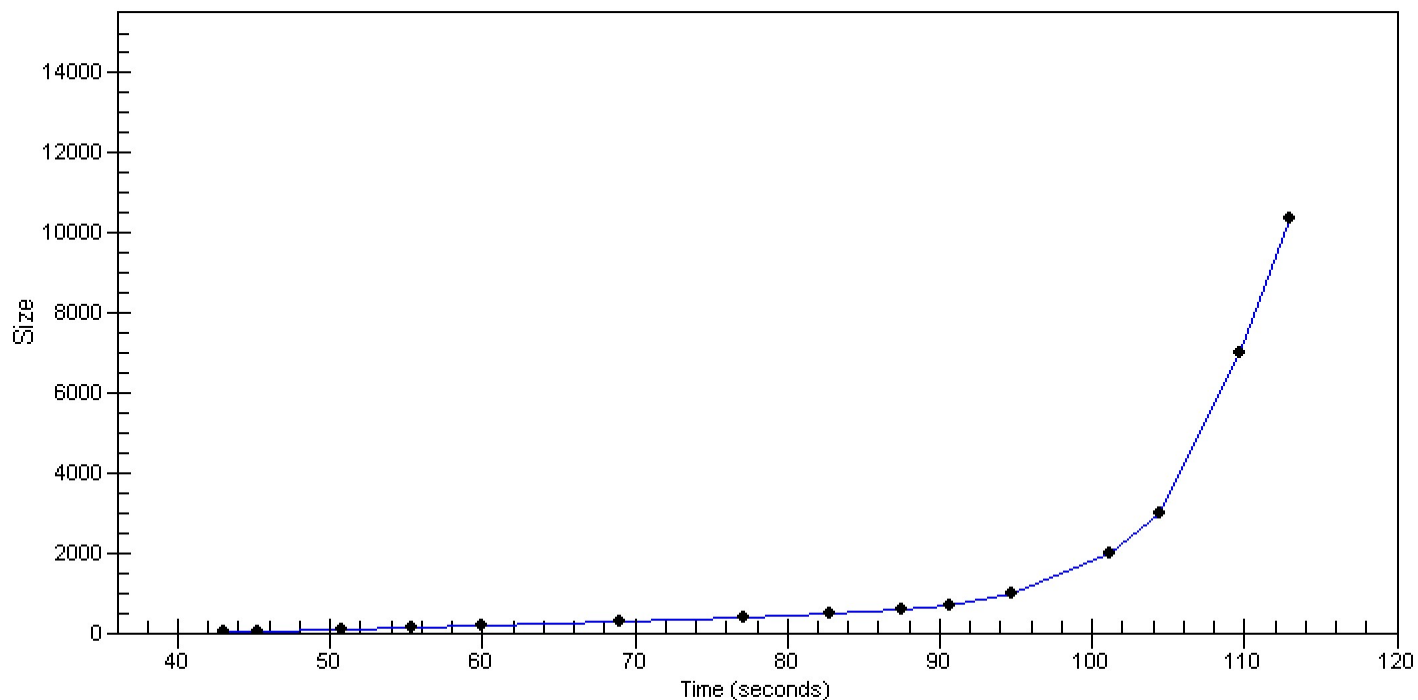


Assay Class: High Sensitivity DNA Assay
Data Path: C:\...ents and Settings\Bioanalyzer\2013-04-01\2013-04-01_004.xad

Created: 4/1/2013 1:24:14 PM
Modified: 4/1/2013 4:08:01 PM

Curves

Standard Curve



Assay Class: High Sensitivity DNA Assay
 Data Path: C:\...ents and Settings\Bioanalyzer\2013-04-01\2013-04-01_004.xad

Created: 4/1/2013 1:24:14 PM
 Modified: 4/1/2013 4:08:01 PM

Run Logbook

Description	Number	Source	Category	Sub Category	Time	Time Zone	User	Host
Run ended on port 1 (Number of wells acquired: 12)		Instrument	Run		4/1/2013 2:05:33 PM	(GMT --07:00) Pacific Standard Time	UC Davis	D8XSMGH1
Run started on port 1 (File: C:\Documents and Settings\Bioanalyzer\2013-04-01\2013-04-01_004.xad)		Instrument	Run		4/1/2013 1:24:20 PM	(GMT --07:00) Pacific Standard Time	UC Davis	D8XSMGH1
Product Number : G2938B		Instrument	Run		4/1/2013 1:24:20 PM	(GMT --07:00) Pacific Standard Time	UC Davis	D8XSMGH1
Name :		Instrument	Run		4/1/2013 1:24:20 PM	(GMT --07:00) Pacific Standard Time	UC Davis	D8XSMGH1
Vendor : Agilent Technologies		Instrument	Run		4/1/2013 1:24:20 PM	(GMT --07:00) Pacific Standard Time	UC Davis	D8XSMGH1
Serial# : DE13701086		Instrument	Run		4/1/2013 1:24:20 PM	(GMT --07:00) Pacific Standard Time	UC Davis	D8XSMGH1
Firmware : C.01.069		Instrument	Run		4/1/2013 1:24:20 PM	(GMT --07:00) Pacific Standard Time	UC Davis	D8XSMGH1
Cartridge : Electrode		Instrument	Run		4/1/2013 1:24:20 PM	(GMT --07:00) Pacific Standard Time	UC Davis	D8XSMGH1