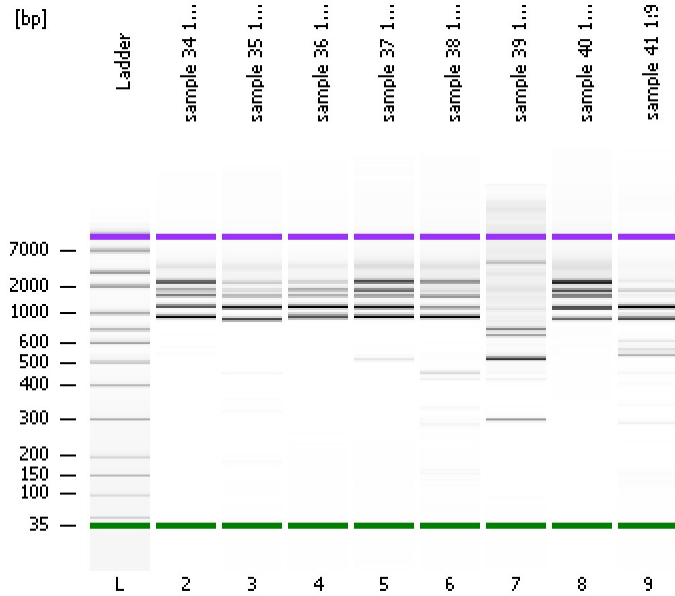


Assay Class: High Sensitivity DNA Assay
Data Path: C:\...ettings\Bioanalyzer\2013-04-02\2013-04-02_001_WB_BioA-4.xad

Created: 4/2/2013 9:51:34 AM
Modified: 4/2/2013 10:48:59 AM

Electrophoresis File Run Summary



Instrument Information:

Instrument Name: DE13701086 Firmware: C.01.069
Serial#: DE13701086 Type: G2938B

Assay Information:

Assay Origin Path: C:\Program Files\Agilent\2100 bioanalyzer\2100 expert\assays\dsDNA\High Sensitivity DNA.xsy
Assay Class: High Sensitivity DNA Assay
Version: 1.03
Assay Comments: Copyright © 2003-2010 Agilent Technologies

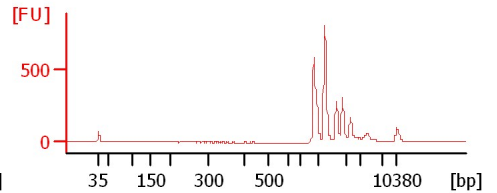
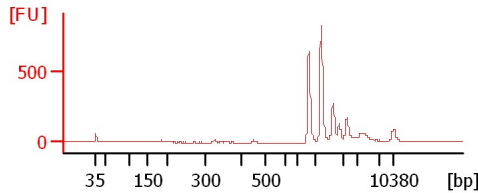
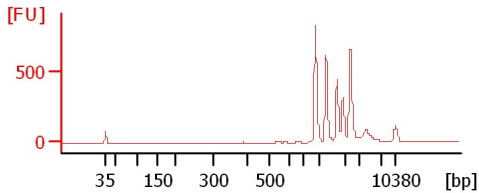
Chip Information:

Chip Lot #:
Reagent Kit Lot #:
Chip Comments:

sample 34 1:20

sample 35 1:16

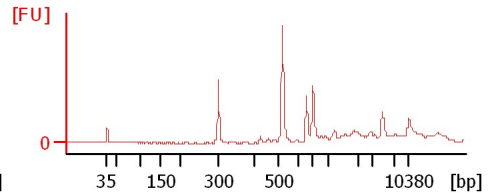
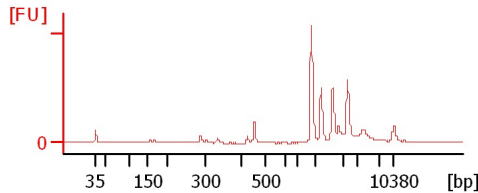
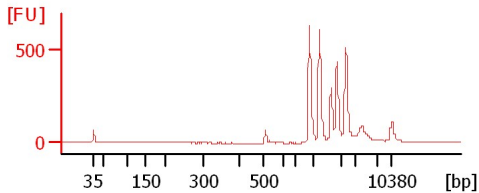
sample 36 1:25



sample 37 1:23

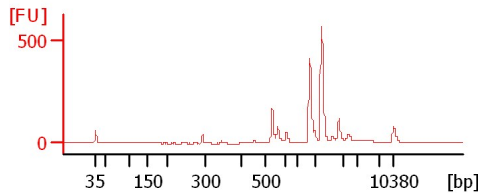
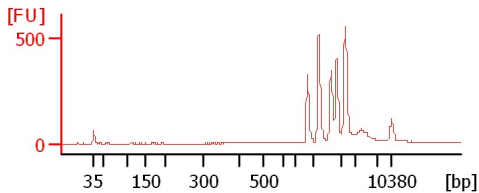
sample 38 1:10

sample 39 1:10



sample 40 1:32

sample 41 1:9



Assay Class: High Sensitivity DNA Assay
 Data Path: C:\...ettings\Bioanalyzer\2013-04-02\2013-04-02_001_WB_BioA-4.xad

Created: 4/2/2013 9:51:34 AM
 Modified: 4/2/2013 10:48:59 AM

Electrophoresis File Run Summary (Chip Summary)

Sample Name	Sample Comment	Rest. Digest	Status	Observation	Result Label	Result Color
sample 34 1:20		<input type="checkbox"/>				
sample 35 1:16		<input type="checkbox"/>				
sample 36 1:25		<input type="checkbox"/>				
sample 37 1:23		<input type="checkbox"/>				
sample 38 1:10		<input type="checkbox"/>				
sample 39 1:10		<input type="checkbox"/>				
sample 40 1:32		<input type="checkbox"/>				
sample 41 1:9		<input type="checkbox"/>				
Ladder		<input type="checkbox"/>				

Chip Lot #

Reagent Kit Lot #

Chip Comments :

Assay Class: High Sensitivity DNA Assay
Data Path: C:\...ettings\Bioanalyzer\2013-04-02\2013-04-02_001_WB_BioA-4.xad

Created: 4/2/2013 9:51:34 AM
Modified: 4/2/2013 10:48:59 AM

Electrophoresis Assay Details

General Analysis Settings

Number of Available Sample and Ladder Wells (Max.) : 12
Minimum Visible Range [s] : 32
Maximum Visible Range [s] : 138
Start Analysis Time Range [s] : 33
End Analysis Time Range [s] : 137.5
Ladder Concentration [pg/μl] : 1950
Uses Standard Area for Ladder Fragments
Lower Marker Concentration [pg/μl] : 125
Upper Marker Concentration [pg/μl] : 75
Used Upper Marker for Quantitation
Standard Curve Fit is Point to Point
Show Data Aligned to Lower and Upper Marker

Integrator Settings

Integration Start Time [s] : 33.05
Integration End Time [s] : 137
Slope Threshold : 0.8
Height Threshold [FU] : 5
Area Threshold : 0.1
Width Threshold [s] : 0.6
Baseline Plateau [s] : 0.5

Filter Settings

Filter Width [s] : 0.5
Polynomial Order : 4

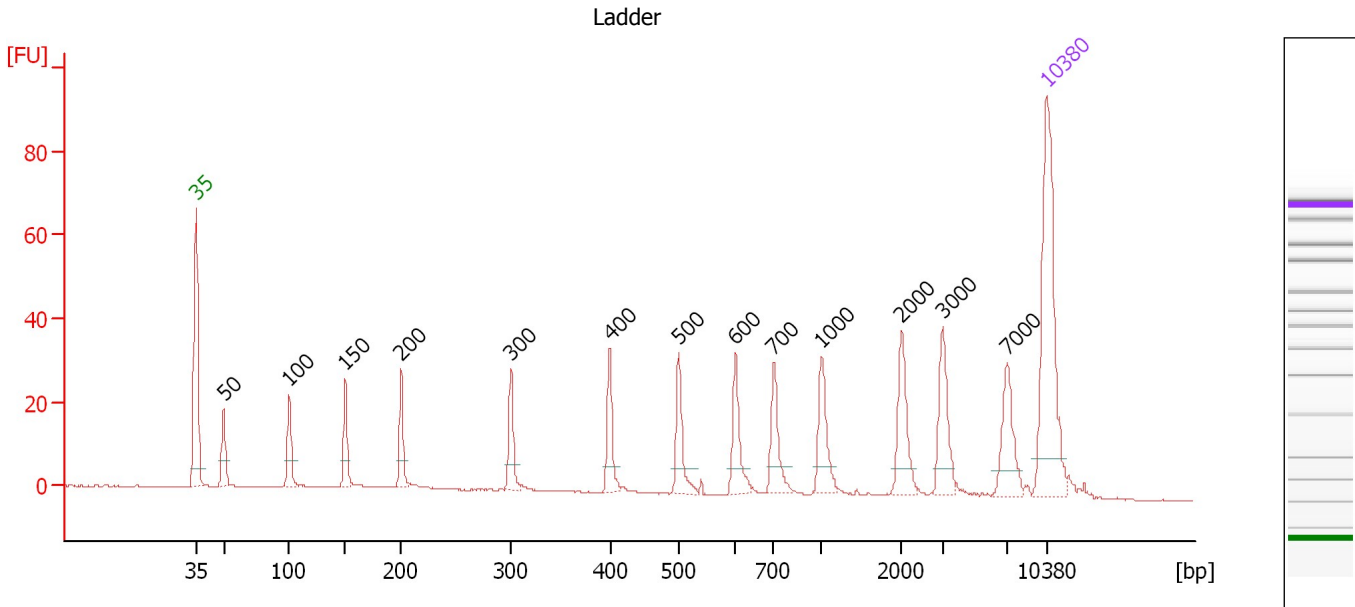
Ladder

Ladder Peak	Size	Area
1	35	160
2	50	210
3	100	208
4	150	221
5	200	242
6	300	270
7	400	305
8	500	306
9	600	336
10	700	321
11	1000	366
12	2000	413
13	3000	411
14	7000	400
15	10380	214

Assay Class: High Sensitivity DNA Assay
 Data Path: C:\...ettings\Bioanalyzer\2013-04-02\2013-04-02_001_WB_BioA-4.xad

Created: 4/2/2013 9:51:34 AM
 Modified: 4/2/2013 10:48:59 AM

Electropherogram Summary



Overall Results for Ladder

Noise: 0.1

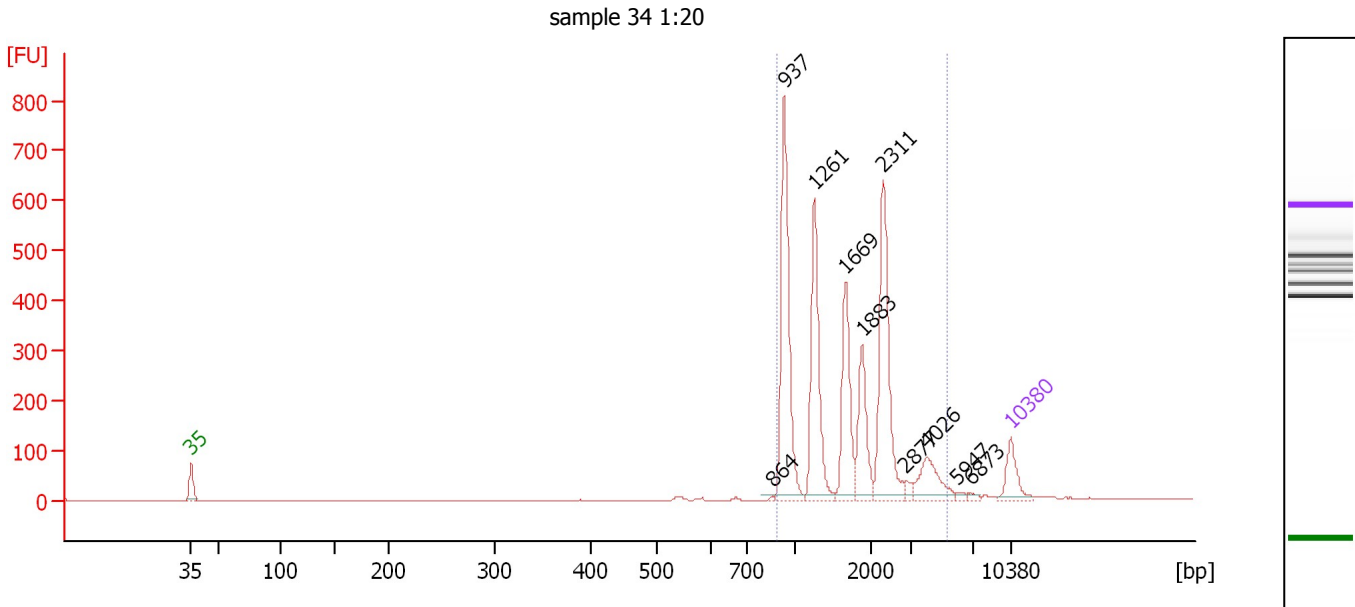
Peak table for Ladder

Peak	Size [bp]	Conc. [pg/μl]	Molarity [pmol/l]	Observations
1	35	125.00	5,411.3	Lower Marker
2	50	150.00	4,545.5	Ladder Peak
3	100	150.00	2,272.7	Ladder Peak
4	150	150.00	1,515.2	Ladder Peak
5	200	150.00	1,136.4	Ladder Peak
6	300	150.00	757.6	Ladder Peak
7	400	150.00	568.2	Ladder Peak
8	500	150.00	454.5	Ladder Peak
9	600	150.00	378.8	Ladder Peak
10	700	150.00	324.7	Ladder Peak
11	1,000	150.00	227.3	Ladder Peak
12	2,000	150.00	113.6	Ladder Peak
13	3,000	150.00	75.8	Ladder Peak
14	7,000	150.00	32.5	Ladder Peak
15	10,380	75.00	10.9	Upper Marker

Assay Class: High Sensitivity DNA Assay
 Data Path: C:\...ettings\Bioanalyzer\2013-04-02\2013-04-02_001_WB_BioA-4.xad

Created: 4/2/2013 9:51:34 AM
 Modified: 4/2/2013 10:48:59 AM

Electropherogram Summary Continued ...



Setpoint Deviations for sample 2 : sample 34 1:20

Height Threshold [FU] : 10

Overall Results for sample 2 : sample 34 1:20

Number of peaks found: 10 Corr. Area 1: 2,588.6
 Noise: 0.3

Peak table for sample 2 : sample 34 1:20

Peak	Size [bp]	Conc. [pg/μl]	Molarity [pmol/l]	Observations
1	35	125.00	5,411.3	Lower Marker
2	864	4.14	7.3	
3	937	540.60	874.6	
4	1,261	376.57	452.6	
5	1,669	250.40	227.4	
6	1,883	177.90	143.1	
7	2,311	407.57	267.2	
8	2,877	16.38	8.6	
9	4,026	114.13	42.9	
10	5,947	8.95	2.3	
11	6,873	8.16	1.8	
12	10,380	75.00	10.9	Upper Marker

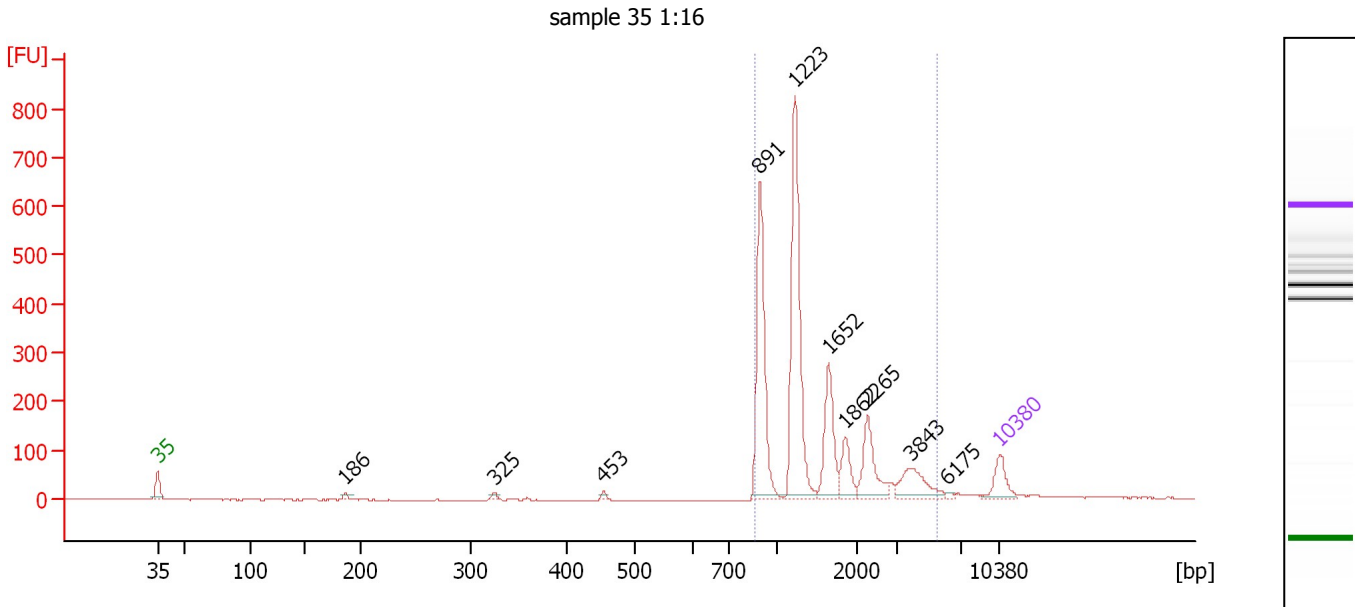
Region table for sample 2 : sample 34 1:20

From [bp]	To [bp]	Average Size [bp]	Molarity [pmol/l]	Conc. [pg/μl]	Corr. Area	% of Total	Size distribution in CV [%]	Color
884	5,377	1,776	1,928.9	1,851.48	2,588.6	97	47.6	Blue

Assay Class: High Sensitivity DNA Assay
 Data Path: C:\...ettings\Bioanalyzer\2013-04-02\2013-04-02_001_WB_BioA-4.xad

Created: 4/2/2013 9:51:34 AM
 Modified: 4/2/2013 10:48:59 AM

Electropherogram Summary Continued ...



Setpoint Deviations for sample 3 : sample 35 1:16

Height Threshold [FU] : 10

Overall Results for sample 3 : sample 35 1:16

Number of peaks found: 10 Corr. Area 1: 1,974.2
 Noise: 0.5

Peak table for sample 3 : sample 35 1:16

Peak	Size [bp]	Conc. [pg/μl]	Molarity [pmol/l]	Observations
1	35	125.00	5,411.3	Lower Marker
2	186	16.33	133.3	
3	325	12.77	59.5	
4	453	10.52	35.2	
5	891	543.99	925.5	
6	1,223	663.27	821.4	
7	1,652	218.29	200.3	
8	1,862	99.53	81.0	
9	2,265	161.75	108.2	
10	3,843	127.09	50.1	
11	6,175	7.54	1.8	
12	10,380	75.00	10.9	Upper Marker

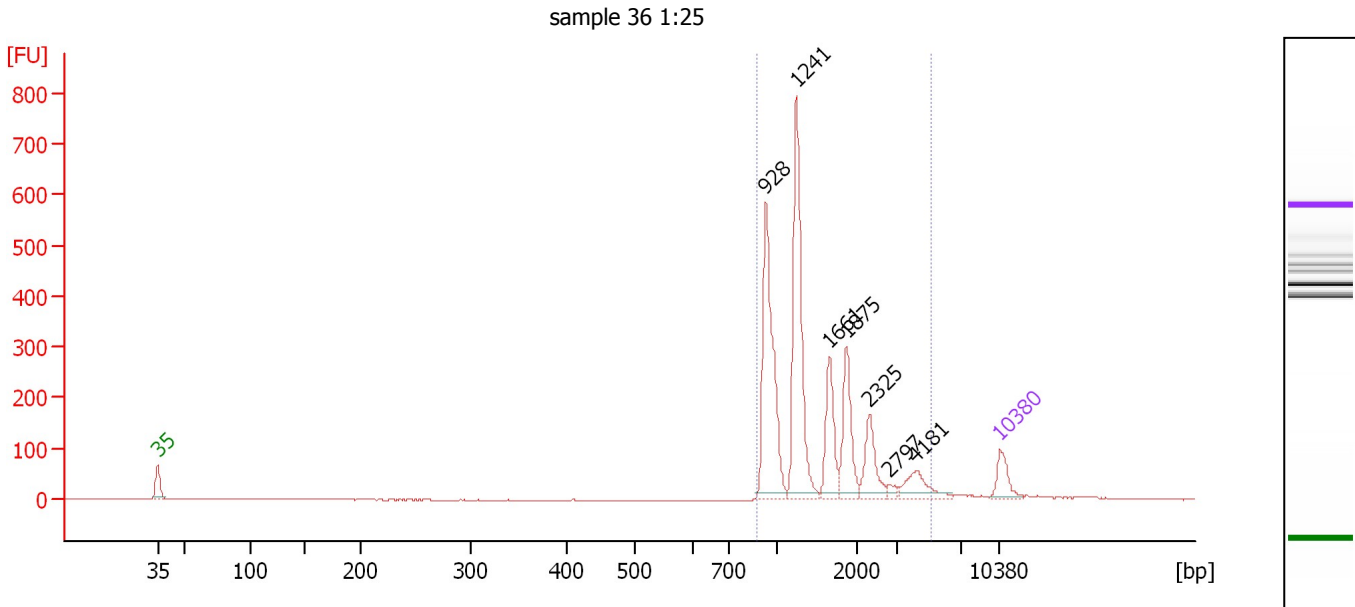
Region table for sample 3 : sample 35 1:16

From [bp]	To [bp]	Average Size [bp]	Molarity [pmol/l]	Conc. [pg/μl]	Corr. Area	% of Total	Size distribution in CV [%]	Color
856	5,446	1,589	2,106.6	1,807.15	1,974.2	94	54.4	Blue

Assay Class: High Sensitivity DNA Assay
 Data Path: C:\...ettings\Bioanalyzer\2013-04-02\2013-04-02_001_WB_BioA-4.xad

Created: 4/2/2013 9:51:34 AM
 Modified: 4/2/2013 10:48:59 AM

Electropherogram Summary Continued ...



Setpoint Deviations for sample 4 : sample 36 1:25

Height Threshold [FU] : 10

Overall Results for sample 4 : sample 36 1:25

Number of peaks found: 7 Corr. Area 1: 2,089.8
 Noise: 0.7

Peak table for sample 4 : sample 36 1:25

Peak	Size [bp]	Conc. [pg/μl]	Molarity [pmol/l]	Observations
1	35	125.00	5,411.3	Lower Marker
2	928	608.69	994.0	
3	1,241	621.86	759.5	
4	1,661	194.35	177.3	
5	1,875	213.04	172.2	
6	2,325	142.20	92.7	
7	2,797	19.55	10.6	
8	4,181	99.68	36.1	
9	10,380	75.00	10.9	Upper Marker

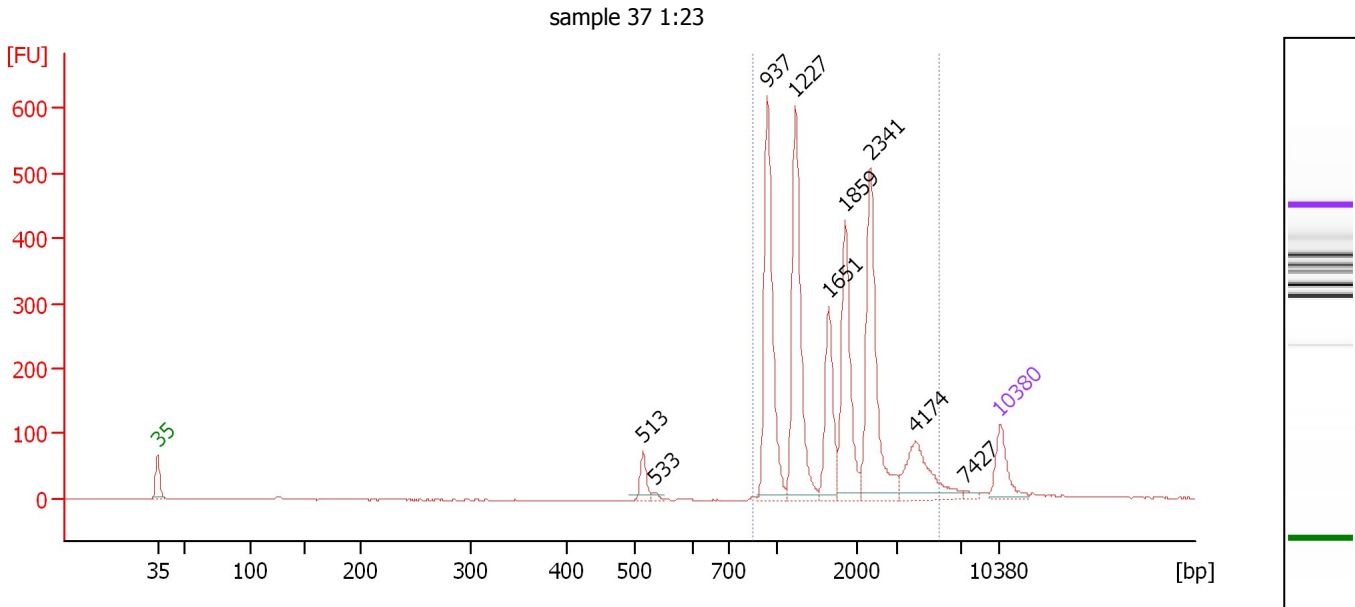
Region table for sample 4 : sample 36 1:25

From [bp]	To [bp]	Average Size [bp]	Molarity [pmol/l]	Conc. [pg/μl]	Corr. Area	% of Total	Size distribution in CV [%]	Color
876	5,064	1,557	2,133.9	1,877.17	2,089.8	96	48.5	Blue

Assay Class: High Sensitivity DNA Assay
 Data Path: C:\...ettings\Bioanalyzer\2013-04-02\2013-04-02_001_WB_BioA-4.xad

Created: 4/2/2013 9:51:34 AM
 Modified: 4/2/2013 10:48:59 AM

Electropherogram Summary Continued ...



Setpoint Deviations for sample 5 : sample 37 1:23

Height Threshold [FU] : 10

Overall Results for sample 5 : sample 37 1:23

Number of peaks found: 9 Corr. Area 1: 2,374.8
 Noise: 0.7

Peak table for sample 5 : sample 37 1:23

Peak	Size [bp]	Conc. [pg/μl]	Molarity [pmol/l]	Observations
1	35	125.00	5,411.3	Lower Marker
2	513	47.76	141.0	
3	533	9.42	26.7	
4	937	404.89	654.4	
5	1,227	376.00	464.4	
6	1,651	157.11	144.2	
7	1,859	242.54	197.7	
8	2,341	324.48	210.0	
9	4,174	139.38	50.6	
10	7,427	8.75	1.8	
11	10,380	75.00	10.9	Upper Marker

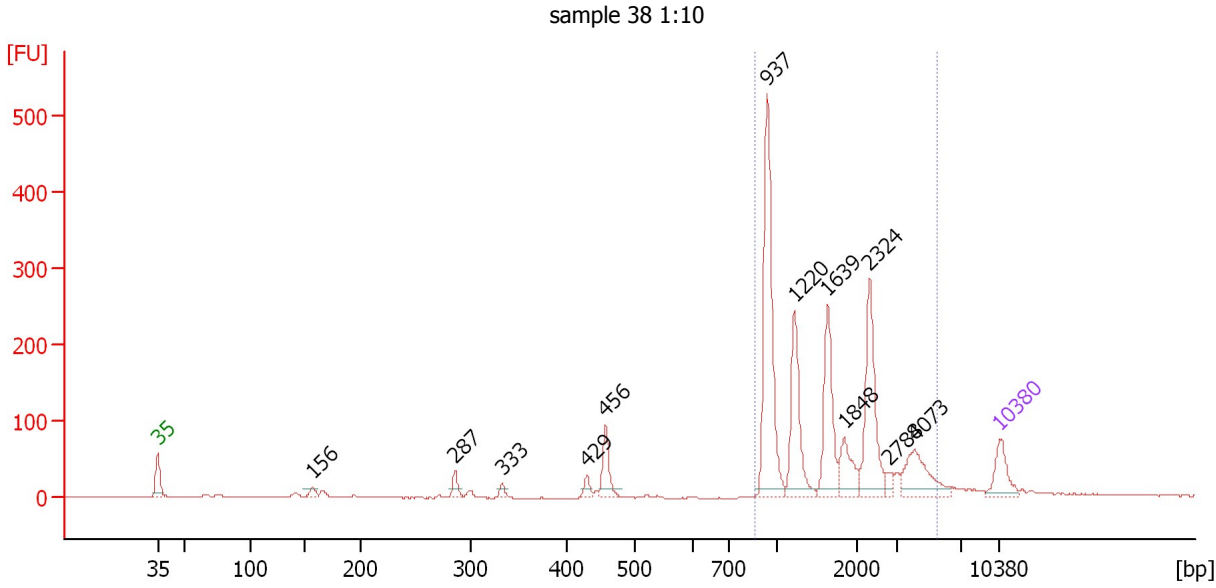
Region table for sample 5 : sample 37 1:23

From [bp]	To [bp]	Average Size [bp]	Molarity [pmol/l]	Conc. [pg/μl]	Corr. Area	% of Total	Size distribution in CV [%]	Color
841	5,675	1,829	1,616.3	1,591.31	2,374.8	94	50.4	Blue

Assay Class: High Sensitivity DNA Assay
 Data Path: C:\...ettings\Bioanalyzer\2013-04-02\2013-04-02_001_WB_BioA-4.xad

Created: 4/2/2013 9:51:34 AM
 Modified: 4/2/2013 10:48:59 AM

Electropherogram Summary Continued ...



Setpoint Deviations for sample 6 : sample 38 1:10

Height Threshold [FU] : 10

Overall Results for sample 6 : sample 38 1:10

Number of peaks found: 12 Corr. Area 1: 1,397.8
 Noise: 0.7

Peak table for sample 6 : sample 38 1:10

Peak	Size [bp]	Conc. [pg/μl]	Molarity [pmol/l]	Observations
1	35	125.00	5,411.3	Lower Marker
2	156	24.03	232.7	
3	287	36.88	195.0	
4	333	16.49	75.0	
5	429	25.20	89.0	
6	456	93.31	309.9	
7	937	516.00	834.7	
8	1,220	226.75	281.6	
9	1,639	211.28	195.3	
10	1,848	91.01	74.6	
11	2,324	252.24	164.5	
12	2,788	19.45	10.6	
13	4,073	134.98	50.2	
14	10,380	75.00	10.9	Upper Marker

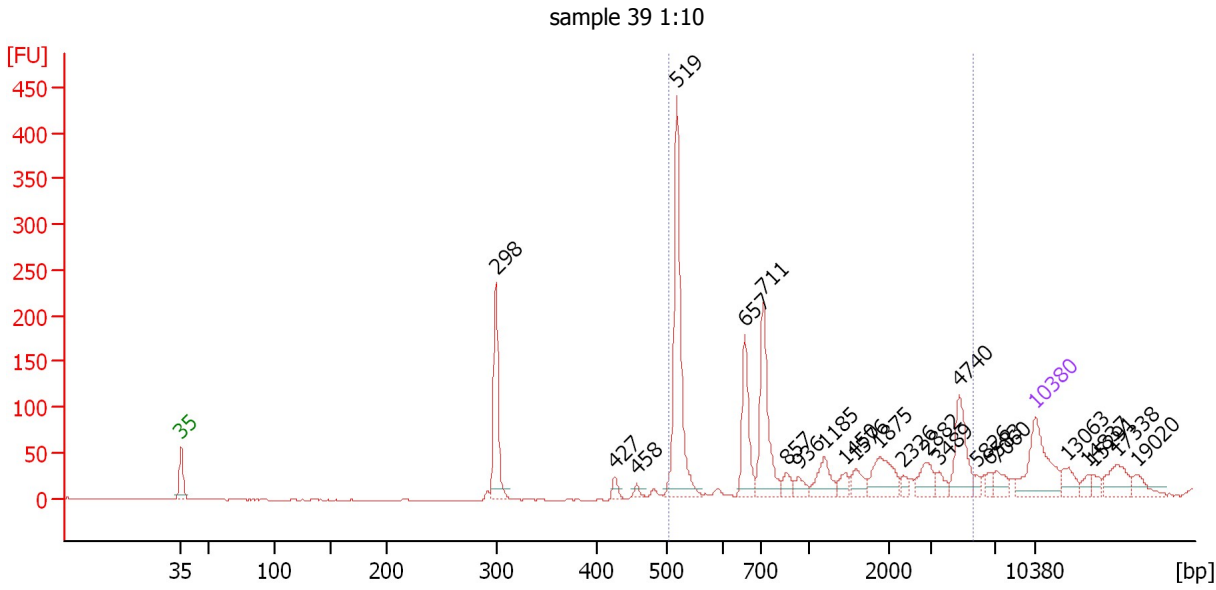
Region table for sample 6 : sample 38 1:10

From [bp]	To [bp]	Average Size [bp]	Molarity [pmol/l]	Conc. [pg/μl]	Corr. Area	% of Total	Size distribution in CV [%]	Color
865	5,562	1,802	1,561.4	1,443.95	1,397.8	84	55.1	Blue

Assay Class: High Sensitivity DNA Assay
 Data Path: C:\...ettings\Bioanalyzer\2013-04-02\2013-04-02_001_WB_BioA-4.xad

Created: 4/2/2013 9:51:34 AM
 Modified: 4/2/2013 10:48:59 AM

Electropherogram Summary Continued ...



Setpoint Deviations for sample 7 : sample 39 1:10

Height Threshold [FU] : 10

Overall Results for sample 7 : sample 39 1:10

Number of peaks found: 24 Corr. Area 1: 1,106.9
 Noise: 0.7

Peak table for sample 7 : sample 39 1:10

Peak	Size [bp]	Conc. [pg/μl]	Molarity [pmol/l]	Observations
1	35	125.00	5,411.3	Lower Marker
2	298	136.18	691.8	
3	427	11.06	39.3	
4	458	7.83	25.9	
5	519	256.78	750.2	
6	657	89.94	207.4	
7	711	131.42	280.1	
8	857	16.51	29.2	
9	936	15.29	24.7	
10	1,185	36.26	46.4	
11	1,450	14.41	15.1	
12	1,576	21.41	20.6	
13	1,875	49.44	39.9	
14	2,326	8.72	5.7	
15	2,882	27.85	14.6	
16	3,489	12.36	5.4	
17	4,740	62.22	19.9	
18	5,826	6.79	1.8	
19	6,583	8.08	1.9	
20	7,060	16.90	3.6	
21	10,380	75.00	10.9	Upper Marker
22	13,063	0.00	0.0	


Assay Class: High Sensitivity DNA Assay
Data Path: C:\...ettings\Bioanalyzer\2013-04-02\2013-04-02_001_WB_BioA-4.xad

Created: 4/2/2013 9:51:34 AM
Modified: 4/2/2013 10:48:59 AM

Electropherogram Summary Continued ...**... Peak table for sample 7 : sample 39 1:10**

Peak	Size [bp]	Conc. [pg/μl]	Molarity [pmol/l]	Observations
23	14,837	0.00	0.0	
24	15,291	0.00	0.0	
25	17,338	0.00	0.0	
26	19,020	0.00	0.0	

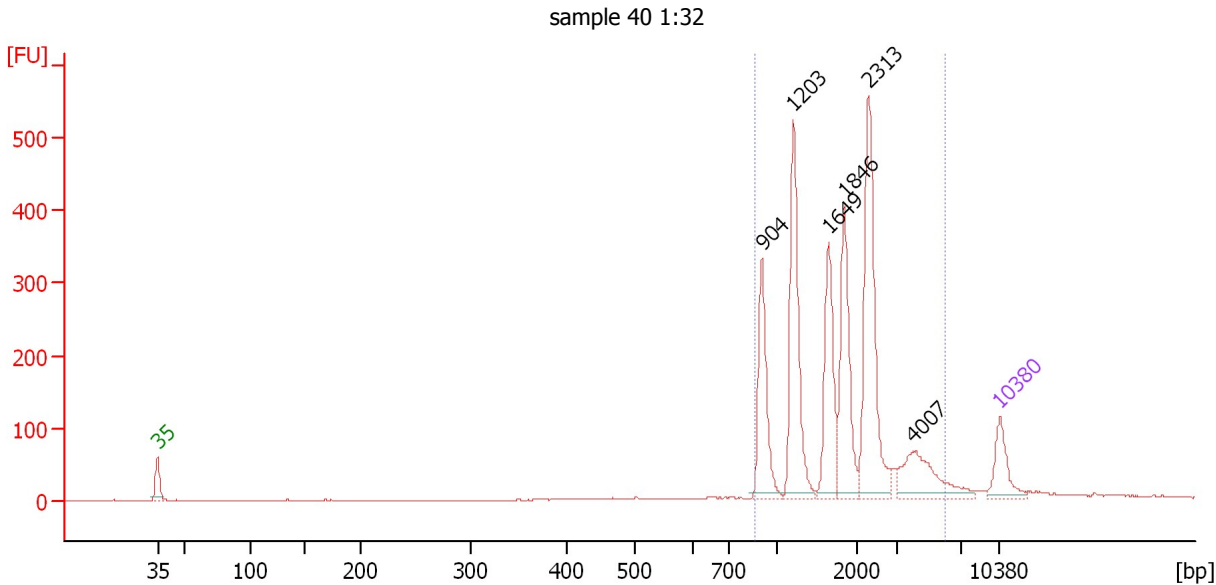
Region table for sample 7 : sample 39 1:10

From [bp]	To [bp]	Average Size [bp]	Molarity [pmol/l]	Conc. [pg/μl]	Corr. Area	% of Total	Size distribution in CV [%]	Color
505	5,568	1,494	1,367.9	698.43	1,106.9	74	94.0	

Assay Class: High Sensitivity DNA Assay
 Data Path: C:\...ettings\Bioanalyzer\2013-04-02\2013-04-02_001_WB_BioA-4.xad

Created: 4/2/2013 9:51:34 AM
 Modified: 4/2/2013 10:48:59 AM

Electropherogram Summary Continued ...



Setpoint Deviations for sample 8 : sample 40 1:32

Height Threshold [FU] : 10

Overall Results for sample 8 : sample 40 1:32

Number of peaks found: 6 Corr. Area 1: 2,137.6
 Noise: 0.6

Peak table for sample 8 : sample 40 1:32

Peak	Size [bp]	Conc. [pg/μl]	Molarity [pmol/l]	Observations
1	35	125.00	5,411.3	Lower Marker
2	904	217.25	364.2	
3	1,203	325.73	410.4	
4	1,649	206.25	189.6	
5	1,846	230.14	188.9	
6	2,313	362.26	237.3	
7	4,007	143.39	54.2	
8	10,380	75.00	10.9	Upper Marker

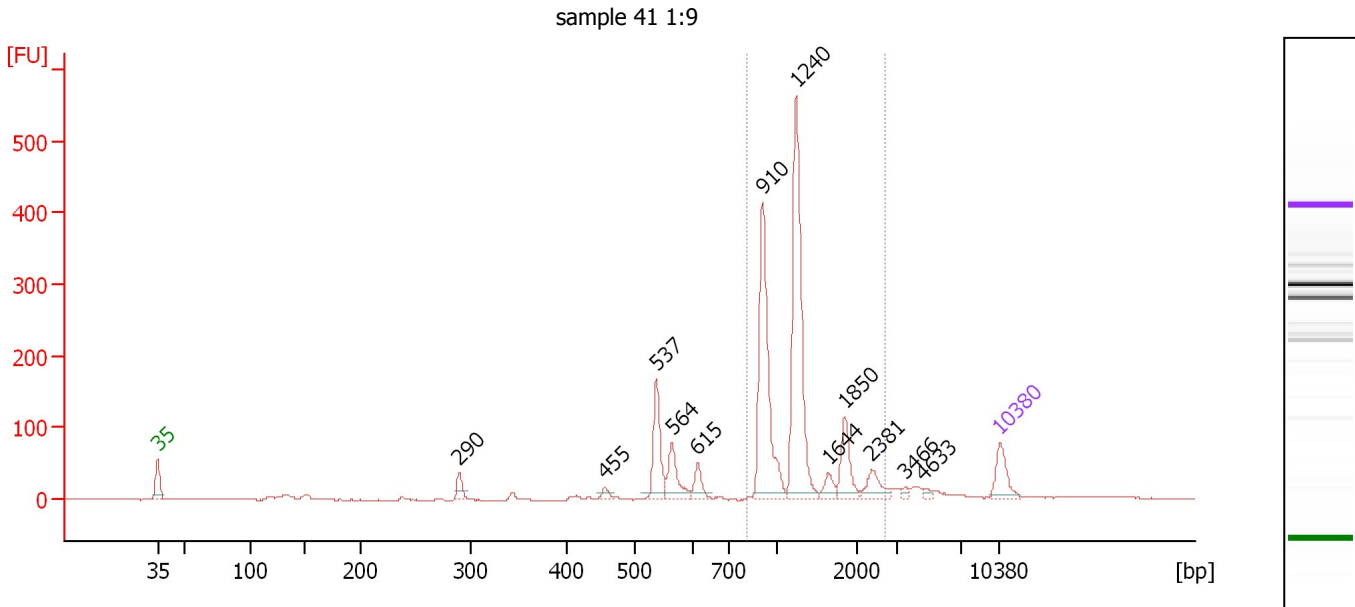
Region table for sample 8 : sample 40 1:32

From [bp]	To [bp]	Average Size [bp]	Molarity [pmol/l]	Conc. [pg/μl]	Corr. Area	% of Total	Size distribution in CV [%]	Color
866	6,014	1,945	1,368.4	1,456.54	2,137.6	94	47.9	Blue

Assay Class: High Sensitivity DNA Assay
 Data Path: C:\...ettings\Bioanalyzer\2013-04-02\2013-04-02_001_WB_BioA-4.xad

Created: 4/2/2013 9:51:34 AM
 Modified: 4/2/2013 10:48:59 AM

Electropherogram Summary Continued ...



Setpoint Deviations for sample 9 : sample 41 1:9

Height Threshold [FU] : 10

Overall Results for sample 9 : sample 41 1:9

Number of peaks found: 12 Corr. Area 1: 1,102.2
 Noise: 0.8

Peak table for sample 9 : sample 41 1:9

Peak	Size [bp]	Conc. [pg/μl]	Molarity [pmol/l]	Observations
1	35	125.00	5,411.3	Lower Marker
2	290	42.98	224.2	
3	455	19.41	64.6	
4	537	178.82	504.9	
5	564	111.48	299.2	
6	615	53.97	133.0	
7	910	499.38	831.3	
8	1,240	577.41	705.8	
9	1,644	36.59	33.7	
10	1,850	107.08	87.7	
11	2,381	59.71	38.0	
12	3,466	11.35	5.0	
13	4,633	12.44	4.1	
14	10,380	75.00	10.9	Upper Marker

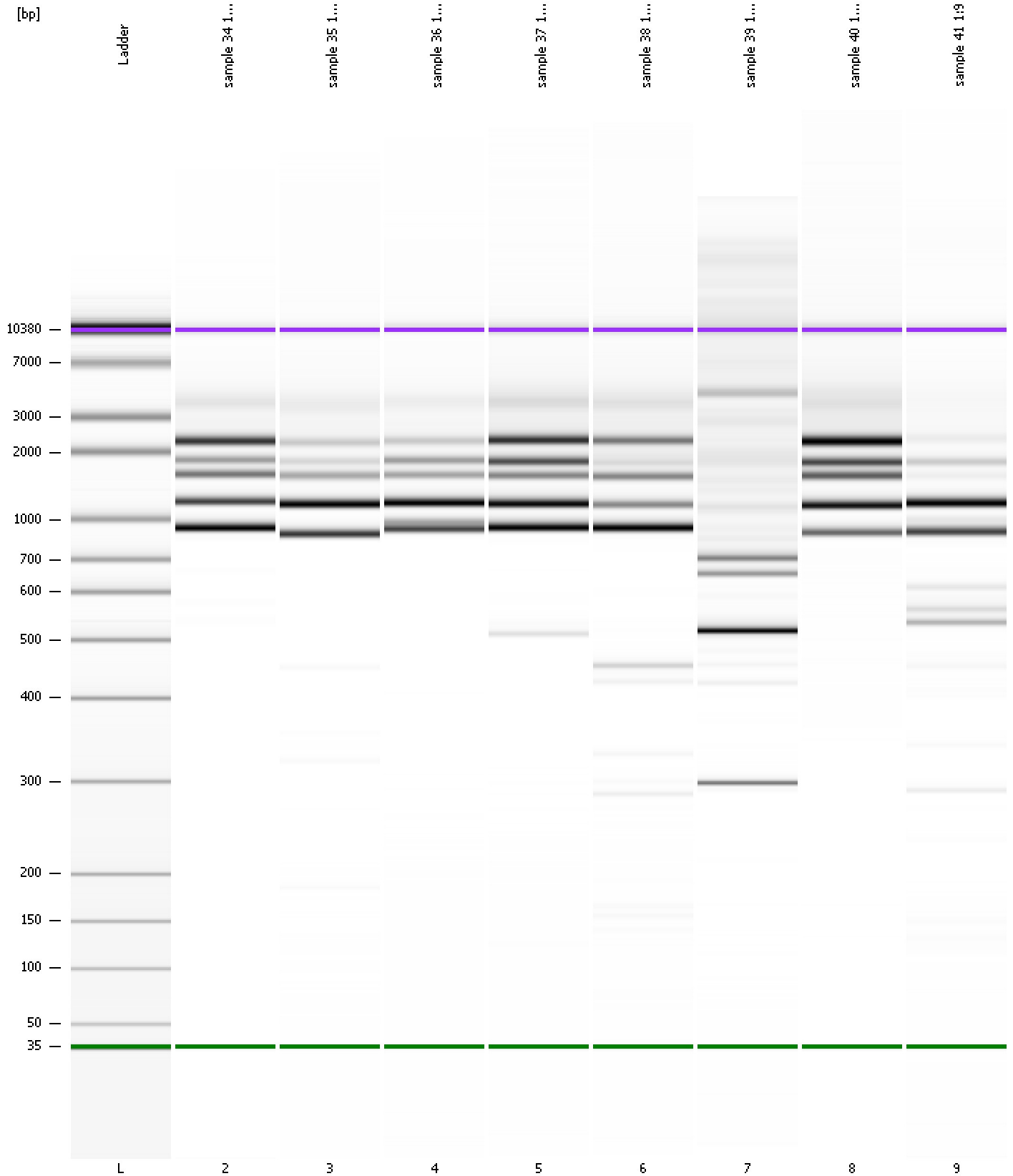
Region table for sample 9 : sample 41 1:9

From [bp]	To [bp]	Average Size [bp]	Molarity [pmol/l]	Conc. [pg/μl]	Corr. Area	% of Total	Size distribution in CV [%]	Color
805	2,705	1,266	1,636.3	1,269.41	1,102.2	70	30.6	Blue

Assay Class: High Sensitivity DNA Assay
Data Path: C:\...ettings\Bioanalyzer\2013-04-02\2013-04-02_001_WB_BioA-4.xad

Created: 4/2/2013 9:51:34 AM
Modified: 4/2/2013 10:48:59 AM

Gel Image

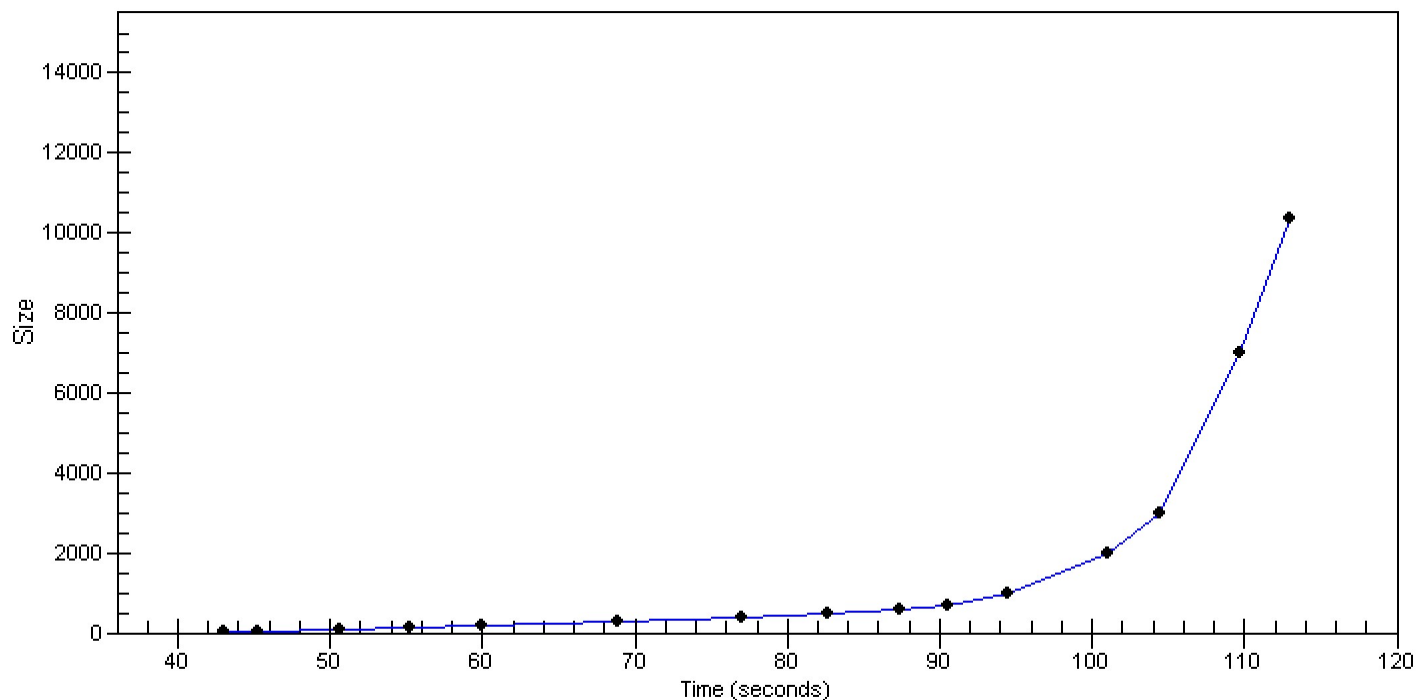


Assay Class: High Sensitivity DNA Assay
Data Path: C:\...ettings\Bioanalyzer\2013-04-02\2013-04-02_001_WB_BioA-4.xad

Created: 4/2/2013 9:51:34 AM
Modified: 4/2/2013 10:48:59 AM

Curves

Standard Curve



Assay Class: High Sensitivity DNA Assay
 Data Path: C:\...ettings\Bioanalyzer\2013-04-02\2013-04-02_001_WB_BioA-4.xad
 Created: 4/2/2013 9:51:34 AM
 Modified: 4/2/2013 10:48:59 AM

Run Logbook

Description	Number	Source	Category	Sub Category	Time	Time Zone	User	Host
Run ended on port 1 (Number of wells acquired: 10)		Instrument	Run		4/2/2013 10:27:10 AM	(GMT --07:00) Pacific Standard Time	UC Davis	D8XSMGH1
Run started on port 1 (File: C:\Documents and Settings\Bioanalyzer\2013-04-02\2013-04-02_001.xad)		Instrument	Run		4/2/2013 9:51:40 AM	(GMT --07:00) Pacific Standard Time	UC Davis	D8XSMGH1
Product Number : G2938B		Instrument	Run		4/2/2013 9:51:40 AM	(GMT --07:00) Pacific Standard Time	UC Davis	D8XSMGH1
Name :		Instrument	Run		4/2/2013 9:51:40 AM	(GMT --07:00) Pacific Standard Time	UC Davis	D8XSMGH1
Vendor : Agilent Technologies		Instrument	Run		4/2/2013 9:51:40 AM	(GMT --07:00) Pacific Standard Time	UC Davis	D8XSMGH1
Serial# : DE13701086		Instrument	Run		4/2/2013 9:51:40 AM	(GMT --07:00) Pacific Standard Time	UC Davis	D8XSMGH1
Firmware : C.01.069		Instrument	Run		4/2/2013 9:51:40 AM	(GMT --07:00) Pacific Standard Time	UC Davis	D8XSMGH1
Cartridge : Electrode		Instrument	Run		4/2/2013 9:51:40 AM	(GMT --07:00) Pacific Standard Time	UC Davis	D8XSMGH1