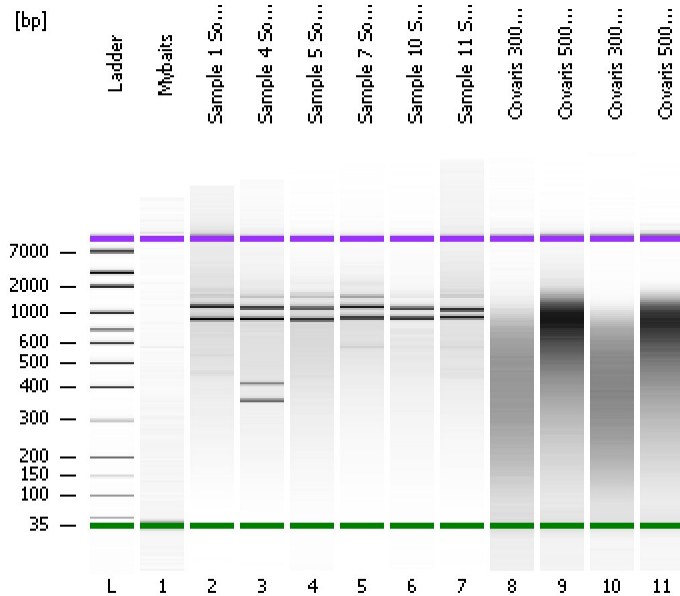


Assay Class: High Sensitivity DNA Assay
Data Path: C:\...ents and Settings\Bioanalyzer\2013-04-03\2013-04-03_005.xad

Created: 4/3/2013 4:05:07 PM
Modified: 4/5/2013 9:22:44 AM

Electrophoresis File Run Summary



Instrument Information:

Instrument Name: DE13701086 Firmware: C.01.069
Serial#: DE13701086 Type: G2938B

Assay Information:

Assay Origin Path: C:\Program Files\Agilent\2100 bioanalyzer\2100 expert\assays\dsDNA\High Sensitivity DNA.xsy
Assay Class: High Sensitivity DNA Assay
Version: 1.03
Assay Comments: Copyright © 2003-2010 Agilent Technologies

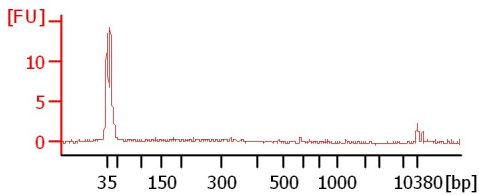
Chip Information:

Chip Lot #:
Reagent Kit Lot #:
Chip Comments:

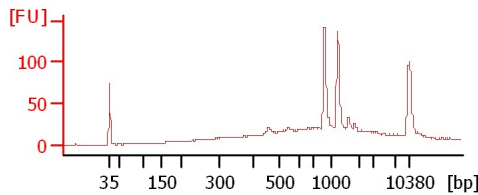
Mybaits

Sample 1 Soni 1:6

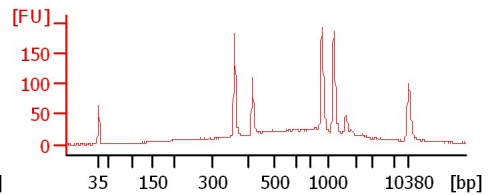
Sample 4 Soni 1:6



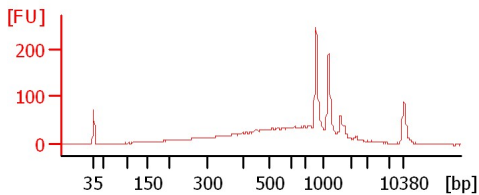
Sample 5 Soni 1:6



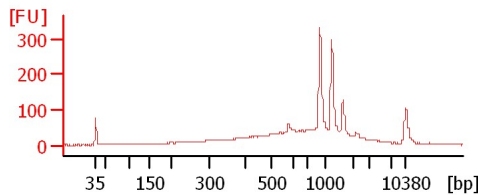
Sample 7 Soni 1:6



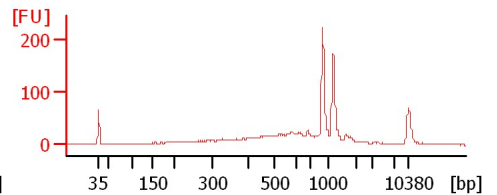
Sample 10 Soni 1:6



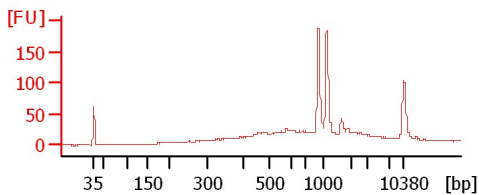
Sample 11 Soni 1:6



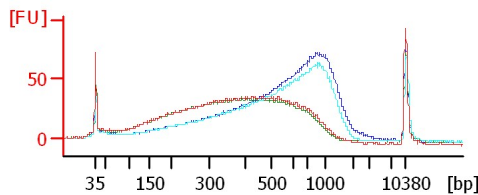
Covaris 300bp 50ul 1:5



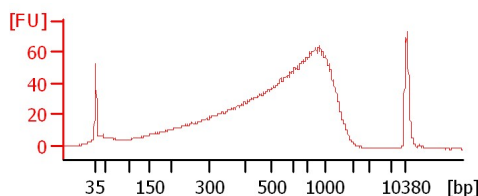
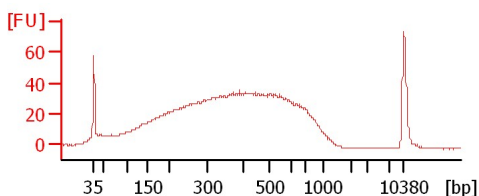
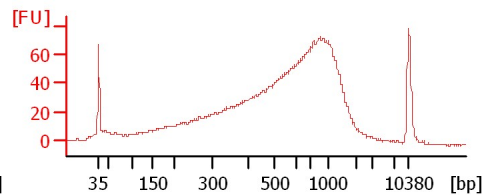
Covaris 500bp 50ul 1:5



Covaris 300bp 130ul 1:5



Covaris 500bp 130ul 1:5



Assay Class: High Sensitivity DNA Assay
 Data Path: C:\...ents and Settings\Bioanalyzer\2013-04-03\2013-04-03_005.xad

Created: 4/3/2013 4:05:07 PM
 Modified: 4/5/2013 9:22:44 AM

Electrophoresis File Run Summary (Chip Summary)

Sample Name	Sample Comment	Rest. Digest	Status	Observation	Result Label	Result Color
Mybaits		<input type="checkbox"/>	✓			
Sample 1 Soni 1:6		<input type="checkbox"/>	✓			
Sample 4 Soni 1:6		<input type="checkbox"/>	✓			
Sample 5 Soni 1:6		<input type="checkbox"/>	✓			
Sample 7 Soni 1:6		<input type="checkbox"/>	✓			
Sample 10 Soni 1:6		<input type="checkbox"/>	✓			
Sample 11 Soni 1:6		<input type="checkbox"/>	✓			
Covaris 300bp 50ul 1:5		<input type="checkbox"/>	✓			
Covaris 500bp 50ul 1:5		<input type="checkbox"/>	✓			
Covaris 300bp 130ul 1:5		<input type="checkbox"/>	✓			
Covaris 500bp 130ul 1:5		<input type="checkbox"/>	✓			
Ladder		<input type="checkbox"/>	✓			

Chip Lot #

Reagent Kit Lot #

Chip Comments :

Assay Class: High Sensitivity DNA Assay
Data Path: C:\...ents and Settings\Bioanalyzer\2013-04-03\2013-04-03_005.xad

Created: 4/3/2013 4:05:07 PM
Modified: 4/5/2013 9:22:44 AM

Electrophoresis Assay Details

General Analysis Settings

Number of Available Sample and Ladder Wells (Max.) : 12
Minimum Visible Range [s] : 32
Maximum Visible Range [s] : 138
Start Analysis Time Range [s] : 33
End Analysis Time Range [s] : 137.5
Ladder Concentration [pg/ μ l] : 1950
Uses Standard Area for Ladder Fragments
Lower Marker Concentration [pg/ μ l] : 125
Upper Marker Concentration [pg/ μ l] : 75
Used Upper Marker for Quantitation
Standard Curve Fit is Point to Point
Show Data Aligned to Lower and Upper Marker

Integrator Settings

Integration Start Time [s] : 33.05
Integration End Time [s] : 137
Slope Threshold : 0.8
Height Threshold [FU] : 5
Area Threshold : 0.1
Width Threshold [s] : 0.6
Baseline Plateau [s] : 0.5

Filter Settings

Filter Width [s] : 0.5
Polynomial Order : 4

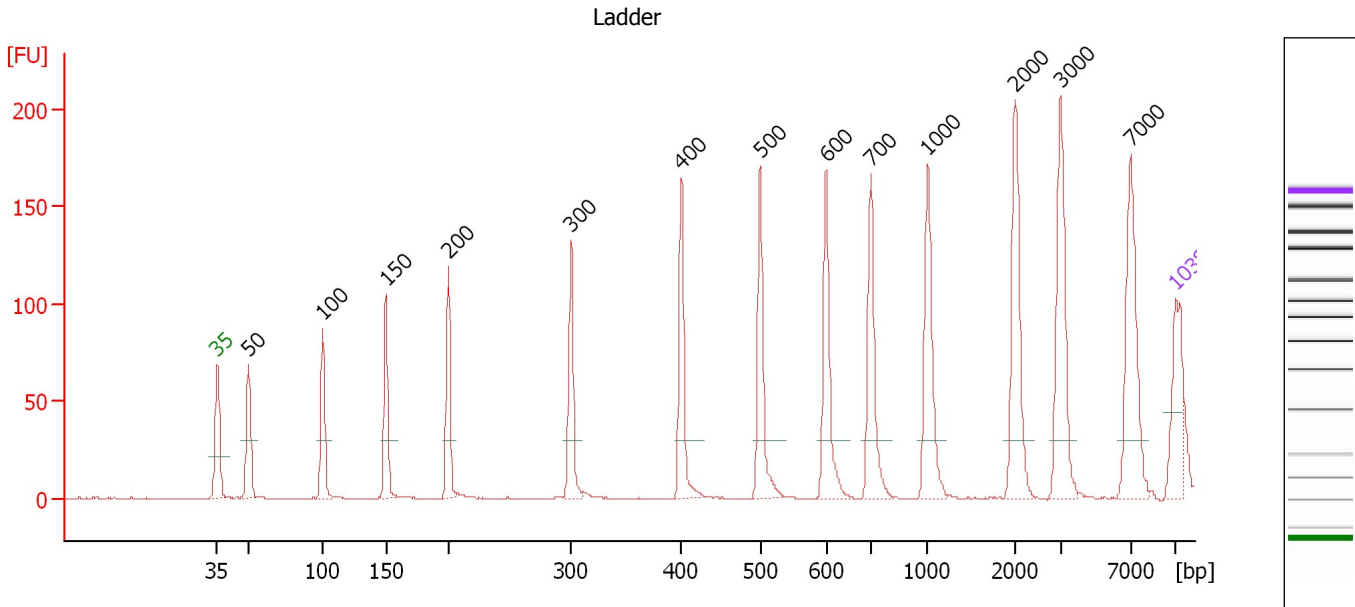
Ladder

Ladder Peak	Size	Area
1	35	160
2	50	210
3	100	208
4	150	221
5	200	242
6	300	270
7	400	305
8	500	306
9	600	336
10	700	321
11	1000	366
12	2000	413
13	3000	411
14	7000	400
15	10380	214

Assay Class: High Sensitivity DNA Assay
 Data Path: C:\...ents and Settings\Bioanalyzer\2013-04-03\2013-04-03_005.xad

Created: 4/3/2013 4:05:07 PM
 Modified: 4/5/2013 9:22:44 AM

Electropherogram Summary



Overall Results for Ladder

Noise: 0.1

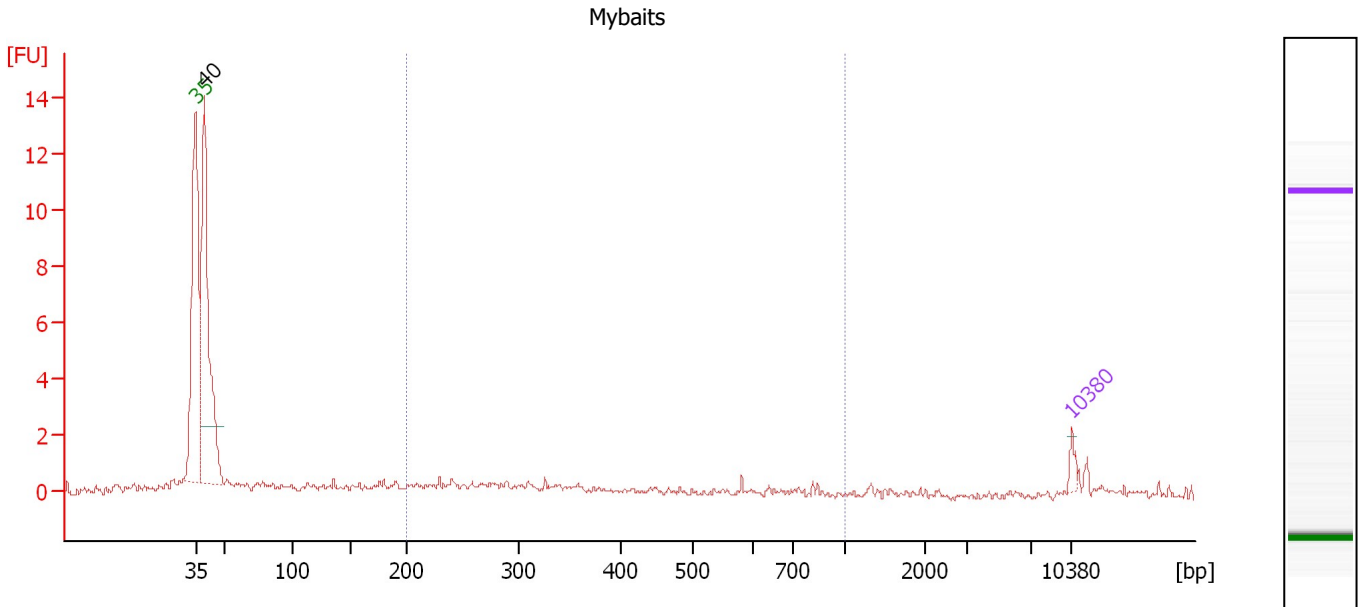
Peak table for Ladder

Peak	Size [bp]	Conc. [pg/µl]	Molarity [pmol/l]	Observations
1	35	125.00	5,411.3	Lower Marker
2	50	150.00	4,545.5	Ladder Peak
3	100	150.00	2,272.7	Ladder Peak
4	150	150.00	1,515.2	Ladder Peak
5	200	150.00	1,136.4	Ladder Peak
6	300	150.00	757.6	Ladder Peak
7	400	150.00	568.2	Ladder Peak
8	500	150.00	454.5	Ladder Peak
9	600	150.00	378.8	Ladder Peak
10	700	150.00	324.7	Ladder Peak
11	1,000	150.00	227.3	Ladder Peak
12	2,000	150.00	113.6	Ladder Peak
13	3,000	150.00	75.8	Ladder Peak
14	7,000	150.00	32.5	Ladder Peak
15	10,380	75.00	10.9	Upper Marker

Assay Class: High Sensitivity DNA Assay
 Data Path: C:\...ents and Settings\Bioanalyzer\2013-04-03\2013-04-03_005.xad

Created: 4/3/2013 4:05:07 PM
 Modified: 4/5/2013 9:22:44 AM

Electropherogram Summary Continued ...



Setpoint Deviations for sample 1 : Mybaits

Height Threshold [FU] : 2

Overall Results for sample 1 : Mybaits

Number of peaks found: 1 Corr. Area 1: 11.5
 Noise: 0.1

Peak table for sample 1 : Mybaits

Peak	Size [bp]	Conc. [pg/μl]	Molarity [pmol/l]	Observations
1	35	125.00	5,411.3	Lower Marker
2	40	4,151.09	159,135.7	
3	10,380	75.00	10.9	Upper Marker

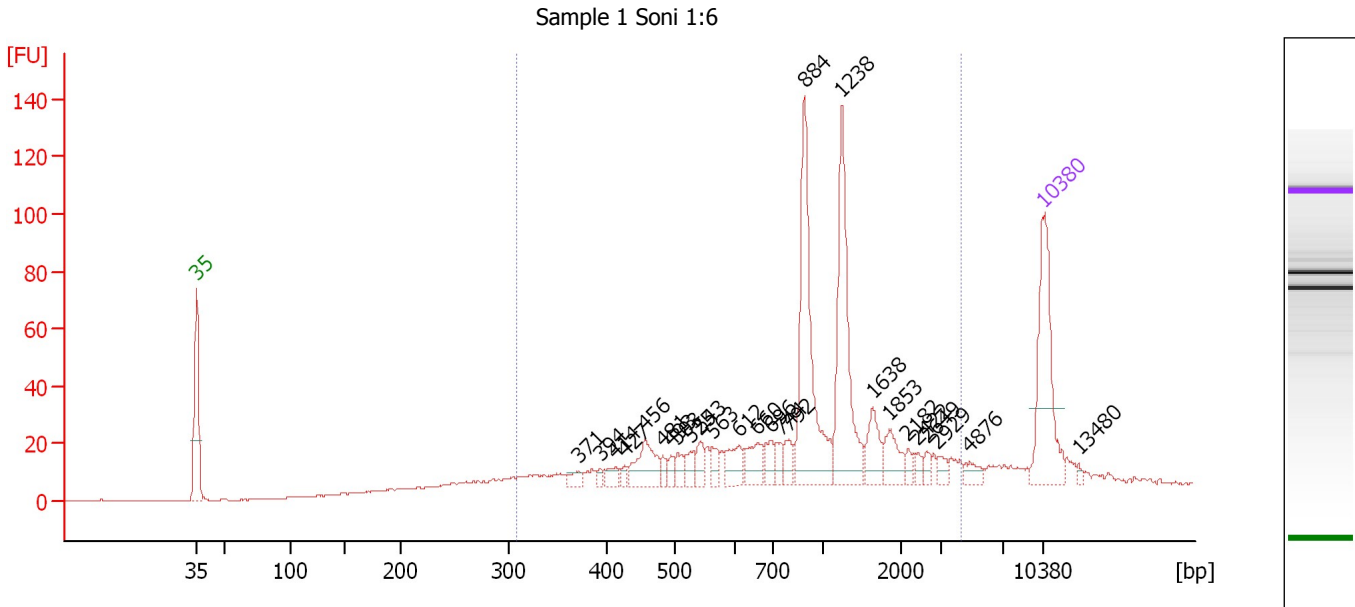
Region table for sample 1 : Mybaits

From [bp]	To [bp]	Average Size [bp]	Molarity [pmol/l]	Conc. [pg/μl]	Corr. Area	% of Total	Size distribution in CV [%]	Color
200	1,000	375	7,082.3	1,439.70	11.5	20	42.9	Blue

Assay Class: High Sensitivity DNA Assay
 Data Path: C:\...ents and Settings\Bioanalyzer\2013-04-03\2013-04-03_005.xad

Created: 4/3/2013 4:05:07 PM
 Modified: 4/5/2013 9:22:44 AM

Electropherogram Summary Continued ...



Overall Results for sample 2 : Sample 1 Soni 1:6

Number of peaks found: 26 Corr. Area 1: 763.2
 Noise: 0.2

Peak table for sample 2 : Sample 1 Soni 1:6

Peak	Size [bp]	Conc. [pg/μl]	Molarity [pmol/l]	Observations
1	35	125.00	5,411.3	Lower Marker
2	371	8.42	34.3	
3	394	4.43	17.1	
4	414	9.63	35.3	
5	427	5.03	17.9	
6	456	36.69	121.9	
7	481	7.00	22.1	
8	493	7.05	21.7	
9	503	10.24	30.8	
10	525	12.47	36.0	
11	543	11.98	33.5	
12	563	11.45	30.8	
13	612	19.21	47.5	
14	660	20.85	47.8	
15	696	13.35	29.1	
16	744	11.51	23.4	
17	792	12.90	24.7	
18	884	136.90	234.7	
19	1,238	110.87	135.7	
20	1,638	23.81	22.0	
21	1,853	21.22	17.4	
22	2,182	4.87	3.4	
23	2,422	4.48	2.8	
24	2,649	5.51	3.2	
25	2,929	6.60	3.4	
26	4,876	8.32	2.6	

Assay Class: High Sensitivity DNA Assay
Data Path: C:\...ents and Settings\Bioanalyzer\2013-04-03\2013-04-03_005.xad

Created: 4/3/2013 4:05:07 PM
Modified: 4/5/2013 9:22:44 AM

Electropherogram Summary Continued ...**... Peak table for sample 2 : Sample 1 Soni 1:6**

Peak	Size [bp]	Conc. [pg/μl]	Molarity [pmol/l]	Observations
27	10,380	75.00	10.9	Upper Marker
28	13,480	0.00	0.0	

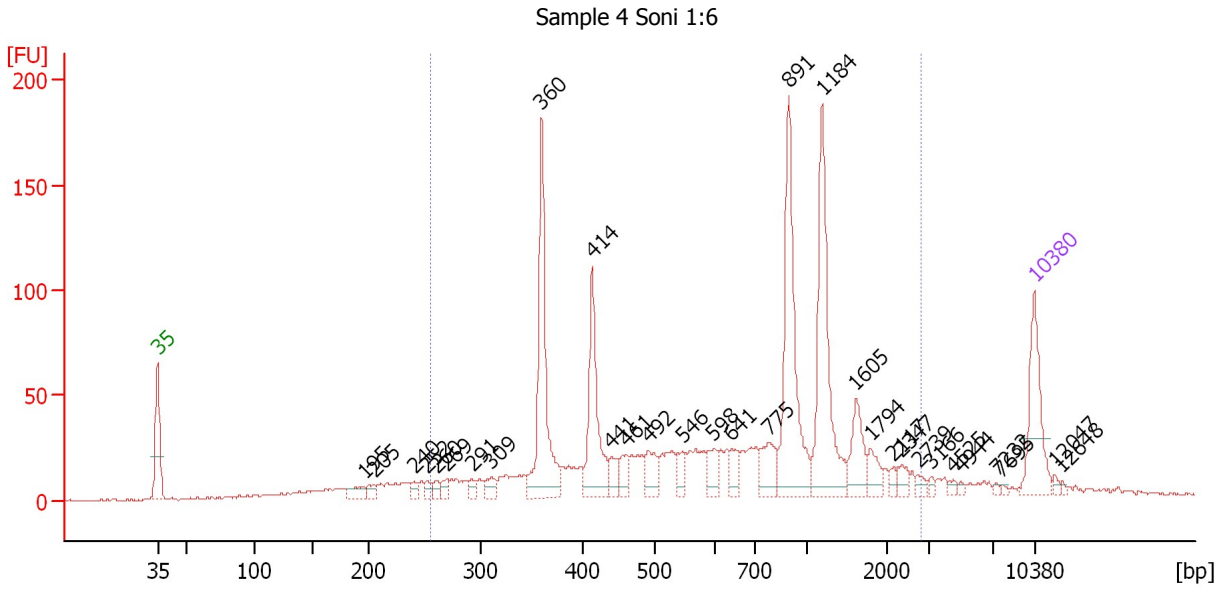
Region table for sample 2 : Sample 1 Soni 1:6

From [bp]	To [bp]	Average Size [bp]	Molarity [pmol/l]	Conc. [pg/μl]	Corr. Area	% of Total	Size distribution in CV [%]	Color
307	4,282	1,066	1,425.1	660.30	763.2	84	64.1	■

Assay Class: High Sensitivity DNA Assay
 Data Path: C:\...ents and Settings\Bioanalyzer\2013-04-03\2013-04-03_005.xad

Created: 4/3/2013 4:05:07 PM
 Modified: 4/5/2013 9:22:44 AM

Electropherogram Summary Continued ...



Overall Results for sample 3 : Sample 4 Soni 1:6

Number of peaks found: 31 Corr. Area 1: 1,276.4
 Noise: 0.6

Peak table for sample 3 : Sample 4 Soni 1:6

Peak	Size [bp]	Conc. [pg/μl]	Molarity [pmol/l]	Observations
1	35	125.00	5,411.3	Lower Marker
2	195	22.64	175.5	
3	205	12.27	90.8	
4	240	11.35	71.6	
5	252	10.34	62.3	
6	260	10.96	63.8	
7	269	12.56	70.7	
8	291	11.47	59.6	
9	309	18.80	92.1	
10	360	218.63	921.0	
11	414	138.75	508.0	
12	441	23.40	80.4	
13	461	25.70	84.4	
14	492	33.00	101.7	
15	546	22.24	61.8	
16	598	26.81	68.0	
17	641	22.87	54.1	
18	775	41.05	80.3	
19	891	208.72	355.0	
20	1,184	183.53	234.9	
21	1,605	46.61	44.0	
22	1,794	21.38	18.1	
23	2,117	6.72	4.8	
24	2,347	12.08	7.8	
25	2,739	7.25	4.0	
26	3,166	4.15	2.0	

Assay Class: High Sensitivity DNA Assay
 Data Path: C:\...ents and Settings\Bioanalyzer\2013-04-03\2013-04-03_005.xad


Created: 4/3/2013 4:05:07 PM
 Modified: 4/5/2013 9:22:44 AM

Electropherogram Summary Continued ...

... Peak table for sample 3 : Sample 4 Soni 1:6

Peak	Size [bp]	Conc. [pg/μl]	Molarity [pmol/l]	Observations
27	4,525	4.82	1.6	
28	4,944	2.96	0.9	
29	7,232	2.57	0.5	
30	7,695	2.66	0.5	
31	10,380	75.00	10.9	Upper Marker
32	12,047	0.00	0.0	
33	12,648	0.00	0.0	

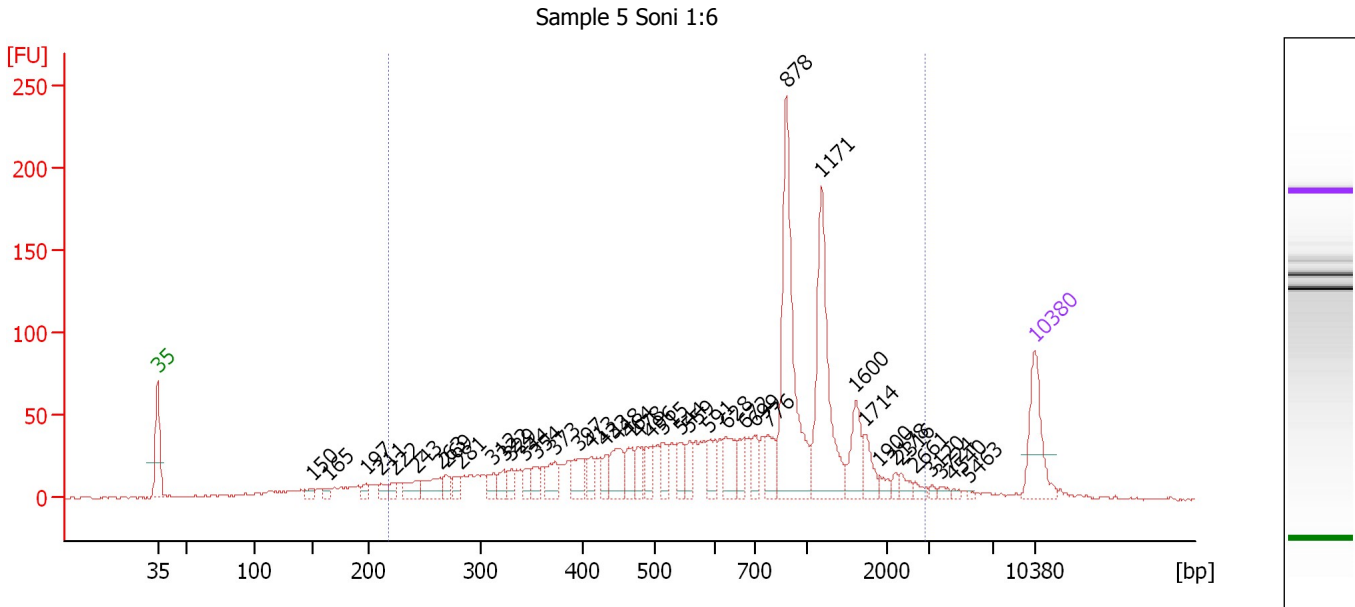
Region table for sample 3 : Sample 4 Soni 1:6

From [bp]	To [bp]	Average Size [bp]	Molarity [pmol/l]	Conc. [pg/μl]	Corr. Area	% of Total	Size distribution in CV [%]	Color
255	2,824	815	3,959.5	1,409.84	1,276.4	87	59.8	

Assay Class: High Sensitivity DNA Assay
 Data Path: C:\...ents and Settings\Bioanalyzer\2013-04-03\2013-04-03_005.xad

Created: 4/3/2013 4:05:07 PM
 Modified: 4/5/2013 9:22:44 AM

Electropherogram Summary Continued ...



Overall Results for sample 4 : Sample 5 Soni 1:6

Number of peaks found: 42 Corr. Area 1: 1,566.3
 Noise: 0.6

Peak table for sample 4 : Sample 5 Soni 1:6

Peak	Size [bp]	Conc. [pg/μl]	Molarity [pmol/l]	Observations
1	35	125.00	5,411.3	Lower Marker
2	150	13.50	136.3	
3	165	9.76	89.5	
4	197	12.96	99.6	
5	211	17.83	128.1	
6	222	14.01	95.6	
7	243	32.84	205.0	
8	263	41.07	236.5	
9	269	18.92	106.7	
10	281	18.14	97.9	
11	312	23.80	115.6	
12	322	24.16	113.6	
13	329	18.54	85.4	
14	344	20.11	88.6	
15	354	26.60	113.8	
16	373	37.35	151.7	
17	397	42.14	160.7	
18	413	23.90	87.7	
19	433	22.76	79.7	
20	448	53.47	180.9	
21	464	36.07	117.7	
22	478	26.54	84.1	
23	496	26.64	81.4	
24	515	31.56	92.8	
25	544	28.46	79.2	
26	559	26.47	71.8	

Assay Class: High Sensitivity DNA Assay
 Data Path: C:\...ents and Settings\Bioanalyzer\2013-04-03\2013-04-03_005.xad


Created: 4/3/2013 4:05:07 PM
 Modified: 4/5/2013 9:22:44 AM

Electropherogram Summary Continued ...

... Peak table for sample 4 : Sample 5 Soni 1:6

Peak	Size [bp]	Conc. [pg/μl]	Molarity [pmol/l]	Observations
27	591	33.96	87.1	
28	628	46.99	113.3	
29	672	28.65	64.6	
30	699	29.52	64.0	
31	776	40.26	78.6	
32	878	279.18	481.6	
33	1,171	203.70	263.6	
34	1,600	53.35	50.5	
35	1,714	29.67	26.2	
36	1,900	9.92	7.9	
37	2,178	7.35	5.1	
38	2,316	11.97	7.8	
39	2,661	8.00	4.6	
40	3,120	4.72	2.3	
41	3,724	6.15	2.5	
42	4,540	3.58	1.2	
43	5,463	2.97	0.8	
44	10,380	75.00	10.9	Upper Marker

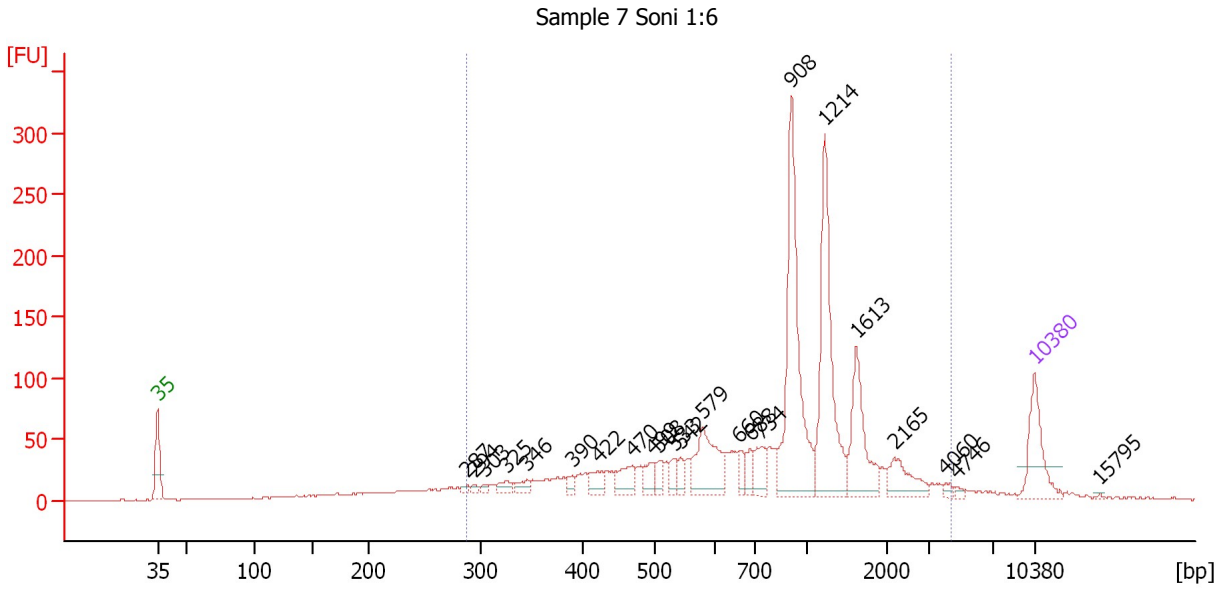
Region table for sample 4 : Sample 5 Soni 1:6

From [bp]	To [bp]	Average Size [bp]	Molarity [pmol/l]	Conc. [pg/μl]	Corr. Area	% of Total	Size distribution in CV [%]	Color
218	2,909	821	4,656.2	1,665.20	1,566.3	92	57.1	

Assay Class: High Sensitivity DNA Assay
 Data Path: C:\...ents and Settings\Bioanalyzer\2013-04-03\2013-04-03_005.xad

Created: 4/3/2013 4:05:07 PM
 Modified: 4/5/2013 9:22:44 AM

Electropherogram Summary Continued ...



Overall Results for sample 5 : Sample 7 Soni 1:6

Number of peaks found: 23 Corr. Area 1: 1,839.5
 Noise: 0.5

Peak table for sample 5 : Sample 7 Soni 1:6

Peak	Size [bp]	Conc. [pg/μl]	Molarity [pmol/l]	Observations
1	35	125.00	5,411.3	Lower Marker
2	287	5.77	30.4	
3	294	6.53	33.7	
4	303	7.04	35.2	
5	325	17.15	79.9	
6	346	17.77	77.8	
7	390	12.20	47.4	
8	422	28.79	103.4	
9	470	42.41	136.8	
10	499	26.24	79.7	
11	508	20.69	61.7	
12	533	21.11	60.0	
13	542	19.87	55.5	
14	579	116.72	305.5	
15	660	22.38	51.4	
16	688	22.93	50.5	
17	734	40.58	83.7	
18	908	315.97	527.2	
19	1,214	249.89	311.9	
20	1,613	112.66	105.8	
21	2,165	51.02	35.7	
22	4,060	6.35	2.4	
23	4,746	4.81	1.5	
24	10,380	75.00	10.9	Upper Marker
25	15,795	0.00	0.0	

Assay Class: High Sensitivity DNA Assay
Data Path: C:\...ents and Settings\Bioanalyzer\2013-04-03\2013-04-03_005.xad

Created: 4/3/2013 4:05:07 PM
Modified: 4/5/2013 9:22:44 AM

Electropherogram Summary Continued ...

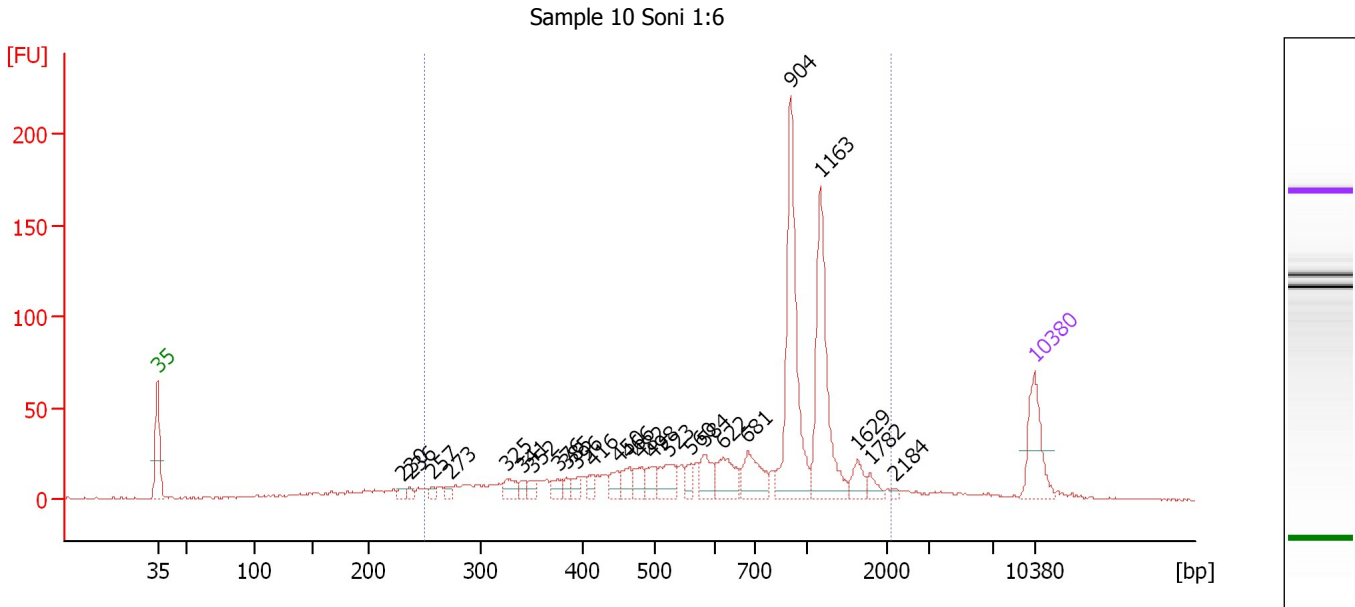
... Region table for sample 5 : Sample 7 Soni 1:6

From [bp]	To [bp]	Average Size [bp]	Molarity [pmol/l]	Conc. [pg/μl]	Corr. Area	% of Total	Size distribution in CV [%]	Color
287	4,344	1,010	3,525.7	1,579.90	1,839.5	88	60.1	■

Assay Class: High Sensitivity DNA Assay
 Data Path: C:\...ents and Settings\Bioanalyzer\2013-04-03\2013-04-03_005.xad

Created: 4/3/2013 4:05:07 PM
 Modified: 4/5/2013 9:22:44 AM

Electropherogram Summary Continued ...



Overall Results for sample 6 : Sample 10 Soni 1:6

Number of peaks found: 25 Corr. Area 1: 962.0
 Noise: 0.8

Peak table for sample 6 : Sample 10 Soni 1:6

Peak	Size [bp]	Conc. [pg/μl]	Molarity [pmol/l]	Observations
1	35	125.00	5,411.3	Lower Marker
2	230	9.55	63.0	
3	236	9.29	59.5	
4	257	10.90	64.4	
5	273	11.29	62.7	
6	325	28.12	131.1	
7	341	13.76	61.2	
8	352	17.80	76.7	
9	376	18.28	73.7	
10	385	13.35	52.6	
11	396	16.44	63.0	
12	416	18.06	65.9	
13	450	26.97	90.9	
14	466	27.45	89.3	
15	482	26.66	83.8	
16	498	29.82	90.7	
17	523	49.03	142.2	
18	560	21.09	57.0	
19	584	43.57	113.0	
20	622	57.67	140.4	
21	681	66.73	148.4	
22	904	277.10	464.2	
23	1,163	212.10	276.2	
24	1,629	25.80	24.0	
25	1,782	14.55	12.4	
26	2,184	3.91	2.7	

Assay Class: High Sensitivity DNA Assay
Data Path: C:\...ents and Settings\Bioanalyzer\2013-04-03\2013-04-03_005.xad

Created: 4/3/2013 4:05:07 PM
Modified: 4/5/2013 9:22:44 AM

Electropherogram Summary Continued ...**... Peak table for sample 6 : Sample 10 Soni 1:6**

Peak	Size [bp]	Conc. [pg/ μ l]	Molarity [pmol/l]	Observations
27	10,380	75.00	10.9	Upper Marker

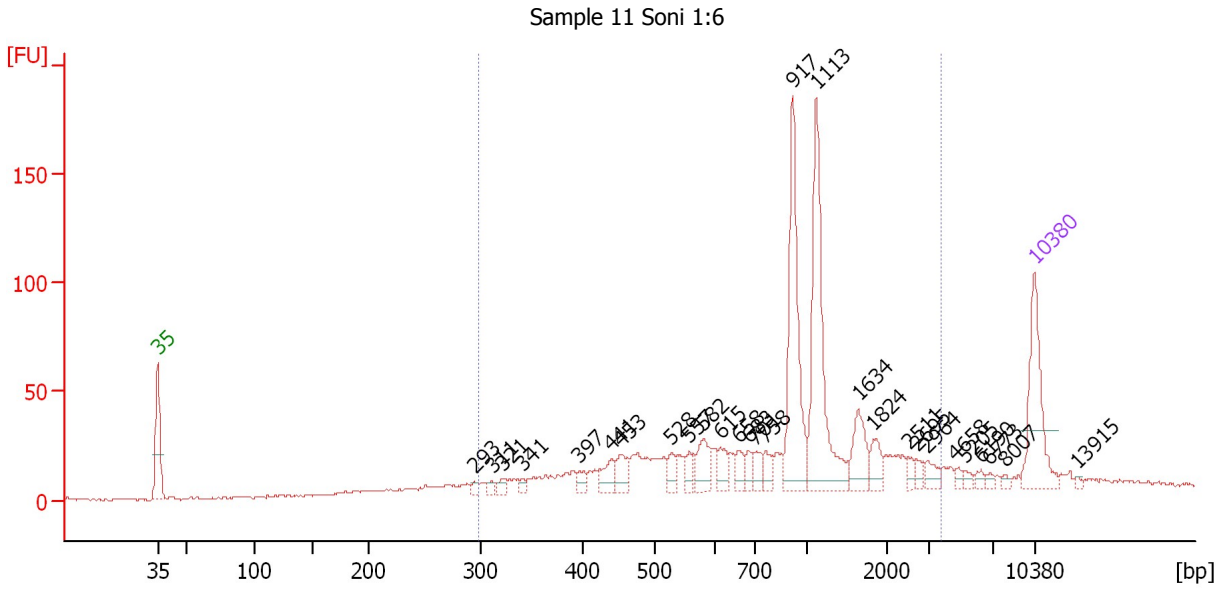
Region table for sample 6 : Sample 10 Soni 1:6

From [bp]	To [bp]	Average Size [bp]	Molarity [pmol/l]	Conc. [pg/ μ l]	Corr. Area	% of Total	Size distribution in CV [%]	Color
250	2,075	811	3,274.3	1,258.11	962.0	84	45.5	

Assay Class: High Sensitivity DNA Assay
 Data Path: C:\...ents and Settings\Bioanalyzer\2013-04-03\2013-04-03_005.xad

Created: 4/3/2013 4:05:07 PM
 Modified: 4/5/2013 9:22:44 AM

Electropherogram Summary Continued ...



Overall Results for sample 7 : Sample 11 Soni 1:6

Number of peaks found: 28 Corr. Area 1: 915.0
 Noise: 0.7

Peak table for sample 7 : Sample 11 Soni 1:6

Peak	Size [bp]	Conc. [pg/μl]	Molarity [pmol/l]	Observations
1	35	125.00	5,411.3	Lower Marker
2	293	5.78	29.8	
3	311	5.88	28.7	
4	321	7.77	36.7	
5	341	6.77	30.1	
6	397	11.13	42.5	
7	441	24.37	83.8	
8	453	25.60	85.6	
9	528	16.41	47.1	
10	557	12.97	35.2	
11	582	32.90	85.7	
12	615	18.53	45.7	
13	658	17.45	40.2	
14	683	12.67	28.1	
15	701	17.44	37.7	
16	758	14.42	28.8	
17	917	155.22	256.5	
18	1,113	167.69	228.4	
19	1,634	38.00	35.2	
20	1,824	17.69	14.7	
21	2,511	8.60	5.2	
22	2,695	6.87	3.9	
23	2,964	11.29	5.8	
24	4,658	4.71	1.5	
25	5,205	5.04	1.5	
26	6,190	5.08	1.2	

Assay Class: High Sensitivity DNA Assay
 Data Path: C:\...ents and Settings\Bioanalyzer\2013-04-03\2013-04-03_005.xad


Created: 4/3/2013 4:05:07 PM
 Modified: 4/5/2013 9:22:44 AM

Electropherogram Summary Continued ...

... Peak table for sample 7 : Sample 11 Soni 1:6

Peak	Size [bp]	Conc. [pg/μl]	Molarity [pmol/l]	Observations
27	6,773	3.61	0.8	
28	8,007	2.95	0.6	
29	10,380	75.00	10.9	Upper Marker
30	13,915	0.00	0.0	

Region table for sample 7 : Sample 11 Soni 1:6

From [bp]	To [bp]	Average Size [bp]	Molarity [pmol/l]	Conc. [pg/μl]	Corr. Area	% of Total	Size distribution in CV [%]	Color
297	3,749	1,014	1,919.2	874.21	915.0	85	60.0	

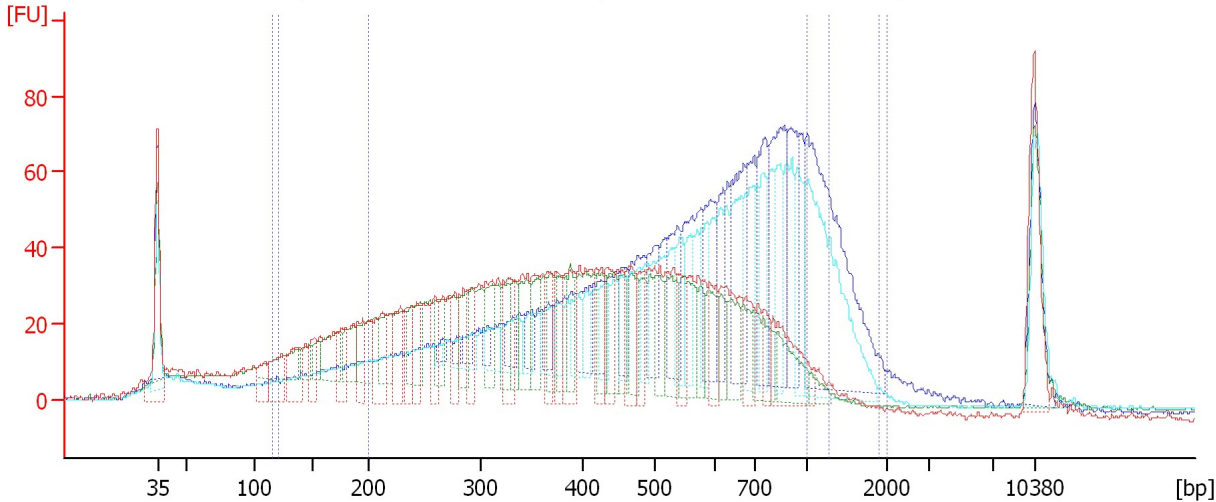
Assay Class: High Sensitivity DNA Assay
 Data Path: C:\...ents and Settings\Bioanalyzer\2013-04-03\2013-04-03_005.xad

Created: 4/3/2013 4:05:07 PM
 Modified: 4/5/2013 9:22:44 AM

Electropherogram Summary Continued ...

Covaris 300bp 50ul 1:5

● 8: Covaris 300bp 50... ● 9: Covaris 500bp 50ul 1:5 ● 10: Covaris 300bp 130... ● 11: Covaris 500bp 130...



Setpoint Deviations for sample 8 : Covaris 300bp 50ul 1:5

Height Threshold [FU] : 10

Overall Results for sample 8 : Covaris 300bp 50ul 1:5

Number of peaks found: 26 Corr. Area 1: 1,739.8
 Noise: 0.8

Peak table for sample 8 : Covaris 300bp 50ul 1:5

Peak	Size [bp]	Conc. [pg/μl]	Molarity [pmol/l]	Observations
1	35	125.00	5,411.3	Lower Marker
2	109	30.67	425.2	
3	124	52.82	647.3	
4	137	60.22	663.7	
5	152	36.52	364.5	
6	177	37.02	317.6	
7	194	43.93	342.8	
8	212	61.71	440.2	
9	228	51.42	341.6	
10	239	46.39	294.7	
11	243	38.37	239.5	
12	258	38.67	226.7	
13	276	38.61	211.8	
14	291	39.71	206.5	
15	326	60.24	279.9	
16	365	40.75	169.0	
17	374	39.82	161.5	
18	388	63.83	249.1	
19	426	48.74	173.3	
20	434	45.86	160.0	
21	465	47.65	155.4	
22	485	33.28	104.0	

Assay Class: High Sensitivity DNA Assay
 Data Path: C:\...ents and Settings\Bioanalyzer\2013-04-03\2013-04-03_005.xad


Created: 4/3/2013 4:05:07 PM
 Modified: 4/5/2013 9:22:44 AM

Electropherogram Summary Continued ...

... Peak table for sample 8 : Covaris 300bp 50ul 1:5

Peak	Size [bp]	Conc. [pg/μl]	Molarity [pmol/l]	Observations
23	541	36.95	103.6	
24	591	31.59	81.0	
25	677	32.61	73.0	
26	752	22.12	44.6	
27	803	73.25	138.3	
28	10,380	75.00	10.9	Upper Marker

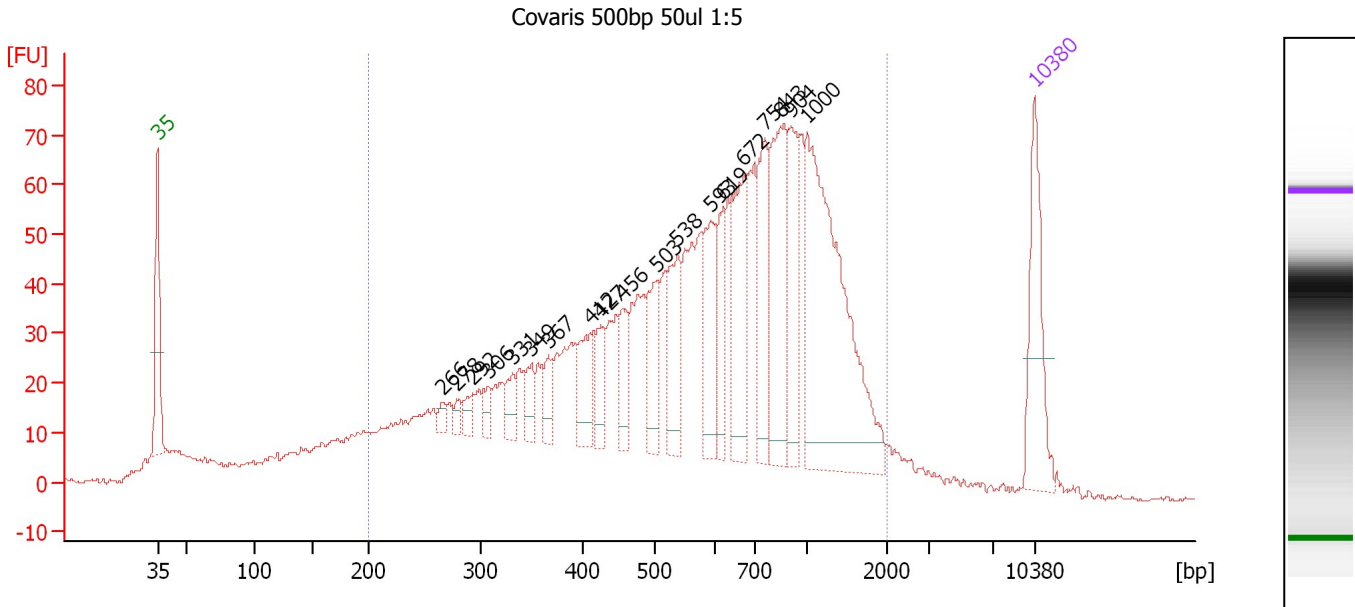
Region table for sample 8 : Covaris 300bp 50ul 1:5

From [bp]	To [bp]	Average Size [bp]	Molarity [pmol/l]	Conc. [pg/μl]	Corr. Area	% of Total	Size distribution in CV [%]	Color
116	1,257	424	11,861.3	2,325.71	1,739.8	89	47.4	

Assay Class: High Sensitivity DNA Assay
 Data Path: C:\...ents and Settings\Bioanalyzer\2013-04-03\2013-04-03_005.xad

Created: 4/3/2013 4:05:07 PM
 Modified: 4/5/2013 9:22:44 AM

Electropherogram Summary Continued ...



Overall Results for sample 9 : Covaris 500bp 50ul 1:5

Number of peaks found: 19 Corr. Area 1: 1,848.2
 Noise: 0.4

Peak table for sample 9 : Covaris 500bp 50ul 1:5

Peak	Size [bp]	Conc. [pg/μl]	Molarity [pmol/l]	Observations
1	35	125.00	5,411.3	Lower Marker
2	266	9.72	55.3	
3	278	9.88	53.9	
4	292	14.66	76.1	
5	306	14.80	73.2	
6	331	21.16	96.8	
7	349	26.92	116.7	
8	367	26.17	108.2	
9	412	52.39	192.7	
10	427	34.55	122.7	
11	456	34.83	115.7	
12	503	58.37	175.9	
13	538	72.44	204.0	
14	593	74.65	190.7	
15	619	43.98	107.7	
16	672	99.39	224.1	
17	754	84.39	169.6	
18	843	135.30	243.2	
19	904	74.62	125.0	
20	1,000	288.58	437.3	
21	10,380	75.00	10.9	Upper Marker

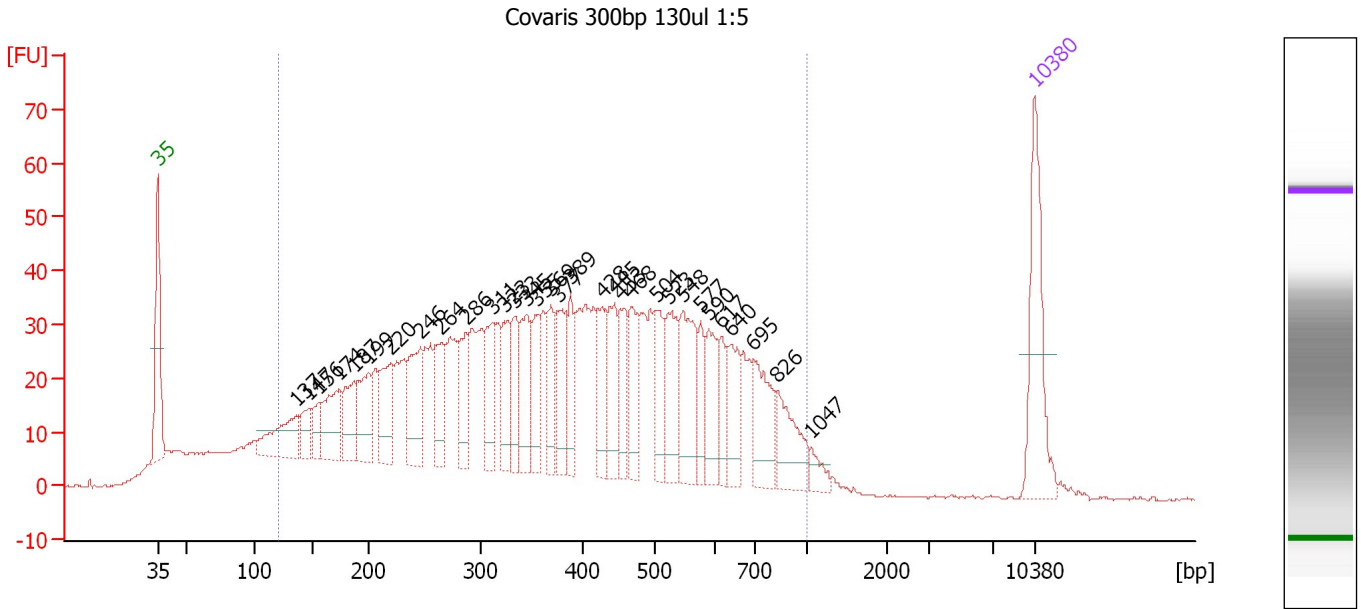
Region table for sample 9 : Covaris 500bp 50ul 1:5

From [bp]	To [bp]	Average Size [bp]	Molarity [pmol/l]	Conc. [pg/μl]	Corr. Area	% of Total	Size distribution in CV [%]	Color
200	1,990	690	7,628.4	2,423.60	1,848.2	87	52.7	Blue

Assay Class: High Sensitivity DNA Assay
 Data Path: C:\...ents and Settings\Bioanalyzer\2013-04-03\2013-04-03_005.xad

Created: 4/3/2013 4:05:07 PM
 Modified: 4/5/2013 9:22:44 AM

Electropherogram Summary Continued ...



Overall Results for sample 10 : Covaris 300bp 130ul 1:5

Number of peaks found: 32 Corr. Area 1: 1,561.8
 Noise: 0.2

Peak table for sample 10 : Covaris 300bp 130ul 1:5

Peak	Size [bp]	Conc. [pg/μl]	Molarity [pmol/l]	Observations
1	35	125.00	5,411.3	Lower Marker
2	137	68.10	755.4	
3	147	29.76	306.8	
4	156	25.91	251.8	
5	174	59.81	520.2	
6	187	52.49	424.6	
7	199	56.42	428.8	
8	220	58.53	404.0	
9	246	68.48	421.7	
10	264	51.83	297.4	
11	286	49.55	262.2	
12	311	48.31	235.5	
13	323	42.42	199.1	
14	333	39.47	179.6	
15	345	56.33	247.5	
16	355	41.30	176.3	
17	369	42.02	172.5	
18	377	52.76	212.1	
19	389	41.05	159.9	
20	428	47.74	168.9	
21	445	52.96	180.4	
22	453	41.34	138.2	
23	468	43.67	141.3	
24	504	47.32	142.1	
25	523	58.11	168.3	
26	548	73.98	204.6	

Assay Class: High Sensitivity DNA Assay
 Data Path: C:\...ents and Settings\Bioanalyzer\2013-04-03\2013-04-03_005.xad


Created: 4/3/2013 4:05:07 PM
 Modified: 4/5/2013 9:22:44 AM

Electropherogram Summary Continued ...

... Peak table for sample 10 : Covaris 300bp 130ul 1:5

Peak	Size [bp]	Conc. [pg/ μ l]	Molarity [pmol/l]	Observations
27	577	28.15	74.0	
28	590	45.13	115.8	
29	617	25.31	62.2	
30	640	44.94	106.3	
31	695	56.90	124.0	
32	826	49.68	91.1	
33	1,047	12.13	17.5	
34	▶ 10,380	75.00	10.9	Upper Marker

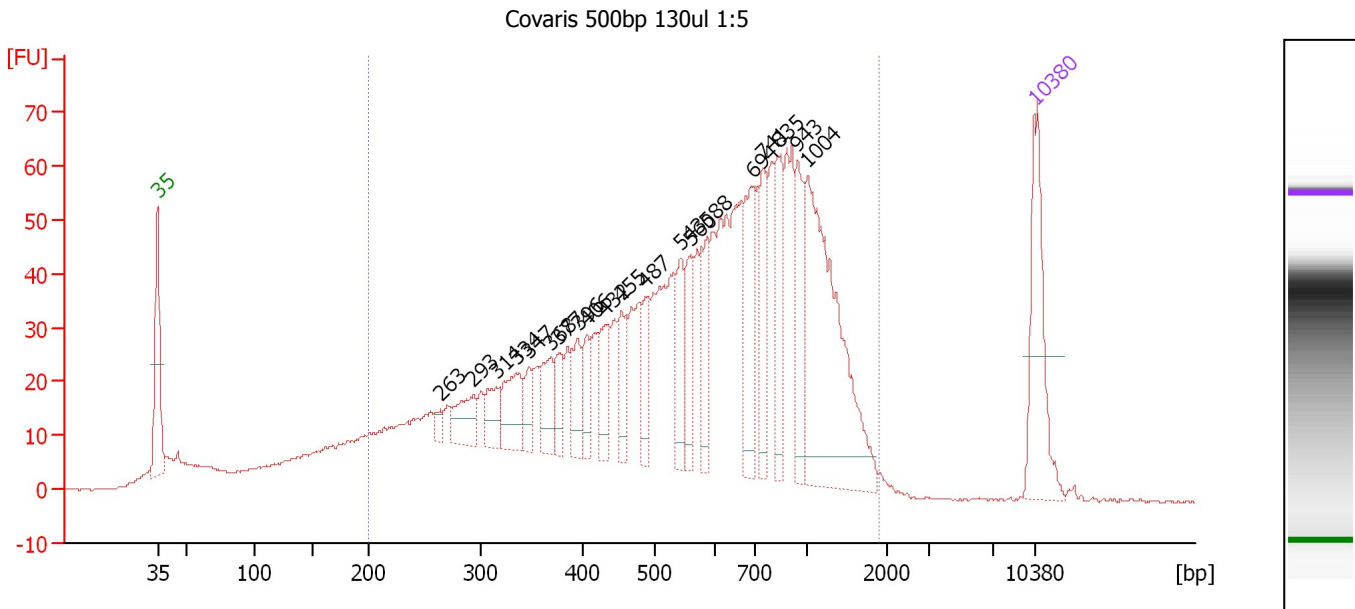
Region table for sample 10 : Covaris 300bp 130ul 1:5

From [bp]	To [bp]	Average Size [bp]	Molarity [pmol/l]	Conc. [pg/ μ l]	Corr. Area	% of Total	Size distribution in CV [%]	Color
121	1,000	408	12,546.0	2,450.45	1,561.8	90	43.8	

Assay Class: High Sensitivity DNA Assay
 Data Path: C:\...ents and Settings\Bioanalyzer\2013-04-03\2013-04-03_005.xad

Created: 4/3/2013 4:05:07 PM
 Modified: 4/5/2013 9:22:44 AM

Electropherogram Summary Continued ...



Overall Results for sample 11 : Covaris 500bp 130ul 1:5

Number of peaks found: 20 Corr. Area 1: 1,617.7
 Noise: 0.1

Peak table for sample 11 : Covaris 500bp 130ul 1:5

Peak	Size [bp]	Conc. [pg/μl]	Molarity [pmol/l]	Observations
1	35	125.00	5,411.3	Lower Marker
2	263	10.03	57.7	
3	293	39.10	202.2	
4	314	30.48	146.9	
5	334	50.35	228.3	
6	347	22.36	97.7	
7	368	37.55	154.4	
8	377	27.77	111.6	
9	396	31.62	120.9	
10	406	25.22	94.0	
11	432	40.60	142.3	
12	455	34.74	115.7	
13	487	33.33	103.6	
14	543	49.13	137.1	
15	560	41.09	111.2	
16	588	39.46	101.7	
17	694	78.58	171.6	
18	741	58.54	119.7	
19	835	54.79	99.4	
20	943	49.81	80.1	
21	1,004	217.56	328.5	
22	10,380	75.00	10.9	Upper Marker

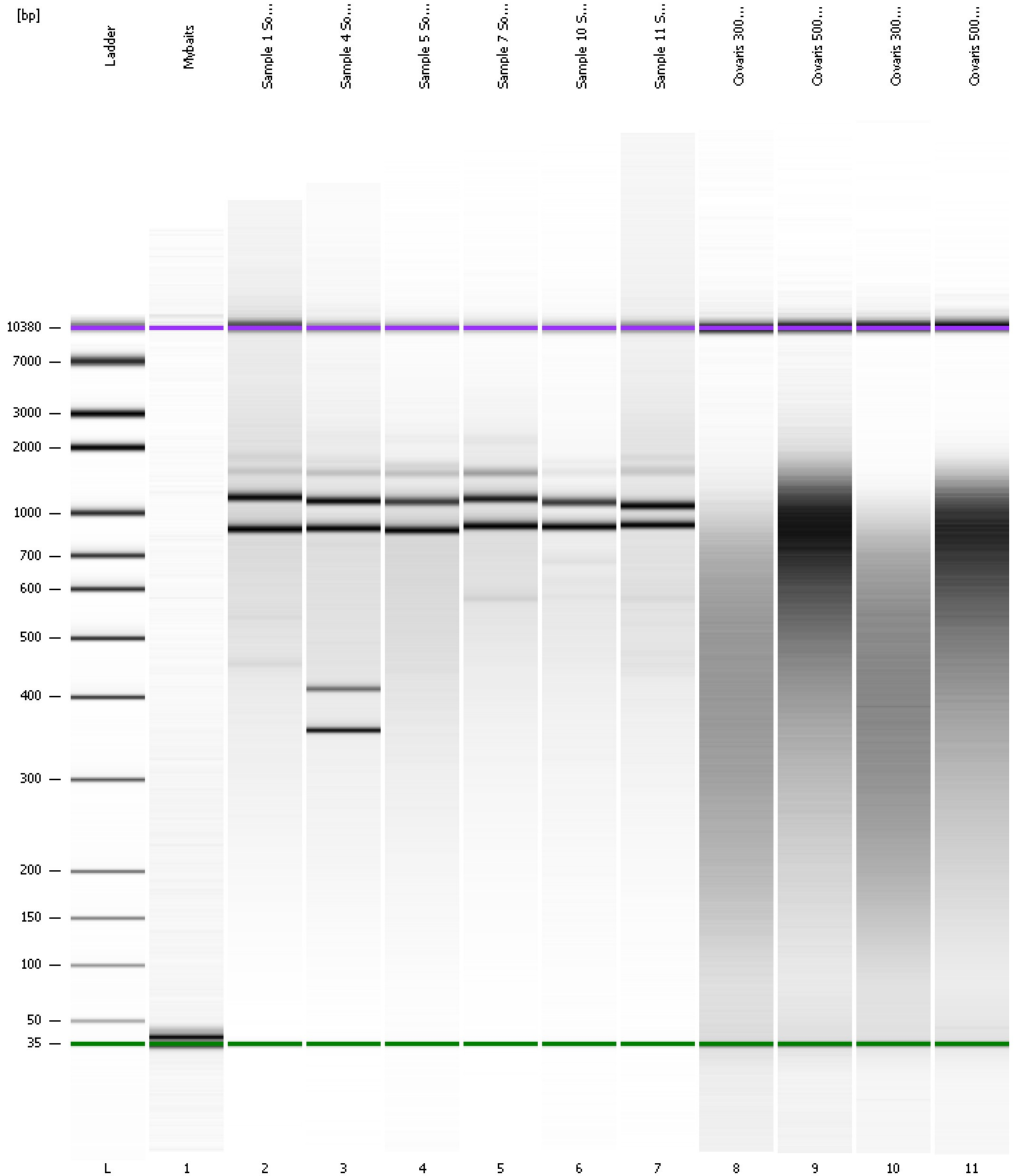
Region table for sample 11 : Covaris 500bp 130ul 1:5

From [bp]	To [bp]	Average Size [bp]	Molarity [pmol/l]	Conc. [pg/μl]	Corr. Area	% of Total	Size distribution in CV [%]	Color
200	1,903	650	7,099.2	2,179.36	1,617.7	88	50.5	Blue

Assay Class: High Sensitivity DNA Assay
Data Path: C:\...ents and Settings\Bioanalyzer\2013-04-03\2013-04-03_005.xad

Created: 4/3/2013 4:05:07 PM
Modified: 4/5/2013 9:22:44 AM

Gel Image

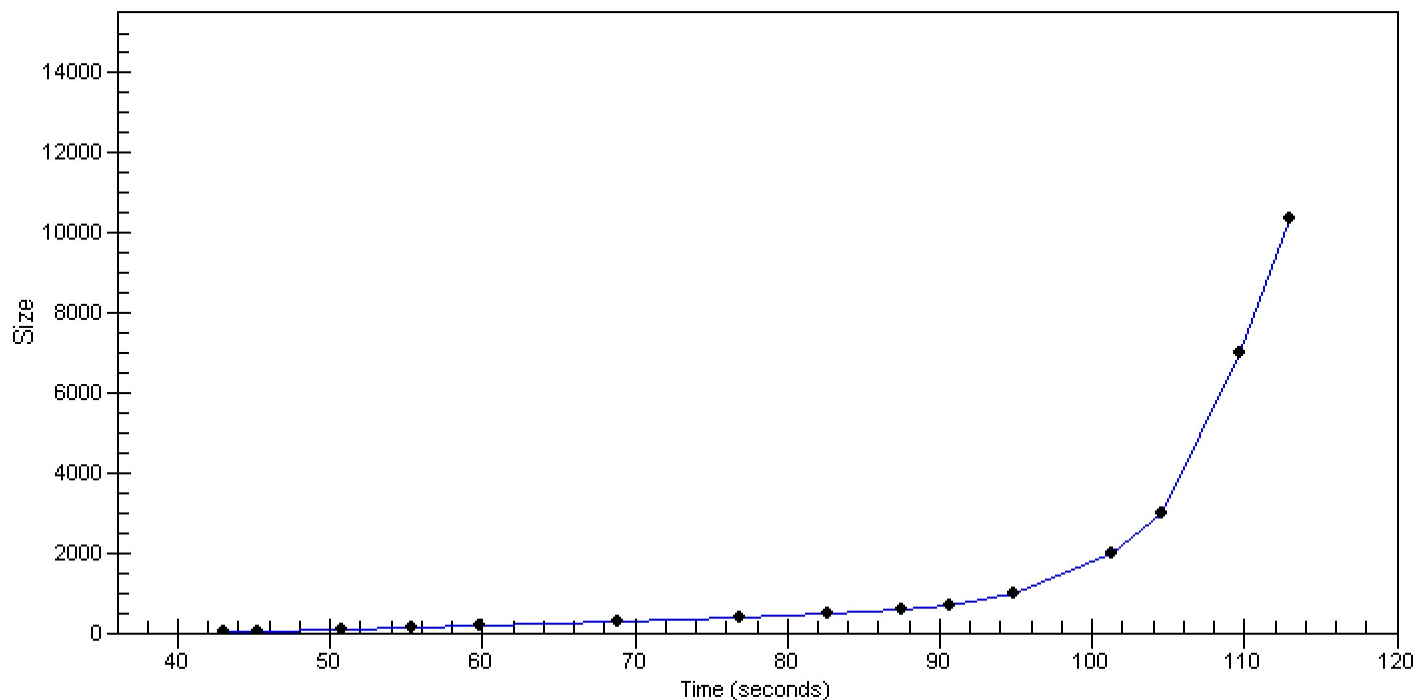


Assay Class: High Sensitivity DNA Assay
Data Path: C:\...ents and Settings\Bioanalyzer\2013-04-03\2013-04-03_005.xad

Created: 4/3/2013 4:05:07 PM
Modified: 4/5/2013 9:22:44 AM

Curves

Standard Curve



Assay Class: High Sensitivity DNA Assay
 Data Path: C:\...ents and Settings\Bioanalyzer\2013-04-03\2013-04-03_005.xad

Created: 4/3/2013 4:05:07 PM
 Modified: 4/5/2013 9:22:44 AM

Run Logbook

Description	Number	Source	Category	Sub Category	Time	Time Zone	User	Host
Run ended on port 1 (Number of wells acquired: 12)		Instrument	Run		4/3/2013 4:46:17 PM	(GMT --07:00) Pacific Standard Time	UC Davis	D8XSMGH1
Run started on port 1 (File: C:\Documents and Settings\Bioanalyzer\2013-04-03\2013-04-03_005.xad)		Instrument	Run		4/3/2013 4:05:07 PM	(GMT --07:00) Pacific Standard Time	UC Davis	D8XSMGH1
Product Number : G2938B		Instrument	Run		4/3/2013 4:05:07 PM	(GMT --07:00) Pacific Standard Time	UC Davis	D8XSMGH1
Name :		Instrument	Run		4/3/2013 4:05:07 PM	(GMT --07:00) Pacific Standard Time	UC Davis	D8XSMGH1
Vendor : Agilent Technologies		Instrument	Run		4/3/2013 4:05:07 PM	(GMT --07:00) Pacific Standard Time	UC Davis	D8XSMGH1
Serial# : DE13701086		Instrument	Run		4/3/2013 4:05:07 PM	(GMT --07:00) Pacific Standard Time	UC Davis	D8XSMGH1
Firmware : C.01.069		Instrument	Run		4/3/2013 4:05:07 PM	(GMT --07:00) Pacific Standard Time	UC Davis	D8XSMGH1
Cartridge : Electrode		Instrument	Run		4/3/2013 4:05:07 PM	(GMT --07:00) Pacific Standard Time	UC Davis	D8XSMGH1