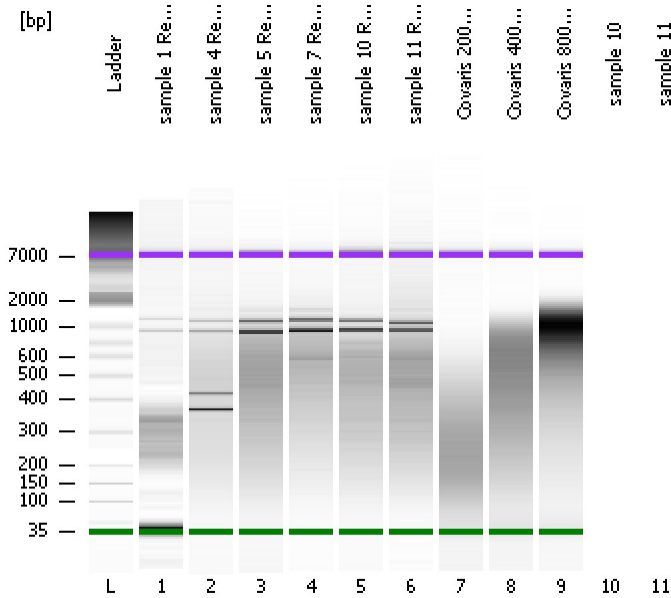


Assay Class: High Sensitivity DNA Assay
Data Path: C:\...ents and Settings\Bioanalyzer\2013-04-05\2013-04-05_001.xad

Created: 4/5/2013 12:44:44 PM
Modified: 4/5/2013 1:45:59 PM

Electrophoresis File Run Summary



Instrument Information:

Instrument Name: DE13701086 Firmware: C.01.069
Serial#: DE13701086 Type: G2938B

Assay Information:

Assay Origin Path: C:\Program Files\Agilent\2100 bioanalyzer\2100 expert\assays\dsDNA\High Sensitivity DNA.xsy
Assay Class: High Sensitivity DNA Assay
Version: 1.03
Assay Comments: Copyright © 2003-2010 Agilent Technologies

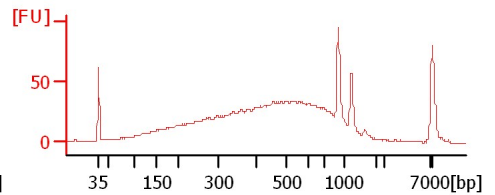
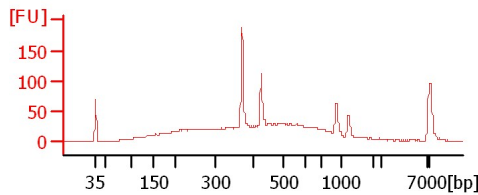
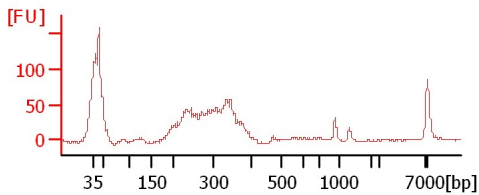
Chip Information:

Chip Lot #:
Reagent Kit Lot #:
Chip Comments:

sample 1 Resoni 1:6

sample 4 Resoni 1:6

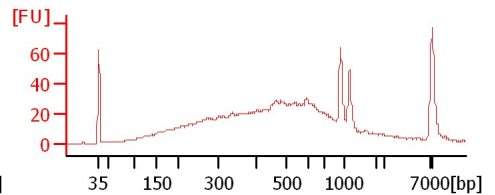
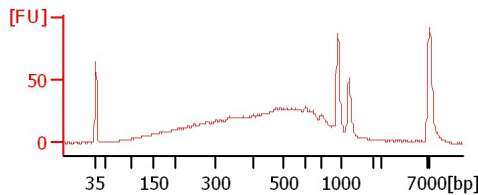
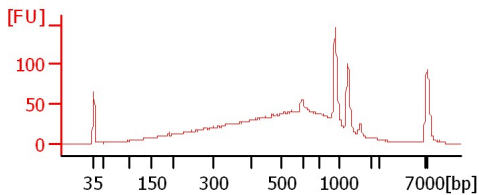
sample 5 Resoni 1:6



sample 7 Resoni 1:6

sample 10 Resoni 1:6

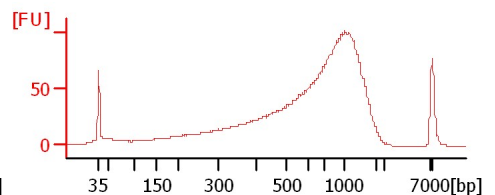
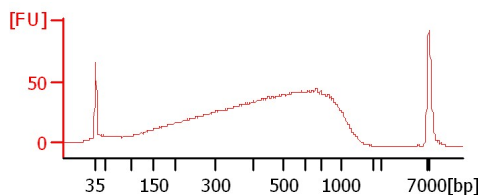
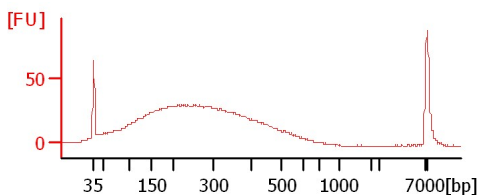
sample 11 Resoni 1:6



Covaris 200bp 130ul

Covaris 400bp 130ul

Covaris 800bp 130ul



Assay Class: High Sensitivity DNA Assay
Data Path: C:\...ents and Settings\Bioanalyzer\2013-04-05\2013-04-05_001.xad

Created: 4/5/2013 12:44:44 PM
Modified: 4/5/2013 1:45:59 PM

Electrophoresis File Run Summary (Chip Summary)

Sample Name	Sample Comment	Rest. Digest	Status	Observation	Result Label	Result Color
sample 1 Resoni 1:6		<input type="checkbox"/>	✓			
sample 4 Resoni 1:6		<input type="checkbox"/>	✓			
sample 5 Resoni 1:6		<input type="checkbox"/>	✓			
sample 7 Resoni 1:6		<input type="checkbox"/>	✓			
sample 10 Resoni 1:6		<input type="checkbox"/>	✓			
sample 11 Resoni 1:6		<input type="checkbox"/>	✓			
Covaris 200bp 130ul		<input type="checkbox"/>	✓			
Covaris 400bp 130ul		<input type="checkbox"/>	✓			
Covaris 800bp 130ul		<input type="checkbox"/>	✓			
sample 10		<input type="checkbox"/>				
sample 11		<input type="checkbox"/>				
Ladder		<input type="checkbox"/>	✓			

Chip Lot #

Reagent Kit Lot #

Chip Comments :

Assay Class: High Sensitivity DNA Assay
Data Path: C:\...ents and Settings\Bioanalyzer\2013-04-05\2013-04-05_001.xad

Created: 4/5/2013 12:44:44 PM
Modified: 4/5/2013 1:45:59 PM

Electrophoresis Assay Details

General Analysis Settings

Number of Available Sample and Ladder Wells (Max.) : 12
Minimum Visible Range [s] : 32
Maximum Visible Range [s] : 138
Start Analysis Time Range [s] : 33
End Analysis Time Range [s] : 137.5
Ladder Concentration [pg/μl] : 1950
Uses Standard Area for Ladder Fragments
Lower Marker Concentration [pg/μl] : 125
Upper Marker Concentration [pg/μl] : 75
Used Upper Marker for Quantitation
Standard Curve Fit is Point to Point
Show Data Aligned to Lower and Upper Marker

Integrator Settings

Integration Start Time [s] : 33.05
Integration End Time [s] : 137
Slope Threshold : 0.8
Height Threshold [FU] : 5
Area Threshold : 0.1
Width Threshold [s] : 0.6
Baseline Plateau [s] : 0.5

Filter Settings

Filter Width [s] : 0.5
Polynomial Order : 4

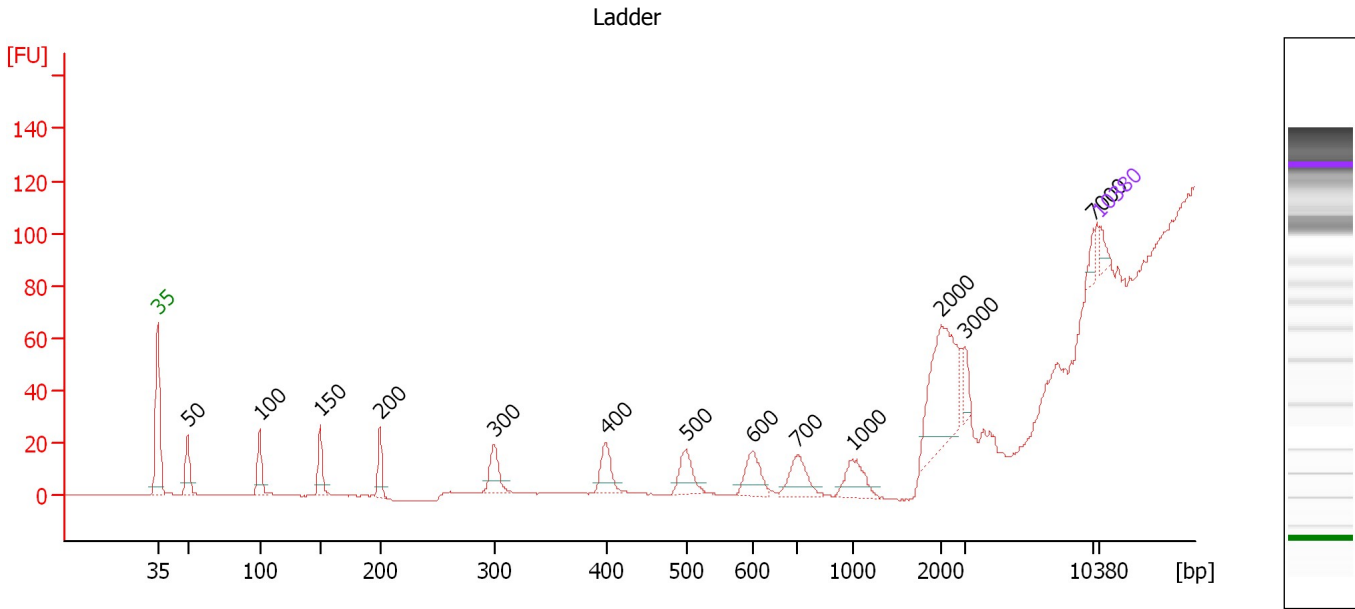
Ladder

Ladder Peak	Size	Area
1	35	160
2	50	210
3	100	208
4	150	221
5	200	242
6	300	270
7	400	305
8	500	306
9	600	336
10	700	321
11	1000	366
12	2000	413
13	3000	411
14	7000	400
15	10380	214

Assay Class: High Sensitivity DNA Assay
 Data Path: C:\...ents and Settings\Bioanalyzer\2013-04-05\2013-04-05_001.xad

Created: 4/5/2013 12:44:44 PM
 Modified: 4/5/2013 1:45:59 PM

Electropherogram Summary



Overall Results for Ladder

Noise: 0.2

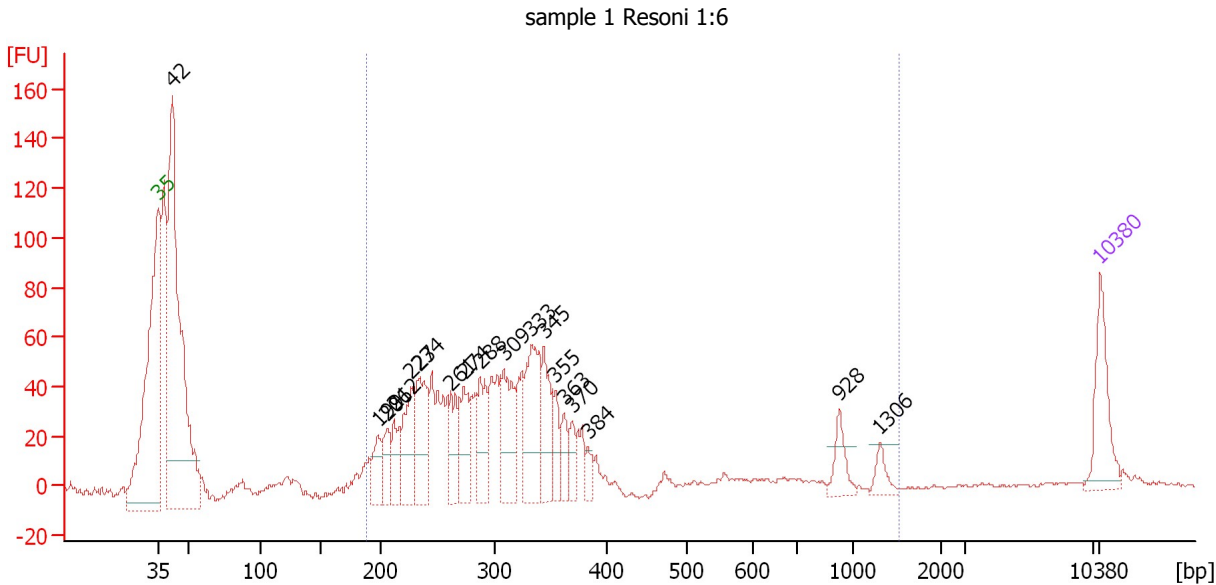
Peak table for Ladder

Peak	Size [bp]	Conc. [pg/μl]	Molarity [pmol/l]	Observations
1	35	125.00	5,411.3	Lower Marker
2	50	150.00	4,545.5	Ladder Peak
3	100	150.00	2,272.7	Ladder Peak
4	150	150.00	1,515.2	Ladder Peak
5	200	150.00	1,136.4	Ladder Peak
6	300	150.00	757.6	Ladder Peak
7	400	150.00	568.2	Ladder Peak
8	500	150.00	454.5	Ladder Peak
9	600	150.00	378.8	Ladder Peak
10	700	150.00	324.7	Ladder Peak
11	1,000	150.00	227.3	Ladder Peak
12	2,000	150.00	113.6	Ladder Peak
13	3,000	150.00	75.8	Ladder Peak
14	7,000	150.00	32.5	Ladder Peak
15	10,380	75.00	10.9	Upper Marker

Assay Class: High Sensitivity DNA Assay
 Data Path: C:\...ents and Settings\Bioanalyzer\2013-04-05\2013-04-05_001.xad

Created: 4/5/2013 12:44:44 PM
 Modified: 4/5/2013 1:45:59 PM

Electropherogram Summary Continued ...



Setpoint Deviations for sample 1 : sample 1 Resoni 1:6

Height Threshold [FU] : 20

Overall Results for sample 1 : sample 1 Resoni 1:6

Number of peaks found: 18 Corr. Area 1: 996.9
 Noise: 0.7

Peak table for sample 1 : sample 1 Resoni 1:6

Peak	Size [bp]	Conc. [pg/μl]	Molarity [pmol/l]	Observations
1	35	125.00	5,411.3	Lower Marker
2	42	848.98	30,359.3	
3	199	61.57	469.6	
4	206	50.46	370.5	
5	212	56.54	403.9	
6	227	119.77	799.0	
7	234	130.68	846.7	
8	261	85.05	493.1	
9	274	96.29	532.9	
10	288	95.45	501.6	
11	309	123.42	605.7	
12	333	164.30	748.5	
13	345	92.55	406.8	
14	355	43.62	186.3	
15	363	35.42	147.9	
16	370	34.37	140.9	
17	384	20.56	81.2	
18	928	37.63	61.4	
19	1,306	21.23	24.6	
20	10,380	75.00	10.9	Upper Marker

Assay Class: High Sensitivity DNA Assay
Data Path: C:\...ents and Settings\Bioanalyzer\2013-04-05\2013-04-05_001.xad

Created: 4/5/2013 12:44:44 PM
Modified: 4/5/2013 1:45:59 PM

Electropherogram Summary Continued ...

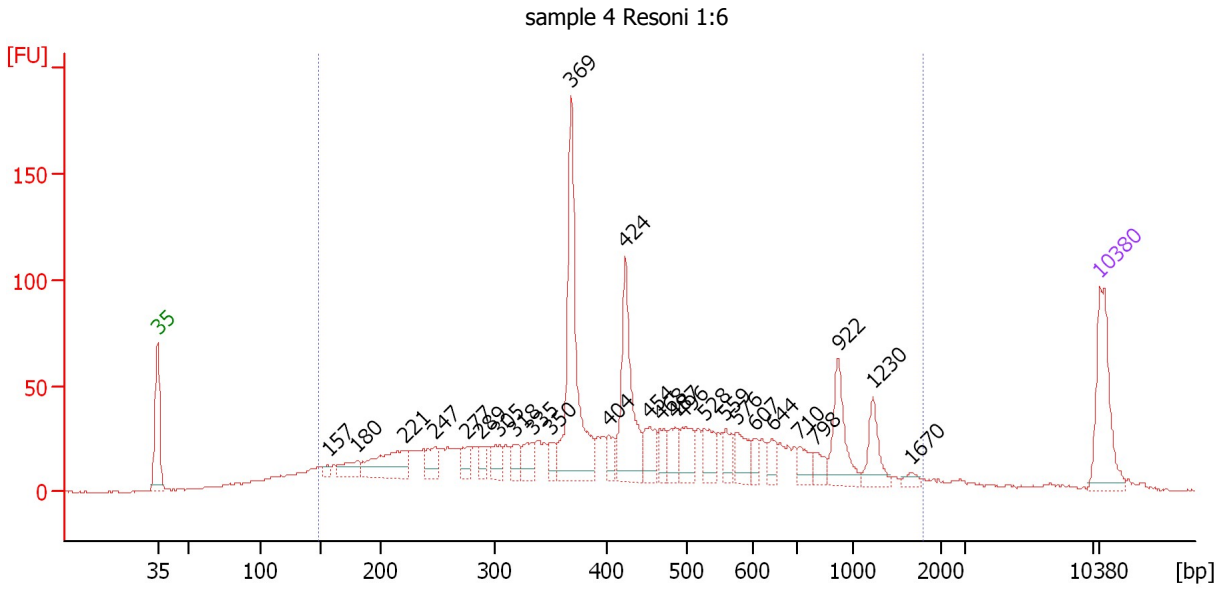
... Region table for sample 1 : sample 1 Resoni 1:6

From [bp]	To [bp]	Average Size [bp]	Molarity [pmol/l]	Conc. [pg/μl]	Corr. Area	% of Total	Size distribution in CV [%]	Color
189	1,531	343	7,302.0	1,398.43	996.9	63	55.3	■

Assay Class: High Sensitivity DNA Assay
 Data Path: C:\...ents and Settings\Bioanalyzer\2013-04-05\2013-04-05_001.xad

Created: 4/5/2013 12:44:44 PM
 Modified: 4/5/2013 1:45:59 PM

Electropherogram Summary Continued ...



Overall Results for sample 2 : sample 4 Resoni 1:6

Number of peaks found: 27 Corr. Area 1: 1,540.4
 Noise: 0.4

Peak table for sample 2 : sample 4 Resoni 1:6

Peak	Size [bp]	Conc. [pg/μl]	Molarity [pmol/l]	Observations
1	35	125.00	5,411.3	Lower Marker
2	157	8.32	80.5	
3	180	27.52	231.7	
4	221	85.85	589.2	
5	247	29.74	182.2	
6	277	22.63	124.0	
7	289	19.11	100.4	
8	305	26.75	132.9	
9	318	21.39	102.0	
10	335	28.39	128.5	
11	350	17.44	75.4	
12	369	229.60	942.7	
13	404	18.39	69.0	
14	424	131.15	468.7	
15	454	38.23	127.6	
16	468	25.03	81.0	
17	487	28.54	88.9	
18	496	39.48	120.6	
19	528	33.54	96.3	
20	559	23.00	62.3	
21	576	31.86	83.8	
22	607	14.50	36.2	
23	644	19.44	45.7	
24	710	20.93	44.7	
25	798	16.61	31.5	
26	922	60.57	99.5	

Assay Class: High Sensitivity DNA Assay
 Data Path: C:\...ents and Settings\Bioanalyzer\2013-04-05\2013-04-05_001.xad


Created: 4/5/2013 12:44:44 PM
 Modified: 4/5/2013 1:45:59 PM

Electropherogram Summary Continued ...

... Peak table for sample 2 : sample 4 Resoni 1:6

Peak	Size [bp]	Conc. [pg/μl]	Molarity [pmol/l]	Observations
27	1,230	35.29	43.5	
28	1,670	6.82	6.2	
29	10,380	75.00	10.9	Upper Marker

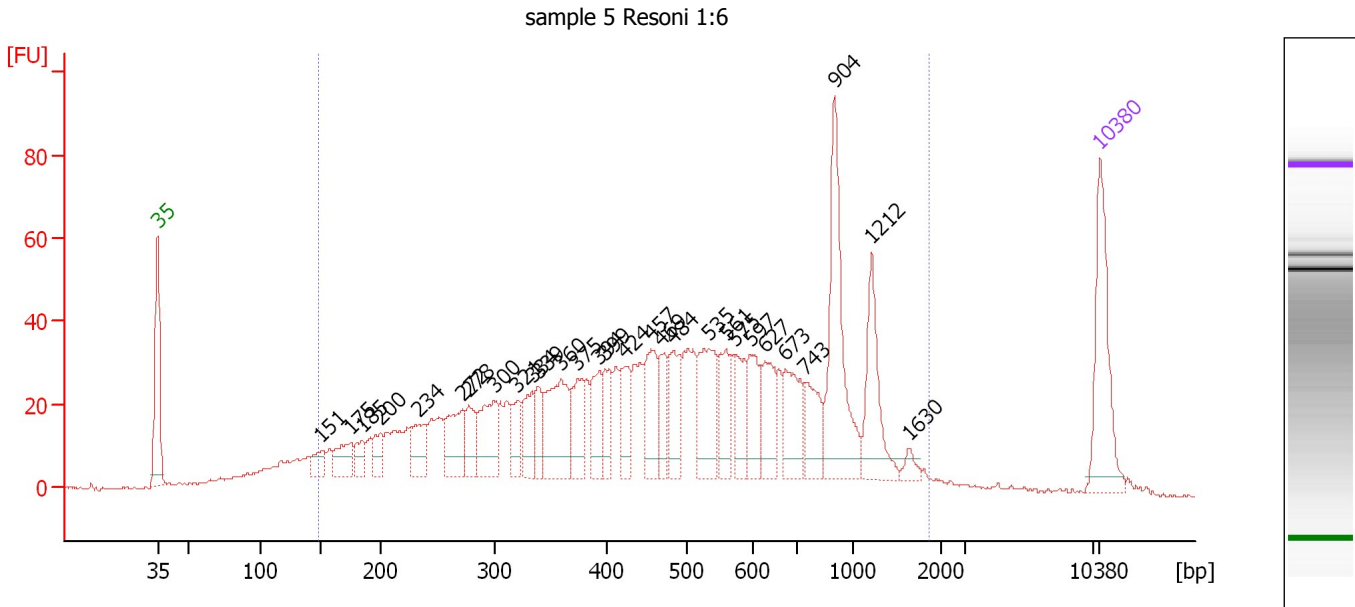
Region table for sample 2 : sample 4 Resoni 1:6

From [bp]	To [bp]	Average Size [bp]	Molarity [pmol/l]	Conc. [pg/μl]	Corr. Area	% of Total	Size distribution in CV [%]	Color
149	1,796	499	7,454.3	1,716.65	1,540.4	90	56.8	

Assay Class: High Sensitivity DNA Assay
 Data Path: C:\...ents and Settings\Bioanalyzer\2013-04-05\2013-04-05_001.xad

Created: 4/5/2013 12:44:44 PM
 Modified: 4/5/2013 1:45:59 PM

Electropherogram Summary Continued ...



Overall Results for sample 3 : sample 5 Resoni 1:6

Number of peaks found: 29 Corr. Area 1: 1,467.4
 Noise: 0.4

Peak table for sample 3 : sample 5 Resoni 1:6

Peak	Size [bp]	Conc. [pg/μl]	Molarity [pmol/l]	Observations
1	35	125.00	5,411.3	Lower Marker
2	151	21.17	212.5	
3	175	35.34	305.8	
4	185	20.29	166.1	
5	200	24.53	185.5	
6	234	37.93	245.6	
7	272	57.70	320.8	
8	278	32.00	174.4	
9	300	63.07	318.5	
10	321	26.07	123.1	
11	334	39.07	177.1	
12	339	28.98	129.4	
13	360	85.53	359.9	
14	375	45.25	183.0	
15	394	40.58	156.1	
16	399	33.03	125.3	
17	424	37.74	134.8	
18	457	53.36	177.1	
19	469	35.76	115.5	
20	484	49.94	156.3	
21	535	70.38	199.1	
22	561	40.91	110.5	
23	575	38.58	101.6	
24	597	43.01	109.2	
25	627	46.05	111.3	
26	673	55.39	124.7	

Assay Class: High Sensitivity DNA Assay
 Data Path: C:\...ents and Settings\Bioanalyzer\2013-04-05\2013-04-05_001.xad


Created: 4/5/2013 12:44:44 PM
 Modified: 4/5/2013 1:45:59 PM

Electropherogram Summary Continued ...

... Peak table for sample 3 : sample 5 Resoni 1:6

Peak	Size [bp]	Conc. [pg/µl]	Molarity [pmol/l]	Observations
27	743	42.26	86.2	
28	904	130.15	218.2	
29	1,212	63.85	79.8	
30	1,630	7.77	7.2	
31	10,380	75.00	10.9	Upper Marker

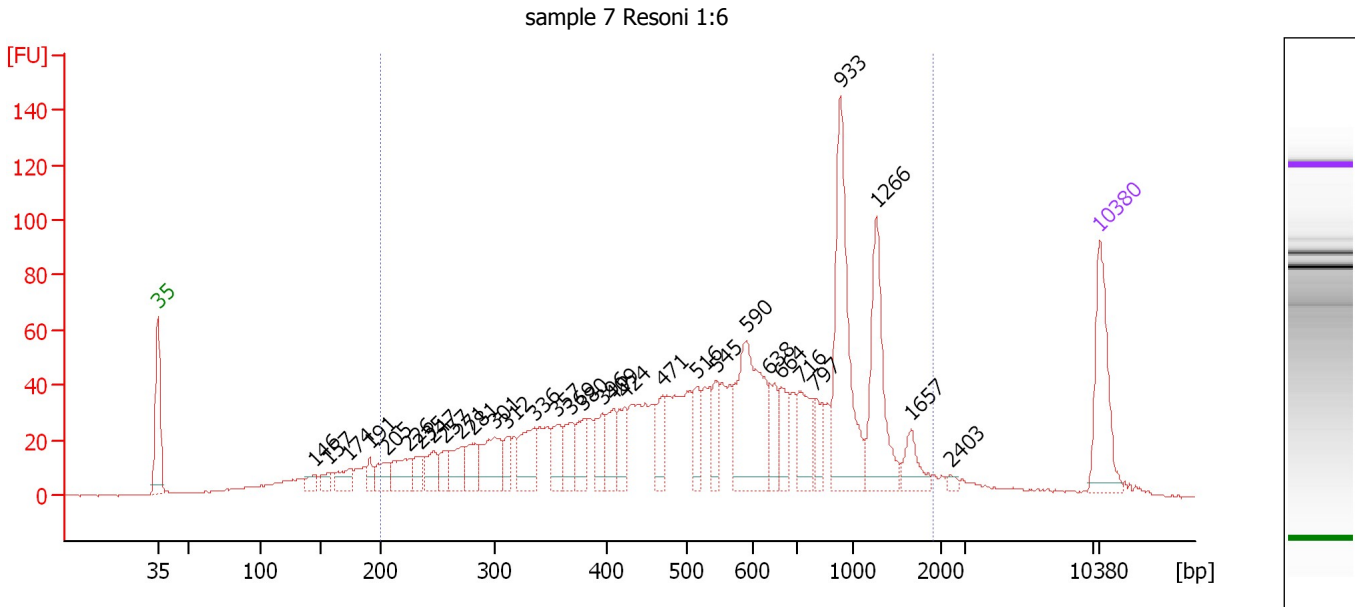
Region table for sample 3 : sample 5 Resoni 1:6

From [bp]	To [bp]	Average Size [bp]	Molarity [pmol/l]	Conc. [pg/µl]	Corr. Area	% of Total	Size distribution in CV [%]	Color
148	1,860	555	8,132.0	2,006.06	1,467.4	92	55.3	

Assay Class: High Sensitivity DNA Assay
 Data Path: C:\...ents and Settings\Bioanalyzer\2013-04-05\2013-04-05_001.xad

Created: 4/5/2013 12:44:44 PM
 Modified: 4/5/2013 1:45:59 PM

Electropherogram Summary Continued ...



Overall Results for sample 4 : sample 7 Resoni 1:6

Number of peaks found: 32 Corr. Area 1: 1,631.9
 Noise: 0.3

Peak table for sample 4 : sample 7 Resoni 1:6

Peak	Size [bp]	Conc. [pg/μl]	Molarity [pmol/l]	Observations
1	35	125.00	5,411.3	Lower Marker
2	146	13.04	135.5	
3	157	15.09	145.6	
4	174	28.22	245.4	
5	191	15.97	126.4	
6	205	28.59	211.2	
7	226	41.89	281.0	
8	235	19.17	123.4	
9	247	31.08	190.9	
10	257	21.18	125.0	
11	271	36.33	202.8	
12	281	35.86	193.0	
13	301	61.73	310.5	
14	312	23.75	115.5	
15	336	57.10	257.8	
16	357	34.14	145.0	
17	369	40.23	165.2	
18	380	34.92	139.3	
19	396	33.60	128.4	
20	409	39.58	146.5	
21	424	35.89	128.3	
22	471	33.85	108.9	
23	516	35.97	105.5	
24	545	36.09	100.3	
25	590	154.99	397.7	
26	638	35.24	83.6	

Assay Class: High Sensitivity DNA Assay
 Data Path: C:\...ents and Settings\Bioanalyzer\2013-04-05\2013-04-05_001.xad


Created: 4/5/2013 12:44:44 PM
 Modified: 4/5/2013 1:45:59 PM

Electropherogram Summary Continued ...

... Peak table for sample 4 : sample 7 Resoni 1:6

Peak	Size [bp]	Conc. [pg/µl]	Molarity [pmol/l]	Observations
27	664	33.72	77.0	
28	716	57.22	121.1	
29	797	28.14	53.5	
30	933	177.49	288.3	
31	1,266	107.66	128.8	
32	1,657	25.85	23.6	
33	2,403	4.28	2.7	
34	▶ 10,380	75.00	10.9	Upper Marker

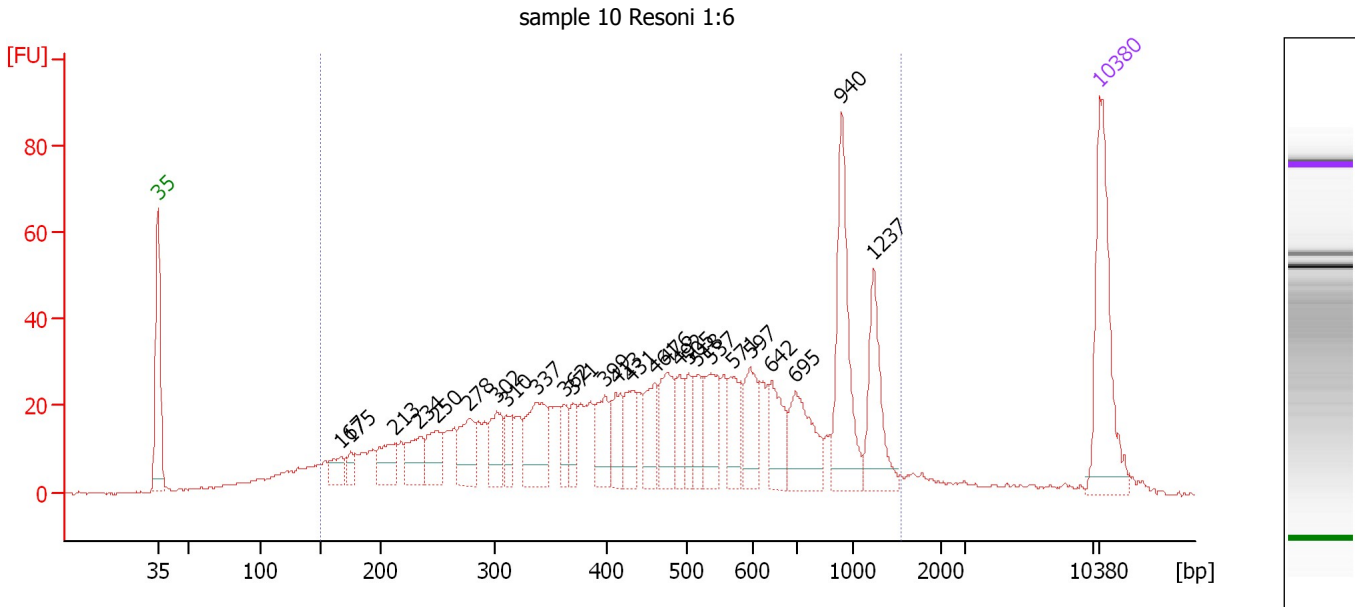
Region table for sample 4 : sample 7 Resoni 1:6

From [bp]	To [bp]	Average Size [bp]	Molarity [pmol/l]	Conc. [pg/µl]	Corr. Area	% of Total	Size distribution in CV [%]	Color
200	1,906	645	6,416.7	1,915.98	1,631.9	88	53.4	

Assay Class: High Sensitivity DNA Assay
 Data Path: C:\...ents and Settings\Bioanalyzer\2013-04-05\2013-04-05_001.xad

Created: 4/5/2013 12:44:44 PM
 Modified: 4/5/2013 1:45:59 PM

Electropherogram Summary Continued ...



Overall Results for sample 5 : sample 10 Resoni 1:6

Number of peaks found: 26 Corr. Area 1: 1,154.7
 Noise: 0.3

Peak table for sample 5 : sample 10 Resoni 1:6

Peak	Size [bp]	Conc. [pg/μl]	Molarity [pmol/l]	Observations
1	35	125.00	5,411.3	Lower Marker
2	167	18.35	166.3	
3	175	10.75	92.9	
4	213	32.39	230.9	
5	234	31.34	202.7	
6	250	32.35	195.8	
7	278	37.71	205.7	
8	302	32.40	162.4	
9	310	18.05	88.1	
10	337	56.86	255.4	
11	362	18.49	77.3	
12	371	18.37	75.0	
13	399	33.32	126.5	
14	413	26.13	95.9	
15	431	29.85	104.8	
16	461	33.65	110.6	
17	476	40.15	127.7	
18	492	21.54	66.3	
19	505	23.10	69.3	
20	518	22.71	66.5	
21	537	39.53	111.5	
22	571	30.65	81.4	
23	597	38.87	98.7	
24	642	35.83	84.6	
25	695	51.78	112.9	
26	940	83.37	134.3	


Assay Class: High Sensitivity DNA Assay
Data Path: C:\...ents and Settings\Bioanalyzer\2013-04-05\2013-04-05_001.xad

Created: 4/5/2013 12:44:44 PM
Modified: 4/5/2013 1:45:59 PM

Electropherogram Summary Continued ...**... Peak table for sample 5 : sample 10 Resoni 1:6**

Peak	Size [bp]	Conc. [pg/ μ l]	Molarity [pmol/l]	Observations
27	1,237	48.33	59.2	
28	10,380	75.00	10.9	Upper Marker

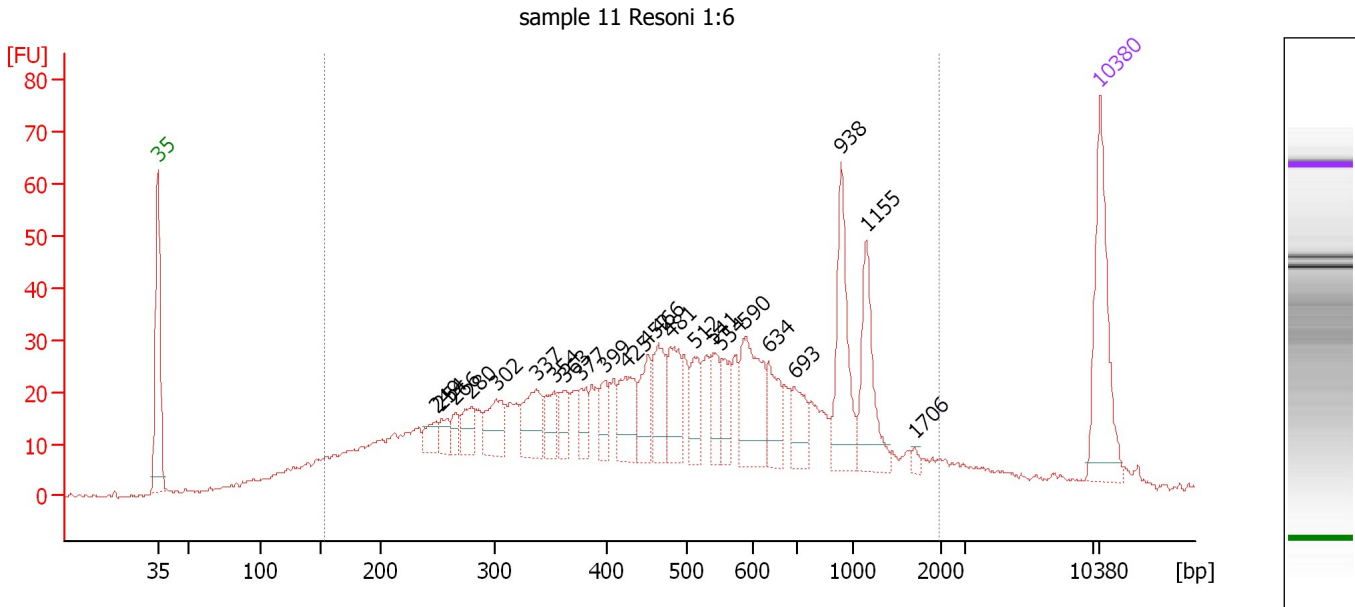
Region table for sample 5 : sample 10 Resoni 1:6

From [bp]	To [bp]	Average Size [bp]	Molarity [pmol/l]	Conc. [pg/ μ l]	Corr. Area	% of Total	Size distribution in CV [%]	Color
151	1,538	546	5,099.0	1,255.60	1,154.7	90	52.6	

Assay Class: High Sensitivity DNA Assay
 Data Path: C:\...ents and Settings\Bioanalyzer\2013-04-05\2013-04-05_001.xad

Created: 4/5/2013 12:44:44 PM
 Modified: 4/5/2013 1:45:59 PM

Electropherogram Summary Continued ...



Overall Results for sample 6 : sample 11 Resoni 1:6

Number of peaks found: 23 Corr. Area 1: 1,157.3
 Noise: 0.5

Peak table for sample 6 : sample 11 Resoni 1:6

Peak	Size [bp]	Conc. [pg/μl]	Molarity [pmol/l]	Observations
1	35	125.00	5,411.3	Lower Marker
2	249	17.34	105.5	
3	254	16.09	96.1	
4	266	13.91	79.3	
5	280	24.71	133.8	
6	302	39.62	198.5	
7	337	45.93	206.3	
8	354	23.90	102.4	
9	363	23.29	97.3	
10	377	20.74	83.4	
11	399	24.28	92.2	
12	425	43.71	155.7	
13	452	33.70	113.0	
14	466	43.84	142.6	
15	481	45.32	142.6	
16	512	31.69	93.7	
17	541	30.01	84.0	
18	554	23.39	64.0	
19	590	71.60	184.0	
20	634	34.29	81.9	
21	693	28.13	61.5	
22	938	78.21	126.3	
23	1,155	58.20	76.4	
24	1,706	3.73	3.3	
25	10,380	75.00	10.9	Upper Marker

Assay Class: High Sensitivity DNA Assay
Data Path: C:\...ents and Settings\Bioanalyzer\2013-04-05\2013-04-05_001.xad

Created: 4/5/2013 12:44:44 PM
Modified: 4/5/2013 1:45:59 PM

Electropherogram Summary Continued ...

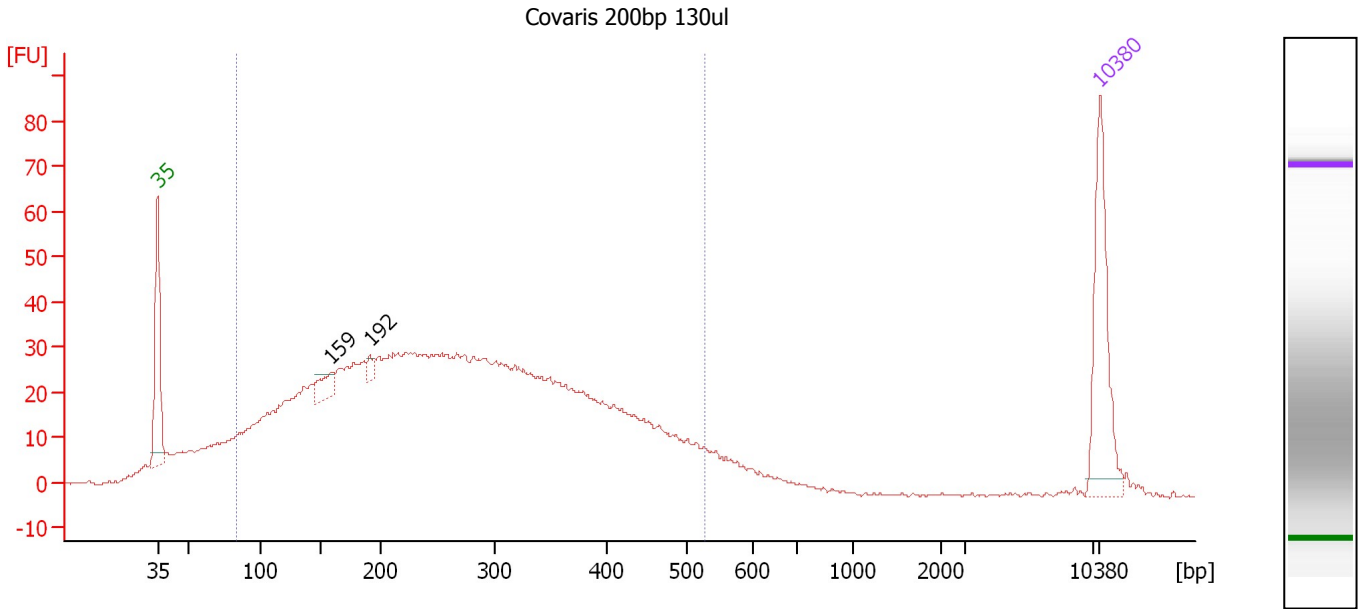
... Region table for sample 6 : sample 11 Resoni 1:6

From [bp]	To [bp]	Average Size [bp]	Molarity [pmol/l]	Conc. [pg/μl]	Corr. Area	% of Total	Size distribution in CV [%]	Color
154	1,971	569	7,038.9	1,751.03	1,157.3	88	59.2	■

Assay Class: High Sensitivity DNA Assay
 Data Path: C:\...ents and Settings\Bioanalyzer\2013-04-05\2013-04-05_001.xad

Created: 4/5/2013 12:44:44 PM
 Modified: 4/5/2013 1:45:59 PM

Electropherogram Summary Continued ...



Overall Results for sample 7 : Covaris 200bp 130ul

Number of peaks found: 2 Corr. Area 1: 1,234.3
 Noise: 0.3

Peak table for sample 7 : Covaris 200bp 130ul

Peak	Size [bp]	Conc. [pg/μl]	Molarity [pmol/l]	Observations
1	35	125.00	5,411.3	Lower Marker
2	159	22.89	218.4	
3	192	8.49	67.1	
4	10,380	75.00	10.9	Upper Marker

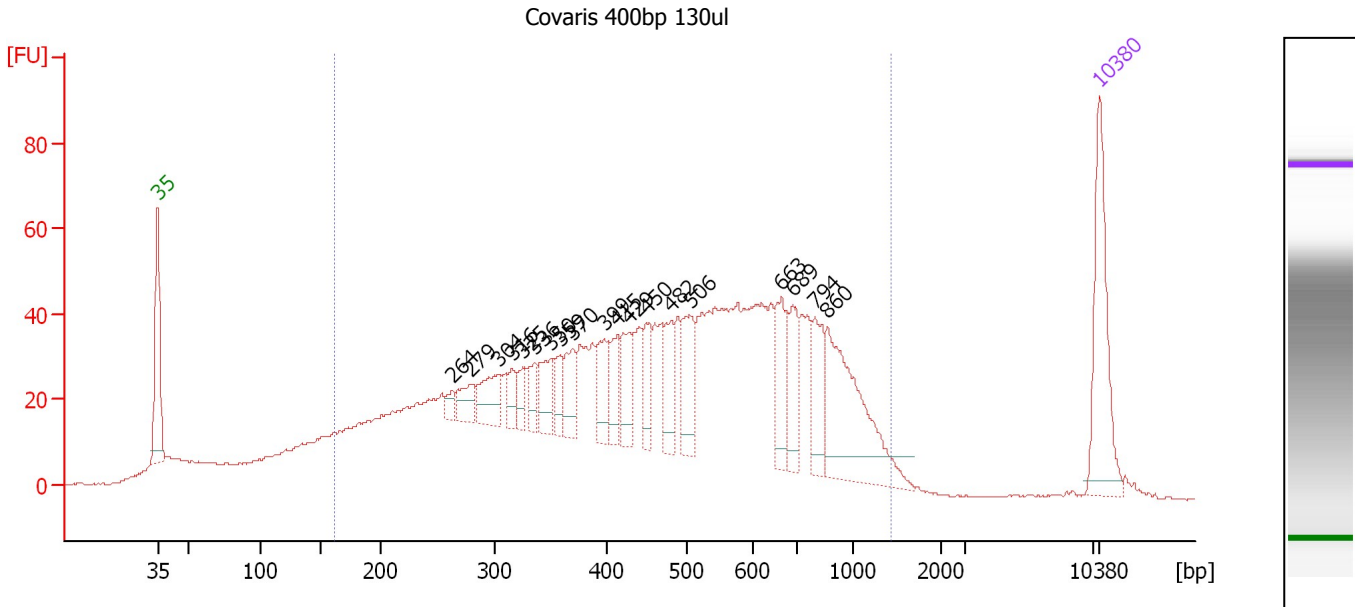
Region table for sample 7 : Covaris 200bp 130ul

From [bp]	To [bp]	Average Size [bp]	Molarity [pmol/l]	Conc. [pg/μl]	Corr. Area	% of Total	Size distribution in CV [%]	Color
84	529	272	13,175.6	1,789.21	1,234.3	88	39.3	Blue

Assay Class: High Sensitivity DNA Assay
 Data Path: C:\...ents and Settings\Bioanalyzer\2013-04-05\2013-04-05_001.xad

Created: 4/5/2013 12:44:44 PM
 Modified: 4/5/2013 1:45:59 PM

Electropherogram Summary Continued ...



Overall Results for sample 8 : Covaris 400bp 130ul

Number of peaks found: 19 Corr. Area 1: 1,659.1
 Noise: 0.2

Peak table for sample 8 : Covaris 400bp 130ul

Peak	Size [bp]	Conc. [pg/µl]	Molarity [pmol/l]	Observations
1	35	125.00	5,411.3	Lower Marker
2	264	9.31	53.5	
3	279	22.38	121.6	
4	304	38.71	193.1	
5	316	18.01	86.4	
6	325	17.23	80.3	
7	336	18.62	83.9	
8	350	34.37	148.8	
9	359	20.84	88.0	
10	370	31.79	130.0	
11	399	33.49	127.3	
12	415	26.90	98.3	
13	429	32.43	114.5	
14	450	28.50	96.0	
15	482	35.68	112.2	
16	506	46.39	138.8	
17	663	43.53	99.5	
18	689	42.52	93.5	
19	794	42.02	80.2	
20	860	124.23	218.8	
21	10,380	75.00	10.9	Upper Marker

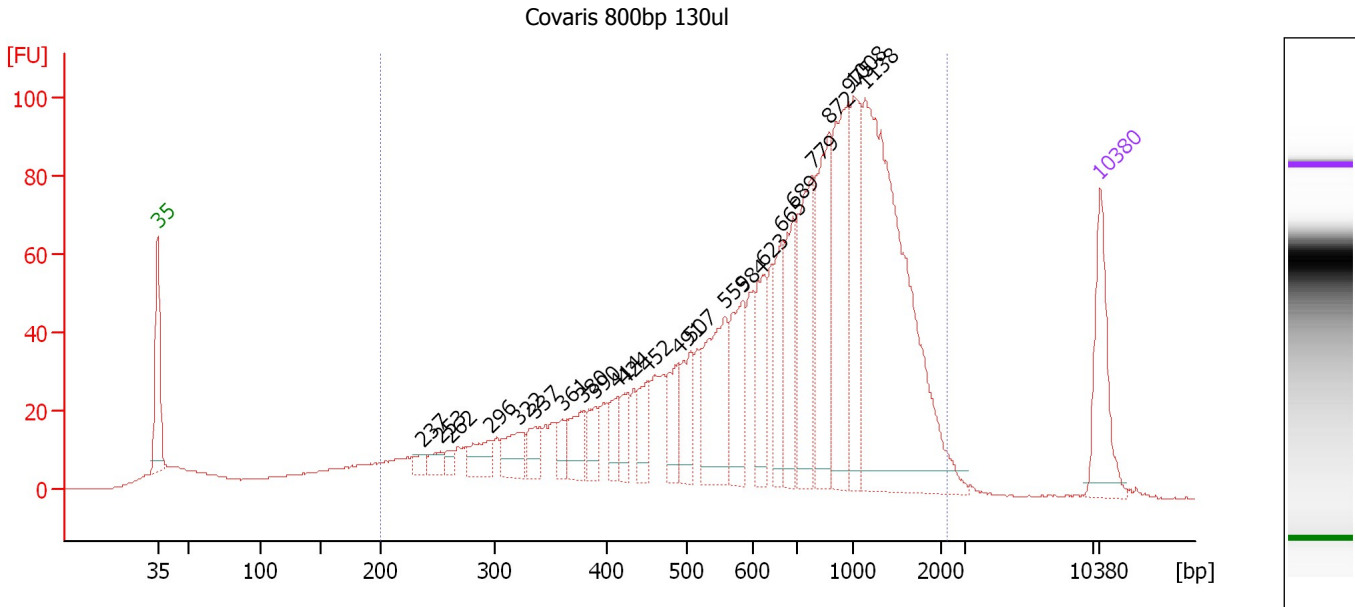
Region table for sample 8 : Covaris 400bp 130ul

From [bp]	To [bp]	Average Size [bp]	Molarity [pmol/l]	Conc. [pg/µl]	Corr. Area	% of Total	Size distribution in CV [%]	Color
162	1,428	506	8,158.8	2,010.55	1,659.1	88	45.8	Blue

Assay Class: High Sensitivity DNA Assay
 Data Path: C:\...ents and Settings\Bioanalyzer\2013-04-05\2013-04-05_001.xad

Created: 4/5/2013 12:44:44 PM
 Modified: 4/5/2013 1:45:59 PM

Electropherogram Summary Continued ...



Overall Results for sample 9 : Covaris 800bp 130ul

Number of peaks found: 24 Corr. Area 1: 1,901.8
 Noise: 0.2

Peak table for sample 9 : Covaris 800bp 130ul

Peak	Size [bp]	Conc. [pg/μl]	Molarity [pmol/l]	Observations
1	35	125.00	5,411.3	Lower Marker
2	237	13.33	85.4	
3	253	17.81	106.6	
4	262	11.25	65.0	
5	296	36.64	187.3	
6	322	41.84	197.1	
7	337	28.35	127.5	
8	361	20.97	88.0	
9	380	41.12	164.1	
10	390	30.93	120.2	
11	414	28.49	104.3	
12	424	28.15	100.6	
13	452	39.36	132.0	
14	491	49.82	153.8	
15	507	53.81	160.8	
16	559	123.40	334.5	
17	584	80.59	209.0	
18	623	68.91	167.6	
19	665	66.06	150.5	
20	689	81.91	180.1	
21	779	136.15	264.7	
22	872	141.64	246.2	
23	975	148.68	231.1	
24	1,008	104.17	156.5	
25	1,138	456.44	607.7	
26	10,380	75.00	10.9	Upper Marker

Assay Class: High Sensitivity DNA Assay
Data Path: C:\...ents and Settings\Bioanalyzer\2013-04-05\2013-04-05_001.xad

Created: 4/5/2013 12:44:44 PM
Modified: 4/5/2013 1:45:59 PM

Electropherogram Summary Continued ...

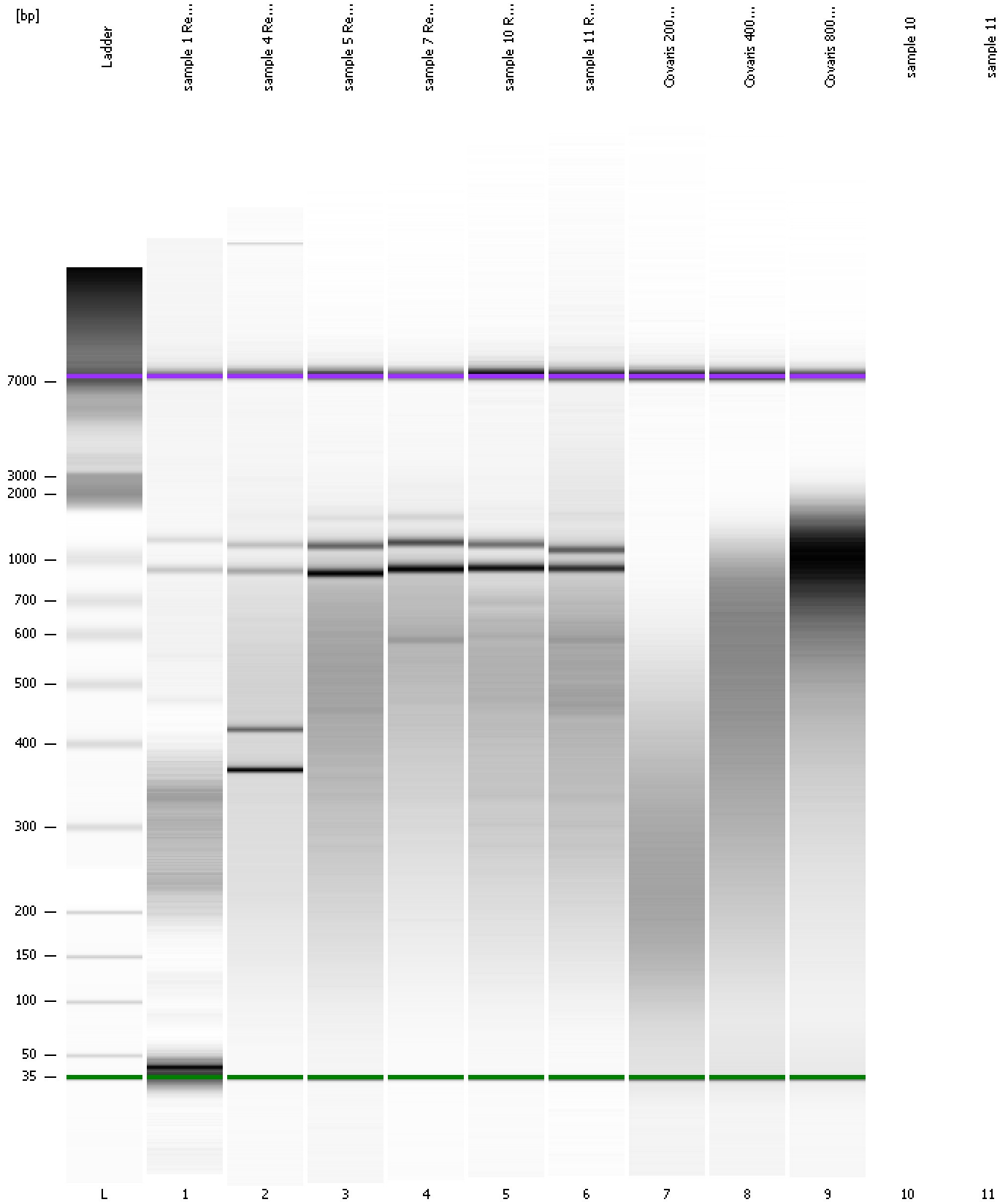
... Region table for sample 9 : Covaris 800bp 130ul

From [bp]	To [bp]	Average Size [bp]	Molarity [pmol/l]	Conc. [pg/μl]	Corr. Area	% of Total	Size distribution in CV [%]	Color
200	2,276	819	6,616.7	2,439.03	1,901.8	91	51.0	■

Assay Class: High Sensitivity DNA Assay
Data Path: C:\...ents and Settings\Bioanalyzer\2013-04-05\2013-04-05_001.xad

Created: 4/5/2013 12:44:44 PM
Modified: 4/5/2013 1:45:59 PM

Gel Image

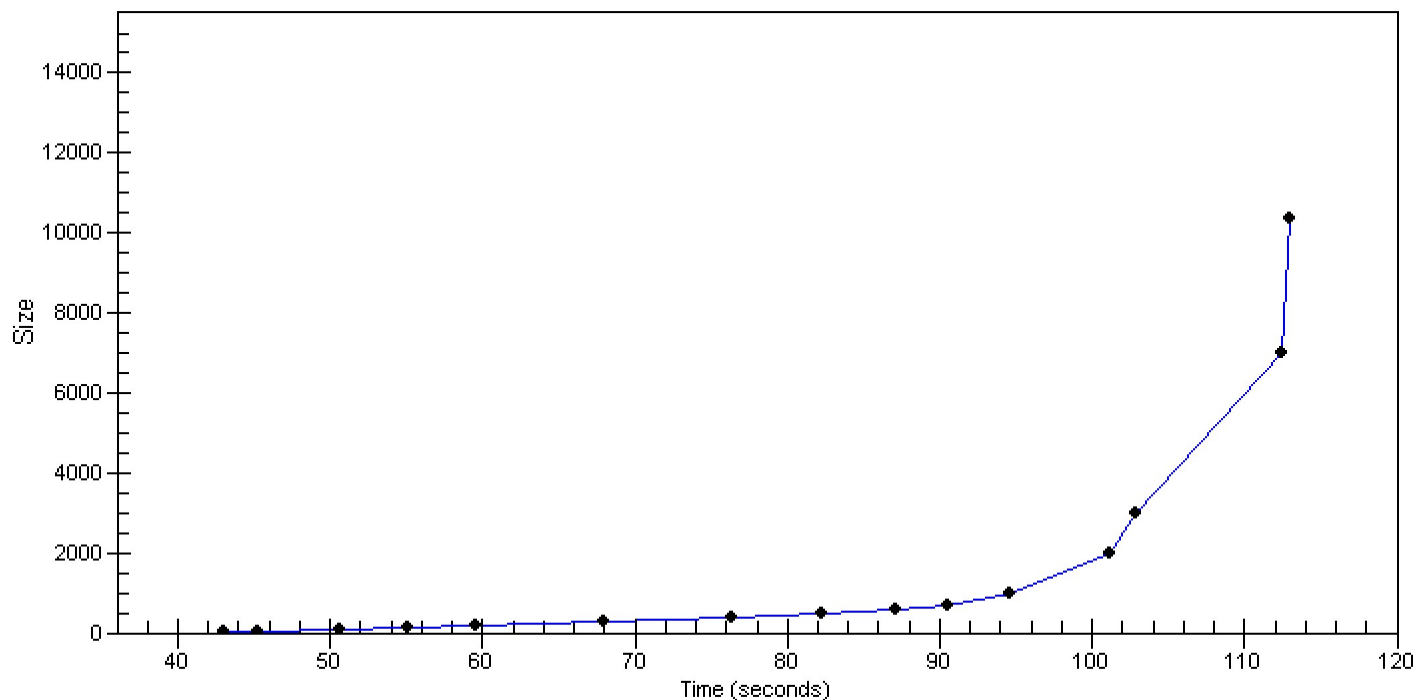


Assay Class: High Sensitivity DNA Assay
Data Path: C:\...ents and Settings\Bioanalyzer\2013-04-05\2013-04-05_001.xad

Created: 4/5/2013 12:44:44 PM
Modified: 4/5/2013 1:45:59 PM

Curves

Standard Curve



Assay Class: High Sensitivity DNA Assay
Data Path: C:\...ents and Settings\Bioanalyzer\2013-04-05\2013-04-05_001.xad

Created: 4/5/2013 12:44:44 PM
Modified: 4/5/2013 1:45:59 PM

Invalid Samples

Sample 10 has not been run, no results available.

Sample 11 has not been run, no results available.

Assay Class: High Sensitivity DNA Assay
 Data Path: C:\...ents and Settings\Bioanalyzer\2013-04-05\2013-04-05_001.xad

Created: 4/5/2013 12:44:44 PM
 Modified: 4/5/2013 1:45:59 PM

Run Logbook

Description	Number	Source	Category	Sub Category	Time	Time Zone	User	Host
Run ended on port 1 (Number of wells acquired: 10)		Instrument	Run		4/5/2013 1:20:20 PM	(GMT --07:00) Pacific Standard Time	UC Davis	D8XSMGH1
Run started on port 1 (File: C:\Documents and Settings\Bioanalyzer\2013-04-05\2013-04-05_001.xad)		Instrument	Run		4/5/2013 12:44:49 PM	(GMT --07:00) Pacific Standard Time	UC Davis	D8XSMGH1
Product Number : G2938B		Instrument	Run		4/5/2013 12:44:49 PM	(GMT --07:00) Pacific Standard Time	UC Davis	D8XSMGH1
Name :		Instrument	Run		4/5/2013 12:44:49 PM	(GMT --07:00) Pacific Standard Time	UC Davis	D8XSMGH1
Vendor : Agilent Technologies		Instrument	Run		4/5/2013 12:44:49 PM	(GMT --07:00) Pacific Standard Time	UC Davis	D8XSMGH1
Serial# : DE13701086		Instrument	Run		4/5/2013 12:44:49 PM	(GMT --07:00) Pacific Standard Time	UC Davis	D8XSMGH1
Firmware : C.01.069		Instrument	Run		4/5/2013 12:44:49 PM	(GMT --07:00) Pacific Standard Time	UC Davis	D8XSMGH1
Cartridge : Electrode		Instrument	Run		4/5/2013 12:44:49 PM	(GMT --07:00) Pacific Standard Time	UC Davis	D8XSMGH1