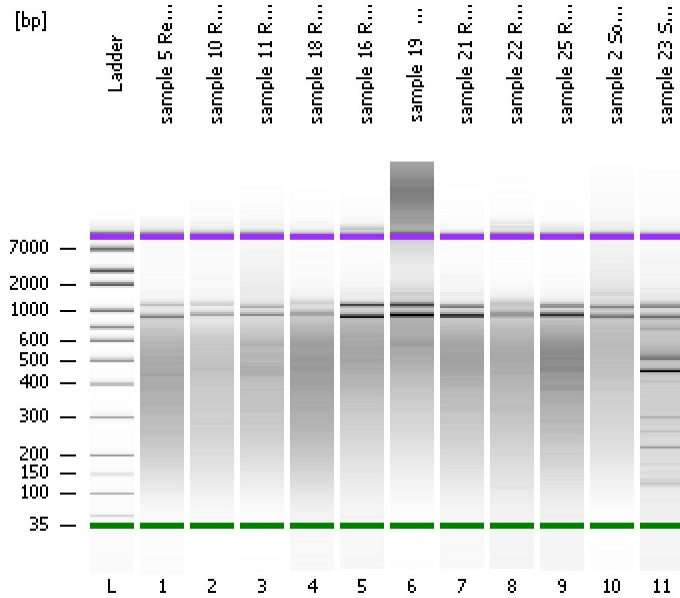


Assay Class: High Sensitivity DNA Assay
Data Path: C:\...ents and Settings\Bioanalyzer\2013-04-08\2013-04-08_003.xad

Created: 4/8/2013 4:11:20 PM
Modified: 4/8/2013 4:56:59 PM

Electrophoresis File Run Summary



Instrument Information:

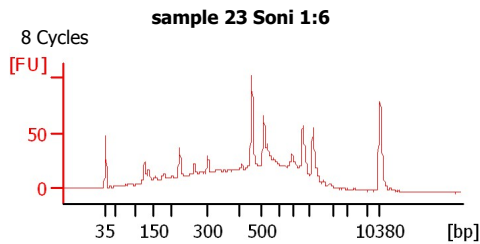
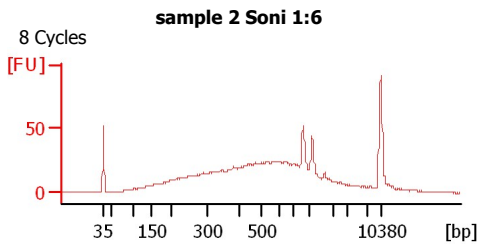
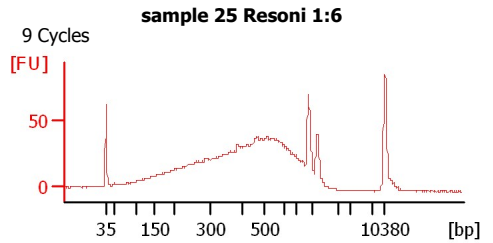
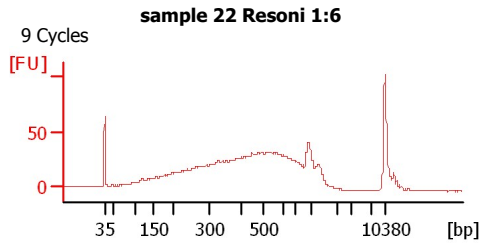
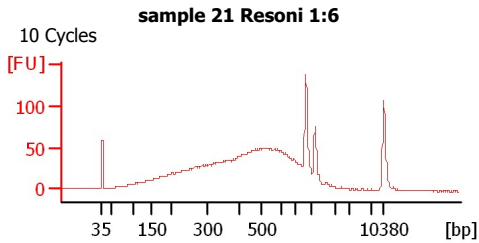
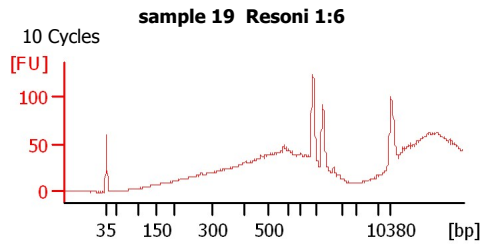
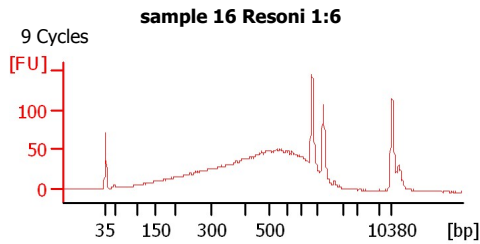
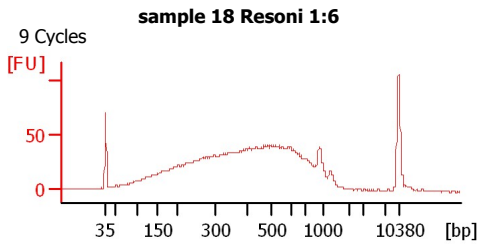
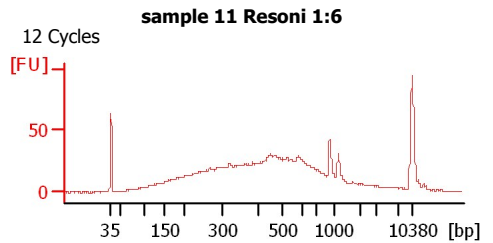
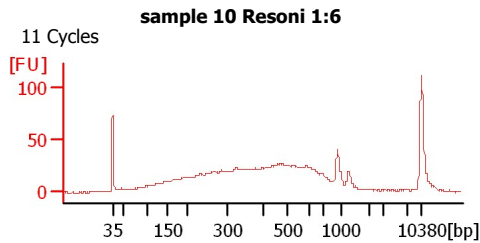
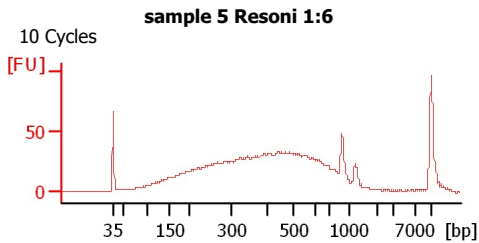
Instrument Name: DE13701086 Firmware: C.01.069
Serial#: DE13701086 Type: G2938B

Assay Information:

Assay Origin Path: C:\Program Files\Agilent\2100 bioanalyzer\2100 expert\assays\dsDNA\High Sensitivity DNA.xsy
Assay Class: High Sensitivity DNA Assay
Version: 1.03
Assay Comments: Copyright © 2003-2010 Agilent Technologies

Chip Information:

Chip Lot #:
Reagent Kit Lot #:
Chip Comments:



Assay Class: High Sensitivity DNA Assay
Data Path: C:\...ents and Settings\Bioanalyzer\2013-04-08\2013-04-08_003.xad

Created: 4/8/2013 4:11:20 PM
Modified: 4/8/2013 4:56:59 PM

Electrophoresis File Run Summary (Chip Summary)

Sample Name	Sample Comment	Rest. Digest	Status	Observation	Result Label	Result Color
sample 5 Resoni 1:6	10 Cycles	<input type="checkbox"/>	✓			
sample 10 Resoni 1:6	11 Cycles	<input type="checkbox"/>	✓			
sample 11 Resoni 1:6	12 Cycles	<input type="checkbox"/>	✓			
sample 18 Resoni 1:6	9 Cycles	<input type="checkbox"/>	✓			
sample 16 Resoni 1:6	9 Cycles	<input type="checkbox"/>	✓			
sample 19 Resoni 1:6	10 Cycles	<input type="checkbox"/>	✓			
sample 21 Resoni 1:6	10 Cycles	<input type="checkbox"/>	✓			
sample 22 Resoni 1:6	9 Cycles	<input type="checkbox"/>	✓			
sample 25 Resoni 1:6	9 Cycles	<input type="checkbox"/>	✓			
sample 2 Soni 1:6	8 Cycles	<input type="checkbox"/>	✓			
sample 23 Soni 1:6	8 Cycles	<input type="checkbox"/>	✓			
Ladder		<input type="checkbox"/>	✓			

Chip Lot #

Reagent Kit Lot #

Chip Comments :

Assay Class: High Sensitivity DNA Assay
Data Path: C:\...ents and Settings\Bioanalyzer\2013-04-08\2013-04-08_003.xad

Created: 4/8/2013 4:11:20 PM
Modified: 4/8/2013 4:56:59 PM

Electrophoresis Assay Details

General Analysis Settings

Number of Available Sample and Ladder Wells (Max.) : 12
Minimum Visible Range [s] : 32
Maximum Visible Range [s] : 138
Start Analysis Time Range [s] : 33
End Analysis Time Range [s] : 137.5
Ladder Concentration [pg/μl] : 1950
Uses Standard Area for Ladder Fragments
Lower Marker Concentration [pg/μl] : 125
Upper Marker Concentration [pg/μl] : 75
Used Upper Marker for Quantitation
Standard Curve Fit is Point to Point
Show Data Aligned to Lower and Upper Marker

Integrator Settings

Integration Start Time [s] : 33.05
Integration End Time [s] : 137
Slope Threshold : 0.8
Height Threshold [FU] : 5
Area Threshold : 0.1
Width Threshold [s] : 0.6
Baseline Plateau [s] : 0.5

Filter Settings

Filter Width [s] : 0.5
Polynomial Order : 4

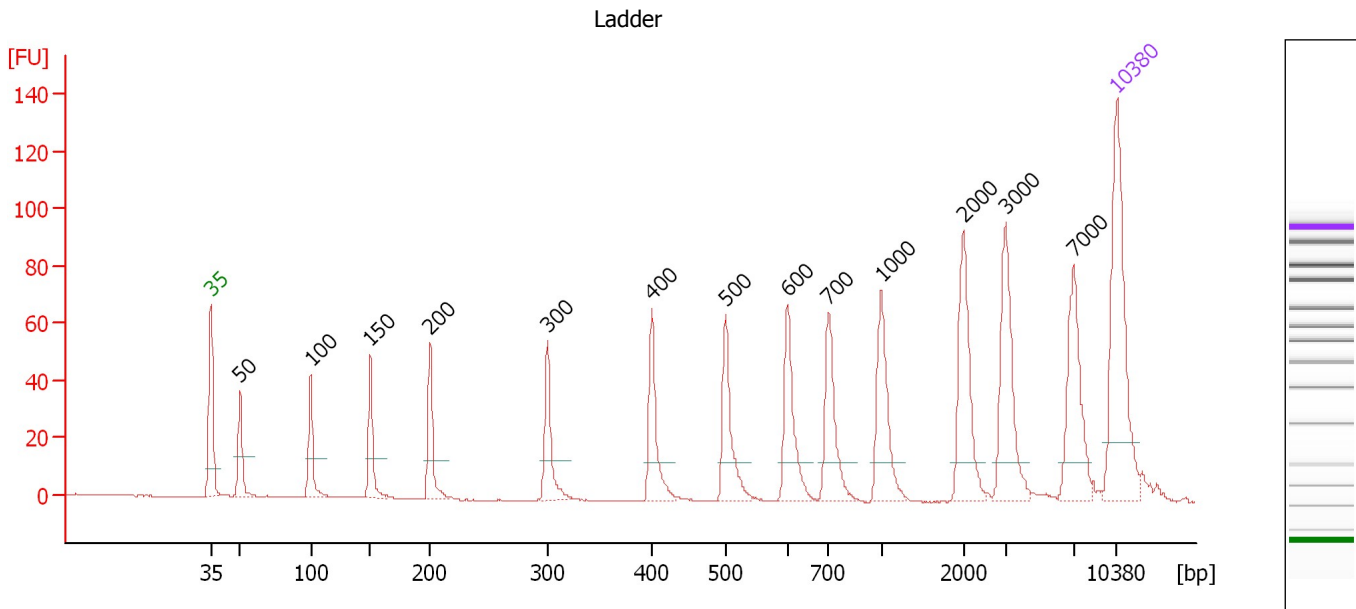
Ladder

Ladder Peak	Size	Area
1	35	160
2	50	210
3	100	208
4	150	221
5	200	242
6	300	270
7	400	305
8	500	306
9	600	336
10	700	321
11	1000	366
12	2000	413
13	3000	411
14	7000	400
15	10380	214

Assay Class: High Sensitivity DNA Assay
 Data Path: C:\...ents and Settings\Bioanalyzer\2013-04-08\2013-04-08_003.xad

Created: 4/8/2013 4:11:20 PM
 Modified: 4/8/2013 4:56:59 PM

Electropherogram Summary



Overall Results for Ladder

Noise: 0.1

Peak table for Ladder

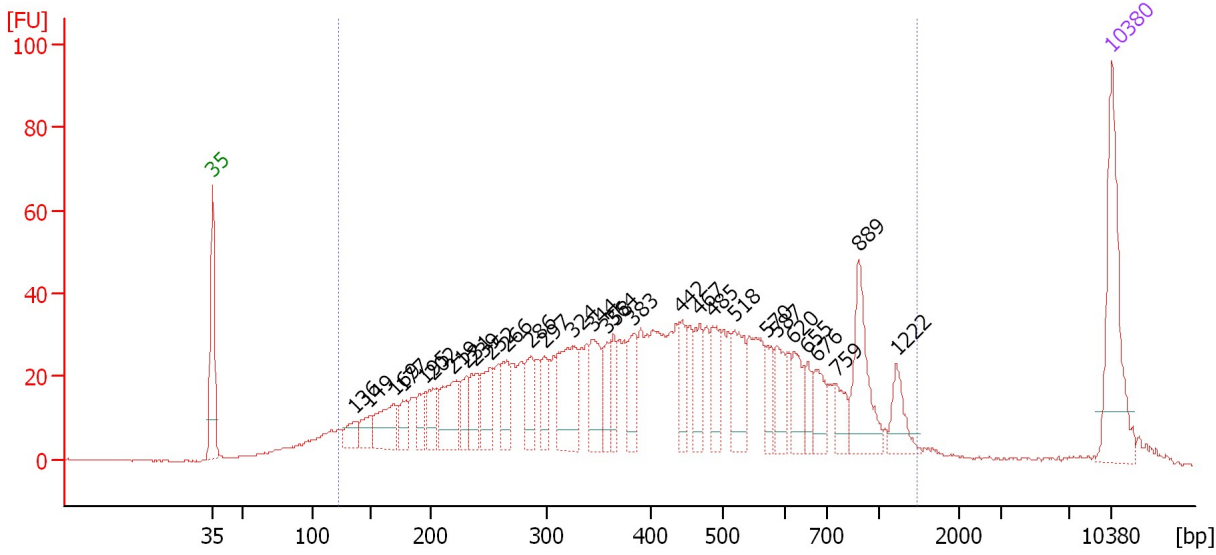
Peak	Size [bp]	Conc. [pg/μl]	Molarity [pmol/l]	Observations
1	35	125.00	5,411.3	Lower Marker
2	50	150.00	4,545.5	Ladder Peak
3	100	150.00	2,272.7	Ladder Peak
4	150	150.00	1,515.2	Ladder Peak
5	200	150.00	1,136.4	Ladder Peak
6	300	150.00	757.6	Ladder Peak
7	400	150.00	568.2	Ladder Peak
8	500	150.00	454.5	Ladder Peak
9	600	150.00	378.8	Ladder Peak
10	700	150.00	324.7	Ladder Peak
11	1,000	150.00	227.3	Ladder Peak
12	2,000	150.00	113.6	Ladder Peak
13	3,000	150.00	75.8	Ladder Peak
14	7,000	150.00	32.5	Ladder Peak
15	10,380	75.00	10.9	Upper Marker

Assay Class: High Sensitivity DNA Assay
 Data Path: C:\...ents and Settings\Bioanalyzer\2013-04-08\2013-04-08_003.xad

Created: 4/8/2013 4:11:20 PM
 Modified: 4/8/2013 4:56:59 PM

Electropherogram Summary Continued ...

sample 5 Resoni 1:6 [10 Cycles]



Overall Results for sample 1 : sample 5 Resoni 1:6

Number of peaks found: 30 Corr. Area 1: 1,483.2
 Noise: 0.2

Peak table for sample 1 : sample 5 Resoni 1:6


Peak	Size [bp]	Conc. [pg/μl]	Molarity [pmol/l]	Observations
1	35	125.00	5,411.3	Lower Marker
2	136	20.67	230.9	
3	149	23.32	237.6	
4	169	47.68	426.5	
5	177	21.61	185.5	
6	195	24.78	192.5	
7	202	30.73	230.2	
8	219	58.18	402.2	
9	231	25.98	170.4	
10	239	28.73	182.2	
11	252	40.97	246.6	
12	266	34.59	197.1	
13	286	34.35	181.7	
14	297	30.12	153.4	
15	324	76.28	356.3	
16	344	42.65	187.6	
17	358	26.60	112.5	
18	364	23.92	99.4	
19	383	35.96	142.1	
20	442	28.20	96.6	
21	467	33.58	108.9	
22	485	36.71	114.6	
23	518	44.65	130.6	
24	570	19.82	52.7	
25	587	28.94	74.7	
26	620	26.11	63.8	

Assay Class: High Sensitivity DNA Assay
 Data Path: C:\...ents and Settings\Bioanalyzer\2013-04-08\2013-04-08_003.xad


Created: 4/8/2013 4:11:20 PM
 Modified: 4/8/2013 4:56:59 PM

Electropherogram Summary Continued ...

... Peak table for sample 1 : sample 5 Resoni 1:6

Peak	Size [bp]	Conc. [pg/μl]	Molarity [pmol/l]	Observations
27	655	15.62	36.1	
28	676	26.18	58.7	
29	759	20.34	40.6	
30	889	59.73	101.8	
31	1,222	23.91	29.7	
32	 10,380	75.00	10.9	Upper Marker

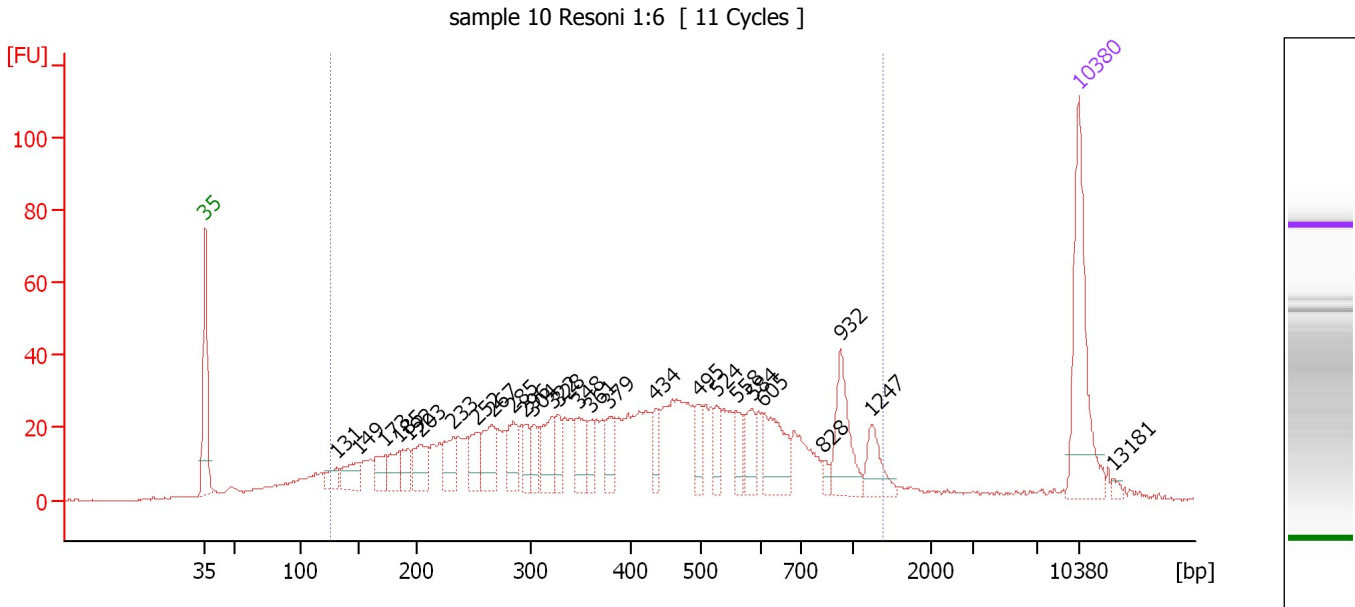
Region table for sample 1 : sample 5 Resoni 1:6

From [bp]	To [bp]	Average Size [bp]	Molarity [pmol/l]	Conc. [pg/μl]	Corr. Area	% of Total	Size distribution in CV [%]	Color
123	1,472	457	8,308.8	1,726.87	1,483.2	94	52.2	

Assay Class: High Sensitivity DNA Assay
 Data Path: C:\...ents and Settings\Bioanalyzer\2013-04-08\2013-04-08_003.xad

Created: 4/8/2013 4:11:20 PM
 Modified: 4/8/2013 4:56:59 PM

Electropherogram Summary Continued ...



Overall Results for sample 2 : sample 10 Resoni 1:6

Number of peaks found: 27 Corr. Area 1: 1,203.4
 Noise: 0.3

Peak table for sample 2 : sample 10 Resoni 1:6

Peak	Size [bp]	Conc. [pg/μl]	Molarity [pmol/l]	Observations
1	35	125.00	5,411.3	Lower Marker
2	131	16.94	195.6	
3	149	25.69	260.8	
4	173	21.95	192.4	
5	185	24.05	197.1	
6	192	17.53	138.2	
7	203	32.51	242.1	
8	233	30.01	195.5	
9	252	26.28	157.8	
10	267	38.18	217.0	
11	285	29.09	154.4	
12	296	16.70	85.4	
13	304	17.53	87.5	
14	322	32.10	151.2	
15	328	17.70	81.8	
16	348	26.33	114.6	
17	361	16.73	70.2	
18	379	22.63	90.5	
19	434	15.99	55.8	
20	495	18.70	57.2	
21	524	16.45	47.6	
22	558	16.69	45.4	
23	584	21.45	55.6	
24	605	44.93	112.6	
25	828	5.65	10.3	
26	932	44.74	72.7	

Assay Class: High Sensitivity DNA Assay
Data Path: C:\...ents and Settings\Bioanalyzer\2013-04-08\2013-04-08_003.xad

Created: 4/8/2013 4:11:20 PM
Modified: 4/8/2013 4:56:59 PM

Electropherogram Summary Continued ...**... Peak table for sample 2 : sample 10 Resoni 1:6**

Peak	Size [bp]	Conc. [pg/ μ l]	Molarity [pmol/l]	Observations
27	1,247	22.54	27.4	
28	10,380	75.00	10.9	Upper Marker
29	13,181	0.00	0.0	

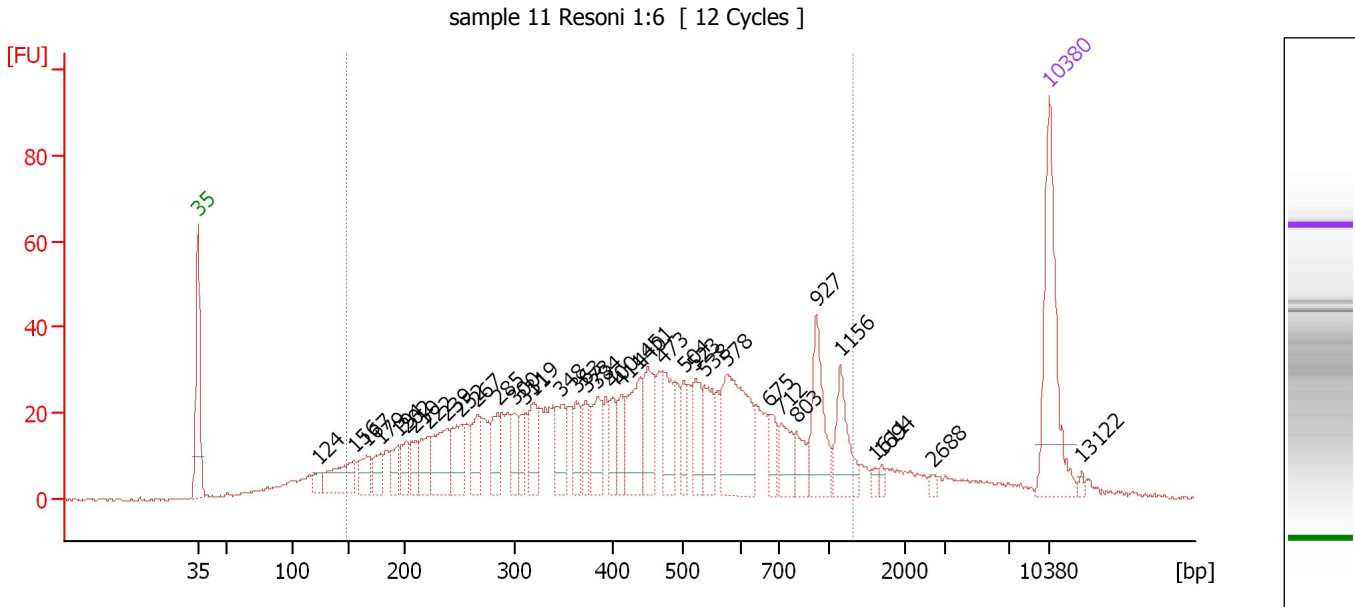
Region table for sample 2 : sample 10 Resoni 1:6

From [bp]	To [bp]	Average Size [bp]	Molarity [pmol/l]	Conc. [pg/ μ l]	Corr. Area	% of Total	Size distribution in CV [%]	Color
125	1,402	459	5,886.0	1,207.38	1,203.4	89	53.5	

Assay Class: High Sensitivity DNA Assay
 Data Path: C:\...ents and Settings\Bioanalyzer\2013-04-08\2013-04-08_003.xad

Created: 4/8/2013 4:11:20 PM
 Modified: 4/8/2013 4:56:59 PM

Electropherogram Summary Continued ...



Overall Results for sample 3 : sample 11 Resoni 1:6

Number of peaks found: 37 Corr. Area 1: 1,149.6
 Noise: 0.3

Peak table for sample 3 : sample 11 Resoni 1:6

Peak	Size [bp]	Conc. [pg/μl]	Molarity [pmol/l]	Observations
1	35	125.00	5,411.3	Lower Marker
2	124	12.19	149.1	
3	156	49.26	479.4	
4	167	25.85	235.1	
5	179	20.33	171.7	
6	194	19.23	150.1	
7	202	19.65	147.2	
8	210	19.73	142.3	
9	222	29.69	203.0	
10	239	50.21	318.2	
11	252	39.55	238.2	
12	267	31.36	178.2	
13	285	29.01	154.3	
14	300	20.91	105.6	
15	311	20.30	98.9	
16	319	32.02	152.1	
17	348	34.54	150.5	
18	363	24.77	103.4	
19	373	21.37	86.9	
20	384	36.65	144.6	
21	400	21.16	80.2	
22	411	19.86	73.2	
23	440	50.32	173.3	
24	451	46.28	155.6	
25	473	38.57	123.6	
26	504	21.02	63.2	

Assay Class: High Sensitivity DNA Assay
 Data Path: C:\...ents and Settings\Bioanalyzer\2013-04-08\2013-04-08_003.xad


Created: 4/8/2013 4:11:20 PM
 Modified: 4/8/2013 4:56:59 PM

Electropherogram Summary Continued ...

... Peak table for sample 3 : sample 11 Resoni 1:6

Peak	Size [bp]	Conc. [pg/µl]	Molarity [pmol/l]	Observations
27	523	30.23	87.6	
28	538	30.62	86.2	
29	578	89.20	233.9	
30	675	17.75	39.9	
31	712	23.66	50.4	
32	803	16.16	30.5	
33	927	49.23	80.5	
34	1,156	35.72	46.8	
35	1,611	3.62	3.4	
36	1,694	3.55	3.2	
37	2,688	2.27	1.3	
38	10,380	75.00	10.9	Upper Marker
39	13,122	0.00	0.0	

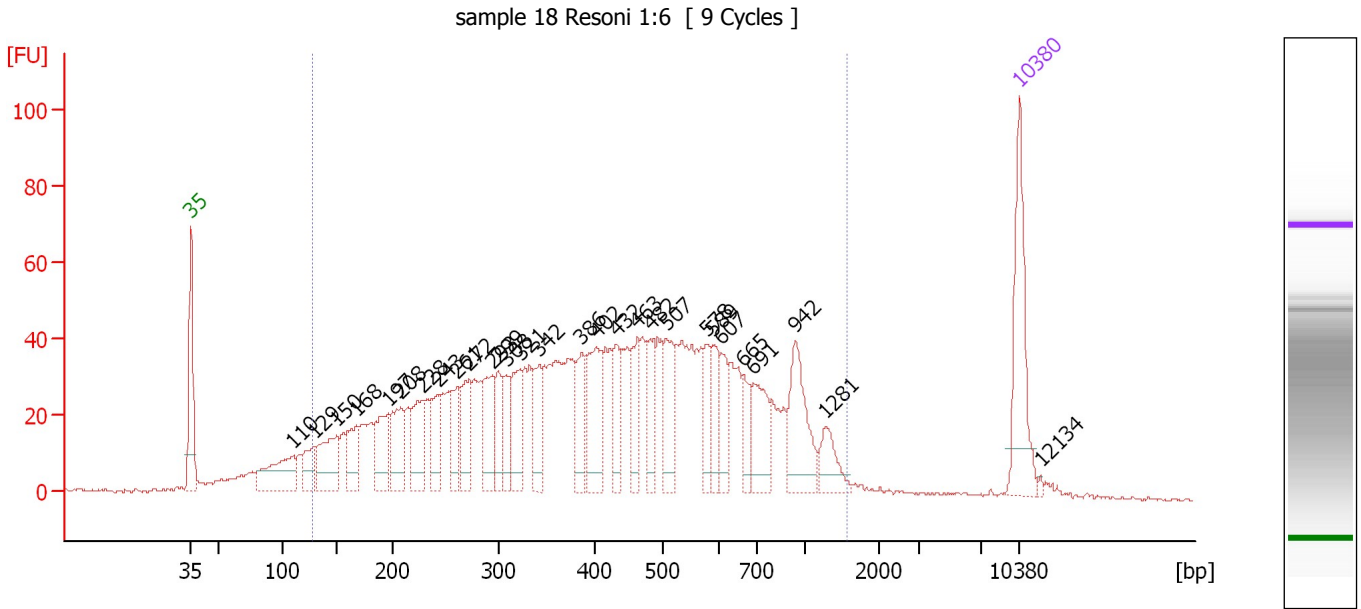
Region table for sample 3 : sample 11 Resoni 1:6

From [bp]	To [bp]	Average Size [bp]	Molarity [pmol/l]	Conc. [pg/µl]	Corr. Area	% of Total	Size distribution in CV [%]	Color
149	1,313	479	6,057.8	1,369.01	1,149.6	87	49.7	

Assay Class: High Sensitivity DNA Assay
 Data Path: C:\...ents and Settings\Bioanalyzer\2013-04-08\2013-04-08_003.xad

Created: 4/8/2013 4:11:20 PM
 Modified: 4/8/2013 4:56:59 PM

Electropherogram Summary Continued ...



Overall Results for sample 4 : sample 18 Resoni 1:6

Number of peaks found: 29 Corr. Area 1: 1,811.8
 Noise: 0.4

Peak table for sample 4 : sample 18 Resoni 1:6

Peak	Size [bp]	Conc. [pg/μl]	Molarity [pmol/l]	Observations
1	35	125.00	5,411.3	Lower Marker
2	110	78.35	1,082.2	
3	129	38.62	454.6	
4	150	74.44	753.5	
5	168	47.43	428.4	
6	197	61.44	473.7	
7	208	63.09	459.9	
8	228	60.76	403.4	
9	243	40.19	251.0	
10	261	46.81	272.2	
11	272	56.27	312.9	
12	293	58.78	303.7	
13	299	37.97	192.3	
14	308	36.59	180.3	
15	321	57.35	270.3	
16	342	44.11	195.3	
17	386	45.67	179.2	
18	402	81.59	307.2	
19	432	38.48	135.0	
20	463	46.05	150.5	
21	482	41.43	130.3	
22	507	50.35	150.4	
23	578	28.48	74.7	
24	589	34.01	87.5	
25	607	35.24	88.0	
26	665	26.24	59.7	

Assay Class: High Sensitivity DNA Assay
 Data Path: C:\...ents and Settings\Bioanalyzer\2013-04-08\2013-04-08_003.xad


Created: 4/8/2013 4:11:20 PM
 Modified: 4/8/2013 4:56:59 PM

Electropherogram Summary Continued ...

... Peak table for sample 4 : sample 18 Resoni 1:6

Peak	Size [bp]	Conc. [pg/μl]	Molarity [pmol/l]	Observations
27	691	52.56	115.3	
28	942	70.35	113.2	
29	1,281	27.83	32.9	
30	10,380	75.00	10.9	Upper Marker
31	12,134	0.00	0.0	

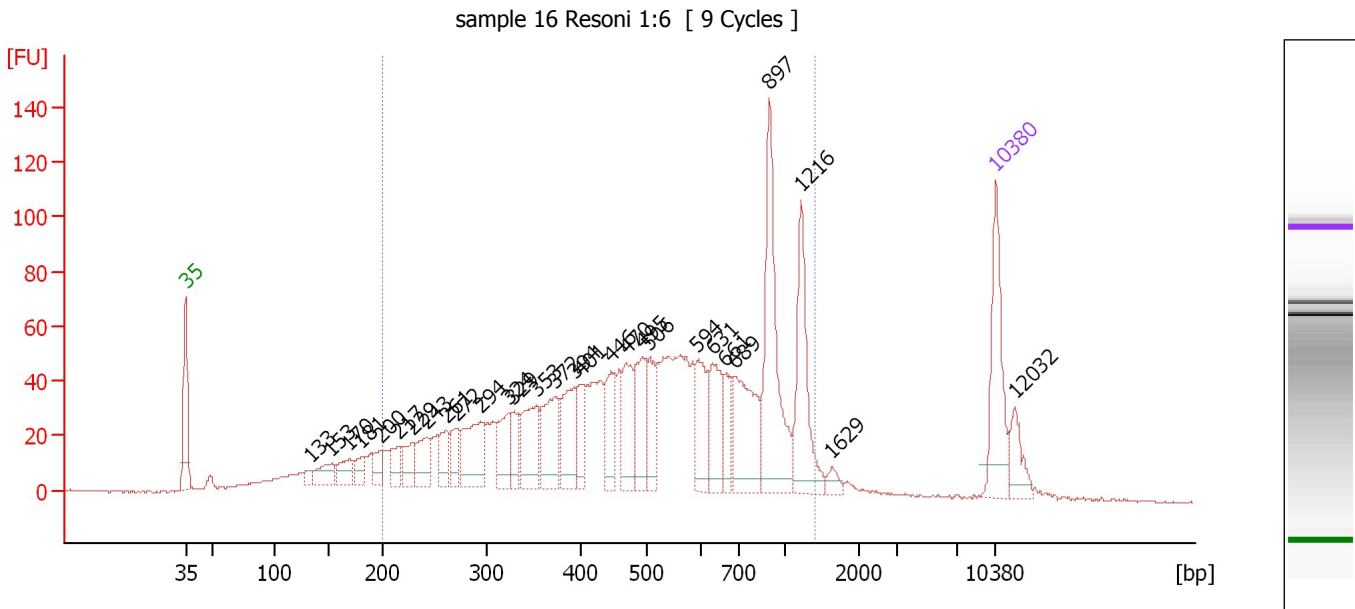
Region table for sample 4 : sample 18 Resoni 1:6

From [bp]	To [bp]	Average Size [bp]	Molarity [pmol/l]	Conc. [pg/μl]	Corr. Area	% of Total	Size distribution in CV [%]	Color
127	1,553	464	10,379.9	2,181.76	1,811.8	92	52.6	

Assay Class: High Sensitivity DNA Assay
 Data Path: C:\...ents and Settings\Bioanalyzer\2013-04-08\2013-04-08_003.xad

Created: 4/8/2013 4:11:20 PM
 Modified: 4/8/2013 4:56:59 PM

Electropherogram Summary Continued ...



Overall Results for sample 5 : sample 16 Resoni 1:6

Number of peaks found: 29 Corr. Area 1: 1,863.5
 Noise: 0.2

Peak table for sample 5 : sample 16 Resoni 1:6


Peak	Size [bp]	Conc. [pg/μl]	Molarity [pmol/l]	Observations
1	35	125.00	5,411.3	Lower Marker
2	133	8.37	95.6	
3	153	32.88	325.3	
4	170	29.62	264.6	
5	181	19.82	165.8	
6	200	23.23	176.4	
7	217	30.28	211.6	
8	229	34.59	228.9	
9	243	45.96	286.9	
10	261	34.97	202.6	
11	272	32.37	180.6	
12	294	80.80	415.7	
13	324	46.88	219.2	
14	329	28.94	133.4	
15	353	73.77	316.5	
16	372	77.33	314.6	
17	394	69.14	266.2	
18	401	36.43	137.8	
19	446	51.14	173.8	
20	470	62.55	201.6	
21	495	69.68	213.2	
22	506	49.40	148.0	
23	594	59.14	151.0	
24	631	57.18	137.4	
25	661	30.39	69.7	
26	689	101.36	222.8	

Assay Class: High Sensitivity DNA Assay
 Data Path: C:\...ents and Settings\Bioanalyzer\2013-04-08\2013-04-08_003.xad

Created: 4/8/2013 4:11:20 PM
 Modified: 4/8/2013 4:56:59 PM

Electropherogram Summary Continued ...

... Peak table for sample 5 : sample 16 Resoni 1:6

Peak	Size [bp]	Conc. [pg/μl]	Molarity [pmol/l]	Observations
27	897	158.73	268.2	
28	1,216	97.52	121.5	
29	1,629	8.91	8.3	
30	 10,380	75.00	10.9	Upper Marker
31	12,032	0.00	0.0	

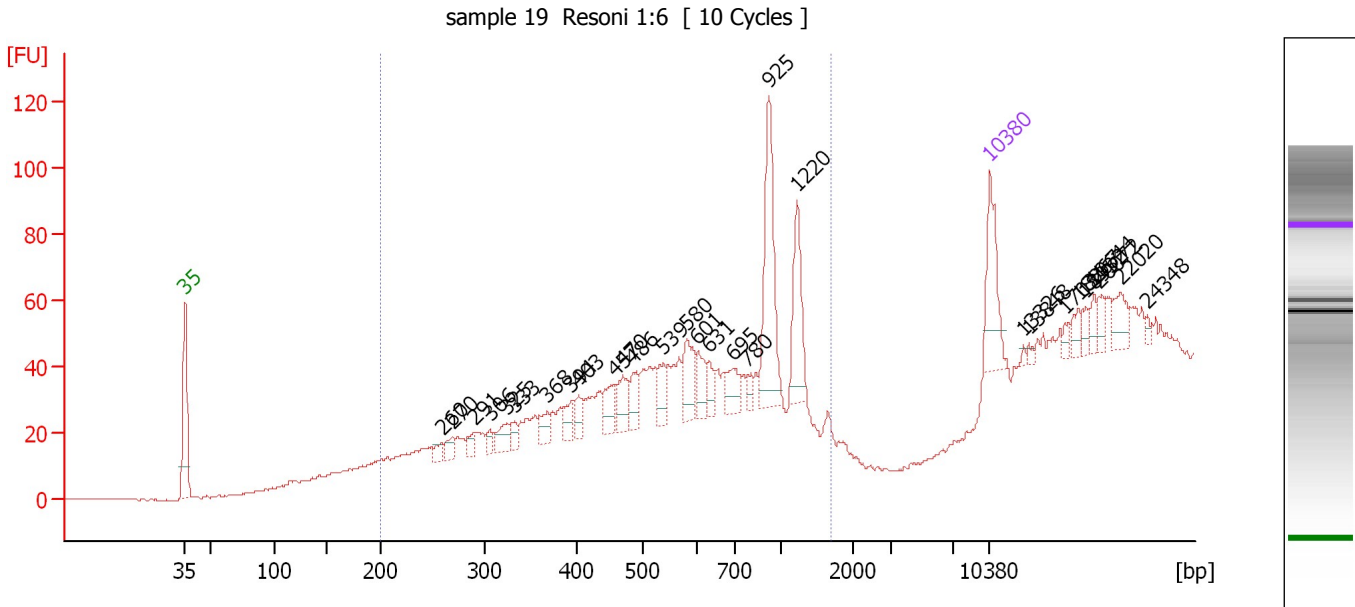
Region table for sample 5 : sample 16 Resoni 1:6

From [bp]	To [bp]	Average Size [bp]	Molarity [pmol/l]	Conc. [pg/μl]	Corr. Area	% of Total	Size distribution in CV [%]	Color
200	1,413	571	6,826.4	1,904.73	1,863.5	85	47.8	

Assay Class: High Sensitivity DNA Assay
 Data Path: C:\...ents and Settings\Bioanalyzer\2013-04-08\2013-04-08_003.xad

Created: 4/8/2013 4:11:20 PM
 Modified: 4/8/2013 4:56:59 PM

Electropherogram Summary Continued ...



Overall Results for sample 6 : sample 19 Resoni 1:6

Number of peaks found: 29 Corr. Area 1: 510.6
 Noise: 0.2

Peak table for sample 6 : sample 19 Resoni 1:6

Peak	Size [bp]	Conc. [pg/μl]	Molarity [pmol/l]	Observations
1	35	125.00	5,411.3	Lower Marker
2	260	16.21	94.6	
3	270	21.27	119.3	
4	291	17.32	90.3	
5	306	13.64	67.5	
6	325	32.70	152.3	
7	333	15.76	71.8	
8	368	24.81	102.1	
9	394	25.53	98.2	
10	403	23.70	89.1	
11	457	40.49	134.1	
12	470	44.55	143.7	
13	486	35.57	110.9	
14	539	32.42	91.2	
15	580	56.78	148.2	
16	601	34.06	85.9	
17	631	20.90	50.2	
18	695	34.94	76.2	
19	780	12.82	24.9	
20	925	164.41	269.3	
21	1,220	84.46	104.9	
22	10,380	75.00	10.9	Upper Marker
23	13,326	0.00	0.0	
24	13,848	0.00	0.0	
25	17,031	0.00	0.0	
26	18,267	0.00	0.0	


Assay Class: High Sensitivity DNA Assay
Data Path: C:\...ents and Settings\Bioanalyzer\2013-04-08\2013-04-08_003.xad

Created: 4/8/2013 4:11:20 PM
Modified: 4/8/2013 4:56:59 PM

Electropherogram Summary Continued ...**... Peak table for sample 6 : sample 19 Resoni 1:6**

Peak	Size [bp]	Conc. [pg/μl]	Molarity [pmol/l]	Observations
27	18,932	0.00	0.0	
28	19,644	0.00	0.0	
29	20,072	0.00	0.0	
30	22,020	0.00	0.0	
31	24,348	0.00	0.0	

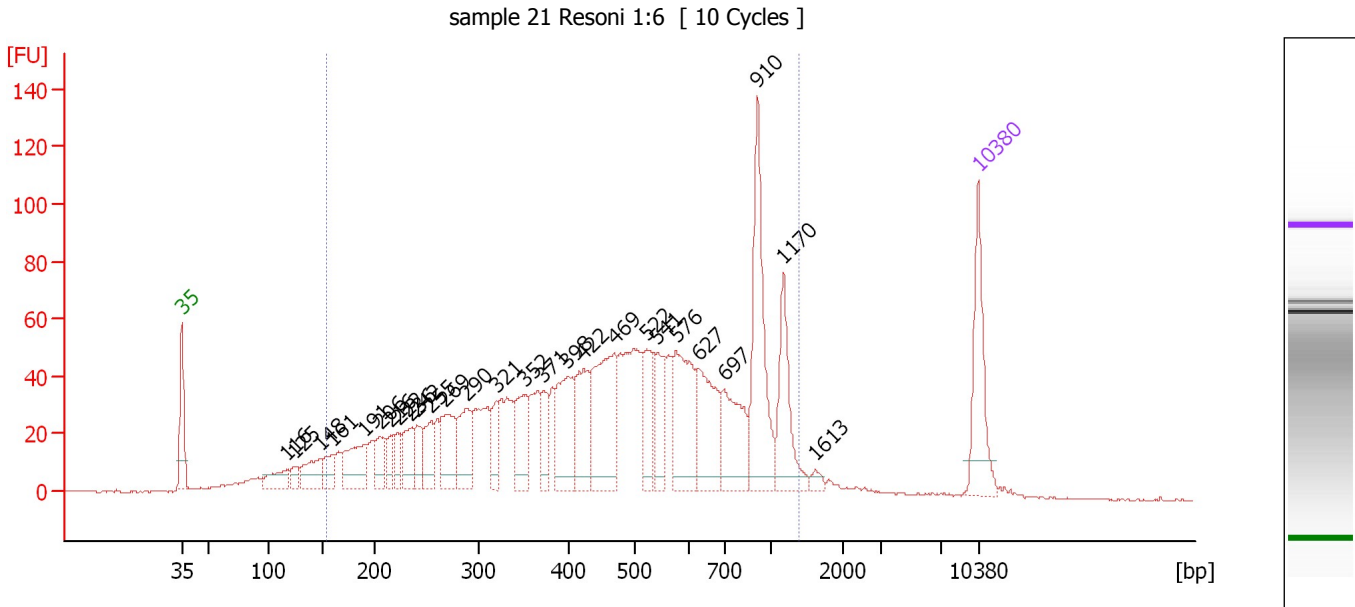
Region table for sample 6 : sample 19 Resoni 1:6

From [bp]	To [bp]	Average Size [bp]	Molarity [pmol/l]	Conc. [pg/μl]	Corr. Area	% of Total	Size distribution in CV [%]	Color
200	1,676	686	2,621.6	936.09	510.6	78	40.8	

Assay Class: High Sensitivity DNA Assay
 Data Path: C:\...ents and Settings\Bioanalyzer\2013-04-08\2013-04-08_003.xad

Created: 4/8/2013 4:11:20 PM
 Modified: 4/8/2013 4:56:59 PM

Electropherogram Summary Continued ...



Overall Results for sample 7 : sample 21 Resoni 1:6

Number of peaks found: 27 Corr. Area 1: 1,968.4
 Noise: 0.3

Peak table for sample 7 : sample 21 Resoni 1:6

Peak	Size [bp]	Conc. [pg/μl]	Molarity [pmol/l]	Observations
1	35	125.00	5,411.3	Lower Marker
2	116	40.32	524.5	
3	125	17.59	214.0	
4	148	52.73	538.2	
5	161	34.61	326.4	
6	191	76.54	608.6	
7	206	38.17	280.9	
8	216	26.30	184.3	
9	222	27.19	185.2	
10	236	43.44	279.1	
11	242	33.71	211.4	
12	255	49.87	296.4	
13	269	76.43	430.7	
14	290	71.29	373.0	
15	321	35.02	165.4	
16	352	61.03	262.7	
17	371	35.90	146.5	
18	398	102.85	391.6	
19	422	79.94	287.2	
20	469	150.41	486.3	
21	522	58.02	168.3	
22	541	54.85	153.6	
23	576	118.99	312.8	
24	627	99.03	239.1	
25	697	87.87	190.9	
26	910	154.71	257.7	

Assay Class: High Sensitivity DNA Assay
 Data Path: C:\...ents and Settings\Bioanalyzer\2013-04-08\2013-04-08_003.xad


Created: 4/8/2013 4:11:20 PM
 Modified: 4/8/2013 4:56:59 PM

Electropherogram Summary Continued ...

... Peak table for sample 7 : sample 21 Resoni 1:6

Peak	Size [bp]	Conc. [pg/ μ l]	Molarity [pmol/l]	Observations
27	1,170	79.86	103.4	
28	1,613	7.66	7.2	
29	10,380	75.00	10.9	Upper Marker

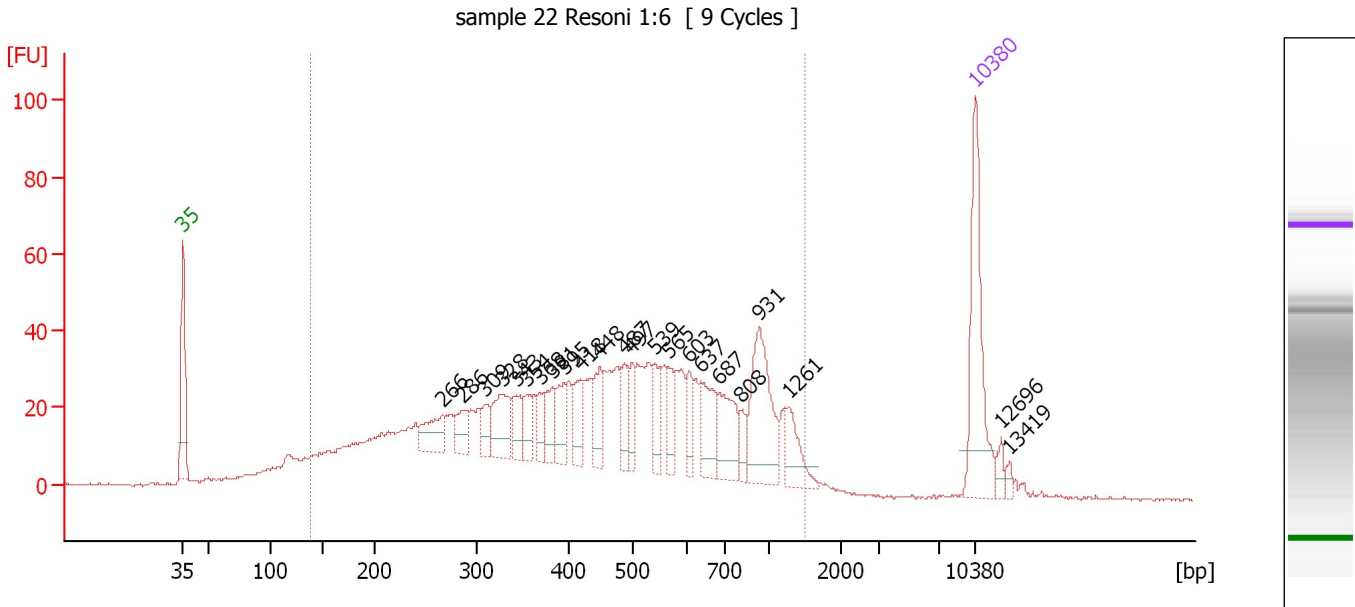
Region table for sample 7 : sample 21 Resoni 1:6

From [bp]	To [bp]	Average Size [bp]	Molarity [pmol/l]	Conc. [pg/ μ l]	Corr. Area	% of Total	Size distribution in CV [%]	Color
154	1,388	526	9,259.3	2,262.30	1,968.4	91	49.5	

Assay Class: High Sensitivity DNA Assay
 Data Path: C:\...ents and Settings\Bioanalyzer\2013-04-08\2013-04-08_003.xad

Created: 4/8/2013 4:11:20 PM
 Modified: 4/8/2013 4:56:59 PM

Electropherogram Summary Continued ...



Overall Results for sample 8 : sample 22 Resoni 1:6

Number of peaks found: 23 Corr. Area 1: 1,340.8
 Noise: 0.4

Peak table for sample 8 : sample 22 Resoni 1:6

Peak	Size [bp]	Conc. [pg/μl]	Molarity [pmol/l]	Observations
1	35	125.00	5,411.3	Lower Marker
2	266	34.81	198.3	
3	286	23.63	125.3	
4	309	17.20	84.3	
5	328	45.01	207.8	
6	343	22.16	97.9	
7	354	22.30	95.3	
8	368	18.91	77.8	
9	381	24.67	98.0	
10	395	27.27	104.7	
11	418	29.75	107.9	
12	448	28.24	95.5	
13	487	23.36	72.7	
14	497	21.70	66.1	
15	539	28.94	81.3	
16	565	21.36	57.3	
17	603	17.97	45.1	
18	637	39.82	94.7	
19	687	45.51	100.4	
20	808	11.71	22.0	
21	931	77.33	125.9	
22	1,261	27.50	33.0	
23	10,380	75.00	10.9	Upper Marker
24	12,696	0.00	0.0	
25	13,419	0.00	0.0	

Assay Class: High Sensitivity DNA Assay
Data Path: C:\...ents and Settings\Bioanalyzer\2013-04-08\2013-04-08_003.xad

Created: 4/8/2013 4:11:20 PM
Modified: 4/8/2013 4:56:59 PM

Electropherogram Summary Continued ...

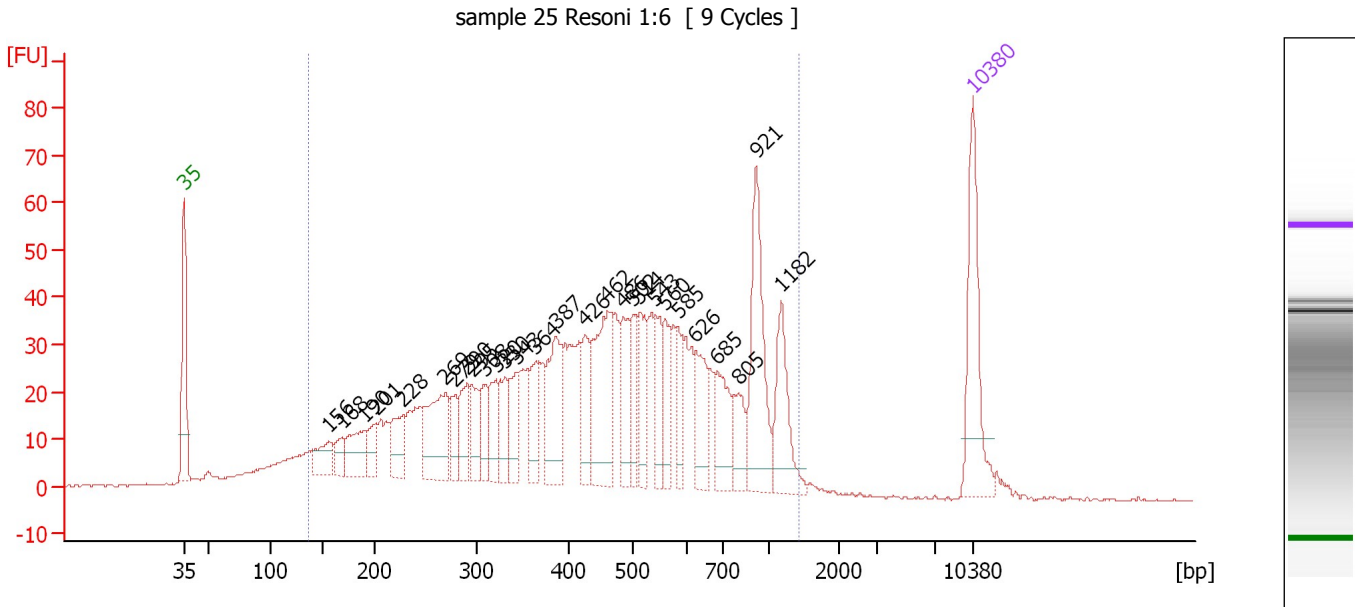
... Region table for sample 8 : sample 22 Resoni 1:6

From [bp]	To [bp]	Average Size [bp]	Molarity [pmol/l]	Conc. [pg/μl]	Corr. Area	% of Total	Size distribution in CV [%]	Color
138	1,478	508	6,305.8	1,455.78	1,340.8	92	51.9	■

Assay Class: High Sensitivity DNA Assay
 Data Path: C:\...ents and Settings\Bioanalyzer\2013-04-08\2013-04-08_003.xad

Created: 4/8/2013 4:11:20 PM
 Modified: 4/8/2013 4:56:59 PM

Electropherogram Summary Continued ...



Overall Results for sample 9 : sample 25 Resoni 1:6

Number of peaks found: 28 Corr. Area 1: 1,436.5
 Noise: 0.3

Peak table for sample 9 : sample 25 Resoni 1:6

Peak	Size [bp]	Conc. [pg/μl]	Molarity [pmol/l]	Observations
1	35	125.00	5,411.3	Lower Marker
2	156	34.03	330.9	
3	168	21.39	192.7	
4	190	47.22	377.3	
5	201	27.13	204.6	
6	228	44.05	292.7	
7	269	90.99	512.1	
8	279	30.85	167.8	
9	290	38.92	203.3	
10	295	35.04	180.1	
11	308	30.65	150.9	
12	320	33.17	156.8	
13	330	35.48	162.7	
14	343	38.17	168.7	
15	364	35.75	148.9	
16	387	77.24	302.7	
17	426	47.19	167.9	
18	462	110.54	362.8	
19	486	49.01	152.9	
20	502	35.62	107.5	
21	514	45.70	134.8	
22	543	35.67	99.4	
23	560	36.19	97.9	
24	585	28.97	75.0	
25	626	45.70	110.6	
26	685	48.48	107.2	

Assay Class: High Sensitivity DNA Assay
Data Path: C:\...ents and Settings\Bioanalyzer\2013-04-08\2013-04-08_003.xad


Created: 4/8/2013 4:11:20 PM
Modified: 4/8/2013 4:56:59 PM

Electropherogram Summary Continued ...

... Peak table for sample 9 : sample 25 Resoni 1:6

Peak	Size [bp]	Conc. [pg/μl]	Molarity [pmol/l]	Observations
27	805	30.32	57.1	
28	921	102.74	169.1	
29	1,182	57.10	73.2	
30	10,380	75.00	10.9	Upper Marker

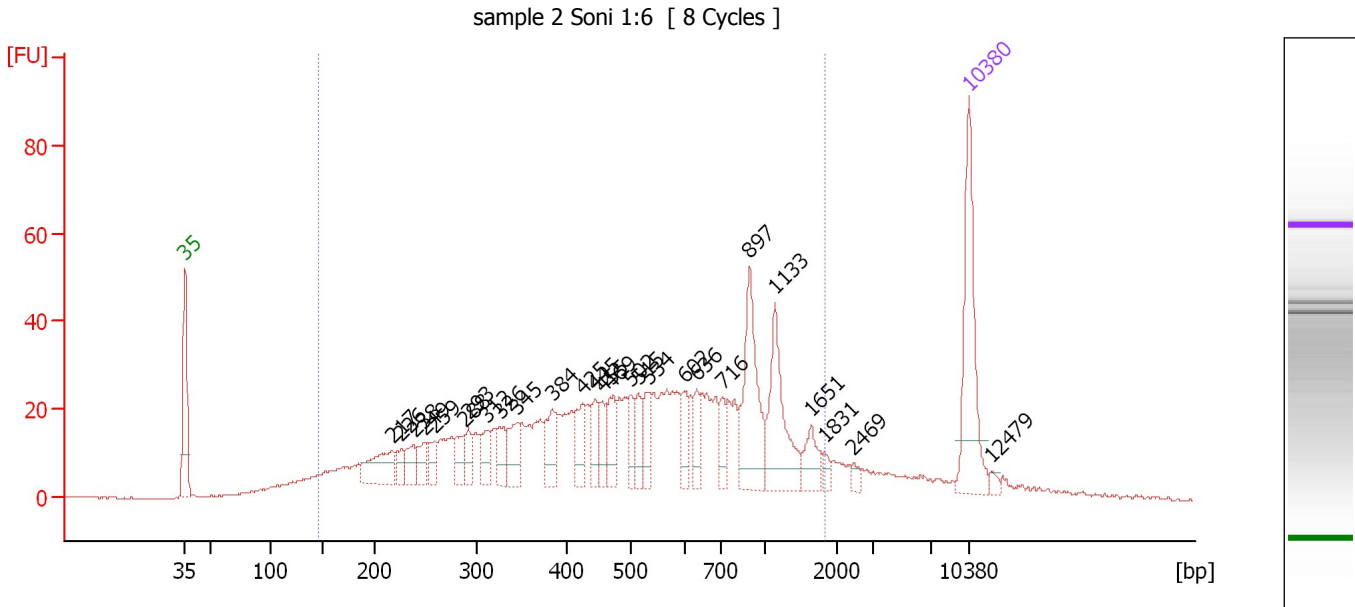
Region table for sample 9 : sample 25 Resoni 1:6

From [bp]	To [bp]	Average Size [bp]	Molarity [pmol/l]	Conc. [pg/μl]	Corr. Area	% of Total	Size distribution in CV [%]	Color
136	1,428	505	8,403.3	1,941.61	1,436.5	93	50.4	

Assay Class: High Sensitivity DNA Assay
 Data Path: C:\...ents and Settings\Bioanalyzer\2013-04-08\2013-04-08_003.xad

Created: 4/8/2013 4:11:20 PM
 Modified: 4/8/2013 4:56:59 PM

Electropherogram Summary Continued ...



Overall Results for sample 10 : sample 2 Soni 1:6

Number of peaks found: 27 Corr. Area 1: 1,023.9
 Noise: 0.2

Peak table for sample 10 : sample 2 Soni 1:6

Peak	Size [bp]	Conc. [pg/μl]	Molarity [pmol/l]	Observations
1	35	125.00	5,411.3	Lower Marker
2	217	49.12	342.3	
3	226	13.05	87.3	
4	238	20.73	131.7	
5	249	19.87	120.9	
6	259	17.34	101.5	
7	288	20.68	108.7	
8	293	16.13	83.5	
9	312	20.47	99.3	
10	326	22.57	104.8	
11	345	31.33	137.5	
12	384	35.03	138.4	
13	425	28.47	101.4	
14	445	21.13	71.9	
15	455	19.34	64.4	
16	469	28.97	93.7	
17	502	19.95	60.3	
18	515	21.26	62.6	
19	534	24.22	68.7	
20	602	19.56	49.2	
21	636	18.25	43.5	
22	716	18.16	38.4	
23	897	82.64	139.6	
24	1,133	68.39	91.4	
25	1,651	19.85	18.2	
26	1,831	5.91	4.9	

Assay Class: High Sensitivity DNA Assay
 Data Path: C:\...ents and Settings\Bioanalyzer\2013-04-08\2013-04-08_003.xad

Created: 4/8/2013 4:11:20 PM
 Modified: 4/8/2013 4:56:59 PM

Electropherogram Summary Continued ...

... Peak table for sample 10 : sample 2 Soni 1:6

Peak	Size [bp]	Conc. [pg/μl]	Molarity [pmol/l]	Observations
27	2,469	4.64	2.8	
28	10,380	75.00	10.9	Upper Marker
29	12,479	0.00	0.0	

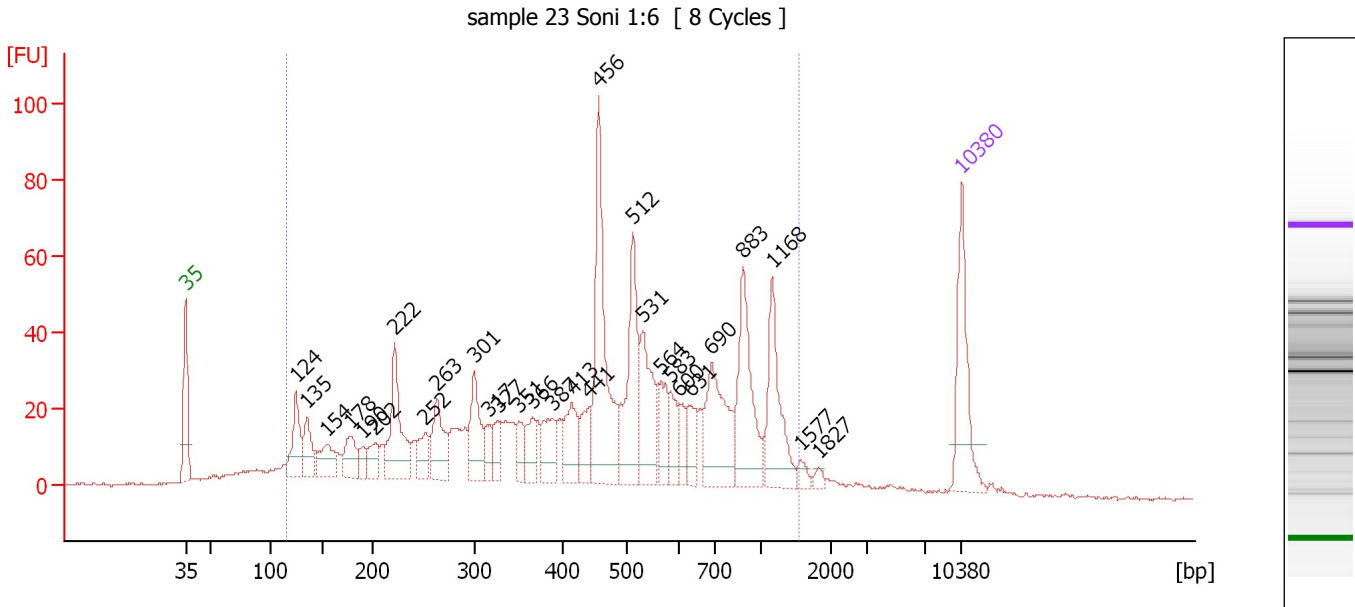
Region table for sample 10 : sample 2 Soni 1:6

From [bp]	To [bp]	Average Size [bp]	Molarity [pmol/l]	Conc. [pg/μl]	Corr. Area	% of Total	Size distribution in CV [%]	Color
145	1,850	590	5,285.3	1,322.90	1,023.9	89	59.1	■

Assay Class: High Sensitivity DNA Assay
 Data Path: C:\...ents and Settings\Bioanalyzer\2013-04-08\2013-04-08_003.xad

Created: 4/8/2013 4:11:20 PM
 Modified: 4/8/2013 4:56:59 PM

Electropherogram Summary Continued ...



Overall Results for sample 11 : sample 23 Soni 1:6

Number of peaks found: 29 Corr. Area 1: 1,329.3
 Noise: 0.3

Peak table for sample 11 : sample 23 Soni 1:6

Peak	Size [bp]	Conc. [pg/μl]	Molarity [pmol/l]	Observations
1	35	125.00	5,411.3	Lower Marker
2	124	67.68	825.1	
3	135	50.99	571.4	
4	154	46.56	456.6	
5	178	43.97	374.4	
6	190	17.26	137.3	
7	202	30.06	225.6	
8	222	108.59	742.8	
9	252	32.39	194.9	
10	263	65.30	375.6	
11	301	68.51	345.4	
12	317	22.65	108.2	
13	327	28.62	132.7	
14	351	25.26	109.2	
15	366	30.19	125.0	
16	387	43.41	169.8	
17	413	50.97	186.8	
18	441	37.31	128.1	
19	456	188.54	626.9	
20	512	122.07	361.5	
21	531	85.60	244.4	
22	564	38.38	103.1	
23	583	32.84	85.4	
24	600	20.04	50.6	
25	631	31.93	76.6	
26	690	104.42	229.4	

Assay Class: High Sensitivity DNA Assay
Data Path: C:\...ents and Settings\Bioanalyzer\2013-04-08\2013-04-08_003.xad


Created: 4/8/2013 4:11:20 PM
Modified: 4/8/2013 4:56:59 PM

Electropherogram Summary Continued ...

... Peak table for sample 11 : sample 23 Soni 1:6

Peak	Size [bp]	Conc. [pg/µl]	Molarity [pmol/l]	Observations
27	883	110.17	189.1	
28	1,168	83.23	108.0	
29	1,577	8.42	8.1	
30	1,827	5.69	4.7	
31	10,380	75.00	10.9	Upper Marker

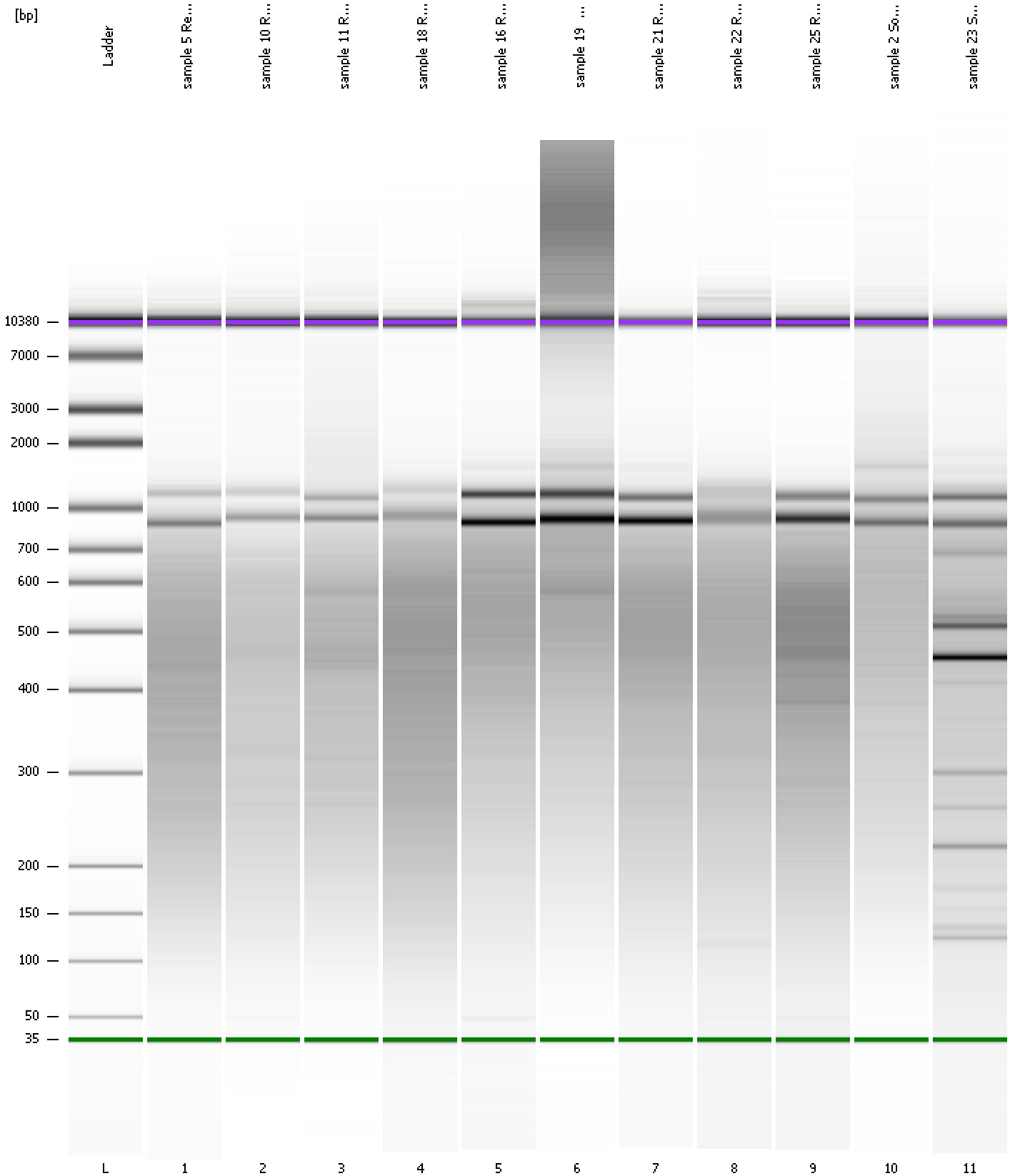
Region table for sample 11 : sample 23 Soni 1:6

From [bp]	To [bp]	Average Size [bp]	Molarity [pmol/l]	Conc. [pg/µl]	Corr. Area	% of Total	Size distribution in CV [%]	Color
116	1,547	518	9,769.2	2,049.27	1,329.3	92	55.6	

Assay Class: High Sensitivity DNA Assay
Data Path: C:\...ents and Settings\Bioanalyzer\2013-04-08\2013-04-08_003.xad

Created: 4/8/2013 4:11:20 PM
Modified: 4/8/2013 4:56:59 PM

Gel Image

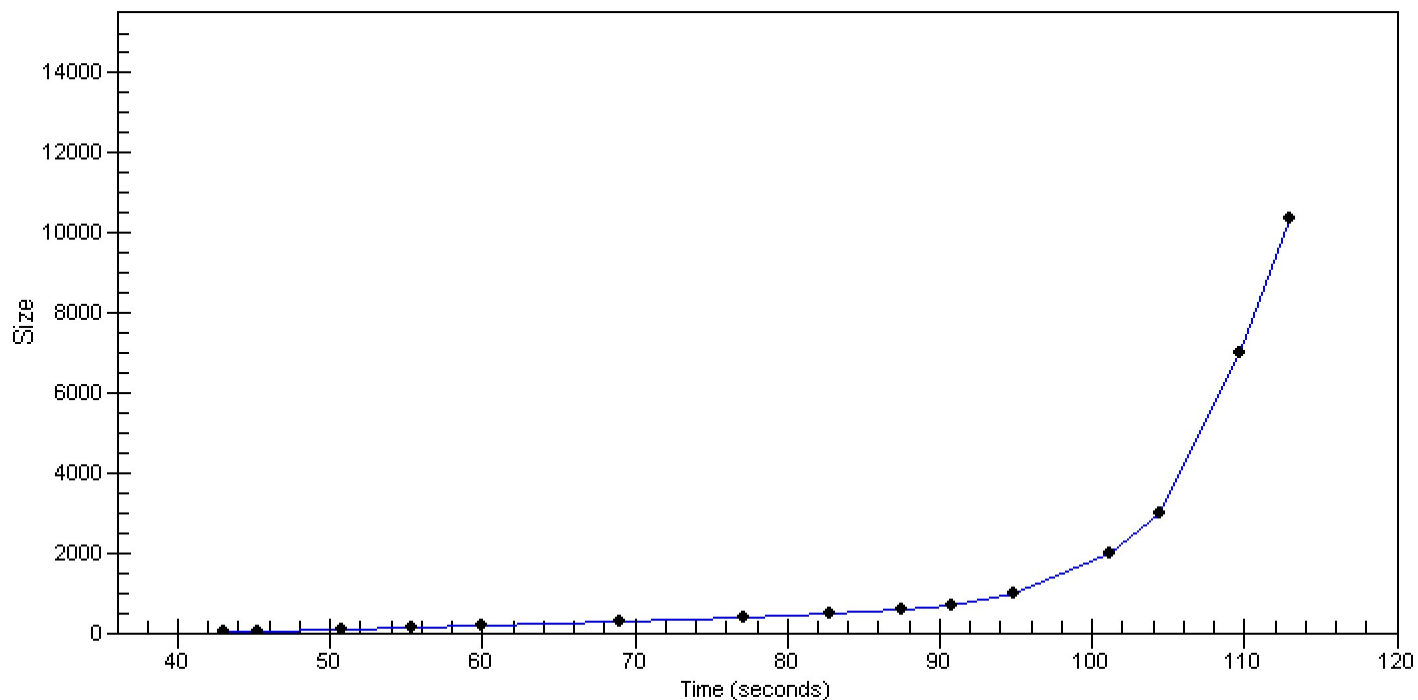


Assay Class: High Sensitivity DNA Assay
Data Path: C:\...ents and Settings\Bioanalyzer\2013-04-08\2013-04-08_003.xad

Created: 4/8/2013 4:11:20 PM
Modified: 4/8/2013 4:56:59 PM

Curves

Standard Curve



Assay Class: High Sensitivity DNA Assay
 Data Path: C:\...ents and Settings\Bioanalyzer\2013-04-08\2013-04-08_003.xad

Created: 4/8/2013 4:11:20 PM
 Modified: 4/8/2013 4:56:59 PM

Run Logbook

Description	Number	Source	Category	Sub Category	Time	Time Zone	User	Host
Run ended on port 1 (Number of wells acquired: 12)		Instrument	Run		4/8/2013 4:52:40 PM	(GMT --07:00) Pacific Standard Time	UC Davis	D8XSMGH1
Run started on port 1 (File: C:\Documents and Settings\Bioanalyzer\2013-04-08\2013-04-08_003.xad)		Instrument	Run		4/8/2013 4:11:25 PM	(GMT --07:00) Pacific Standard Time	UC Davis	D8XSMGH1
Product Number : G2938B		Instrument	Run		4/8/2013 4:11:25 PM	(GMT --07:00) Pacific Standard Time	UC Davis	D8XSMGH1
Name :		Instrument	Run		4/8/2013 4:11:25 PM	(GMT --07:00) Pacific Standard Time	UC Davis	D8XSMGH1
Vendor : Agilent Technologies		Instrument	Run		4/8/2013 4:11:25 PM	(GMT --07:00) Pacific Standard Time	UC Davis	D8XSMGH1
Serial# : DE13701086		Instrument	Run		4/8/2013 4:11:25 PM	(GMT --07:00) Pacific Standard Time	UC Davis	D8XSMGH1
Firmware : C.01.069		Instrument	Run		4/8/2013 4:11:25 PM	(GMT --07:00) Pacific Standard Time	UC Davis	D8XSMGH1
Cartridge : Electrode		Instrument	Run		4/8/2013 4:11:25 PM	(GMT --07:00) Pacific Standard Time	UC Davis	D8XSMGH1