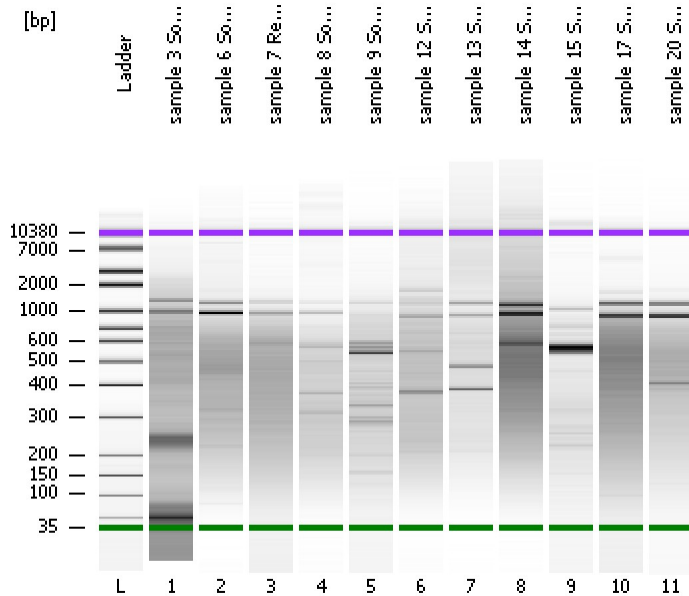


Assay Class: High Sensitivity DNA Assay  
Data Path: C:\...ents and Settings\Bioanalyzer\2013-04-09\2013-04-09\_001.xad

Created: 4/9/2013 10:14:04 AM  
Modified: 4/9/2013 10:57:32 AM

**Electrophoresis File Run Summary**



Instrument Information:

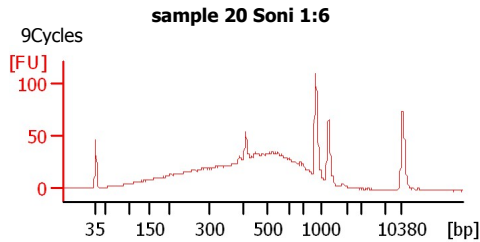
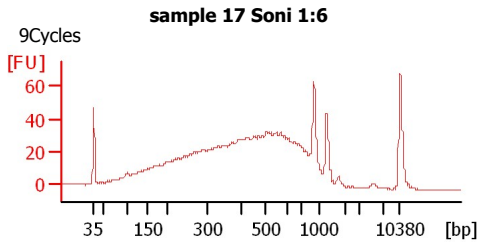
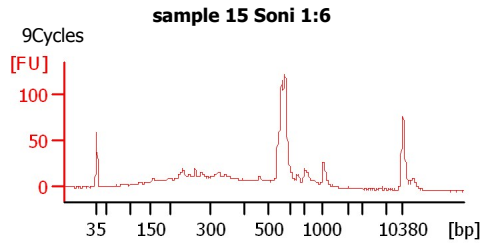
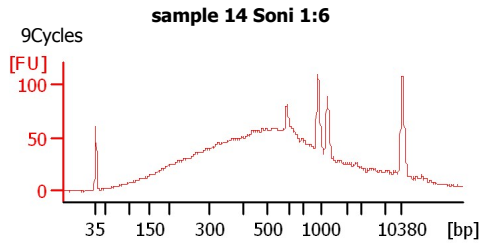
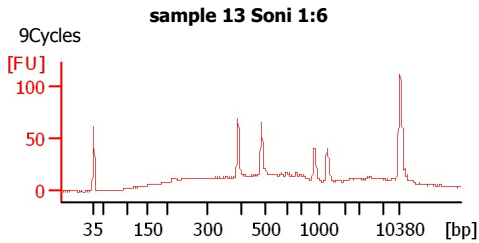
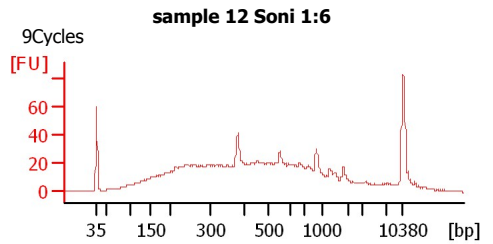
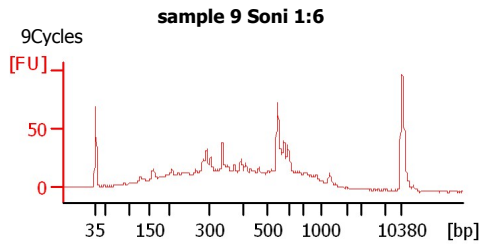
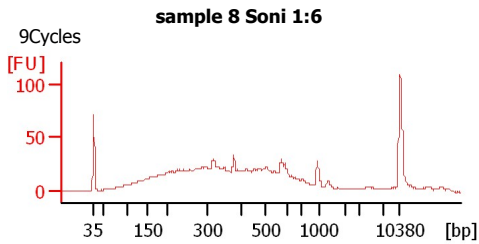
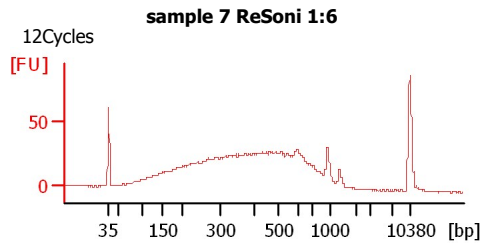
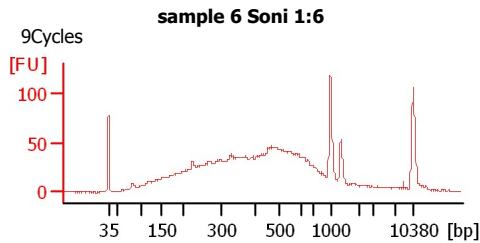
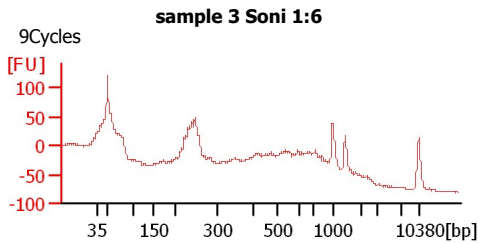
Instrument Name: DE13701086      Firmware: C.01.069  
Serial#: DE13701086      Type: G2938B

Assay Information:

Assay Origin Path: C:\Program Files\Agilent\2100 bioanalyzer\2100 expert\assays\dsDNA\High Sensitivity DNA.xsy  
Assay Class: High Sensitivity DNA Assay  
Version: 1.03  
Assay Comments: Copyright © 2003-2010 Agilent Technologies

Chip Information:

Chip Lot #:   
Reagent Kit Lot #:   
Chip Comments:



Assay Class: High Sensitivity DNA Assay  
Data Path: C:\...ents and Settings\Bioanalyzer\2013-04-09\2013-04-09\_001.xad

Created: 4/9/2013 10:14:04 AM  
Modified: 4/9/2013 10:57:32 AM

**Electrophoresis File Run Summary (Chip Summary)**

Sample Name	Sample Comment	Rest. Digest	Status	Observation	Result Label	Result Color
sample 3 Soni 1:6	9Cycles	<input type="checkbox"/>	✓			
sample 6 Soni 1:6	9Cycles	<input type="checkbox"/>	✓			
sample 7 ReSoni 1:6	12Cycles	<input type="checkbox"/>	✓			
sample 8 Soni 1:6	9Cycles	<input type="checkbox"/>	✓			
sample 9 Soni 1:6	9Cycles	<input type="checkbox"/>	✓			
sample 12 Soni 1:6	9Cycles	<input type="checkbox"/>	✓			
sample 13 Soni 1:6	9Cycles	<input type="checkbox"/>	✓			
sample 14 Soni 1:6	9Cycles	<input type="checkbox"/>	✓			
sample 15 Soni 1:6	9Cycles	<input type="checkbox"/>	✓			
sample 17 Soni 1:6	9Cycles	<input type="checkbox"/>	✓			
sample 20 Soni 1:6	9Cycles	<input type="checkbox"/>	✓			
Ladder		<input type="checkbox"/>	✓			

**Chip Lot #**

**Reagent Kit Lot #**

**Chip Comments :**

Assay Class: High Sensitivity DNA Assay  
Data Path: C:\...ents and Settings\Bioanalyzer\2013-04-09\2013-04-09\_001.xad

Created: 4/9/2013 10:14:04 AM  
Modified: 4/9/2013 10:57:32 AM

**Electrophoresis Assay Details**

**General Analysis Settings**

Number of Available Sample and Ladder Wells (Max.) : 12  
Minimum Visible Range [s] : 32  
Maximum Visible Range [s] : 138  
Start Analysis Time Range [s] : 33  
End Analysis Time Range [s] : 137.5  
Ladder Concentration [pg/μl] : 1950  
Uses Standard Area for Ladder Fragments  
Lower Marker Concentration [pg/μl] : 125  
Upper Marker Concentration [pg/μl] : 75  
Used Upper Marker for Quantitation  
Standard Curve Fit is Point to Point  
Show Data Aligned to Lower and Upper Marker

**Integrator Settings**

Integration Start Time [s] : 33.05  
Integration End Time [s] : 137  
Slope Threshold : 0.8  
Height Threshold [FU] : 5  
Area Threshold : 0.1  
Width Threshold [s] : 0.6  
Baseline Plateau [s] : 0.5

**Filter Settings**

Filter Width [s] : 0.5  
Polynomial Order : 4

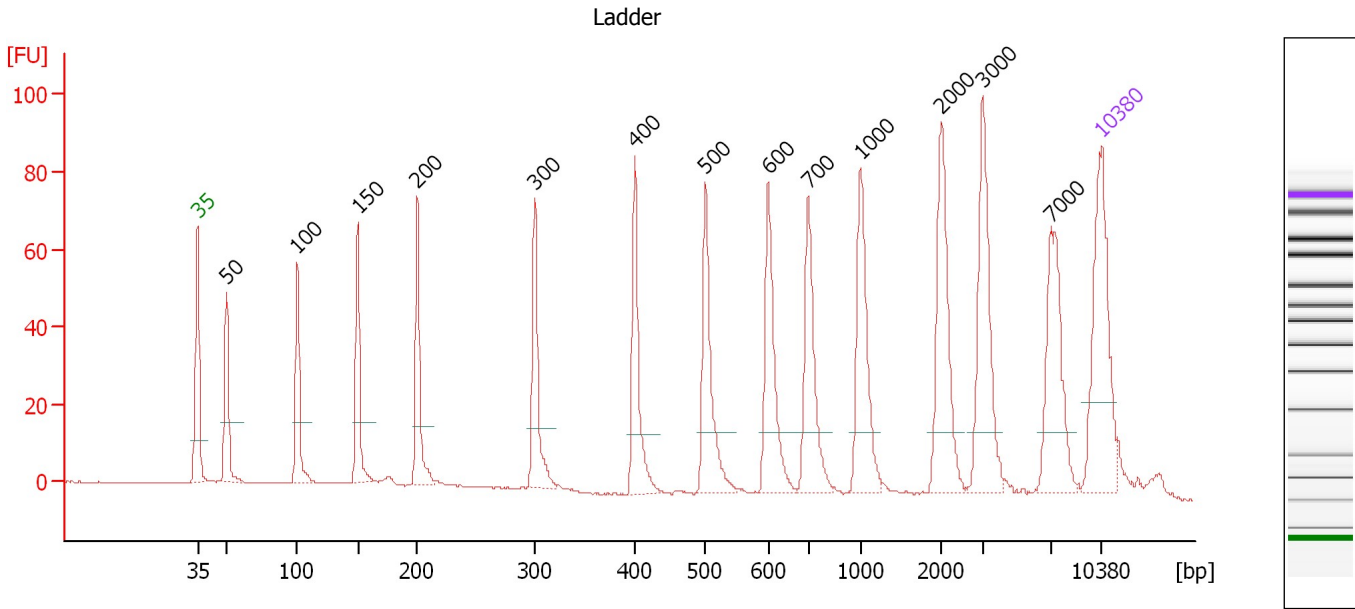
**Ladder**

Ladder Peak	Size	Area
1	35	160
2	50	210
3	100	208
4	150	221
5	200	242
6	300	270
7	400	305
8	500	306
9	600	336
10	700	321
11	1000	366
12	2000	413
13	3000	411
14	7000	400
15	10380	214

Assay Class: High Sensitivity DNA Assay  
 Data Path: C:\...ents and Settings\Bioanalyzer\2013-04-09\2013-04-09\_001.xad

Created: 4/9/2013 10:14:04 AM  
 Modified: 4/9/2013 10:57:32 AM

**Electropherogram Summary**



**Overall Results for Ladder**

Noise: 0.2

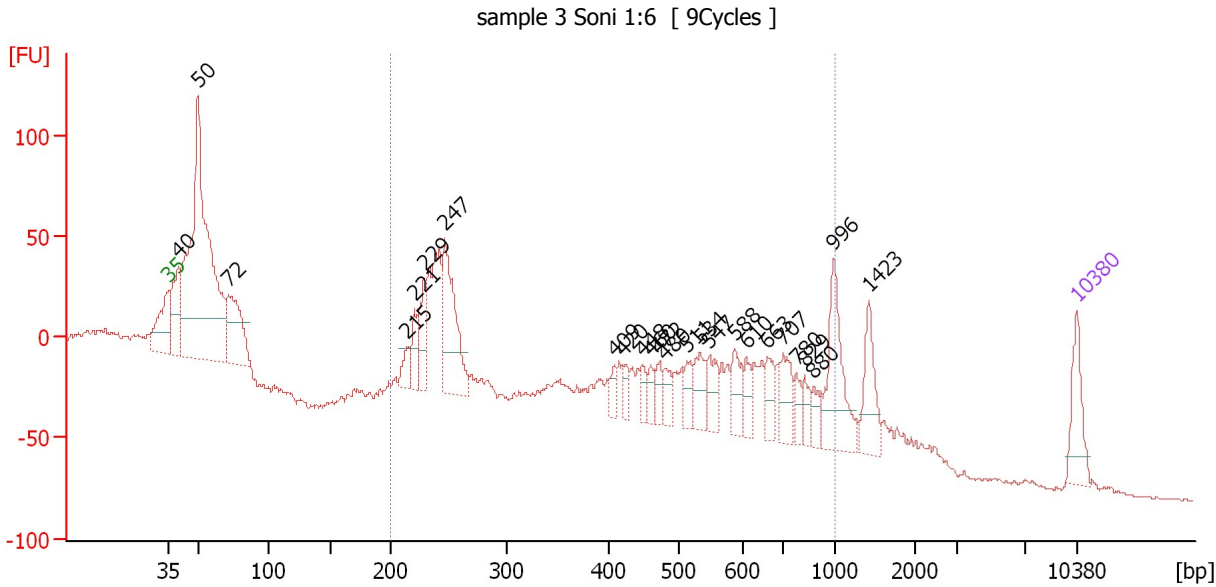
**Peak table for Ladder**

Peak	Size [bp]	Conc. [pg/μl]	Molarity [pmol/l]	Observations
1	35	125.00	5,411.3	Lower Marker
2	50	150.00	4,545.5	Ladder Peak
3	100	150.00	2,272.7	Ladder Peak
4	150	150.00	1,515.2	Ladder Peak
5	200	150.00	1,136.4	Ladder Peak
6	300	150.00	757.6	Ladder Peak
7	400	150.00	568.2	Ladder Peak
8	500	150.00	454.5	Ladder Peak
9	600	150.00	378.8	Ladder Peak
10	700	150.00	324.7	Ladder Peak
11	1,000	150.00	227.3	Ladder Peak
12	2,000	150.00	113.6	Ladder Peak
13	3,000	150.00	75.8	Ladder Peak
14	7,000	150.00	32.5	Ladder Peak
15	10,380	75.00	10.9	Upper Marker

Assay Class: High Sensitivity DNA Assay  
 Data Path: C:\...ents and Settings\Bioanalyzer\2013-04-09\2013-04-09\_001.xad

Created: 4/9/2013 10:14:04 AM  
 Modified: 4/9/2013 10:57:32 AM

**Electropherogram Summary Continued ...**



**Setpoint Deviations for sample 1 : sample 3 Soni 1:6**

Height Threshold [FU] : 20

**Overall Results for sample 1 : sample 3 Soni 1:6**

Number of peaks found: 25                      Corr. Area 1: 1,242.8  
 Noise: 0.7

**Peak table for sample 1 : sample 3 Soni 1:6**

Peak	Size [bp]	Conc. [pg/μl]	Molarity [pmol/l]	Observations
1	35	125.00	5,411.3	Lower Marker
2	40	201.26	7,682.3	
3	50	1,201.51	36,473.4	
4	72	249.90	5,291.3	
5	215	42.02	295.9	
6	221	58.80	403.0	
7	229	109.98	727.1	
8	247	275.60	1,692.0	
9	409	26.49	98.1	
10	420	32.45	117.0	
11	448	31.39	106.2	
12	460	29.25	96.4	
13	472	38.07	122.2	
14	480	40.80	128.8	
15	511	46.09	136.6	
16	534	65.95	187.0	
17	547	62.91	174.2	
18	588	61.33	158.1	
19	610	40.55	100.7	
20	663	57.31	130.9	
21	707	72.33	155.0	
22	780	32.64	63.4	

Assay Class: High Sensitivity DNA Assay  
Data Path: C:\...ents and Settings\Bioanalyzer\2013-04-09\2013-04-09\_001.xad


Created: 4/9/2013 10:14:04 AM  
Modified: 4/9/2013 10:57:32 AM

**Electropherogram Summary Continued ...**

**... Peak table for sample 1 : sample 3 Soni 1:6**

Peak	Size [bp]	Conc. [pg/µl]	Molarity [pmol/l]	Observations
23	829	33.14	60.6	
24	880	32.75	56.4	
25	996	170.69	259.7	
26	1,423	92.50	98.5	
27	10,380	75.00	10.9	Upper Marker

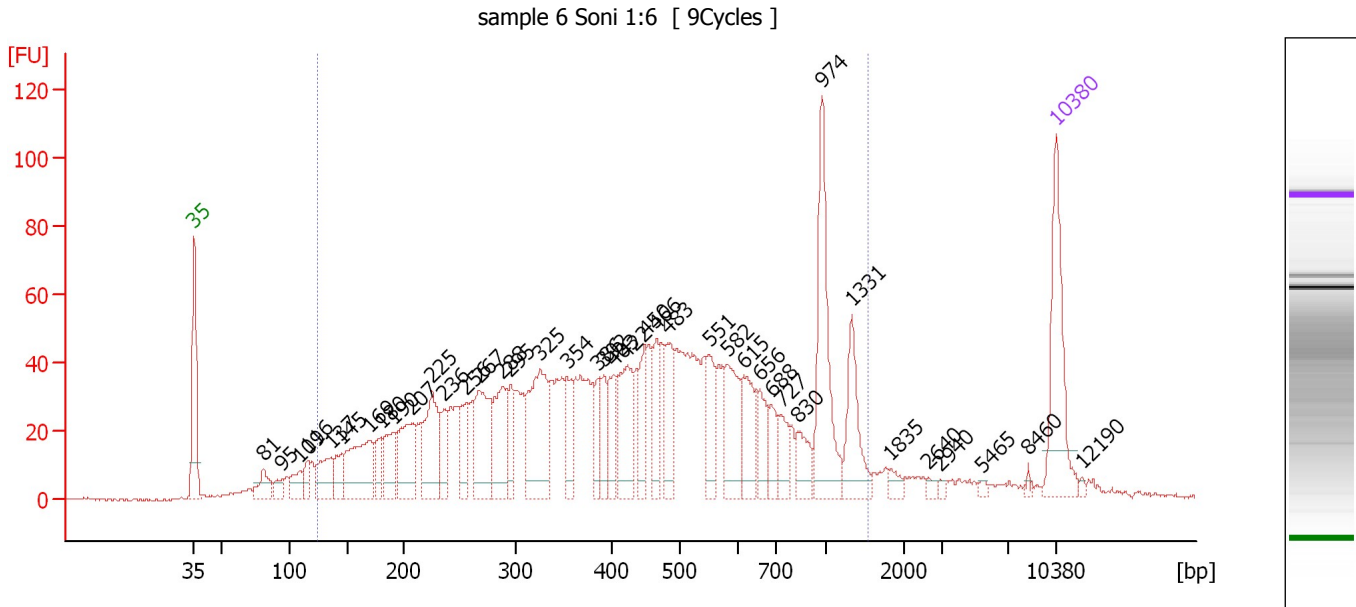
**Region table for sample 1 : sample 3 Soni 1:6**

From [bp]	To [bp]	Average Size [bp]	Molarity [pmol/l]	Conc. [pg/µl]	Corr. Area	% of Total	Size distribution in CV [%]	Color
200	1,000	501	7,940.7	1,896.08	1,242.8	55	43.5	

Assay Class: High Sensitivity DNA Assay  
 Data Path: C:\...ents and Settings\Bioanalyzer\2013-04-09\2013-04-09\_001.xad

Created: 4/9/2013 10:14:04 AM  
 Modified: 4/9/2013 10:57:32 AM

**Electropherogram Summary Continued ...**



**Overall Results for sample 2 : sample 6 Soni 1:6**

Number of peaks found: 40                      Corr. Area 1: 1,926.2  
 Noise: 0.5

**Peak table for sample 2 : sample 6 Soni 1:6**

Peak	Size [bp]	Conc. [pg/μl]	Molarity [pmol/l]	Observations
1	35	125.00	5,411.3	Lower Marker
2	81	31.07	584.4	
3	95	14.68	234.7	
4	109	25.04	347.7	
5	116	19.43	254.5	
6	137	46.43	515.2	
7	145	27.06	282.1	
8	169	97.28	871.2	
9	180	24.76	208.4	
10	190	46.32	368.9	
11	207	70.54	516.9	
12	225	88.12	592.5	
13	236	31.22	200.2	
14	256	41.35	244.9	
15	267	92.70	525.4	
16	288	68.23	358.6	
17	295	33.61	172.4	
18	325	112.60	524.4	
19	354	36.47	156.2	
20	386	29.02	113.8	
21	392	31.48	121.8	
22	403	37.69	141.6	
23	422	69.01	247.6	
24	450	39.71	133.7	
25	466	37.68	122.4	
26	483	47.22	148.1	

Assay Class: High Sensitivity DNA Assay  
 Data Path: C:\...ents and Settings\Bioanalyzer\2013-04-09\2013-04-09\_001.xad


Created: 4/9/2013 10:14:04 AM  
 Modified: 4/9/2013 10:57:32 AM

**Electropherogram Summary Continued ...**

**... Peak table for sample 2 : sample 6 Soni 1:6**

Peak	Size [bp]	Conc. [pg/μl]	Molarity [pmol/l]	Observations
27	551	39.14	107.7	
28	582	58.81	153.1	
29	615	45.97	113.2	
30	656	27.70	64.0	
31	688	22.10	48.7	
32	727	23.86	49.7	
33	830	25.06	45.8	
34	974	109.40	170.2	
35	1,331	50.14	57.1	
36	1,835	6.93	5.7	
37	2,640	3.80	2.2	
38	2,940	3.06	1.6	
39	5,465	2.83	0.8	
40	8,460	2.38	0.4	
41	10,380	75.00	10.9	Upper Marker
42	12,190	0.00	0.0	

**Region table for sample 2 : sample 6 Soni 1:6**

From [bp]	To [bp]	Average Size [bp]	Molarity [pmol/l]	Conc. [pg/μl]	Corr. Area	% of Total	Size distribution in CV [%]	Color
125	1,547	496	9,907.6	2,115.62	1,926.2	91	57.2	

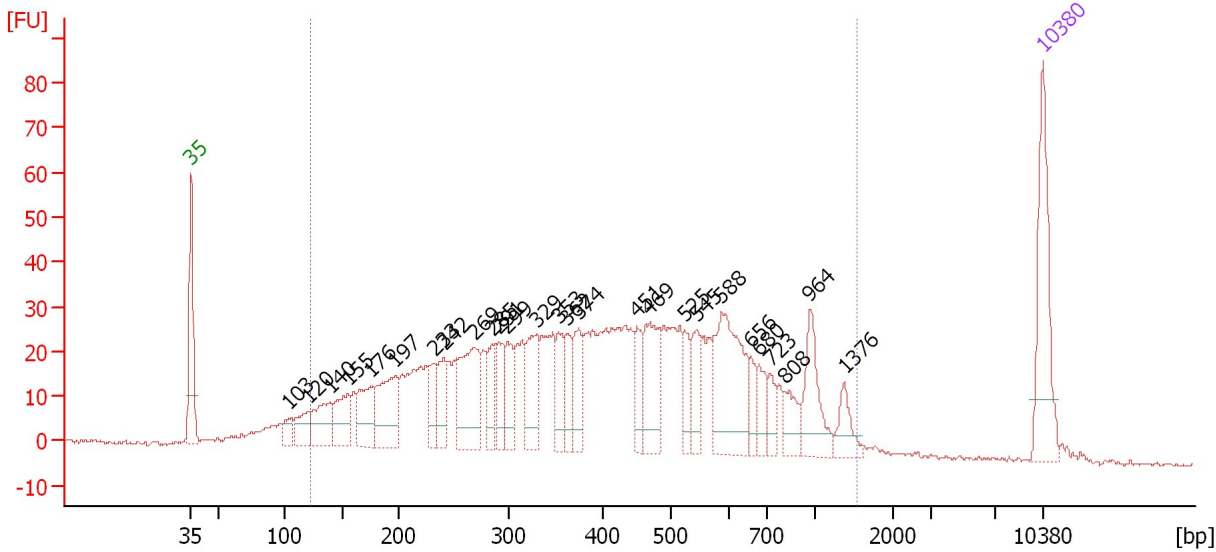


Assay Class: High Sensitivity DNA Assay  
 Data Path: C:\...ents and Settings\Bioanalyzer\2013-04-09\2013-04-09\_001.xad

Created: 4/9/2013 10:14:04 AM  
 Modified: 4/9/2013 10:57:32 AM

**Electropherogram Summary Continued ...**

sample 7 ReSoni 1:6 [ 12Cycles ]



**Overall Results for sample 3 : sample 7 ReSoni 1:6**

Number of peaks found: 27                      Corr. Area 1: 1,344.4  
 Noise: 0.4

**Peak table for sample 3 : sample 7 ReSoni 1:6**

Peak	Size [bp]	Conc. [pg/μl]	Molarity [pmol/l]	Observations
1	35	125.00	5,411.3	Lower Marker
2	103	19.81	290.9	
3	120	34.64	438.7	
4	140	56.37	610.8	
5	155	53.66	523.2	
6	176	57.43	495.1	
7	197	88.49	682.0	
8	233	28.73	186.7	
9	242	42.81	268.2	
10	269	98.76	556.4	
11	285	37.71	200.3	
12	291	40.90	212.9	
13	299	37.56	190.5	
14	329	60.67	279.3	
15	353	38.47	165.2	
16	362	31.02	129.7	
17	374	42.03	170.4	
18	451	31.11	104.6	
19	469	67.36	217.6	
20	525	24.37	70.4	
21	545	34.69	96.5	
22	588	117.82	303.5	
23	656	18.31	42.3	
24	680	23.81	53.0	
25	723	18.03	37.8	
26	808	24.93	46.7	

Assay Class: High Sensitivity DNA Assay  
 Data Path: C:\...ents and Settings\Bioanalyzer\2013-04-09\2013-04-09\_001.xad

Created: 4/9/2013 10:14:04 AM  
 Modified: 4/9/2013 10:57:32 AM

### Electropherogram Summary Continued ...

#### ... Peak table for sample 3 : sample 7 ReSoni 1:6

Peak	Size [bp]	Conc. [pg/μl]	Molarity [pmol/l]	Observations
27	964	52.33	82.3	
28	1,376	22.20	24.4	
29	10,380	75.00	10.9	Upper Marker

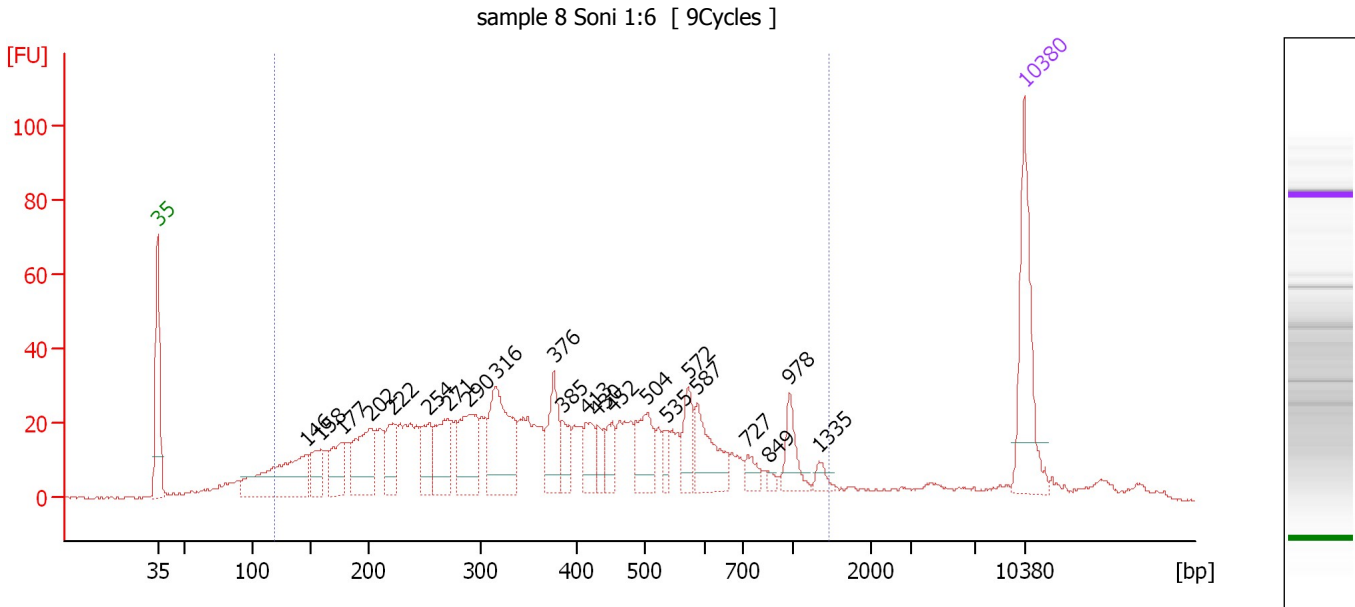
#### Region table for sample 3 : sample 7 ReSoni 1:6

From [bp]	To [bp]	Average Size [bp]	Molarity [pmol/l]	Conc. [pg/μl]	Corr. Area	% of Total	Size distribution in CV [%]	Color
122	1,541	452	9,251.4	1,876.79	1,344.4	93	54.1	■

Assay Class: High Sensitivity DNA Assay  
 Data Path: C:\...ents and Settings\Bioanalyzer\2013-04-09\2013-04-09\_001.xad

Created: 4/9/2013 10:14:04 AM  
 Modified: 4/9/2013 10:57:32 AM

**Electropherogram Summary Continued ...**



**Overall Results for sample 4 : sample 8 Soni 1:6**

Number of peaks found: 22                      Corr. Area 1: 1,129.2  
 Noise: 0.4

**Peak table for sample 4 : sample 8 Soni 1:6**

Peak	Size [bp]	Conc. [pg/μl]	Molarity [pmol/l]	Observations
1	35	125.00	5,411.3	Lower Marker
2	146	124.31	1,293.6	
3	158	35.99	345.0	
4	177	43.76	374.9	
5	202	74.38	556.8	
6	222	39.75	270.7	
7	254	41.82	249.1	
8	271	57.09	319.2	
9	290	69.47	363.4	
10	316	102.67	492.3	
11	376	50.04	201.6	
12	385	21.40	84.3	
13	413	28.92	106.0	
14	430	15.76	55.5	
15	452	21.67	72.6	
16	504	45.87	137.9	
17	535	12.48	35.3	
18	572	28.99	76.8	
19	587	50.96	131.6	
20	727	12.13	25.3	
21	849	4.21	7.5	
22	978	25.36	39.3	
23	1,335	7.48	8.5	
24	10,380	75.00	10.9	Upper Marker

Assay Class: High Sensitivity DNA Assay  
Data Path: C:\...ents and Settings\Bioanalyzer\2013-04-09\2013-04-09\_001.xad

Created: 4/9/2013 10:14:04 AM  
Modified: 4/9/2013 10:57:32 AM

**Electropherogram Summary Continued ...**

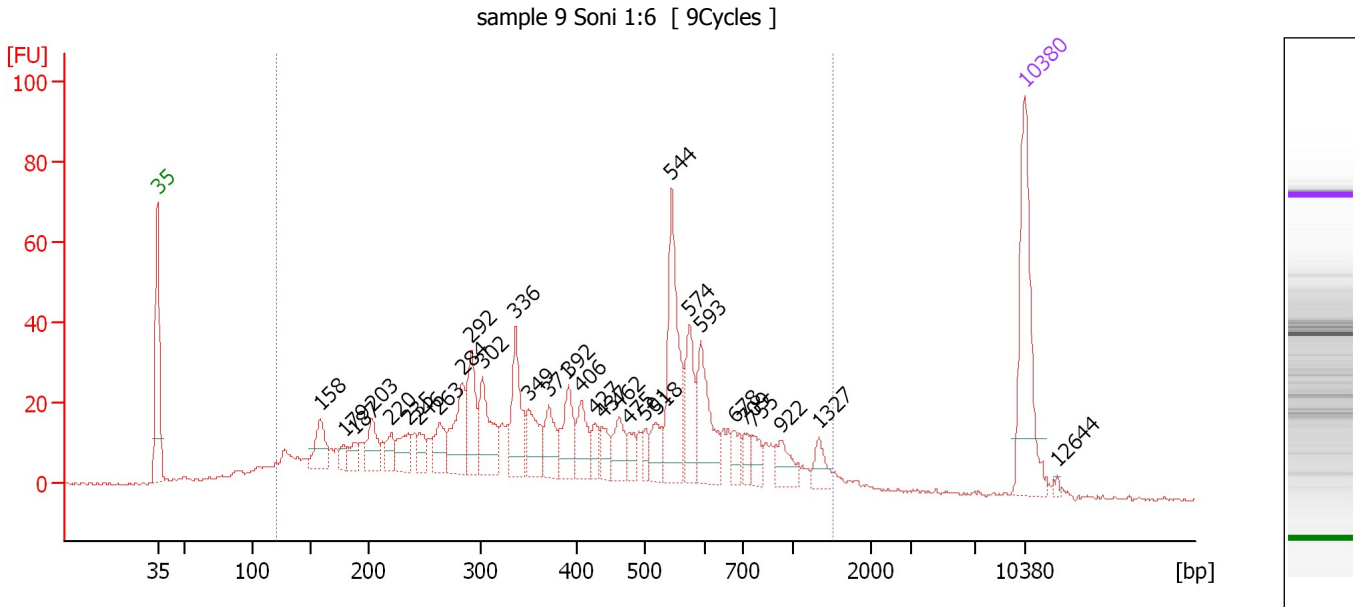
... Region table for sample 4 : sample 8 Soni 1:6

From [bp]	To [bp]	Average Size [bp]	Molarity [pmol/l]	Conc. [pg/μl]	Corr. Area	% of Total	Size distribution in CV [%]	Color
118	1,457	415	7,153.5	1,336.28	1,129.2	89	55.3	■

Assay Class: High Sensitivity DNA Assay  
 Data Path: C:\...ents and Settings\Bioanalyzer\2013-04-09\2013-04-09\_001.xad

Created: 4/9/2013 10:14:04 AM  
 Modified: 4/9/2013 10:57:32 AM

**Electropherogram Summary Continued ...**



**Overall Results for sample 5 : sample 9 Soni 1:6**

Number of peaks found: 31                      Corr. Area 1: 1,047.8  
 Noise: 0.3

**Peak table for sample 5 : sample 9 Soni 1:6**

Peak	Size [bp]	Conc. [pg/μl]	Molarity [pmol/l]	Observations
1	35	125.00	5,411.3	Lower Marker
2	158	35.71	342.1	
3	179	9.62	81.6	
4	187	15.42	124.7	
5	203	29.61	220.5	
6	220	16.22	111.6	
7	235	25.33	163.2	
8	246	16.84	103.9	
9	263	27.67	159.1	
10	284	48.89	261.1	
11	292	47.79	248.2	
12	302	52.82	265.1	
13	336	53.44	240.9	
14	349	32.90	142.7	
15	371	28.21	115.3	
16	392	36.24	140.2	
17	406	27.99	104.4	
18	427	14.30	50.8	
19	437	14.88	51.6	
20	462	23.47	77.0	
21	475	12.24	39.0	
22	501	10.52	31.8	
23	518	19.75	57.7	
24	544	91.66	255.1	
25	574	39.57	104.4	
26	593	52.51	134.2	

Assay Class: High Sensitivity DNA Assay  
 Data Path: C:\...ents and Settings\Bioanalyzer\2013-04-09\2013-04-09\_001.xad


Created: 4/9/2013 10:14:04 AM  
 Modified: 4/9/2013 10:57:32 AM

**Electropherogram Summary Continued ...**

**... Peak table for sample 5 : sample 9 Soni 1:6**

Peak	Size [bp]	Conc. [pg/μl]	Molarity [pmol/l]	Observations
27	678	12.89	28.8	
28	709	10.51	22.5	
29	755	13.15	26.4	
30	922	19.34	31.8	
31	1,327	13.05	14.9	
32	10,380	75.00	10.9	Upper Marker
33	12,644	0.00	0.0	

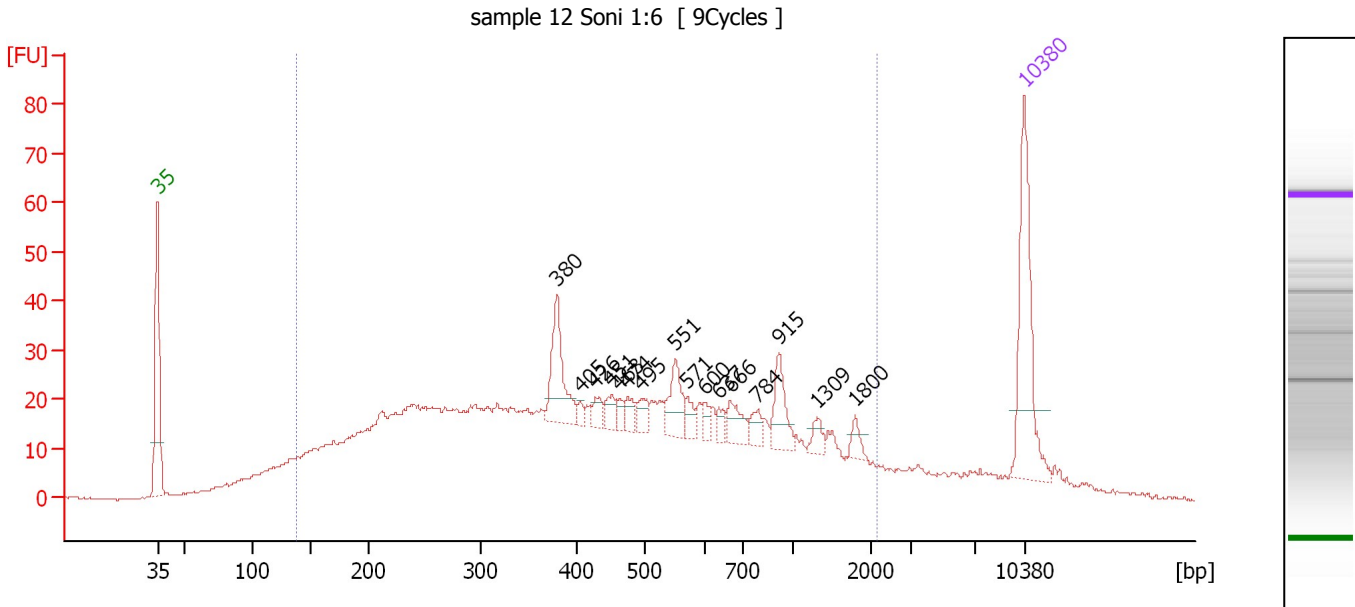
**Region table for sample 5 : sample 9 Soni 1:6**

From [bp]	To [bp]	Average Size [bp]	Molarity [pmol/l]	Conc. [pg/μl]	Corr. Area	% of Total	Size distribution in CV [%]	Color
120	1,510	453	6,247.2	1,265.91	1,047.8	92	52.9	

Assay Class: High Sensitivity DNA Assay  
 Data Path: C:\...ents and Settings\Bioanalyzer\2013-04-09\2013-04-09\_001.xad

Created: 4/9/2013 10:14:04 AM  
 Modified: 4/9/2013 10:57:32 AM

**Electropherogram Summary Continued ...**



**Overall Results for sample 6 : sample 12 Soni 1:6**

Number of peaks found: 16                      Corr. Area 1: 1,110.6  
 Noise: 0.2

**Peak table for sample 6 : sample 12 Soni 1:6**

Peak	Size [bp]	Conc. [pg/μl]	Molarity [pmol/l]	Observations
1	35	125.00	5,411.3	Lower Marker
2	380	55.70	222.3	
3	405	4.89	18.3	
4	426	9.70	34.5	
5	451	11.41	38.3	
6	463	7.20	23.6	
7	474	10.41	33.2	
8	495	11.67	35.7	
9	551	29.75	81.9	
10	571	9.43	25.0	
11	600	6.58	16.6	
12	637	7.51	17.9	
13	666	18.33	41.7	
14	784	10.70	20.7	
15	915	27.32	45.2	
16	1,309	8.48	9.8	
17	1,800	7.33	6.2	
18	10,380	75.00	10.9	Upper Marker

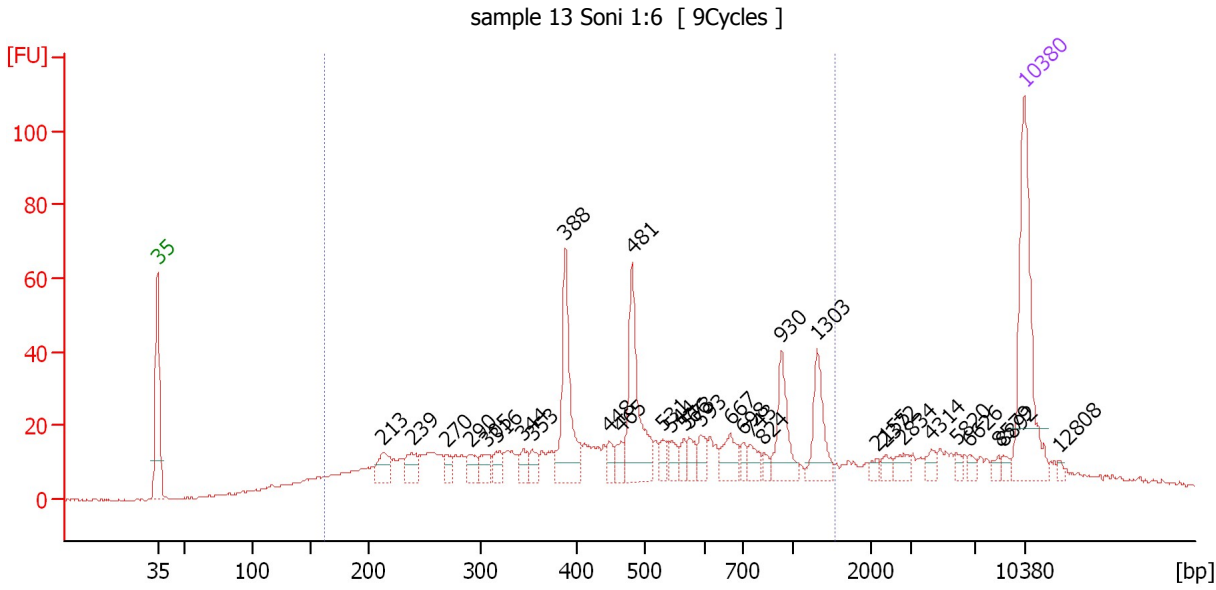
**Region table for sample 6 : sample 12 Soni 1:6**

From [bp]	To [bp]	Average Size [bp]	Molarity [pmol/l]	Conc. [pg/μl]	Corr. Area	% of Total	Size distribution in CV [%]	Color
137	2,135	534	7,706.7	1,648.78	1,110.6	88	71.2	Blue

Assay Class: High Sensitivity DNA Assay  
Data Path: C:\...ents and Settings\Bioanalyzer\2013-04-09\2013-04-09\_001.xad

Created: 4/9/2013 10:14:04 AM  
Modified: 4/9/2013 10:57:32 AM

Electropherogram Summary Continued ...



Overall Results for sample 7 : sample 13 Soni 1:6

Number of peaks found: 32                      Corr. Area 1: 750.5  
Noise: 0.3

Peak table for sample 7 : sample 13 Soni 1:6

Peak	Size [bp]	Conc. [pg/μl]	Molarity [pmol/l]	Observations
1	35	125.00	5,411.3	Lower Marker
2	213	20.31	144.2	
3	239	18.06	114.4	
4	270	8.22	46.1	
5	290	13.12	68.5	
6	305	12.12	60.2	
7	316	11.71	56.2	
8	344	8.83	38.9	
9	353	9.24	39.7	
10	388	70.94	277.0	
11	448	8.23	27.8	
12	465	10.67	34.8	
13	481	72.45	228.3	
14	531	8.06	23.0	
15	544	9.77	27.2	
16	566	7.39	19.8	
17	573	10.54	27.9	
18	593	11.40	29.1	
19	667	18.35	41.7	
20	698	6.66	14.5	
21	743	10.53	21.5	
22	824	4.66	8.6	
23	930	33.17	54.1	
24	1,303	30.39	35.3	
25	2,155	3.61	2.5	
26	2,372	4.94	3.2	



Assay Class: High Sensitivity DNA Assay  
 Data Path: C:\...ents and Settings\Bioanalyzer\2013-04-09\2013-04-09\_001.xad

Created: 4/9/2013 10:14:04 AM  
 Modified: 4/9/2013 10:57:32 AM

### Electropherogram Summary Continued ...

#### ... Peak table for sample 7 : sample 13 Soni 1:6

Peak	Size [bp]	Conc. [pg/μl]	Molarity [pmol/l]	Observations
27	2,834	6.82	3.6	
28	4,314	5.65	2.0	
29	5,820	3.40	0.9	
30	6,626	3.31	0.8	
31	8,579	3.00	0.5	
32	8,892	3.46	0.6	
33	10,380	75.00	10.9	Upper Marker
34	12,808	0.00	0.0	

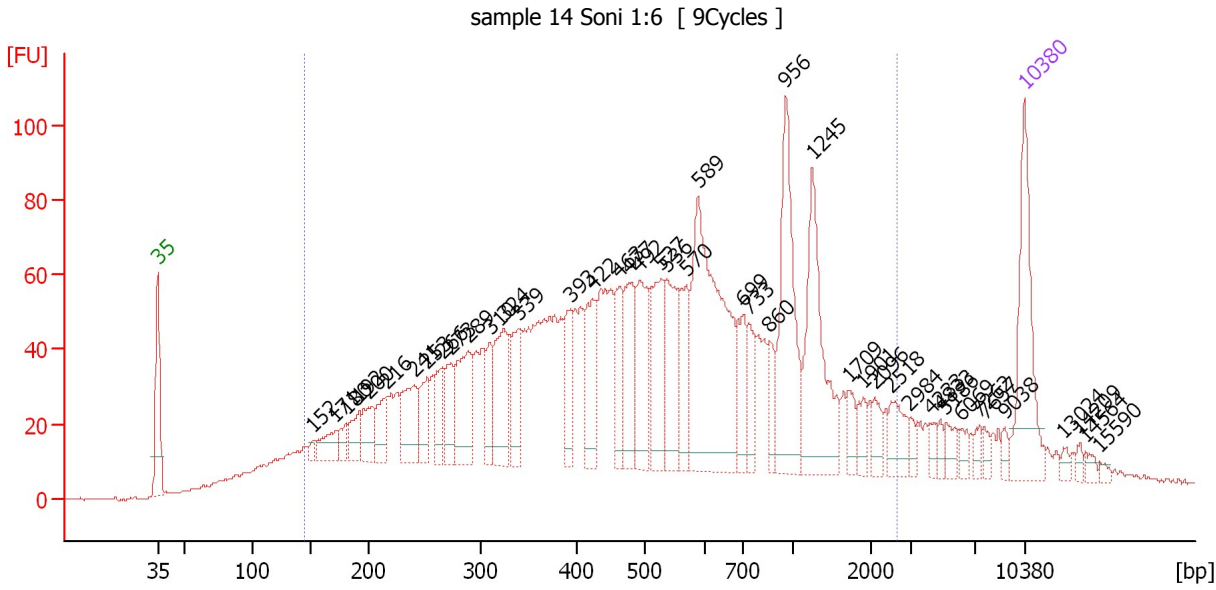
#### Region table for sample 7 : sample 13 Soni 1:6

From [bp]	To [bp]	Average Size [bp]	Molarity [pmol/l]	Conc. [pg/μl]	Corr. Area	% of Total	Size distribution in CV [%]	Color
161	1,543	535	3,279.0	789.52	750.5	79	57.0	

Assay Class: High Sensitivity DNA Assay  
Data Path: C:\...ents and Settings\Bioanalyzer\2013-04-09\2013-04-09\_001.xad

Created: 4/9/2013 10:14:04 AM  
Modified: 4/9/2013 10:57:32 AM

Electropherogram Summary Continued ...



Overall Results for sample 8 : sample 14 Soni 1:6

Number of peaks found: 44                      Corr. Area 1: 2,575.7  
Noise: 0.4

Peak table for sample 8 : sample 14 Soni 1:6

Peak	Size [bp]	Conc. [pg/µl]	Molarity [pmol/l]	Observations
1	35	125.00	5,411.3	Lower Marker
2	152	7.26	72.3	
3	171	28.48	252.1	
4	180	15.72	132.2	
5	192	28.19	222.2	
6	200	33.44	253.0	
7	216	33.54	235.3	
8	241	56.65	356.2	
9	253	34.76	208.4	
10	266	32.39	184.5	
11	273	35.86	198.9	
12	289	72.16	377.8	
13	310	32.21	157.6	
14	324	70.33	328.9	
15	339	46.79	209.2	
16	393	37.19	143.5	
17	422	60.04	215.4	
18	463	40.41	132.3	
19	477	61.31	194.7	
20	492	69.62	214.3	
21	527	70.02	201.4	
22	536	65.53	185.1	
23	570	46.02	122.4	
24	589	217.56	559.6	
25	699	35.04	75.9	
26	733	26.64	55.1	

Assay Class: High Sensitivity DNA Assay  
 Data Path: C:\...ents and Settings\Bioanalyzer\2013-04-09\2013-04-09\_001.xad


Created: 4/9/2013 10:14:04 AM  
 Modified: 4/9/2013 10:57:32 AM

**Electropherogram Summary Continued ...**

**... Peak table for sample 8 : sample 14 Soni 1:6**

Peak	Size [bp]	Conc. [pg/μl]	Molarity [pmol/l]	Observations
27	860	20.41	36.0	
28	956	116.93	185.3	
29	1,245	107.42	130.7	
30	1,709	14.30	12.7	
31	1,901	13.37	10.7	
32	2,096	12.85	9.3	
33	2,518	22.67	13.6	
34	2,984	7.22	3.7	
35	4,233	6.89	2.5	
36	4,833	6.32	2.0	
37	5,186	10.59	3.1	
38	6,069	8.05	2.0	
39	7,262	6.95	1.5	
40	7,657	5.94	1.2	
41	9,038	5.55	0.9	
42	10,380	75.00	10.9	Upper Marker
43	13,024	0.00	0.0	
44	14,209	0.00	0.0	
45	14,564	0.00	0.0	
46	15,590	0.00	0.0	

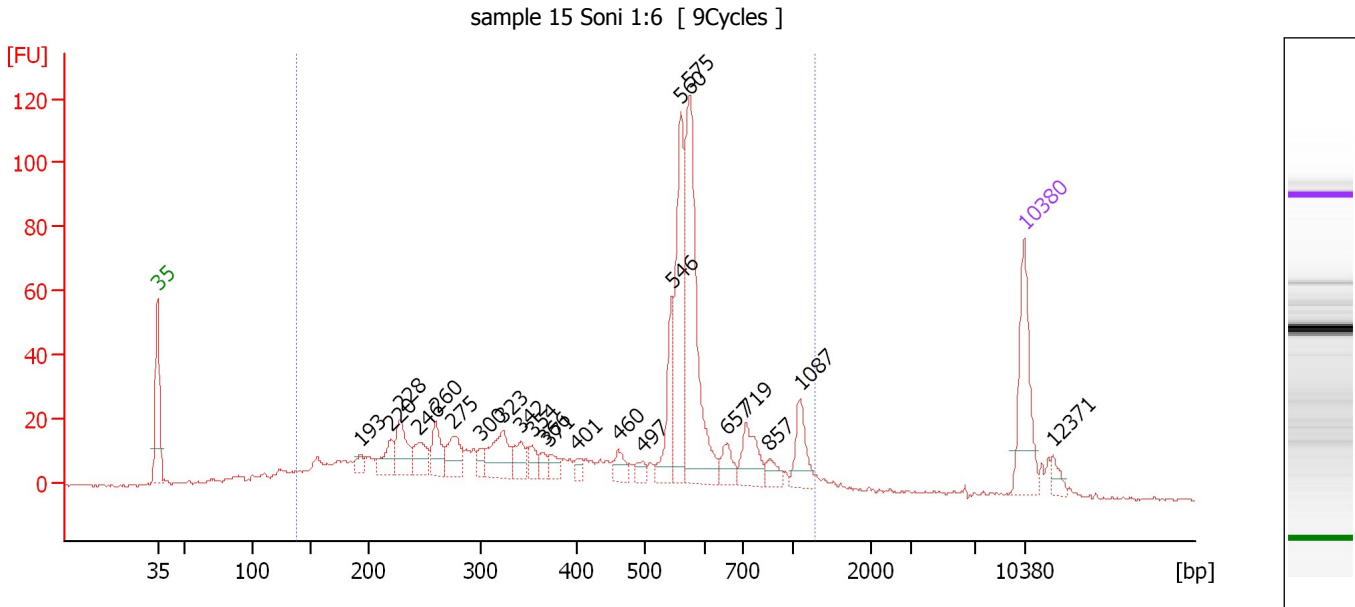
**Region table for sample 8 : sample 14 Soni 1:6**

From [bp]	To [bp]	Average Size [bp]	Molarity [pmol/l]	Conc. [pg/μl]	Corr. Area	% of Total	Size distribution in CV [%]	Color
145	2,665	629	10,632.0	2,623.76	2,575.7	88	73.0	

Assay Class: High Sensitivity DNA Assay  
 Data Path: C:\...ents and Settings\Bioanalyzer\2013-04-09\2013-04-09\_001.xad

Created: 4/9/2013 10:14:04 AM  
 Modified: 4/9/2013 10:57:32 AM

**Electropherogram Summary Continued ...**



**Overall Results for sample 9 : sample 15 Soni 1:6**

Number of peaks found: 23                      Corr. Area 1: 929.4  
 Noise: 0.5

**Peak table for sample 9 : sample 15 Soni 1:6**

Peak	Size [bp]	Conc. [pg/μl]	Molarity [pmol/l]	Observations
1	35	125.00	5,411.3	Lower Marker
2	193	14.64	115.1	
3	220	32.35	222.4	
4	228	53.87	357.9	
5	246	37.24	229.8	
6	260	39.15	228.2	
7	275	42.65	234.7	
8	300	13.69	69.1	
9	323	59.24	278.0	
10	342	28.19	124.8	
11	354	16.38	70.2	
12	366	12.02	49.8	
13	371	14.56	59.5	
14	401	9.92	37.5	
15	460	18.52	61.0	
16	497	10.66	32.5	
17	546	57.71	160.3	
18	560	149.89	405.5	
19	575	218.37	575.8	
20	657	22.79	52.6	
21	719	45.69	96.3	
22	857	13.90	24.6	
23	1,087	37.77	52.6	
24	10,380	75.00	10.9	Upper Marker
25	12,371	0.00	0.0	

Assay Class: High Sensitivity DNA Assay  
Data Path: C:\...ents and Settings\Bioanalyzer\2013-04-09\2013-04-09\_001.xad

Created: 4/9/2013 10:14:04 AM  
Modified: 4/9/2013 10:57:32 AM

**Electropherogram Summary Continued ...**

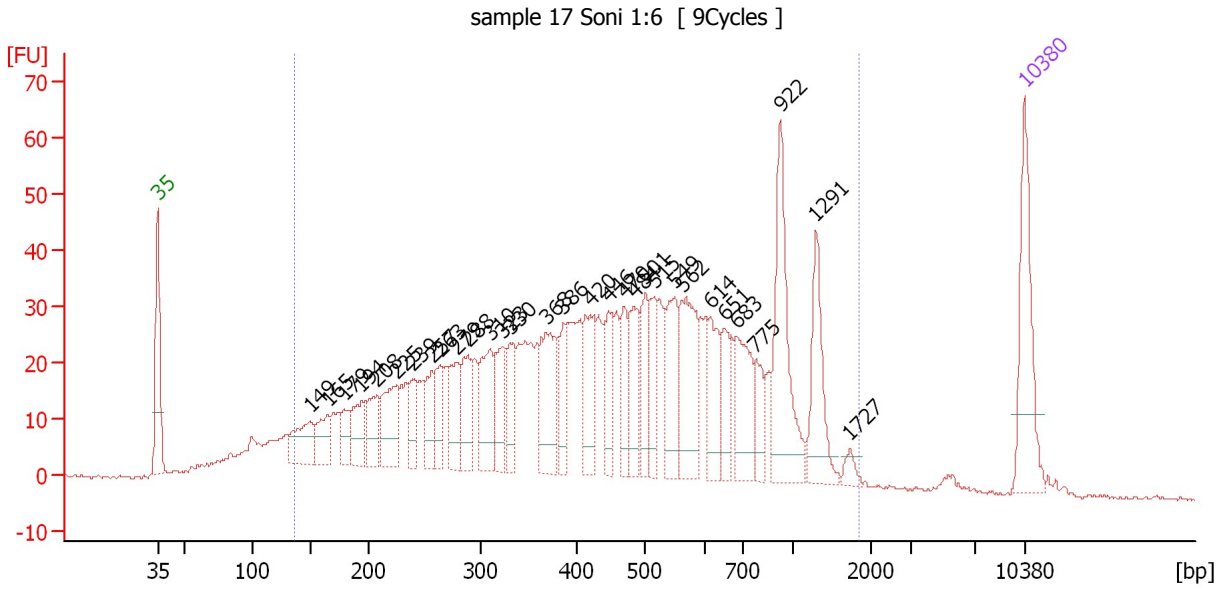
... Region table for sample 9 : sample 15 Soni 1:6

From [bp]	To [bp]	Average Size [bp]	Molarity [pmol/l]	Conc. [pg/μl]	Corr. Area	% of Total	Size distribution in CV [%]	Color
138	1,267	488	6,486.3	1,471.02	929.4	90	44.8	■

Assay Class: High Sensitivity DNA Assay  
 Data Path: C:\...ents and Settings\Bioanalyzer\2013-04-09\2013-04-09\_001.xad

Created: 4/9/2013 10:14:04 AM  
 Modified: 4/9/2013 10:57:32 AM

**Electropherogram Summary Continued ...**



**Overall Results for sample 10 : sample 17 Soni 1:6**

Number of peaks found: 31                      Corr. Area 1: 1,398.5  
 Noise: 0.3

**Peak table for sample 10 : sample 17 Soni 1:6**

Peak	Size [bp]	Conc. [pg/μl]	Molarity [pmol/l]	Observations
1	35	125.00	5,411.3	Lower Marker
2	149	55.19	560.6	
3	165	39.04	358.6	
4	179	26.17	221.9	
5	194	42.25	329.9	
6	208	41.89	305.2	
7	225	64.45	434.9	
8	239	32.87	208.3	
9	257	42.87	252.5	
10	263	36.03	207.2	
11	279	48.70	264.4	
12	288	50.25	264.0	
13	310	70.51	344.5	
14	323	45.15	211.5	
15	330	43.57	199.9	
16	368	83.28	343.0	
17	386	35.71	140.1	
18	420	62.58	225.9	
19	446	42.60	144.8	
20	470	40.07	129.3	
21	484	49.07	153.5	
22	501	44.96	136.1	
23	515	41.65	122.5	
24	549	61.13	168.6	
25	562	90.81	244.8	
26	614	49.59	122.4	

Assay Class: High Sensitivity DNA Assay  
 Data Path: C:\...ents and Settings\Bioanalyzer\2013-04-09\2013-04-09\_001.xad


Created: 4/9/2013 10:14:04 AM  
 Modified: 4/9/2013 10:57:32 AM

**Electropherogram Summary Continued ...**

**... Peak table for sample 10 : sample 17 Soni 1:6**

Peak	Size [bp]	Conc. [pg/μl]	Molarity [pmol/l]	Observations
27	651	41.23	96.0	
28	683	67.65	150.2	
29	775	27.64	54.0	
30	922	115.31	189.5	
31	1,291	63.63	74.7	
32	1,727	8.07	7.1	
33	10,380	75.00	10.9	Upper Marker

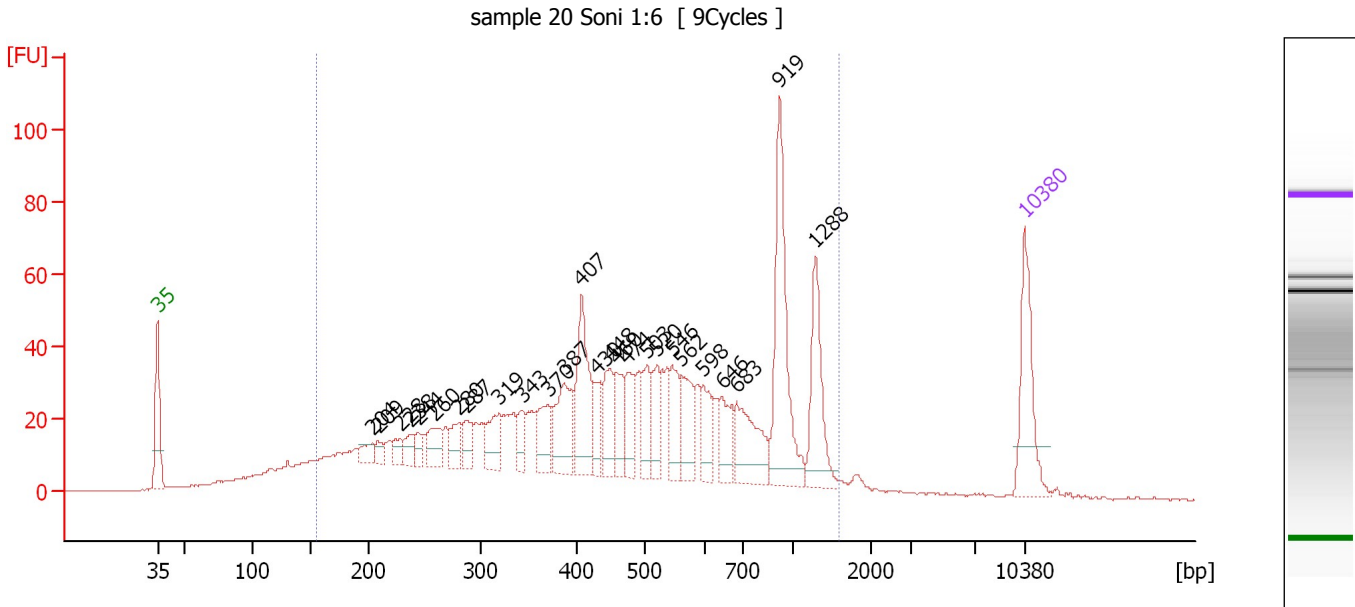
**Region table for sample 10 : sample 17 Soni 1:6**

From [bp]	To [bp]	Average Size [bp]	Molarity [pmol/l]	Conc. [pg/μl]	Corr. Area	% of Total	Size distribution in CV [%]	Color
136	1,836	517	10,626.0	2,396.01	1,398.5	92	57.4	

Assay Class: High Sensitivity DNA Assay  
 Data Path: C:\...ents and Settings\Bioanalyzer\2013-04-09\2013-04-09\_001.xad

Created: 4/9/2013 10:14:04 AM  
 Modified: 4/9/2013 10:57:32 AM

**Electropherogram Summary Continued ...**



**Overall Results for sample 11 : sample 20 Soni 1:6**

Number of peaks found: 26                      Corr. Area 1: 1,367.4  
 Noise: 0.2

**Peak table for sample 11 : sample 20 Soni 1:6**

Peak	Size [bp]	Conc. [pg/μl]	Molarity [pmol/l]	Observations
1	35	125.00	5,411.3	Lower Marker
2	204	21.09	156.6	
3	209	13.75	99.8	
4	228	17.38	115.4	
5	238	20.80	132.4	
6	244	16.26	100.8	
7	260	39.11	228.3	
8	280	28.90	156.7	
9	287	30.85	163.0	
10	319	46.81	222.4	
11	343	27.32	120.7	
12	370	46.92	192.2	
13	387	80.17	313.8	
14	407	109.42	407.5	
15	430	34.50	121.5	
16	448	53.75	181.6	
17	460	45.01	148.3	
18	474	42.29	135.1	
19	503	45.89	138.1	
20	520	39.97	116.4	
21	546	48.30	134.1	
22	562	54.77	147.8	
23	598	38.95	98.7	
24	646	41.19	96.6	
25	683	81.19	180.1	
26	919	158.60	261.5	



Assay Class: High Sensitivity DNA Assay  
 Data Path: C:\...ents and Settings\Bioanalyzer\2013-04-09\2013-04-09\_001.xad


Created: 4/9/2013 10:14:04 AM  
 Modified: 4/9/2013 10:57:32 AM

### Electropherogram Summary Continued ...

#### ... Peak table for sample 11 : sample 20 Soni 1:6

Peak	Size [bp]	Conc. [pg/μl]	Molarity [pmol/l]	Observations
27	1,288	82.41	96.9	
28	10,380	75.00	10.9	Upper Marker

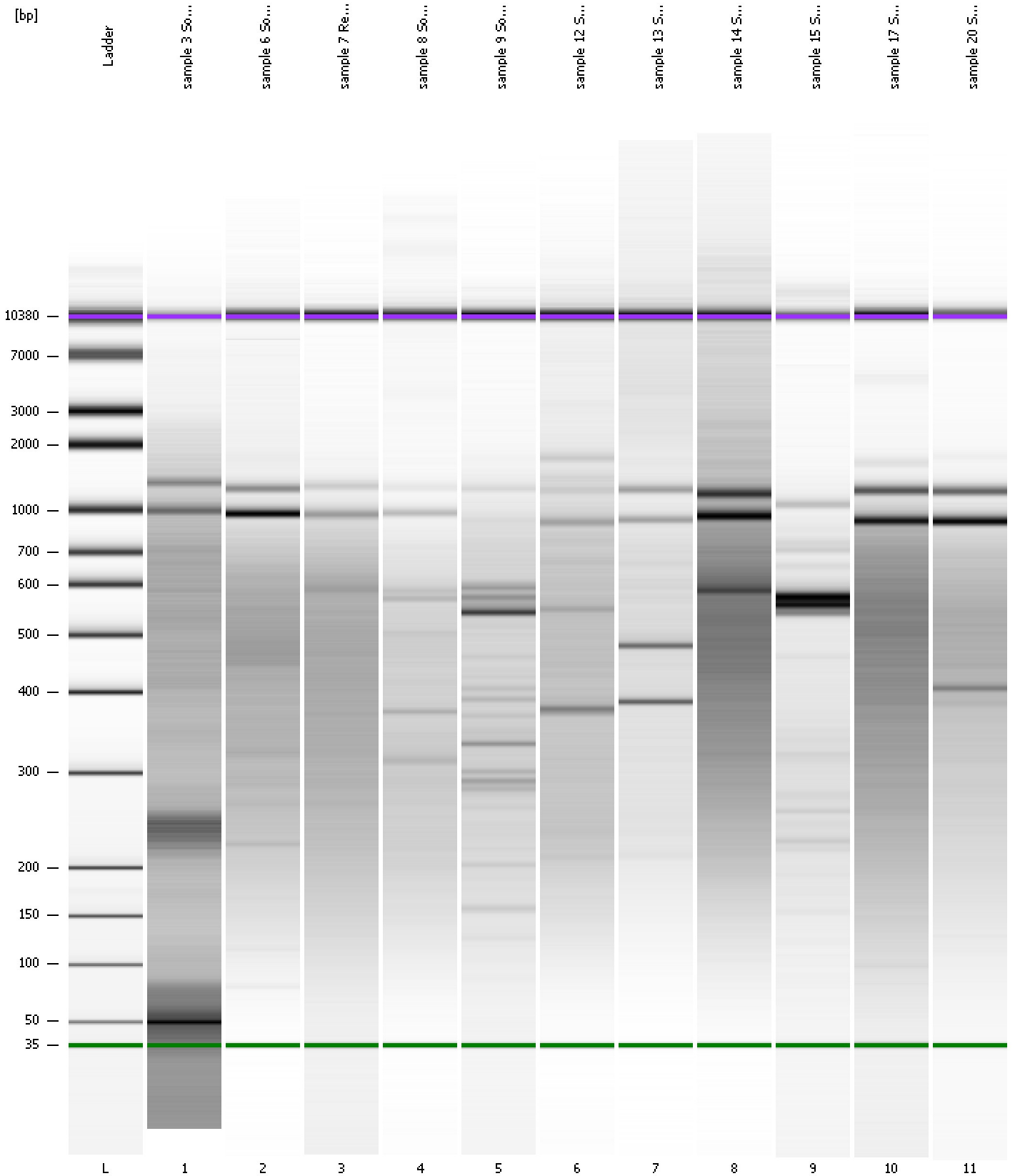
#### Region table for sample 11 : sample 20 Soni 1:6

From [bp]	To [bp]	Average Size [bp]	Molarity [pmol/l]	Conc. [pg/μl]	Corr. Area	% of Total	Size distribution in CV [%]	Color
154	1,584	548	8,737.1	2,150.07	1,367.4	91	54.2	

Assay Class: High Sensitivity DNA Assay  
Data Path: C:\...ents and Settings\Bioanalyzer\2013-04-09\2013-04-09\_001.xad

Created: 4/9/2013 10:14:04 AM  
Modified: 4/9/2013 10:57:32 AM

**Gel Image**

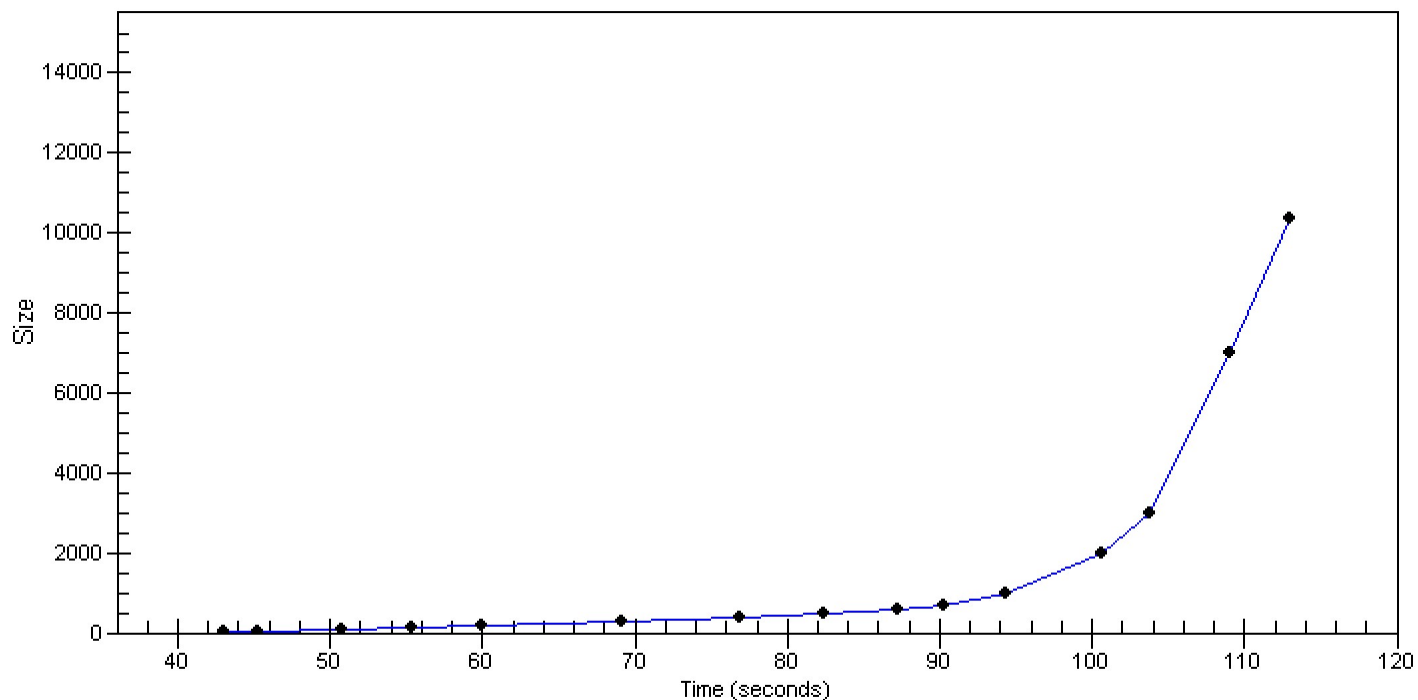


Assay Class: High Sensitivity DNA Assay  
Data Path: C:\...ents and Settings\Bioanalyzer\2013-04-09\2013-04-09\_001.xad

Created: 4/9/2013 10:14:04 AM  
Modified: 4/9/2013 10:57:32 AM

**Curves**

**Standard Curve**



Assay Class: High Sensitivity DNA Assay  
 Data Path: C:\...ents and Settings\Bioanalyzer\2013-04-09\2013-04-09\_001.xad

Created: 4/9/2013 10:14:04 AM  
 Modified: 4/9/2013 10:57:32 AM

**Run Logbook**

Description	Number	Source	Category	Sub Category	Time	Time Zone	User	Host
Run ended on port 1 (Number of wells acquired: 12)		Instrument	Run		4/9/2013 10:55:23 AM	(GMT --07:00) Pacific Standard Time	UC Davis	D8XSMGH1
Run started on port 1 (File: C:\Documents and Settings\Bioanalyzer\2013-04-09\2013-04-09_001.xad)		Instrument	Run		4/9/2013 10:14:10 AM	(GMT --07:00) Pacific Standard Time	UC Davis	D8XSMGH1
Product Number : G2938B		Instrument	Run		4/9/2013 10:14:10 AM	(GMT --07:00) Pacific Standard Time	UC Davis	D8XSMGH1
Name :		Instrument	Run		4/9/2013 10:14:10 AM	(GMT --07:00) Pacific Standard Time	UC Davis	D8XSMGH1
Vendor : Agilent Technologies		Instrument	Run		4/9/2013 10:14:10 AM	(GMT --07:00) Pacific Standard Time	UC Davis	D8XSMGH1
Serial# : DE13701086		Instrument	Run		4/9/2013 10:14:10 AM	(GMT --07:00) Pacific Standard Time	UC Davis	D8XSMGH1
Firmware : C.01.069		Instrument	Run		4/9/2013 10:14:10 AM	(GMT --07:00) Pacific Standard Time	UC Davis	D8XSMGH1
Cartridge : Electrode		Instrument	Run		4/9/2013 10:14:10 AM	(GMT --07:00) Pacific Standard Time	UC Davis	D8XSMGH1