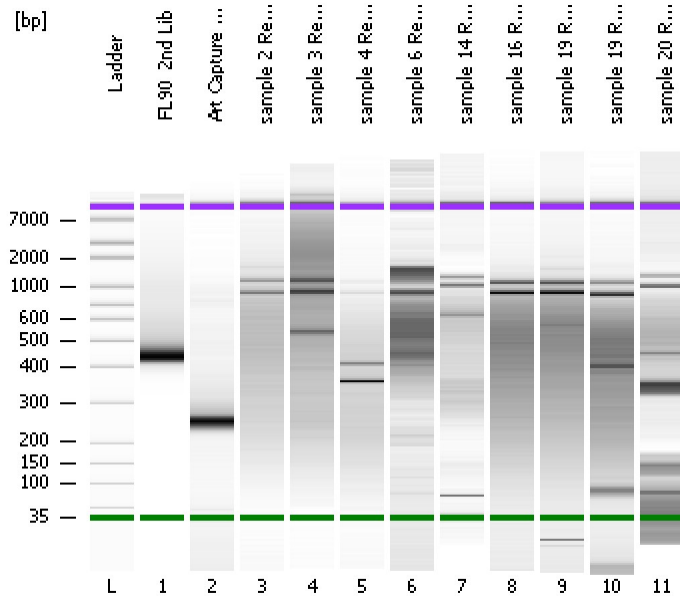


Assay Class: High Sensitivity DNA Assay
Data Path: C:\...ents and Settings\Bioanalyzer\2013-04-09\2013-04-09_003.xad

Created: 4/9/2013 1:21:19 PM
Modified: 4/9/2013 2:13:15 PM

Electrophoresis File Run Summary



Instrument Information:

Instrument Name: DE13701086 Firmware: C.01.069
Serial#: DE13701086 Type: G2938B

Assay Information:

Assay Origin Path: C:\Program Files\Agilent\2100 bioanalyzer\2100 expert\assays\dsDNA\High Sensitivity DNA.xsy
Assay Class: High Sensitivity DNA Assay
Version: 1.03
Assay Comments: Copyright © 2003-2010 Agilent Technologies

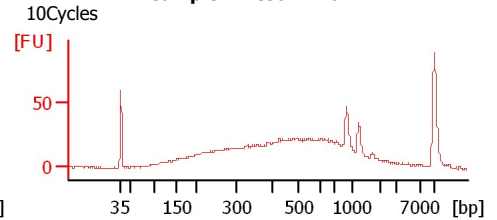
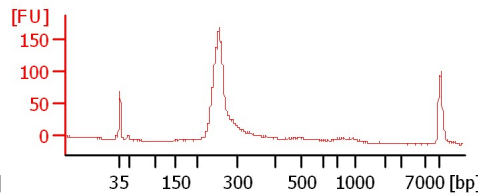
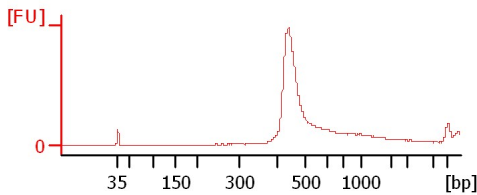
Chip Information:

Chip Lot #:
Reagent Kit Lot #:
Chip Comments:

FL90_2nd Lib

Art Capture Lib 1:22

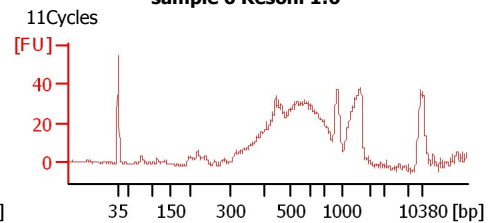
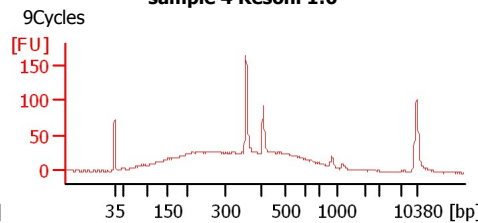
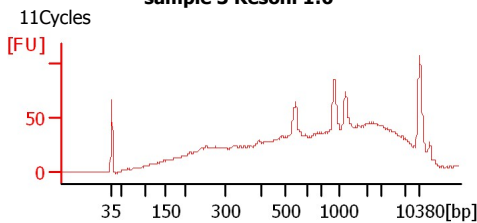
sample 2 Resoni 1:6



sample 3 Resoni 1:6

sample 4 Resoni 1:6

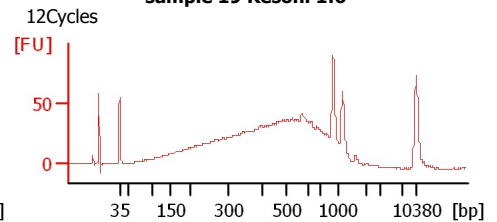
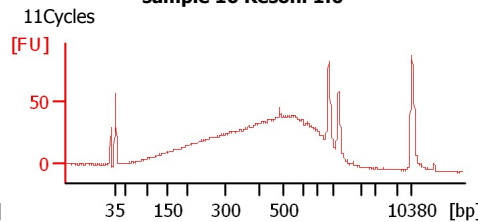
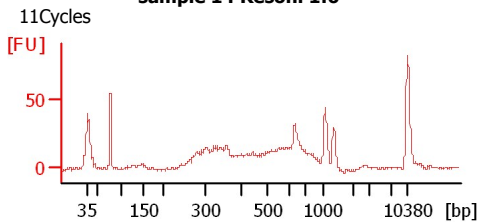
sample 6 Resoni 1:6



sample 14 Resoni 1:6

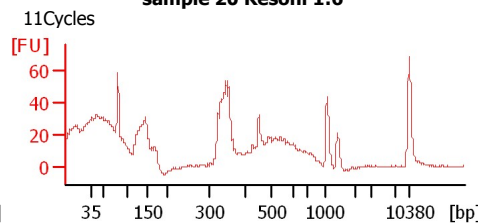
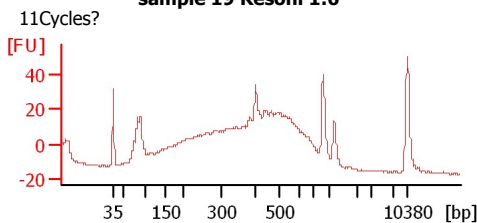
sample 16 Resoni 1:6

sample 19 Resoni 1:6



sample 19 Resoni 1:6

sample 20 Resoni 1:6



Assay Class: High Sensitivity DNA Assay
Data Path: C:\...ents and Settings\Bioanalyzer\2013-04-09\2013-04-09_003.xad

Created: 4/9/2013 1:21:19 PM
Modified: 4/9/2013 2:13:15 PM

Electrophoresis File Run Summary (Chip Summary)

Sample Name	Sample Comment	Rest. Digest	Status	Observation	Result Label	Result Color
FL90_2nd Lib		<input type="checkbox"/>	✓			
Art Capture Lib 1:22		<input type="checkbox"/>	✓			
sample 2 Resoni 1:6	10Cycles	<input type="checkbox"/>	✓			
sample 3 Resoni 1:6	11Cycles	<input type="checkbox"/>	✓			
sample 4 Resoni 1:6	9Cycles	<input type="checkbox"/>	✓			
sample 6 Resoni 1:6	11Cycles	<input type="checkbox"/>	✓			
sample 14 Resoni 1:6	11Cycles	<input type="checkbox"/>	✓			
sample 16 Resoni 1:6	11Cycles	<input type="checkbox"/>	✓			
sample 19 Resoni 1:6	12Cycles	<input type="checkbox"/>	✓			
sample 19 Resoni 1:6	11Cycles?	<input type="checkbox"/>	✓			
sample 20 Resoni 1:6	11Cycles	<input type="checkbox"/>	✓			
Ladder		<input type="checkbox"/>	✓			

Chip Lot #

Reagent Kit Lot #

Chip Comments :

Assay Class: High Sensitivity DNA Assay
Data Path: C:\...ents and Settings\Bioanalyzer\2013-04-09\2013-04-09_003.xad

Created: 4/9/2013 1:21:19 PM
Modified: 4/9/2013 2:13:15 PM

Electrophoresis Assay Details

General Analysis Settings

Number of Available Sample and Ladder Wells (Max.) : 12
Minimum Visible Range [s] : 32
Maximum Visible Range [s] : 138
Start Analysis Time Range [s] : 33
End Analysis Time Range [s] : 137.5
Ladder Concentration [pg/μl] : 1950
Uses Standard Area for Ladder Fragments
Lower Marker Concentration [pg/μl] : 125
Upper Marker Concentration [pg/μl] : 75
Used Upper Marker for Quantitation
Standard Curve Fit is Point to Point
Show Data Aligned to Lower and Upper Marker

Integrator Settings

Integration Start Time [s] : 33.05
Integration End Time [s] : 137
Slope Threshold : 0.8
Height Threshold [FU] : 5
Area Threshold : 0.1
Width Threshold [s] : 0.6
Baseline Plateau [s] : 0.5

Filter Settings

Filter Width [s] : 0.5
Polynomial Order : 4

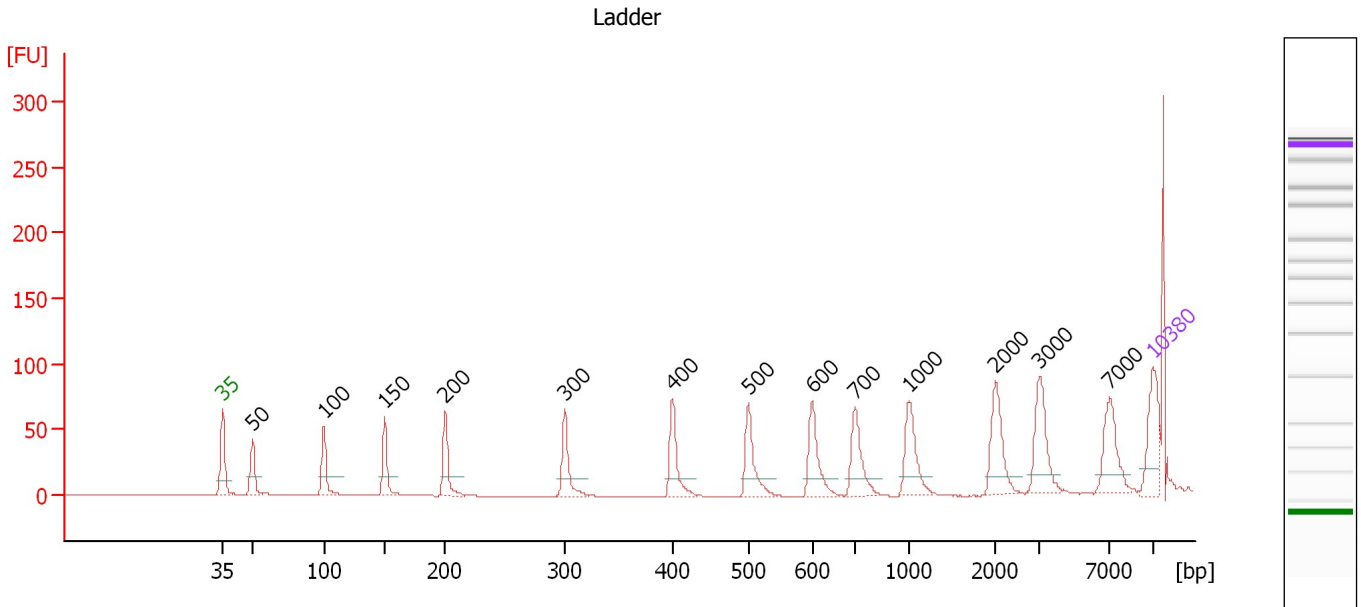
Ladder

Ladder Peak	Size	Area
1	35	160
2	50	210
3	100	208
4	150	221
5	200	242
6	300	270
7	400	305
8	500	306
9	600	336
10	700	321
11	1000	366
12	2000	413
13	3000	411
14	7000	400
15	10380	214

Assay Class: High Sensitivity DNA Assay
 Data Path: C:\...ents and Settings\Bioanalyzer\2013-04-09\2013-04-09_003.xad

Created: 4/9/2013 1:21:19 PM
 Modified: 4/9/2013 2:13:15 PM

Electropherogram Summary



Overall Results for Ladder

Noise: 0.1

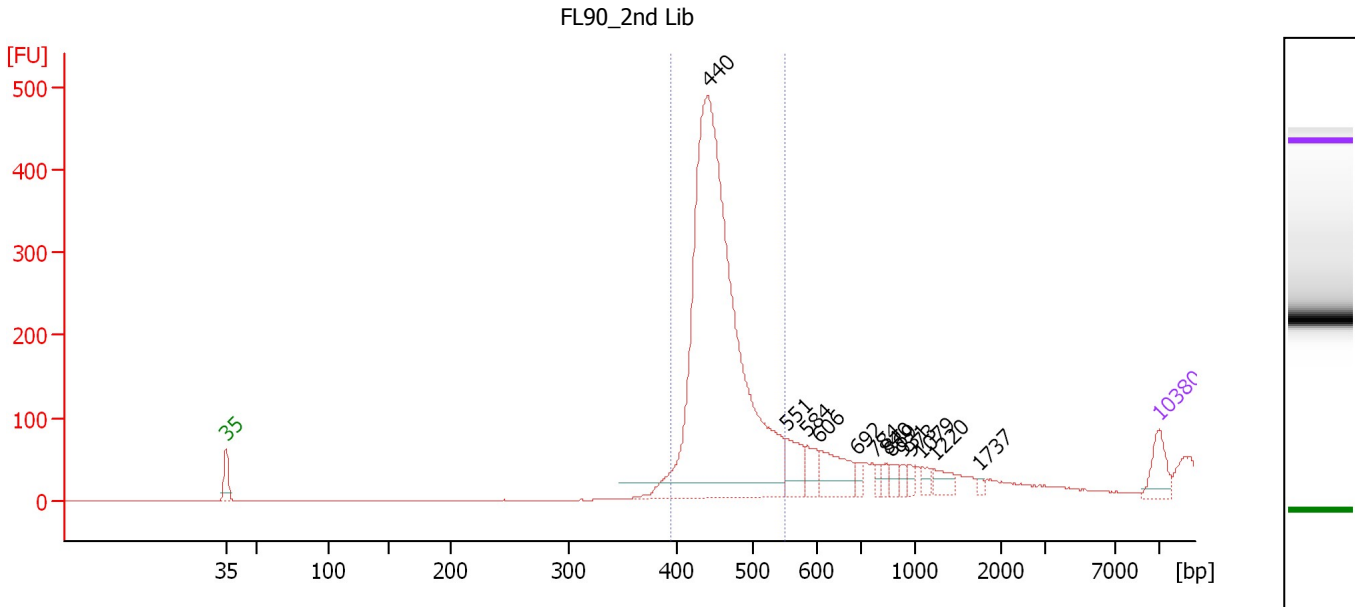
Peak table for Ladder

Peak	Size [bp]	Conc. [pg/μl]	Molarity [pmol/l]	Observations
1	35	125.00	5,411.3	Lower Marker
2	50	150.00	4,545.5	Ladder Peak
3	100	150.00	2,272.7	Ladder Peak
4	150	150.00	1,515.2	Ladder Peak
5	200	150.00	1,136.4	Ladder Peak
6	300	150.00	757.6	Ladder Peak
7	400	150.00	568.2	Ladder Peak
8	500	150.00	454.5	Ladder Peak
9	600	150.00	378.8	Ladder Peak
10	700	150.00	324.7	Ladder Peak
11	1,000	150.00	227.3	Ladder Peak
12	2,000	150.00	113.6	Ladder Peak
13	3,000	150.00	75.8	Ladder Peak
14	7,000	150.00	32.5	Ladder Peak
15	10,380	75.00	10.9	Upper Marker

Assay Class: High Sensitivity DNA Assay
 Data Path: C:\...ents and Settings\Bioanalyzer\2013-04-09\2013-04-09_003.xad

Created: 4/9/2013 1:21:19 PM
 Modified: 4/9/2013 2:13:15 PM

Electropherogram Summary Continued ...



Setpoint Deviations for sample 1 : FL90_2nd Lib

Height Threshold [FU] : 20

Overall Results for sample 1 : FL90_2nd Lib

Number of peaks found: 13 Corr. Area 1: 2,075.0
 Noise: 0.2

Peak table for sample 1 : FL90_2nd Lib

Peak	Size [bp]	Conc. [pg/μl]	Molarity [pmol/l]	Observations
1	35	125.00	5,411.3	Lower Marker
2	440	2,602.61	8,959.5	
3	551	120.55	331.4	
4	584	74.06	192.2	
5	606	149.35	373.6	
6	692	30.75	67.4	
7	784	22.32	43.2	
8	840	23.31	42.1	
9	869	30.75	53.6	
10	931	22.92	37.3	
11	973	19.10	29.7	
12	1,079	26.13	36.7	
13	1,220	45.32	56.3	
14	1,737	10.85	9.5	
15	10,380	75.00	10.9	Upper Marker

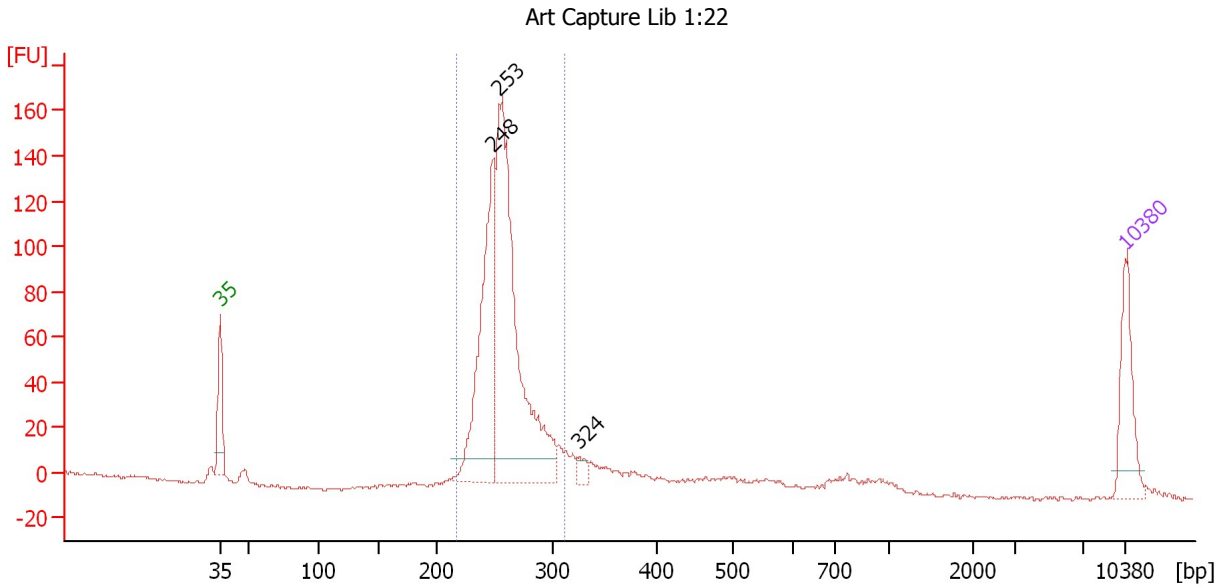
Region table for sample 1 : FL90_2nd Lib

From [bp]	To [bp]	Average Size [bp]	Molarity [pmol/l]	Conc. [pg/μl]	Corr. Area	% of Total	Size distribution in CV [%]	Color
394	548	454	7,321.0	2,188.89	2,075.0	91	6.5	Blue

Assay Class: High Sensitivity DNA Assay
 Data Path: C:\...ents and Settings\Bioanalyzer\2013-04-09\2013-04-09_003.xad

Created: 4/9/2013 1:21:19 PM
 Modified: 4/9/2013 2:13:15 PM

Electropherogram Summary Continued ...



Setpoint Deviations for sample 2 : Art Capture Lib 1:22

Height Threshold [FU] : 10

Overall Results for sample 2 : Art Capture Lib 1:22

Number of peaks found: 3 Corr. Area 1: 829.6
 Noise: 0.6

Peak table for sample 2 : Art Capture Lib 1:22

Peak	Size [bp]	Conc. [pg/μl]	Molarity [pmol/l]	Observations
1	35	125.00	5,411.3	Lower Marker
2	248	362.61	2,213.9	
3	253	638.11	3,818.4	
4	324	17.84	83.3	
5	10,380	75.00	10.9	Upper Marker

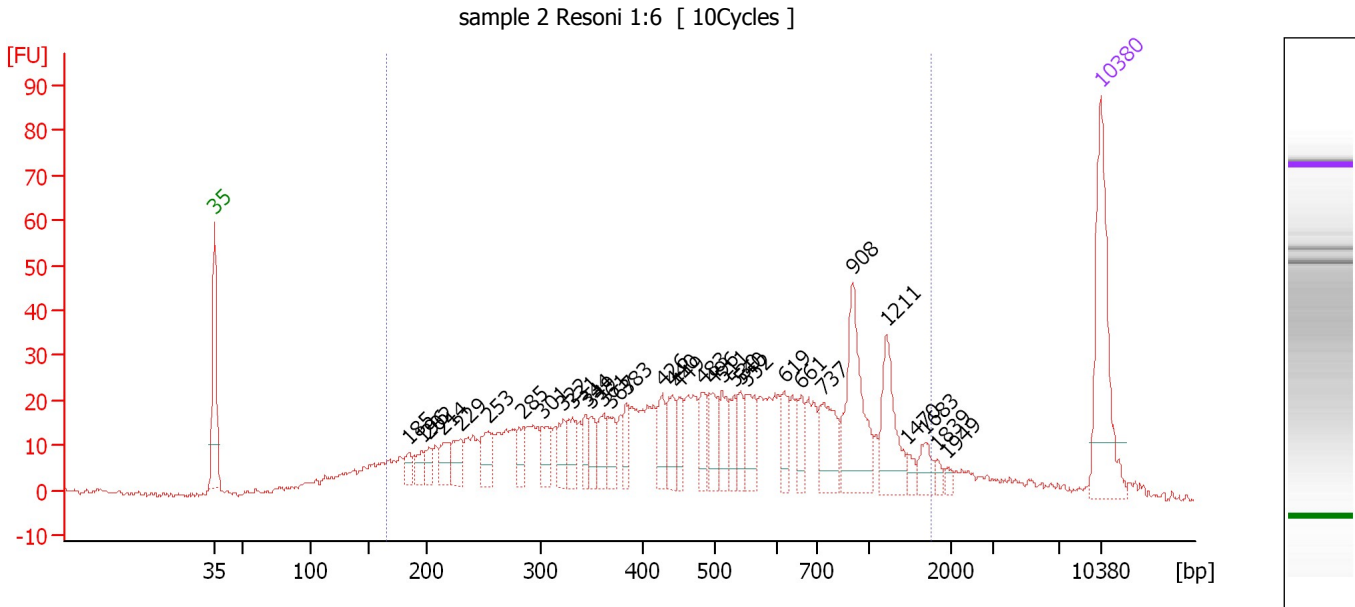
Region table for sample 2 : Art Capture Lib 1:22

From [bp]	To [bp]	Average Size [bp]	Molarity [pmol/l]	Conc. [pg/μl]	Corr. Area	% of Total	Size distribution in CV [%]	Color
216	311	258	5,913.3	1,003.84	829.6	83	6.8	Blue

Assay Class: High Sensitivity DNA Assay
 Data Path: C:\...ents and Settings\Bioanalyzer\2013-04-09\2013-04-09_003.xad

Created: 4/9/2013 1:21:19 PM
 Modified: 4/9/2013 2:13:15 PM

Electropherogram Summary Continued ...



Overall Results for sample 3 : sample 2 Resoni 1:6

Number of peaks found: 33 Corr. Area 1: 973.3
 Noise: 0.6

Peak table for sample 3 : sample 2 Resoni 1:6


Peak	Size [bp]	Conc. [pg/μl]	Molarity [pmol/l]	Observations
1	35	125.00	5,411.3	Lower Marker
2	185	12.39	101.7	
3	196	16.53	128.0	
4	202	11.54	86.6	
5	214	19.84	140.2	
6	229	22.53	148.8	
7	253	27.79	166.3	
8	285	19.66	104.7	
9	301	22.84	114.9	
10	322	20.94	98.5	
11	331	21.49	98.4	
12	344	15.63	68.8	
13	349	16.43	71.4	
14	361	21.01	88.1	
15	367	20.35	83.9	
16	383	16.41	64.9	
17	426	23.61	83.9	
18	440	23.90	82.3	
19	449	17.16	57.9	
20	483	21.61	67.7	
21	496	25.28	77.2	
22	511	24.33	72.2	
23	530	17.23	49.2	
24	540	16.28	45.7	
25	552	29.15	80.0	
26	619	18.50	45.3	

Assay Class: High Sensitivity DNA Assay
 Data Path: C:\...ents and Settings\Bioanalyzer\2013-04-09\2013-04-09_003.xad

Created: 4/9/2013 1:21:19 PM
 Modified: 4/9/2013 2:13:15 PM

Electropherogram Summary Continued ...

... Peak table for sample 3 : sample 2 Resoni 1:6

Peak	Size [bp]	Conc. [pg/μl]	Molarity [pmol/l]	Observations
27	661	16.62	38.1	
28	737	39.09	80.4	
29	908	74.43	124.2	
30	1,211	44.47	55.7	
31	1,470	6.05	6.2	
32	1,683	12.76	11.5	
33	1,839	3.78	3.1	
34	1,949	3.88	3.0	
35	 10,380	75.00	10.9	Upper Marker

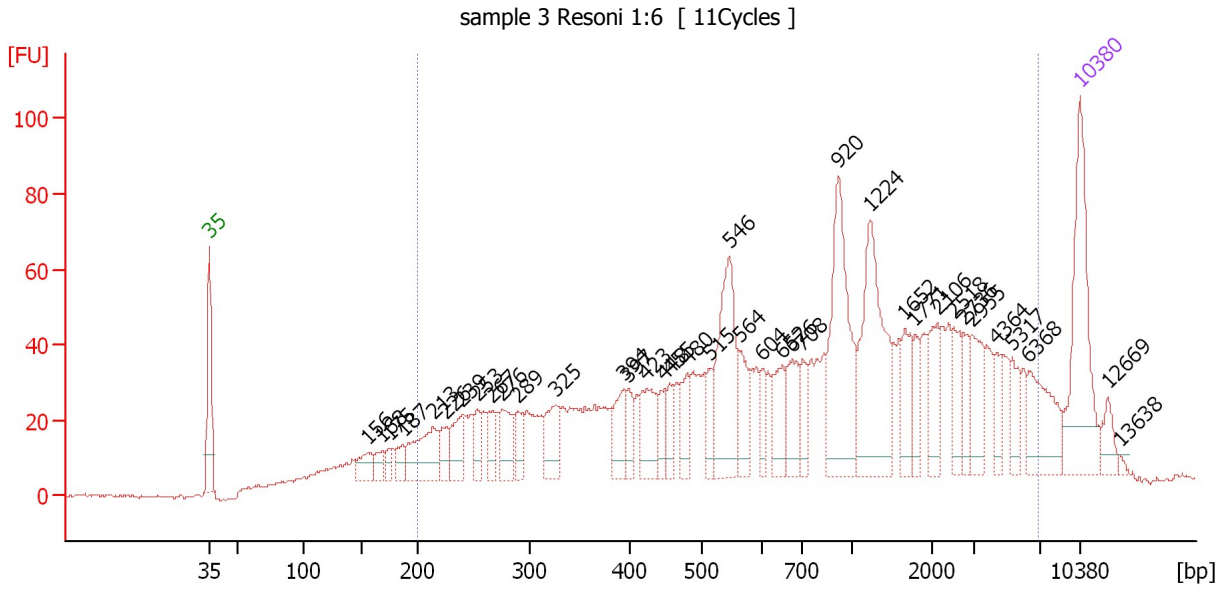
Region table for sample 3 : sample 2 Resoni 1:6

From [bp]	To [bp]	Average Size [bp]	Molarity [pmol/l]	Conc. [pg/μl]	Corr. Area	% of Total	Size distribution in CV [%]	Color
165	1,751	563	4,625.6	1,158.60	973.3	90	56.8	

Assay Class: High Sensitivity DNA Assay
 Data Path: C:\...ents and Settings\Bioanalyzer\2013-04-09\2013-04-09_003.xad

Created: 4/9/2013 1:21:19 PM
 Modified: 4/9/2013 2:13:15 PM

Electropherogram Summary Continued ...



Overall Results for sample 4 : sample 3 Resoni 1:6

Number of peaks found: 38 Corr. Area 1: 1,849.4
 Noise: 0.4

Peak table for sample 4 : sample 3 Resoni 1:6

Peak	Size [bp]	Conc. [pg/μl]	Molarity [pmol/l]	Observations
1	35	125.00	5,411.3	Lower Marker
2	156	21.35	207.0	
3	168	12.41	111.6	
4	175	9.69	83.9	
5	187	14.01	113.7	
6	213	57.31	407.3	
7	226	19.12	128.5	
8	239	32.73	207.2	
9	253	16.99	101.7	
10	267	20.05	114.0	
11	276	33.98	186.8	
12	289	17.32	90.7	
13	325	35.57	165.9	
14	394	28.57	109.9	
15	397	17.41	66.5	
16	423	39.65	142.1	
17	448	17.88	60.5	
18	455	15.28	50.9	
19	480	23.47	74.1	
20	515	19.26	56.7	
21	546	91.57	253.9	
22	564	26.32	70.8	
23	604	14.54	36.5	
24	652	29.35	68.2	
25	676	32.52	72.9	
26	708	19.32	41.3	

Assay Class: High Sensitivity DNA Assay
 Data Path: C:\...ents and Settings\Bioanalyzer\2013-04-09\2013-04-09_003.xad

Created: 4/9/2013 1:21:19 PM
 Modified: 4/9/2013 2:13:15 PM

Electropherogram Summary Continued ...

... Peak table for sample 4 : sample 3 Resoni 1:6

Peak	Size [bp]	Conc. [pg/µl]	Molarity [pmol/l]	Observations
27	920	104.23	171.6	
28	1,224	99.82	123.6	
29	1,652	24.52	22.5	
30	1,771	14.91	12.8	
31	2,106	24.92	17.9	
32	2,518	16.80	10.1	
33	2,736	13.19	7.3	
34	2,955	26.28	13.5	
35	4,364	12.89	4.5	
36	5,317	16.24	4.6	
37	6,368	39.55	9.4	
38	10,380	75.00	10.9	Upper Marker
39	12,669	0.00	0.0	
40	13,638	0.00	0.0	

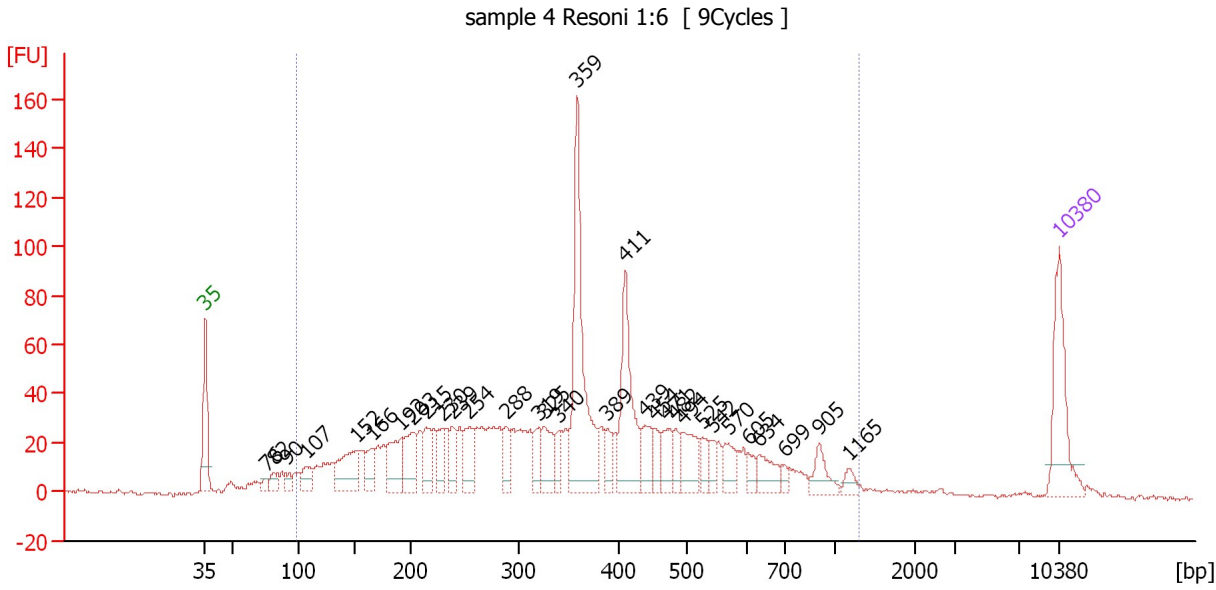
Region table for sample 4 : sample 3 Resoni 1:6

From [bp]	To [bp]	Average Size [bp]	Molarity [pmol/l]	Conc. [pg/µl]	Corr. Area	% of Total	Size distribution in CV [%]	Color
200	6,946	1,334	4,454.4	1,479.55	1,849.4	89	100.0	■

Assay Class: High Sensitivity DNA Assay
 Data Path: C:\...ents and Settings\Bioanalyzer\2013-04-09\2013-04-09_003.xad

Created: 4/9/2013 1:21:19 PM
 Modified: 4/9/2013 2:13:15 PM

Electropherogram Summary Continued ...



Overall Results for sample 5 : sample 4 Resoni 1:6

Number of peaks found: 32 Corr. Area 1: 1,583.7
 Noise: 0.8

Peak table for sample 5 : sample 4 Resoni 1:6

Peak	Size [bp]	Conc. [pg/μl]	Molarity [pmol/l]	Observations
1	35	125.00	5,411.3	Lower Marker
2	76	9.50	188.7	
3	82	20.49	380.8	
4	90	14.28	239.2	
5	107	29.77	419.8	
6	152	81.67	814.8	
7	166	36.11	329.1	
8	192	65.14	512.8	
9	203	55.11	412.2	
10	215	43.29	305.5	
11	230	39.44	260.0	
12	239	31.75	201.7	
13	254	49.10	292.8	
14	288	28.12	147.8	
15	319	31.68	150.6	
16	325	45.83	213.5	
17	340	23.27	103.7	
18	359	226.83	957.7	
19	389	21.52	83.9	
20	411	131.04	483.4	
21	439	39.54	136.5	
22	454	20.16	67.3	
23	471	31.97	102.9	
24	482	22.54	70.8	
25	494	47.29	145.1	
26	525	17.42	50.3	

Assay Class: High Sensitivity DNA Assay
 Data Path: C:\...ents and Settings\Bioanalyzer\2013-04-09\2013-04-09_003.xad


Created: 4/9/2013 1:21:19 PM
 Modified: 4/9/2013 2:13:15 PM

Electropherogram Summary Continued ...

... Peak table for sample 5 : sample 4 Resoni 1:6

Peak	Size [bp]	Conc. [pg/μl]	Molarity [pmol/l]	Observations
27	542	15.30	42.8	
28	570	26.25	69.7	
29	605	12.41	31.1	
30	634	29.77	71.1	
31	699	8.58	18.6	
32	905	25.37	42.5	
33	1,165	9.52	12.4	
34	10,380	75.00	10.9	Upper Marker

Region table for sample 5 : sample 4 Resoni 1:6

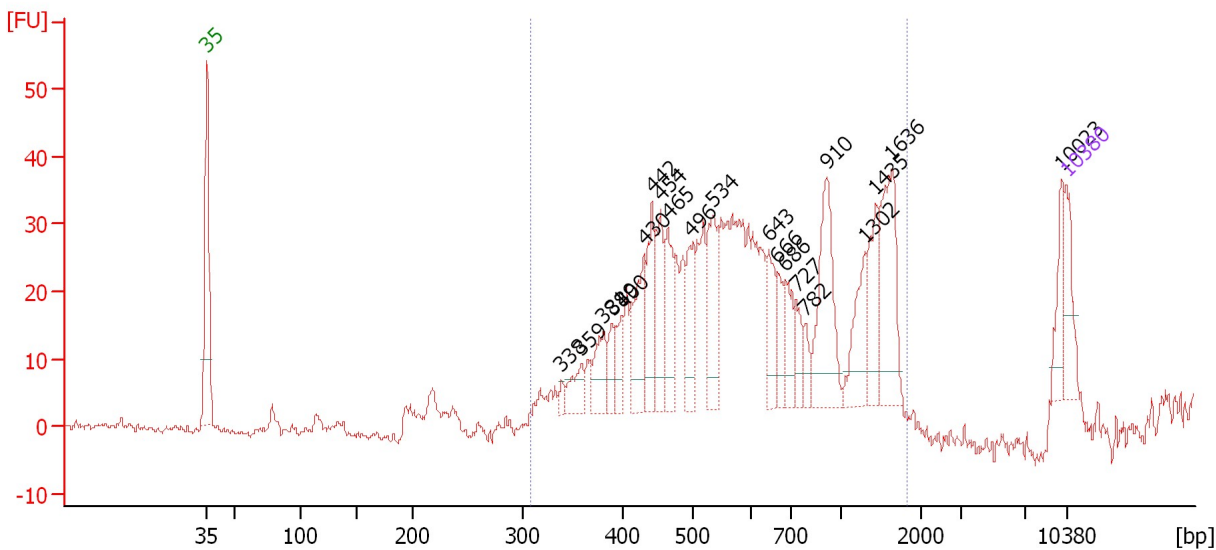
From [bp]	To [bp]	Average Size [bp]	Molarity [pmol/l]	Conc. [pg/μl]	Corr. Area	% of Total	Size distribution in CV [%]	Color
98	1,313	382	10,499.3	1,869.03	1,583.7	94	49.2	

Assay Class: High Sensitivity DNA Assay
 Data Path: C:\...ents and Settings\Bioanalyzer\2013-04-09\2013-04-09_003.xad

Created: 4/9/2013 1:21:19 PM
 Modified: 4/9/2013 2:13:15 PM

Electropherogram Summary Continued ...

sample 6 Resoni 1:6 [11Cycles]



Overall Results for sample 6 : sample 6 Resoni 1:6

Number of peaks found: 21 Corr. Area 1: 719.3
 Noise: 0.5

Peak table for sample 6 : sample 6 Resoni 1:6

Peak	Size [bp]	Conc. [pg/μl]	Molarity [pmol/l]	Observations
1	35	125.00	5,411.3	Lower Marker
2	338	17.42	78.0	
3	359	60.50	255.5	
4	381	83.77	333.3	
5	389	48.75	189.7	
6	400	55.28	209.6	
7	430	140.63	494.9	
8	442	132.44	454.2	
9	454	114.31	381.5	
10	465	117.86	384.4	
11	496	102.75	314.1	
12	534	144.90	411.3	
13	643	90.02	212.1	
14	666	67.11	152.7	
15	686	71.37	157.7	
16	727	45.91	95.7	
17	782	31.61	61.3	
18	910	206.44	343.6	
19	1,302	104.40	121.5	
20	1,435	97.60	103.0	
21	1,636	176.14	163.1	
22	10,023	59.93	9.1	
23	10,380	75.00	10.9	Upper Marker

Assay Class: High Sensitivity DNA Assay
Data Path: C:\...ents and Settings\Bioanalyzer\2013-04-09\2013-04-09_003.xad

Created: 4/9/2013 1:21:19 PM
Modified: 4/9/2013 2:13:15 PM

Electropherogram Summary Continued ...

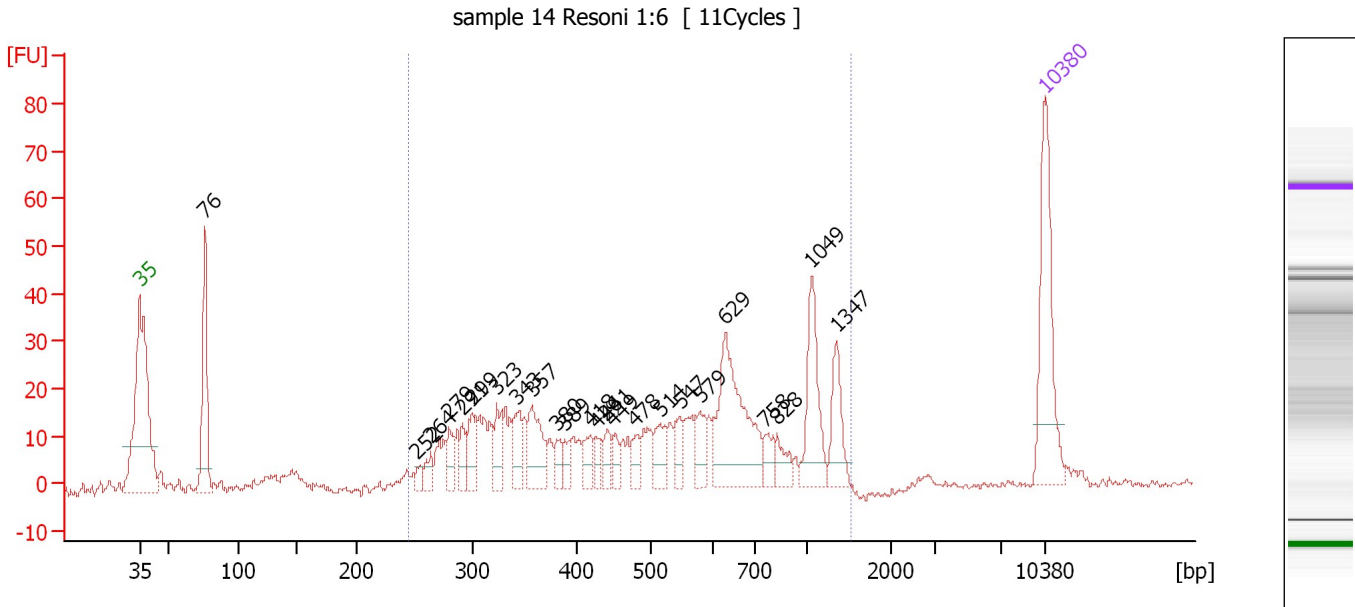
... Region table for sample 6 : sample 6 Resoni 1:6

From [bp]	To [bp]	Average Size [bp]	Molarity [pmol/l]	Conc. [pg/μl]	Corr. Area	% of Total	Size distribution in CV [%]	Color
308	1,819	728	8,374.4	3,107.87	719.3	94	52.1	■

Assay Class: High Sensitivity DNA Assay
 Data Path: C:\...ents and Settings\Bioanalyzer\2013-04-09\2013-04-09_003.xad

Created: 4/9/2013 1:21:19 PM
 Modified: 4/9/2013 2:13:15 PM

Electropherogram Summary Continued ...



Overall Results for sample 7 : sample 14 Resoni 1:6

Number of peaks found: 24 Corr. Area 1: 613.3
 Noise: 0.9

Peak table for sample 7 : sample 14 Resoni 1:6

Peak	Size [bp]	Conc. [pg/μl]	Molarity [pmol/l]	Observations
1	35	125.00	5,411.3	Lower Marker
2	76	115.67	2,309.4	
3	252	9.73	58.5	
4	264	13.59	78.0	
5	279	20.81	112.8	
6	291	17.54	91.2	
7	299	29.11	147.4	
8	323	29.49	138.3	
9	343	26.43	116.9	
10	357	47.21	200.4	
11	380	13.75	54.8	
12	389	11.04	43.0	
13	418	16.32	59.1	
14	426	11.09	39.5	
15	441	13.55	46.5	
16	449	12.42	42.0	
17	478	15.48	49.1	
18	514	23.45	69.1	
19	547	17.79	49.3	
20	579	20.21	52.9	
21	629	112.35	270.7	
22	758	14.49	29.0	
23	828	15.28	28.0	
24	1,049	55.98	80.9	
25	1,347	31.70	35.7	
26	10,380	75.00	10.9	Upper Marker

Assay Class: High Sensitivity DNA Assay
Data Path: C:\...ents and Settings\Bioanalyzer\2013-04-09\2013-04-09_003.xad

Created: 4/9/2013 1:21:19 PM
Modified: 4/9/2013 2:13:15 PM

Electropherogram Summary Continued ...

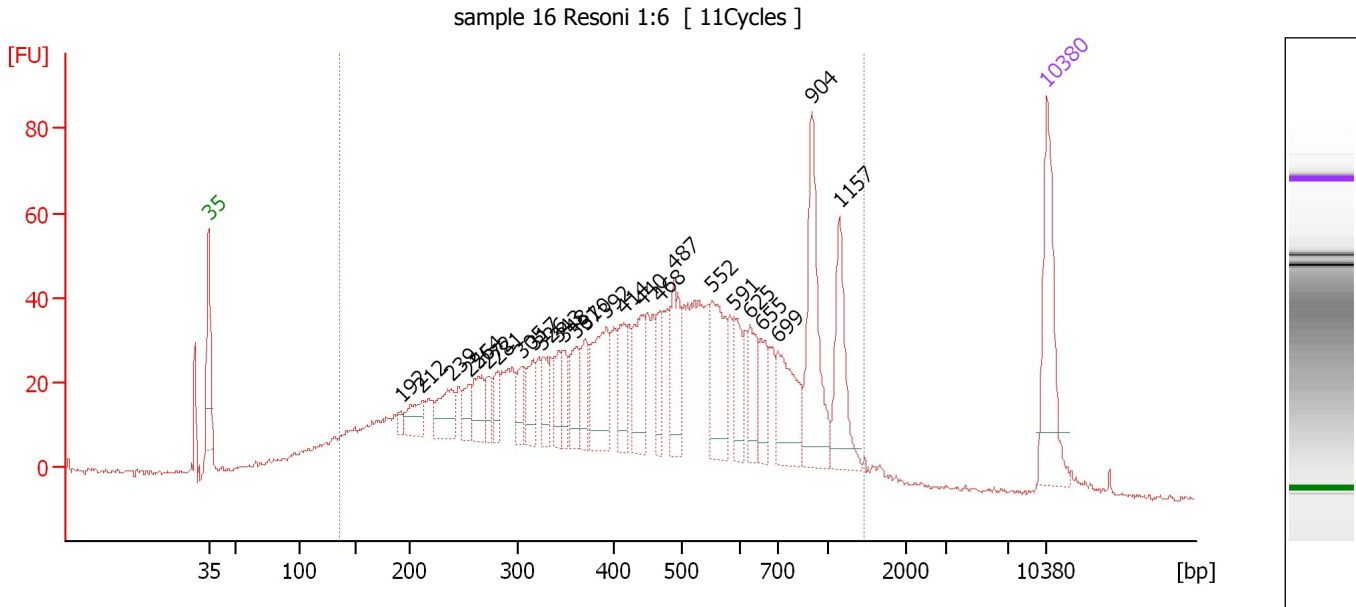
... Region table for sample 7 : sample 14 Resoni 1:6

From [bp]	To [bp]	Average Size [bp]	Molarity [pmol/l]	Conc. [pg/μl]	Corr. Area	% of Total	Size distribution in CV [%]	Color
245	1,522	590	2,744.3	796.03	613.3	83	50.4	■

Assay Class: High Sensitivity DNA Assay
 Data Path: C:\...ents and Settings\Bioanalyzer\2013-04-09\2013-04-09_003.xad

Created: 4/9/2013 1:21:19 PM
 Modified: 4/9/2013 2:13:15 PM

Electropherogram Summary Continued ...



Overall Results for sample 8 : sample 16 Resoni 1:6

Number of peaks found: 26 Corr. Area 1: 1,741.3
 Noise: 0.7

Peak table for sample 8 : sample 16 Resoni 1:6

Peak	Size [bp]	Conc. [pg/μl]	Molarity [pmol/l]	Observations
1	35	125.00	5,411.3	Lower Marker
2	192	9.11	72.0	
3	212	30.60	219.2	
4	239	45.43	288.3	
5	255	20.87	123.9	
6	264	36.94	212.0	
7	272	20.98	116.9	
8	281	20.30	109.3	
9	305	24.48	121.8	
10	317	28.96	138.5	
11	326	25.15	116.8	
12	343	23.91	105.7	
13	348	23.95	104.2	
14	361	39.07	164.0	
15	370	29.18	119.4	
16	392	76.08	293.8	
17	414	36.69	134.3	
18	440	53.22	183.1	
19	468	30.18	97.8	
20	487	50.92	158.4	
21	552	75.17	206.5	
22	591	32.31	82.9	
23	625	37.39	90.7	
24	655	31.74	73.5	
25	699	66.92	145.1	
26	904	100.88	169.0	


Assay Class: High Sensitivity DNA Assay
Data Path: C:\...ents and Settings\Bioanalyzer\2013-04-09\2013-04-09_003.xad

Created: 4/9/2013 1:21:19 PM
Modified: 4/9/2013 2:13:15 PM

Electropherogram Summary Continued ...**... Peak table for sample 8 : sample 16 Resoni 1:6**

Peak	Size [bp]	Conc. [pg/ μ l]	Molarity [pmol/l]	Observations
27	1,157	62.16	81.4	
28	10,380	75.00	10.9	Upper Marker

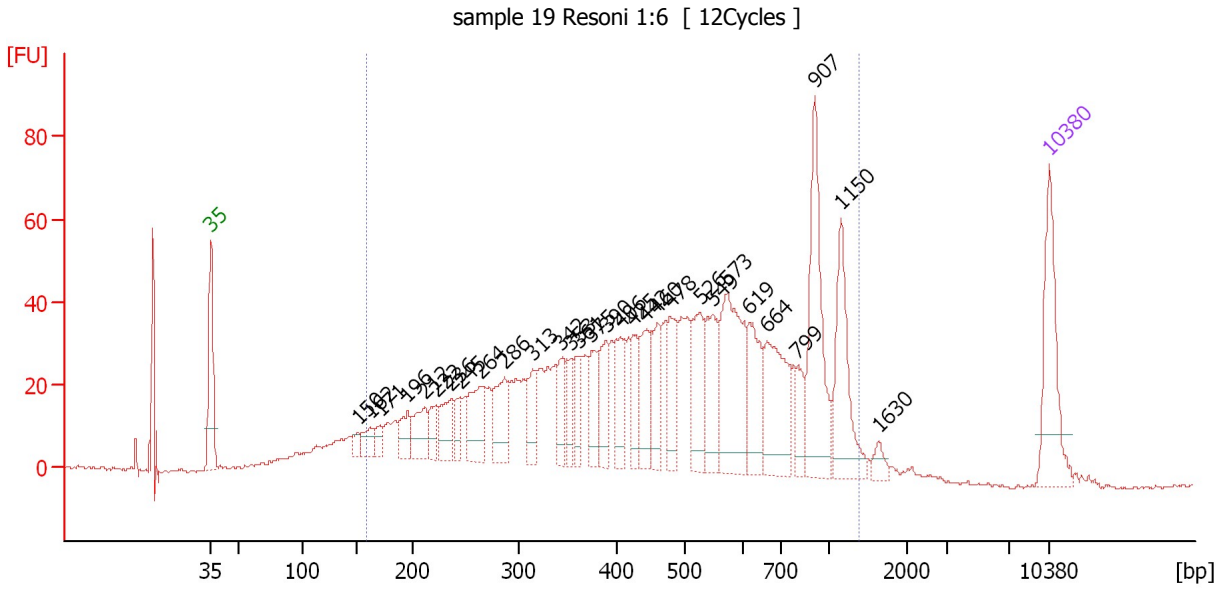
Region table for sample 8 : sample 16 Resoni 1:6

From [bp]	To [bp]	Average Size [bp]	Molarity [pmol/l]	Conc. [pg/ μ l]	Corr. Area	% of Total	Size distribution in CV [%]	Color
137	1,468	508	9,532.5	2,202.78	1,741.3	91	50.9	

Assay Class: High Sensitivity DNA Assay
 Data Path: C:\...ents and Settings\Bioanalyzer\2013-04-09\2013-04-09_003.xad

Created: 4/9/2013 1:21:19 PM
 Modified: 4/9/2013 2:13:15 PM

Electropherogram Summary Continued ...



Overall Results for sample 9 : sample 19 Resoni 1:6

Number of peaks found: 30 Corr. Area 1: 1,546.5
 Noise: 0.4

Peak table for sample 9 : sample 19 Resoni 1:6

Peak	Size [bp]	Conc. [pg/μl]	Molarity [pmol/l]	Observations
1	35	125.00	5,411.3	Lower Marker
2	150	12.03	121.1	
3	162	22.34	209.4	
4	171	15.70	139.2	
5	196	30.27	234.3	
6	212	43.97	314.3	
7	222	23.04	157.0	
8	236	45.55	292.1	
9	245	22.39	138.7	
10	264	62.21	356.4	
11	286	59.25	314.1	
12	313	37.78	182.7	
13	342	38.88	172.5	
14	353	29.55	127.0	
15	361	29.73	124.8	
16	375	41.68	168.5	
17	390	50.12	194.6	
18	406	51.42	191.8	
19	425	34.70	123.7	
20	442	58.24	199.6	
21	460	46.64	153.7	
22	478	51.61	163.4	
23	526	70.79	203.8	
24	549	63.21	174.5	
25	573	135.48	358.3	
26	619	63.74	156.0	

Assay Class: High Sensitivity DNA Assay
 Data Path: C:\...ents and Settings\Bioanalyzer\2013-04-09\2013-04-09_003.xad

Created: 4/9/2013 1:21:19 PM
 Modified: 4/9/2013 2:13:15 PM

Electropherogram Summary Continued ...

... Peak table for sample 9 : sample 19 Resoni 1:6

Peak	Size [bp]	Conc. [pg/μl]	Molarity [pmol/l]	Observations
27	664	97.50	222.4	
28	799	29.15	55.3	
29	907	129.98	217.0	
30	1,150	85.44	112.6	
31	1,630	10.10	9.4	
32	10,380	75.00	10.9	Upper Marker

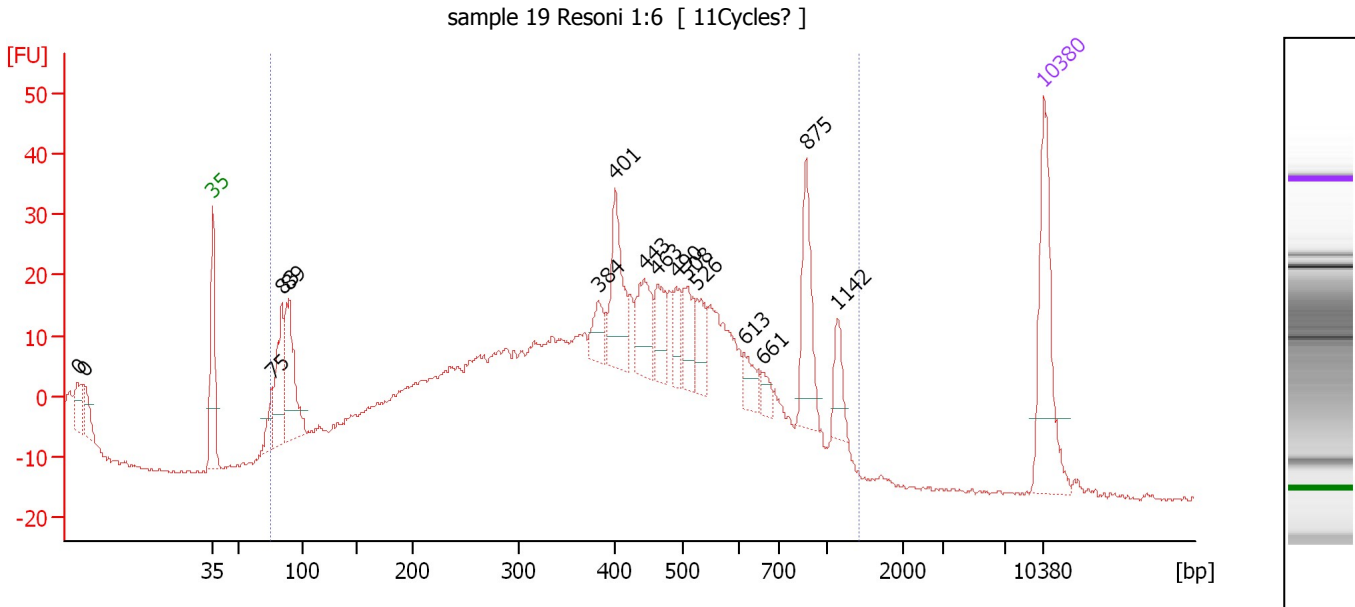
Region table for sample 9 : sample 19 Resoni 1:6

From [bp]	To [bp]	Average Size [bp]	Molarity [pmol/l]	Conc. [pg/μl]	Corr. Area	% of Total	Size distribution in CV [%]	Color
158	1,390	528	8,472.7	2,099.16	1,546.5	90	48.9	

Assay Class: High Sensitivity DNA Assay
 Data Path: C:\...ents and Settings\Bioanalyzer\2013-04-09\2013-04-09_003.xad

Created: 4/9/2013 1:21:19 PM
 Modified: 4/9/2013 2:13:15 PM

Electropherogram Summary Continued ...



Overall Results for sample 10 : sample 19 Resoni 1:6

Number of peaks found: 16 Corr. Area 1: 927.7
 Noise: 0.3

Peak table for sample 10 : sample 19 Resoni 1:6

Peak	Size [bp]	Conc. [pg/μl]	Molarity [pmol/l]	Observations
1	0	0.00	0.0	
2	0	0.00	0.0	
3	35	125.00	5,411.3	Lower Marker
4	75	22.00	441.9	
5	83	76.96	1,398.7	
6	89	98.12	1,674.3	
7	384	21.22	83.7	
8	401	64.08	242.1	
9	443	46.00	157.2	
10	463	30.55	100.0	
11	490	20.72	64.0	
12	508	32.50	96.9	
13	526	26.17	75.4	
14	613	16.72	41.4	
15	661	9.33	21.4	
16	875	59.05	102.2	
17	1,142	21.38	28.4	
18	10,380	75.00	10.9	Upper Marker

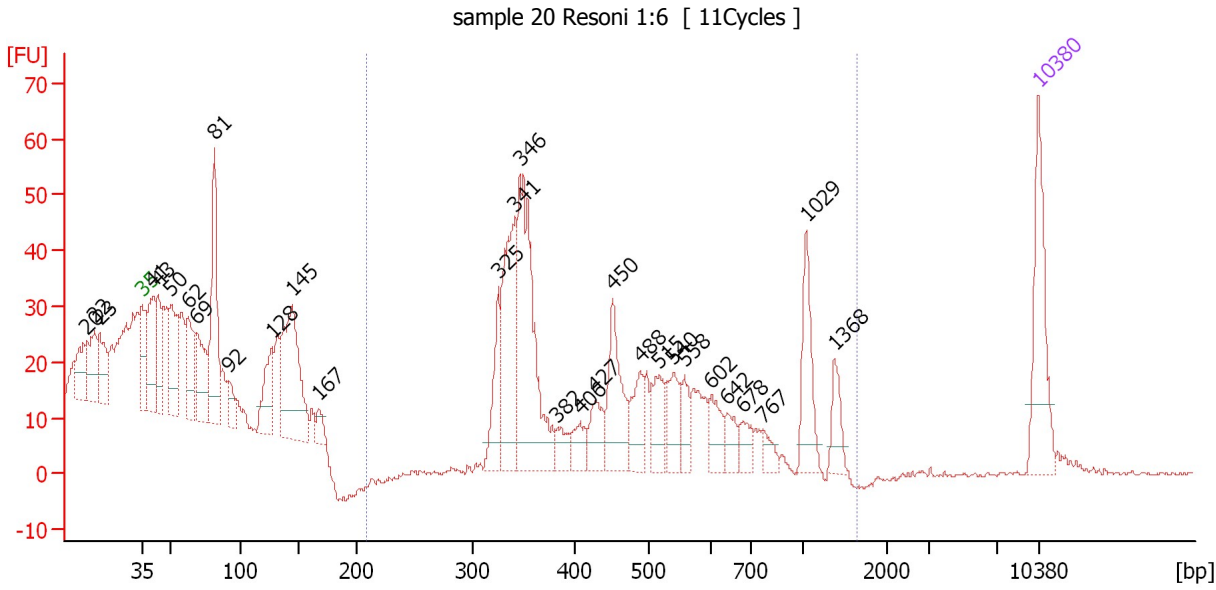
Region table for sample 10 : sample 19 Resoni 1:6

From [bp]	To [bp]	Average Size [bp]	Molarity [pmol/l]	Conc. [pg/μl]	Corr. Area	% of Total	Size distribution in CV [%]	Color
74	1,438	476	7,737.9	1,504.39	927.7	99	48.5	Blue

Assay Class: High Sensitivity DNA Assay
 Data Path: C:\...ents and Settings\Bioanalyzer\2013-04-09\2013-04-09_003.xad

Created: 4/9/2013 1:21:19 PM
 Modified: 4/9/2013 2:13:15 PM

Electropherogram Summary Continued ...



Overall Results for sample 11 : sample 20 Resoni 1:6

Number of peaks found: 30 Corr. Area 1: 277.0
 Noise: 0.4

Peak table for sample 11 : sample 20 Resoni 1:6

Peak	Size [bp]	Conc. [pg/μl]	Molarity [pmol/l]	Observations
1	20	0.00	0.0	
2	22	0.00	0.0	
3	23	0.00	0.0	
4	35	125.00	5,411.3	Lower Marker
5	41	106.57	3,981.1	
6	43	81.24	2,858.6	
7	50	104.19	3,174.5	
8	62	71.93	1,746.6	
9	69	92.30	2,027.5	
10	81	167.89	3,126.3	
11	92	31.79	524.7	
12	128	66.72	791.7	
13	145	183.00	1,918.5	
14	167	18.52	168.2	
15	325	59.04	274.9	
16	341	138.19	614.2	
17	346	232.23	1,016.9	
18	382	22.52	89.3	
19	406	24.28	90.6	
20	427	37.25	132.1	
21	450	84.09	282.9	
22	488	40.79	126.6	
23	515	43.18	126.9	
24	540	40.57	113.9	
25	558	23.28	63.2	
26	602	28.88	72.6	

Assay Class: High Sensitivity DNA Assay
 Data Path: C:\...ents and Settings\Bioanalyzer\2013-04-09\2013-04-09_003.xad

Created: 4/9/2013 1:21:19 PM
 Modified: 4/9/2013 2:13:15 PM

Electropherogram Summary Continued ...

... Peak table for sample 11 : sample 20 Resoni 1:6

Peak	Size [bp]	Conc. [pg/μl]	Molarity [pmol/l]	Observations
27	642	20.05	47.3	
28	678	20.59	46.0	
29	767	13.36	26.4	
30	1,029	57.78	85.1	
31	1,368	25.08	27.8	
32	10,380	75.00	10.9	Upper Marker

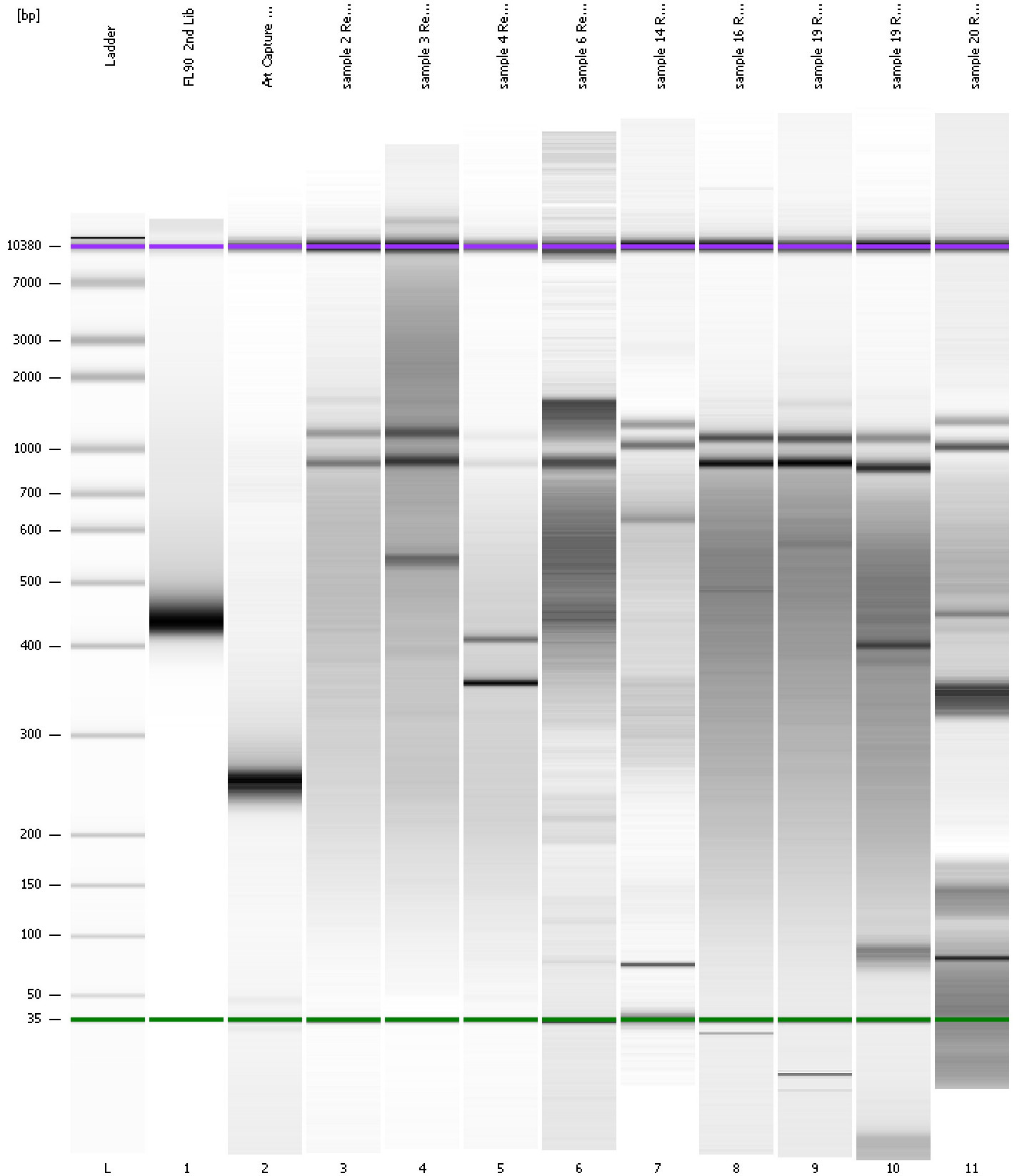
Region table for sample 11 : sample 20 Resoni 1:6

From [bp]	To [bp]	Average Size [bp]	Molarity [pmol/l]	Conc. [pg/μl]	Corr. Area	% of Total	Size distribution in CV [%]	Color
207	1,640	539	1,691.4	467.70	277.0	48	53.9	

Assay Class: High Sensitivity DNA Assay
Data Path: C:\...ents and Settings\Bioanalyzer\2013-04-09\2013-04-09_003.xad

Created: 4/9/2013 1:21:19 PM
Modified: 4/9/2013 2:13:15 PM

Gel Image

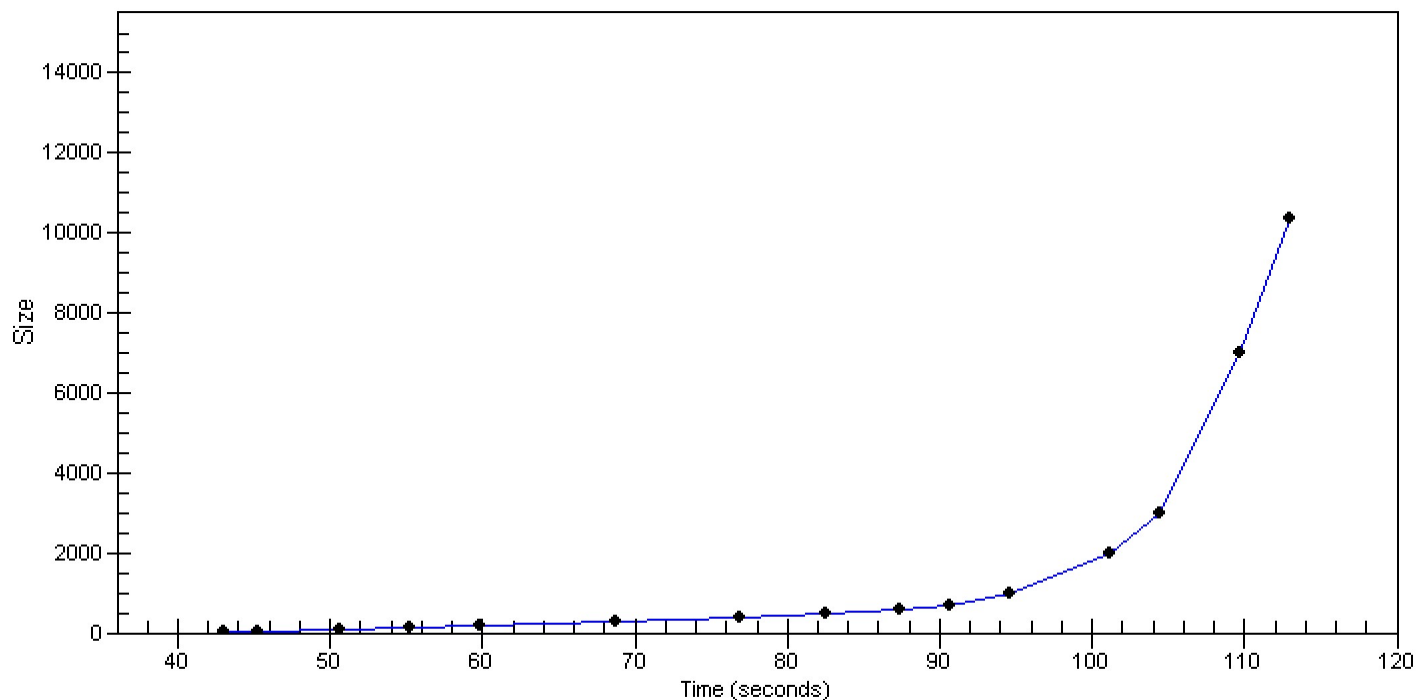


Assay Class: High Sensitivity DNA Assay
Data Path: C:\...ents and Settings\Bioanalyzer\2013-04-09\2013-04-09_003.xad

Created: 4/9/2013 1:21:19 PM
Modified: 4/9/2013 2:13:15 PM

Curves

Standard Curve



Assay Class: High Sensitivity DNA Assay Created: 4/9/2013 1:21:19 PM
 Data Path: C:\...ents and Settings\Bioanalyzer\2013-04-09\2013-04-09_003.xad Modified: 4/9/2013 2:13:15 PM

Run Logbook

Description	Number	Source	Category	Sub Category	Time	Time Zone	User	Host
Run ended on port 1 (Number of wells acquired: 12)		Instrument	Run		4/9/2013 2:02:38 PM	(GMT --07:00) Pacific Standard Time	UC Davis	D8XSMGH1
Run started on port 1 (File: C:\Documents and Settings\Bioanalyzer\2013-04-09\2013-04-09_003.xad)		Instrument	Run		4/9/2013 1:21:25 PM	(GMT --07:00) Pacific Standard Time	UC Davis	D8XSMGH1
Product Number : G2938B		Instrument	Run		4/9/2013 1:21:25 PM	(GMT --07:00) Pacific Standard Time	UC Davis	D8XSMGH1
Name :		Instrument	Run		4/9/2013 1:21:25 PM	(GMT --07:00) Pacific Standard Time	UC Davis	D8XSMGH1
Vendor : Agilent Technologies		Instrument	Run		4/9/2013 1:21:25 PM	(GMT --07:00) Pacific Standard Time	UC Davis	D8XSMGH1
Serial# : DE13701086		Instrument	Run		4/9/2013 1:21:25 PM	(GMT --07:00) Pacific Standard Time	UC Davis	D8XSMGH1
Firmware : C.01.069		Instrument	Run		4/9/2013 1:21:25 PM	(GMT --07:00) Pacific Standard Time	UC Davis	D8XSMGH1
Cartridge : Electrode		Instrument	Run		4/9/2013 1:21:25 PM	(GMT --07:00) Pacific Standard Time	UC Davis	D8XSMGH1