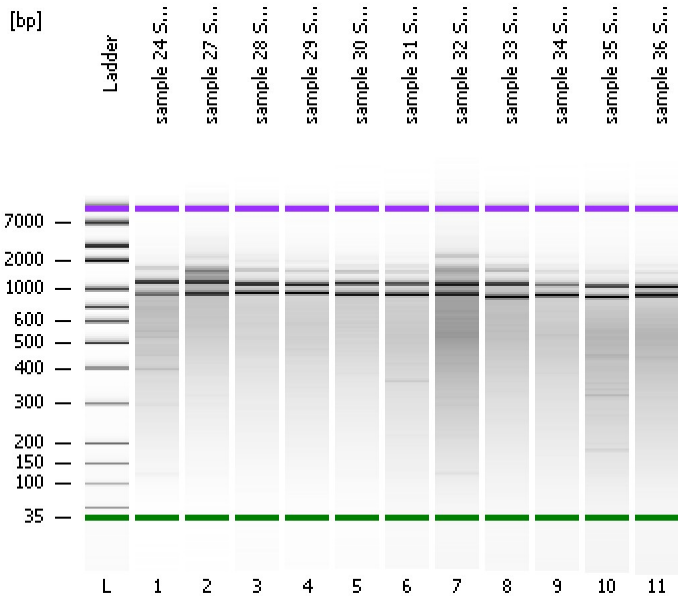


Assay Class: High Sensitivity DNA Assay
Data Path: C:\...ents and Settings\Bioanalyzer\2013-04-09\2013-04-09_005.xad

Created: 4/9/2013 5:07:48 PM
Modified: 4/9/2013 6:14:16 PM

Electrophoresis File Run Summary



Instrument Information:

Instrument Name: DE13701086 Firmware: C.01.069
Serial#: DE13701086 Type: G2938B

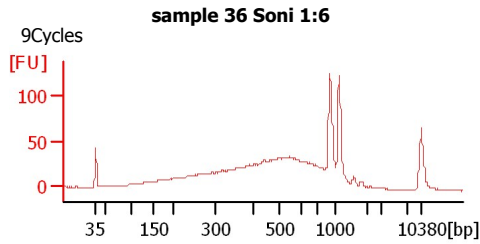
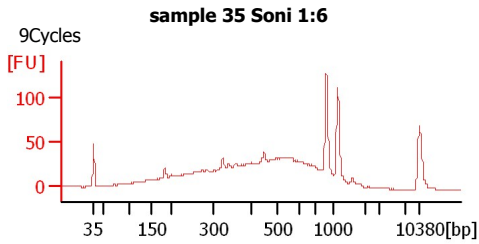
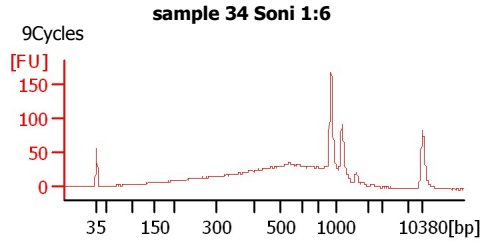
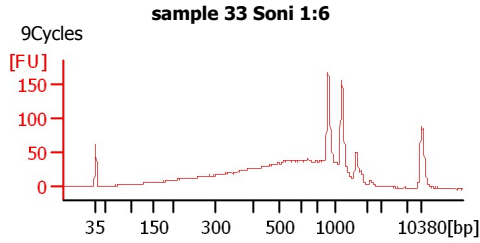
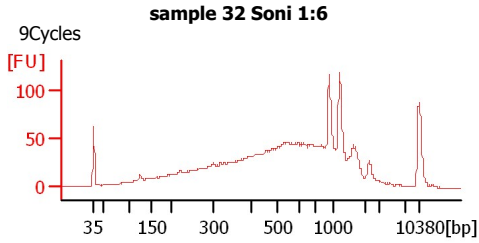
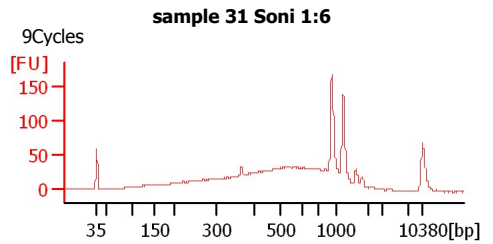
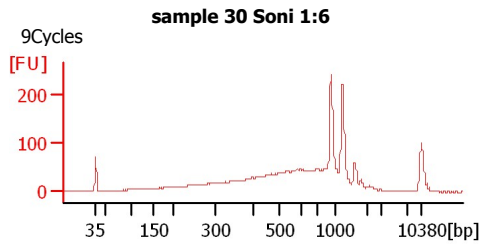
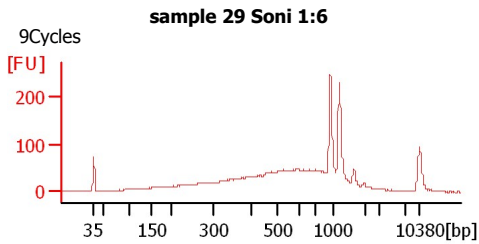
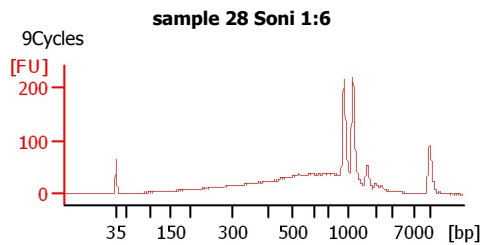
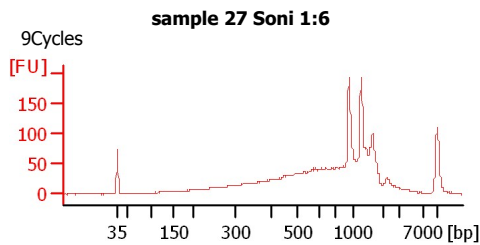
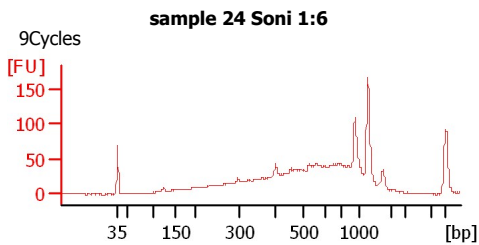
Assay Information:

Assay Origin Path: C:\Program Files\Agilent\2100 bioanalyzer\2100 expert\assays\dsDNA\High Sensitivity DNA.xsy

Assay Class: High Sensitivity DNA Assay
Version: 1.03
Assay Comments: Copyright © 2003-2010 Agilent Technologies

Chip Information:

Chip Lot #:
Reagent Kit Lot #:
Chip Comments:



Assay Class: High Sensitivity DNA Assay
Data Path: C:\...ents and Settings\Bioanalyzer\2013-04-09\2013-04-09_005.xad

Created: 4/9/2013 5:07:48 PM
Modified: 4/9/2013 6:14:16 PM

Electrophoresis File Run Summary (Chip Summary)

Sample Name	Sample Comment	Rest. Digest	Status	Observation	Result Label	Result Color
sample 24 Soni 1:6	9Cycles	<input type="checkbox"/>	✓			
sample 27 Soni 1:6	9Cycles	<input type="checkbox"/>	✓			
sample 28 Soni 1:6	9Cycles	<input type="checkbox"/>	✓			
sample 29 Soni 1:6	9Cycles	<input type="checkbox"/>	✓			
sample 30 Soni 1:6	9Cycles	<input type="checkbox"/>	✓			
sample 31 Soni 1:6	9Cycles	<input type="checkbox"/>	✓			
sample 32 Soni 1:6	9Cycles	<input type="checkbox"/>	✓			
sample 33 Soni 1:6	9Cycles	<input type="checkbox"/>	✓			
sample 34 Soni 1:6	9Cycles	<input type="checkbox"/>	✓			
sample 35 Soni 1:6	9Cycles	<input type="checkbox"/>	✓			
sample 36 Soni 1:6	9Cycles	<input type="checkbox"/>	✓			
Ladder		<input type="checkbox"/>	✓			

Chip Lot #

Reagent Kit Lot #

Chip Comments :

Assay Class: High Sensitivity DNA Assay
Data Path: C:\...ents and Settings\Bioanalyzer\2013-04-09\2013-04-09_005.xad

Created: 4/9/2013 5:07:48 PM
Modified: 4/9/2013 6:14:16 PM

Electrophoresis Assay Details

General Analysis Settings

Number of Available Sample and Ladder Wells (Max.) : 12
Minimum Visible Range [s] : 32
Maximum Visible Range [s] : 138
Start Analysis Time Range [s] : 33
End Analysis Time Range [s] : 137.5
Ladder Concentration [pg/μl] : 1950
Uses Standard Area for Ladder Fragments
Lower Marker Concentration [pg/μl] : 125
Upper Marker Concentration [pg/μl] : 75
Used Upper Marker for Quantitation
Standard Curve Fit is Point to Point
Show Data Aligned to Lower and Upper Marker

Integrator Settings

Integration Start Time [s] : 33.05
Integration End Time [s] : 137
Slope Threshold : 0.8
Height Threshold [FU] : 5
Area Threshold : 0.1
Width Threshold [s] : 0.6
Baseline Plateau [s] : 0.5

Filter Settings

Filter Width [s] : 0.5
Polynomial Order : 4

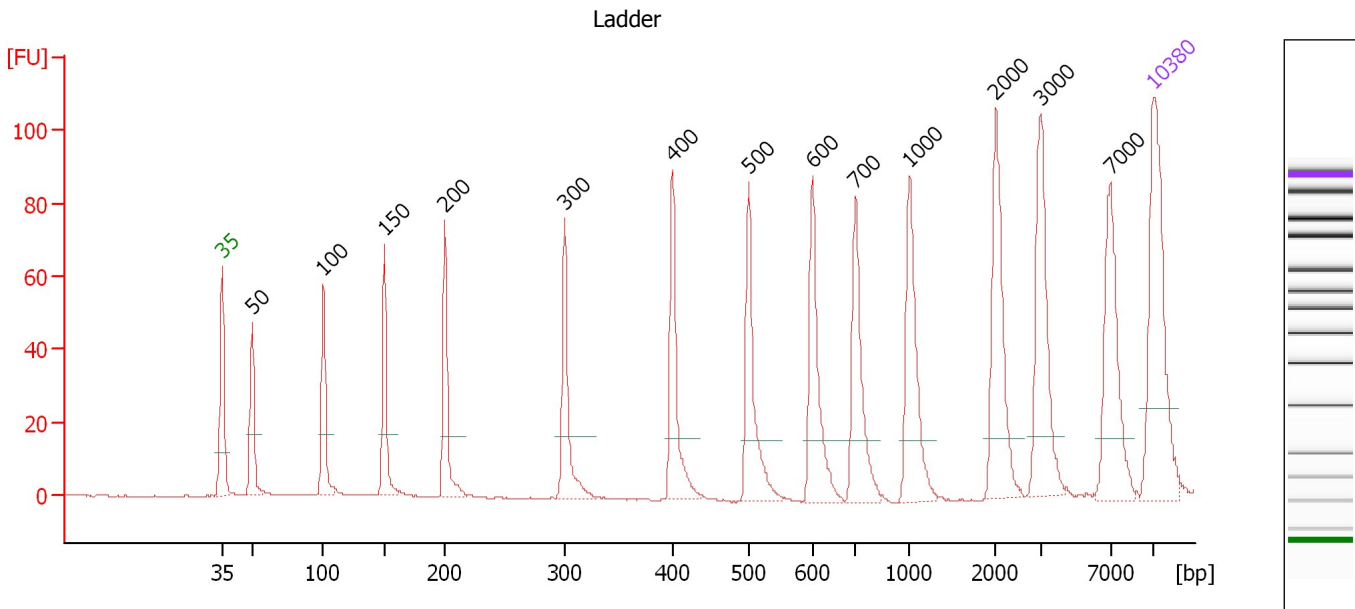
Ladder

Ladder Peak	Size	Area
1	35	160
2	50	210
3	100	208
4	150	221
5	200	242
6	300	270
7	400	305
8	500	306
9	600	336
10	700	321
11	1000	366
12	2000	413
13	3000	411
14	7000	400
15	10380	214

Assay Class: High Sensitivity DNA Assay
 Data Path: C:\...ents and Settings\Bioanalyzer\2013-04-09\2013-04-09_005.xad

Created: 4/9/2013 5:07:48 PM
 Modified: 4/9/2013 6:14:16 PM

Electropherogram Summary



Overall Results for Ladder

Noise: 0.2

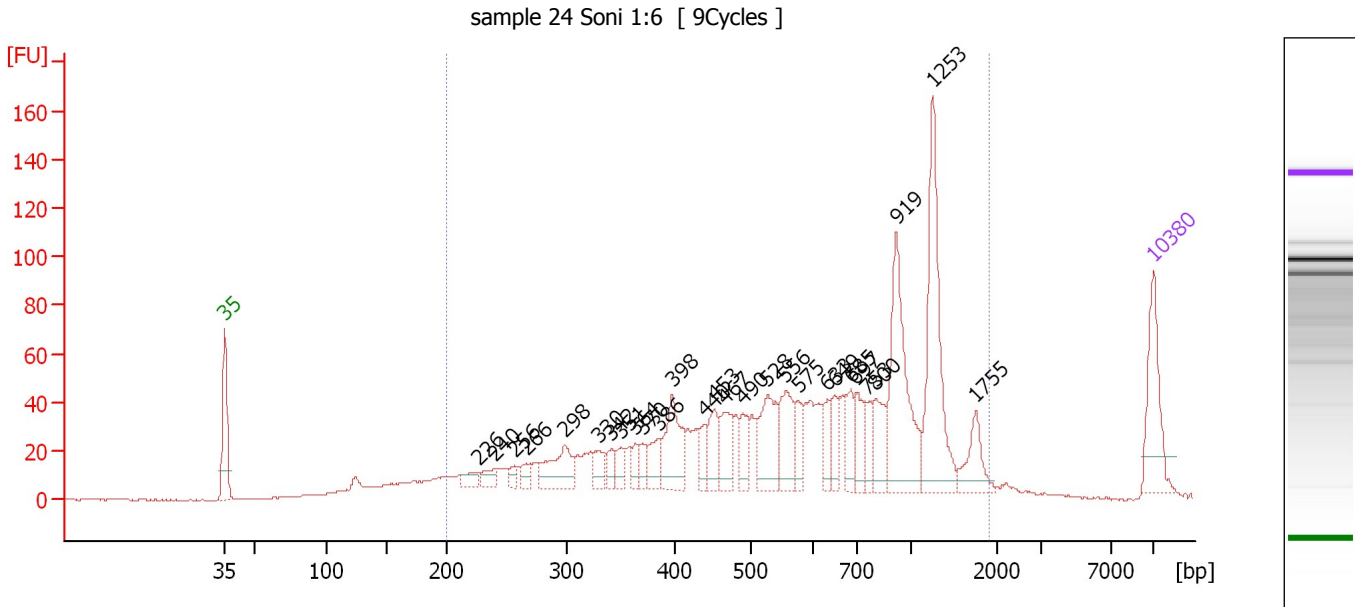
Peak table for Ladder

Peak	Size [bp]	Conc. [pg/μl]	Molarity [pmol/l]	Observations
1	35	125.00	5,411.3	Lower Marker
2	50	150.00	4,545.5	Ladder Peak
3	100	150.00	2,272.7	Ladder Peak
4	150	150.00	1,515.2	Ladder Peak
5	200	150.00	1,136.4	Ladder Peak
6	300	150.00	757.6	Ladder Peak
7	400	150.00	568.2	Ladder Peak
8	500	150.00	454.5	Ladder Peak
9	600	150.00	378.8	Ladder Peak
10	700	150.00	324.7	Ladder Peak
11	1,000	150.00	227.3	Ladder Peak
12	2,000	150.00	113.6	Ladder Peak
13	3,000	150.00	75.8	Ladder Peak
14	7,000	150.00	32.5	Ladder Peak
15	10,380	75.00	10.9	Upper Marker

Assay Class: High Sensitivity DNA Assay
 Data Path: C:\...ents and Settings\Bioanalyzer\2013-04-09\2013-04-09_005.xad

Created: 4/9/2013 5:07:48 PM
 Modified: 4/9/2013 6:14:16 PM

Electropherogram Summary Continued ...



Overall Results for sample 1 : sample 24 Soni 1:6

Number of peaks found: 28 Corr. Area 1: 1,601.8
 Noise: 0.1

Peak table for sample 1 : sample 24 Soni 1:6


Peak	Size [bp]	Conc. [pg/μl]	Molarity [pmol/l]	Observations
1	35	125.00	5,411.3	Lower Marker
2	226	20.45	137.2	
3	240	21.99	139.0	
4	256	14.83	87.7	
5	266	19.00	108.1	
6	298	77.75	395.3	
7	330	29.62	136.1	
8	342	19.41	86.1	
9	351	22.55	97.5	
10	364	18.38	76.6	
11	370	19.88	81.4	
12	386	37.76	148.4	
13	398	91.30	347.2	
14	440	29.24	100.7	
15	453	44.19	147.7	
16	467	57.44	186.5	
17	490	38.80	119.9	
18	528	93.30	267.9	
19	556	72.49	197.5	
20	575	32.35	85.2	
21	633	31.38	75.1	
22	649	30.86	72.1	
23	685	41.41	91.6	
24	697	42.22	91.8	
25	753	26.67	53.7	
26	800	51.41	97.3	

Assay Class: High Sensitivity DNA Assay
 Data Path: C:\...ents and Settings\Bioanalyzer\2013-04-09\2013-04-09_005.xad

Created: 4/9/2013 5:07:48 PM
 Modified: 4/9/2013 6:14:16 PM

Electropherogram Summary Continued ...

... Peak table for sample 1 : sample 24 Soni 1:6

Peak	Size [bp]	Conc. [pg/μl]	Molarity [pmol/l]	Observations
27	919	178.48	294.1	
28	1,253	184.20	222.7	
29	1,755	43.23	37.3	
30	 10,380	75.00	10.9	Upper Marker

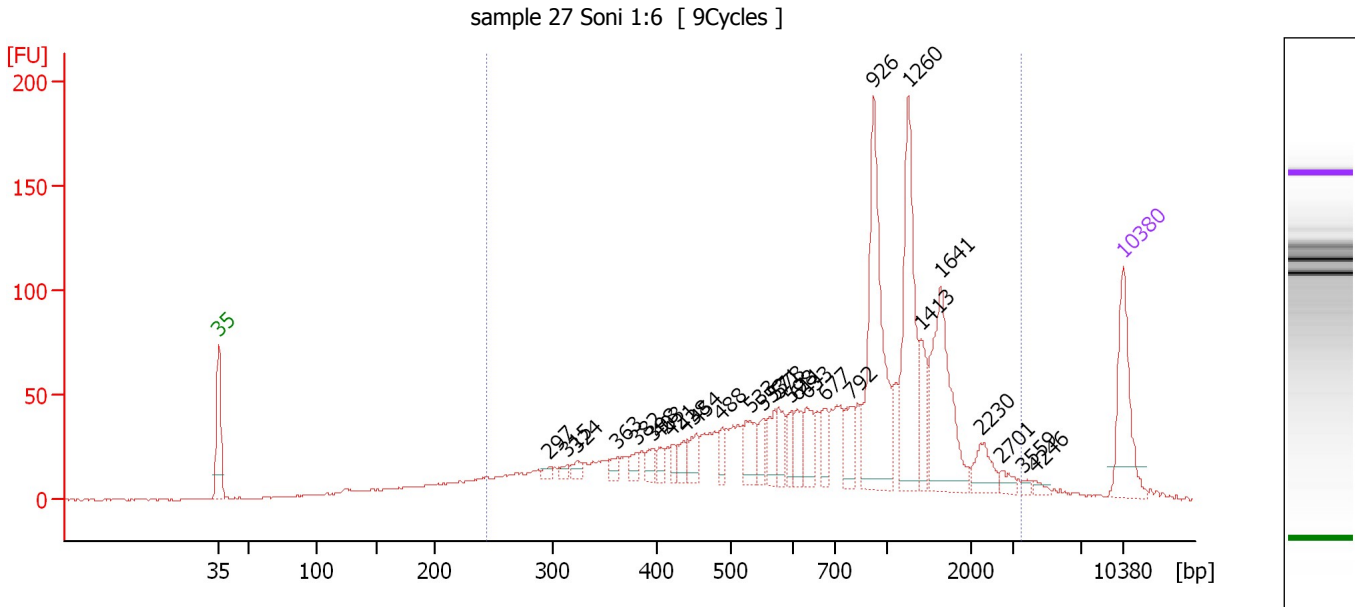
Region table for sample 1 : sample 24 Soni 1:6

From [bp]	To [bp]	Average Size [bp]	Molarity [pmol/l]	Conc. [pg/μl]	Corr. Area	% of Total	Size distribution in CV [%]	Color
200	1,905	697	6,328.3	1,977.83	1,601.8	92	54.1	

Assay Class: High Sensitivity DNA Assay
 Data Path: C:\...ents and Settings\Bioanalyzer\2013-04-09\2013-04-09_005.xad

Created: 4/9/2013 5:07:48 PM
 Modified: 4/9/2013 6:14:16 PM

Electropherogram Summary Continued ...



Overall Results for sample 2 : sample 27 Soni 1:6

Number of peaks found: 28 Corr. Area 1: 1,807.0
 Noise: 0.3

Peak table for sample 2 : sample 27 Soni 1:6


Peak	Size [bp]	Conc. [pg/μl]	Molarity [pmol/l]	Observations
1	35	125.00	5,411.3	Lower Marker
2	297	6.78	34.5	
3	315	7.91	38.1	
4	324	12.35	57.8	
5	363	12.36	51.7	
6	382	13.13	52.1	
7	398	17.52	66.8	
8	403	13.91	52.3	
9	421	14.14	50.9	
10	438	18.03	62.5	
11	454	26.57	88.6	
12	488	19.60	60.9	
13	533	43.26	123.0	
14	553	21.07	57.8	
15	571	27.27	72.3	
16	578	28.44	74.5	
17	598	22.37	56.7	
18	611	28.00	69.4	
19	633	36.65	87.8	
20	677	25.34	56.7	
21	792	31.64	60.6	
22	926	211.65	346.2	
23	1,260	161.10	193.7	
24	1,413	36.22	38.9	
25	1,641	135.42	125.0	
26	2,230	28.14	19.1	

Assay Class: High Sensitivity DNA Assay
 Data Path: C:\...ents and Settings\Bioanalyzer\2013-04-09\2013-04-09_005.xad


Created: 4/9/2013 5:07:48 PM
 Modified: 4/9/2013 6:14:16 PM

Electropherogram Summary Continued ...

... Peak table for sample 2 : sample 27 Soni 1:6

Peak	Size [bp]	Conc. [pg/μl]	Molarity [pmol/l]	Observations
27	2,701	9.10	5.1	
28	3,559	3.79	1.6	
29	4,246	4.85	1.7	
30	 10,380	75.00	10.9	Upper Marker

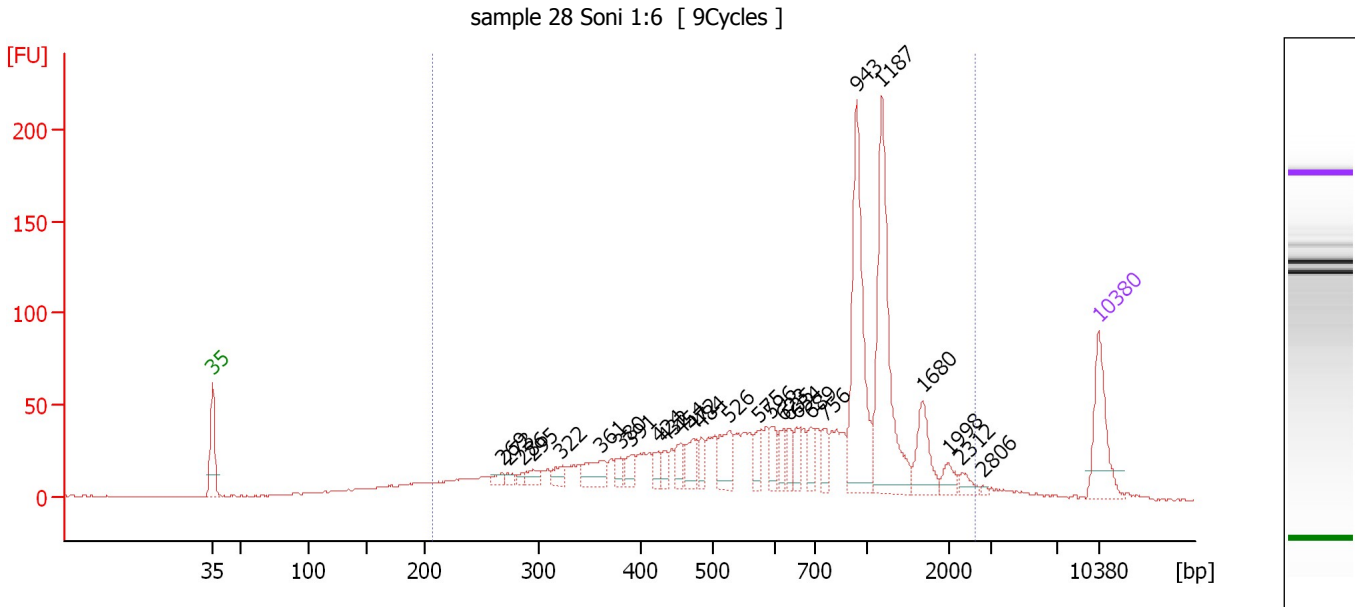
Region table for sample 2 : sample 27 Soni 1:6

From [bp]	To [bp]	Average Size [bp]	Molarity [pmol/l]	Conc. [pg/μl]	Corr. Area	% of Total	Size distribution in CV [%]	Color
245	3,423	927	4,239.4	1,659.45	1,807.0	91	58.5	

Assay Class: High Sensitivity DNA Assay
 Data Path: C:\...ents and Settings\Bioanalyzer\2013-04-09\2013-04-09_005.xad

Created: 4/9/2013 5:07:48 PM
 Modified: 4/9/2013 6:14:16 PM

Electropherogram Summary Continued ...



Overall Results for sample 3 : sample 28 Soni 1:6

Number of peaks found: 27 Corr. Area 1: 1,681.7
 Noise: 0.4

Peak table for sample 3 : sample 28 Soni 1:6


Peak	Size [bp]	Conc. [pg/μl]	Molarity [pmol/l]	Observations
1	35	125.00	5,411.3	Lower Marker
2	269	12.92	72.8	
3	273	9.90	54.9	
4	286	9.64	51.1	
5	295	19.62	100.8	
6	322	21.29	100.1	
7	361	47.13	197.6	
8	380	20.10	80.1	
9	391	23.74	92.1	
10	424	20.72	74.1	
11	432	18.62	65.3	
12	454	25.95	86.5	
13	472	43.33	139.1	
14	484	22.51	70.5	
15	526	54.86	157.9	
16	575	28.84	76.1	
17	596	29.51	75.1	
18	623	23.11	56.2	
19	635	23.64	56.4	
20	654	27.53	63.7	
21	689	24.26	53.3	
22	756	28.41	57.0	
23	943	232.17	373.0	
24	1,187	238.99	305.2	
25	1,680	56.52	51.0	
26	1,998	17.80	13.5	

Assay Class: High Sensitivity DNA Assay
 Data Path: C:\...ents and Settings\Bioanalyzer\2013-04-09\2013-04-09_005.xad

Created: 4/9/2013 5:07:48 PM
 Modified: 4/9/2013 6:14:16 PM

Electropherogram Summary Continued ...

... Peak table for sample 3 : sample 28 Soni 1:6

Peak	Size [bp]	Conc. [pg/μl]	Molarity [pmol/l]	Observations
27	2,312	13.02	8.5	
28	2,806	2.83	1.5	
29	 10,380	75.00	10.9	Upper Marker

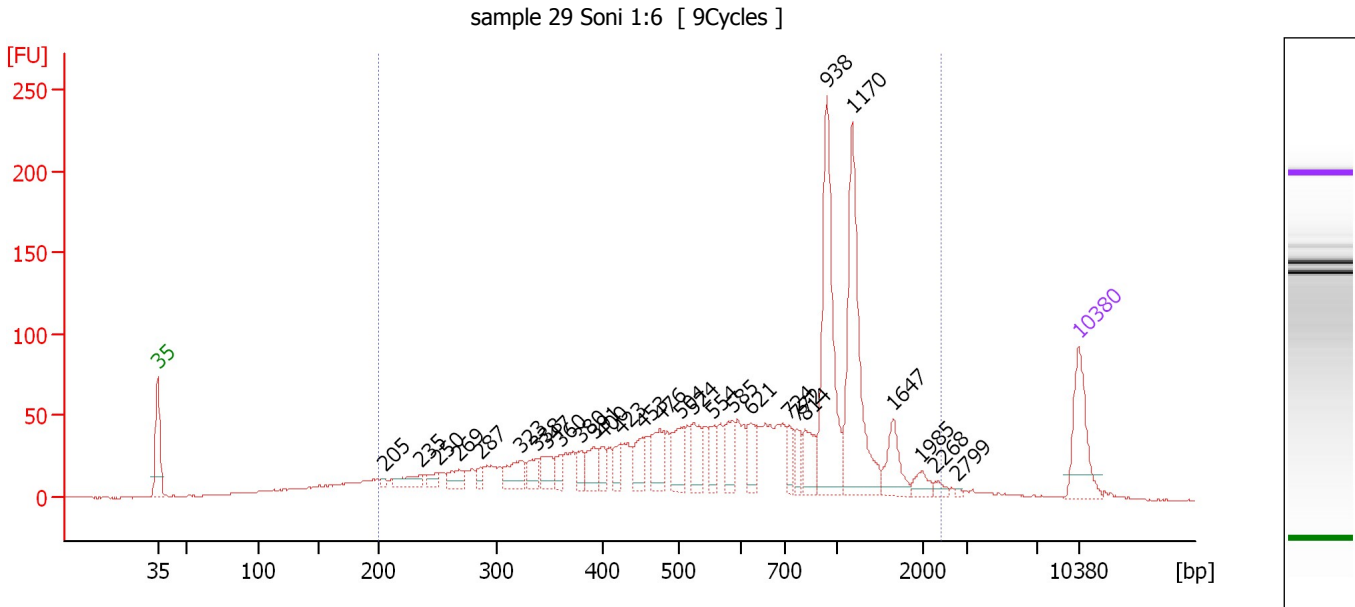
Region table for sample 3 : sample 28 Soni 1:6

From [bp]	To [bp]	Average Size [bp]	Molarity [pmol/l]	Conc. [pg/μl]	Corr. Area	% of Total	Size distribution in CV [%]	Color
206	2,645	809	5,338.1	1,850.18	1,681.7	92	56.0	

Assay Class: High Sensitivity DNA Assay
 Data Path: C:\...ents and Settings\Bioanalyzer\2013-04-09\2013-04-09_005.xad

Created: 4/9/2013 5:07:48 PM
 Modified: 4/9/2013 6:14:16 PM

Electropherogram Summary Continued ...



Overall Results for sample 4 : sample 29 Soni 1:6

Number of peaks found: 29 Corr. Area 1: 1,967.5
 Noise: 0.3

Peak table for sample 4 : sample 29 Soni 1:6

Peak	Size [bp]	Conc. [pg/µl]	Molarity [pmol/l]	Observations
1	35	125.00	5,411.3	Lower Marker
2	205	6.20	45.9	
3	235	31.60	203.6	
4	250	16.90	102.2	
5	269	29.14	164.4	
6	287	13.62	72.0	
7	323	46.95	220.6	
8	338	30.74	137.8	
9	347	36.22	158.3	
10	360	20.39	85.8	
11	380	25.39	101.3	
12	391	39.36	152.4	
13	400	22.04	83.5	
14	423	24.33	87.1	
15	453	41.80	139.9	
16	476	52.45	167.0	
17	504	53.98	162.2	
18	524	49.11	142.0	
19	554	33.26	91.0	
20	585	40.51	104.9	
21	621	38.66	94.3	
22	724	26.79	56.0	
23	772	24.75	48.6	
24	814	44.77	83.4	
25	938	229.11	370.1	
26	1,170	222.94	288.8	

Assay Class: High Sensitivity DNA Assay
 Data Path: C:\...ents and Settings\Bioanalyzer\2013-04-09\2013-04-09_005.xad


Created: 4/9/2013 5:07:48 PM
 Modified: 4/9/2013 6:14:16 PM

Electropherogram Summary Continued ...

... Peak table for sample 4 : sample 29 Soni 1:6

Peak	Size [bp]	Conc. [pg/μl]	Molarity [pmol/l]	Observations
27	1,647	46.37	42.7	
28	1,985	15.95	12.2	
29	2,268	7.08	4.7	
30	2,799	2.12	1.1	
31	10,380	75.00	10.9	Upper Marker

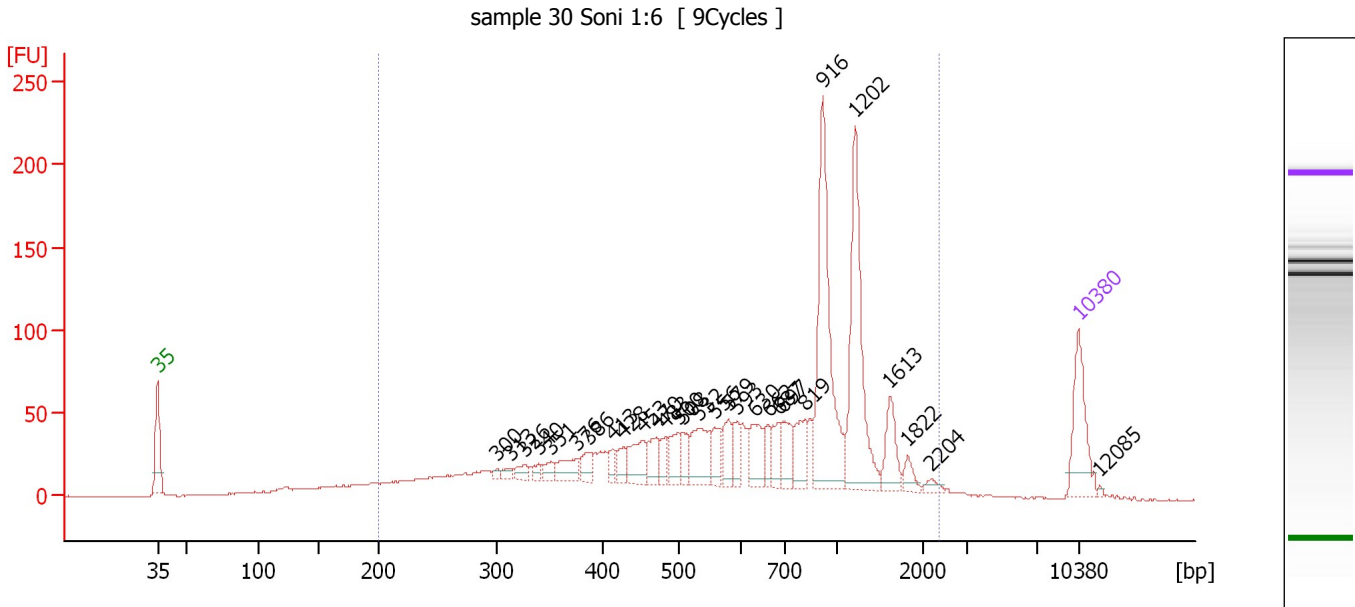
Region table for sample 4 : sample 29 Soni 1:6

From [bp]	To [bp]	Average Size [bp]	Molarity [pmol/l]	Conc. [pg/μl]	Corr. Area	% of Total	Size distribution in CV [%]	Color
200	2,398	739	6,295.8	2,038.12	1,967.5	91	54.9	

Assay Class: High Sensitivity DNA Assay
 Data Path: C:\...ents and Settings\Bioanalyzer\2013-04-09\2013-04-09_005.xad

Created: 4/9/2013 5:07:48 PM
 Modified: 4/9/2013 6:14:16 PM

Electropherogram Summary Continued ...



Overall Results for sample 5 : sample 30 Soni 1:6

Number of peaks found: 29 Corr. Area 1: 1,838.2
 Noise: 0.4

Peak table for sample 5 : sample 30 Soni 1:6

Peak	Size [bp]	Conc. [pg/μl]	Molarity [pmol/l]	Observations
1	35	125.00	5,411.3	Lower Marker
2	300	6.44	32.5	
3	313	9.64	46.6	
4	326	15.99	74.3	
5	340	10.57	47.1	
6	351	15.83	68.4	
7	376	35.39	142.7	
8	386	26.73	104.8	
9	413	16.69	61.2	
10	428	23.06	81.7	
11	453	52.92	176.8	
12	470	35.26	113.6	
13	483	24.27	76.1	
14	500	33.19	100.6	
15	508	26.38	78.7	
16	532	67.76	193.1	
17	556	36.77	100.1	
18	579	36.92	96.6	
19	593	28.75	73.5	
20	630	54.21	130.5	
21	662	25.27	57.8	
22	687	30.37	66.9	
23	697	41.60	90.4	
24	819	45.47	84.1	
25	916	257.73	426.3	
26	1,202	207.30	261.3	

Assay Class: High Sensitivity DNA Assay
 Data Path: C:\...ents and Settings\Bioanalyzer\2013-04-09\2013-04-09_005.xad

Created: 4/9/2013 5:07:48 PM
 Modified: 4/9/2013 6:14:16 PM

Electropherogram Summary Continued ...

... Peak table for sample 5 : sample 30 Soni 1:6

Peak	Size [bp]	Conc. [pg/μl]	Molarity [pmol/l]	Observations
27	1,613	45.41	42.7	
28	1,822	15.50	12.9	
29	2,204	7.92	5.4	
30	10,380	75.00	10.9	Upper Marker
31	12,085	0.00	0.0	

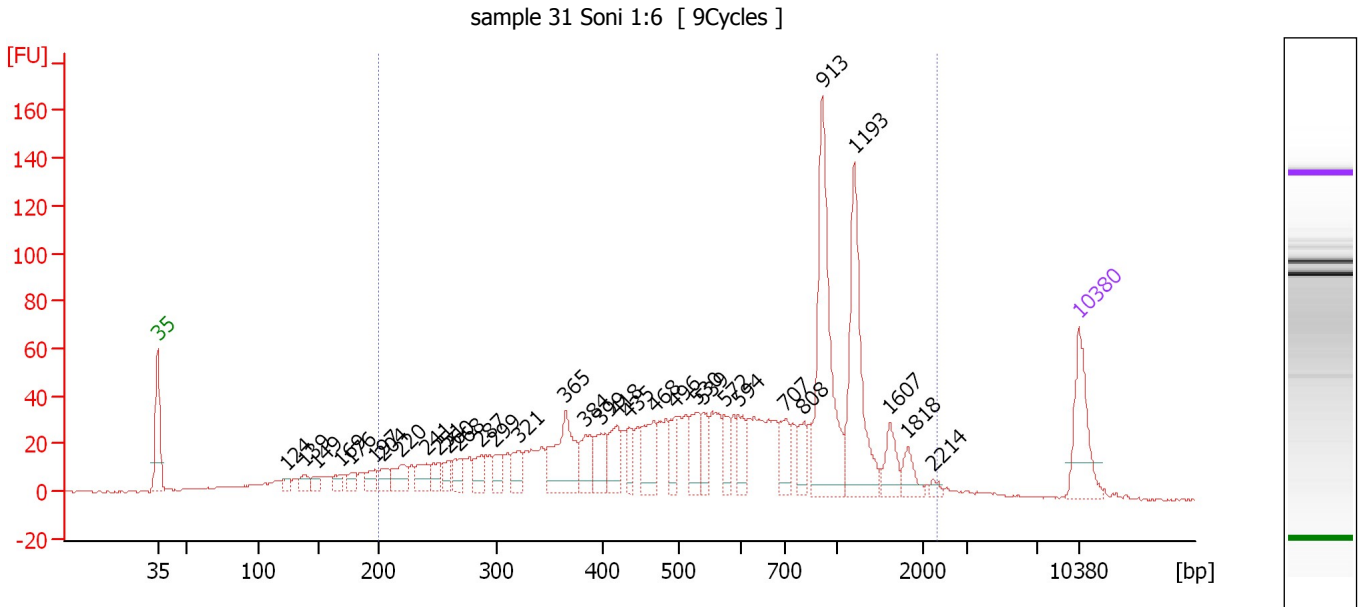
Region table for sample 5 : sample 30 Soni 1:6

From [bp]	To [bp]	Average Size [bp]	Molarity [pmol/l]	Conc. [pg/μl]	Corr. Area	% of Total	Size distribution in CV [%]	Color
200	2,346	764	5,732.9	1,939.39	1,838.2	92	53.0	

Assay Class: High Sensitivity DNA Assay
 Data Path: C:\...ents and Settings\Bioanalyzer\2013-04-09\2013-04-09_005.xad

Created: 4/9/2013 5:07:48 PM
 Modified: 4/9/2013 6:14:16 PM

Electropherogram Summary Continued ...



Overall Results for sample 6 : sample 31 Soni 1:6

Number of peaks found: 33 Corr. Area 1: 1,474.1
 Noise: 0.4

Peak table for sample 6 : sample 31 Soni 1:6

Peak	Size [bp]	Conc. [pg/μl]	Molarity [pmol/l]	Observations
1	35	125.00	5,411.3	Lower Marker
2	124	12.79	156.5	
3	139	20.15	220.0	
4	149	16.58	168.2	
5	169	15.25	136.6	
6	176	18.82	161.6	
7	197	23.16	178.5	
8	204	24.58	182.6	
9	220	43.43	299.6	
10	241	37.89	238.6	
11	251	26.76	161.6	
12	260	24.80	144.4	
13	268	29.58	167.2	
14	287	37.53	198.1	
15	299	27.83	141.1	
16	321	36.12	170.7	
17	365	121.91	506.2	
18	384	51.27	202.6	
19	399	52.23	198.4	
20	418	56.01	202.8	
21	435	30.15	105.0	
22	468	65.75	213.1	
23	496	33.80	103.2	
24	530	52.47	150.0	
25	539	36.28	101.9	
26	572	33.45	88.6	

Assay Class: High Sensitivity DNA Assay
 Data Path: C:\...ents and Settings\Bioanalyzer\2013-04-09\2013-04-09_005.xad


Created: 4/9/2013 5:07:48 PM
 Modified: 4/9/2013 6:14:16 PM

Electropherogram Summary Continued ...

... Peak table for sample 6 : sample 31 Soni 1:6

Peak	Size [bp]	Conc. [pg/μl]	Molarity [pmol/l]	Observations
27	594	39.09	99.7	
28	707	39.34	84.3	
29	808	33.57	62.9	
30	913	250.65	416.0	
31	1,193	182.30	231.6	
32	1,607	34.85	32.9	
33	1,818	24.11	20.1	
34	2,214	6.54	4.5	
35	10,380	75.00	10.9	Upper Marker

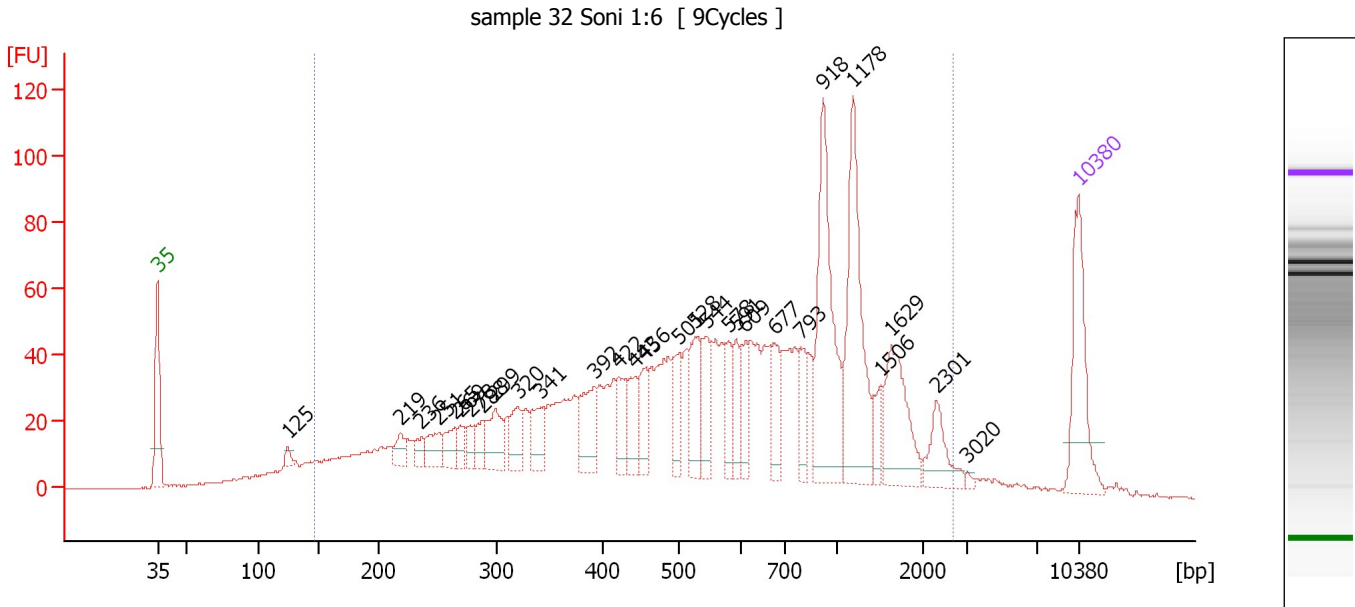
Region table for sample 6 : sample 31 Soni 1:6

From [bp]	To [bp]	Average Size [bp]	Molarity [pmol/l]	Conc. [pg/μl]	Corr. Area	% of Total	Size distribution in CV [%]	Color
200	2,331	702	6,760.0	2,087.54	1,474.1	90	56.0	

Assay Class: High Sensitivity DNA Assay
 Data Path: C:\...ents and Settings\Bioanalyzer\2013-04-09\2013-04-09_005.xad

Created: 4/9/2013 5:07:48 PM
 Modified: 4/9/2013 6:14:16 PM

Electropherogram Summary Continued ...



Overall Results for sample 7 : sample 32 Soni 1:6

Number of peaks found: 29 Corr. Area 1: 1,970.4
 Noise: 0.3

Peak table for sample 7 : sample 32 Soni 1:6

Peak	Size [bp]	Conc. [pg/μl]	Molarity [pmol/l]	Observations
1	35	125.00	5,411.3	Lower Marker
2	125	9.40	114.1	
3	219	19.56	135.1	
4	236	15.78	101.1	
5	251	29.93	180.5	
6	265	25.06	143.3	
7	269	15.82	89.0	
8	278	15.96	86.9	
9	288	23.14	121.9	
10	299	44.94	227.7	
11	320	34.22	162.1	
12	341	38.50	171.0	
13	392	58.86	227.6	
14	422	38.62	138.7	
15	443	38.45	131.6	
16	456	36.54	121.4	
17	501	41.14	124.4	
18	528	57.08	163.9	
19	544	46.68	130.0	
20	578	31.28	82.0	
21	591	32.92	84.4	
22	609	30.23	75.2	
23	677	39.33	88.0	
24	793	32.26	61.6	
25	918	159.92	264.0	
26	1,178	146.54	188.5	

Assay Class: High Sensitivity DNA Assay
 Data Path: C:\...ents and Settings\Bioanalyzer\2013-04-09\2013-04-09_005.xad


Created: 4/9/2013 5:07:48 PM
 Modified: 4/9/2013 6:14:16 PM

Electropherogram Summary Continued ...

... Peak table for sample 7 : sample 32 Soni 1:6

Peak	Size [bp]	Conc. [pg/μl]	Molarity [pmol/l]	Observations
27	1,506	18.28	18.4	
28	1,629	76.17	70.9	
29	2,301	34.54	22.7	
30	3,020	2.44	1.2	
31	10,380	75.00	10.9	Upper Marker

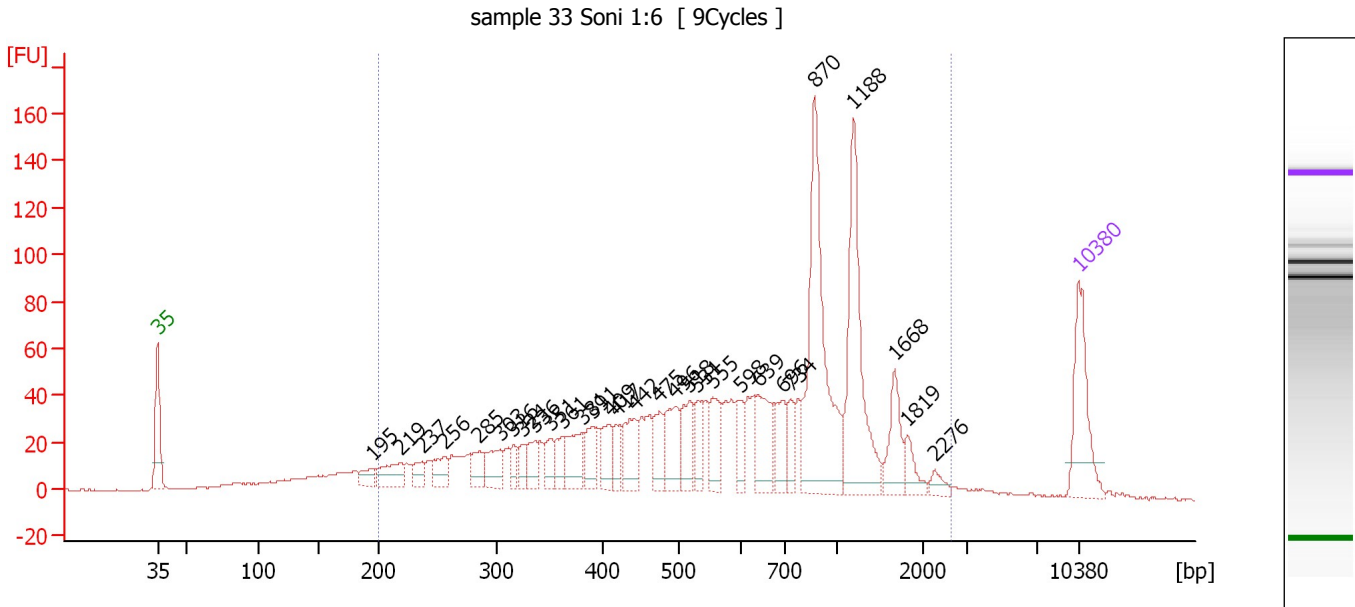
Region table for sample 7 : sample 32 Soni 1:6

From [bp]	To [bp]	Average Size [bp]	Molarity [pmol/l]	Conc. [pg/μl]	Corr. Area	% of Total	Size distribution in CV [%]	Color
147	2,677	720	8,275.4	2,303.15	1,970.4	93	66.5	

Assay Class: High Sensitivity DNA Assay
 Data Path: C:\...ents and Settings\Bioanalyzer\2013-04-09\2013-04-09_005.xad

Created: 4/9/2013 5:07:48 PM
 Modified: 4/9/2013 6:14:16 PM

Electropherogram Summary Continued ...



Overall Results for sample 8 : sample 33 Soni 1:6

Number of peaks found: 30 Corr. Area 1: 1,719.1
 Noise: 0.2

Peak table for sample 8 : sample 33 Soni 1:6

Peak	Size [bp]	Conc. [pg/μl]	Molarity [pmol/l]	Observations
1	35	125.00	5,411.3	Lower Marker
2	195	19.22	149.4	
3	219	42.05	291.4	
4	237	22.02	140.8	
5	256	31.55	187.0	
6	285	27.24	144.7	
7	303	40.39	201.7	
8	316	18.46	88.6	
9	324	18.87	88.1	
10	336	28.66	129.2	
11	351	25.82	111.3	
12	361	26.53	111.2	
13	381	49.49	196.7	
14	391	33.33	129.3	
15	409	37.41	138.4	
16	417	27.12	98.5	
17	442	50.96	174.7	
18	475	36.67	116.9	
19	496	59.99	183.4	
20	518	50.61	148.1	
21	531	29.07	83.0	
22	555	46.20	126.1	
23	598	28.72	72.8	
24	639	65.16	154.6	
25	696	40.89	89.0	
26	734	28.36	58.5	

Assay Class: High Sensitivity DNA Assay
 Data Path: C:\...ents and Settings\Bioanalyzer\2013-04-09\2013-04-09_005.xad

Created: 4/9/2013 5:07:48 PM
 Modified: 4/9/2013 6:14:16 PM

Electropherogram Summary Continued ...

... Peak table for sample 8 : sample 33 Soni 1:6

Peak	Size [bp]	Conc. [pg/μl]	Molarity [pmol/l]	Observations
27	870	241.18	420.2	
28	1,188	169.35	215.9	
29	1,668	44.60	40.5	
30	1,819	20.62	17.2	
31	2,276	10.42	6.9	
32	10,380	75.00	10.9	Upper Marker

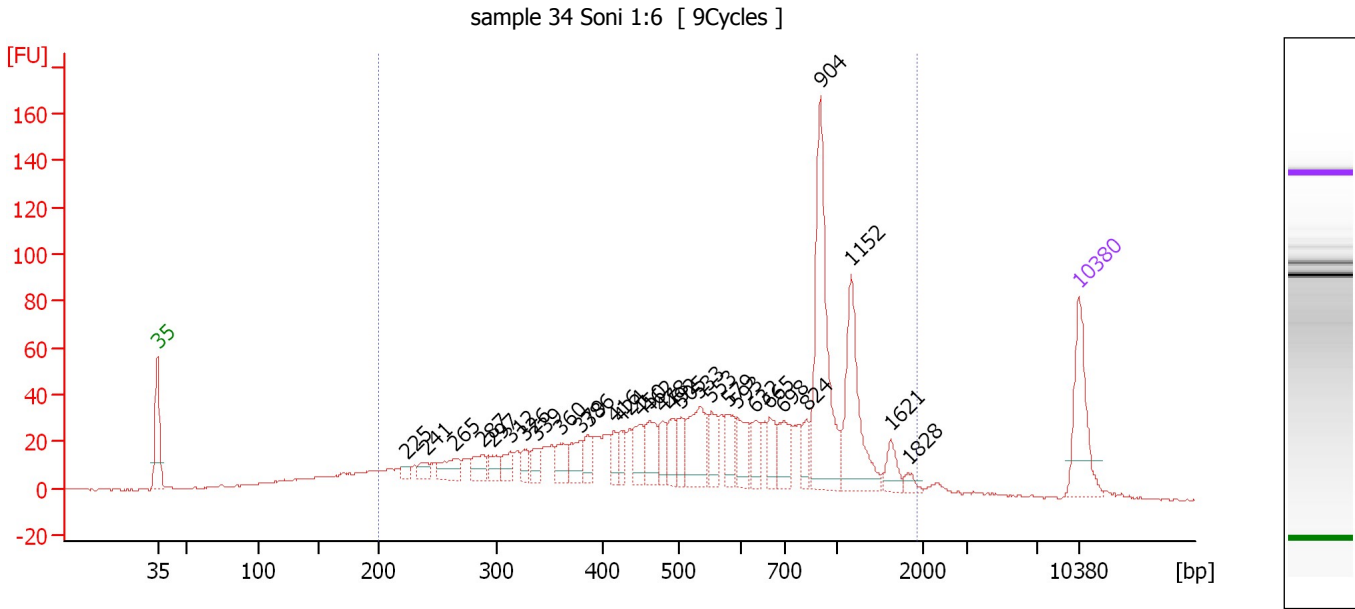
Region table for sample 8 : sample 33 Soni 1:6

From [bp]	To [bp]	Average Size [bp]	Molarity [pmol/l]	Conc. [pg/μl]	Corr. Area	% of Total	Size distribution in CV [%]	Color
200	2,625	731	5,759.0	1,823.85	1,719.1	90	58.3	

Assay Class: High Sensitivity DNA Assay
 Data Path: C:\...ents and Settings\Bioanalyzer\2013-04-09\2013-04-09_005.xad

Created: 4/9/2013 5:07:48 PM
 Modified: 4/9/2013 6:14:16 PM

Electropherogram Summary Continued ...



Overall Results for sample 9 : sample 34 Soni 1:6

Number of peaks found: 30 Corr. Area 1: 1,373.0
 Noise: 0.3

Peak table for sample 9 : sample 34 Soni 1:6

Peak	Size [bp]	Conc. [pg/μl]	Molarity [pmol/l]	Observations
1	35	125.00	5,411.3	Lower Marker
2	225	10.55	71.1	
3	241	17.36	109.3	
4	265	34.31	196.2	
5	287	30.54	161.1	
6	297	20.36	103.9	
7	312	23.51	114.0	
8	326	18.59	86.5	
9	339	22.85	102.2	
10	360	29.44	123.8	
11	379	34.00	136.1	
12	386	25.51	100.2	
13	416	22.17	80.8	
14	424	22.62	80.9	
15	450	41.79	140.6	
16	462	45.47	149.1	
17	478	27.68	87.7	
18	492	32.70	100.7	
19	505	28.97	86.9	
20	533	77.81	221.2	
21	553	33.13	90.8	
22	579	37.44	98.0	
23	593	39.48	101.0	
24	632	33.54	80.4	
25	665	32.67	74.4	
26	698	38.77	84.2	

Assay Class: High Sensitivity DNA Assay
 Data Path: C:\...ents and Settings\Bioanalyzer\2013-04-09\2013-04-09_005.xad


Created: 4/9/2013 5:07:48 PM
 Modified: 4/9/2013 6:14:16 PM

Electropherogram Summary Continued ...

... Peak table for sample 9 : sample 34 Soni 1:6

Peak	Size [bp]	Conc. [pg/μl]	Molarity [pmol/l]	Observations
27	824	23.45	43.1	
28	904	211.84	355.0	
29	1,152	120.87	158.9	
30	1,621	21.92	20.5	
31	1,828	8.27	6.9	
32	10,380	75.00	10.9	Upper Marker

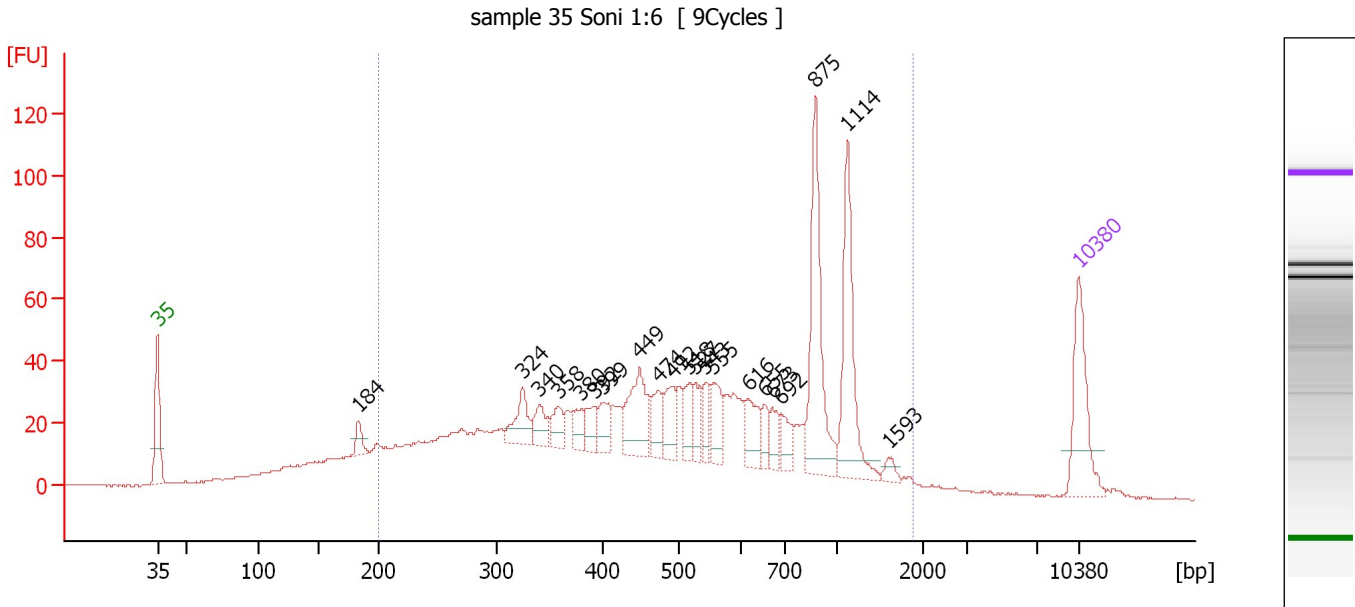
Region table for sample 9 : sample 34 Soni 1:6

From [bp]	To [bp]	Average Size [bp]	Molarity [pmol/l]	Conc. [pg/μl]	Corr. Area	% of Total	Size distribution in CV [%]	Color
200	1,920	659	5,772.0	1,749.52	1,373.0	89	52.1	

Assay Class: High Sensitivity DNA Assay
 Data Path: C:\...ents and Settings\Bioanalyzer\2013-04-09\2013-04-09_005.xad

Created: 4/9/2013 5:07:48 PM
 Modified: 4/9/2013 6:14:16 PM

Electropherogram Summary Continued ...



Overall Results for sample 10 : sample 35 Soni 1:6

Number of peaks found: 21 Corr. Area 1: 1,376.5
 Noise: 0.2

Peak table for sample 10 : sample 35 Soni 1:6

Peak	Size [bp]	Conc. [pg/μl]	Molarity [pmol/l]	Observations
1	35	125.00	5,411.3	Lower Marker
2	184	19.06	157.1	
3	324	45.71	213.7	
4	340	29.47	131.4	
5	358	27.58	116.6	
6	380	22.40	89.3	
7	392	24.98	96.5	
8	399	30.26	114.9	
9	449	80.20	270.6	
10	474	34.53	110.4	
11	492	40.68	125.2	
12	518	31.02	90.8	
13	527	27.02	77.6	
14	543	25.13	70.1	
15	555	40.76	111.2	
16	616	38.88	95.7	
17	655	18.26	42.3	
18	673	21.31	48.0	
19	692	25.67	56.2	
20	875	152.41	264.0	
21	1,114	122.41	166.4	
22	1,593	8.64	8.2	
23	10,380	75.00	10.9	Upper Marker

Assay Class: High Sensitivity DNA Assay
Data Path: C:\...ents and Settings\Bioanalyzer\2013-04-09\2013-04-09_005.xad

Created: 4/9/2013 5:07:48 PM
Modified: 4/9/2013 6:14:16 PM

Electropherogram Summary Continued ...

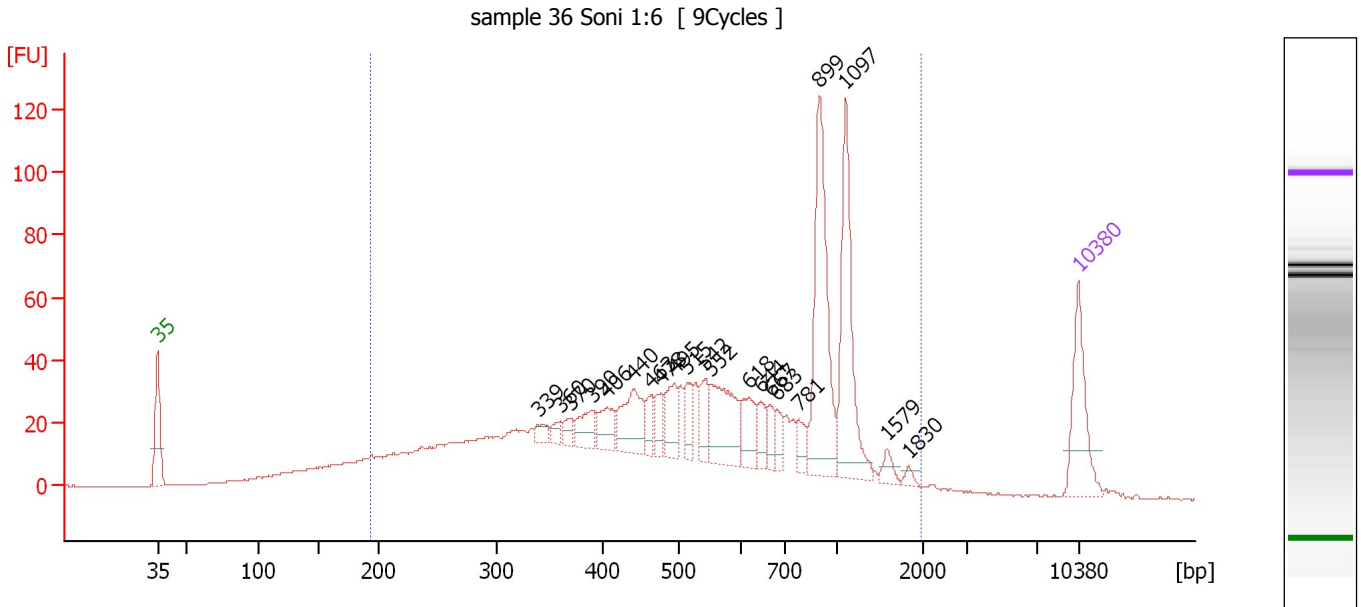
... Region table for sample 10 : sample 35 Soni 1:6

From [bp]	To [bp]	Average Size [bp]	Molarity [pmol/l]	Conc. [pg/μl]	Corr. Area	% of Total	Size distribution in CV [%]	Color
200	1,894	593	7,207.0	2,004.93	1,376.5	87	52.9	■

Assay Class: High Sensitivity DNA Assay
 Data Path: C:\...ents and Settings\Bioanalyzer\2013-04-09\2013-04-09_005.xad

Created: 4/9/2013 5:07:48 PM
 Modified: 4/9/2013 6:14:16 PM

Electropherogram Summary Continued ...



Overall Results for sample 11 : sample 36 Soni 1:6

Number of peaks found: 21 Corr. Area 1: 1,341.7
 Noise: 0.2

Peak table for sample 11 : sample 36 Soni 1:6

Peak	Size [bp]	Conc. [pg/μl]	Molarity [pmol/l]	Observations
1	35	125.00	5,411.3	Lower Marker
2	339	14.69	65.7	
3	360	11.59	48.8	
4	370	15.43	63.3	
5	390	36.61	142.2	
6	406	35.71	133.4	
7	440	75.63	260.1	
8	463	23.71	77.6	
9	478	28.56	90.6	
10	495	44.11	135.0	
11	515	29.27	86.1	
12	542	33.69	94.1	
13	552	98.64	270.9	
14	618	42.39	104.0	
15	644	23.72	55.8	
16	667	23.12	52.6	
17	683	18.61	41.3	
18	781	21.17	41.1	
19	899	198.73	335.0	
20	1,097	154.77	213.8	
21	1,579	12.18	11.7	
22	1,830	5.52	4.6	
23	10,380	75.00	10.9	Upper Marker

Assay Class: High Sensitivity DNA Assay
Data Path: C:\...ents and Settings\Bioanalyzer\2013-04-09\2013-04-09_005.xad

Created: 4/9/2013 5:07:48 PM
Modified: 4/9/2013 6:14:16 PM

Electropherogram Summary Continued ...

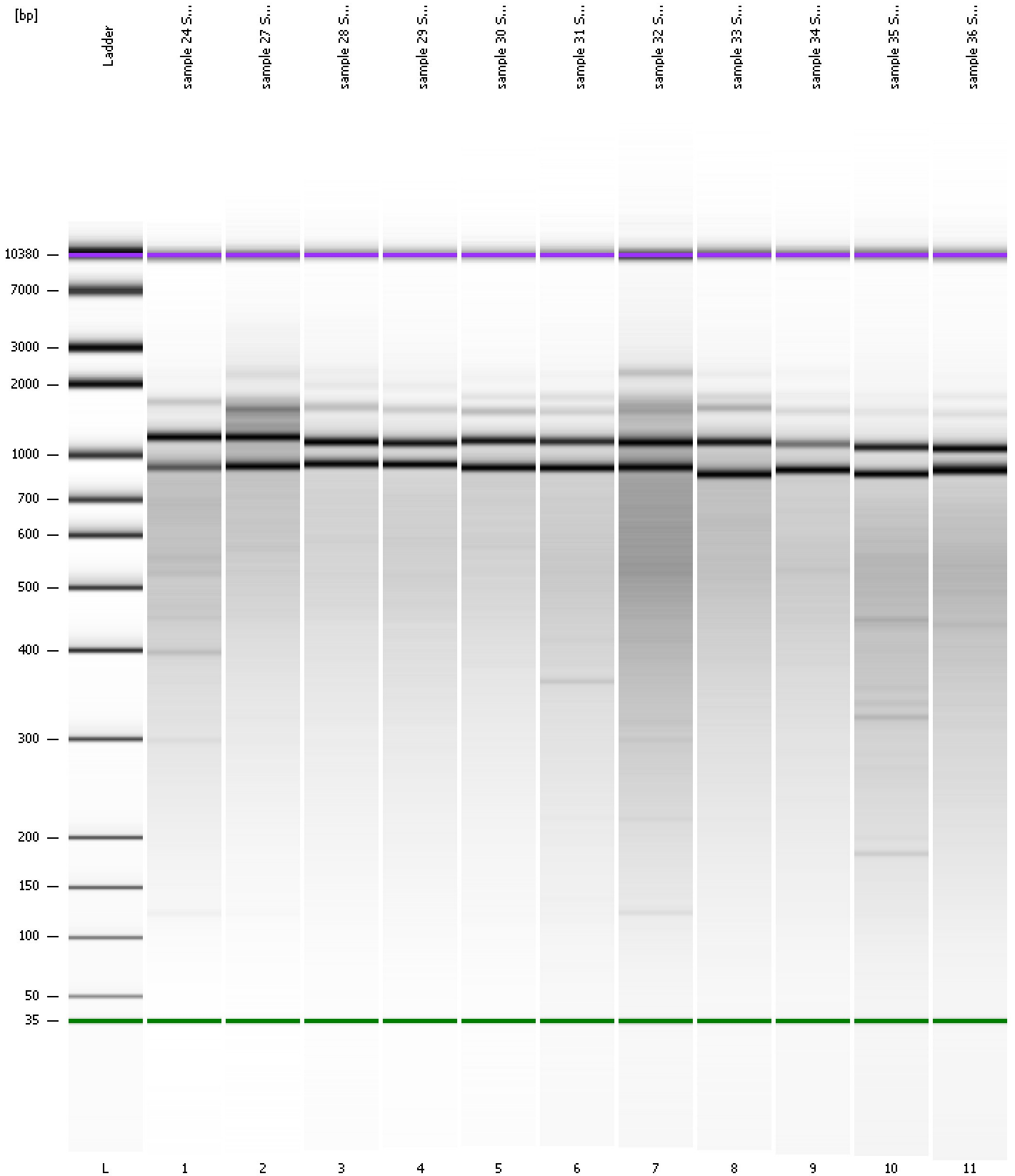
... Region table for sample 11 : sample 36 Soni 1:6

From [bp]	To [bp]	Average Size [bp]	Molarity [pmol/l]	Conc. [pg/μl]	Corr. Area	% of Total	Size distribution in CV [%]	Color
194	1,980	628	7,304.1	2,111.42	1,341.7	90	52.2	■

Assay Class: High Sensitivity DNA Assay
Data Path: C:\...ents and Settings\Bioanalyzer\2013-04-09\2013-04-09_005.xad

Created: 4/9/2013 5:07:48 PM
Modified: 4/9/2013 6:14:16 PM

Gel Image



Assay Class: High Sensitivity DNA Assay Created: 4/9/2013 5:07:48 PM
 Data Path: C:\...ents and Settings\Bioanalyzer\2013-04-09\2013-04-09_005.xad Modified: 4/9/2013 6:14:16 PM

Run Logbook

Description	Number	Source	Category	Sub Category	Time	Time Zone	User	Host
Run ended on port 1 (Number of wells acquired: 12)		Instrument	Run		4/9/2013 5:49:07 PM	(GMT --07:00) Pacific Standard Time	UC Davis	D8XSMGH1
Run started on port 1 (File: C:\Documents and Settings\Bioanalyzer\2013-04-09\2013-04-09_005.xad)		Instrument	Run		4/9/2013 5:07:53 PM	(GMT --07:00) Pacific Standard Time	UC Davis	D8XSMGH1
Product Number : G2938B		Instrument	Run		4/9/2013 5:07:53 PM	(GMT --07:00) Pacific Standard Time	UC Davis	D8XSMGH1
Name :		Instrument	Run		4/9/2013 5:07:53 PM	(GMT --07:00) Pacific Standard Time	UC Davis	D8XSMGH1
Vendor : Agilent Technologies		Instrument	Run		4/9/2013 5:07:53 PM	(GMT --07:00) Pacific Standard Time	UC Davis	D8XSMGH1
Serial# : DE13701086		Instrument	Run		4/9/2013 5:07:53 PM	(GMT --07:00) Pacific Standard Time	UC Davis	D8XSMGH1
Firmware : C.01.069		Instrument	Run		4/9/2013 5:07:53 PM	(GMT --07:00) Pacific Standard Time	UC Davis	D8XSMGH1
Cartridge : Electrode		Instrument	Run		4/9/2013 5:07:53 PM	(GMT --07:00) Pacific Standard Time	UC Davis	D8XSMGH1