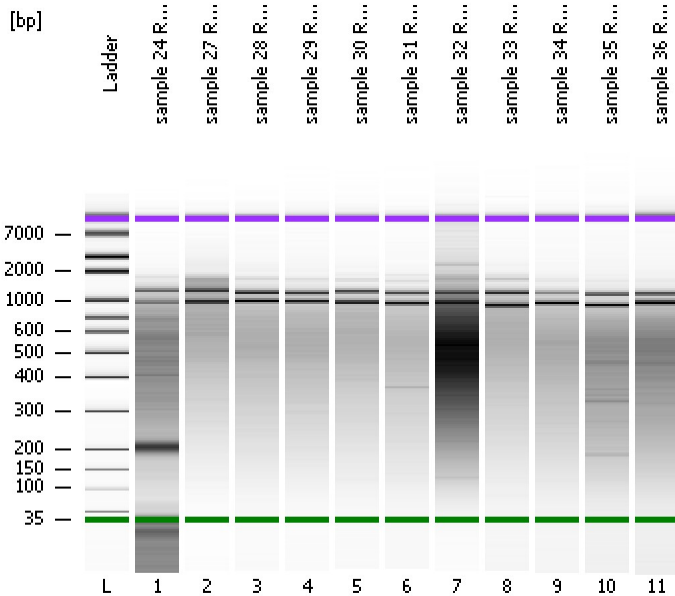


Assay Class: High Sensitivity DNA Assay
Data Path: C:\...ents and Settings\Bioanalyzer\2013-04-10\2013-04-10_002.xad

Created: 4/10/2013 12:01:20 PM
Modified: 4/10/2013 12:55:02 PM

Electrophoresis File Run Summary



Instrument Information:

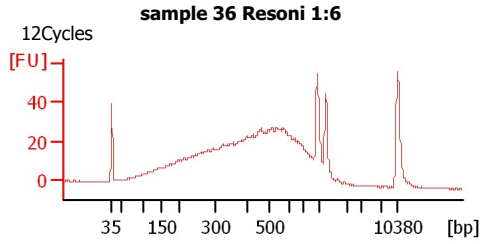
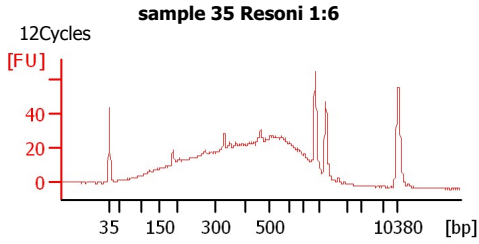
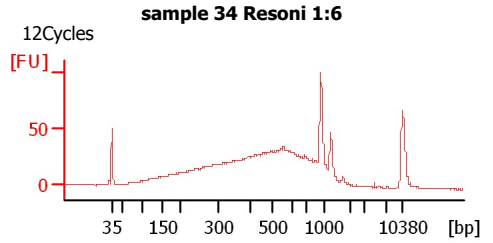
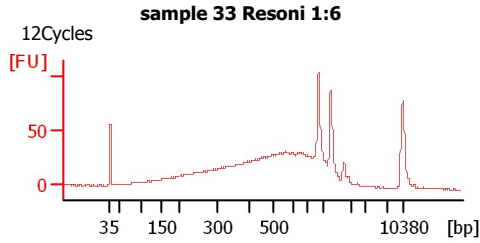
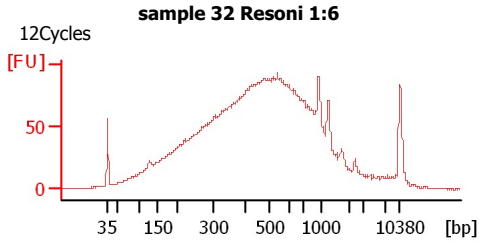
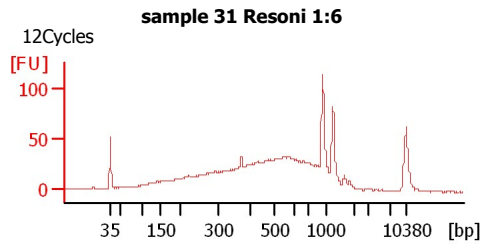
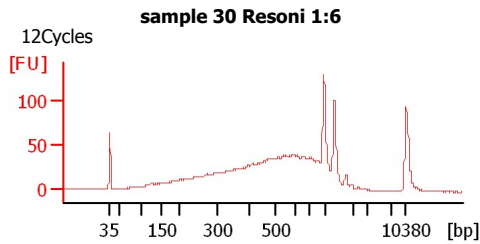
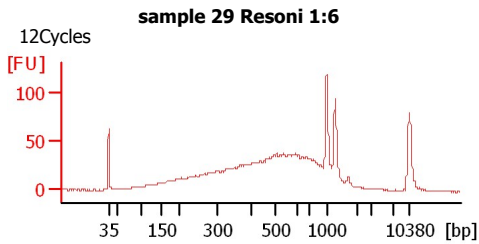
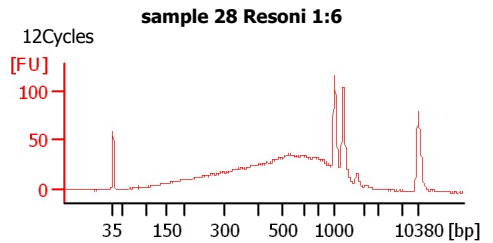
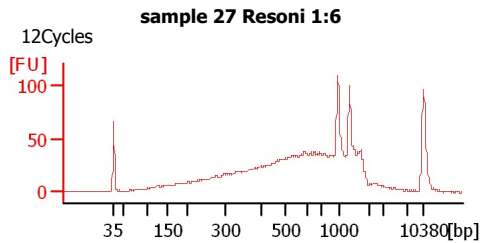
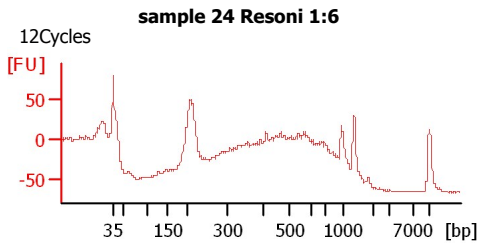
Instrument Name: DE13701086 Firmware: C.01.069
Serial#: DE13701086 Type: G2938B

Assay Information:

Assay Origin Path: C:\Program Files\Agilent\2100 bioanalyzer\2100 expert\assays\dsDNA\High Sensitivity DNA.xsy
Assay Class: High Sensitivity DNA Assay
Version: 1.03
Assay Comments: Copyright © 2003-2010 Agilent Technologies

Chip Information:

Chip Lot #:
Reagent Kit Lot #:
Chip Comments:



Assay Class: High Sensitivity DNA Assay
Data Path: C:\...ents and Settings\Bioanalyzer\2013-04-10\2013-04-10_002.xad

Created: 4/10/2013 12:01:20 PM
Modified: 4/10/2013 12:55:02 PM

Electrophoresis File Run Summary (Chip Summary)

Sample Name	Sample Comment	Rest. Digest	Status	Observation	Result Label	Result Color
sample 24 Resoni 1:6	12Cycles	<input type="checkbox"/>	✓			
sample 27 Resoni 1:6	12Cycles	<input type="checkbox"/>	✓			
sample 28 Resoni 1:6	12Cycles	<input type="checkbox"/>	✓			
sample 29 Resoni 1:6	12Cycles	<input type="checkbox"/>	✓			
sample 30 Resoni 1:6	12Cycles	<input type="checkbox"/>	✓			
sample 31 Resoni 1:6	12Cycles	<input type="checkbox"/>	✓			
sample 32 Resoni 1:6	12Cycles	<input type="checkbox"/>	✓			
sample 33 Resoni 1:6	12Cycles	<input type="checkbox"/>	✓			
sample 34 Resoni 1:6	12Cycles	<input type="checkbox"/>	✓			
sample 35 Resoni 1:6	12Cycles	<input type="checkbox"/>	✓			
sample 36 Resoni 1:6	12Cycles	<input type="checkbox"/>	✓			
Ladder		<input type="checkbox"/>	✓			

Chip Lot #

Reagent Kit Lot #

Chip Comments :

Assay Class: High Sensitivity DNA Assay
 Data Path: C:\...ents and Settings\Bioanalyzer\2013-04-10\2013-04-10_002.xad

Created: 4/10/2013 12:01:20 PM
 Modified: 4/10/2013 12:55:02 PM

Electrophoresis Assay Details

General Analysis Settings

Number of Available Sample and Ladder Wells (Max.) : 12
 Minimum Visible Range [s] : 32
 Maximum Visible Range [s] : 138
 Start Analysis Time Range [s] : 33
 End Analysis Time Range [s] : 137.5
 Ladder Concentration [pg/μl] : 1950
 Uses Standard Area for Ladder Fragments
 Lower Marker Concentration [pg/μl] : 125
 Upper Marker Concentration [pg/μl] : 75
 Used Upper Marker for Quantitation
 Standard Curve Fit is Point to Point
 Show Data Aligned to Lower and Upper Marker

Integrator Settings

Integration Start Time [s] : 33.05
 Integration End Time [s] : 137
 Slope Threshold : 0.8
 Height Threshold [FU] : 5
 Area Threshold : 0.1
 Width Threshold [s] : 0.6
 Baseline Plateau [s] : 0.5

Filter Settings

Filter Width [s] : 0.5
 Polynomial Order : 4

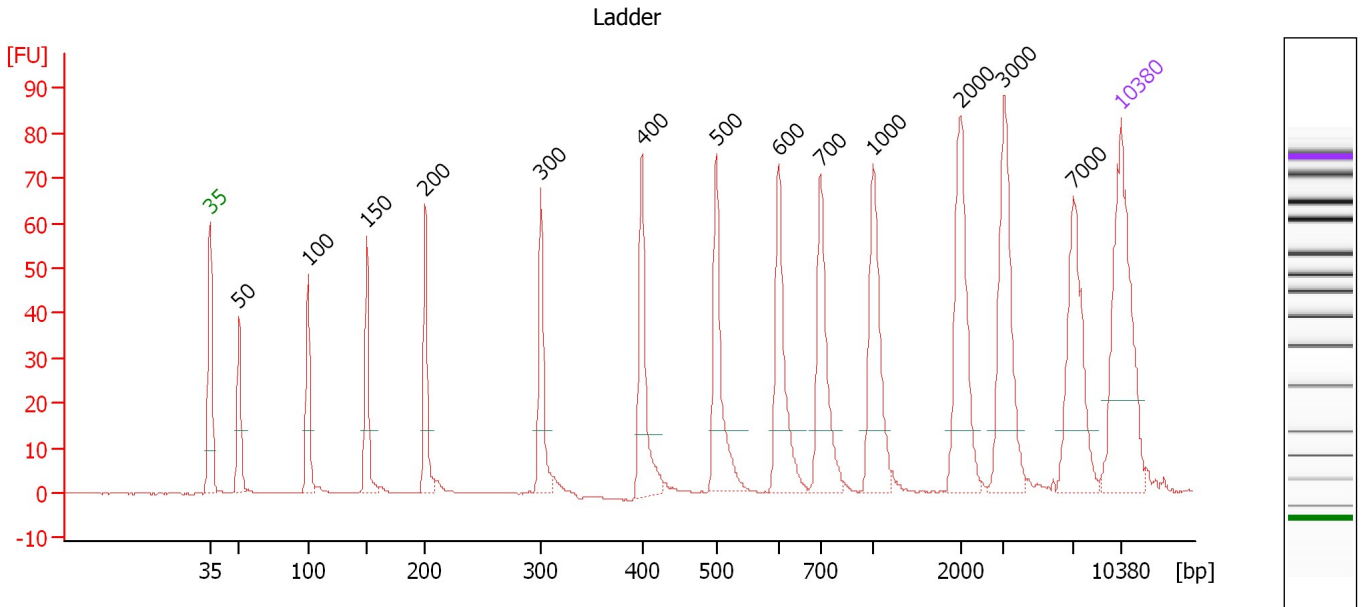
Ladder

Ladder Peak	Size	Area
1	35	160
2	50	210
3	100	208
4	150	221
5	200	242
6	300	270
7	400	305
8	500	306
9	600	336
10	700	321
11	1000	366
12	2000	413
13	3000	411
14	7000	400
15	10380	214

Assay Class: High Sensitivity DNA Assay
 Data Path: C:\...ents and Settings\Bioanalyzer\2013-04-10\2013-04-10_002.xad

Created: 4/10/2013 12:01:20 PM
 Modified: 4/10/2013 12:55:02 PM

Electropherogram Summary



Overall Results for Ladder

Noise: 0.2

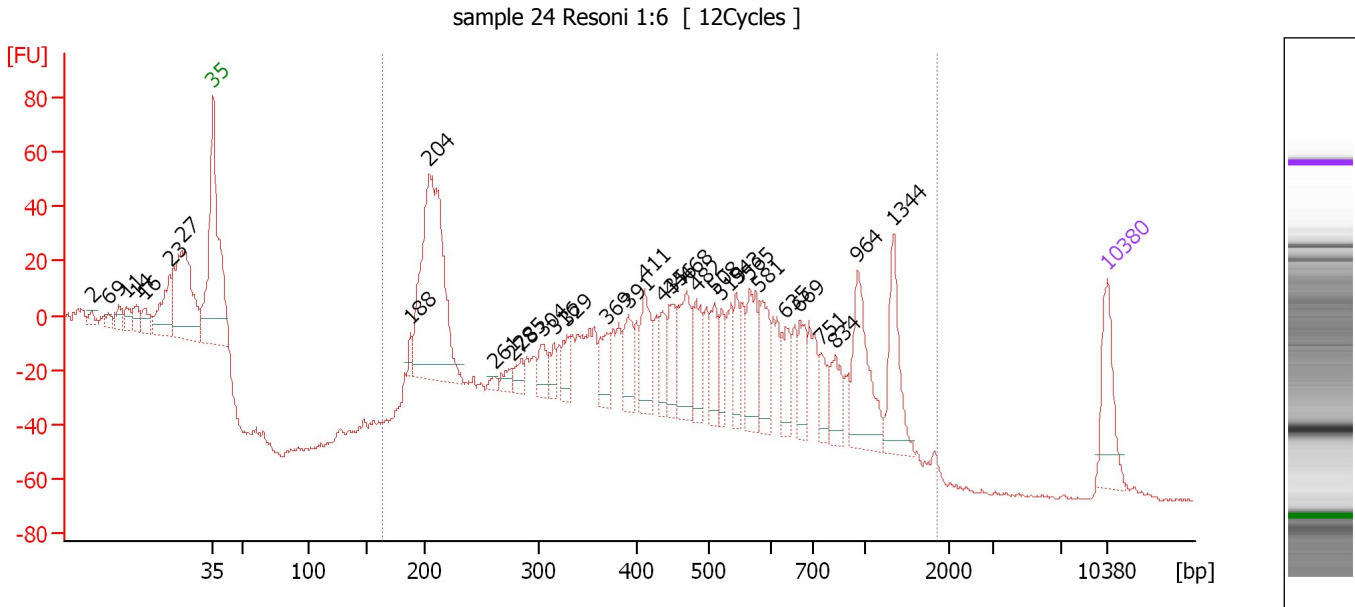
Peak table for Ladder

Peak	Size [bp]	Conc. [pg/μl]	Molarity [pmol/l]	Observations
1	35	125.00	5,411.3	Lower Marker
2	50	150.00	4,545.5	Ladder Peak
3	100	150.00	2,272.7	Ladder Peak
4	150	150.00	1,515.2	Ladder Peak
5	200	150.00	1,136.4	Ladder Peak
6	300	150.00	757.6	Ladder Peak
7	400	150.00	568.2	Ladder Peak
8	500	150.00	454.5	Ladder Peak
9	600	150.00	378.8	Ladder Peak
10	700	150.00	324.7	Ladder Peak
11	1,000	150.00	227.3	Ladder Peak
12	2,000	150.00	113.6	Ladder Peak
13	3,000	150.00	75.8	Ladder Peak
14	7,000	150.00	32.5	Ladder Peak
15	10,380	75.00	10.9	Upper Marker

Assay Class: High Sensitivity DNA Assay
 Data Path: C:\...ents and Settings\Bioanalyzer\2013-04-10\2013-04-10_002.xad

Created: 4/10/2013 12:01:20 PM
 Modified: 4/10/2013 12:55:02 PM

Electropherogram Summary Continued ...



Overall Results for sample 1 : sample 24 Resoni 1:6

Number of peaks found: 34 Corr. Area 1: 1,537.8
 Noise: 0.7

Peak table for sample 1 : sample 24 Resoni 1:6


Peak	Size [bp]	Conc. [pg/μl]	Molarity [pmol/l]	Observations
1	2	0.00	0.0	
2	6	0.00	0.0	
3	9	0.00	0.0	
4	11	0.00	0.0	
5	14	0.00	0.0	
6	16	0.00	0.0	
7	23	0.00	0.0	
8	27	0.00	0.0	
9	35	125.00	5,411.3	Lower Marker
10	188	16.00	129.1	
11	204	499.31	3,708.0	
12	261	8.90	51.6	
13	278	21.04	114.8	
14	285	23.80	126.6	
15	304	41.61	207.3	
16	316	24.15	115.8	
17	329	36.64	168.5	
18	369	48.64	199.5	
19	391	57.87	224.3	
20	411	82.56	304.3	
21	435	39.51	137.5	
22	446	57.99	196.9	
23	468	92.51	299.3	
24	482	62.29	196.0	
25	508	53.88	160.8	
26	519	39.87	116.4	

Assay Class: High Sensitivity DNA Assay
 Data Path: C:\...ents and Settings\Bioanalyzer\2013-04-10\2013-04-10_002.xad


Created: 4/10/2013 12:01:20 PM
 Modified: 4/10/2013 12:55:02 PM

Electropherogram Summary Continued ...

... Peak table for sample 1 : sample 24 Resoni 1:6

Peak	Size [bp]	Conc. [pg/µl]	Molarity [pmol/l]	Observations
27	543	49.80	139.0	
28	565	83.77	224.8	
29	581	68.42	178.4	
30	635	50.34	120.1	
31	669	46.16	104.5	
32	751	35.56	71.8	
33	834	47.84	86.9	
34	964	124.52	195.7	
35	1,344	94.38	106.4	
36	 10,380	75.00	10.9	Upper Marker

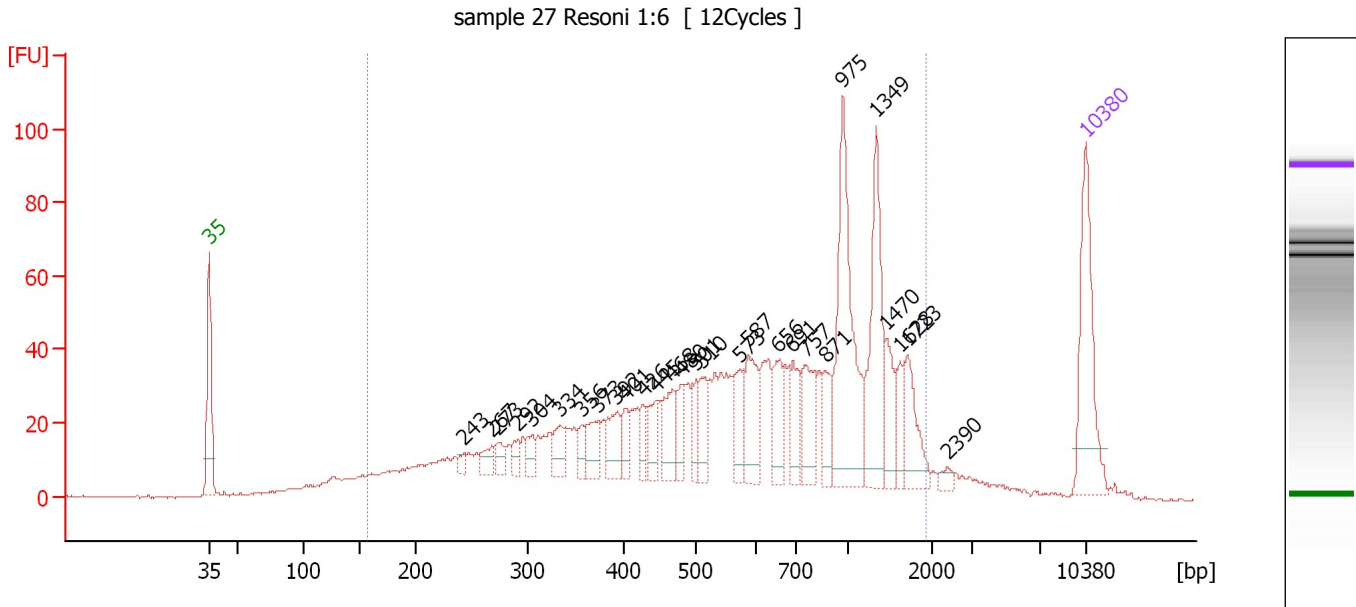
Region table for sample 1 : sample 24 Resoni 1:6

From [bp]	To [bp]	Average Size [bp]	Molarity [pmol/l]	Conc. [pg/µl]	Corr. Area	% of Total	Size distribution in CV [%]	Color
164	1,853	568	8,748.9	2,222.72	1,537.8	88	52.9	

Assay Class: High Sensitivity DNA Assay
 Data Path: C:\...ents and Settings\Bioanalyzer\2013-04-10\2013-04-10_002.xad

Created: 4/10/2013 12:01:20 PM
 Modified: 4/10/2013 12:55:02 PM

Electropherogram Summary Continued ...



Overall Results for sample 2 : sample 27 Resoni 1:6

Number of peaks found: 28 Corr. Area 1: 1,510.9
 Noise: 0.3

Peak table for sample 2 : sample 27 Resoni 1:6

Peak	Size [bp]	Conc. [pg/μl]	Molarity [pmol/l]	Observations
1	35	125.00	5,411.3	Lower Marker
2	243	8.21	51.2	
3	267	16.84	95.4	
4	273	13.17	73.1	
5	292	11.48	59.6	
6	304	15.52	77.2	
7	334	26.91	122.2	
8	356	13.04	55.6	
9	373	28.89	117.5	
10	392	33.56	129.8	
11	401	16.86	63.7	
12	426	16.50	58.7	
13	445	24.51	83.4	
14	468	38.63	125.2	
15	480	23.25	73.5	
16	501	20.86	63.1	
17	510	27.99	83.1	
18	573	33.84	89.5	
19	587	47.49	122.6	
20	656	33.71	77.8	
21	691	32.85	72.0	
22	757	45.50	91.0	
23	871	25.71	44.7	
24	975	141.69	220.2	
25	1,349	91.75	103.0	
26	1,470	29.99	30.9	

Assay Class: High Sensitivity DNA Assay
 Data Path: C:\...ents and Settings\Bioanalyzer\2013-04-10\2013-04-10_002.xad

Created: 4/10/2013 12:01:20 PM
 Modified: 4/10/2013 12:55:02 PM

Electropherogram Summary Continued ...

... Peak table for sample 2 : sample 27 Resoni 1:6

Peak	Size [bp]	Conc. [pg/μl]	Molarity [pmol/l]	Observations
27	1,628	16.55	15.4	
28	1,723	38.42	33.8	
29	2,390	5.37	3.4	
30	10,380	75.00	10.9	Upper Marker

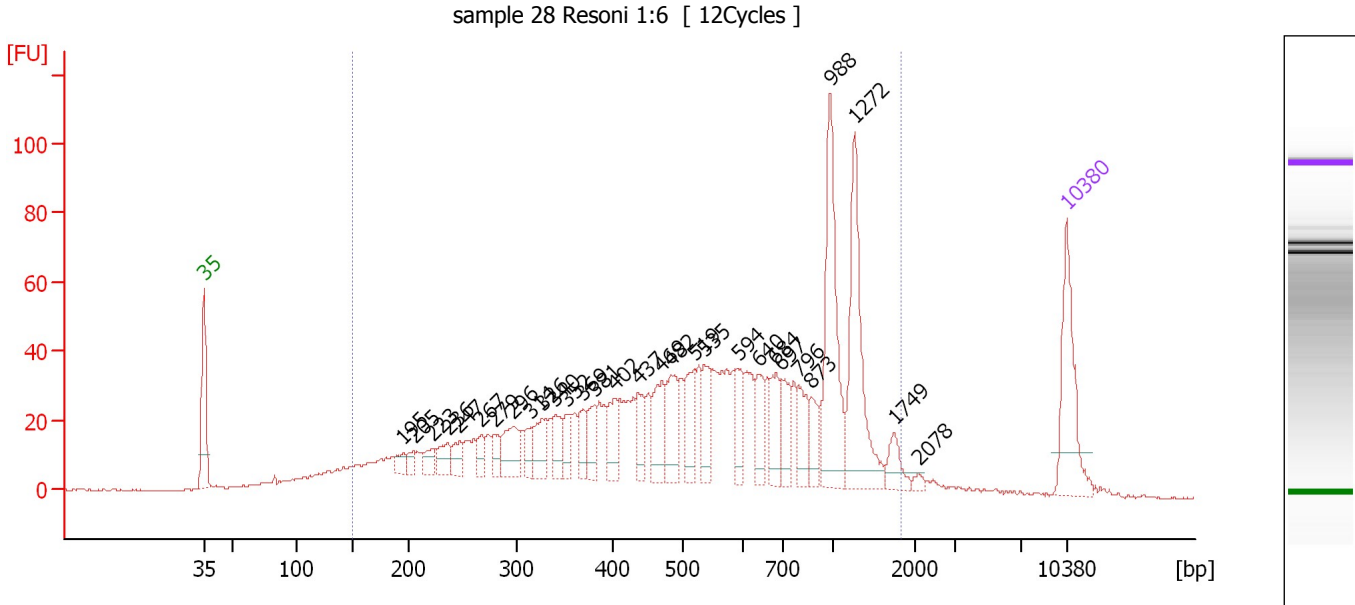
Region table for sample 2 : sample 27 Resoni 1:6

From [bp]	To [bp]	Average Size [bp]	Molarity [pmol/l]	Conc. [pg/μl]	Corr. Area	% of Total	Size distribution in CV [%]	Color
157	1,932	730	5,423.6	1,598.02	1,510.9	92	58.5	

Assay Class: High Sensitivity DNA Assay
 Data Path: C:\...ents and Settings\Bioanalyzer\2013-04-10\2013-04-10_002.xad

Created: 4/10/2013 12:01:20 PM
 Modified: 4/10/2013 12:55:02 PM

Electropherogram Summary Continued ...



Overall Results for sample 3 : sample 28 Resoni 1:6

Number of peaks found: 30 Corr. Area 1: 1,493.7
 Noise: 0.3

Peak table for sample 3 : sample 28 Resoni 1:6

Peak	Size [bp]	Conc. [pg/μl]	Molarity [pmol/l]	Observations
1	35	125.00	5,411.3	Lower Marker
2	195	13.64	105.7	
3	205	12.60	93.1	
4	223	22.12	150.5	
5	236	27.51	176.4	
6	247	21.12	129.5	
7	267	18.43	104.6	
8	279	20.13	109.4	
9	296	49.65	254.0	
10	314	23.25	112.2	
11	326	36.31	168.9	
12	340	30.84	137.6	
13	352	24.31	104.6	
14	369	26.76	110.0	
15	381	31.01	123.5	
16	402	35.90	135.4	
17	437	32.51	112.8	
18	469	48.97	158.1	
19	482	59.79	187.9	
20	519	49.12	143.3	
21	535	41.65	117.9	
22	594	31.32	80.0	
23	640	35.33	83.6	
24	684	39.51	87.6	
25	697	36.04	78.3	
26	796	35.71	68.0	

Assay Class: High Sensitivity DNA Assay
 Data Path: C:\...ents and Settings\Bioanalyzer\2013-04-10\2013-04-10_002.xad


Created: 4/10/2013 12:01:20 PM
 Modified: 4/10/2013 12:55:02 PM

Electropherogram Summary Continued ...

... Peak table for sample 3 : sample 28 Resoni 1:6

Peak	Size [bp]	Conc. [pg/μl]	Molarity [pmol/l]	Observations
27	873	24.02	41.7	
28	988	142.65	218.8	
29	1,272	128.16	152.7	
30	1,749	20.23	17.5	
31	2,078	4.42	3.2	
32	10,380	75.00	10.9	Upper Marker

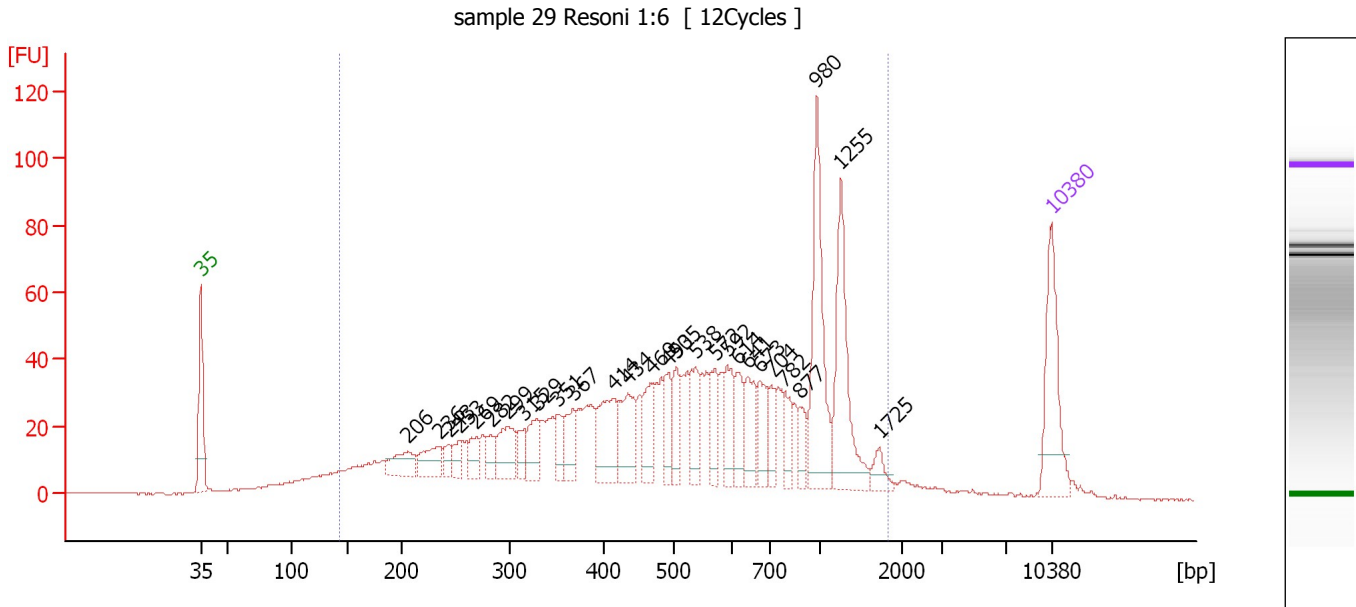
Region table for sample 3 : sample 28 Resoni 1:6

From [bp]	To [bp]	Average Size [bp]	Molarity [pmol/l]	Conc. [pg/μl]	Corr. Area	% of Total	Size distribution in CV [%]	Color
149	1,830	636	7,332.3	1,961.44	1,493.7	93	56.4	

Assay Class: High Sensitivity DNA Assay
 Data Path: C:\...ents and Settings\Bioanalyzer\2013-04-10\2013-04-10_002.xad

Created: 4/10/2013 12:01:20 PM
 Modified: 4/10/2013 12:55:02 PM

Electropherogram Summary Continued ...



Overall Results for sample 4 : sample 29 Resoni 1:6

Number of peaks found: 28 Corr. Area 1: 1,539.5
 Noise: 0.2

Peak table for sample 4 : sample 29 Resoni 1:6

Peak	Size [bp]	Conc. [pg/μl]	Molarity [pmol/l]	Observations
1	35	125.00	5,411.3	Lower Marker
2	206	40.83	300.5	
3	236	43.74	281.4	
4	243	15.69	97.7	
5	253	21.38	127.9	
6	269	24.58	138.4	
7	282	20.56	110.3	
8	299	55.26	280.3	
9	315	23.30	112.1	
10	329	40.35	185.7	
11	351	24.86	107.2	
12	367	40.18	165.8	
13	414	72.36	264.9	
14	434	62.16	217.1	
15	469	47.64	154.0	
16	493	36.63	112.7	
17	505	35.12	105.4	
18	538	43.29	122.0	
19	572	36.40	96.4	
20	592	42.20	108.0	
21	614	35.81	88.4	
22	641	43.93	103.8	
23	673	35.54	80.0	
24	704	23.59	50.7	
25	782	28.31	54.8	
26	877	20.56	35.5	

Assay Class: High Sensitivity DNA Assay
 Data Path: C:\...ents and Settings\Bioanalyzer\2013-04-10\2013-04-10_002.xad


Created: 4/10/2013 12:01:20 PM
 Modified: 4/10/2013 12:55:02 PM

Electropherogram Summary Continued ...

... Peak table for sample 4 : sample 29 Resoni 1:6

Peak	Size [bp]	Conc. [pg/μl]	Molarity [pmol/l]	Observations
27	980	132.66	205.0	
28	1,255	109.64	132.4	
29	1,725	14.56	12.8	
30	10,380	75.00	10.9	Upper Marker

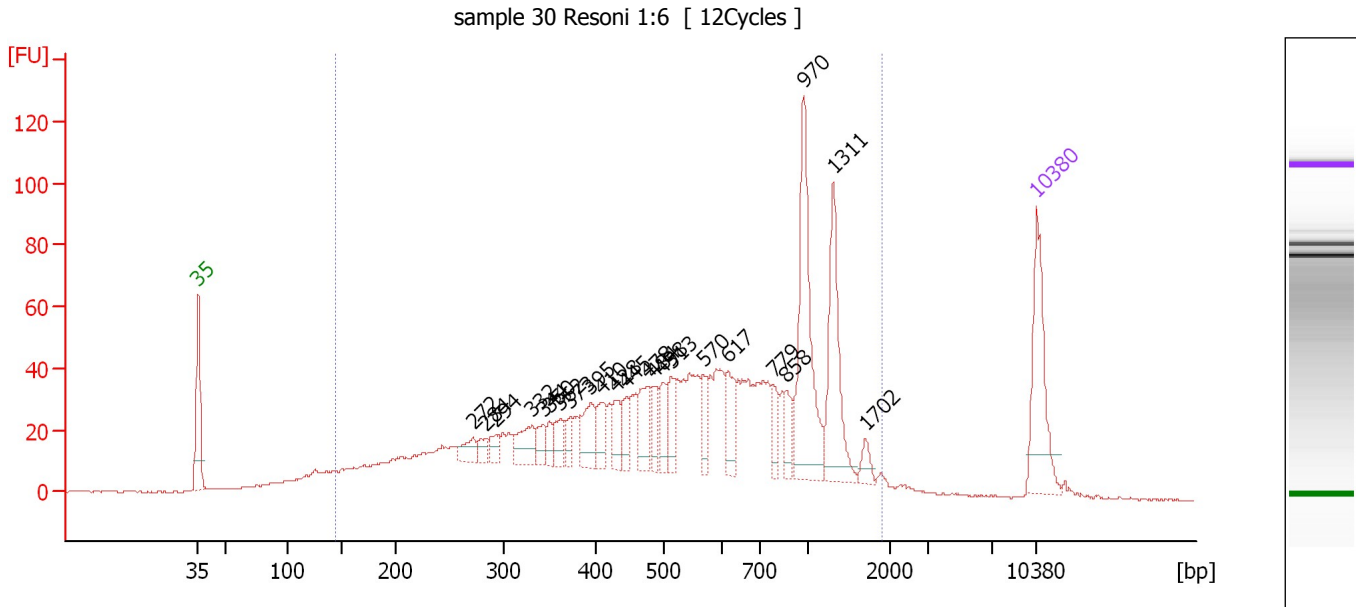
Region table for sample 4 : sample 29 Resoni 1:6

From [bp]	To [bp]	Average Size [bp]	Molarity [pmol/l]	Conc. [pg/μl]	Corr. Area	% of Total	Size distribution in CV [%]	Color
144	1,832	613	7,517.8	1,950.63	1,539.5	93	56.2	

Assay Class: High Sensitivity DNA Assay
 Data Path: C:\...ents and Settings\Bioanalyzer\2013-04-10\2013-04-10_002.xad

Created: 4/10/2013 12:01:20 PM
 Modified: 4/10/2013 12:55:02 PM

Electropherogram Summary Continued ...



Overall Results for sample 5 : sample 30 Resoni 1:6

Number of peaks found: 23 Corr. Area 1: 1,607.5
 Noise: 0.2

Peak table for sample 5 : sample 30 Resoni 1:6

Peak	Size [bp]	Conc. [pg/μl]	Molarity [pmol/l]	Observations
1	35	125.00	5,411.3	Lower Marker
2	272	21.09	117.6	
3	284	13.61	72.6	
4	294	15.55	80.2	
5	332	36.77	167.9	
6	344	18.32	80.7	
7	350	14.16	61.3	
8	362	23.75	99.5	
9	373	15.23	61.9	
10	395	40.65	156.1	
11	410	29.44	108.9	
12	428	25.84	91.4	
13	445	23.54	80.2	
14	478	40.57	128.7	
15	484	25.44	79.7	
16	498	29.66	90.2	
17	513	26.90	79.4	
18	570	26.15	69.6	
19	617	36.29	89.2	
20	779	20.40	39.7	
21	858	19.82	35.0	
22	970	145.64	227.4	
23	1,311	94.35	109.0	
24	1,702	10.77	9.6	
25	10,380	75.00	10.9	Upper Marker

Assay Class: High Sensitivity DNA Assay
Data Path: C:\...ents and Settings\Bioanalyzer\2013-04-10\2013-04-10_002.xad

Created: 4/10/2013 12:01:20 PM
Modified: 4/10/2013 12:55:02 PM

Electropherogram Summary Continued ...

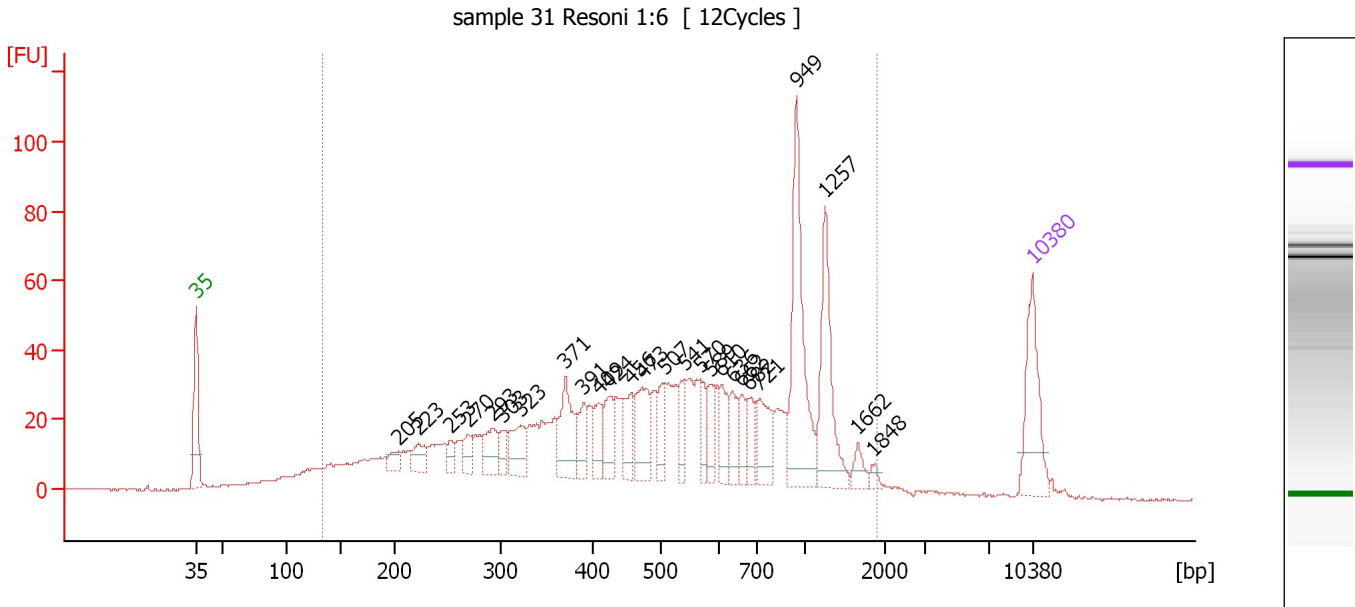
... Region table for sample 5 : sample 30 Resoni 1:6

From [bp]	To [bp]	Average Size [bp]	Molarity [pmol/l]	Conc. [pg/ μ l]	Corr. Area	% of Total	Size distribution in CV [%]	Color
144	1,904	635	6,910.0	1,848.95	1,607.5	93	56.1	

Assay Class: High Sensitivity DNA Assay
 Data Path: C:\...ents and Settings\Bioanalyzer\2013-04-10\2013-04-10_002.xad

Created: 4/10/2013 12:01:20 PM
 Modified: 4/10/2013 12:55:02 PM

Electropherogram Summary Continued ...



Overall Results for sample 6 : sample 31 Resoni 1:6

Number of peaks found: 26 Corr. Area 1: 1,402.8
 Noise: 0.2

Peak table for sample 6 : sample 31 Resoni 1:6

Peak	Size [bp]	Conc. [pg/μl]	Molarity [pmol/l]	Observations
1	35	125.00	5,411.3	Lower Marker
2	205	17.82	131.9	
3	223	30.95	210.0	
4	253	17.18	103.0	
5	270	23.54	132.1	
6	293	42.48	220.0	
7	303	19.73	98.7	
8	323	50.82	238.7	
9	371	77.53	316.6	
10	391	40.76	158.1	
11	409	36.00	133.3	
12	424	45.07	161.0	
13	456	41.46	137.7	
14	473	67.10	215.0	
15	507	35.88	107.3	
16	541	31.01	86.9	
17	570	29.32	78.0	
18	589	32.31	83.1	
19	610	36.33	90.3	
20	636	32.84	78.2	
21	662	26.40	60.5	
22	682	29.78	66.1	
23	721	55.49	116.5	
24	949	168.02	268.2	
25	1,257	110.79	133.6	
26	1,662	15.11	13.8	

Assay Class: High Sensitivity DNA Assay
 Data Path: C:\...ents and Settings\Bioanalyzer\2013-04-10\2013-04-10_002.xad


Created: 4/10/2013 12:01:20 PM
 Modified: 4/10/2013 12:55:02 PM

Electropherogram Summary Continued ...

... Peak table for sample 6 : sample 31 Resoni 1:6

Peak	Size [bp]	Conc. [pg/μl]	Molarity [pmol/l]	Observations
27	1,848	6.93	5.7	
28	10,380	75.00	10.9	Upper Marker

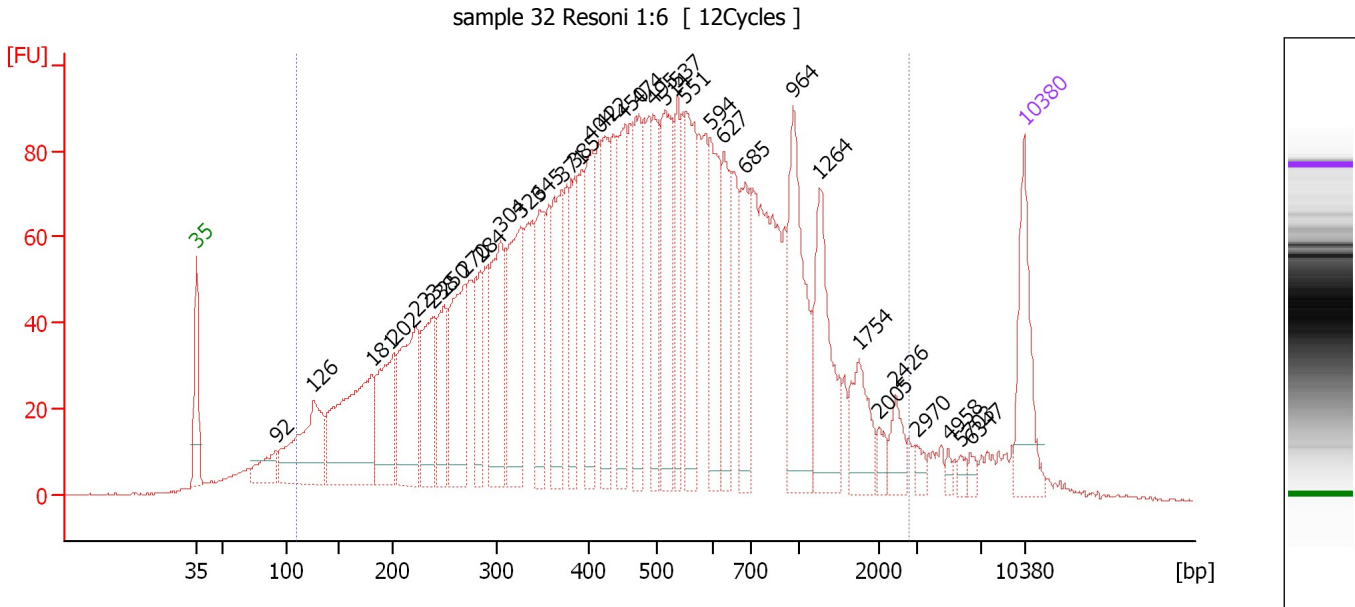
Region table for sample 6 : sample 31 Resoni 1:6

From [bp]	To [bp]	Average Size [bp]	Molarity [pmol/l]	Conc. [pg/μl]	Corr. Area	% of Total	Size distribution in CV [%]	Color
134	1,892	607	8,809.6	2,200.44	1,402.8	93	57.9	

Assay Class: High Sensitivity DNA Assay
 Data Path: C:\...ents and Settings\Bioanalyzer\2013-04-10\2013-04-10_002.xad

Created: 4/10/2013 12:01:20 PM
 Modified: 4/10/2013 12:55:02 PM

Electropherogram Summary Continued ...



Overall Results for sample 7 : sample 32 Resoni 1:6

Number of peaks found: 34 Corr. Area 1: 3,792.4
 Noise: 0.3

Peak table for sample 7 : sample 32 Resoni 1:6

Peak	Size [bp]	Conc. [pg/μl]	Molarity [pmol/l]	Observations
1	35	125.00	5,411.3	Lower Marker
2	92	44.15	724.9	
3	126	174.82	2,102.6	
4	181	248.38	2,078.8	
5	202	129.91	974.0	
6	223	171.45	1,165.4	
7	238	117.64	748.5	
8	250	83.89	508.9	
9	270	159.67	897.4	
10	284	77.80	414.7	
11	304	149.05	744.0	
12	326	156.45	727.9	
13	345	103.99	456.1	
14	371	125.70	513.2	
15	385	94.96	373.6	
16	404	116.40	436.2	
17	422	103.14	370.6	
18	450	121.03	407.3	
19	474	104.69	334.7	
20	495	90.93	278.1	
21	514	136.80	403.1	
22	537	81.73	230.4	
23	551	127.45	350.1	
24	594	115.12	293.4	
25	627	87.10	210.5	
26	685	98.04	216.9	

Assay Class: High Sensitivity DNA Assay
 Data Path: C:\...ents and Settings\Bioanalyzer\2013-04-10\2013-04-10_002.xad

Created: 4/10/2013 12:01:20 PM
 Modified: 4/10/2013 12:55:02 PM

Electropherogram Summary Continued ...

... Peak table for sample 7 : sample 32 Resoni 1:6

Peak	Size [bp]	Conc. [pg/μl]	Molarity [pmol/l]	Observations
27	964	157.50	247.5	
28	1,264	118.08	141.6	
29	1,754	54.75	47.3	
30	2,005	12.53	9.5	
31	2,426	24.95	15.6	
32	2,970	7.99	4.1	
33	4,958	5.21	1.6	
34	5,703	7.01	1.9	
35	6,347	6.66	1.6	
36	▶ 10,380	75.00	10.9	Upper Marker

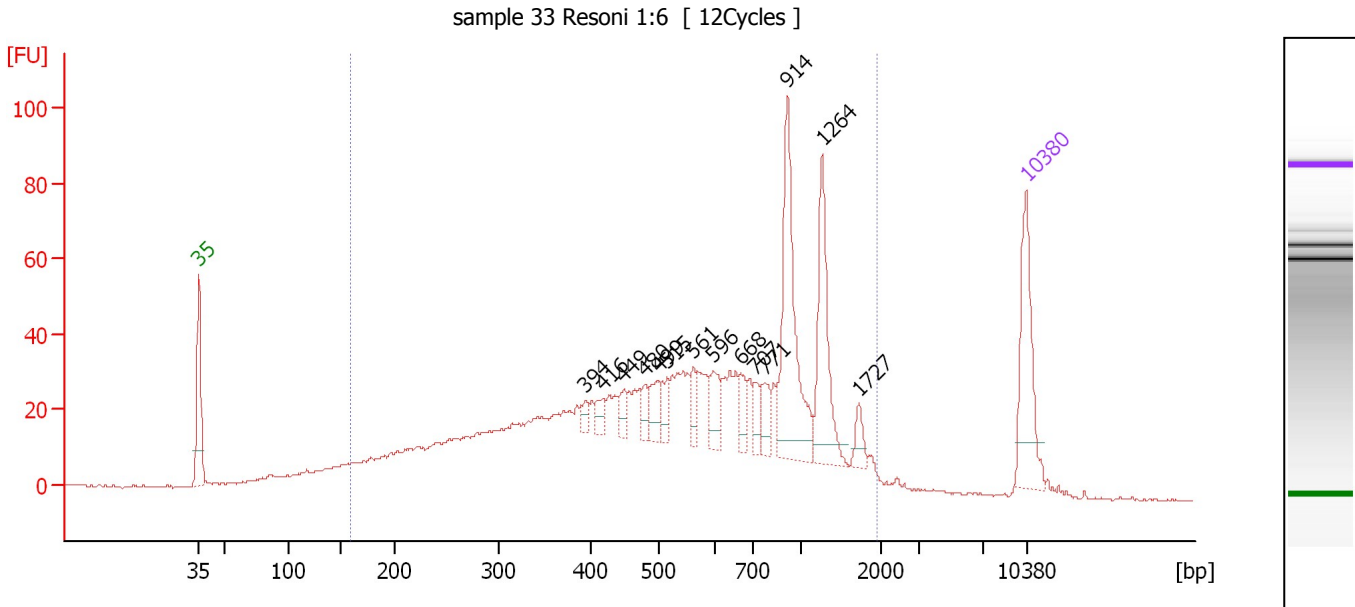
Region table for sample 7 : sample 32 Resoni 1:6

From [bp]	To [bp]	Average Size [bp]	Molarity [pmol/l]	Conc. [pg/μl]	Corr. Area	% of Total	Size distribution in CV [%]	Color
111	2,804	572	21,342.2	4,832.65	3,792.4	94	71.4	

Assay Class: High Sensitivity DNA Assay
 Data Path: C:\...ents and Settings\Bioanalyzer\2013-04-10\2013-04-10_002.xad

Created: 4/10/2013 12:01:20 PM
 Modified: 4/10/2013 12:55:02 PM

Electropherogram Summary Continued ...



Overall Results for sample 8 : sample 33 Resoni 1:6

Number of peaks found: 14 Corr. Area 1: 1,332.2
 Noise: 0.4

Peak table for sample 8 : sample 33 Resoni 1:6

Peak	Size [bp]	Conc. [pg/μl]	Molarity [pmol/l]	Observations
1	35	125.00	5,411.3	Lower Marker
2	394	10.90	41.9	
3	416	13.23	48.2	
4	449	16.78	56.7	
5	480	14.29	45.2	
6	499	24.43	74.1	
7	515	20.68	60.8	
8	561	17.98	48.6	
9	596	29.57	75.1	
10	668	19.90	45.2	
11	707	15.99	34.3	
12	771	22.41	44.1	
13	914	146.87	243.4	
14	1,264	89.46	107.3	
15	1,727	13.65	12.0	
16	10,380	75.00	10.9	Upper Marker

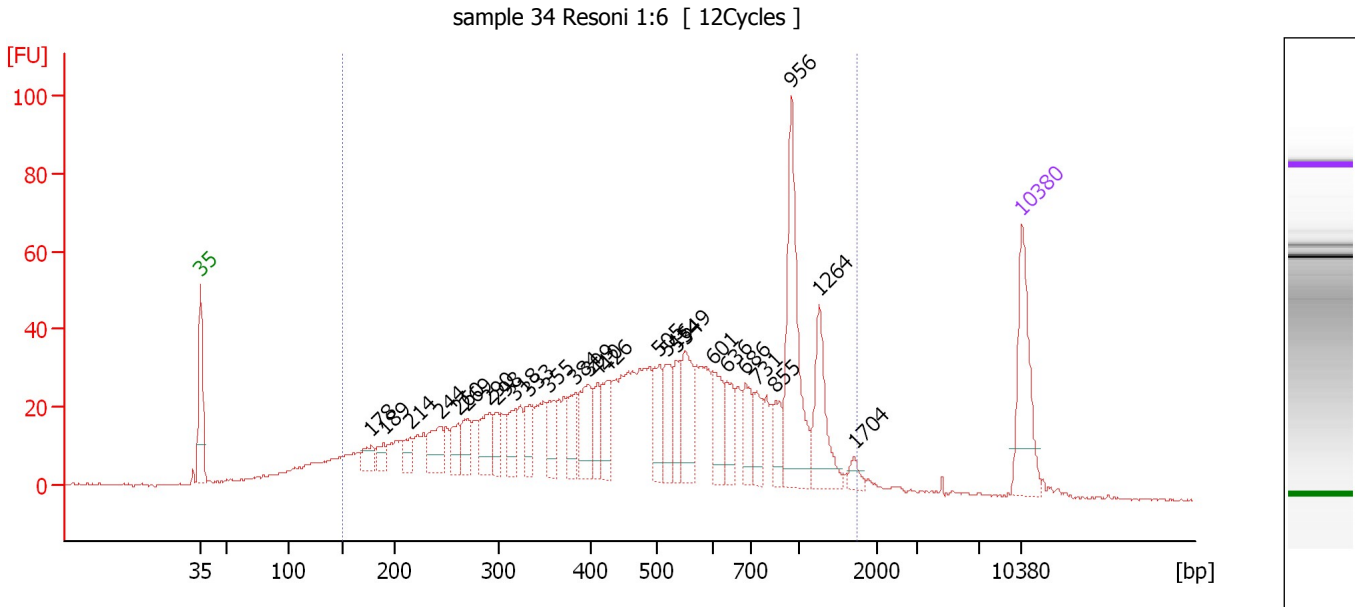
Region table for sample 8 : sample 33 Resoni 1:6

From [bp]	To [bp]	Average Size [bp]	Molarity [pmol/l]	Conc. [pg/μl]	Corr. Area	% of Total	Size distribution in CV [%]	Color
158	1,946	653	6,374.0	1,760.13	1,332.2	93	57.5	Blue

Assay Class: High Sensitivity DNA Assay
 Data Path: C:\...ents and Settings\Bioanalyzer\2013-04-10\2013-04-10_002.xad

Created: 4/10/2013 12:01:20 PM
 Modified: 4/10/2013 12:55:02 PM

Electropherogram Summary Continued ...



Overall Results for sample 9 : sample 34 Resoni 1:6

Number of peaks found: 27 Corr. Area 1: 1,341.4
 Noise: 0.3

Peak table for sample 9 : sample 34 Resoni 1:6

Peak	Size [bp]	Conc. [pg/μl]	Molarity [pmol/l]	Observations
1	35	125.00	5,411.3	Lower Marker
2	178	24.28	207.0	
3	189	20.47	163.7	
4	214	20.49	144.9	
5	244	48.78	303.0	
6	260	31.23	181.8	
7	269	32.39	182.5	
8	290	47.97	250.2	
9	298	25.98	132.3	
10	318	34.70	165.4	
11	333	30.66	139.7	
12	355	33.59	143.4	
13	384	36.57	144.4	
14	399	61.63	234.1	
15	410	28.33	104.6	
16	426	42.53	151.1	
17	505	44.32	133.1	
18	516	44.34	130.2	
19	534	34.70	98.5	
20	549	65.00	179.5	
21	601	42.00	105.9	
22	636	35.55	84.6	
23	686	38.06	84.1	
24	731	31.71	65.7	
25	855	27.02	47.9	
26	956	144.71	229.3	

Assay Class: High Sensitivity DNA Assay
 Data Path: C:\...ents and Settings\Bioanalyzer\2013-04-10\2013-04-10_002.xad


Created: 4/10/2013 12:01:20 PM
 Modified: 4/10/2013 12:55:02 PM

Electropherogram Summary Continued ...

... Peak table for sample 9 : sample 34 Resoni 1:6

Peak	Size [bp]	Conc. [pg/μl]	Molarity [pmol/l]	Observations
27	1,264	66.97	80.3	
28	1,704	9.69	8.6	
29	10,380	75.00	10.9	Upper Marker

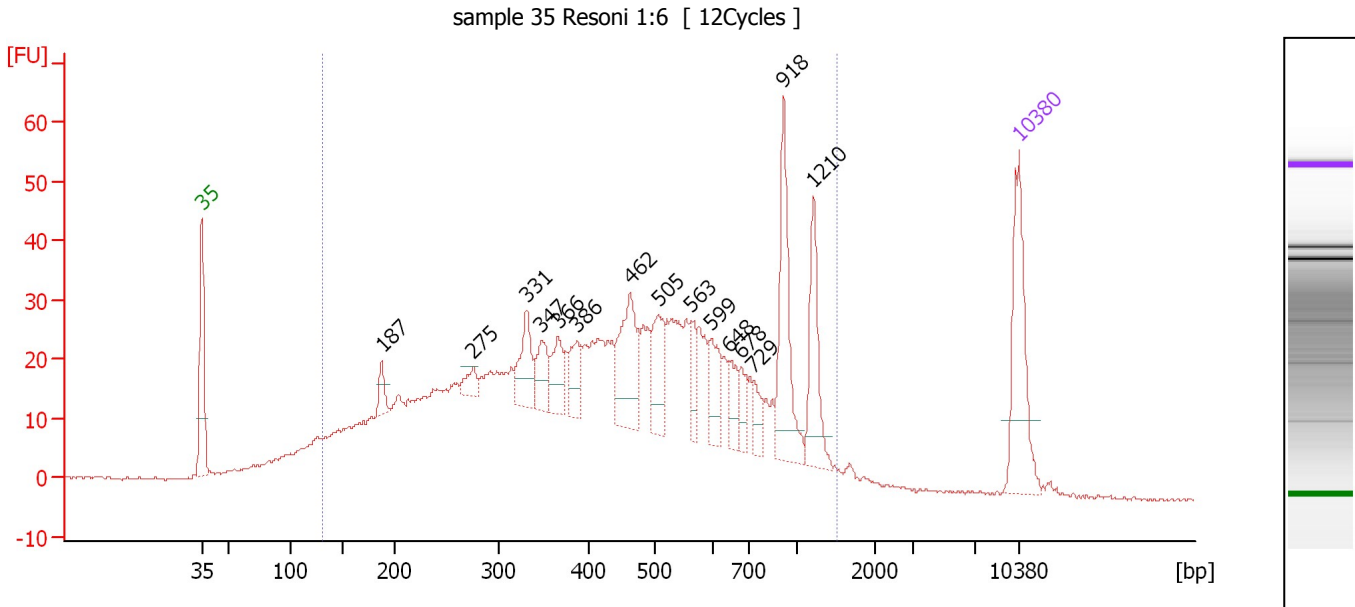
Region table for sample 9 : sample 34 Resoni 1:6

From [bp]	To [bp]	Average Size [bp]	Molarity [pmol/l]	Conc. [pg/μl]	Corr. Area	% of Total	Size distribution in CV [%]	Color
151	1,740	564	8,094.7	2,021.37	1,341.4	92	54.4	

Assay Class: High Sensitivity DNA Assay
 Data Path: C:\...ents and Settings\Bioanalyzer\2013-04-10\2013-04-10_002.xad

Created: 4/10/2013 12:01:20 PM
 Modified: 4/10/2013 12:55:02 PM

Electropherogram Summary Continued ...



Overall Results for sample 10 : sample 35 Resoni 1:6

Number of peaks found: 15 Corr. Area 1: 1,213.8
 Noise: 0.3

Peak table for sample 10 : sample 35 Resoni 1:6

Peak	Size [bp]	Conc. [pg/µl]	Molarity [pmol/l]	Observations
1	35	125.00	5,411.3	Lower Marker
2	187	17.69	143.1	
3	275	16.00	88.0	
4	331	47.47	217.4	
5	347	35.27	154.1	
6	366	33.94	140.6	
7	386	30.04	117.8	
8	462	84.63	277.7	
9	505	48.05	144.2	
10	563	22.79	61.4	
11	599	34.05	86.2	
12	648	21.60	50.5	
13	678	18.08	40.4	
14	729	17.10	35.5	
15	918	89.92	148.4	
16	1,210	57.96	72.6	
17	10,380	75.00	10.9	Upper Marker

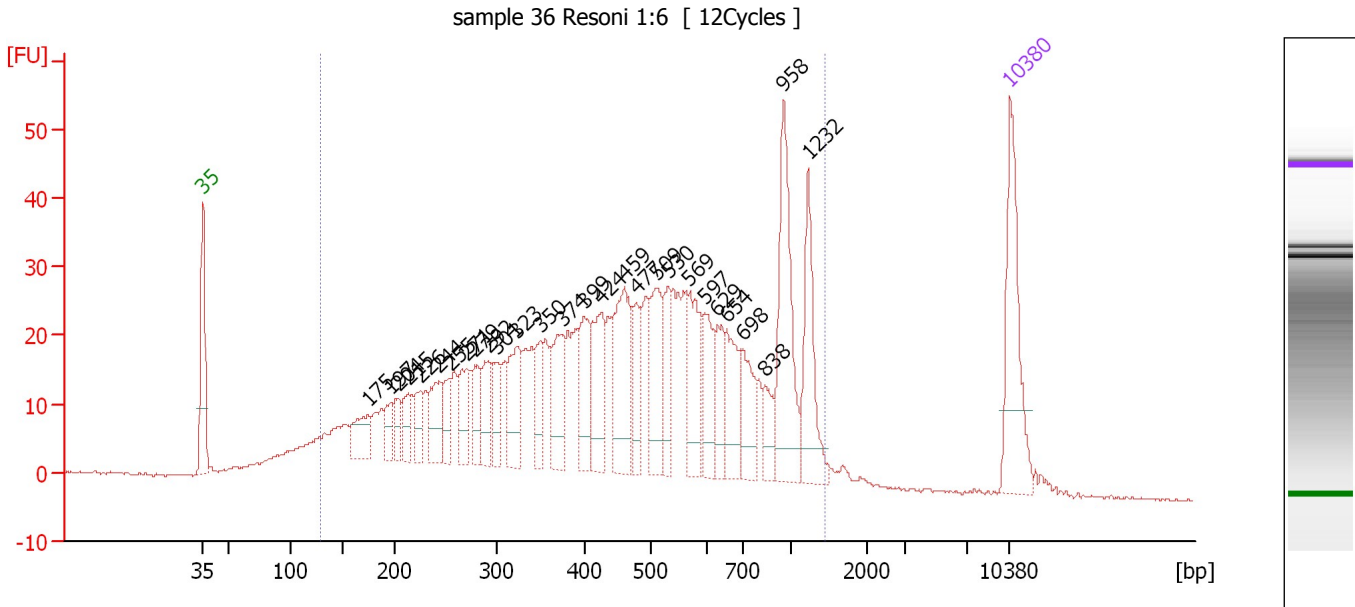
Region table for sample 10 : sample 35 Resoni 1:6

From [bp]	To [bp]	Average Size [bp]	Molarity [pmol/l]	Conc. [pg/µl]	Corr. Area	% of Total	Size distribution in CV [%]	Color
131	1,526	503	9,812.7	2,169.99	1,213.8	93	54.5	Blue

Assay Class: High Sensitivity DNA Assay
 Data Path: C:\...ents and Settings\Bioanalyzer\2013-04-10\2013-04-10_002.xad

Created: 4/10/2013 12:01:20 PM
 Modified: 4/10/2013 12:55:02 PM

Electropherogram Summary Continued ...



Overall Results for sample 11 : sample 36 Resoni 1:6

Number of peaks found: 28 Corr. Area 1: 1,131.2
 Noise: 0.2

Peak table for sample 11 : sample 36 Resoni 1:6

Peak	Size [bp]	Conc. [pg/μl]	Molarity [pmol/l]	Observations
1	35	125.00	5,411.3	Lower Marker
2	175	40.76	352.9	
3	197	22.33	171.7	
4	204	19.42	144.4	
5	215	26.44	186.5	
6	226	24.26	162.5	
7	244	43.02	266.7	
8	255	23.42	139.3	
9	271	36.77	205.6	
10	279	33.79	183.3	
11	292	36.24	188.2	
12	301	31.85	160.5	
13	323	54.53	255.9	
14	350	32.15	139.3	
15	374	59.63	241.8	
16	399	53.01	201.4	
17	424	60.01	214.3	
18	459	92.58	305.4	
19	477	36.51	115.9	
20	509	66.07	196.5	
21	530	37.59	107.4	
22	569	55.86	148.8	
23	597	40.54	102.8	
24	629	31.25	75.2	
25	654	47.28	109.5	
26	698	44.63	96.9	

Assay Class: High Sensitivity DNA Assay
 Data Path: C:\...ents and Settings\Bioanalyzer\2013-04-10\2013-04-10_002.xad


Created: 4/10/2013 12:01:20 PM
 Modified: 4/10/2013 12:55:02 PM

Electropherogram Summary Continued ...

... Peak table for sample 11 : sample 36 Resoni 1:6

Peak	Size [bp]	Conc. [pg/μl]	Molarity [pmol/l]	Observations
27	838	22.37	40.4	
28	958	103.69	164.0	
29	1,232	63.33	77.9	
30	10,380	75.00	10.9	Upper Marker

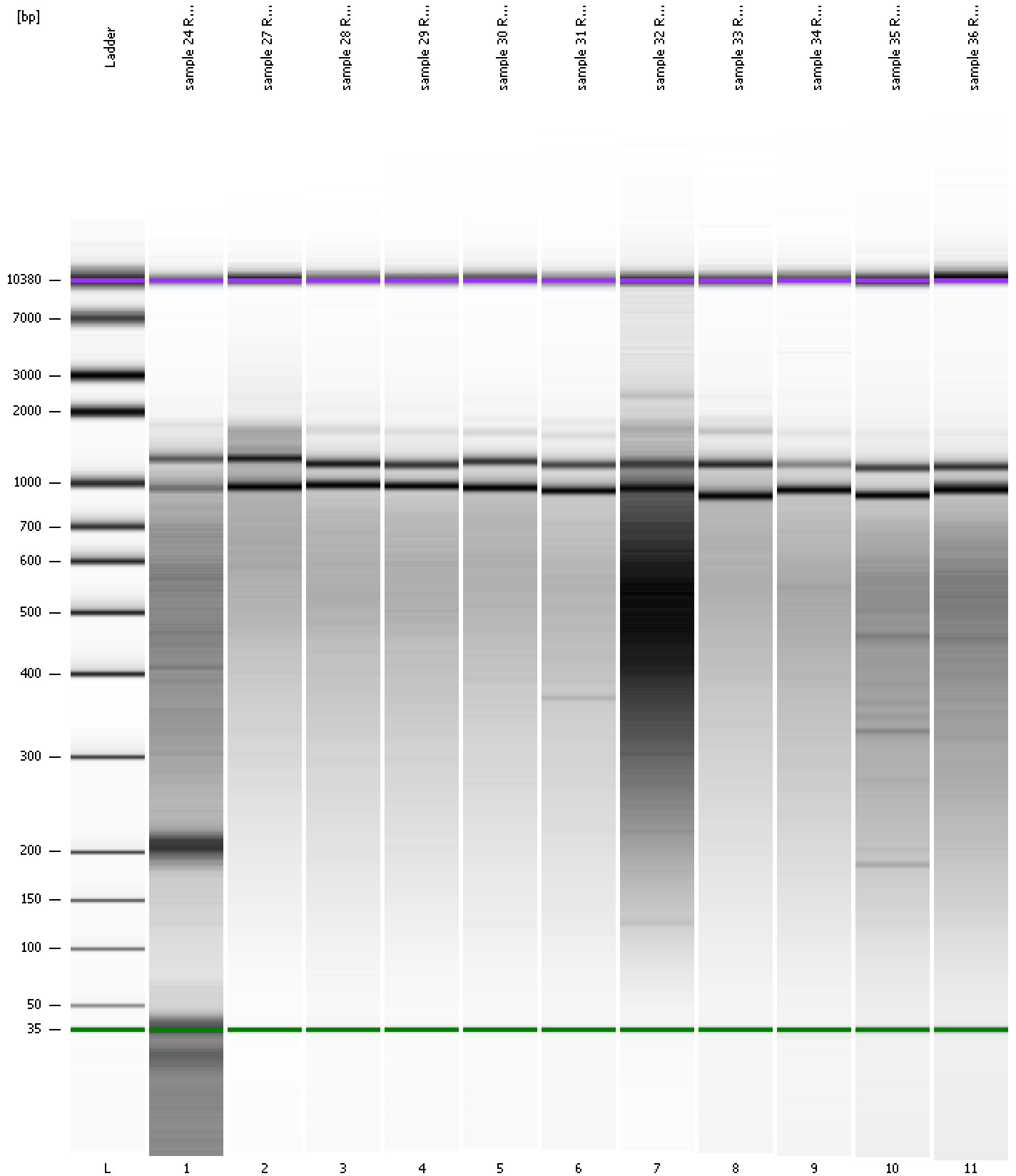
Region table for sample 11 : sample 36 Resoni 1:6

From [bp]	To [bp]	Average Size [bp]	Molarity [pmol/l]	Conc. [pg/μl]	Corr. Area	% of Total	Size distribution in CV [%]	Color
129	1,449	519	8,740.3	1,997.41	1,131.2	94	53.4	

Assay Class: High Sensitivity DNA Assay
Data Path: C:\...ents and Settings\Bioanalyzer\2013-04-10\2013-04-10_002.xad

Created: 4/10/2013 12:01:20 PM
Modified: 4/10/2013 12:55:02 PM

Gel Image



Assay Class: High Sensitivity DNA Assay
 Data Path: C:\...ents and Settings\Bioanalyzer\2013-04-10\2013-04-10_002.xad

Created: 4/10/2013 12:01:20 PM
 Modified: 4/10/2013 12:55:02 PM

Run Logbook

Description	Number	Source	Category	Sub Category	Time	Time Zone	User	Host
Run ended on port 1 (Number of wells acquired: 12)		Instrument	Run		4/10/2013 12:42:39 PM	(GMT --07:00) Pacific Standard Time	UC Davis	D8XSMGH1
Run started on port 1 (File: C:\Documents and Settings\Bioanalyzer\2013-04-10\2013-04-10_002.xad)		Instrument	Run		4/10/2013 12:01:26 PM	(GMT --07:00) Pacific Standard Time	UC Davis	D8XSMGH1
Product Number : G2938B		Instrument	Run		4/10/2013 12:01:26 PM	(GMT --07:00) Pacific Standard Time	UC Davis	D8XSMGH1
Name :		Instrument	Run		4/10/2013 12:01:26 PM	(GMT --07:00) Pacific Standard Time	UC Davis	D8XSMGH1
Vendor : Agilent Technologies		Instrument	Run		4/10/2013 12:01:26 PM	(GMT --07:00) Pacific Standard Time	UC Davis	D8XSMGH1
Serial# : DE13701086		Instrument	Run		4/10/2013 12:01:26 PM	(GMT --07:00) Pacific Standard Time	UC Davis	D8XSMGH1
Firmware : C.01.069		Instrument	Run		4/10/2013 12:01:26 PM	(GMT --07:00) Pacific Standard Time	UC Davis	D8XSMGH1
Cartridge : Electrode		Instrument	Run		4/10/2013 12:01:26 PM	(GMT --07:00) Pacific Standard Time	UC Davis	D8XSMGH1