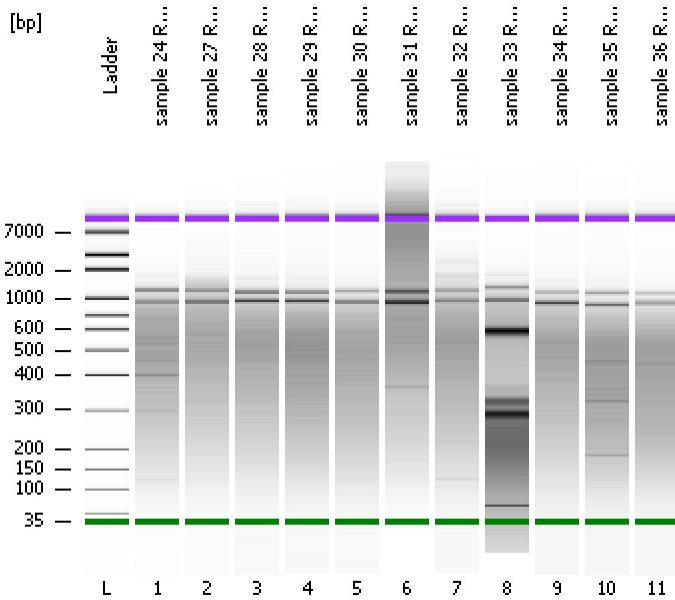


Assay Class: High Sensitivity DNA Assay  
Data Path: C:\...ents and Settings\Bioanalyzer\2013-04-10\2013-04-10\_004.xad

Created: 4/10/2013 4:15:21 PM  
Modified: 4/10/2013 5:13:10 PM

### Electrophoresis File Run Summary



#### Instrument Information:

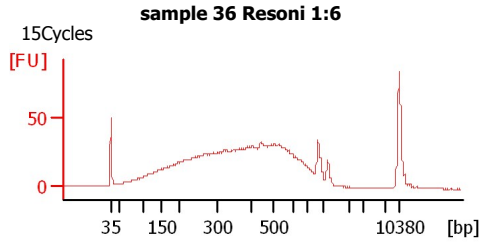
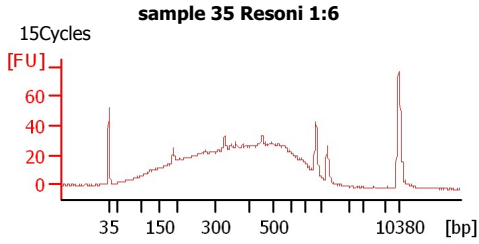
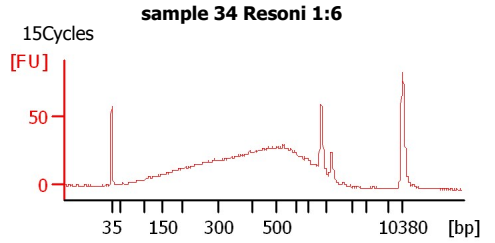
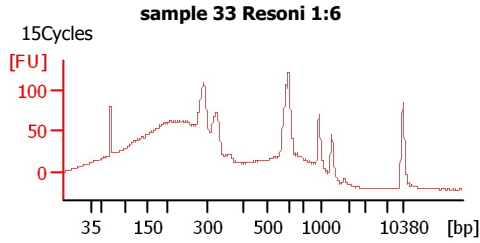
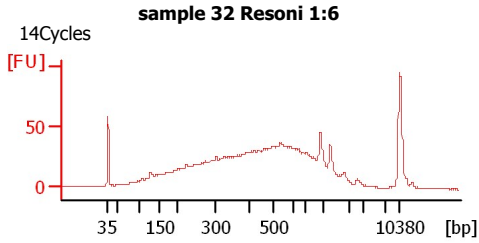
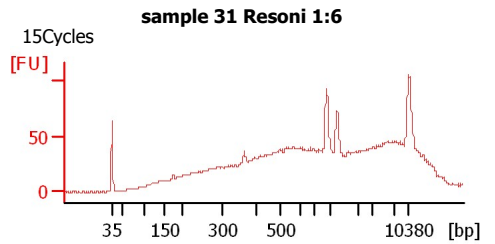
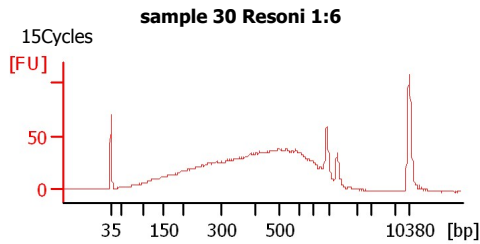
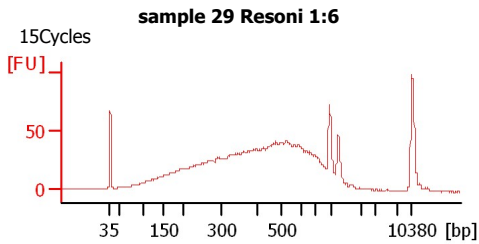
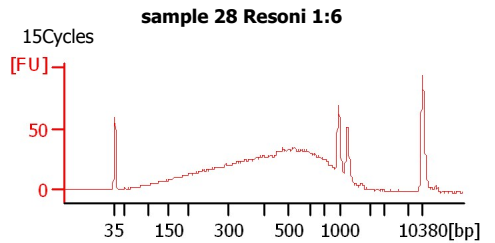
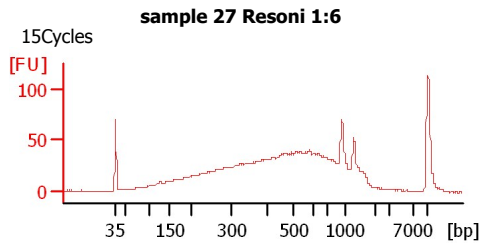
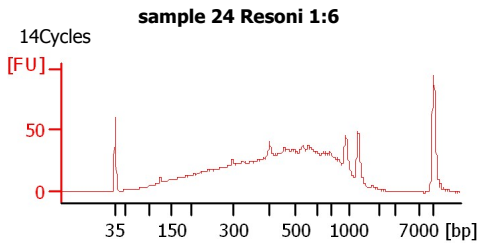
Instrument Name: DE13701086      Firmware: C.01.069  
Serial#: DE13701086      Type: G2938B

#### Assay Information:

Assay Origin Path: C:\Program Files\Agilent\2100 bioanalyzer\2100 expert\assays\dsDNA\High Sensitivity DNA.xsy  
Assay Class: High Sensitivity DNA Assay  
Version: 1.03  
Assay Comments: Copyright © 2003-2010 Agilent Technologies

#### Chip Information:

Chip Lot #:      Reagent Kit Lot #:      Chip Comments:



Assay Class: High Sensitivity DNA Assay  
Data Path: C:\...ents and Settings\Bioanalyzer\2013-04-10\2013-04-10\_004.xad

Created: 4/10/2013 4:15:21 PM  
Modified: 4/10/2013 5:13:10 PM

**Electrophoresis File Run Summary (Chip Summary)**

Sample Name	Sample Comment	Rest. Digest	Status	Observation	Result Label	Result Color
sample 24 Resoni 1:6	14Cycles	<input type="checkbox"/>	✓			
sample 27 Resoni 1:6	15Cycles	<input type="checkbox"/>	✓			
sample 28 Resoni 1:6	15Cycles	<input type="checkbox"/>	✓			
sample 29 Resoni 1:6	15Cycles	<input type="checkbox"/>	✓			
sample 30 Resoni 1:6	15Cycles	<input type="checkbox"/>	✓			
sample 31 Resoni 1:6	15Cycles	<input type="checkbox"/>	✓			
sample 32 Resoni 1:6	14Cycles	<input type="checkbox"/>	✓			
sample 33 Resoni 1:6	15Cycles	<input type="checkbox"/>	✓			
sample 34 Resoni 1:6	15Cycles	<input type="checkbox"/>	✓			
sample 35 Resoni 1:6	15Cycles	<input type="checkbox"/>	✓			
sample 36 Resoni 1:6	15Cycles	<input type="checkbox"/>	✓			
Ladder		<input type="checkbox"/>	✓			

**Chip Lot #**

**Reagent Kit Lot #**

**Chip Comments :**

Assay Class: High Sensitivity DNA Assay  
Data Path: C:\...ents and Settings\Bioanalyzer\2013-04-10\2013-04-10\_004.xad

Created: 4/10/2013 4:15:21 PM  
Modified: 4/10/2013 5:13:10 PM

**Electrophoresis Assay Details**

**General Analysis Settings**

Number of Available Sample and Ladder Wells (Max.) : 12  
Minimum Visible Range [s] : 32  
Maximum Visible Range [s] : 138  
Start Analysis Time Range [s] : 33  
End Analysis Time Range [s] : 137.5  
Ladder Concentration [pg/μl] : 1950  
Uses Standard Area for Ladder Fragments  
Lower Marker Concentration [pg/μl] : 125  
Upper Marker Concentration [pg/μl] : 75  
Used Upper Marker for Quantitation  
Standard Curve Fit is Point to Point  
Show Data Aligned to Lower and Upper Marker

**Integrator Settings**

Integration Start Time [s] : 33.05  
Integration End Time [s] : 137  
Slope Threshold : 0.8  
Height Threshold [FU] : 5  
Area Threshold : 0.1  
Width Threshold [s] : 0.6  
Baseline Plateau [s] : 0.5

**Filter Settings**

Filter Width [s] : 0.5  
Polynomial Order : 4

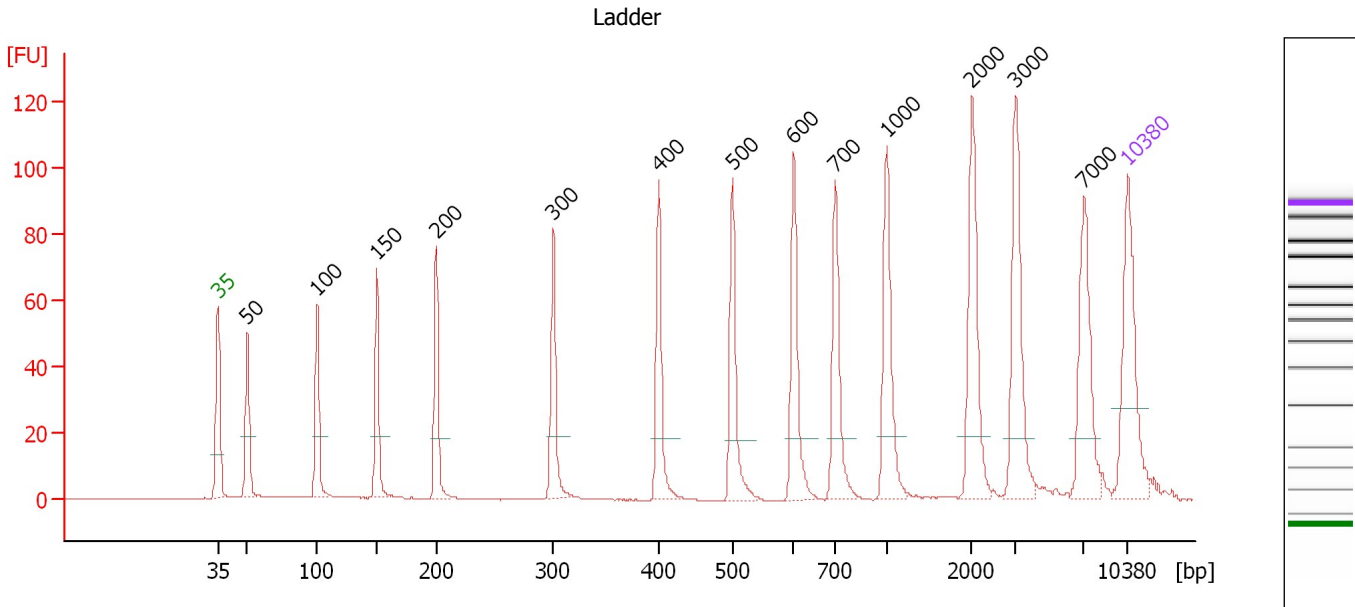
**Ladder**

Ladder Peak	Size	Area
1	35	160
2	50	210
3	100	208
4	150	221
5	200	242
6	300	270
7	400	305
8	500	306
9	600	336
10	700	321
11	1000	366
12	2000	413
13	3000	411
14	7000	400
15	10380	214

Assay Class: High Sensitivity DNA Assay  
 Data Path: C:\...ents and Settings\Bioanalyzer\2013-04-10\2013-04-10\_004.xad

Created: 4/10/2013 4:15:21 PM  
 Modified: 4/10/2013 5:13:10 PM

**Electropherogram Summary**



**Overall Results for Ladder**

Noise: 0.1

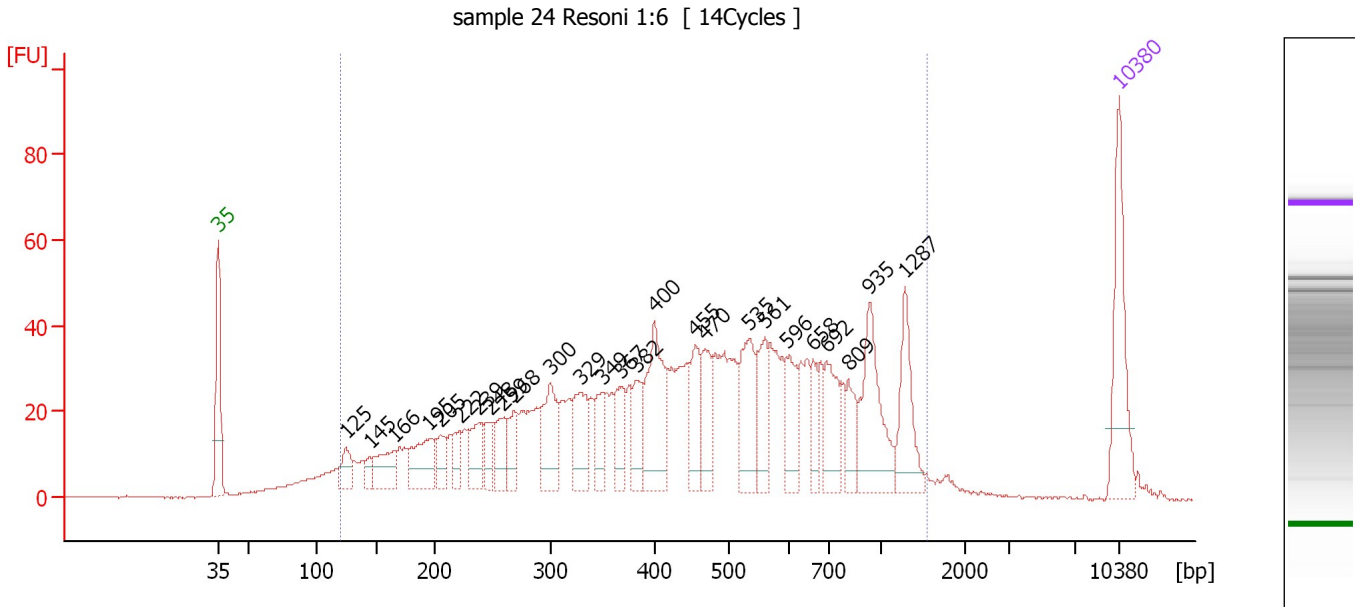
**Peak table for Ladder**

Peak	Size [bp]	Conc. [pg/μl]	Molarity [pmol/l]	Observations
1	35	125.00	5,411.3	Lower Marker
2	50	150.00	4,545.5	Ladder Peak
3	100	150.00	2,272.7	Ladder Peak
4	150	150.00	1,515.2	Ladder Peak
5	200	150.00	1,136.4	Ladder Peak
6	300	150.00	757.6	Ladder Peak
7	400	150.00	568.2	Ladder Peak
8	500	150.00	454.5	Ladder Peak
9	600	150.00	378.8	Ladder Peak
10	700	150.00	324.7	Ladder Peak
11	1,000	150.00	227.3	Ladder Peak
12	2,000	150.00	113.6	Ladder Peak
13	3,000	150.00	75.8	Ladder Peak
14	7,000	150.00	32.5	Ladder Peak
15	10,380	75.00	10.9	Upper Marker

Assay Class: High Sensitivity DNA Assay  
 Data Path: C:\...ents and Settings\Bioanalyzer\2013-04-10\2013-04-10\_004.xad

Created: 4/10/2013 4:15:21 PM  
 Modified: 4/10/2013 5:13:10 PM

**Electropherogram Summary Continued ...**



**Overall Results for sample 1 : sample 24 Resoni 1:6**

Number of peaks found: 26                      Corr. Area 1: 1,499.1  
 Noise: 0.2


**Peak table for sample 1 : sample 24 Resoni 1:6**

Peak	Size [bp]	Conc. [pg/μl]	Molarity [pmol/l]	Observations
1	35	125.00	5,411.3	Lower Marker
2	125	32.93	400.0	
3	145	15.91	165.7	
4	166	50.62	462.3	
5	195	65.33	506.4	
6	205	30.35	224.2	
7	222	26.54	181.1	
8	239	43.53	276.4	
9	248	27.65	168.8	
10	259	36.83	215.2	
11	268	34.69	195.8	
12	300	74.96	379.0	
13	329	59.74	274.9	
14	349	36.40	158.0	
15	367	38.92	160.5	
16	382	42.07	166.8	
17	400	102.51	388.7	
18	455	51.86	172.7	
19	470	46.62	150.4	
20	535	71.52	202.6	
21	561	47.96	129.5	
22	596	44.30	112.6	
23	658	27.10	62.4	
24	692	52.97	116.0	
25	809	29.89	56.0	
26	935	90.06	145.9	


Assay Class: High Sensitivity DNA Assay  
Data Path: C:\...ents and Settings\Bioanalyzer\2013-04-10\2013-04-10\_004.xad

Created: 4/10/2013 4:15:21 PM  
Modified: 4/10/2013 5:13:10 PM

**Electropherogram Summary Continued ...****... Peak table for sample 1 : sample 24 Resoni 1:6**

Peak	Size [bp]	Conc. [pg/ $\mu$ l]	Molarity [pmol/l]	Observations
27	1,287	58.09	68.4	
28	 10,380	75.00	10.9	Upper Marker

**Region table for sample 1 : sample 24 Resoni 1:6**

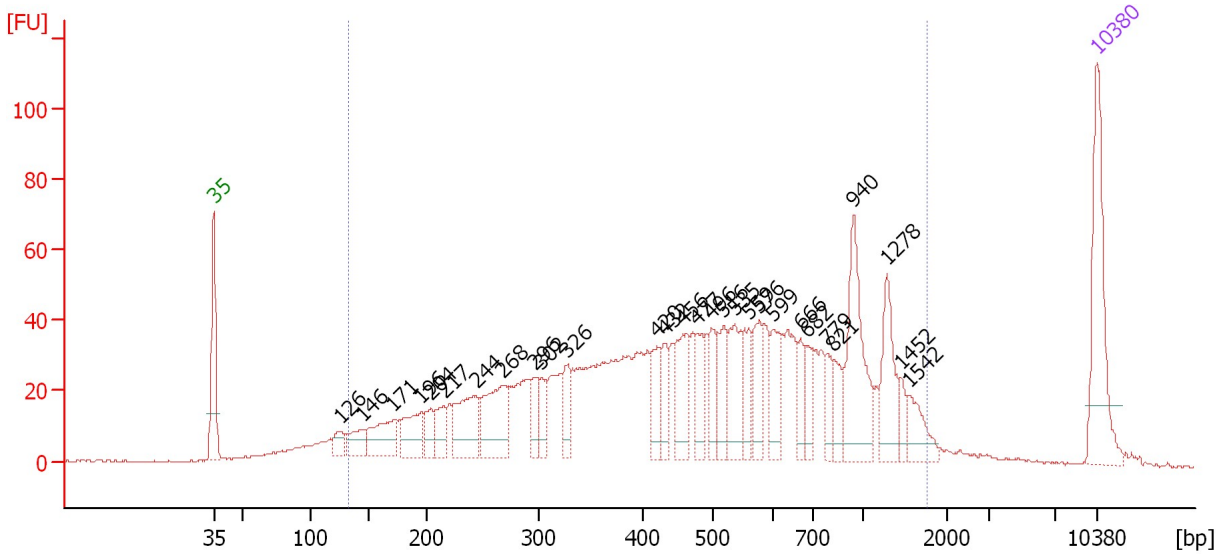
From [bp]	To [bp]	Average Size [bp]	Molarity [pmol/l]	Conc. [pg/ $\mu$ l]	Corr. Area	% of Total	Size distribution in CV [%]	Color
119	1,545	512	9,437.8	2,081.80	1,499.1	95	54.7	

Assay Class: High Sensitivity DNA Assay  
 Data Path: C:\...ents and Settings\Bioanalyzer\2013-04-10\2013-04-10\_004.xad

Created: 4/10/2013 4:15:21 PM  
 Modified: 4/10/2013 5:13:10 PM

**Electropherogram Summary Continued ...**

sample 27 Resoni 1:6 [ 15Cycles ]



**Overall Results for sample 2 : sample 27 Resoni 1:6**

Number of peaks found: 29                      Corr. Area 1: 1,662.0  
 Noise: 0.3

**Peak table for sample 2 : sample 27 Resoni 1:6**

Peak	Size [bp]	Conc. [pg/μl]	Molarity [pmol/l]	Observations
1	35	125.00	5,411.3	Lower Marker
2	126	18.24	218.9	
3	146	29.34	305.3	
4	171	51.72	456.9	
5	196	44.62	344.8	
6	204	23.10	171.2	
7	217	26.09	182.5	
8	244	67.15	416.6	
9	268	79.23	447.8	
10	296	24.70	126.6	
11	302	23.98	120.4	
12	326	29.17	135.7	
13	420	31.15	112.3	
14	432	26.52	93.1	
15	456	52.07	173.0	
16	477	30.13	95.7	
17	496	32.30	98.6	
18	516	35.48	104.1	
19	535	49.43	140.0	
20	559	29.65	80.3	
21	576	33.71	88.7	
22	599	32.70	82.8	
23	666	21.04	47.8	
24	682	23.19	51.5	
25	779	17.87	34.8	
26	821	22.01	40.6	

Assay Class: High Sensitivity DNA Assay  
 Data Path: C:\...ents and Settings\Bioanalyzer\2013-04-10\2013-04-10\_004.xad

Created: 4/10/2013 4:15:21 PM  
 Modified: 4/10/2013 5:13:10 PM

### Electropherogram Summary Continued ...

#### ... Peak table for sample 2 : sample 27 Resoni 1:6

Peak	Size [bp]	Conc. [pg/μl]	Molarity [pmol/l]	Observations
27	940	86.81	139.9	
28	1,278	47.55	56.4	
29	1,452	10.26	10.7	
30	1,542	23.11	22.7	
31	10,380	75.00	10.9	Upper Marker

#### Region table for sample 2 : sample 27 Resoni 1:6

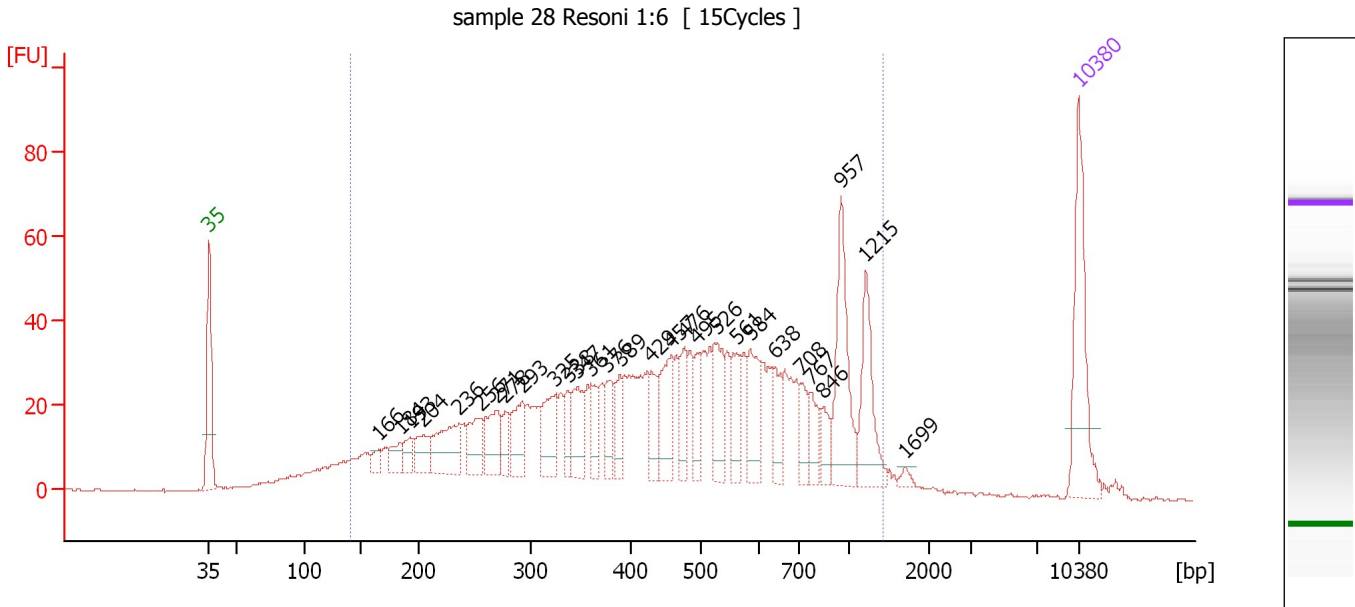
From [bp]	To [bp]	Average Size [bp]	Molarity [pmol/l]	Conc. [pg/μl]	Corr. Area	% of Total	Size distribution in CV [%]	Color
133	1,760	562	7,013.3	1,661.85	1,662.0	93	59.1	



Assay Class: High Sensitivity DNA Assay  
 Data Path: C:\...ents and Settings\Bioanalyzer\2013-04-10\2013-04-10\_004.xad

Created: 4/10/2013 4:15:21 PM  
 Modified: 4/10/2013 5:13:10 PM

**Electropherogram Summary Continued ...**



**Overall Results for sample 3 : sample 28 Resoni 1:6**

Number of peaks found: 29                      Corr. Area 1: 1,401.8  
 Noise: 0.2

**Peak table for sample 3 : sample 28 Resoni 1:6**

Peak	Size [bp]	Conc. [pg/μl]	Molarity [pmol/l]	Observations
1	35	125.00	5,411.3	Lower Marker
2	166	12.04	110.1	
3	184	19.42	159.8	
4	193	18.30	143.6	
5	204	31.05	230.2	
6	236	65.79	421.9	
7	256	41.27	244.5	
8	271	47.40	265.5	
9	278	18.86	102.8	
10	293	43.26	223.4	
11	325	50.10	233.3	
12	338	23.79	106.6	
13	347	41.26	180.1	
14	361	22.80	95.6	
15	376	30.15	121.5	
16	389	23.23	90.4	
17	429	32.51	114.9	
18	457	53.61	177.8	
19	476	33.68	107.1	
20	495	26.70	81.8	
21	526	47.61	137.0	
22	561	33.76	91.2	
23	584	44.75	116.2	
24	638	24.66	58.6	
25	708	24.07	51.5	
26	767	20.06	39.6	

Assay Class: High Sensitivity DNA Assay  
 Data Path: C:\...ents and Settings\Bioanalyzer\2013-04-10\2013-04-10\_004.xad


Created: 4/10/2013 4:15:21 PM  
 Modified: 4/10/2013 5:13:10 PM

### Electropherogram Summary Continued ...

#### ... Peak table for sample 3 : sample 28 Resoni 1:6

Peak	Size [bp]	Conc. [pg/μl]	Molarity [pmol/l]	Observations
27	846	17.70	31.7	
28	957	83.83	132.7	
29	1,215	57.56	71.8	
30	1,699	4.36	3.9	
31	10,380	75.00	10.9	Upper Marker

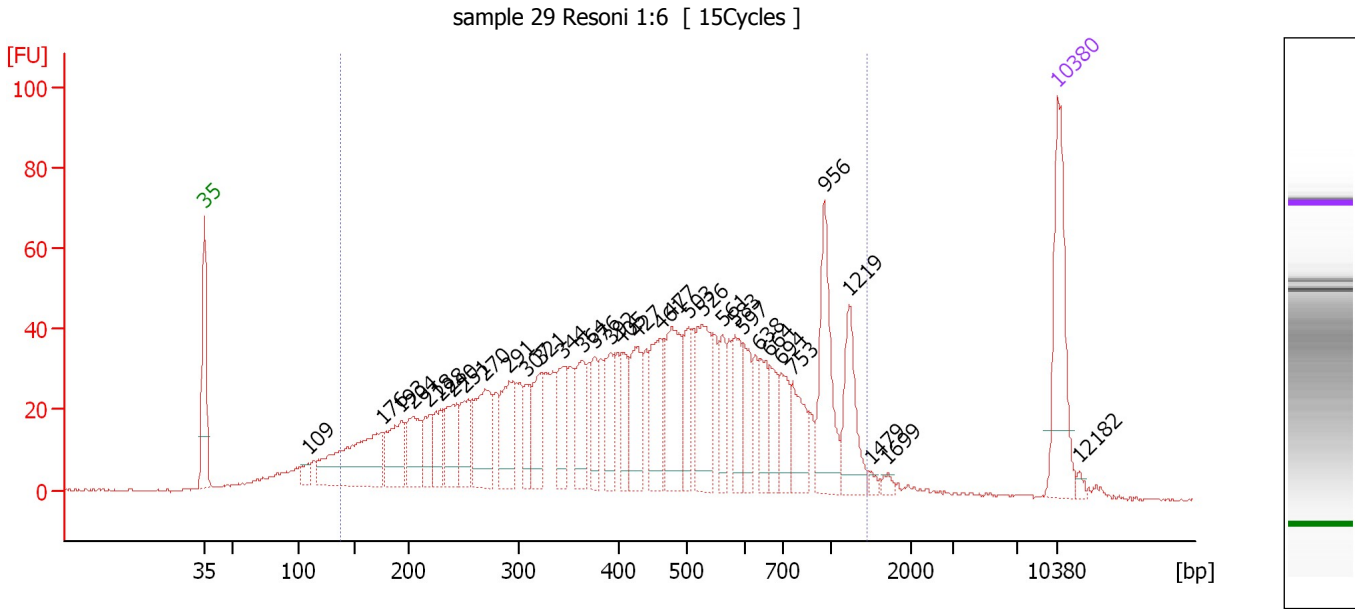
#### Region table for sample 3 : sample 28 Resoni 1:6

From [bp]	To [bp]	Average Size [bp]	Molarity [pmol/l]	Conc. [pg/μl]	Corr. Area	% of Total	Size distribution in CV [%]	Color
140	1,434	522	7,742.5	1,817.28	1,401.8	92	52.3	

Assay Class: High Sensitivity DNA Assay  
 Data Path: C:\...ents and Settings\Bioanalyzer\2013-04-10\2013-04-10\_004.xad

Created: 4/10/2013 4:15:21 PM  
 Modified: 4/10/2013 5:13:10 PM

**Electropherogram Summary Continued ...**



**Overall Results for sample 4 : sample 29 Resoni 1:6**

Number of peaks found: 34                      Corr. Area 1: 1,708.4  
 Noise: 0.3

**Peak table for sample 4 : sample 29 Resoni 1:6**

Peak	Size [bp]	Conc. [pg/μl]	Molarity [pmol/l]	Observations
1	35	125.00	5,411.3	Lower Marker
2	109	13.32	185.5	
3	176	140.49	1,211.5	
4	193	64.51	506.4	
5	204	53.21	396.0	
6	218	35.45	246.2	
7	228	35.28	234.1	
8	240	50.59	318.8	
9	251	41.98	253.8	
10	270	78.32	440.3	
11	291	62.03	322.6	
12	307	27.20	134.2	
13	321	45.29	213.7	
14	344	42.50	187.4	
15	364	44.35	184.8	
16	376	31.36	126.4	
17	392	37.66	145.7	
18	405	30.63	114.6	
19	427	52.91	187.9	
20	461	64.01	210.2	
21	477	79.62	253.0	
22	503	33.50	101.0	
23	526	72.47	208.8	
24	561	31.16	84.1	
25	583	38.25	99.3	
26	597	36.88	93.6	

Assay Class: High Sensitivity DNA Assay  
Data Path: C:\...ents and Settings\Bioanalyzer\2013-04-10\2013-04-10\_004.xad


Created: 4/10/2013 4:15:21 PM  
Modified: 4/10/2013 5:13:10 PM

**Electropherogram Summary Continued ...**

**... Peak table for sample 4 : sample 29 Resoni 1:6**

Peak	Size [bp]	Conc. [pg/μl]	Molarity [pmol/l]	Observations
27	638	31.98	75.9	
28	664	28.59	65.2	
29	694	31.60	68.9	
30	753	40.95	82.4	
31	956	77.96	123.5	
32	1,219	50.51	62.8	
33	1,479	3.36	3.4	
34	1,699	4.43	4.0	
35	10,380	75.00	10.9	Upper Marker
36	12,182	0.00	0.0	

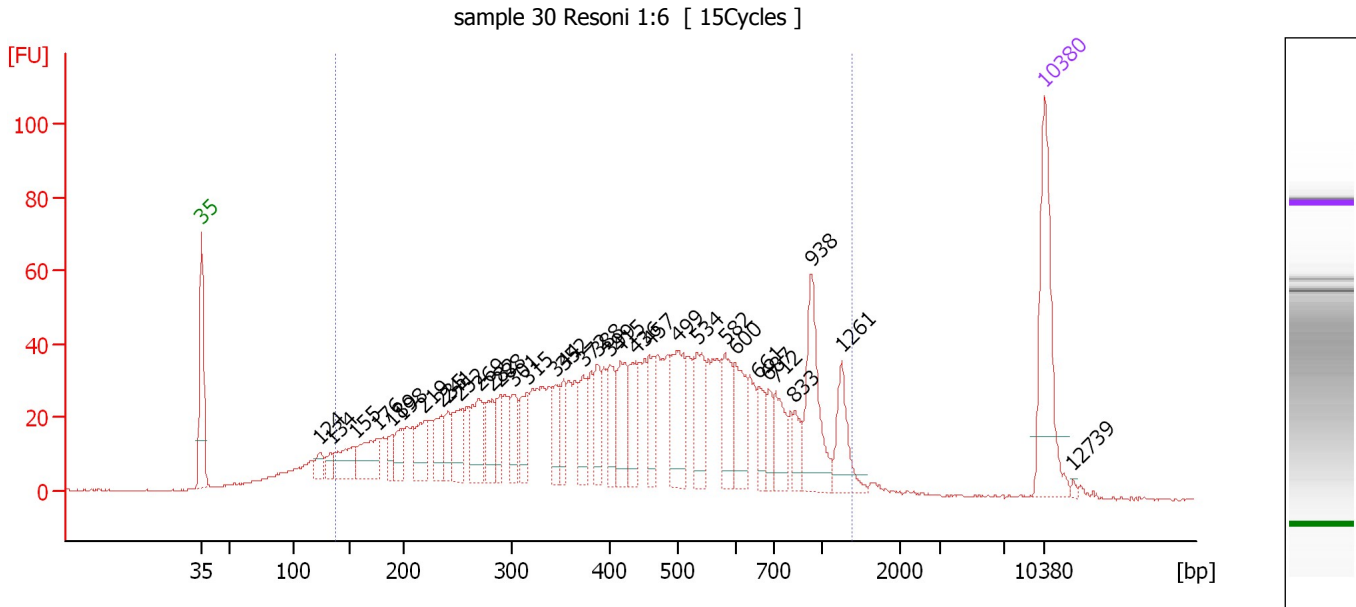
**Region table for sample 4 : sample 29 Resoni 1:6**

From [bp]	To [bp]	Average Size [bp]	Molarity [pmol/l]	Conc. [pg/μl]	Corr. Area	% of Total	Size distribution in CV [%]	Color
137	1,435	495	8,689.8	1,954.58	1,708.4	92	52.2	

Assay Class: High Sensitivity DNA Assay  
 Data Path: C:\...ents and Settings\Bioanalyzer\2013-04-10\2013-04-10\_004.xad

Created: 4/10/2013 4:15:21 PM  
 Modified: 4/10/2013 5:13:10 PM

**Electropherogram Summary Continued ...**



**Overall Results for sample 5 : sample 30 Resoni 1:6**

Number of peaks found: 34                      Corr. Area 1: 1,617.6  
 Noise: 0.2

**Peak table for sample 5 : sample 30 Resoni 1:6**

Peak	Size [bp]	Conc. [pg/μl]	Molarity [pmol/l]	Observations
1	35	125.00	5,411.3	Lower Marker
2	124	14.06	171.8	
3	134	10.07	114.2	
4	155	36.04	351.5	
5	176	45.06	387.3	
6	189	15.42	123.7	
7	198	22.03	168.5	
8	219	35.38	245.0	
9	235	31.66	204.2	
10	241	20.70	130.2	
11	252	35.52	213.9	
12	269	44.96	252.9	
13	282	27.47	147.8	
14	288	23.15	121.6	
15	301	26.22	131.8	
16	315	28.97	139.4	
17	344	23.28	102.6	
18	352	23.56	101.4	
19	372	32.55	132.5	
20	388	30.84	120.6	
21	399	32.07	121.6	
22	415	40.06	146.3	
23	436	32.37	112.5	
24	457	29.58	98.0	
25	499	57.23	173.6	
26	534	44.40	126.0	

Assay Class: High Sensitivity DNA Assay  
 Data Path: C:\...ents and Settings\Bioanalyzer\2013-04-10\2013-04-10\_004.xad

Created: 4/10/2013 4:15:21 PM  
 Modified: 4/10/2013 5:13:10 PM

**Electropherogram Summary Continued ...**

**... Peak table for sample 5 : sample 30 Resoni 1:6**

Peak	Size [bp]	Conc. [pg/μl]	Molarity [pmol/l]	Observations
27	582	37.06	96.5	
28	600	39.19	99.0	
29	661	21.77	49.9	
30	687	16.32	36.0	
31	712	31.03	66.0	
32	833	15.74	28.6	
33	938	63.62	102.8	
34	1,261	32.10	38.6	
35	10,380	75.00	10.9	Upper Marker
36	12,739	0.00	0.0	

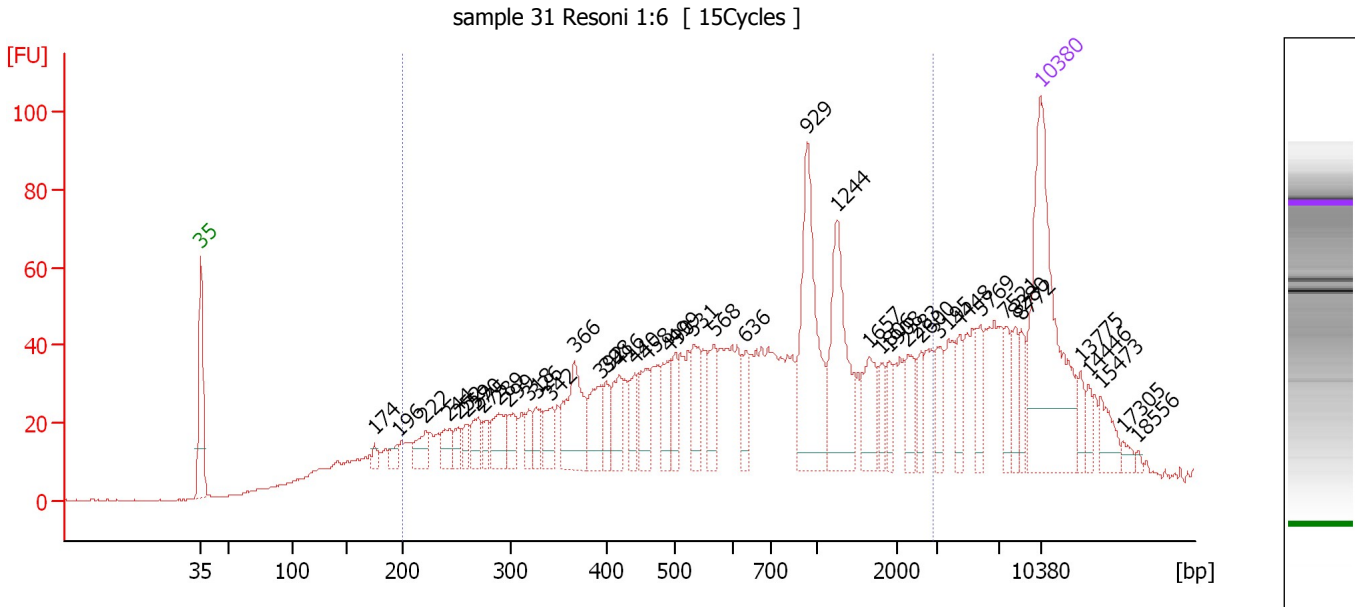
**Region table for sample 5 : sample 30 Resoni 1:6**

From [bp]	To [bp]	Average Size [bp]	Molarity [pmol/l]	Conc. [pg/μl]	Corr. Area	% of Total	Size distribution in CV [%]	Color
139	1,397	481	7,440.8	1,651.50	1,617.6	92	51.1	

Assay Class: High Sensitivity DNA Assay  
 Data Path: C:\...ents and Settings\Bioanalyzer\2013-04-10\2013-04-10\_004.xad

Created: 4/10/2013 4:15:21 PM  
 Modified: 4/10/2013 5:13:10 PM

**Electropherogram Summary Continued ...**



**Overall Results for sample 6 : sample 31 Resoni 1:6**

Number of peaks found: 42                      Corr. Area 1: 1,564.1  
 Noise: 0.2

**Peak table for sample 6 : sample 31 Resoni 1:6**


Peak	Size [bp]	Conc. [pg/μl]	Molarity [pmol/l]	Observations
1	35	125.00	5,411.3	Lower Marker
2	174	3.99	34.6	
3	196	5.36	41.4	
4	222	12.52	85.7	
5	244	10.60	65.9	
6	252	7.83	47.0	
7	259	7.36	43.1	
8	270	11.41	64.1	
9	275	7.82	43.1	
10	289	17.71	92.7	
11	299	12.93	65.5	
12	318	8.47	40.3	
13	326	9.80	45.5	
14	342	12.40	54.9	
15	366	36.54	151.3	
16	392	20.97	81.0	
17	398	10.34	39.3	
18	416	18.33	66.7	
19	440	13.19	45.4	
20	458	17.90	59.2	
21	490	17.17	53.2	
22	499	11.80	35.8	
23	531	19.52	55.7	
24	568	16.52	44.0	
25	636	11.27	26.9	
26	929	64.02	104.4	

Assay Class: High Sensitivity DNA Assay  
 Data Path: C:\...ents and Settings\Bioanalyzer\2013-04-10\2013-04-10\_004.xad

Created: 4/10/2013 4:15:21 PM  
 Modified: 4/10/2013 5:13:10 PM

**Electropherogram Summary Continued ...**

**... Peak table for sample 6 : sample 31 Resoni 1:6**

Peak	Size [bp]	Conc. [pg/µl]	Molarity [pmol/l]	Observations
27	1,244	46.73	56.9	
28	1,657	16.84	15.4	
29	1,806	6.89	5.8	
30	1,908	6.89	5.5	
31	2,283	11.43	7.6	
32	2,600	7.16	4.2	
33	3,195	10.31	4.9	
34	4,448	7.97	2.7	
35	5,769	9.90	2.6	
36	7,521	8.36	1.7	
37	8,280	8.08	1.5	
38	8,772	7.76	1.3	
39	 10,380	75.00	10.9	Upper Marker
40	13,775	0.00	0.0	
41	14,446	0.00	0.0	
42	15,473	0.00	0.0	
43	17,305	0.00	0.0	
44	18,556	0.00	0.0	

**Region table for sample 6 : sample 31 Resoni 1:6**

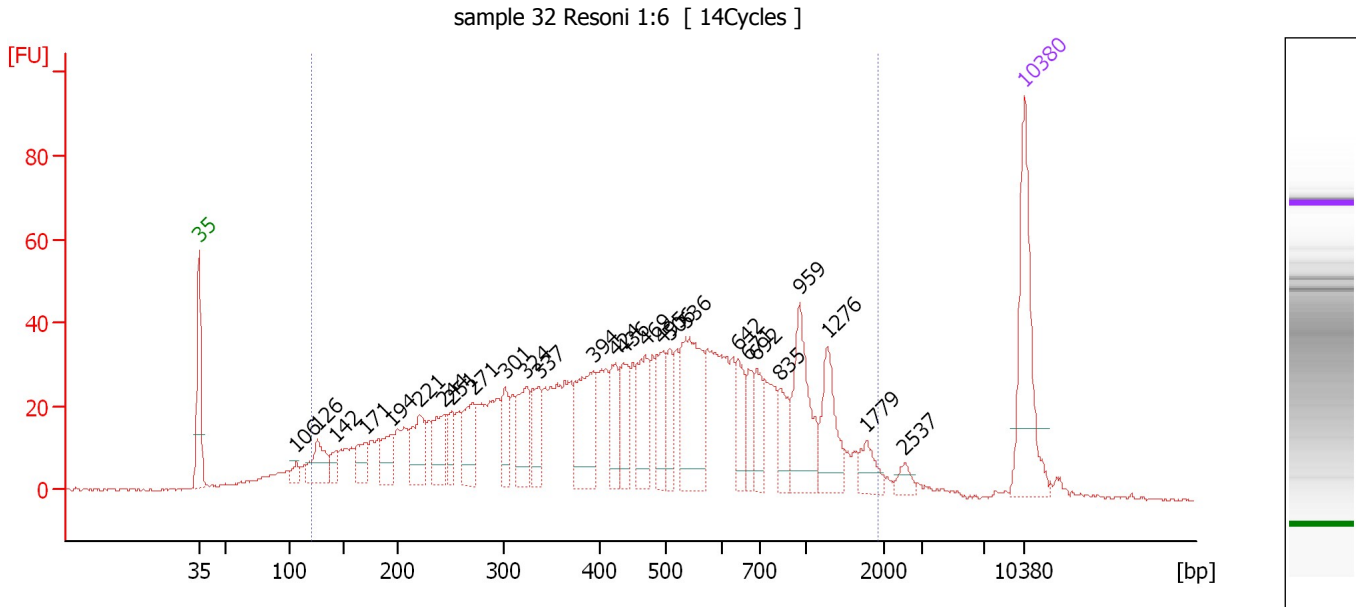
From [bp]	To [bp]	Average Size [bp]	Molarity [pmol/l]	Conc. [pg/µl]	Corr. Area	% of Total	Size distribution in CV [%]	Color
200	2,929	840	2,713.7	833.39	1,564.1	76	75.8	



Assay Class: High Sensitivity DNA Assay  
 Data Path: C:\...ents and Settings\Bioanalyzer\2013-04-10\2013-04-10\_004.xad

Created: 4/10/2013 4:15:21 PM  
 Modified: 4/10/2013 5:13:10 PM

**Electropherogram Summary Continued ...**



**Overall Results for sample 7 : sample 32 Resoni 1:6**

Number of peaks found: 27                      Corr. Area 1: 1,493.4  
 Noise: 0.3

**Peak table for sample 7 : sample 32 Resoni 1:6**

Peak	Size [bp]	Conc. [pg/μl]	Molarity [pmol/l]	Observations
1	35	125.00	5,411.3	Lower Marker
2	106	10.04	143.4	
3	126	40.45	485.7	
4	142	14.98	159.4	
5	171	26.08	230.9	
6	194	30.60	238.4	
7	221	46.21	316.1	
8	244	39.90	248.3	
9	251	20.93	126.3	
10	271	43.50	243.1	
11	301	29.34	147.6	
12	324	48.07	224.7	
13	337	37.14	167.0	
14	394	71.91	276.8	
15	424	35.35	126.4	
16	436	37.32	129.8	
17	469	49.50	159.9	
18	495	39.35	120.5	
19	506	25.64	76.8	
20	536	96.92	274.1	
21	642	29.59	69.8	
22	671	22.38	50.6	
23	692	26.28	57.6	
24	835	22.66	41.1	
25	959	67.55	106.7	
26	1,276	43.89	52.1	

Assay Class: High Sensitivity DNA Assay  
 Data Path: C:\...ents and Settings\Bioanalyzer\2013-04-10\2013-04-10\_004.xad


Created: 4/10/2013 4:15:21 PM  
 Modified: 4/10/2013 5:13:10 PM

### Electropherogram Summary Continued ...

#### ... Peak table for sample 7 : sample 32 Resoni 1:6

Peak	Size [bp]	Conc. [pg/μl]	Molarity [pmol/l]	Observations
27	1,779	16.37	13.9	
28	2,537	7.66	4.6	
29	10,380	75.00	10.9	Upper Marker

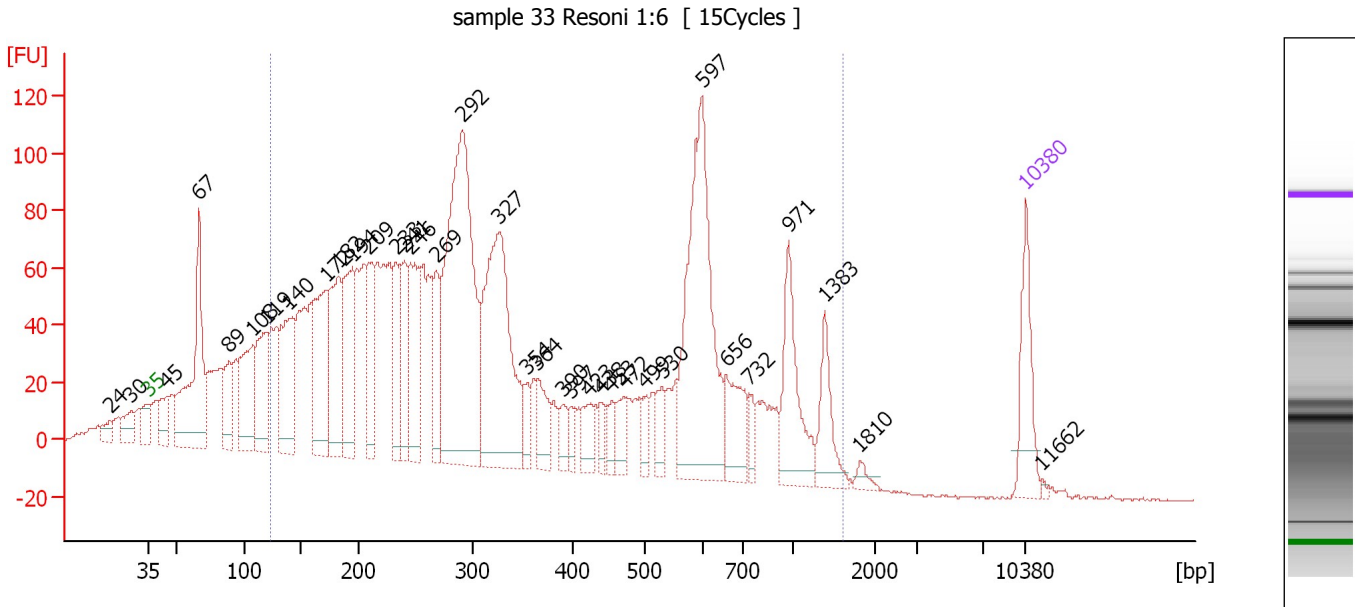
#### Region table for sample 7 : sample 32 Resoni 1:6

From [bp]	To [bp]	Average Size [bp]	Molarity [pmol/l]	Conc. [pg/μl]	Corr. Area	% of Total	Size distribution in CV [%]	Color
122	1,931	540	7,444.0	1,659.43	1,493.4	94	62.1	

Assay Class: High Sensitivity DNA Assay  
 Data Path: C:\...ents and Settings\Bioanalyzer\2013-04-10\2013-04-10\_004.xad

Created: 4/10/2013 4:15:21 PM  
 Modified: 4/10/2013 5:13:10 PM

**Electropherogram Summary Continued ...**



**Overall Results for sample 8 : sample 33 Resoni 1:6**

Number of peaks found: 35                      Corr. Area 1: 3,448.9  
 Noise: 0.4

**Peak table for sample 8 : sample 33 Resoni 1:6**

Peak	Size [bp]	Conc. [pg/μl]	Molarity [pmol/l]	Observations
1	24	0.00	0.0	
2	30	0.00	0.0	
3	35	125.00	5,411.3	Lower Marker
4	45	64.54	2,164.7	
5	67	340.12	7,739.0	
6	89	84.37	1,434.0	
7	108	185.38	2,609.2	
8	119	161.97	2,058.4	
9	140	209.11	2,269.9	
10	172	234.94	2,073.2	
11	182	188.49	1,565.4	
12	194	184.28	1,438.4	
13	209	121.46	880.0	
14	233	98.66	641.1	
15	241	119.70	753.5	
16	246	168.64	1,039.2	
17	269	92.57	521.5	
18	292	627.77	3,262.1	
19	327	405.03	1,875.1	
20	354	31.20	133.5	
21	364	61.11	254.1	
22	390	31.79	123.6	
23	397	21.43	81.8	
24	423	43.51	156.0	
25	438	23.77	82.3	
26	453	22.24	74.3	

Assay Class: High Sensitivity DNA Assay  
 Data Path: C:\...ents and Settings\Bioanalyzer\2013-04-10\2013-04-10\_004.xad


Created: 4/10/2013 4:15:21 PM  
 Modified: 4/10/2013 5:13:10 PM

**Electropherogram Summary Continued ...**

**... Peak table for sample 8 : sample 33 Resoni 1:6**

Peak	Size [bp]	Conc. [pg/µl]	Molarity [pmol/l]	Observations
27	472	42.94	137.8	
28	499	25.72	78.1	
29	530	34.94	99.9	
30	597	385.55	978.0	
31	656	84.60	195.5	
32	732	23.61	48.9	
33	971	125.49	195.8	
34	1,383	66.49	72.9	
35	1,810	10.74	9.0	
36	10,380	75.00	10.9	Upper Marker
37	11,662	0.00	0.0	

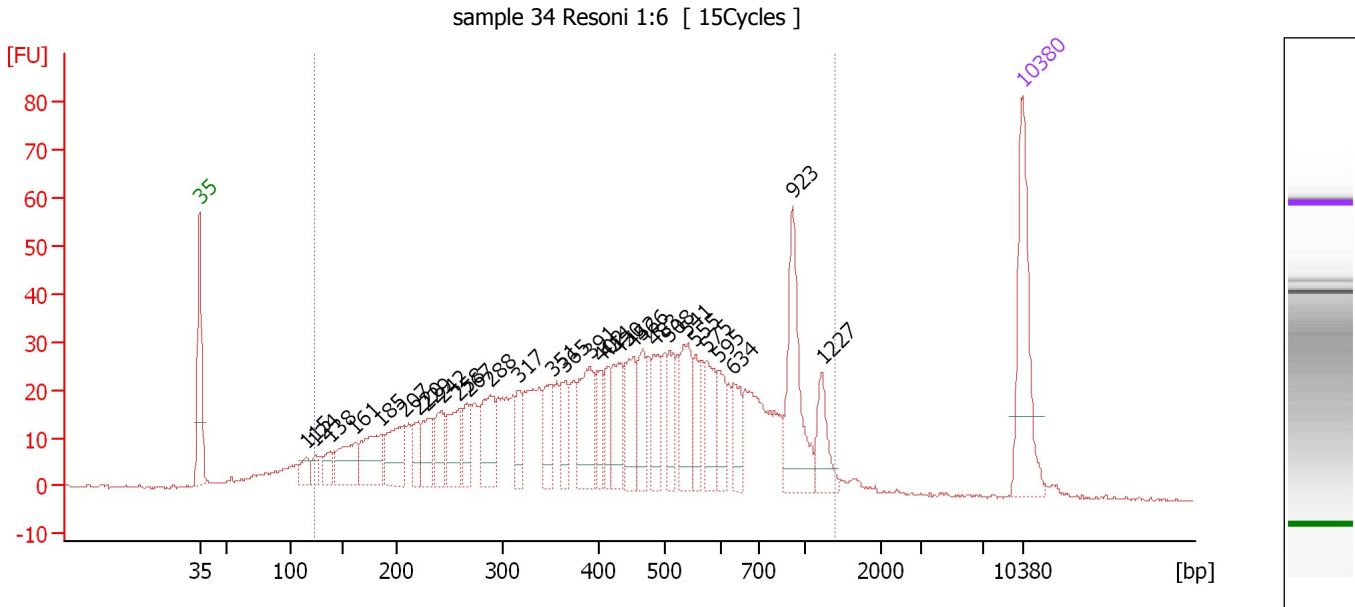
**Region table for sample 8 : sample 33 Resoni 1:6**

From [bp]	To [bp]	Average Size [bp]	Molarity [pmol/l]	Conc. [pg/µl]	Corr. Area	% of Total	Size distribution in CV [%]	Color
124	1,604	412	26,435.6	4,504.05	3,448.9	82	66.5	

Assay Class: High Sensitivity DNA Assay  
 Data Path: C:\...ents and Settings\Bioanalyzer\2013-04-10\2013-04-10\_004.xad

Created: 4/10/2013 4:15:21 PM  
 Modified: 4/10/2013 5:13:10 PM

**Electropherogram Summary Continued ...**



**Overall Results for sample 9 : sample 34 Resoni 1:6**

Number of peaks found: 30                      Corr. Area 1: 1,208.2  
 Noise: 0.3

**Peak table for sample 9 : sample 34 Resoni 1:6**

Peak	Size [bp]	Conc. [pg/μl]	Molarity [pmol/l]	Observations
1	35	125.00	5,411.3	Lower Marker
2	115	16.88	222.0	
3	124	13.00	158.8	
4	138	17.62	193.6	
5	161	50.40	473.8	
6	185	61.61	505.7	
7	207	59.03	431.9	
8	220	24.03	165.7	
9	229	37.76	250.2	
10	242	38.20	238.9	
11	258	44.60	261.6	
12	267	29.49	167.4	
13	288	56.58	297.7	
14	317	24.72	118.2	
15	351	37.51	162.0	
16	365	31.98	132.6	
17	391	61.92	239.9	
18	402	27.03	101.8	
19	414	25.57	93.7	
20	430	48.06	169.5	
21	452	44.86	150.4	
22	466	37.83	123.1	
23	483	39.24	123.0	
24	508	28.75	85.8	
25	541	50.28	140.9	
26	555	24.13	65.9	

Assay Class: High Sensitivity DNA Assay  
 Data Path: C:\...ents and Settings\Bioanalyzer\2013-04-10\2013-04-10\_004.xad


Created: 4/10/2013 4:15:21 PM  
 Modified: 4/10/2013 5:13:10 PM

**Electropherogram Summary Continued ...**

**... Peak table for sample 9 : sample 34 Resoni 1:6**

Peak	Size [bp]	Conc. [pg/µl]	Molarity [pmol/l]	Observations
27	575	33.78	89.0	
28	595	28.93	73.6	
29	634	25.98	62.1	
30	923	83.06	136.3	
31	1,227	30.14	37.2	
32	10,380	75.00	10.9	Upper Marker

**Region table for sample 9 : sample 34 Resoni 1:6**

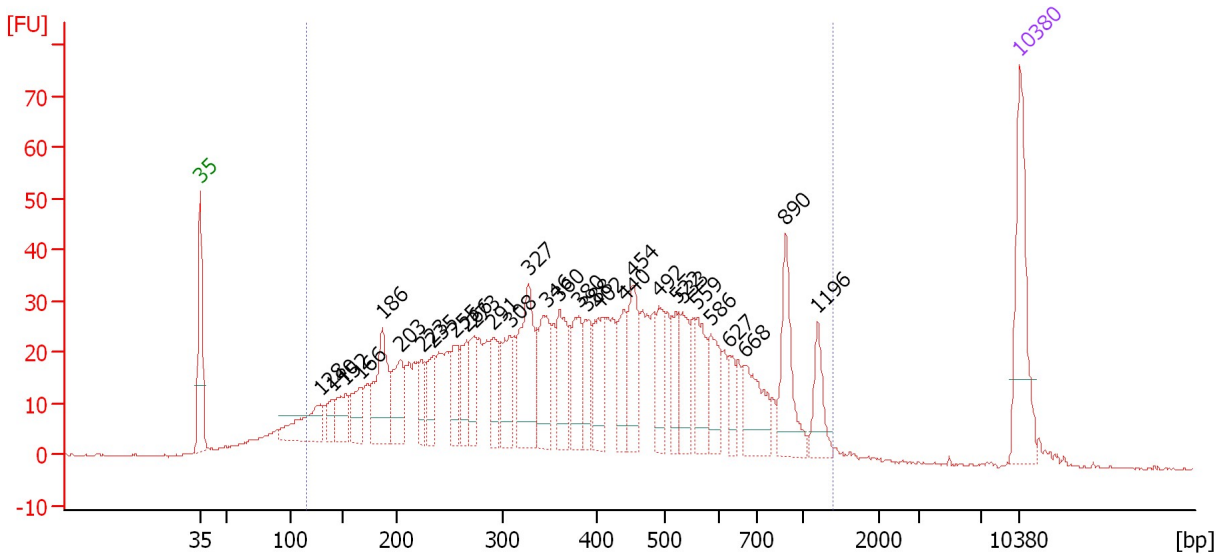
From [bp]	To [bp]	Average Size [bp]	Molarity [pmol/l]	Conc. [pg/µl]	Corr. Area	% of Total	Size distribution in CV [%]	Color
124	1,396	482	7,615.8	1,650.78	1,208.2	94	51.3	

Assay Class: High Sensitivity DNA Assay  
 Data Path: C:\...ents and Settings\Bioanalyzer\2013-04-10\2013-04-10\_004.xad

Created: 4/10/2013 4:15:21 PM  
 Modified: 4/10/2013 5:13:10 PM

**Electropherogram Summary Continued ...**

sample 35 Resoni 1:6 [ 15Cycles ]



**Overall Results for sample 10 : sample 35 Resoni 1:6**

Number of peaks found: 30                      Corr. Area 1: 1,364.2  
 Noise: 0.2

**Peak table for sample 10 : sample 35 Resoni 1:6**

Peak	Size [bp]	Conc. [pg/μl]	Molarity [pmol/l]	Observations
1	35	125.00	5,411.3	Lower Marker
2	128	67.03	790.7	
3	140	19.52	211.4	
4	152	37.56	375.0	
5	166	37.44	342.2	
6	186	89.96	731.8	
7	203	54.93	409.4	
8	223	28.58	193.8	
9	235	33.53	216.6	
10	255	38.57	229.4	
11	266	36.43	207.2	
12	273	35.38	196.4	
13	291	40.68	211.8	
14	308	46.51	228.8	
15	327	105.77	489.9	
16	346	62.60	274.5	
17	360	59.25	249.6	
18	380	49.34	196.9	
19	388	36.65	143.2	
20	402	51.98	196.1	
21	440	45.67	157.2	
22	454	58.22	194.4	
23	492	38.92	119.9	
24	522	34.26	99.5	
25	533	39.44	112.0	
26	559	44.36	120.1	

Assay Class: High Sensitivity DNA Assay  
 Data Path: C:\...ents and Settings\Bioanalyzer\2013-04-10\2013-04-10\_004.xad

Created: 4/10/2013 4:15:21 PM  
 Modified: 4/10/2013 5:13:10 PM

### Electropherogram Summary Continued ...

#### ... Peak table for sample 10 : sample 35 Resoni 1:6

Peak	Size [bp]	Conc. [pg/μl]	Molarity [pmol/l]	Observations
27	586	41.18	106.6	
28	627	18.64	45.1	
29	668	55.56	126.0	
30	890	61.99	105.6	
31	1,196	30.48	38.6	
32	10,380	75.00	10.9	Upper Marker

#### Region table for sample 10 : sample 35 Resoni 1:6

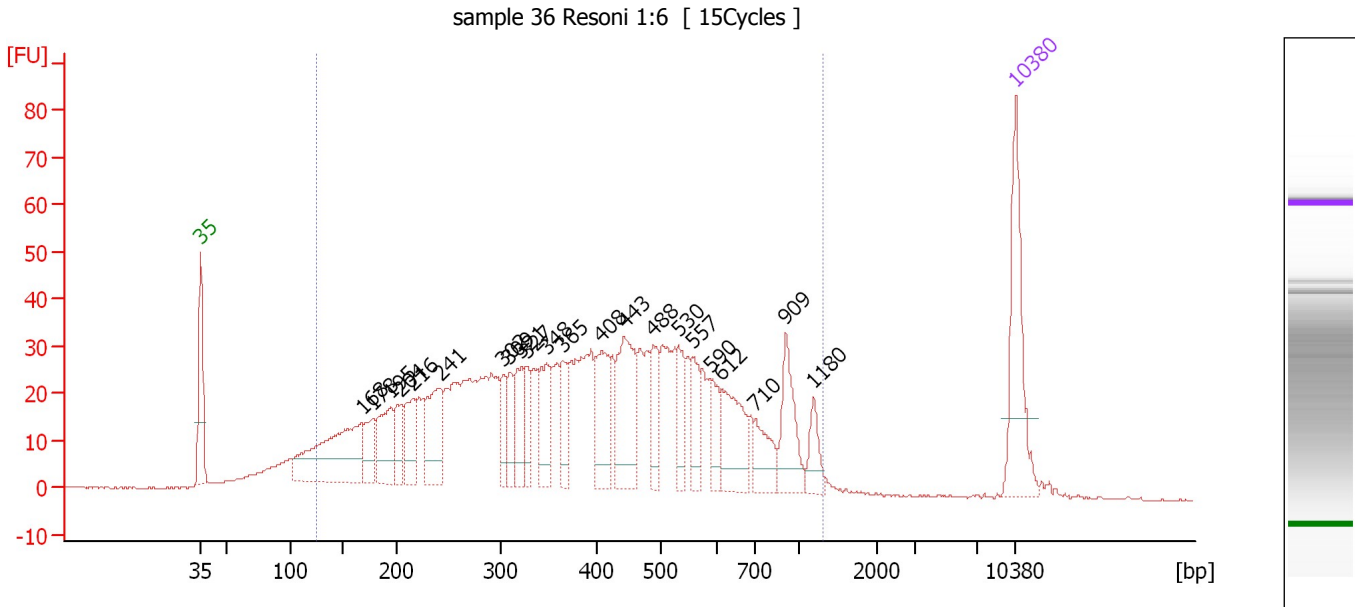
From [bp]	To [bp]	Average Size [bp]	Molarity [pmol/l]	Conc. [pg/μl]	Corr. Area	% of Total	Size distribution in CV [%]	Color
116	1,395	436	10,943.1	2,149.39	1,364.2	93	52.6	



Assay Class: High Sensitivity DNA Assay  
 Data Path: C:\...ents and Settings\Bioanalyzer\2013-04-10\2013-04-10\_004.xad

Created: 4/10/2013 4:15:21 PM  
 Modified: 4/10/2013 5:13:10 PM

**Electropherogram Summary Continued ...**



**Overall Results for sample 11 : sample 36 Resoni 1:6**

Number of peaks found: 22                      Corr. Area 1: 1,346.4  
 Noise: 0.2

**Peak table for sample 11 : sample 36 Resoni 1:6**


Peak	Size [bp]	Conc. [pg/μl]	Molarity [pmol/l]	Observations
1	35	125.00	5,411.3	Lower Marker
2	168	168.30	1,521.0	
3	178	38.07	323.6	
4	195	66.22	513.7	
5	204	33.49	248.2	
6	216	47.40	332.3	
7	241	73.96	464.1	
8	302	29.94	150.2	
9	309	29.98	147.1	
10	321	42.08	198.5	
11	327	30.52	141.5	
12	348	52.04	226.8	
13	365	36.14	150.2	
14	408	62.30	231.2	
15	443	91.37	312.4	
16	488	39.61	123.1	
17	530	32.66	93.4	
18	557	31.08	84.6	
19	590	25.88	66.5	
20	612	61.78	152.8	
21	710	33.99	72.6	
22	909	50.36	84.0	
23	1,180	21.15	27.1	
24	10,380	75.00	10.9	Upper Marker

Assay Class: High Sensitivity DNA Assay  
Data Path: C:\...ents and Settings\Bioanalyzer\2013-04-10\2013-04-10\_004.xad

Created: 4/10/2013 4:15:21 PM  
Modified: 4/10/2013 5:13:10 PM

**Electropherogram Summary Continued ...**

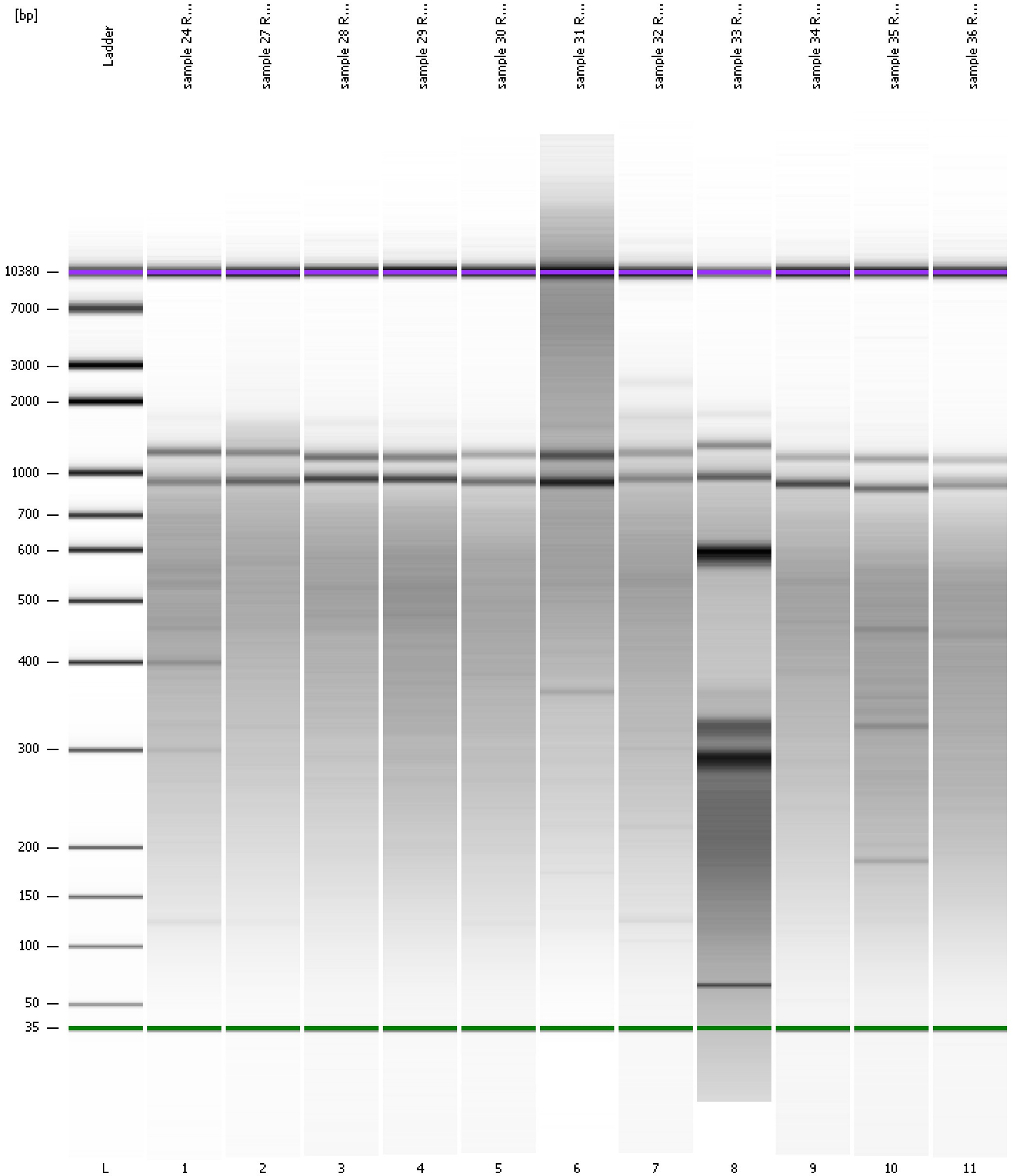
... Region table for sample 11 : sample 36 Resoni 1:6

From [bp]	To [bp]	Average Size [bp]	Molarity [pmol/l]	Conc. [pg/ $\mu$ l]	Corr. Area	% of Total	Size distribution in CV [%]	Color
125	1,293	431	9,315.9	1,873.36	1,346.4	93	49.7	

Assay Class: High Sensitivity DNA Assay  
Data Path: C:\...ents and Settings\Bioanalyzer\2013-04-10\2013-04-10\_004.xad

Created: 4/10/2013 4:15:21 PM  
Modified: 4/10/2013 5:13:10 PM

**Gel Image**



Assay Class: High Sensitivity DNA Assay  
 Data Path: C:\...ents and Settings\Bioanalyzer\2013-04-10\2013-04-10\_004.xad

Created: 4/10/2013 4:15:21 PM  
 Modified: 4/10/2013 5:13:10 PM

**Run Logbook**

Description	Number	Source	Category	Sub Category	Time	Time Zone	User	Host
Run ended on port 1 (Number of wells acquired: 12)		Instrument	Run		4/10/2013 4:56:41 PM	(GMT --07:00) Pacific Standard Time	UC Davis	D8XSMGH1
Run started on port 1 (File: C:\Documents and Settings\Bioanalyzer\2013-04-10\2013-04-10_004.xad)		Instrument	Run		4/10/2013 4:15:27 PM	(GMT --07:00) Pacific Standard Time	UC Davis	D8XSMGH1
Product Number : G2938B		Instrument	Run		4/10/2013 4:15:27 PM	(GMT --07:00) Pacific Standard Time	UC Davis	D8XSMGH1
Name :		Instrument	Run		4/10/2013 4:15:27 PM	(GMT --07:00) Pacific Standard Time	UC Davis	D8XSMGH1
Vendor : Agilent Technologies		Instrument	Run		4/10/2013 4:15:27 PM	(GMT --07:00) Pacific Standard Time	UC Davis	D8XSMGH1
Serial# : DE13701086		Instrument	Run		4/10/2013 4:15:27 PM	(GMT --07:00) Pacific Standard Time	UC Davis	D8XSMGH1
Firmware : C.01.069		Instrument	Run		4/10/2013 4:15:27 PM	(GMT --07:00) Pacific Standard Time	UC Davis	D8XSMGH1
Cartridge : Electrode		Instrument	Run		4/10/2013 4:15:27 PM	(GMT --07:00) Pacific Standard Time	UC Davis	D8XSMGH1