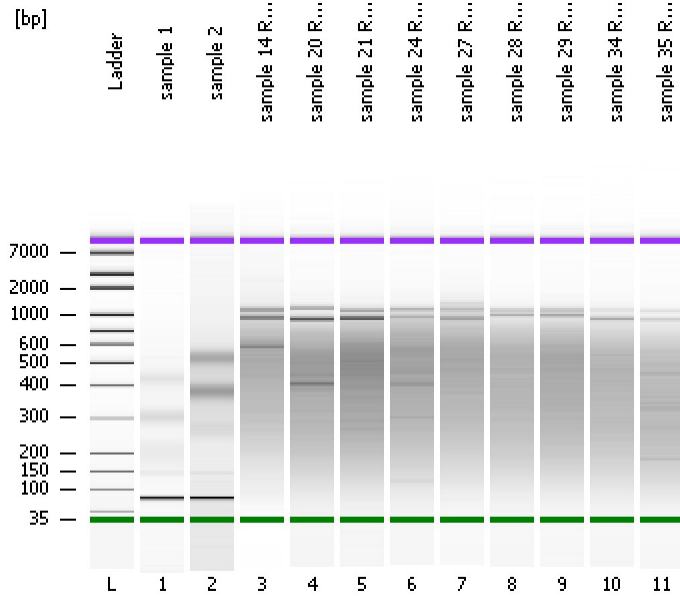


Assay Class: High Sensitivity DNA Assay
Data Path: C:\...ents and Settings\Bioanalyzer\2013-04-12\2013-04-12_002.xad

Created: 4/12/2013 1:37:48 PM
Modified: 4/12/2013 2:20:26 PM

Electrophoresis File Run Summary



Instrument Information:

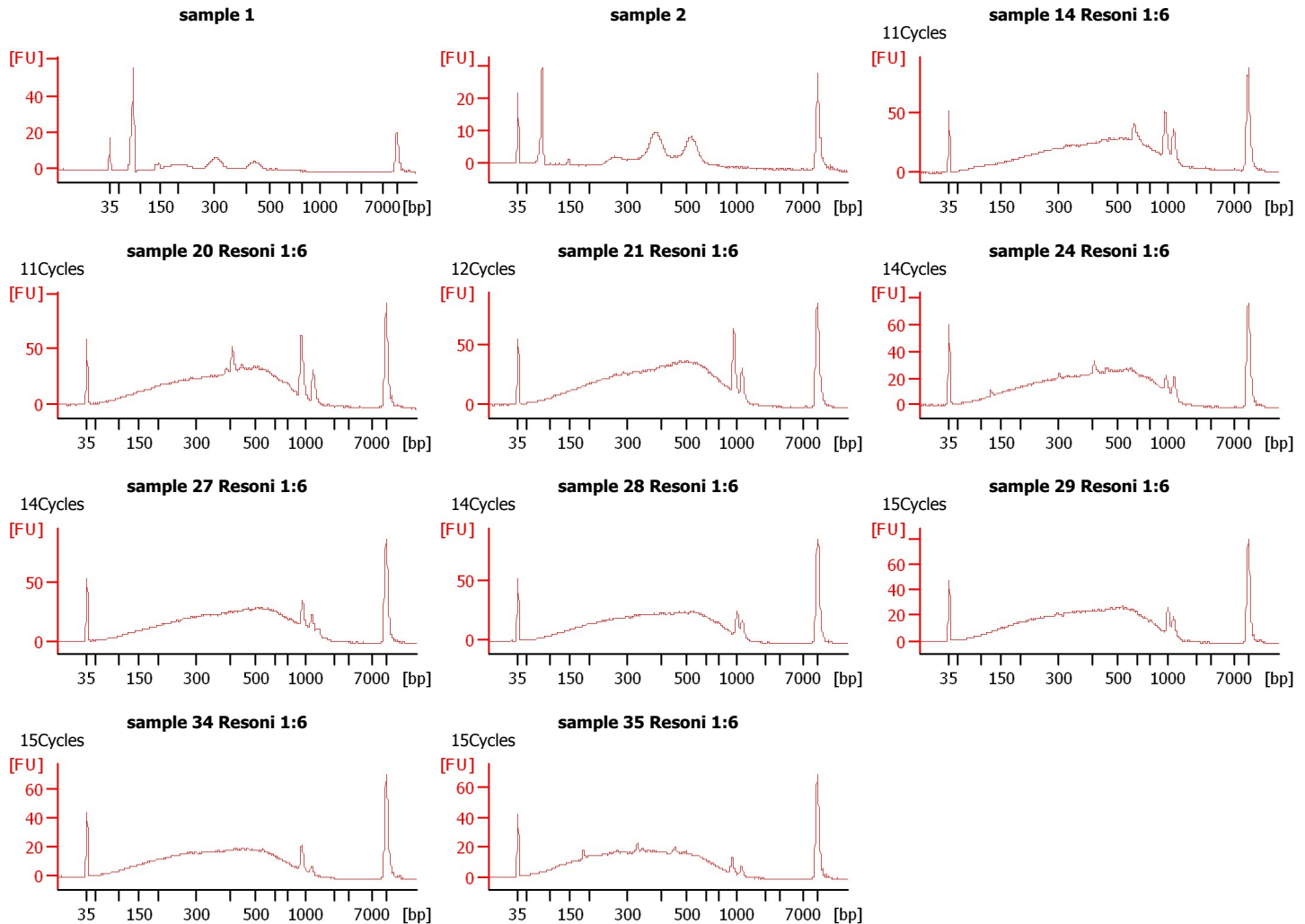
Instrument Name: DE13701086 Firmware: C.01.069
Serial#: DE13701086 Type: G2938B

Assay Information:

Assay Origin Path: C:\Program Files\Agilent\2100 bioanalyzer\2100 expert\assays\dsDNA\High Sensitivity DNA.xsy
Assay Class: High Sensitivity DNA Assay
Version: 1.03
Assay Comments: Copyright © 2003-2010 Agilent Technologies

Chip Information:

Chip Lot #: Reagent Kit Lot #: Chip Comments:



Assay Class: High Sensitivity DNA Assay
Data Path: C:\...ents and Settings\Bioanalyzer\2013-04-12\2013-04-12_002.xad

Created: 4/12/2013 1:37:48 PM
Modified: 4/12/2013 2:20:26 PM

Electrophoresis File Run Summary (Chip Summary)

Sample Name	Sample Comment	Rest. Digest	Status	Observation	Result Label	Result Color
sample 1		<input type="checkbox"/>	✓			
sample 2		<input type="checkbox"/>	✓			
sample 14 Resoni 1:6	11Cycles	<input type="checkbox"/>	✓			
sample 20 Resoni 1:6	11Cycles	<input type="checkbox"/>	✓			
sample 21 Resoni 1:6	12Cycles	<input type="checkbox"/>	✓			
sample 24 Resoni 1:6	14Cycles	<input type="checkbox"/>	✓			
sample 27 Resoni 1:6	14Cycles	<input type="checkbox"/>	✓			
sample 28 Resoni 1:6	14Cycles	<input type="checkbox"/>	✓			
sample 29 Resoni 1:6	15Cycles	<input type="checkbox"/>	✓			
sample 34 Resoni 1:6	15Cycles	<input type="checkbox"/>	✓			
sample 35 Resoni 1:6	15Cycles	<input type="checkbox"/>	✓			
Ladder		<input type="checkbox"/>	✓			

Chip Lot #

Reagent Kit Lot #

Chip Comments :

Assay Class: High Sensitivity DNA Assay
Data Path: C:\...ents and Settings\Bioanalyzer\2013-04-12\2013-04-12_002.xad

Created: 4/12/2013 1:37:48 PM
Modified: 4/12/2013 2:20:26 PM

Electrophoresis Assay Details

General Analysis Settings

Number of Available Sample and Ladder Wells (Max.) : 12
Minimum Visible Range [s] : 32
Maximum Visible Range [s] : 138
Start Analysis Time Range [s] : 33
End Analysis Time Range [s] : 137.5
Ladder Concentration [pg/μl] : 1950
Uses Standard Area for Ladder Fragments
Lower Marker Concentration [pg/μl] : 125
Upper Marker Concentration [pg/μl] : 75
Used Upper Marker for Quantitation
Standard Curve Fit is Point to Point
Show Data Aligned to Lower and Upper Marker

Integrator Settings

Integration Start Time [s] : 33.05
Integration End Time [s] : 137
Slope Threshold : 0.8
Height Threshold [FU] : 5
Area Threshold : 0.1
Width Threshold [s] : 0.6
Baseline Plateau [s] : 0.5

Filter Settings

Filter Width [s] : 0.5
Polynomial Order : 4

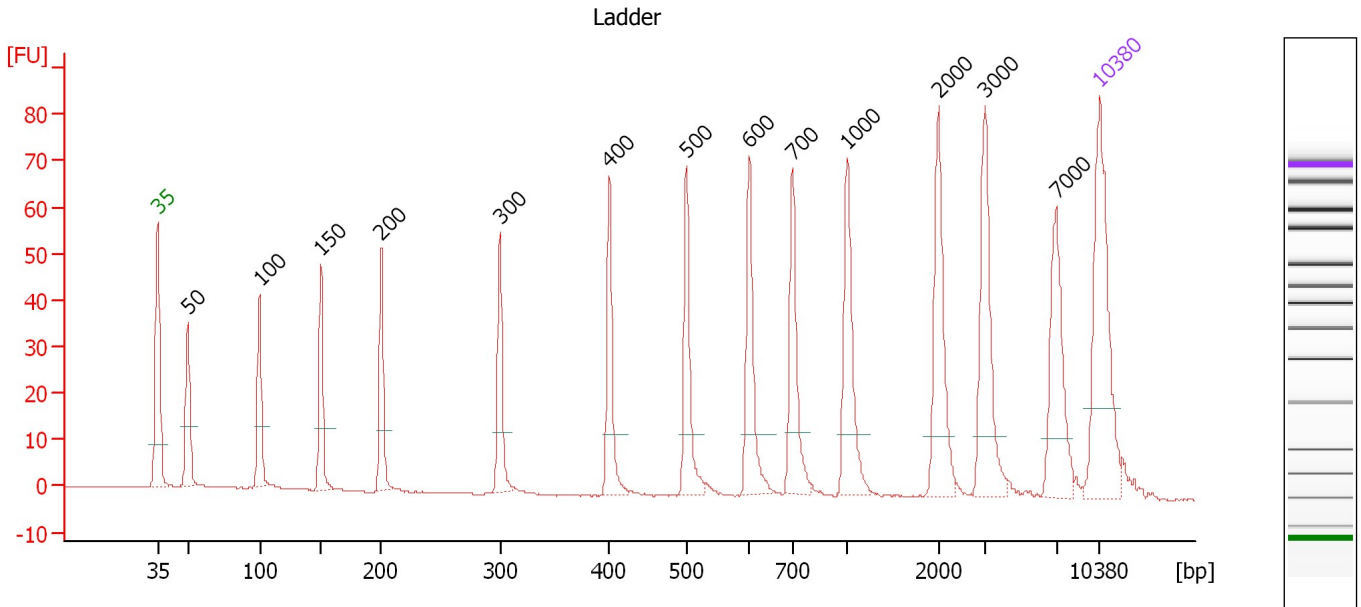
Ladder

Ladder Peak	Size	Area
1	35	160
2	50	210
3	100	208
4	150	221
5	200	242
6	300	270
7	400	305
8	500	306
9	600	336
10	700	321
11	1000	366
12	2000	413
13	3000	411
14	7000	400
15	10380	214

Assay Class: High Sensitivity DNA Assay
 Data Path: C:\...ents and Settings\Bioanalyzer\2013-04-12\2013-04-12_002.xad

Created: 4/12/2013 1:37:48 PM
 Modified: 4/12/2013 2:20:26 PM

Electropherogram Summary



Overall Results for Ladder

Noise: 0.1

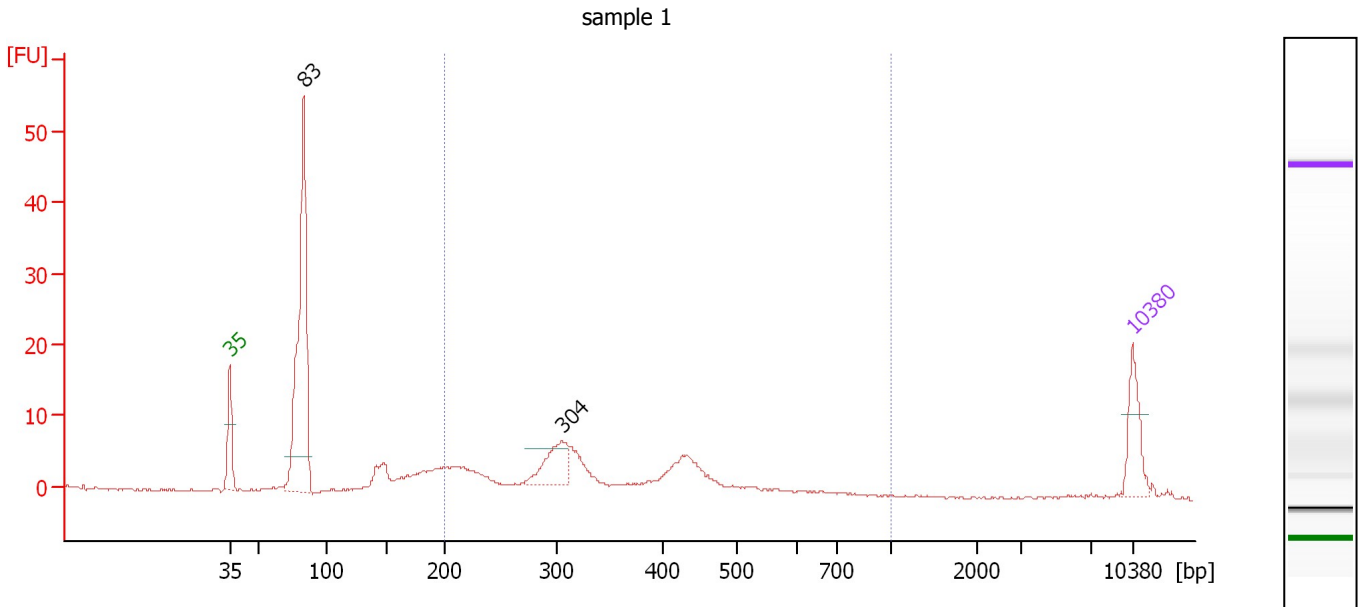
Peak table for Ladder

Peak	Size [bp]	Conc. [pg/μl]	Molarity [pmol/l]	Observations
1	35	125.00	5,411.3	Lower Marker
2	50	150.00	4,545.5	Ladder Peak
3	100	150.00	2,272.7	Ladder Peak
4	150	150.00	1,515.2	Ladder Peak
5	200	150.00	1,136.4	Ladder Peak
6	300	150.00	757.6	Ladder Peak
7	400	150.00	568.2	Ladder Peak
8	500	150.00	454.5	Ladder Peak
9	600	150.00	378.8	Ladder Peak
10	700	150.00	324.7	Ladder Peak
11	1,000	150.00	227.3	Ladder Peak
12	2,000	150.00	113.6	Ladder Peak
13	3,000	150.00	75.8	Ladder Peak
14	7,000	150.00	32.5	Ladder Peak
15	10,380	75.00	10.9	Upper Marker

Assay Class: High Sensitivity DNA Assay
 Data Path: C:\...ents and Settings\Bioanalyzer\2013-04-12\2013-04-12_002.xad

Created: 4/12/2013 1:37:48 PM
 Modified: 4/12/2013 2:20:26 PM

Electropherogram Summary Continued ...



Overall Results for sample 1 : sample 1

Number of peaks found: 2 Corr. Area 1: 97.2
 Noise: 0.2

Peak table for sample 1 : sample 1

Peak	Size [bp]	Conc. [pg/μl]	Molarity [pmol/l]	Observations
1	35	125.00	5,411.3	Lower Marker
2	83	701.44	12,831.8	
3	304	119.21	593.7	
4	10,380	75.00	10.9	Upper Marker

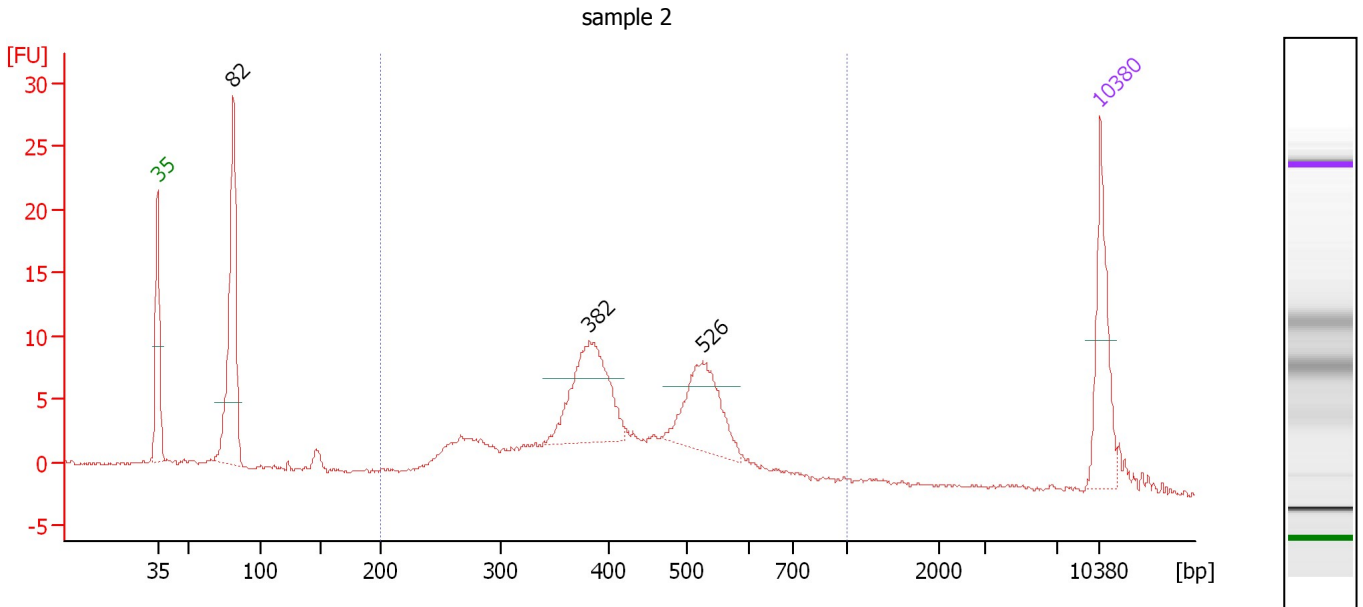
Region table for sample 1 : sample 1

From [bp]	To [bp]	Average Size [bp]	Molarity [pmol/l]	Conc. [pg/μl]	Corr. Area	% of Total	Size distribution in CV [%]	Color
200	1,000	345	2,861.8	588.71	97.2	46	28.0	Blue

Assay Class: High Sensitivity DNA Assay
 Data Path: C:\...ents and Settings\Bioanalyzer\2013-04-12\2013-04-12_002.xad

Created: 4/12/2013 1:37:48 PM
 Modified: 4/12/2013 2:20:26 PM

Electropherogram Summary Continued ...



Overall Results for sample 2 : sample 2

Number of peaks found: 3 Corr. Area 1: 161.3
 Noise: 0.1

Peak table for sample 2 : sample 2

Peak	Size [bp]	Conc. [pg/μl]	Molarity [pmol/l]	Observations
1	35	125.00	5,411.3	Lower Marker
2	82	249.73	4,631.6	
3	382	156.69	621.1	
4	526	112.86	325.4	
5	10,380	75.00	10.9	Upper Marker

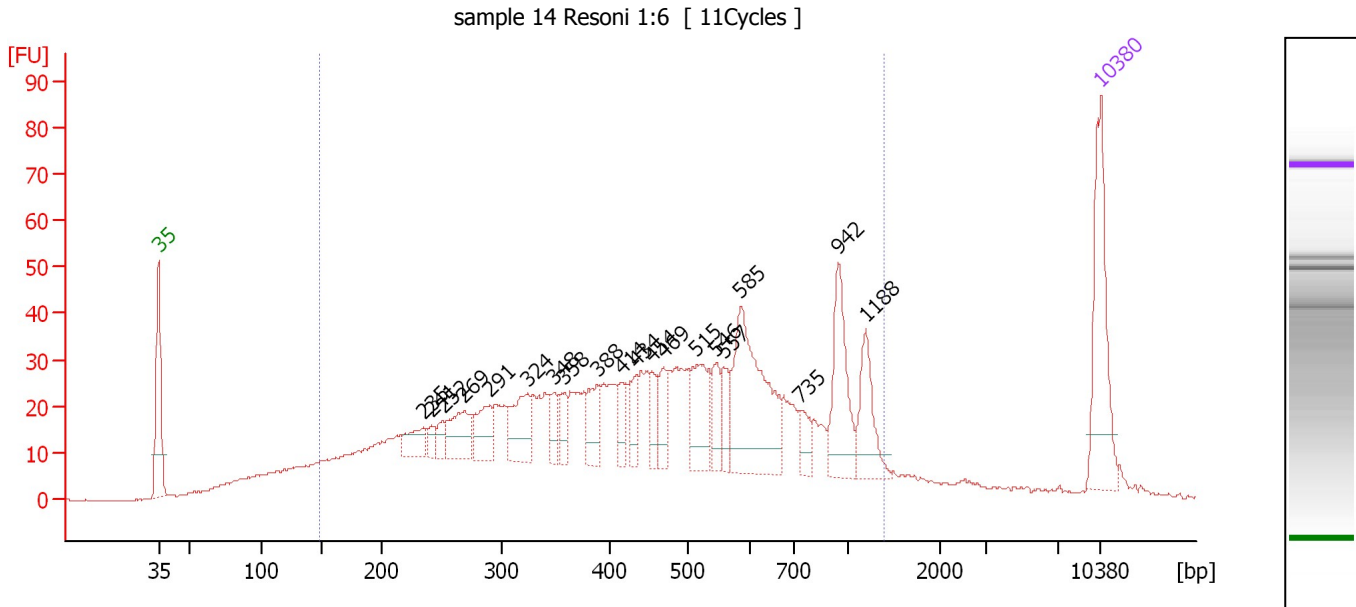
Region table for sample 2 : sample 2

From [bp]	To [bp]	Average Size [bp]	Molarity [pmol/l]	Conc. [pg/μl]	Corr. Area	% of Total	Size distribution in CV [%]	Color
200	1,000	435	2,809.5	726.67	161.3	71	27.2	Blue

Assay Class: High Sensitivity DNA Assay
 Data Path: C:\...ents and Settings\Bioanalyzer\2013-04-12\2013-04-12_002.xad

Created: 4/12/2013 1:37:48 PM
 Modified: 4/12/2013 2:20:26 PM

Electropherogram Summary Continued ...



Overall Results for sample 3 : sample 14 Resoni 1:6

Number of peaks found: 20 Corr. Area 1: 1,204.5
 Noise: 0.1

Peak table for sample 3 : sample 14 Resoni 1:6

Peak	Size [bp]	Conc. [pg/µl]	Molarity [pmol/l]	Observations
1	35	125.00	5,411.3	Lower Marker
2	235	27.77	179.1	
3	241	10.27	64.5	
4	252	14.11	84.9	
5	269	43.51	245.1	
6	291	36.66	190.7	
7	324	48.93	228.6	
8	348	19.21	83.5	
9	358	18.86	79.7	
10	388	33.13	129.3	
11	414	18.87	69.0	
12	434	19.67	68.7	
13	454	20.70	69.1	
14	469	24.38	78.7	
15	515	53.89	158.6	
16	546	25.22	70.1	
17	557	19.80	53.9	
18	585	133.09	344.8	
19	735	17.61	36.3	
20	942	66.46	106.9	
21	1,188	43.13	55.0	
22	10,380	75.00	10.9	Upper Marker

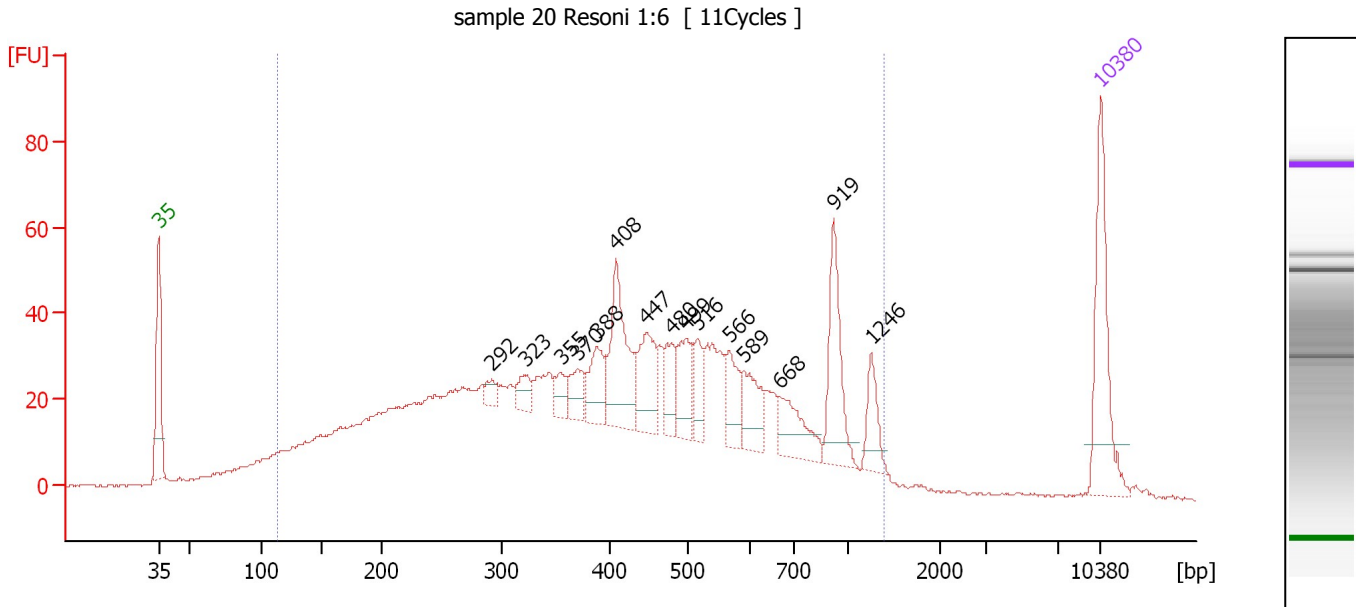
Region table for sample 3 : sample 14 Resoni 1:6

From [bp]	To [bp]	Average Size [bp]	Molarity [pmol/l]	Conc. [pg/µl]	Corr. Area	% of Total	Size distribution in CV [%]	Color
148	1,398	508	7,180.8	1,684.68	1,204.5	89	51.2	Blue

Assay Class: High Sensitivity DNA Assay
 Data Path: C:\...ents and Settings\Bioanalyzer\2013-04-12\2013-04-12_002.xad

Created: 4/12/2013 1:37:48 PM
 Modified: 4/12/2013 2:20:26 PM

Electropherogram Summary Continued ...



Overall Results for sample 4 : sample 20 Resoni 1:6

Number of peaks found: 15 Corr. Area 1: 1,487.2
 Noise: 0.3

Peak table for sample 4 : sample 20 Resoni 1:6

Peak	Size [bp]	Conc. [pg/µl]	Molarity [pmol/l]	Observations
1	35	125.00	5,411.3	Lower Marker
2	292	11.75	60.9	
3	323	19.16	90.0	
4	355	17.50	74.7	
5	370	24.65	101.0	
6	388	38.04	148.6	
7	408	92.61	344.2	
8	447	53.99	182.9	
9	480	28.71	90.6	
10	499	41.62	126.5	
11	516	28.11	82.5	
12	566	35.07	93.8	
13	589	39.39	101.3	
14	668	44.15	100.2	
15	919	67.61	111.4	
16	1,246	26.59	32.3	
17	10,380	75.00	10.9	Upper Marker

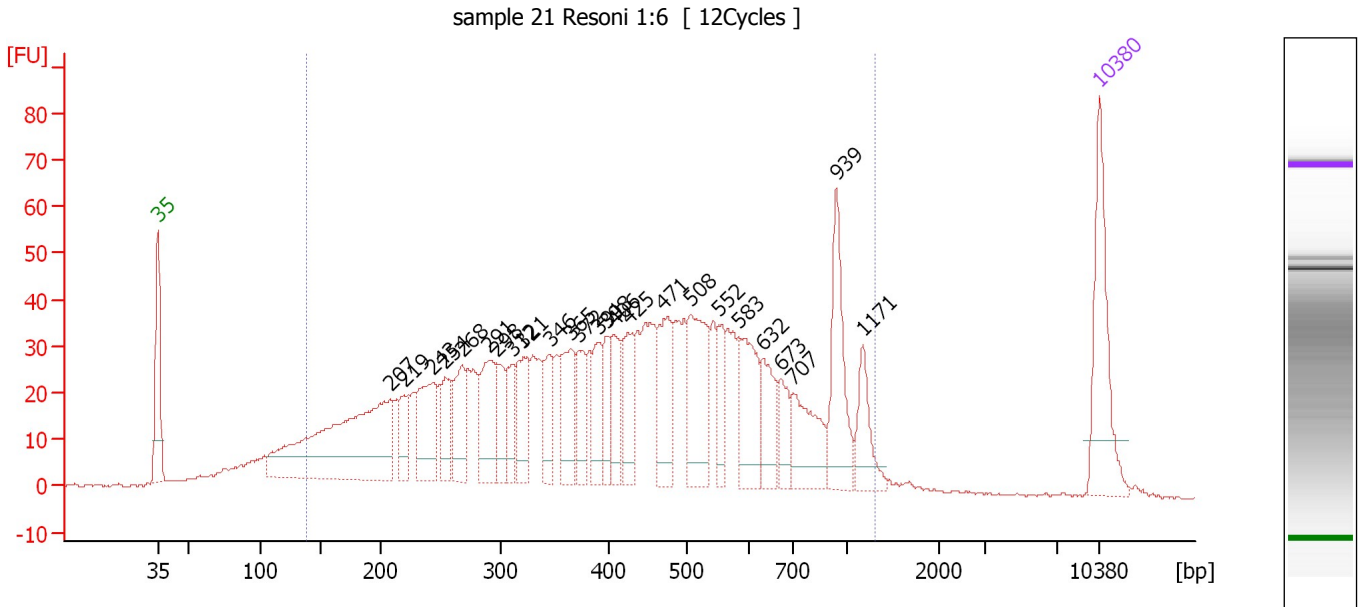
Region table for sample 4 : sample 20 Resoni 1:6

From [bp]	To [bp]	Average Size [bp]	Molarity [pmol/l]	Conc. [pg/µl]	Corr. Area	% of Total	Size distribution in CV [%]	Color
113	1,393	464	10,036.5	2,065.19	1,487.2	95	53.1	Blue

Assay Class: High Sensitivity DNA Assay
 Data Path: C:\...ents and Settings\Bioanalyzer\2013-04-12\2013-04-12_002.xad

Created: 4/12/2013 1:37:48 PM
 Modified: 4/12/2013 2:20:26 PM

Electropherogram Summary Continued ...



Overall Results for sample 5 : sample 21 Resoni 1:6

Number of peaks found: 25 Corr. Area 1: 1,510.5
 Noise: 0.3

Peak table for sample 5 : sample 21 Resoni 1:6

Peak	Size [bp]	Conc. [pg/μl]	Molarity [pmol/l]	Observations
1	35	125.00	5,411.3	Lower Marker
2	207	281.09	2,052.7	
3	219	33.65	232.5	
4	243	76.61	476.8	
5	254	37.17	221.6	
6	268	51.90	293.3	
7	291	71.16	370.9	
8	298	36.04	183.1	
9	312	32.41	157.3	
10	321	54.17	255.4	
11	346	39.92	174.9	
12	365	57.14	237.2	
13	372	39.28	160.0	
14	391	42.06	162.9	
15	398	33.18	126.3	
16	406	38.41	143.2	
17	425	46.09	164.5	
18	471	65.01	209.2	
19	508	95.33	284.5	
20	552	31.05	85.2	
21	583	68.74	178.5	
22	632	44.63	107.0	
23	673	27.14	61.1	
24	707	60.37	129.4	
25	939	75.69	122.1	
26	1,171	36.61	47.4	

Assay Class: High Sensitivity DNA Assay
Data Path: C:\...ents and Settings\Bioanalyzer\2013-04-12\2013-04-12_002.xad

Created: 4/12/2013 1:37:48 PM
Modified: 4/12/2013 2:20:26 PM

Electropherogram Summary Continued ...**... Peak table for sample 5 : sample 21 Resoni 1:6**

Peak	Size [bp]	Conc. [pg/ μ l]	Molarity [pmol/l]	Observations
27	10,380	75.00	10.9	Upper Marker

Region table for sample 5 : sample 21 Resoni 1:6

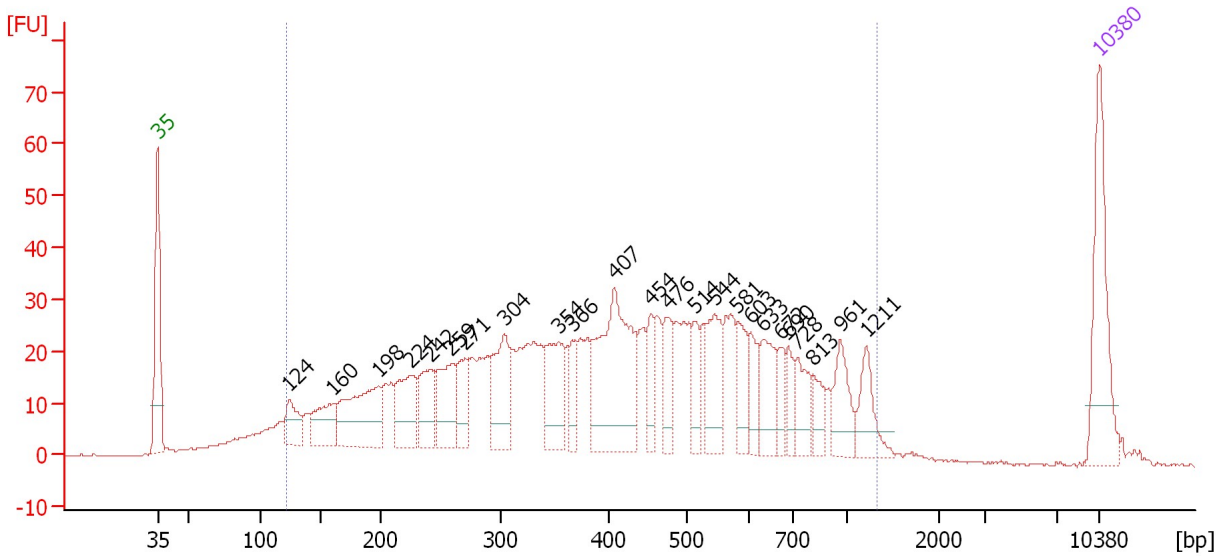
From [bp]	To [bp]	Average Size [bp]	Molarity [pmol/l]	Conc. [pg/ μ l]	Corr. Area	% of Total	Size distribution in CV [%]	Color
137	1,308	466	9,464.0	2,058.75	1,510.5	92	49.9	

Assay Class: High Sensitivity DNA Assay
 Data Path: C:\...ents and Settings\Bioanalyzer\2013-04-12\2013-04-12_002.xad

Created: 4/12/2013 1:37:48 PM
 Modified: 4/12/2013 2:20:26 PM

Electropherogram Summary Continued ...

sample 24 Resoni 1:6 [14Cycles]



Overall Results for sample 6 : sample 24 Resoni 1:6

Number of peaks found: 24 Corr. Area 1: 1,188.0
 Noise: 0.2

Peak table for sample 6 : sample 24 Resoni 1:6

Peak	Size [bp]	Conc. [pg/μl]	Molarity [pmol/l]	Observations
1	35	125.00	5,411.3	Lower Marker
2	124	36.94	450.7	
3	160	50.08	473.6	
4	198	102.59	785.8	
5	224	60.57	408.9	
6	242	48.79	305.6	
7	259	61.84	362.0	
8	271	37.93	212.2	
9	304	70.51	351.7	
10	354	64.48	276.1	
11	366	26.77	110.8	
12	407	154.68	575.3	
13	454	31.53	105.2	
14	476	37.72	120.1	
15	514	26.93	79.4	
16	544	53.32	148.4	
17	581	31.29	81.6	
18	603	24.69	62.1	
19	633	43.87	105.1	
20	672	19.67	44.4	
21	690	18.80	41.3	
22	728	30.69	63.8	
23	813	18.85	35.1	
24	961	35.55	56.1	
25	1,211	31.56	39.5	
26	10,380	75.00	10.9	Upper Marker

Assay Class: High Sensitivity DNA Assay
Data Path: C:\...ents and Settings\Bioanalyzer\2013-04-12\2013-04-12_002.xad

Created: 4/12/2013 1:37:48 PM
Modified: 4/12/2013 2:20:26 PM

Electropherogram Summary Continued ...

... Region table for sample 6 : sample 24 Resoni 1:6

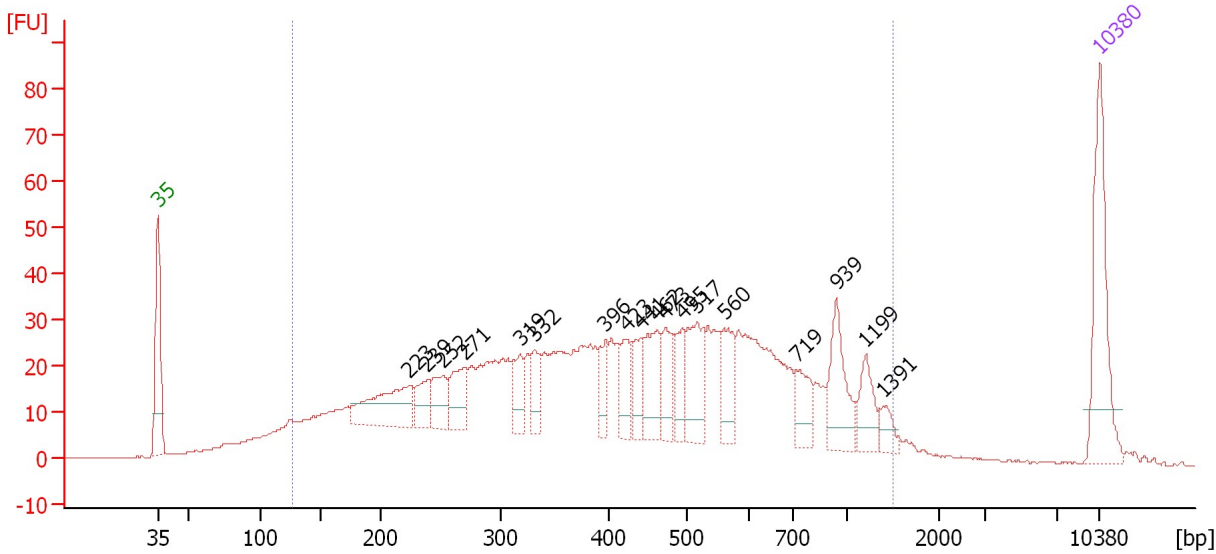
From [bp]	To [bp]	Average Size [bp]	Molarity [pmol/l]	Conc. [pg/μl]	Corr. Area	% of Total	Size distribution in CV [%]	Color
121	1,313	458	8,774.6	1,826.44	1,188.0	93	50.4	■

Assay Class: High Sensitivity DNA Assay
 Data Path: C:\...ents and Settings\Bioanalyzer\2013-04-12\2013-04-12_002.xad

Created: 4/12/2013 1:37:48 PM
 Modified: 4/12/2013 2:20:26 PM

Electropherogram Summary Continued ...

sample 27 Resoni 1:6 [14Cycles]



Overall Results for sample 7 : sample 27 Resoni 1:6

Number of peaks found: 18 Corr. Area 1: 1,238.4
 Noise: 0.2

Peak table for sample 7 : sample 27 Resoni 1:6

Peak	Size [bp]	Conc. [pg/μl]	Molarity [pmol/l]	Observations
1	35	125.00	5,411.3	Lower Marker
2	223	80.97	550.7	
3	239	28.90	183.4	
4	252	34.08	204.5	
5	271	43.03	241.0	
6	319	27.83	132.4	
7	332	27.62	126.2	
8	396	21.94	83.8	
9	423	31.09	111.4	
10	441	29.62	101.9	
11	462	47.48	155.8	
12	473	35.41	113.5	
13	495	25.83	79.1	
14	517	54.34	159.2	
15	560	37.77	102.1	
16	719	30.36	63.9	
17	939	48.29	77.9	
18	1,199	26.91	34.0	
19	1,391	11.90	13.0	
20	10,380	75.00	10.9	Upper Marker

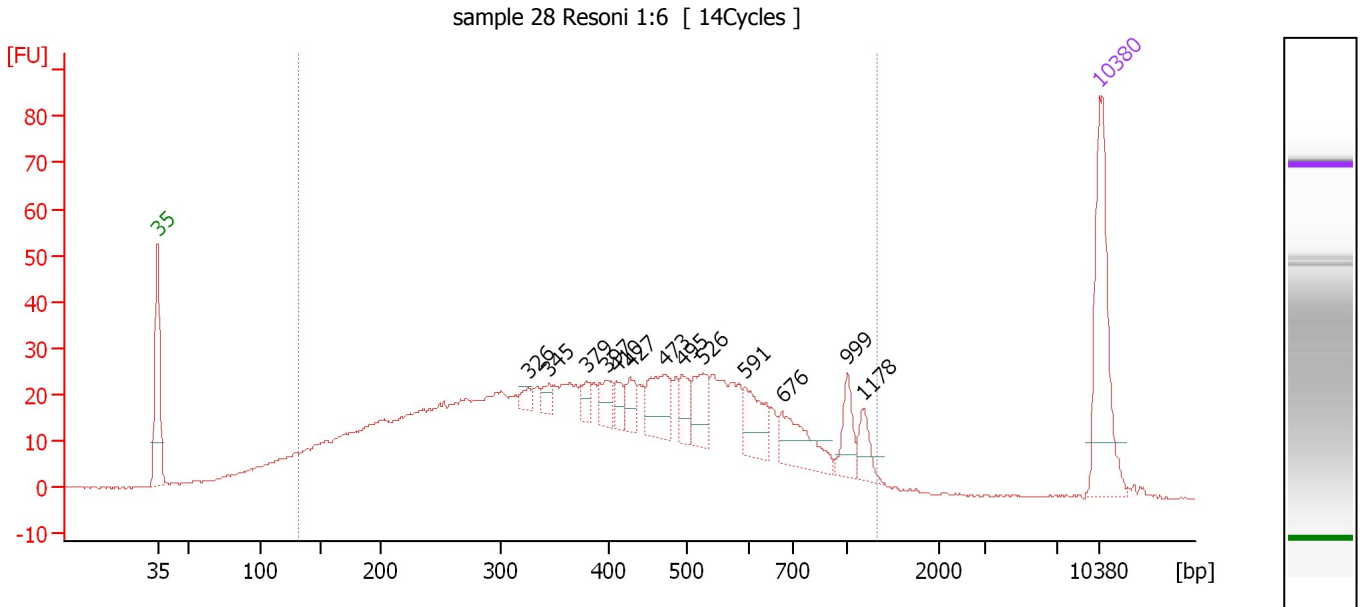
Region table for sample 7 : sample 27 Resoni 1:6

From [bp]	To [bp]	Average Size [bp]	Molarity [pmol/l]	Conc. [pg/μl]	Corr. Area	% of Total	Size distribution in CV [%]	Color
127	1,499	485	7,893.2	1,704.91	1,238.4	92	54.3	Blue

Assay Class: High Sensitivity DNA Assay
 Data Path: C:\...ents and Settings\Bioanalyzer\2013-04-12\2013-04-12_002.xad

Created: 4/12/2013 1:37:48 PM
 Modified: 4/12/2013 2:20:26 PM

Electropherogram Summary Continued ...



Overall Results for sample 8 : sample 28 Resoni 1:6

Number of peaks found: 13 Corr. Area 1: 1,098.3
 Noise: 0.2

Peak table for sample 8 : sample 28 Resoni 1:6

Peak	Size [bp]	Conc. [pg/μl]	Molarity [pmol/l]	Observations
1	35	125.00	5,411.3	Lower Marker
2	326	8.17	38.0	
3	345	9.78	43.0	
4	379	11.26	45.0	
5	397	16.99	64.9	
6	410	11.89	43.9	
7	427	15.19	53.9	
8	473	39.59	126.9	
9	495	19.95	61.1	
10	526	29.10	83.8	
11	591	33.45	85.7	
12	676	40.65	91.2	
13	999	22.50	34.1	
14	1,178	15.54	20.0	
15	10,380	75.00	10.9	Upper Marker

Region table for sample 8 : sample 28 Resoni 1:6

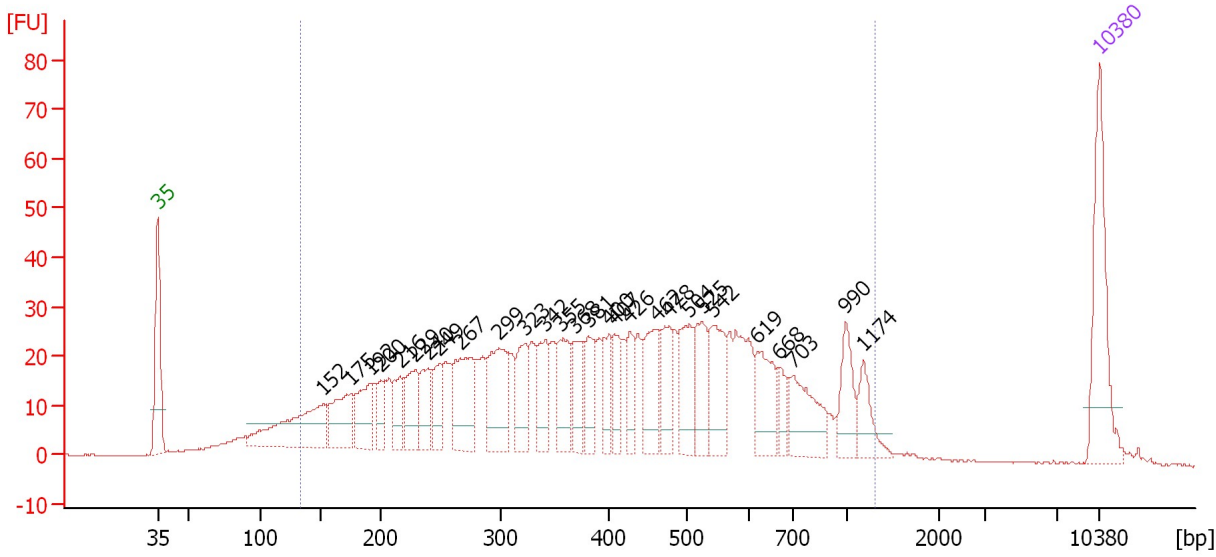
From [bp]	To [bp]	Average Size [bp]	Molarity [pmol/l]	Conc. [pg/μl]	Corr. Area	% of Total	Size distribution in CV [%]	Color
132	1,323	445	7,087.1	1,471.52	1,098.3	93	50.6	Blue

Assay Class: High Sensitivity DNA Assay
 Data Path: C:\...ents and Settings\Bioanalyzer\2013-04-12\2013-04-12_002.xad

Created: 4/12/2013 1:37:48 PM
 Modified: 4/12/2013 2:20:26 PM

Electropherogram Summary Continued ...

sample 29 Resoni 1:6 [15Cycles]



Overall Results for sample 9 : sample 29 Resoni 1:6

Number of peaks found: 28 Corr. Area 1: 1,157.3
 Noise: 0.2

Peak table for sample 9 : sample 29 Resoni 1:6

Peak	Size [bp]	Conc. [pg/μl]	Molarity [pmol/l]	Observations
1	35	125.00	5,411.3	Lower Marker
2	152	116.52	1,162.8	
3	175	57.64	498.1	
4	192	49.08	387.8	
5	200	26.71	202.5	
6	216	28.91	202.8	
7	229	47.73	316.2	
8	240	41.89	264.7	
9	249	31.82	193.4	
10	267	77.57	440.2	
11	299	73.81	373.9	
12	323	46.86	219.8	
13	342	42.36	187.8	
14	355	51.30	219.0	
15	368	38.38	158.0	
16	381	38.16	151.9	
17	400	28.54	108.1	
18	407	28.58	106.5	
19	426	28.38	100.9	
20	462	56.68	185.9	
21	478	42.62	135.0	
22	504	53.06	159.7	
23	525	47.78	137.8	
24	542	53.60	149.8	
25	619	47.07	115.2	
26	668	17.91	40.6	

Assay Class: High Sensitivity DNA Assay
 Data Path: C:\...ents and Settings\Bioanalyzer\2013-04-12\2013-04-12_002.xad


Created: 4/12/2013 1:37:48 PM
 Modified: 4/12/2013 2:20:26 PM

Electropherogram Summary Continued ...

... Peak table for sample 9 : sample 29 Resoni 1:6

Peak	Size [bp]	Conc. [pg/μl]	Molarity [pmol/l]	Observations
27	703	56.65	122.0	
28	990	35.16	53.8	
29	1,174	27.78	35.9	
30	10,380	75.00	10.9	Upper Marker

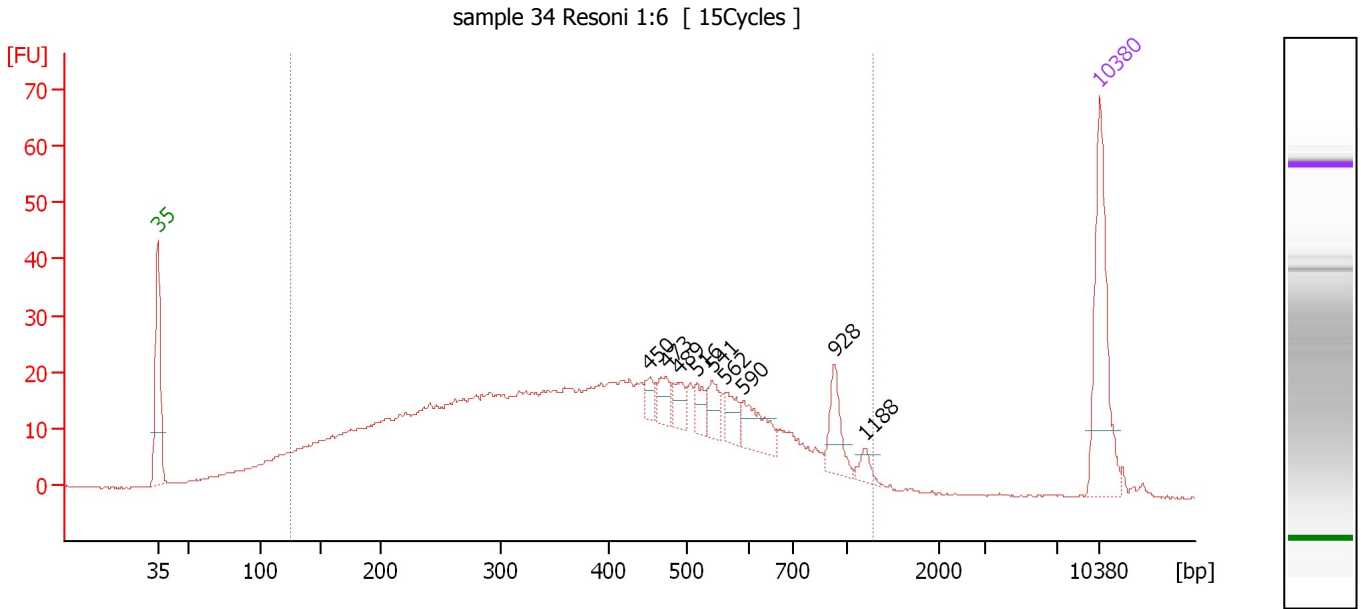
Region table for sample 9 : sample 29 Resoni 1:6

From [bp]	To [bp]	Average Size [bp]	Molarity [pmol/l]	Conc. [pg/μl]	Corr. Area	% of Total	Size distribution in CV [%]	Color
134	1,295	449	8,568.2	1,797.40	1,157.3	92	50.3	

Assay Class: High Sensitivity DNA Assay
 Data Path: C:\...ents and Settings\Bioanalyzer\2013-04-12\2013-04-12_002.xad

Created: 4/12/2013 1:37:48 PM
 Modified: 4/12/2013 2:20:26 PM

Electropherogram Summary Continued ...



Overall Results for sample 10 : sample 34 Resoni 1:6

Number of peaks found: 9 Corr. Area 1: 847.5
 Noise: 0.2

Peak table for sample 10 : sample 34 Resoni 1:6

Peak	Size [bp]	Conc. [pg/μl]	Molarity [pmol/l]	Observations
1	35	125.00	5,411.3	Lower Marker
2	450	12.07	40.6	
3	473	17.20	55.0	
4	489	15.68	48.6	
5	516	14.50	42.6	
6	541	19.42	54.4	
7	562	17.77	47.9	
8	590	30.58	78.6	
9	928	27.54	45.0	
10	1,188	8.30	10.6	
11	10,380	75.00	10.9	Upper Marker

Region table for sample 10 : sample 34 Resoni 1:6

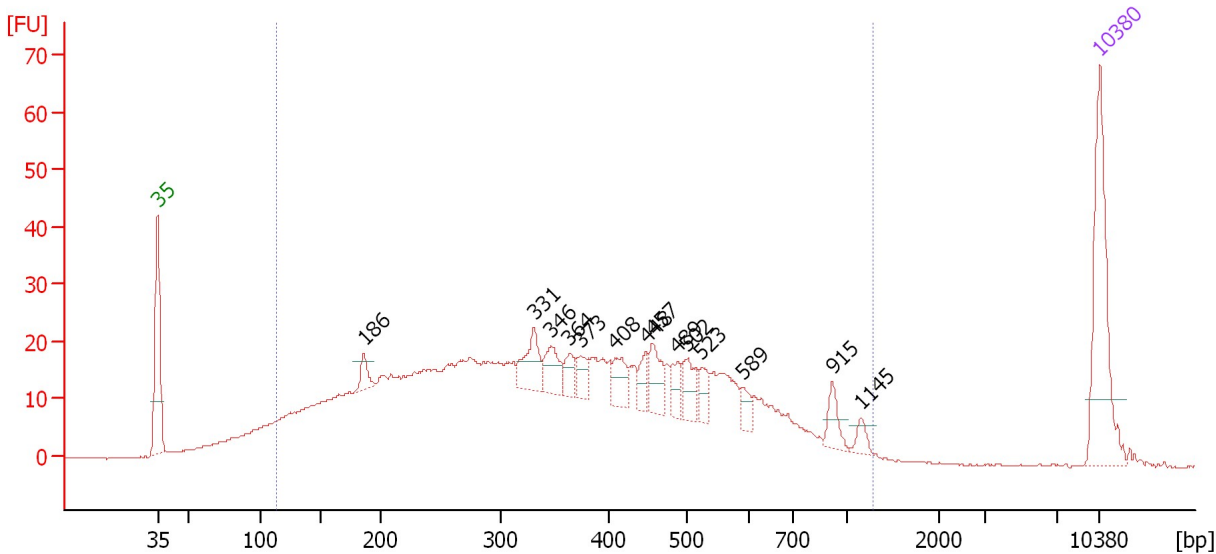
From [bp]	To [bp]	Average Size [bp]	Molarity [pmol/l]	Conc. [pg/μl]	Corr. Area	% of Total	Size distribution in CV [%]	Color
126	1,273	424	7,641.7	1,527.80	847.5	93	48.8	Blue

Assay Class: High Sensitivity DNA Assay
 Data Path: C:\...ents and Settings\Bioanalyzer\2013-04-12\2013-04-12_002.xad

Created: 4/12/2013 1:37:48 PM
 Modified: 4/12/2013 2:20:26 PM

Electropherogram Summary Continued ...

sample 35 Resoni 1:6 [15Cycles]



Overall Results for sample 11 : sample 35 Resoni 1:6

Number of peaks found: 14 Corr. Area 1: 847.1
 Noise: 0.2

Peak table for sample 11 : sample 35 Resoni 1:6

Peak	Size [bp]	Conc. [pg/μl]	Molarity [pmol/l]	Observations
1	35	125.00	5,411.3	Lower Marker
2	186	14.12	115.1	
3	331	30.48	139.5	
4	346	23.35	102.1	
5	364	14.59	60.8	
6	373	13.48	54.7	
7	408	20.28	75.3	
8	448	13.47	45.6	
9	457	25.56	84.8	
10	489	14.51	45.0	
11	502	20.50	61.9	
12	523	12.89	37.3	
13	589	9.23	23.7	
14	915	14.07	23.3	
15	1,145	7.40	9.8	
16	10,380	75.00	10.9	Upper Marker

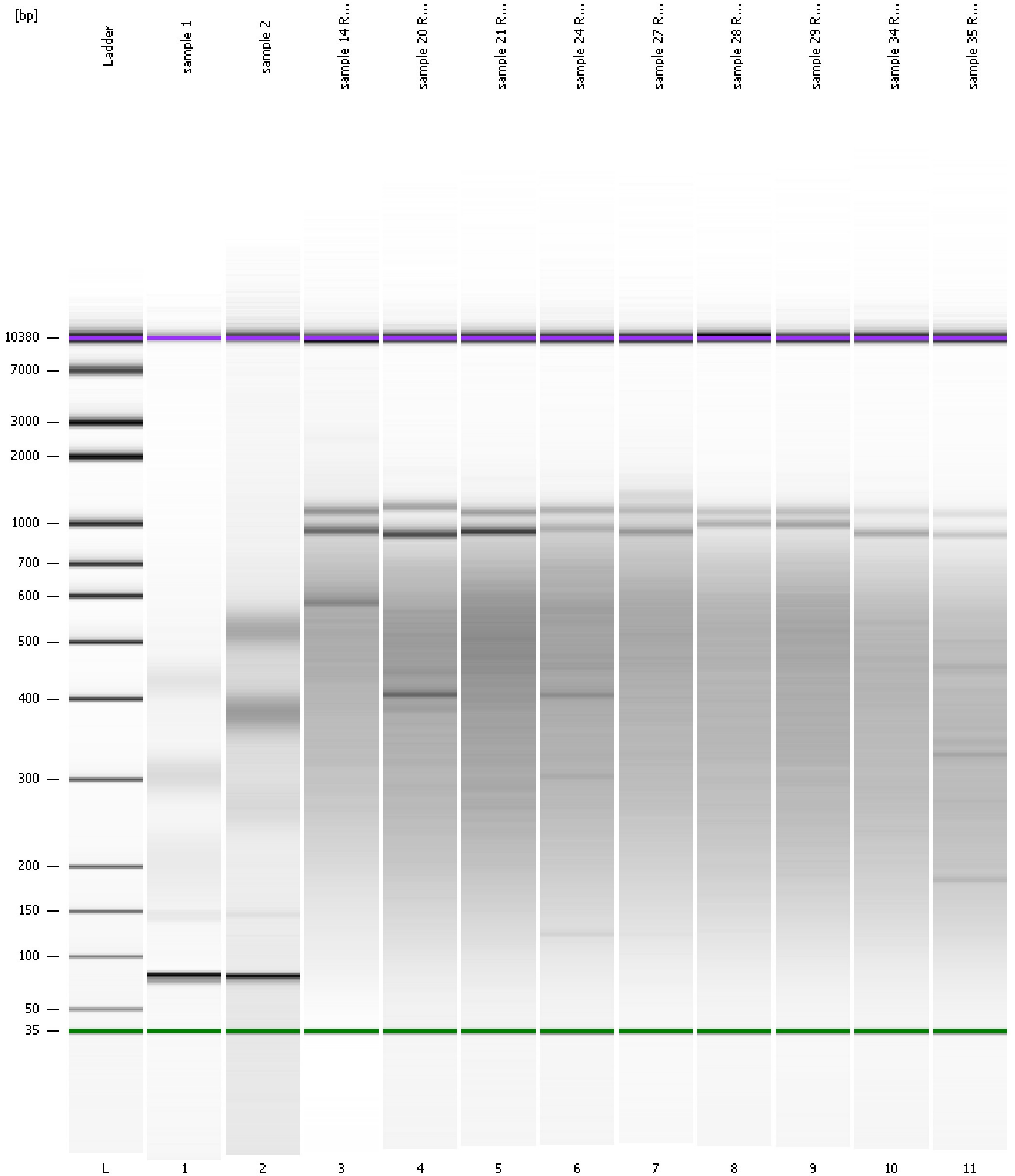
Region table for sample 11 : sample 35 Resoni 1:6

From [bp]	To [bp]	Average Size [bp]	Molarity [pmol/l]	Conc. [pg/μl]	Corr. Area	% of Total	Size distribution in CV [%]	Color
114	1,280	391	8,190.2	1,501.91	847.1	94	49.6	Blue

Assay Class: High Sensitivity DNA Assay
Data Path: C:\...ents and Settings\Bioanalyzer\2013-04-12\2013-04-12_002.xad

Created: 4/12/2013 1:37:48 PM
Modified: 4/12/2013 2:20:26 PM

Gel Image



Assay Class: High Sensitivity DNA Assay
 Data Path: C:\...ents and Settings\Bioanalyzer\2013-04-12\2013-04-12_002.xad

Created: 4/12/2013 1:37:48 PM
 Modified: 4/12/2013 2:20:26 PM

Run Logbook

Description	Number	Source	Category	Sub Category	Time	Time Zone	User	Host
Run ended on port 1 (Number of wells acquired: 12)		Instrument	Run		4/12/2013 2:19:07 PM	(GMT --07:00) Pacific Standard Time	UC Davis	D8XSMGH1
Run started on port 1 (File: C:\Documents and Settings\Bioanalyzer\2013-04-12\2013-04-12_002.xad)		Instrument	Run		4/12/2013 1:37:54 PM	(GMT --07:00) Pacific Standard Time	UC Davis	D8XSMGH1
Product Number : G2938B		Instrument	Run		4/12/2013 1:37:54 PM	(GMT --07:00) Pacific Standard Time	UC Davis	D8XSMGH1
Name :		Instrument	Run		4/12/2013 1:37:54 PM	(GMT --07:00) Pacific Standard Time	UC Davis	D8XSMGH1
Vendor : Agilent Technologies		Instrument	Run		4/12/2013 1:37:54 PM	(GMT --07:00) Pacific Standard Time	UC Davis	D8XSMGH1
Serial# : DE13701086		Instrument	Run		4/12/2013 1:37:54 PM	(GMT --07:00) Pacific Standard Time	UC Davis	D8XSMGH1
Firmware : C.01.069		Instrument	Run		4/12/2013 1:37:54 PM	(GMT --07:00) Pacific Standard Time	UC Davis	D8XSMGH1
Cartridge : Electrode		Instrument	Run		4/12/2013 1:37:54 PM	(GMT --07:00) Pacific Standard Time	UC Davis	D8XSMGH1