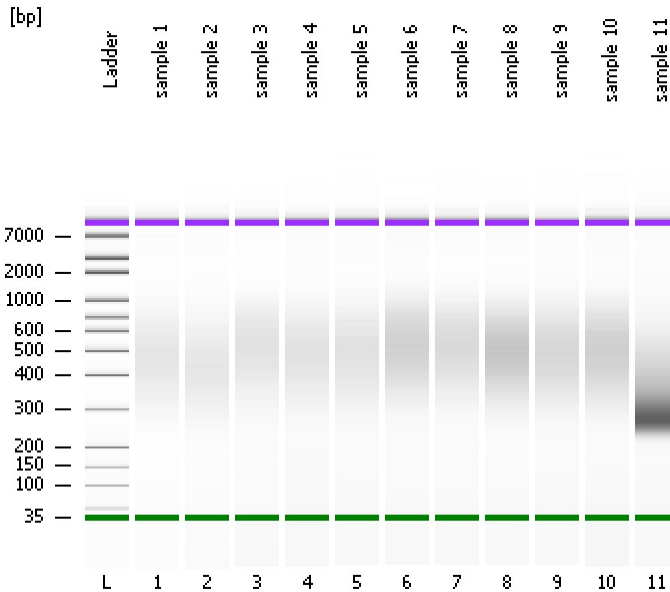


Assay Class: High Sensitivity DNA Assay
Data Path: C:\...ents and Settings\Bioanalyzer\2013-04-15\2013-04-15_001.xad

Created: 4/15/2013 9:52:19 AM
Modified: 4/15/2013 10:33:43 AM

Electrophoresis File Run Summary



Instrument Information:

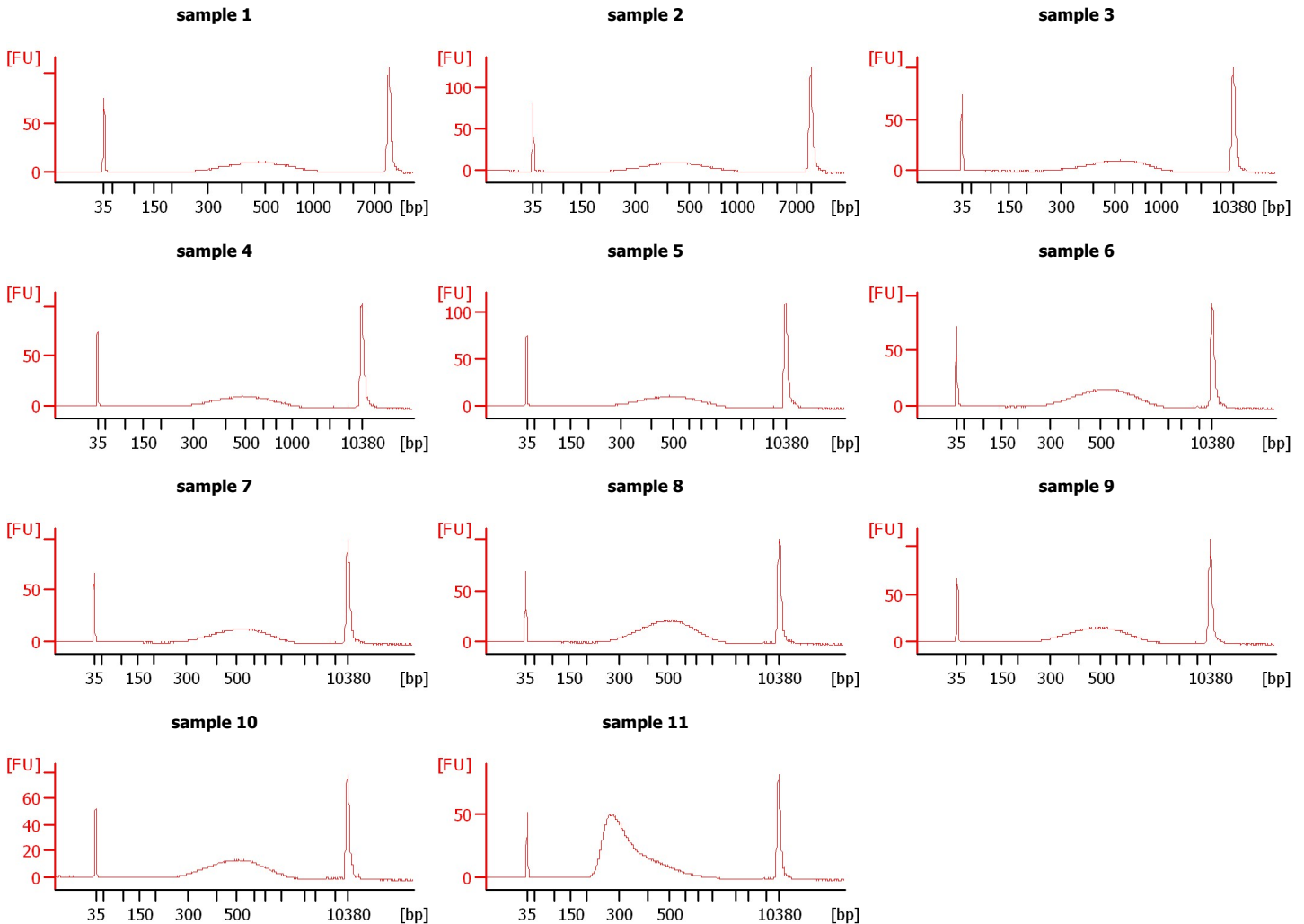
Instrument Name: DE13701086 Firmware: C.01.069
Serial#: DE13701086 Type: G2938B

Assay Information:

Assay Origin Path: C:\Program Files\Agilent\2100 bioanalyzer\2100 expert\assays\dsDNA\High Sensitivity DNA.xsy
Assay Class: High Sensitivity DNA Assay
Version: 1.03
Assay Comments: Copyright © 2003-2010 Agilent Technologies

Chip Information:

Chip Lot #: Reagent Kit Lot #:
Chip Comments:



Assay Class: High Sensitivity DNA Assay
Data Path: C:\...ents and Settings\Bioanalyzer\2013-04-15\2013-04-15_001.xad

Created: 4/15/2013 9:52:19 AM
Modified: 4/15/2013 10:33:43 AM

Electrophoresis File Run Summary (Chip Summary)

Sample Name	Sample Comment	Rest. Digest	Status	Observation	Result Label	Result Color
sample 1		<input type="checkbox"/>	✓			
sample 2		<input type="checkbox"/>	✓			
sample 3		<input type="checkbox"/>	✓			
sample 4		<input type="checkbox"/>	✓			
sample 5		<input type="checkbox"/>	✓			
sample 6		<input type="checkbox"/>	✓			
sample 7		<input type="checkbox"/>	✓			
sample 8		<input type="checkbox"/>	✓			
sample 9		<input type="checkbox"/>	✓			
sample 10		<input type="checkbox"/>	✓			
sample 11		<input type="checkbox"/>	✓			
Ladder		<input type="checkbox"/>	✓			

Chip Lot #

Reagent Kit Lot #

Chip Comments :

Assay Class: High Sensitivity DNA Assay
 Data Path: C:\...ents and Settings\Bioanalyzer\2013-04-15\2013-04-15_001.xad

Created: 4/15/2013 9:52:19 AM
 Modified: 4/15/2013 10:33:43 AM

Electrophoresis Assay Details

General Analysis Settings

Number of Available Sample and Ladder Wells (Max.) : 12
 Minimum Visible Range [s] : 32
 Maximum Visible Range [s] : 138
 Start Analysis Time Range [s] : 33
 End Analysis Time Range [s] : 137.5
 Ladder Concentration [pg/μl] : 1950
 Uses Standard Area for Ladder Fragments
 Lower Marker Concentration [pg/μl] : 125
 Upper Marker Concentration [pg/μl] : 75
 Used Upper Marker for Quantitation
 Standard Curve Fit is Point to Point
 Show Data Aligned to Lower and Upper Marker

Integrator Settings

Integration Start Time [s] : 33.05
 Integration End Time [s] : 137
 Slope Threshold : 0.8
 Height Threshold [FU] : 5
 Area Threshold : 0.1
 Width Threshold [s] : 0.6
 Baseline Plateau [s] : 0.5

Filter Settings

Filter Width [s] : 0.5
 Polynomial Order : 4

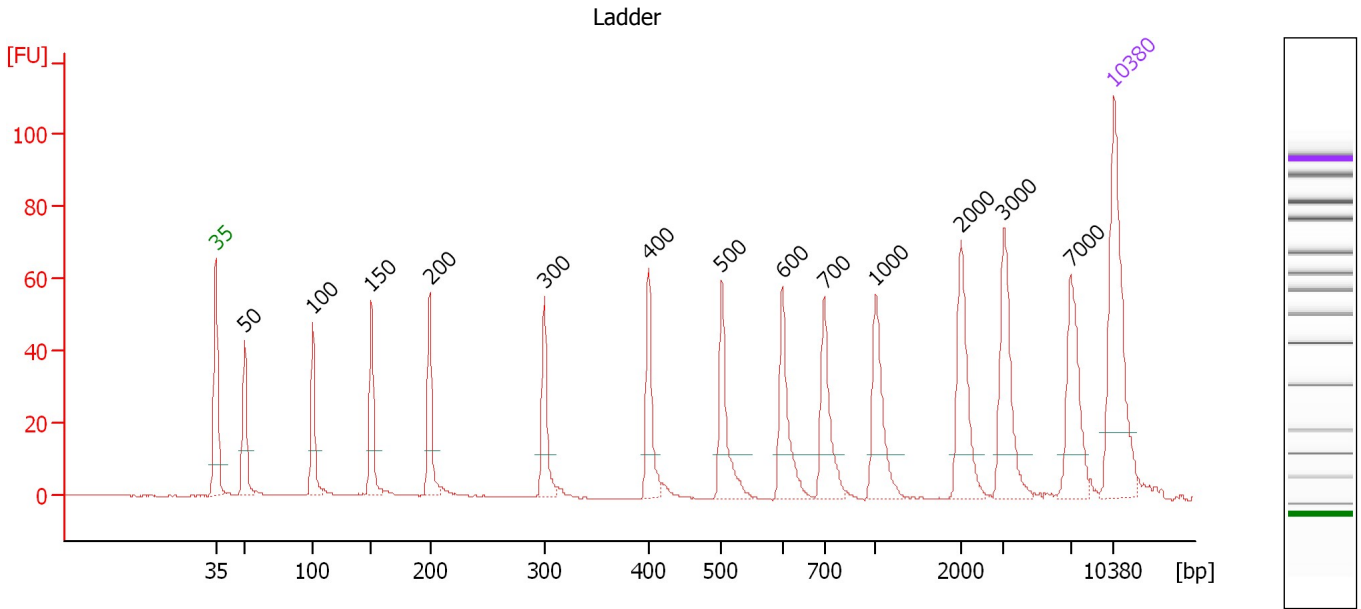
Ladder

Ladder Peak	Size	Area
1	35	160
2	50	210
3	100	208
4	150	221
5	200	242
6	300	270
7	400	305
8	500	306
9	600	336
10	700	321
11	1000	366
12	2000	413
13	3000	411
14	7000	400
15	10380	214

Assay Class: High Sensitivity DNA Assay
 Data Path: C:\...ents and Settings\Bioanalyzer\2013-04-15\2013-04-15_001.xad

Created: 4/15/2013 9:52:19 AM
 Modified: 4/15/2013 10:33:43 AM

Electropherogram Summary



Overall Results for Ladder

Noise: 0.1

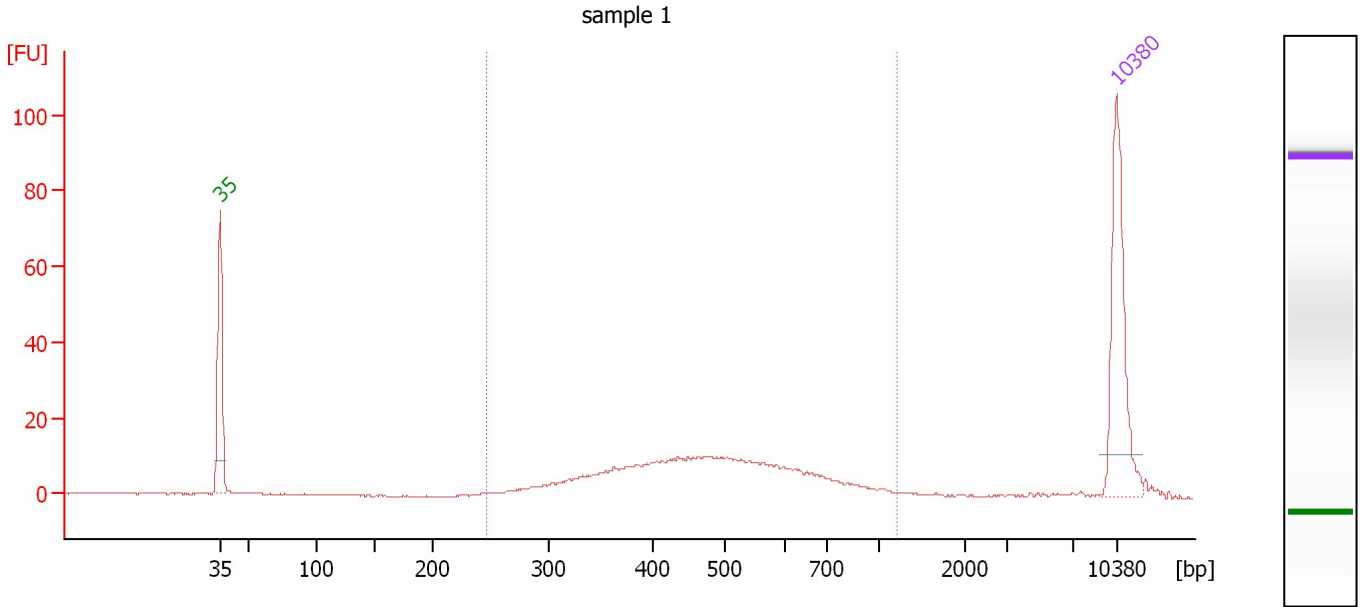
Peak table for Ladder

Peak	Size [bp]	Conc. [pg/μl]	Molarity [pmol/l]	Observations
1	35	125.00	5,411.3	Lower Marker
2	50	150.00	4,545.5	Ladder Peak
3	100	150.00	2,272.7	Ladder Peak
4	150	150.00	1,515.2	Ladder Peak
5	200	150.00	1,136.4	Ladder Peak
6	300	150.00	757.6	Ladder Peak
7	400	150.00	568.2	Ladder Peak
8	500	150.00	454.5	Ladder Peak
9	600	150.00	378.8	Ladder Peak
10	700	150.00	324.7	Ladder Peak
11	1,000	150.00	227.3	Ladder Peak
12	2,000	150.00	113.6	Ladder Peak
13	3,000	150.00	75.8	Ladder Peak
14	7,000	150.00	32.5	Ladder Peak
15	10,380	75.00	10.9	Upper Marker

Assay Class: High Sensitivity DNA Assay
 Data Path: C:\...ents and Settings\Bioanalyzer\2013-04-15\2013-04-15_001.xad

Created: 4/15/2013 9:52:19 AM
 Modified: 4/15/2013 10:33:43 AM

Electropherogram Summary Continued ...



Overall Results for sample 1 : sample 1

Number of peaks found: 0 Corr. Area 1: 241.0
 Noise: 0.1

Peak table for sample 1 : sample 1

Peak	Size [bp]	Conc. [pg/μl]	Molarity [pmol/l]	Observations
1	35	125.00	5,411.3	Lower Marker
2	10,380	75.00	10.9	Upper Marker

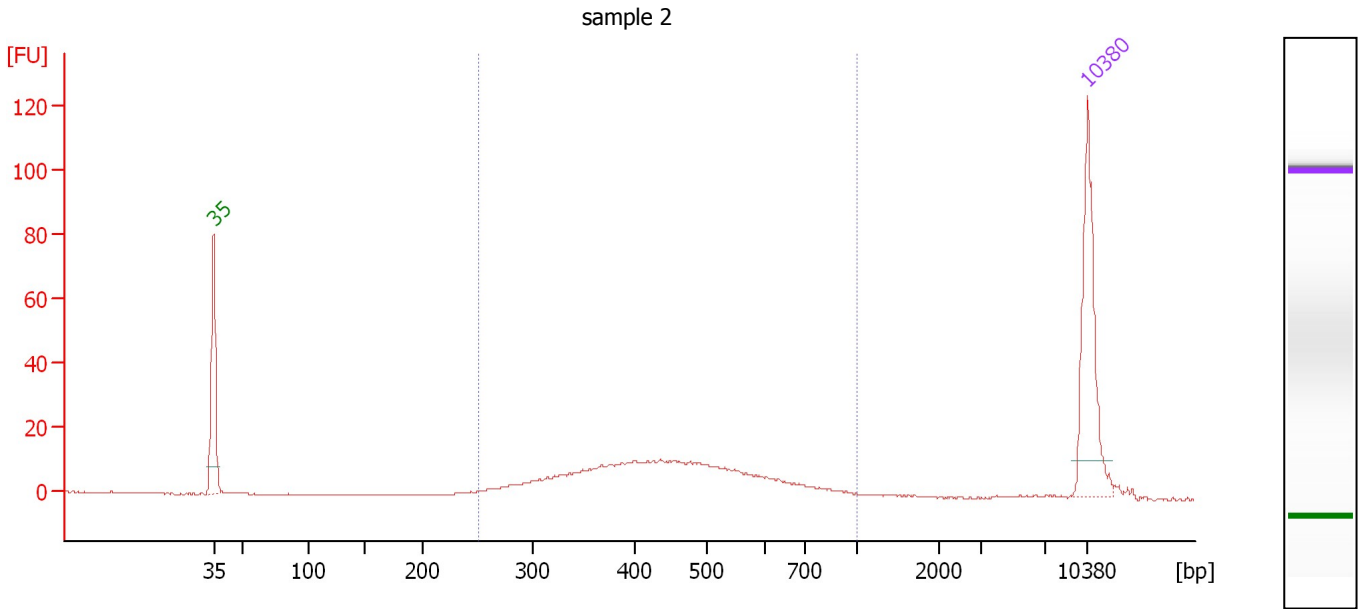
Region table for sample 1 : sample 1

From [bp]	To [bp]	Average Size [bp]	Molarity [pmol/l]	Conc. [pg/μl]	Corr. Area	% of Total	Size distribution in CV [%]	Color
247	1,213	496	800.5	234.71	241.0	94	30.2	Blue

Assay Class: High Sensitivity DNA Assay
 Data Path: C:\...ents and Settings\Bioanalyzer\2013-04-15\2013-04-15_001.xad

Created: 4/15/2013 9:52:19 AM
 Modified: 4/15/2013 10:33:43 AM

Electropherogram Summary Continued ...



Overall Results for sample 2 : sample 2

Number of peaks found: 0 Corr. Area 1: 245.5
 Noise: 0.1

Peak table for sample 2 : sample 2

Peak	Size [bp]	Conc. [pg/μl]	Molarity [pmol/l]	Observations
1	35	125.00	5,411.3	Lower Marker
2	10,380	75.00	10.9	Upper Marker

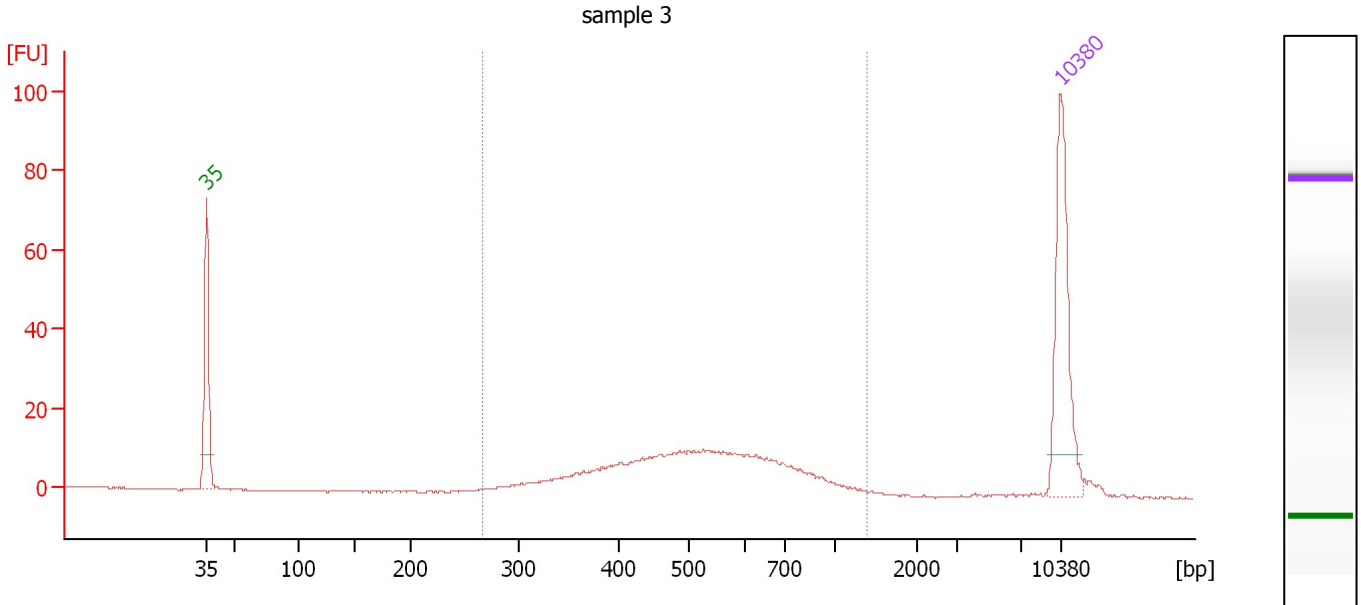
Region table for sample 2 : sample 2

From [bp]	To [bp]	Average Size [bp]	Molarity [pmol/l]	Conc. [pg/μl]	Corr. Area	% of Total	Size distribution in CV [%]	Color
252	1,000	458	800.8	220.51	245.5	97	26.9	Blue

Assay Class: High Sensitivity DNA Assay
 Data Path: C:\...ents and Settings\Bioanalyzer\2013-04-15\2013-04-15_001.xad

Created: 4/15/2013 9:52:19 AM
 Modified: 4/15/2013 10:33:43 AM

Electropherogram Summary Continued ...



Overall Results for sample 3 : sample 3

Number of peaks found: 0 Corr. Area 1: 244.6
 Noise: 0.2

Peak table for sample 3 : sample 3

Peak	Size [bp]	Conc. [pg/μl]	Molarity [pmol/l]	Observations
1	35	125.00	5,411.3	Lower Marker
2	10,380	75.00	10.9	Upper Marker

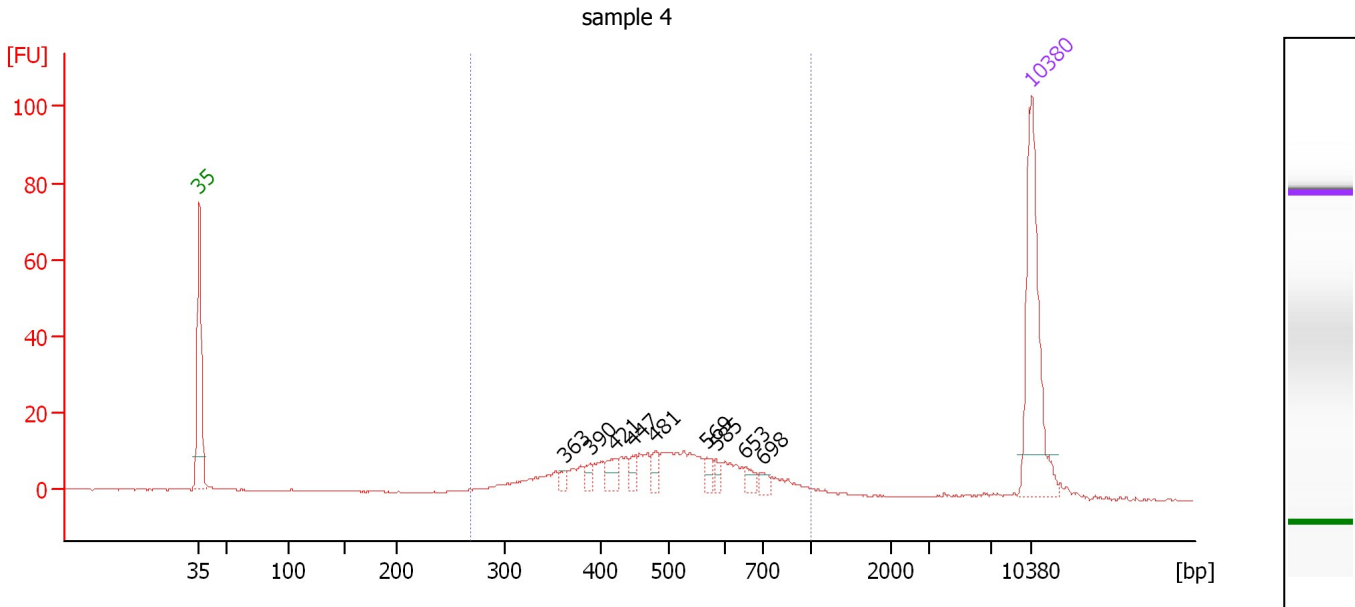
Region table for sample 3 : sample 3

From [bp]	To [bp]	Average Size [bp]	Molarity [pmol/l]	Conc. [pg/μl]	Corr. Area	% of Total	Size distribution in CV [%]	Color
267	1,387	547	706.3	225.76	244.6	95	32.3	Blue

Assay Class: High Sensitivity DNA Assay
 Data Path: C:\...ents and Settings\Bioanalyzer\2013-04-15\2013-04-15_001.xad

Created: 4/15/2013 9:52:19 AM
 Modified: 4/15/2013 10:33:43 AM

Electropherogram Summary Continued ...



Overall Results for sample 4 : sample 4

Number of peaks found: 9 Corr. Area 1: 251.1
 Noise: 0.1

Peak table for sample 4 : sample 4

Peak	Size [bp]	Conc. [pg/μl]	Molarity [pmol/l]	Observations
1	35	125.00	5,411.3	Lower Marker
2	363	5.20	21.7	
3	390	5.88	22.8	
4	421	10.95	39.4	
5	447	6.45	21.8	
6	481	9.10	28.6	
7	569	6.65	17.7	
8	585	4.91	12.7	
9	653	6.85	15.9	
10	698	5.27	11.4	
11	10,380	75.00	10.9	Upper Marker

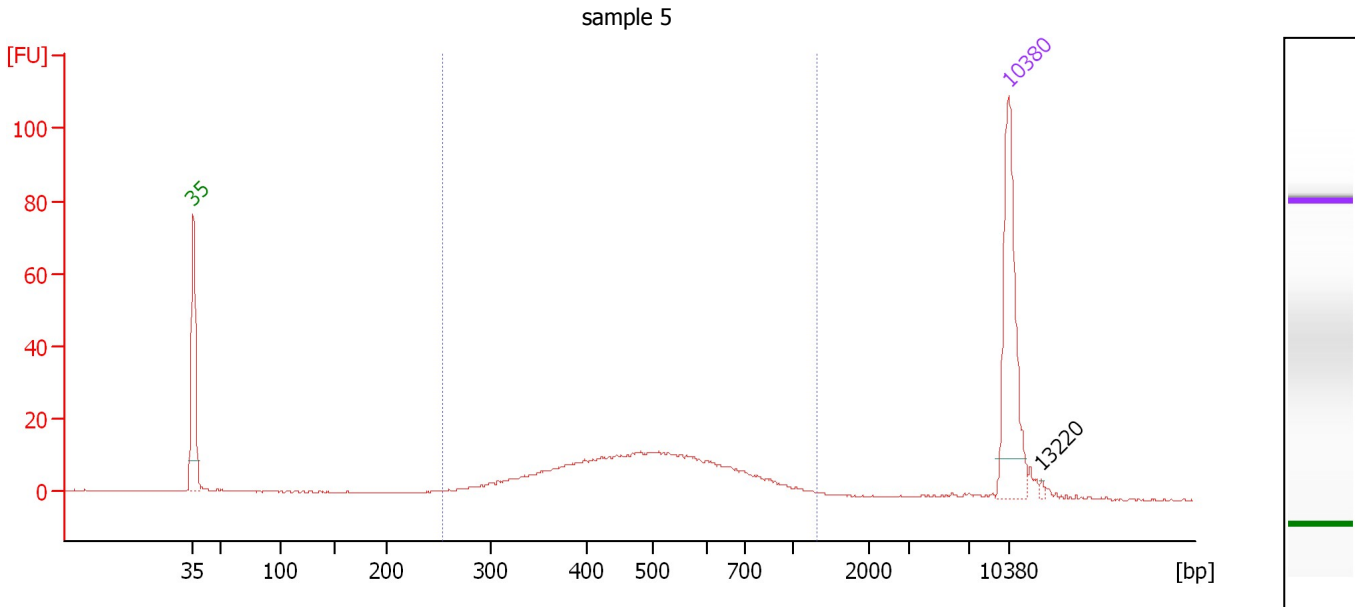
Region table for sample 4 : sample 4

From [bp]	To [bp]	Average Size [bp]	Molarity [pmol/l]	Conc. [pg/μl]	Corr. Area	% of Total	Size distribution in CV [%]	Color
269	1,000	507	755.0	228.84	251.1	85	27.6	Blue

Assay Class: High Sensitivity DNA Assay
 Data Path: C:\...ents and Settings\Bioanalyzer\2013-04-15\2013-04-15_001.xad

Created: 4/15/2013 9:52:19 AM
 Modified: 4/15/2013 10:33:43 AM

Electropherogram Summary Continued ...



Overall Results for sample 5 : sample 5

Number of peaks found: 1 Corr. Area 1: 272.7
 Noise: 0.1

Peak table for sample 5 : sample 5

Peak	Size [bp]	Conc. [pg/μl]	Molarity [pmol/l]	Observations
1	35	125.00	5,411.3	Lower Marker
2	10,380	75.00	10.9	Upper Marker
3	13,220	0.00	0.0	

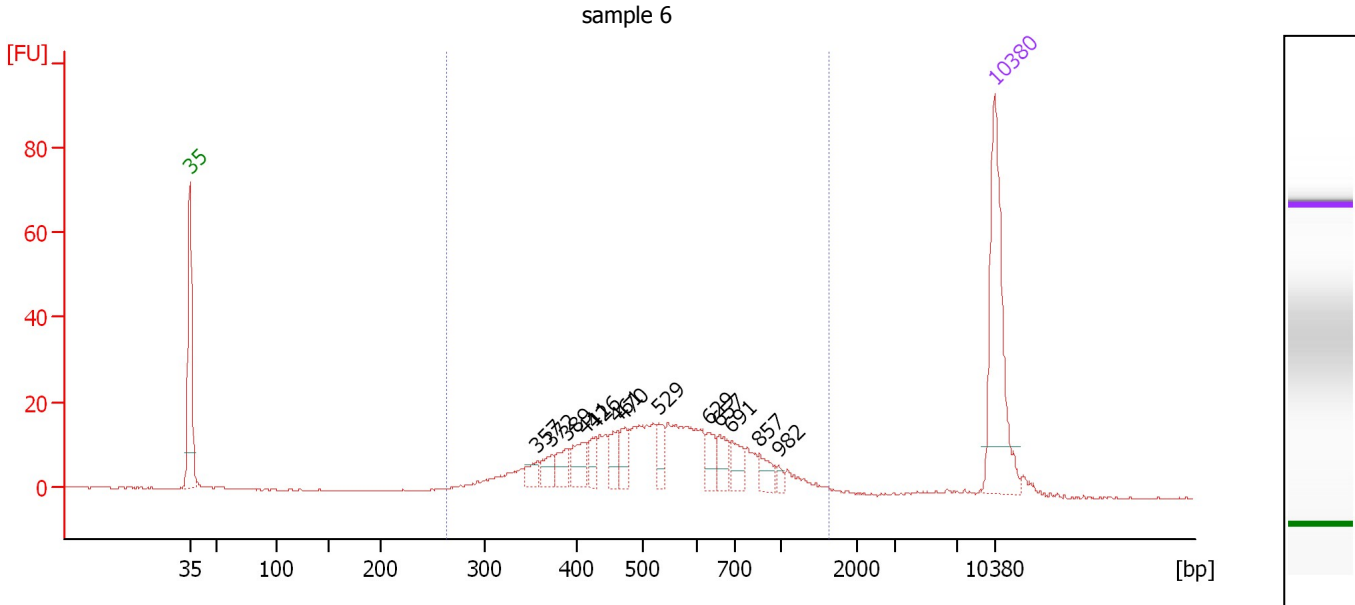
Region table for sample 5 : sample 5

From [bp]	To [bp]	Average Size [bp]	Molarity [pmol/l]	Conc. [pg/μl]	Corr. Area	% of Total	Size distribution in CV [%]	Color
253	1,313	516	791.5	239.40	272.7	92	31.7	Blue

Assay Class: High Sensitivity DNA Assay
 Data Path: C:\...ents and Settings\Bioanalyzer\2013-04-15\2013-04-15_001.xad

Created: 4/15/2013 9:52:19 AM
 Modified: 4/15/2013 10:33:43 AM

Electropherogram Summary Continued ...



Overall Results for sample 6 : sample 6

Number of peaks found: 13 Corr. Area 1: 378.0
 Noise: 0.2

Peak table for sample 6 : sample 6

Peak	Size [bp]	Conc. [pg/μl]	Molarity [pmol/l]	Observations
1	35	125.00	5,411.3	Lower Marker
2	357	9.96	42.3	
3	372	11.87	48.4	
4	389	14.72	57.4	
5	411	18.18	67.1	
6	426	10.72	38.1	
7	461	14.23	46.8	
8	470	15.03	48.5	
9	529	12.81	36.7	
10	629	13.32	32.1	
11	657	13.22	30.5	
12	691	14.85	32.6	
13	857	10.44	18.4	
14	982	3.55	5.5	
15	10,380	75.00	10.9	Upper Marker

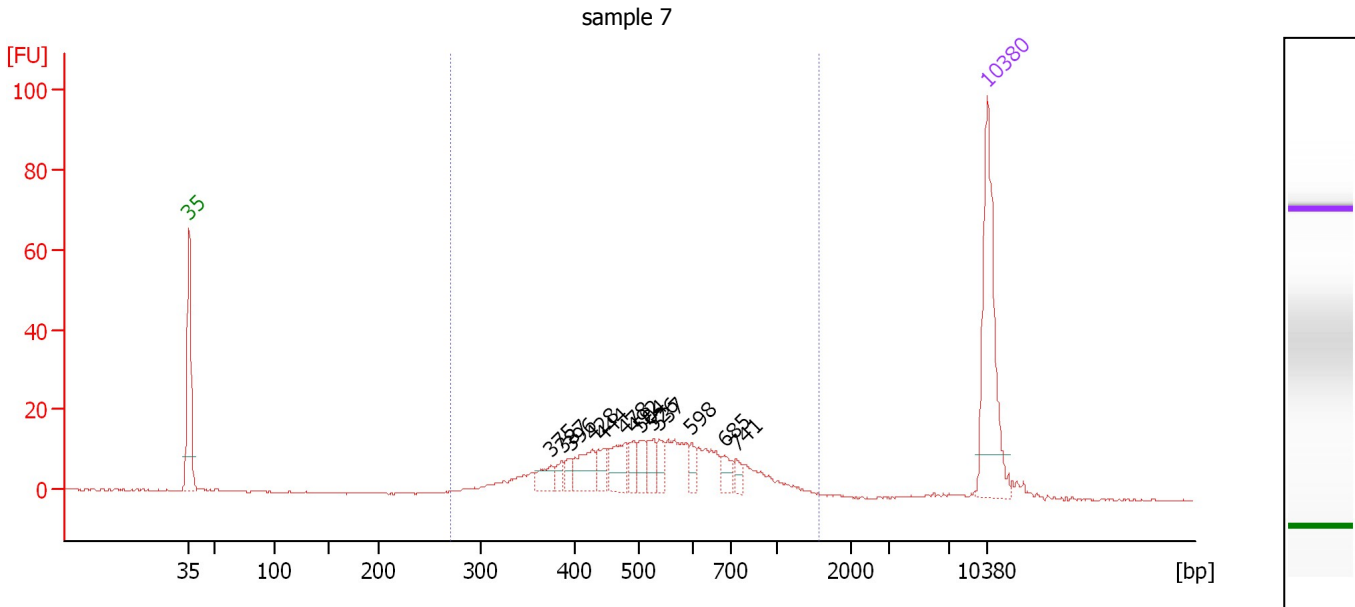
Region table for sample 6 : sample 6

From [bp]	To [bp]	Average Size [bp]	Molarity [pmol/l]	Conc. [pg/μl]	Corr. Area	% of Total	Size distribution in CV [%]	Color
264	1,636	569	1,142.4	371.56	378.0	96	37.6	Blue

Assay Class: High Sensitivity DNA Assay
 Data Path: C:\...ents and Settings\Bioanalyzer\2013-04-15\2013-04-15_001.xad

Created: 4/15/2013 9:52:19 AM
 Modified: 4/15/2013 10:33:43 AM

Electropherogram Summary Continued ...



Overall Results for sample 7 : sample 7

Number of peaks found: 13 Corr. Area 1: 300.3
 Noise: 0.2

Peak table for sample 7 : sample 7

Peak	Size [bp]	Conc. [pg/μl]	Molarity [pmol/l]	Observations
1	35	125.00	5,411.3	Lower Marker
2	375	12.79	51.7	
3	387	6.70	26.2	
4	396	7.63	29.2	
5	428	24.41	86.4	
6	444	13.61	46.4	
7	478	24.81	78.6	
8	492	12.68	39.1	
9	504	12.79	38.4	
10	526	11.85	34.1	
11	537	10.15	28.6	
12	598	9.11	23.1	
13	685	9.60	21.2	
14	741	6.05	12.4	
15	10,380	75.00	10.9	Upper Marker

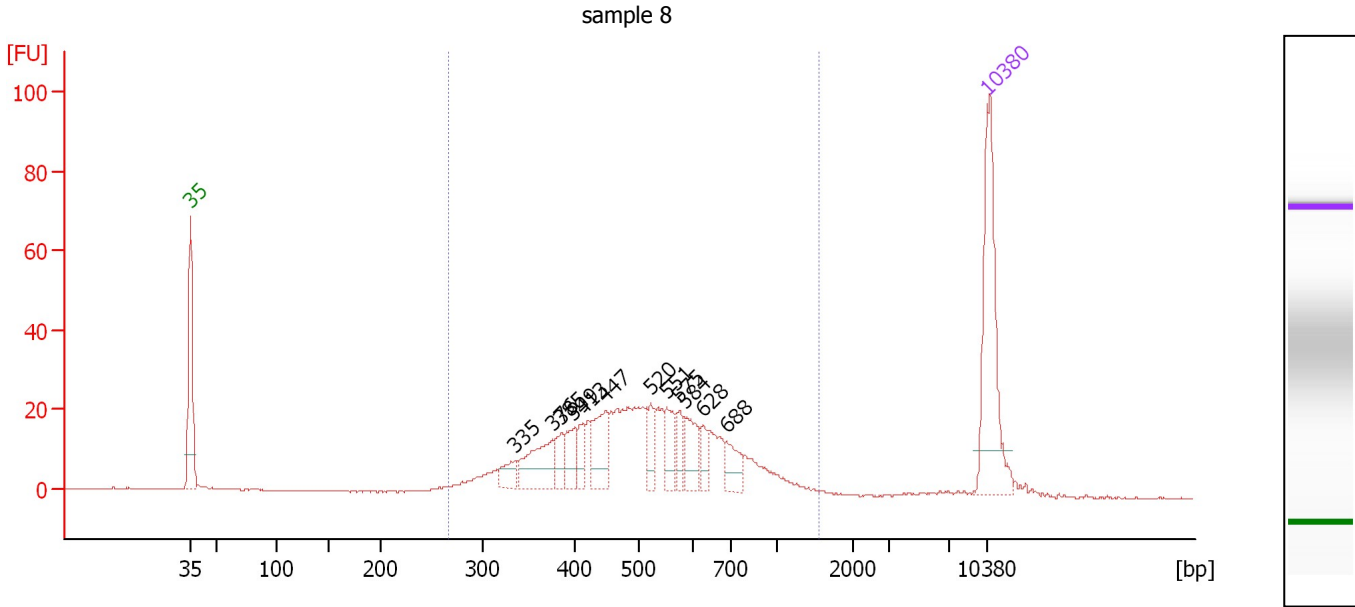
Region table for sample 7 : sample 7

From [bp]	To [bp]	Average Size [bp]	Molarity [pmol/l]	Conc. [pg/μl]	Corr. Area	% of Total	Size distribution in CV [%]	Color
271	1,580	558	916.7	298.41	300.3	96	34.3	Blue

Assay Class: High Sensitivity DNA Assay
 Data Path: C:\...ents and Settings\Bioanalyzer\2013-04-15\2013-04-15_001.xad

Created: 4/15/2013 9:52:19 AM
 Modified: 4/15/2013 10:33:43 AM

Electropherogram Summary Continued ...



Overall Results for sample 8 : sample 8

Number of peaks found: 12 Corr. Area 1: 497.1
 Noise: 0.2

Peak table for sample 8 : sample 8

Peak	Size [bp]	Conc. [pg/μl]	Molarity [pmol/l]	Observations
1	35	125.00	5,411.3	Lower Marker
2	335	14.44	65.3	
3	376	40.42	162.8	
4	385	13.08	51.4	
5	399	20.17	76.7	
6	413	12.36	45.4	
7	447	33.00	112.0	
8	520	14.53	42.3	
9	551	18.44	50.7	
10	575	13.39	35.3	
11	584	24.73	64.2	
12	628	9.86	23.8	
13	688	17.74	39.0	
14	10,380	75.00	10.9	Upper Marker

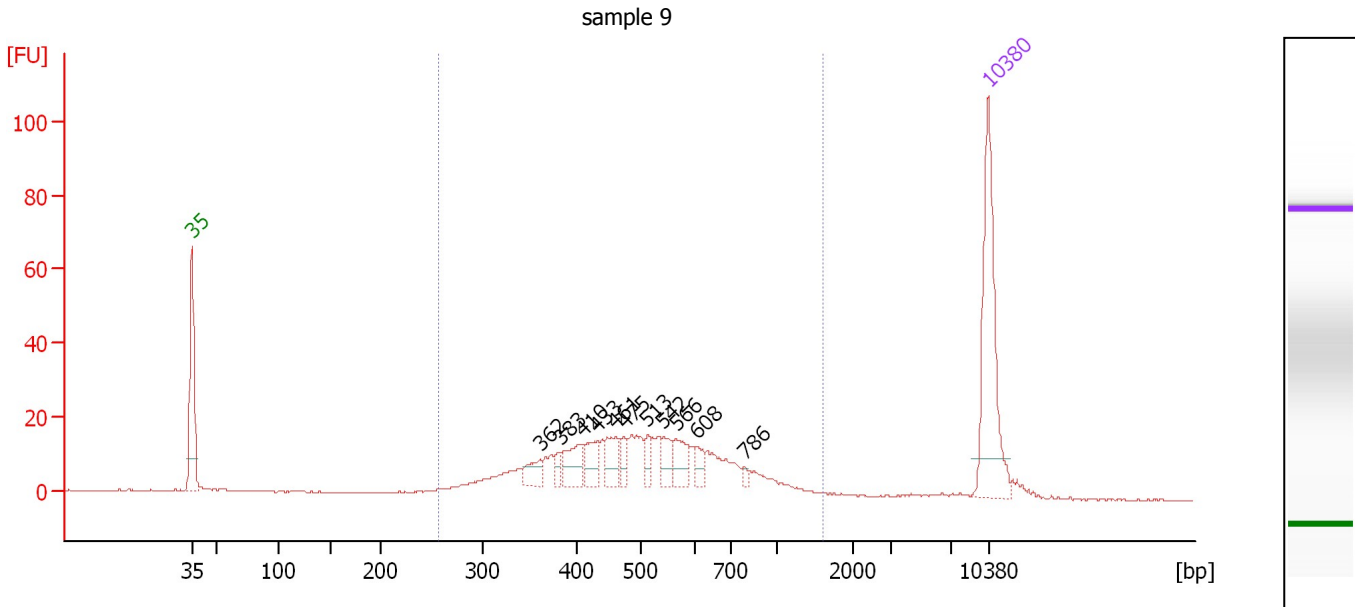
Region table for sample 8 : sample 8

From [bp]	To [bp]	Average Size [bp]	Molarity [pmol/l]	Conc. [pg/μl]	Corr. Area	% of Total	Size distribution in CV [%]	Color
267	1,575	531	1,498.5	464.93	497.1	94	34.0	Blue

Assay Class: High Sensitivity DNA Assay
 Data Path: C:\...ents and Settings\Bioanalyzer\2013-04-15\2013-04-15_001.xad

Created: 4/15/2013 9:52:19 AM
 Modified: 4/15/2013 10:33:43 AM

Electropherogram Summary Continued ...



Overall Results for sample 9 : sample 9

Number of peaks found: 11 Corr. Area 1: 383.8
 Noise: 0.2

Peak table for sample 9 : sample 9

Peak	Size [bp]	Conc. [pg/μl]	Molarity [pmol/l]	Observations
1	35	125.00	5,411.3	Lower Marker
2	362	13.90	58.2	
3	383	6.91	27.4	
4	410	24.40	90.3	
5	433	17.55	61.3	
6	461	19.57	64.4	
7	475	9.30	29.7	
8	513	9.31	27.5	
9	542	13.23	37.0	
10	566	17.82	47.7	
11	608	8.66	21.6	
12	786	3.02	5.8	
13	10,380	75.00	10.9	Upper Marker

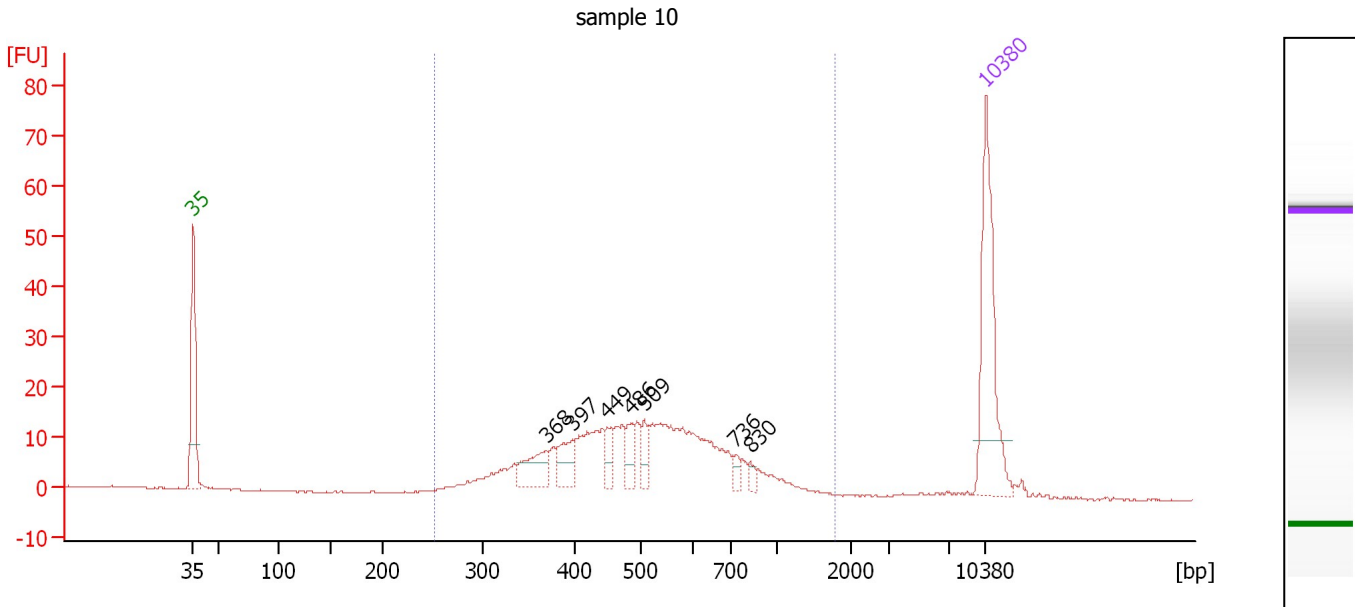
Region table for sample 9 : sample 9

From [bp]	To [bp]	Average Size [bp]	Molarity [pmol/l]	Conc. [pg/μl]	Corr. Area	% of Total	Size distribution in CV [%]	Color
255	1,613	529	1,155.9	352.39	383.8	92	36.3	Blue

Assay Class: High Sensitivity DNA Assay
 Data Path: C:\...ents and Settings\Bioanalyzer\2013-04-15\2013-04-15_001.xad

Created: 4/15/2013 9:52:19 AM
 Modified: 4/15/2013 10:33:43 AM

Electropherogram Summary Continued ...



Overall Results for sample 10 : sample 10

Number of peaks found: 7 Corr. Area 1: 329.0
 Noise: 0.1

Peak table for sample 10 : sample 10

Peak	Size [bp]	Conc. [pg/μl]	Molarity [pmol/l]	Observations
1	35	125.00	5,411.3	Lower Marker
2	368	27.72	114.2	
3	397	23.95	91.4	
4	449	14.16	47.8	
5	486	14.72	45.9	
6	509	11.97	35.7	
7	736	5.96	12.3	
8	830	5.10	9.3	
9	10,380	75.00	10.9	Upper Marker

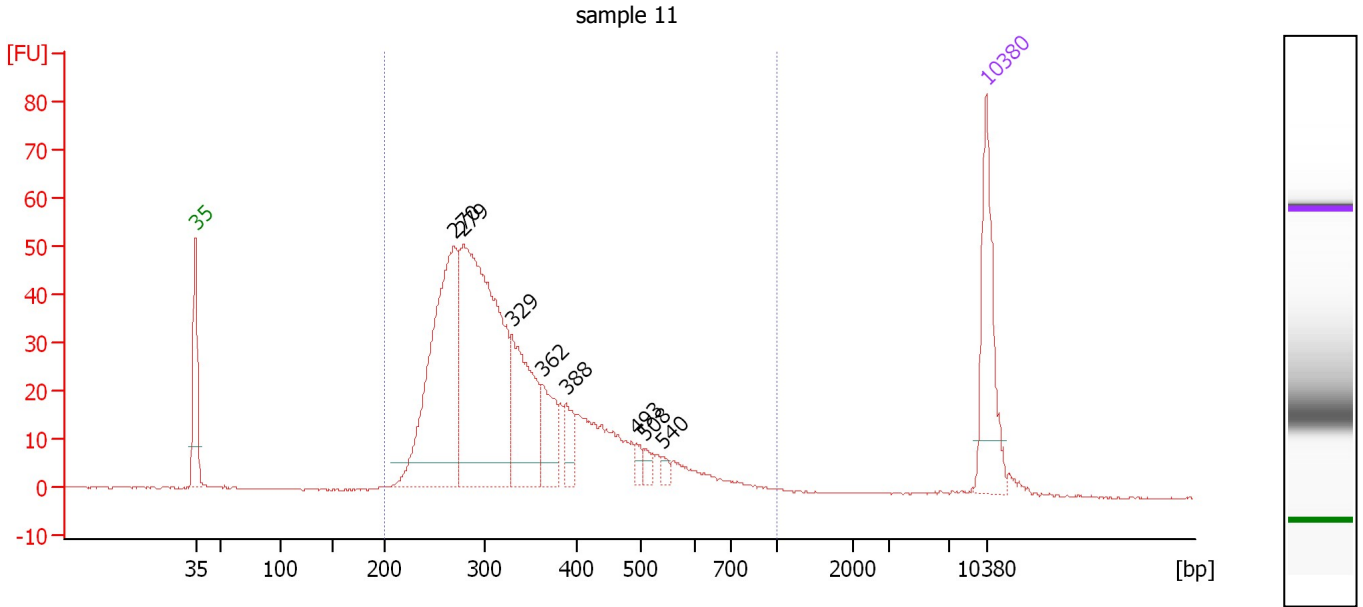
Region table for sample 10 : sample 10

From [bp]	To [bp]	Average Size [bp]	Molarity [pmol/l]	Conc. [pg/μl]	Corr. Area	% of Total	Size distribution in CV [%]	Color
251	1,795	537	1,286.4	397.74	329.0	95	36.9	Blue

Assay Class: High Sensitivity DNA Assay
 Data Path: C:\...ents and Settings\Bioanalyzer\2013-04-15\2013-04-15_001.xad

Created: 4/15/2013 9:52:19 AM
 Modified: 4/15/2013 10:33:43 AM

Electropherogram Summary Continued ...



Overall Results for sample 11 : sample 11

Number of peaks found: 8 Corr. Area 1: 853.4
 Noise: 0.1

Peak table for sample 11 : sample 11

Peak	Size [bp]	Conc. [pg/μl]	Molarity [pmol/l]	Observations
1	35	125.00	5,411.3	Lower Marker
2	270	299.11	1,677.4	
3	279	420.25	2,285.3	
4	329	125.54	577.7	
5	362	52.72	220.5	
6	388	26.52	103.5	
7	493	9.41	28.9	
8	508	9.41	28.1	
9	540	5.86	16.4	
10	10,380	75.00	10.9	Upper Marker

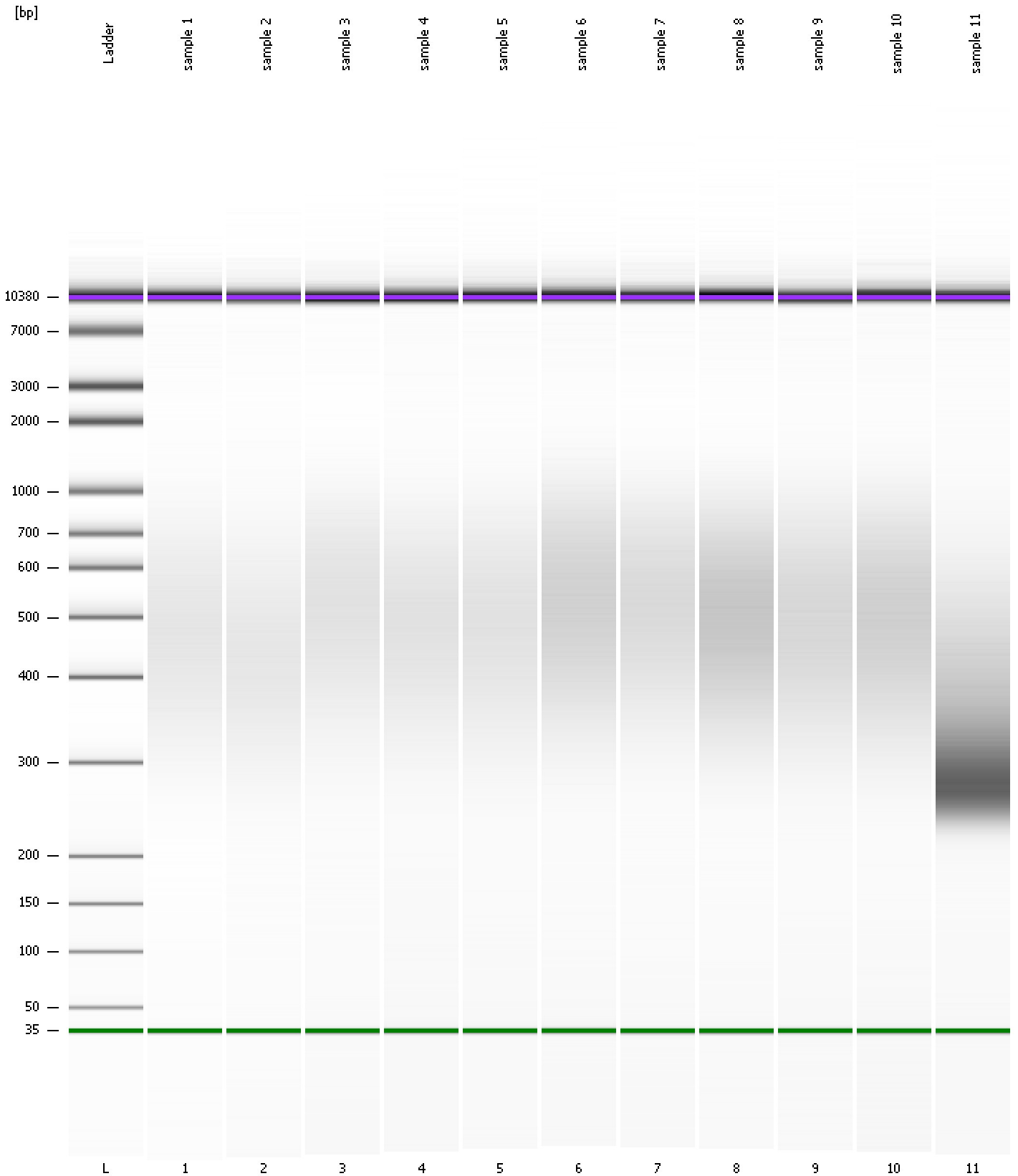
Region table for sample 11 : sample 11

From [bp]	To [bp]	Average Size [bp]	Molarity [pmol/l]	Conc. [pg/μl]	Corr. Area	% of Total	Size distribution in CV [%]	Color
200	1,000	344	5,570.2	1,156.07	853.4	97	30.0	Blue

Assay Class: High Sensitivity DNA Assay
Data Path: C:\...ents and Settings\Bioanalyzer\2013-04-15\2013-04-15_001.xad

Created: 4/15/2013 9:52:19 AM
Modified: 4/15/2013 10:33:43 AM

Gel Image



Assay Class: High Sensitivity DNA Assay
 Data Path: C:\...ents and Settings\Bioanalyzer\2013-04-15\2013-04-15_001.xad

Created: 4/15/2013 9:52:19 AM
 Modified: 4/15/2013 10:33:43 AM

Run Logbook

Description	Number	Source	Category	Sub Category	Time	Time Zone	User	Host
Run ended on port 1 (Number of wells acquired: 12)		Instrument	Run		4/15/2013 10:33:39 AM	(GMT --07:00) Pacific Standard Time	UC Davis	D8XSMGH1
Run started on port 1 (File: C:\Documents and Settings\Bioanalyzer\2013-04-15\2013-04-15_001.xad)		Instrument	Run		4/15/2013 9:52:25 AM	(GMT --07:00) Pacific Standard Time	UC Davis	D8XSMGH1
Product Number : G2938B		Instrument	Run		4/15/2013 9:52:25 AM	(GMT --07:00) Pacific Standard Time	UC Davis	D8XSMGH1
Name :		Instrument	Run		4/15/2013 9:52:25 AM	(GMT --07:00) Pacific Standard Time	UC Davis	D8XSMGH1
Vendor : Agilent Technologies		Instrument	Run		4/15/2013 9:52:25 AM	(GMT --07:00) Pacific Standard Time	UC Davis	D8XSMGH1
Serial# : DE13701086		Instrument	Run		4/15/2013 9:52:25 AM	(GMT --07:00) Pacific Standard Time	UC Davis	D8XSMGH1
Firmware : C.01.069		Instrument	Run		4/15/2013 9:52:25 AM	(GMT --07:00) Pacific Standard Time	UC Davis	D8XSMGH1
Cartridge : Electrode		Instrument	Run		4/15/2013 9:52:25 AM	(GMT --07:00) Pacific Standard Time	UC Davis	D8XSMGH1