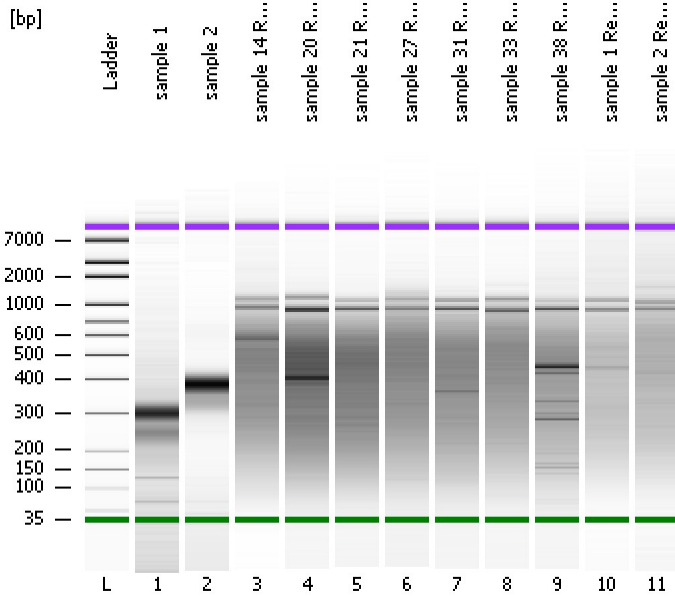


Assay Class: High Sensitivity DNA Assay  
Data Path: C:\...ents and Settings\Bioanalyzer\2013-04-15\2013-04-15\_002.xad

Created: 4/15/2013 11:21:59 AM  
Modified: 4/15/2013 12:04:56 PM

### Electrophoresis File Run Summary



#### Instrument Information:

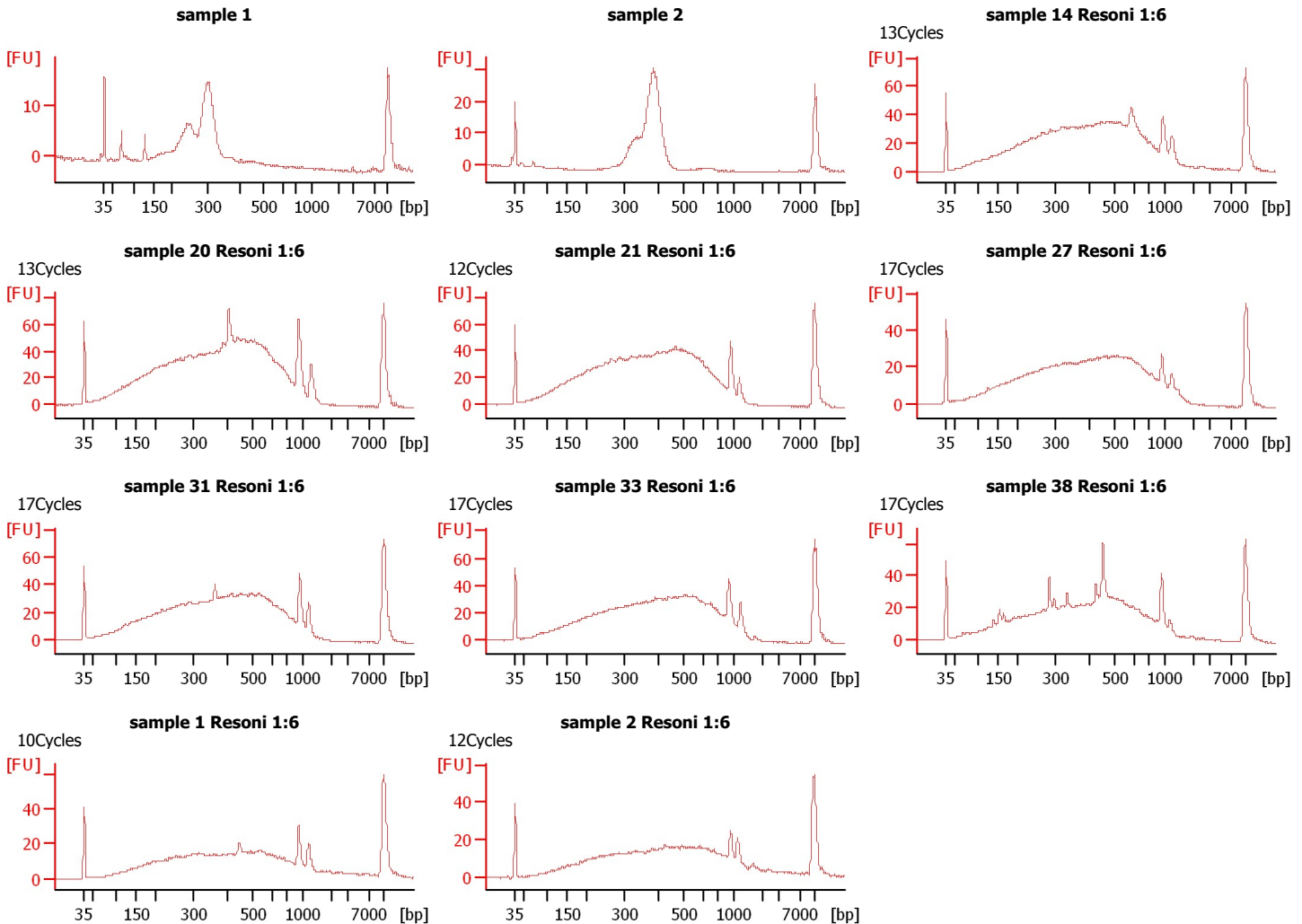
Instrument Name: DE13701086      Firmware: C.01.069  
Serial#: DE13701086      Type: G2938B

#### Assay Information:

Assay Origin Path: C:\Program Files\Agilent\2100 bioanalyzer\2100 expert\assays\dsDNA\High Sensitivity DNA.xsy  
Assay Class: High Sensitivity DNA Assay  
Version: 1.03  
Assay Comments: Copyright © 2003-2010 Agilent Technologies

#### Chip Information:

Chip Lot #:   
Reagent Kit Lot #:   
Chip Comments:



Assay Class: High Sensitivity DNA Assay  
 Data Path: C:\...ents and Settings\Bioanalyzer\2013-04-15\2013-04-15\_002.xad

Created: 4/15/2013 11:21:59 AM  
 Modified: 4/15/2013 12:04:56 PM

**Electrophoresis File Run Summary (Chip Summary)**

Sample Name	Sample Comment	Rest. Digest	Status	Observation	Result Label	Result Color
sample 1		<input type="checkbox"/>	✓			
sample 2		<input type="checkbox"/>	✓			
sample 14 Resoni 1:6	13Cycles	<input type="checkbox"/>	✓			
sample 20 Resoni 1:6	13Cycles	<input type="checkbox"/>	✓			
sample 21 Resoni 1:6	12Cycles	<input type="checkbox"/>	✓			
sample 27 Resoni 1:6	17Cycles	<input type="checkbox"/>	✓			
sample 31 Resoni 1:6	17Cycles	<input type="checkbox"/>	✓			
sample 33 Resoni 1:6	17Cycles	<input type="checkbox"/>	✓			
sample 38 Resoni 1:6	17Cycles	<input type="checkbox"/>	✓			
sample 1 Resoni 1:6	10Cycles	<input type="checkbox"/>	✓			
sample 2 Resoni 1:6	12Cycles	<input type="checkbox"/>	✓			
Ladder		<input type="checkbox"/>	✓			

**Chip Lot #**

**Reagent Kit Lot #**

**Chip Comments :**

Assay Class: High Sensitivity DNA Assay  
Data Path: C:\...ents and Settings\Bioanalyzer\2013-04-15\2013-04-15\_002.xad

Created: 4/15/2013 11:21:59 AM  
Modified: 4/15/2013 12:04:56 PM

**Electrophoresis Assay Details**

**General Analysis Settings**

Number of Available Sample and Ladder Wells (Max.) : 12  
Minimum Visible Range [s] : 32  
Maximum Visible Range [s] : 138  
Start Analysis Time Range [s] : 33  
End Analysis Time Range [s] : 137.5  
Ladder Concentration [pg/μl] : 1950  
Uses Standard Area for Ladder Fragments  
Lower Marker Concentration [pg/μl] : 125  
Upper Marker Concentration [pg/μl] : 75  
Used Upper Marker for Quantitation  
Standard Curve Fit is Point to Point  
Show Data Aligned to Lower and Upper Marker

**Integrator Settings**

Integration Start Time [s] : 33.05  
Integration End Time [s] : 137  
Slope Threshold : 0.8  
Height Threshold [FU] : 5  
Area Threshold : 0.1  
Width Threshold [s] : 0.6  
Baseline Plateau [s] : 0.5

**Filter Settings**

Filter Width [s] : 0.5  
Polynomial Order : 4

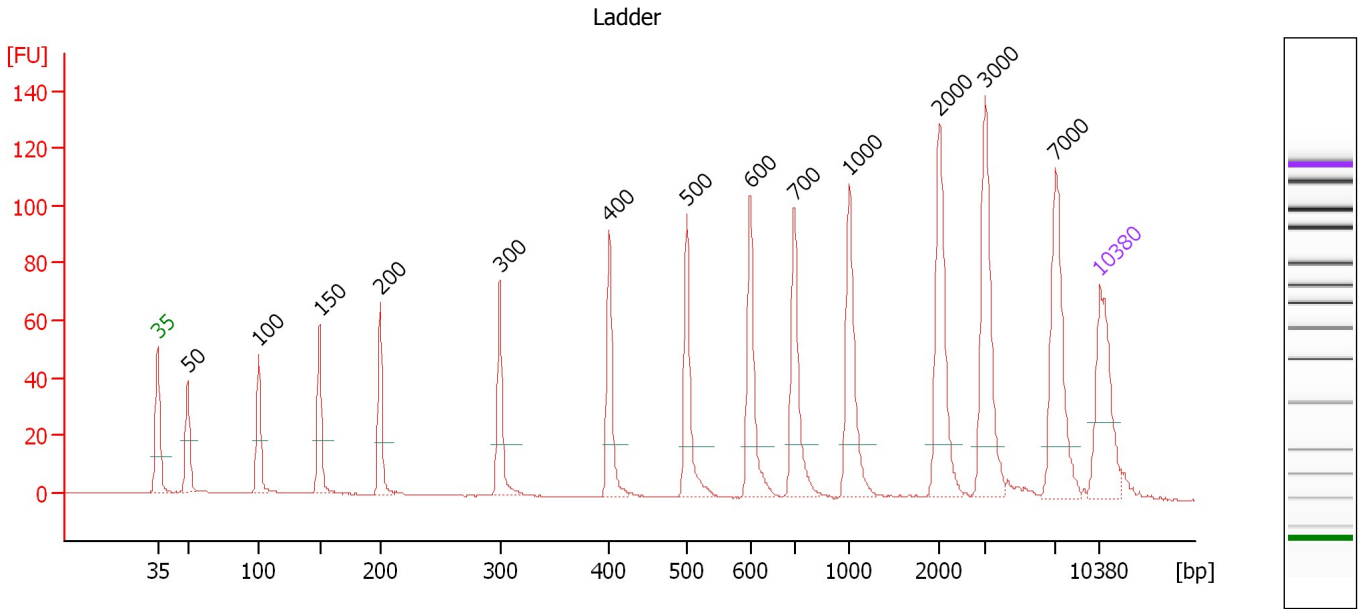
**Ladder**

Ladder Peak	Size	Area
1	35	160
2	50	210
3	100	208
4	150	221
5	200	242
6	300	270
7	400	305
8	500	306
9	600	336
10	700	321
11	1000	366
12	2000	413
13	3000	411
14	7000	400
15	10380	214

Assay Class: High Sensitivity DNA Assay  
 Data Path: C:\...ents and Settings\Bioanalyzer\2013-04-15\2013-04-15\_002.xad

Created: 4/15/2013 11:21:59 AM  
 Modified: 4/15/2013 12:04:56 PM

**Electropherogram Summary**



**Overall Results for Ladder**

Noise: 0.1

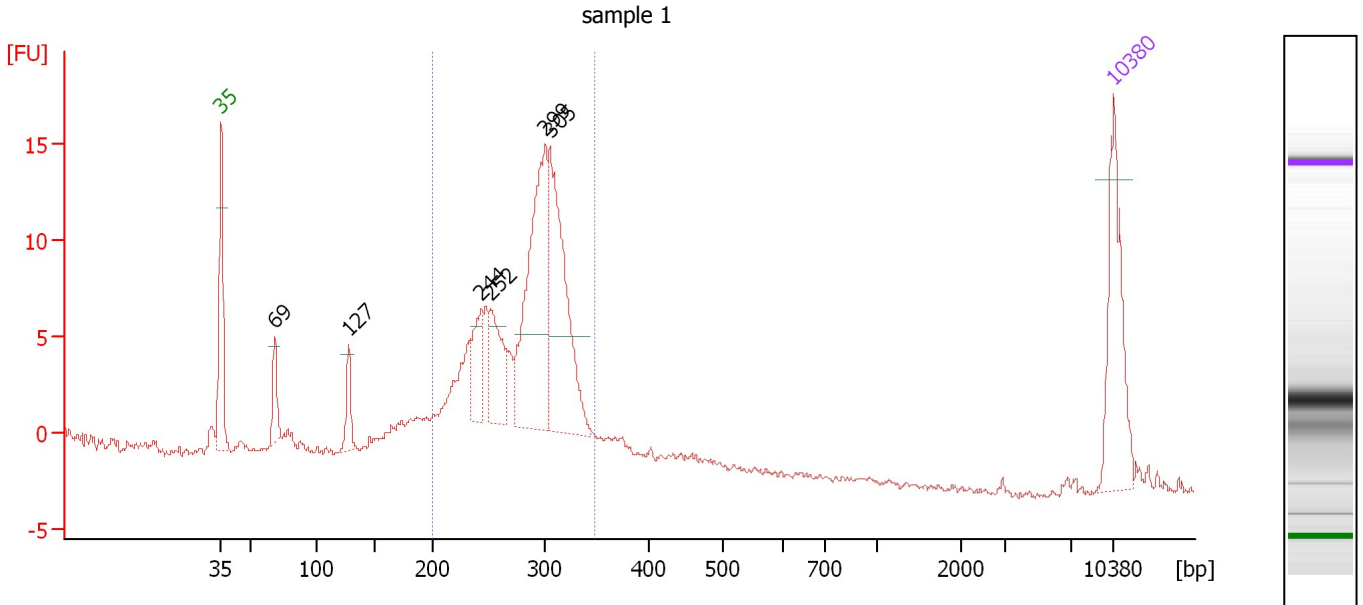
**Peak table for Ladder**

Peak	Size [bp]	Conc. [pg/μl]	Molarity [pmol/l]	Observations
1	35	125.00	5,411.3	Lower Marker
2	50	150.00	4,545.5	Ladder Peak
3	100	150.00	2,272.7	Ladder Peak
4	150	150.00	1,515.2	Ladder Peak
5	200	150.00	1,136.4	Ladder Peak
6	300	150.00	757.6	Ladder Peak
7	400	150.00	568.2	Ladder Peak
8	500	150.00	454.5	Ladder Peak
9	600	150.00	378.8	Ladder Peak
10	700	150.00	324.7	Ladder Peak
11	1,000	150.00	227.3	Ladder Peak
12	2,000	150.00	113.6	Ladder Peak
13	3,000	150.00	75.8	Ladder Peak
14	7,000	150.00	32.5	Ladder Peak
15	10,380	75.00	10.9	Upper Marker

Assay Class: High Sensitivity DNA Assay  
 Data Path: C:\...ents and Settings\Bioanalyzer\2013-04-15\2013-04-15\_002.xad

Created: 4/15/2013 11:21:59 AM  
 Modified: 4/15/2013 12:04:56 PM

**Electropherogram Summary Continued ...**



**Overall Results for sample 1 : sample 1**

Number of peaks found: 6                      Corr. Area 1: 147.9  
 Noise: 0.1

**Peak table for sample 1 : sample 1**

Peak	Size [bp]	Conc. [pg/μl]	Molarity [pmol/l]	Observations
1	35	125.00	5,411.3	Lower Marker
2	69	33.13	728.5	
3	127	29.08	345.9	
4	244	49.30	306.8	
5	252	60.52	363.9	
6	299	212.41	1,074.8	
7	305	184.57	918.2	
8	10,380	75.00	10.9	Upper Marker

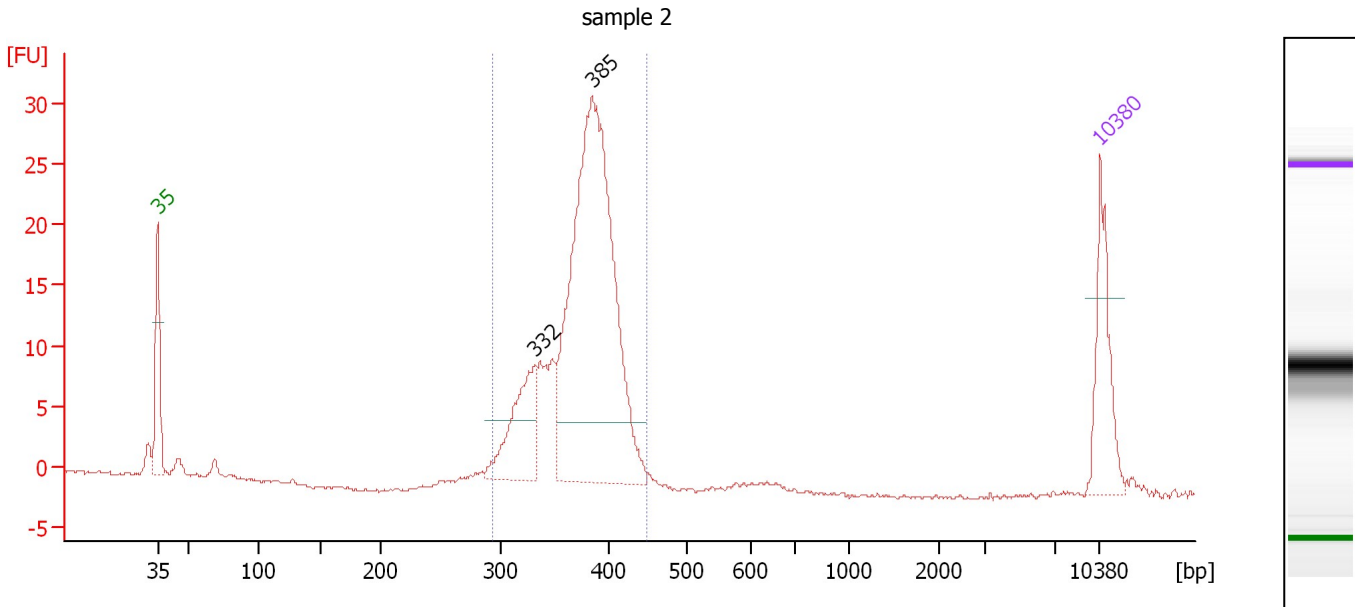
**Region table for sample 1 : sample 1**

From [bp]	To [bp]	Average Size [bp]	Molarity [pmol/l]	Conc. [pg/μl]	Corr. Area	% of Total	Size distribution in CV [%]	Color
200	347	280	4,467.2	816.00	147.9	78	12.2	Blue

Assay Class: High Sensitivity DNA Assay  
 Data Path: C:\...ents and Settings\Bioanalyzer\2013-04-15\2013-04-15\_002.xad

Created: 4/15/2013 11:21:59 AM  
 Modified: 4/15/2013 12:04:56 PM

**Electropherogram Summary Continued ...**



**Overall Results for sample 2 : sample 2**

Number of peaks found: 2                      Corr. Area 1: 206.5  
 Noise: 0.2

**Peak table for sample 2 : sample 2**

Peak	Size [bp]	Conc. [pg/μl]	Molarity [pmol/l]	Observations
1	35	125.00	5,411.3	Lower Marker
2	332	120.81	551.1	
3	385	633.53	2,495.2	
4	10,380	75.00	10.9	Upper Marker

**Region table for sample 2 : sample 2**

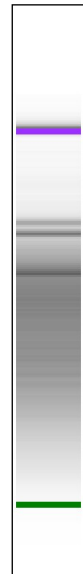
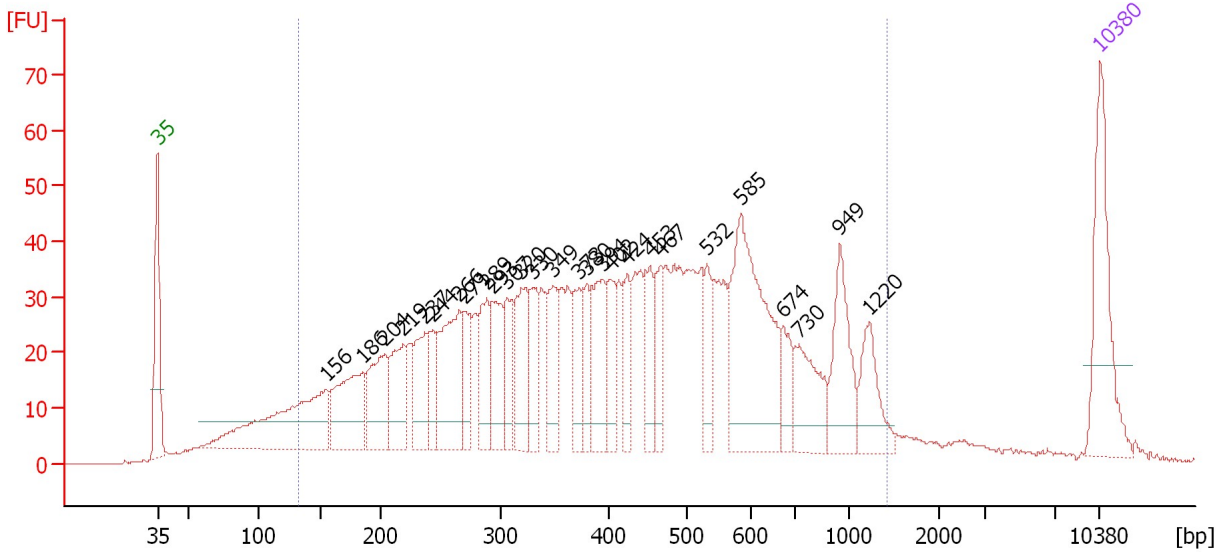
From [bp]	To [bp]	Average Size [bp]	Molarity [pmol/l]	Conc. [pg/μl]	Corr. Area	% of Total	Size distribution in CV [%]	Color
293	449	374	3,395.9	834.88	206.5	96	8.0	Blue

Assay Class: High Sensitivity DNA Assay  
 Data Path: C:\...ents and Settings\Bioanalyzer\2013-04-15\2013-04-15\_002.xad

Created: 4/15/2013 11:21:59 AM  
 Modified: 4/15/2013 12:04:56 PM

**Electropherogram Summary Continued ...**

sample 14 Resoni 1:6 [ 13Cycles ]



**Overall Results for sample 3 : sample 14 Resoni 1:6**

Number of peaks found: 27                      Corr. Area 1: 1,602.1  
 Noise: 0.2

**Peak table for sample 3 : sample 14 Resoni 1:6**

Peak	Size [bp]	Conc. [pg/µl]	Molarity [pmol/l]	Observations
1	35	125.00	5,411.3	Lower Marker
2	156	179.57	1,748.7	
3	186	98.55	804.1	
4	204	75.62	561.7	
5	219	62.40	430.8	
6	237	59.84	381.9	
7	244	32.25	200.0	
8	266	108.96	620.0	
9	271	35.00	195.8	
10	289	51.77	271.2	
11	293	60.14	310.8	
12	307	40.35	199.3	
13	320	65.84	311.9	
14	330	41.00	188.4	
15	349	52.36	227.4	
16	373	41.88	170.1	
17	380	32.15	128.3	
18	394	58.89	226.3	
19	402	36.68	138.2	
20	424	34.03	121.7	
21	453	42.37	141.7	
22	467	34.76	112.8	
23	532	33.99	96.8	
24	585	177.25	459.1	
25	674	28.25	63.5	
26	730	57.84	120.1	

Assay Class: High Sensitivity DNA Assay  
 Data Path: C:\...ents and Settings\Bioanalyzer\2013-04-15\2013-04-15\_002.xad


Created: 4/15/2013 11:21:59 AM  
 Modified: 4/15/2013 12:04:56 PM

### Electropherogram Summary Continued ...

#### ... Peak table for sample 3 : sample 14 Resoni 1:6

Peak	Size [bp]	Conc. [pg/μl]	Molarity [pmol/l]	Observations
27	949	62.95	100.5	
28	1,220	41.28	51.3	
29	10,380	75.00	10.9	Upper Marker

#### Region table for sample 3 : sample 14 Resoni 1:6

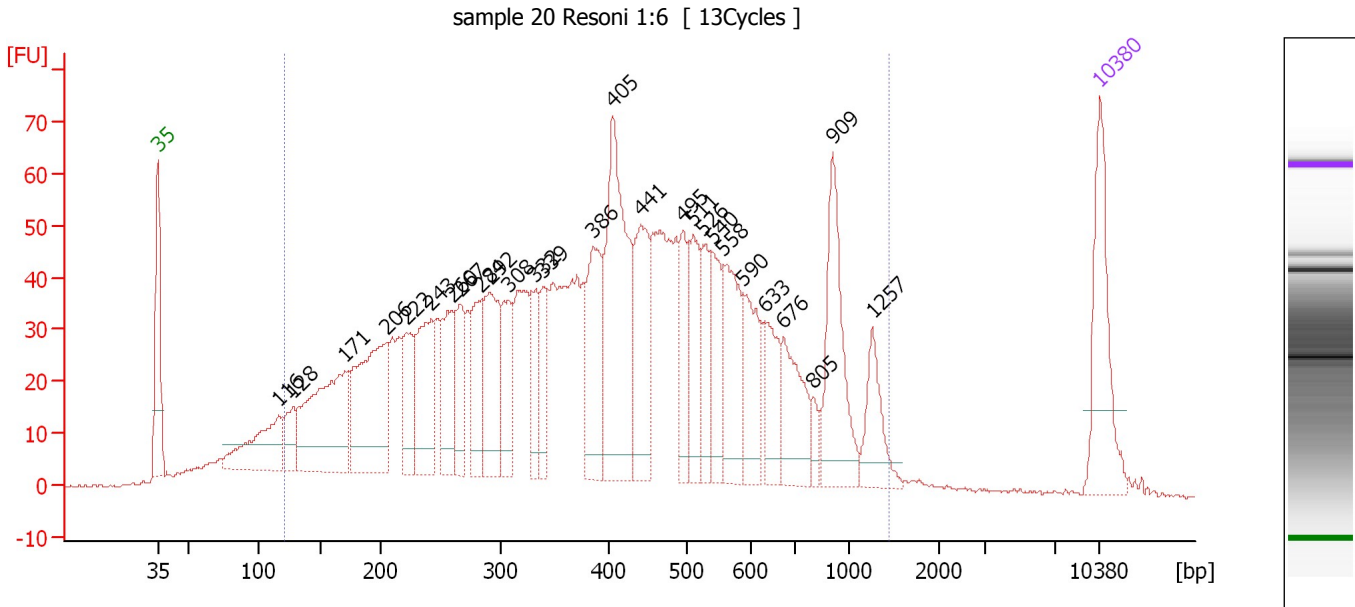
From [bp]	To [bp]	Average Size [bp]	Molarity [pmol/l]	Conc. [pg/μl]	Corr. Area	% of Total	Size distribution in CV [%]	Color
133	1,415	463	10,577.0	2,260.10	1,602.1	90	52.0	



Assay Class: High Sensitivity DNA Assay  
 Data Path: C:\...ents and Settings\Bioanalyzer\2013-04-15\2013-04-15\_002.xad

Created: 4/15/2013 11:21:59 AM  
 Modified: 4/15/2013 12:04:56 PM

**Electropherogram Summary Continued ...**



**Overall Results for sample 4 : sample 20 Resoni 1:6**

Number of peaks found: 27                      Corr. Area 1: 2,155.5  
 Noise: 0.3

**Peak table for sample 4 : sample 20 Resoni 1:6**

Peak	Size [bp]	Conc. [pg/μl]	Molarity [pmol/l]	Observations
1	35	125.00	5,411.3	Lower Marker
2	116	96.00	1,249.4	
3	128	36.02	424.8	
4	171	183.84	1,631.2	
5	206	174.35	1,284.0	
6	222	57.22	390.4	
7	243	102.47	640.2	
8	260	82.78	482.6	
9	267	54.32	308.8	
10	284	63.73	339.5	
11	292	105.44	547.0	
12	308	57.65	283.5	
13	332	45.03	205.4	
14	339	41.79	186.8	
15	386	97.73	384.0	
16	405	204.19	763.9	
17	441	99.34	341.0	
18	495	50.40	154.2	
19	511	64.41	190.9	
20	526	43.21	124.5	
21	540	54.62	153.2	
22	558	82.55	224.0	
23	590	59.21	152.1	
24	633	48.84	117.0	
25	676	69.64	156.2	
26	805	11.88	22.3	

Assay Class: High Sensitivity DNA Assay  
 Data Path: C:\...ents and Settings\Bioanalyzer\2013-04-15\2013-04-15\_002.xad

Created: 4/15/2013 11:21:59 AM  
 Modified: 4/15/2013 12:04:56 PM

### Electropherogram Summary Continued ...

#### ... Peak table for sample 4 : sample 20 Resoni 1:6

Peak	Size [bp]	Conc. [pg/μl]	Molarity [pmol/l]	Observations
27	909	102.52	170.8	
28	1,257	43.05	51.9	
29	10,380	75.00	10.9	Upper Marker

#### Region table for sample 4 : sample 20 Resoni 1:6

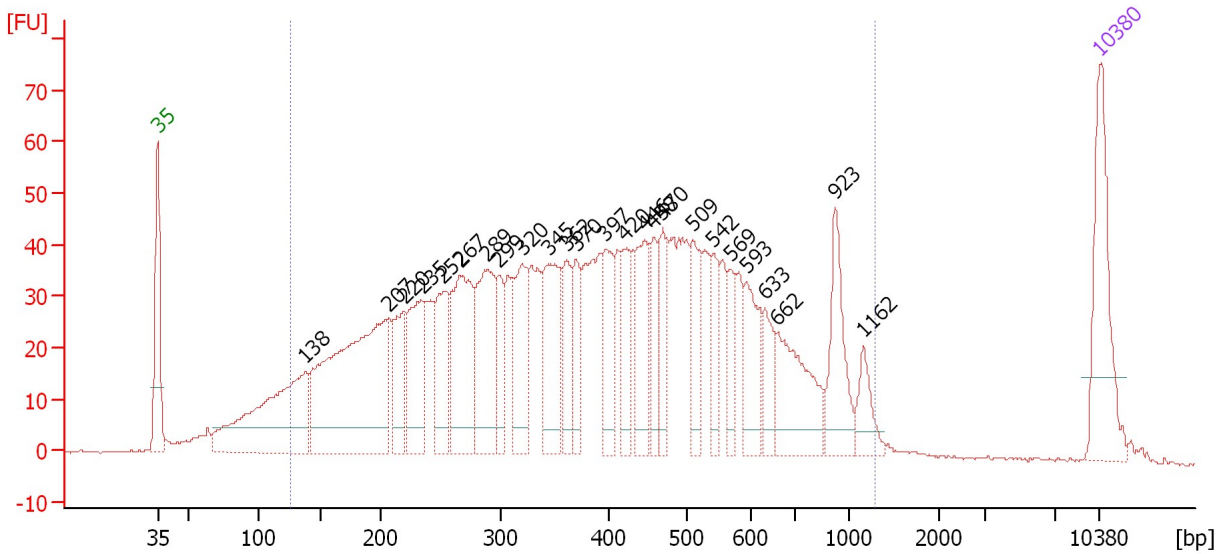
From [bp]	To [bp]	Average Size [bp]	Molarity [pmol/l]	Conc. [pg/μl]	Corr. Area	% of Total	Size distribution in CV [%]	Color
121	1,437	448	14,225.0	2,889.50	2,155.5	93	52.6	

Assay Class: High Sensitivity DNA Assay  
 Data Path: C:\...ents and Settings\Bioanalyzer\2013-04-15\2013-04-15\_002.xad

Created: 4/15/2013 11:21:59 AM  
 Modified: 4/15/2013 12:04:56 PM

**Electropherogram Summary Continued ...**

sample 21 Resoni 1:6 [ 12Cycles ]



**Overall Results for sample 5 : sample 21 Resoni 1:6**

Number of peaks found: 25                      Corr. Area 1: 1,884.3  
 Noise: 0.3

**Peak table for sample 5 : sample 21 Resoni 1:6**

Peak	Size [bp]	Conc. [pg/μl]	Molarity [pmol/l]	Observations
1	35	125.00	5,411.3	Lower Marker
2	138	213.16	2,337.4	
3	207	314.27	2,303.8	
4	220	54.87	378.4	
5	235	98.20	633.7	
6	252	71.58	429.6	
7	267	131.04	743.5	
8	289	112.75	591.3	
9	299	44.74	226.5	
10	320	82.55	390.4	
11	345	94.85	416.6	
12	362	47.75	200.1	
13	370	41.02	168.2	
14	397	52.74	201.3	
15	420	43.52	157.0	
16	446	60.87	206.6	
17	458	38.20	126.4	
18	470	41.79	134.8	
19	509	46.55	138.5	
20	542	36.84	103.1	
21	569	28.63	76.3	
22	593	53.23	136.0	
23	633	29.41	70.4	
24	662	83.60	191.2	
25	923	61.83	101.5	
26	1,162	25.07	32.7	

Assay Class: High Sensitivity DNA Assay  
Data Path: C:\...ents and Settings\Bioanalyzer\2013-04-15\2013-04-15\_002.xad

Created: 4/15/2013 11:21:59 AM  
Modified: 4/15/2013 12:04:56 PM

**Electropherogram Summary Continued ...****... Peak table for sample 5 : sample 21 Resoni 1:6**

Peak	Size [bp]	Conc. [pg/ $\mu$ l]	Molarity [pmol/l]	Observations
27	10,380	75.00	10.9	Upper Marker

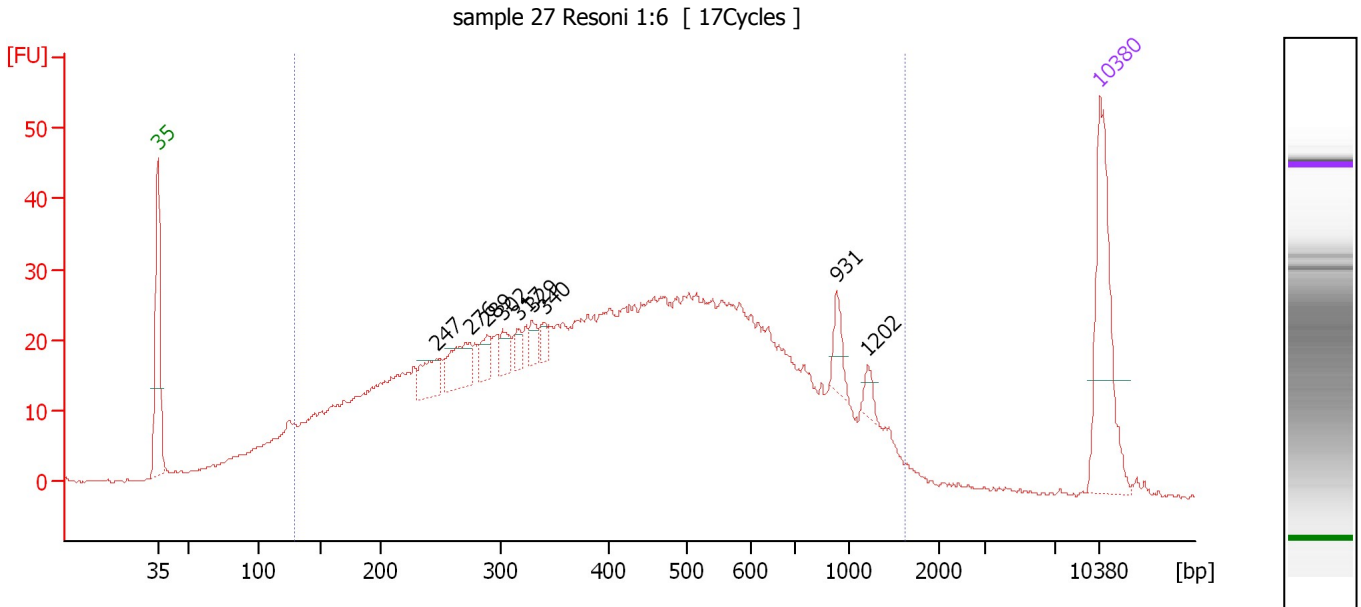
**Region table for sample 5 : sample 21 Resoni 1:6**

From [bp]	To [bp]	Average Size [bp]	Molarity [pmol/l]	Conc. [pg/ $\mu$ l]	Corr. Area	% of Total	Size distribution in CV [%]	Color
125	1,291	428	12,125.1	2,423.01	1,884.3	92	49.5	

Assay Class: High Sensitivity DNA Assay  
 Data Path: C:\...ents and Settings\Bioanalyzer\2013-04-15\2013-04-15\_002.xad

Created: 4/15/2013 11:21:59 AM  
 Modified: 4/15/2013 12:04:56 PM

**Electropherogram Summary Continued ...**



**Overall Results for sample 6 : sample 27 Resoni 1:6**

Number of peaks found: 9                      Corr. Area 1: 1,216.1  
 Noise: 0.3

**Peak table for sample 6 : sample 27 Resoni 1:6**

Peak	Size [bp]	Conc. [pg/μl]	Molarity [pmol/l]	Observations
1	35	125.00	5,411.3	Lower Marker
2	247	26.82	164.3	
3	276	35.65	195.9	
4	289	14.97	78.4	
5	302	13.49	67.6	
6	317	8.86	42.3	
7	329	10.60	48.8	
8	340	8.14	36.2	
9	931	15.89	25.9	
10	1,202	7.72	9.7	
11	10,380	75.00	10.9	Upper Marker

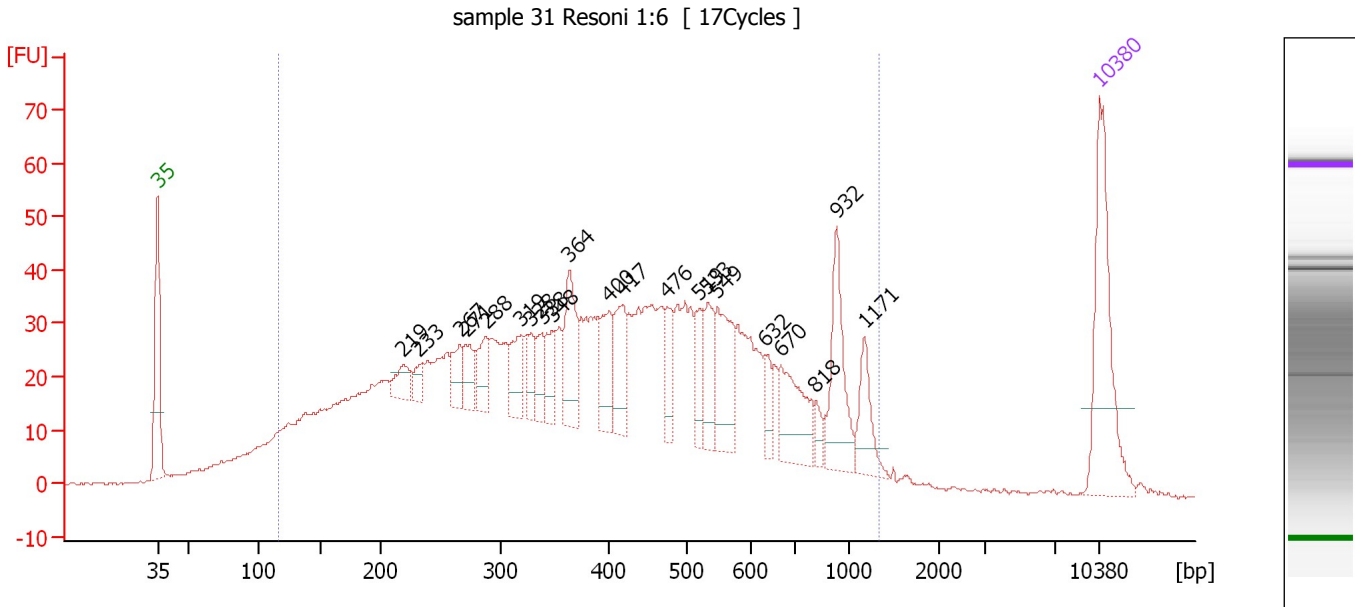
**Region table for sample 6 : sample 27 Resoni 1:6**

From [bp]	To [bp]	Average Size [bp]	Molarity [pmol/l]	Conc. [pg/μl]	Corr. Area	% of Total	Size distribution in CV [%]	Color
129	1,623	473	10,138.9	2,149.43	1,216.1	92	55.2	Blue

Assay Class: High Sensitivity DNA Assay  
 Data Path: C:\...ents and Settings\Bioanalyzer\2013-04-15\2013-04-15\_002.xad

Created: 4/15/2013 11:21:59 AM  
 Modified: 4/15/2013 12:04:56 PM

**Electropherogram Summary Continued ...**



**Overall Results for sample 7 : sample 31 Resoni 1:6**

Number of peaks found: 21                      Corr. Area 1: 1,577.1  
 Noise: 0.2

**Peak table for sample 7 : sample 31 Resoni 1:6**

Peak	Size [bp]	Conc. [pg/μl]	Molarity [pmol/l]	Observations
1	35	125.00	5,411.3	Lower Marker
2	219	20.04	138.5	
3	233	12.12	78.8	
4	267	21.78	123.7	
5	271	21.24	118.6	
6	288	27.45	144.2	
7	319	30.39	144.3	
8	328	21.90	101.2	
9	338	20.22	90.6	
10	348	22.20	96.8	
11	364	49.93	207.9	
12	400	37.57	142.4	
13	417	39.54	143.7	
14	476	23.83	75.9	
15	519	23.22	67.8	
16	533	30.71	87.3	
17	549	51.87	143.2	
18	632	16.25	38.9	
19	670	50.00	113.1	
20	818	8.30	15.4	
21	932	55.07	89.5	
22	1,171	27.49	35.6	
23	10,380	75.00	10.9	Upper Marker

Assay Class: High Sensitivity DNA Assay  
Data Path: C:\...ents and Settings\Bioanalyzer\2013-04-15\2013-04-15\_002.xad

Created: 4/15/2013 11:21:59 AM  
Modified: 4/15/2013 12:04:56 PM

**Electropherogram Summary Continued ...**

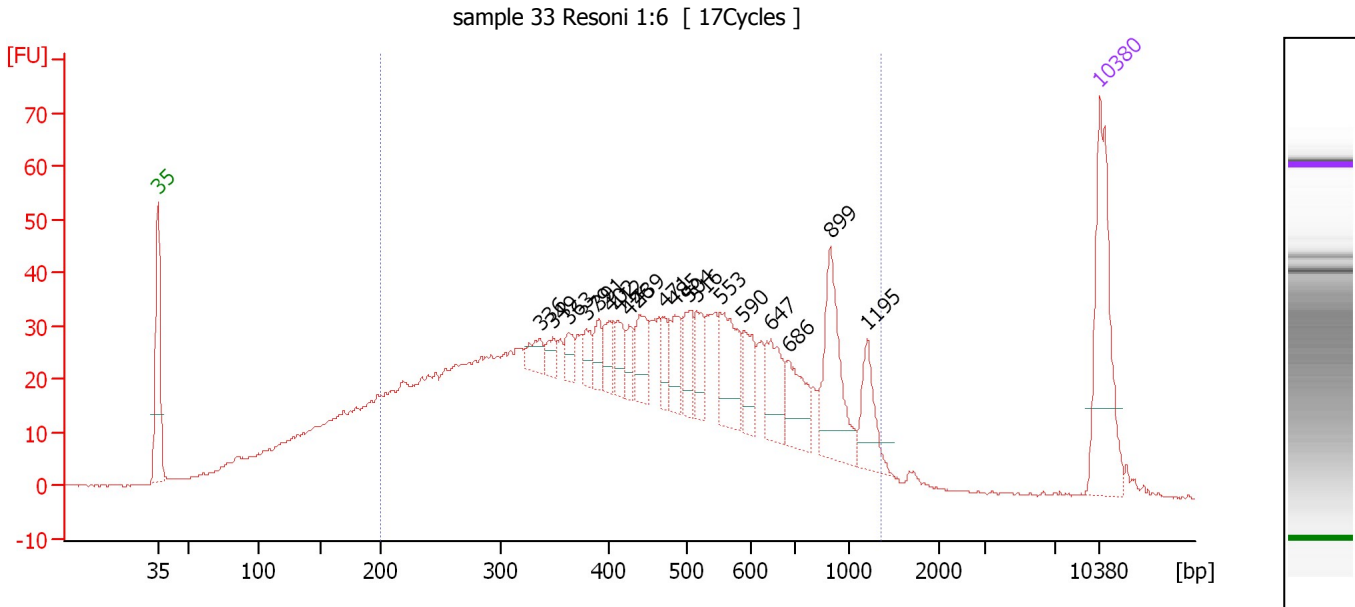
... Region table for sample 7 : sample 31 Resoni 1:6

From [bp]	To [bp]	Average Size [bp]	Molarity [pmol/l]	Conc. [pg/μl]	Corr. Area	% of Total	Size distribution in CV [%]	Color
116	1,323	446	10,493.2	2,099.61	1,577.1	93	51.8	■

Assay Class: High Sensitivity DNA Assay  
 Data Path: C:\...ents and Settings\Bioanalyzer\2013-04-15\2013-04-15\_002.xad

Created: 4/15/2013 11:21:59 AM  
 Modified: 4/15/2013 12:04:56 PM

**Electropherogram Summary Continued ...**



**Overall Results for sample 8 : sample 33 Resoni 1:6**

Number of peaks found: 19                      Corr. Area 1: 1,321.0  
 Noise: 0.2

**Peak table for sample 8 : sample 33 Resoni 1:6**

Peak	Size [bp]	Conc. [pg/μl]	Molarity [pmol/l]	Observations
1	35	125.00	5,411.3	Lower Marker
2	336	14.29	64.4	
3	349	11.03	47.9	
4	363	12.41	51.8	
5	379	13.54	54.1	
6	391	14.63	56.8	
7	402	16.53	62.3	
8	412	16.90	62.1	
9	426	13.42	47.7	
10	439	27.53	95.0	
11	471	17.76	57.1	
12	485	24.93	77.9	
13	504	24.00	72.2	
14	516	21.19	62.2	
15	553	44.46	121.8	
16	590	25.81	66.3	
17	647	35.06	82.1	
18	686	35.12	77.6	
19	899	65.97	111.2	
20	1,195	28.61	36.3	
21	10,380	75.00	10.9	Upper Marker

**Region table for sample 8 : sample 33 Resoni 1:6**

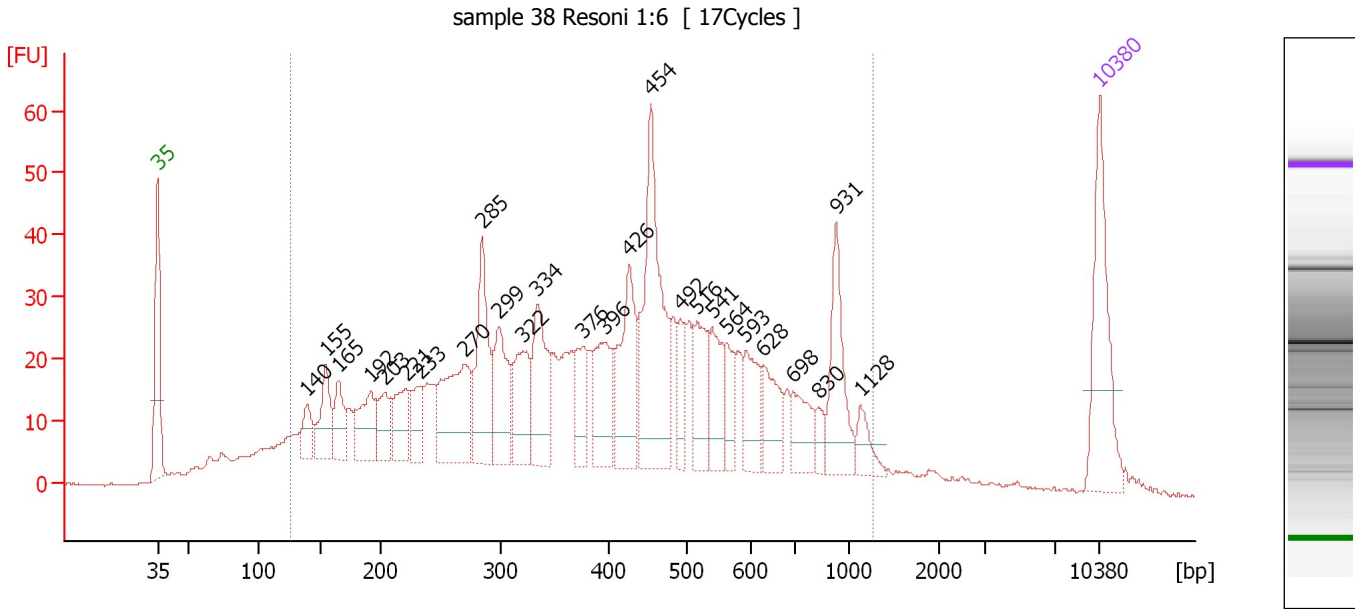
From [bp]	To [bp]	Average Size [bp]	Molarity [pmol/l]	Conc. [pg/μl]	Corr. Area	% of Total	Size distribution in CV [%]	Color
200	1,358	494	6,854.8	1,715.76	1,321.0	82	47.0	Blue



Assay Class: High Sensitivity DNA Assay  
 Data Path: C:\...ents and Settings\Bioanalyzer\2013-04-15\2013-04-15\_002.xad

Created: 4/15/2013 11:21:59 AM  
 Modified: 4/15/2013 12:04:56 PM

**Electropherogram Summary Continued ...**



**Overall Results for sample 9 : sample 38 Resoni 1:6**

Number of peaks found: 26                      Corr. Area 1: 1,228.7  
 Noise: 0.2

**Peak table for sample 9 : sample 38 Resoni 1:6**

Peak	Size [bp]	Conc. [pg/μl]	Molarity [pmol/l]	Observations
1	35	125.00	5,411.3	Lower Marker
2	140	27.61	299.5	
3	155	50.08	490.0	
4	165	38.65	354.1	
5	192	50.73	399.9	
6	203	34.38	256.2	
7	221	41.98	287.4	
8	233	31.52	204.9	
9	270	101.64	571.1	
10	285	93.49	496.9	
11	299	66.00	334.5	
12	322	60.50	285.1	
13	334	74.80	338.9	
14	376	37.56	151.4	
15	396	60.35	230.8	
16	426	83.97	298.7	
17	454	161.68	539.7	
18	492	28.43	87.6	
19	516	49.16	144.4	
20	541	42.30	118.5	
21	564	24.46	65.7	
22	593	38.85	99.3	
23	628	40.03	96.5	
24	698	34.53	75.0	
25	830	11.29	20.6	
26	931	63.43	103.2	

Assay Class: High Sensitivity DNA Assay  
 Data Path: C:\...ents and Settings\Bioanalyzer\2013-04-15\2013-04-15\_002.xad


Created: 4/15/2013 11:21:59 AM  
 Modified: 4/15/2013 12:04:56 PM

### Electropherogram Summary Continued ...

#### ... Peak table for sample 9 : sample 38 Resoni 1:6

Peak	Size [bp]	Conc. [pg/μl]	Molarity [pmol/l]	Observations
27	1,128	17.50	23.5	
28	10,380	75.00	10.9	Upper Marker

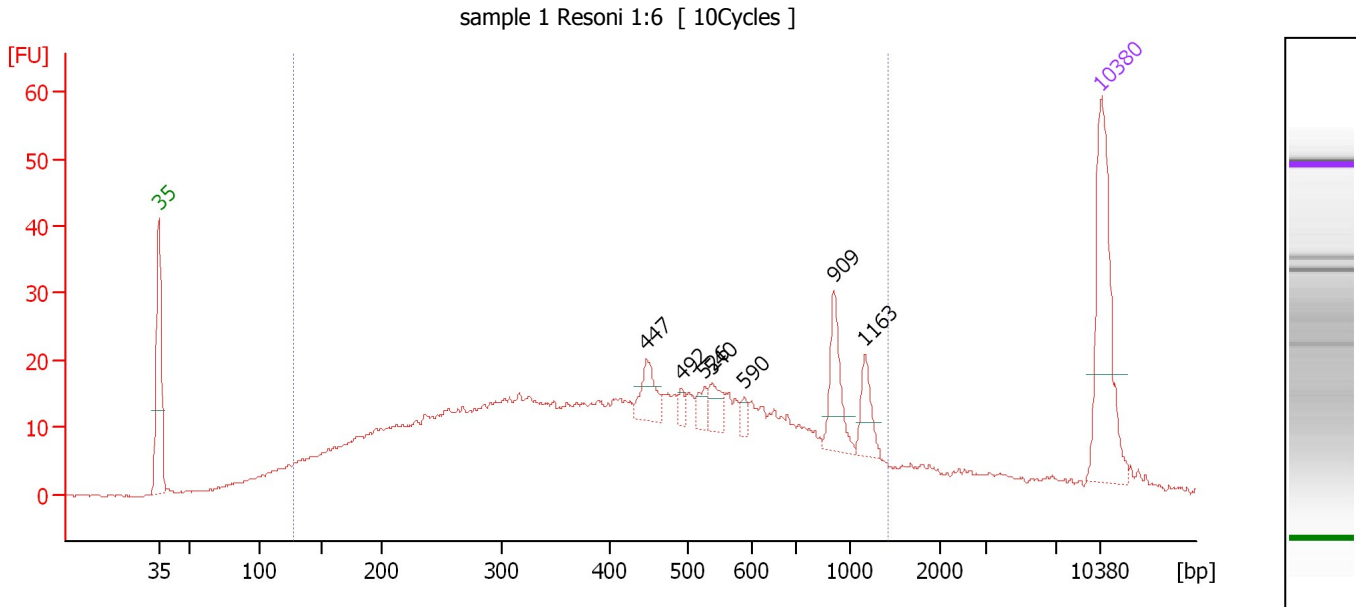
#### Region table for sample 9 : sample 38 Resoni 1:6

From [bp]	To [bp]	Average Size [bp]	Molarity [pmol/l]	Conc. [pg/μl]	Corr. Area	% of Total	Size distribution in CV [%]	Color
127	1,264	443	10,167.9	2,080.92	1,228.7	90	49.1	

Assay Class: High Sensitivity DNA Assay  
 Data Path: C:\...ents and Settings\Bioanalyzer\2013-04-15\2013-04-15\_002.xad

Created: 4/15/2013 11:21:59 AM  
 Modified: 4/15/2013 12:04:56 PM

**Electropherogram Summary Continued ...**



**Overall Results for sample 10 : sample 1 Resoni 1:6**

Number of peaks found: 7                      Corr. Area 1: 745.8  
 Noise: 0.2

**Peak table for sample 10 : sample 1 Resoni 1:6**

Peak	Size [bp]	Conc. [pg/μl]	Molarity [pmol/l]	Observations
1	35	125.00	5,411.3	Lower Marker
2	447	23.30	78.9	
3	492	6.22	19.1	
4	526	9.93	28.6	
5	540	13.31	37.4	
6	590	5.79	14.9	
7	909	33.40	55.7	
8	1,163	19.22	25.0	
9	10,380	75.00	10.9	Upper Marker

**Region table for sample 10 : sample 1 Resoni 1:6**

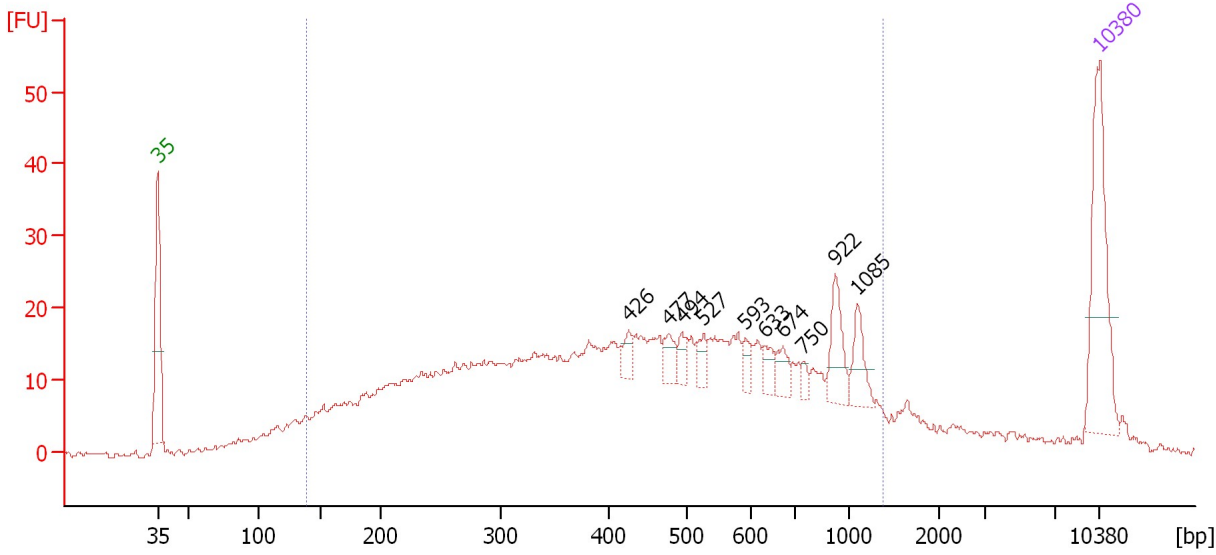
From [bp]	To [bp]	Average Size [bp]	Molarity [pmol/l]	Conc. [pg/μl]	Corr. Area	% of Total	Size distribution in CV [%]	Color
128	1,418	478	6,195.8	1,304.30	745.8	89	55.1	Blue

Assay Class: High Sensitivity DNA Assay  
 Data Path: C:\...ents and Settings\Bioanalyzer\2013-04-15\2013-04-15\_002.xad

Created: 4/15/2013 11:21:59 AM  
 Modified: 4/15/2013 12:04:56 PM

**Electropherogram Summary Continued ...**

sample 2 Resoni 1:6 [ 12Cycles ]



**Overall Results for sample 11 : sample 2 Resoni 1:6**

Number of peaks found: 10                      Corr. Area 1: 737.8  
 Noise: 0.5

**Peak table for sample 11 : sample 2 Resoni 1:6**

Peak	Size [bp]	Conc. [pg/μl]	Molarity [pmol/l]	Observations
1	35	125.00	5,411.3	Lower Marker
2	426	12.93	46.0	
3	477	14.52	46.2	
4	494	12.28	37.6	
5	527	12.55	36.1	
6	593	8.74	22.4	
7	633	11.59	27.7	
8	674	13.50	30.4	
9	750	5.43	11.0	
10	922	30.08	49.4	
11	1,085	21.09	29.4	
12	10,380	75.00	10.9	Upper Marker

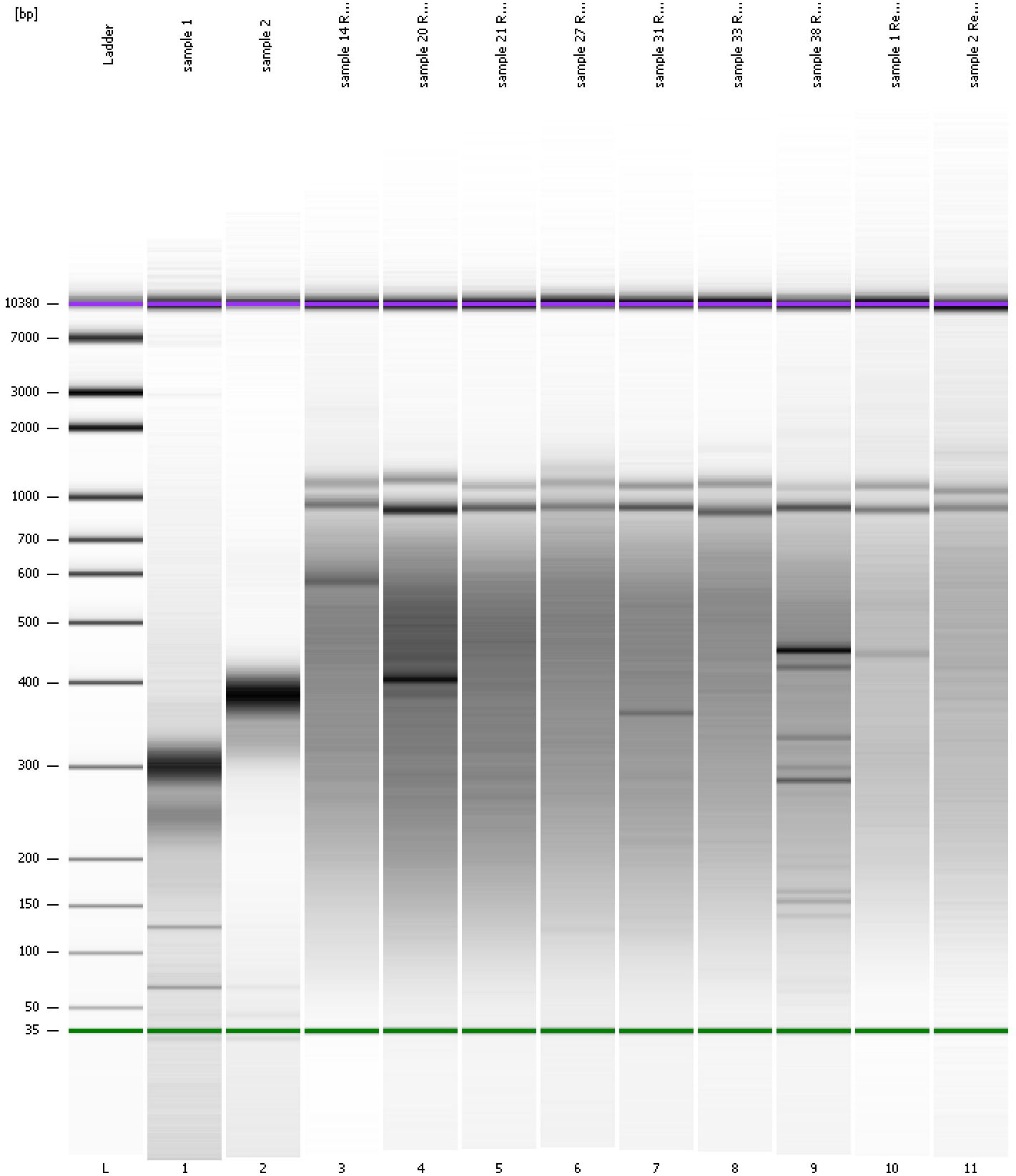
**Region table for sample 11 : sample 2 Resoni 1:6**

From [bp]	To [bp]	Average Size [bp]	Molarity [pmol/l]	Conc. [pg/μl]	Corr. Area	% of Total	Size distribution in CV [%]	Color
140	1,375	491	6,528.0	1,456.34	737.8	87	52.0	Blue

Assay Class: High Sensitivity DNA Assay  
Data Path: C:\...ents and Settings\Bioanalyzer\2013-04-15\2013-04-15\_002.xad

Created: 4/15/2013 11:21:59 AM  
Modified: 4/15/2013 12:04:56 PM

**Gel Image**



Assay Class: High Sensitivity DNA Assay  
 Data Path: C:\...ents and Settings\Bioanalyzer\2013-04-15\2013-04-15\_002.xad

Created: 4/15/2013 11:21:59 AM  
 Modified: 4/15/2013 12:04:56 PM

**Run Logbook**

Description	Number	Source	Category	Sub Category	Time	Time Zone	User	Host
Run ended on port 1 (Number of wells acquired: 12)		Instrument	Run		4/15/2013 12:03:16 PM	(GMT --07:00) Pacific Standard Time	UC Davis	D8XSMGH1
Run started on port 1 (File: C:\Documents and Settings\Bioanalyzer\2013-04-15\2013-04-15_002.xad)		Instrument	Run		4/15/2013 11:22:04 AM	(GMT --07:00) Pacific Standard Time	UC Davis	D8XSMGH1
Product Number : G2938B		Instrument	Run		4/15/2013 11:22:04 AM	(GMT --07:00) Pacific Standard Time	UC Davis	D8XSMGH1
Name :		Instrument	Run		4/15/2013 11:22:04 AM	(GMT --07:00) Pacific Standard Time	UC Davis	D8XSMGH1
Vendor : Agilent Technologies		Instrument	Run		4/15/2013 11:22:04 AM	(GMT --07:00) Pacific Standard Time	UC Davis	D8XSMGH1
Serial# : DE13701086		Instrument	Run		4/15/2013 11:22:04 AM	(GMT --07:00) Pacific Standard Time	UC Davis	D8XSMGH1
Firmware : C.01.069		Instrument	Run		4/15/2013 11:22:04 AM	(GMT --07:00) Pacific Standard Time	UC Davis	D8XSMGH1
Cartridge : Electrode		Instrument	Run		4/15/2013 11:22:04 AM	(GMT --07:00) Pacific Standard Time	UC Davis	D8XSMGH1