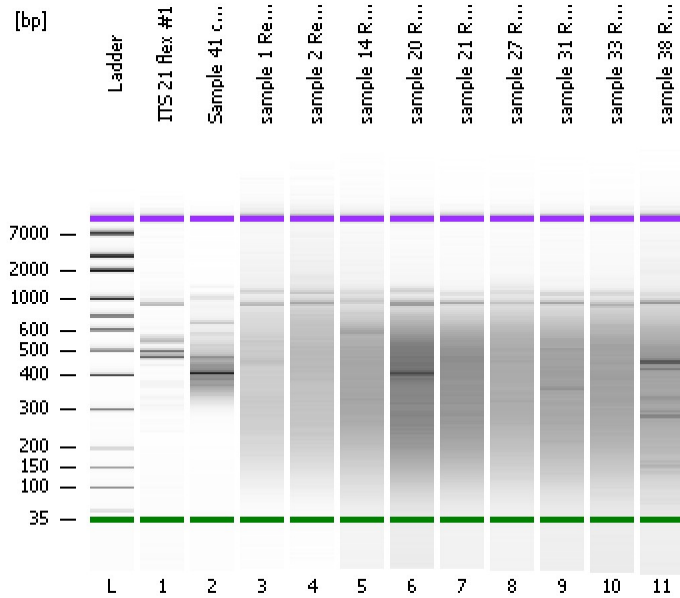


Assay Class: High Sensitivity DNA Assay
Data Path: C:\...ents and Settings\Bioanalyzer\2013-04-16\2013-04-16_001.xad

Created: 4/16/2013 10:17:32 AM
Modified: 4/16/2013 11:02:07 AM

Electrophoresis File Run Summary



Instrument Information:

Instrument Name: DE13701086 Firmware: C.01.069
Serial#: DE13701086 Type: G2938B

Assay Information:

Assay Origin Path: C:\Program Files\Agilent\2100 bioanalyzer\2100 expert\assays\dsDNA\High Sensitivity DNA.xsy

Assay Class: High Sensitivity DNA Assay
Version: 1.03
Assay Comments: Copyright © 2003-2010 Agilent Technologies

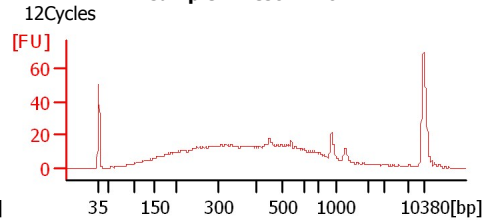
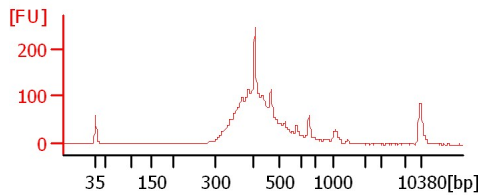
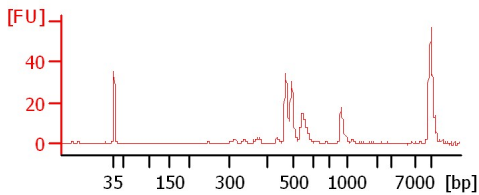
Chip Information:

Chip Lot #:
Reagent Kit Lot #:
Chip Comments:

ITS 21 flex #1

Sample 41 cDNA Lib 1:5

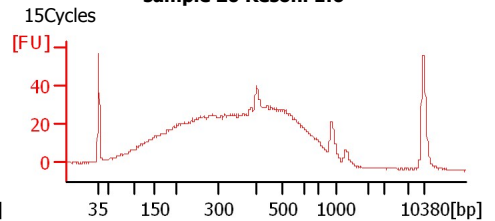
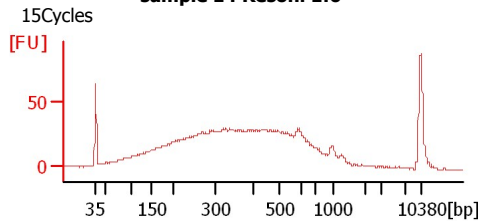
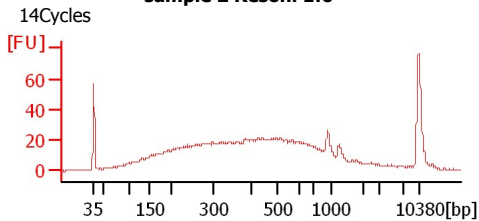
sample 1 Resoni 1:6



sample 2 Resoni 1:6

sample 14 Resoni 1:6

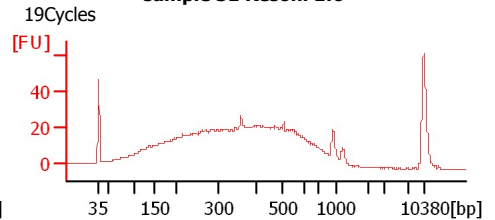
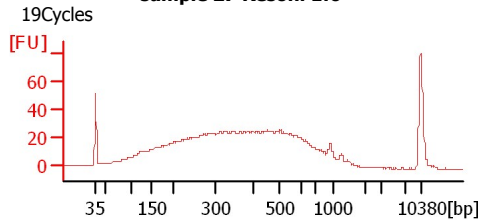
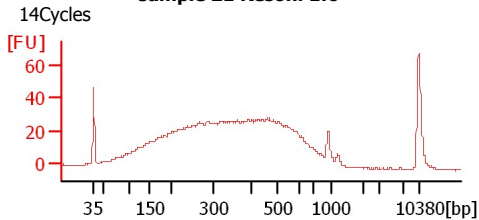
sample 20 Resoni 1:6



sample 21 Resoni 1:6

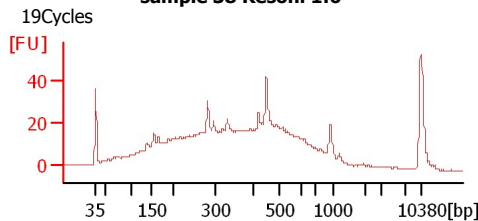
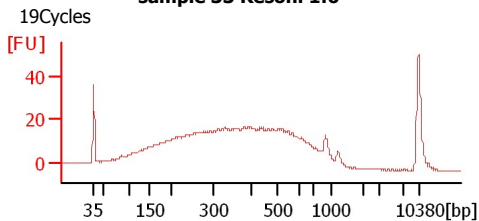
sample 27 Resoni 1:6

sample 31 Resoni 1:6



sample 33 Resoni 1:6

sample 38 Resoni 1:6



Assay Class: High Sensitivity DNA Assay
 Data Path: C:\...ents and Settings\Bioanalyzer\2013-04-16\2013-04-16_001.xad

Created: 4/16/2013 10:17:32 AM
 Modified: 4/16/2013 11:02:07 AM

Electrophoresis File Run Summary (Chip Summary)

Sample Name	Sample Comment	Rest. Digest	Status	Observation	Result Label	Result Color
ITS 21 flex #1		<input type="checkbox"/>	✓			
Sample 41 cDNA Lib 1:5		<input type="checkbox"/>	✓			
sample 1 Resoni 1:6	12Cycles	<input type="checkbox"/>	✓			
sample 2 Resoni 1:6	14Cycles	<input type="checkbox"/>	✓			
sample 14 Resoni 1:6	15Cycles	<input type="checkbox"/>	✓			
sample 20 Resoni 1:6	15Cycles	<input type="checkbox"/>	✓			
sample 21 Resoni 1:6	14Cycles	<input type="checkbox"/>	✓			
sample 27 Resoni 1:6	19Cycles	<input type="checkbox"/>	✓			
sample 31 Resoni 1:6	19Cycles	<input type="checkbox"/>	✓			
sample 33 Resoni 1:6	19Cycles	<input type="checkbox"/>	✓			
sample 38 Resoni 1:6	19Cycles	<input type="checkbox"/>	✓			
Ladder		<input type="checkbox"/>	✓			

Chip Lot #

Reagent Kit Lot #

Chip Comments :

Assay Class: High Sensitivity DNA Assay
Data Path: C:\...ents and Settings\Bioanalyzer\2013-04-16\2013-04-16_001.xad

Created: 4/16/2013 10:17:32 AM
Modified: 4/16/2013 11:02:07 AM

Electrophoresis Assay Details

General Analysis Settings

Number of Available Sample and Ladder Wells (Max.) : 12
Minimum Visible Range [s] : 32
Maximum Visible Range [s] : 138
Start Analysis Time Range [s] : 33
End Analysis Time Range [s] : 137.5
Ladder Concentration [pg/μl] : 1950
Uses Standard Area for Ladder Fragments
Lower Marker Concentration [pg/μl] : 125
Upper Marker Concentration [pg/μl] : 75
Used Upper Marker for Quantitation
Standard Curve Fit is Point to Point
Show Data Aligned to Lower and Upper Marker

Integrator Settings

Integration Start Time [s] : 33.05
Integration End Time [s] : 137
Slope Threshold : 0.8
Height Threshold [FU] : 5
Area Threshold : 0.1
Width Threshold [s] : 0.6
Baseline Plateau [s] : 0.5

Filter Settings

Filter Width [s] : 0.5
Polynomial Order : 4

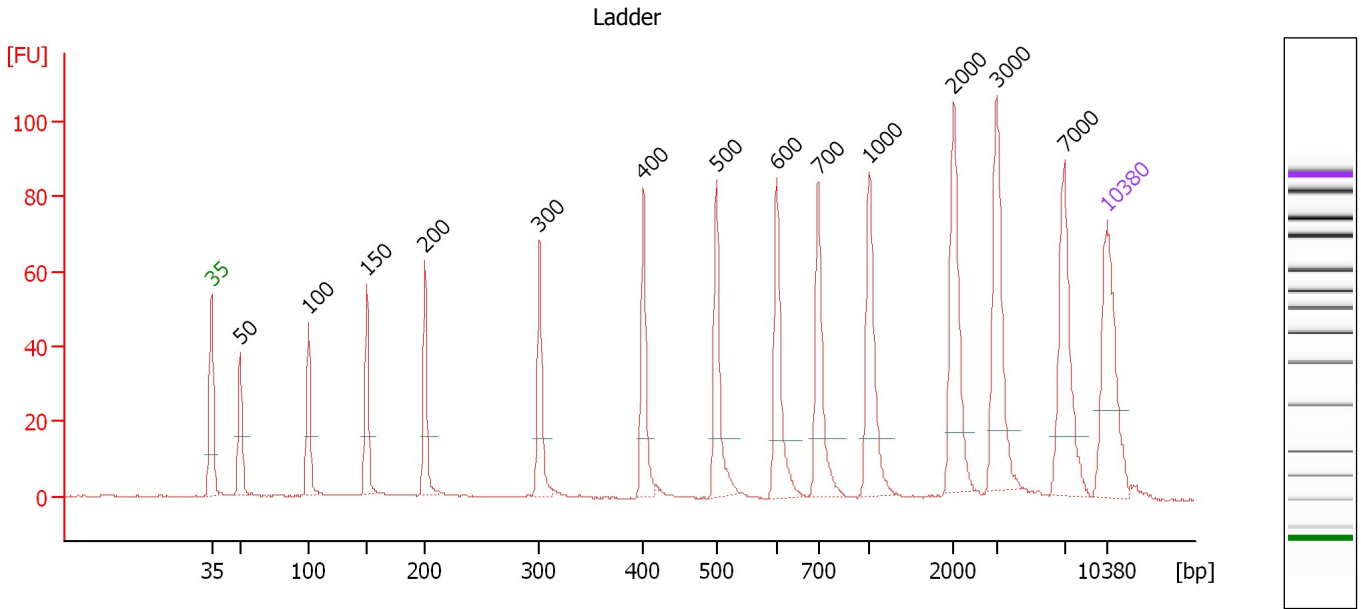
Ladder

Ladder Peak	Size	Area
1	35	160
2	50	210
3	100	208
4	150	221
5	200	242
6	300	270
7	400	305
8	500	306
9	600	336
10	700	321
11	1000	366
12	2000	413
13	3000	411
14	7000	400
15	10380	214

Assay Class: High Sensitivity DNA Assay
 Data Path: C:\...ents and Settings\Bioanalyzer\2013-04-16\2013-04-16_001.xad

Created: 4/16/2013 10:17:32 AM
 Modified: 4/16/2013 11:02:07 AM

Electropherogram Summary



Overall Results for Ladder

Noise: 0.1

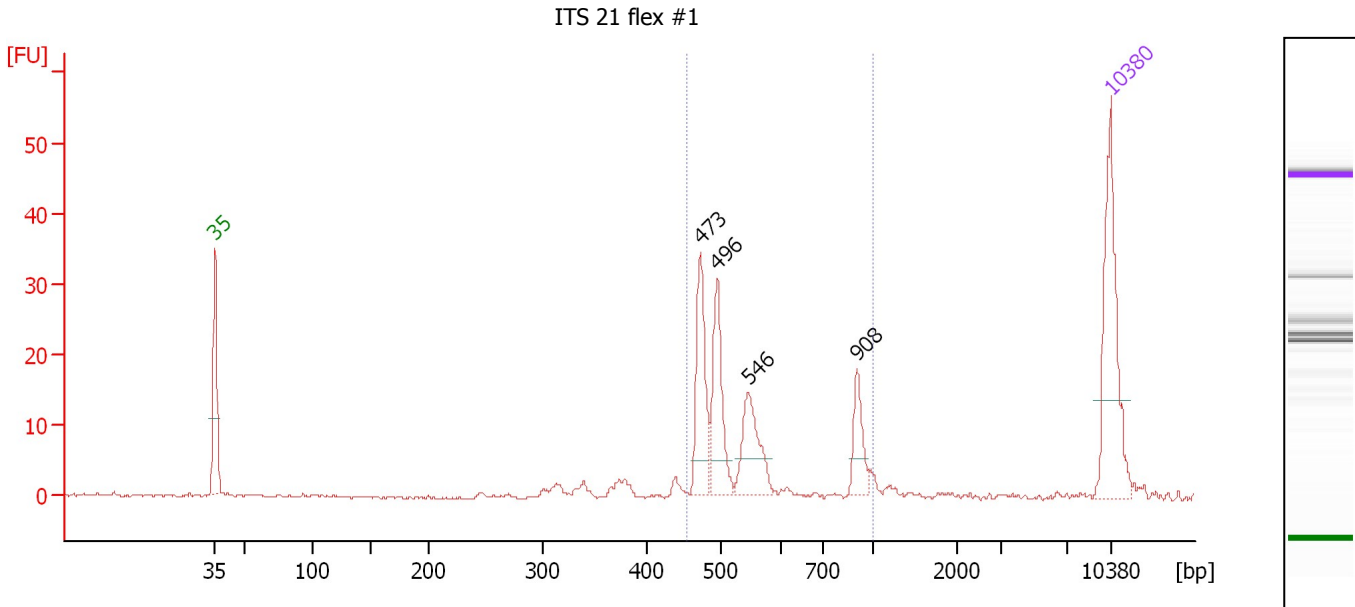
Peak table for Ladder

Peak	Size [bp]	Conc. [pg/μl]	Molarity [pmol/l]	Observations
1	35	125.00	5,411.3	Lower Marker
2	50	150.00	4,545.5	Ladder Peak
3	100	150.00	2,272.7	Ladder Peak
4	150	150.00	1,515.2	Ladder Peak
5	200	150.00	1,136.4	Ladder Peak
6	300	150.00	757.6	Ladder Peak
7	400	150.00	568.2	Ladder Peak
8	500	150.00	454.5	Ladder Peak
9	600	150.00	378.8	Ladder Peak
10	700	150.00	324.7	Ladder Peak
11	1,000	150.00	227.3	Ladder Peak
12	2,000	150.00	113.6	Ladder Peak
13	3,000	150.00	75.8	Ladder Peak
14	7,000	150.00	32.5	Ladder Peak
15	10,380	75.00	10.9	Upper Marker

Assay Class: High Sensitivity DNA Assay
 Data Path: C:\...ents and Settings\Bioanalyzer\2013-04-16\2013-04-16_001.xad

Created: 4/16/2013 10:17:32 AM
 Modified: 4/16/2013 11:02:07 AM

Electropherogram Summary Continued ...



Overall Results for sample 1 : ITS 21 flex #1

Number of peaks found: 4 Corr. Area 1: 120.9
 Noise: 0.1

Peak table for sample 1 : ITS 21 flex #1

Peak	Size [bp]	Conc. [pg/μl]	Molarity [pmol/l]	Observations
1	35	125.00	5,411.3	Lower Marker
2	473	67.62	216.6	
3	496	61.70	188.3	
4	546	49.33	136.9	
5	908	25.69	42.8	
6	10,380	75.00	10.9	Upper Marker

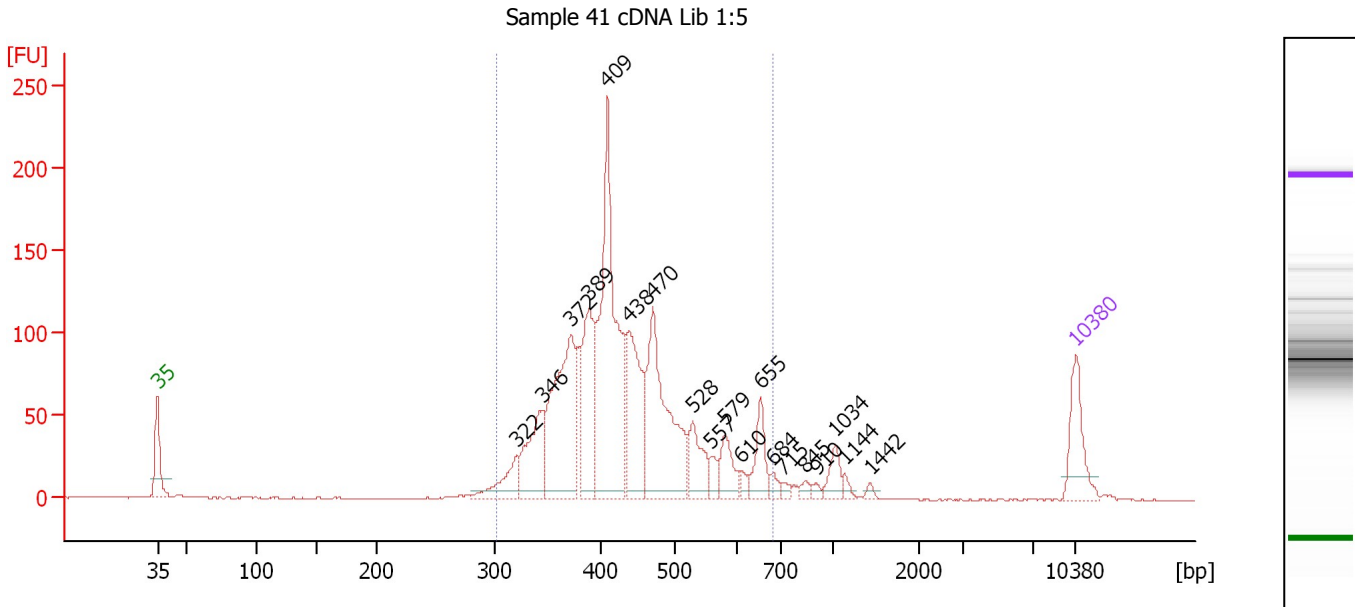
Region table for sample 1 : ITS 21 flex #1

From [bp]	To [bp]	Average Size [bp]	Molarity [pmol/l]	Conc. [pg/μl]	Corr. Area	% of Total	Size distribution in CV [%]	Color
454	1,000	578	617.1	219.25	120.9	82	27.3	Blue

Assay Class: High Sensitivity DNA Assay
 Data Path: C:\...ents and Settings\Bioanalyzer\2013-04-16\2013-04-16_001.xad

Created: 4/16/2013 10:17:32 AM
 Modified: 4/16/2013 11:02:07 AM

Electropherogram Summary Continued ...



Overall Results for sample 2 : Sample 41 cDNA Lib 1:5

Number of peaks found: 19 Corr. Area 1: 1,720.9
 Noise: 0.4

Peak table for sample 2 : Sample 41 cDNA Lib 1:5

Peak	Size [bp]	Conc. [pg/μl]	Molarity [pmol/l]	Observations
1	35	125.00	5,411.3	Lower Marker
2	322	72.94	343.3	
3	346	143.74	630.0	
4	372	328.81	1,338.9	
5	389	199.38	776.6	
6	409	495.27	1,834.1	
7	438	206.83	714.8	
8	470	318.32	1,026.2	
9	528	81.46	233.6	
10	557	23.37	63.5	
11	579	56.83	148.6	
12	610	12.38	30.8	
13	655	64.54	149.4	
14	684	14.61	32.4	
15	715	8.71	18.5	
16	845	11.14	20.0	
17	910	7.37	12.3	
18	1,034	32.90	48.2	
19	1,144	10.09	13.4	
20	1,442	6.19	6.5	
21	10,380	75.00	10.9	Upper Marker

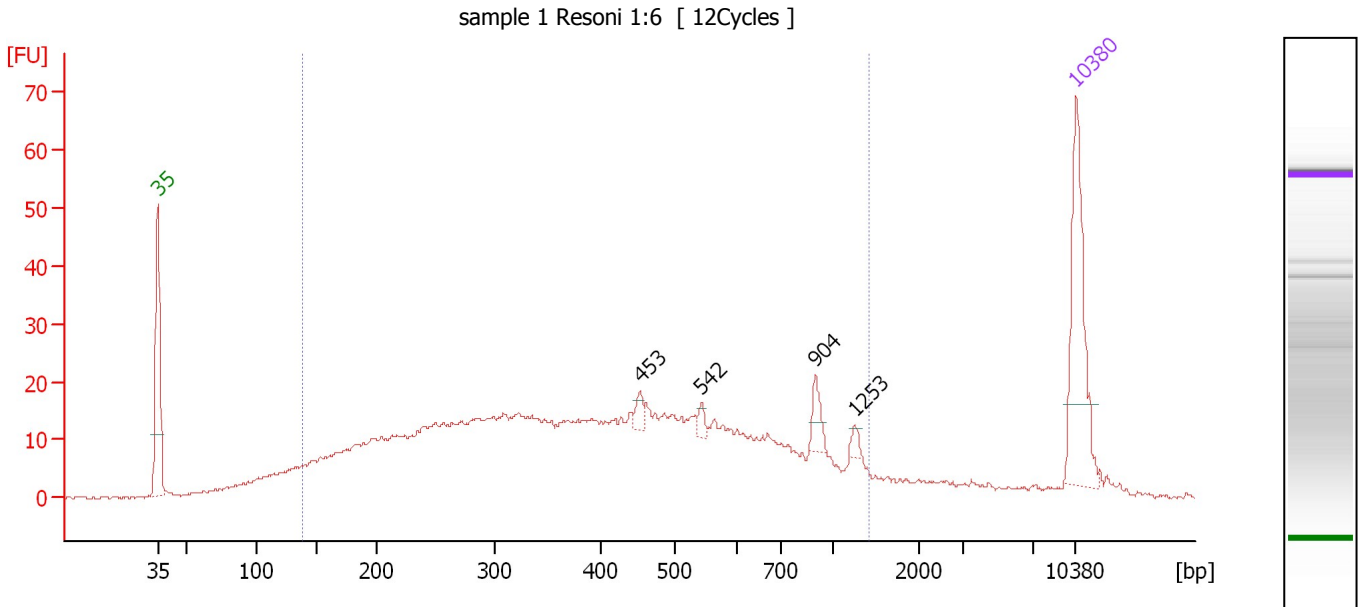
Region table for sample 2 : Sample 41 cDNA Lib 1:5

From [bp]	To [bp]	Average Size [bp]	Molarity [pmol/l]	Conc. [pg/μl]	Corr. Area	% of Total	Size distribution in CV [%]	Color
302	683	435	7,473.4	2,067.47	1,720.9	93	18.2	Blue

Assay Class: High Sensitivity DNA Assay
 Data Path: C:\...ents and Settings\Bioanalyzer\2013-04-16\2013-04-16_001.xad

Created: 4/16/2013 10:17:32 AM
 Modified: 4/16/2013 11:02:07 AM

Electropherogram Summary Continued ...



Overall Results for sample 3 : sample 1 Resoni 1:6

Number of peaks found: 4 Corr. Area 1: 703.0
 Noise: 0.2

Peak table for sample 3 : sample 1 Resoni 1:6

Peak	Size [bp]	Conc. [pg/µl]	Molarity [pmol/l]	Observations
1	35	125.00	5,411.3	Lower Marker
2	453	9.26	31.0	
3	542	6.27	17.5	
4	904	14.36	24.1	
5	1,253	4.68	5.7	
6	10,380	75.00	10.9	Upper Marker

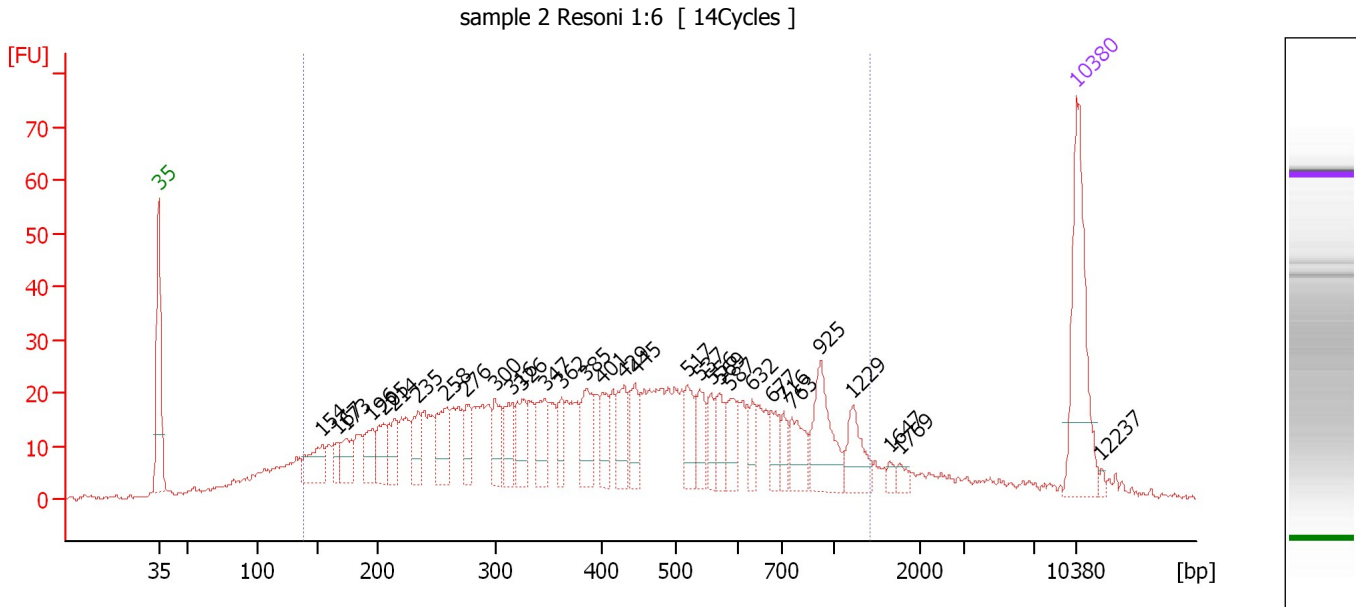
Region table for sample 3 : sample 1 Resoni 1:6

From [bp]	To [bp]	Average Size [bp]	Molarity [pmol/l]	Conc. [pg/µl]	Corr. Area	% of Total	Size distribution in CV [%]	Color
138	1,416	450	5,790.2	1,191.87	703.0	89	54.6	Blue

Assay Class: High Sensitivity DNA Assay
 Data Path: C:\...ents and Settings\Bioanalyzer\2013-04-16\2013-04-16_001.xad

Created: 4/16/2013 10:17:32 AM
 Modified: 4/16/2013 11:02:07 AM

Electropherogram Summary Continued ...



Overall Results for sample 4 : sample 2 Resoni 1:6

Number of peaks found: 32 Corr. Area 1: 1,004.2
 Noise: 0.5

Peak table for sample 4 : sample 2 Resoni 1:6

Peak	Size [bp]	Conc. [pg/μl]	Molarity [pmol/l]	Observations
1	35	125.00	5,411.3	Lower Marker
2	154	35.52	350.1	
3	167	14.51	132.0	
4	173	25.66	224.2	
5	196	26.53	205.6	
6	205	25.75	190.4	
7	214	29.50	208.4	
8	235	27.96	180.4	
9	258	39.41	231.6	
10	276	22.50	123.6	
11	300	26.66	134.5	
12	316	25.78	123.6	
13	326	30.65	142.7	
14	347	32.36	141.3	
15	362	18.54	77.5	
16	385	34.04	133.8	
17	401	22.72	85.8	
18	429	29.24	103.2	
19	445	27.50	93.6	
20	517	25.64	75.2	
21	537	22.57	63.7	
22	556	16.86	46.0	
23	569	20.00	53.3	
24	587	22.24	57.4	
25	632	13.59	32.6	
26	677	17.03	38.1	

Assay Class: High Sensitivity DNA Assay
 Data Path: C:\...ents and Settings\Bioanalyzer\2013-04-16\2013-04-16_001.xad


Created: 4/16/2013 10:17:32 AM
 Modified: 4/16/2013 11:02:07 AM

Electropherogram Summary Continued ...

... Peak table for sample 4 : sample 2 Resoni 1:6

Peak	Size [bp]	Conc. [pg/µl]	Molarity [pmol/l]	Observations
27	716	11.57	24.5	
28	763	25.33	50.3	
29	925	48.91	80.1	
30	1,229	25.62	31.6	
31	1,647	4.33	4.0	
32	1,769	5.33	4.6	
33	10,380	75.00	10.9	Upper Marker
34	12,237	0.00	0.0	

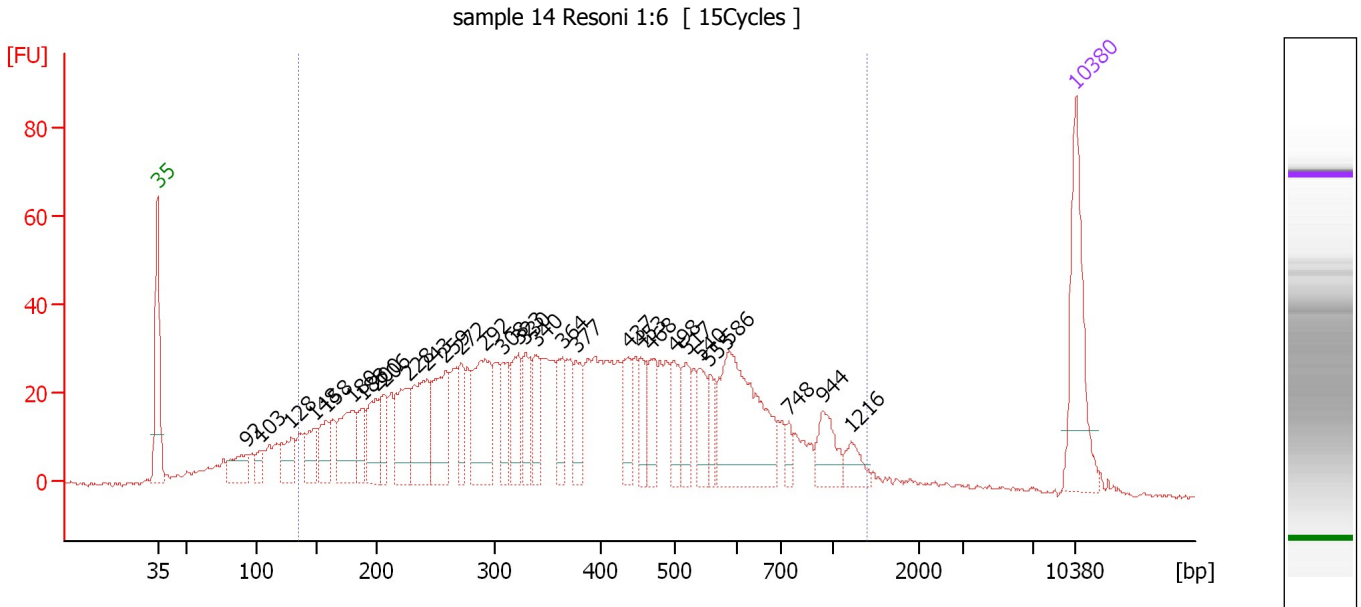
Region table for sample 4 : sample 2 Resoni 1:6

From [bp]	To [bp]	Average Size [bp]	Molarity [pmol/l]	Conc. [pg/µl]	Corr. Area	% of Total	Size distribution in CV [%]	Color
138	1,416	464	6,829.5	1,430.41	1,004.2	86	54.1	

Assay Class: High Sensitivity DNA Assay
 Data Path: C:\...ents and Settings\Bioanalyzer\2013-04-16\2013-04-16_001.xad

Created: 4/16/2013 10:17:32 AM
 Modified: 4/16/2013 11:02:07 AM

Electropherogram Summary Continued ...



Overall Results for sample 5 : sample 14 Resoni 1:6

Number of peaks found: 31 Corr. Area 1: 1,424.1
 Noise: 0.6

Peak table for sample 5 : sample 14 Resoni 1:6

Peak	Size [bp]	Conc. [pg/μl]	Molarity [pmol/l]	Observations
1	35	125.00	5,411.3	Lower Marker
2	92	34.94	573.6	
3	103	15.35	226.0	
4	128	37.78	445.8	
5	148	35.99	368.8	
6	158	37.57	360.6	
7	180	62.61	527.5	
8	188	29.49	237.3	
9	200	51.18	387.1	
10	206	30.47	223.7	
11	228	63.88	425.1	
12	243	83.65	520.8	
13	259	73.29	429.5	
14	272	34.80	194.1	
15	292	91.22	472.5	
16	308	40.35	198.6	
17	323	48.03	225.3	
18	330	35.59	163.5	
19	340	34.55	154.1	
20	364	32.00	133.1	
21	377	36.65	147.2	
22	437	34.97	121.3	
23	453	28.30	94.6	
24	468	31.65	102.5	
25	498	33.84	103.0	
26	517	28.98	85.0	

Assay Class: High Sensitivity DNA Assay
 Data Path: C:\...ents and Settings\Bioanalyzer\2013-04-16\2013-04-16_001.xad

Created: 4/16/2013 10:17:32 AM
 Modified: 4/16/2013 11:02:07 AM

Electropherogram Summary Continued ...

... Peak table for sample 5 : sample 14 Resoni 1:6

Peak	Size [bp]	Conc. [pg/μl]	Molarity [pmol/l]	Observations
27	540	29.96	84.1	
28	555	20.17	55.0	
29	586	141.20	365.1	
30	748	10.92	22.1	
31	944	31.02	49.8	
32	1,216	16.29	20.3	
33	10,380	75.00	10.9	Upper Marker

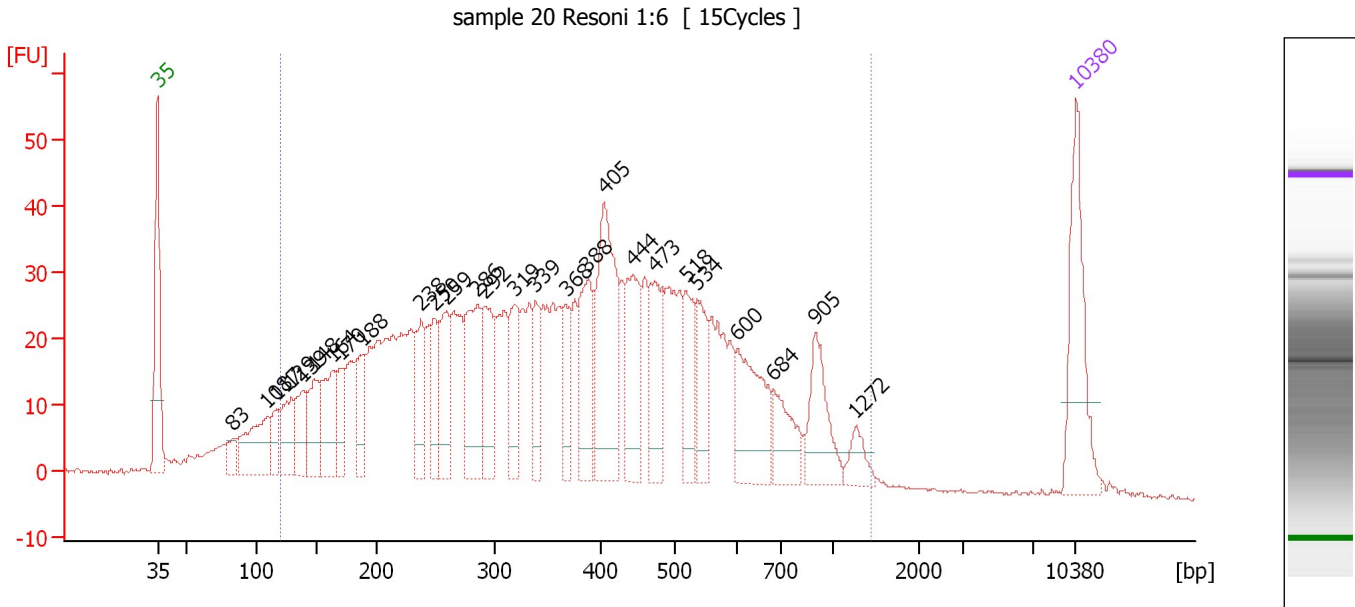
Region table for sample 5 : sample 14 Resoni 1:6

From [bp]	To [bp]	Average Size [bp]	Molarity [pmol/l]	Conc. [pg/μl]	Corr. Area	% of Total	Size distribution in CV [%]	Color
135	1,397	424	9,169.2	1,850.86	1,424.1	89	50.3	

Assay Class: High Sensitivity DNA Assay
 Data Path: C:\...ents and Settings\Bioanalyzer\2013-04-16\2013-04-16_001.xad

Created: 4/16/2013 10:17:32 AM
 Modified: 4/16/2013 11:02:07 AM

Electropherogram Summary Continued ...



Overall Results for sample 6 : sample 20 Resoni 1:6

Number of peaks found: 27 Corr. Area 1: 1,384.8
 Noise: 0.3

Peak table for sample 6 : sample 20 Resoni 1:6

Peak	Size [bp]	Conc. [pg/μl]	Molarity [pmol/l]	Observations
1	35	125.00	5,411.3	Lower Marker
2	83	19.97	366.1	
3	108	84.81	1,188.1	
4	117	28.71	372.8	
5	129	51.47	606.0	
6	139	49.09	536.2	
7	148	59.13	606.5	
8	164	69.24	640.7	
9	170	37.82	336.5	
10	188	46.02	371.3	
11	238	53.59	341.3	
12	250	43.69	265.3	
13	259	64.63	377.8	
14	286	99.31	525.9	
15	292	65.30	338.6	
16	319	58.72	279.0	
17	339	39.21	175.3	
18	368	36.49	150.4	
19	388	76.78	300.1	
20	405	148.25	554.9	
21	444	78.69	268.6	
22	473	61.21	196.3	
23	518	47.57	139.2	
24	534	48.03	136.2	
25	600	80.73	203.8	
26	684	43.02	95.3	

Assay Class: High Sensitivity DNA Assay
 Data Path: C:\...ents and Settings\Bioanalyzer\2013-04-16\2013-04-16_001.xad

Created: 4/16/2013 10:17:32 AM
 Modified: 4/16/2013 11:02:07 AM

Electropherogram Summary Continued ...

... Peak table for sample 6 : sample 20 Resoni 1:6

Peak	Size [bp]	Conc. [pg/μl]	Molarity [pmol/l]	Observations
27	905	54.98	92.0	
28	1,272	17.46	20.8	
29	10,380	75.00	10.9	Upper Marker

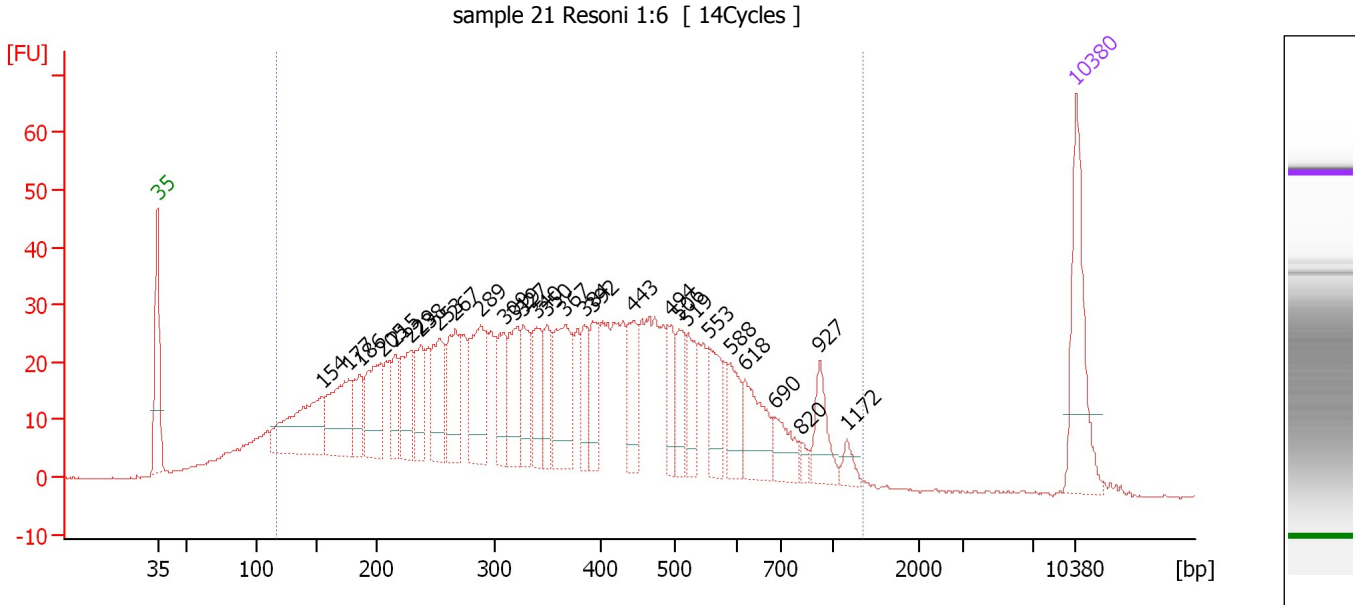
Region table for sample 6 : sample 20 Resoni 1:6

From [bp]	To [bp]	Average Size [bp]	Molarity [pmol/l]	Conc. [pg/μl]	Corr. Area	% of Total	Size distribution in CV [%]	Color
119	1,451	411	12,760.4	2,438.38	1,384.8	94	50.8	

Assay Class: High Sensitivity DNA Assay
 Data Path: C:\...ents and Settings\Bioanalyzer\2013-04-16\2013-04-16_001.xad

Created: 4/16/2013 10:17:32 AM
 Modified: 4/16/2013 11:02:07 AM

Electropherogram Summary Continued ...



Overall Results for sample 7 : sample 21 Resoni 1:6

Number of peaks found: 29 Corr. Area 1: 1,352.8
 Noise: 0.2

Peak table for sample 7 : sample 21 Resoni 1:6

Peak	Size [bp]	Conc. [pg/μl]	Molarity [pmol/l]	Observations
1	35	125.00	5,411.3	Lower Marker
2	154	115.57	1,135.1	
3	177	89.44	766.1	
4	186	40.97	333.9	
5	205	77.60	574.7	
6	215	34.79	244.8	
7	229	61.88	409.3	
8	238	47.30	300.8	
9	253	67.85	406.3	
10	267	64.67	366.6	
11	289	83.85	440.1	
12	309	48.95	239.7	
13	319	57.76	274.3	
14	327	43.87	203.0	
15	340	45.38	202.0	
16	350	36.85	159.5	
17	367	83.89	346.5	
18	384	32.30	127.4	
19	392	42.88	165.7	
20	443	51.18	175.0	
21	494	29.94	91.9	
22	506	35.66	106.8	
23	519	33.25	97.0	
24	553	42.84	117.3	
25	588	35.22	90.7	
26	618	53.46	131.1	

Assay Class: High Sensitivity DNA Assay
 Data Path: C:\...ents and Settings\Bioanalyzer\2013-04-16\2013-04-16_001.xad

Created: 4/16/2013 10:17:32 AM
 Modified: 4/16/2013 11:02:07 AM

Electropherogram Summary Continued ...

... Peak table for sample 7 : sample 21 Resoni 1:6

Peak	Size [bp]	Conc. [pg/μl]	Molarity [pmol/l]	Observations
27	690	31.79	69.8	
28	820	7.02	13.0	
29	927	34.82	56.9	
30	1,172	10.60	13.7	
31	10,380	75.00	10.9	Upper Marker

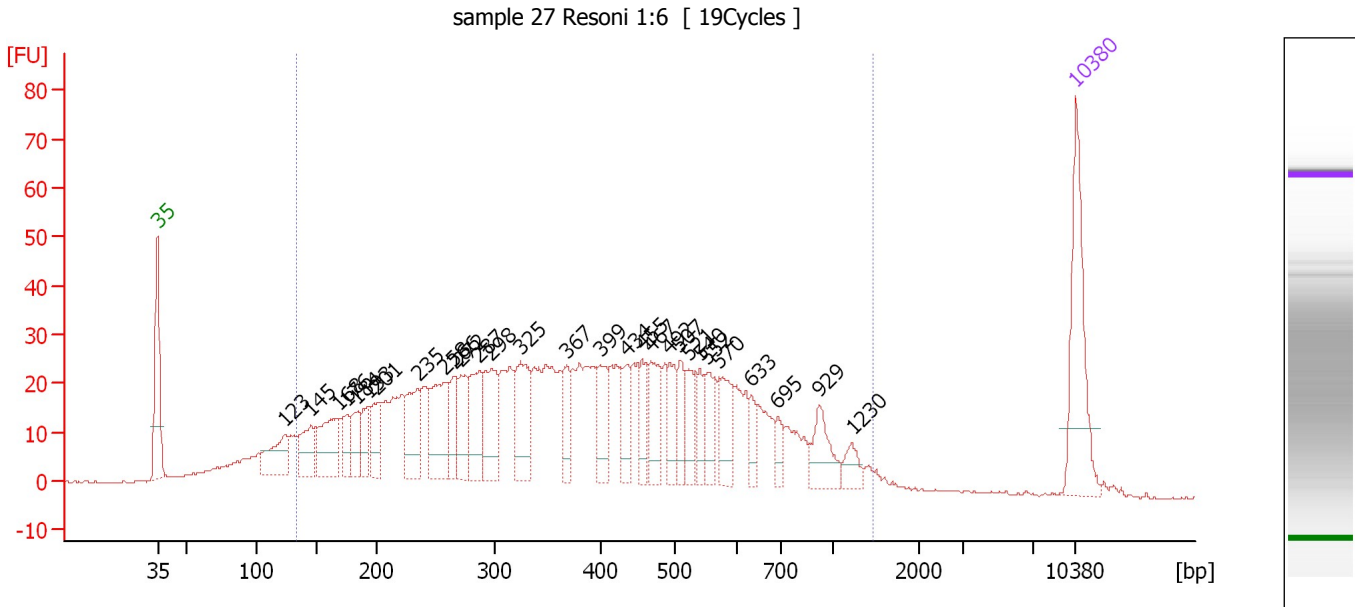
Region table for sample 7 : sample 21 Resoni 1:6

From [bp]	To [bp]	Average Size [bp]	Molarity [pmol/l]	Conc. [pg/μl]	Corr. Area	% of Total	Size distribution in CV [%]	Color
117	1,354	397	12,534.7	2,342.18	1,352.8	93	48.9	

Assay Class: High Sensitivity DNA Assay
 Data Path: C:\...ents and Settings\Bioanalyzer\2013-04-16\2013-04-16_001.xad

Created: 4/16/2013 10:17:32 AM
 Modified: 4/16/2013 11:02:07 AM

Electropherogram Summary Continued ...



Overall Results for sample 8 : sample 27 Resoni 1:6

Number of peaks found: 29 Corr. Area 1: 1,206.8
 Noise: 0.2

Peak table for sample 8 : sample 27 Resoni 1:6

Peak	Size [bp]	Conc. [pg/μl]	Molarity [pmol/l]	Observations
1	35	125.00	5,411.3	Lower Marker
2	123	48.82	601.6	
3	145	41.26	431.1	
4	168	63.82	576.8	
5	176	25.80	222.5	
6	184	28.46	234.7	
7	193	27.49	215.6	
8	201	33.10	249.8	
9	235	54.94	353.6	
10	258	70.01	410.6	
11	266	30.86	175.8	
12	272	43.18	241.0	
13	287	57.02	300.7	
14	298	62.01	315.8	
15	325	63.09	294.3	
16	367	27.23	112.3	
17	399	37.79	143.4	
18	434	29.24	102.0	
19	455	25.76	85.8	
20	467	42.78	138.8	
21	492	30.23	93.1	
22	507	28.03	83.8	
23	521	29.72	86.4	
24	540	21.83	61.3	
25	552	30.62	84.0	
26	570	38.81	103.1	

Assay Class: High Sensitivity DNA Assay
Data Path: C:\...ents and Settings\Bioanalyzer\2013-04-16\2013-04-16_001.xad


Created: 4/16/2013 10:17:32 AM
Modified: 4/16/2013 11:02:07 AM

Electropherogram Summary Continued ...

... Peak table for sample 8 : sample 27 Resoni 1:6

Peak	Size [bp]	Conc. [pg/µl]	Molarity [pmol/l]	Observations
27	633	16.55	39.6	
28	695	12.60	27.5	
29	929	32.84	53.6	
30	1,230	12.97	16.0	
31	10,380	75.00	10.9	Upper Marker

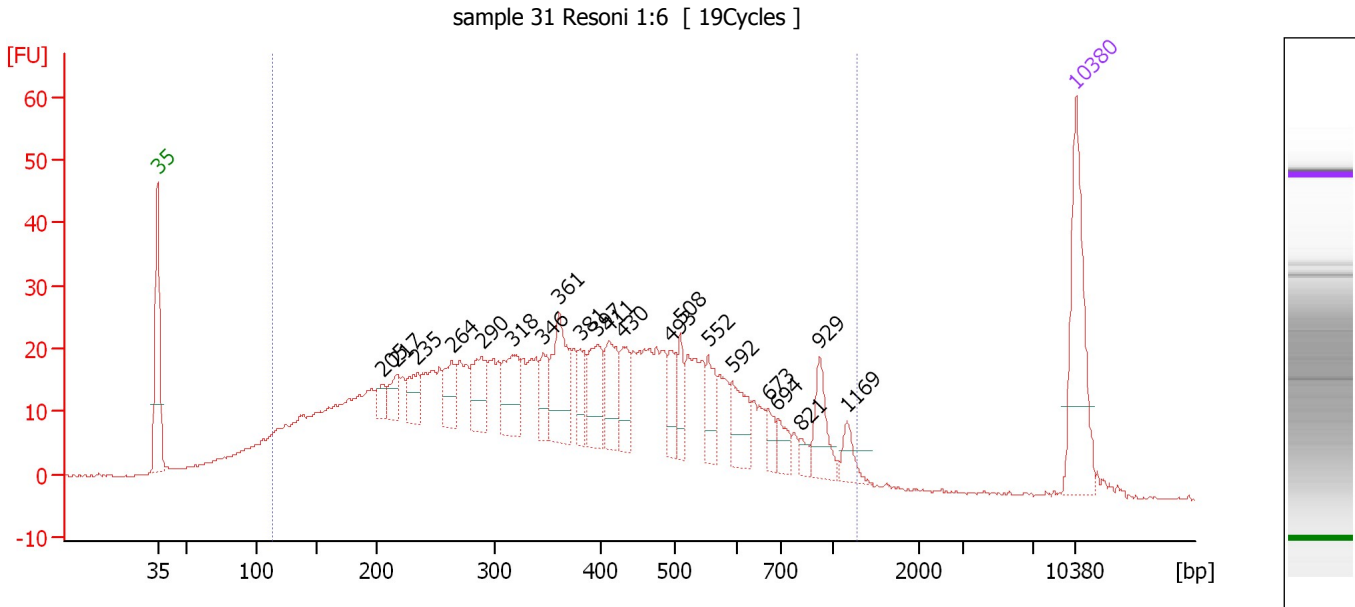
Region table for sample 8 : sample 27 Resoni 1:6

From [bp]	To [bp]	Average Size [bp]	Molarity [pmol/l]	Conc. [pg/µl]	Corr. Area	% of Total	Size distribution in CV [%]	Color
133	1,463	426	8,893.9	1,784.33	1,206.8	91	51.3	

Assay Class: High Sensitivity DNA Assay
 Data Path: C:\...ents and Settings\Bioanalyzer\2013-04-16\2013-04-16_001.xad

Created: 4/16/2013 10:17:32 AM
 Modified: 4/16/2013 11:02:07 AM

Electropherogram Summary Continued ...



Overall Results for sample 9 : sample 31 Resoni 1:6

Number of peaks found: 21 Corr. Area 1: 1,044.1
 Noise: 0.2

Peak table for sample 9 : sample 31 Resoni 1:6

Peak	Size [bp]	Conc. [pg/μl]	Molarity [pmol/l]	Observations
1	35	125.00	5,411.3	Lower Marker
2	205	13.25	97.8	
3	217	22.02	154.0	
4	235	26.94	173.7	
5	264	30.66	176.0	
6	290	40.21	210.4	
7	318	47.35	225.8	
8	346	24.77	108.3	
9	361	63.72	267.4	
10	381	22.49	89.5	
11	397	43.59	166.3	
12	411	41.54	153.1	
13	430	27.60	97.4	
14	493	23.98	73.7	
15	508	21.18	63.2	
16	552	26.69	73.2	
17	592	34.34	87.8	
18	673	12.57	28.3	
19	694	14.47	31.6	
20	821	7.28	13.4	
21	929	30.87	50.4	
22	1,169	14.03	18.2	
23	10,380	75.00	10.9	Upper Marker

Assay Class: High Sensitivity DNA Assay
Data Path: C:\...ents and Settings\Bioanalyzer\2013-04-16\2013-04-16_001.xad

Created: 4/16/2013 10:17:32 AM
Modified: 4/16/2013 11:02:07 AM

Electropherogram Summary Continued ...

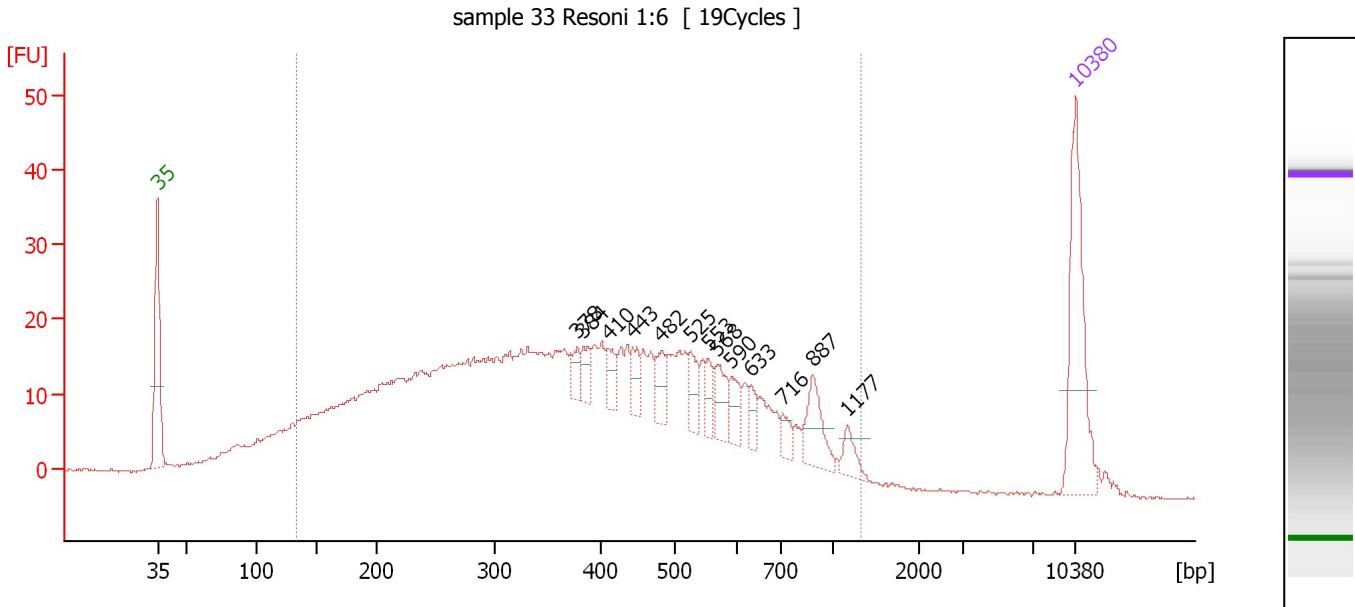
... Region table for sample 9 : sample 31 Resoni 1:6

From [bp]	To [bp]	Average Size [bp]	Molarity [pmol/l]	Conc. [pg/μl]	Corr. Area	% of Total	Size distribution in CV [%]	Color
113	1,288	409	10,161.3	1,907.67	1,044.1	93	50.4	■

Assay Class: High Sensitivity DNA Assay
 Data Path: C:\...ents and Settings\Bioanalyzer\2013-04-16\2013-04-16_001.xad

Created: 4/16/2013 10:17:32 AM
 Modified: 4/16/2013 11:02:07 AM

Electropherogram Summary Continued ...



Overall Results for sample 10 : sample 33 Resoni 1:6

Number of peaks found: 13 Corr. Area 1: 827.4
 Noise: 0.2

Peak table for sample 10 : sample 33 Resoni 1:6

Peak	Size [bp]	Conc. [pg/μl]	Molarity [pmol/l]	Observations
1	35	125.00	5,411.3	Lower Marker
2	378	11.95	47.9	
3	384	15.06	59.5	
4	410	14.79	54.7	
5	443	15.33	52.4	
6	482	18.70	58.8	
7	525	18.29	52.8	
8	553	13.20	36.2	
9	568	21.30	56.8	
10	590	16.27	41.8	
11	633	9.80	23.5	
12	716	10.31	21.8	
13	887	31.30	53.5	
14	1,177	12.16	15.7	
15	10,380	75.00	10.9	Upper Marker

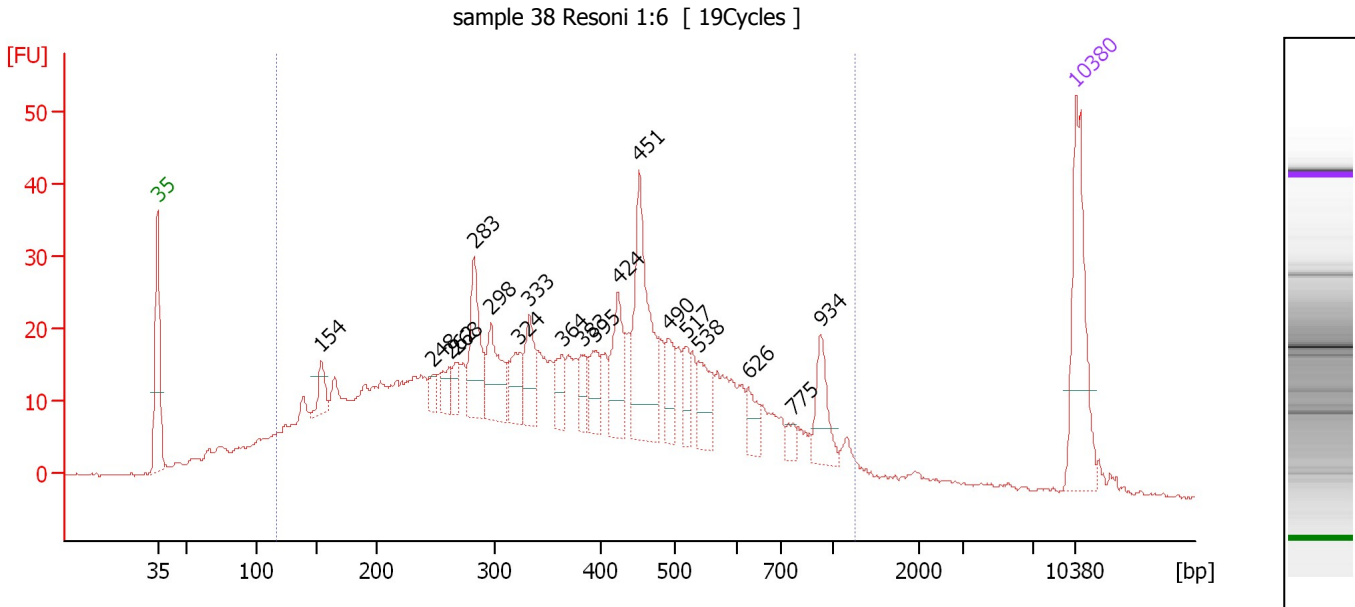
Region table for sample 10 : sample 33 Resoni 1:6

From [bp]	To [bp]	Average Size [bp]	Molarity [pmol/l]	Conc. [pg/μl]	Corr. Area	% of Total	Size distribution in CV [%]	Color
134	1,338	421	8,798.3	1,762.41	827.4	91	49.4	Blue

Assay Class: High Sensitivity DNA Assay
 Data Path: C:\...ents and Settings\Bioanalyzer\2013-04-16\2013-04-16_001.xad

Created: 4/16/2013 10:17:32 AM
 Modified: 4/16/2013 11:02:07 AM

Electropherogram Summary Continued ...



Overall Results for sample 11 : sample 38 Resoni 1:6

Number of peaks found: 19 Corr. Area 1: 940.2
 Noise: 0.2

Peak table for sample 11 : sample 38 Resoni 1:6

Peak	Size [bp]	Conc. [pg/μl]	Molarity [pmol/l]	Observations
1	35	125.00	5,411.3	Lower Marker
2	154	20.96	206.5	
3	248	11.02	67.3	
4	262	17.41	100.6	
5	268	14.70	83.3	
6	283	61.97	331.7	
7	298	49.91	254.1	
8	324	30.27	141.6	
9	333	39.05	177.4	
10	364	21.43	89.2	
11	383	18.08	71.5	
12	395	26.71	102.3	
13	424	48.18	172.3	
14	451	110.01	369.3	
15	490	26.46	81.8	
16	517	18.80	55.1	
17	538	31.68	89.3	
18	626	17.68	42.8	
19	775	8.06	15.8	
20	934	33.13	53.8	
21	10,380	75.00	10.9	Upper Marker

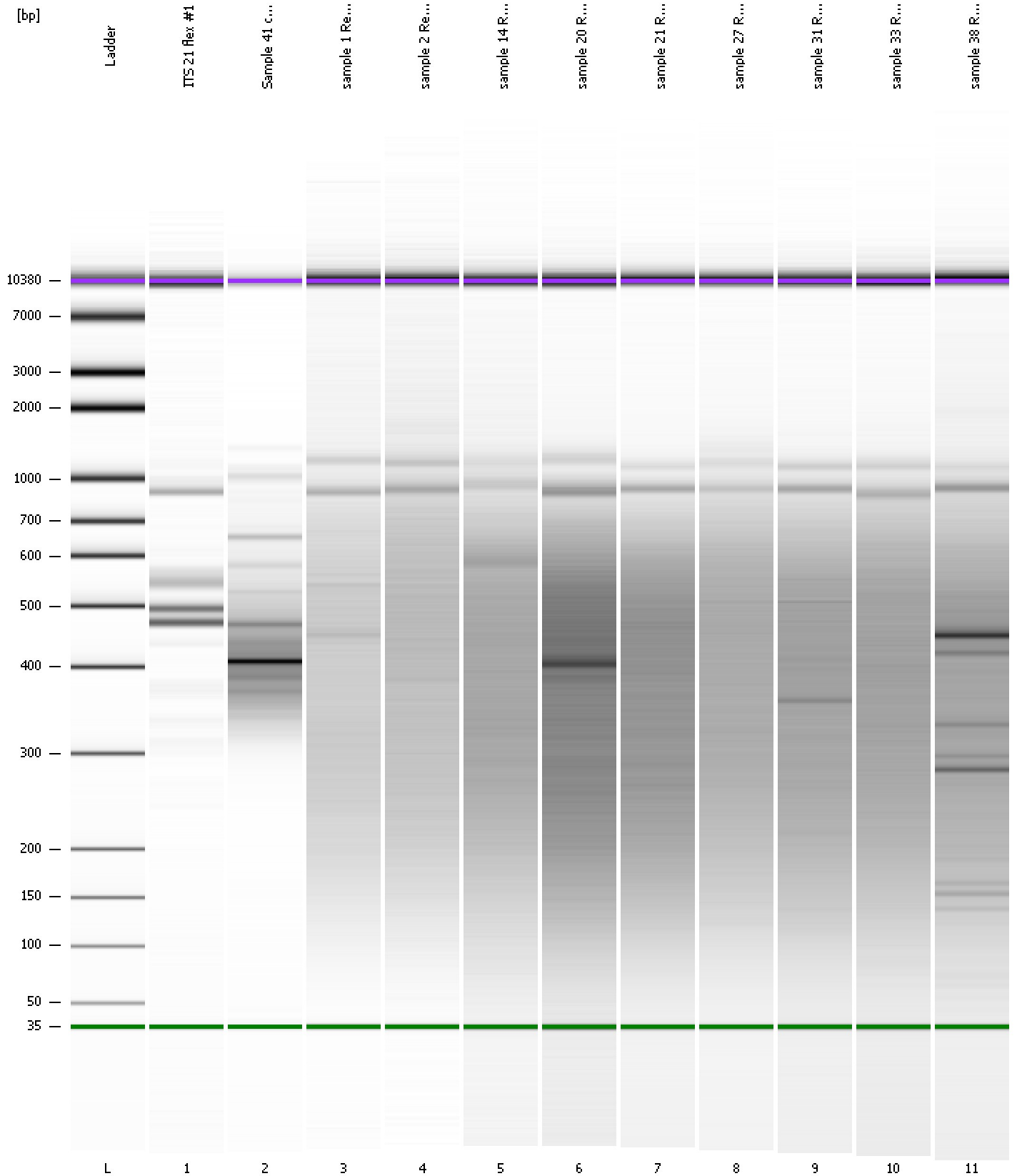
Region table for sample 11 : sample 38 Resoni 1:6

From [bp]	To [bp]	Average Size [bp]	Molarity [pmol/l]	Conc. [pg/μl]	Corr. Area	% of Total	Size distribution in CV [%]	Color
117	1,258	410	10,476.6	1,991.51	940.2	91	49.4	Blue

Assay Class: High Sensitivity DNA Assay
Data Path: C:\...ents and Settings\Bioanalyzer\2013-04-16\2013-04-16_001.xad

Created: 4/16/2013 10:17:32 AM
Modified: 4/16/2013 11:02:07 AM

Gel Image



Assay Class: High Sensitivity DNA Assay
 Data Path: C:\...ents and Settings\Bioanalyzer\2013-04-16\2013-04-16_001.xad

Created: 4/16/2013 10:17:32 AM
 Modified: 4/16/2013 11:02:07 AM

Run Logbook

Description	Number	Source	Category	Sub Category	Time	Time Zone	User	Host
Run ended on port 1 (Number of wells acquired: 12)		Instrument	Run		4/16/2013 10:58:52 AM	(GMT --07:00) Pacific Standard Time	UC Davis	D8XSMGH1
Run started on port 1 (File: C:\Documents and Settings\Bioanalyzer\2013-04-16\2013-04-16_001.xad)		Instrument	Run		4/16/2013 10:17:37 AM	(GMT --07:00) Pacific Standard Time	UC Davis	D8XSMGH1
Product Number : G2938B		Instrument	Run		4/16/2013 10:17:37 AM	(GMT --07:00) Pacific Standard Time	UC Davis	D8XSMGH1
Name :		Instrument	Run		4/16/2013 10:17:37 AM	(GMT --07:00) Pacific Standard Time	UC Davis	D8XSMGH1
Vendor : Agilent Technologies		Instrument	Run		4/16/2013 10:17:37 AM	(GMT --07:00) Pacific Standard Time	UC Davis	D8XSMGH1
Serial# : DE13701086		Instrument	Run		4/16/2013 10:17:37 AM	(GMT --07:00) Pacific Standard Time	UC Davis	D8XSMGH1
Firmware : C.01.069		Instrument	Run		4/16/2013 10:17:37 AM	(GMT --07:00) Pacific Standard Time	UC Davis	D8XSMGH1
Cartridge : Electrode		Instrument	Run		4/16/2013 10:17:37 AM	(GMT --07:00) Pacific Standard Time	UC Davis	D8XSMGH1