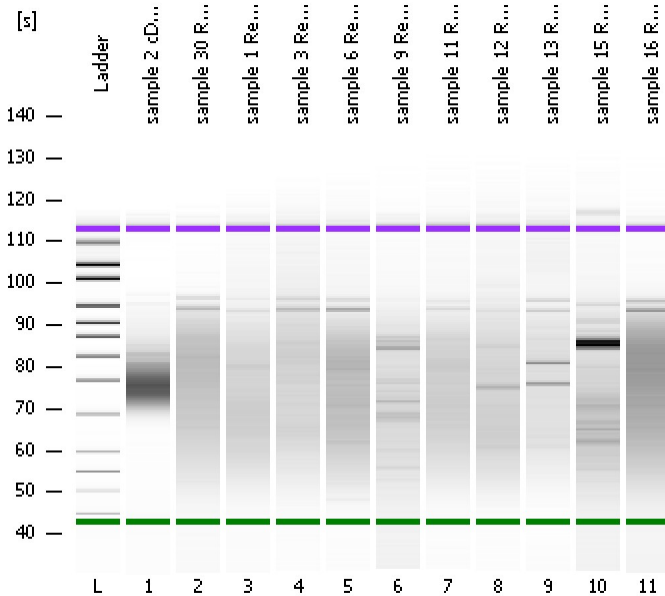


Assay Class: High Sensitivity DNA Assay
Data Path: C:\...ents and Settings\Bioanalyzer\2013-04-18\2013-04-18_001.xad

Created: 4/18/2013 4:30:34 PM
Modified: 4/18/2013 5:16:07 PM

Electrophoresis File Run Summary



Instrument Information:

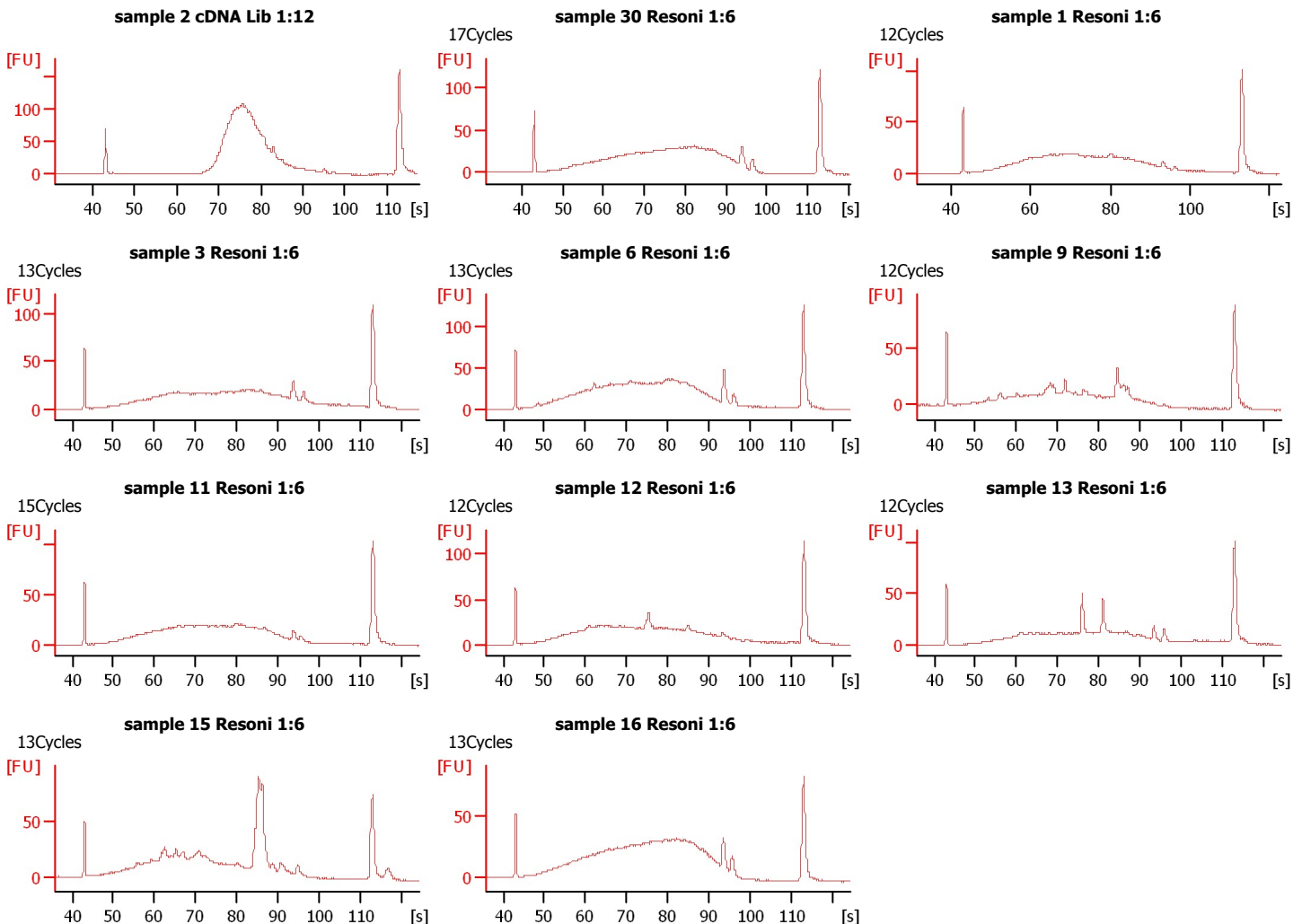
Instrument Name: DE13701086 Firmware: C.01.069
Serial#: DE13701086 Type: G2938B

Assay Information:

Assay Origin Path: C:\Program Files\Agilent\2100 bioanalyzer\2100 expert\assays\dsDNA\High Sensitivity DNA.xsy
Assay Class: High Sensitivity DNA Assay
Version: 1.03
Assay Comments: Copyright © 2003-2010 Agilent Technologies

Chip Information:

Chip Lot #:
Reagent Kit Lot #:
Chip Comments:



Assay Class: High Sensitivity DNA Assay
Data Path: C:\...ents and Settings\Bioanalyzer\2013-04-18\2013-04-18_001.xad

Created: 4/18/2013 4:30:34 PM
Modified: 4/18/2013 5:16:07 PM

Electrophoresis File Run Summary (Chip Summary)

Sample Name	Sample Comment	Rest. Digest	Status	Observation	Result Label	Result Color
sample 2 cDNA Lib 1:12		<input type="checkbox"/>	✓			
sample 30 Resoni 1:6	17Cycles	<input type="checkbox"/>	✓			
sample 1 Resoni 1:6	12Cycles	<input type="checkbox"/>	✓			
sample 3 Resoni 1:6	13Cycles	<input type="checkbox"/>	✓			
sample 6 Resoni 1:6	13Cycles	<input type="checkbox"/>	✓			
sample 9 Resoni 1:6	12Cycles	<input type="checkbox"/>	✓			
sample 11 Resoni 1:6	15Cycles	<input type="checkbox"/>	✓			
sample 12 Resoni 1:6	12Cycles	<input type="checkbox"/>	✓			
sample 13 Resoni 1:6	12Cycles	<input type="checkbox"/>	✓			
sample 15 Resoni 1:6	13Cycles	<input type="checkbox"/>	✓			
sample 16 Resoni 1:6	13Cycles	<input type="checkbox"/>	✓			
Ladder		<input type="checkbox"/>	✓			

Chip Lot #

Reagent Kit Lot #

Chip Comments :

Assay Class: High Sensitivity DNA Assay
Data Path: C:\...ents and Settings\Bioanalyzer\2013-04-18\2013-04-18_001.xad

Created: 4/18/2013 4:30:34 PM
Modified: 4/18/2013 5:16:07 PM

Electrophoresis Assay Details

General Analysis Settings

Number of Available Sample and Ladder Wells (Max.) : 12
Minimum Visible Range [s] : 32
Maximum Visible Range [s] : 138
Start Analysis Time Range [s] : 33
End Analysis Time Range [s] : 137.5
Ladder Concentration [pg/μl] : 1950
Uses Standard Area for Ladder Fragments
Lower Marker Concentration [pg/μl] : 125
Upper Marker Concentration [pg/μl] : 75
Used Upper Marker for Quantitation
Standard Curve Fit is Point to Point
Show Data Aligned to Lower and Upper Marker

Integrator Settings

Integration Start Time [s] : 33.05
Integration End Time [s] : 137
Slope Threshold : 0.8
Height Threshold [FU] : 5
Area Threshold : 0.1
Width Threshold [s] : 0.6
Baseline Plateau [s] : 0.5

Filter Settings

Filter Width [s] : 0.5
Polynomial Order : 4

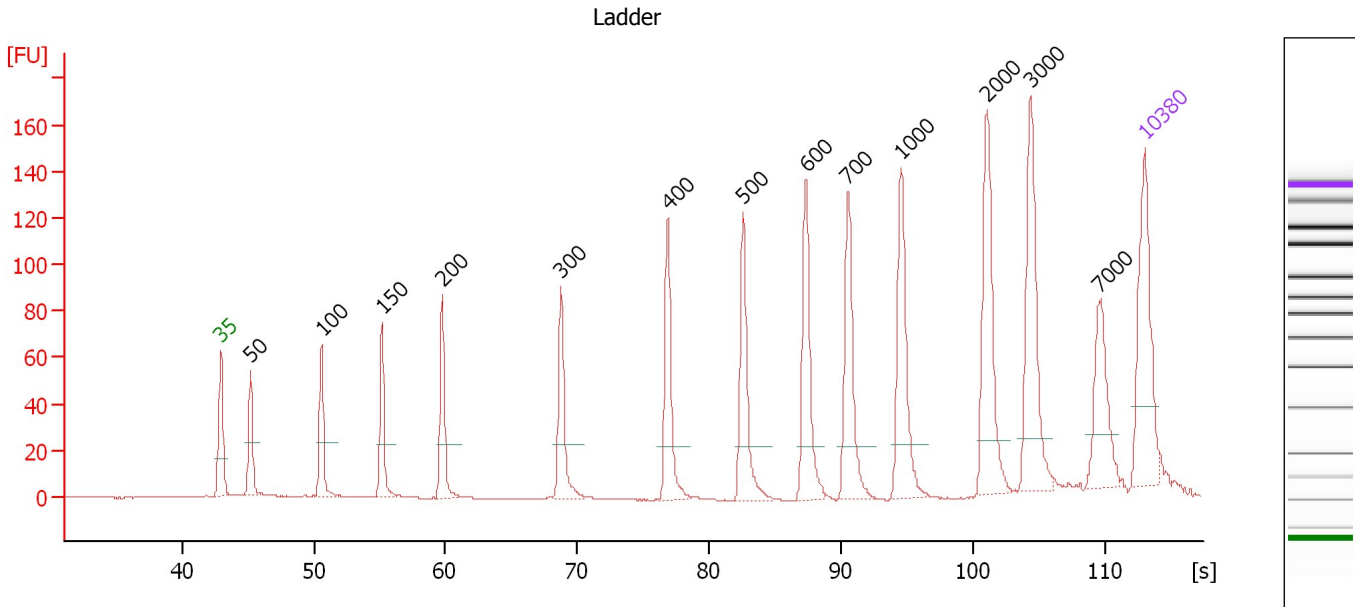
Ladder

Ladder Peak	Size	Area
1	35	160
2	50	210
3	100	208
4	150	221
5	200	242
6	300	270
7	400	305
8	500	306
9	600	336
10	700	321
11	1000	366
12	2000	413
13	3000	411
14	7000	400
15	10380	214

Assay Class: High Sensitivity DNA Assay
 Data Path: C:\...ents and Settings\Bioanalyzer\2013-04-18\2013-04-18_001.xad

Created: 4/18/2013 4:30:34 PM
 Modified: 4/18/2013 5:16:07 PM

Electropherogram Summary



Overall Results for Ladder

Noise: 0.1

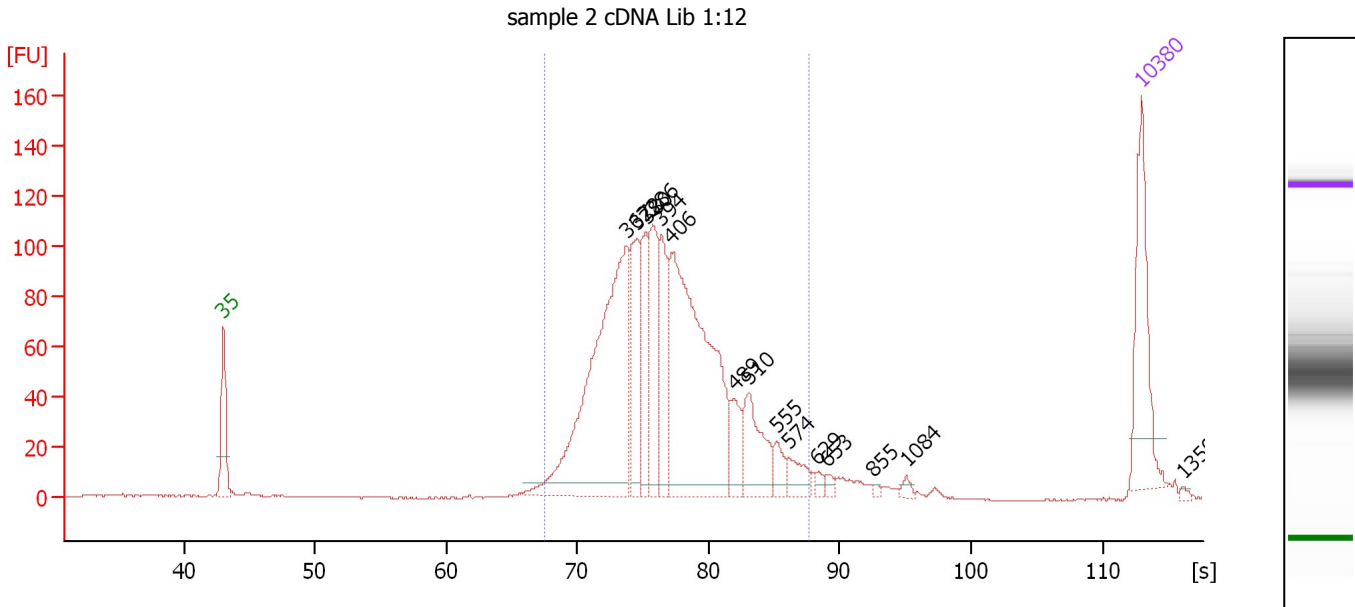
Peak table for Ladder

Peak	Size [bp]	Conc. [pg/μl]	Molarity [pmol/l]	Observations
1	35	125.00	5,411.3	Lower Marker
2	50	150.00	4,545.5	Ladder Peak
3	100	150.00	2,272.7	Ladder Peak
4	150	150.00	1,515.2	Ladder Peak
5	200	150.00	1,136.4	Ladder Peak
6	300	150.00	757.6	Ladder Peak
7	400	150.00	568.2	Ladder Peak
8	500	150.00	454.5	Ladder Peak
9	600	150.00	378.8	Ladder Peak
10	700	150.00	324.7	Ladder Peak
11	1,000	150.00	227.3	Ladder Peak
12	2,000	150.00	113.6	Ladder Peak
13	3,000	150.00	75.8	Ladder Peak
14	7,000	150.00	32.5	Ladder Peak
15	10,380	75.00	10.9	Upper Marker

Assay Class: High Sensitivity DNA Assay
 Data Path: C:\...ents and Settings\Bioanalyzer\2013-04-18\2013-04-18_001.xad

Created: 4/18/2013 4:30:34 PM
 Modified: 4/18/2013 5:16:07 PM

Electropherogram Summary Continued ...



Overall Results for sample 1 : sample 2 cDNA Lib 1:12

Number of peaks found: 15 Corr. Area 1: 1,532.5
 Noise: 0.2

Peak table for sample 1 : sample 2 cDNA Lib 1:12

Peak	Size [bp]	Conc. [pg/μl]	Molarity [pmol/l]	Observations
1	35	125.00	5,411.3	Lower Marker
2	362	350.24	1,467.9	
3	372	85.06	346.8	
4	380	67.39	268.9	
5	386	90.59	355.3	
6	394	71.27	273.8	
7	406	331.58	1,238.5	
8	489	34.45	106.8	
9	510	62.33	185.2	
10	555	16.75	45.8	
11	574	19.85	52.4	
12	629	5.63	13.6	
13	653	4.76	11.0	
14	855	2.53	4.5	
15	1,084	4.38	6.1	
16	10,380	75.00	10.9	Upper Marker
17	13,500	0.00	0.0	

Region table for sample 1 : sample 2 cDNA Lib 1:12

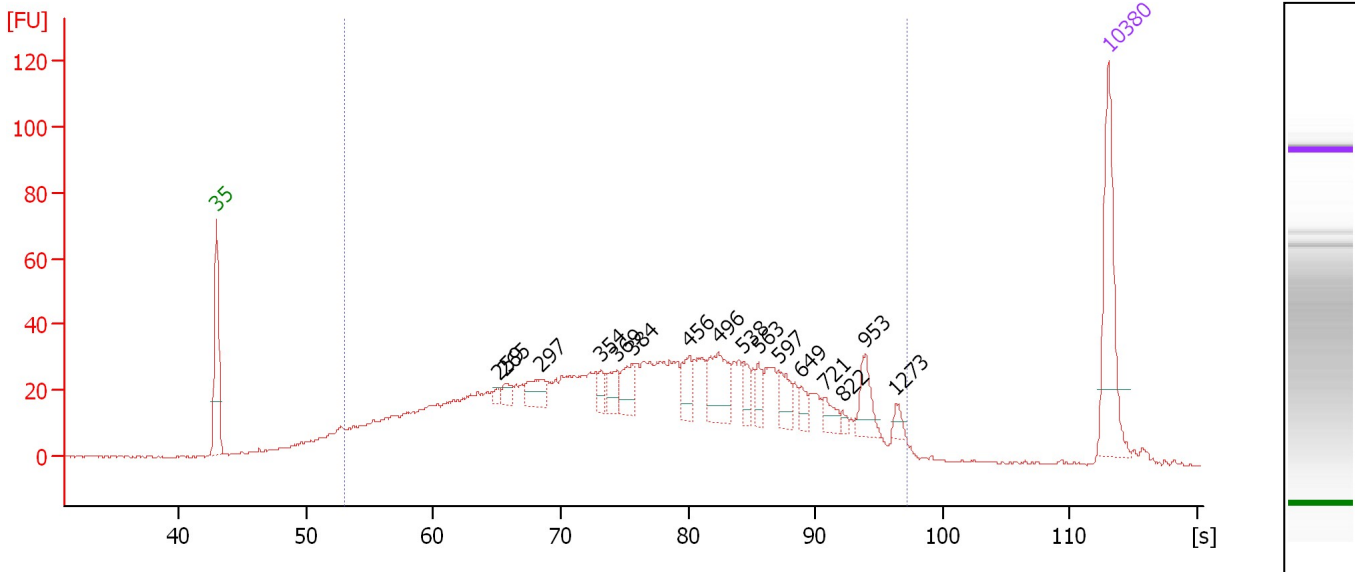
From [s]	To [s]	Average Size [bp]	Molarity [pmol/l]	Conc. [pg/μl]	Corr. Area % of Total	Size distribution in CV [%]	Color
67.44	87.61	406	4,415.4	1,147.95	1,532.5 94	16.0	Blue

Assay Class: High Sensitivity DNA Assay
 Data Path: C:\...ents and Settings\Bioanalyzer\2013-04-18\2013-04-18_001.xad

Created: 4/18/2013 4:30:34 PM
 Modified: 4/18/2013 5:16:07 PM

Electropherogram Summary Continued ...

sample 30 Resoni 1:6 [17Cycles]



Overall Results for sample 2 : sample 30 Resoni 1:6

Number of peaks found: 16 Corr. Area 1: 1,378.3
 Noise: 0.3

Peak table for sample 2 : sample 30 Resoni 1:6

Peak	Size [bp]	Conc. [pg/µl]	Molarity [pmol/l]	Observations
1	35	125.00	5,411.3	Lower Marker
2	259	5.39	31.6	
3	265	10.95	62.5	
4	297	26.67	136.2	
5	354	11.82	50.6	
6	369	19.05	78.2	
7	384	25.55	100.7	
8	456	24.50	81.4	
9	496	50.76	155.0	
10	538	16.59	46.7	
11	563	12.84	34.6	
12	597	19.01	48.2	
13	649	10.73	25.0	
14	721	13.79	29.0	
15	822	4.09	7.5	
16	953	24.53	39.0	
17	1,273	7.05	8.4	
18	10,380	75.00	10.9	Upper Marker

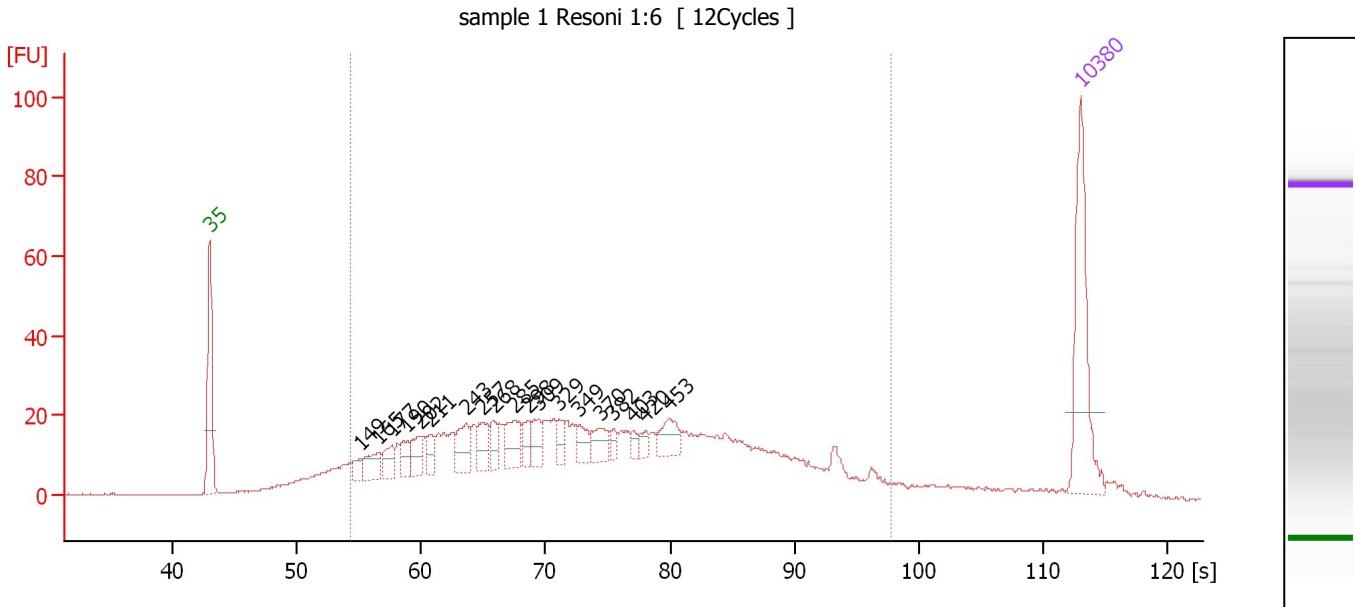
Region table for sample 2 : sample 30 Resoni 1:6

From [s]	To [s]	Average Size [bp]	Molarity [pmol/l]	Conc. [pg/µl]	Corr. Area % of Total	Size distribution in CV [%]	Color
53.05	97.27	451	7,463.5	1,550.67	1,378.3 93	51.3	Blue

Assay Class: High Sensitivity DNA Assay
 Data Path: C:\...ents and Settings\Bioanalyzer\2013-04-18\2013-04-18_001.xad

Created: 4/18/2013 4:30:34 PM
 Modified: 4/18/2013 5:16:07 PM

Electropherogram Summary Continued ...



Overall Results for sample 3 : sample 1 Resoni 1:6

Number of peaks found: 19 Corr. Area 1: 890.8
 Noise: 0.2

Peak table for sample 3 : sample 1 Resoni 1:6

Peak	Size [bp]	Conc. [pg/μl]	Molarity [pmol/l]	Observations
1	35	125.00	5,411.3	Lower Marker
2	149	12.90	131.0	
3	165	25.10	230.7	
4	177	21.14	181.3	
5	190	17.94	142.8	
6	202	23.81	178.7	
7	211	15.69	112.4	
8	243	29.12	181.9	
9	257	23.07	135.7	
10	268	18.31	103.7	
11	285	29.24	155.3	
12	298	16.42	83.6	
13	309	18.09	88.8	
14	329	11.22	51.6	
15	349	16.78	72.9	
16	370	18.33	75.1	
17	382	7.16	28.4	
18	403	6.09	22.9	
19	420	8.05	29.0	
20	453	21.70	72.6	
21	10,380	75.00	10.9	Upper Marker

Region table for sample 3 : sample 1 Resoni 1:6

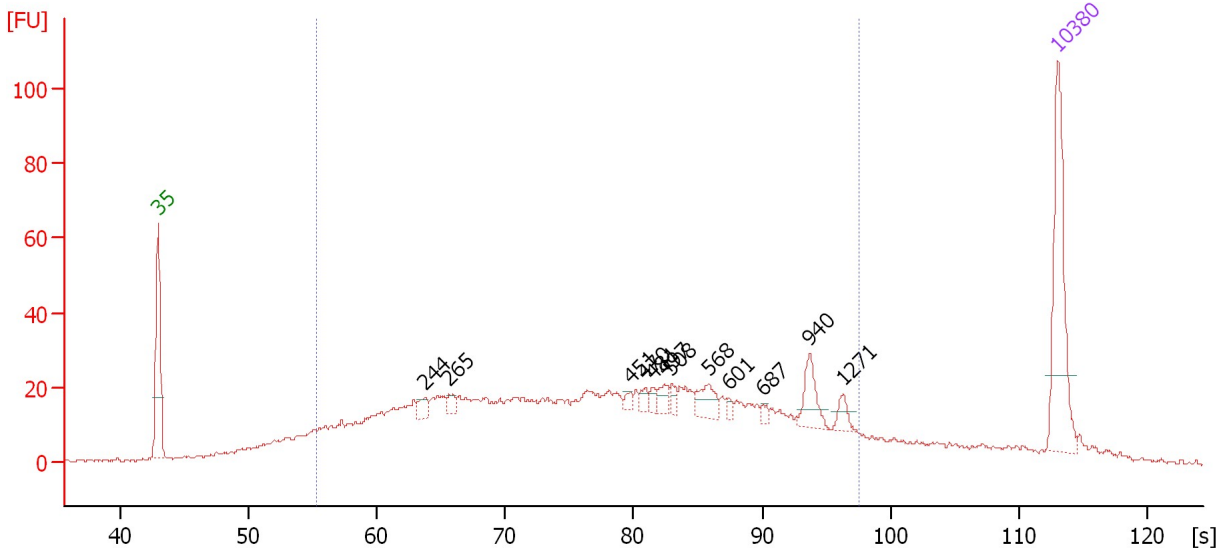
From [s]	To [s]	Average Size [bp]	Molarity [pmol/l]	Conc. [pg/μl]	Corr. Area % of Total	Size distribution in CV [%]	Color
54.36	97.78	413	5,592.5	1,094.58	890.8 87	53.9	Blue

Assay Class: High Sensitivity DNA Assay
 Data Path: C:\...ents and Settings\Bioanalyzer\2013-04-18\2013-04-18_001.xad

Created: 4/18/2013 4:30:34 PM
 Modified: 4/18/2013 5:16:07 PM

Electropherogram Summary Continued ...

sample 3 Resoni 1:6 [13Cycles]



Overall Results for sample 4 : sample 3 Resoni 1:6

Number of peaks found: 12 Corr. Area 1: 932.5
 Noise: 0.4

Peak table for sample 4 : sample 3 Resoni 1:6

Peak	Size [bp]	Conc. [pg/μl]	Molarity [pmol/l]	Observations
1	35	125.00	5,411.3	Lower Marker
2	244	10.54	65.3	
3	265	8.46	48.4	
4	451	5.04	16.9	
5	470	6.16	19.9	
6	481	5.87	18.5	
7	497	9.00	27.5	
8	508	6.39	19.0	
9	568	19.46	51.9	
10	601	4.01	10.1	
11	687	4.44	9.8	
12	940	23.34	37.6	
13	1,271	8.49	10.1	
14	10,380	75.00	10.9	Upper Marker

Region table for sample 4 : sample 3 Resoni 1:6

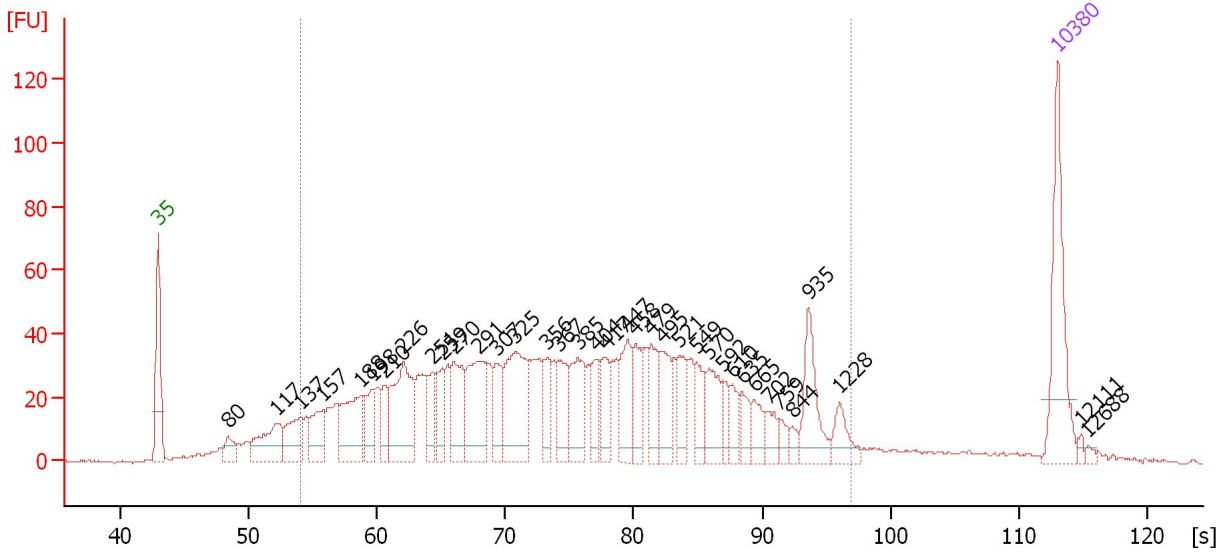
From [s]	To [s]	Average Size [bp]	Molarity [pmol/l]	Conc. [pg/μl]	Corr. Area % of Total	Size distribution in CV [%]	Color
55.32	97.55	482	5,340.7	1,170.97	932.5 84	55.0	■

Assay Class: High Sensitivity DNA Assay
 Data Path: C:\...ents and Settings\Bioanalyzer\2013-04-18\2013-04-18_001.xad

Created: 4/18/2013 4:30:34 PM
 Modified: 4/18/2013 5:16:07 PM

Electropherogram Summary Continued ...

sample 6 Resoni 1:6 [13Cycles]



Overall Results for sample 5 : sample 6 Resoni 1:6

Number of peaks found: 37 Corr. Area 1: 1,579.5
 Noise: 0.6

Peak table for sample 5 : sample 6 Resoni 1:6

Peak	Size [bp]	Conc. [pg/μl]	Molarity [pmol/l]	Observations
1	35	125.00	5,411.3	Lower Marker
2	80	21.77	412.8	
3	117	67.59	878.9	
4	137	50.19	554.0	
5	157	45.48	440.1	
6	188	80.42	646.5	
7	198	32.18	245.7	
8	210	29.35	212.2	
9	226	107.27	720.1	
10	251	38.01	229.5	
11	259	33.68	197.0	
12	270	61.82	347.4	
13	291	86.33	449.7	
14	307	34.02	168.1	
15	325	103.11	480.5	
16	356	34.11	145.2	
17	367	40.54	167.5	
18	385	54.48	214.3	
19	404	28.51	106.8	
20	417	30.64	111.3	
21	447	47.43	160.9	
22	458	35.16	116.4	
23	479	40.20	127.3	
24	495	41.46	126.8	
25	521	33.47	97.3	
26	549	22.99	63.5	

Assay Class: High Sensitivity DNA Assay
 Data Path: C:\...ents and Settings\Bioanalyzer\2013-04-18\2013-04-18_001.xad


Created: 4/18/2013 4:30:34 PM
 Modified: 4/18/2013 5:16:07 PM

Electropherogram Summary Continued ...

... Peak table for sample 5 : sample 6 Resoni 1:6

Peak	Size [bp]	Conc. [pg/µl]	Molarity [pmol/l]	Observations
27	570	38.71	102.9	
28	592	15.64	40.0	
29	610	18.76	46.6	
30	635	16.55	39.5	
31	665	18.28	41.7	
32	702	17.05	36.8	
33	759	11.64	23.2	
34	844	7.06	12.7	
35	935	50.18	81.3	
36	1,228	20.62	25.4	
37	10,380	75.00	10.9	Upper Marker
38	12,111	0.00	0.0	
39	12,688	0.00	0.0	

Region table for sample 5 : sample 6 Resoni 1:6

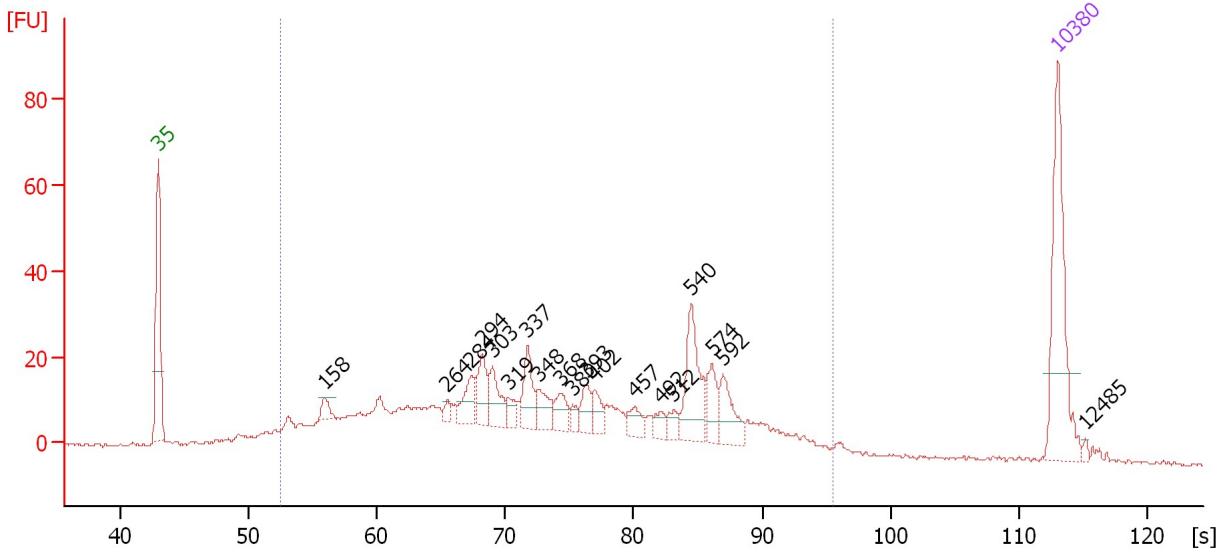
From [s]	To [s]	Average Size [bp]	Molarity [pmol/l]	Conc. [pg/µl]	Corr. Area % of Total	Size distribution in CV [%]	Color
54.12	96.92	429	8,167.3	1,659.27	1,579.5 89	51.4	

Assay Class: High Sensitivity DNA Assay
 Data Path: C:\...ents and Settings\Bioanalyzer\2013-04-18\2013-04-18_001.xad

Created: 4/18/2013 4:30:34 PM
 Modified: 4/18/2013 5:16:07 PM

Electropherogram Summary Continued ...

sample 9 Resoni 1:6 [12Cycles]



Overall Results for sample 6 : sample 9 Resoni 1:6

Number of peaks found: 19 Corr. Area 1: 656.7
 Noise: 0.4

Peak table for sample 6 : sample 9 Resoni 1:6

Peak	Size [bp]	Conc. [pg/μl]	Molarity [pmol/l]	Observations
1	35	125.00	5,411.3	Lower Marker
2	158	10.96	105.2	
3	264	6.53	37.5	
4	284	23.42	124.9	
5	294	28.18	145.3	
6	303	25.80	128.8	
7	319	10.18	48.4	
8	337	29.76	133.9	
9	348	18.78	81.7	
10	368	16.72	68.9	
11	380	6.95	27.7	
12	393	15.60	60.2	
13	402	13.43	50.6	
14	457	12.35	41.0	
15	492	8.67	26.7	
16	512	8.81	26.1	
17	540	50.89	142.7	
18	574	20.41	53.9	
19	592	25.79	66.0	
20	10,380	75.00	10.9	Upper Marker
21	12,485	0.00	0.0	

Region table for sample 6 : sample 9 Resoni 1:6

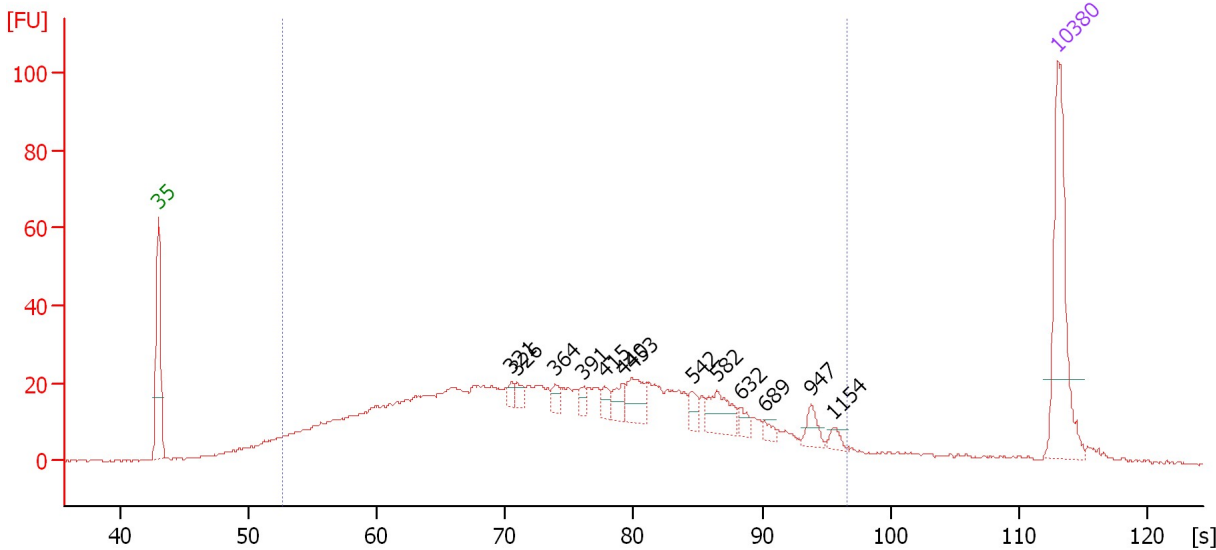
From [s]	To [s]	Average Size [bp]	Molarity [pmol/l]	Conc. [pg/μl]	Corr. Area % of Total	Size distribution in CV [%]	Color
52.46	95.48	397	4,527.8	865.28	656.7 93	44.0	Blue

Assay Class: High Sensitivity DNA Assay
 Data Path: C:\...ents and Settings\Bioanalyzer\2013-04-18\2013-04-18_001.xad

Created: 4/18/2013 4:30:34 PM
 Modified: 4/18/2013 5:16:07 PM

Electropherogram Summary Continued ...

sample 11 Resoni 1:6 [15Cycles]



Overall Results for sample 7 : sample 11 Resoni 1:6

Number of peaks found: 13 Corr. Area 1: 944.7
 Noise: 0.3

Peak table for sample 7 : sample 11 Resoni 1:6

Peak	Size [bp]	Conc. [pg/μl]	Molarity [pmol/l]	Observations
1	35	125.00	5,411.3	Lower Marker
2	321	5.82	27.5	
3	326	7.74	35.9	
4	364	7.47	31.1	
5	391	6.74	26.2	
6	415	8.65	31.6	
7	440	11.94	41.2	
8	453	23.95	80.2	
9	542	9.68	27.1	
10	582	25.60	66.6	
11	632	6.83	16.4	
12	689	5.07	11.1	
13	947	10.58	16.9	
14	1,154	5.46	7.2	
15	10,380	75.00	10.9	Upper Marker

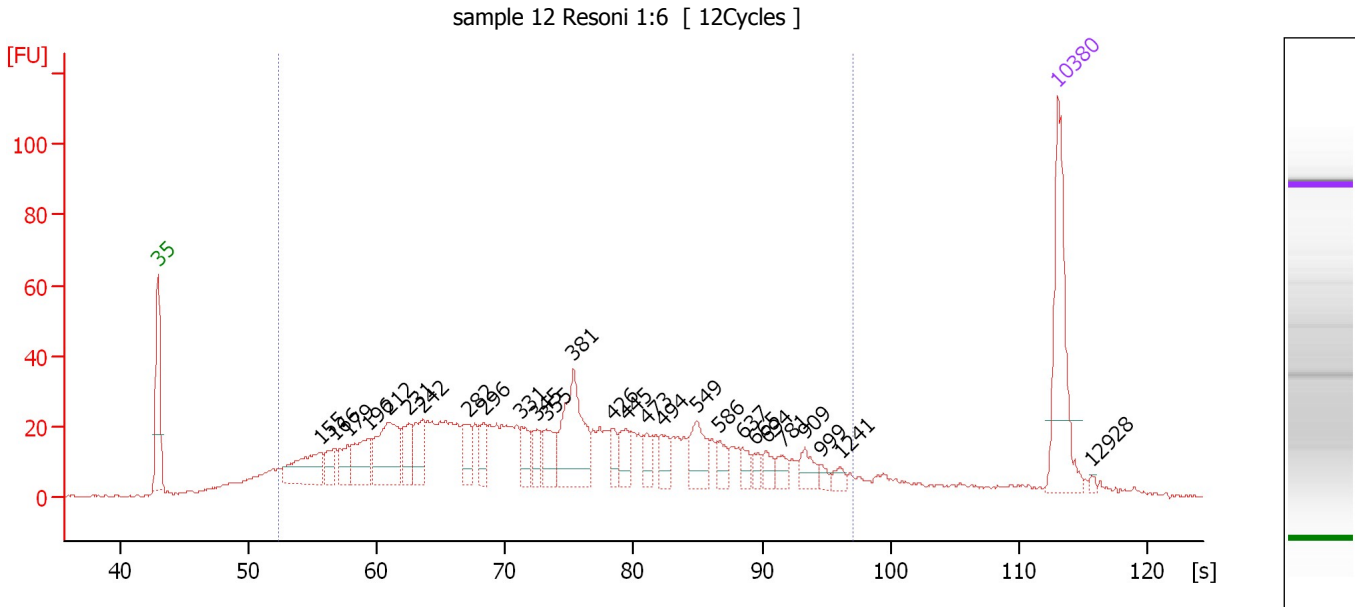
Region table for sample 7 : sample 11 Resoni 1:6

From [s]	To [s]	Average Size [bp]	Molarity [pmol/l]	Conc. [pg/μl]	Corr. Area	% of Total	Size distribution in CV [%]	Color
52.66	96.52	412	5,617.3	1,088.99	944.7	91	50.1	Blue

Assay Class: High Sensitivity DNA Assay
 Data Path: C:\...ents and Settings\Bioanalyzer\2013-04-18\2013-04-18_001.xad

Created: 4/18/2013 4:30:34 PM
 Modified: 4/18/2013 5:16:07 PM

Electropherogram Summary Continued ...



Overall Results for sample 8 : sample 12 Resoni 1:6

Number of peaks found: 27 Corr. Area 1: 1,059.6
 Noise: 0.4

Peak table for sample 8 : sample 12 Resoni 1:6

Peak	Size [bp]	Conc. [pg/μl]	Molarity [pmol/l]	Observations
1	35	125.00	5,411.3	Lower Marker
2	155	58.59	574.6	
3	166	21.29	194.0	
4	179	24.68	209.5	
5	196	43.00	332.6	
6	212	77.70	554.2	
7	231	31.26	205.0	
8	242	34.00	212.9	
9	282	25.11	134.7	
10	296	20.38	104.4	
11	331	18.71	85.6	
12	345	16.38	71.9	
13	355	27.19	116.2	
14	381	83.85	333.5	
15	426	14.37	51.1	
16	445	19.17	65.3	
17	473	13.87	44.4	
18	494	16.94	52.0	
19	549	31.00	85.6	
20	586	14.05	36.3	
21	637	10.10	24.0	
22	665	8.28	18.9	
23	694	10.65	23.2	
24	781	9.99	19.4	
25	909	14.40	24.0	
26	999	4.71	7.1	

Assay Class: High Sensitivity DNA Assay
Data Path: C:\...ents and Settings\Bioanalyzer\2013-04-18\2013-04-18_001.xad

Created: 4/18/2013 4:30:34 PM
Modified: 4/18/2013 5:16:07 PM

Electropherogram Summary Continued ...**... Peak table for sample 8 : sample 12 Resoni 1:6**

Peak	Size [bp]	Conc. [pg/μl]	Molarity [pmol/l]	Observations
27	1,241	5.88	7.2	
28	10,380	75.00	10.9	Upper Marker
29	12,928	0.00	0.0	

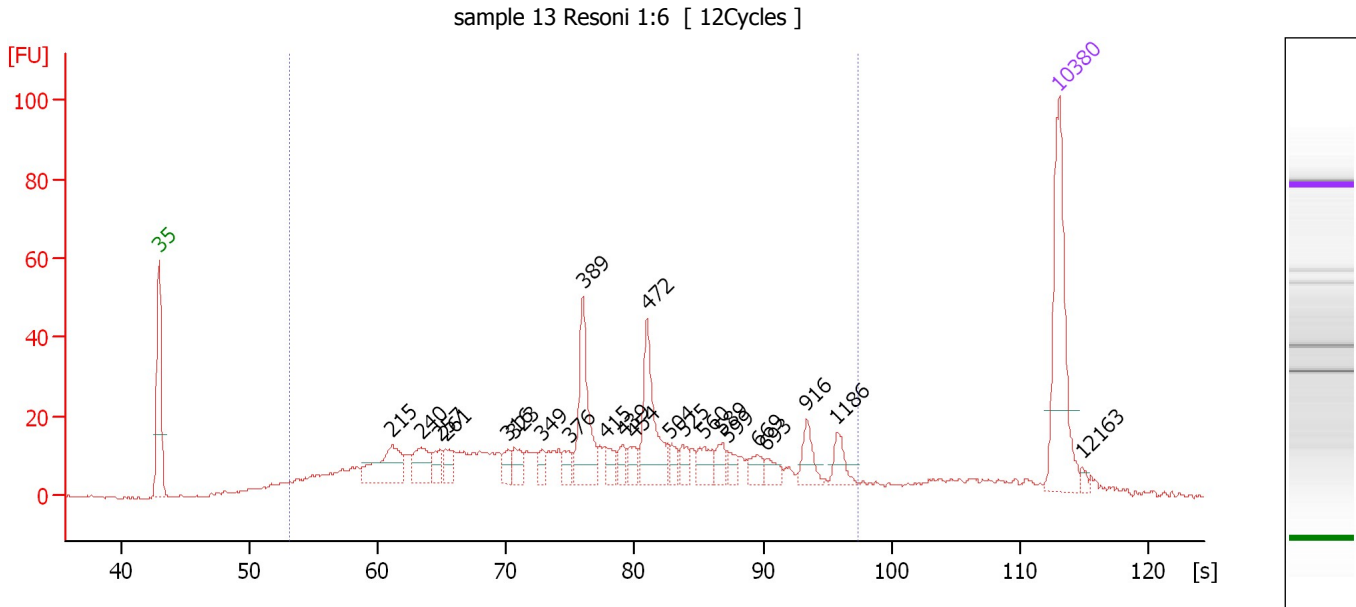
Region table for sample 8 : sample 12 Resoni 1:6

From [s]	To [s]	Average Size [bp]	Molarity [pmol/l]	Conc. [pg/μl]	Corr. Area % of Total	Size distribution in CV [%]	Color	
52.38	97.00	408	6,597.2	1,225.18	1,059.6	88	54.1	

Assay Class: High Sensitivity DNA Assay
 Data Path: C:\...ents and Settings\Bioanalyzer\2013-04-18\2013-04-18_001.xad

Created: 4/18/2013 4:30:34 PM
 Modified: 4/18/2013 5:16:07 PM

Electropherogram Summary Continued ...



Overall Results for sample 9 : sample 13 Resoni 1:6

Number of peaks found: 23 Corr. Area 1: 686.3
 Noise: 0.4

Peak table for sample 9 : sample 13 Resoni 1:6

Peak	Size [bp]	Conc. [pg/μl]	Molarity [pmol/l]	Observations
1	35	125.00	5,411.3	Lower Marker
2	215	51.29	360.7	
3	240	27.36	172.8	
4	257	14.14	83.5	
5	261	12.64	73.3	
6	316	10.04	48.1	
7	323	15.45	72.4	
8	349	8.76	38.0	
9	376	9.98	40.2	
10	389	63.57	247.5	
11	415	11.99	43.8	
12	439	9.75	33.6	
13	454	11.60	38.7	
14	472	62.58	201.0	
15	504	10.08	30.3	
16	525	10.66	30.8	
17	560	15.23	41.2	
18	589	11.65	30.0	
19	599	8.49	21.5	
20	669	10.95	24.8	
21	693	9.70	21.2	
22	916	16.90	28.0	
23	1,186	13.21	16.9	
24	10,380	75.00	10.9	Upper Marker
25	12,163	0.00	0.0	

Assay Class: High Sensitivity DNA Assay
Data Path: C:\...ents and Settings\Bioanalyzer\2013-04-18\2013-04-18_001.xad

Created: 4/18/2013 4:30:34 PM
Modified: 4/18/2013 5:16:07 PM

Electropherogram Summary Continued ...

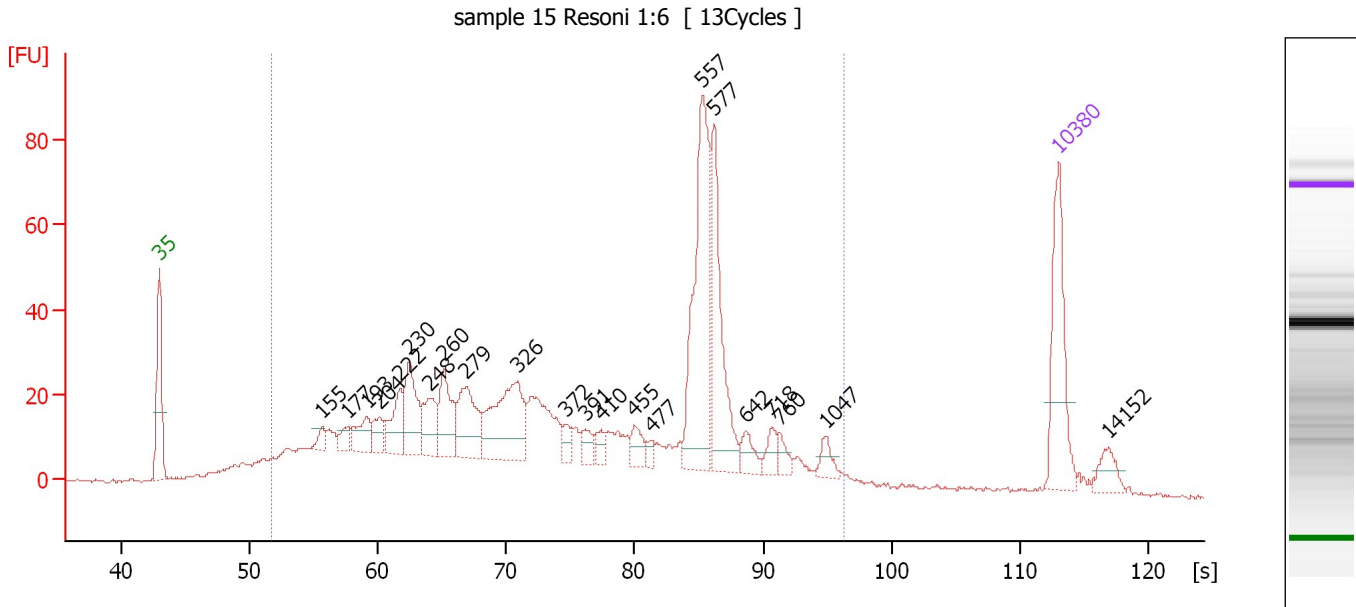
... Region table for sample 9 : sample 13 Resoni 1:6

From [s]	To [s]	Average Size [bp]	Molarity [pmol/l]	Conc. [pg/μl]	Corr. Area % of Total	Size distribution in CV [%]	Color
53.07	97.34	459	4,017.3	844.74	686.3 88	53.7	

Assay Class: High Sensitivity DNA Assay
 Data Path: C:\...ents and Settings\Bioanalyzer\2013-04-18\2013-04-18_001.xad

Created: 4/18/2013 4:30:34 PM
 Modified: 4/18/2013 5:16:07 PM

Electropherogram Summary Continued ...



Overall Results for sample 10 : sample 15 Resoni 1:6

Number of peaks found: 22 Corr. Area 1: 1,116.3
 Noise: 0.5

Peak table for sample 10 : sample 15 Resoni 1:6

Peak	Size [bp]	Conc. [pg/μl]	Molarity [pmol/l]	Observations
1	35	125.00	5,411.3	Lower Marker
2	155	11.93	116.6	
3	177	14.34	123.0	
4	193	33.43	262.2	
5	204	21.72	161.3	
6	222	42.81	292.3	
7	230	67.71	445.5	
8	248	41.85	256.1	
9	260	58.97	343.5	
10	279	70.61	382.8	
11	326	113.96	529.6	
12	372	12.84	52.3	
13	391	14.97	58.0	
14	410	11.80	43.6	
15	455	18.28	60.8	
16	477	7.32	23.2	
17	557	192.03	522.3	
18	577	120.75	317.2	
19	642	17.84	42.1	
20	718	15.23	32.1	
21	760	11.48	22.9	
22	1,047	12.67	18.3	
23	10,380	75.00	10.9	Upper Marker
24	14,152	0.00	0.0	

Assay Class: High Sensitivity DNA Assay
Data Path: C:\...ents and Settings\Bioanalyzer\2013-04-18\2013-04-18_001.xad

Created: 4/18/2013 4:30:34 PM
Modified: 4/18/2013 5:16:07 PM

Electropherogram Summary Continued ...

... Region table for sample 10 : sample 15 Resoni 1:6

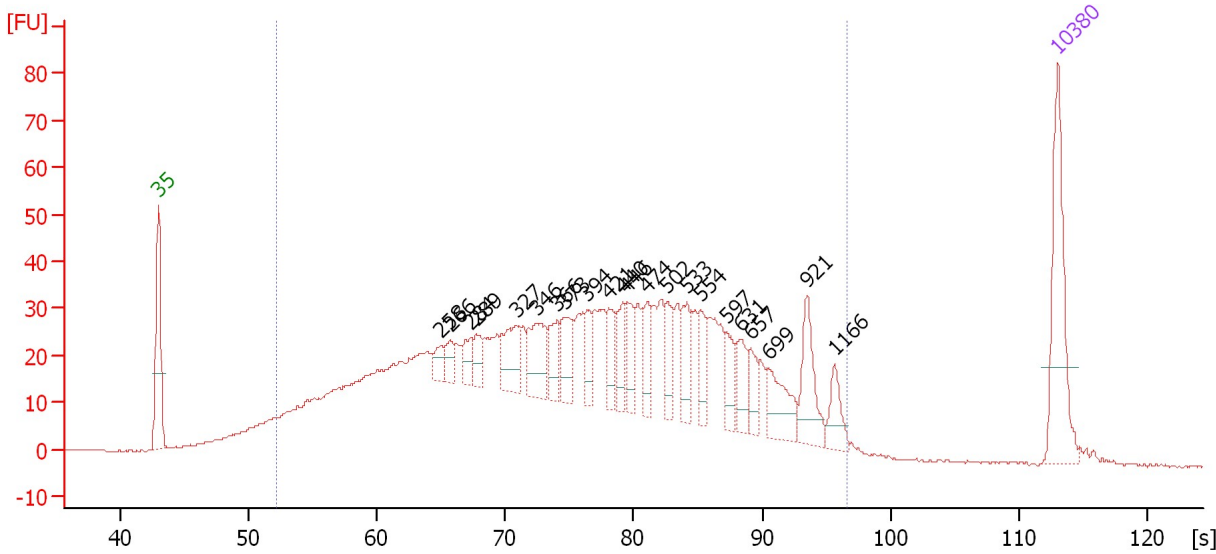
From [s]	To [s]	Average Size [bp]	Molarity [pmol/l]	Conc. [pg/μl]	Corr. Area % of Total	Size distribution in CV [%]	Color
51.79	96.33	422	9,191.2	1,769.46	1,116.3 91	47.6	■

Assay Class: High Sensitivity DNA Assay
 Data Path: C:\...ents and Settings\Bioanalyzer\2013-04-18\2013-04-18_001.xad

Created: 4/18/2013 4:30:34 PM
 Modified: 4/18/2013 5:16:07 PM

Electropherogram Summary Continued ...

sample 16 Resoni 1:6 [13Cycles]



Overall Results for sample 11 : sample 16 Resoni 1:6

Number of peaks found: 22 Corr. Area 1: 1,390.1
 Noise: 0.2

Peak table for sample 11 : sample 16 Resoni 1:6


Peak	Size [bp]	Conc. [pg/μl]	Molarity [pmol/l]	Observations
1	35	125.00	5,411.3	Lower Marker
2	258	15.48	90.8	
3	266	14.57	82.9	
4	284	18.19	97.0	
5	289	18.02	94.5	
6	327	44.78	207.5	
7	346	48.50	212.5	
8	366	25.64	106.3	
9	373	34.21	139.1	
10	394	22.70	87.2	
11	421	25.05	90.1	
12	440	25.84	88.9	
13	446	25.08	85.1	
14	474	26.92	86.1	
15	502	25.30	76.4	
16	533	31.78	90.4	
17	554	26.23	71.7	
18	597	21.79	55.3	
19	631	26.11	62.7	
20	657	18.89	43.5	
21	699	40.05	86.8	
22	921	43.67	71.8	
23	1,166	20.92	27.2	
24	10,380	75.00	10.9	Upper Marker

Assay Class: High Sensitivity DNA Assay
Data Path: C:\...ents and Settings\Bioanalyzer\2013-04-18\2013-04-18_001.xad

Created: 4/18/2013 4:30:34 PM
Modified: 4/18/2013 5:16:07 PM

Electropherogram Summary Continued ...

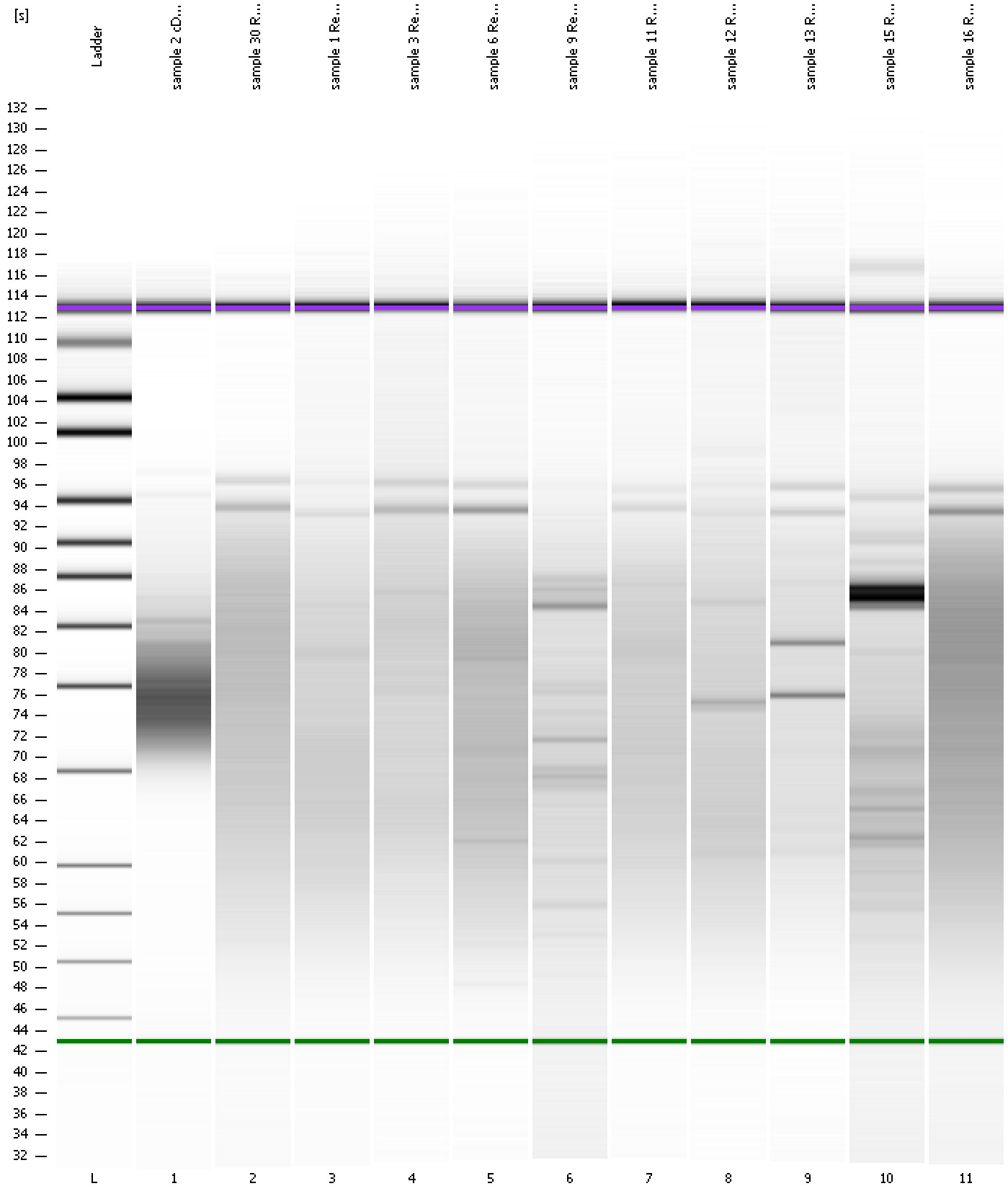
... Region table for sample 11 : sample 16 Resoni 1:6

From [s]	To [s]	Average Size [bp]	Molarity [pmol/l]	Conc. [pg/μl]	Corr. Area % of Total	Size distribution in CV [%]	Color
52.20	96.60	439	10,122.0	2,058.60	1,390.1 95	49.4	

Assay Class: High Sensitivity DNA Assay
Data Path: C:\...ents and Settings\Bioanalyzer\2013-04-18\2013-04-18_001.xad

Created: 4/18/2013 4:30:34 PM
Modified: 4/18/2013 5:16:07 PM

Gel Image



Assay Class: High Sensitivity DNA Assay
 Data Path: C:\...ents and Settings\Bioanalyzer\2013-04-18\2013-04-18_001.xad

Created: 4/18/2013 4:30:34 PM
 Modified: 4/18/2013 5:16:07 PM

Run Logbook

Description	Number	Source	Category	Sub Category	Time	Time Zone	User	Host
Run ended on port 1 (Number of wells acquired: 12)		Instrument	Run		4/18/2013 5:11:54 PM	(GMT --07:00) Pacific Standard Time	UC Davis	D8XSMGH1
Run started on port 1 (File: C:\Documents and Settings\Bioanalyzer\2013-04-18\2013-04-18_001.xad)		Instrument	Run		4/18/2013 4:30:39 PM	(GMT --07:00) Pacific Standard Time	UC Davis	D8XSMGH1
Product Number : G2938B		Instrument	Run		4/18/2013 4:30:39 PM	(GMT --07:00) Pacific Standard Time	UC Davis	D8XSMGH1
Name :		Instrument	Run		4/18/2013 4:30:39 PM	(GMT --07:00) Pacific Standard Time	UC Davis	D8XSMGH1
Vendor : Agilent Technologies		Instrument	Run		4/18/2013 4:30:39 PM	(GMT --07:00) Pacific Standard Time	UC Davis	D8XSMGH1
Serial# : DE13701086		Instrument	Run		4/18/2013 4:30:39 PM	(GMT --07:00) Pacific Standard Time	UC Davis	D8XSMGH1
Firmware : C.01.069		Instrument	Run		4/18/2013 4:30:39 PM	(GMT --07:00) Pacific Standard Time	UC Davis	D8XSMGH1
Cartridge : Electrode		Instrument	Run		4/18/2013 4:30:39 PM	(GMT --07:00) Pacific Standard Time	UC Davis	D8XSMGH1