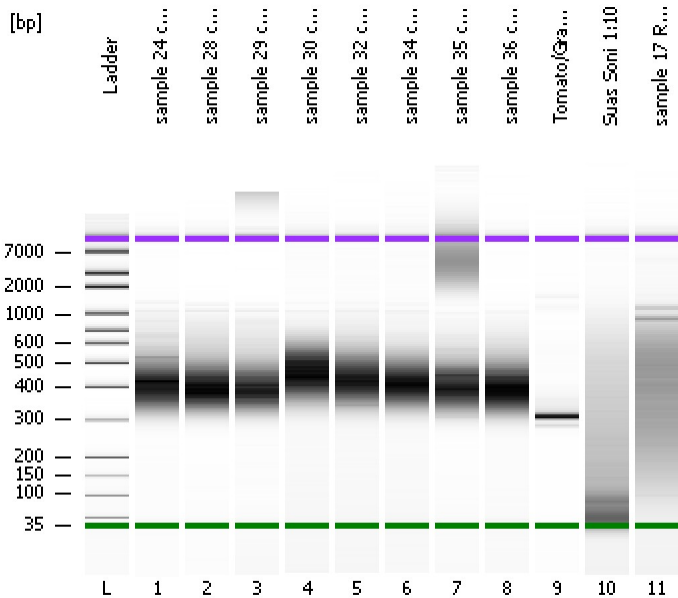


Assay Class: High Sensitivity DNA Assay  
Data Path: C:\...ents and Settings\Bioanalyzer\2013-04-19\2013-04-19\_003.xad

Created: 4/19/2013 2:40:00 PM  
Modified: 4/19/2013 3:26:54 PM

**Electrophoresis File Run Summary**



Instrument Information:

Instrument Name: DE13701086      Firmware: C.01.069  
Serial#: DE13701086      Type: G2938B

Assay Information:

Assay Origin Path: C:\Program Files\Agilent\2100 bioanalyzer\2100 expert\assays\dsDNA\High Sensitivity DNA.xsy  
Assay Class: High Sensitivity DNA Assay  
Version: 1.03  
Assay Comments: Copyright © 2003-2010 Agilent Technologies

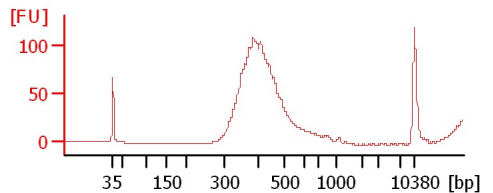
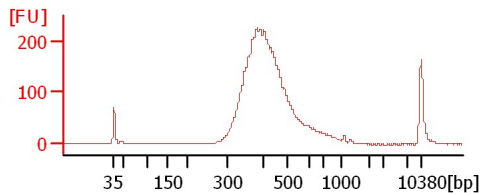
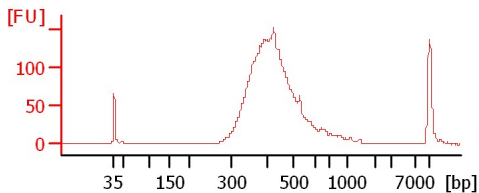
Chip Information:

Chip Lot #:   
Reagent Kit Lot #:   
Chip Comments:

sample 24 cDNA Lib 1:10

sample 28 cDNA Lib 1:4

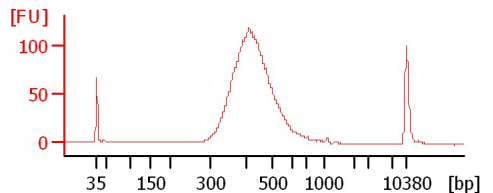
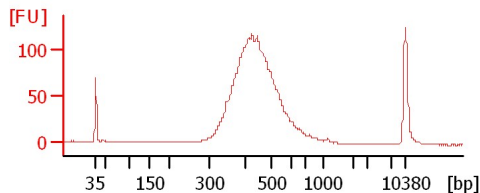
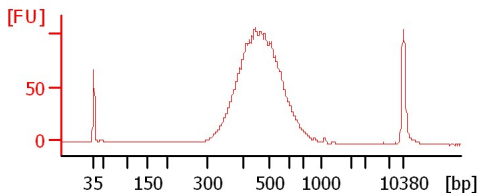
sample 29 cDNA Lib 1:8



sample 30 cDNA Lib 1:7

sample 32 cDNA Lib 1:10

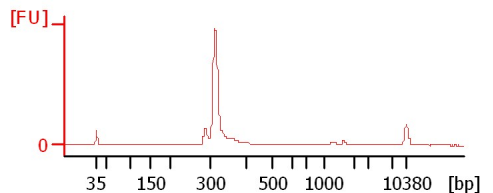
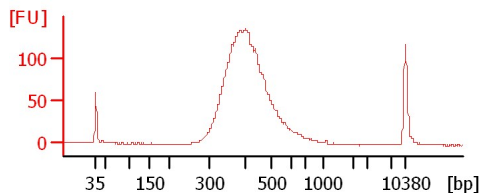
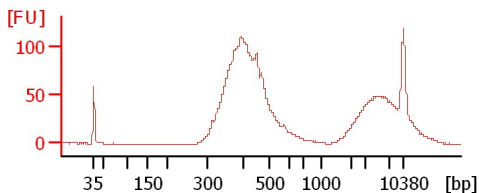
sample 34 cDNA Lib 1:7



sample 35 cDNA Lib 1:7

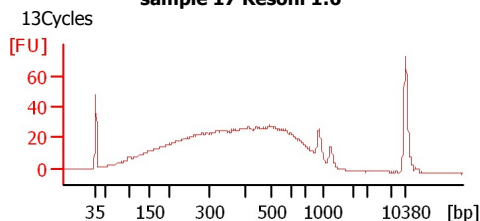
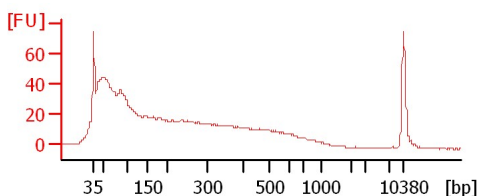
sample 36 cDNA Lib 1:3

Tomato/Grape 16s 1:10



Suas Soni 1:10

sample 17 Resoni 1:6



Assay Class: High Sensitivity DNA Assay  
Data Path: C:\...ents and Settings\Bioanalyzer\2013-04-19\2013-04-19\_003.xad

Created: 4/19/2013 2:40:00 PM  
Modified: 4/19/2013 3:26:54 PM

**Electrophoresis File Run Summary (Chip Summary)**

Sample Name	Sample Comment	Rest. Digest	Status	Observation	Result Label	Result Color
sample 24 cDNA Lib 1:10		<input type="checkbox"/>	✓			
sample 28 cDNA Lib 1:4		<input type="checkbox"/>	✓			
sample 29 cDNA Lib 1:8		<input type="checkbox"/>	✓			
sample 30 cDNA Lib 1:7		<input type="checkbox"/>	✓			
sample 32 cDNA Lib 1:10		<input type="checkbox"/>	✓			
sample 34 cDNA Lib 1:7		<input type="checkbox"/>	✓			
sample 35 cDNA Lib 1:7		<input type="checkbox"/>	✓			
sample 36 cDNA Lib 1:3		<input type="checkbox"/>	✓			
Tomato/Grape 16s 1:10		<input type="checkbox"/>	✓			
Suas Soni 1:10		<input type="checkbox"/>	✓			
sample 17 Resoni 1:6	13Cycles	<input type="checkbox"/>	✓			
Ladder		<input type="checkbox"/>	✓			

**Chip Lot #**

**Reagent Kit Lot #**

**Chip Comments :**

Assay Class: High Sensitivity DNA Assay  
Data Path: C:\...ents and Settings\Bioanalyzer\2013-04-19\2013-04-19\_003.xad

Created: 4/19/2013 2:40:00 PM  
Modified: 4/19/2013 3:26:54 PM

**Electrophoresis Assay Details**

**General Analysis Settings**

Number of Available Sample and Ladder Wells (Max.) : 12  
Minimum Visible Range [s] : 32  
Maximum Visible Range [s] : 138  
Start Analysis Time Range [s] : 33  
End Analysis Time Range [s] : 137.5  
Ladder Concentration [pg/μl] : 1950  
Uses Standard Area for Ladder Fragments  
Lower Marker Concentration [pg/μl] : 125  
Upper Marker Concentration [pg/μl] : 75  
Used Upper Marker for Quantitation  
Standard Curve Fit is Point to Point  
Show Data Aligned to Lower and Upper Marker

**Integrator Settings**

Integration Start Time [s] : 33.05  
Integration End Time [s] : 137  
Slope Threshold : 0.8  
Height Threshold [FU] : 5  
Area Threshold : 0.1  
Width Threshold [s] : 0.6  
Baseline Plateau [s] : 0.5

**Filter Settings**

Filter Width [s] : 0.5  
Polynomial Order : 4

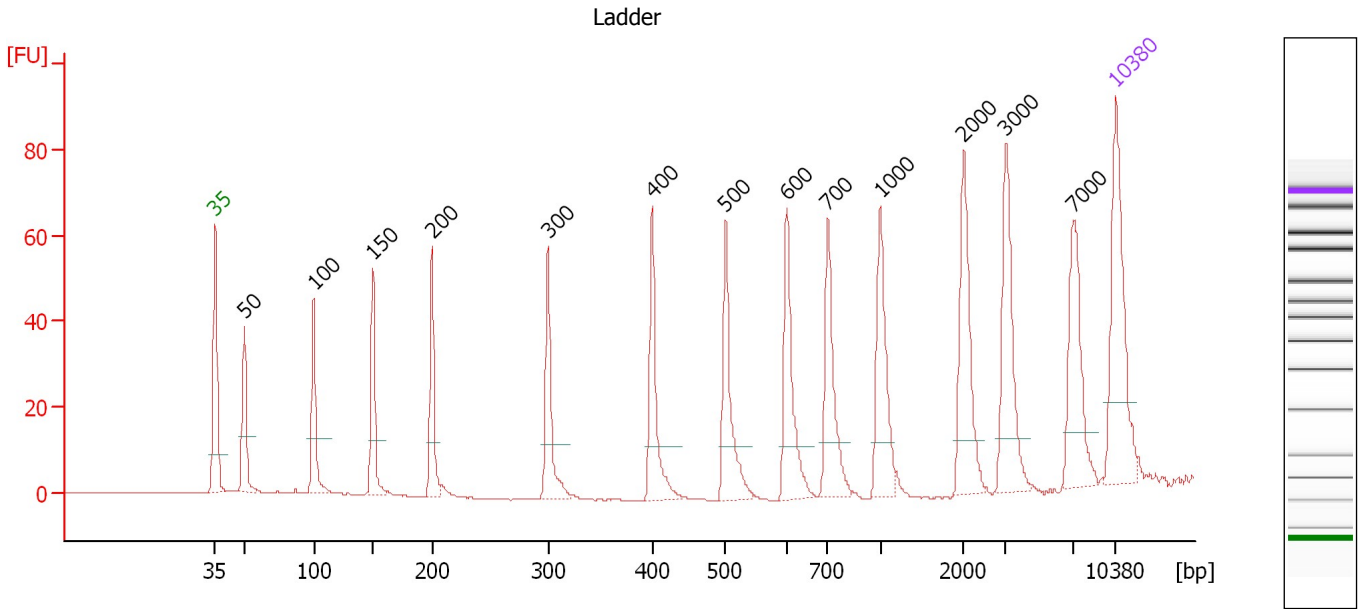
**Ladder**

Ladder Peak	Size	Area
1	35	160
2	50	210
3	100	208
4	150	221
5	200	242
6	300	270
7	400	305
8	500	306
9	600	336
10	700	321
11	1000	366
12	2000	413
13	3000	411
14	7000	400
15	10380	214

Assay Class: High Sensitivity DNA Assay  
 Data Path: C:\...ents and Settings\Bioanalyzer\2013-04-19\2013-04-19\_003.xad

Created: 4/19/2013 2:40:00 PM  
 Modified: 4/19/2013 3:26:54 PM

**Electropherogram Summary**



**Overall Results for Ladder**

Noise: 0.1

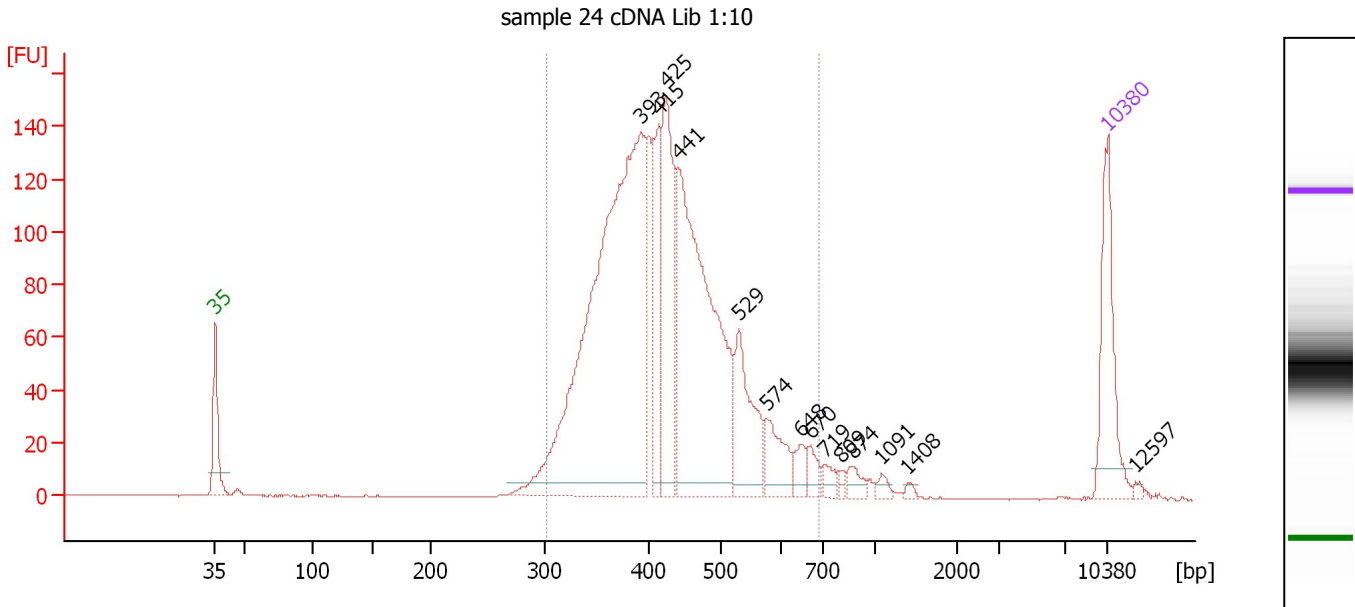
**Peak table for Ladder**

Peak	Size [bp]	Conc. [pg/μl]	Molarity [pmol/l]	Observations
1	35	125.00	5,411.3	Lower Marker
2	50	150.00	4,545.5	Ladder Peak
3	100	150.00	2,272.7	Ladder Peak
4	150	150.00	1,515.2	Ladder Peak
5	200	150.00	1,136.4	Ladder Peak
6	300	150.00	757.6	Ladder Peak
7	400	150.00	568.2	Ladder Peak
8	500	150.00	454.5	Ladder Peak
9	600	150.00	378.8	Ladder Peak
10	700	150.00	324.7	Ladder Peak
11	1,000	150.00	227.3	Ladder Peak
12	2,000	150.00	113.6	Ladder Peak
13	3,000	150.00	75.8	Ladder Peak
14	7,000	150.00	32.5	Ladder Peak
15	10,380	75.00	10.9	Upper Marker

Assay Class: High Sensitivity DNA Assay  
 Data Path: C:\...ents and Settings\Bioanalyzer\2013-04-19\2013-04-19\_003.xad

Created: 4/19/2013 2:40:00 PM  
 Modified: 4/19/2013 3:26:54 PM

**Electropherogram Summary Continued ...**



**Overall Results for sample 1 : sample 24 cDNA Lib 1:10**

Number of peaks found: 14                      Corr. Area 1: 2,094.5  
 Noise: 0.1

**Peak table for sample 1 : sample 24 cDNA Lib 1:10**

Peak	Size [bp]	Conc. [pg/μl]	Molarity [pmol/l]	Observations
1	35	125.00	5,411.3	Lower Marker
2	393	697.91	2,691.4	
3	415	90.73	331.4	
4	425	164.40	586.0	
5	441	380.33	1,306.3	
6	529	94.06	269.2	
7	574	45.19	119.3	
8	648	17.12	40.0	
9	670	15.52	35.1	
10	719	11.56	24.4	
11	809	4.72	8.8	
12	874	11.81	20.5	
13	1,091	6.10	8.5	
14	1,408	3.19	3.4	
15	10,380	75.00	10.9	Upper Marker
16	12,597	0.00	0.0	

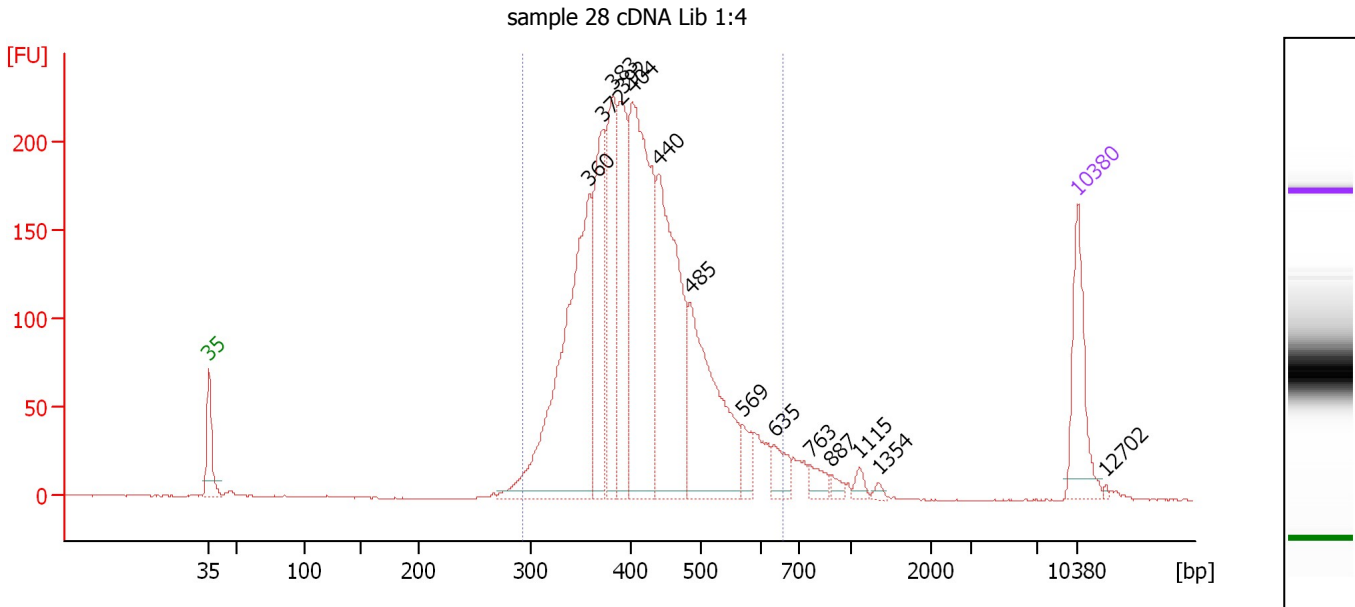
**Region table for sample 1 : sample 24 cDNA Lib 1:10**

From [bp]	To [bp]	Average Size [bp]	Molarity [pmol/l]	Conc. [pg/μl]	Corr. Area	% of Total	Size distribution in CV [%]	Color
301	689	429	5,981.2	1,632.83	2,094.5	94	17.6	Blue

Assay Class: High Sensitivity DNA Assay  
 Data Path: C:\...ents and Settings\Bioanalyzer\2013-04-19\2013-04-19\_003.xad

Created: 4/19/2013 2:40:00 PM  
 Modified: 4/19/2013 3:26:54 PM

**Electropherogram Summary Continued ...**



**Overall Results for sample 2 : sample 28 cDNA Lib 1:4**

Number of peaks found: 14                      Corr. Area 1: 3,141.6  
 Noise: 0.2

**Peak table for sample 2 : sample 28 cDNA Lib 1:4**

Peak	Size [bp]	Conc. [pg/μl]	Molarity [pmol/l]	Observations
1	35	125.00	5,411.3	Lower Marker
2	360	446.86	1,882.6	
3	372	193.31	787.6	
4	383	179.56	711.3	
5	392	167.46	647.2	
6	404	385.36	1,445.9	
7	440	320.25	1,103.0	
8	485	243.47	760.6	
9	569	29.08	77.4	
10	635	30.33	72.4	
11	763	19.11	38.0	
12	887	8.75	15.0	
13	1,115	9.00	12.2	
14	1,354	4.41	4.9	
15	10,380	75.00	10.9	Upper Marker
16	12,702	0.00	0.0	

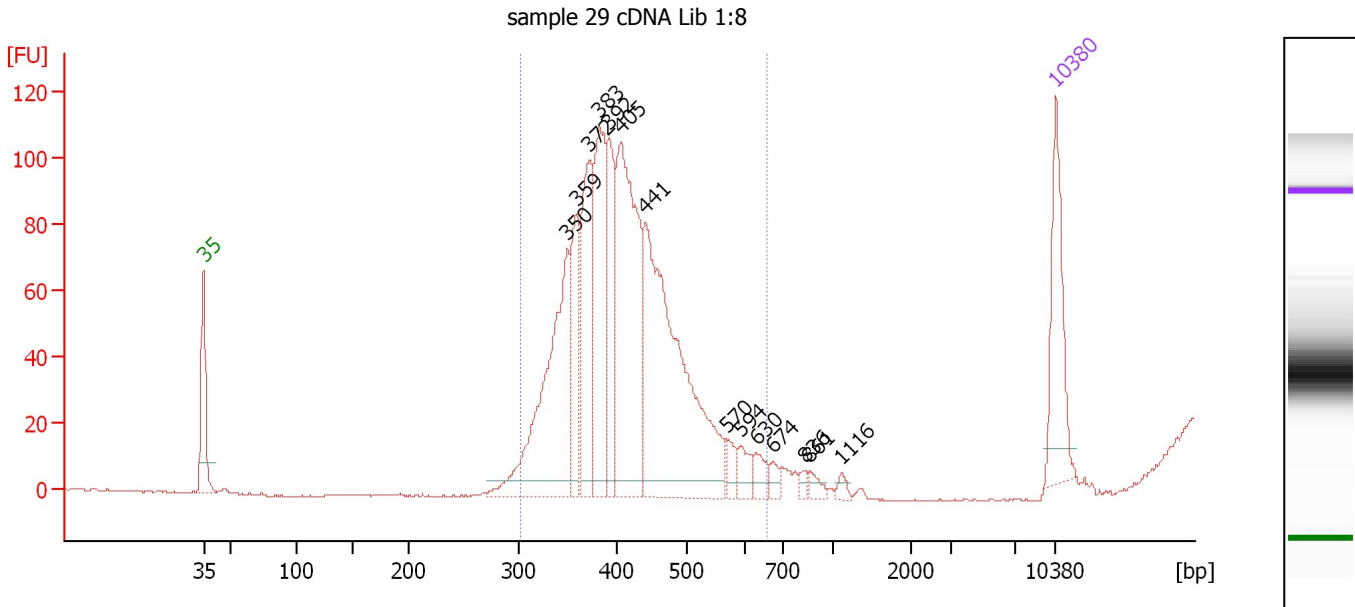
**Region table for sample 2 : sample 28 cDNA Lib 1:4**

From [bp]	To [bp]	Average Size [bp]	Molarity [pmol/l]	Conc. [pg/μl]	Corr. Area	% of Total	Size distribution in CV [%]	Color
293	655	420	7,483.2	2,008.87	3,141.6	95	16.7	Blue

Assay Class: High Sensitivity DNA Assay  
 Data Path: C:\...ents and Settings\Bioanalyzer\2013-04-19\2013-04-19\_003.xad

Created: 4/19/2013 2:40:00 PM  
 Modified: 4/19/2013 3:26:54 PM

**Electropherogram Summary Continued ...**



**Overall Results for sample 3 : sample 29 cDNA Lib 1:8**

Number of peaks found: 14                      Corr. Area 1: 1,135.0  
 Noise: 0.3

**Peak table for sample 3 : sample 29 cDNA Lib 1:8**

Peak	Size [bp]	Conc. [pg/μl]	Molarity [pmol/l]	Observations
1	35	125.00	5,411.3	Lower Marker
2	350	251.53	1,088.2	
3	359	92.48	390.4	
4	372	141.18	575.2	
5	383	161.39	638.9	
6	392	98.94	381.9	
7	405	272.93	1,019.9	
8	441	377.79	1,296.7	
9	570	14.42	38.3	
10	594	18.69	47.7	
11	630	16.92	40.7	
12	674	9.08	20.4	
13	836	5.32	9.6	
14	861	9.16	16.1	
15	1,116	5.96	8.1	
16	10,380	75.00	10.9	Upper Marker

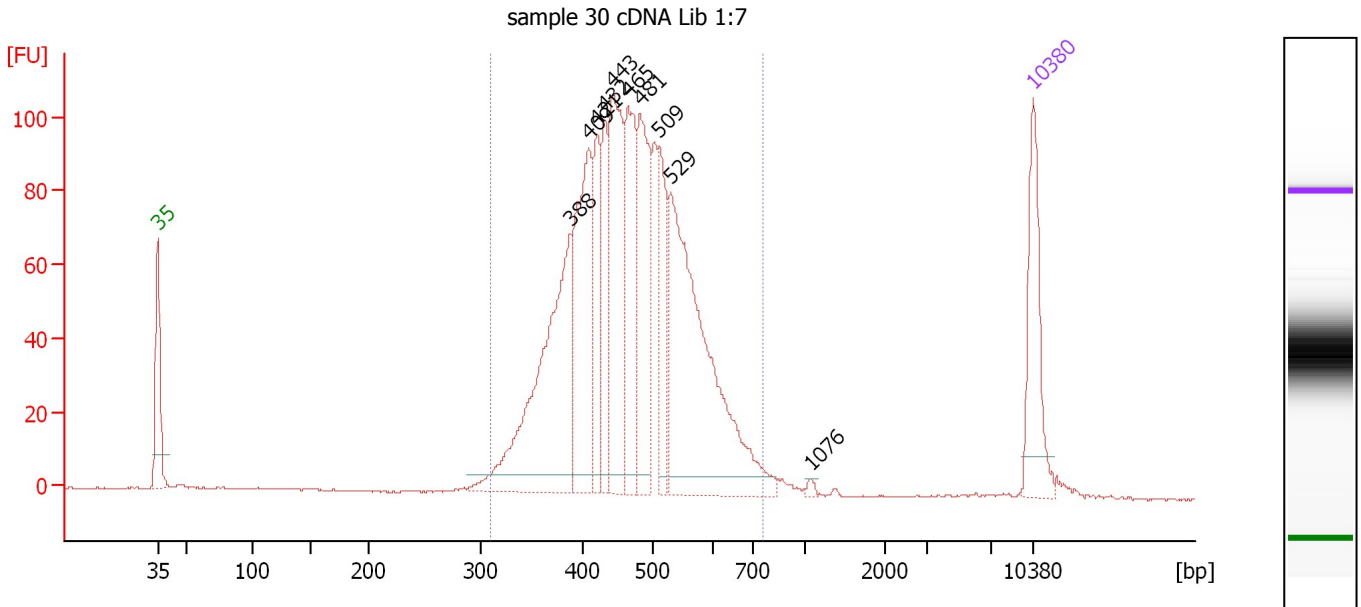
**Region table for sample 3 : sample 29 cDNA Lib 1:8**

From [bp]	To [bp]	Average Size [bp]	Molarity [pmol/l]	Conc. [pg/μl]	Corr. Area	% of Total	Size distribution in CV [%]	Color
303	660	405	4,264.2	1,120.54	1,135.0	100	12.6	Blue

Assay Class: High Sensitivity DNA Assay  
 Data Path: C:\...ents and Settings\Bioanalyzer\2013-04-19\2013-04-19\_003.xad

Created: 4/19/2013 2:40:00 PM  
 Modified: 4/19/2013 3:26:54 PM

**Electropherogram Summary Continued ...**



**Overall Results for sample 4 : sample 30 cDNA Lib 1:7**

Number of peaks found: 10      Corr. Area 1: 1,566.6  
 Noise: 0.2

**Peak table for sample 4 : sample 30 cDNA Lib 1:7**

Peak	Size [bp]	Conc. [pg/μl]	Molarity [pmol/l]	Observations
1	35	125.00	5,411.3	Lower Marker
2	388	289.67	1,130.3	
3	409	190.42	704.7	
4	421	81.40	292.8	
5	432	77.89	273.0	
6	443	181.16	619.2	
7	465	133.44	435.2	
8	481	143.73	452.7	
9	509	85.07	253.0	
10	529	355.23	1,017.0	
11	1,076	3.31	4.7	
12	10,380	75.00	10.9	Upper Marker

**Region table for sample 4 : sample 30 cDNA Lib 1:7**

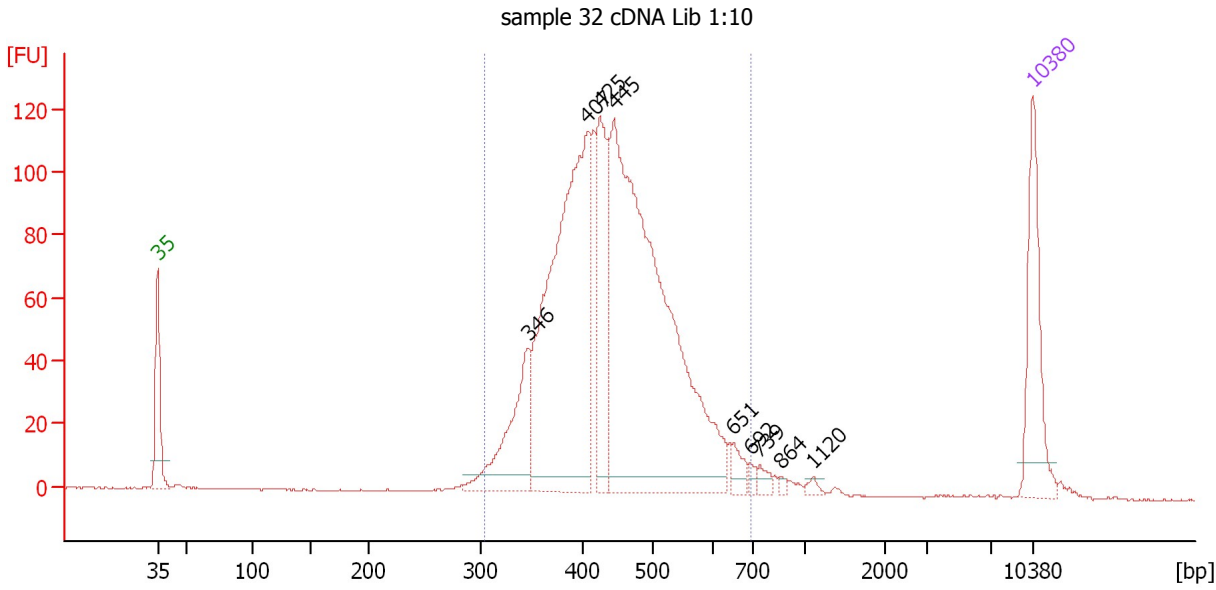
From [bp]	To [bp]	Average Size [bp]	Molarity [pmol/l]	Conc. [pg/μl]	Corr. Area	% of Total	Size distribution in CV [%]	Color
309	761	469	5,326.8	1,590.15	1,566.6	97	16.9	Blue



Assay Class: High Sensitivity DNA Assay  
 Data Path: C:\...ents and Settings\Bioanalyzer\2013-04-19\2013-04-19\_003.xad

Created: 4/19/2013 2:40:00 PM  
 Modified: 4/19/2013 3:26:54 PM

**Electropherogram Summary Continued ...**



**Overall Results for sample 5 : sample 32 cDNA Lib 1:10**

Number of peaks found: 9                      Corr. Area 1: 1,647.4  
 Noise: 0.2

**Peak table for sample 5 : sample 32 cDNA Lib 1:10**

Peak	Size [bp]	Conc. [pg/μl]	Molarity [pmol/l]	Observations
1	35	125.00	5,411.3	Lower Marker
2	346	114.54	501.3	
3	407	449.89	1,673.7	
4	425	117.16	417.8	
5	445	643.47	2,191.3	
6	651	16.06	37.4	
7	692	4.93	10.8	
8	739	8.41	17.2	
9	864	2.75	4.8	
10	1,120	4.16	5.6	
11	10,380	75.00	10.9	Upper Marker

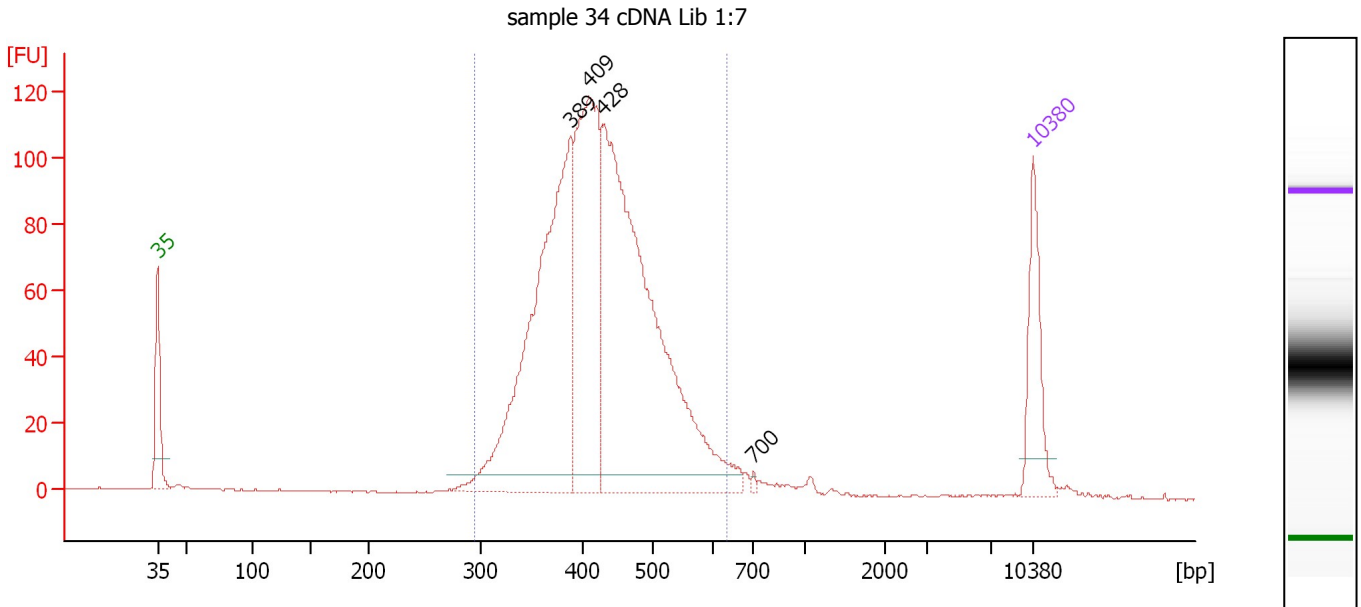
**Region table for sample 5 : sample 32 cDNA Lib 1:10**

From [bp]	To [bp]	Average Size [bp]	Molarity [pmol/l]	Conc. [pg/μl]	Corr. Area	% of Total	Size distribution in CV [%]	Color
304	694	445	4,877.3	1,383.97	1,647.4	96	16.6	Blue

Assay Class: High Sensitivity DNA Assay  
 Data Path: C:\...ents and Settings\Bioanalyzer\2013-04-19\2013-04-19\_003.xad

Created: 4/19/2013 2:40:00 PM  
 Modified: 4/19/2013 3:26:54 PM

**Electropherogram Summary Continued ...**



**Overall Results for sample 6 : sample 34 cDNA Lib 1:7**

Number of peaks found: 4                      Corr. Area 1: 1,533.9  
 Noise: 0.2

**Peak table for sample 6 : sample 34 cDNA Lib 1:7**

Peak	Size [bp]	Conc. [pg/μl]	Molarity [pmol/l]	Observations
1	35	125.00	5,411.3	Lower Marker
2	389	572.40	2,231.1	
3	409	371.49	1,375.7	
4	428	750.68	2,658.7	
5	700	3.49	7.6	
6	10,380	75.00	10.9	Upper Marker

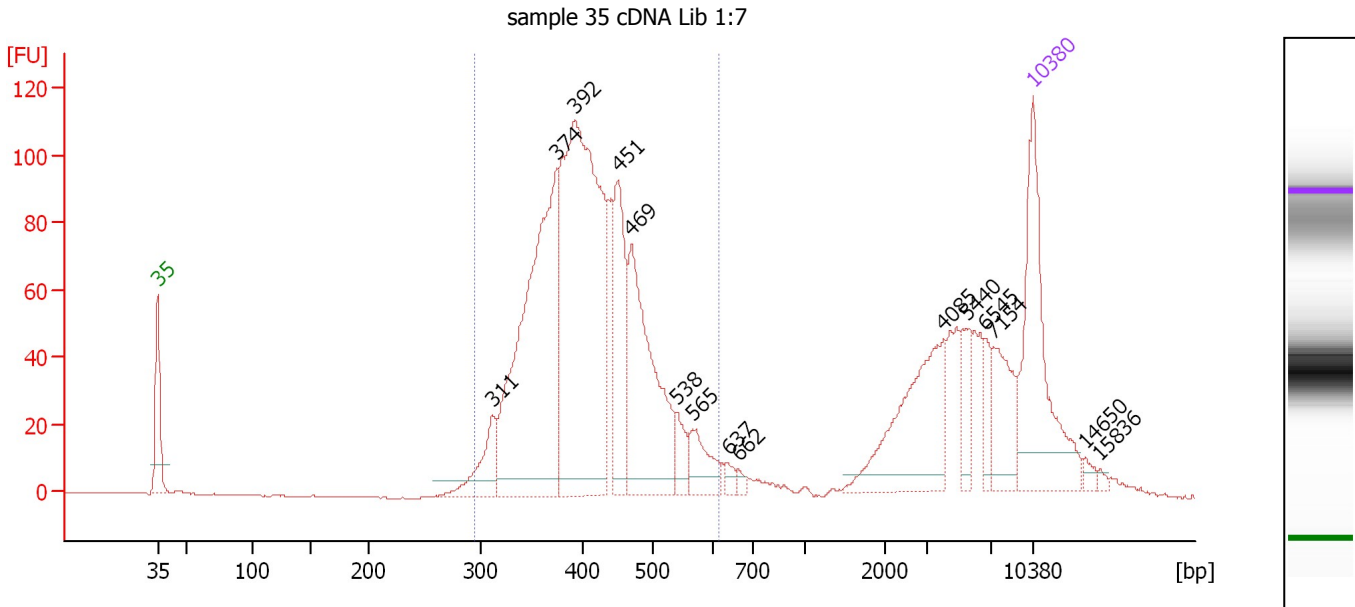
**Region table for sample 6 : sample 34 cDNA Lib 1:7**

From [bp]	To [bp]	Average Size [bp]	Molarity [pmol/l]	Conc. [pg/μl]	Corr. Area	% of Total	Size distribution in CV [%]	Color
294	636	427	6,195.1	1,699.78	1,533.9	95	15.2	Blue

Assay Class: High Sensitivity DNA Assay  
 Data Path: C:\...ents and Settings\Bioanalyzer\2013-04-19\2013-04-19\_003.xad

Created: 4/19/2013 2:40:00 PM  
 Modified: 4/19/2013 3:26:54 PM

**Electropherogram Summary Continued ...**



**Overall Results for sample 7 : sample 35 cDNA Lib 1:7**

Number of peaks found: 15                      Corr. Area 1: 1,418.5  
 Noise: 0.1

**Peak table for sample 7 : sample 35 cDNA Lib 1:7**

Peak	Size [bp]	Conc. [pg/μl]	Molarity [pmol/l]	Observations
1	35	125.00	5,411.3	Lower Marker
2	311	33.25	162.2	
3	374	232.00	938.7	
4	392	292.64	1,130.1	
5	451	72.12	242.3	
6	469	118.89	384.1	
7	538	13.86	39.0	
8	565	21.90	58.7	
9	637	4.35	10.3	
10	662	3.02	6.9	
11	4,085	72.35	26.8	
12	5,440	16.68	4.6	
13	6,545	10.48	2.4	
14	7,154	29.57	6.3	
15	10,380	75.00	10.9	Upper Marker
16	14,650	0.00	0.0	
17	15,836	0.00	0.0	

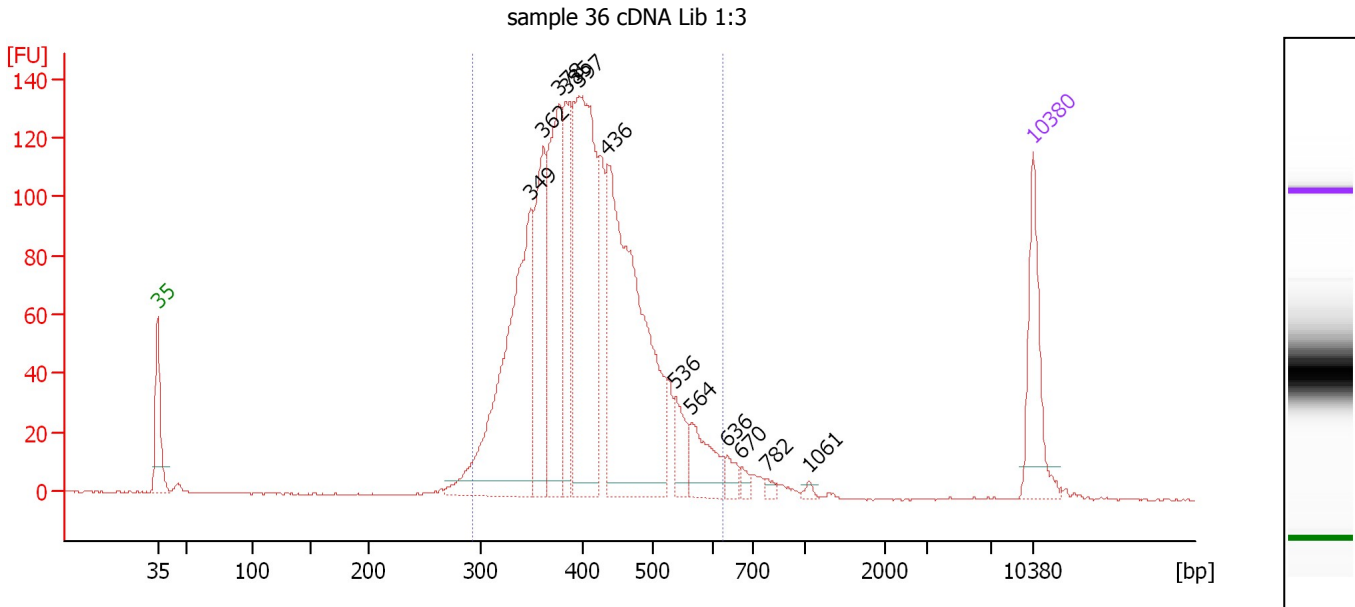
**Region table for sample 7 : sample 35 cDNA Lib 1:7**

From [bp]	To [bp]	Average Size [bp]	Molarity [pmol/l]	Conc. [pg/μl]	Corr. Area	% of Total	Size distribution in CV [%]	Color
294	616	415	2,962.4	790.11	1,418.5	75	15.1	Blue

Assay Class: High Sensitivity DNA Assay  
 Data Path: C:\...ents and Settings\Bioanalyzer\2013-04-19\2013-04-19\_003.xad

Created: 4/19/2013 2:40:00 PM  
 Modified: 4/19/2013 3:26:54 PM

**Electropherogram Summary Continued ...**



**Overall Results for sample 8 : sample 36 cDNA Lib 1:3**

Number of peaks found: 12                      Corr. Area 1: 1,884.0  
 Noise: 0.2

**Peak table for sample 8 : sample 36 cDNA Lib 1:3**

Peak	Size [bp]	Conc. [pg/μl]	Molarity [pmol/l]	Observations
1	35	125.00	5,411.3	Lower Marker
2	349	373.30	1,620.4	
3	362	160.73	673.0	
4	378	211.14	847.3	
5	385	110.02	433.5	
6	397	345.10	1,317.8	
7	436	444.96	1,547.2	
8	536	38.12	107.7	
9	564	56.96	153.0	
10	636	15.43	36.8	
11	670	7.85	17.8	
12	782	4.94	9.6	
13	1,061	4.27	6.1	
14	10,380	75.00	10.9	Upper Marker

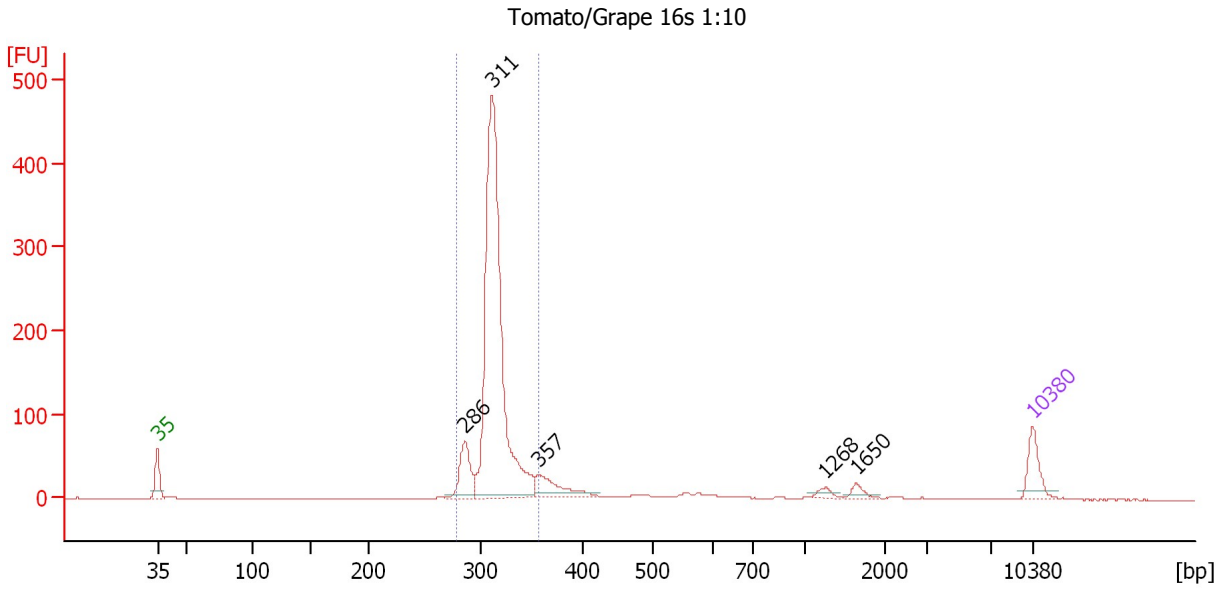
**Region table for sample 8 : sample 36 cDNA Lib 1:3**

From [bp]	To [bp]	Average Size [bp]	Molarity [pmol/l]	Conc. [pg/μl]	Corr. Area	% of Total	Size distribution in CV [%]	Color
292	624	412	7,114.1	1,878.58	1,884.0	96	15.9	Blue

Assay Class: High Sensitivity DNA Assay  
 Data Path: C:\...ents and Settings\Bioanalyzer\2013-04-19\2013-04-19\_003.xad

Created: 4/19/2013 2:40:00 PM  
 Modified: 4/19/2013 3:26:54 PM

**Electropherogram Summary Continued ...**



**Overall Results for sample 9 : Tomato/Grape 16s 1:10**

Number of peaks found: 5                      Corr. Area 1: 1,145.8  
 Noise: 0.2

**Peak table for sample 9 : Tomato/Grape 16s 1:10**

Peak	Size [bp]	Conc. [pg/μl]	Molarity [pmol/l]	Observations
1	35	125.00	5,411.3	Lower Marker
2	286	159.98	848.5	
3	311	1,495.58	7,285.0	
4	357	115.18	488.9	
5	1,268	16.89	20.2	
6	1,650	19.70	18.1	
7	10,380	75.00	10.9	Upper Marker

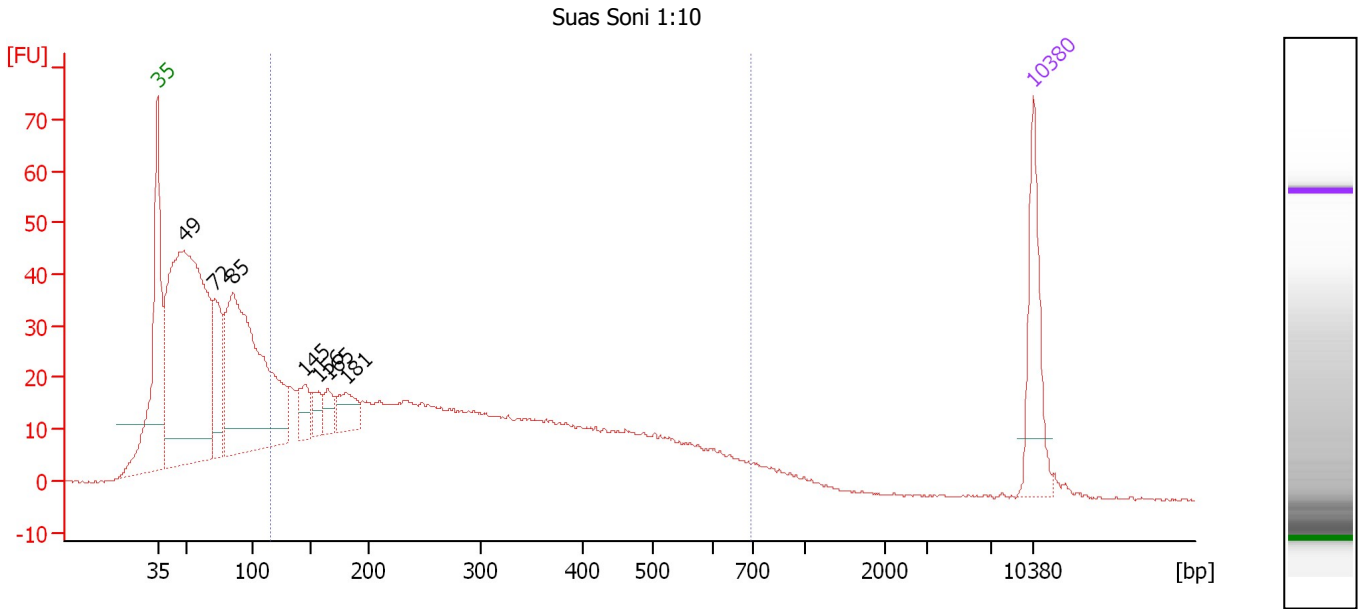
**Region table for sample 9 : Tomato/Grape 16s 1:10**

From [bp]	To [bp]	Average Size [bp]	Molarity [pmol/l]	Conc. [pg/μl]	Corr. Area	% of Total	Size distribution in CV [%]	Color
279	356	313	8,064.4	1,663.20	1,145.8	81	4.3	Blue

Assay Class: High Sensitivity DNA Assay  
 Data Path: C:\...ents and Settings\Bioanalyzer\2013-04-19\2013-04-19\_003.xad

Created: 4/19/2013 2:40:00 PM  
 Modified: 4/19/2013 3:26:54 PM

**Electropherogram Summary Continued ...**



**Overall Results for sample 10 : Suas Soni 1:10**

Number of peaks found: 7                      Corr. Area 1: 787.6  
 Noise: 0.2

**Peak table for sample 10 : Suas Soni 1:10**

Peak	Size [bp]	Conc. [pg/μl]	Molarity [pmol/l]	Observations
1	35	125.00	5,411.3	Lower Marker
2	49	719.55	22,160.2	
3	72	112.80	2,390.0	
4	85	481.97	8,610.6	
5	145	36.93	386.2	
6	156	25.74	249.3	
7	165	27.64	254.0	
8	181	43.12	361.5	
9	10,380	75.00	10.9	Upper Marker

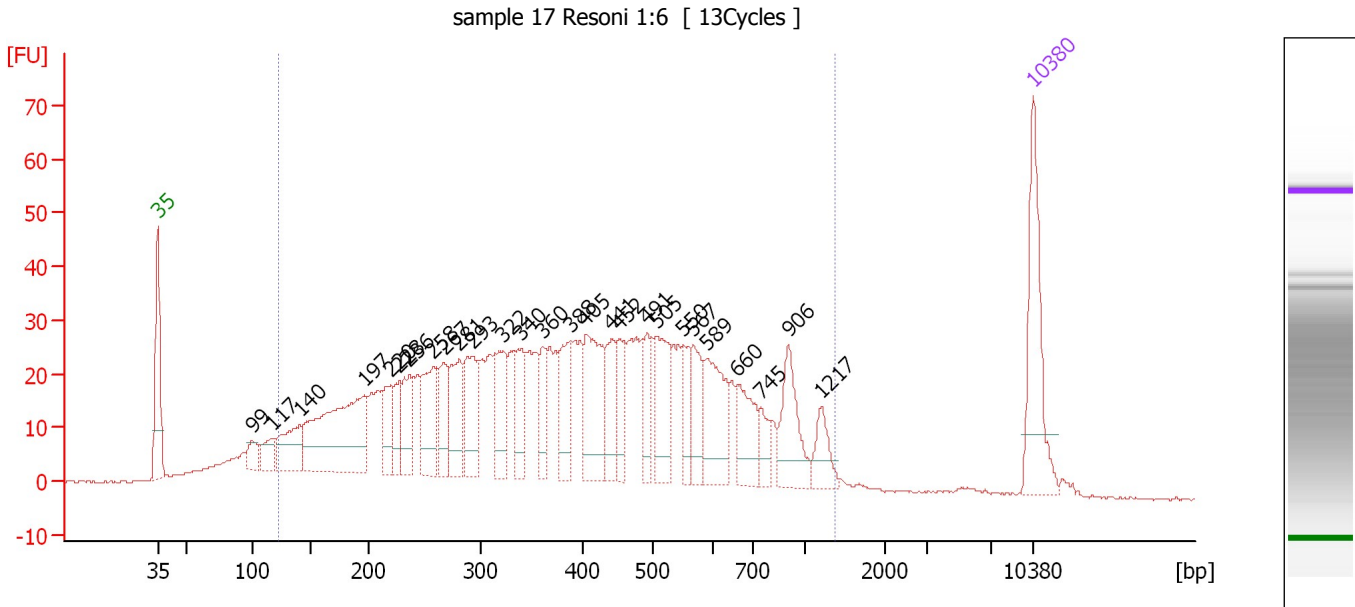
**Region table for sample 10 : Suas Soni 1:10**

From [bp]	To [bp]	Average Size [bp]	Molarity [pmol/l]	Conc. [pg/μl]	Corr. Area	% of Total	Size distribution in CV [%]	Color
115	695	310	9,468.6	1,395.45	787.6	53	46.0	Blue

Assay Class: High Sensitivity DNA Assay  
 Data Path: C:\...ents and Settings\Bioanalyzer\2013-04-19\2013-04-19\_003.xad

Created: 4/19/2013 2:40:00 PM  
 Modified: 4/19/2013 3:26:54 PM

**Electropherogram Summary Continued ...**



**Overall Results for sample 11 : sample 17 Resoni 1:6**

Number of peaks found: 27                      Corr. Area 1: 1,271.0  
 Noise: 0.2

**Peak table for sample 11 : sample 17 Resoni 1:6**

Peak	Size [bp]	Conc. [pg/μl]	Molarity [pmol/l]	Observations
1	35	125.00	5,411.3	Lower Marker
2	99	19.16	293.1	
3	117	22.91	297.3	
4	140	57.91	624.6	
5	197	191.88	1,477.6	
6	220	37.96	261.0	
7	228	31.45	209.2	
8	236	50.38	322.9	
9	258	64.26	377.5	
10	267	37.55	213.1	
11	281	63.26	341.1	
12	293	61.80	319.2	
13	322	55.72	262.3	
14	340	46.62	207.8	
15	360	32.64	137.3	
16	388	53.81	209.9	
17	405	86.01	321.9	
18	441	40.75	140.2	
19	452	36.05	121.0	
20	491	33.78	104.3	
21	505	62.76	188.3	
22	550	29.13	80.3	
23	567	39.09	104.5	
24	589	69.59	178.9	
25	660	45.81	105.2	
26	745	18.79	38.2	

Assay Class: High Sensitivity DNA Assay  
 Data Path: C:\...ents and Settings\Bioanalyzer\2013-04-19\2013-04-19\_003.xad

Created: 4/19/2013 2:40:00 PM  
 Modified: 4/19/2013 3:26:54 PM

### Electropherogram Summary Continued ...

#### ... Peak table for sample 11 : sample 17 Resoni 1:6

Peak	Size [bp]	Conc. [pg/ $\mu$ l]	Molarity [pmol/l]	Observations
27	906	53.38	89.2	
28	1,217	24.47	30.5	
29	10,380	75.00	10.9	Upper Marker

#### Region table for sample 11 : sample 17 Resoni 1:6

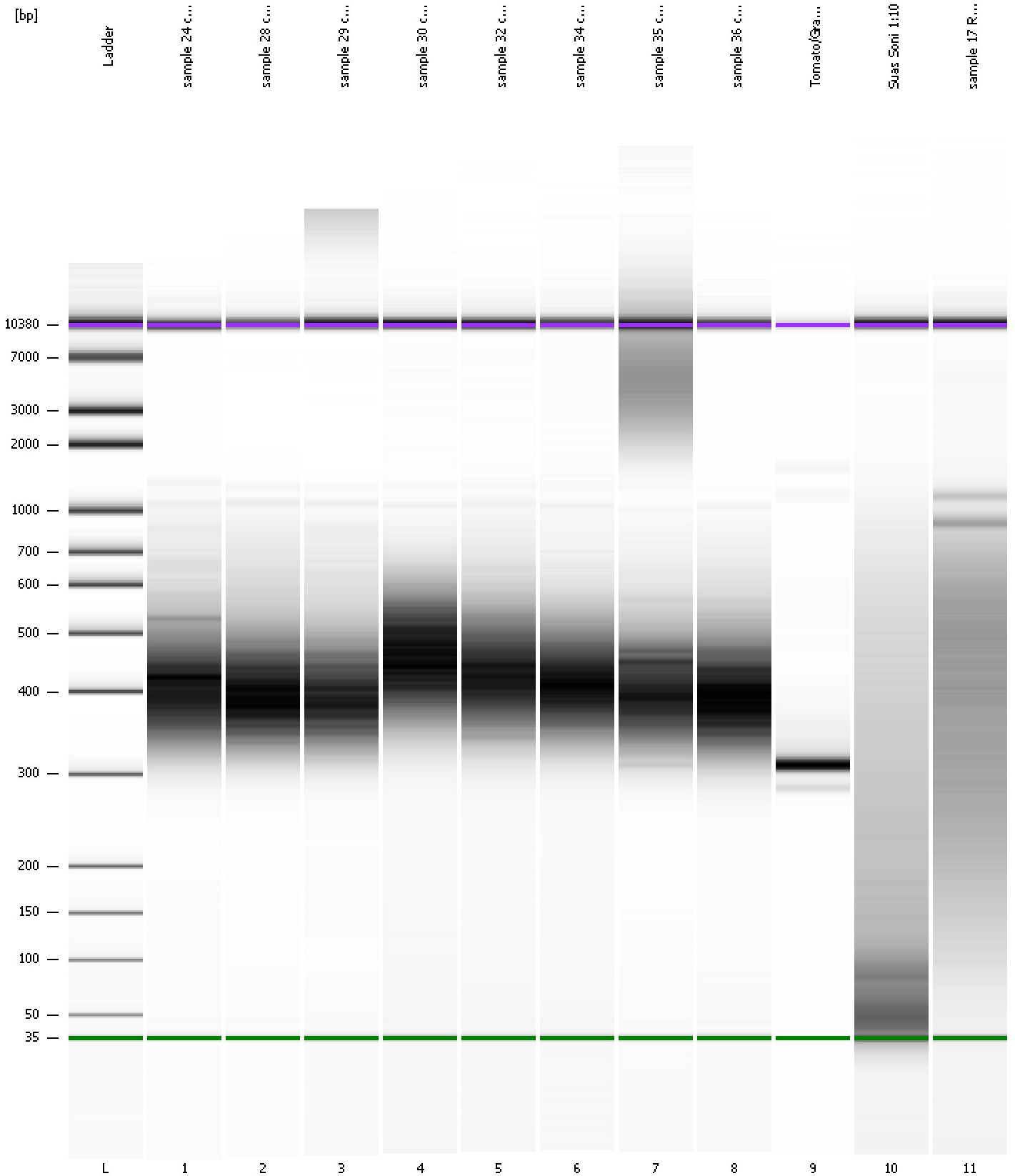
From [bp]	To [bp]	Average Size [bp]	Molarity [pmol/l]	Conc. [pg/ $\mu$ l]	Corr. Area	% of Total	Size distribution in CV [%]	Color
122	1,375	433	10,303.2	2,055.60	1,271.0	93	51.0	<span style="color: blue;">■</span>



Assay Class: High Sensitivity DNA Assay  
Data Path: C:\...ents and Settings\Bioanalyzer\2013-04-19\2013-04-19\_003.xad

Created: 4/19/2013 2:40:00 PM  
Modified: 4/19/2013 3:26:54 PM

**Gel Image**



Assay Class: High Sensitivity DNA Assay  
 Data Path: C:\...ents and Settings\Bioanalyzer\2013-04-19\2013-04-19\_003.xad

Created: 4/19/2013 2:40:00 PM  
 Modified: 4/19/2013 3:26:54 PM

**Run Logbook**

Description	Number	Source	Category	Sub Category	Time	Time Zone	User	Host
Run ended on port 1 (Number of wells acquired: 12)		Instrument	Run		4/19/2013 3:21:19 PM	(GMT --07:00) Pacific Standard Time	UC Davis	D8XSMGH1
Run started on port 1 (File: C:\Documents and Settings\Bioanalyzer\2013-04-19\2013-04-19_003.xad)		Instrument	Run		4/19/2013 2:40:05 PM	(GMT --07:00) Pacific Standard Time	UC Davis	D8XSMGH1
Product Number : G2938B		Instrument	Run		4/19/2013 2:40:05 PM	(GMT --07:00) Pacific Standard Time	UC Davis	D8XSMGH1
Name :		Instrument	Run		4/19/2013 2:40:05 PM	(GMT --07:00) Pacific Standard Time	UC Davis	D8XSMGH1
Vendor : Agilent Technologies		Instrument	Run		4/19/2013 2:40:05 PM	(GMT --07:00) Pacific Standard Time	UC Davis	D8XSMGH1
Serial# : DE13701086		Instrument	Run		4/19/2013 2:40:05 PM	(GMT --07:00) Pacific Standard Time	UC Davis	D8XSMGH1
Firmware : C.01.069		Instrument	Run		4/19/2013 2:40:05 PM	(GMT --07:00) Pacific Standard Time	UC Davis	D8XSMGH1
Cartridge : Electrode		Instrument	Run		4/19/2013 2:40:05 PM	(GMT --07:00) Pacific Standard Time	UC Davis	D8XSMGH1