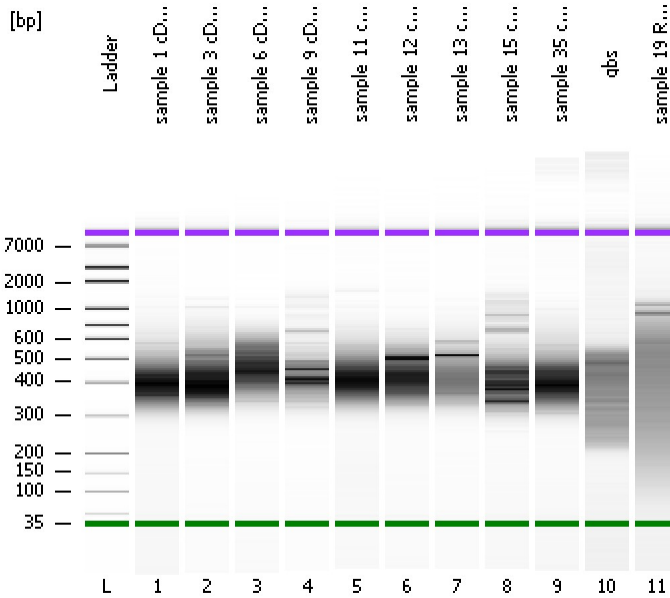


Assay Class: High Sensitivity DNA Assay
Data Path: C:\...ents and Settings\Bioanalyzer\2013-04-23\2013-04-23_001.xad

Created: 4/23/2013 9:06:54 AM
Modified: 4/23/2013 9:50:09 AM

Electrophoresis File Run Summary



Instrument Information:

Instrument Name: DE13701086 Firmware: C.01.069
Serial#: DE13701086 Type: G2938B

Assay Information:

Assay Origin Path: C:\Program Files\Agilent\2100 bioanalyzer\2100 expert\assays\dsDNA\High Sensitivity DNA.xsy
Assay Class: High Sensitivity DNA Assay
Version: 1.03
Assay Comments: Copyright © 2003-2010 Agilent Technologies

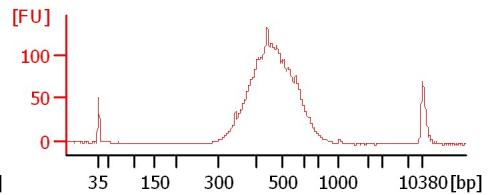
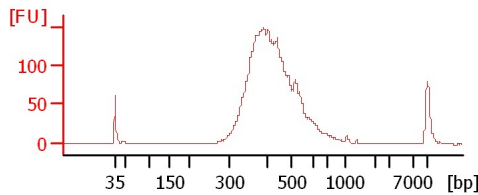
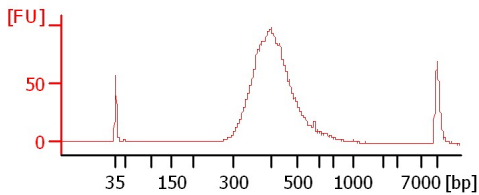
Chip Information:

Chip Lot #:
Reagent Kit Lot #:
Chip Comments:

sample 1 cDNA Lib 1:10

sample 3 cDNA Lib 1:4

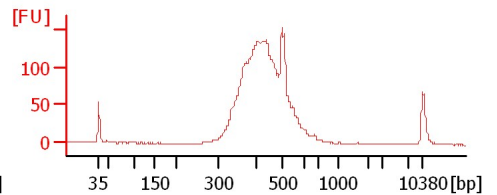
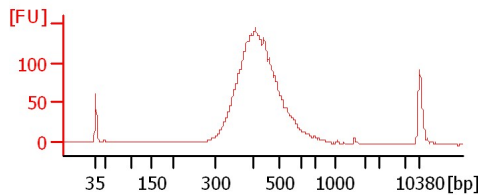
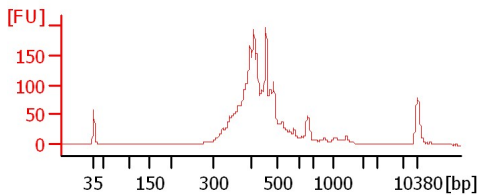
sample 6 cDNA Lib 1:9



sample 9 cDNA Lib 1:8

sample 11 cDNA Lib 1:5

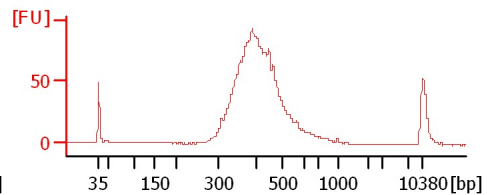
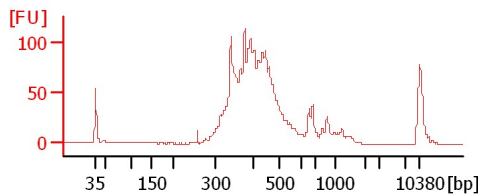
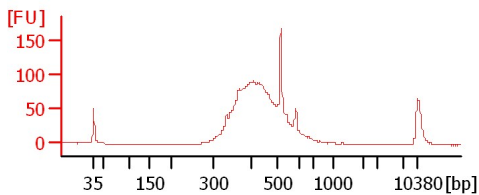
sample 12 cDNA Lib 1:4



sample 13 cDNA Lib 1:5

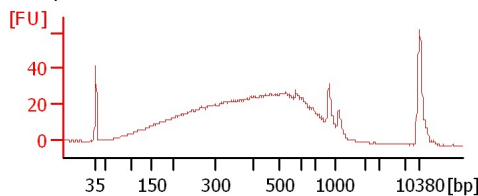
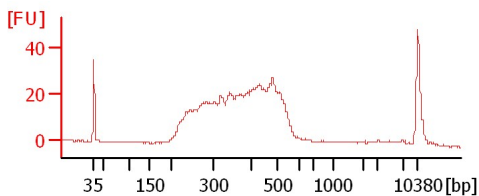
sample 15 cDNA Lib 1:6

sample 35 cDNA Lib 1:8



qbs

sample 19 Resoni 1:6



Assay Class: High Sensitivity DNA Assay
Data Path: C:\...ents and Settings\Bioanalyzer\2013-04-23\2013-04-23_001.xad

Created: 4/23/2013 9:06:54 AM
Modified: 4/23/2013 9:50:09 AM

Electrophoresis File Run Summary (Chip Summary)

Sample Name	Sample Comment	Rest. Digest	Status	Observation	Result Label	Result Color
sample 1 cDNA Lib 1:10		<input type="checkbox"/>	✓			
sample 3 cDNA Lib 1:4		<input type="checkbox"/>	✓			
sample 6 cDNA Lib 1:9		<input type="checkbox"/>	✓			
sample 9 cDNA Lib 1:8		<input type="checkbox"/>	✓			
sample 11 cDNA Lib 1:5		<input type="checkbox"/>	✓			
sample 12 cDNA Lib 1:4		<input type="checkbox"/>	✓			
sample 13 cDNA Lib 1:5		<input type="checkbox"/>	✓			
sample 15 cDNA Lib 1:6		<input type="checkbox"/>	✓			
sample 35 cDNA Lib 1:8		<input type="checkbox"/>	✓			
gbs		<input type="checkbox"/>	✓			
sample 19 Resoni 1:6	16Cycles	<input type="checkbox"/>	✓			
Ladder		<input type="checkbox"/>	✓			

Chip Lot #

Reagent Kit Lot #

Chip Comments :

Assay Class: High Sensitivity DNA Assay
Data Path: C:\...ents and Settings\Bioanalyzer\2013-04-23\2013-04-23_001.xad

Created: 4/23/2013 9:06:54 AM
Modified: 4/23/2013 9:50:09 AM

Electrophoresis Assay Details

General Analysis Settings

Number of Available Sample and Ladder Wells (Max.) : 12
Minimum Visible Range [s] : 32
Maximum Visible Range [s] : 138
Start Analysis Time Range [s] : 33
End Analysis Time Range [s] : 137.5
Ladder Concentration [pg/μl] : 1950
Uses Standard Area for Ladder Fragments
Lower Marker Concentration [pg/μl] : 125
Upper Marker Concentration [pg/μl] : 75
Used Upper Marker for Quantitation
Standard Curve Fit is Point to Point
Show Data Aligned to Lower and Upper Marker

Integrator Settings

Integration Start Time [s] : 33.05
Integration End Time [s] : 137
Slope Threshold : 0.8
Height Threshold [FU] : 5
Area Threshold : 0.1
Width Threshold [s] : 0.6
Baseline Plateau [s] : 0.5

Filter Settings

Filter Width [s] : 0.5
Polynomial Order : 4

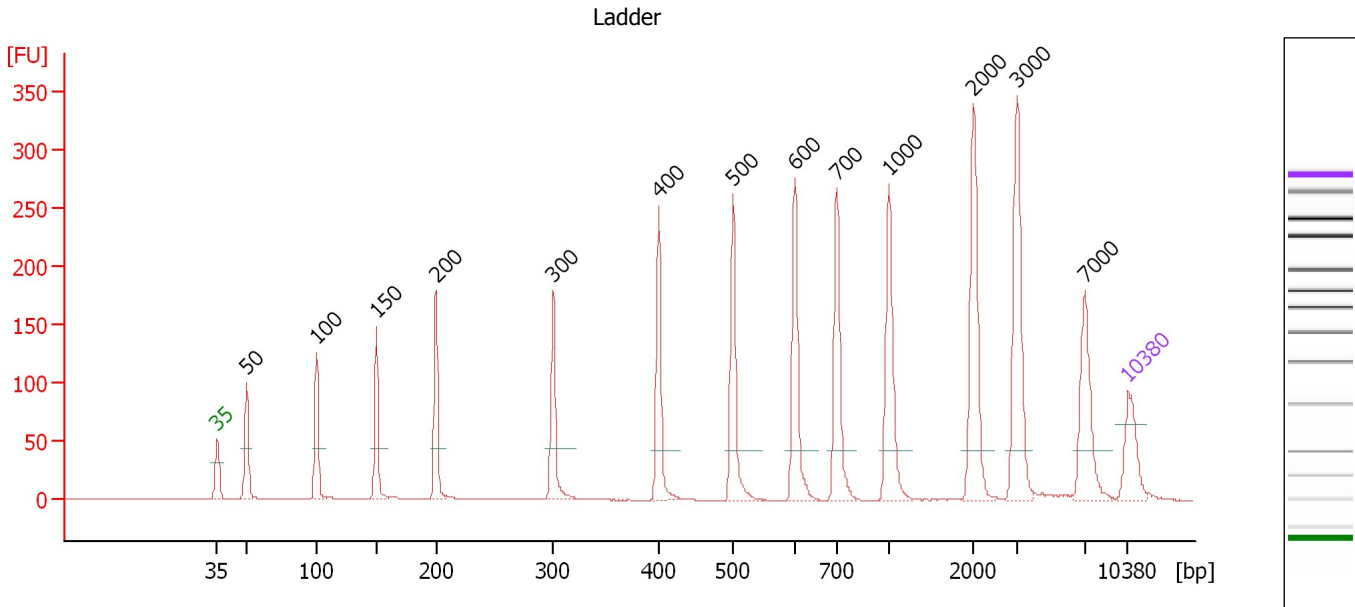
Ladder

Ladder Peak	Size	Area
1	35	160
2	50	210
3	100	208
4	150	221
5	200	242
6	300	270
7	400	305
8	500	306
9	600	336
10	700	321
11	1000	366
12	2000	413
13	3000	411
14	7000	400
15	10380	214

Assay Class: High Sensitivity DNA Assay
 Data Path: C:\...ents and Settings\Bioanalyzer\2013-04-23\2013-04-23_001.xad

Created: 4/23/2013 9:06:54 AM
 Modified: 4/23/2013 9:50:09 AM

Electropherogram Summary



Overall Results for Ladder

Noise: 0.1

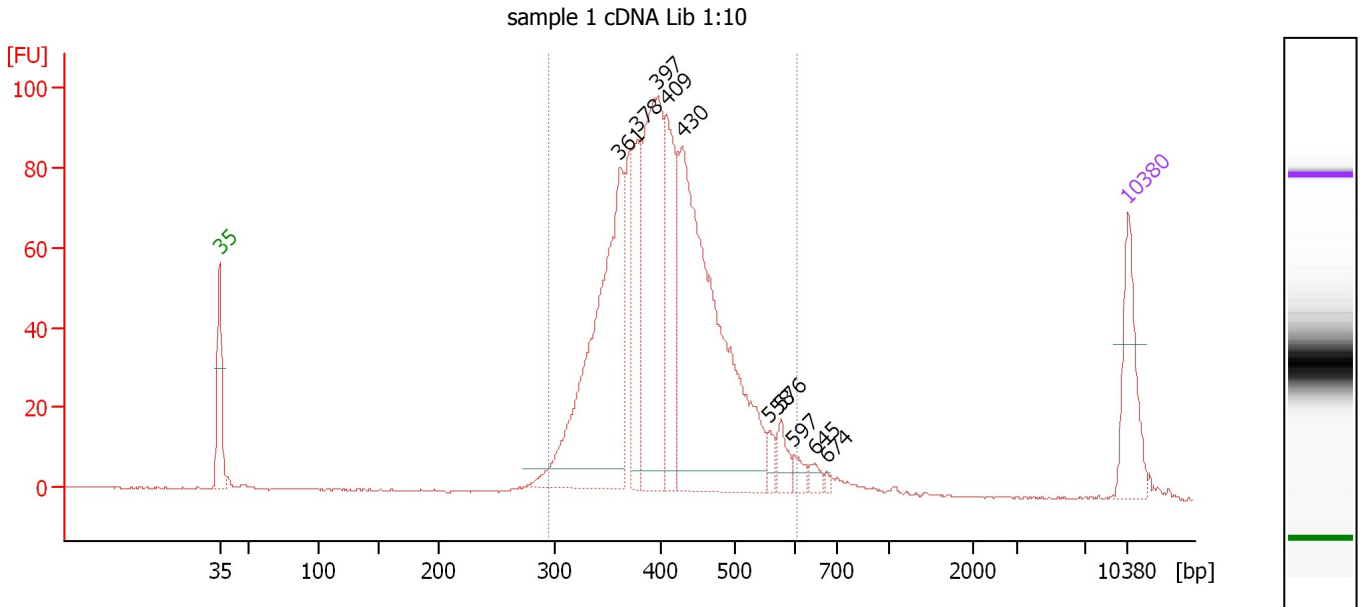
Peak table for Ladder

Peak	Size [bp]	Conc. [pg/μl]	Molarity [pmol/l]	Observations
1	35	125.00	5,411.3	Lower Marker
2	50	150.00	4,545.5	Ladder Peak
3	100	150.00	2,272.7	Ladder Peak
4	150	150.00	1,515.2	Ladder Peak
5	200	150.00	1,136.4	Ladder Peak
6	300	150.00	757.6	Ladder Peak
7	400	150.00	568.2	Ladder Peak
8	500	150.00	454.5	Ladder Peak
9	600	150.00	378.8	Ladder Peak
10	700	150.00	324.7	Ladder Peak
11	1,000	150.00	227.3	Ladder Peak
12	2,000	150.00	113.6	Ladder Peak
13	3,000	150.00	75.8	Ladder Peak
14	7,000	150.00	32.5	Ladder Peak
15	10,380	75.00	10.9	Upper Marker

Assay Class: High Sensitivity DNA Assay
 Data Path: C:\...ents and Settings\Bioanalyzer\2013-04-23\2013-04-23_001.xad

Created: 4/23/2013 9:06:54 AM
 Modified: 4/23/2013 9:50:09 AM

Electropherogram Summary Continued ...



Overall Results for sample 1 : sample 1 cDNA Lib 1:10

Number of peaks found: 10 Corr. Area 1: 1,297.6
 Noise: 0.1

Peak table for sample 1 : sample 1 cDNA Lib 1:10

Peak	Size [bp]	Conc. [pg/μl]	Molarity [pmol/l]	Observations
1	35	125.00	5,411.3	Lower Marker
2	361	463.31	1,941.9	
3	378	132.05	529.0	
4	397	328.45	1,252.1	
5	409	164.90	611.5	
6	430	593.88	2,094.9	
7	558	16.87	45.8	
8	576	26.13	68.7	
9	597	14.10	35.8	
10	645	11.94	28.0	
11	674	3.97	8.9	
12	10,380	75.00	10.9	Upper Marker

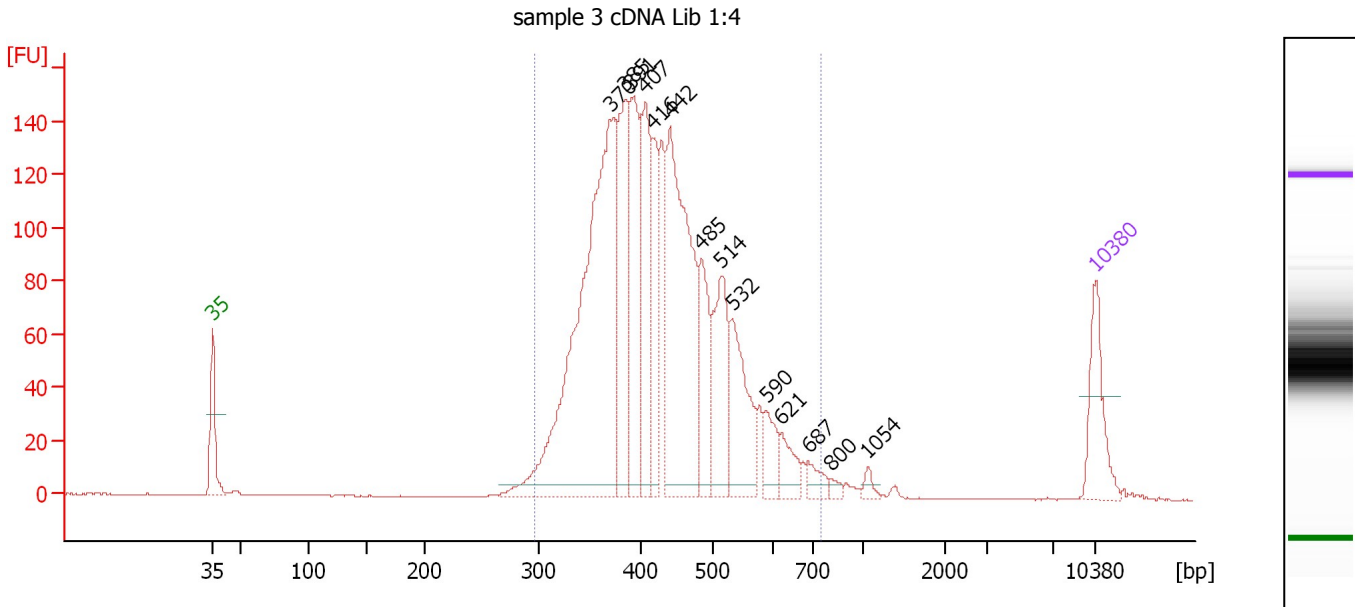
Region table for sample 1 : sample 1 cDNA Lib 1:10

From [bp]	To [bp]	Average Size [bp]	Molarity [pmol/l]	Conc. [pg/μl]	Corr. Area	% of Total	Size distribution in CV [%]	Color
296	602	412	7,020.7	1,862.70	1,297.6	95	14.9	Blue

Assay Class: High Sensitivity DNA Assay
 Data Path: C:\...ents and Settings\Bioanalyzer\2013-04-23\2013-04-23_001.xad

Created: 4/23/2013 9:06:54 AM
 Modified: 4/23/2013 9:50:09 AM

Electropherogram Summary Continued ...



Overall Results for sample 2 : sample 3 cDNA Lib 1:4

Number of peaks found: 14 Corr. Area 1: 2,305.2
 Noise: 0.2

Peak table for sample 2 : sample 3 cDNA Lib 1:4

Peak	Size [bp]	Conc. [pg/μl]	Molarity [pmol/l]	Observations
1	35	125.00	5,411.3	Lower Marker
2	370	809.26	3,310.2	
3	385	223.61	880.0	
4	391	212.65	823.5	
5	407	190.90	711.0	
6	416	115.60	421.3	
7	442	450.99	1,547.0	
8	485	122.89	384.1	
9	514	154.14	454.6	
10	532	149.84	426.4	
11	590	45.87	117.8	
12	621	39.89	97.4	
13	687	24.10	53.1	
14	800	8.49	16.1	
15	1,054	9.37	13.5	
16	10,380	75.00	10.9	Upper Marker

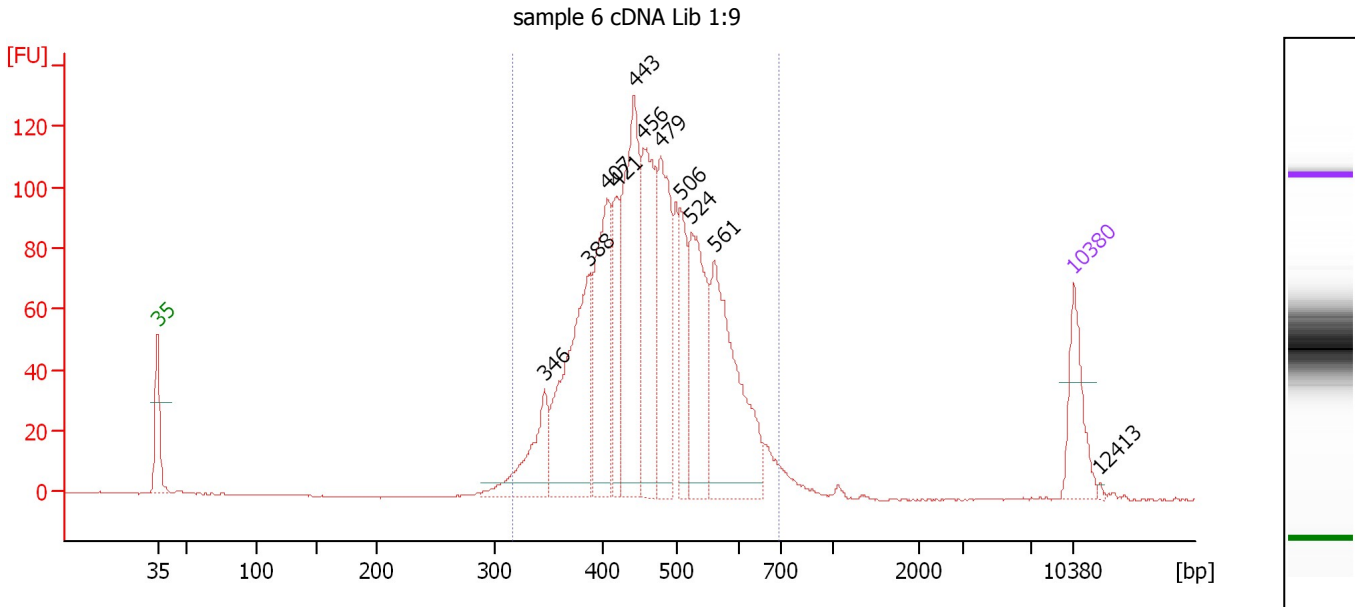
Region table for sample 2 : sample 3 cDNA Lib 1:4

From [bp]	To [bp]	Average Size [bp]	Molarity [pmol/l]	Conc. [pg/μl]	Corr. Area	% of Total	Size distribution in CV [%]	Color
297	744	432	9,851.5	2,697.44	2,305.2	97	18.2	Blue

Assay Class: High Sensitivity DNA Assay
 Data Path: C:\...ents and Settings\Bioanalyzer\2013-04-23\2013-04-23_001.xad

Created: 4/23/2013 9:06:54 AM
 Modified: 4/23/2013 9:50:09 AM

Electropherogram Summary Continued ...



Overall Results for sample 3 : sample 6 cDNA Lib 1:9

Number of peaks found: 11 Corr. Area 1: 1,691.9
 Noise: 0.2

Peak table for sample 3 : sample 6 cDNA Lib 1:9

Peak	Size [bp]	Conc. [pg/μl]	Molarity [pmol/l]	Observations
1	35	125.00	5,411.3	Lower Marker
2	346	129.90	568.8	
3	388	296.67	1,159.3	
4	407	242.87	904.4	
5	421	117.75	423.4	
6	443	316.27	1,080.6	
7	456	244.19	812.0	
8	479	233.69	738.8	
9	506	107.58	322.0	
10	524	220.93	638.3	
11	561	299.32	808.5	
12	10,380	75.00	10.9	Upper Marker
13	12,413	0.00	0.0	

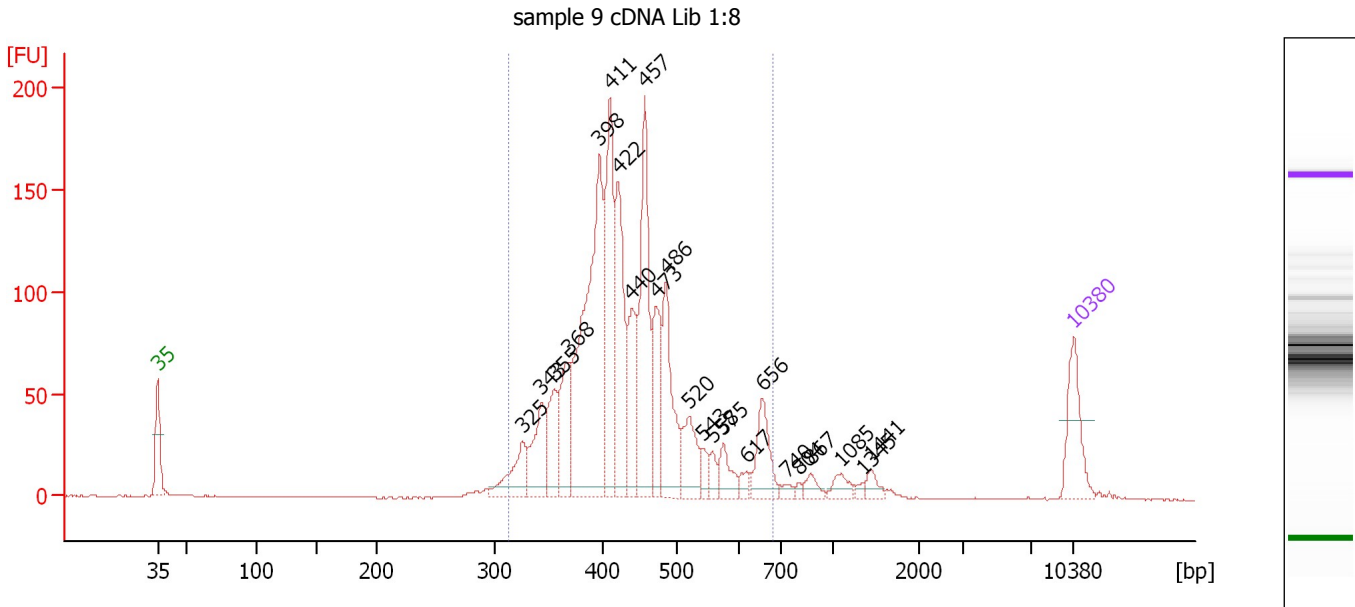
Region table for sample 3 : sample 6 cDNA Lib 1:9

From [bp]	To [bp]	Average Size [bp]	Molarity [pmol/l]	Conc. [pg/μl]	Corr. Area	% of Total	Size distribution in CV [%]	Color
317	694	469	7,741.3	2,313.99	1,691.9	97	16.4	Blue

Assay Class: High Sensitivity DNA Assay
 Data Path: C:\...ents and Settings\Bioanalyzer\2013-04-23\2013-04-23_001.xad

Created: 4/23/2013 9:06:54 AM
 Modified: 4/23/2013 9:50:09 AM

Electropherogram Summary Continued ...



Overall Results for sample 4 : sample 9 cDNA Lib 1:8

Number of peaks found: 23 Corr. Area 1: 1,680.6
 Noise: 0.2

Peak table for sample 4 : sample 9 cDNA Lib 1:8

Peak	Size [bp]	Conc. [pg/μl]	Molarity [pmol/l]	Observations
1	35	125.00	5,411.3	Lower Marker
2	325	79.98	372.8	
3	343	99.91	441.1	
4	355	90.06	384.1	
5	368	114.54	471.0	
6	398	486.06	1,850.1	
7	411	248.56	915.7	
8	422	193.64	694.9	
9	440	122.77	422.6	
10	457	245.68	813.9	
11	473	107.51	344.4	
12	486	156.37	487.2	
13	520	81.55	237.6	
14	543	20.33	56.8	
15	558	18.91	51.4	
16	575	39.39	103.7	
17	617	13.67	33.6	
18	656	77.30	178.6	
19	740	10.05	20.6	
20	804	5.80	10.9	
21	867	17.40	30.4	
22	1,085	20.50	28.6	
23	1,345	6.43	7.2	
24	1,441	15.75	16.6	
25	10,380	75.00	10.9	Upper Marker

Assay Class: High Sensitivity DNA Assay
Data Path: C:\...ents and Settings\Bioanalyzer\2013-04-23\2013-04-23_001.xad

Created: 4/23/2013 9:06:54 AM
Modified: 4/23/2013 9:50:09 AM

Electropherogram Summary Continued ...

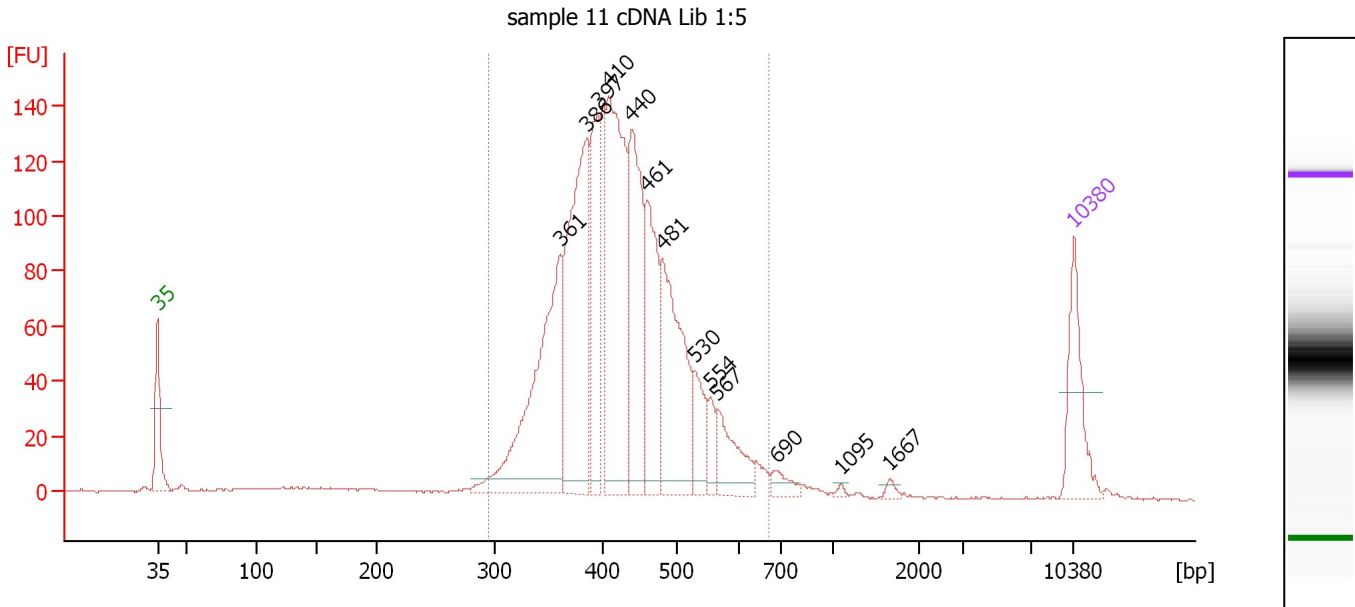
... Region table for sample 4 : sample 9 cDNA Lib 1:8

From [bp]	To [bp]	Average Size [bp]	Molarity [pmol/l]	Conc. [pg/μl]	Corr. Area	% of Total	Size distribution in CV [%]	Color
312	683	438	7,844.0	2,197.16	1,680.6	93	16.9	■

Assay Class: High Sensitivity DNA Assay
 Data Path: C:\...ents and Settings\Bioanalyzer\2013-04-23\2013-04-23_001.xad

Created: 4/23/2013 9:06:54 AM
 Modified: 4/23/2013 9:50:09 AM

Electropherogram Summary Continued ...



Overall Results for sample 5 : sample 11 cDNA Lib 1:5

Number of peaks found: 13 Corr. Area 1: 1,881.2
 Noise: 0.3

Peak table for sample 5 : sample 11 cDNA Lib 1:5

Peak	Size [bp]	Conc. [pg/μl]	Molarity [pmol/l]	Observations
1	35	125.00	5,411.3	Lower Marker
2	361	340.70	1,431.0	
3	386	341.10	1,339.1	
4	397	156.13	596.5	
5	410	346.21	1,280.9	
6	440	230.27	793.2	
7	461	162.43	533.4	
8	481	224.08	706.5	
9	530	55.66	159.0	
10	554	31.07	85.0	
11	567	68.89	184.2	
12	690	18.38	40.4	
13	1,095	3.29	4.6	
14	1,667	5.05	4.6	
15	10,380	75.00	10.9	Upper Marker

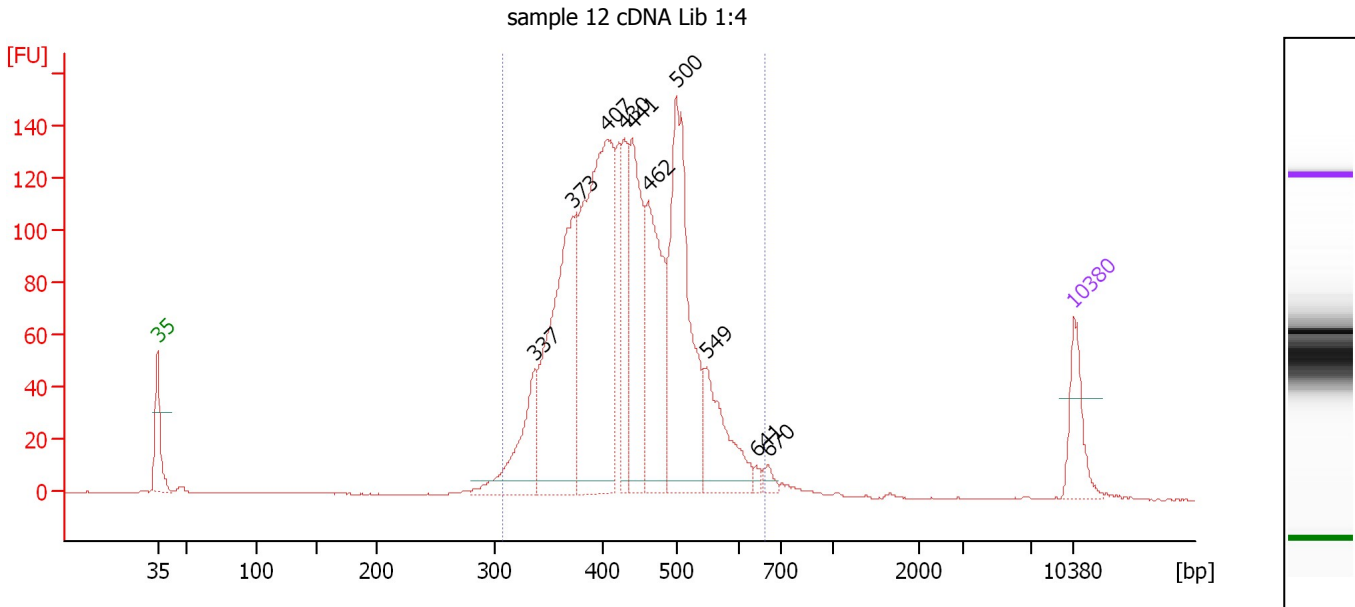
Region table for sample 5 : sample 11 cDNA Lib 1:5

From [bp]	To [bp]	Average Size [bp]	Molarity [pmol/l]	Conc. [pg/μl]	Corr. Area	% of Total	Size distribution in CV [%]	Color
294	671	429	7,613.4	2,093.51	1,881.2	94	16.0	Blue

Assay Class: High Sensitivity DNA Assay
 Data Path: C:\...ents and Settings\Bioanalyzer\2013-04-23\2013-04-23_001.xad

Created: 4/23/2013 9:06:54 AM
 Modified: 4/23/2013 9:50:09 AM

Electropherogram Summary Continued ...



Overall Results for sample 6 : sample 12 cDNA Lib 1:4

Number of peaks found: 10 Corr. Area 1: 1,991.9
 Noise: 0.2

Peak table for sample 6 : sample 12 cDNA Lib 1:4

Peak	Size [bp]	Conc. [pg/μl]	Molarity [pmol/l]	Observations
1	35	125.00	5,411.3	Lower Marker
2	337	177.93	800.6	
3	373	504.73	2,052.9	
4	407	718.61	2,675.4	
5	430	159.33	560.9	
6	441	301.04	1,034.4	
7	462	319.56	1,048.0	
8	500	491.19	1,488.4	
9	549	170.89	471.3	
10	641	9.37	22.2	
11	670	15.54	35.2	
12	10,380	75.00	10.9	Upper Marker

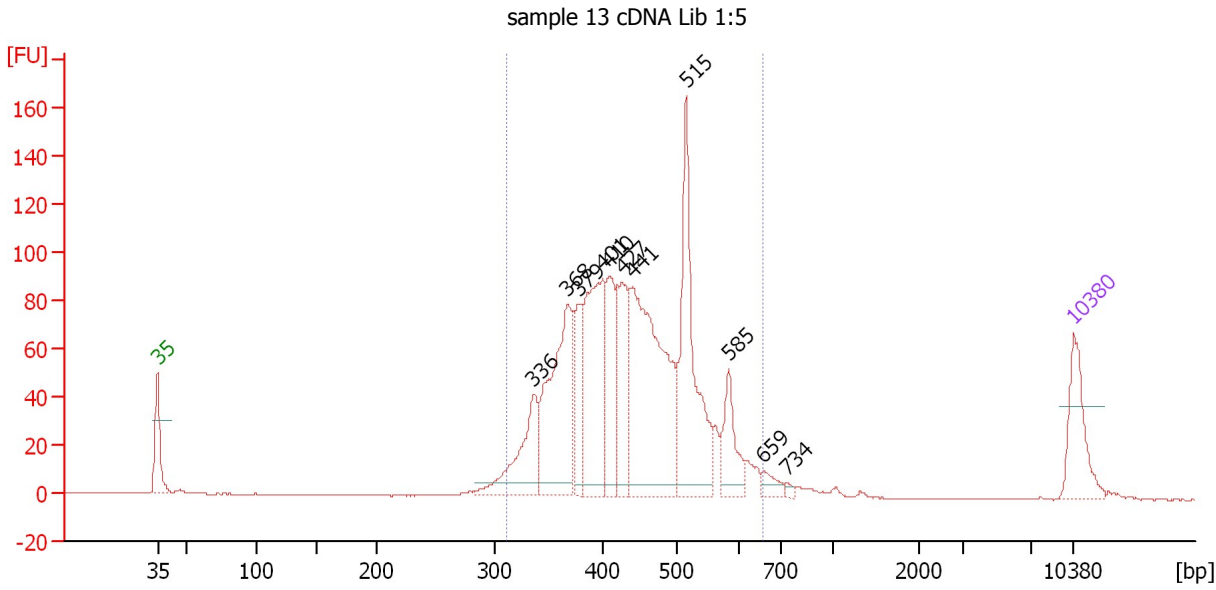
Region table for sample 6 : sample 12 cDNA Lib 1:4

From [bp]	To [bp]	Average Size [bp]	Molarity [pmol/l]	Conc. [pg/μl]	Corr. Area	% of Total	Size distribution in CV [%]	Color
307	661	438	10,758.1	3,015.51	1,991.9	97	15.6	Blue

Assay Class: High Sensitivity DNA Assay
 Data Path: C:\...ents and Settings\Bioanalyzer\2013-04-23\2013-04-23_001.xad

Created: 4/23/2013 9:06:54 AM
 Modified: 4/23/2013 9:50:09 AM

Electropherogram Summary Continued ...



Overall Results for sample 7 : sample 13 cDNA Lib 1:5

Number of peaks found: 11 Corr. Area 1: 1,455.7
 Noise: 0.2

Peak table for sample 7 : sample 13 cDNA Lib 1:5

Peak	Size [bp]	Conc. [pg/μl]	Molarity [pmol/l]	Observations
1	35	125.00	5,411.3	Lower Marker
2	336	143.03	645.8	
3	368	287.24	1,183.9	
4	379	91.71	366.6	
5	401	259.33	979.4	
6	410	119.89	442.9	
7	427	142.72	506.1	
8	441	422.77	1,452.1	
9	515	277.58	816.0	
10	585	76.88	199.2	
11	659	20.21	46.4	
12	734	5.11	10.5	
13	10,380	75.00	10.9	Upper Marker

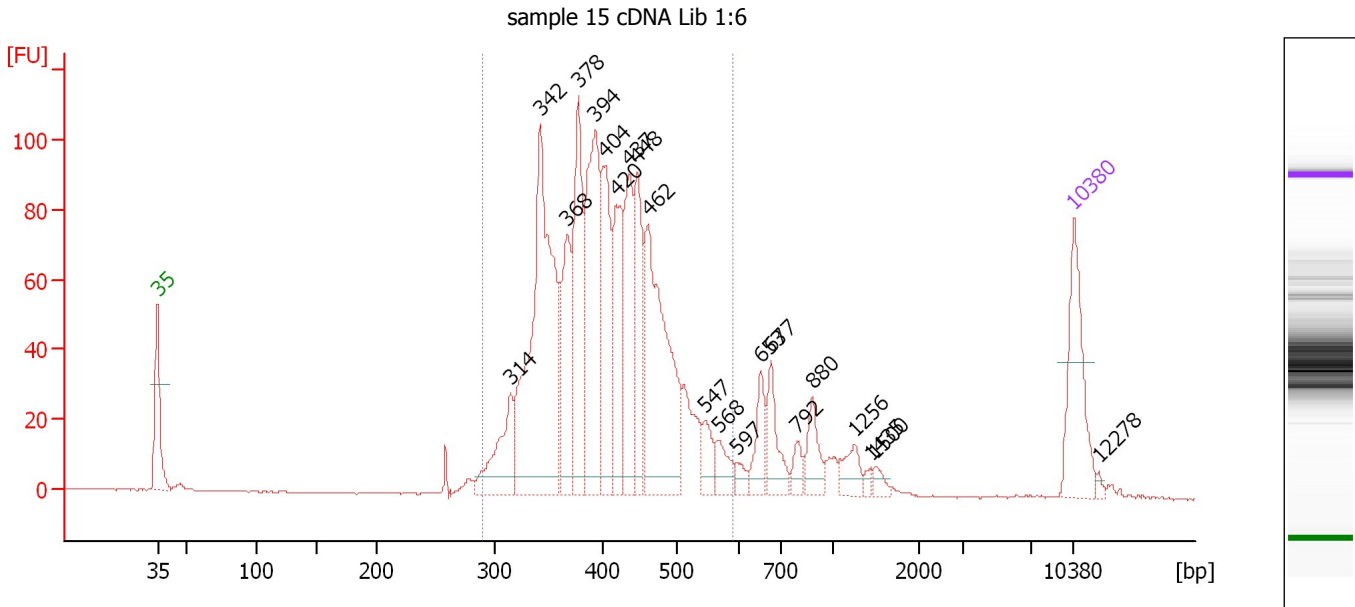
Region table for sample 7 : sample 13 cDNA Lib 1:5

From [bp]	To [bp]	Average Size [bp]	Molarity [pmol/l]	Conc. [pg/μl]	Corr. Area	% of Total	Size distribution in CV [%]	Color
311	659	442	6,600.9	1,858.77	1,455.7	96	16.8	Blue

Assay Class: High Sensitivity DNA Assay
 Data Path: C:\...ents and Settings\Bioanalyzer\2013-04-23\2013-04-23_001.xad

Created: 4/23/2013 9:06:54 AM
 Modified: 4/23/2013 9:50:09 AM

Electropherogram Summary Continued ...



Overall Results for sample 8 : sample 15 cDNA Lib 1:6

Number of peaks found: 21 Corr. Area 1: 1,364.7
 Noise: 0.2

Peak table for sample 8 : sample 15 cDNA Lib 1:6

Peak	Size [bp]	Conc. [pg/μl]	Molarity [pmol/l]	Observations
1	35	125.00	5,411.3	Lower Marker
2	314	81.31	391.9	
3	342	364.55	1,615.4	
4	368	103.70	427.3	
5	378	143.96	576.9	
6	394	200.42	770.4	
7	404	116.99	438.8	
8	420	112.02	403.8	
9	437	107.16	371.8	
10	448	96.38	325.8	
11	462	224.05	734.7	
12	547	25.39	70.4	
13	568	24.57	65.5	
14	597	10.40	26.4	
15	653	34.87	80.9	
16	677	42.98	96.2	
17	792	14.95	28.6	
18	880	31.07	53.5	
19	1,256	21.30	25.7	
20	1,435	4.72	5.0	
21	1,500	7.50	7.6	
22	10,380	75.00	10.9	Upper Marker
23	12,278	0.00	0.0	

Assay Class: High Sensitivity DNA Assay
Data Path: C:\...ents and Settings\Bioanalyzer\2013-04-23\2013-04-23_001.xad

Created: 4/23/2013 9:06:54 AM
Modified: 4/23/2013 9:50:09 AM

Electropherogram Summary Continued ...

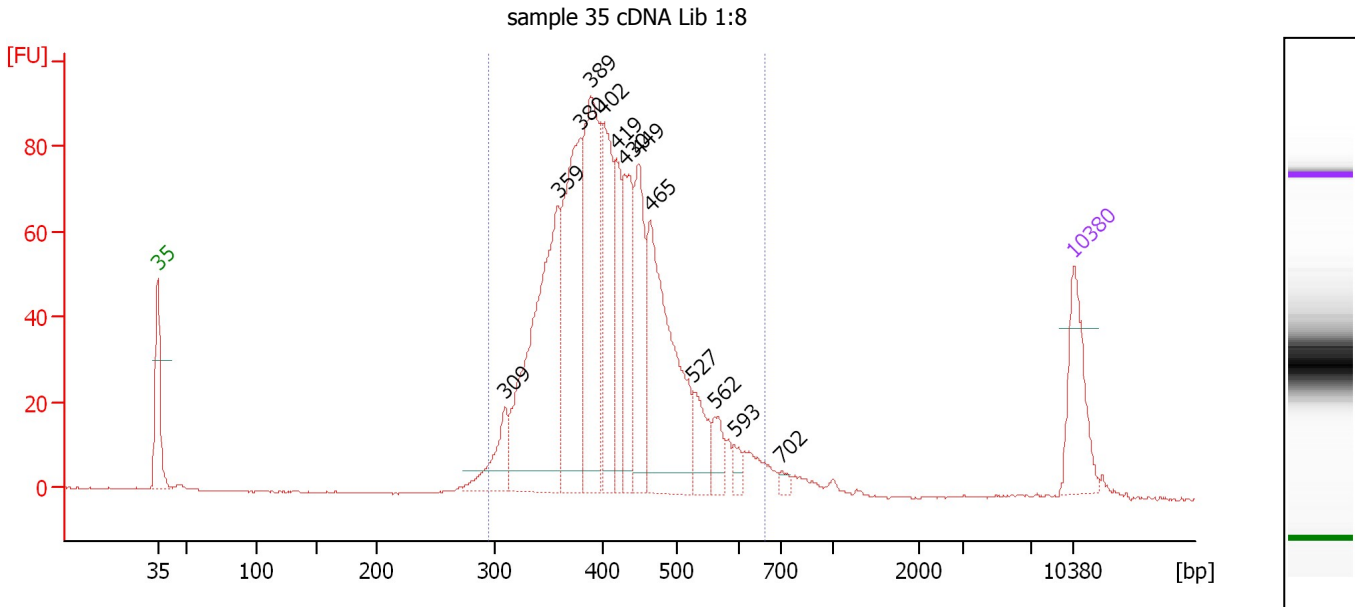
... Region table for sample 8 : sample 15 cDNA Lib 1:6

From [bp]	To [bp]	Average Size [bp]	Molarity [pmol/l]	Conc. [pg/μl]	Corr. Area	% of Total	Size distribution in CV [%]	Color
288	590	410	6,287.3	1,654.07	1,364.7	86	15.0	■

Assay Class: High Sensitivity DNA Assay
 Data Path: C:\...ents and Settings\Bioanalyzer\2013-04-23\2013-04-23_001.xad

Created: 4/23/2013 9:06:54 AM
 Modified: 4/23/2013 9:50:09 AM

Electropherogram Summary Continued ...



Overall Results for sample 9 : sample 35 cDNA Lib 1:8

Number of peaks found: 13 Corr. Area 1: 1,189.6
 Noise: 0.2

Peak table for sample 9 : sample 35 cDNA Lib 1:8

Peak	Size [bp]	Conc. [pg/μl]	Molarity [pmol/l]	Observations
1	35	125.00	5,411.3	Lower Marker
2	309	68.39	335.2	
3	359	389.86	1,646.9	
4	380	269.88	1,076.1	
5	389	278.01	1,082.2	
6	402	172.44	650.1	
7	419	97.13	351.1	
8	430	128.85	454.3	
9	449	135.53	457.7	
10	465	288.99	941.5	
11	527	52.61	151.2	
12	562	31.39	84.6	
13	593	14.73	37.6	
14	702	7.53	16.3	
15	10,380	75.00	10.9	Upper Marker

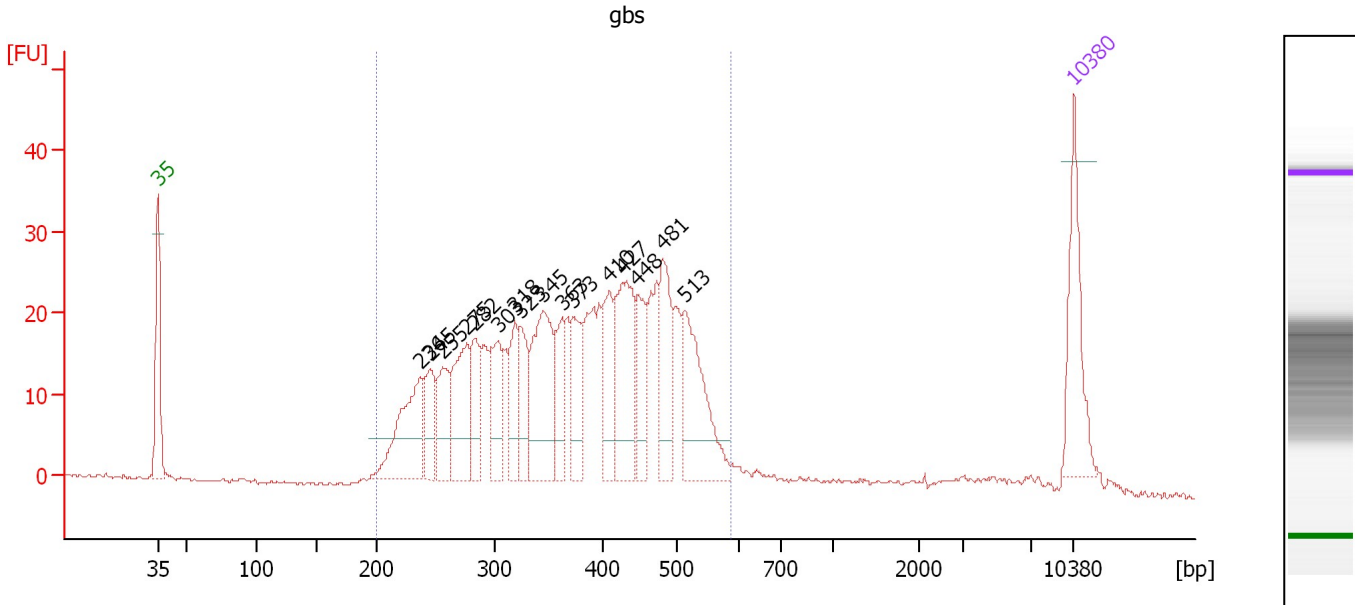
Region table for sample 9 : sample 35 cDNA Lib 1:8

From [bp]	To [bp]	Average Size [bp]	Molarity [pmol/l]	Conc. [pg/μl]	Corr. Area	% of Total	Size distribution in CV [%]	Color
294	663	417	7,200.6	1,922.28	1,189.6	98	16.1	Blue

Assay Class: High Sensitivity DNA Assay
 Data Path: C:\...ents and Settings\Bioanalyzer\2013-04-23\2013-04-23_001.xad

Created: 4/23/2013 9:06:54 AM
 Modified: 4/23/2013 9:50:09 AM

Electropherogram Summary Continued ...



Overall Results for sample 10 : gbs

Number of peaks found: 16 Corr. Area 1: 613.3
 Noise: 0.2

Peak table for sample 10 : gbs

Peak	Size [bp]	Conc. [pg/μl]	Molarity [pmol/l]	Observations
1	35	125.00	5,411.3	Lower Marker
2	236	128.99	828.4	
3	245	58.47	361.8	
4	255	61.78	367.3	
5	275	107.15	589.5	
6	282	58.36	313.3	
7	303	67.97	340.4	
8	318	60.68	288.8	
9	323	55.22	259.0	
10	345	144.64	635.8	
11	363	47.86	199.6	
12	373	65.01	264.2	
13	410	65.87	243.7	
14	427	131.65	467.1	
15	448	59.78	202.2	
16	481	88.06	277.3	
17	513	127.44	376.0	
18	10,380	75.00	10.9	Upper Marker

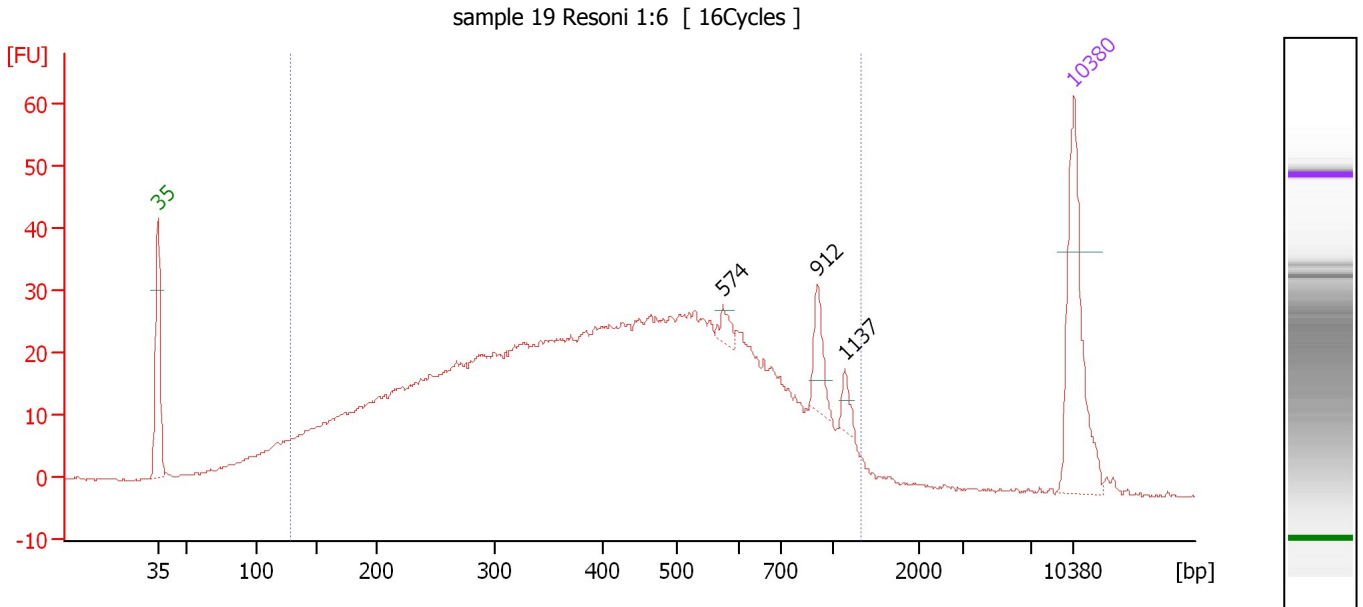
Region table for sample 10 : gbs

From [bp]	To [bp]	Average Size [bp]	Molarity [pmol/l]	Conc. [pg/μl]	Corr. Area	% of Total	Size distribution in CV [%]	Color
200	588	380	7,459.7	1,699.88	613.3	97	24.3	Blue

Assay Class: High Sensitivity DNA Assay
 Data Path: C:\...ents and Settings\Bioanalyzer\2013-04-23\2013-04-23_001.xad

Created: 4/23/2013 9:06:54 AM
 Modified: 4/23/2013 9:50:09 AM

Electropherogram Summary Continued ...



Overall Results for sample 11 : sample 19 Resoni 1:6

Number of peaks found: 3 Corr. Area 1: 1,171.0
 Noise: 0.2

Peak table for sample 11 : sample 19 Resoni 1:6

Peak	Size [bp]	Conc. [pg/µl]	Molarity [pmol/l]	Observations
1	35	125.00	5,411.3	Lower Marker
2	574	9.19	24.3	
3	912	22.54	37.5	
4	1,137	8.62	11.5	
5	10,380	75.00	10.9	Upper Marker

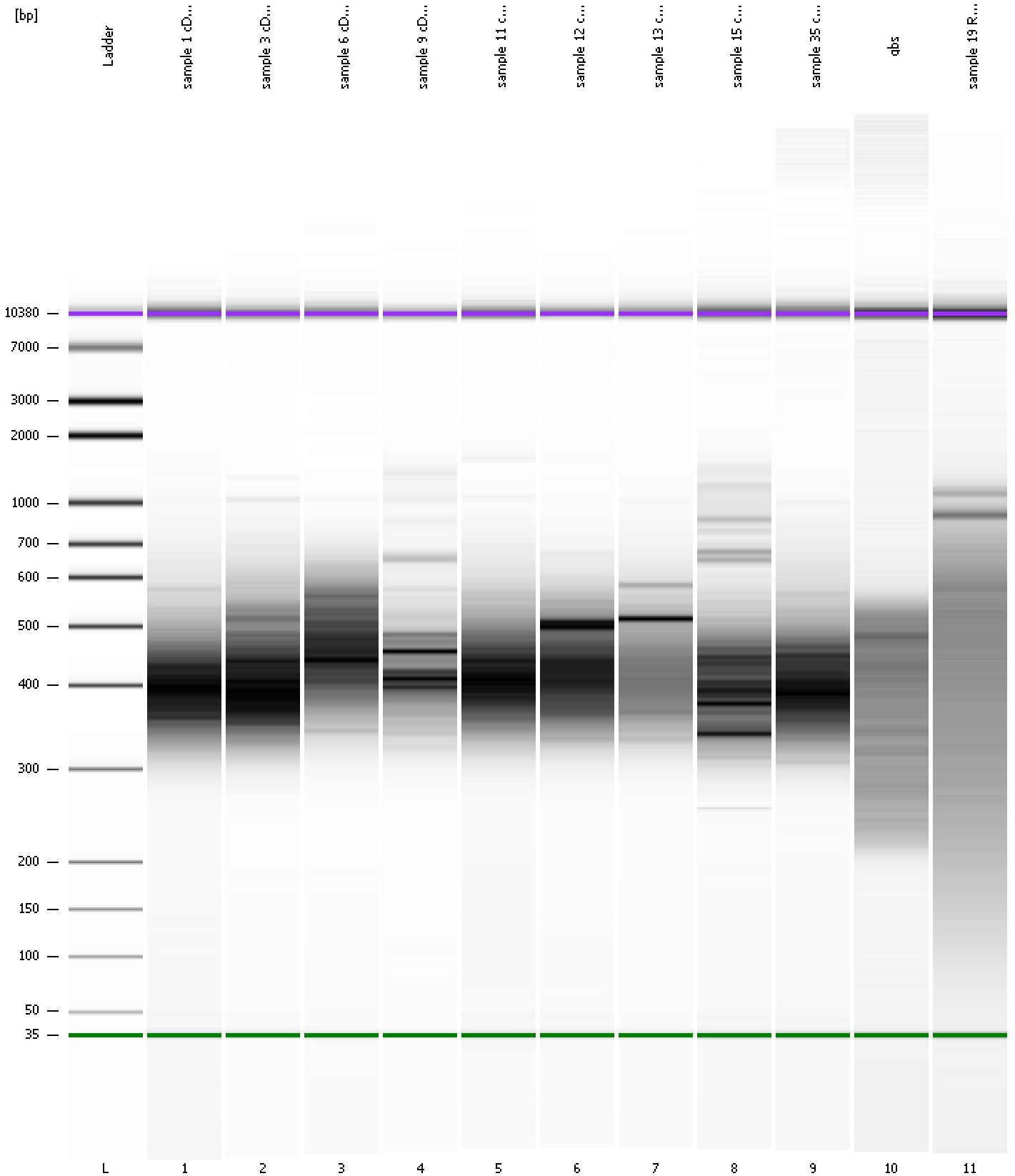
Region table for sample 11 : sample 19 Resoni 1:6

From [bp]	To [bp]	Average Size [bp]	Molarity [pmol/l]	Conc. [pg/µl]	Corr. Area	% of Total	Size distribution in CV [%]	Color
128	1,319	455	8,692.6	1,843.32	1,171.0	93	49.1	Blue

Assay Class: High Sensitivity DNA Assay
Data Path: C:\...ents and Settings\Bioanalyzer\2013-04-23\2013-04-23_001.xad

Created: 4/23/2013 9:06:54 AM
Modified: 4/23/2013 9:50:09 AM

Gel Image



Assay Class: High Sensitivity DNA Assay
 Data Path: C:\...ents and Settings\Bioanalyzer\2013-04-23\2013-04-23_001.xad

Created: 4/23/2013 9:06:54 AM
 Modified: 4/23/2013 9:50:09 AM

Run Logbook

Description	Number	Source	Category	Sub Category	Time	Time Zone	User	Host
Run ended on port 1 (Number of wells acquired: 12)		Instrument	Run		4/23/2013 9:48:14 AM	(GMT --07:00) Pacific Standard Time	UC Davis	D8XSMGH1
Run started on port 1 (File: C:\Documents and Settings\Bioanalyzer\2013-04-23\2013-04-23_001.xad)		Instrument	Run		4/23/2013 9:07:00 AM	(GMT --07:00) Pacific Standard Time	UC Davis	D8XSMGH1
Product Number : G2938B		Instrument	Run		4/23/2013 9:07:00 AM	(GMT --07:00) Pacific Standard Time	UC Davis	D8XSMGH1
Name :		Instrument	Run		4/23/2013 9:07:00 AM	(GMT --07:00) Pacific Standard Time	UC Davis	D8XSMGH1
Vendor : Agilent Technologies		Instrument	Run		4/23/2013 9:07:00 AM	(GMT --07:00) Pacific Standard Time	UC Davis	D8XSMGH1
Serial# : DE13701086		Instrument	Run		4/23/2013 9:07:00 AM	(GMT --07:00) Pacific Standard Time	UC Davis	D8XSMGH1
Firmware : C.01.069		Instrument	Run		4/23/2013 9:07:00 AM	(GMT --07:00) Pacific Standard Time	UC Davis	D8XSMGH1
Cartridge : Electrode		Instrument	Run		4/23/2013 9:07:00 AM	(GMT --07:00) Pacific Standard Time	UC Davis	D8XSMGH1