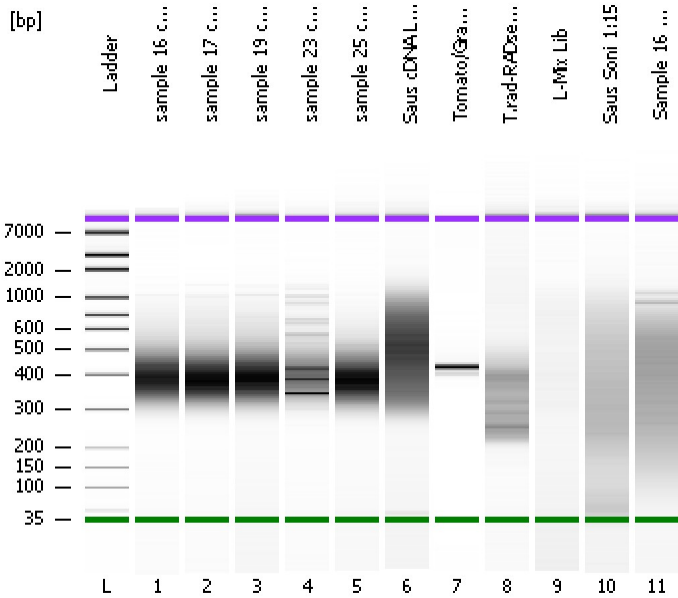


Assay Class: High Sensitivity DNA Assay
Data Path: C:\...ents and Settings\Bioanalyzer\2013-04-23\2013-04-23_005.xad

Created: 4/23/2013 4:26:24 PM
Modified: 4/23/2013 5:08:26 PM

Electrophoresis File Run Summary



Instrument Information:

Instrument Name: DE13701086 Firmware: C.01.069
Serial#: DE13701086 Type: G2938B

Assay Information:

Assay Origin Path: C:\Program Files\Agilent\2100 bioanalyzer\2100 expert\assays\dsDNA\High Sensitivity DNA.xsy
Assay Class: High Sensitivity DNA Assay
Version: 1.03
Assay Comments: Copyright © 2003-2010 Agilent Technologies

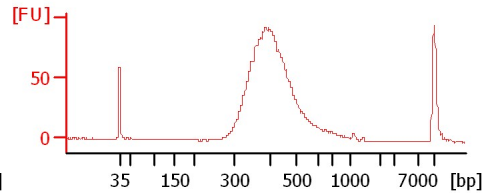
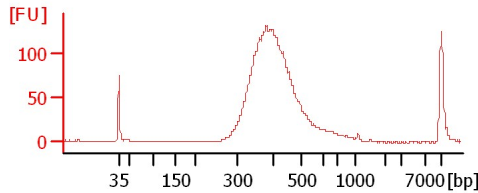
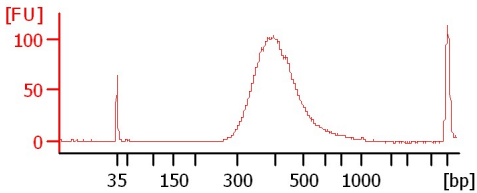
Chip Information:

Chip Lot #:
Reagent Kit Lot #:
Chip Comments:

sample 16 cDNA Lib 1:14

sample 17 cDNA Lib 1:6

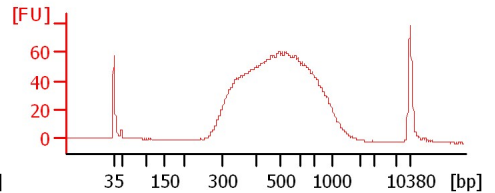
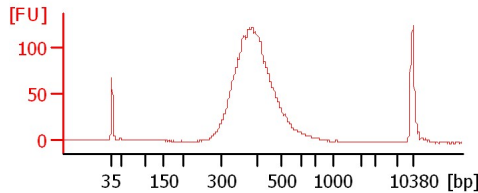
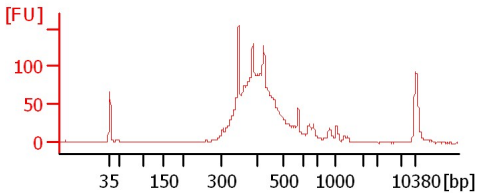
sample 19 cDNA Lib 1:10



sample 23 cDNA Lib 1:11

sample 25 cDNA Lib 1:5

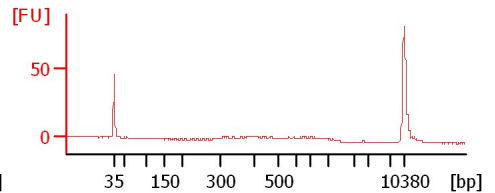
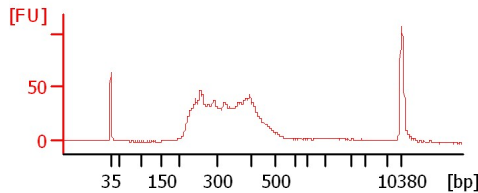
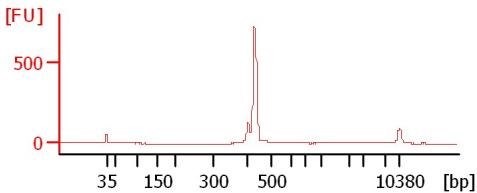
Saus cDNA Lib 1:2



Tomato/Graps Lib 1:50

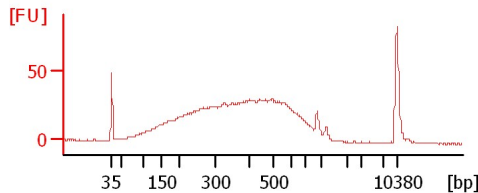
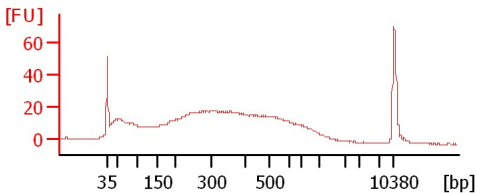
T.rad-RADseq Lib

L-Mix Lib



Saus Soni 1:15

Sample 16 Resoni 1:6



Assay Class: High Sensitivity DNA Assay
 Data Path: C:\...ents and Settings\Bioanalyzer\2013-04-23\2013-04-23_005.xad

Created: 4/23/2013 4:26:24 PM
 Modified: 4/23/2013 5:08:26 PM

Electrophoresis File Run Summary (Chip Summary)

Sample Name	Sample Comment	Rest. Digest	Status	Observation	Result Label	Result Color
sample 16 cDNA Lib 1:14		<input type="checkbox"/>	✓			
sample 17 cDNA Lib 1:6		<input type="checkbox"/>	✓			
sample 19 cDNA Lib 1:10		<input type="checkbox"/>	✓			
sample 23 cDNA Lib 1:11		<input type="checkbox"/>	✓			
sample 25 cDNA Lib 1:5		<input type="checkbox"/>	✓			
Saus cDNA Lib 1:2		<input type="checkbox"/>	✓			
Tomato/Grap 16s Lib 1:50		<input type="checkbox"/>	✓			
T.rad-RADseq Lib		<input type="checkbox"/>	✓			
L-Mix Lib		<input type="checkbox"/>	✓			
Saus Soni 1:15		<input type="checkbox"/>	✓			
Sample 16 Resoni 1:6		<input type="checkbox"/>	✓			
Ladder		<input type="checkbox"/>	✓			

Chip Lot #

Reagent Kit Lot #

Chip Comments :

Assay Class: High Sensitivity DNA Assay
 Data Path: C:\...ents and Settings\Bioanalyzer\2013-04-23\2013-04-23_005.xad

Created: 4/23/2013 4:26:24 PM
 Modified: 4/23/2013 5:08:26 PM

Electrophoresis Assay Details

General Analysis Settings

Number of Available Sample and Ladder Wells (Max.) : 12
 Minimum Visible Range [s] : 32
 Maximum Visible Range [s] : 138
 Start Analysis Time Range [s] : 33
 End Analysis Time Range [s] : 137.5
 Ladder Concentration [pg/μl] : 1950
 Uses Standard Area for Ladder Fragments
 Lower Marker Concentration [pg/μl] : 125
 Upper Marker Concentration [pg/μl] : 75
 Used Upper Marker for Quantitation
 Standard Curve Fit is Point to Point
 Show Data Aligned to Lower and Upper Marker

Integrator Settings

Integration Start Time [s] : 33.05
 Integration End Time [s] : 137
 Slope Threshold : 0.8
 Height Threshold [FU] : 5
 Area Threshold : 0.1
 Width Threshold [s] : 0.6
 Baseline Plateau [s] : 0.5

Filter Settings

Filter Width [s] : 0.5
 Polynomial Order : 4

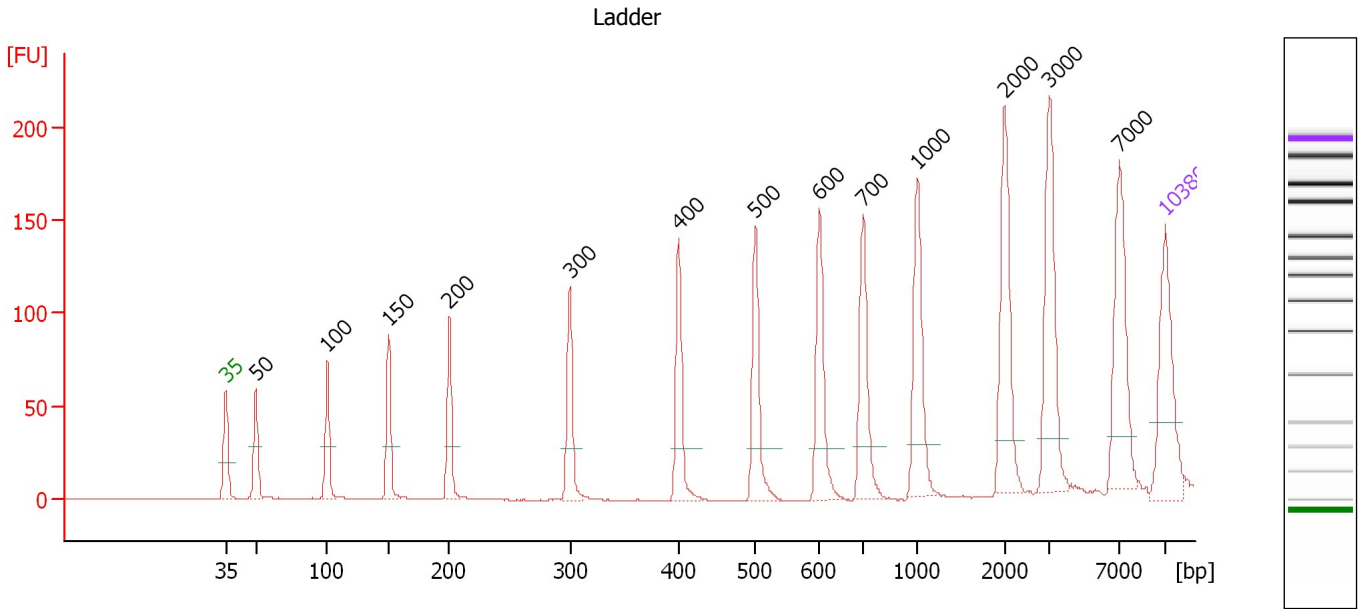
Ladder

Ladder Peak	Size	Area
1	35	160
2	50	210
3	100	208
4	150	221
5	200	242
6	300	270
7	400	305
8	500	306
9	600	336
10	700	321
11	1000	366
12	2000	413
13	3000	411
14	7000	400
15	10380	214

Assay Class: High Sensitivity DNA Assay
 Data Path: C:\...ents and Settings\Bioanalyzer\2013-04-23\2013-04-23_005.xad

Created: 4/23/2013 4:26:24 PM
 Modified: 4/23/2013 5:08:26 PM

Electropherogram Summary



Overall Results for Ladder

Noise: 0.1

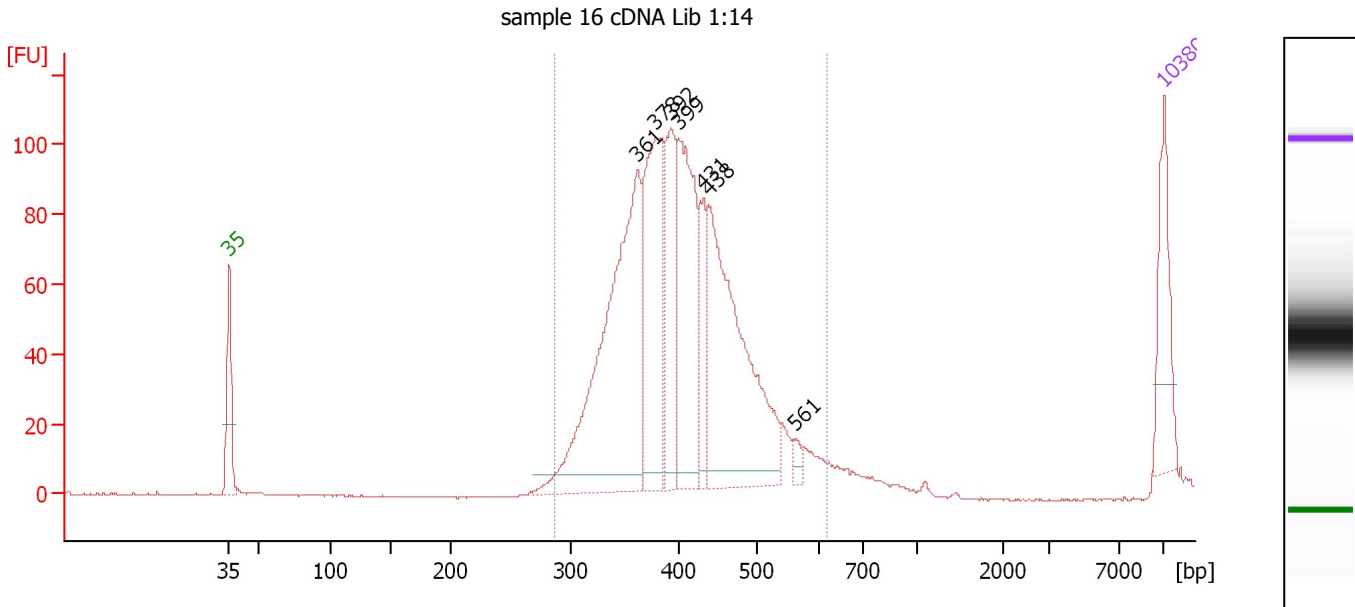
Peak table for Ladder

Peak	Size [bp]	Conc. [pg/μl]	Molarity [pmol/l]	Observations
1	35	125.00	5,411.3	Lower Marker
2	50	150.00	4,545.5	Ladder Peak
3	100	150.00	2,272.7	Ladder Peak
4	150	150.00	1,515.2	Ladder Peak
5	200	150.00	1,136.4	Ladder Peak
6	300	150.00	757.6	Ladder Peak
7	400	150.00	568.2	Ladder Peak
8	500	150.00	454.5	Ladder Peak
9	600	150.00	378.8	Ladder Peak
10	700	150.00	324.7	Ladder Peak
11	1,000	150.00	227.3	Ladder Peak
12	2,000	150.00	113.6	Ladder Peak
13	3,000	150.00	75.8	Ladder Peak
14	7,000	150.00	32.5	Ladder Peak
15	10,380	75.00	10.9	Upper Marker

Assay Class: High Sensitivity DNA Assay
 Data Path: C:\...ents and Settings\Bioanalyzer\2013-04-23\2013-04-23_005.xad

Created: 4/23/2013 4:26:24 PM
 Modified: 4/23/2013 5:08:26 PM

Electropherogram Summary Continued ...



Overall Results for sample 1 : sample 16 cDNA Lib 1:14

Number of peaks found: 7 Corr. Area 1: 1,421.4
 Noise: 0.2

Peak table for sample 1 : sample 16 cDNA Lib 1:14

Peak	Size [bp]	Conc. [pg/μl]	Molarity [pmol/l]	Observations
1	35	125.00	5,411.3	Lower Marker
2	361	502.56	2,107.9	
3	378	267.20	1,071.1	
4	392	144.89	560.3	
5	399	244.45	929.0	
6	431	81.17	285.4	
7	438	375.21	1,298.2	
8	561	11.62	31.4	
9	10,380	75.00	10.9	Upper Marker

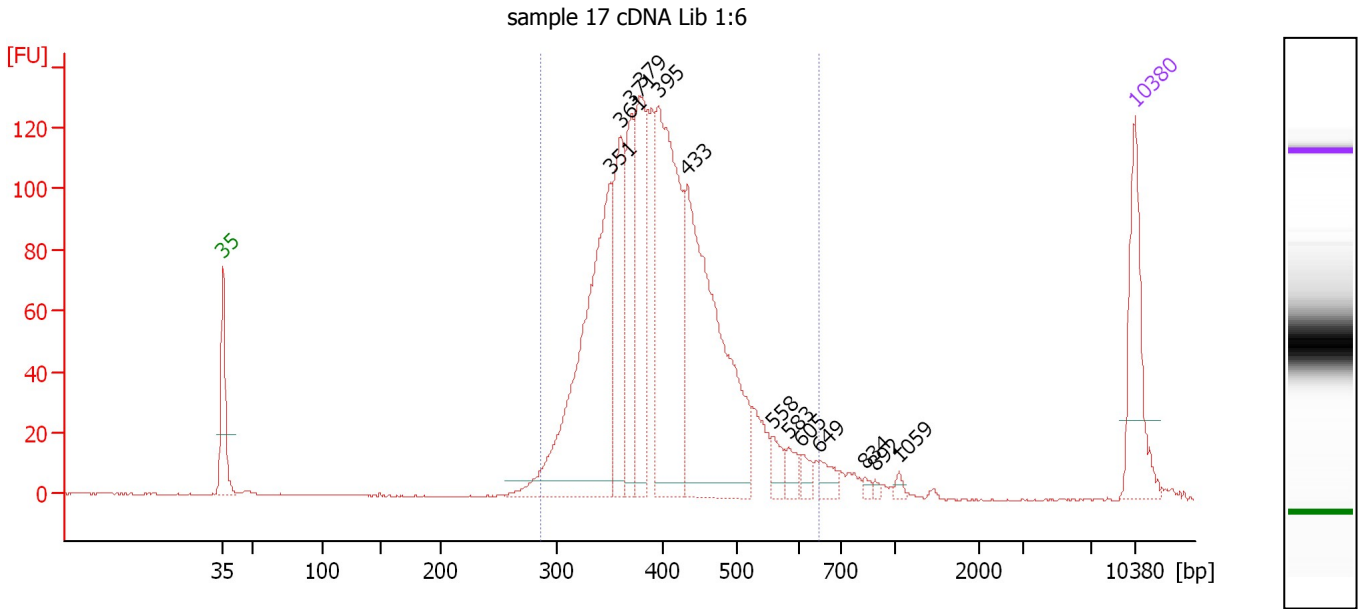
Region table for sample 1 : sample 16 cDNA Lib 1:14

From [bp]	To [bp]	Average Size [bp]	Molarity [pmol/l]	Conc. [pg/μl]	Corr. Area	% of Total	Size distribution in CV [%]	Color
285	616	406	6,367.2	1,661.90	1,421.4	98	15.1	Blue

Assay Class: High Sensitivity DNA Assay
 Data Path: C:\...ents and Settings\Bioanalyzer\2013-04-23\2013-04-23_005.xad

Created: 4/23/2013 4:26:24 PM
 Modified: 4/23/2013 5:08:26 PM

Electropherogram Summary Continued ...



Overall Results for sample 2 : sample 17 cDNA Lib 1:6

Number of peaks found: 13 Corr. Area 1: 1,856.2
 Noise: 0.2

Peak table for sample 2 : sample 17 cDNA Lib 1:6

Peak	Size [bp]	Conc. [pg/μl]	Molarity [pmol/l]	Observations
1	35	125.00	5,411.3	Lower Marker
2	351	375.09	1,621.3	
3	361	139.18	584.7	
4	371	108.52	443.5	
5	379	172.54	689.2	
6	395	316.01	1,210.7	
7	433	372.84	1,304.8	
8	558	18.07	49.1	
9	583	15.63	40.6	
10	605	11.87	29.7	
11	649	15.46	36.1	
12	834	4.15	7.5	
13	892	3.24	5.5	
14	1,059	4.95	7.1	
15	10,380	75.00	10.9	Upper Marker

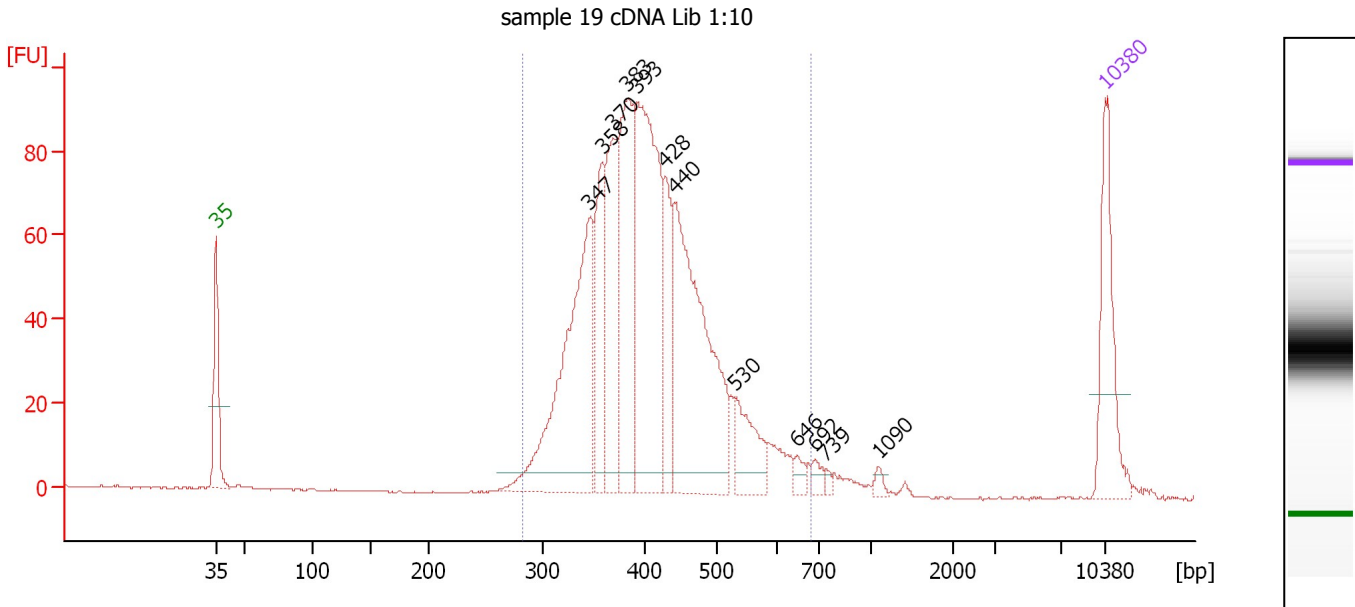
Region table for sample 2 : sample 17 cDNA Lib 1:6

From [bp]	To [bp]	Average Size [bp]	Molarity [pmol/l]	Conc. [pg/μl]	Corr. Area	% of Total	Size distribution in CV [%]	Color
286	644	407	6,336.9	1,648.63	1,856.2	96	16.4	Blue

Assay Class: High Sensitivity DNA Assay
 Data Path: C:\...ents and Settings\Bioanalyzer\2013-04-23\2013-04-23_005.xad

Created: 4/23/2013 4:26:24 PM
 Modified: 4/23/2013 5:08:26 PM

Electropherogram Summary Continued ...



Overall Results for sample 3 : sample 19 cDNA Lib 1:10

Number of peaks found: 12 Corr. Area 1: 1,349.8
 Noise: 0.2

Peak table for sample 3 : sample 19 cDNA Lib 1:10

Peak	Size [bp]	Conc. [pg/μl]	Molarity [pmol/l]	Observations
1	35	125.00	5,411.3	Lower Marker
2	347	290.43	1,269.9	
3	358	107.58	454.8	
4	370	134.34	550.4	
5	383	191.35	756.4	
6	393	294.70	1,137.2	
7	428	76.13	269.2	
8	440	294.75	1,014.5	
9	530	57.30	164.0	
10	646	9.72	22.8	
11	692	9.96	21.8	
12	739	3.64	7.5	
13	1,090	5.43	7.5	
14	10,380	75.00	10.9	Upper Marker

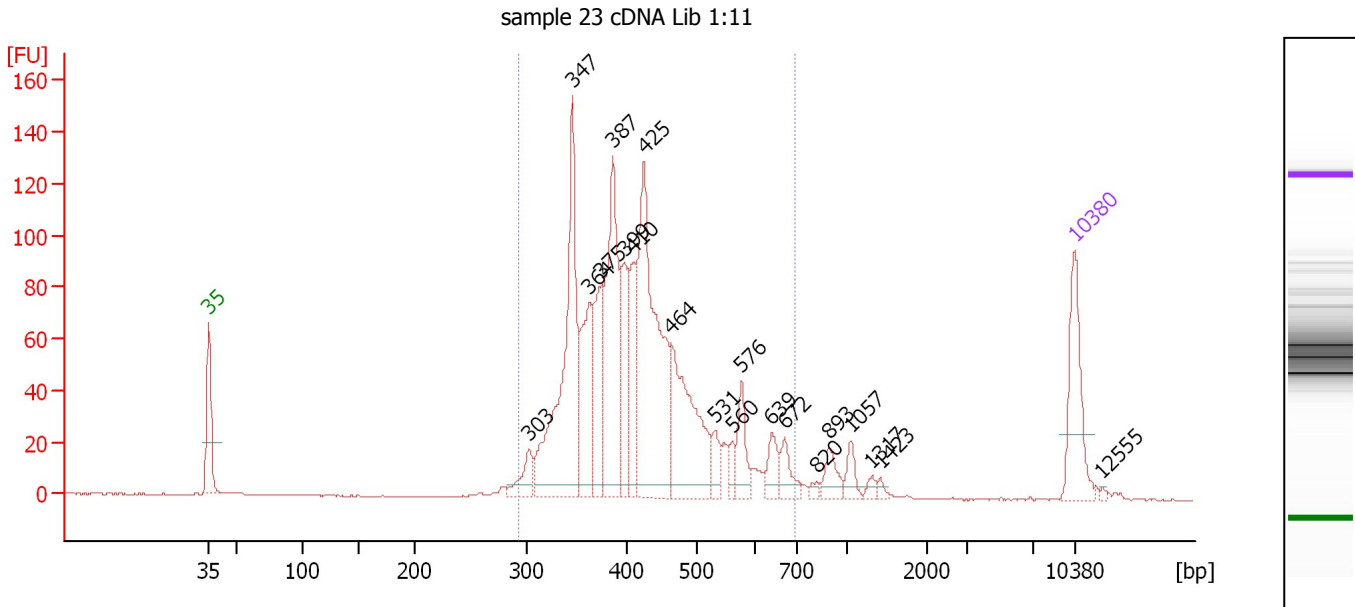
Region table for sample 3 : sample 19 cDNA Lib 1:10

From [bp]	To [bp]	Average Size [bp]	Molarity [pmol/l]	Conc. [pg/μl]	Corr. Area	% of Total	Size distribution in CV [%]	Color
283	682	413	5,707.1	1,502.24	1,349.8	96	17.4	Blue

Assay Class: High Sensitivity DNA Assay
 Data Path: C:\...ents and Settings\Bioanalyzer\2013-04-23\2013-04-23_005.xad

Created: 4/23/2013 4:26:24 PM
 Modified: 4/23/2013 5:08:26 PM

Electropherogram Summary Continued ...



Overall Results for sample 4 : sample 23 cDNA Lib 1:11

Number of peaks found: 20 Corr. Area 1: 1,474.4
 Noise: 0.2

Peak table for sample 4 : sample 23 cDNA Lib 1:11

Peak	Size [bp]	Conc. [pg/μl]	Molarity [pmol/l]	Observations
1	35	125.00	5,411.3	Lower Marker
2	303	37.52	187.7	
3	347	314.24	1,373.9	
4	364	123.24	513.6	
5	375	102.73	415.4	
6	387	216.76	848.7	
7	399	81.90	311.3	
8	410	93.09	343.9	
9	425	324.88	1,157.6	
10	464	186.50	609.4	
11	531	24.67	70.4	
12	560	15.06	40.7	
13	576	41.18	108.4	
14	639	28.27	67.1	
15	672	28.27	63.8	
16	820	5.90	10.9	
17	893	24.68	41.9	
18	1,057	17.38	24.9	
19	1,317	6.77	7.8	
20	1,423	4.69	5.0	
21	10,380	75.00	10.9	Upper Marker
22	12,555	0.00	0.0	

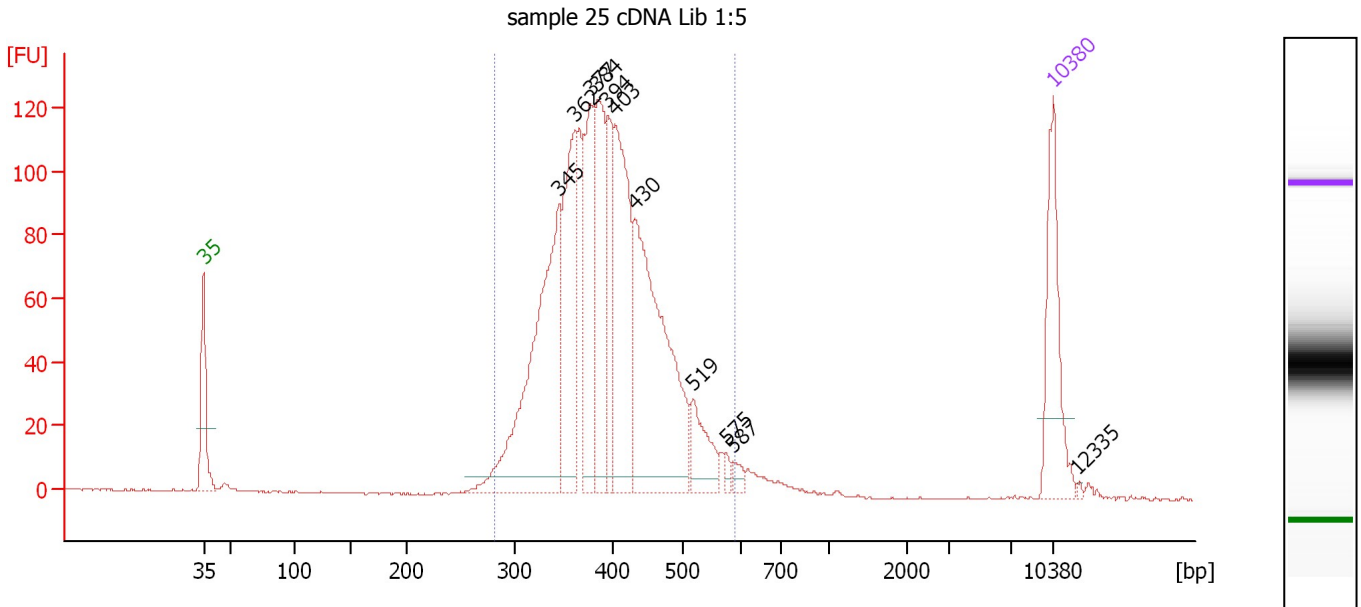
Region table for sample 4 : sample 23 cDNA Lib 1:11

From [bp]	To [bp]	Average Size [bp]	Molarity [pmol/l]	Conc. [pg/μl]	Corr. Area	% of Total	Size distribution in CV [%]	Color
293	696	423	6,161.5	1,650.49	1,474.4	94	19.1	Blue

Assay Class: High Sensitivity DNA Assay
 Data Path: C:\...ents and Settings\Bioanalyzer\2013-04-23\2013-04-23_005.xad

Created: 4/23/2013 4:26:24 PM
 Modified: 4/23/2013 5:08:26 PM

Electropherogram Summary Continued ...



Overall Results for sample 5 : sample 25 cDNA Lib 1:5

Number of peaks found: 11 Corr. Area 1: 1,689.4
 Noise: 0.2

Peak table for sample 5 : sample 25 cDNA Lib 1:5

Peak	Size [bp]	Conc. [pg/μl]	Molarity [pmol/l]	Observations
1	35	125.00	5,411.3	Lower Marker
2	345	311.05	1,367.2	
3	362	156.80	657.2	
4	377	135.46	544.1	
5	384	137.07	540.5	
6	394	82.31	316.5	
7	403	185.37	696.9	
8	430	284.08	1,001.2	
9	519	49.40	144.2	
10	575	6.12	16.1	
11	587	8.61	22.2	
12	10,380	75.00	10.9	Upper Marker
13	12,335	0.00	0.0	

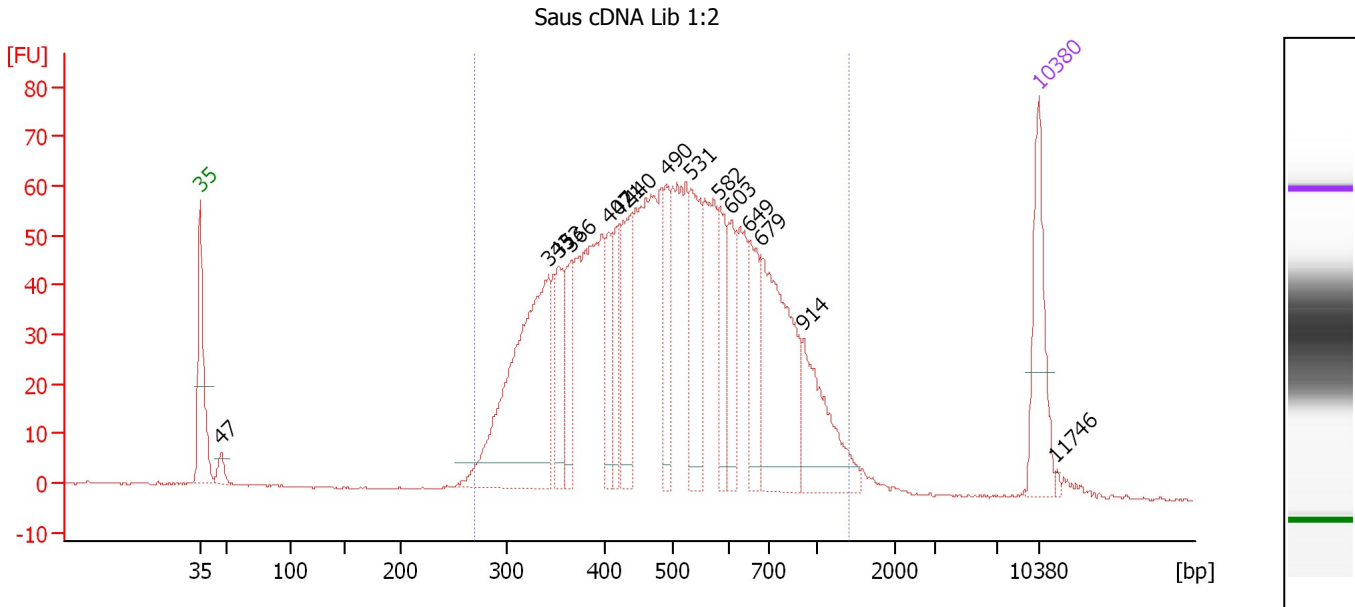
Region table for sample 5 : sample 25 cDNA Lib 1:5

From [bp]	To [bp]	Average Size [bp]	Molarity [pmol/l]	Conc. [pg/μl]	Corr. Area	% of Total	Size distribution in CV [%]	Color
282	592	399	5,603.1	1,435.69	1,689.4	96	15.1	Blue

Assay Class: High Sensitivity DNA Assay
 Data Path: C:\...ents and Settings\Bioanalyzer\2013-04-23\2013-04-23_005.xad

Created: 4/23/2013 4:26:24 PM
 Modified: 4/23/2013 5:08:26 PM

Electropherogram Summary Continued ...



Overall Results for sample 6 : Saus cDNA Lib 1:2

Number of peaks found: 15 Corr. Area 1: 1,694.9
 Noise: 0.2

Peak table for sample 6 : Saus cDNA Lib 1:2

Peak	Size [bp]	Conc. [pg/μl]	Molarity [pmol/l]	Observations
1	35	125.00	5,411.3	Lower Marker
2	47	18.39	596.6	
3	343	338.07	1,495.1	
4	353	64.13	275.2	
5	366	63.95	265.0	
6	407	54.07	201.4	
7	421	54.74	197.2	
8	440	90.18	310.4	
9	490	64.74	200.2	
10	531	106.30	303.4	
11	582	62.72	163.2	
12	603	55.31	139.0	
13	649	69.80	162.9	
14	679	196.65	438.6	
15	914	100.72	167.0	
16	10,380	75.00	10.9	Upper Marker
17	11,746	0.00	0.0	

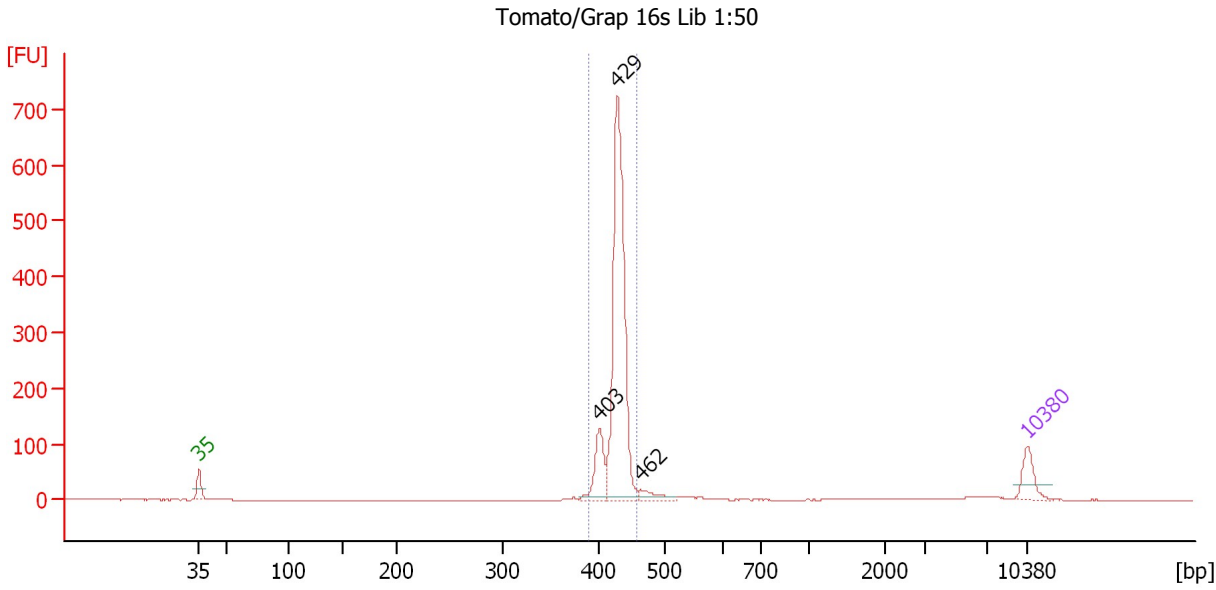
Region table for sample 6 : Saus cDNA Lib 1:2

From [bp]	To [bp]	Average Size [bp]	Molarity [pmol/l]	Conc. [pg/μl]	Corr. Area	% of Total	Size distribution in CV [%]	Color
271	1,417	530	7,432.0	2,248.72	1,694.9	97	36.1	Blue

Assay Class: High Sensitivity DNA Assay
 Data Path: C:\...ents and Settings\Bioanalyzer\2013-04-23\2013-04-23_005.xad

Created: 4/23/2013 4:26:24 PM
 Modified: 4/23/2013 5:08:26 PM

Electropherogram Summary Continued ...



Overall Results for sample 7 : Tomato/Grap 16s Lib 1:50

Number of peaks found: 3 Corr. Area 1: 1,178.7
 Noise: 0.2

Peak table for sample 7 : Tomato/Grap 16s Lib 1:50

Peak	Size [bp]	Conc. [pg/μl]	Molarity [pmol/l]	Observations
1	35	125.00	5,411.3	Lower Marker
2	403	175.28	659.8	
3	429	1,131.64	4,001.1	
4	462	50.08	164.1	
5	10,380	75.00	10.9	Upper Marker

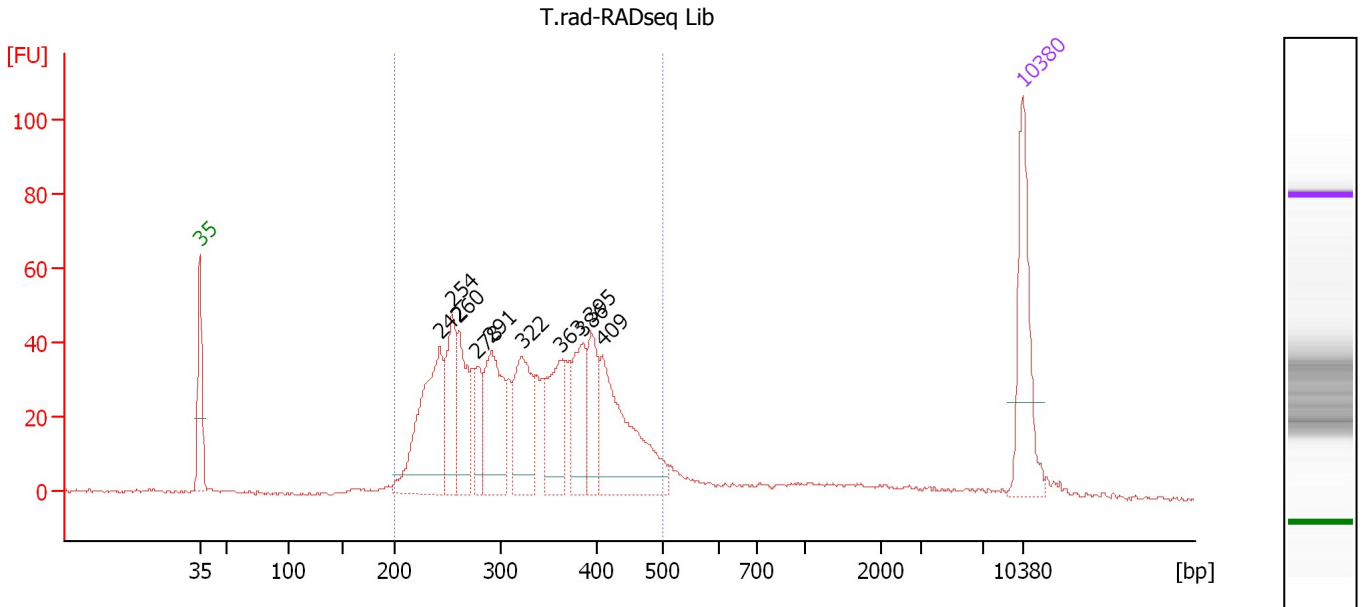
Region table for sample 7 : Tomato/Grap 16s Lib 1:50

From [bp]	To [bp]	Average Size [bp]	Molarity [pmol/l]	Conc. [pg/μl]	Corr. Area	% of Total	Size distribution in CV [%]	Color
391	456	428	4,566.4	1,287.97	1,178.7	88	2.8	Blue

Assay Class: High Sensitivity DNA Assay
 Data Path: C:\...ents and Settings\Bioanalyzer\2013-04-23\2013-04-23_005.xad

Created: 4/23/2013 4:26:24 PM
 Modified: 4/23/2013 5:08:26 PM

Electropherogram Summary Continued ...



Overall Results for sample 8 : T.rad-RADseq Lib

Number of peaks found: 10 Corr. Area 1: 995.9
 Noise: 0.4

Peak table for sample 8 : T.rad-RADseq Lib

Peak	Size [bp]	Conc. [pg/μl]	Molarity [pmol/l]	Observations
1	35	125.00	5,411.3	Lower Marker
2	242	171.76	1,075.5	
3	254	85.74	511.2	
4	260	74.63	434.6	
5	278	37.15	202.6	
6	291	113.41	590.5	
7	322	99.01	466.0	
8	363	86.88	362.3	
9	386	71.14	279.4	
10	395	55.75	214.0	
11	409	145.71	539.6	
12	10,380	75.00	10.9	Upper Marker

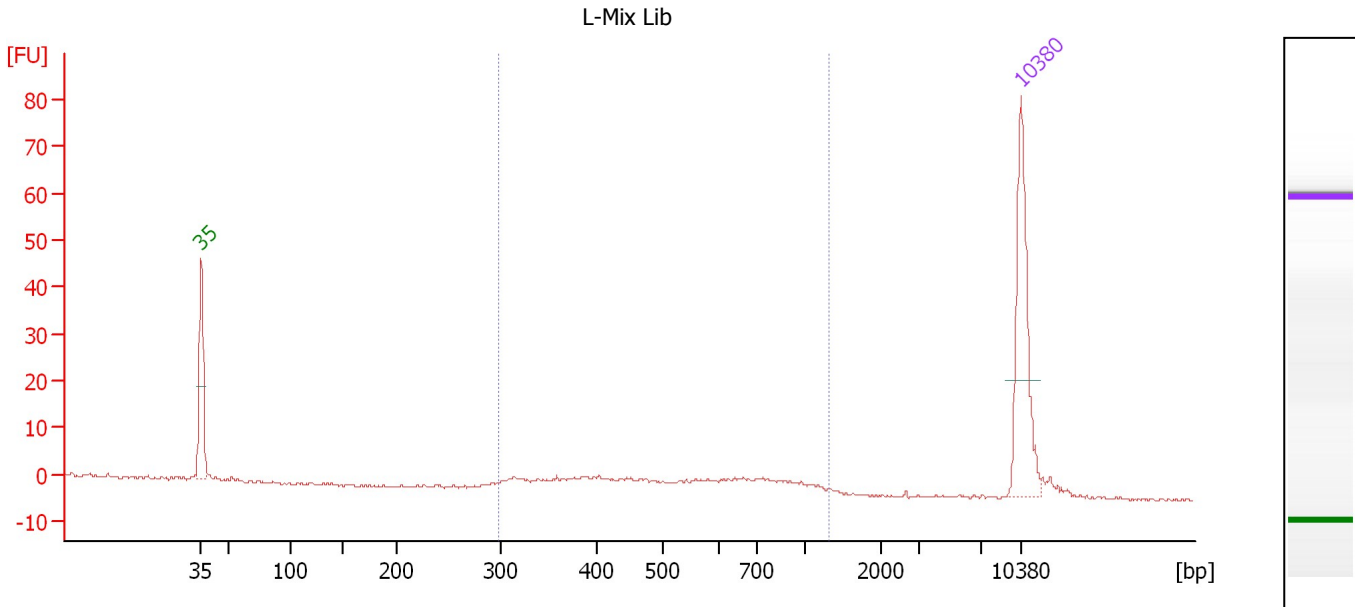
Region table for sample 8 : T.rad-RADseq Lib

From [bp]	To [bp]	Average Size [bp]	Molarity [pmol/l]	Conc. [pg/μl]	Corr. Area	% of Total	Size distribution in CV [%]	Color
200	500	330	5,234.3	1,066.11	995.9	88	21.7	Blue

Assay Class: High Sensitivity DNA Assay
 Data Path: C:\...ents and Settings\Bioanalyzer\2013-04-23\2013-04-23_005.xad

Created: 4/23/2013 4:26:24 PM
 Modified: 4/23/2013 5:08:26 PM

Electropherogram Summary Continued ...



Overall Results for sample 9 : L-Mix Lib

Number of peaks found: 0 Corr. Area 1: 54.5
 Noise: 0.3

Peak table for sample 9 : L-Mix Lib

Peak	Size [bp]	Conc. [pg/μl]	Molarity [pmol/l]	Observations
1	35	125.00	5,411.3	Lower Marker
2	10,380	75.00	10.9	Upper Marker

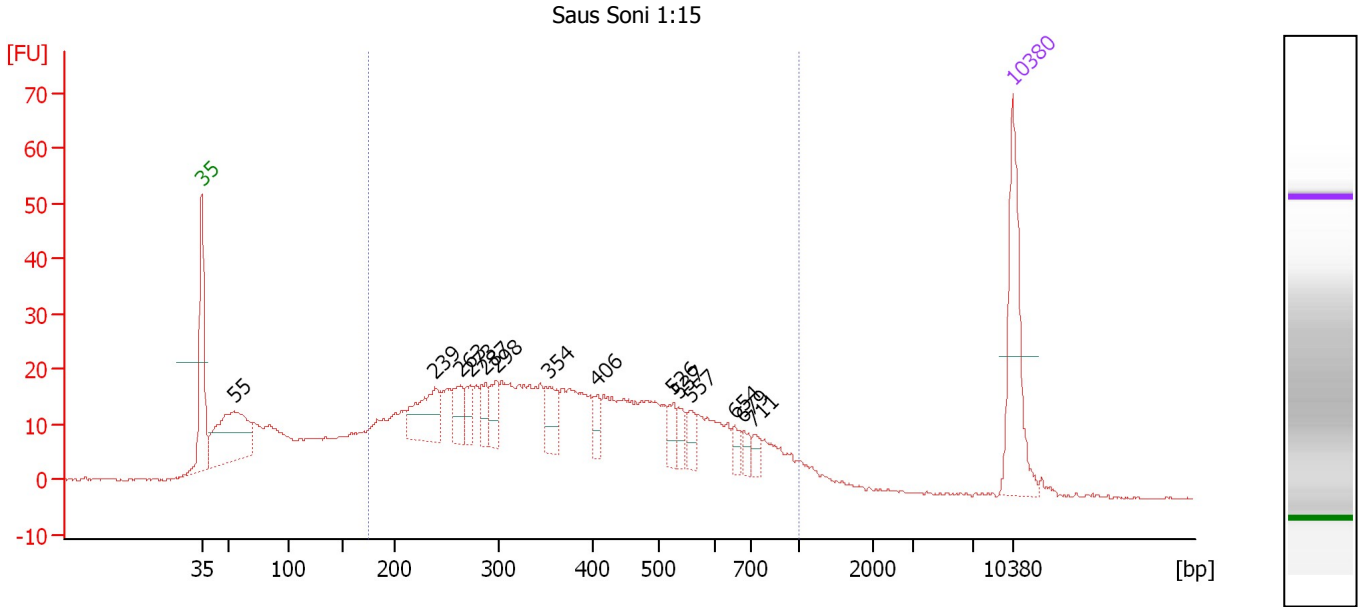
Region table for sample 9 : L-Mix Lib

From [bp]	To [bp]	Average Size [bp]	Molarity [pmol/l]	Conc. [pg/μl]	Corr. Area	% of Total	Size distribution in CV [%]	Color
297	1,315	574	211.9	68.22	54.5	87	36.6	Blue

Assay Class: High Sensitivity DNA Assay
 Data Path: C:\...ents and Settings\Bioanalyzer\2013-04-23\2013-04-23_005.xad

Created: 4/23/2013 4:26:24 PM
 Modified: 4/23/2013 5:08:26 PM

Electropherogram Summary Continued ...



Overall Results for sample 10 : Saus Soni 1:15

Number of peaks found: 14 Corr. Area 1: 764.0
 Noise: 0.2

Peak table for sample 10 : Saus Soni 1:15

Peak	Size [bp]	Conc. [pg/μl]	Molarity [pmol/l]	Observations
1	35	125.00	5,411.3	Lower Marker
2	55	133.66	3,649.6	
3	239	63.75	404.6	
4	263	25.41	146.2	
5	273	20.46	113.7	
6	287	21.93	115.6	
7	298	25.14	127.7	
8	354	33.16	141.8	
9	406	14.17	52.9	
10	526	15.18	43.7	
11	537	12.47	35.2	
12	557	14.90	40.5	
13	654	10.58	24.5	
14	679	9.19	20.5	
15	711	9.90	21.1	
16	10,380	75.00	10.9	Upper Marker

Region table for sample 10 : Saus Soni 1:15

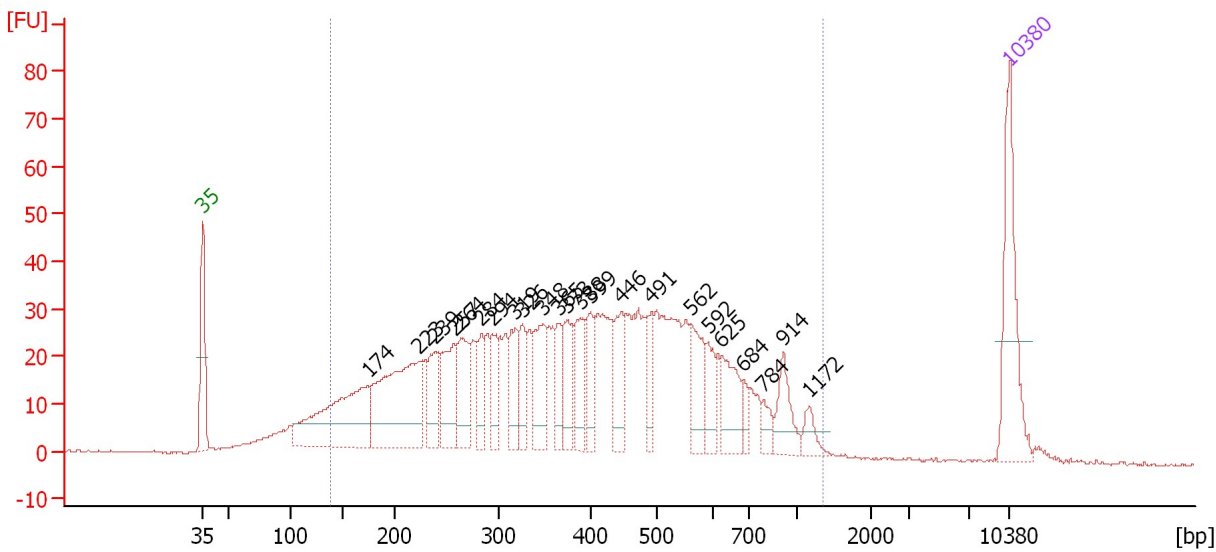
From [bp]	To [bp]	Average Size [bp]	Molarity [pmol/l]	Conc. [pg/μl]	Corr. Area	% of Total	Size distribution in CV [%]	Color
174	1,000	405	5,662.8	1,203.78	764.0	72	41.5	Blue

Assay Class: High Sensitivity DNA Assay
 Data Path: C:\...ents and Settings\Bioanalyzer\2013-04-23\2013-04-23_005.xad

Created: 4/23/2013 4:26:24 PM
 Modified: 4/23/2013 5:08:26 PM

Electropherogram Summary Continued ...

Sample 16 Resoni 1:6



Overall Results for sample 11 : Sample 16 Resoni 1:6

Number of peaks found: 23 Corr. Area 1: 1,296.9
 Noise: 0.2

Peak table for sample 11 : Sample 16 Resoni 1:6

Peak	Size [bp]	Conc. [pg/μl]	Molarity [pmol/l]	Observations
1	35	125.00	5,411.3	Lower Marker
2	174	170.22	1,480.8	
3	223	176.58	1,197.4	
4	239	48.71	308.2	
5	257	67.46	397.0	
6	264	57.63	330.5	
7	284	33.24	177.5	
8	294	33.07	170.4	
9	319	41.54	197.6	
10	326	35.09	163.1	
11	348	55.98	243.9	
12	365	30.78	127.8	
13	373	44.00	178.5	
14	388	41.44	161.7	
15	399	37.41	142.0	
16	446	46.76	159.0	
17	491	29.12	89.9	
18	562	47.27	127.4	
19	592	26.07	66.7	
20	625	46.12	111.7	
21	684	11.97	26.5	
22	784	13.26	25.6	
23	914	31.86	52.8	
24	1,172	12.81	16.6	
25	10,380	75.00	10.9	Upper Marker

Assay Class: High Sensitivity DNA Assay
Data Path: C:\...ents and Settings\Bioanalyzer\2013-04-23\2013-04-23_005.xad

Created: 4/23/2013 4:26:24 PM
Modified: 4/23/2013 5:08:26 PM

Electropherogram Summary Continued ...

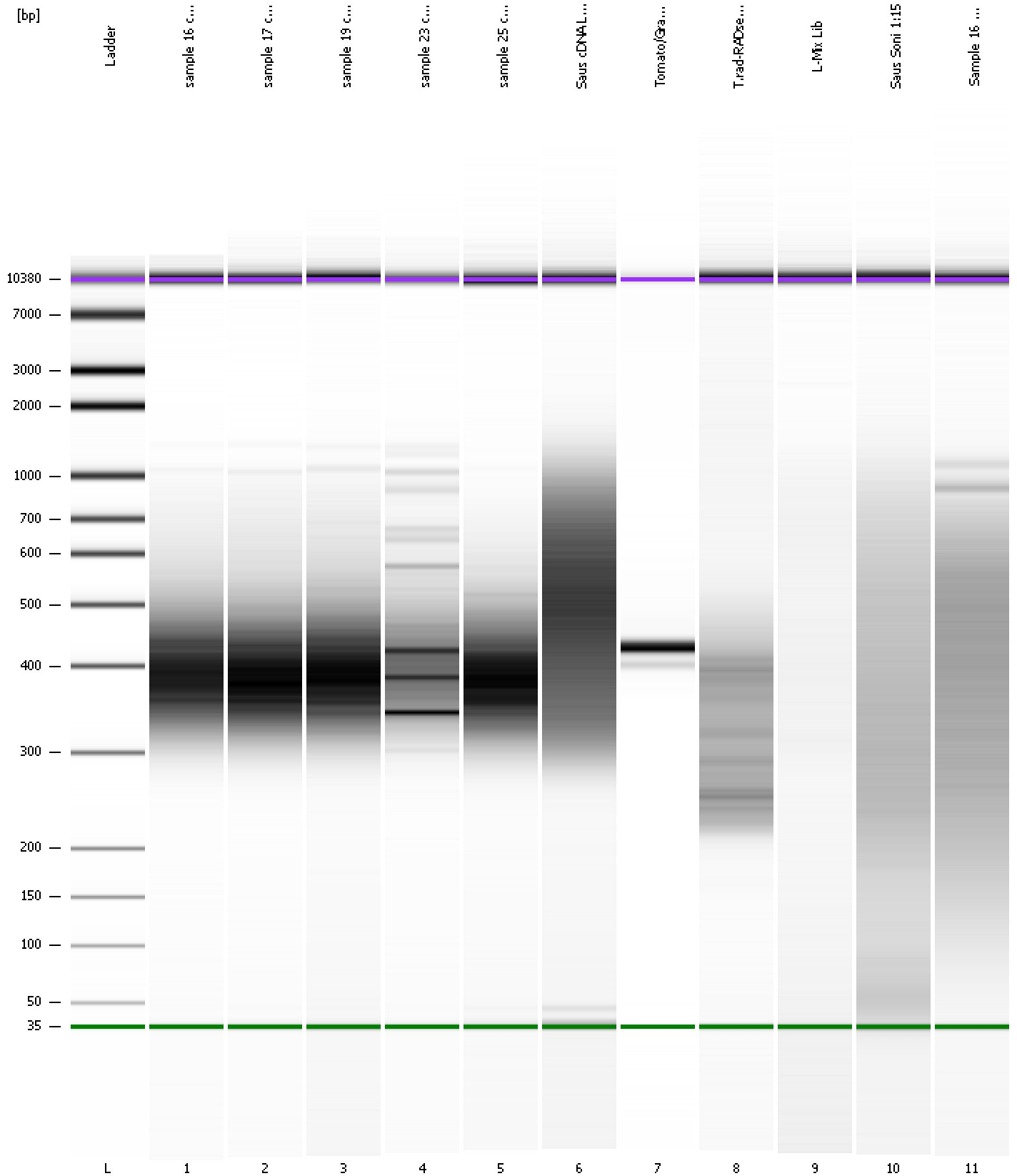
... Region table for sample 11 : Sample 16 Resoni 1:6

From [bp]	To [bp]	Average Size [bp]	Molarity [pmol/l]	Conc. [pg/μl]	Corr. Area	% of Total	Size distribution in CV [%]	Color
138	1,345	423	8,489.9	1,752.46	1,296.9	92	46.7	■

Assay Class: High Sensitivity DNA Assay
Data Path: C:\...ents and Settings\Bioanalyzer\2013-04-23\2013-04-23_005.xad

Created: 4/23/2013 4:26:24 PM
Modified: 4/23/2013 5:08:26 PM

Gel Image



Assay Class: High Sensitivity DNA Assay
 Data Path: C:\...ents and Settings\Bioanalyzer\2013-04-23\2013-04-23_005.xad

Created: 4/23/2013 4:26:24 PM
 Modified: 4/23/2013 5:08:26 PM

Run Logbook

Description	Number	Source	Category	Sub Category	Time	Time Zone	User	Host
Run ended on port 1 (Number of wells acquired: 12)		Instrument	Run		4/23/2013 5:07:43 PM	(GMT --07:00) Pacific Standard Time	UC Davis	D8XSMGH1
Run started on port 1 (File: C:\Documents and Settings\Bioanalyzer\2013-04-23\2013-04-23_005.xad)		Instrument	Run		4/23/2013 4:26:29 PM	(GMT --07:00) Pacific Standard Time	UC Davis	D8XSMGH1
Product Number : G2938B		Instrument	Run		4/23/2013 4:26:29 PM	(GMT --07:00) Pacific Standard Time	UC Davis	D8XSMGH1
Name :		Instrument	Run		4/23/2013 4:26:29 PM	(GMT --07:00) Pacific Standard Time	UC Davis	D8XSMGH1
Vendor : Agilent Technologies		Instrument	Run		4/23/2013 4:26:29 PM	(GMT --07:00) Pacific Standard Time	UC Davis	D8XSMGH1
Serial# : DE13701086		Instrument	Run		4/23/2013 4:26:29 PM	(GMT --07:00) Pacific Standard Time	UC Davis	D8XSMGH1
Firmware : C.01.069		Instrument	Run		4/23/2013 4:26:29 PM	(GMT --07:00) Pacific Standard Time	UC Davis	D8XSMGH1
Cartridge : Electrode		Instrument	Run		4/23/2013 4:26:29 PM	(GMT --07:00) Pacific Standard Time	UC Davis	D8XSMGH1