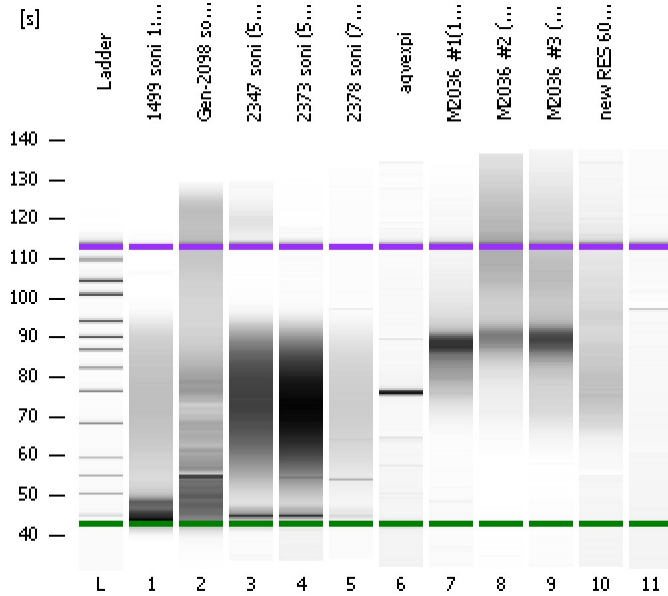


Assay Class: High Sensitivity DNA Assay
 Data Path: C:\...ents and Settings\Bioanalyzer\2013-05-13\2013-05-13_004.xad

Created: 5/13/2013 2:08:40 PM
 Modified: 5/13/2013 2:49:59 PM

Electrophoresis File Run Summary



Instrument Information:

Instrument Name: DE13701086 Firmware: C.01.069
 Serial#: DE13701086 Type: G2938B

Assay Information:

Assay Origin Path: C:\Program Files\Agilent\2100 bioanalyzer\2100 expert\assays\dsDNA\High Sensitivity DNA.xsy
 Assay Class: High Sensitivity DNA Assay
 Version: 1.03
 Assay Comments: Copyright © 2003-2010 Agilent Technologies

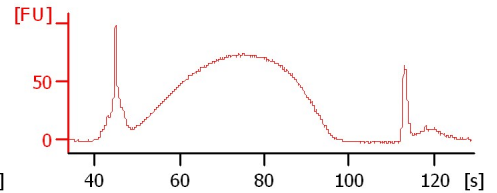
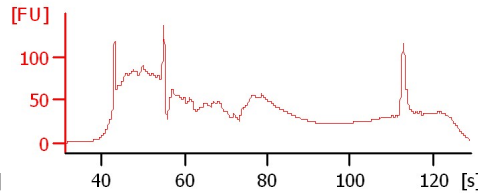
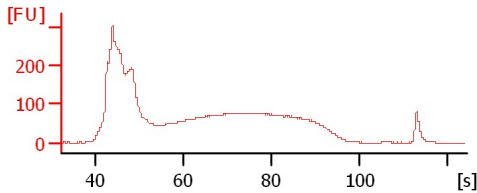
Chip Information:

Chip Lot #:
 Reagent Kit Lot #:
 Chip Comments:

1499 soni 1:2 (5+2) 5/13

Gen-2098 soni 1:2 (5+1) 5/13

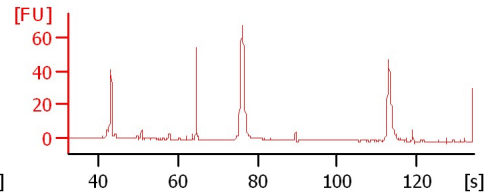
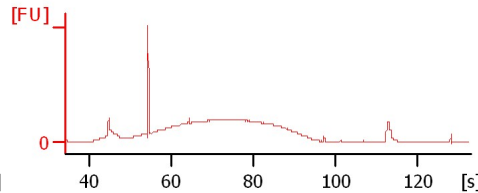
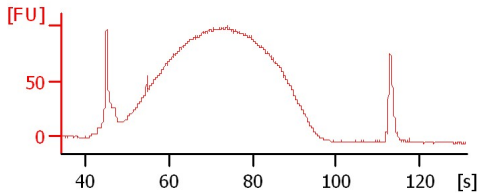
2347 soni (5+1+1) 5/13



2373 soni (5+1+1) 5/13

2378 soni (7 cyc) 5/13

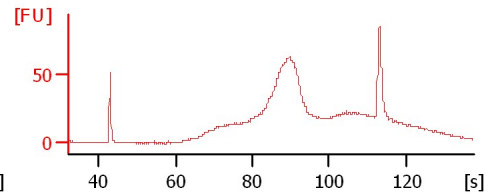
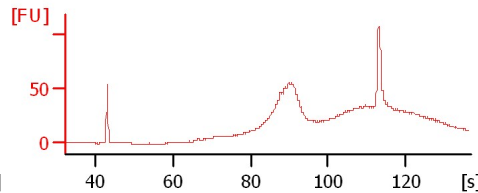
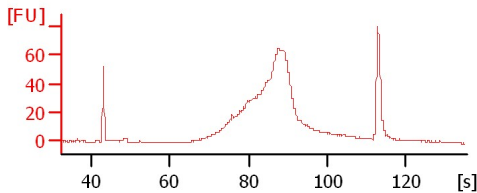
aqvexpi



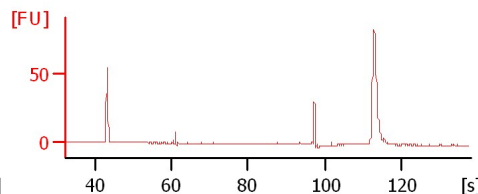
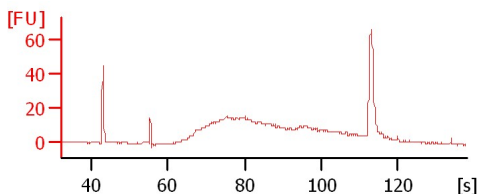
M2036 #1(1:2)

M2036 #2 (1:2)

M2036 #3 (1:2)



new RES 600 (1:2)



Assay Class: High Sensitivity DNA Assay
Data Path: C:\...ents and Settings\Bioanalyzer\2013-05-13\2013-05-13_004.xad

Created: 5/13/2013 2:08:40 PM
Modified: 5/13/2013 2:49:59 PM

Electrophoresis File Run Summary (Chip Summary)

Sample Name	Sample Comment	Rest. Digest	Status	Observation	Result Label	Result Color
1499 soni 1:2 (5+2) 5/13		<input type="checkbox"/>	✓			
Gen-2098 soni 1:2 (5+1) 5/13		<input type="checkbox"/>	✓			
2347 soni (5+1+1) 5/13		<input type="checkbox"/>	✓			
2373 soni (5+1+1) 5/13		<input type="checkbox"/>	✓			
2378 soni (7 cyc) 5/13		<input type="checkbox"/>	✓			
aqvexpi		<input type="checkbox"/>	✓			
M2036 #1(1:2)		<input type="checkbox"/>	✓			
M2036 #2 (1:2)		<input type="checkbox"/>	✓			
M2036 #3 (1:2)		<input type="checkbox"/>	✓			
new RES 600 (1:2)		<input type="checkbox"/>	✓			
Ladder		<input type="checkbox"/>	✓			

Chip Lot #

Reagent Kit Lot #

Chip Comments :

Assay Class: High Sensitivity DNA Assay
Data Path: C:\...ents and Settings\Bioanalyzer\2013-05-13\2013-05-13_004.xad

Created: 5/13/2013 2:08:40 PM
Modified: 5/13/2013 2:49:59 PM

Electrophoresis Assay Details

General Analysis Settings

Number of Available Sample and Ladder Wells (Max.) : 12
Minimum Visible Range [s] : 32
Maximum Visible Range [s] : 138
Start Analysis Time Range [s] : 33
End Analysis Time Range [s] : 137.5
Ladder Concentration [pg/μl] : 1950
Uses Standard Area for Ladder Fragments
Lower Marker Concentration [pg/μl] : 125
Upper Marker Concentration [pg/μl] : 75
Used Upper Marker for Quantitation
Standard Curve Fit is Point to Point
Show Data Aligned to Lower and Upper Marker

Integrator Settings

Integration Start Time [s] : 33.05
Integration End Time [s] : 137
Slope Threshold : 0.8
Height Threshold [FU] : 5
Area Threshold : 0.1
Width Threshold [s] : 0.6
Baseline Plateau [s] : 0.5

Filter Settings

Filter Width [s] : 0.5
Polynomial Order : 4

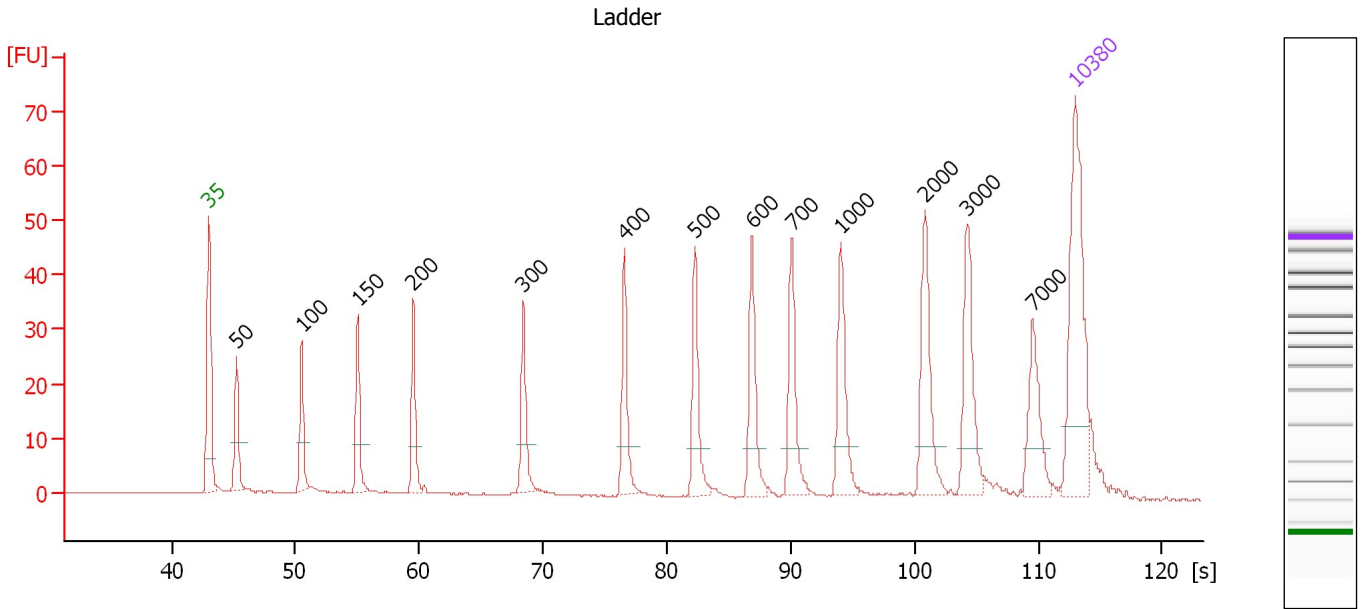
Ladder

Ladder Peak	Size	Area
1	35	160
2	50	210
3	100	208
4	150	221
5	200	242
6	300	270
7	400	305
8	500	306
9	600	336
10	700	321
11	1000	366
12	2000	413
13	3000	411
14	7000	400
15	10380	214

Assay Class: High Sensitivity DNA Assay
 Data Path: C:\...ents and Settings\Bioanalyzer\2013-05-13\2013-05-13_004.xad

Created: 5/13/2013 2:08:40 PM
 Modified: 5/13/2013 2:49:59 PM

Electropherogram Summary



Overall Results for Ladder

Noise: 0.2

Peak table for Ladder

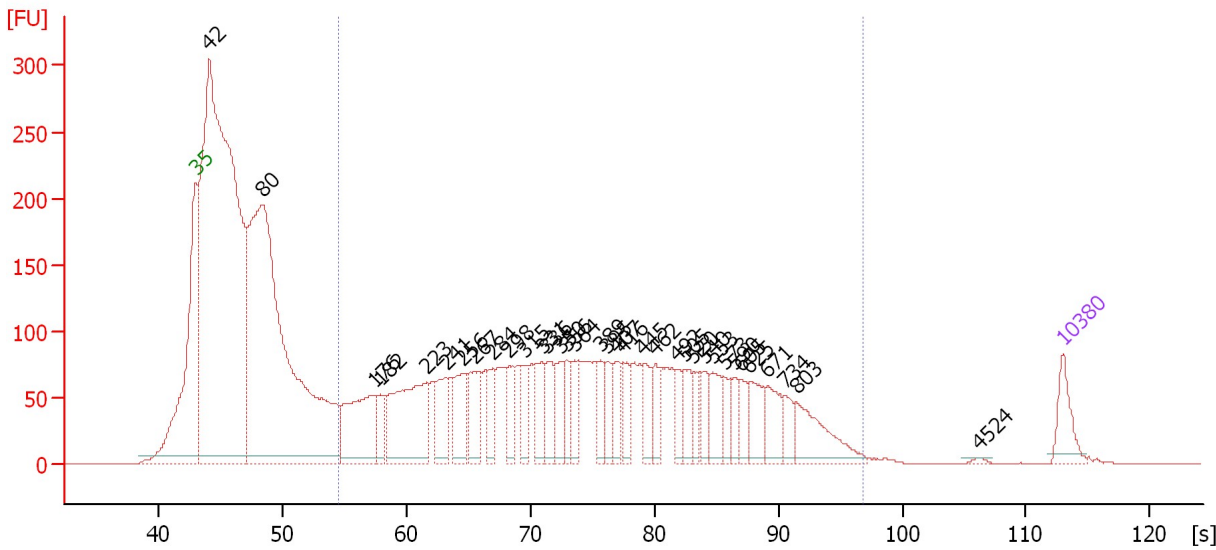
Peak	Size [bp]	Conc. [pg/μl]	Molarity [pmol/l]	Observations
1	35	125.00	5,411.3	Lower Marker
2	50	150.00	4,545.5	Ladder Peak
3	100	150.00	2,272.7	Ladder Peak
4	150	150.00	1,515.2	Ladder Peak
5	200	150.00	1,136.4	Ladder Peak
6	300	150.00	757.6	Ladder Peak
7	400	150.00	568.2	Ladder Peak
8	500	150.00	454.5	Ladder Peak
9	600	150.00	378.8	Ladder Peak
10	700	150.00	324.7	Ladder Peak
11	1,000	150.00	227.3	Ladder Peak
12	2,000	150.00	113.6	Ladder Peak
13	3,000	150.00	75.8	Ladder Peak
14	7,000	150.00	32.5	Ladder Peak
15	10,380	75.00	10.9	Upper Marker

Assay Class: High Sensitivity DNA Assay
 Data Path: C:\...ents and Settings\Bioanalyzer\2013-05-13\2013-05-13_004.xad

Created: 5/13/2013 2:08:40 PM
 Modified: 5/13/2013 2:49:59 PM

Electropherogram Summary Continued ...

1499 soni 1:2 (5+2) 5/13



Overall Results for sample 1 : 1499 soni 1:2 (5+2) 5/13

Number of peaks found: 35 Corr. Area 1: 3,757.6
 Noise: 0.2

Peak table for sample 1 : 1499 soni 1:2 (5+2) 5/13

Peak	Size [bp]	Conc. [pg/μl]	Molarity [pmol/l]	Observations
1	35	125.00	5,411.3	Lower Marker
2	42	4,199.90	150,768.0	
3	80	2,871.58	54,295.5	
4	176	410.34	3,535.3	
5	182	89.64	745.8	
6	223	486.02	3,298.0	
7	241	158.49	997.1	
8	256	167.68	992.6	
9	267	174.51	991.5	
10	284	92.77	494.5	
11	298	98.79	501.7	
12	315	102.57	493.8	
13	331	107.07	490.6	
14	336	112.90	509.2	
15	350	102.93	445.2	
16	356	78.59	334.8	
17	364	77.23	321.8	
18	389	72.58	283.0	
19	395	76.21	292.0	
20	407	85.81	319.2	
21	416	89.79	326.7	
22	445	90.96	309.4	
23	462	83.46	273.6	
24	492	60.36	185.9	
25	505	77.17	231.5	
26	520	56.54	164.7	

Assay Class: High Sensitivity DNA Assay
 Data Path: C:\...ents and Settings\Bioanalyzer\2013-05-13\2013-05-13_004.xad


Created: 5/13/2013 2:08:40 PM
 Modified: 5/13/2013 2:49:59 PM

Electropherogram Summary Continued ...

... Peak table for sample 1 : 1499 soni 1:2 (5+2) 5/13

Peak	Size [bp]	Conc. [pg/µl]	Molarity [pmol/l]	Observations
27	540	71.78	201.5	
28	553	100.70	276.0	
29	573	48.72	128.8	
30	590	50.98	130.9	
31	605	59.55	149.2	
32	625	104.27	252.8	
33	671	102.16	230.8	
34	734	54.53	112.6	
35	803	173.24	326.8	
36	4,524	5.27	1.8	
37	▶ 10,380	75.00	10.9	Upper Marker

Region table for sample 1 : 1499 soni 1:2 (5+2) 5/13

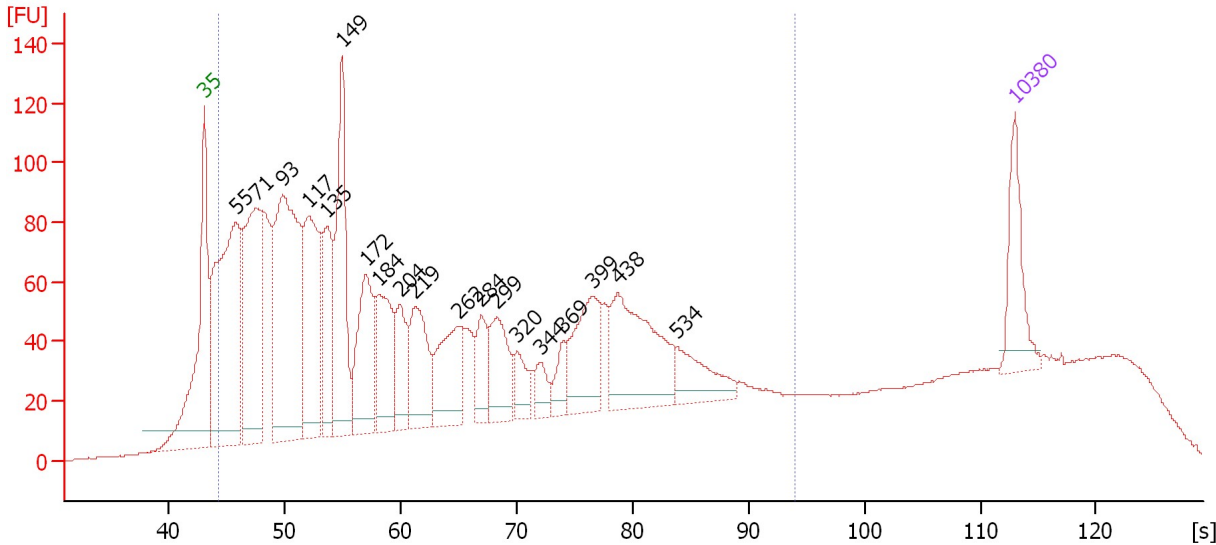
From [s]	To [s]	Average Size [bp]	Molarity [pmol/l]	Conc. [pg/µl]	Corr. Area % of Total	Size distribution in CV [%]	Color
54.53	96.85	416	23,823.2	4,783.31	3,757.6 49	48.1	

Assay Class: High Sensitivity DNA Assay
 Data Path: C:\...ents and Settings\Bioanalyzer\2013-05-13\2013-05-13_004.xad

Created: 5/13/2013 2:08:40 PM
 Modified: 5/13/2013 2:49:59 PM

Electropherogram Summary Continued ...

Gen-2098 soni 1:2 (5+1) 5/13



Overall Results for sample 2 : Gen-2098 soni 1:2 (5+1) 5/13

Number of peaks found: 19 Corr. Area 1: 3,933.0
 Noise: 0.2

Peak table for sample 2 : Gen-2098 soni 1:2 (5+1) 5/13

Peak	Size [bp]	Conc. [pg/μl]	Molarity [pmol/l]	Observations
1	35	125.00	5,411.3	Lower Marker
2	55	610.28	16,944.0	
3	71	430.27	9,193.3	
4	93	613.35	9,945.6	
5	117	333.43	4,335.7	
6	135	168.95	1,895.9	
7	149	310.44	3,159.1	
8	172	213.16	1,877.5	
9	184	173.30	1,424.3	
10	204	100.48	744.6	
11	219	150.80	1,045.5	
12	262	145.21	840.4	
13	284	67.24	359.1	
14	299	112.41	570.0	
15	320	45.19	213.7	
16	344	36.16	159.2	
17	369	35.09	144.2	
18	399	136.92	519.5	
19	438	224.70	776.8	
20	534	77.99	221.2	
21	10,380	75.00	10.9	Upper Marker

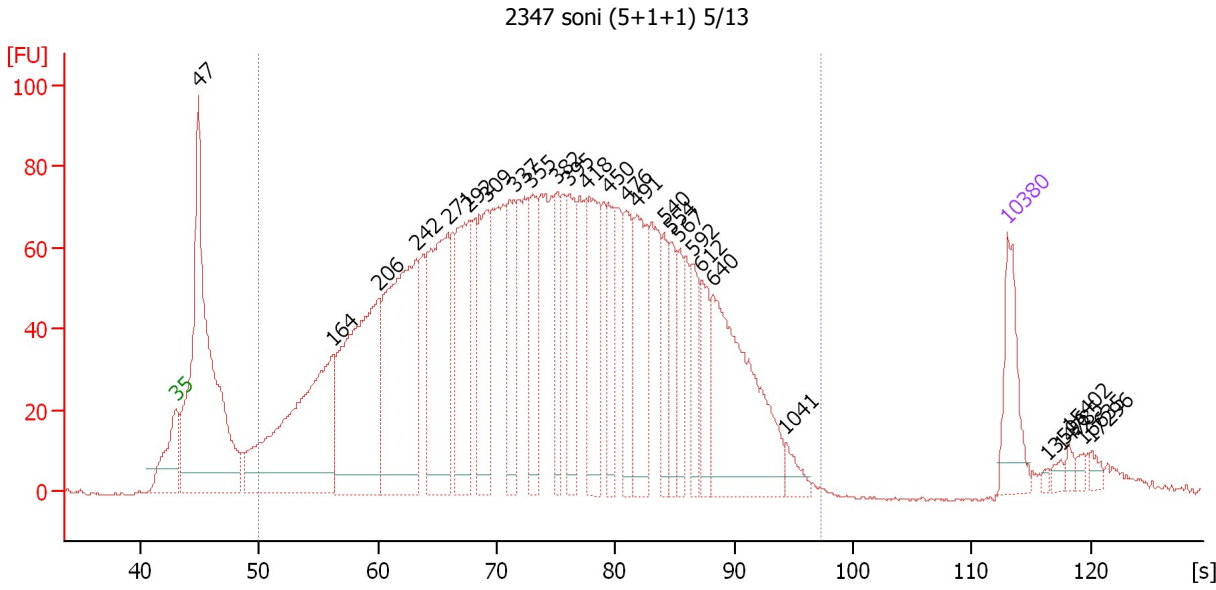
Region table for sample 2 : Gen-2098 soni 1:2 (5+1) 5/13

From [s]	To [s]	Average Size [bp]	Molarity [pmol/l]	Conc. [pg/μl]	Corr. Area % of Total	Size distribution in CV [%]	Color
44.17	94.05	271	63,115.6	5,193.66	3,933.0 84	72.2	Blue

Assay Class: High Sensitivity DNA Assay
 Data Path: C:\...ents and Settings\Bioanalyzer\2013-05-13\2013-05-13_004.xad

Created: 5/13/2013 2:08:40 PM
 Modified: 5/13/2013 2:49:59 PM

Electropherogram Summary Continued ...



Overall Results for sample 3 : 2347 soni (5+1+1) 5/13

Number of peaks found: 27 Corr. Area 1: 3,478.3
 Noise: 0.4

Peak table for sample 3 : 2347 soni (5+1+1) 5/13

Peak	Size [bp]	Conc. [pg/μl]	Molarity [pmol/l]	Observations
1	35	125.00	5,411.3	Lower Marker
2	47	804.52	25,754.1	
3	164	540.72	5,004.8	
4	206	491.26	3,606.3	
5	242	470.94	2,948.5	
6	271	331.31	1,848.9	
7	292	228.27	1,185.1	
8	309	168.71	827.6	
9	337	128.85	579.1	
10	355	132.58	566.0	
11	382	85.85	340.5	
12	395	107.76	413.5	
13	418	165.24	598.9	
14	450	99.71	335.8	
15	476	94.89	302.0	
16	491	156.19	481.7	
17	540	61.23	171.8	
18	554	62.82	171.9	
19	567	55.43	148.1	
20	592	64.95	166.3	
21	612	62.95	155.9	
22	640	307.65	728.3	
23	1,041	21.91	31.9	
24	10,380	75.00	10.9	Upper Marker
25	13,596	0.00	0.0	
26	14,785	0.00	0.0	


Assay Class: High Sensitivity DNA Assay
Data Path: C:\...ents and Settings\Bioanalyzer\2013-05-13\2013-05-13_004.xad

Created: 5/13/2013 2:08:40 PM
Modified: 5/13/2013 2:49:59 PM

Electropherogram Summary Continued ...**... Peak table for sample 3 : 2347 soni (5+1+1) 5/13**

Peak	Size [bp]	Conc. [pg/ μ l]	Molarity [pmol/l]	Observations
27	15,402	0.00	0.0	
28	16,635	0.00	0.0	
29	17,296	0.00	0.0	

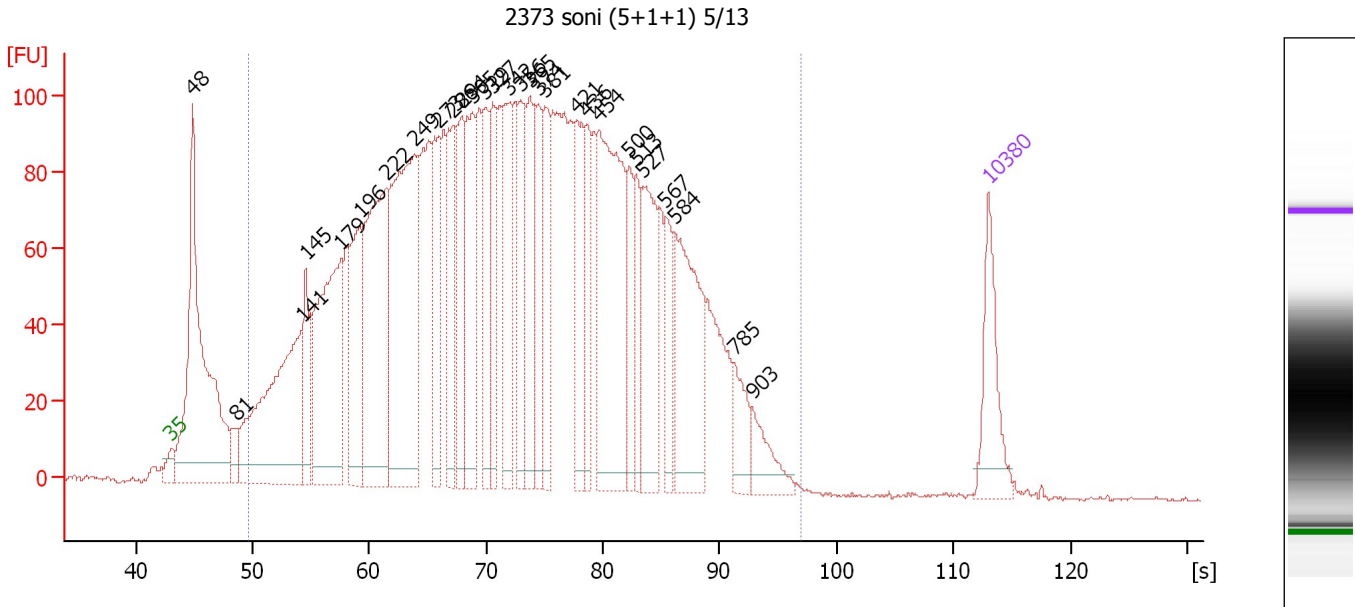
Region table for sample 3 : 2347 soni (5+1+1) 5/13

From [s]	To [s]	Average Size [bp]	Molarity [pmol/l]	Conc. [pg/ μ l]	Corr. Area % of Total	Size distribution in CV [%]	Color	
49.92	97.35	395	28,092.2	5,207.95	3,478.3	87	46.4	

Assay Class: High Sensitivity DNA Assay
 Data Path: C:\...ents and Settings\Bioanalyzer\2013-05-13\2013-05-13_004.xad

Created: 5/13/2013 2:08:40 PM
 Modified: 5/13/2013 2:49:59 PM

Electropherogram Summary Continued ...



Overall Results for sample 4 : 2373 soni (5+1+1) 5/13

Number of peaks found: 29 Corr. Area 1: 4,686.8
 Noise: 0.4

Peak table for sample 4 : 2373 soni (5+1+1) 5/13

Peak	Size [bp]	Conc. [pg/μl]	Molarity [pmol/l]	Observations
1	35	125.00	5,411.3	Lower Marker
2	48	603.37	19,232.5	
3	81	31.89	592.8	
4	141	453.90	4,872.5	
5	145	95.17	993.0	
6	179	377.38	3,197.1	
7	196	189.94	1,467.0	
8	222	386.84	2,640.7	
9	249	476.96	2,904.1	
10	273	152.60	848.1	
11	286	143.07	759.2	
12	294	143.16	736.9	
13	305	176.57	876.9	
14	319	121.83	579.3	
15	327	111.69	518.3	
16	342	141.75	627.4	
17	356	113.60	483.7	
18	365	142.88	592.5	
19	374	107.87	437.1	
20	381	120.03	477.1	
21	421	129.50	466.4	
22	436	86.61	300.9	
23	454	339.03	1,131.7	
24	500	78.24	237.1	
25	513	69.05	204.0	
26	527	153.82	442.4	

Assay Class: High Sensitivity DNA Assay
Data Path: C:\...ents and Settings\Bioanalyzer\2013-05-13\2013-05-13_004.xad


Created: 5/13/2013 2:08:40 PM
Modified: 5/13/2013 2:49:59 PM

Electropherogram Summary Continued ...

... Peak table for sample 4 : 2373 soni (5+1+1) 5/13

Peak	Size [bp]	Conc. [pg/µl]	Molarity [pmol/l]	Observations
27	567	63.55	169.7	
28	584	203.11	526.8	
29	785	52.75	101.9	
30	903	48.71	81.7	
31	10,380	75.00	10.9	Upper Marker

Region table for sample 4 : 2373 soni (5+1+1) 5/13

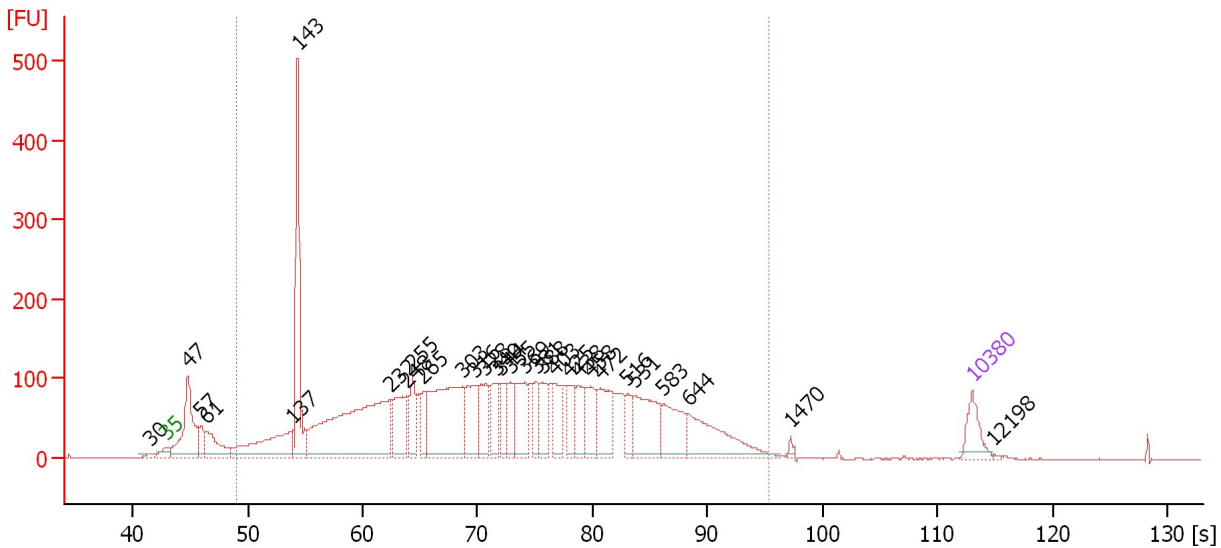
From [s]	To [s]	Average Size [bp]	Molarity [pmol/l]	Conc. [pg/µl]	Corr. Area % of Total	Size distribution in CV [%]	Color	
49.61	97.02	375	33,395.3	5,925.19	4,686.8	92	45.4	

Assay Class: High Sensitivity DNA Assay
 Data Path: C:\...ents and Settings\Bioanalyzer\2013-05-13\2013-05-13_004.xad

Created: 5/13/2013 2:08:40 PM
 Modified: 5/13/2013 2:49:59 PM

Electropherogram Summary Continued ...

2378 soni (7 cyc) 5/13



Overall Results for sample 5 : 2378 soni (7 cyc) 5/13

Number of peaks found: 30 Corr. Area 1: 4,742.8
 Noise: 0.3

Peak table for sample 5 : 2378 soni (7 cyc) 5/13

Peak	Size [bp]	Conc. [pg/μl]	Molarity [pmol/l]	Observations
1	30	0.00	0.0	
2	35	125.00	5,411.3	Lower Marker
3	47	399.59	12,853.0	
4	57	85.83	2,300.6	
5	61	172.26	4,249.9	
6	137	361.94	4,007.5	
7	143	570.95	6,047.4	
8	232	946.72	6,169.7	
9	248	212.44	1,296.6	
10	255	141.75	843.8	
11	265	106.45	609.7	
12	303	566.02	2,829.6	
13	316	183.05	877.0	
14	328	157.58	728.6	
15	340	139.02	620.0	
16	344	108.03	476.2	
17	355	105.31	450.0	
18	369	180.99	742.2	
19	381	92.23	366.3	
20	388	118.07	460.6	
21	403	112.61	423.4	
22	425	83.51	297.6	
23	438	112.83	390.7	
24	458	127.38	421.4	
25	472	179.36	575.7	
26	516	71.97	211.3	

Assay Class: High Sensitivity DNA Assay
 Data Path: C:\...ents and Settings\Bioanalyzer\2013-05-13\2013-05-13_004.xad

Created: 5/13/2013 2:08:40 PM
 Modified: 5/13/2013 2:49:59 PM

Electropherogram Summary Continued ...

... Peak table for sample 5 : 2378 soni (7 cyc) 5/13

Peak	Size [bp]	Conc. [pg/μl]	Molarity [pmol/l]	Observations
27	531	236.18	673.8	
28	583	170.41	442.6	
29	644	265.29	623.8	
30	1,470	10.59	10.9	
31	10,380	75.00	10.9	Upper Marker
32	12,198	0.00	0.0	

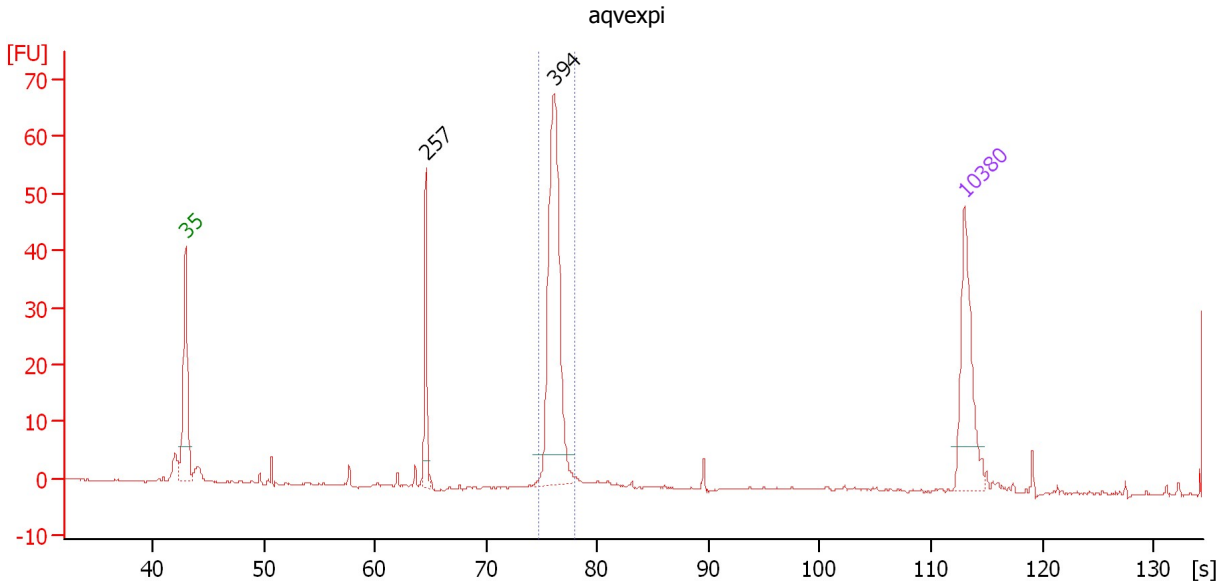
Region table for sample 5 : 2378 soni (7 cyc) 5/13

From [s]	To [s]	Average Size [bp]	Molarity [pmol/l]	Conc. [pg/μl]	Corr. Area % of Total	Size distribution in CV [%]	Color
49.07	95.38	370	35,370.0	5,939.06	4,742.8	91	47.0

Assay Class: High Sensitivity DNA Assay
 Data Path: C:\...ents and Settings\Bioanalyzer\2013-05-13\2013-05-13_004.xad

Created: 5/13/2013 2:08:40 PM
 Modified: 5/13/2013 2:49:59 PM

Electropherogram Summary Continued ...



Overall Results for sample 6 : aqvexpi

Number of peaks found: 2 Corr. Area 1: 108.6
 Noise: 0.2

Peak table for sample 6 : aqvexpi

Peak	Size [bp]	Conc. [pg/μl]	Molarity [pmol/l]	Observations
1	35	125.00	5,411.3	Lower Marker
2	257	57.63	339.9	
3	394	228.65	878.3	
4	10,380	75.00	10.9	Upper Marker

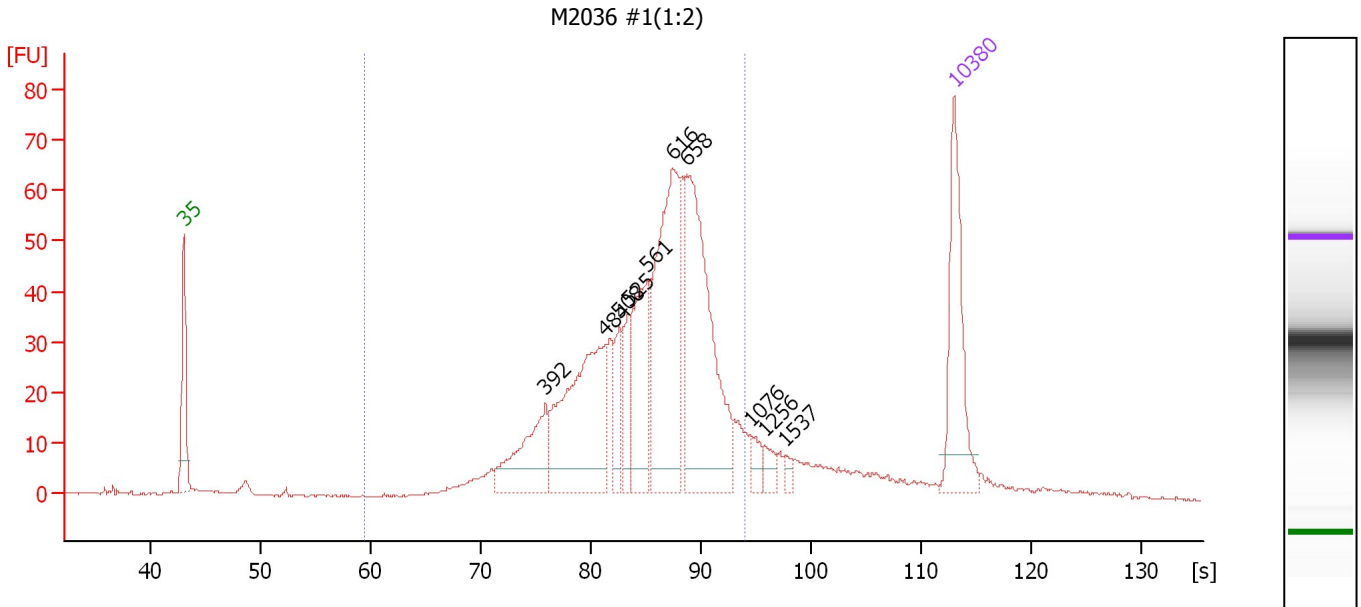
Region table for sample 6 : aqvexpi

From [s]	To [s]	Average Size [bp]	Molarity [pmol/l]	Conc. [pg/μl]	Corr. Area % of Total	Size distribution in CV [%]	Color
74.69	78.01	395	886.5	231.16	108.6 67	1.7	Blue

Assay Class: High Sensitivity DNA Assay
 Data Path: C:\...ents and Settings\Bioanalyzer\2013-05-13\2013-05-13_004.xad

Created: 5/13/2013 2:08:40 PM
 Modified: 5/13/2013 2:49:59 PM

Electropherogram Summary Continued ...



Overall Results for sample 7 : M2036 #1(1:2)

Number of peaks found: 10 Corr. Area 1: 844.0
 Noise: 0.2

Peak table for sample 7 : M2036 #1(1:2)

Peak	Size [bp]	Conc. [pg/μl]	Molarity [pmol/l]	Observations
1	35	125.00	5,411.3	Lower Marker
2	392	78.42	303.5	
3	484	174.93	547.6	
4	508	30.60	91.3	
5	525	32.25	93.1	
6	561	90.24	243.6	
7	616	188.21	463.3	
8	658	215.31	495.7	
9	1,076	12.18	17.1	
10	1,256	10.91	13.2	
11	1,537	5.30	5.2	
12	10,380	75.00	10.9	Upper Marker

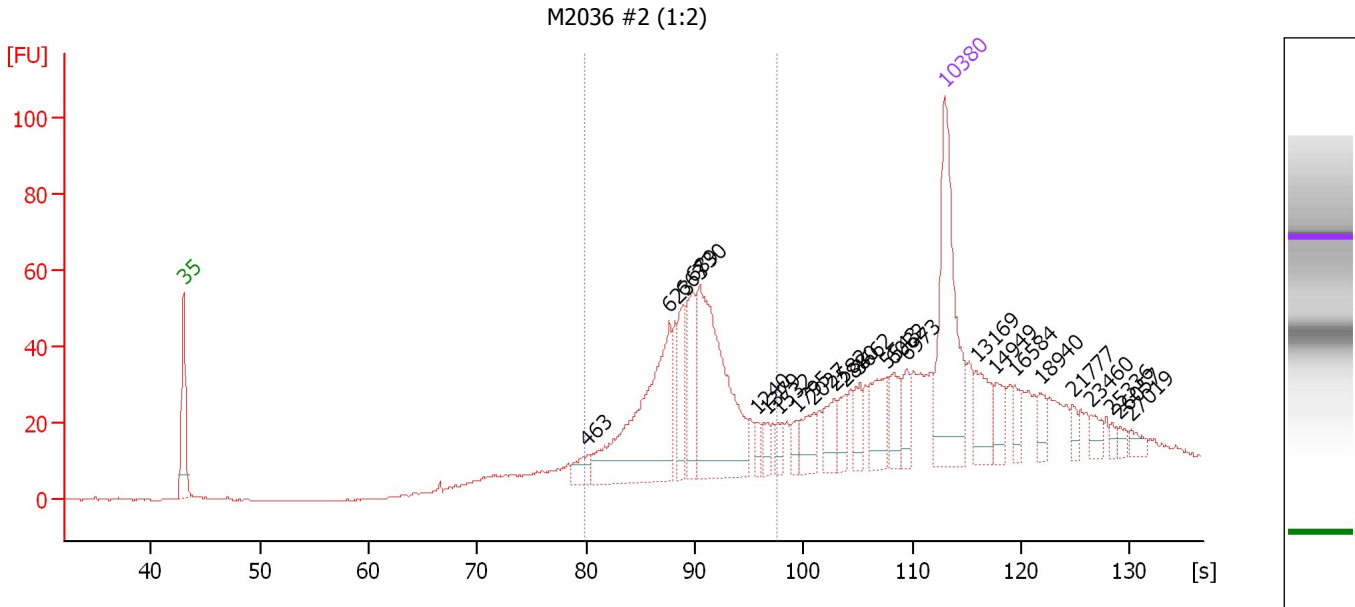
Region table for sample 7 : M2036 #1(1:2)

From [s]	To [s]	Average Size [bp]	Molarity [pmol/l]	Conc. [pg/μl]	Corr. Area % of Total	Size distribution in CV [%]	Color
59.52	94.05	576	2,714.7	950.82	844.0 86	23.7	Blue

Assay Class: High Sensitivity DNA Assay
 Data Path: C:\...ents and Settings\Bioanalyzer\2013-05-13\2013-05-13_004.xad

Created: 5/13/2013 2:08:40 PM
 Modified: 5/13/2013 2:49:59 PM

Electropherogram Summary Continued ...



Overall Results for sample 8 : M2036 #2 (1:2)

Number of peaks found: 25 Corr. Area 1: 471.8
 Noise: 0.2

Peak table for sample 8 : M2036 #2 (1:2)

Peak	Size [bp]	Conc. [pg/μl]	Molarity [pmol/l]	Observations
1	35	125.00	5,411.3	Lower Marker
2	463	11.57	37.9	
3	623	114.88	279.4	
4	663	29.73	67.9	
5	689	34.52	75.9	
6	730	120.86	251.0	
7	1,240	5.83	7.1	
8	1,379	6.39	7.0	
9	1,532	5.71	5.6	
10	1,795	5.92	5.0	
11	2,027	13.26	9.9	
12	2,582	13.63	8.0	
13	2,880	9.04	4.8	
14	3,662	10.02	4.1	
15	5,543	22.44	6.1	
16	6,032	14.33	3.6	
17	6,973	11.90	2.6	
18	10,380	75.00	10.9	Upper Marker
19	13,169	0.00	0.0	
20	14,949	0.00	0.0	
21	16,584	0.00	0.0	
22	18,940	0.00	0.0	
23	21,777	0.00	0.0	
24	23,460	0.00	0.0	
25	25,336	0.00	0.0	
26	26,057	0.00	0.0	


Assay Class: High Sensitivity DNA Assay
Data Path: C:\...ents and Settings\Bioanalyzer\2013-05-13\2013-05-13_004.xad

Created: 5/13/2013 2:08:40 PM
Modified: 5/13/2013 2:49:59 PM

Electropherogram Summary Continued ...**... Peak table for sample 8 : M2036 #2 (1:2)**

Peak	Size [bp]	Conc. [pg/μl]	Molarity [pmol/l]	Observations
27	27,019	0.00	0.0	

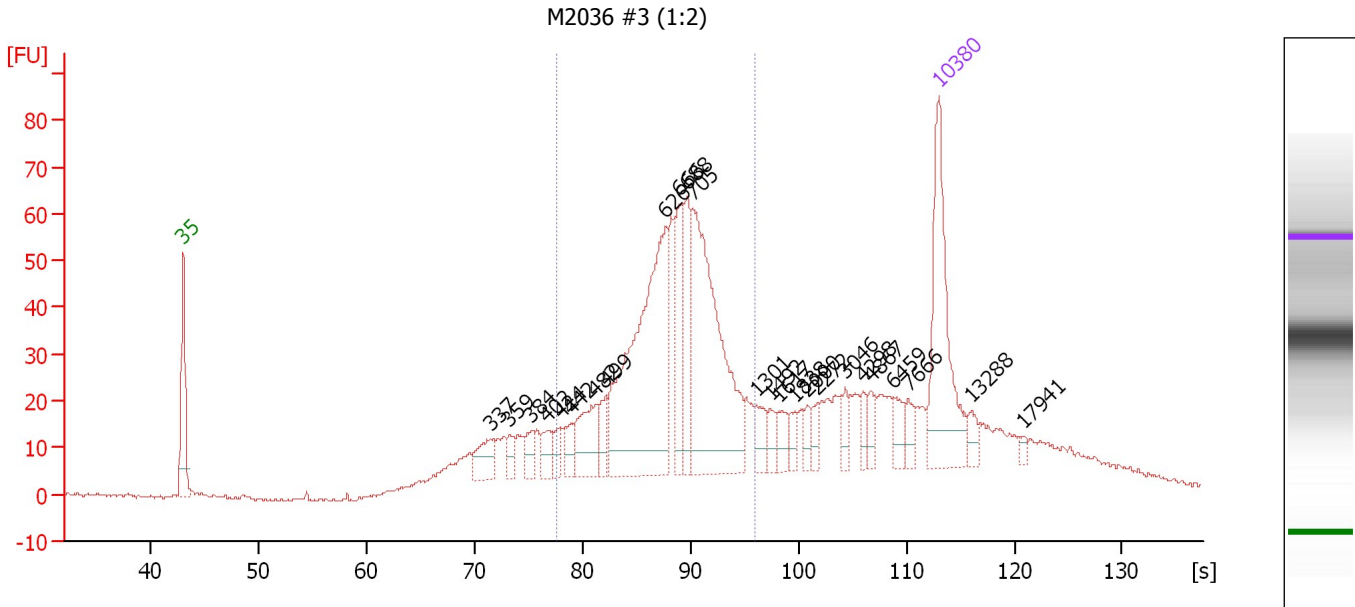
Region table for sample 8 : M2036 #2 (1:2)

From [s]	To [s]	Average Size [bp]	Molarity [pmol/l]	Conc. [pg/μl]	Corr. Area % of Total	Size distribution in CV [%]	Color	
79.88	97.52	749	722.2	329.26	471.8	47	29.1	

Assay Class: High Sensitivity DNA Assay
 Data Path: C:\...ents and Settings\Bioanalyzer\2013-05-13\2013-05-13_004.xad

Created: 5/13/2013 2:08:40 PM
 Modified: 5/13/2013 2:49:59 PM

Electropherogram Summary Continued ...



Overall Results for sample 9 : M2036 #3 (1:2)

Number of peaks found: 25 Corr. Area 1: 687.9
 Noise: 0.3

Peak table for sample 9 : M2036 #3 (1:2)

Peak	Size [bp]	Conc. [pg/μl]	Molarity [pmol/l]	Observations
1	35	125.00	5,411.3	Lower Marker
2	337	21.71	97.5	
3	359	8.68	36.6	
4	384	10.75	42.4	
5	402	12.88	48.6	
6	424	8.93	31.9	
7	442	12.75	43.7	
8	482	36.44	114.6	
9	499	15.13	45.9	
10	626	186.97	452.5	
11	666	42.51	96.7	
12	688	43.65	96.1	
13	705	169.57	364.5	
14	1,301	12.67	14.8	
15	1,492	8.54	8.7	
16	1,617	10.03	9.4	
17	1,838	6.78	5.6	
18	2,000	6.20	4.7	
19	2,272	6.32	4.2	
20	3,046	7.22	3.6	
21	4,298	7.12	2.5	
22	4,867	8.18	2.5	
23	6,459	11.27	2.6	
24	7,666	8.18	1.6	
25	10,380	75.00	10.9	Upper Marker
26	13,288	0.00	0.0	


Assay Class: High Sensitivity DNA Assay
Data Path: C:\...ents and Settings\Bioanalyzer\2013-05-13\2013-05-13_004.xad

Created: 5/13/2013 2:08:40 PM
Modified: 5/13/2013 2:49:59 PM

Electropherogram Summary Continued ...**... Peak table for sample 9 : M2036 #3 (1:2)**

Peak	Size [bp]	Conc. [pg/μl]	Molarity [pmol/l]	Observations
27	17,941	0.00	0.0	

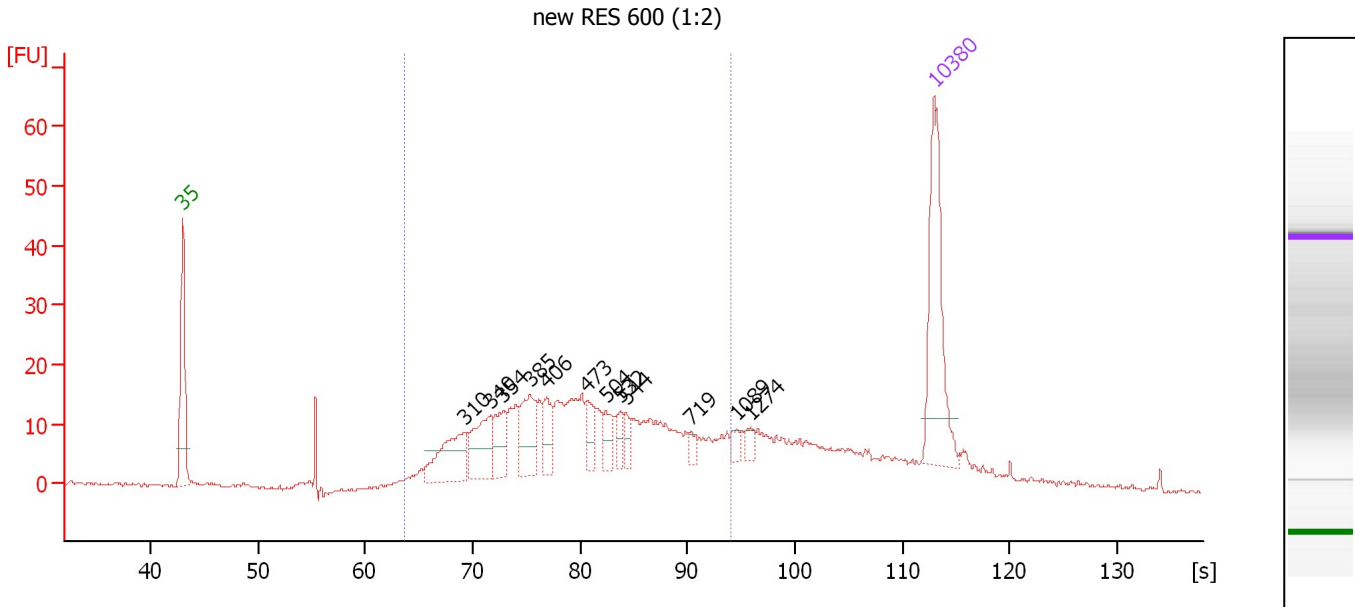
Region table for sample 9 : M2036 #3 (1:2)

From [s]	To [s]	Average Size [bp]	Molarity [pmol/l]	Conc. [pg/μl]	Corr. Area % of Total	Size distribution in CV [%]	Color	
77.71	95.90	681	1,460.2	610.82	687.9	56	25.3	

Assay Class: High Sensitivity DNA Assay
 Data Path: C:\...ents and Settings\Bioanalyzer\2013-05-13\2013-05-13_004.xad

Created: 5/13/2013 2:08:40 PM
 Modified: 5/13/2013 2:49:59 PM

Electropherogram Summary Continued ...



Overall Results for sample 10 : new RES 600 (1:2)

Number of peaks found: 12 Corr. Area 1: 408.4
 Noise: 0.2

Peak table for sample 10 : new RES 600 (1:2)

Peak	Size [bp]	Conc. [pg/μl]	Molarity [pmol/l]	Observations
1	35	125.00	5,411.3	Lower Marker
2	310	54.47	266.5	
3	340	44.34	197.8	
4	354	26.97	115.3	
5	385	39.75	156.4	
6	406	21.86	81.6	
7	473	18.22	58.4	
8	504	14.77	44.4	
9	532	10.12	28.8	
10	544	10.28	28.6	
11	719	5.40	11.4	
12	1,089	5.77	8.0	
13	1,274	5.72	6.8	
14	10,380	75.00	10.9	Upper Marker

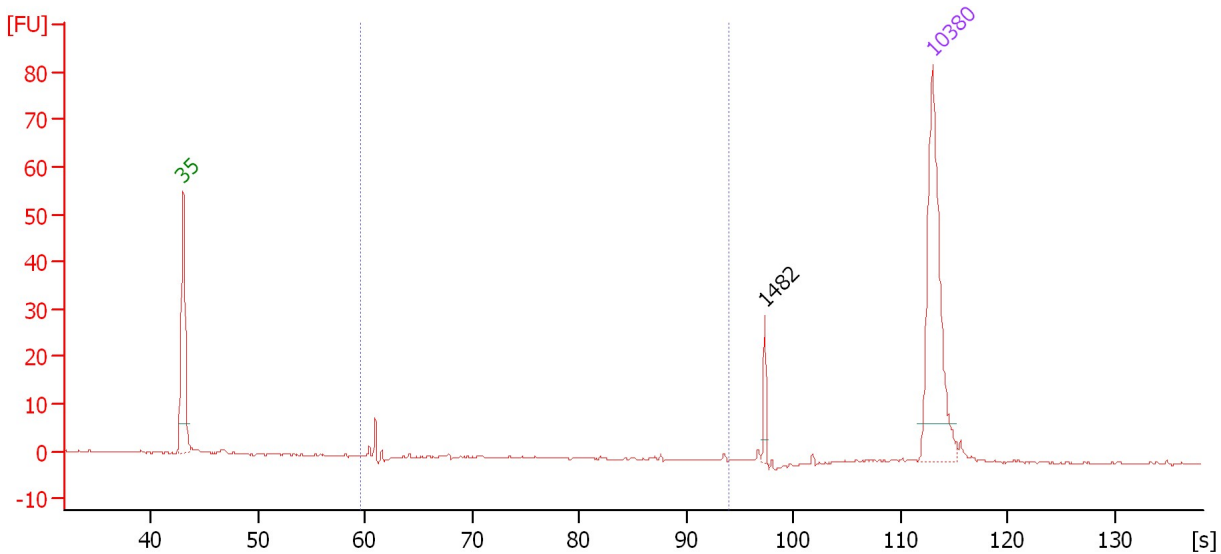
Region table for sample 10 : new RES 600 (1:2)

From [s]	To [s]	Average Size [bp]	Molarity [pmol/l]	Conc. [pg/μl]	Corr. Area % of Total	Size distribution in CV [%]	Color
63.74	94.05	489	2,113.3	594.14	408.4 70	33.6	Blue

Assay Class: High Sensitivity DNA Assay
 Data Path: C:\...ents and Settings\Bioanalyzer\2013-05-13\2013-05-13_004.xad

Created: 5/13/2013 2:08:40 PM
 Modified: 5/13/2013 2:49:59 PM

Electropherogram Summary Continued ...



Overall Results for sample 11 :

Number of peaks found: 1 Corr. Area 1: 4.2
 Noise: 0.2

Peak table for sample 11 :

Peak	Size [bp]	Conc. [pg/μl]	Molarity [pmol/l]	Observations
1	35	125.00	5,411.3	Lower Marker
2	1,482	8.40	8.6	
3	10,380	75.00	10.9	Upper Marker

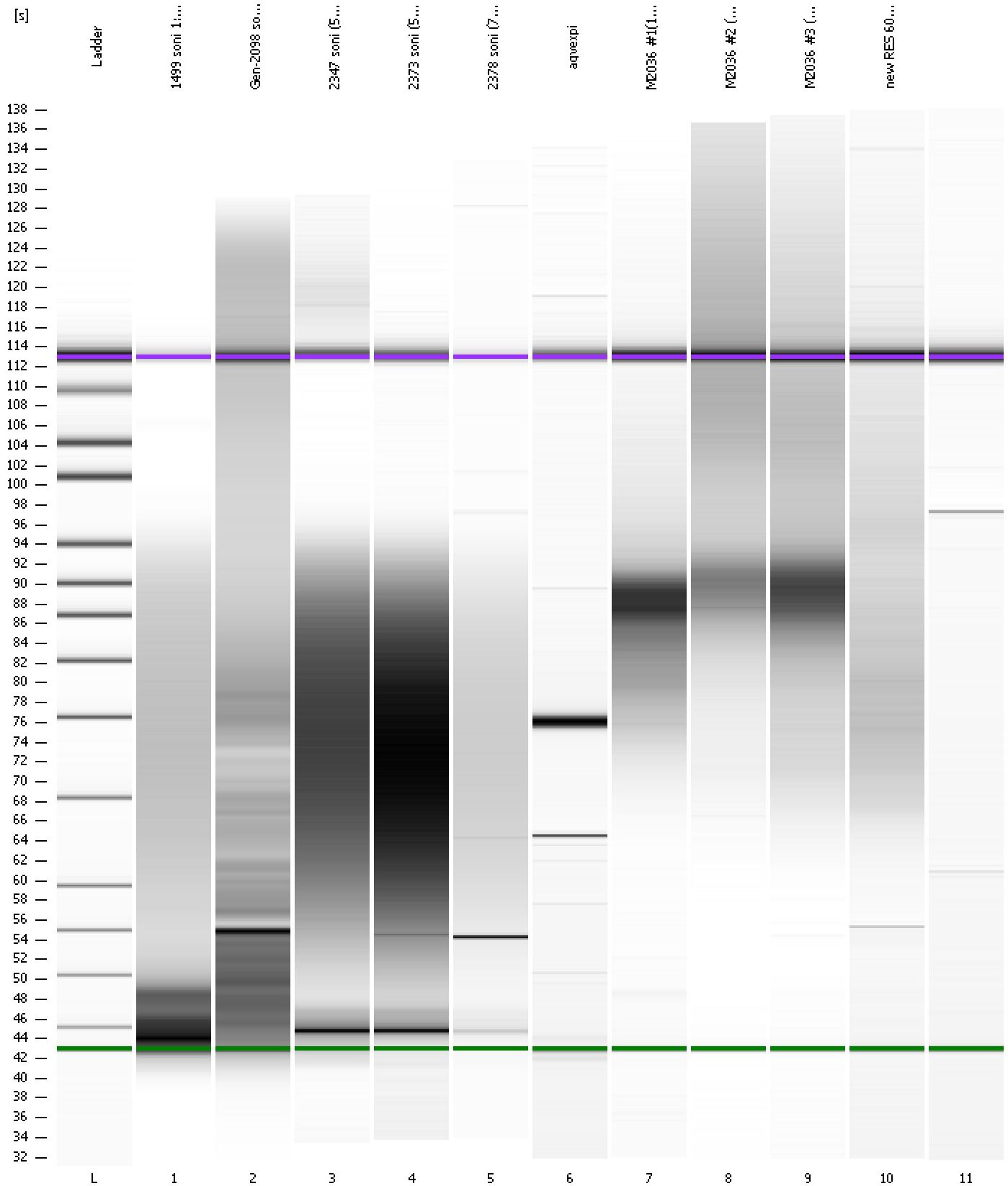
Region table for sample 11 :

From [s]	To [s]	Average Size [bp]	Molarity [pmol/l]	Conc. [pg/μl]	Corr. Area % of Total	Size distribution in CV [%]	Color
59.52	94.05	310	35.6	5.48	4.2	19	70.9

Assay Class: High Sensitivity DNA Assay
Data Path: C:\...ents and Settings\Bioanalyzer\2013-05-13\2013-05-13_004.xad

Created: 5/13/2013 2:08:40 PM
Modified: 5/13/2013 2:49:59 PM

Gel Image



Assay Class: High Sensitivity DNA Assay
 Data Path: C:\...ents and Settings\Bioanalyzer\2013-05-13\2013-05-13_004.xad

Created: 5/13/2013 2:08:40 PM
 Modified: 5/13/2013 2:49:59 PM

Run Logbook

Description	Number	Source	Category	Sub Category	Time	Time Zone	User	Host
Run ended on port 1 (Number of wells acquired: 12)		Instrument	Run		5/13/2013 2:49:54 PM	(GMT --07:00) Pacific Standard Time	UC Davis	D8XSMGH1
Run started on port 1 (File: C:\Documents and Settings\Bioanalyzer\2013-05-13\2013-05-13_004.xad)		Instrument	Run		5/13/2013 2:08:41 PM	(GMT --07:00) Pacific Standard Time	UC Davis	D8XSMGH1
Product Number : G2938B		Instrument	Run		5/13/2013 2:08:41 PM	(GMT --07:00) Pacific Standard Time	UC Davis	D8XSMGH1
Name :		Instrument	Run		5/13/2013 2:08:41 PM	(GMT --07:00) Pacific Standard Time	UC Davis	D8XSMGH1
Vendor : Agilent Technologies		Instrument	Run		5/13/2013 2:08:41 PM	(GMT --07:00) Pacific Standard Time	UC Davis	D8XSMGH1
Serial# : DE13701086		Instrument	Run		5/13/2013 2:08:41 PM	(GMT --07:00) Pacific Standard Time	UC Davis	D8XSMGH1
Firmware : C.01.069		Instrument	Run		5/13/2013 2:08:41 PM	(GMT --07:00) Pacific Standard Time	UC Davis	D8XSMGH1
Cartridge : Electrode		Instrument	Run		5/13/2013 2:08:41 PM	(GMT --07:00) Pacific Standard Time	UC Davis	D8XSMGH1