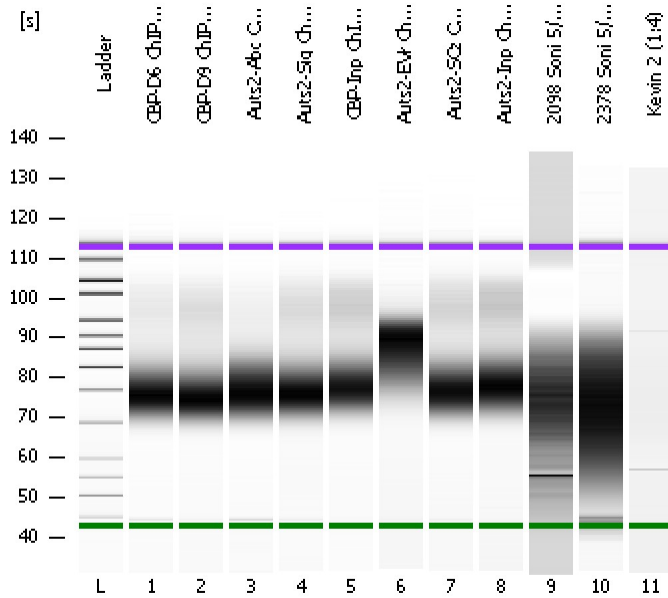


Assay Class: High Sensitivity DNA Assay
Data Path: C:\...ents and Settings\Bioanalyzer\2013-05-14\2013-05-14_001.xad

Created: 5/14/2013 9:38:16 AM
Modified: 5/14/2013 10:19:41 AM

Electrophoresis File Run Summary



Instrument Information:

Instrument Name: DE13701086 Firmware: C.01.069
Serial#: DE13701086 Type: G2938B

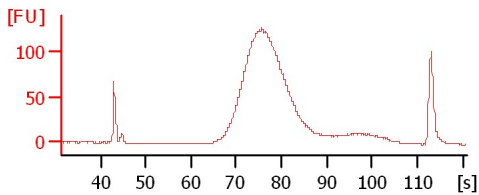
Assay Information:

Assay Origin Path: C:\Program Files\Agilent\2100 bioanalyzer\2100 expert\assays\dsDNA\High Sensitivity DNA.xsy
Assay Class: High Sensitivity DNA Assay
Version: 1.03
Assay Comments: Copyright © 2003-2010 Agilent Technologies

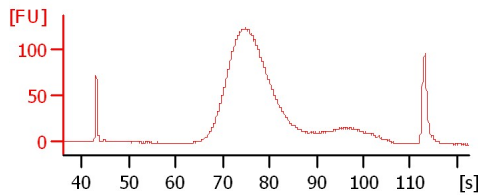
Chip Information:

Chip Lot #:
Reagent Kit Lot #:
Chip Comments:

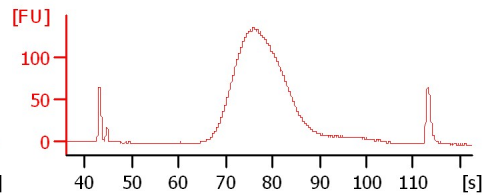
CBP-D6 ChIP-Seq Lib 1:2



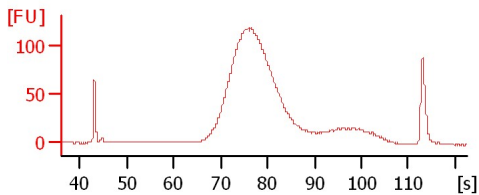
CBP-D9 ChIP-Seq Lib 1:5



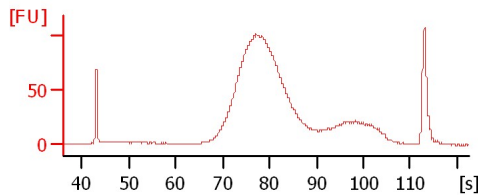
Aut2-Abc ChIP-Seq Lib



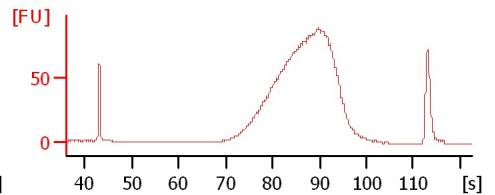
Aut2-Sig ChIP-Seq Lib 1:3



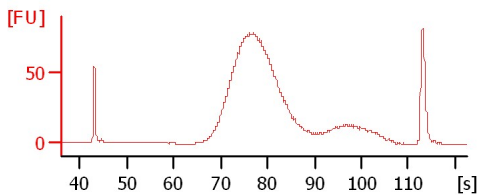
CBP-Inp ChIP-Seq Lib 1:11



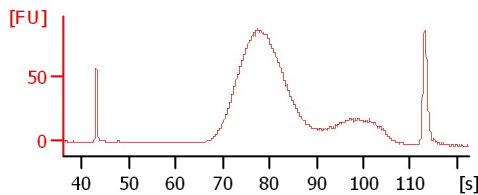
Aut2-EVr ChIP-Seq Lib 1:25



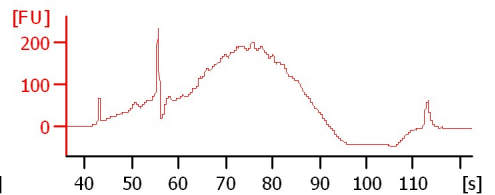
Aut2-SCz ChIP-Seq Lib 1:6



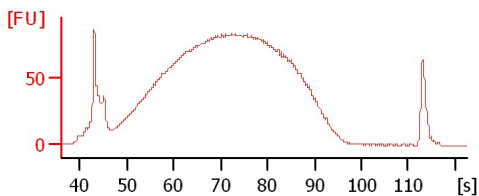
Aut2-Inp ChIP-Seq Lib 1:12



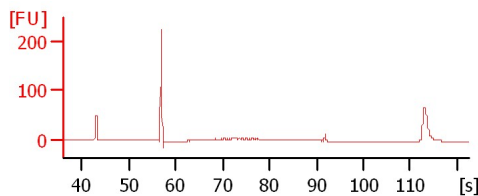
2098 Soni 5/13/13



2378 Soni 5/13/13



Kevin 2 (1:4)



Assay Class: High Sensitivity DNA Assay
Data Path: C:\...ents and Settings\Bioanalyzer\2013-05-14\2013-05-14_001.xad

Created: 5/14/2013 9:38:16 AM
Modified: 5/14/2013 10:19:41 AM

Electrophoresis File Run Summary (Chip Summary)

Sample Name	Sample Comment	Rest. Digest	Status	Observation	Result Label	Result Color
CBP-D6 ChIP-Seq Lib 1:2		<input type="checkbox"/>	✓			
CBP-D9 ChIP-Seq Lib 1:5		<input type="checkbox"/>	✓			
Auts2-Abc ChIP-Seq Lib		<input type="checkbox"/>	✓			
Auts2-Sig ChIP-Seq Lib 1:3		<input type="checkbox"/>	✓			
CBP-Inp ChIP-Seq Lib 1:11		<input type="checkbox"/>	✓			
Auts2-EVr ChIP-Seq Lib 1:25		<input type="checkbox"/>	✓			
Auts2-SCz ChIP-Seq Lib 1:6		<input type="checkbox"/>	✓			
Auts2-Inp ChIP-Seq Lib 1:12		<input type="checkbox"/>	✓			
2098 Soni 5/13/13		<input type="checkbox"/>	✓			
2378 Soni 5/13/13		<input type="checkbox"/>	✓			
Kevin 2 (1:4)		<input type="checkbox"/>	✓			
Ladder		<input type="checkbox"/>	✓			

Chip Lot #

Reagent Kit Lot #

Chip Comments :

Assay Class: High Sensitivity DNA Assay
Data Path: C:\...ents and Settings\Bioanalyzer\2013-05-14\2013-05-14_001.xad

Created: 5/14/2013 9:38:16 AM
Modified: 5/14/2013 10:19:41 AM

Electrophoresis Assay Details

General Analysis Settings

Number of Available Sample and Ladder Wells (Max.) : 12
Minimum Visible Range [s] : 32
Maximum Visible Range [s] : 138
Start Analysis Time Range [s] : 33
End Analysis Time Range [s] : 137.5
Ladder Concentration [pg/μl] : 1950
Uses Standard Area for Ladder Fragments
Lower Marker Concentration [pg/μl] : 125
Upper Marker Concentration [pg/μl] : 75
Used Upper Marker for Quantitation
Standard Curve Fit is Point to Point
Show Data Aligned to Lower and Upper Marker

Integrator Settings

Integration Start Time [s] : 33.05
Integration End Time [s] : 137
Slope Threshold : 0.8
Height Threshold [FU] : 5
Area Threshold : 0.1
Width Threshold [s] : 0.6
Baseline Plateau [s] : 0.5

Filter Settings

Filter Width [s] : 0.5
Polynomial Order : 4

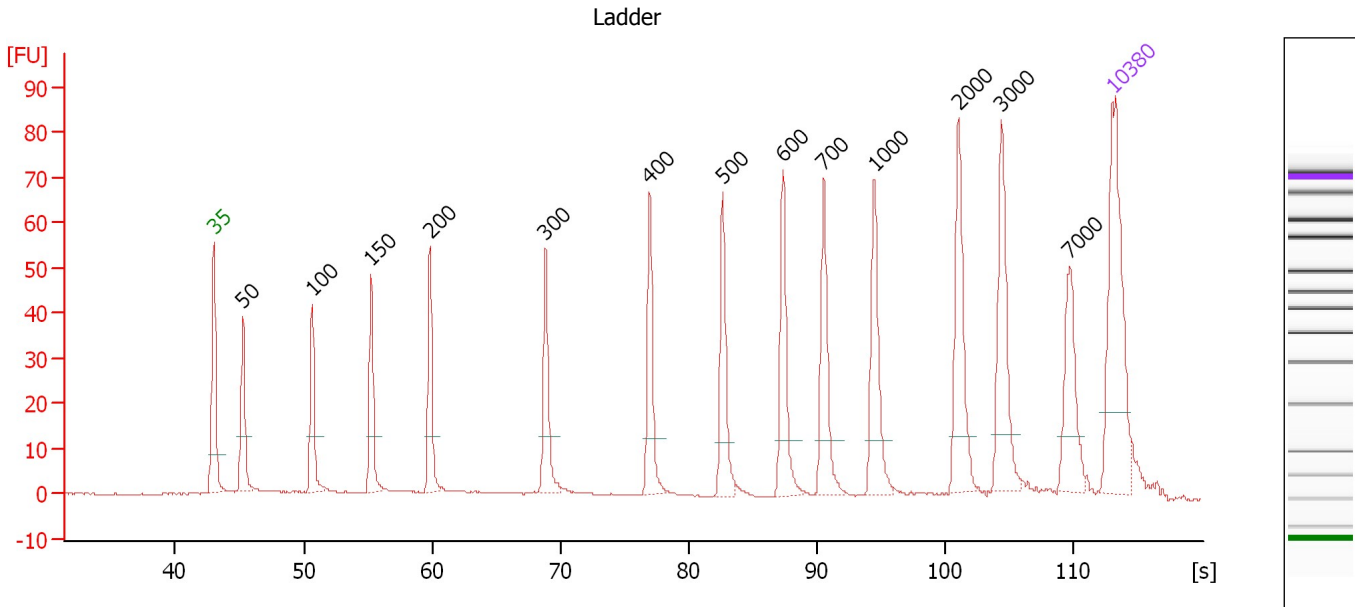
Ladder

Ladder Peak	Size	Area
1	35	160
2	50	210
3	100	208
4	150	221
5	200	242
6	300	270
7	400	305
8	500	306
9	600	336
10	700	321
11	1000	366
12	2000	413
13	3000	411
14	7000	400
15	10380	214

Assay Class: High Sensitivity DNA Assay
 Data Path: C:\...ents and Settings\Bioanalyzer\2013-05-14\2013-05-14_001.xad

Created: 5/14/2013 9:38:16 AM
 Modified: 5/14/2013 10:19:41 AM

Electropherogram Summary



Overall Results for Ladder

Noise: 0.1

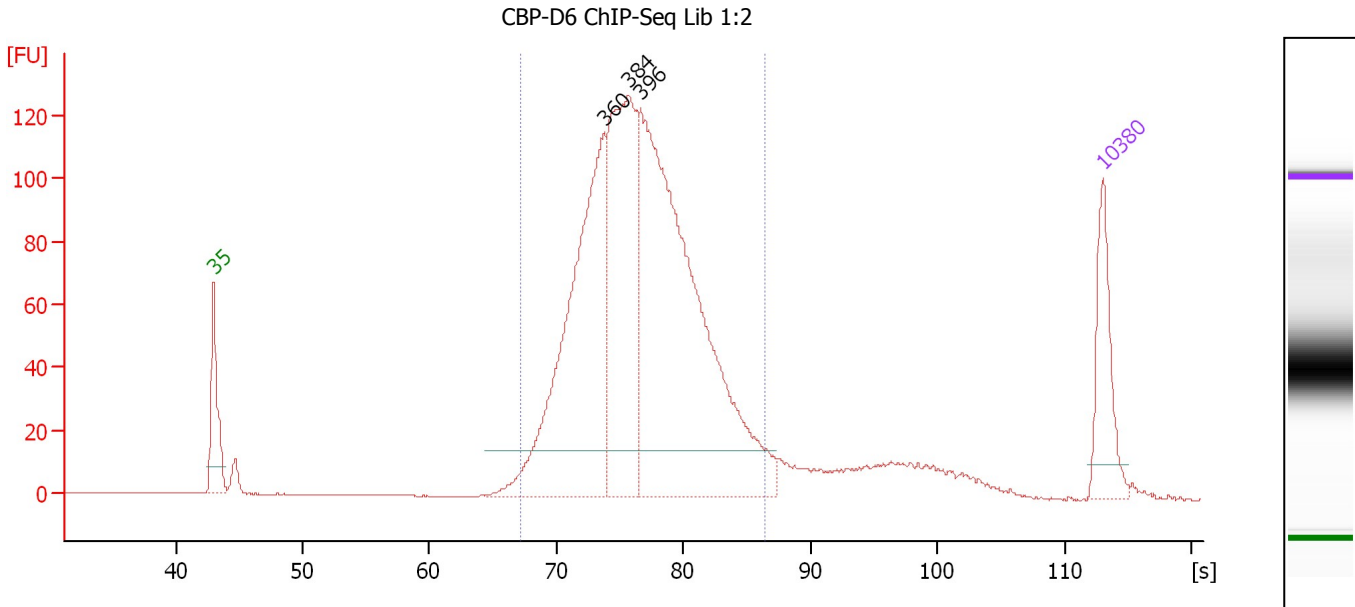
Peak table for Ladder

Peak	Size [bp]	Conc. [pg/μl]	Molarity [pmol/l]	Observations
1	35	125.00	5,411.3	Lower Marker
2	50	150.00	4,545.5	Ladder Peak
3	100	150.00	2,272.7	Ladder Peak
4	150	150.00	1,515.2	Ladder Peak
5	200	150.00	1,136.4	Ladder Peak
6	300	150.00	757.6	Ladder Peak
7	400	150.00	568.2	Ladder Peak
8	500	150.00	454.5	Ladder Peak
9	600	150.00	378.8	Ladder Peak
10	700	150.00	324.7	Ladder Peak
11	1,000	150.00	227.3	Ladder Peak
12	2,000	150.00	113.6	Ladder Peak
13	3,000	150.00	75.8	Ladder Peak
14	7,000	150.00	32.5	Ladder Peak
15	10,380	75.00	10.9	Upper Marker

Assay Class: High Sensitivity DNA Assay
 Data Path: C:\...ents and Settings\Bioanalyzer\2013-05-14\2013-05-14_001.xad

Created: 5/14/2013 9:38:16 AM
 Modified: 5/14/2013 10:19:41 AM

Electropherogram Summary Continued ...



Setpoint Deviations for sample 1 : CBP-D6 ChIP-Seq Lib 1:2

Height Threshold [FU] : 15

Overall Results for sample 1 : CBP-D6 ChIP-Seq Lib 1:2

Number of peaks found: 3 Corr. Area 1: 1,835.1
 Noise: 0.1

Peak table for sample 1 : CBP-D6 ChIP-Seq Lib 1:2

Peak	Size [bp]	Conc. [pg/µl]	Molarity [pmol/l]	Observations
1	35	125.00	5,411.3	Lower Marker
2	360	525.91	2,210.4	
3	384	400.88	1,582.0	
4	396	806.80	3,087.4	
5	10,380	75.00	10.9	Upper Marker

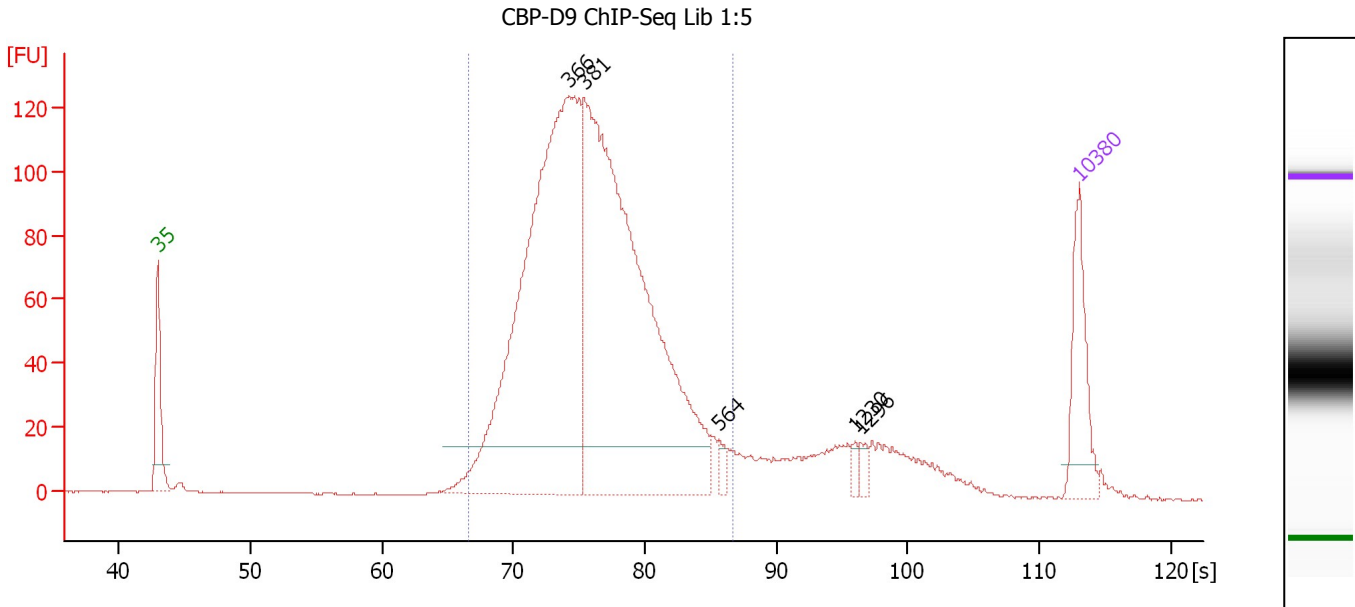
Region table for sample 1 : CBP-D6 ChIP-Seq Lib 1:2

From [s]	To [s]	Average Size [bp]	Molarity [pmol/l]	Conc. [pg/µl]	Corr. Area % of Total	Size distribution in CV [%]	Color
67.20	86.40	401	6,579.0	1,695.70	1,835.1 89	15.2	Blue

Assay Class: High Sensitivity DNA Assay
 Data Path: C:\...ents and Settings\Bioanalyzer\2013-05-14\2013-05-14_001.xad

Created: 5/14/2013 9:38:16 AM
 Modified: 5/14/2013 10:19:41 AM

Electropherogram Summary Continued ...



Setpoint Deviations for sample 2 : CBP-D9 ChIP-Seq Lib 1:5

Height Threshold [FU] : 15

Overall Results for sample 2 : CBP-D9 ChIP-Seq Lib 1:5

Number of peaks found: 5 Corr. Area 1: 1,811.4
 Noise: 0.2

Peak table for sample 2 : CBP-D9 ChIP-Seq Lib 1:5

Peak	Size [bp]	Conc. [pg/μl]	Molarity [pmol/l]	Observations
1	35	125.00	5,411.3	Lower Marker
2	366	921.29	3,811.9	
3	381	952.97	3,793.7	
4	564	13.59	36.5	
5	1,230	8.29	10.2	
6	1,296	11.10	13.0	
7	10,380	75.00	10.9	Upper Marker

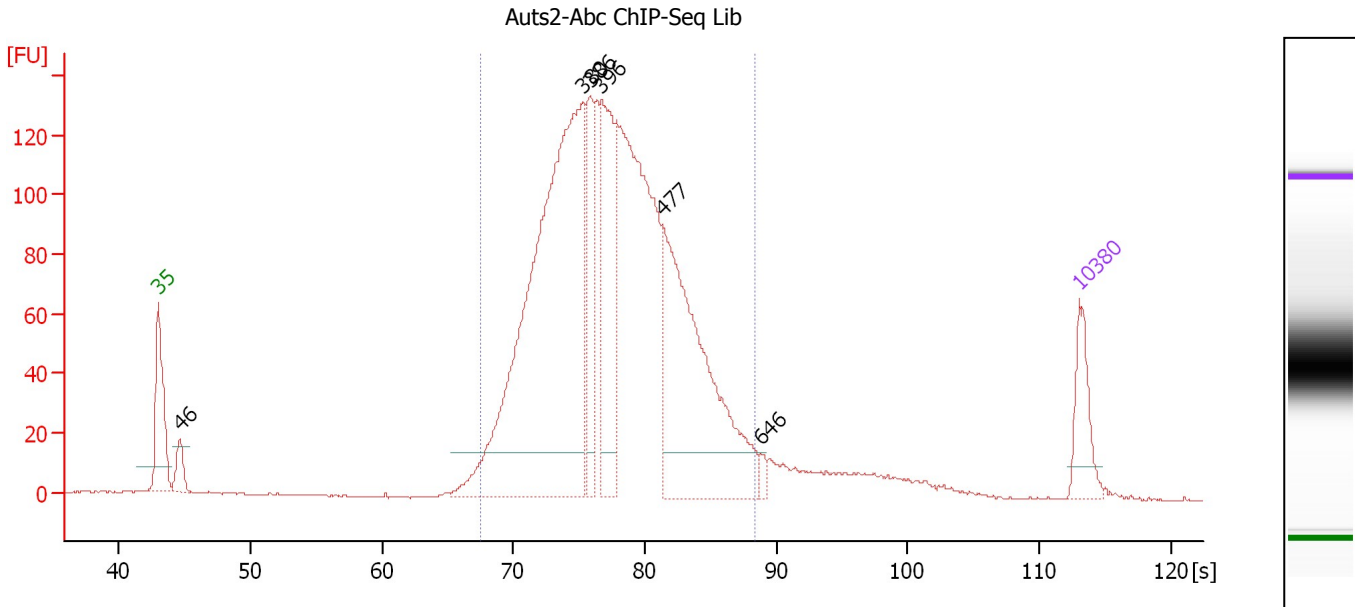
Region table for sample 2 : CBP-D9 ChIP-Seq Lib 1:5

From [s]	To [s]	Average Size [bp]	Molarity [pmol/l]	Conc. [pg/μl]	Corr. Area % of Total	Size distribution in CV [%]	Color
66.57	86.61	393	7,525.2	1,895.70	1,811.4 86	15.7	Blue

Assay Class: High Sensitivity DNA Assay
 Data Path: C:\...ents and Settings\Bioanalyzer\2013-05-14\2013-05-14_001.xad

Created: 5/14/2013 9:38:16 AM
 Modified: 5/14/2013 10:19:41 AM

Electropherogram Summary Continued ...



Setpoint Deviations for sample 3 : Auts2-Abc ChIP-Seq Lib

Height Threshold [FU] : 15

Overall Results for sample 3 : Auts2-Abc ChIP-Seq Lib

Number of peaks found: 6 Corr. Area 1: 2,210.2
 Noise: 0.1

Peak table for sample 3 : Auts2-Abc ChIP-Seq Lib

Peak	Size [bp]	Conc. [pg/μl]	Molarity [pmol/l]	Observations
1	35	125.00	5,411.3	Lower Marker
2	46	57.13	1,895.8	
3	380	1,281.56	5,110.6	
4	386	172.20	675.1	
5	396	314.84	1,203.8	
6	477	652.39	2,072.2	
7	646	14.21	33.3	
8	10,380	75.00	10.9	Upper Marker

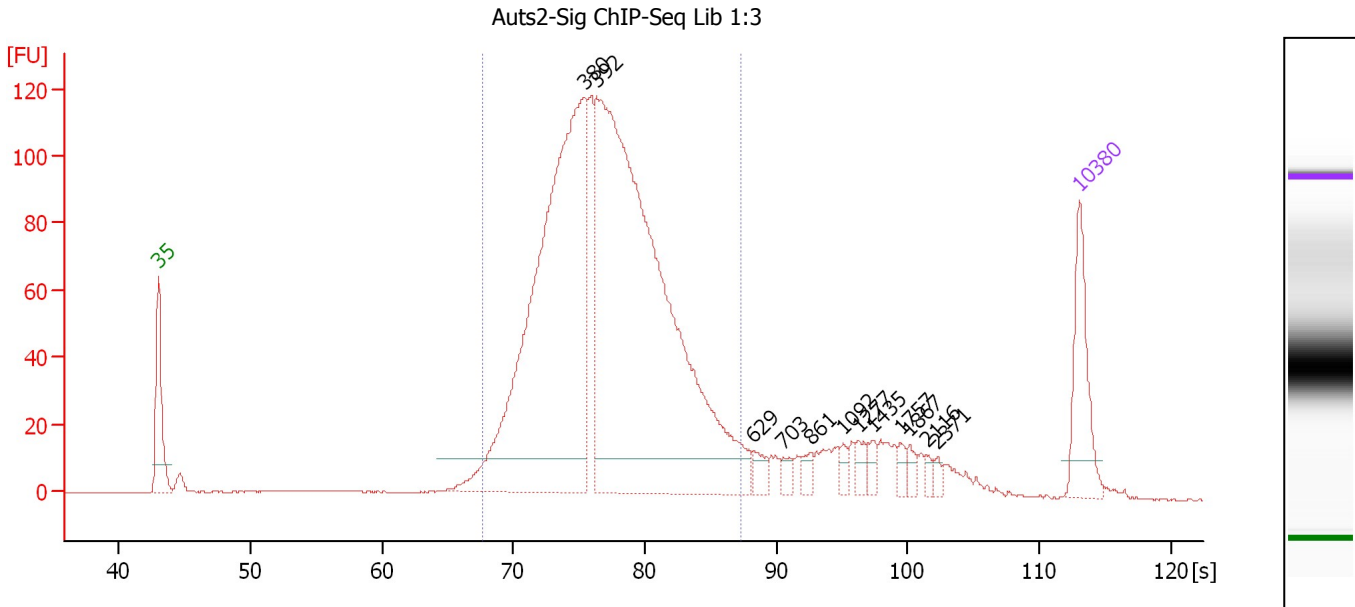
Region table for sample 3 : Auts2-Abc ChIP-Seq Lib

From [s]	To [s]	Average Size [bp]	Molarity [pmol/l]	Conc. [pg/μl]	Corr. Area % of Total	Size distribution in CV [%]	Color
67.44	88.43	417	12,661.7	3,354.78	2,210.2 92	17.3	Blue

Assay Class: High Sensitivity DNA Assay
 Data Path: C:\...ents and Settings\Bioanalyzer\2013-05-14\2013-05-14_001.xad

Created: 5/14/2013 9:38:16 AM
 Modified: 5/14/2013 10:19:41 AM

Electropherogram Summary Continued ...



Setpoint Deviations for sample 4 : Auts2-Sig ChIP-Seq Lib 1:3

Height Threshold [FU] : 10

Overall Results for sample 4 : Auts2-Sig ChIP-Seq Lib 1:3

Number of peaks found: 12 Corr. Area 1: 1,743.3
 Noise: 0.2

Peak table for sample 4 : Auts2-Sig ChIP-Seq Lib 1:3

Peak	Size [bp]	Conc. [pg/μl]	Molarity [pmol/l]	Observations
1	35	125.00	5,411.3	Lower Marker
2	380	850.49	3,387.3	
3	392	1,121.31	4,333.2	
4	629	18.01	43.4	
5	703	12.25	26.4	
6	861	12.87	22.7	
7	1,092	9.56	13.3	
8	1,277	13.45	16.0	
9	1,435	11.07	11.7	
10	1,757	9.24	8.0	
11	1,867	10.34	8.4	
12	2,116	5.80	4.2	
13	2,371	6.17	3.9	
14	10,380	75.00	10.9	Upper Marker

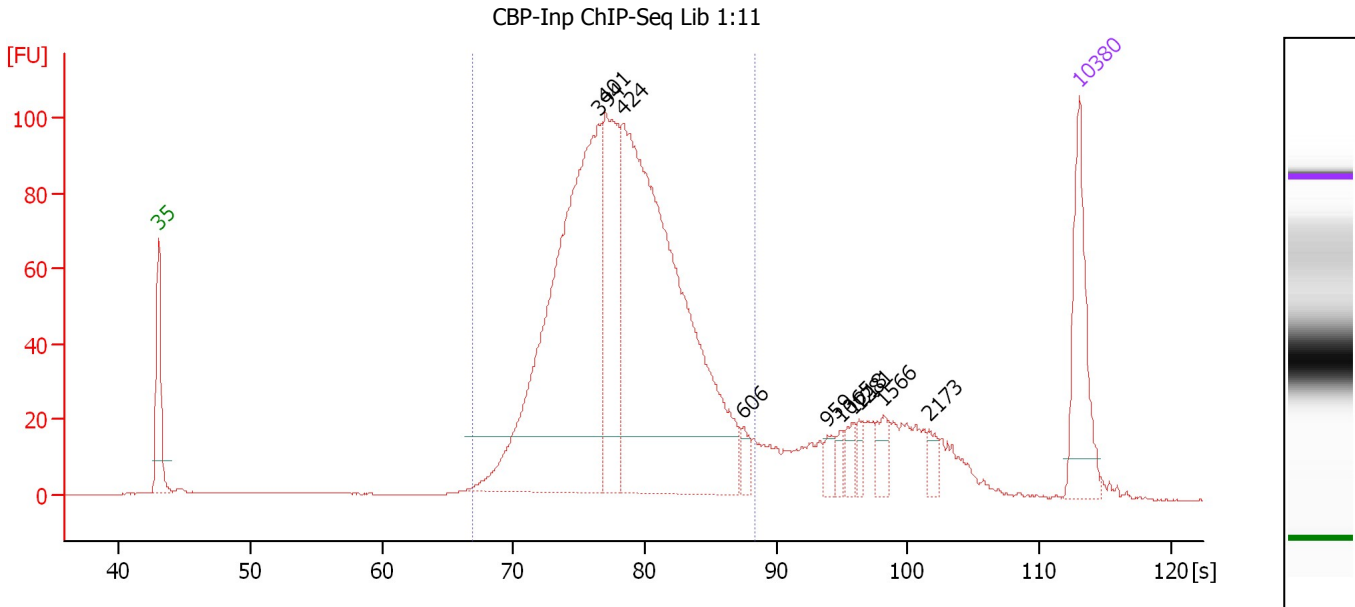
Region table for sample 4 : Auts2-Sig ChIP-Seq Lib 1:3

From [s]	To [s]	Average Size [bp]	Molarity [pmol/l]	Conc. [pg/μl]	Corr. Area % of Total	Size distribution in CV [%]	Color
67.72	87.23	409	7,831.7	2,053.79	1,743.3 85	15.7	Blue

Assay Class: High Sensitivity DNA Assay
 Data Path: C:\...ents and Settings\Bioanalyzer\2013-05-14\2013-05-14_001.xad

Created: 5/14/2013 9:38:16 AM
 Modified: 5/14/2013 10:19:41 AM

Electropherogram Summary Continued ...



Setpoint Deviations for sample 5 : CBP-Inp ChIP-Seq Lib 1:11

Height Threshold [FU] : 15

Overall Results for sample 5 : CBP-Inp ChIP-Seq Lib 1:11

Number of peaks found: 10 Corr. Area 1: 1,496.7
 Noise: 0.1

Peak table for sample 5 : CBP-Inp ChIP-Seq Lib 1:11

Peak	Size [bp]	Conc. [pg/μl]	Molarity [pmol/l]	Observations
1	35	125.00	5,411.3	Lower Marker
2	394	563.90	2,170.0	
3	401	183.16	692.6	
4	424	664.00	2,372.8	
5	606	13.34	33.4	
6	959	12.15	19.2	
7	1,065	8.70	12.4	
8	1,218	13.58	16.9	
9	1,281	9.86	11.7	
10	1,566	18.27	17.7	
11	2,173	11.16	7.8	
12	10,380	75.00	10.9	Upper Marker

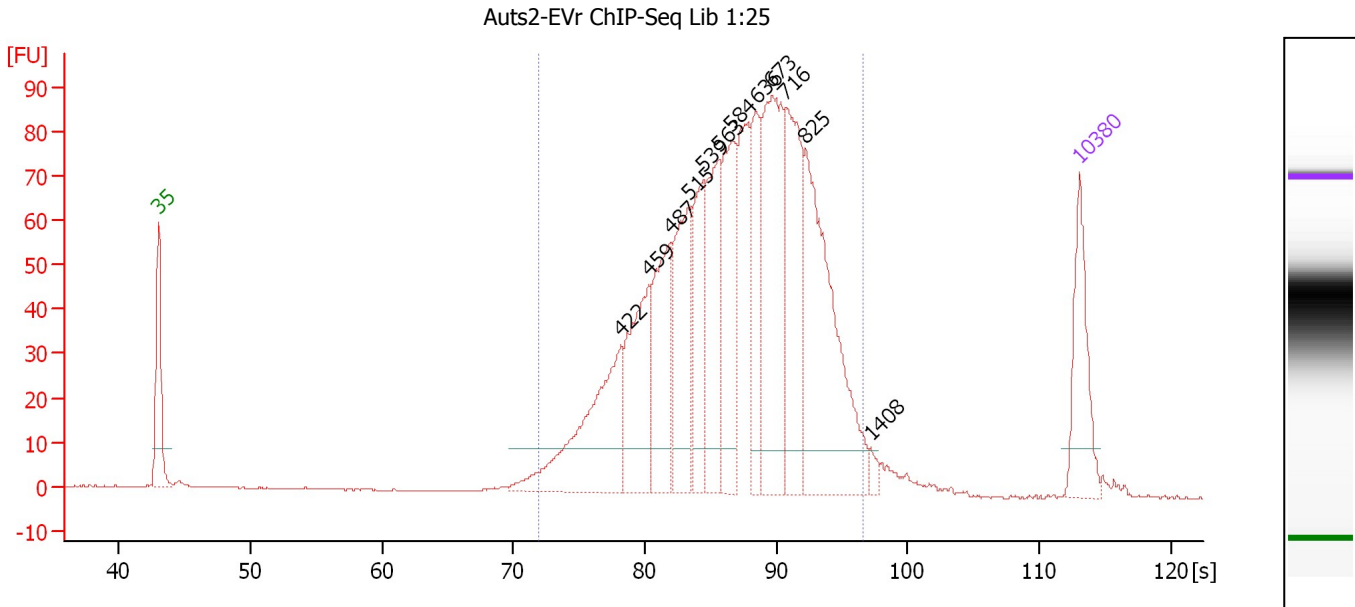
Region table for sample 5 : CBP-Inp ChIP-Seq Lib 1:11

From [s]	To [s]	Average Size [bp]	Molarity [pmol/l]	Conc. [pg/μl]	Corr. Area	% of Total	Size distribution in CV [%]	Color
66.90	88.43	429	5,361.9	1,466.91	1,496.7	82	16.4	Blue

Assay Class: High Sensitivity DNA Assay
 Data Path: C:\...ents and Settings\Bioanalyzer\2013-05-14\2013-05-14_001.xad

Created: 5/14/2013 9:38:16 AM
 Modified: 5/14/2013 10:19:41 AM

Electropherogram Summary Continued ...



Setpoint Deviations for sample 6 : Aut2-EVr ChIP-Seq Lib 1:25

Height Threshold [FU] : 10

Overall Results for sample 6 : Aut2-EVr ChIP-Seq Lib 1:25

Number of peaks found: 12 Corr. Area 1: 1,495.8
 Noise: 0.1

Peak table for sample 6 : Aut2-EVr ChIP-Seq Lib 1:25

Peak	Size [bp]	Conc. [pg/μl]	Molarity [pmol/l]	Observations
1	35	125.00	5,411.3	Lower Marker
2	422	204.39	734.5	
3	459	153.74	507.6	
4	487	139.50	433.8	
5	515	143.07	420.9	
6	539	113.08	318.1	
7	563	143.36	385.7	
8	584	137.67	357.3	
9	636	99.92	238.2	
10	673	237.59	534.7	
11	716	172.95	366.1	
12	825	287.45	528.0	
13	1,408	8.79	9.5	
14	10,380	75.00	10.9	Upper Marker

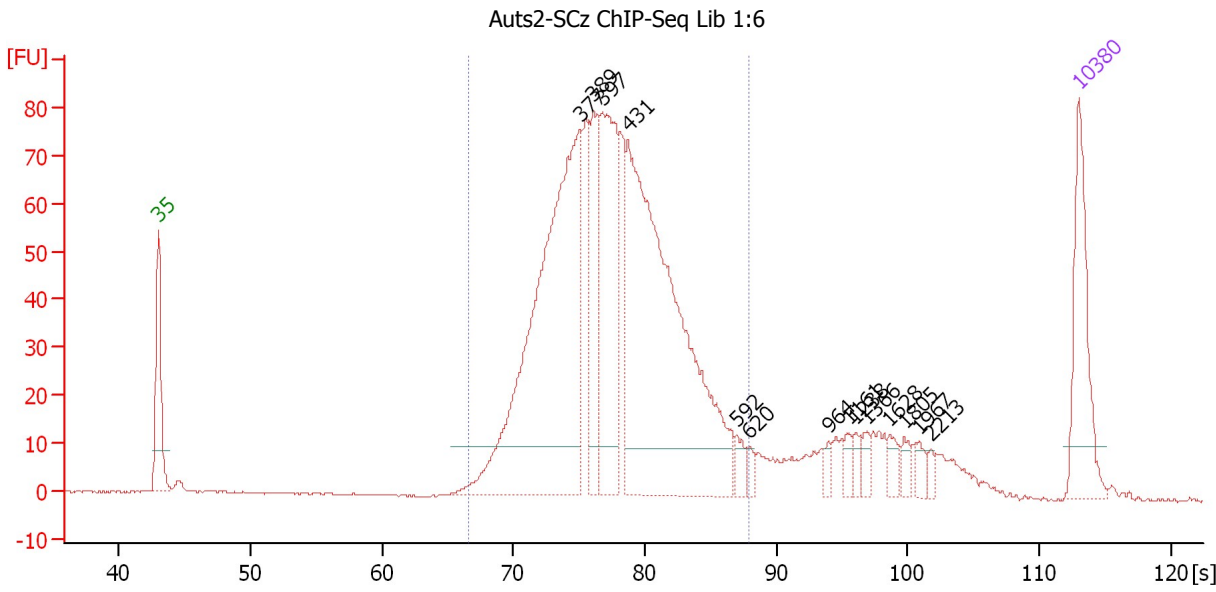
Region table for sample 6 : Aut2-EVr ChIP-Seq Lib 1:25

From [s]	To [s]	Average Size [bp]	Molarity [pmol/l]	Conc. [pg/μl]	Corr. Area	% of Total	Size distribution in CV [%]	Color
71.95	96.63	634	5,214.5	1,975.62	1,495.8	95	29.0	Blue

Assay Class: High Sensitivity DNA Assay
 Data Path: C:\...ents and Settings\Bioanalyzer\2013-05-14\2013-05-14_001.xad

Created: 5/14/2013 9:38:16 AM
 Modified: 5/14/2013 10:19:41 AM

Electropherogram Summary Continued ...



Setpoint Deviations for sample 7 : Auts2-SCz ChIP-Seq Lib 1:6

Height Threshold [FU] : 10

Overall Results for sample 7 : Auts2-SCz ChIP-Seq Lib 1:6

Number of peaks found: 14 Corr. Area 1: 1,203.0
 Noise: 0.2

Peak table for sample 7 : Auts2-SCz ChIP-Seq Lib 1:6

Peak	Size [bp]	Conc. [pg/μl]	Molarity [pmol/l]	Observations
1	35	125.00	5,411.3	Lower Marker
2	377	510.81	2,055.5	
3	389	98.26	382.6	
4	397	197.05	751.8	
5	431	524.38	1,843.2	
6	592	12.62	32.3	
7	620	8.21	20.1	
8	964	7.40	11.6	
9	1,161	8.96	11.7	
10	1,238	8.32	10.2	
11	1,366	10.08	11.2	
12	1,628	10.97	10.2	
13	1,805	9.06	7.6	
14	1,967	7.75	6.0	
15	2,213	5.29	3.6	
16	10,380	75.00	10.9	Upper Marker

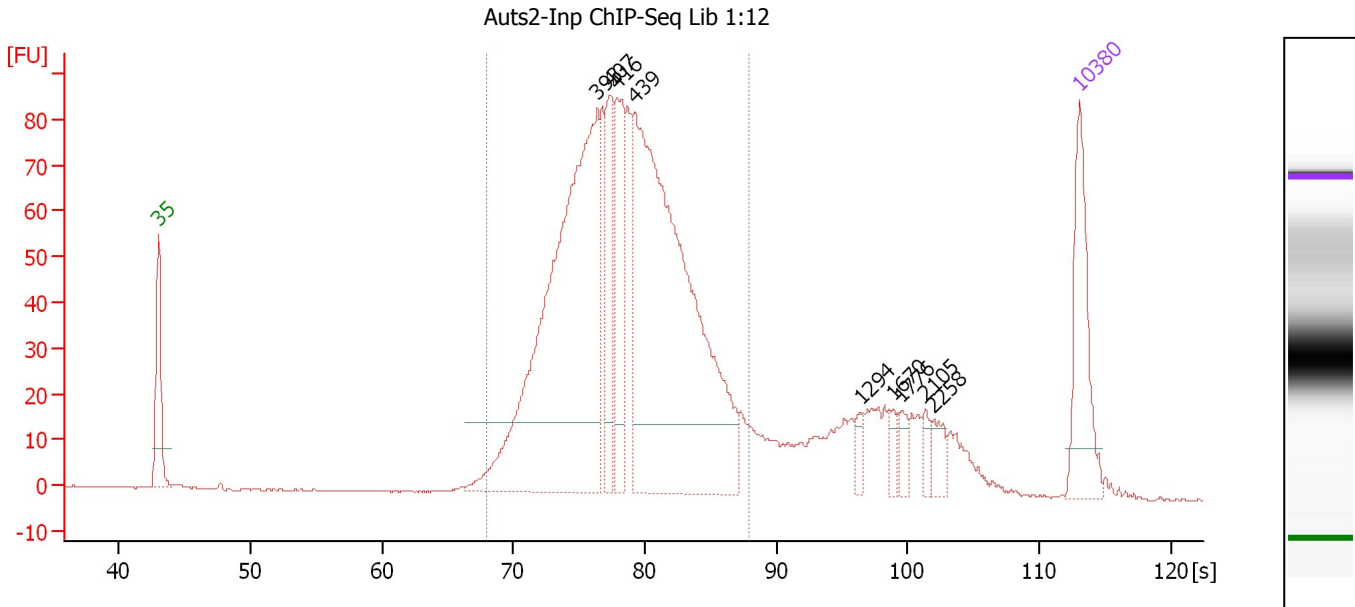
Region table for sample 7 : Auts2-SCz ChIP-Seq Lib 1:6

From [s]	To [s]	Average Size [bp]	Molarity [pmol/l]	Conc. [pg/μl]	Corr. Area % of Total	Size distribution in CV [%]	Color
66.56	87.88	416	5,616.5	1,492.00	1,203.0 85	16.3	Blue

Assay Class: High Sensitivity DNA Assay
 Data Path: C:\...ents and Settings\Bioanalyzer\2013-05-14\2013-05-14_001.xad

Created: 5/14/2013 9:38:16 AM
 Modified: 5/14/2013 10:19:41 AM

Electropherogram Summary Continued ...



Setpoint Deviations for sample 8 : Auts2-Inp ChIP-Seq Lib 1:12

Height Threshold [FU] : 15

Overall Results for sample 8 : Auts2-Inp ChIP-Seq Lib 1:12

Number of peaks found: 9 Corr. Area 1: 1,290.8
 Noise: 0.1

Peak table for sample 8 : Auts2-Inp ChIP-Seq Lib 1:12

Peak	Size [bp]	Conc. [pg/µl]	Molarity [pmol/l]	Observations
1	35	125.00	5,411.3	Lower Marker
2	393	563.08	2,172.1	
3	407	85.65	318.9	
4	416	108.70	396.0	
5	439	602.78	2,081.0	
6	1,294	10.55	12.4	
7	1,670	11.11	10.1	
8	1,776	12.89	11.0	
9	2,105	9.87	7.1	
10	2,258	16.76	11.2	
11	10,380	75.00	10.9	Upper Marker

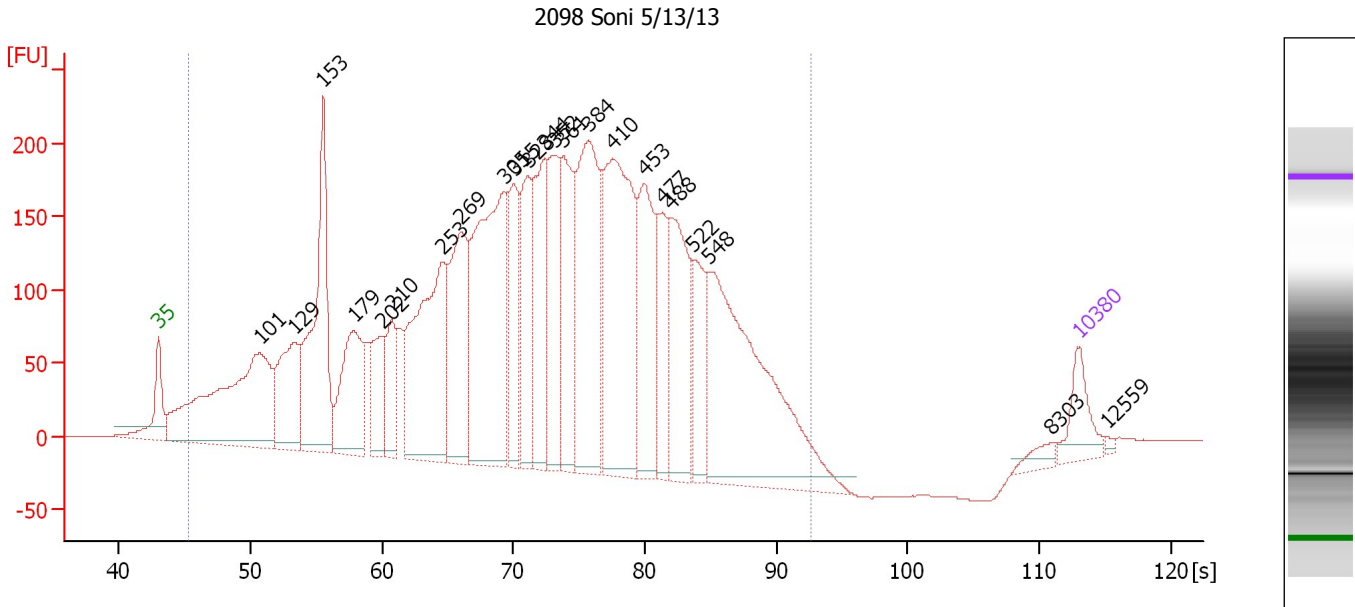
Region table for sample 8 : Auts2-Inp ChIP-Seq Lib 1:12

From [s]	To [s]	Average Size [bp]	Molarity [pmol/l]	Conc. [pg/µl]	Corr. Area % of Total	Size distribution in CV [%]	Color	
67.92	87.86	430	5,463.3	1,501.53	1,290.8	82	16.0	Blue

Assay Class: High Sensitivity DNA Assay
 Data Path: C:\...ents and Settings\Bioanalyzer\2013-05-14\2013-05-14_001.xad

Created: 5/14/2013 9:38:16 AM
 Modified: 5/14/2013 10:19:41 AM

Electropherogram Summary Continued ...



Overall Results for sample 9 : 2098 Soni 5/13/13

Number of peaks found: 23 Corr. Area 1: 6,991.2
 Noise: 0.2

Peak table for sample 9 : 2098 Soni 5/13/13


Peak	Size [bp]	Conc. [pg/μl]	Molarity [pmol/l]	Observations
1	35	125.00	5,411.3	Lower Marker
2	101	849.57	12,776.2	
3	129	325.51	3,812.1	
4	153	599.85	5,953.7	
5	179	332.10	2,818.8	
6	202	165.62	1,244.6	
7	210	152.55	1,100.7	
8	253	603.48	3,614.9	
9	269	416.97	2,352.4	
10	305	735.24	3,648.4	
11	315	252.32	1,215.2	
12	328	251.27	1,160.0	
13	344	324.71	1,431.6	
14	352	274.42	1,180.2	
15	361	306.02	1,284.5	
16	384	543.89	2,143.5	
17	410	670.57	2,475.4	
18	453	312.86	1,046.9	
19	477	186.03	591.4	
20	488	334.00	1,036.9	
21	522	177.57	515.5	
22	548	783.06	2,166.8	
23	8,303	24.42	4.5	
24	10,380	75.00	10.9	Upper Marker
25	12,559	0.00	0.0	

Assay Class: High Sensitivity DNA Assay
Data Path: C:\...ents and Settings\Bioanalyzer\2013-05-14\2013-05-14_001.xad

Created: 5/14/2013 9:38:16 AM
Modified: 5/14/2013 10:19:41 AM

Electropherogram Summary Continued ...

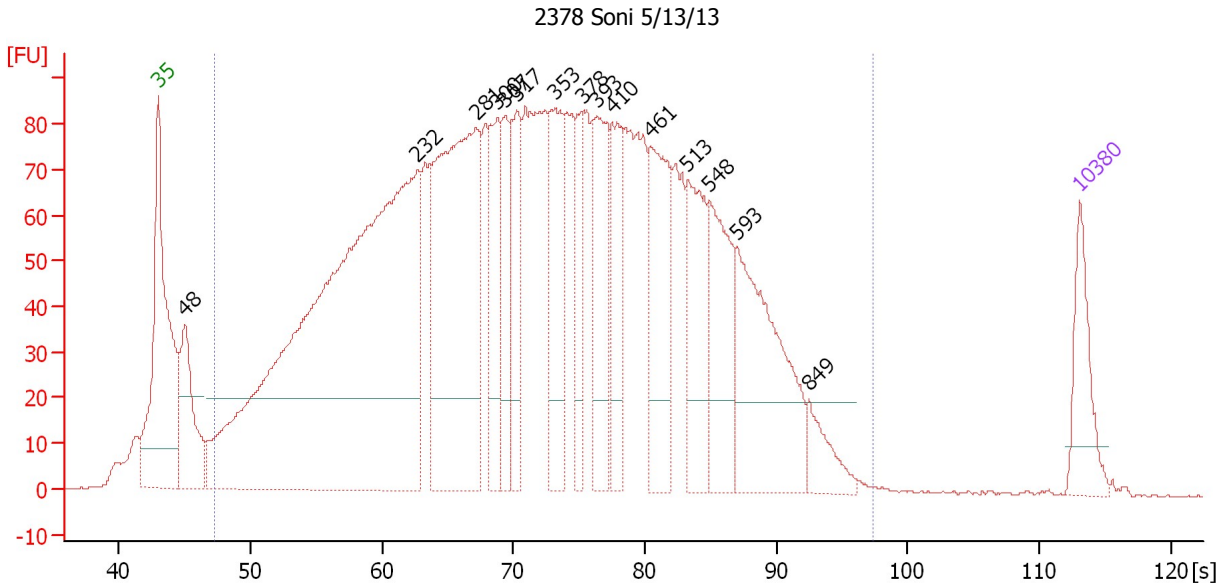
... Region table for sample 9 : 2098 Soni 5/13/13

From [s]	To [s]	Average Size [bp]	Molarity [pmol/l]	Conc. [pg/μl]	Corr. Area % of Total	Size distribution in CV [%]	Color
45.33	92.69	347	49,006.9	7,448.61	6,991.2 99	40.5	

Assay Class: High Sensitivity DNA Assay
 Data Path: C:\...ents and Settings\Bioanalyzer\2013-05-14\2013-05-14_001.xad

Created: 5/14/2013 9:38:16 AM
 Modified: 5/14/2013 10:19:41 AM

Electropherogram Summary Continued ...



Setpoint Deviations for sample 10 : 2378 Soni 5/13/13

Height Threshold [FU] : 20

Overall Results for sample 10 : 2378 Soni 5/13/13

Number of peaks found: 15 Corr. Area 1: 3,946.5
 Noise: 0.2

Peak table for sample 10 : 2378 Soni 5/13/13

Peak	Size [bp]	Conc. [pg/μl]	Molarity [pmol/l]	Observations
1	35	125.00	5,411.3	Lower Marker
2	48	196.96	6,165.8	
3	232	1,774.93	11,615.5	
4	281	701.48	3,775.9	
5	300	177.10	895.8	
6	307	123.22	609.0	
7	317	146.82	701.4	
8	353	193.03	828.3	
9	378	97.97	392.3	
10	393	200.87	774.1	
11	410	131.49	486.5	
12	461	225.50	741.4	
13	513	181.78	537.3	
14	548	179.64	496.4	
15	593	293.32	749.2	
16	849	54.89	98.0	
17	10,380	75.00	10.9	Upper Marker

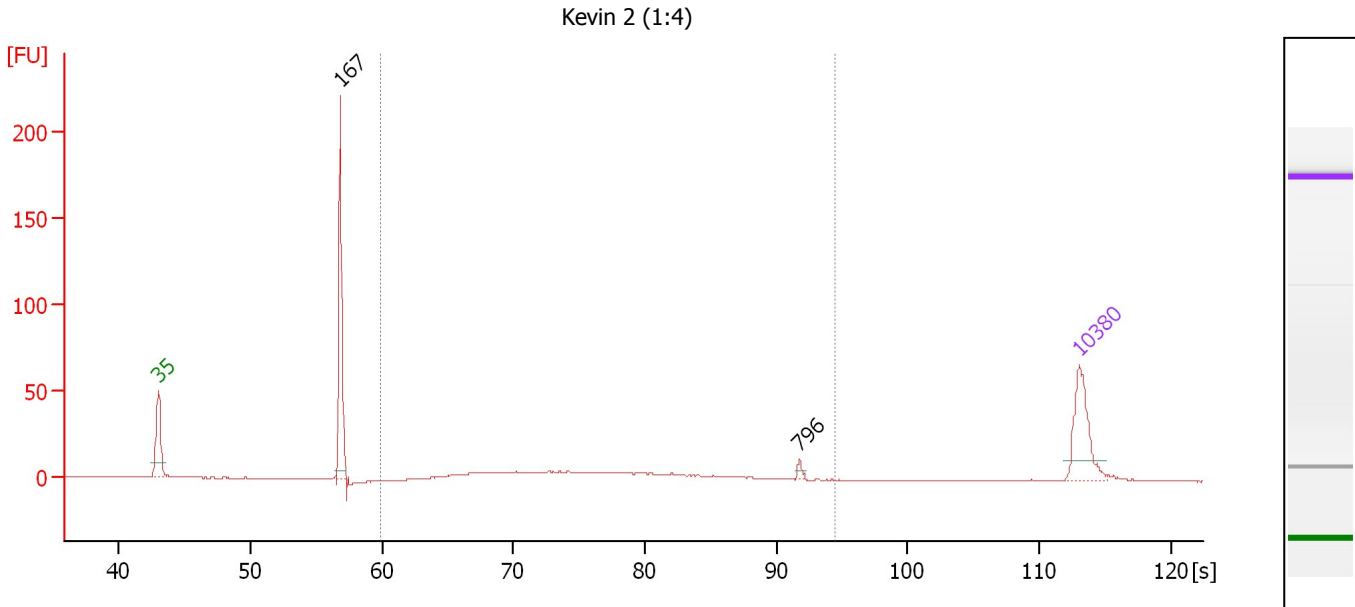
Region table for sample 10 : 2378 Soni 5/13/13

From [s]	To [s]	Average Size [bp]	Molarity [pmol/l]	Conc. [pg/μl]	Corr. Area % of Total	Size distribution in CV [%]	Color
47.29	97.40	362	38,024.8	6,155.30	3,946.5 96	47.4	Blue

Assay Class: High Sensitivity DNA Assay
 Data Path: C:\...ents and Settings\Bioanalyzer\2013-05-14\2013-05-14_001.xad

Created: 5/14/2013 9:38:16 AM
 Modified: 5/14/2013 10:19:41 AM

Electropherogram Summary Continued ...



Overall Results for sample 11 : Kevin 2 (1:4)

Number of peaks found: 2 Corr. Area 1: 107.3
 Noise: 0.1

Peak table for sample 11 : Kevin 2 (1:4)

Peak	Size [bp]	Conc. [pg/μl]	Molarity [pmol/l]	Observations
1	35	125.00	5,411.3	Lower Marker
2	167	231.07	2,097.3	
3	796	6.21	11.8	
4	10,380	75.00	10.9	Upper Marker

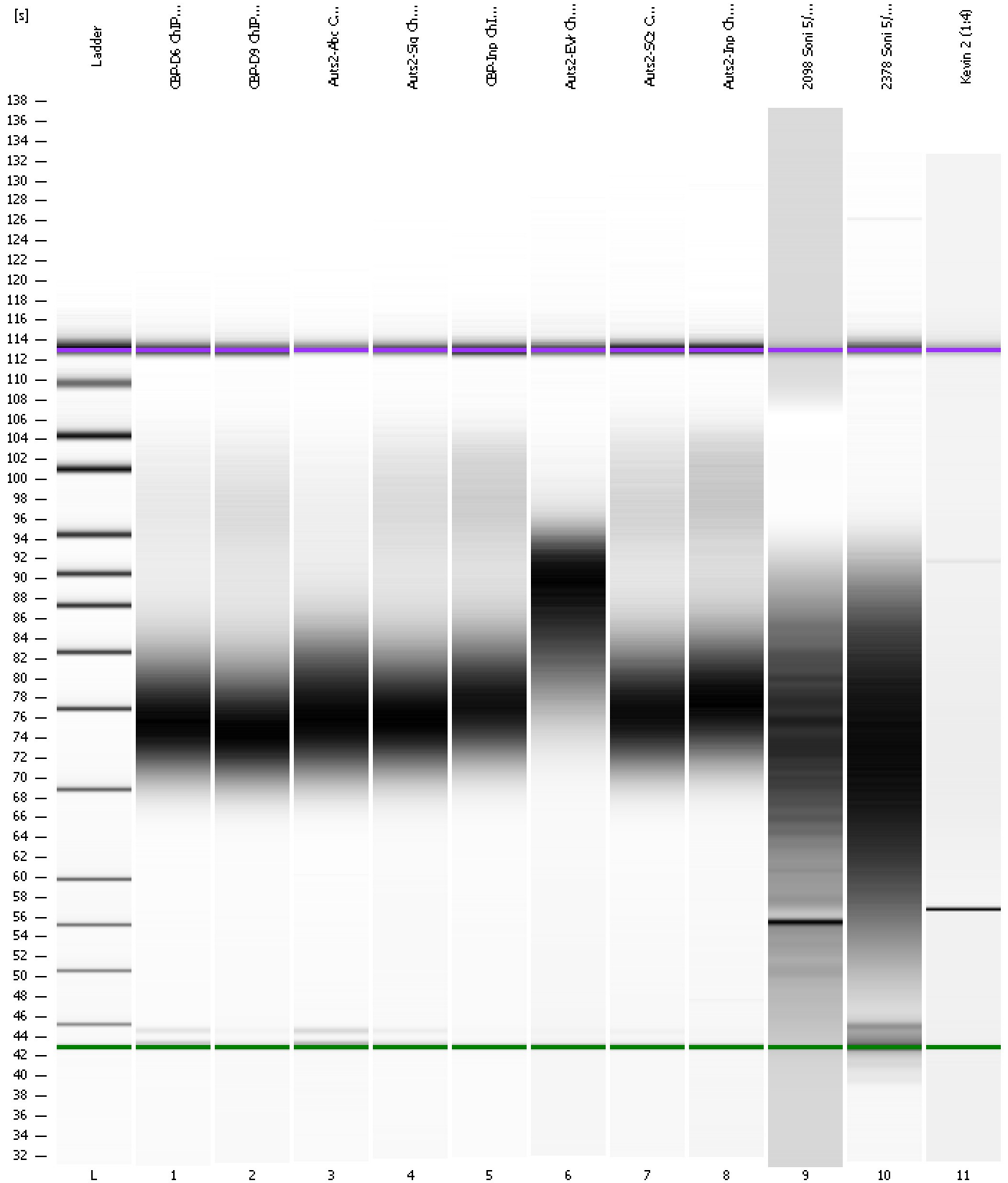
Region table for sample 11 : Kevin 2 (1:4)

From [s]	To [s]	Average Size [bp]	Molarity [pmol/l]	Conc. [pg/μl]	Corr. Area % of Total	Size distribution in CV [%]	Color
59.85	94.43	426	642.6	159.92	107.3 46	32.4	Blue

Assay Class: High Sensitivity DNA Assay
Data Path: C:\...ents and Settings\Bioanalyzer\2013-05-14\2013-05-14_001.xad

Created: 5/14/2013 9:38:16 AM
Modified: 5/14/2013 10:19:41 AM

Gel Image



Assay Class: High Sensitivity DNA Assay
 Data Path: C:\...ents and Settings\Bioanalyzer\2013-05-14\2013-05-14_001.xad

Created: 5/14/2013 9:38:16 AM
 Modified: 5/14/2013 10:19:41 AM

Run Logbook

Description	Number	Source	Category	Sub Category	Time	Time Zone	User	Host
Run ended on port 1 (Number of wells acquired: 12)		Instrument	Run		5/14/2013 10:19:36 AM	(GMT --07:00) Pacific Standard Time	UC Davis	D8XSMGH1
Run started on port 1 (File: C:\Documents and Settings\Bioanalyzer\2013-05-14\2013-05-14_001.xad)		Instrument	Run		5/14/2013 9:38:22 AM	(GMT --07:00) Pacific Standard Time	UC Davis	D8XSMGH1
Product Number : G2938B		Instrument	Run		5/14/2013 9:38:22 AM	(GMT --07:00) Pacific Standard Time	UC Davis	D8XSMGH1
Name :		Instrument	Run		5/14/2013 9:38:22 AM	(GMT --07:00) Pacific Standard Time	UC Davis	D8XSMGH1
Vendor : Agilent Technologies		Instrument	Run		5/14/2013 9:38:22 AM	(GMT --07:00) Pacific Standard Time	UC Davis	D8XSMGH1
Serial# : DE13701086		Instrument	Run		5/14/2013 9:38:22 AM	(GMT --07:00) Pacific Standard Time	UC Davis	D8XSMGH1
Firmware : C.01.069		Instrument	Run		5/14/2013 9:38:22 AM	(GMT --07:00) Pacific Standard Time	UC Davis	D8XSMGH1
Cartridge : Electrode		Instrument	Run		5/14/2013 9:38:22 AM	(GMT --07:00) Pacific Standard Time	UC Davis	D8XSMGH1