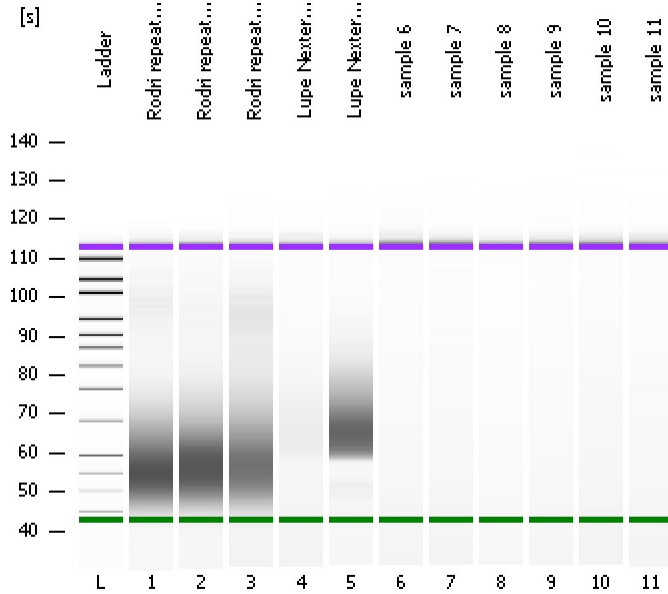


Assay Class: High Sensitivity DNA Assay
Data Path: C:\...ents and Settings\Bioanalyzer\2013-06-03\2013-06-03_001.xad

Created: 6/3/2013 12:41:07 PM
Modified: 6/3/2013 1:22:27 PM

Electrophoresis File Run Summary



Instrument Information:

Instrument Name: DE13701086 Firmware: C.01.069
Serial#: DE13701086 Type: G2938B

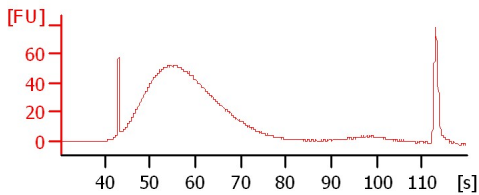
Assay Information:

Assay Origin Path: C:\Program Files\Agilent\2100 bioanalyzer\2100 expert\assays\dsDNA\High Sensitivity DNA.xsy
Assay Class: High Sensitivity DNA Assay
Version: 1.03
Assay Comments: Copyright © 2003-2010 Agilent Technologies

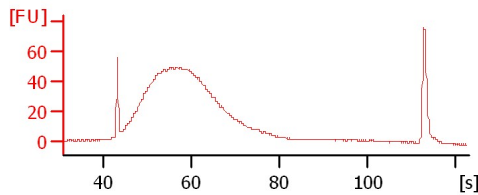
Chip Information:

Chip Lot #: Reagent Kit Lot #: Chip Comments:

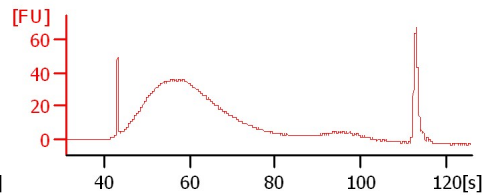
Rodri repeat sample4



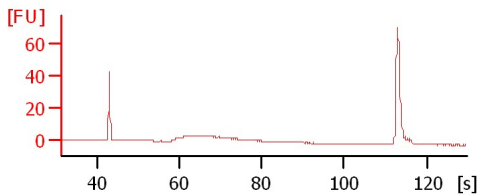
Rodri repeat sample12



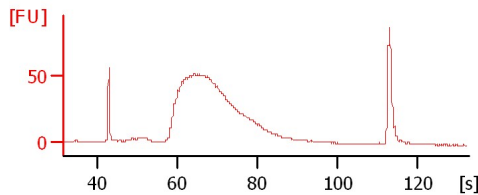
Rodri repeat sample16



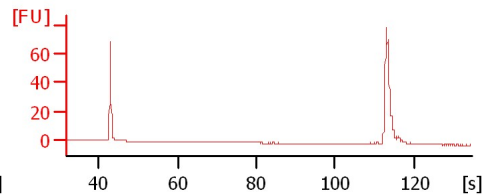
Lupe Nextera lib1:10



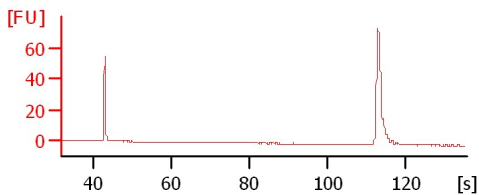
Lupe Nextera undiluted



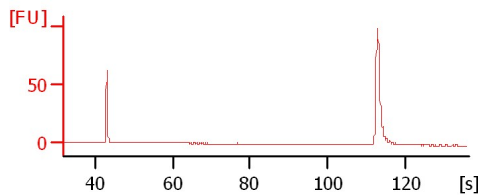
sample 6



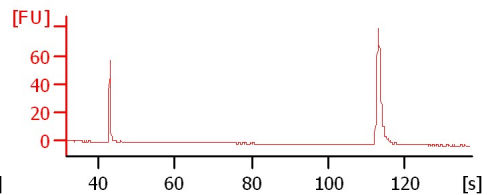
sample 7



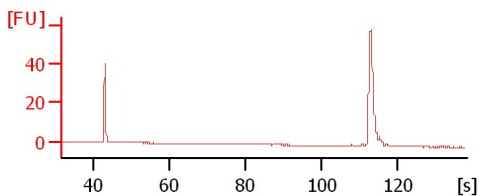
sample 8



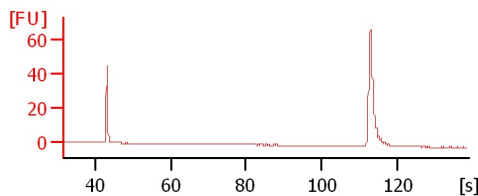
sample 9



sample 10



sample 11



Assay Class: High Sensitivity DNA Assay
Data Path: C:\...ents and Settings\Bioanalyzer\2013-06-03\2013-06-03_001.xad

Created: 6/3/2013 12:41:07 PM
Modified: 6/3/2013 1:22:27 PM

Electrophoresis File Run Summary (Chip Summary)

Sample Name	Sample Comment	Rest. Digest	Status	Observation	Result Label	Result Color
Rodri repeat sample4		<input type="checkbox"/>	✓			
Rodri repeat sample12		<input type="checkbox"/>	✓			
Rodri repeat sample16		<input type="checkbox"/>	✓			
Lupe Nextera lib1:10		<input type="checkbox"/>	✓			
Lupe Nextera undiluted		<input type="checkbox"/>	✓			
sample 6		<input type="checkbox"/>	✓			
sample 7		<input type="checkbox"/>	✓			
sample 8		<input type="checkbox"/>	✓			
sample 9		<input type="checkbox"/>	✓			
sample 10		<input type="checkbox"/>	✓			
sample 11		<input type="checkbox"/>	✓			
Ladder		<input type="checkbox"/>	✓			

Chip Lot #

Reagent Kit Lot #

Chip Comments :

Assay Class: High Sensitivity DNA Assay
Data Path: C:\...ents and Settings\Bioanalyzer\2013-06-03\2013-06-03_001.xad

Created: 6/3/2013 12:41:07 PM
Modified: 6/3/2013 1:22:27 PM

Electrophoresis Assay Details

General Analysis Settings

Number of Available Sample and Ladder Wells (Max.) : 12
Minimum Visible Range [s] : 32
Maximum Visible Range [s] : 138
Start Analysis Time Range [s] : 33
End Analysis Time Range [s] : 137.5
Ladder Concentration [pg/μl] : 1950
Uses Standard Area for Ladder Fragments
Lower Marker Concentration [pg/μl] : 125
Upper Marker Concentration [pg/μl] : 75
Used Upper Marker for Quantitation
Standard Curve Fit is Point to Point
Show Data Aligned to Lower and Upper Marker

Integrator Settings

Integration Start Time [s] : 33.05
Integration End Time [s] : 137
Slope Threshold : 0.8
Height Threshold [FU] : 5
Area Threshold : 0.1
Width Threshold [s] : 0.6
Baseline Plateau [s] : 0.5

Filter Settings

Filter Width [s] : 0.5
Polynomial Order : 4

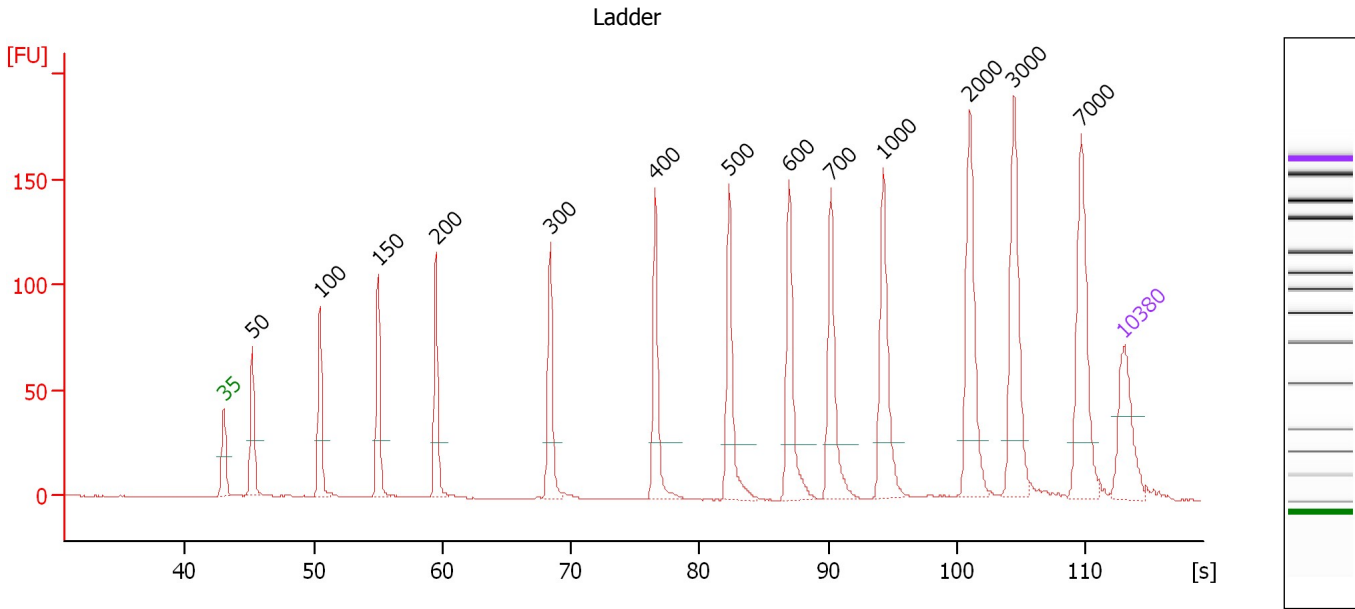
Ladder

Ladder Peak	Size	Area
1	35	160
2	50	210
3	100	208
4	150	221
5	200	242
6	300	270
7	400	305
8	500	306
9	600	336
10	700	321
11	1000	366
12	2000	413
13	3000	411
14	7000	400
15	10380	214

Assay Class: High Sensitivity DNA Assay
 Data Path: C:\...ents and Settings\Bioanalyzer\2013-06-03\2013-06-03_001.xad

Created: 6/3/2013 12:41:07 PM
 Modified: 6/3/2013 1:22:27 PM

Electropherogram Summary



Overall Results for Ladder

Noise: 0.1

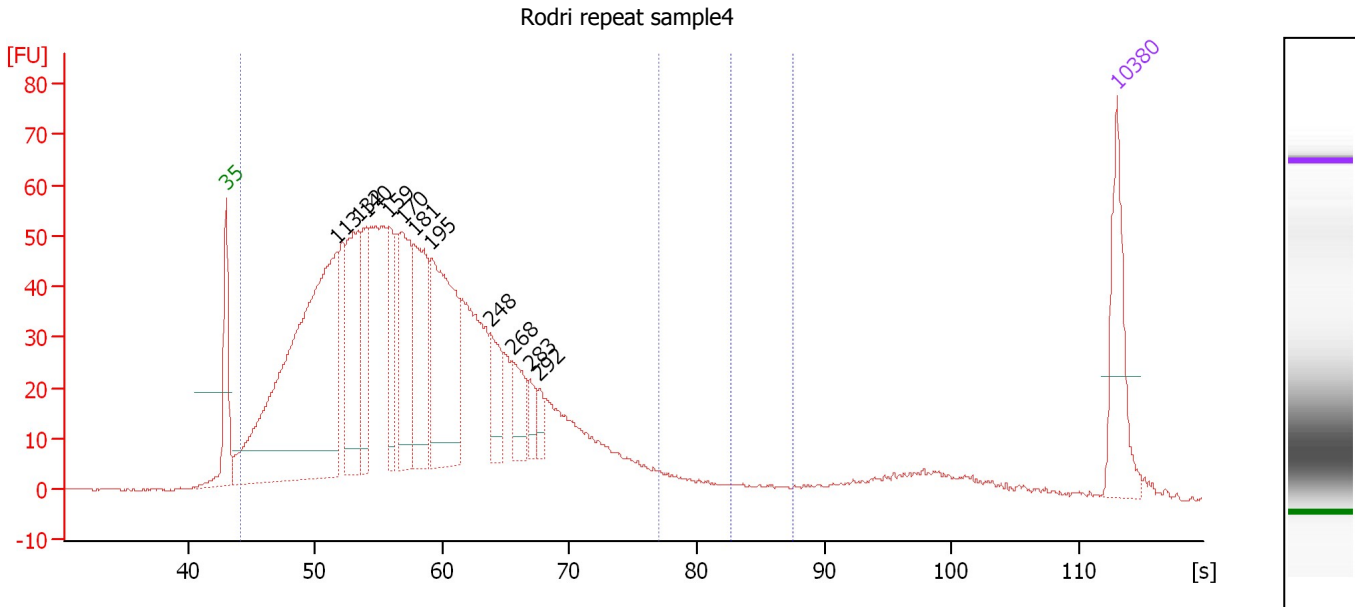
Peak table for Ladder

Peak	Size [bp]	Conc. [pg/μl]	Molarity [pmol/l]	Observations
1	35	125.00	5,411.3	Lower Marker
2	50	150.00	4,545.5	Ladder Peak
3	100	150.00	2,272.7	Ladder Peak
4	150	150.00	1,515.2	Ladder Peak
5	200	150.00	1,136.4	Ladder Peak
6	300	150.00	757.6	Ladder Peak
7	400	150.00	568.2	Ladder Peak
8	500	150.00	454.5	Ladder Peak
9	600	150.00	378.8	Ladder Peak
10	700	150.00	324.7	Ladder Peak
11	1,000	150.00	227.3	Ladder Peak
12	2,000	150.00	113.6	Ladder Peak
13	3,000	150.00	75.8	Ladder Peak
14	7,000	150.00	32.5	Ladder Peak
15	10,380	75.00	10.9	Upper Marker

Assay Class: High Sensitivity DNA Assay
 Data Path: C:\...ents and Settings\Bioanalyzer\2013-06-03\2013-06-03_001.xad

Created: 6/3/2013 12:41:07 PM
 Modified: 6/3/2013 1:22:27 PM

Electropherogram Summary Continued ...



Overall Results for sample 1 : Rodri repeat sample4

Number of peaks found: 11 Corr. Area 1: 1,792.6
 Noise: 0.2 Corr. Area 2: 11.7

Peak table for sample 1 : Rodri repeat sample4

Peak	Size [bp]	Conc. [pg/µl]	Molarity [pmol/l]	Observations
1	35	125.00	5,411.3	Lower Marker
2	113	787.45	10,514.1	
3	132	206.68	2,377.5	
4	140	118.28	1,283.2	
5	159	95.91	914.8	
6	170	165.12	1,471.1	
7	181	166.29	1,393.3	
8	195	264.45	2,051.4	
9	248	64.35	392.5	
10	268	52.23	295.5	
11	283	22.29	119.3	
12	292	16.73	86.9	
13	10,380	75.00	10.9	Upper Marker

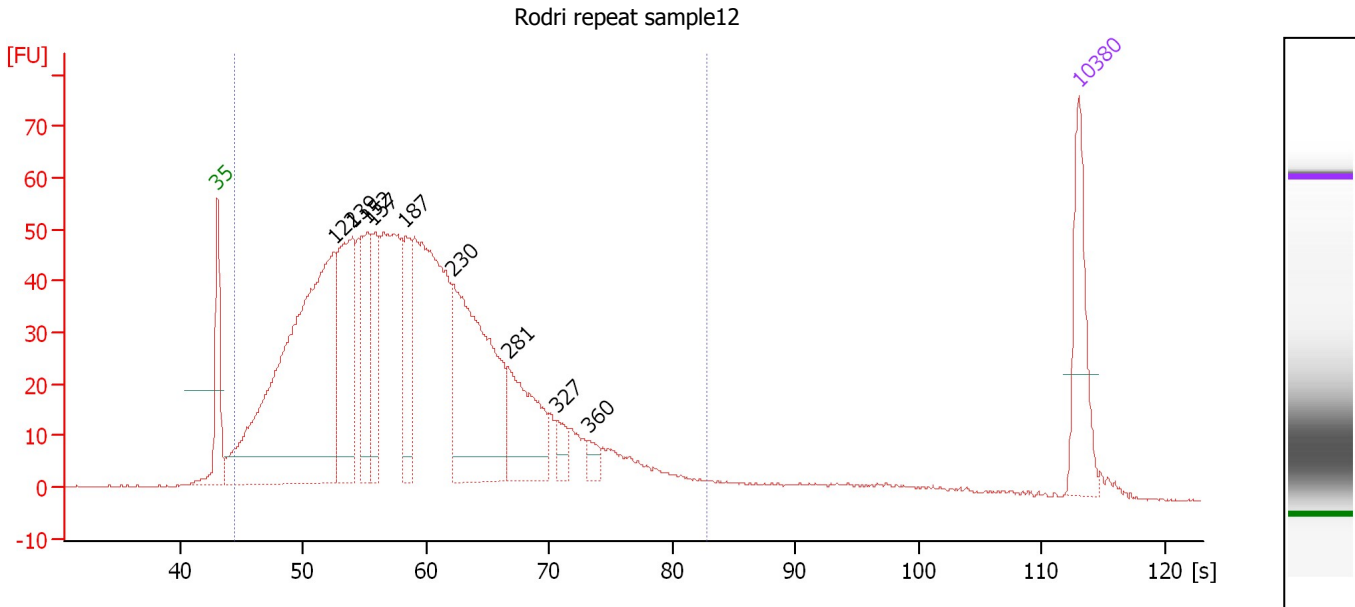
Region table for sample 1 : Rodri repeat sample4

From [s]	To [s]	Average Size [bp]	Molarity [pmol/l]	Conc. [pg/µl]	Corr. Area % of Total	Size distribution in CV [%]	Color
44.09	77.01	182	35,008.1	3,129.37	1,792.6 94	43.5	Blue
82.60	87.60	557	39.7	14.58	11.7 1	5.7	Dark Blue

Assay Class: High Sensitivity DNA Assay
 Data Path: C:\...ents and Settings\Bioanalyzer\2013-06-03\2013-06-03_001.xad

Created: 6/3/2013 12:41:07 PM
 Modified: 6/3/2013 1:22:27 PM

Electropherogram Summary Continued ...



Overall Results for sample 2 : Rodri repeat sample12

Number of peaks found: 9 Corr. Area 1: 1,776.6
 Noise: 0.1

Peak table for sample 2 : Rodri repeat sample12

Peak	Size [bp]	Conc. [pg/µl]	Molarity [pmol/l]	Observations
1	35	125.00	5,411.3	Lower Marker
2	122	836.56	10,375.3	
3	139	248.20	2,712.8	
4	152	138.01	1,374.0	
5	157	100.14	966.3	
6	187	107.68	874.6	
7	230	361.65	2,387.1	
8	281	139.11	751.1	
9	327	23.53	109.0	
10	360	14.81	62.4	
11	10,380	75.00	10.9	Upper Marker

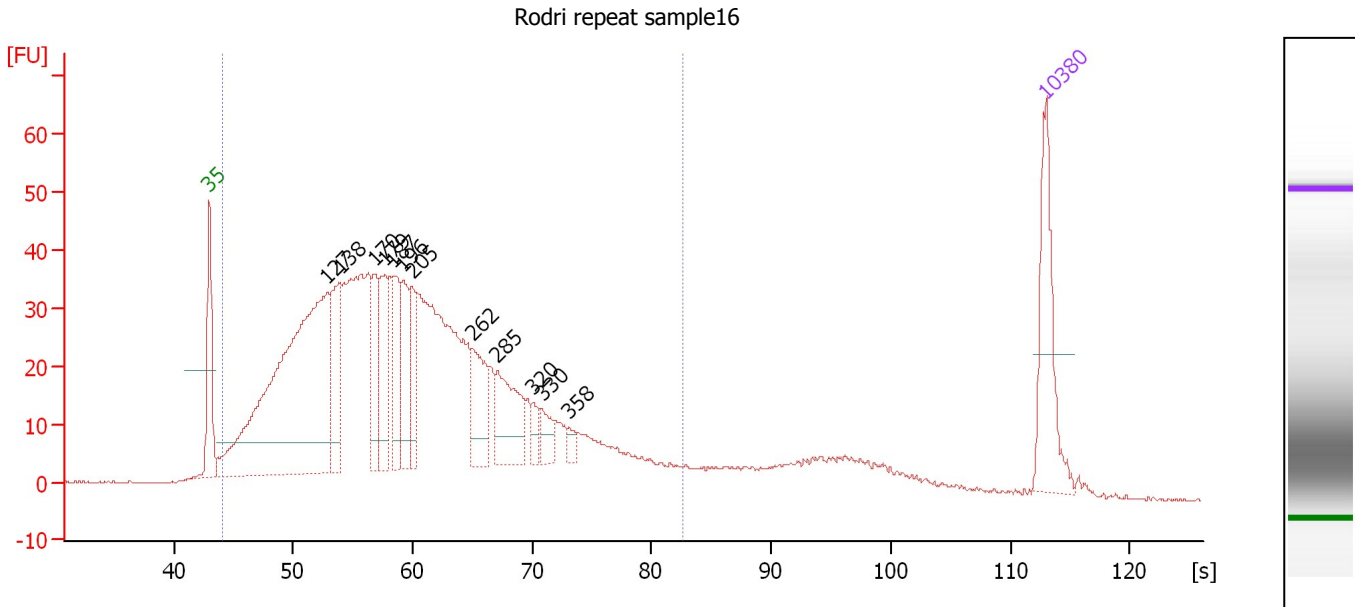
Region table for sample 2 : Rodri repeat sample12

From [s]	To [s]	Average Size [bp]	Molarity [pmol/l]	Conc. [pg/µl]	Corr. Area % of Total	Size distribution in CV [%]	Color	
44.46	82.76	196	32,453.3	3,069.90	1,776.6	95	45.4	Blue

Assay Class: High Sensitivity DNA Assay
 Data Path: C:\...ents and Settings\Bioanalyzer\2013-06-03\2013-06-03_001.xad

Created: 6/3/2013 12:41:07 PM
 Modified: 6/3/2013 1:22:27 PM

Electropherogram Summary Continued ...



Overall Results for sample 3 : Rodri repeat sample16

Number of peaks found: 12 Corr. Area 1: 1,356.9
 Noise: 0.1

Peak table for sample 3 : Rodri repeat sample16

Peak	Size [bp]	Conc. [pg/μl]	Molarity [pmol/l]	Observations
1	35	125.00	5,411.3	Lower Marker
2	127	646.36	7,729.8	
3	138	117.42	1,287.8	
4	170	68.89	613.9	
5	179	81.72	689.8	
6	187	78.81	637.0	
7	196	73.84	569.6	
8	205	56.73	419.4	
9	262	70.86	410.5	
10	285	87.96	467.2	
11	320	15.90	75.2	
12	330	22.48	103.3	
13	358	8.75	37.0	
14	10,380	75.00	10.9	Upper Marker

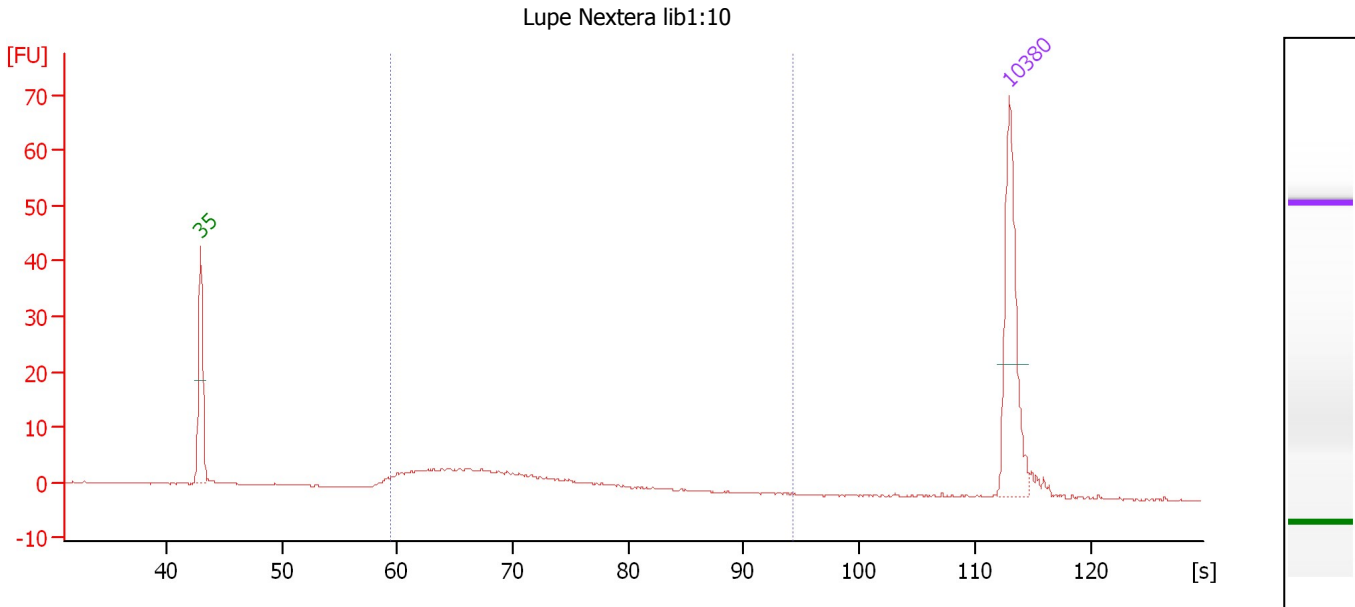
Region table for sample 3 : Rodri repeat sample16

From [s]	To [s]	Average Size [bp]	Molarity [pmol/l]	Conc. [pg/μl]	Corr. Area % of Total	Size distribution in CV [%]	Color
44.04	82.69	207	26,178.1	2,536.78	1,356.9 91	46.7	■

Assay Class: High Sensitivity DNA Assay
 Data Path: C:\...ents and Settings\Bioanalyzer\2013-06-03\2013-06-03_001.xad

Created: 6/3/2013 12:41:07 PM
 Modified: 6/3/2013 1:22:27 PM

Electropherogram Summary Continued ...



Overall Results for sample 4 : Lupe Nextera lib1:10

Number of peaks found: 0 Corr. Area 1: 84.0
 Noise: 0.1

Peak table for sample 4 : Lupe Nextera lib1:10

Peak	Size [bp]	Conc. [pg/μl]	Molarity [pmol/l]	Observations
1	35	125.00	5,411.3	Lower Marker
2	10,380	75.00	10.9	Upper Marker

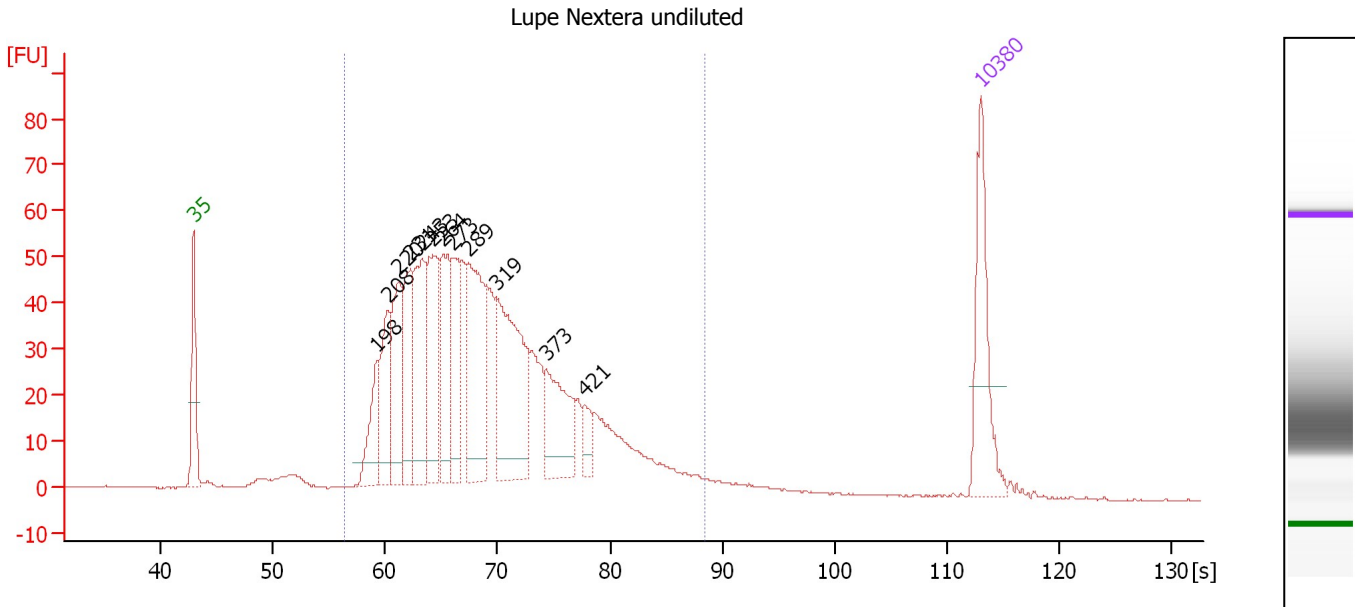
Region table for sample 4 : Lupe Nextera lib1:10

From [s]	To [s]	Average Size [bp]	Molarity [pmol/l]	Conc. [pg/μl]	Corr. Area	% of Total	Size distribution in CV [%]	Color
59.50	94.29	323	714.4	138.00	84.0	79	31.8	Blue

Assay Class: High Sensitivity DNA Assay
 Data Path: C:\...ents and Settings\Bioanalyzer\2013-06-03\2013-06-03_001.xad

Created: 6/3/2013 12:41:07 PM
 Modified: 6/3/2013 1:22:27 PM

Electropherogram Summary Continued ...



Overall Results for sample 5 : Lupe Nextera undiluted

Number of peaks found: 12 Corr. Area 1: 1,247.4
 Noise: 0.1

Peak table for sample 5 : Lupe Nextera undiluted

Peak	Size [bp]	Conc. [pg/μl]	Molarity [pmol/l]	Observations
1	35	125.00	5,411.3	Lower Marker
2	198	62.01	475.4	
3	208	83.57	607.8	
4	220	100.05	690.3	
5	231	96.21	631.5	
6	243	118.06	737.1	
7	253	123.44	739.7	
8	264	95.20	546.1	
9	273	92.16	512.0	
10	289	152.13	798.0	
11	319	188.13	894.0	
12	373	88.39	358.7	
13	421	19.47	70.0	
14	10,380	75.00	10.9	Upper Marker

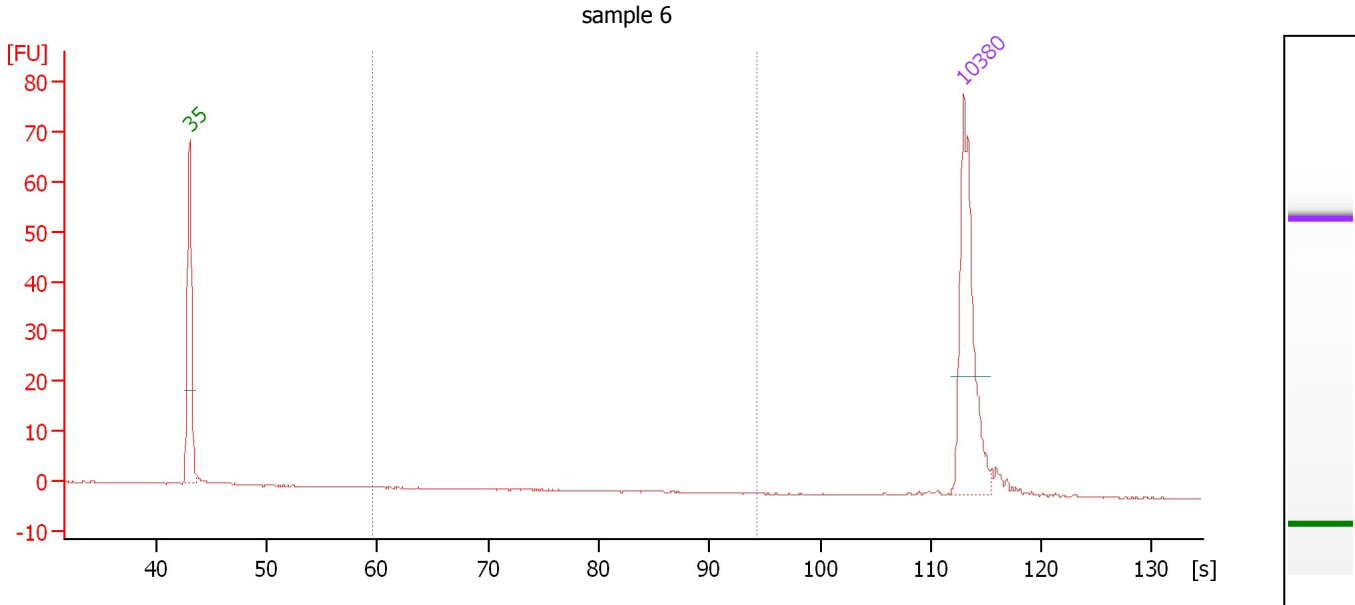
Region table for sample 5 : Lupe Nextera undiluted

From [s]	To [s]	Average Size [bp]	Molarity [pmol/l]	Conc. [pg/μl]	Corr. Area	% of Total	Size distribution in CV [%]	Color
56.36	88.38	312	8,813.7	1,653.14	1,247.4	95	28.1	Blue

Assay Class: High Sensitivity DNA Assay
 Data Path: C:\...ents and Settings\Bioanalyzer\2013-06-03\2013-06-03_001.xad

Created: 6/3/2013 12:41:07 PM
 Modified: 6/3/2013 1:22:27 PM

Electropherogram Summary Continued ...



Overall Results for sample 6 : sample 6

Number of peaks found: 0 Corr. Area 1: 0.0
 Noise: 0.1

Peak table for sample 6 : sample 6

Peak	Size [bp]	Conc. [pg/μl]	Molarity [pmol/l]	Observations
1	35	125.00	5,411.3	Lower Marker
2	10,380	75.00	10.9	Upper Marker

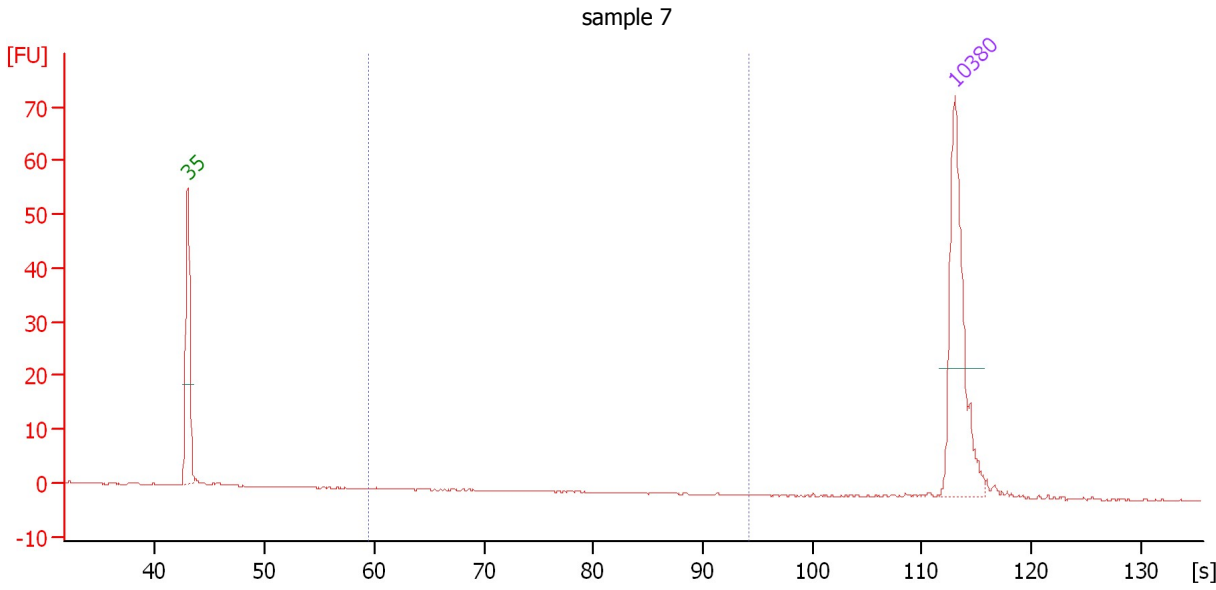
Region table for sample 6 : sample 6

From [s]	To [s]	Average Size [bp]	Molarity [pmol/l]	Conc. [pg/μl]	Corr. Area	% of Total	Size distribution in CV [%]	Color
59.50	94.29	0	0.0	0.00	0.0	0	0.0	■

Assay Class: High Sensitivity DNA Assay
 Data Path: C:\...ents and Settings\Bioanalyzer\2013-06-03\2013-06-03_001.xad

Created: 6/3/2013 12:41:07 PM
 Modified: 6/3/2013 1:22:27 PM

Electropherogram Summary Continued ...



Overall Results for sample 7 : sample 7

Number of peaks found: 0 Corr. Area 1: 0.0
 Noise: 0.1

Peak table for sample 7 : sample 7

Peak	Size [bp]	Conc. [pg/μl]	Molarity [pmol/l]	Observations
1	35	125.00	5,411.3	Lower Marker
2	10,380	75.00	10.9	Upper Marker

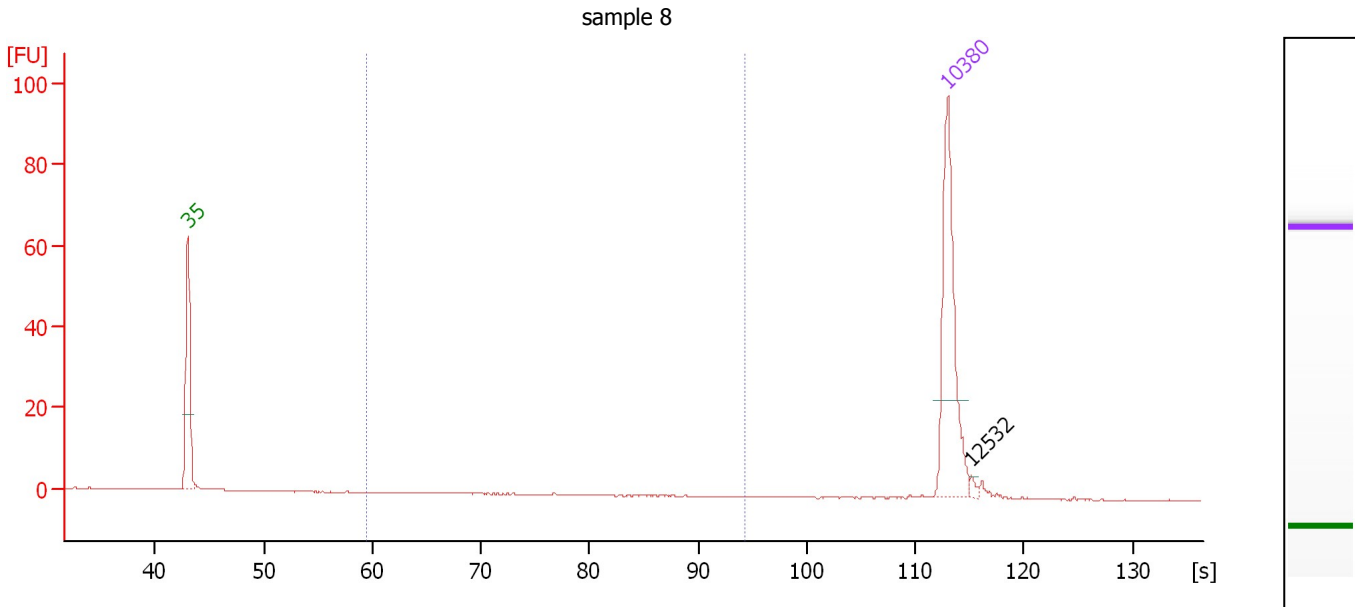
Region table for sample 7 : sample 7

From [s]	To [s]	Average Size [bp]	Molarity [pmol/l]	Conc. [pg/μl]	Corr. Area	% of Total	Size distribution in CV [%]	Color
59.50	94.29	513	0.1	0.02	0.0	0	54.8	Blue

Assay Class: High Sensitivity DNA Assay
 Data Path: C:\...ents and Settings\Bioanalyzer\2013-06-03\2013-06-03_001.xad

Created: 6/3/2013 12:41:07 PM
 Modified: 6/3/2013 1:22:27 PM

Electropherogram Summary Continued ...



Overall Results for sample 8 : sample 8

Number of peaks found: 1 Corr. Area 1: 0.0
 Noise: 0.1

Peak table for sample 8 : sample 8

Peak	Size [bp]	Conc. [pg/μl]	Molarity [pmol/l]	Observations
1	35	125.00	5,411.3	Lower Marker
2	10,380	75.00	10.9	Upper Marker
3	12,532	0.00	0.0	

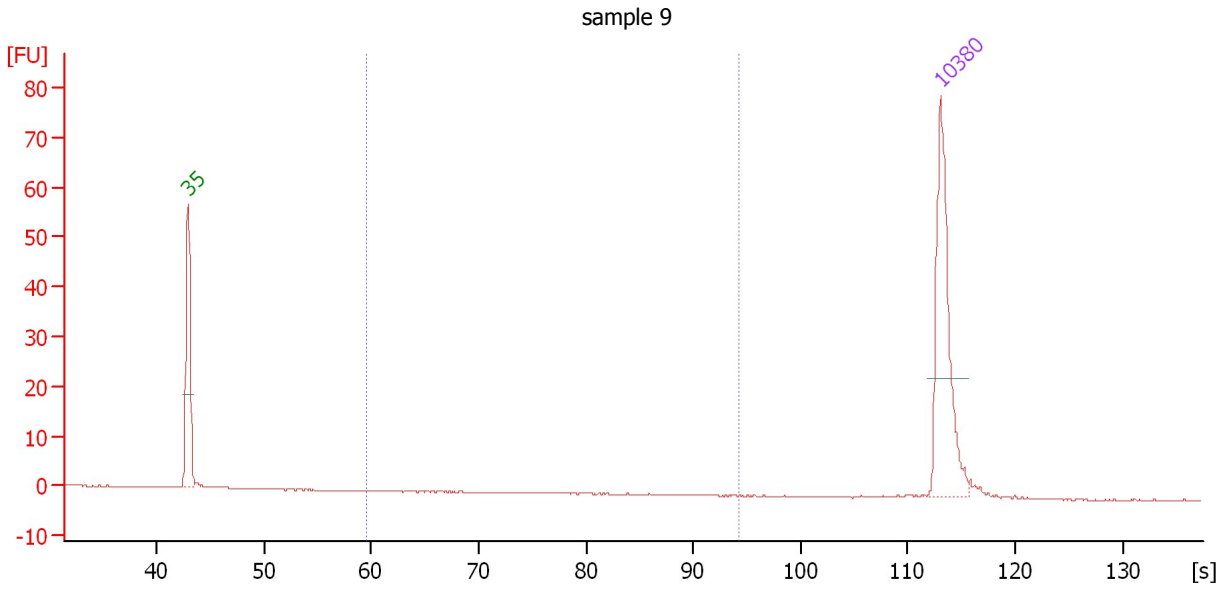
Region table for sample 8 : sample 8

From [s]	To [s]	Average Size [bp]	Molarity [pmol/l]	Conc. [pg/μl]	Corr. Area	% of Total	Size distribution in CV [%]	Color
59.50	94.29	404	0.1	0.02	0.0	0	0.1	Blue

Assay Class: High Sensitivity DNA Assay
 Data Path: C:\...ents and Settings\Bioanalyzer\2013-06-03\2013-06-03_001.xad

Created: 6/3/2013 12:41:07 PM
 Modified: 6/3/2013 1:22:27 PM

Electropherogram Summary Continued ...



Overall Results for sample 9 : sample 9

Number of peaks found: 0 Corr. Area 1: 0.0
 Noise: 0.1

Peak table for sample 9 : sample 9

Peak	Size [bp]	Conc. [pg/μl]	Molarity [pmol/l]	Observations
1	35	125.00	5,411.3	Lower Marker
2	10,380	75.00	10.9	Upper Marker

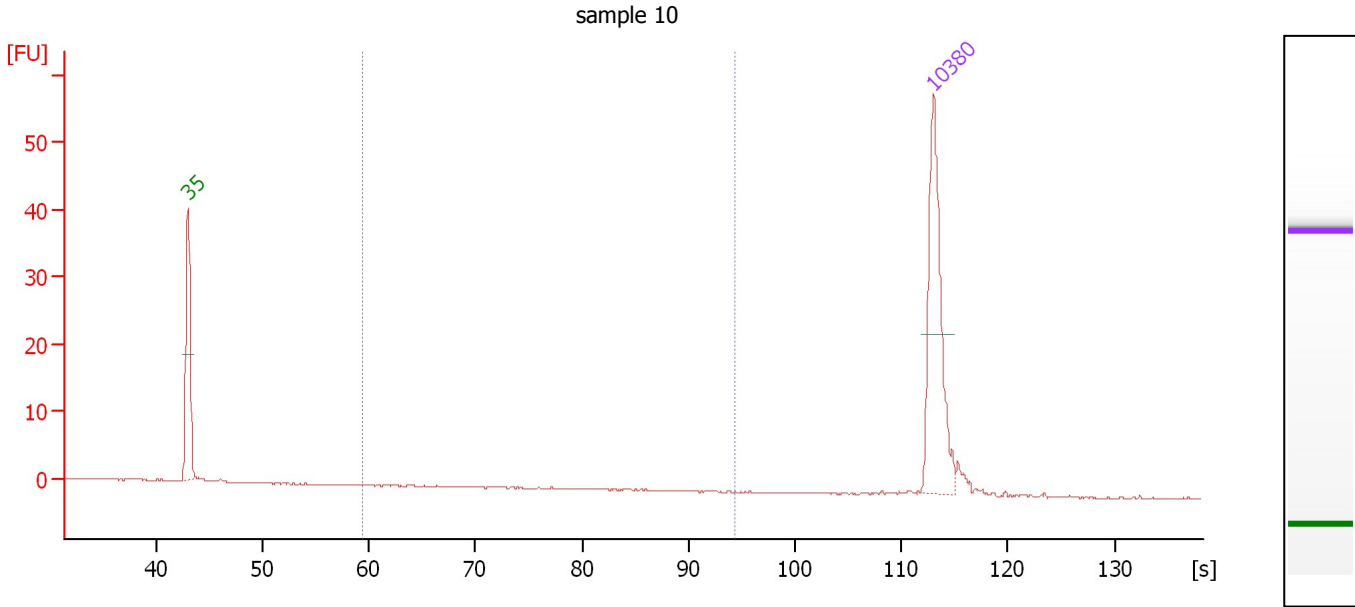
Region table for sample 9 : sample 9

From [s]	To [s]	Average Size [bp]	Molarity [pmol/l]	Conc. [pg/μl]	Corr. Area % of Total	Size distribution in CV [%]	Color
59.50	94.29	0	0.0	0.00	0.0	0	■

Assay Class: High Sensitivity DNA Assay
 Data Path: C:\...ents and Settings\Bioanalyzer\2013-06-03\2013-06-03_001.xad

Created: 6/3/2013 12:41:07 PM
 Modified: 6/3/2013 1:22:27 PM

Electropherogram Summary Continued ...



Overall Results for sample 10 : sample 10

Number of peaks found: 0 Corr. Area 1: 0.0
 Noise: 0.1

Peak table for sample 10 : sample 10

Peak	Size [bp]	Conc. [pg/μl]	Molarity [pmol/l]	Observations
1	35	125.00	5,411.3	Lower Marker
2	10,380	75.00	10.9	Upper Marker

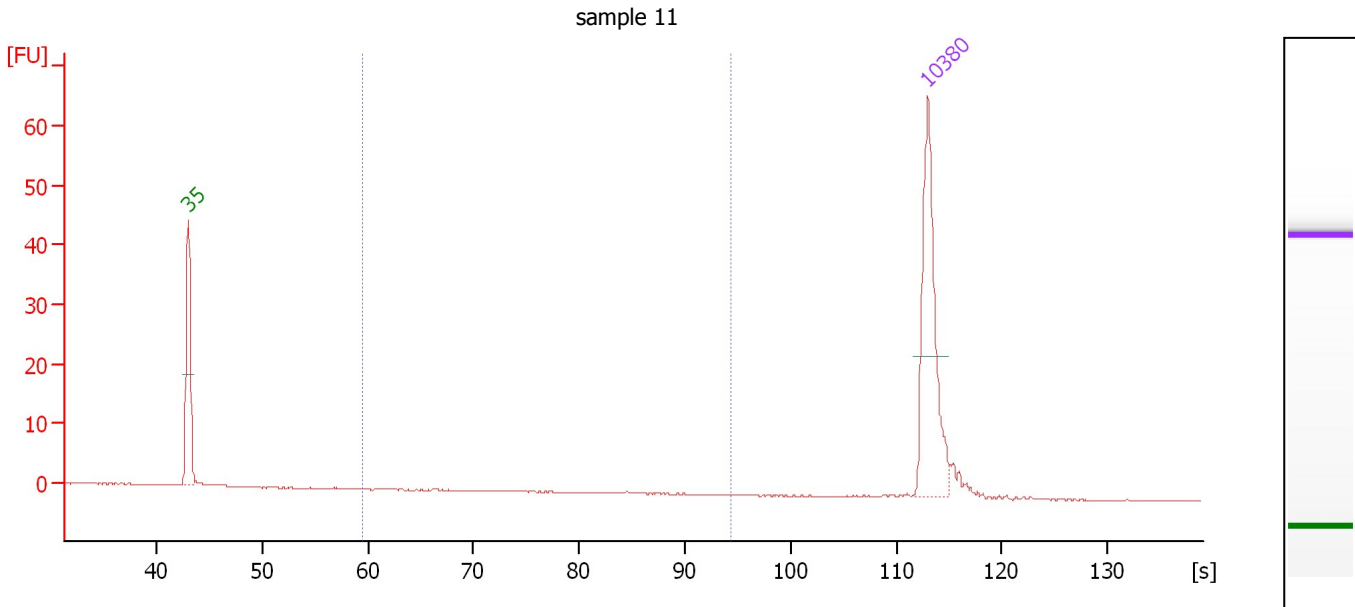
Region table for sample 10 : sample 10

From [s]	To [s]	Average Size [bp]	Molarity [pmol/l]	Conc. [pg/μl]	Corr. Area % of Total	Size distribution in CV [%]	Color
59.50	94.29	410	0.0	0.00	0.0	0	Blue

Assay Class: High Sensitivity DNA Assay
 Data Path: C:\...ents and Settings\Bioanalyzer\2013-06-03\2013-06-03_001.xad

Created: 6/3/2013 12:41:07 PM
 Modified: 6/3/2013 1:22:27 PM

Electropherogram Summary Continued ...



Overall Results for sample 11 : sample 11

Number of peaks found: 0 Corr. Area 1: 0.0
 Noise: 0.1

Peak table for sample 11 : sample 11

Peak	Size [bp]	Conc. [pg/μl]	Molarity [pmol/l]	Observations
1	35	125.00	5,411.3	Lower Marker
2	10,380	75.00	10.9	Upper Marker

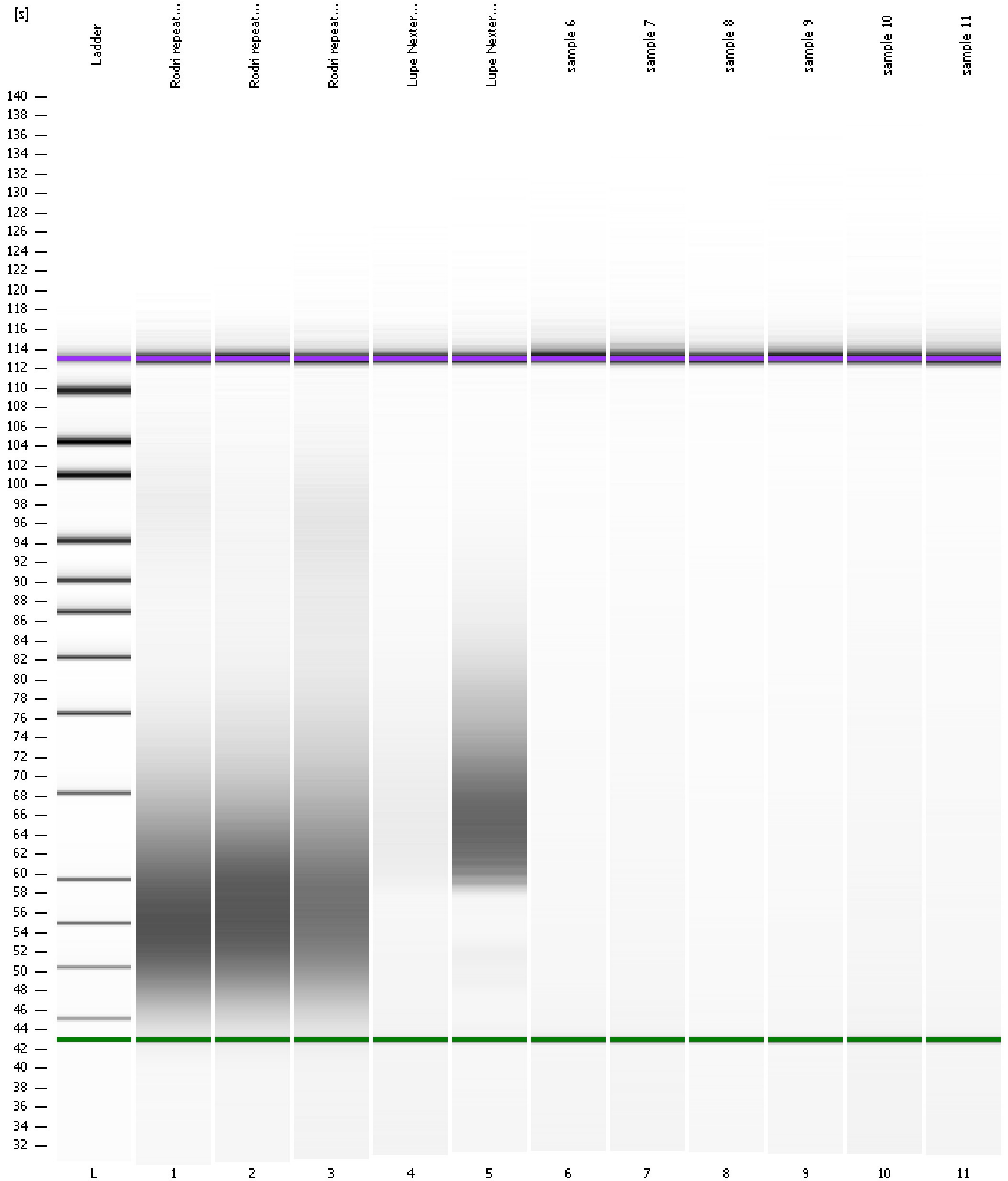
Region table for sample 11 : sample 11

From [s]	To [s]	Average Size [bp]	Molarity [pmol/l]	Conc. [pg/μl]	Corr. Area % of Total	Size distribution in CV [%]	Color	
59.50	94.29	348	0.3	0.07	0.0	1	34.3	Blue

Assay Class: High Sensitivity DNA Assay
Data Path: C:\...ents and Settings\Bioanalyzer\2013-06-03\2013-06-03_001.xad

Created: 6/3/2013 12:41:07 PM
Modified: 6/3/2013 1:22:27 PM

Gel Image



Assay Class: High Sensitivity DNA Assay
 Data Path: C:\...ents and Settings\Bioanalyzer\2013-06-03\2013-06-03_001.xad

Created: 6/3/2013 12:41:07 PM
 Modified: 6/3/2013 1:22:27 PM

Run Logbook

Description	Number	Source	Category	Sub Category	Time	Time Zone	User	Host
Run ended on port 1 (Number of wells acquired: 12)		Instrument	Run		6/3/2013 1:22:24 PM	(GMT --07:00) Pacific Standard Time	UC Davis	D8XSMGH1
Run started on port 1 (File: C:\Documents and Settings\Bioanalyzer\2013-06-03\2013-06-03_001.xad)		Instrument	Run		6/3/2013 12:41:13 PM	(GMT --07:00) Pacific Standard Time	UC Davis	D8XSMGH1
Product Number : G2938B		Instrument	Run		6/3/2013 12:41:13 PM	(GMT --07:00) Pacific Standard Time	UC Davis	D8XSMGH1
Name :		Instrument	Run		6/3/2013 12:41:13 PM	(GMT --07:00) Pacific Standard Time	UC Davis	D8XSMGH1
Vendor : Agilent Technologies		Instrument	Run		6/3/2013 12:41:13 PM	(GMT --07:00) Pacific Standard Time	UC Davis	D8XSMGH1
Serial# : DE13701086		Instrument	Run		6/3/2013 12:41:13 PM	(GMT --07:00) Pacific Standard Time	UC Davis	D8XSMGH1
Firmware : C.01.069		Instrument	Run		6/3/2013 12:41:13 PM	(GMT --07:00) Pacific Standard Time	UC Davis	D8XSMGH1
Cartridge : Electrode		Instrument	Run		6/3/2013 12:41:13 PM	(GMT --07:00) Pacific Standard Time	UC Davis	D8XSMGH1