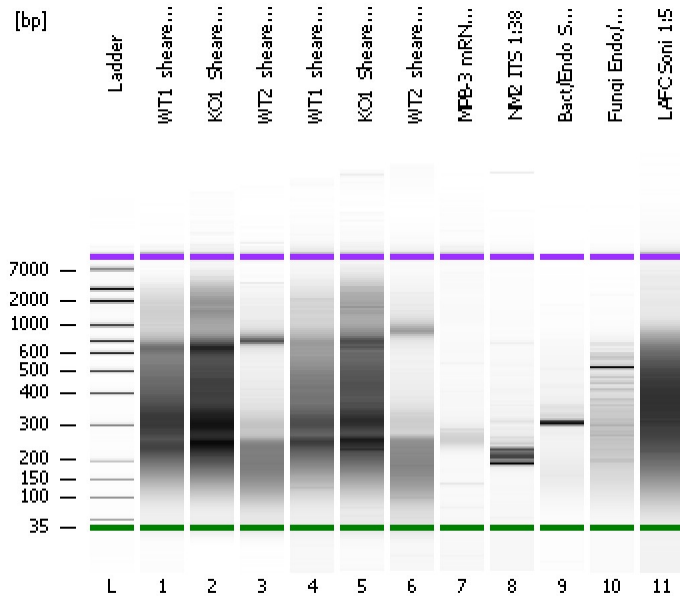


Assay Class: High Sensitivity DNA Assay
Data Path: C:\...ents and Settings\Bioanalyzer\2013-06-12\2013-06-12_004.xad

Created: 6/12/2013 1:40:53 PM
Modified: 6/12/2013 2:30:11 PM

Electrophoresis File Run Summary



Instrument Information:

Instrument Name: DE13701086 Firmware: C.01.069
Serial#: DE13701086 Type: G2938B

Assay Information:

Assay Origin Path: C:\Program Files\Agilent\2100 bioanalyzer\2100 expert\assays\dsDNA\High Sensitivity DNA.xsy
Assay Class: High Sensitivity DNA Assay
Version: 1.03
Assay Comments: Copyright © 2003-2010 Agilent Technologies

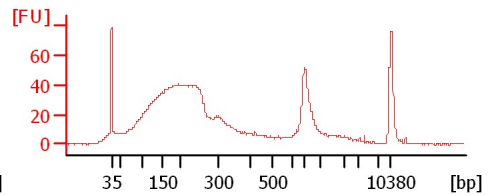
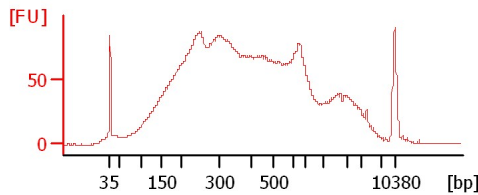
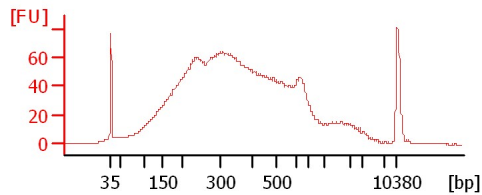
Chip Information:

Chip Lot #:
Reagent Kit Lot #:
Chip Comments:

WT1_sheared DNA

KO1_Sheared DNA

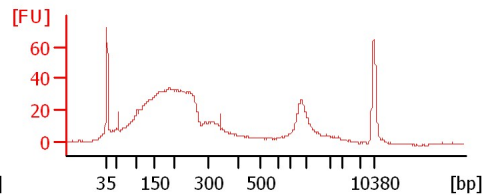
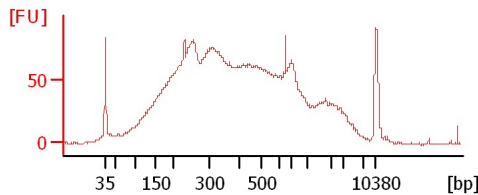
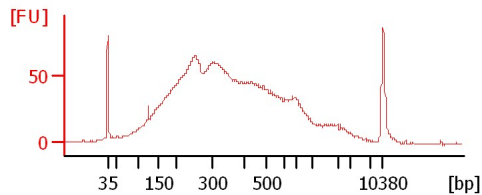
WT2_sheared DNA



WT1_sheared DNA

KO1_Sheared DNA

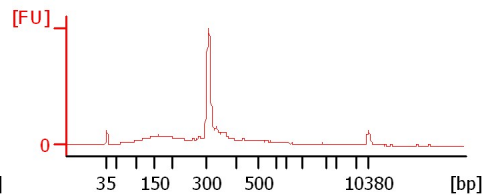
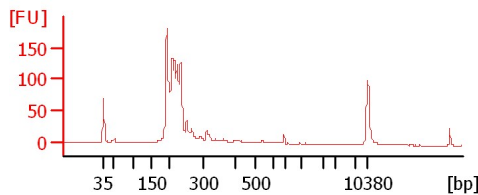
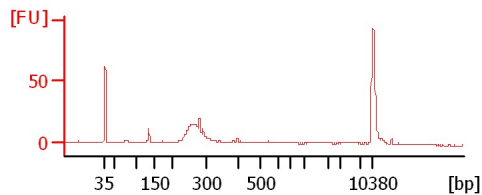
WT2_sheared DNA



MPB-3 mRNA Lib

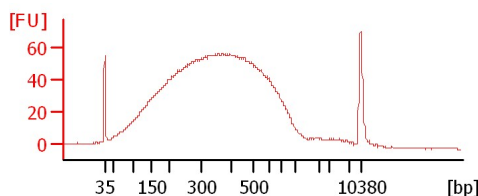
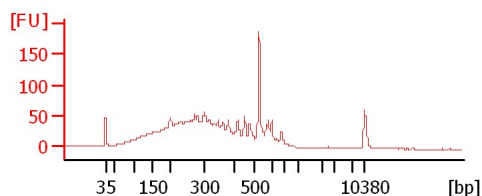
NM2 ITS 1:38

Bact/Endo Soni 1:2



Fungi Endo/Epi Soni

LAFC Soni 1:5



Assay Class: High Sensitivity DNA Assay
 Data Path: C:\...ents and Settings\Bioanalyzer\2013-06-12\2013-06-12_004.xad

Created: 6/12/2013 1:40:53 PM
 Modified: 6/12/2013 2:30:11 PM

Electrophoresis File Run Summary (Chip Summary)

Sample Name	Sample Comment	Rest. Digest	Status	Observation	Result Label	Result Color
WT1_sheared DNA		<input type="checkbox"/>	✓			
KO1_Sheared DNA		<input type="checkbox"/>	✓			
WT2_sheared DNA		<input type="checkbox"/>	✓			
WT1_sheared DNA		<input type="checkbox"/>	✓			
KO1_Sheared DNA		<input type="checkbox"/>	✓			
WT2_sheared DNA		<input type="checkbox"/>	✓			
MPB-3 mRNA Lib		<input type="checkbox"/>	✓			
NM2 ITS 1:38		<input type="checkbox"/>	✓			
Bact/Endo Soni 1:2		<input type="checkbox"/>	✓			
Fungi Endo/Epi Soni		<input type="checkbox"/>	✓			
LAFC Soni 1:5		<input type="checkbox"/>	✓			
Ladder		<input type="checkbox"/>	✓			

Chip Lot #

Reagent Kit Lot #

Chip Comments :

Assay Class: High Sensitivity DNA Assay
Data Path: C:\...ents and Settings\Bioanalyzer\2013-06-12\2013-06-12_004.xad

Created: 6/12/2013 1:40:53 PM
Modified: 6/12/2013 2:30:11 PM

Electrophoresis Assay Details

General Analysis Settings

Number of Available Sample and Ladder Wells (Max.) : 12
Minimum Visible Range [s] : 32
Maximum Visible Range [s] : 138
Start Analysis Time Range [s] : 33
End Analysis Time Range [s] : 137.5
Ladder Concentration [pg/μl] : 1950
Uses Standard Area for Ladder Fragments
Lower Marker Concentration [pg/μl] : 125
Upper Marker Concentration [pg/μl] : 75
Used Upper Marker for Quantitation
Standard Curve Fit is Point to Point
Show Data Aligned to Lower and Upper Marker

Integrator Settings

Integration Start Time [s] : 33.05
Integration End Time [s] : 137
Slope Threshold : 0.8
Height Threshold [FU] : 5
Area Threshold : 0.1
Width Threshold [s] : 0.6
Baseline Plateau [s] : 0.5

Filter Settings

Filter Width [s] : 0.5
Polynomial Order : 4

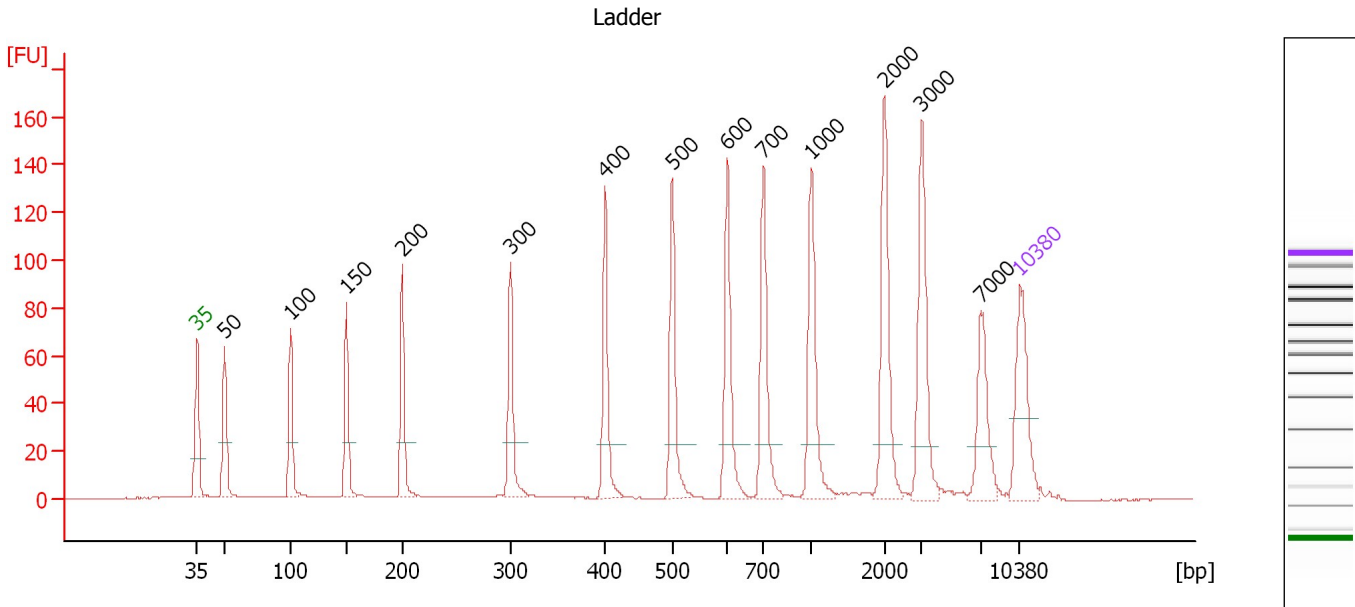
Ladder

Ladder Peak	Size	Area
1	35	160
2	50	210
3	100	208
4	150	221
5	200	242
6	300	270
7	400	305
8	500	306
9	600	336
10	700	321
11	1000	366
12	2000	413
13	3000	411
14	7000	400
15	10380	214

Assay Class: High Sensitivity DNA Assay
 Data Path: C:\...ents and Settings\Bioanalyzer\2013-06-12\2013-06-12_004.xad

Created: 6/12/2013 1:40:53 PM
 Modified: 6/12/2013 2:30:11 PM

Electropherogram Summary



Overall Results for Ladder

Noise: 0.1

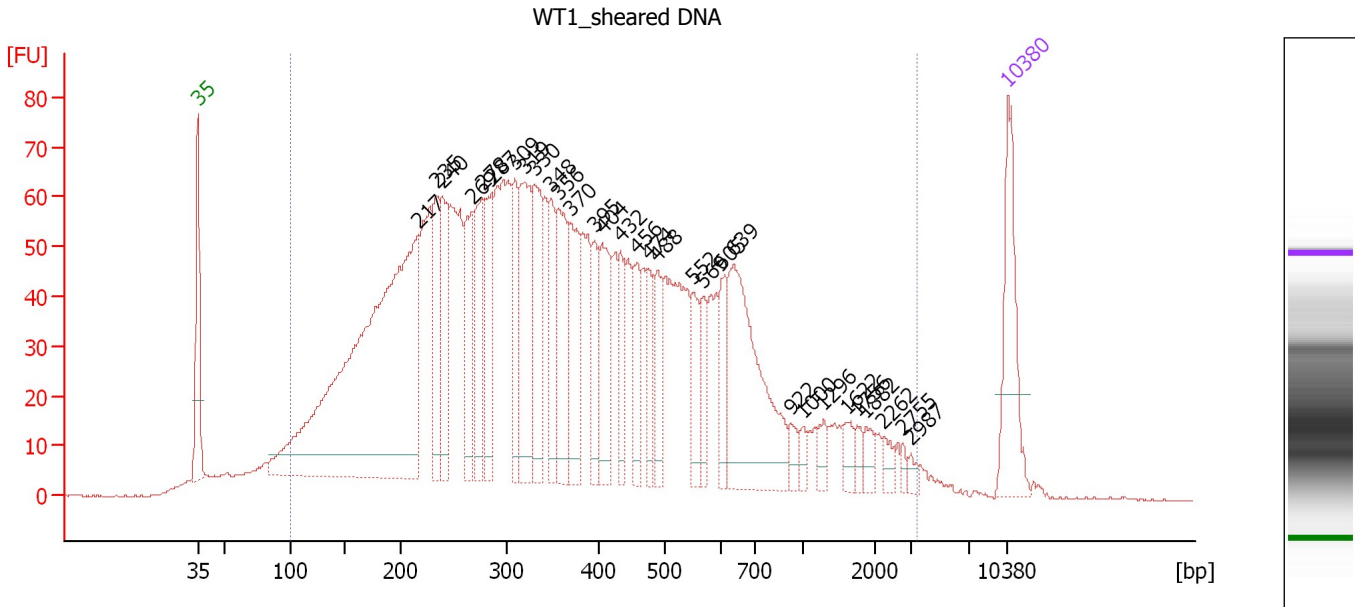
Peak table for Ladder

Peak	Size [bp]	Conc. [pg/μl]	Molarity [pmol/l]	Observations
1	35	125.00	5,411.3	Lower Marker
2	50	150.00	4,545.5	Ladder Peak
3	100	150.00	2,272.7	Ladder Peak
4	150	150.00	1,515.2	Ladder Peak
5	200	150.00	1,136.4	Ladder Peak
6	300	150.00	757.6	Ladder Peak
7	400	150.00	568.2	Ladder Peak
8	500	150.00	454.5	Ladder Peak
9	600	150.00	378.8	Ladder Peak
10	700	150.00	324.7	Ladder Peak
11	1,000	150.00	227.3	Ladder Peak
12	2,000	150.00	113.6	Ladder Peak
13	3,000	150.00	75.8	Ladder Peak
14	7,000	150.00	32.5	Ladder Peak
15	10,380	75.00	10.9	Upper Marker

Assay Class: High Sensitivity DNA Assay
 Data Path: C:\...ents and Settings\Bioanalyzer\2013-06-12\2013-06-12_004.xad

Created: 6/12/2013 1:40:53 PM
 Modified: 6/12/2013 2:30:11 PM

Electropherogram Summary Continued ...



Overall Results for sample 1 : WT1_sheared DNA

Number of peaks found: 31 Corr. Area 1: 2,881.3
 Noise: 0.2

Peak table for sample 1 : WT1_sheared DNA

Peak	Size [bp]	Conc. [pg/μl]	Molarity [pmol/l]	Observations
1	35	125.00	5,411.3	Lower Marker
2	217	800.21	5,587.1	
3	235	90.78	586.5	
4	240	108.34	683.9	
5	269	95.31	537.8	
6	278	103.41	564.5	
7	287	86.62	458.0	
8	309	74.58	365.4	
9	319	133.80	635.5	
10	330	112.38	516.1	
11	348	78.03	340.0	
12	356	101.50	431.6	
13	370	93.59	383.7	
14	395	49.16	188.7	
15	404	80.26	301.0	
16	432	45.11	158.1	
17	456	49.08	163.0	
18	474	40.92	130.8	
19	488	43.07	133.8	
20	552	43.13	118.5	
21	569	31.79	84.6	
22	605	41.11	102.9	
23	639	194.40	461.2	
24	922	12.48	20.5	
25	1,000	10.35	15.7	
26	1,296	12.48	14.6	

Assay Class: High Sensitivity DNA Assay
 Data Path: C:\...ents and Settings\Bioanalyzer\2013-06-12\2013-06-12_004.xad

Created: 6/12/2013 1:40:53 PM
 Modified: 6/12/2013 2:30:11 PM

Electropherogram Summary Continued ...

... Peak table for sample 1 : WT1 sheared DNA

Peak	Size [bp]	Conc. [pg/μl]	Molarity [pmol/l]	Observations
27	1,622	13.95	13.0	
28	1,756	9.86	8.5	
29	1,882	12.73	10.3	
30	2,262	9.28	6.2	
31	2,755	4.74	2.6	
32	2,987	5.87	3.0	
33	▶ 10,380	75.00	10.9	Upper Marker

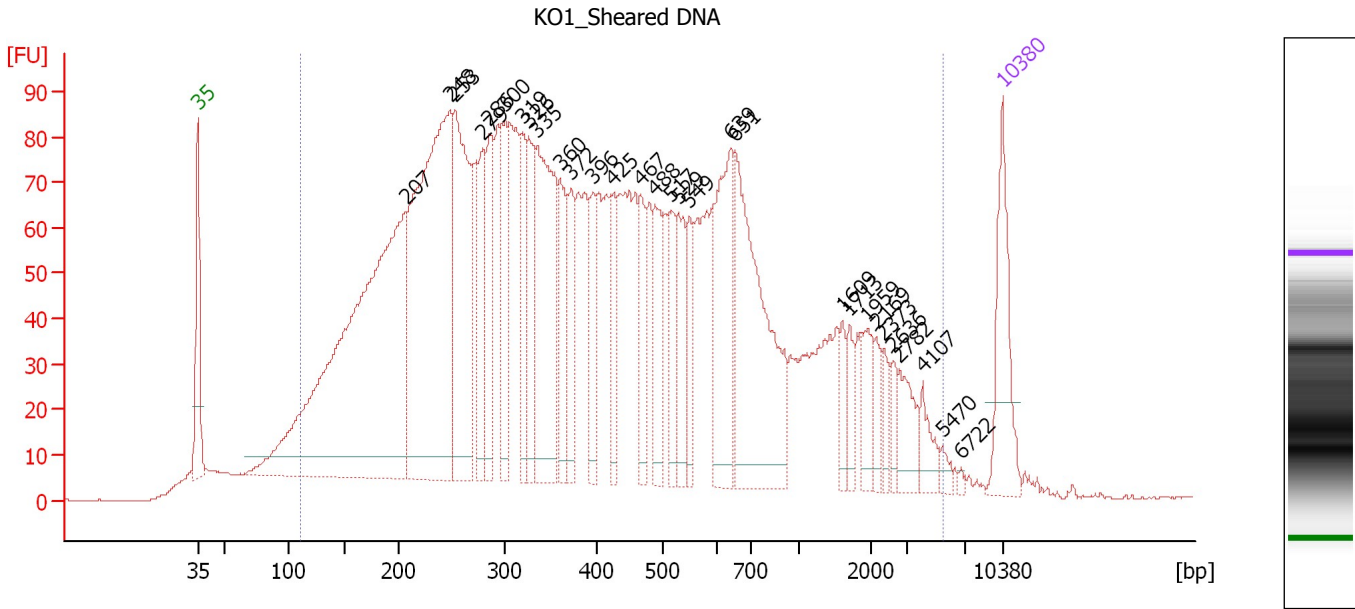
Region table for sample 1 : WT1 sheared DNA

From [bp]	To [bp]	Average Size [bp]	Molarity [pmol/l]	Conc. [pg/μl]	Corr. Area	% of Total	Size distribution in CV [%]	Color
101	3,406	460	22,160.4	4,052.38	2,881.3	96	89.2	■

Assay Class: High Sensitivity DNA Assay
 Data Path: C:\...ents and Settings\Bioanalyzer\2013-06-12\2013-06-12_004.xad

Created: 6/12/2013 1:40:53 PM
 Modified: 6/12/2013 2:30:11 PM

Electropherogram Summary Continued ...



Overall Results for sample 2 : KO1_Sheared DNA

Number of peaks found: 30 Corr. Area 1: 4,133.9
 Noise: 0.1

Peak table for sample 2 : KO1_Sheared DNA

Peak	Size [bp]	Conc. [pg/μl]	Molarity [pmol/l]	Observations
1	35	125.00	5,411.3	Lower Marker
2	207	881.96	6,466.1	
3	248	627.19	3,825.0	
4	253	276.10	1,650.4	
5	279	108.01	586.2	
6	286	104.15	552.4	
7	300	91.45	461.4	
8	319	84.53	401.0	
9	326	94.19	438.1	
10	335	241.74	1,093.4	
11	360	85.77	361.2	
12	372	72.23	294.2	
13	396	63.45	242.7	
14	425	57.54	205.3	
15	467	58.83	191.0	
16	488	76.27	236.9	
17	517	49.99	146.6	
18	529	70.17	201.2	
19	549	46.19	127.4	
20	639	140.46	333.3	
21	651	263.55	613.6	
22	1,609	19.70	18.6	
23	1,713	20.29	17.9	
24	1,959	33.53	25.9	
25	2,169	18.19	12.7	
26	2,373	16.46	10.5	

Assay Class: High Sensitivity DNA Assay
 Data Path: C:\...ents and Settings\Bioanalyzer\2013-06-12\2013-06-12_004.xad


Created: 6/12/2013 1:40:53 PM
 Modified: 6/12/2013 2:30:11 PM

Electropherogram Summary Continued ...

... Peak table for sample 2 : KO1 Sheared DNA

Peak	Size [bp]	Conc. [pg/μl]	Molarity [pmol/l]	Observations
27	2,636	14.30	8.2	
28	2,782	36.52	19.9	
29	4,107	21.15	7.8	
30	5,470	8.25	2.3	
31	6,722	2.49	0.6	
32	10,380	75.00	10.9	Upper Marker

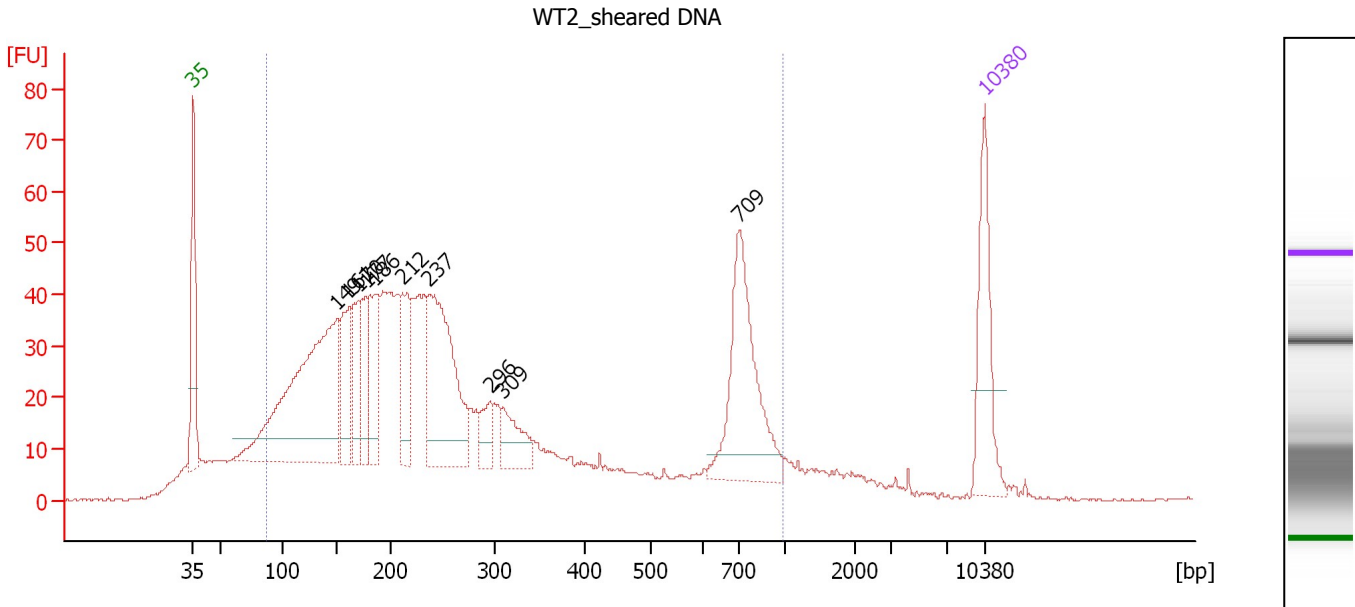
Region table for sample 2 : KO1 Sheared DNA

From [bp]	To [bp]	Average Size [bp]	Molarity [pmol/l]	Conc. [pg/μl]	Corr. Area	% of Total	Size distribution in CV [%]	Color
111	5,479	602	26,709.4	5,180.75	4,133.9	95	100.0	

Assay Class: High Sensitivity DNA Assay
 Data Path: C:\...ents and Settings\Bioanalyzer\2013-06-12\2013-06-12_004.xad

Created: 6/12/2013 1:40:53 PM
 Modified: 6/12/2013 2:30:11 PM

Electropherogram Summary Continued ...



Overall Results for sample 3 : WT2_sheared DNA

Number of peaks found: 10 Corr. Area 1: 1,427.7
 Noise: 0.2

Peak table for sample 3 : WT2_sheared DNA

Peak	Size [bp]	Conc. [pg/μl]	Molarity [pmol/l]	Observations
1	35	125.00	5,411.3	Lower Marker
2	149	445.29	4,517.1	
3	161	91.35	858.4	
4	170	75.34	672.8	
5	177	61.49	526.1	
6	186	98.47	804.2	
7	212	82.69	592.0	
8	237	230.33	1,474.2	
9	296	31.61	162.0	
10	309	52.22	256.0	
11	709	174.39	372.7	
12	10,380	75.00	10.9	Upper Marker

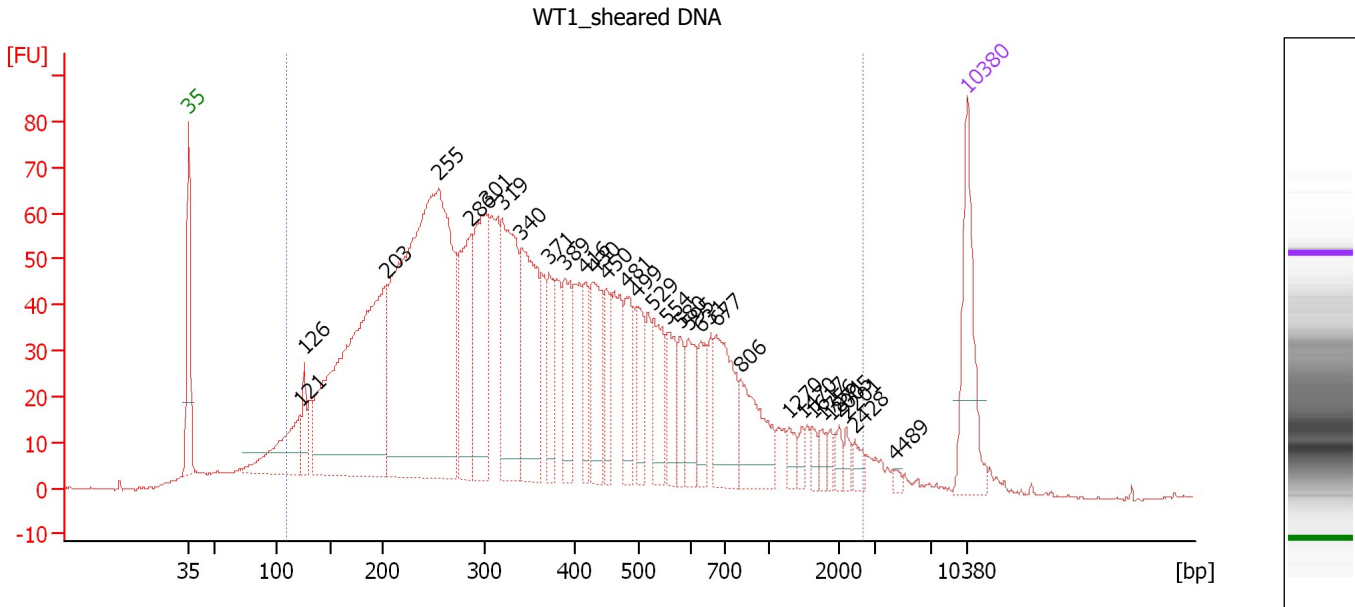
Region table for sample 3 : WT2_sheared DNA

From [bp]	To [bp]	Average Size [bp]	Molarity [pmol/l]	Conc. [pg/μl]	Corr. Area	% of Total	Size distribution in CV [%]	Color
87	988	314	18,374.1	2,351.78	1,427.7	87	68.8	Blue

Assay Class: High Sensitivity DNA Assay
 Data Path: C:\...ents and Settings\Bioanalyzer\2013-06-12\2013-06-12_004.xad

Created: 6/12/2013 1:40:53 PM
 Modified: 6/12/2013 2:30:11 PM

Electropherogram Summary Continued ...



Overall Results for sample 4 : WT1_sheared DNA

Number of peaks found: 31 Corr. Area 1: 2,646.1
 Noise: 0.2

Peak table for sample 4 : WT1_sheared DNA

Peak	Size [bp]	Conc. [pg/µl]	Molarity [pmol/l]	Observations
1	35	125.00	5,411.3	Lower Marker
2	121	103.14	1,287.9	
3	126	38.43	462.6	
4	203	503.30	3,757.0	
5	255	754.26	4,490.2	
6	286	132.77	704.0	
7	301	178.87	900.5	
8	319	179.01	850.5	
9	340	164.87	733.9	
10	371	57.97	236.5	
11	389	68.47	266.9	
12	416	42.49	154.7	
13	430	80.12	282.1	
14	450	43.20	145.6	
15	481	51.77	162.9	
16	499	45.69	138.7	
17	529	58.57	167.6	
18	554	44.71	122.3	
19	580	27.71	72.4	
20	595	45.74	116.4	
21	631	34.23	82.2	
22	677	84.38	189.0	
23	806	70.04	131.6	
24	1,270	12.83	15.3	
25	1,470	8.49	8.8	
26	1,617	8.95	8.4	

Assay Class: High Sensitivity DNA Assay
 Data Path: C:\...ents and Settings\Bioanalyzer\2013-06-12\2013-06-12_004.xad


Created: 6/12/2013 1:40:53 PM
 Modified: 6/12/2013 2:30:11 PM

Electropherogram Summary Continued ...

... Peak table for sample 4 : WT1 sheared DNA

Peak	Size [bp]	Conc. [pg/μl]	Molarity [pmol/l]	Observations
27	1,756	8.54	7.4	
28	1,871	7.20	5.8	
29	2,005	8.02	6.1	
30	2,201	7.84	5.4	
31	2,428	9.59	6.0	
32	4,489	3.44	1.2	
33	▶ 10,380	75.00	10.9	Upper Marker

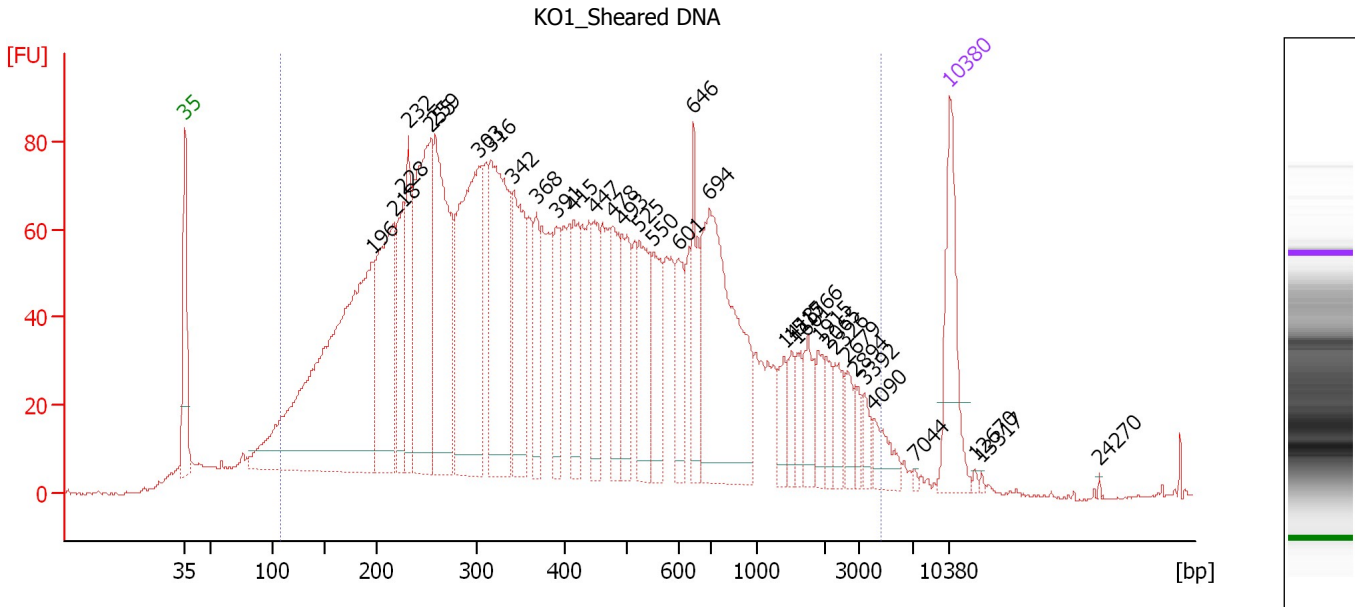
Region table for sample 4 : WT1 sheared DNA

From [bp]	To [bp]	Average Size [bp]	Molarity [pmol/l]	Conc. [pg/μl]	Corr. Area	% of Total	Size distribution in CV [%]	Color
110	2,695	448	19,528.7	3,573.16	2,646.1	95	82.3	

Assay Class: High Sensitivity DNA Assay
 Data Path: C:\...ents and Settings\Bioanalyzer\2013-06-12\2013-06-12_004.xad

Created: 6/12/2013 1:40:53 PM
 Modified: 6/12/2013 2:30:11 PM

Electropherogram Summary Continued ...



Overall Results for sample 5 : KO1_Sheared DNA

Number of peaks found: 35 Corr. Area 1: 3,706.2
 Noise: 0.4

Peak table for sample 5 : KO1_Sheared DNA

Peak	Size [bp]	Conc. [pg/μl]	Molarity [pmol/l]	Observations
1	35	125.00	5,411.3	Lower Marker
2	196	641.55	4,949.6	
3	218	223.66	1,554.7	
4	228	94.19	627.2	
5	232	92.44	603.0	
6	255	269.17	1,602.3	
7	259	257.18	1,505.9	
8	303	305.75	1,531.3	
9	316	251.76	1,207.6	
10	342	144.12	638.5	
11	368	57.47	236.5	
12	391	53.05	205.4	
13	415	64.85	236.8	
14	447	63.31	214.4	
15	478	71.83	227.6	
16	493	76.07	234.0	
17	525	80.19	231.3	
18	550	64.99	179.0	
19	601	50.81	128.1	
20	646	65.27	153.1	
21	694	263.92	576.1	
22	1,413	22.21	23.8	
23	1,515	18.19	18.2	
24	1,601	18.05	17.1	
25	1,766	29.47	25.3	
26	1,915	19.35	15.3	

Assay Class: High Sensitivity DNA Assay
 Data Path: C:\...ents and Settings\Bioanalyzer\2013-06-12\2013-06-12_004.xad


Created: 6/12/2013 1:40:53 PM
 Modified: 6/12/2013 2:30:11 PM

Electropherogram Summary Continued ...

... Peak table for sample 5 : KO1 Sheared DNA

Peak	Size [bp]	Conc. [pg/µl]	Molarity [pmol/l]	Observations
27	2,065	17.15	12.6	
28	2,326	21.75	14.2	
29	2,679	17.69	10.0	
30	2,894	11.44	6.0	
31	3,392	12.94	5.8	
32	4,090	23.17	8.6	
33	7,044	2.09	0.4	
34	10,380	75.00	10.9	Upper Marker
35	12,670	0.00	0.0	
36	13,317	0.00	0.0	
37	24,270	0.00	0.0	

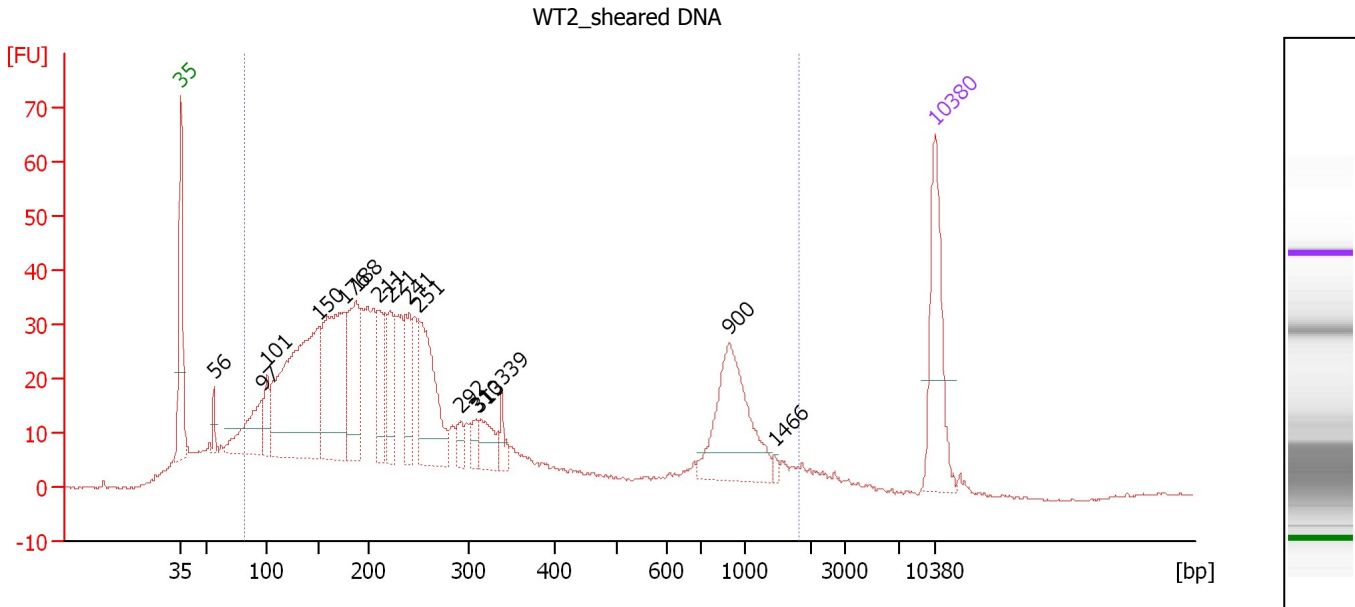
Region table for sample 5 : KO1 Sheared DNA

From [bp]	To [bp]	Average Size [bp]	Molarity [pmol/l]	Conc. [pg/µl]	Corr. Area	% of Total	Size distribution in CV [%]	Color
109	4,636	586	22,787.4	4,433.10	3,706.2	95	100.0	

Assay Class: High Sensitivity DNA Assay
 Data Path: C:\...ents and Settings\Bioanalyzer\2013-06-12\2013-06-12_004.xad

Created: 6/12/2013 1:40:53 PM
 Modified: 6/12/2013 2:30:11 PM

Electropherogram Summary Continued ...



Overall Results for sample 6 : WT2_sheared DNA

Number of peaks found: 16 Corr. Area 1: 1,173.1
 Noise: 0.2

Peak table for sample 6 : WT2_sheared DNA

Peak	Size [bp]	Conc. [pg/μl]	Molarity [pmol/l]	Observations
1	35	125.00	5,411.3	Lower Marker
2	56	14.09	378.9	
3	97	82.30	1,289.8	
4	101	34.27	515.1	
5	150	319.82	3,228.0	
6	176	206.55	1,782.6	
7	188	115.72	935.1	
8	211	57.02	410.0	
9	221	55.15	377.3	
10	241	55.39	348.5	
11	251	123.71	746.8	
12	292	15.42	79.9	
13	310	14.94	72.9	
14	313	33.56	162.6	
15	339	16.15	72.1	
16	900	119.35	200.9	
17	1,466	3.59	3.7	
18	10,380	75.00	10.9	Upper Marker

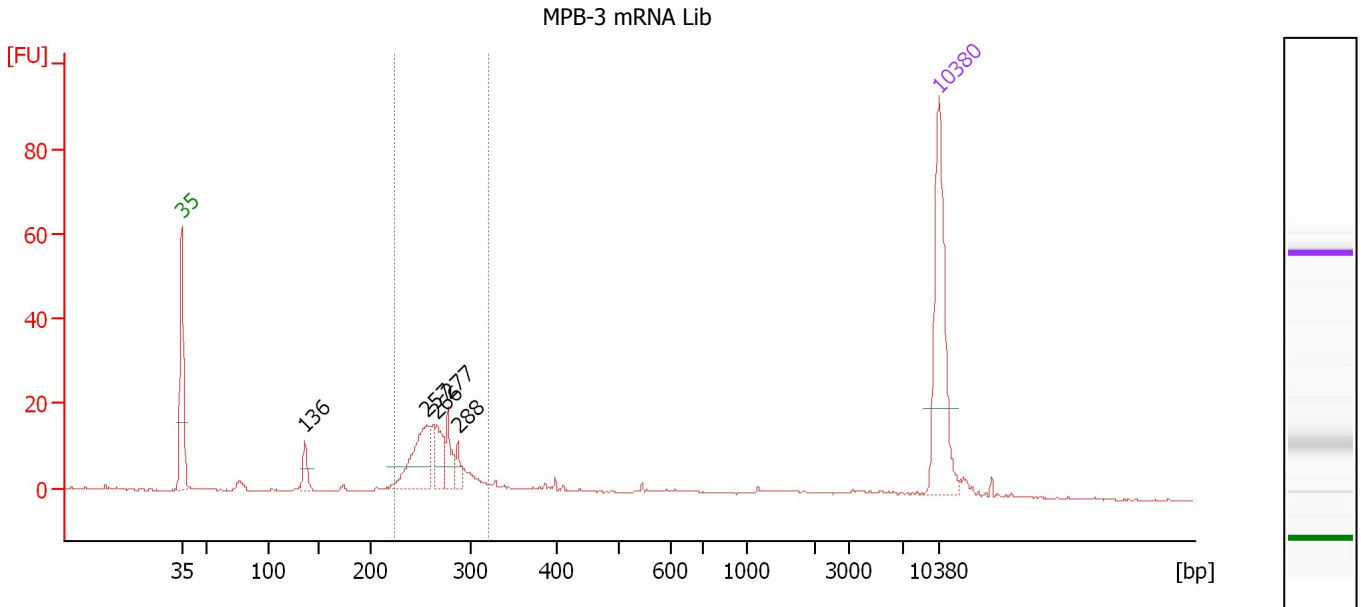
Region table for sample 6 : WT2_sheared DNA

From [bp]	To [bp]	Average Size [bp]	Molarity [pmol/l]	Conc. [pg/μl]	Corr. Area	% of Total	Size distribution in CV [%]	Color
83	1,817	350	16,902.2	2,084.47	1,173.1	89	92.1	Blue

Assay Class: High Sensitivity DNA Assay
 Data Path: C:\...ents and Settings\Bioanalyzer\2013-06-12\2013-06-12_004.xad

Created: 6/12/2013 1:40:53 PM
 Modified: 6/12/2013 2:30:11 PM

Electropherogram Summary Continued ...



Overall Results for sample 7 : MPB-3 mRNA Lib

Number of peaks found: 5 Corr. Area 1: 116.7
 Noise: 0.2

Peak table for sample 7 : MPB-3 mRNA Lib

Peak	Size [bp]	Conc. [pg/μl]	Molarity [pmol/l]	Observations
1	35	125.00	5,411.3	Lower Marker
2	136	16.05	178.6	
3	257	58.33	344.5	
4	266	24.36	138.9	
5	277	19.72	107.7	
6	288	10.06	53.0	
7	10,380	75.00	10.9	Upper Marker

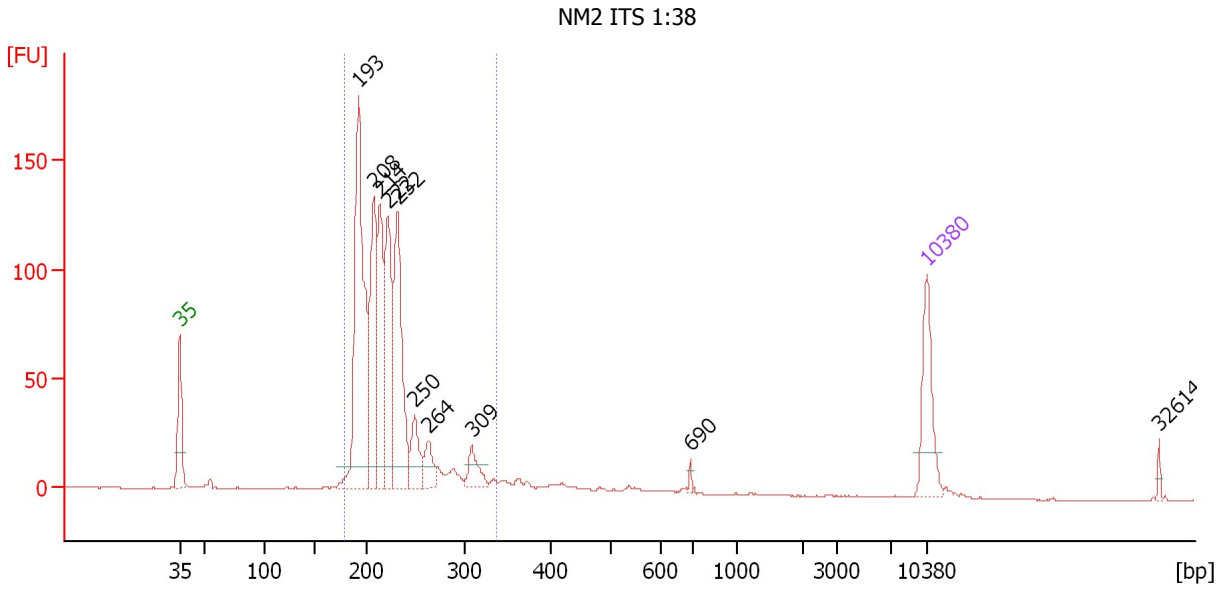
Region table for sample 7 : MPB-3 mRNA Lib

From [bp]	To [bp]	Average Size [bp]	Molarity [pmol/l]	Conc. [pg/μl]	Corr. Area	% of Total	Size distribution in CV [%]	Color
224	322	267	890.1	156.27	116.7	58	7.6	Blue

Assay Class: High Sensitivity DNA Assay
 Data Path: C:\...ents and Settings\Bioanalyzer\2013-06-12\2013-06-12_004.xad

Created: 6/12/2013 1:40:53 PM
 Modified: 6/12/2013 2:30:11 PM

Electropherogram Summary Continued ...



Setpoint Deviations for sample 8 : NM2 ITS 1:38

Height Threshold [FU] : 10

Overall Results for sample 8 : NM2 ITS 1:38

Number of peaks found: 10 Corr. Area 1: 1,066.8
 Noise: 0.1

Peak table for sample 8 : NM2 ITS 1:38

Peak	Size [bp]	Conc. [pg/μl]	Molarity [pmol/l]	Observations
1	35	125.00	5,411.3	Lower Marker
2	193	429.31	3,372.3	
3	208	217.05	1,578.3	
4	214	173.33	1,225.3	
5	222	194.27	1,323.0	
6	232	244.23	1,593.3	
7	250	58.21	353.4	
8	264	37.15	213.4	
9	309	36.07	177.0	
10	690	4.66	10.2	
11	10,380	75.00	10.9	Upper Marker
12	32,614	0.00	0.0	

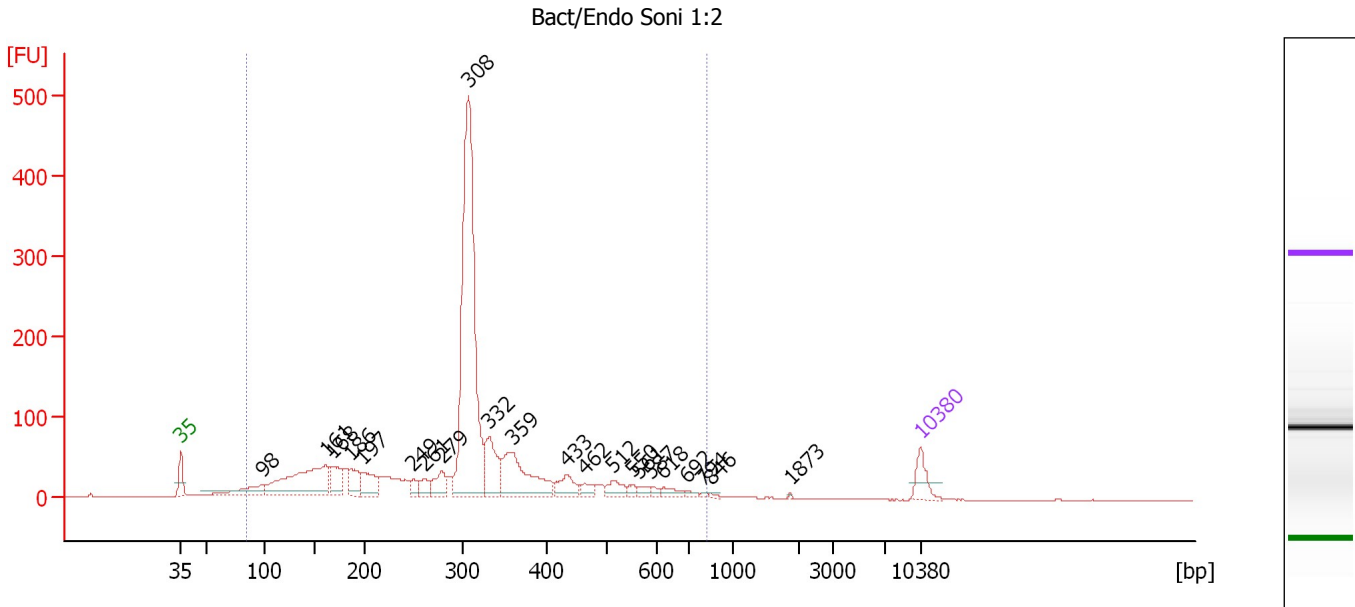
Region table for sample 8 : NM2 ITS 1:38

From [bp]	To [bp]	Average Size [bp]	Molarity [pmol/l]	Conc. [pg/μl]	Corr. Area	% of Total	Size distribution in CV [%]	Color
179	338	223	10,172.2	1,469.50	1,066.8	90	13.6	Blue

Assay Class: High Sensitivity DNA Assay
 Data Path: C:\...ents and Settings\Bioanalyzer\2013-06-12\2013-06-12_004.xad

Created: 6/12/2013 1:40:53 PM
 Modified: 6/12/2013 2:30:11 PM

Electropherogram Summary Continued ...



Overall Results for sample 9 : Bact/Endo Soni 1:2

Number of peaks found: 22 Corr. Area 1: 2,524.7
 Noise: 0.2

Peak table for sample 9 : Bact/Endo Soni 1:2

Peak	Size [bp]	Conc. [pg/µl]	Molarity [pmol/l]	Observations
1	35	125.00	5,411.3	Lower Marker
2	98	159.84	2,481.4	
3	161	622.73	5,869.3	
4	168	155.15	1,397.8	
5	186	127.50	1,040.5	
6	197	165.31	1,272.8	
7	249	42.38	257.6	
8	261	61.69	358.4	
9	279	113.90	618.8	
10	308	1,774.41	8,733.9	
11	332	233.26	1,065.5	
12	359	398.77	1,684.2	
13	433	100.00	350.0	
14	462	39.46	129.4	
15	512	66.45	196.7	
16	550	21.21	58.4	
17	561	29.78	80.4	
18	587	19.53	50.4	
19	618	38.45	94.3	
20	692	16.16	35.4	
21	794	6.68	12.8	
22	846	7.06	12.6	
23	1,873	2.63	2.1	
24	10,380	75.00	10.9	Upper Marker

Assay Class: High Sensitivity DNA Assay
Data Path: C:\...ents and Settings\Bioanalyzer\2013-06-12\2013-06-12_004.xad

Created: 6/12/2013 1:40:53 PM
Modified: 6/12/2013 2:30:11 PM

Electropherogram Summary Continued ...

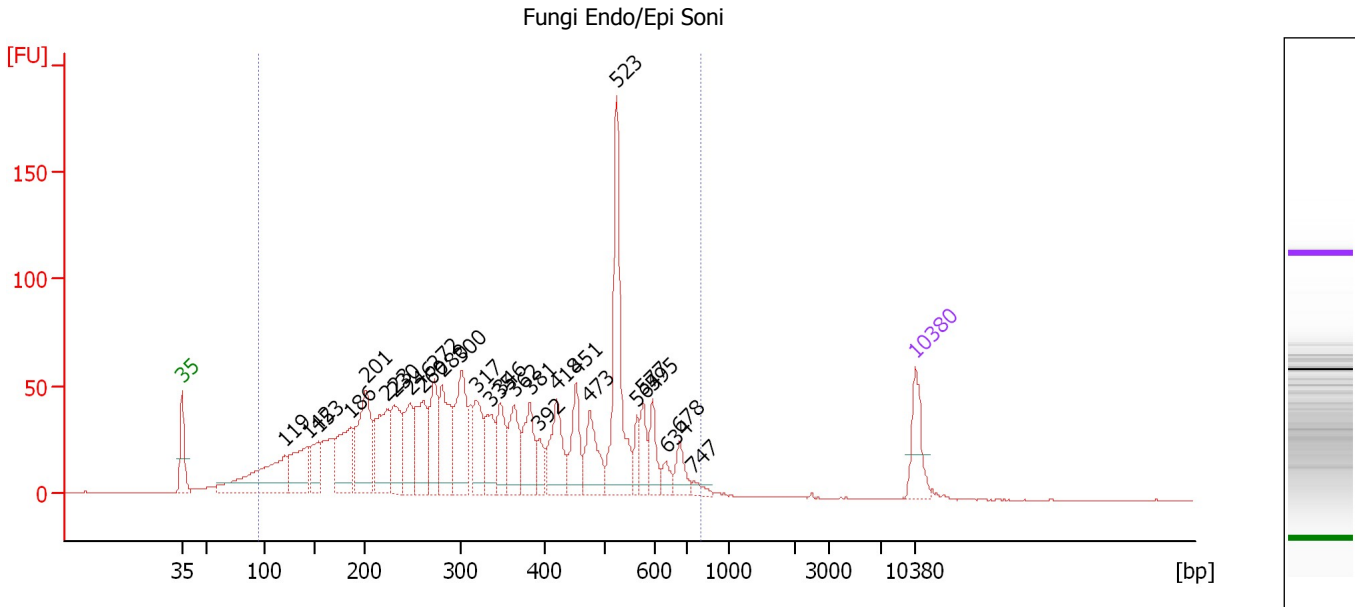
... Region table for sample 9 : Bact/Endo Soni 1:2

From [bp]	To [bp]	Average Size [bp]	Molarity [pmol/l]	Conc. [pg/μl]	Corr. Area	% of Total	Size distribution in CV [%]	Color
85	821	309	30,902.4	4,878.09	2,524.7	95	38.1	■

Assay Class: High Sensitivity DNA Assay
 Data Path: C:\...ents and Settings\Bioanalyzer\2013-06-12\2013-06-12_004.xad

Created: 6/12/2013 1:40:53 PM
 Modified: 6/12/2013 2:30:11 PM

Electropherogram Summary Continued ...



Overall Results for sample 10 : Fungi Endo/Epi Soni

Number of peaks found: 28 Corr. Area 1: 1,938.4
 Noise: 0.2

Peak table for sample 10 : Fungi Endo/Epi Soni

Peak	Size [bp]	Conc. [pg/µl]	Molarity [pmol/l]	Observations
1	35	125.00	5,411.3	Lower Marker
2	119	322.87	4,101.7	
3	142	186.30	1,984.4	
4	153	111.84	1,108.0	
5	186	198.54	1,621.4	
6	201	268.69	2,024.8	
7	223	211.35	1,434.9	
8	230	158.46	1,042.2	
9	246	139.58	858.3	
10	260	174.27	1,014.8	
11	272	153.81	857.3	
12	280	186.05	1,006.4	
13	300	206.25	1,041.6	
14	317	130.95	625.7	
15	335	107.13	484.7	
16	346	111.72	488.8	
17	362	121.39	507.9	
18	381	120.24	477.9	
19	392	47.55	183.8	
20	418	140.70	509.9	
21	451	105.94	355.9	
22	473	118.27	378.6	
23	523	330.55	958.2	
24	564	42.22	113.5	
25	577	57.80	151.9	
26	595	63.97	162.9	

Assay Class: High Sensitivity DNA Assay
 Data Path: C:\...ents and Settings\Bioanalyzer\2013-06-12\2013-06-12_004.xad


Created: 6/12/2013 1:40:53 PM
 Modified: 6/12/2013 2:30:11 PM

Electropherogram Summary Continued ...

... Peak table for sample 10 : Fungi Endo/Epi Soni

Peak	Size [bp]	Conc. [pg/μl]	Molarity [pmol/l]	Observations
27	634	29.67	70.9	
28	678	48.65	108.8	
29	747	17.10	34.7	
30	10,380	75.00	10.9	Upper Marker

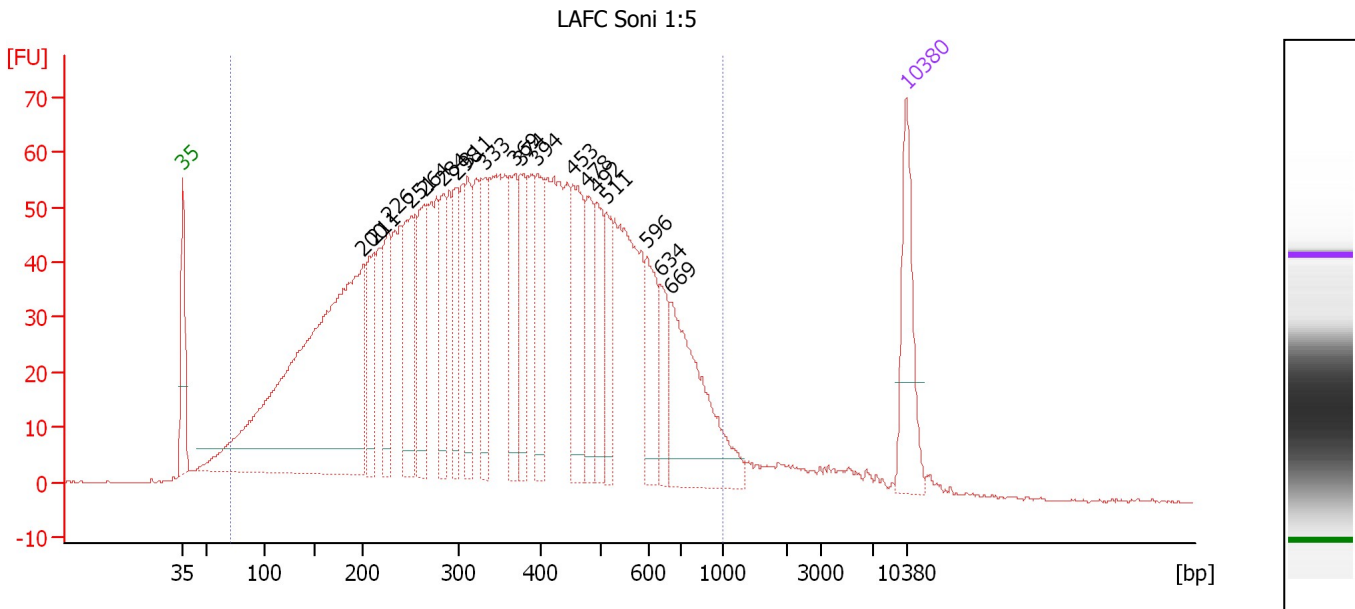
Region table for sample 10 : Fungi Endo/Epi Soni

From [bp]	To [bp]	Average Size [bp]	Molarity [pmol/l]	Conc. [pg/μl]	Corr. Area	% of Total	Size distribution in CV [%]	Color
95	797	346	24,861.3	4,125.35	1,938.4	96	42.5	

Assay Class: High Sensitivity DNA Assay
 Data Path: C:\...ents and Settings\Bioanalyzer\2013-06-12\2013-06-12_004.xad

Created: 6/12/2013 1:40:53 PM
 Modified: 6/12/2013 2:30:11 PM

Electropherogram Summary Continued ...



Overall Results for sample 11 : LAFc Soni 1:5

Number of peaks found: 19 Corr. Area 1: 2,658.5
 Noise: 0.2

Peak table for sample 11 : LAFc Soni 1:5

Peak	Size [bp]	Conc. [pg/μl]	Molarity [pmol/l]	Observations
1	35	125.00	5,411.3	Lower Marker
2	200	792.38	5,996.0	
3	211	92.65	663.9	
4	226	102.59	687.8	
5	251	127.80	772.5	
6	264	111.38	639.0	
7	284	76.49	407.7	
8	298	75.65	384.3	
9	311	81.07	395.1	
10	333	89.28	406.6	
11	369	88.49	363.7	
12	374	67.21	271.9	
13	394	78.78	302.7	
14	453	112.14	374.7	
15	478	72.63	230.3	
16	492	74.00	227.8	
17	511	62.31	184.6	
18	596	74.82	190.3	
19	634	47.46	113.4	
20	669	178.24	403.4	
21	10,380	75.00	10.9	Upper Marker

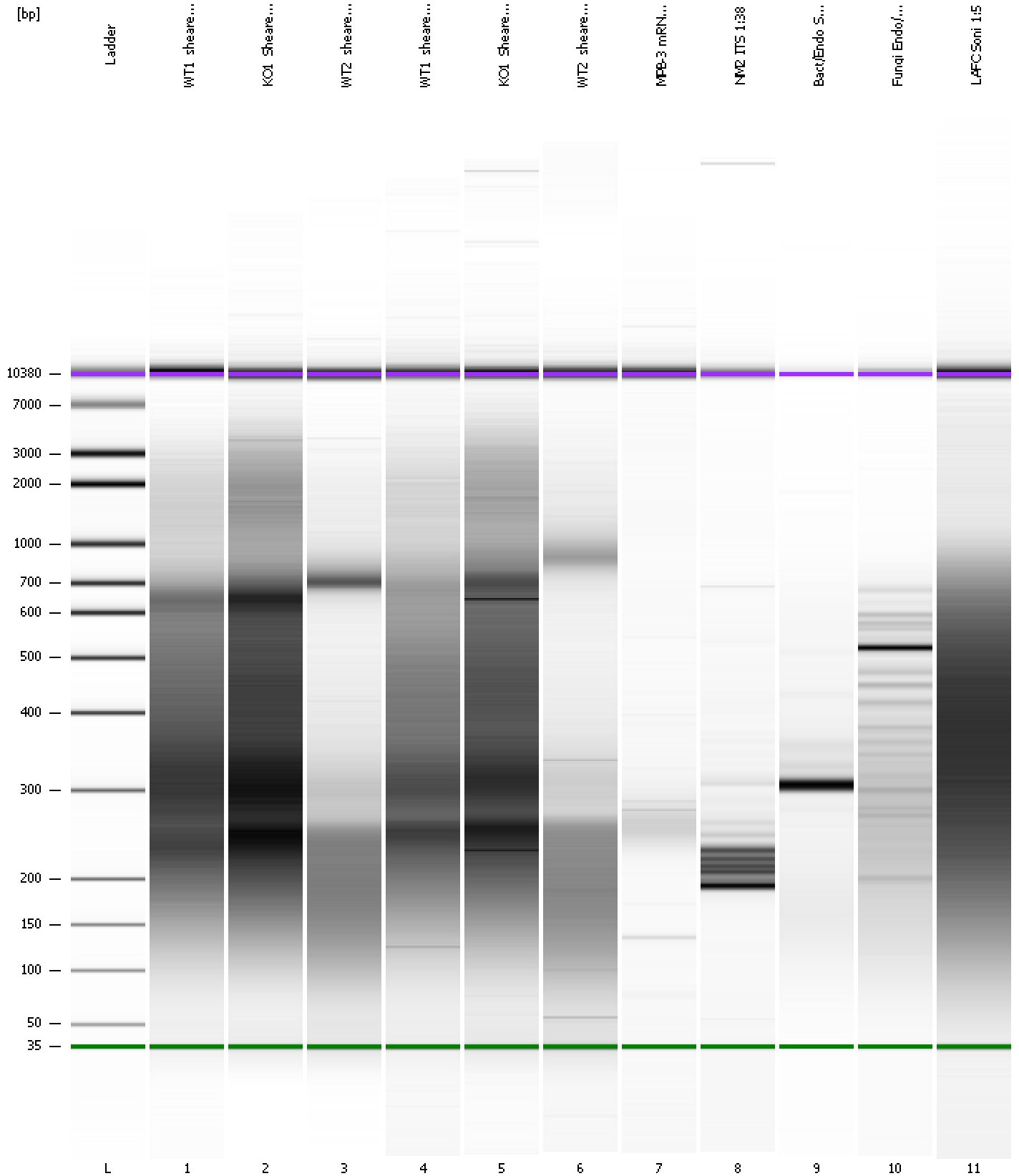
Region table for sample 11 : LAFc Soni 1:5

From [bp]	To [bp]	Average Size [bp]	Molarity [pmol/l]	Conc. [pg/μl]	Corr. Area	% of Total	Size distribution in CV [%]	Color
71	1,000	372	24,266.7	4,020.10	2,658.5	95	46.6	Blue

Assay Class: High Sensitivity DNA Assay
Data Path: C:\...ents and Settings\Bioanalyzer\2013-06-12\2013-06-12_004.xad

Created: 6/12/2013 1:40:53 PM
Modified: 6/12/2013 2:30:11 PM

Gel Image



Assay Class: High Sensitivity DNA Assay
 Data Path: C:\...ents and Settings\Bioanalyzer\2013-06-12\2013-06-12_004.xad

Created: 6/12/2013 1:40:53 PM
 Modified: 6/12/2013 2:30:11 PM

Run Logbook

Description	Number	Source	Category	Sub Category	Time	Time Zone	User	Host
Run ended on port 1 (Number of wells acquired: 12)		Instrument	Run		6/12/2013 2:21:23 PM	(GMT --07:00) Pacific Standard Time	UC Davis	D8XSMGH1
Run started on port 1 (File: C:\Documents and Settings\Bioanalyzer\2013-06-12\2013-06-12_004.xad)		Instrument	Run		6/12/2013 1:40:59 PM	(GMT --07:00) Pacific Standard Time	UC Davis	D8XSMGH1
Product Number : G2938B		Instrument	Run		6/12/2013 1:40:59 PM	(GMT --07:00) Pacific Standard Time	UC Davis	D8XSMGH1
Name :		Instrument	Run		6/12/2013 1:40:59 PM	(GMT --07:00) Pacific Standard Time	UC Davis	D8XSMGH1
Vendor : Agilent Technologies		Instrument	Run		6/12/2013 1:40:59 PM	(GMT --07:00) Pacific Standard Time	UC Davis	D8XSMGH1
Serial# : DE13701086		Instrument	Run		6/12/2013 1:40:59 PM	(GMT --07:00) Pacific Standard Time	UC Davis	D8XSMGH1
Firmware : C.01.069		Instrument	Run		6/12/2013 1:40:59 PM	(GMT --07:00) Pacific Standard Time	UC Davis	D8XSMGH1
Cartridge : Electrode		Instrument	Run		6/12/2013 1:40:59 PM	(GMT --07:00) Pacific Standard Time	UC Davis	D8XSMGH1