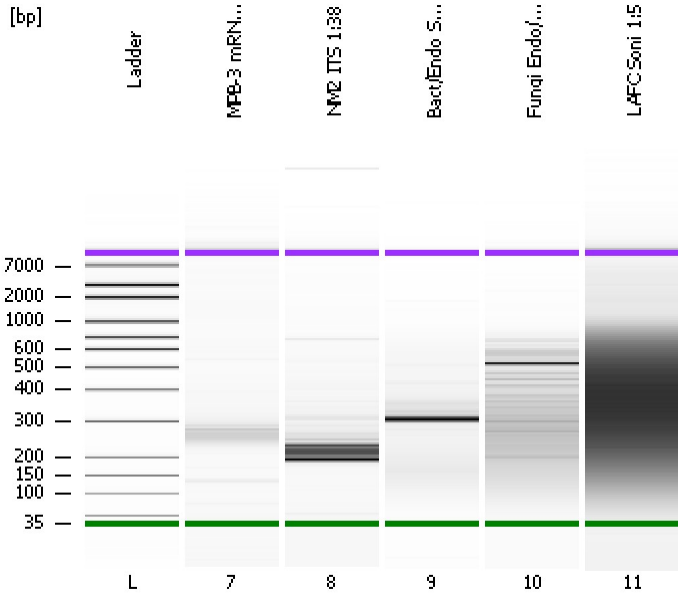


Assay Class: High Sensitivity DNA Assay
Data Path: C:\...ioanalyzer\2013-06-12\2013-06-12_004_mRNA_Lib_gDNA_Soni.xad

Created: 6/12/2013 1:40:53 PM
Modified: 6/12/2013 2:31:52 PM

Electrophoresis File Run Summary



Instrument Information:

Instrument Name: DE13701086 Firmware: C.01.069
Serial#: DE13701086 Type: G2938B

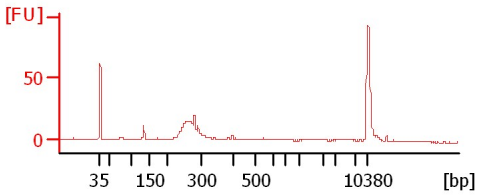
Assay Information:

Assay Origin Path: C:\Program Files\Agilent\2100 bioanalyzer\2100 expert\assays\dsDNA\High Sensitivity DNA.xsy
Assay Class: High Sensitivity DNA Assay
Version: 1.03
Assay Comments: Copyright © 2003-2010 Agilent Technologies

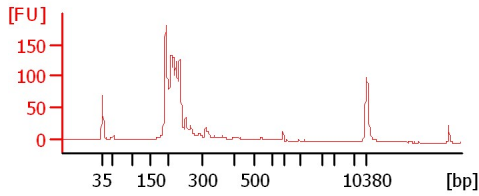
Chip Information:

Chip Lot #:
Reagent Kit Lot #:
Chip Comments:

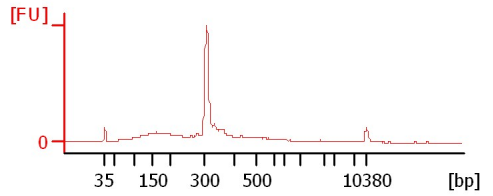
MPB-3 mRNA Lib



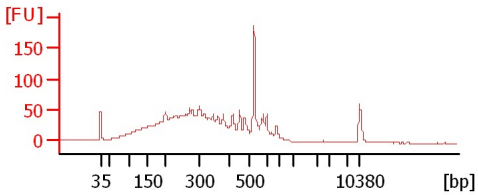
NM2 ITS 1:38



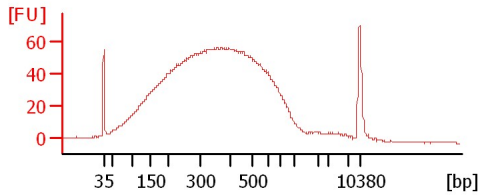
Bact/Endo Soni 1:2



Fungi Endo/Epi Soni



LAFC Soni 1:5



Assay Class: High Sensitivity DNA Assay
 Data Path: C:\...ioanalyzer\2013-06-12\2013-06-12_004_mRNA_Lib_gDNA_Soni.xad

Created: 6/12/2013 1:40:53 PM
 Modified: 6/12/2013 2:31:52 PM

Electrophoresis File Run Summary (Chip Summary)

Sample Name	Sample Comment	Rest. Digest	Status	Observation	Result Label	Result Color
MPB-3 mRNA Lib		<input type="checkbox"/>	✓			
NM2 ITS 1:38		<input type="checkbox"/>	✓			
Bact/Endo Soni 1:2		<input type="checkbox"/>	✓			
Fungi Endo/Epi Soni		<input type="checkbox"/>	✓			
LAFC Soni 1:5		<input type="checkbox"/>	✓			
Ladder		<input type="checkbox"/>	✓			

Chip Lot #

Reagent Kit Lot #

Chip Comments :

Assay Class: High Sensitivity DNA Assay
Data Path: C:\...ioanalyzer\2013-06-12\2013-06-12_004_mRNA_Lib_gDNA_Soni.xad

Created: 6/12/2013 1:40:53 PM
Modified: 6/12/2013 2:31:52 PM

Electrophoresis Assay Details

General Analysis Settings

Number of Available Sample and Ladder Wells (Max.) : 12
Minimum Visible Range [s] : 32
Maximum Visible Range [s] : 138
Start Analysis Time Range [s] : 33
End Analysis Time Range [s] : 137.5
Ladder Concentration [pg/μl] : 1950
Uses Standard Area for Ladder Fragments
Lower Marker Concentration [pg/μl] : 125
Upper Marker Concentration [pg/μl] : 75
Used Upper Marker for Quantitation
Standard Curve Fit is Point to Point
Show Data Aligned to Lower and Upper Marker

Integrator Settings

Integration Start Time [s] : 33.05
Integration End Time [s] : 137
Slope Threshold : 0.8
Height Threshold [FU] : 5
Area Threshold : 0.1
Width Threshold [s] : 0.6
Baseline Plateau [s] : 0.5

Filter Settings

Filter Width [s] : 0.5
Polynomial Order : 4

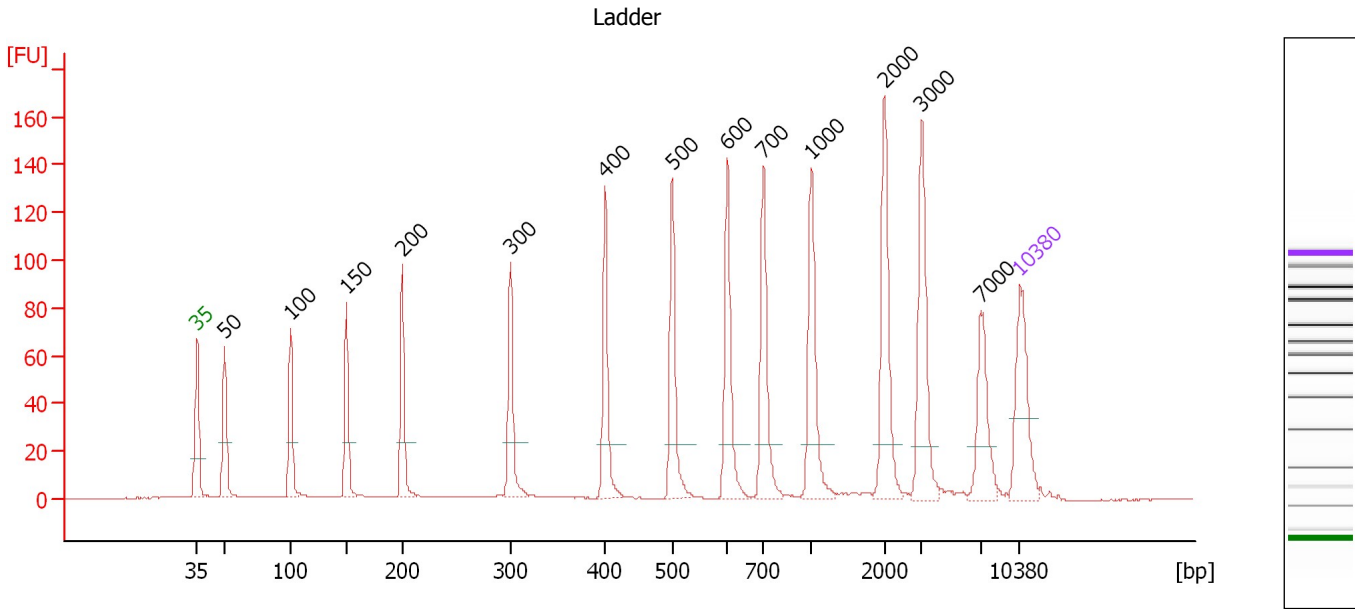
Ladder

Ladder Peak	Size	Area
1	35	160
2	50	210
3	100	208
4	150	221
5	200	242
6	300	270
7	400	305
8	500	306
9	600	336
10	700	321
11	1000	366
12	2000	413
13	3000	411
14	7000	400
15	10380	214

Assay Class: High Sensitivity DNA Assay
 Data Path: C:\...ioanalyzer\2013-06-12\2013-06-12_004_mRNA_Lib_gDNA_Soni.xad

Created: 6/12/2013 1:40:53 PM
 Modified: 6/12/2013 2:31:52 PM

Electropherogram Summary



Overall Results for Ladder

Noise: 0.1

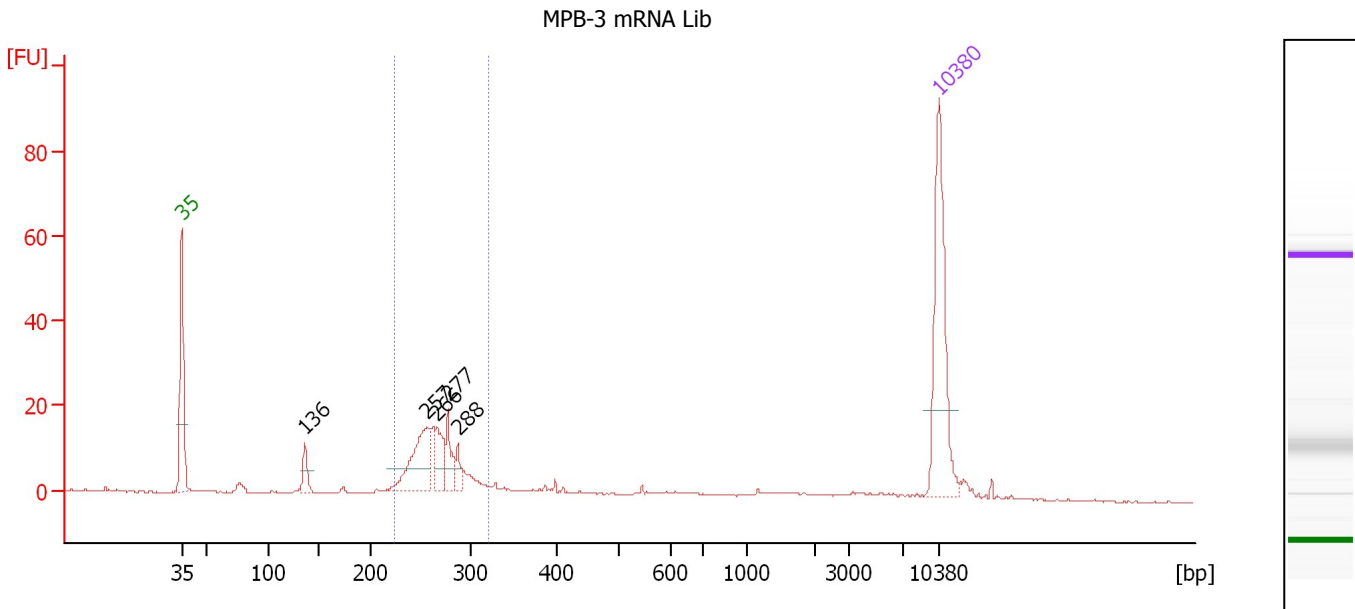
Peak table for Ladder

Peak	Size [bp]	Conc. [pg/μl]	Molarity [pmol/l]	Observations
1	35	125.00	5,411.3	Lower Marker
2	50	150.00	4,545.5	Ladder Peak
3	100	150.00	2,272.7	Ladder Peak
4	150	150.00	1,515.2	Ladder Peak
5	200	150.00	1,136.4	Ladder Peak
6	300	150.00	757.6	Ladder Peak
7	400	150.00	568.2	Ladder Peak
8	500	150.00	454.5	Ladder Peak
9	600	150.00	378.8	Ladder Peak
10	700	150.00	324.7	Ladder Peak
11	1,000	150.00	227.3	Ladder Peak
12	2,000	150.00	113.6	Ladder Peak
13	3,000	150.00	75.8	Ladder Peak
14	7,000	150.00	32.5	Ladder Peak
15	10,380	75.00	10.9	Upper Marker

Assay Class: High Sensitivity DNA Assay
 Data Path: C:\...ioanalyzer\2013-06-12\2013-06-12_004_mRNA_Lib_gDNA_Soni.xad

Created: 6/12/2013 1:40:53 PM
 Modified: 6/12/2013 2:31:52 PM

Electropherogram Summary Continued ...



Overall Results for sample 7 : MPB-3 mRNA Lib

Number of peaks found: 5 Corr. Area 1: 116.7
 Noise: 0.2

Peak table for sample 7 : MPB-3 mRNA Lib

Peak	Size [bp]	Conc. [pg/μl]	Molarity [pmol/l]	Observations
1	35	125.00	5,411.3	Lower Marker
2	136	16.05	178.6	
3	257	58.33	344.5	
4	266	24.36	138.9	
5	277	19.72	107.7	
6	288	10.06	53.0	
7	10,380	75.00	10.9	Upper Marker

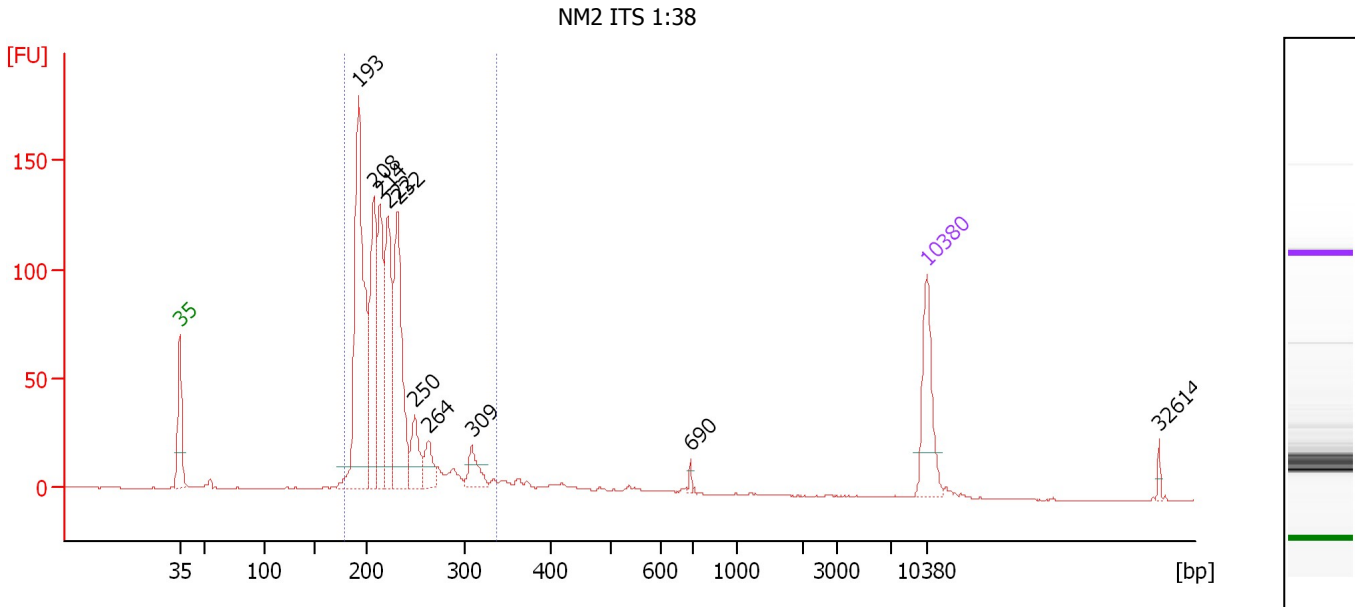
Region table for sample 7 : MPB-3 mRNA Lib

From [bp]	To [bp]	Average Size [bp]	Molarity [pmol/l]	Conc. [pg/μl]	Corr. Area	% of Total	Size distribution in CV [%]	Color
224	322	267	890.1	156.27	116.7	58	7.6	Blue

Assay Class: High Sensitivity DNA Assay
 Data Path: C:\...ioanalyzer\2013-06-12\2013-06-12_004_mRNA_Lib_gDNA_Soni.xad

Created: 6/12/2013 1:40:53 PM
 Modified: 6/12/2013 2:31:52 PM

Electropherogram Summary Continued ...



Setpoint Deviations for sample 8 : NM2 ITS 1:38

Height Threshold [FU] : 10

Overall Results for sample 8 : NM2 ITS 1:38

Number of peaks found: 10 Corr. Area 1: 1,066.8
 Noise: 0.1

Peak table for sample 8 : NM2 ITS 1:38

Peak	Size [bp]	Conc. [pg/μl]	Molarity [pmol/l]	Observations
1	35	125.00	5,411.3	Lower Marker
2	193	429.31	3,372.3	
3	208	217.05	1,578.3	
4	214	173.33	1,225.3	
5	222	194.27	1,323.0	
6	232	244.23	1,593.3	
7	250	58.21	353.4	
8	264	37.15	213.4	
9	309	36.07	177.0	
10	690	4.66	10.2	
11	10,380	75.00	10.9	Upper Marker
12	32,614	0.00	0.0	

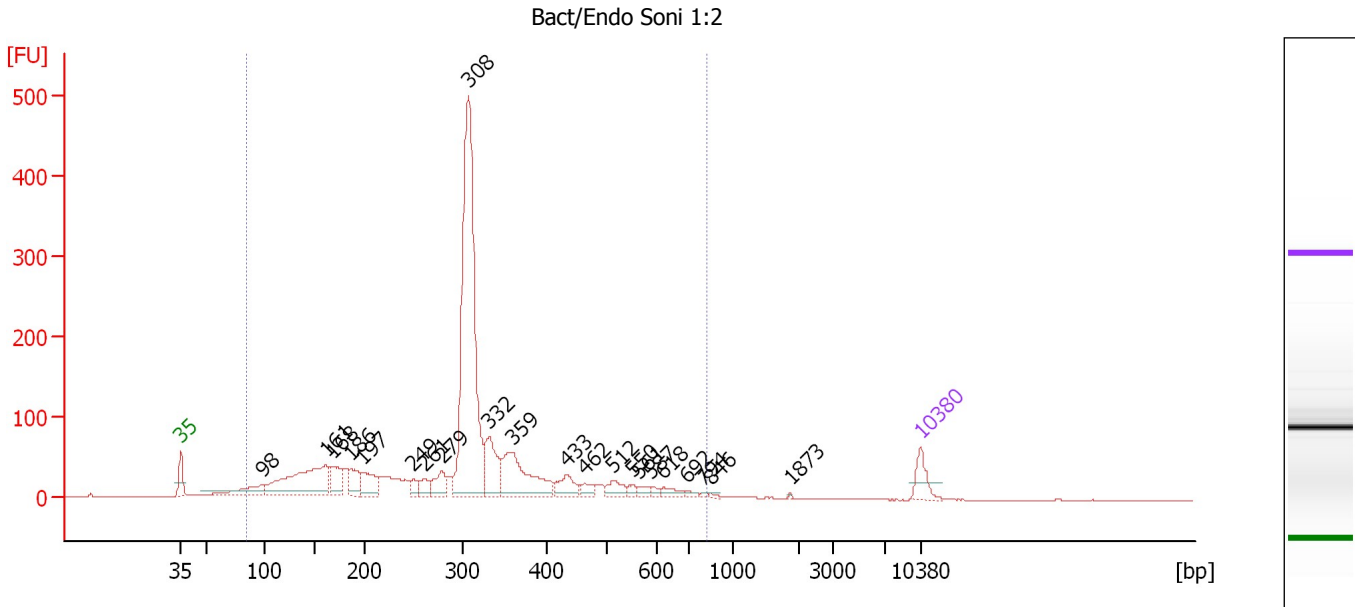
Region table for sample 8 : NM2 ITS 1:38

From [bp]	To [bp]	Average Size [bp]	Molarity [pmol/l]	Conc. [pg/μl]	Corr. Area	% of Total	Size distribution in CV [%]	Color
179	338	223	10,172.2	1,469.50	1,066.8	90	13.6	Blue

Assay Class: High Sensitivity DNA Assay
 Data Path: C:\...ioanalyzer\2013-06-12\2013-06-12_004_mRNA_Lib_gDNA_Soni.xad

Created: 6/12/2013 1:40:53 PM
 Modified: 6/12/2013 2:31:52 PM

Electropherogram Summary Continued ...



Overall Results for sample 9 : Bact/Endo Soni 1:2

Number of peaks found: 22 Corr. Area 1: 2,524.7
 Noise: 0.2

Peak table for sample 9 : Bact/Endo Soni 1:2

Peak	Size [bp]	Conc. [pg/μl]	Molarity [pmol/l]	Observations
1	35	125.00	5,411.3	Lower Marker
2	98	159.84	2,481.4	
3	161	622.73	5,869.3	
4	168	155.15	1,397.8	
5	186	127.50	1,040.5	
6	197	165.31	1,272.8	
7	249	42.38	257.6	
8	261	61.69	358.4	
9	279	113.90	618.8	
10	308	1,774.41	8,733.9	
11	332	233.26	1,065.5	
12	359	398.77	1,684.2	
13	433	100.00	350.0	
14	462	39.46	129.4	
15	512	66.45	196.7	
16	550	21.21	58.4	
17	561	29.78	80.4	
18	587	19.53	50.4	
19	618	38.45	94.3	
20	692	16.16	35.4	
21	794	6.68	12.8	
22	846	7.06	12.6	
23	1,873	2.63	2.1	
24	10,380	75.00	10.9	Upper Marker

Assay Class: High Sensitivity DNA Assay
Data Path: C:\...ioanalyzer\2013-06-12\2013-06-12_004_mRNA_Lib_gDNA_Soni.xad

Created: 6/12/2013 1:40:53 PM
Modified: 6/12/2013 2:31:52 PM

Electropherogram Summary Continued ...

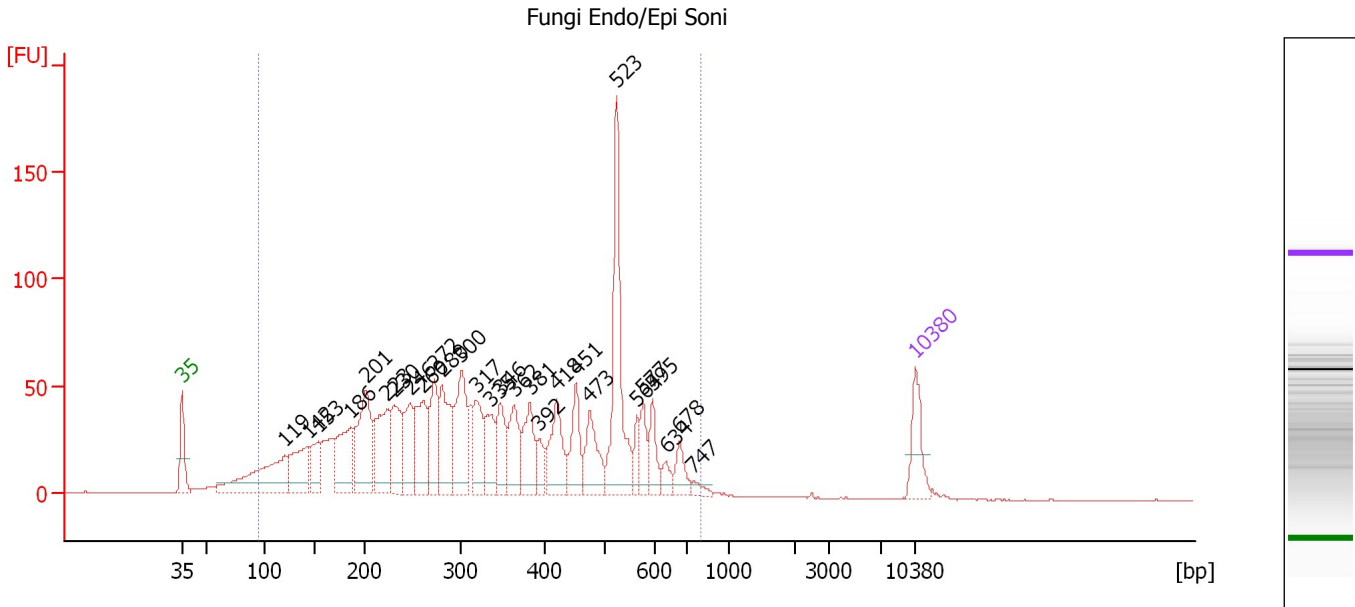
... Region table for sample 9 : Bact/Endo Soni 1:2

From [bp]	To [bp]	Average Size [bp]	Molarity [pmol/l]	Conc. [pg/μl]	Corr. Area	% of Total	Size distribution in CV [%]	Color
85	821	309	30,902.4	4,878.09	2,524.7	95	38.1	■

Assay Class: High Sensitivity DNA Assay
 Data Path: C:\...ioanalyzer\2013-06-12\2013-06-12_004_mRNA_Lib_gDNA_Soni.xad

Created: 6/12/2013 1:40:53 PM
 Modified: 6/12/2013 2:31:52 PM

Electropherogram Summary Continued ...



Overall Results for sample 10 : Fungi Endo/Epi Soni

Number of peaks found: 28 Corr. Area 1: 1,938.4
 Noise: 0.2

Peak table for sample 10 : Fungi Endo/Epi Soni

Peak	Size [bp]	Conc. [pg/μl]	Molarity [pmol/l]	Observations
1	35	125.00	5,411.3	Lower Marker
2	119	322.87	4,101.7	
3	142	186.30	1,984.4	
4	153	111.84	1,108.0	
5	186	198.54	1,621.4	
6	201	268.69	2,024.8	
7	223	211.35	1,434.9	
8	230	158.46	1,042.2	
9	246	139.58	858.3	
10	260	174.27	1,014.8	
11	272	153.81	857.3	
12	280	186.05	1,006.4	
13	300	206.25	1,041.6	
14	317	130.95	625.7	
15	335	107.13	484.7	
16	346	111.72	488.8	
17	362	121.39	507.9	
18	381	120.24	477.9	
19	392	47.55	183.8	
20	418	140.70	509.9	
21	451	105.94	355.9	
22	473	118.27	378.6	
23	523	330.55	958.2	
24	564	42.22	113.5	
25	577	57.80	151.9	
26	595	63.97	162.9	

Assay Class: High Sensitivity DNA Assay
 Data Path: C:\...ioanalyzer\2013-06-12\2013-06-12_004_mRNA_Lib_gDNA_Soni.xad


Created: 6/12/2013 1:40:53 PM
 Modified: 6/12/2013 2:31:52 PM

Electropherogram Summary Continued ...

... Peak table for sample 10 : Fungi Endo/Epi Soni

Peak	Size [bp]	Conc. [pg/μl]	Molarity [pmol/l]	Observations
27	634	29.67	70.9	
28	678	48.65	108.8	
29	747	17.10	34.7	
30	10,380	75.00	10.9	Upper Marker

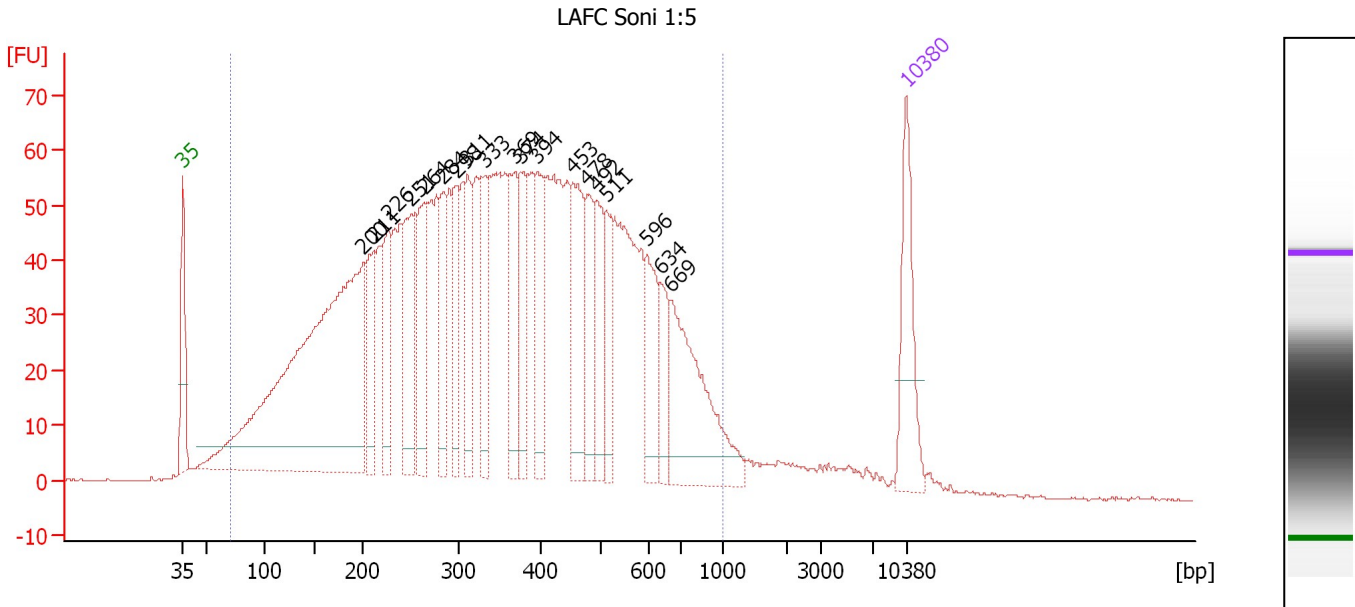
Region table for sample 10 : Fungi Endo/Epi Soni

From [bp]	To [bp]	Average Size [bp]	Molarity [pmol/l]	Conc. [pg/μl]	Corr. Area	% of Total	Size distribution in CV [%]	Color
95	797	346	24,861.3	4,125.35	1,938.4	96	42.5	

Assay Class: High Sensitivity DNA Assay
 Data Path: C:\...ioanalyzer\2013-06-12\2013-06-12_004_mRNA_Lib_gDNA_Soni.xad

Created: 6/12/2013 1:40:53 PM
 Modified: 6/12/2013 2:31:52 PM

Electropherogram Summary Continued ...



Overall Results for sample 11 : LAFSoni 1:5

Number of peaks found: 19 Corr. Area 1: 2,658.5
 Noise: 0.2

Peak table for sample 11 : LAFSoni 1:5

Peak	Size [bp]	Conc. [pg/μl]	Molarity [pmol/l]	Observations
1	35	125.00	5,411.3	Lower Marker
2	200	792.38	5,996.0	
3	211	92.65	663.9	
4	226	102.59	687.8	
5	251	127.80	772.5	
6	264	111.38	639.0	
7	284	76.49	407.7	
8	298	75.65	384.3	
9	311	81.07	395.1	
10	333	89.28	406.6	
11	369	88.49	363.7	
12	374	67.21	271.9	
13	394	78.78	302.7	
14	453	112.14	374.7	
15	478	72.63	230.3	
16	492	74.00	227.8	
17	511	62.31	184.6	
18	596	74.82	190.3	
19	634	47.46	113.4	
20	669	178.24	403.4	
21	10,380	75.00	10.9	Upper Marker

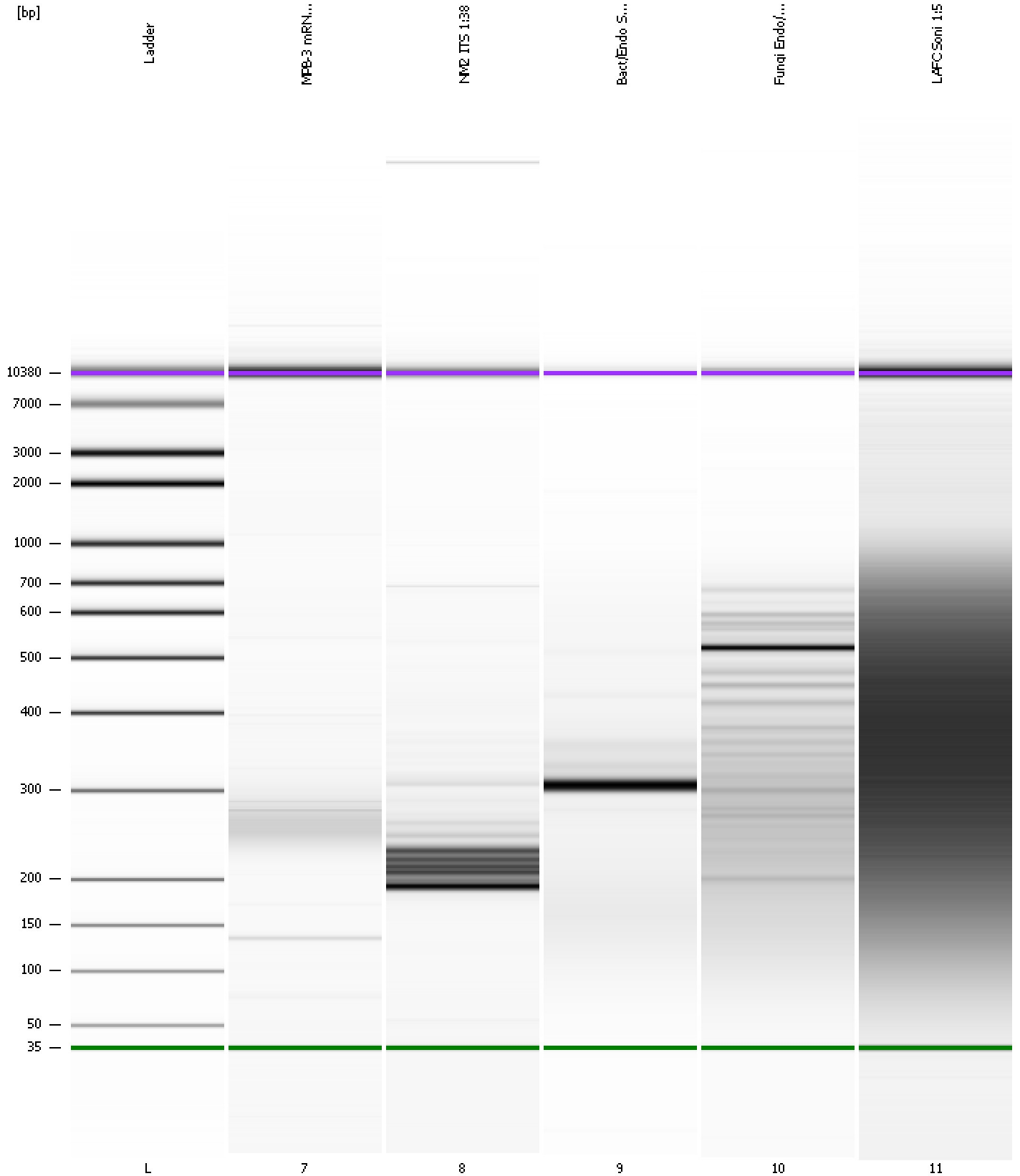
Region table for sample 11 : LAFSoni 1:5

From [bp]	To [bp]	Average Size [bp]	Molarity [pmol/l]	Conc. [pg/μl]	Corr. Area	% of Total	Size distribution in CV [%]	Color
71	1,000	372	24,266.7	4,020.10	2,658.5	95	46.6	Blue

Assay Class: High Sensitivity DNA Assay
Data Path: C:\...ioanalyzer\2013-06-12\2013-06-12_004_mRNA_Lib_gDNA_Soni.xad

Created: 6/12/2013 1:40:53 PM
Modified: 6/12/2013 2:31:52 PM

Gel Image



Assay Class: High Sensitivity DNA Assay
 Data Path: C:\...ioanalyzer\2013-06-12\2013-06-12_004_mRNA_Lib_gDNA_Soni.xad

Created: 6/12/2013 1:40:53 PM
 Modified: 6/12/2013 2:31:52 PM

Run Logbook

Description	Number	Source	Category	Sub Category	Time	Time Zone	User	Host
Run ended on port 1 (Number of wells acquired: 12)		Instrument	Run		6/12/2013 2:21:23 PM	(GMT --07:00) Pacific Standard Time	UC Davis	D8XSMGH1
Run started on port 1 (File: C:\Documents and Settings\Bioanalyzer\2013-06-12\2013-06-12_004.xad)		Instrument	Run		6/12/2013 1:40:59 PM	(GMT --07:00) Pacific Standard Time	UC Davis	D8XSMGH1
Product Number : G2938B		Instrument	Run		6/12/2013 1:40:59 PM	(GMT --07:00) Pacific Standard Time	UC Davis	D8XSMGH1
Name :		Instrument	Run		6/12/2013 1:40:59 PM	(GMT --07:00) Pacific Standard Time	UC Davis	D8XSMGH1
Vendor : Agilent Technologies		Instrument	Run		6/12/2013 1:40:59 PM	(GMT --07:00) Pacific Standard Time	UC Davis	D8XSMGH1
Serial# : DE13701086		Instrument	Run		6/12/2013 1:40:59 PM	(GMT --07:00) Pacific Standard Time	UC Davis	D8XSMGH1
Firmware : C.01.069		Instrument	Run		6/12/2013 1:40:59 PM	(GMT --07:00) Pacific Standard Time	UC Davis	D8XSMGH1
Cartridge : Electrode		Instrument	Run		6/12/2013 1:40:59 PM	(GMT --07:00) Pacific Standard Time	UC Davis	D8XSMGH1