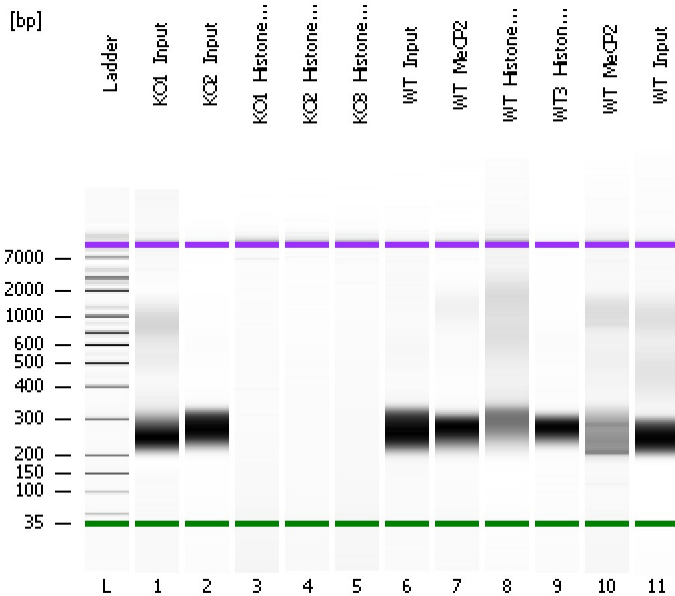


Assay Class: High Sensitivity DNA Assay
Data Path: C:\...ents and Settings\Bioanalyzer\2013-06-13\2013-06-13_006.xad

Created: 6/13/2013 3:35:37 PM
Modified: 6/13/2013 4:15:00 PM

Electrophoresis File Run Summary



Instrument Information:

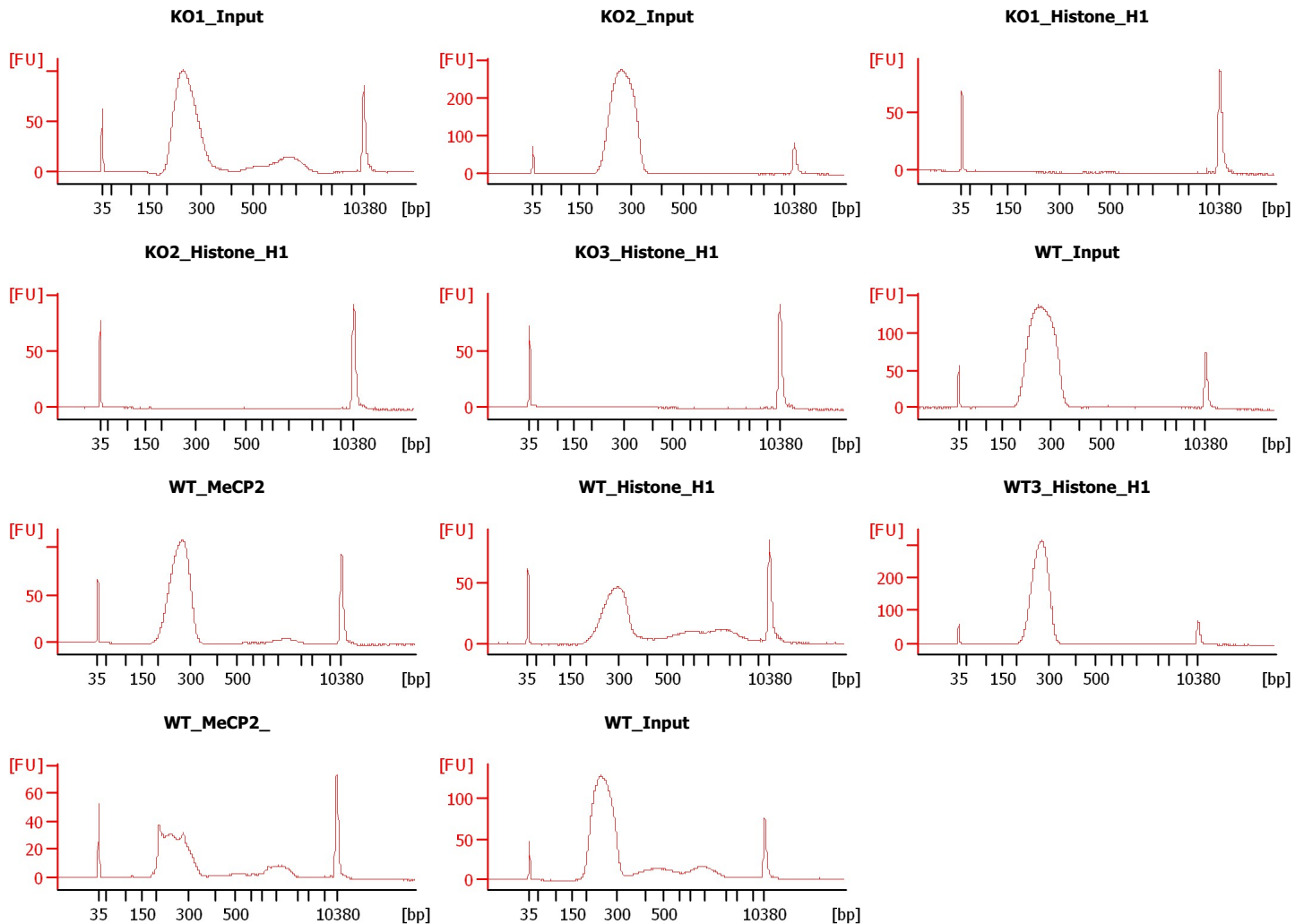
Instrument Name: DE13701086 Firmware: C.01.069
Serial#: DE13701086 Type: G2938B

Assay Information:

Assay Origin Path: C:\Program Files\Agilent\2100 bioanalyzer\2100 expert\assays\dsDNA\High Sensitivity DNA.xsy
Assay Class: High Sensitivity DNA Assay
Version: 1.03
Assay Comments: Copyright © 2003-2010 Agilent Technologies

Chip Information:

Chip Lot #: Reagent Kit Lot #: Chip Comments:



Assay Class: High Sensitivity DNA Assay
Data Path: C:\...ents and Settings\Bioanalyzer\2013-06-13\2013-06-13_006.xad

Created: 6/13/2013 3:35:37 PM
Modified: 6/13/2013 4:15:00 PM

Electrophoresis File Run Summary (Chip Summary)

Sample Name	Sample Comment	Rest. Digest	Status	Observation	Result Label	Result Color
KO1_Input		<input type="checkbox"/>	✓			
KO2_Input		<input type="checkbox"/>	✓			
KO1_Histone_H1		<input type="checkbox"/>	✓			
KO2_Histone_H1		<input type="checkbox"/>	✓			
KO3_Histone_H1		<input type="checkbox"/>	✓			
WT_Input		<input type="checkbox"/>	✓			
WT_MeCP2		<input type="checkbox"/>	✓			
WT_Histone_H1		<input type="checkbox"/>	✓			
WT3_Histone_H1		<input type="checkbox"/>	✓			
WT_MeCP2_		<input type="checkbox"/>	✓			
WT_Input		<input type="checkbox"/>	✓			
Ladder		<input type="checkbox"/>	✓			

Chip Lot #

Reagent Kit Lot #

Chip Comments :

Assay Class: High Sensitivity DNA Assay
Data Path: C:\...ents and Settings\Bioanalyzer\2013-06-13\2013-06-13_006.xad

Created: 6/13/2013 3:35:37 PM
Modified: 6/13/2013 4:15:00 PM

Electrophoresis Assay Details

General Analysis Settings

Number of Available Sample and Ladder Wells (Max.) : 12
Minimum Visible Range [s] : 32
Maximum Visible Range [s] : 138
Start Analysis Time Range [s] : 33
End Analysis Time Range [s] : 137.5
Ladder Concentration [pg/μl] : 1950
Uses Standard Area for Ladder Fragments
Lower Marker Concentration [pg/μl] : 125
Upper Marker Concentration [pg/μl] : 75
Used Upper Marker for Quantitation
Standard Curve Fit is Point to Point
Show Data Aligned to Lower and Upper Marker

Integrator Settings

Integration Start Time [s] : 33.05
Integration End Time [s] : 137
Slope Threshold : 0.8
Height Threshold [FU] : 5
Area Threshold : 0.1
Width Threshold [s] : 0.6
Baseline Plateau [s] : 0.5

Filter Settings

Filter Width [s] : 0.5
Polynomial Order : 4

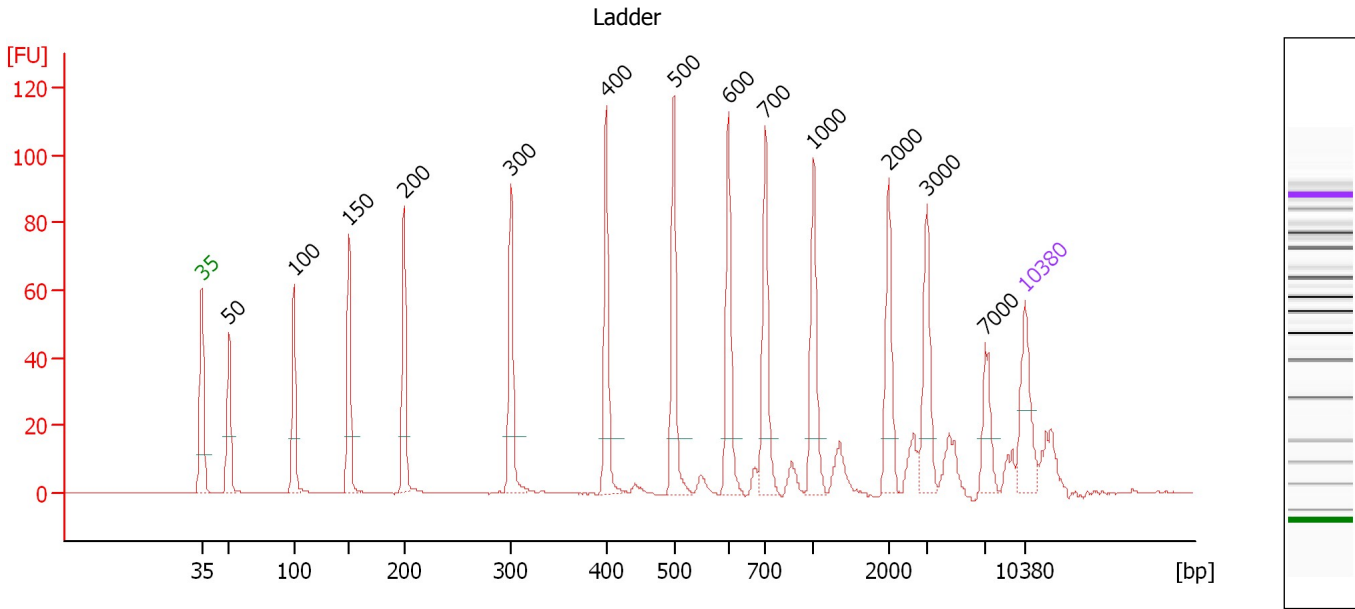
Ladder

Ladder Peak	Size	Area
1	35	160
2	50	210
3	100	208
4	150	221
5	200	242
6	300	270
7	400	305
8	500	306
9	600	336
10	700	321
11	1000	366
12	2000	413
13	3000	411
14	7000	400
15	10380	214

Assay Class: High Sensitivity DNA Assay
 Data Path: C:\...ents and Settings\Bioanalyzer\2013-06-13\2013-06-13_006.xad

Created: 6/13/2013 3:35:37 PM
 Modified: 6/13/2013 4:15:00 PM

Electropherogram Summary



Overall Results for Ladder

Noise: 0.1

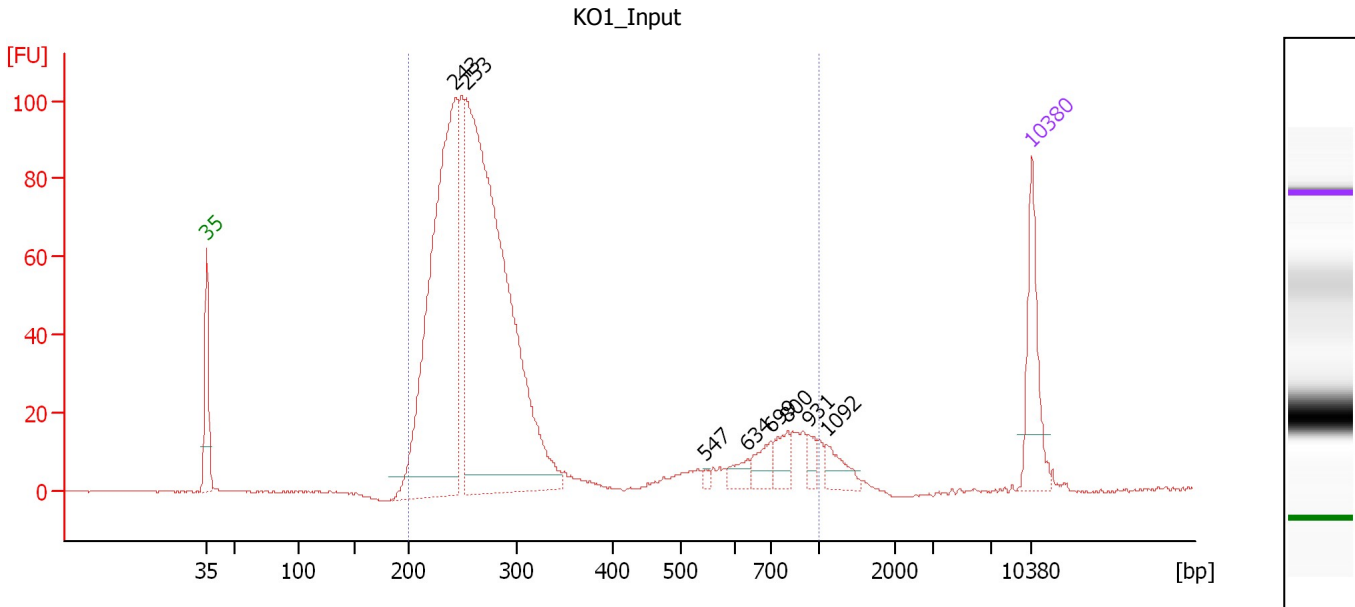
Peak table for Ladder

Peak	Size [bp]	Conc. [pg/μl]	Molarity [pmol/l]	Observations
1	35	125.00	5,411.3	Lower Marker
2	50	150.00	4,545.5	Ladder Peak
3	100	150.00	2,272.7	Ladder Peak
4	150	150.00	1,515.2	Ladder Peak
5	200	150.00	1,136.4	Ladder Peak
6	300	150.00	757.6	Ladder Peak
7	400	150.00	568.2	Ladder Peak
8	500	150.00	454.5	Ladder Peak
9	600	150.00	378.8	Ladder Peak
10	700	150.00	324.7	Ladder Peak
11	1,000	150.00	227.3	Ladder Peak
12	2,000	150.00	113.6	Ladder Peak
13	3,000	150.00	75.8	Ladder Peak
14	7,000	150.00	32.5	Ladder Peak
15	10,380	75.00	10.9	Upper Marker

Assay Class: High Sensitivity DNA Assay
 Data Path: C:\...ents and Settings\Bioanalyzer\2013-06-13\2013-06-13_006.xad

Created: 6/13/2013 3:35:37 PM
 Modified: 6/13/2013 4:15:00 PM

Electropherogram Summary Continued ...



Overall Results for sample 1 : KO1 Input

Number of peaks found: 8 Corr. Area 1: 1,252.0
 Noise: 0.2

Peak table for sample 1 : KO1 Input

Peak	Size [bp]	Conc. [pg/μl]	Molarity [pmol/l]	Observations
1	35	125.00	5,411.3	Lower Marker
2	243	729.93	4,557.2	
3	253	1,041.66	6,235.7	
4	547	4.64	12.8	
5	634	19.42	46.4	
6	699	27.18	58.9	
7	800	27.57	52.2	
8	931	15.14	24.6	
9	1,092	27.34	37.9	
10	10,380	75.00	10.9	Upper Marker

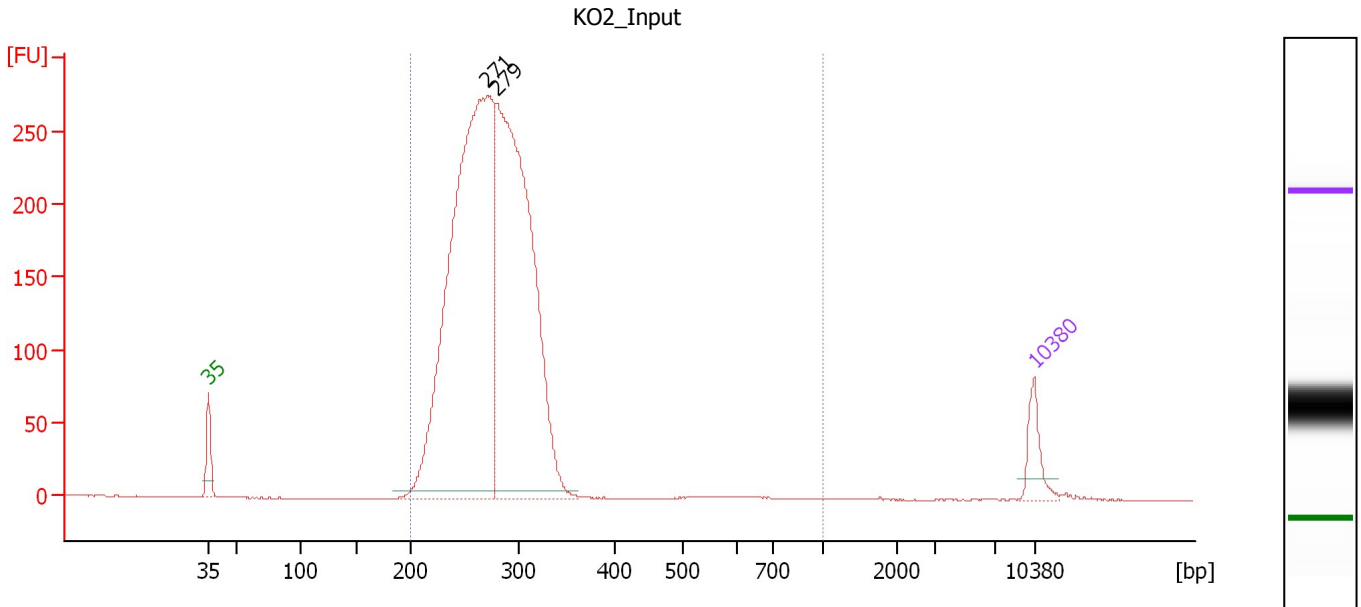
Region table for sample 1 : KO1 Input

From [bp]	To [bp]	Average Size [bp]	Molarity [pmol/l]	Conc. [pg/μl]	Corr. Area	% of Total	Size distribution in CV [%]	Color
200	1,000	323	11,230.7	2,015.16	1,252.0	97	52.6	Blue

Assay Class: High Sensitivity DNA Assay
 Data Path: C:\...ents and Settings\Bioanalyzer\2013-06-13\2013-06-13_006.xad

Created: 6/13/2013 3:35:37 PM
 Modified: 6/13/2013 4:15:00 PM

Electropherogram Summary Continued ...



Overall Results for sample 2 : KO2_Input

Number of peaks found: 2 Corr. Area 1: 3,280.5
 Noise: 0.3

Peak table for sample 2 : KO2_Input

Peak	Size [bp]	Conc. [pg/μl]	Molarity [pmol/l]	Observations
1	35	125.00	5,411.3	Lower Marker
2	271	2,624.42	14,692.9	
3	279	2,117.14	11,495.0	
4	10,380	75.00	10.9	Upper Marker

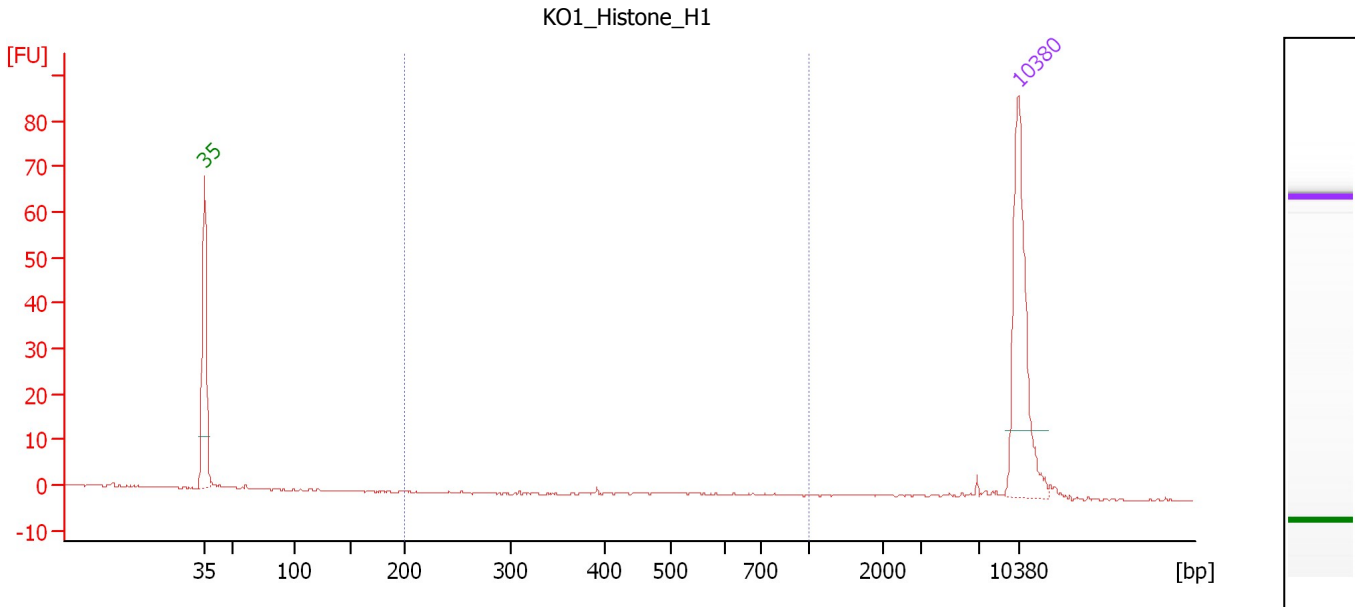
Region table for sample 2 : KO2_Input

From [bp]	To [bp]	Average Size [bp]	Molarity [pmol/l]	Conc. [pg/μl]	Corr. Area	% of Total	Size distribution in CV [%]	Color
200	1,000	275	26,479.1	4,756.00	3,280.5	100	13.1	Blue

Assay Class: High Sensitivity DNA Assay
 Data Path: C:\...ents and Settings\Bioanalyzer\2013-06-13\2013-06-13_006.xad

Created: 6/13/2013 3:35:37 PM
 Modified: 6/13/2013 4:15:00 PM

Electropherogram Summary Continued ...



Overall Results for sample 3 : KO1_Histone_H1

Number of peaks found: 0 Corr. Area 1: 1.1
 Noise: 0.1

Peak table for sample 3 : KO1_Histone_H1

Peak	Size [bp]	Conc. [pg/μl]	Molarity [pmol/l]	Observations
1	35	125.00	5,411.3	Lower Marker
2	10,380	75.00	10.9	Upper Marker

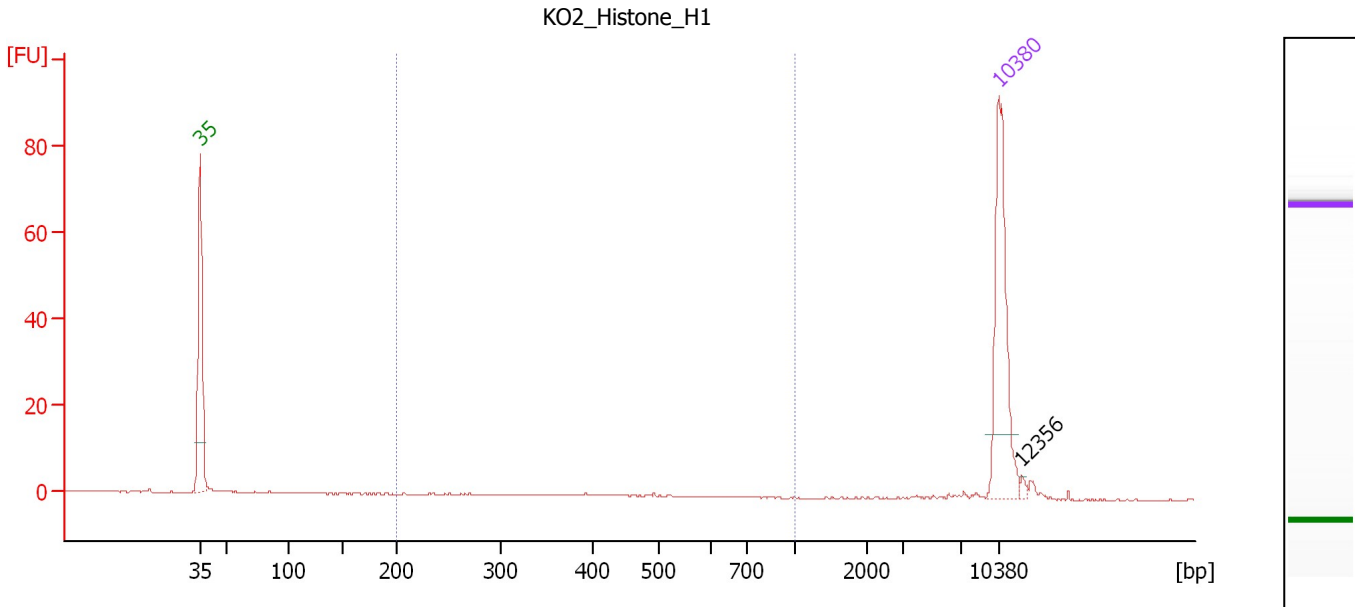
Region table for sample 3 : KO1_Histone_H1

From [bp]	To [bp]	Average Size [bp]	Molarity [pmol/l]	Conc. [pg/μl]	Corr. Area	% of Total	Size distribution in CV [%]	Color
200	1,000	603	3.0	1.07	1.1	8	27.1	Blue

Assay Class: High Sensitivity DNA Assay
 Data Path: C:\...ents and Settings\Bioanalyzer\2013-06-13\2013-06-13_006.xad

Created: 6/13/2013 3:35:37 PM
 Modified: 6/13/2013 4:15:00 PM

Electropherogram Summary Continued ...



Overall Results for sample 4 : KO2_Histone_H1

Number of peaks found: 1 Corr. Area 1: 0.7
 Noise: 0.1

Peak table for sample 4 : KO2_Histone_H1

Peak	Size [bp]	Conc. [pg/μl]	Molarity [pmol/l]	Observations
1	35	125.00	5,411.3	Lower Marker
2	10,380	75.00	10.9	Upper Marker
3	12,356	0.00	0.0	

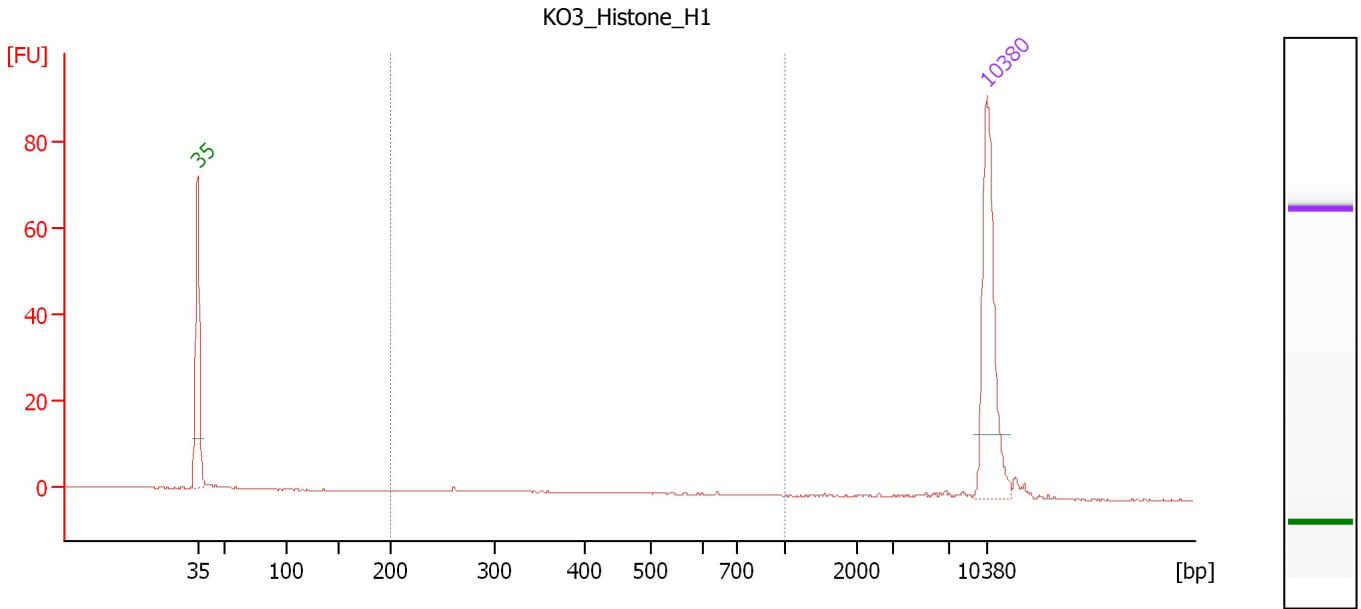
Region table for sample 4 : KO2_Histone_H1

From [bp]	To [bp]	Average Size [bp]	Molarity [pmol/l]	Conc. [pg/μl]	Corr. Area	% of Total	Size distribution in CV [%]	Color
200	1,000	381	3.8	0.88	0.7	6	21.1	Blue

Assay Class: High Sensitivity DNA Assay
 Data Path: C:\...ents and Settings\Bioanalyzer\2013-06-13\2013-06-13_006.xad

Created: 6/13/2013 3:35:37 PM
 Modified: 6/13/2013 4:15:00 PM

Electropherogram Summary Continued ...



Overall Results for sample 5 : KO3_Histone_H1

Number of peaks found: 0 Corr. Area 1: 5.1
 Noise: 0.1

Peak table for sample 5 : KO3_Histone_H1

Peak	Size [bp]	Conc. [pg/μl]	Molarity [pmol/l]	Observations
1	35	125.00	5,411.3	Lower Marker
2	10,380	75.00	10.9	Upper Marker

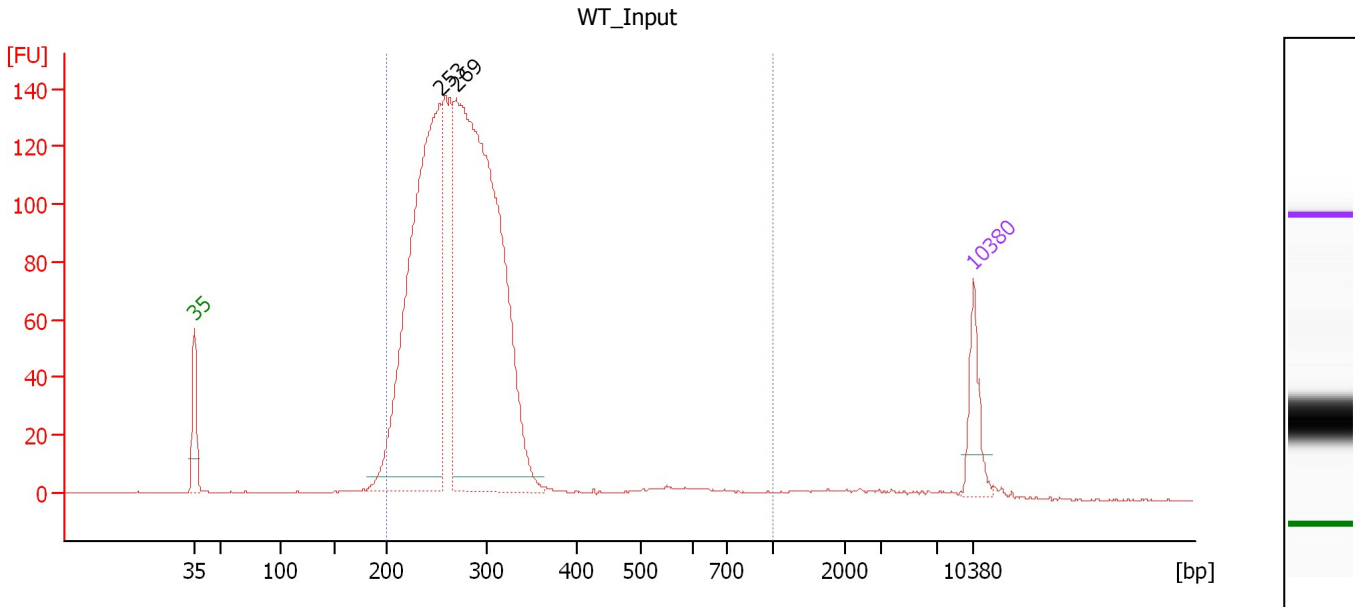
Region table for sample 5 : KO3_Histone_H1

From [bp]	To [bp]	Average Size [bp]	Molarity [pmol/l]	Conc. [pg/μl]	Corr. Area	% of Total	Size distribution in CV [%]	Color
200	1,000	392	25.8	5.82	5.1	27	34.9	Blue

Assay Class: High Sensitivity DNA Assay
 Data Path: C:\...ents and Settings\Bioanalyzer\2013-06-13\2013-06-13_006.xad

Created: 6/13/2013 3:35:37 PM
 Modified: 6/13/2013 4:15:00 PM

Electropherogram Summary Continued ...



Overall Results for sample 6 : WT_Input

Number of peaks found: 2 Corr. Area 1: 1,929.2
 Noise: 0.1

Peak table for sample 6 : WT_Input

Peak	Size [bp]	Conc. [pg/μl]	Molarity [pmol/l]	Observations
1	35	125.00	5,411.3	Lower Marker
2	253	1,276.66	7,641.3	
3	269	1,792.30	10,098.7	
4	10,380	75.00	10.9	Upper Marker

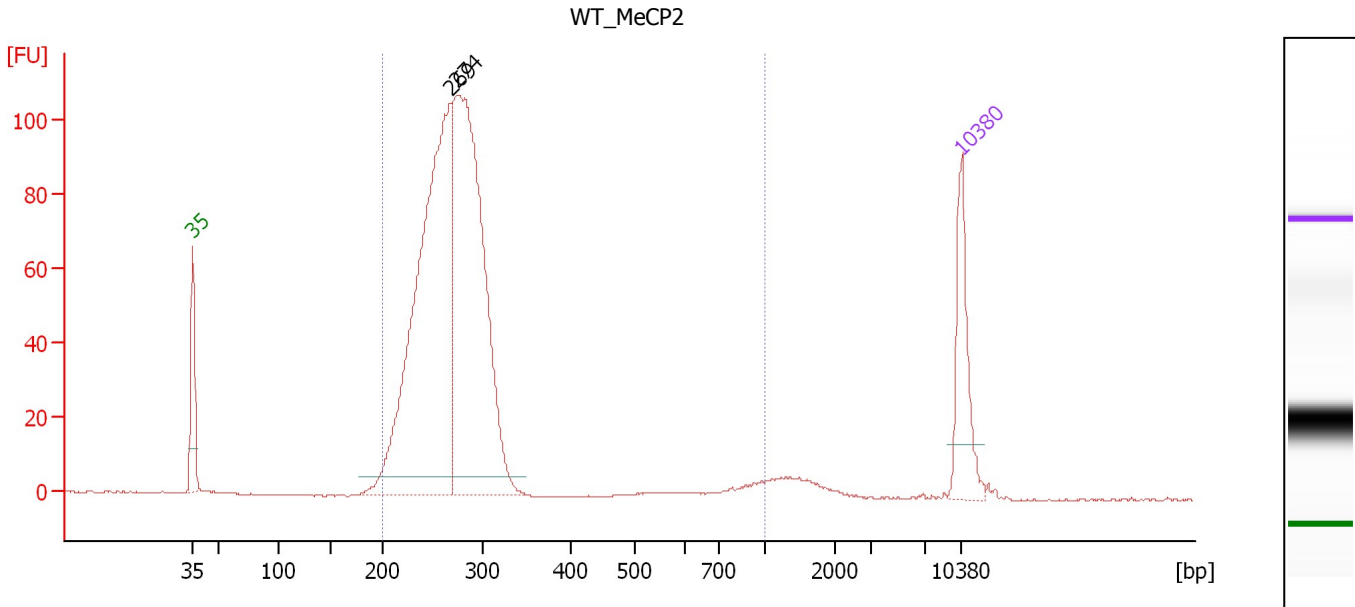
Region table for sample 6 : WT_Input

From [bp]	To [bp]	Average Size [bp]	Molarity [pmol/l]	Conc. [pg/μl]	Corr. Area	% of Total	Size distribution in CV [%]	Color
200	1,000	281	19,690.4	3,514.69	1,929.2	95	25.6	Blue

Assay Class: High Sensitivity DNA Assay
 Data Path: C:\...ents and Settings\Bioanalyzer\2013-06-13\2013-06-13_006.xad

Created: 6/13/2013 3:35:37 PM
 Modified: 6/13/2013 4:15:00 PM

Electropherogram Summary Continued ...



Overall Results for sample 7 : WT_MeCP2

Number of peaks found: 2 Corr. Area 1: 1,100.1
 Noise: 0.1

Peak table for sample 7 : WT_MeCP2

Peak	Size [bp]	Conc. [pg/μl]	Molarity [pmol/l]	Observations
1	35	125.00	5,411.3	Lower Marker
2	269	736.78	4,156.6	
3	274	670.81	3,710.8	
4	10,380	75.00	10.9	Upper Marker

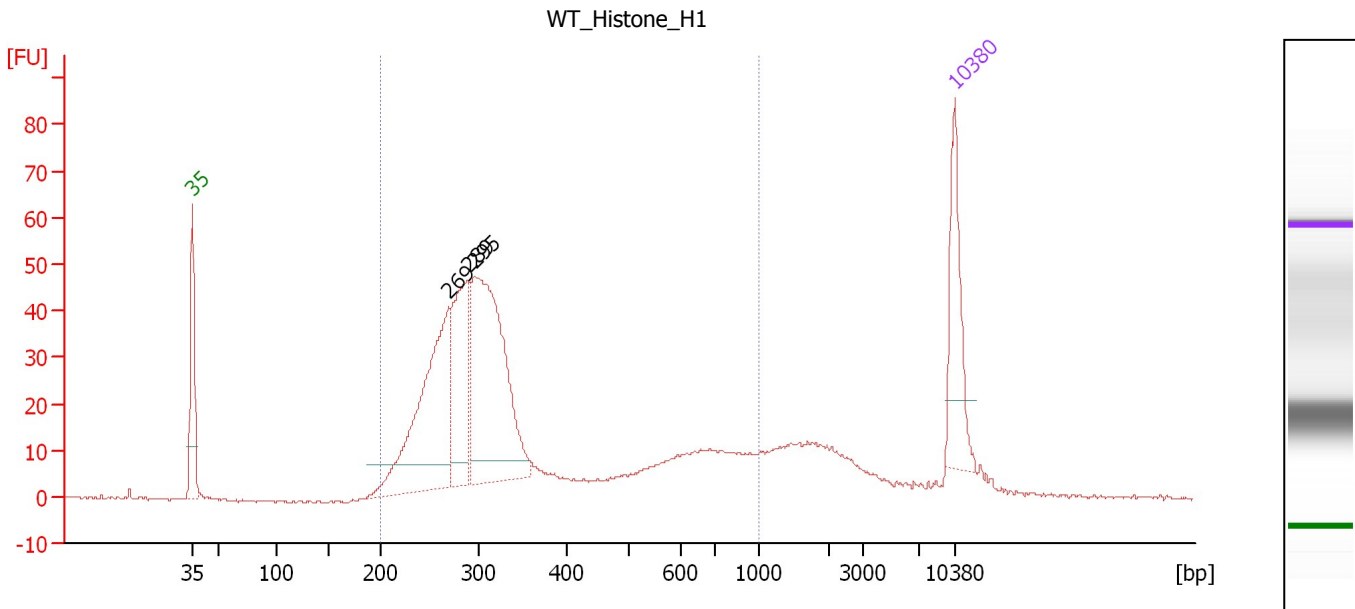
Region table for sample 7 : WT_MeCP2

From [bp]	To [bp]	Average Size [bp]	Molarity [pmol/l]	Conc. [pg/μl]	Corr. Area	% of Total	Size distribution in CV [%]	Color
200	1,000	279	7,999.1	1,420.07	1,100.1	97	29.2	Blue

Assay Class: High Sensitivity DNA Assay
 Data Path: C:\...ents and Settings\Bioanalyzer\2013-06-13\2013-06-13_006.xad

Created: 6/13/2013 3:35:37 PM
 Modified: 6/13/2013 4:15:00 PM

Electropherogram Summary Continued ...



Overall Results for sample 8 : WT_Histone_H1

Number of peaks found: 3 Corr. Area 1: 735.2
 Noise: 0.3

Peak table for sample 8 : WT_Histone_H1

Peak	Size [bp]	Conc. [pg/μl]	Molarity [pmol/l]	Observations
1	35	125.00	5,411.3	Lower Marker
2	269	284.44	1,601.4	
3	289	157.61	826.4	
4	295	342.49	1,756.5	
5	10,380	75.00	10.9	Upper Marker

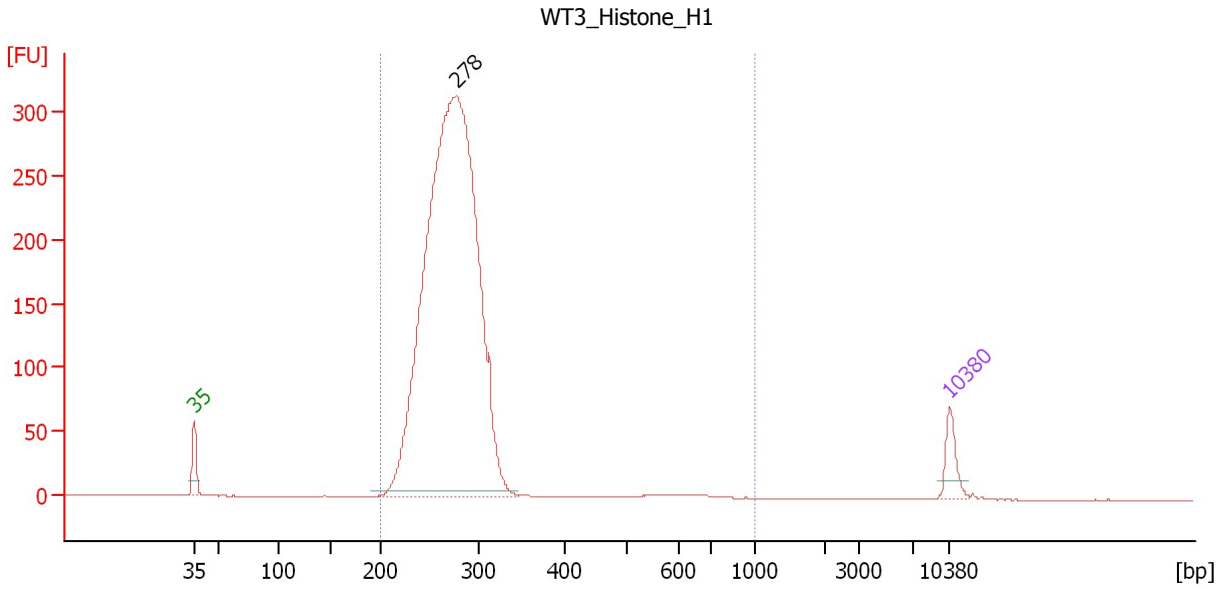
Region table for sample 8 : WT_Histone_H1

From [bp]	To [bp]	Average Size [bp]	Molarity [pmol/l]	Conc. [pg/μl]	Corr. Area	% of Total	Size distribution in CV [%]	Color
200	1,000	377	5,315.8	1,099.73	735.2	83	46.5	Blue

Assay Class: High Sensitivity DNA Assay
 Data Path: C:\...ents and Settings\Bioanalyzer\2013-06-13\2013-06-13_006.xad

Created: 6/13/2013 3:35:37 PM
 Modified: 6/13/2013 4:15:00 PM

Electropherogram Summary Continued ...



Overall Results for sample 9 : WT3_Histone_H1

Number of peaks found: 1 Corr. Area 1: 2,707.7
 Noise: 0.2

Peak table for sample 9 : WT3_Histone_H1

Peak	Size [bp]	Conc. [pg/μl]	Molarity [pmol/l]	Observations
1	35	125.00	5,411.3	Lower Marker
2	278	4,595.70	25,080.7	
3	10,380	75.00	10.9	Upper Marker

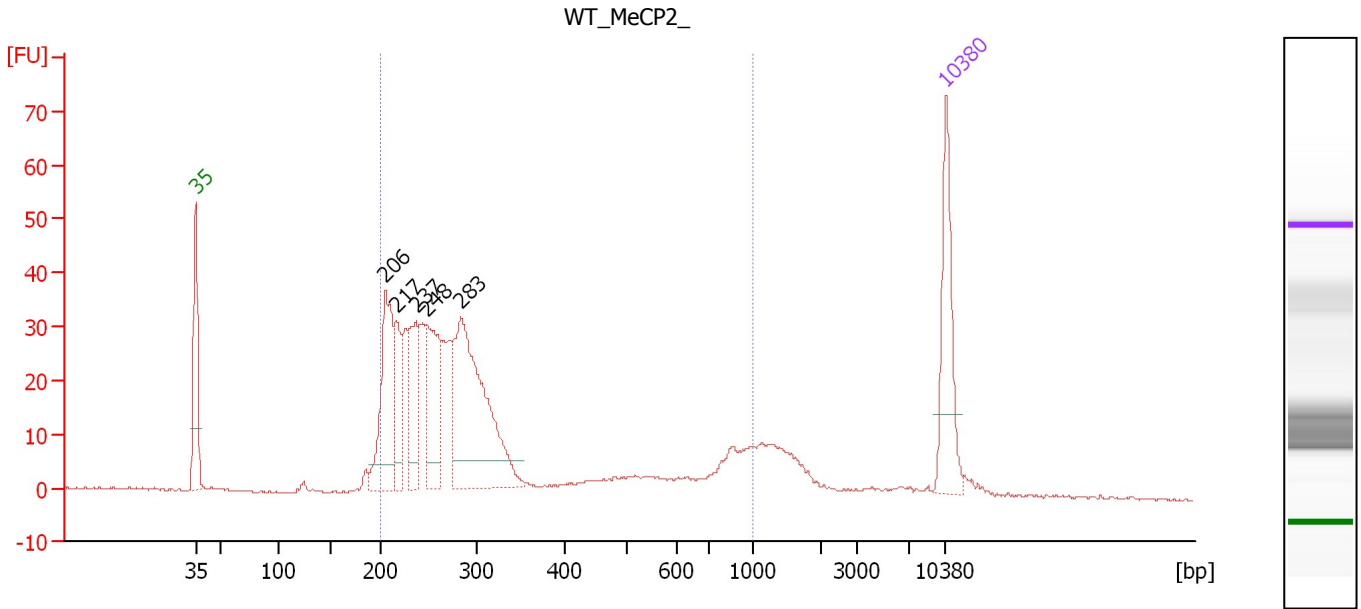
Region table for sample 9 : WT3_Histone_H1

From [bp]	To [bp]	Average Size [bp]	Molarity [pmol/l]	Conc. [pg/μl]	Corr. Area	% of Total	Size distribution in CV [%]	Color
200	1,000	276	26,121.2	4,696.80	2,707.7	100	15.9	Blue

Assay Class: High Sensitivity DNA Assay
 Data Path: C:\...ents and Settings\Bioanalyzer\2013-06-13\2013-06-13_006.xad

Created: 6/13/2013 3:35:37 PM
 Modified: 6/13/2013 4:15:00 PM

Electropherogram Summary Continued ...



Overall Results for sample 10 : WT_MeCP2_

Number of peaks found: 5 Corr. Area 1: 562.2
 Noise: 0.2

Peak table for sample 10 : WT_MeCP2_

Peak	Size [bp]	Conc. [pg/μl]	Molarity [pmol/l]	Observations
1	35	125.00	5,411.3	Lower Marker
2	206	149.15	1,098.7	
3	217	64.01	446.6	
4	237	87.07	555.9	
5	248	117.86	721.0	
6	283	263.72	1,411.2	
7	10,380	75.00	10.9	Upper Marker

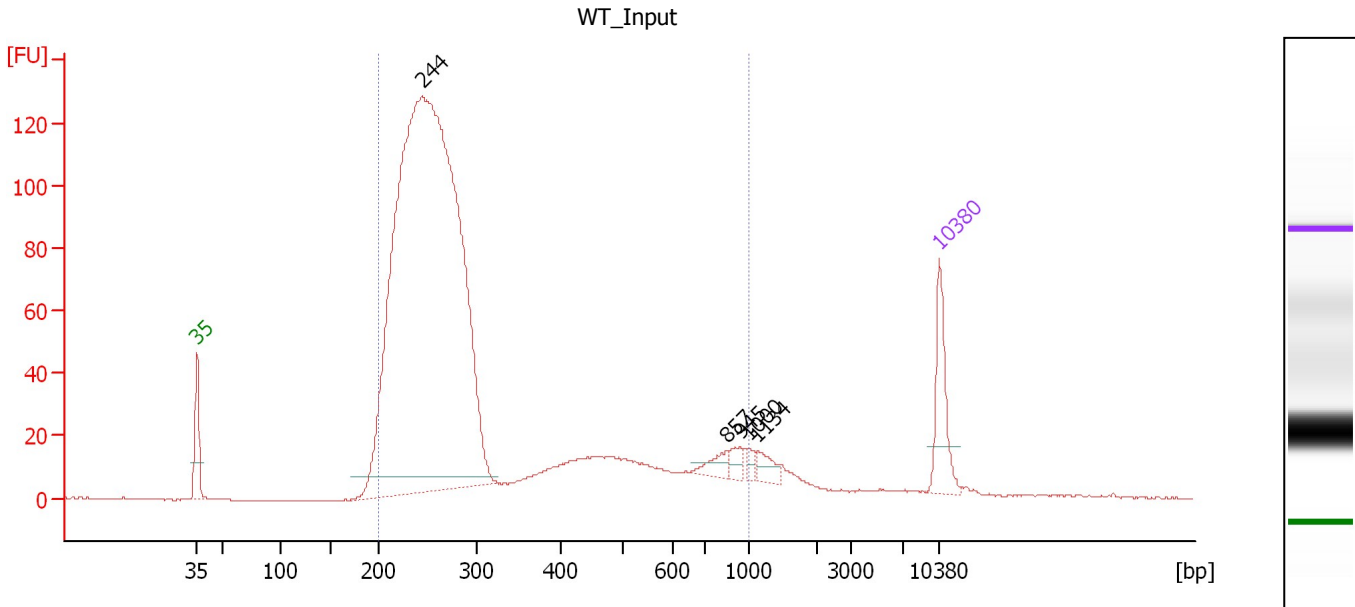
Region table for sample 10 : WT_MeCP2_

From [bp]	To [bp]	Average Size [bp]	Molarity [pmol/l]	Conc. [pg/μl]	Corr. Area	% of Total	Size distribution in CV [%]	Color
200	1,000	334	5,462.1	990.12	562.2	86	54.0	Blue

Assay Class: High Sensitivity DNA Assay
 Data Path: C:\...ents and Settings\Bioanalyzer\2013-06-13\2013-06-13_006.xad

Created: 6/13/2013 3:35:37 PM
 Modified: 6/13/2013 4:15:00 PM

Electropherogram Summary Continued ...



Overall Results for sample 11 : WT Input

Number of peaks found: 5 Corr. Area 1: 1,677.7
 Noise: 0.2

Peak table for sample 11 : WT Input

Peak	Size [bp]	Conc. [pg/μl]	Molarity [pmol/l]	Observations
1	35	125.00	5,411.3	Lower Marker
2	244	2,622.51	16,262.5	
3	857	24.91	44.0	
4	945	17.30	27.7	
5	1,000	10.31	15.6	
6	1,134	24.38	32.6	
7	10,380	75.00	10.9	Upper Marker

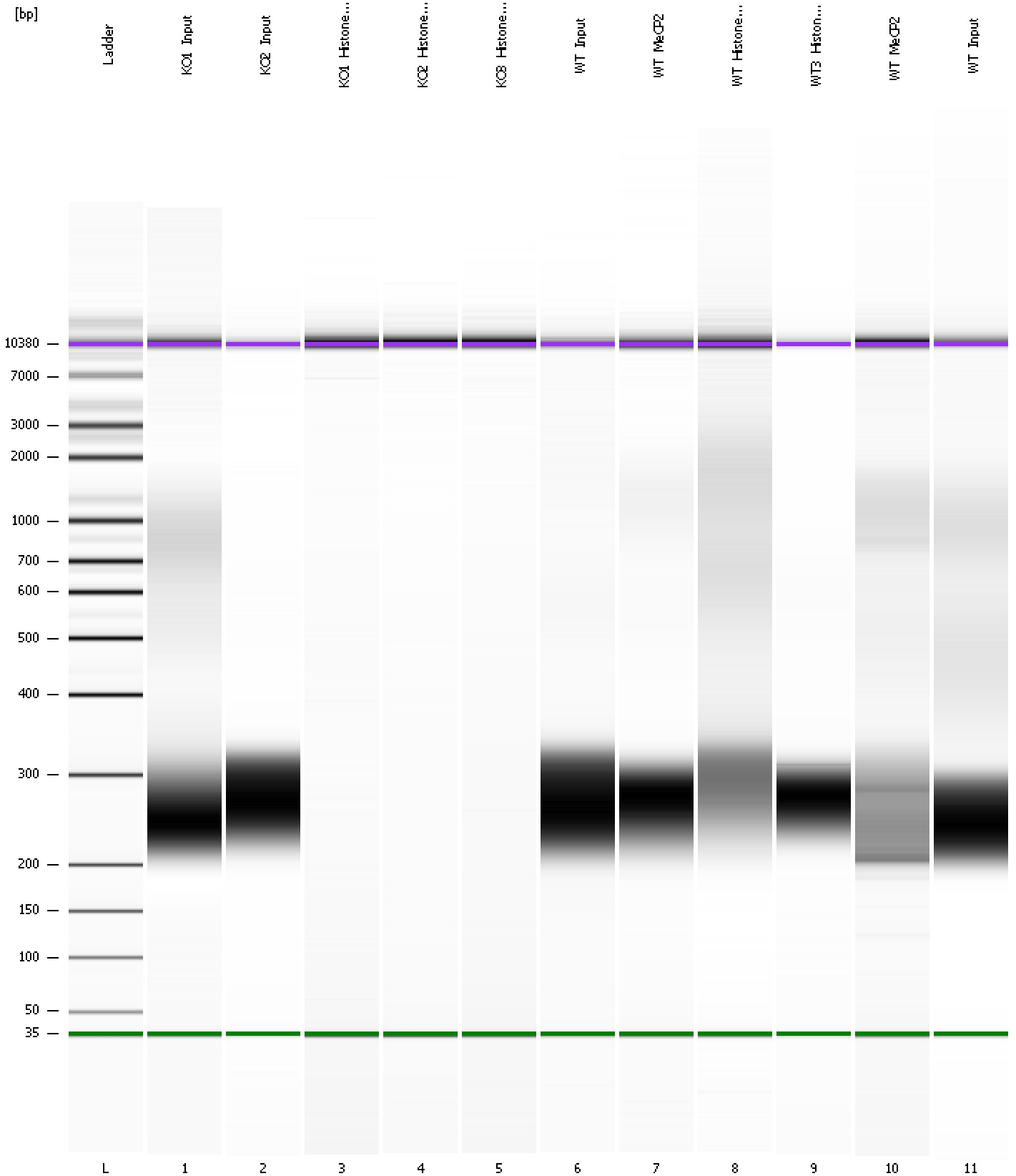
Region table for sample 11 : WT Input

From [bp]	To [bp]	Average Size [bp]	Molarity [pmol/l]	Conc. [pg/μl]	Corr. Area	% of Total	Size distribution in CV [%]	Color
200	1,000	320	17,009.1	3,045.25	1,677.7	93	49.4	Blue

Assay Class: High Sensitivity DNA Assay
Data Path: C:\...ents and Settings\Bioanalyzer\2013-06-13\2013-06-13_006.xad

Created: 6/13/2013 3:35:37 PM
Modified: 6/13/2013 4:15:00 PM

Gel Image



Assay Class: High Sensitivity DNA Assay
 Data Path: C:\...ents and Settings\Bioanalyzer\2013-06-13\2013-06-13_006.xad

Created: 6/13/2013 3:35:37 PM
 Modified: 6/13/2013 4:15:00 PM

Run Logbook

Description	Number	Source	Category	Sub Category	Time	Time Zone	User	Host
Run ended on port 1 (Number of wells acquired: 12)		Instrument	Run		6/13/2013 4:15:00 PM	(GMT --07:00) Pacific Standard Time	UC Davis	D8XSMGH1
Run started on port 1 (File: C:\Documents and Settings\Bioanalyzer\2013-06-13\2013-06-13_006.xad)		Instrument	Run		6/13/2013 3:35:37 PM	(GMT --07:00) Pacific Standard Time	UC Davis	D8XSMGH1
Product Number : G2938B		Instrument	Run		6/13/2013 3:35:37 PM	(GMT --07:00) Pacific Standard Time	UC Davis	D8XSMGH1
Name :		Instrument	Run		6/13/2013 3:35:37 PM	(GMT --07:00) Pacific Standard Time	UC Davis	D8XSMGH1
Vendor : Agilent Technologies		Instrument	Run		6/13/2013 3:35:37 PM	(GMT --07:00) Pacific Standard Time	UC Davis	D8XSMGH1
Serial# : DE13701086		Instrument	Run		6/13/2013 3:35:37 PM	(GMT --07:00) Pacific Standard Time	UC Davis	D8XSMGH1
Firmware : C.01.069		Instrument	Run		6/13/2013 3:35:37 PM	(GMT --07:00) Pacific Standard Time	UC Davis	D8XSMGH1
Cartridge : Electrode		Instrument	Run		6/13/2013 3:35:37 PM	(GMT --07:00) Pacific Standard Time	UC Davis	D8XSMGH1