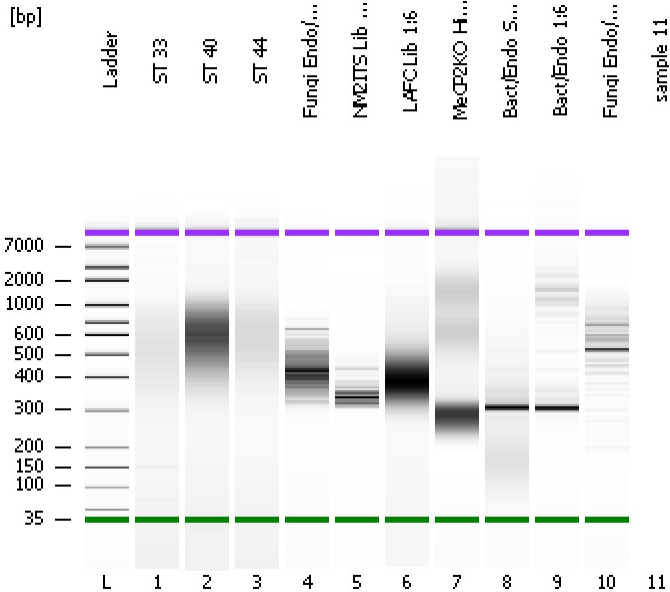


Assay Class: High Sensitivity DNA Assay
Data Path: C:\...ents and Settings\Bioanalyzer\2013-06-13\2013-06-13_007.xad

Created: 6/13/2013 4:43:17 PM
Modified: 6/13/2013 5:23:43 PM

Electrophoresis File Run Summary



Instrument Information:

Instrument Name: DE13701086 Firmware: C.01.069
Serial#: DE13701086 Type: G2938B

Assay Information:

Assay Origin Path: C:\Program Files\Agilent\2100 bioanalyzer\2100 expert\assays\dsDNA\High Sensitivity DNA.xsy
Assay Class: High Sensitivity DNA Assay
Version: 1.03
Assay Comments: Copyright © 2003-2010 Agilent Technologies

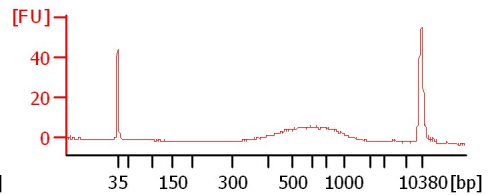
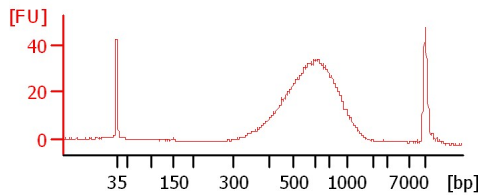
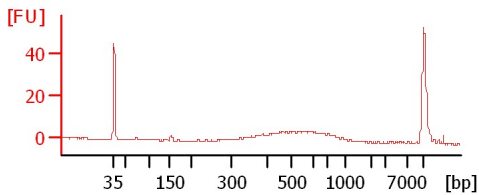
Chip Information:

Chip Lot #:
Reagent Kit Lot #:
Chip Comments:

ST 33

ST 40

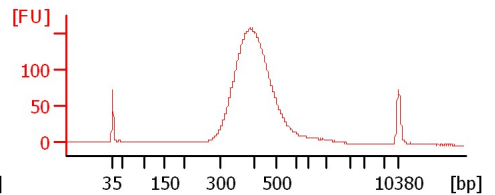
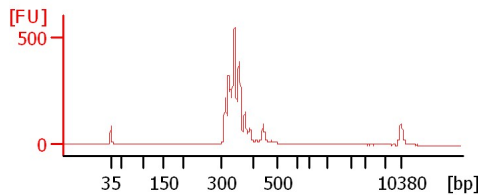
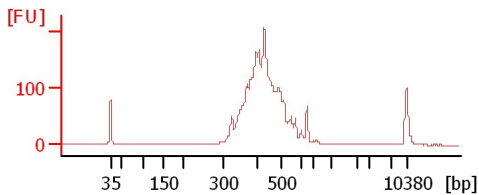
ST 44



Fungi Endo/Epi Lib 1:17

NM2ITS Lib 1:16

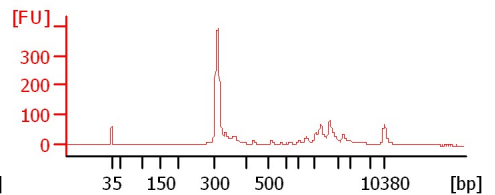
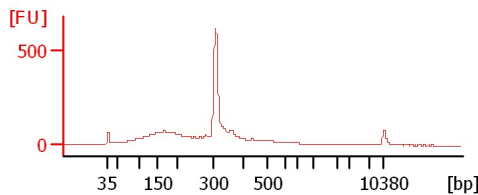
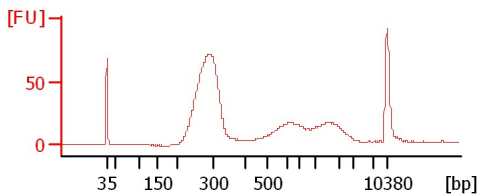
LAFCLib 1:6



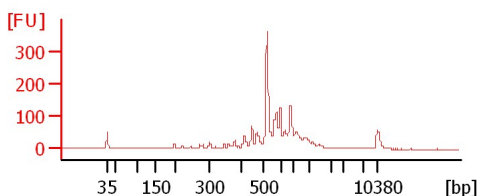
MeCP2KO_HistoneH1

Bact/Endo Soni 1:2

Bact/Endo 1:6



Fungi Endo/Epi 1:3



Assay Class: High Sensitivity DNA Assay
Data Path: C:\...ents and Settings\Bioanalyzer\2013-06-13\2013-06-13_007.xad

Created: 6/13/2013 4:43:17 PM
Modified: 6/13/2013 5:23:43 PM

Electrophoresis File Run Summary (Chip Summary)

Sample Name	Sample Comment	Rest. Digest	Status	Observation	Result Label	Result Color
ST 33		<input type="checkbox"/>	✓			
ST 40		<input type="checkbox"/>	✓			
ST 44		<input type="checkbox"/>	✓			
Fungi Endo/Epi Lib 1:17		<input type="checkbox"/>	✓			
NM2ITS Lib 1:16		<input type="checkbox"/>	✓			
LAFC Lib 1:6		<input type="checkbox"/>	✓			
MeCP2KO_HistoneH1		<input type="checkbox"/>	✓			
Bact/Endo Soni 1:2		<input type="checkbox"/>	✓			
Bact/Endo 1:6		<input type="checkbox"/>	✓			
Fungi Endo/Epi 1:3		<input type="checkbox"/>	✓			
sample 11		<input type="checkbox"/>				
Ladder		<input type="checkbox"/>	✓			

Chip Lot #

Reagent Kit Lot #

Chip Comments :

Assay Class: High Sensitivity DNA Assay
 Data Path: C:\...ents and Settings\Bioanalyzer\2013-06-13\2013-06-13_007.xad

Created: 6/13/2013 4:43:17 PM
 Modified: 6/13/2013 5:23:43 PM

Electrophoresis Assay Details

General Analysis Settings

Number of Available Sample and Ladder Wells (Max.) : 12
 Minimum Visible Range [s] : 32
 Maximum Visible Range [s] : 138
 Start Analysis Time Range [s] : 33
 End Analysis Time Range [s] : 137.5
 Ladder Concentration [pg/μl] : 1950
 Uses Standard Area for Ladder Fragments
 Lower Marker Concentration [pg/μl] : 125
 Upper Marker Concentration [pg/μl] : 75
 Used Upper Marker for Quantitation
 Standard Curve Fit is Point to Point
 Show Data Aligned to Lower and Upper Marker

Integrator Settings

Integration Start Time [s] : 33.05
 Integration End Time [s] : 137
 Slope Threshold : 0.8
 Height Threshold [FU] : 5
 Area Threshold : 0.1
 Width Threshold [s] : 0.6
 Baseline Plateau [s] : 0.5

Filter Settings

Filter Width [s] : 0.5
 Polynomial Order : 4

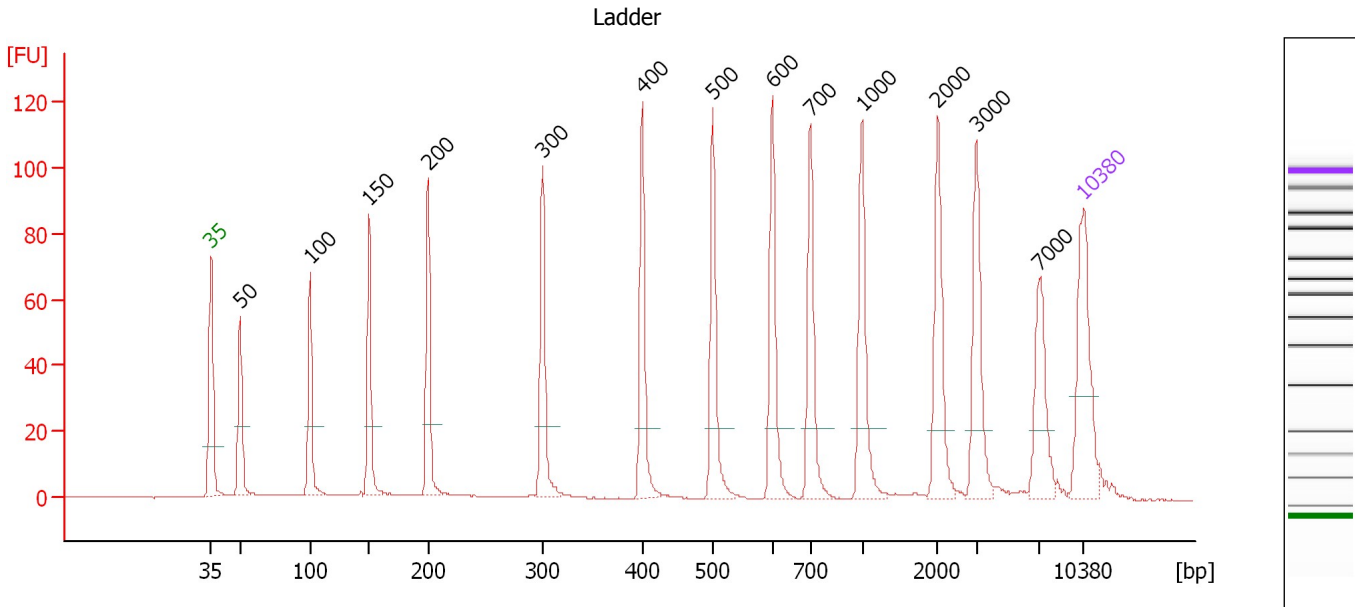
Ladder

Ladder Peak	Size	Area
1	35	160
2	50	210
3	100	208
4	150	221
5	200	242
6	300	270
7	400	305
8	500	306
9	600	336
10	700	321
11	1000	366
12	2000	413
13	3000	411
14	7000	400
15	10380	214

Assay Class: High Sensitivity DNA Assay
 Data Path: C:\...ents and Settings\Bioanalyzer\2013-06-13\2013-06-13_007.xad

Created: 6/13/2013 4:43:17 PM
 Modified: 6/13/2013 5:23:43 PM

Electropherogram Summary



Overall Results for Ladder

Noise: 0.2

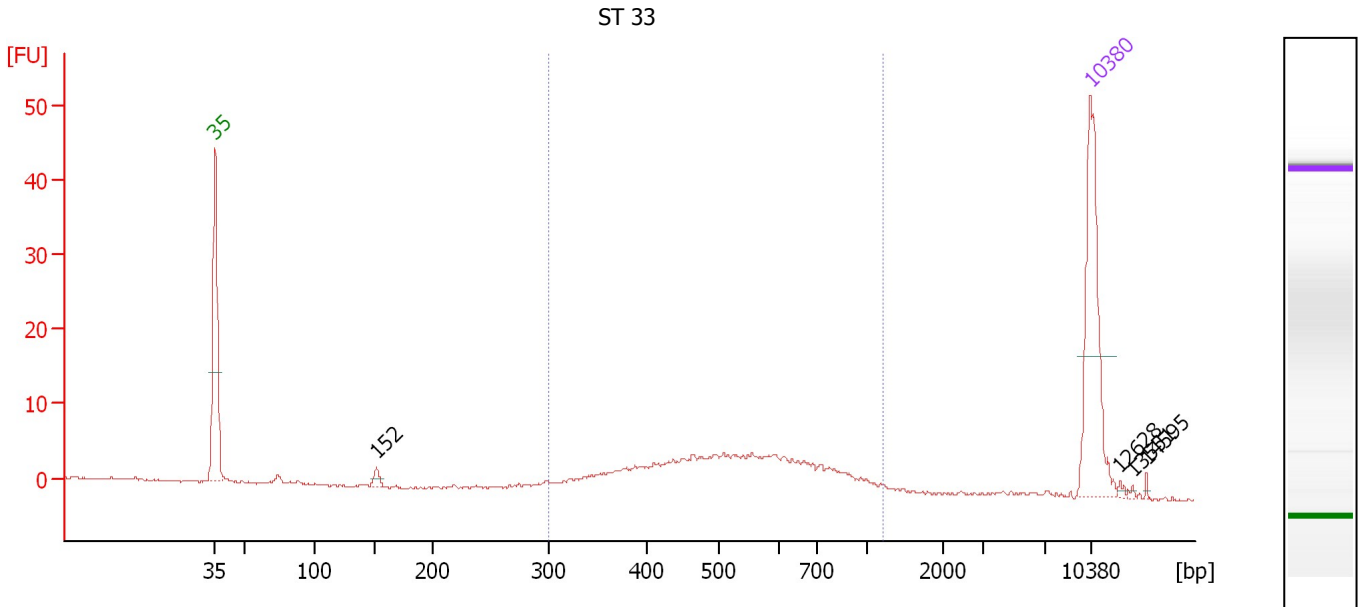
Peak table for Ladder

Peak	Size [bp]	Conc. [pg/μl]	Molarity [pmol/l]	Observations
1	35	125.00	5,411.3	Lower Marker
2	50	150.00	4,545.5	Ladder Peak
3	100	150.00	2,272.7	Ladder Peak
4	150	150.00	1,515.2	Ladder Peak
5	200	150.00	1,136.4	Ladder Peak
6	300	150.00	757.6	Ladder Peak
7	400	150.00	568.2	Ladder Peak
8	500	150.00	454.5	Ladder Peak
9	600	150.00	378.8	Ladder Peak
10	700	150.00	324.7	Ladder Peak
11	1,000	150.00	227.3	Ladder Peak
12	2,000	150.00	113.6	Ladder Peak
13	3,000	150.00	75.8	Ladder Peak
14	7,000	150.00	32.5	Ladder Peak
15	10,380	75.00	10.9	Upper Marker

Assay Class: High Sensitivity DNA Assay
 Data Path: C:\...ents and Settings\Bioanalyzer\2013-06-13\2013-06-13_007.xad

Created: 6/13/2013 4:43:17 PM
 Modified: 6/13/2013 5:23:43 PM

Electropherogram Summary Continued ...



Setpoint Deviations for sample 1 : ST 33

Height Threshold [FU] : 1

Overall Results for sample 1 : ST 33

Number of peaks found: 4 Corr. Area 1: 103.1
 Noise: 0.2

Peak table for sample 1 : ST 33

Peak	Size [bp]	Conc. [pg/μl]	Molarity [pmol/l]	Observations
1	35	125.00	5,411.3	Lower Marker
2	152	6.73	67.1	
3	10,380	75.00	10.9	Upper Marker
4	12,628	0.00	0.0	
5	13,551	0.00	0.0	
6	14,595	0.00	0.0	

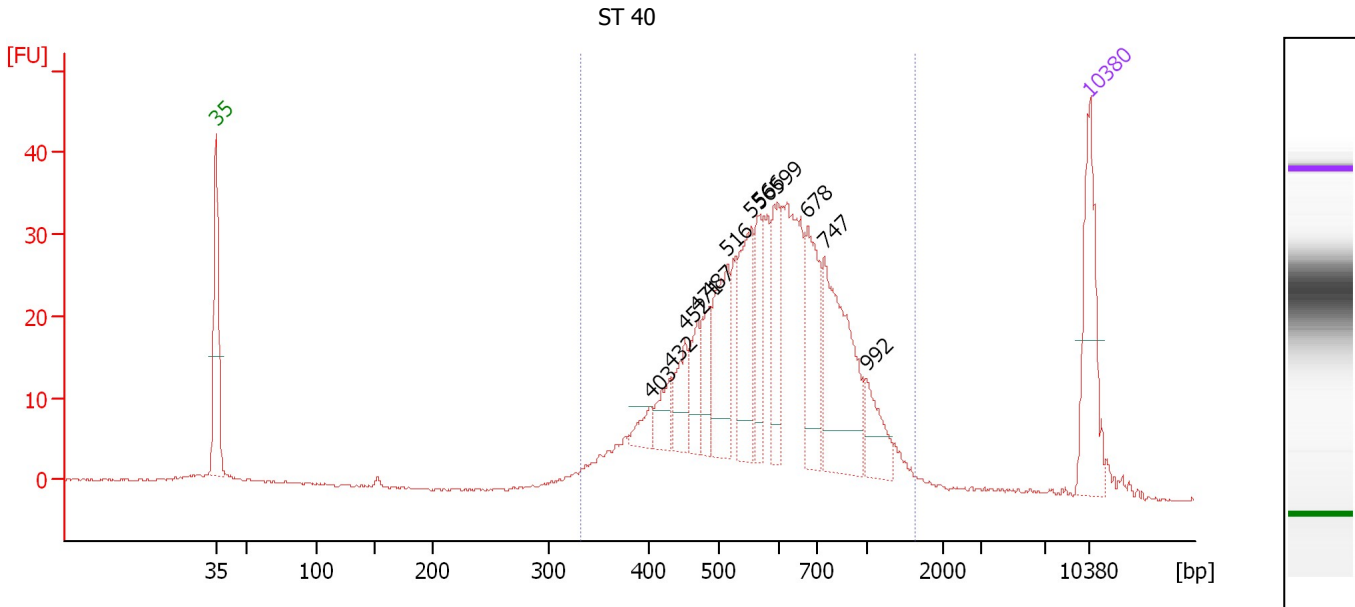
Region table for sample 1 : ST 33

From [bp]	To [bp]	Average Size [bp]	Molarity [pmol/l]	Conc. [pg/μl]	Corr. Area	% of Total	Size distribution in CV [%]	Color
300	1,202	554	571.6	188.31	103.1	90	29.7	Blue

Assay Class: High Sensitivity DNA Assay
 Data Path: C:\...ents and Settings\Bioanalyzer\2013-06-13\2013-06-13_007.xad

Created: 6/13/2013 4:43:17 PM
 Modified: 6/13/2013 5:23:43 PM

Electropherogram Summary Continued ...



Overall Results for sample 2 : ST 40

Number of peaks found: 12 Corr. Area 1: 587.4
 Noise: 0.1

Peak table for sample 2 : ST 40

Peak	Size [bp]	Conc. [pg/μl]	Molarity [pmol/l]	Observations
1	35	125.00	5,411.3	Lower Marker
2	403	17.34	65.2	
3	432	28.46	99.8	
4	452	37.18	124.7	
5	471	37.13	119.5	
6	487	35.24	109.7	
7	516	82.13	241.4	
8	556	88.30	240.7	
9	566	48.26	129.1	
10	599	54.52	137.8	
11	678	83.22	186.0	
12	747	140.44	284.7	
13	992	33.61	51.4	
14	10,380	75.00	10.9	Upper Marker

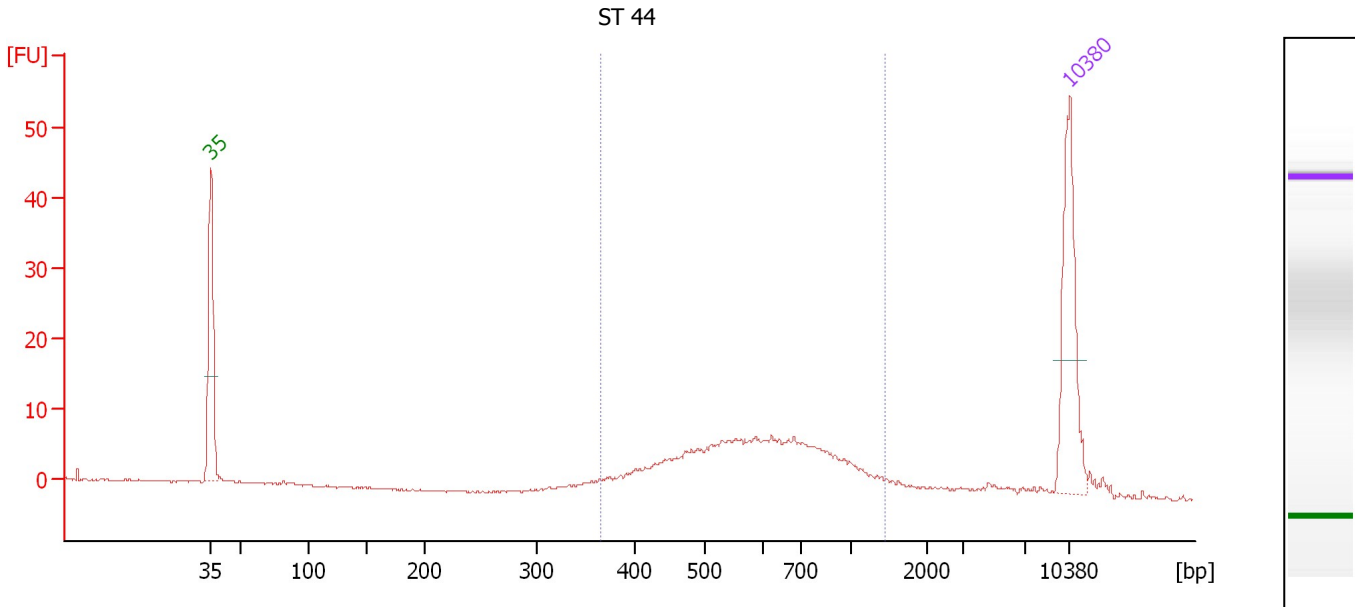
Region table for sample 2 : ST 40

From [bp]	To [bp]	Average Size [bp]	Molarity [pmol/l]	Conc. [pg/μl]	Corr. Area	% of Total	Size distribution in CV [%]	Color
333	1,617	632	3,124.4	1,169.43	587.4	94	32.4	Blue

Assay Class: High Sensitivity DNA Assay
 Data Path: C:\...ents and Settings\Bioanalyzer\2013-06-13\2013-06-13_007.xad

Created: 6/13/2013 4:43:17 PM
 Modified: 6/13/2013 5:23:43 PM

Electropherogram Summary Continued ...



Overall Results for sample 3 : ST 44

Number of peaks found: 0 Corr. Area 1: 142.3
 Noise: 0.2

Peak table for sample 3 : ST 44

Peak	Size [bp]	Conc. [pg/μl]	Molarity [pmol/l]	Observations
1	35	125.00	5,411.3	Lower Marker
2	10,380	75.00	10.9	Upper Marker

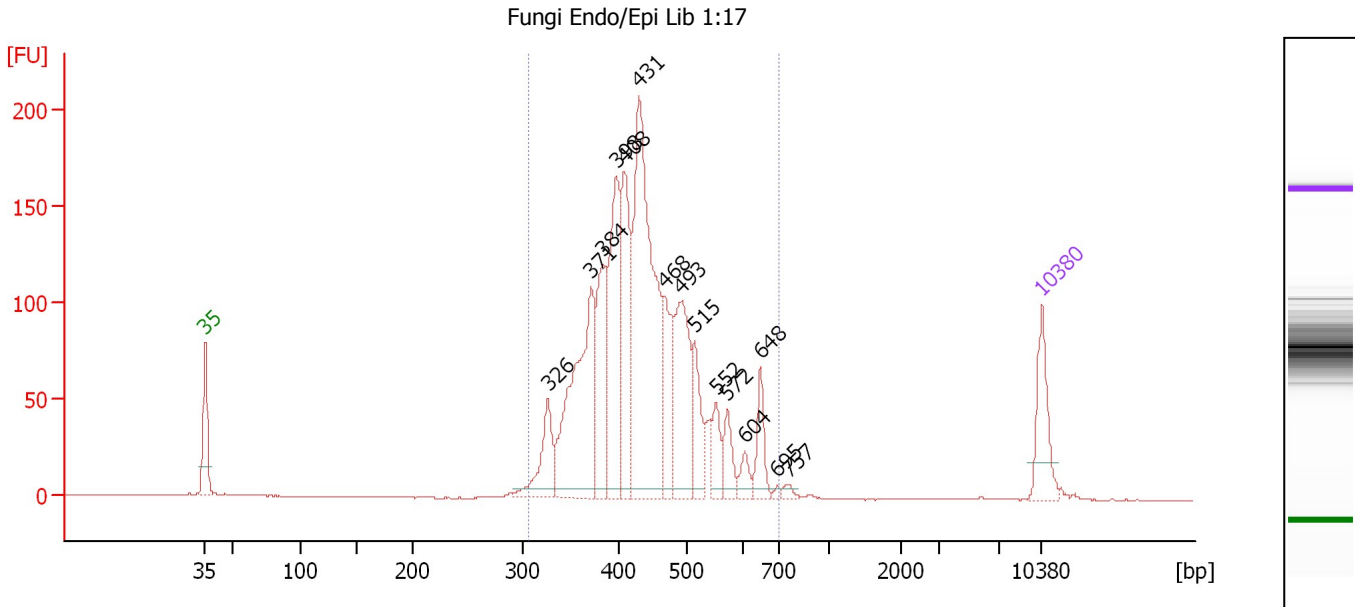
Region table for sample 3 : ST 44

From [bp]	To [bp]	Average Size [bp]	Molarity [pmol/l]	Conc. [pg/μl]	Corr. Area	% of Total	Size distribution in CV [%]	Color
364	1,450	646	625.8	238.04	142.3	82	32.9	Blue

Assay Class: High Sensitivity DNA Assay
 Data Path: C:\...ents and Settings\Bioanalyzer\2013-06-13\2013-06-13_007.xad

Created: 6/13/2013 4:43:17 PM
 Modified: 6/13/2013 5:23:43 PM

Electropherogram Summary Continued ...



Overall Results for sample 4 : Fungi Endo/Epi Lib 1:17

Number of peaks found: 15 Corr. Area 1: 2,022.0
 Noise: 0.1

Peak table for sample 4 : Fungi Endo/Epi Lib 1:17

Peak	Size [bp]	Conc. [pg/µl]	Molarity [pmol/l]	Observations
1	35	125.00	5,411.3	Lower Marker
2	326	107.41	499.0	
3	371	372.77	1,521.0	
4	384	172.18	679.1	
5	398	265.17	1,010.6	
6	408	224.65	833.5	
7	431	565.20	1,989.2	
8	468	136.09	440.9	
9	493	211.72	650.8	
10	515	91.76	270.0	
11	552	48.97	134.4	
12	572	48.16	127.6	
13	604	25.25	63.3	
14	648	56.89	133.0	
15	695	5.68	12.4	
16	757	9.22	18.5	
17	10,380	75.00	10.9	Upper Marker

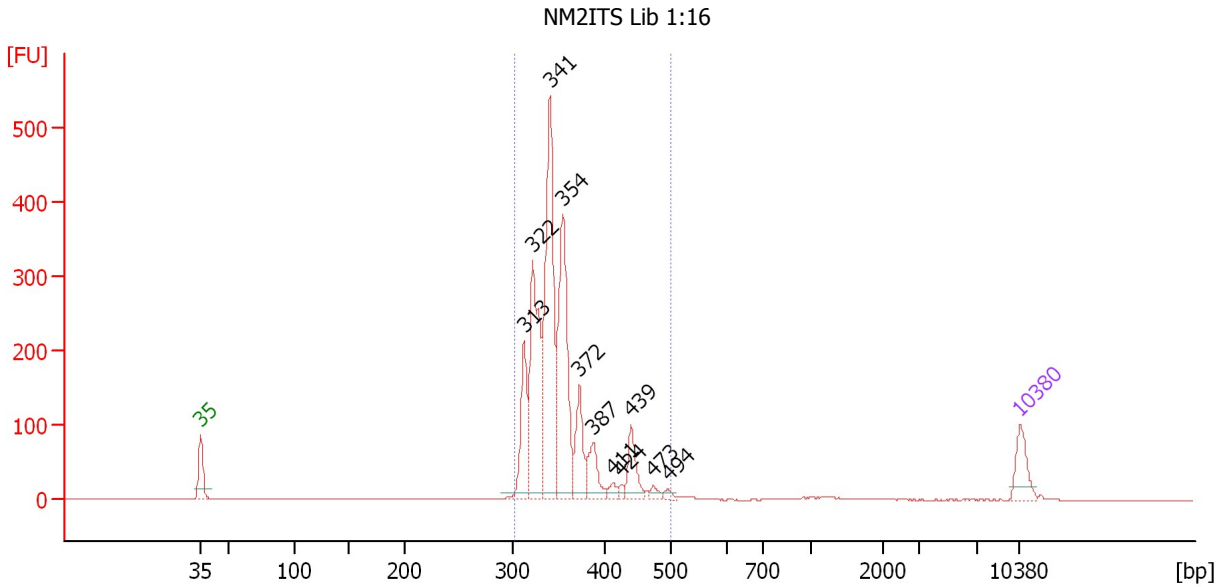
Region table for sample 4 : Fungi Endo/Epi Lib 1:17

From [bp]	To [bp]	Average Size [bp]	Molarity [pmol/l]	Conc. [pg/µl]	Corr. Area	% of Total	Size distribution in CV [%]	Color
306	699	439	8,390.5	2,354.87	2,022.0	98	16.6	Blue

Assay Class: High Sensitivity DNA Assay
 Data Path: C:\...ents and Settings\Bioanalyzer\2013-06-13\2013-06-13_007.xad

Created: 6/13/2013 4:43:17 PM
 Modified: 6/13/2013 5:23:43 PM

Electropherogram Summary Continued ...



Setpoint Deviations for sample 5 : NM2ITS Lib 1:16

Height Threshold [FU] : 10

Overall Results for sample 5 : NM2ITS Lib 1:16

Number of peaks found: 11 Corr. Area 1: 2,160.4
 Noise: 0.1

Peak table for sample 5 : NM2ITS Lib 1:16

Peak	Size [bp]	Conc. [pg/μl]	Molarity [pmol/l]	Observations
1	35	125.00	5,411.3	Lower Marker
2	313	237.52	1,150.7	
3	322	503.18	2,368.6	
4	341	718.69	3,196.3	
5	354	552.74	2,363.4	
6	372	158.86	647.0	
7	387	116.30	455.5	
8	411	23.24	85.6	
9	424	15.70	56.1	
10	439	107.99	373.0	
11	473	21.26	68.2	
12	494	16.28	49.9	
13	10,380	75.00	10.9	Upper Marker

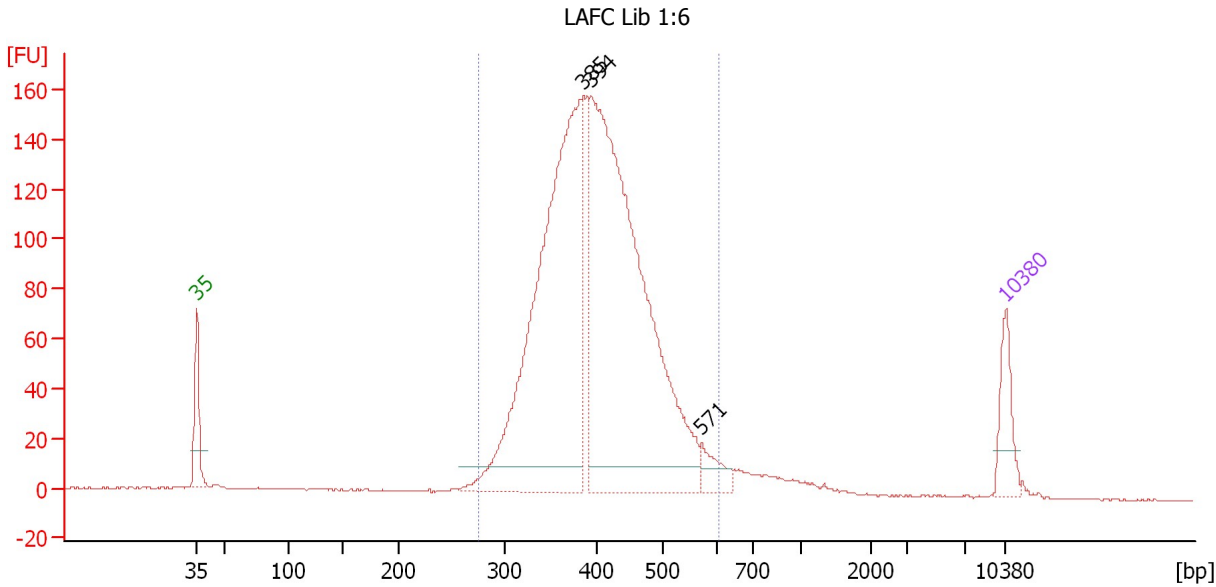
Region table for sample 5 : NM2ITS Lib 1:16

From [bp]	To [bp]	Average Size [bp]	Molarity [pmol/l]	Conc. [pg/μl]	Corr. Area	% of Total	Size distribution in CV [%]	Color
302	500	352	10,726.0	2,470.61	2,160.4	97	10.0	Blue

Assay Class: High Sensitivity DNA Assay
 Data Path: C:\...ents and Settings\Bioanalyzer\2013-06-13\2013-06-13_007.xad

Created: 6/13/2013 4:43:17 PM
 Modified: 6/13/2013 5:23:43 PM

Electropherogram Summary Continued ...



Setpoint Deviations for sample 6 : LAFC Lib 1:6

Height Threshold [FU] : 10

Overall Results for sample 6 : LAFC Lib 1:6

Number of peaks found: 3 Corr. Area 1: 2,182.7
 Noise: 0.2

Peak table for sample 6 : LAFC Lib 1:6

Peak	Size [bp]	Conc. [pg/μl]	Molarity [pmol/l]	Observations
1	35	125.00	5,411.3	Lower Marker
2	385	1,282.73	5,049.5	
3	394	1,496.09	5,751.5	
4	571	57.38	152.4	
5	10,380	75.00	10.9	Upper Marker

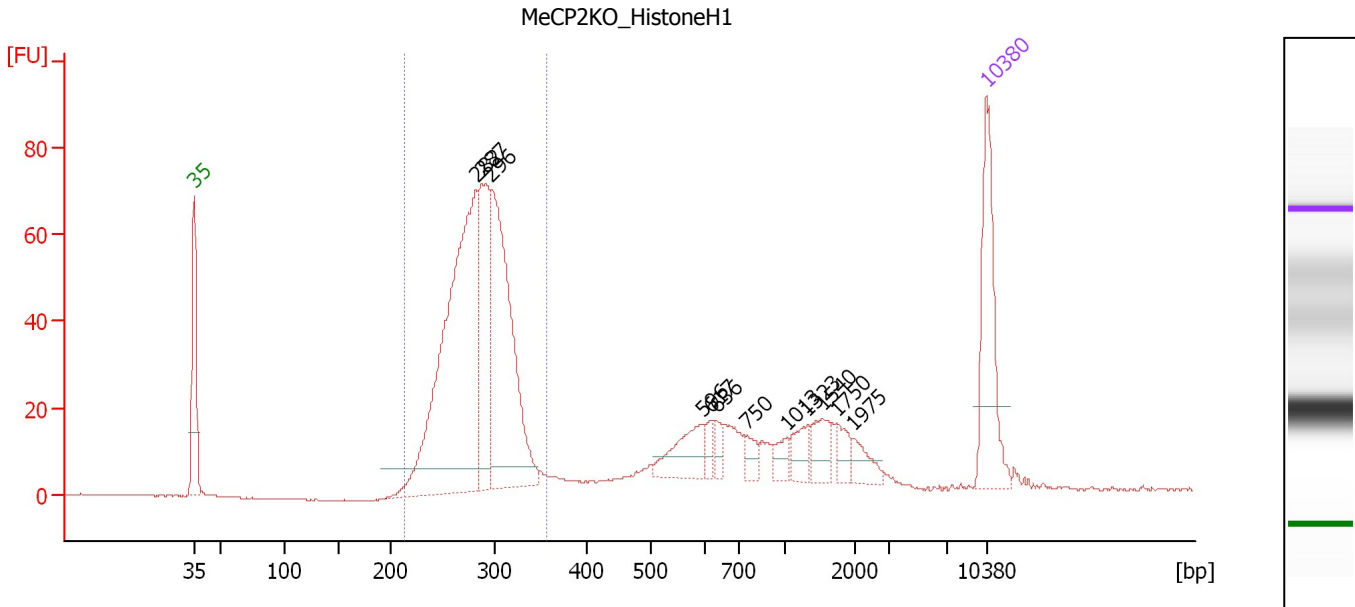
Region table for sample 6 : LAFC Lib 1:6

From [bp]	To [bp]	Average Size [bp]	Molarity [pmol/l]	Conc. [pg/μl]	Corr. Area	% of Total	Size distribution in CV [%]	Color
276	604	406	11,610.6	3,025.94	2,182.7	94	15.4	Blue

Assay Class: High Sensitivity DNA Assay
 Data Path: C:\...ents and Settings\Bioanalyzer\2013-06-13\2013-06-13_007.xad

Created: 6/13/2013 4:43:17 PM
 Modified: 6/13/2013 5:23:43 PM

Electropherogram Summary Continued ...



Overall Results for sample 7 : MeCP2KO_HistoneH1

Number of peaks found: 12 Corr. Area 1: 683.5
 Noise: 0.1

Peak table for sample 7 : MeCP2KO_HistoneH1

Peak	Size [bp]	Conc. [pg/μl]	Molarity [pmol/l]	Observations
1	35	125.00	5,411.3	Lower Marker
2	282	414.33	2,228.2	
3	287	136.75	722.3	
4	296	258.69	1,323.8	
5	596	41.17	104.6	
6	617	8.95	22.0	
7	636	11.00	26.2	
8	750	12.94	26.1	
9	1,013	12.93	19.3	
10	1,323	18.36	21.0	
11	1,540	20.18	19.9	
12	1,750	13.19	11.4	
13	1,975	14.49	11.1	
14	10,380	75.00	10.9	Upper Marker

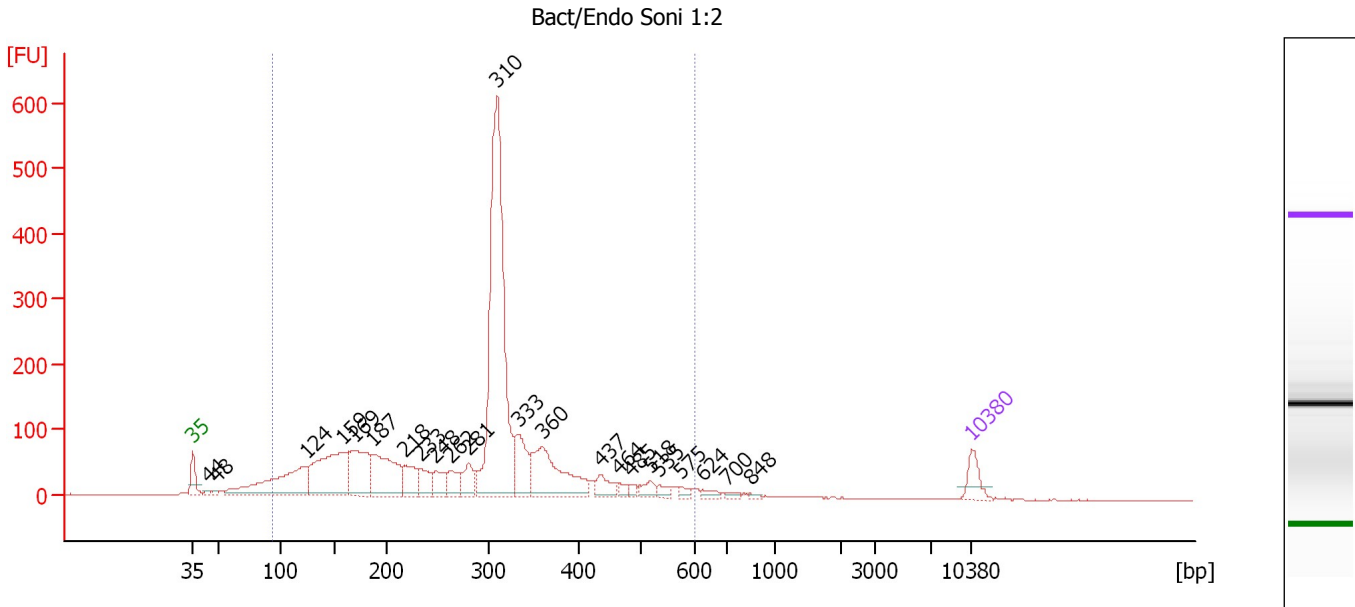
Region table for sample 7 : MeCP2KO_HistoneH1

From [bp]	To [bp]	Average Size [bp]	Molarity [pmol/l]	Conc. [pg/μl]	Corr. Area	% of Total	Size distribution in CV [%]	Color
213	356	283	4,475.1	830.32	683.5	67	9.4	Blue

Assay Class: High Sensitivity DNA Assay
 Data Path: C:\...ents and Settings\Bioanalyzer\2013-06-13\2013-06-13_007.xad

Created: 6/13/2013 4:43:17 PM
 Modified: 6/13/2013 5:23:43 PM

Electropherogram Summary Continued ...



Overall Results for sample 8 : Bact/Endo Soni 1:2

Number of peaks found: 23 Corr. Area 1: 3,533.1
 Noise: 0.6

Peak table for sample 8 : Bact/Endo Soni 1:2

Peak	Size [bp]	Conc. [pg/μl]	Molarity [pmol/l]	Observations
1	35	125.00	5,411.3	Lower Marker
2	44	14.99	521.5	
3	48	15.17	477.4	
4	124	612.29	7,498.4	
5	159	673.86	6,436.7	
6	169	414.61	3,710.1	
7	187	456.60	3,706.8	
8	218	168.19	1,171.2	
9	233	109.53	713.2	
10	248	111.75	683.2	
11	262	107.90	623.0	
12	281	128.43	693.4	
13	310	1,842.21	9,018.2	
14	333	246.45	1,121.8	
15	360	468.63	1,973.2	
16	437	87.48	303.1	
17	464	30.17	98.4	
18	485	24.95	78.0	
19	518	51.92	151.8	
20	535	33.65	95.3	
21	575	20.99	55.3	
22	624	27.09	65.8	
23	700	16.43	35.6	
24	848	9.51	17.0	
25	10,380	75.00	10.9	Upper Marker

Assay Class: High Sensitivity DNA Assay
Data Path: C:\...ents and Settings\Bioanalyzer\2013-06-13\2013-06-13_007.xad

Created: 6/13/2013 4:43:17 PM
Modified: 6/13/2013 5:23:43 PM

Electropherogram Summary Continued ...

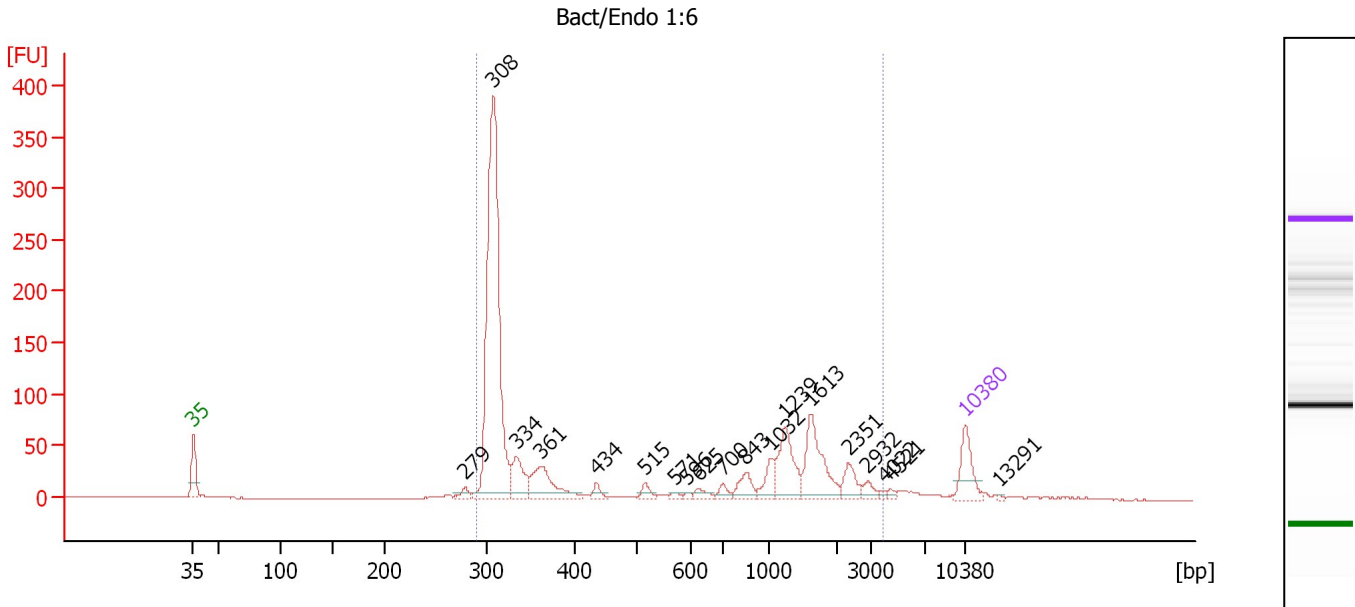
... Region table for sample 8 : Bact/Endo Soni 1:2

From [bp]	To [bp]	Average Size [bp]	Molarity [pmol/l]	Conc. [pg/μl]	Corr. Area	% of Total	Size distribution in CV [%]	Color
93	605	287	36,441.3	5,457.09	3,533.1	93	34.7	■

Assay Class: High Sensitivity DNA Assay
 Data Path: C:\...ents and Settings\Bioanalyzer\2013-06-13\2013-06-13_007.xad

Created: 6/13/2013 4:43:17 PM
 Modified: 6/13/2013 5:23:43 PM

Electropherogram Summary Continued ...



Overall Results for sample 9 : Bact/Endo 1:6

Number of peaks found: 19 Corr. Area 1: 1,384.1
 Noise: 0.1

Peak table for sample 9 : Bact/Endo 1:6

Peak	Size [bp]	Conc. [pg/μl]	Molarity [pmol/l]	Observations
1	35	125.00	5,411.3	Lower Marker
2	279	19.93	108.3	
3	308	1,100.16	5,416.5	
4	334	103.17	468.4	
5	361	141.75	595.0	
6	434	21.02	73.4	
7	515	22.98	67.6	
8	571	8.78	23.3	
9	596	6.80	17.3	
10	625	19.11	46.3	
11	700	20.73	44.9	
12	843	48.48	87.2	
13	1,032	50.68	74.4	
14	1,239	125.89	154.0	
15	1,613	157.47	147.9	
16	2,351	43.78	28.2	
17	2,932	21.52	11.1	
18	4,022	6.95	2.6	
19	4,521	7.08	2.4	
20	10,380	75.00	10.9	Upper Marker
21	13,291	0.00	0.0	

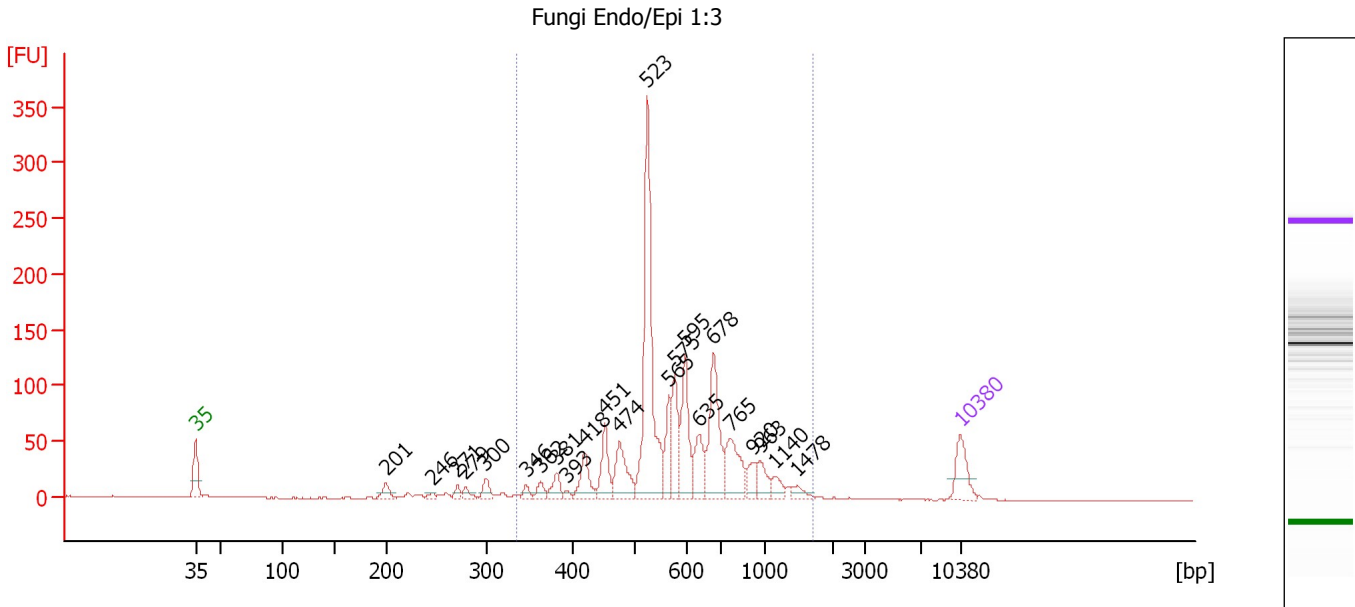
Region table for sample 9 : Bact/Endo 1:6

From [bp]	To [bp]	Average Size [bp]	Molarity [pmol/l]	Conc. [pg/μl]	Corr. Area	% of Total	Size distribution in CV [%]	Color
291	3,967	807	7,269.9	1,926.54	1,384.1	93	88.3	Blue

Assay Class: High Sensitivity DNA Assay
 Data Path: C:\...ents and Settings\Bioanalyzer\2013-06-13\2013-06-13_007.xad

Created: 6/13/2013 4:43:17 PM
 Modified: 6/13/2013 5:23:43 PM

Electropherogram Summary Continued ...



Overall Results for sample 10 : Fungi Endo/Epi 1:3

Number of peaks found: 23 Corr. Area 1: 1,272.3
 Noise: 0.3


Peak table for sample 10 : Fungi Endo/Epi 1:3

Peak	Size [bp]	Conc. [pg/μl]	Molarity [pmol/l]	Observations
1	35	125.00	5,411.3	Lower Marker
2	201	37.02	279.4	
3	246	11.35	69.8	
4	271	19.52	109.0	
5	279	21.65	117.4	
6	300	36.41	184.2	
7	346	18.92	82.9	
8	362	28.41	118.8	
9	381	43.40	172.5	
10	393	10.97	42.3	
11	418	85.36	309.1	
12	451	104.32	350.2	
13	474	132.39	423.4	
14	523	595.84	1,725.8	
15	565	99.11	265.8	
16	575	133.96	352.9	
17	595	176.16	448.2	
18	635	105.20	251.1	
19	678	239.77	535.7	
20	765	145.50	288.2	
21	920	45.75	75.3	
22	963	50.07	78.8	
23	1,140	32.41	43.1	
24	1,478	22.78	23.4	
25	10,380	75.00	10.9	Upper Marker

Assay Class: High Sensitivity DNA Assay
Data Path: C:\...ents and Settings\Bioanalyzer\2013-06-13\2013-06-13_007.xad

Created: 6/13/2013 4:43:17 PM
Modified: 6/13/2013 5:23:43 PM

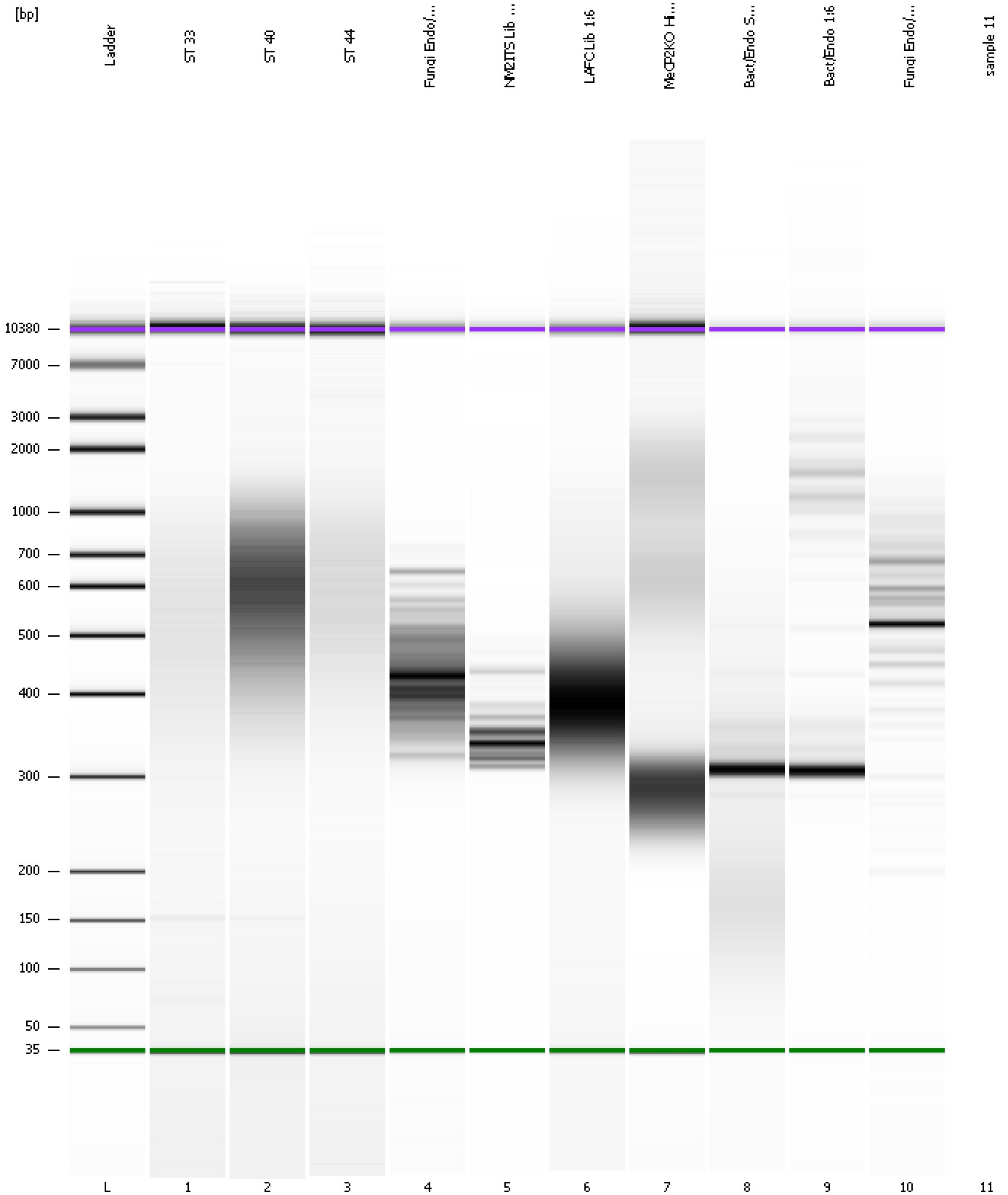
Electropherogram Summary Continued ...**... Region table for sample 10 : Fungi Endo/Epi 1:3**

From [bp]	To [bp]	Average Size [bp]	Molarity [pmol/l]	Conc. [pg/μl]	Corr. Area	% of Total	Size distribution in CV [%]	Co lor
335	1,710	624	5,574.4	2,094.17	1,272.3	93	31.8	

Assay Class: High Sensitivity DNA Assay
Data Path: C:\...ents and Settings\Bioanalyzer\2013-06-13\2013-06-13_007.xad

Created: 6/13/2013 4:43:17 PM
Modified: 6/13/2013 5:23:43 PM

Gel Image



Assay Class: High Sensitivity DNA Assay
Data Path: C:\...ents and Settings\Bioanalyzer\2013-06-13\2013-06-13_007.xad

Created: 6/13/2013 4:43:17 PM
Modified: 6/13/2013 5:23:43 PM

Invalid Samples

Sample 11 has not been run, no results available.

Assay Class: High Sensitivity DNA Assay
 Data Path: C:\...ents and Settings\Bioanalyzer\2013-06-13\2013-06-13_007.xad

Created: 6/13/2013 4:43:17 PM
 Modified: 6/13/2013 5:23:43 PM

Run Logbook

Description	Number	Source	Category	Sub Category	Time	Time Zone	User	Host
Run ended on port 1 (Number of wells acquired: 11)		Instrument	Run		6/13/2013 5:21:45 PM	(GMT --07:00) Pacific Standard Time	UC Davis	D8XSMGH1
Run started on port 1 (File: C:\Documents and Settings\Bioanalyzer\2013-06-13\2013-06-13_007.xad)		Instrument	Run		6/13/2013 4:43:23 PM	(GMT --07:00) Pacific Standard Time	UC Davis	D8XSMGH1
Product Number : G2938B		Instrument	Run		6/13/2013 4:43:23 PM	(GMT --07:00) Pacific Standard Time	UC Davis	D8XSMGH1
Name :		Instrument	Run		6/13/2013 4:43:23 PM	(GMT --07:00) Pacific Standard Time	UC Davis	D8XSMGH1
Vendor : Agilent Technologies		Instrument	Run		6/13/2013 4:43:23 PM	(GMT --07:00) Pacific Standard Time	UC Davis	D8XSMGH1
Serial# : DE13701086		Instrument	Run		6/13/2013 4:43:23 PM	(GMT --07:00) Pacific Standard Time	UC Davis	D8XSMGH1
Firmware : C.01.069		Instrument	Run		6/13/2013 4:43:23 PM	(GMT --07:00) Pacific Standard Time	UC Davis	D8XSMGH1
Cartridge : Electrode		Instrument	Run		6/13/2013 4:43:23 PM	(GMT --07:00) Pacific Standard Time	UC Davis	D8XSMGH1