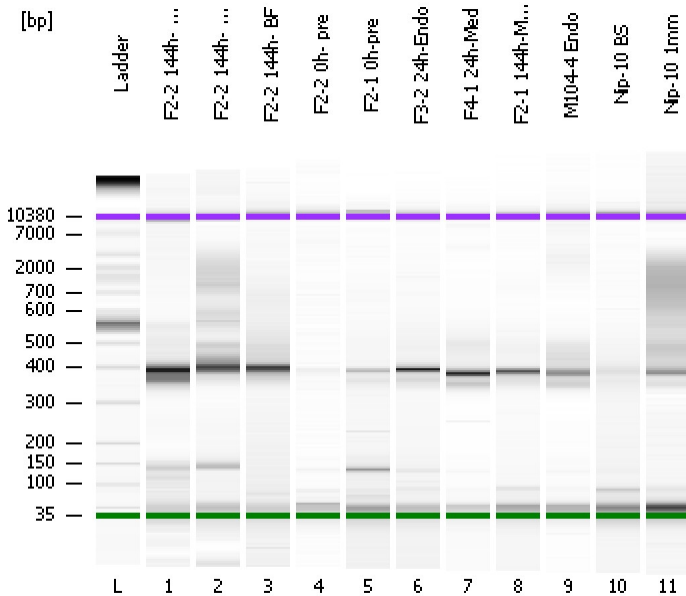


Assay Class: High Sensitivity DNA Assay
Data Path: C:\...ents and Settings\Bioanalyzer\2013-06-14\2013-06-14_001.xad

Created: 6/14/2013 1:40:13 PM
Modified: 6/14/2013 2:24:50 PM

Electrophoresis File Run Summary



Instrument Information:

Instrument Name: DE13701086 Firmware: C.01.069
Serial#: DE13701086 Type: G2938B

Assay Information:

Assay Origin Path: C:\Program Files\Agilent\2100 bioanalyzer\2100 expert\assays\dsDNA\High Sensitivity DNA.xsy
Assay Class: High Sensitivity DNA Assay
Version: 1.03
Assay Comments: Copyright © 2003-2010 Agilent Technologies

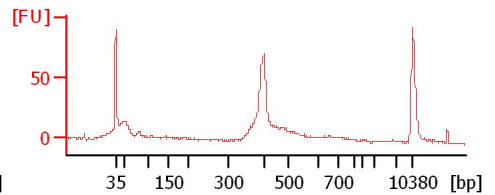
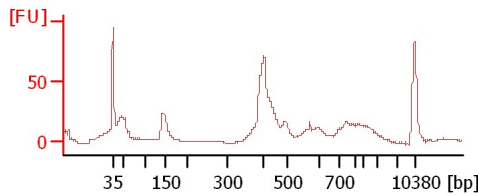
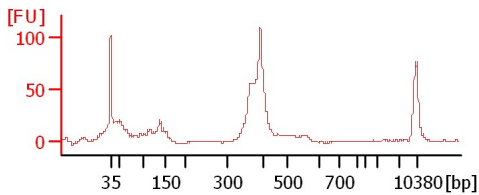
Chip Information:

Chip Lot #:
Reagent Kit Lot #:
Chip Comments:

F2-2 144h- Endo

F2-2 144h- Med

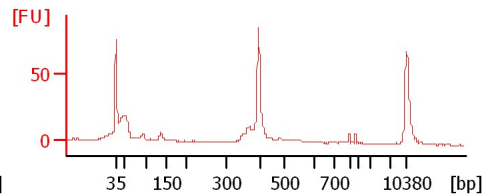
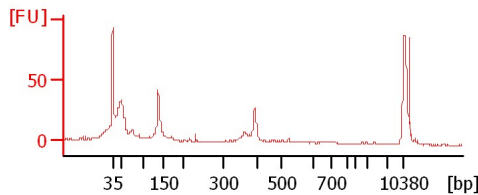
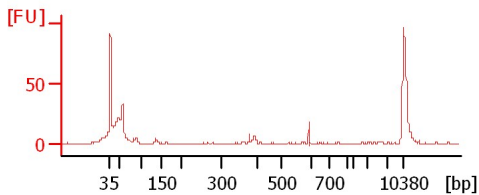
F2-2 144h- BF



F2-2 0h- pre

F2-1 0h- pre

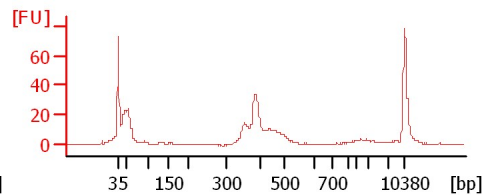
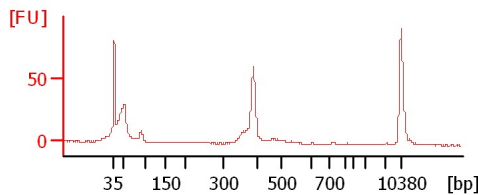
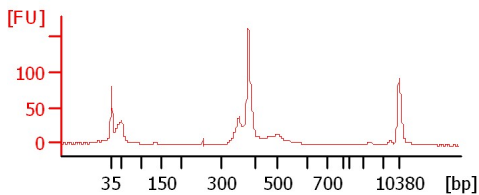
F3-2 24h-Endo



F4-1 24h-Med

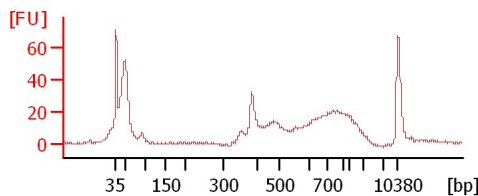
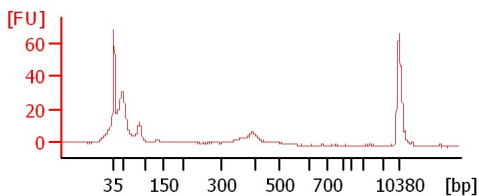
F2-1 144h-Med

M104-4 Endo



Nip-10 BS

Nip-10 1mm



Assay Class: High Sensitivity DNA Assay
Data Path: C:\...ents and Settings\Bioanalyzer\2013-06-14\2013-06-14_001.xad

Created: 6/14/2013 1:40:13 PM
Modified: 6/14/2013 2:24:50 PM

Electrophoresis File Run Summary (Chip Summary)

Sample Name	Sample Comment	Rest. Digest	Status	Observation	Result Label	Result Color
F2-2 144h- Endo		<input type="checkbox"/>	✓			
F2-2 144h- Med		<input type="checkbox"/>	✓			
F2-2 144h- BF		<input type="checkbox"/>	✓			
F2-2 0h- pre		<input type="checkbox"/>	✓			
F2-1 0h-pre		<input type="checkbox"/>	✓			
F3-2 24h-Endo		<input type="checkbox"/>	✓			
F4-1 24h-Med		<input type="checkbox"/>	✓			
F2-1 144h-Med		<input type="checkbox"/>	✓			
M104-4 Endo		<input type="checkbox"/>	✓			
Nip-10 BS		<input type="checkbox"/>	✓			
Nip-10 1mm		<input type="checkbox"/>	✓			
Ladder		<input type="checkbox"/>	✓			

Chip Lot #

Reagent Kit Lot #

Chip Comments :

Assay Class: High Sensitivity DNA Assay
 Data Path: C:\...ents and Settings\Bioanalyzer\2013-06-14\2013-06-14_001.xad

Created: 6/14/2013 1:40:13 PM
 Modified: 6/14/2013 2:24:50 PM

Electrophoresis Assay Details

General Analysis Settings

Number of Available Sample and Ladder Wells (Max.) : 12
 Minimum Visible Range [s] : 32
 Maximum Visible Range [s] : 138
 Start Analysis Time Range [s] : 33
 End Analysis Time Range [s] : 137.5
 Ladder Concentration [pg/μl] : 1950
 Uses Standard Area for Ladder Fragments
 Lower Marker Concentration [pg/μl] : 125
 Upper Marker Concentration [pg/μl] : 75
 Used Upper Marker for Quantitation
 Standard Curve Fit is Point to Point
 Show Data Aligned to Lower and Upper Marker

Integrator Settings

Integration Start Time [s] : 33.05
 Integration End Time [s] : 137
 Slope Threshold : 0.8
 Height Threshold [FU] : 5
 Area Threshold : 0.1
 Width Threshold [s] : 0.6
 Baseline Plateau [s] : 0.5

Filter Settings

Filter Width [s] : 0.5
 Polynomial Order : 4

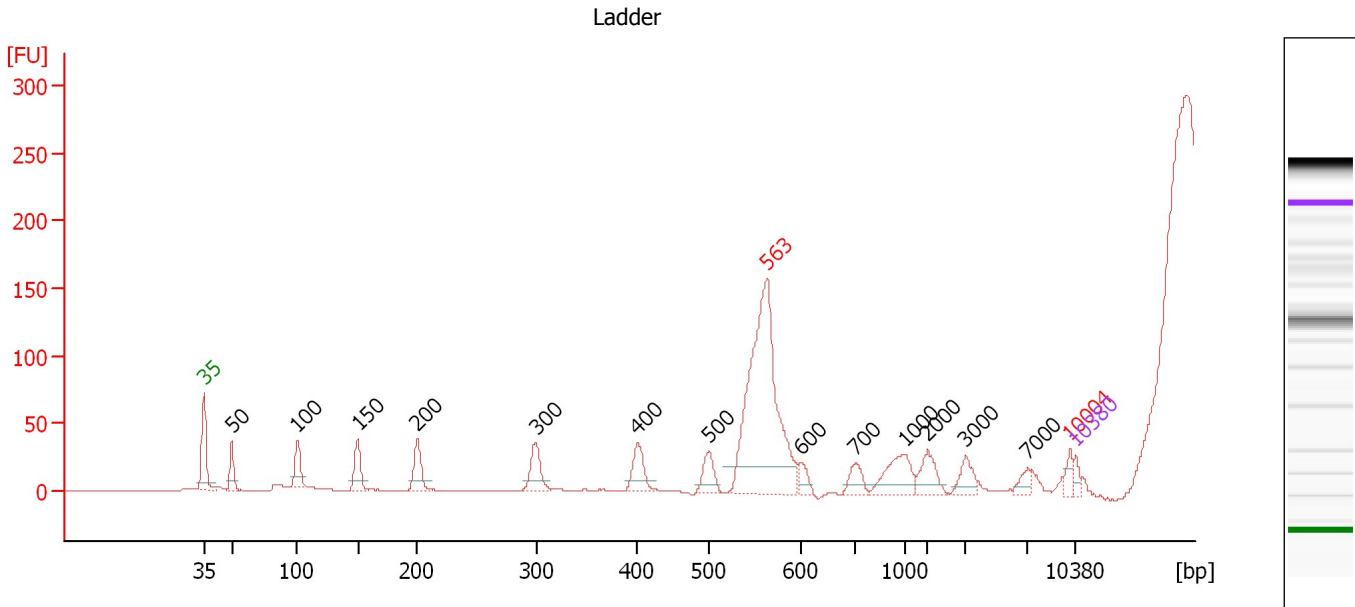
Ladder

Ladder Peak	Size	Area
1	35	160
2	50	210
3	100	208
4	150	221
5	200	242
6	300	270
7	400	305
8	500	306
9	600	336
10	700	321
11	1000	366
12	2000	413
13	3000	411
14	7000	400
15	10380	214

Assay Class: High Sensitivity DNA Assay
 Data Path: C:\...ents and Settings\Bioanalyzer\2013-06-14\2013-06-14_001.xad

Created: 6/14/2013 1:40:13 PM
 Modified: 6/14/2013 2:24:50 PM

Electropherogram Summary



Overall Results for Ladder

Noise: 0.1

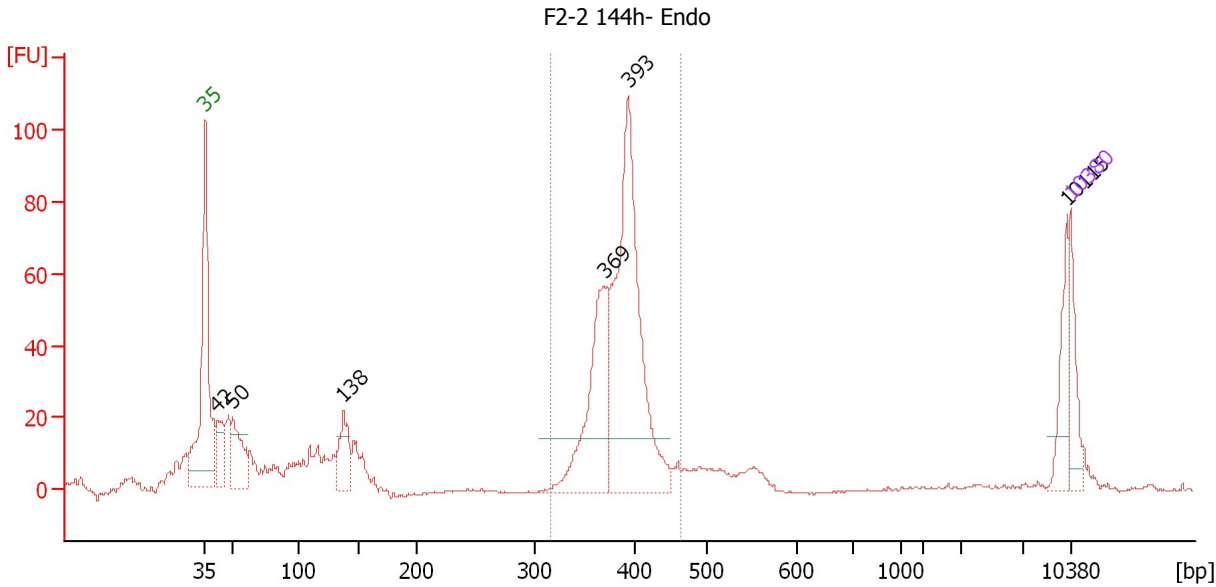
Peak table for Ladder

Peak	Size [bp]	Conc. [pg/μl]	Molarity [pmol/l]	Observations
1	35	125.00	5,411.3	Lower Marker
2	50	150.00	4,545.5	Ladder Peak
3	100	150.00	2,272.7	Ladder Peak
4	150	150.00	1,515.2	Ladder Peak
5	200	150.00	1,136.4	Ladder Peak
6	300	150.00	757.6	Ladder Peak
7	400	150.00	568.2	Ladder Peak
8	500	150.00	454.5	Ladder Peak
9	563	0.00	0.0	excluded peak
10	600	150.00	378.8	Ladder Peak
11	700	150.00	324.7	Ladder Peak
12	1,000	150.00	227.3	Ladder Peak
13	2,000	150.00	113.6	Ladder Peak
14	3,000	150.00	75.8	Ladder Peak
15	7,000	150.00	32.5	Ladder Peak
16	10,004	0.00	0.0	excluded peak
17	10,380	75.00	10.9	Upper Marker

Assay Class: High Sensitivity DNA Assay
 Data Path: C:\...ents and Settings\Bioanalyzer\2013-06-14\2013-06-14_001.xad

Created: 6/14/2013 1:40:13 PM
 Modified: 6/14/2013 2:24:50 PM

Electropherogram Summary Continued ...



Setpoint Deviations for sample 1 : F2-2 144h- Endo

Height Threshold [FU] : 15

Overall Results for sample 1 : F2-2 144h- Endo

Number of peaks found: 6 Corr. Area 1: 446.1
 Noise: 0.3

Peak table for sample 1 : F2-2 144h- Endo

Peak	Size [bp]	Conc. [pg/μl]	Molarity [pmol/l]	Observations
1	35	125.00	5,411.3	Lower Marker
2	42	124.80	4,536.6	
3	50	168.52	5,091.9	
4	138	134.28	1,474.9	
5	369	387.05	1,590.9	
6	393	796.36	3,071.3	
7	10,115	89.91	13.5	
8	10,380	75.00	10.9	Upper Marker

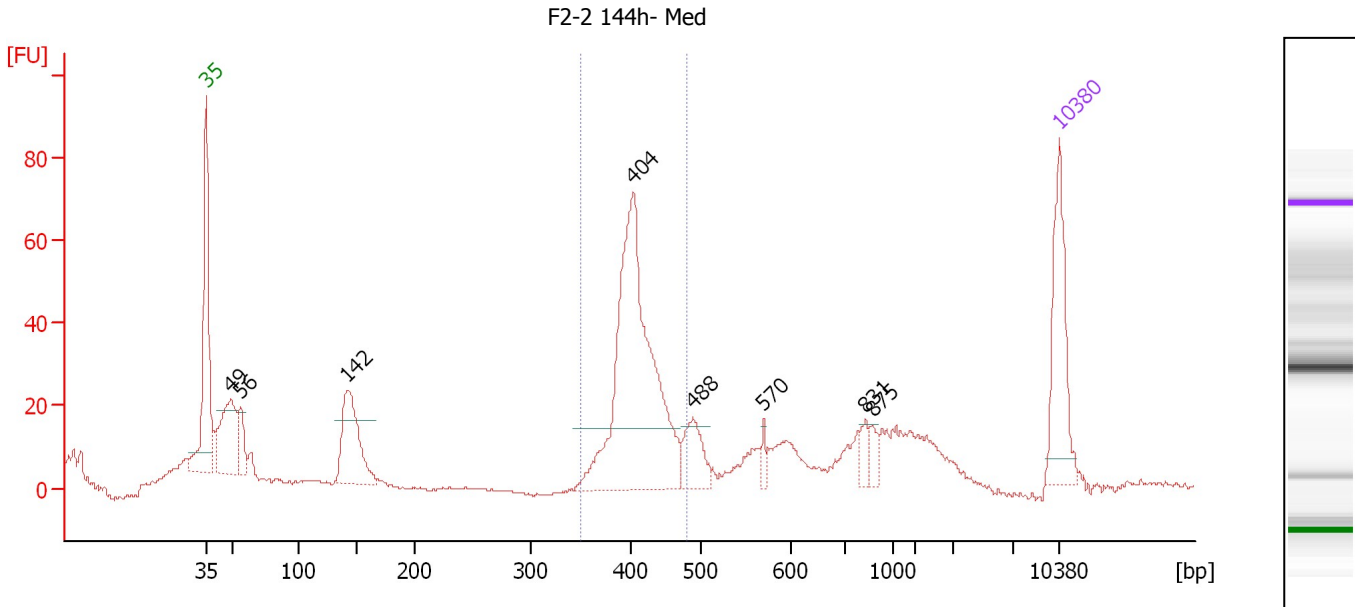
Region table for sample 1 : F2-2 144h- Endo

From [bp]	To [bp]	Average Size [bp]	Molarity [pmol/l]	Conc. [pg/μl]	Corr. Area	% of Total	Size distribution in CV [%]	Color
316	464	385	4,456.5	1,130.96	446.1	56	5.8	Blue

Assay Class: High Sensitivity DNA Assay
 Data Path: C:\...ents and Settings\Bioanalyzer\2013-06-14\2013-06-14_001.xad

Created: 6/14/2013 1:40:13 PM
 Modified: 6/14/2013 2:24:50 PM

Electropherogram Summary Continued ...



Setpoint Deviations for sample 2 : F2-2 144h- Med

Height Threshold [FU] : 15

Overall Results for sample 2 : F2-2 144h- Med

Number of peaks found: 8 Corr. Area 1: 257.3
 Noise: 0.4

Peak table for sample 2 : F2-2 144h- Med

Peak	Size [bp]	Conc. [pg/µl]	Molarity [pmol/l]	Observations
1	35	125.00	5,411.3	Lower Marker
2	49	112.36	3,506.4	
3	56	37.46	1,016.4	
4	142	118.80	1,268.8	
5	404	369.20	1,385.5	
6	488	46.51	144.3	
7	570	9.42	25.0	
8	831	14.25	26.0	
9	875	12.40	21.5	
10	10,380	75.00	10.9	Upper Marker

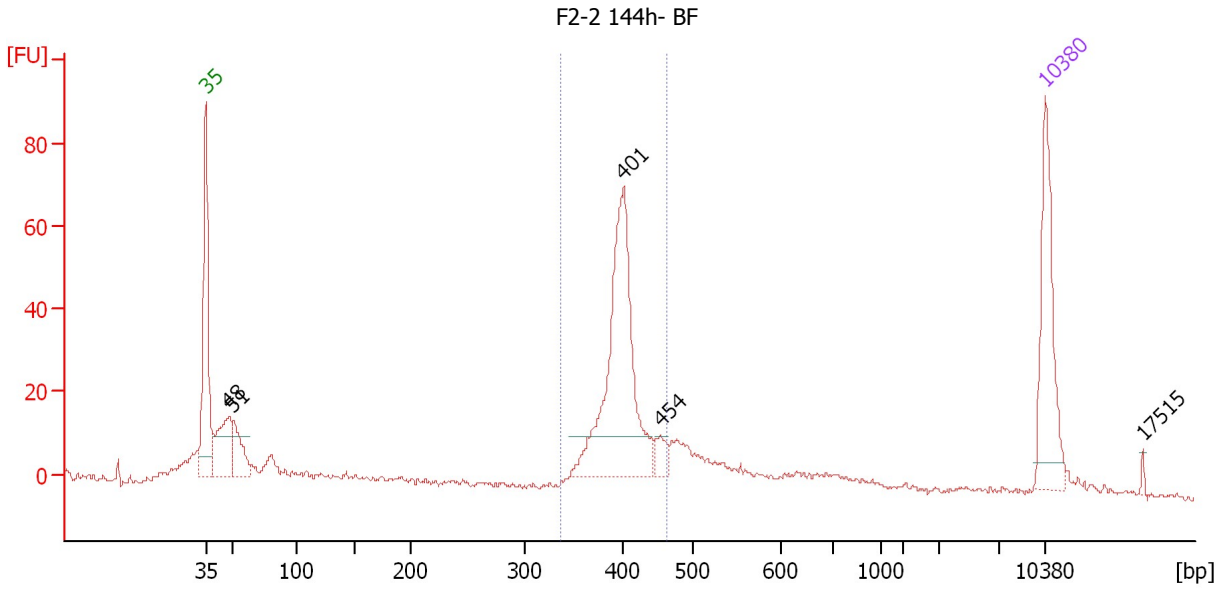
Region table for sample 2 : F2-2 144h- Med

From [bp]	To [bp]	Average Size [bp]	Molarity [pmol/l]	Conc. [pg/µl]	Corr. Area	% of Total	Size distribution in CV [%]	Color
349	481	412	1,152.3	312.48	257.3	48	5.8	Blue

Assay Class: High Sensitivity DNA Assay
 Data Path: C:\...ents and Settings\Bioanalyzer\2013-06-14\2013-06-14_001.xad

Created: 6/14/2013 1:40:13 PM
 Modified: 6/14/2013 2:24:50 PM

Electropherogram Summary Continued ...



Setpoint Deviations for sample 3 : F2-2 144h- BF

Height Threshold [FU] : 10

Overall Results for sample 3 : F2-2 144h- BF

Number of peaks found: 5 Corr. Area 1: 262.4
 Noise: 0.7

Peak table for sample 3 : F2-2 144h- BF

Peak	Size [bp]	Conc. [pg/μl]	Molarity [pmol/l]	Observations
1	35	125.00	5,411.3	Lower Marker
2	48	74.43	2,341.0	
3	51	45.85	1,367.2	
4	401	236.79	895.5	
5	454	15.60	52.1	
6	10,380	75.00	10.9	Upper Marker
7	17,515	0.00	0.0	

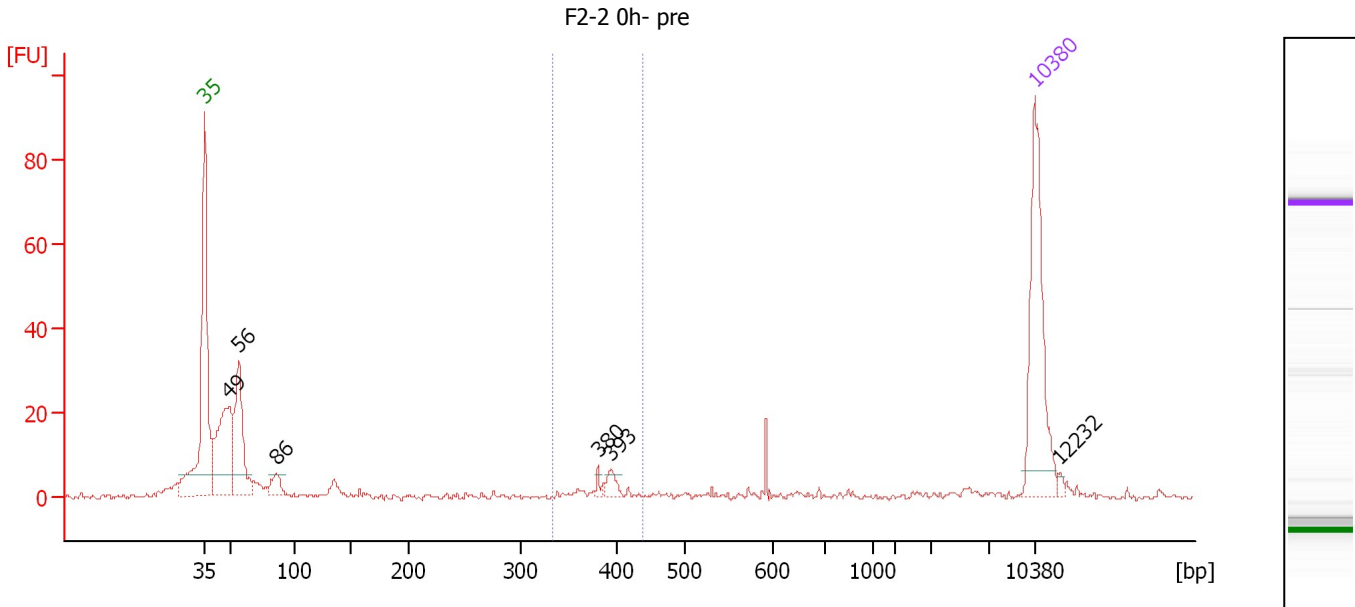
Region table for sample 3 : F2-2 144h- BF

From [bp]	To [bp]	Average Size [bp]	Molarity [pmol/l]	Conc. [pg/μl]	Corr. Area	% of Total	Size distribution in CV [%]	Color
336	464	400	1,111.2	292.45	262.4	43	6.0	Blue

Assay Class: High Sensitivity DNA Assay
 Data Path: C:\...ents and Settings\Bioanalyzer\2013-06-14\2013-06-14_001.xad

Created: 6/14/2013 1:40:13 PM
 Modified: 6/14/2013 2:24:50 PM

Electropherogram Summary Continued ...



Overall Results for sample 4 : F2-2 0h- pre

Number of peaks found: 6 Corr. Area 1: 20.6
 Noise: 0.6

Peak table for sample 4 : F2-2 0h- pre

Peak	Size [bp]	Conc. [pg/μl]	Molarity [pmol/l]	Observations
1	35	125.00	5,411.3	Lower Marker
2	49	109.95	3,426.1	
3	56	85.47	2,305.8	
4	86	15.13	267.9	
5	380	2.94	11.7	
6	393	7.96	30.7	
7	10,380	75.00	10.9	Upper Marker
8	12,232	0.00	0.0	

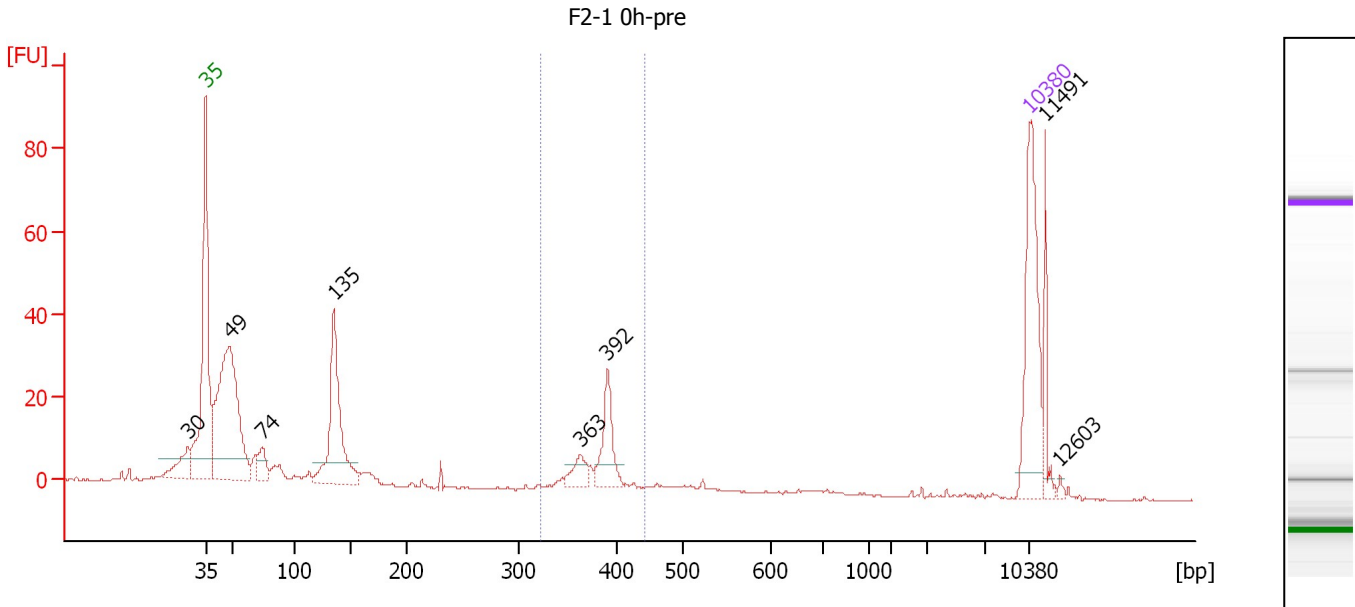
Region table for sample 4 : F2-2 0h- pre

From [bp]	To [bp]	Average Size [bp]	Molarity [pmol/l]	Conc. [pg/μl]	Corr. Area	% of Total	Size distribution in CV [%]	Color
333	438	385	86.1	21.81	20.6	8	5.4	Blue

Assay Class: High Sensitivity DNA Assay
 Data Path: C:\...ents and Settings\Bioanalyzer\2013-06-14\2013-06-14_001.xad

Created: 6/14/2013 1:40:13 PM
 Modified: 6/14/2013 2:24:50 PM

Electropherogram Summary Continued ...



Overall Results for sample 5 : F2-1 0h-pre

Number of peaks found: 8 Corr. Area 1: 62.9
 Noise: 0.2

Peak table for sample 5 : F2-1 0h-pre

Peak	Size [bp]	Conc. [pg/μl]	Molarity [pmol/l]	Observations
1	30	0.00	0.0	
2	35	125.00	5,411.3	Lower Marker
3	49	247.69	7,703.1	
4	74	21.77	443.3	
5	135	127.55	1,428.7	
6	363	15.99	66.7	
7	392	38.62	149.4	
8	10,380	75.00	10.9	Upper Marker
9	11,491	0.00	0.0	
10	12,603	0.00	0.0	

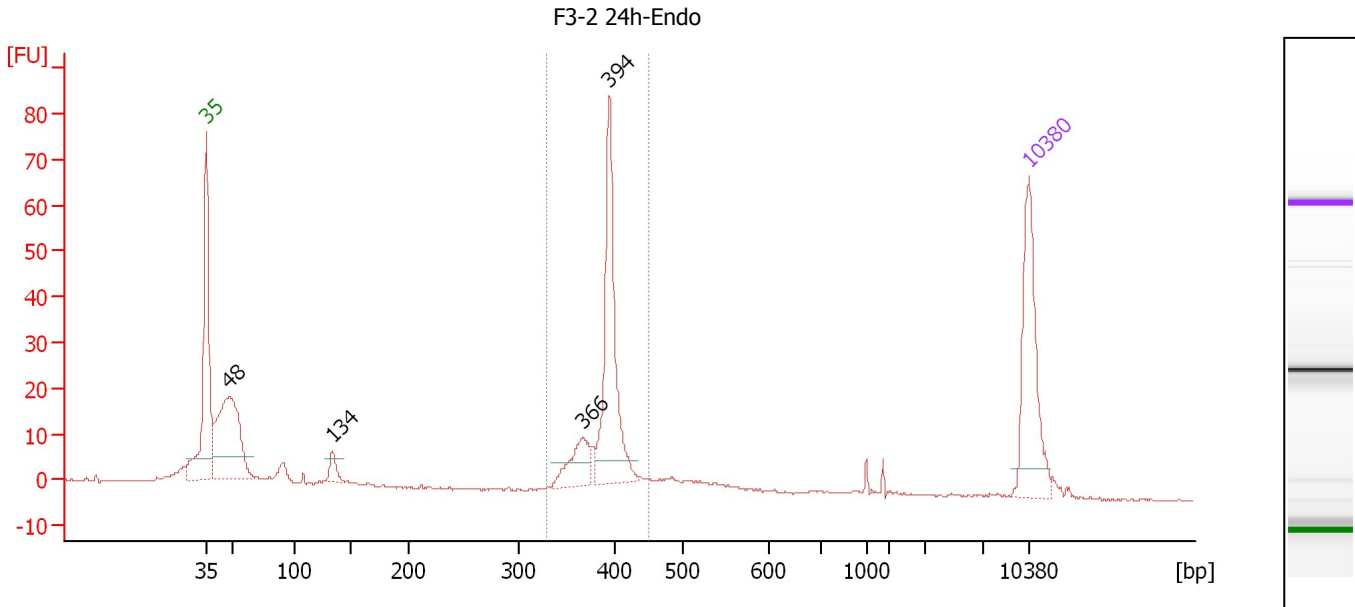
Region table for sample 5 : F2-1 0h-pre

From [bp]	To [bp]	Average Size [bp]	Molarity [pmol/l]	Conc. [pg/μl]	Corr. Area	% of Total	Size distribution in CV [%]	Color
323	442	381	282.3	70.99	62.9	14	5.1	Blue

Assay Class: High Sensitivity DNA Assay
 Data Path: C:\...ents and Settings\Bioanalyzer\2013-06-14\2013-06-14_001.xad

Created: 6/14/2013 1:40:13 PM
 Modified: 6/14/2013 2:24:50 PM

Electropherogram Summary Continued ...



Overall Results for sample 6 : F3-2 24h-Endo

Number of peaks found: 4 Corr. Area 1: 157.8
 Noise: 0.2

Peak table for sample 6 : F3-2 24h-Endo

Peak	Size [bp]	Conc. [pg/μl]	Molarity [pmol/l]	Observations
1	35	125.00	5,411.3	Lower Marker
2	48	175.67	5,529.5	
3	134	15.28	173.3	
4	366	38.58	159.6	
5	394	143.29	551.7	
6	10,380	75.00	10.9	Upper Marker

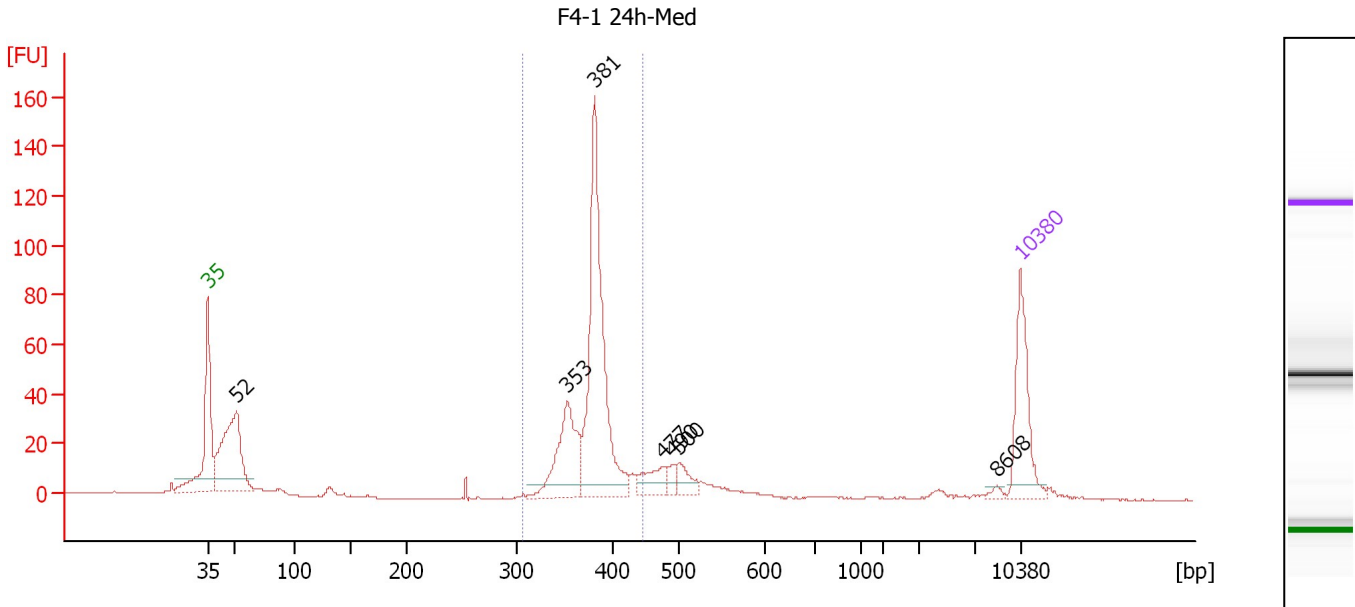
Region table for sample 6 : F3-2 24h-Endo

From [bp]	To [bp]	Average Size [bp]	Molarity [pmol/l]	Conc. [pg/μl]	Corr. Area	% of Total	Size distribution in CV [%]	Color
328	450	390	805.2	206.76	157.8	46	4.9	Blue

Assay Class: High Sensitivity DNA Assay
 Data Path: C:\...ents and Settings\Bioanalyzer\2013-06-14\2013-06-14_001.xad

Created: 6/14/2013 1:40:13 PM
 Modified: 6/14/2013 2:24:50 PM

Electropherogram Summary Continued ...



Overall Results for sample 7 : F4-1 24h-Med

Number of peaks found: 7 Corr. Area 1: 389.1
 Noise: 0.1

Peak table for sample 7 : F4-1 24h-Med

Peak	Size [bp]	Conc. [pg/μl]	Molarity [pmol/l]	Observations
1	35	125.00	5,411.3	Lower Marker
2	52	212.10	6,133.3	
3	353	118.06	507.2	
4	381	304.40	1,209.5	
5	477	32.23	102.5	
6	490	11.54	35.7	
7	500	22.52	68.2	
8	8,608	4.24	0.7	
9	10,380	75.00	10.9	Upper Marker

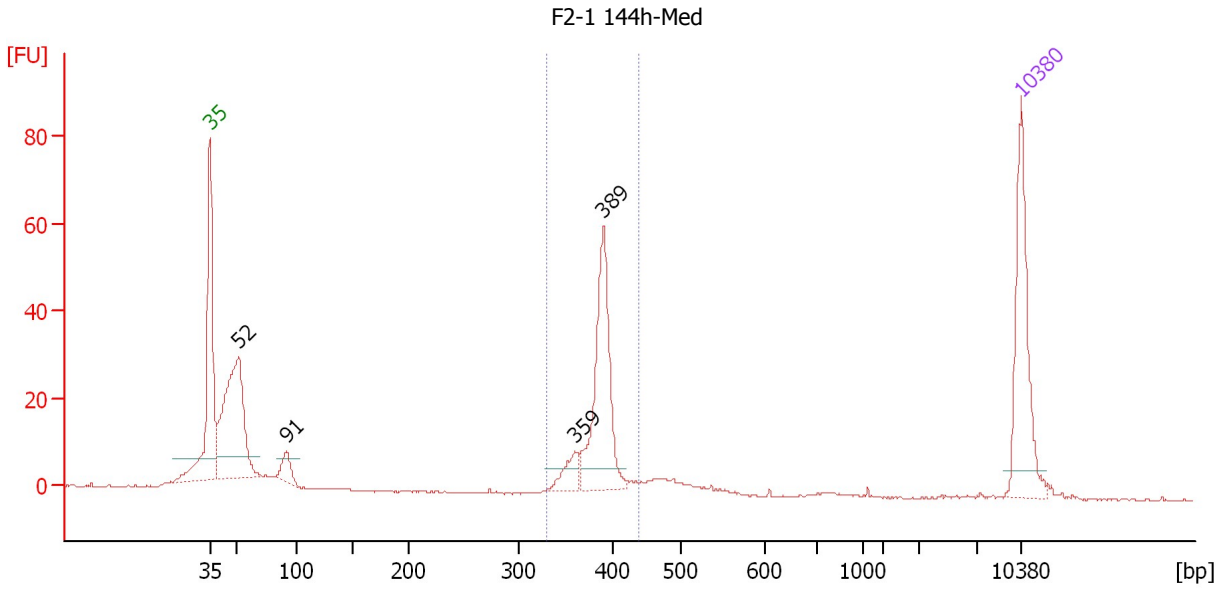
Region table for sample 7 : F4-1 24h-Med

From [bp]	To [bp]	Average Size [bp]	Molarity [pmol/l]	Conc. [pg/μl]	Corr. Area	% of Total	Size distribution in CV [%]	Color
306	447	379	1,727.4	431.12	389.1	59	5.6	Blue

Assay Class: High Sensitivity DNA Assay
 Data Path: C:\...ents and Settings\Bioanalyzer\2013-06-14\2013-06-14_001.xad

Created: 6/14/2013 1:40:13 PM
 Modified: 6/14/2013 2:24:50 PM

Electropherogram Summary Continued ...



Overall Results for sample 8 : F2-1 144h-Med

Number of peaks found: 4 Corr. Area 1: 141.3
 Noise: 0.2

Peak table for sample 8 : F2-1 144h-Med

Peak	Size [bp]	Conc. [pg/μl]	Molarity [pmol/l]	Observations
1	35	125.00	5,411.3	Lower Marker
2	52	205.75	5,944.4	
3	91	20.75	344.3	
4	359	20.69	87.3	
5	389	131.40	511.2	
6	10,380	75.00	10.9	Upper Marker

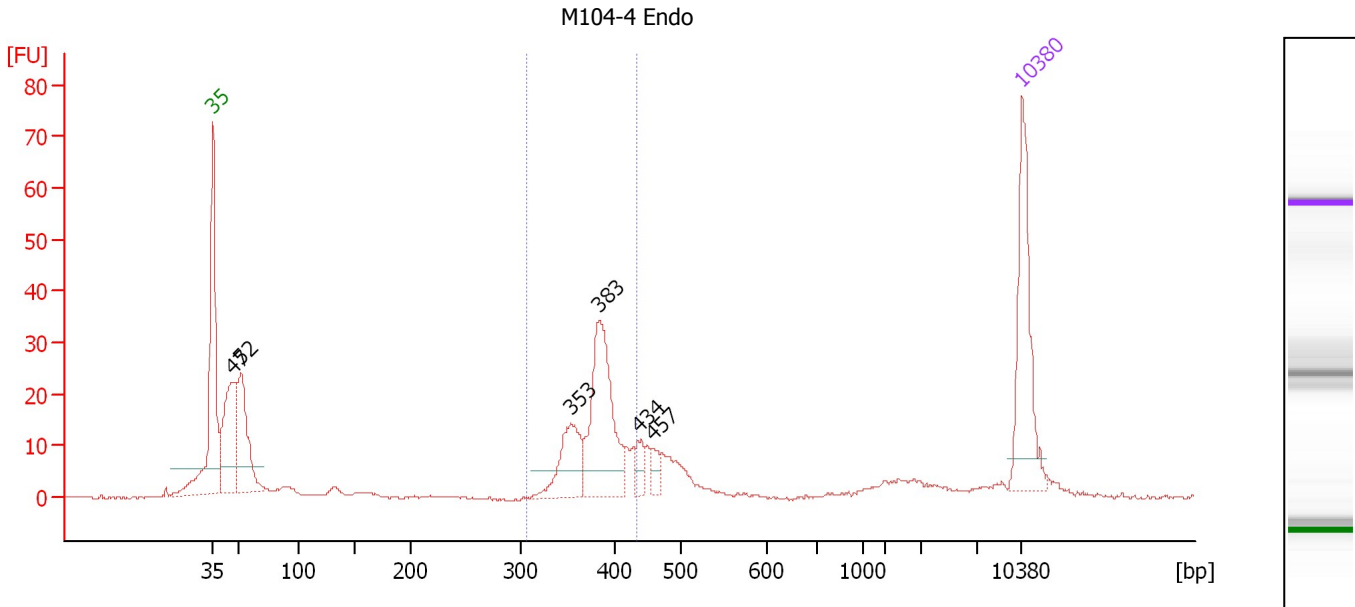
Region table for sample 8 : F2-1 144h-Med

From [bp]	To [bp]	Average Size [bp]	Molarity [pmol/l]	Conc. [pg/μl]	Corr. Area	% of Total	Size distribution in CV [%]	Color
329	439	384	649.3	164.53	141.3	41	4.4	Blue

Assay Class: High Sensitivity DNA Assay
 Data Path: C:\...ents and Settings\Bioanalyzer\2013-06-14\2013-06-14_001.xad

Created: 6/14/2013 1:40:13 PM
 Modified: 6/14/2013 2:24:50 PM

Electropherogram Summary Continued ...



Overall Results for sample 9 : M104-4 Endo

Number of peaks found: 6 Corr. Area 1: 150.1
 Noise: 0.2

Peak table for sample 9 : M104-4 Endo

Peak	Size [bp]	Conc. [pg/μl]	Molarity [pmol/l]	Observations
1	35	125.00	5,411.3	Lower Marker
2	47	117.08	3,790.6	
3	52	99.63	2,875.9	
4	353	58.18	249.7	
5	383	129.74	513.4	
6	434	13.97	48.7	
7	457	11.31	37.5	
8	10,380	75.00	10.9	Upper Marker

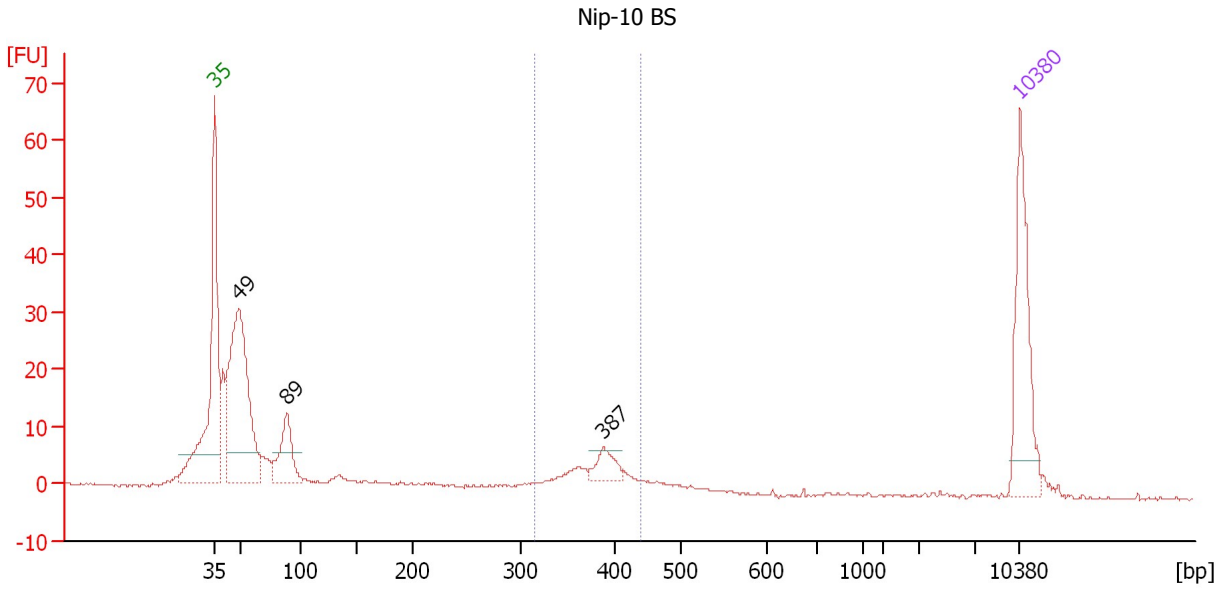
Region table for sample 9 : M104-4 Endo

From [bp]	To [bp]	Average Size [bp]	Molarity [pmol/l]	Conc. [pg/μl]	Corr. Area	% of Total	Size distribution in CV [%]	Color
306	434	380	819.6	205.24	150.1	40	6.1	Blue

Assay Class: High Sensitivity DNA Assay
 Data Path: C:\...ents and Settings\Bioanalyzer\2013-06-14\2013-06-14_001.xad

Created: 6/14/2013 1:40:13 PM
 Modified: 6/14/2013 2:24:50 PM

Electropherogram Summary Continued ...



Overall Results for sample 10 : Nip-10 BS

Number of peaks found: 3 Corr. Area 1: 44.5
 Noise: 0.3

Peak table for sample 10 : Nip-10 BS

Peak	Size [bp]	Conc. [pg/μl]	Molarity [pmol/l]	Observations
1	35	125.00	5,411.3	Lower Marker
2	49	268.27	8,287.5	
3	89	61.42	1,049.3	
4	387	20.13	78.8	
5	10,380	75.00	10.9	Upper Marker

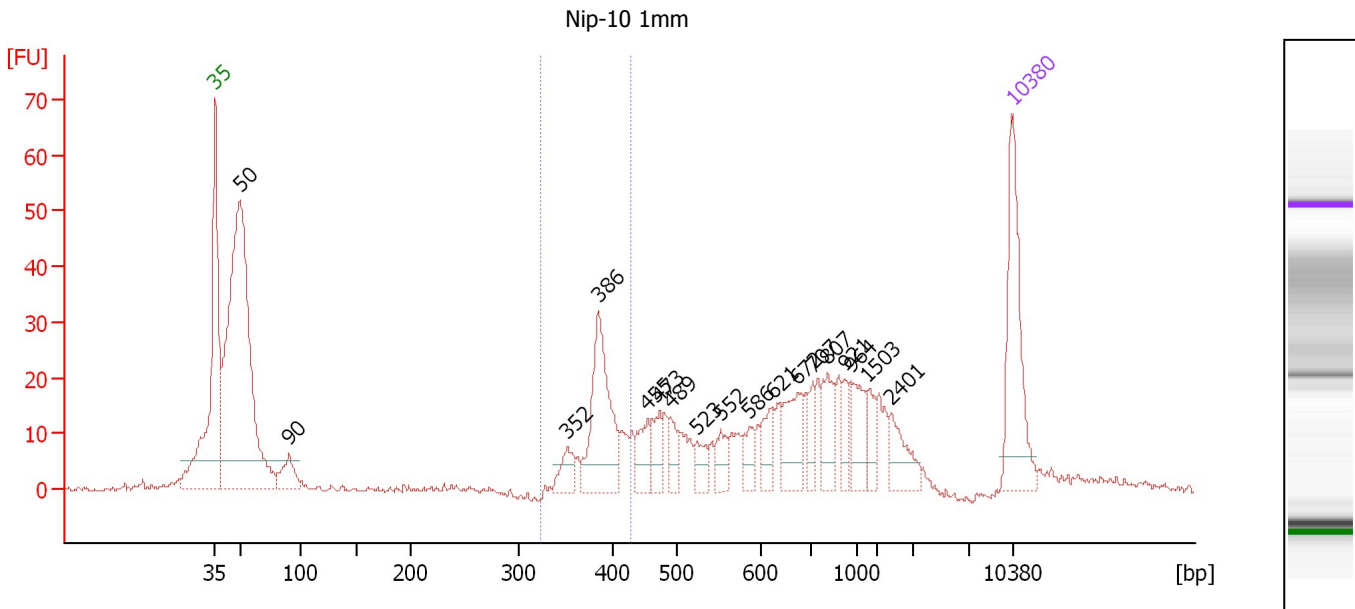
Region table for sample 10 : Nip-10 BS

From [bp]	To [bp]	Average Size [bp]	Molarity [pmol/l]	Conc. [pg/μl]	Corr. Area	% of Total	Size distribution in CV [%]	Color
314	440	378	263.4	65.53	44.5	15	7.6	Blue

Assay Class: High Sensitivity DNA Assay
 Data Path: C:\...ents and Settings\Bioanalyzer\2013-06-14\2013-06-14_001.xad

Created: 6/14/2013 1:40:13 PM
 Modified: 6/14/2013 2:24:50 PM

Electropherogram Summary Continued ...



Overall Results for sample 11 : Nip-10 1mm

Number of peaks found: 18 Corr. Area 1: 102.0
 Noise: 0.5

Peak table for sample 11 : Nip-10 1mm

Peak	Size [bp]	Conc. [pg/μl]	Molarity [pmol/l]	Observations
1	35	125.00	5,411.3	Lower Marker
2	50	513.21	15,608.6	
3	90	30.62	514.5	
4	352	22.38	96.3	
5	386	107.82	423.4	
6	455	25.86	86.1	
7	473	23.43	75.1	
8	489	18.49	57.3	
9	523	16.26	47.1	
10	552	17.55	48.2	
11	586	16.79	43.4	
12	621	22.40	54.6	
13	672	43.31	97.6	
14	707	16.84	36.1	
15	807	31.83	59.8	
16	921	14.77	24.3	
17	964	31.53	49.6	
18	1,503	17.04	17.2	
19	2,401	25.13	15.9	
20	10,380	75.00	10.9	Upper Marker

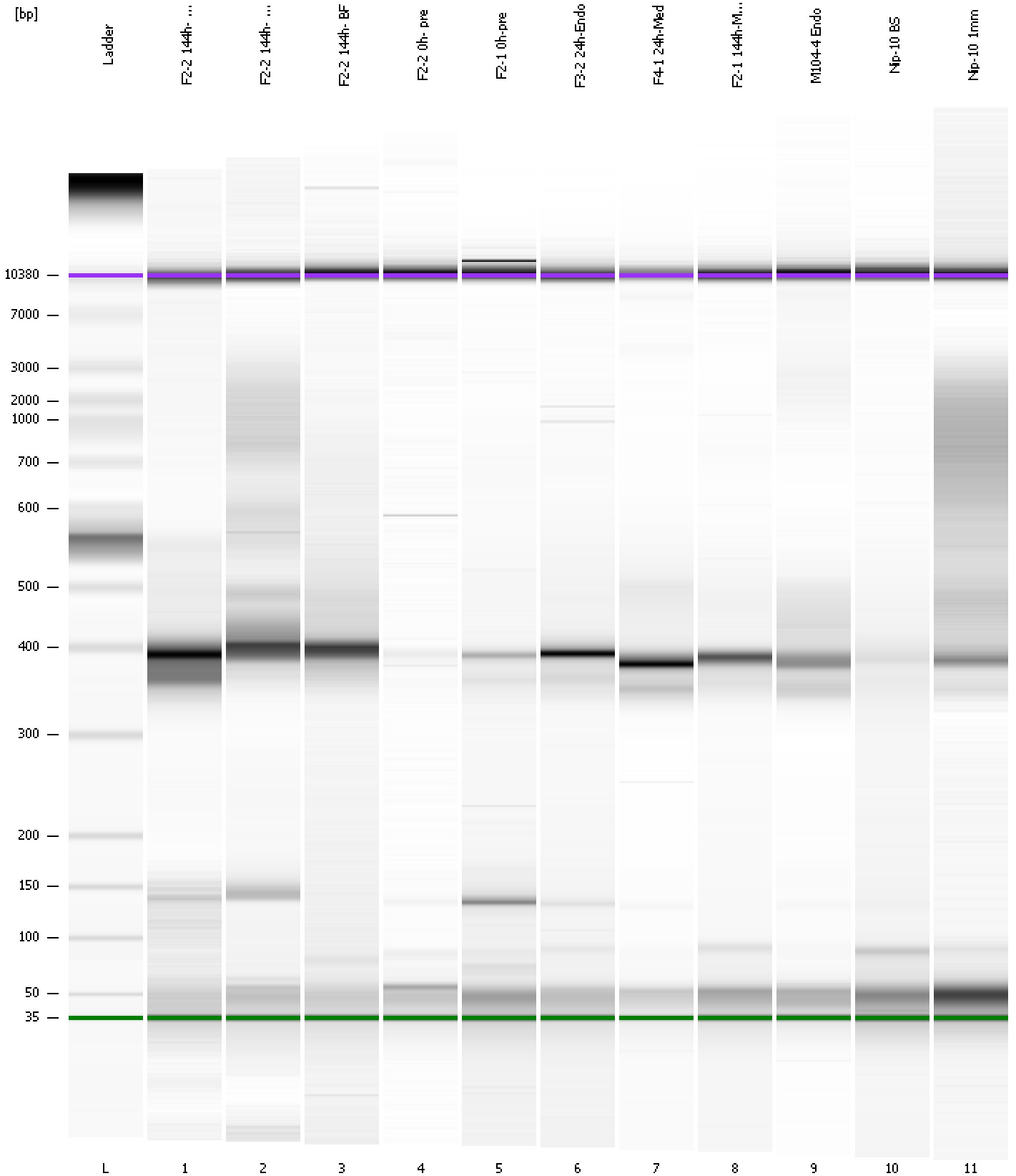
Region table for sample 11 : Nip-10 1mm

From [bp]	To [bp]	Average Size [bp]	Molarity [pmol/l]	Conc. [pg/μl]	Corr. Area	% of Total	Size distribution in CV [%]	Color
324	429	387	573.0	146.05	102.0	13	5.1	Blue

Assay Class: High Sensitivity DNA Assay
Data Path: C:\...ents and Settings\Bioanalyzer\2013-06-14\2013-06-14_001.xad

Created: 6/14/2013 1:40:13 PM
Modified: 6/14/2013 2:24:50 PM

Gel Image



Assay Class: High Sensitivity DNA Assay
 Data Path: C:\...ents and Settings\Bioanalyzer\2013-06-14\2013-06-14_001.xad

Created: 6/14/2013 1:40:13 PM
 Modified: 6/14/2013 2:24:50 PM

Run Logbook

Description	Number	Source	Category	Sub Category	Time	Time Zone	User	Host
Run ended on port 1 (Number of wells acquired: 12)		Instrument	Run		6/14/2013 2:21:32 PM	(GMT --07:00) Pacific Standard Time	UC Davis	D8XSMGH1
Run started on port 1 (File: C:\Documents and Settings\Bioanalyzer\2013-06-14\2013-06-14_001.xad)		Instrument	Run		6/14/2013 1:40:18 PM	(GMT --07:00) Pacific Standard Time	UC Davis	D8XSMGH1
Product Number : G2938B		Instrument	Run		6/14/2013 1:40:18 PM	(GMT --07:00) Pacific Standard Time	UC Davis	D8XSMGH1
Name :		Instrument	Run		6/14/2013 1:40:18 PM	(GMT --07:00) Pacific Standard Time	UC Davis	D8XSMGH1
Vendor : Agilent Technologies		Instrument	Run		6/14/2013 1:40:18 PM	(GMT --07:00) Pacific Standard Time	UC Davis	D8XSMGH1
Serial# : DE13701086		Instrument	Run		6/14/2013 1:40:18 PM	(GMT --07:00) Pacific Standard Time	UC Davis	D8XSMGH1
Firmware : C.01.069		Instrument	Run		6/14/2013 1:40:18 PM	(GMT --07:00) Pacific Standard Time	UC Davis	D8XSMGH1
Cartridge : Electrode		Instrument	Run		6/14/2013 1:40:18 PM	(GMT --07:00) Pacific Standard Time	UC Davis	D8XSMGH1