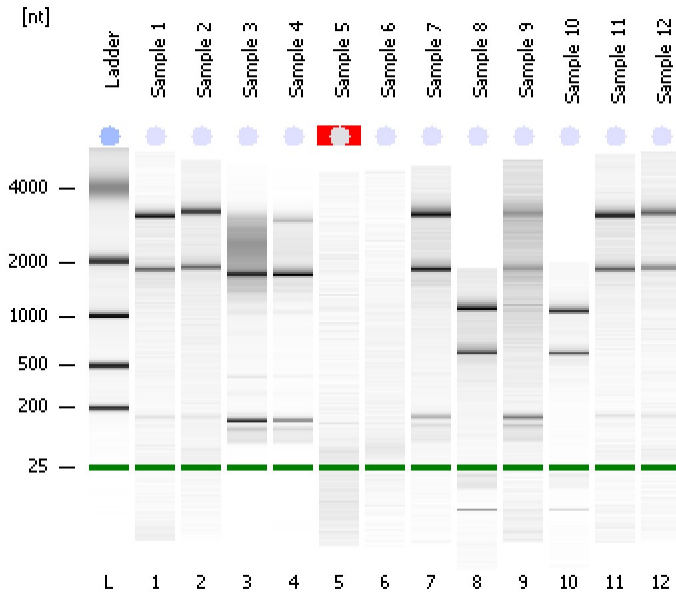


Assay Class: Eukaryote Total RNA Nano  
Data Path: C:\...ents and Settings\Bioanalyzer\2013-06-17\2013-06-17\_002.xad

Created: 6/17/2013 3:30:12 PM  
Modified: 6/17/2013 4:01:40 PM

**Electrophoresis File Run Summary**



Instrument Information:

Instrument Name: DE13701086      Firmware: C.01.069  
Serial#: DE13701086      Type: G2938B

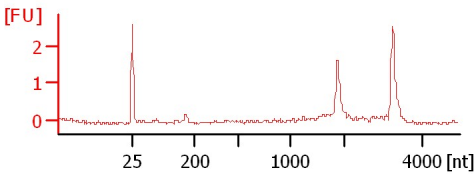
Assay Information:

Assay Origin Path: C:\Program Files\Agilent\2100 bioanalyzer\2100 expert\assays\RNA\Eukaryote Total RNA Nano Series II.xsy  
Assay Class: Eukaryote Total RNA Nano  
Version: 2.6  
Assay Comments: Total RNA Analysis ng sensitivity (Eukaryote)  
© Copyright 2003 - 2009 Agilent Technologies, Inc.

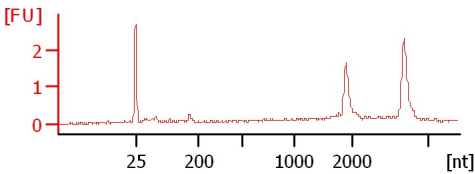
Chip Information:

Chip Lot #:      Reagent Kit Lot #:      Chip Comments:

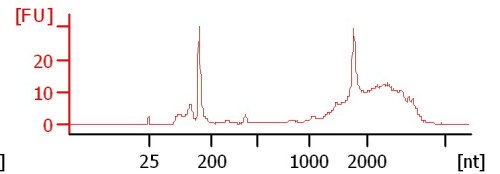
**Sample 1**  
RIN: 2.60



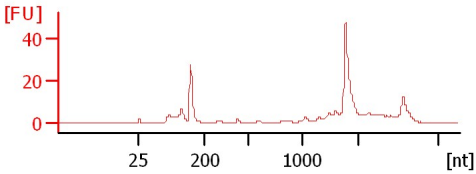
**Sample 2**  
RIN: 6.60



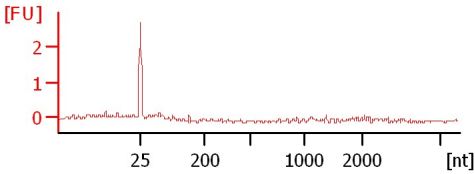
**Sample 3**  
RIN: 2.50



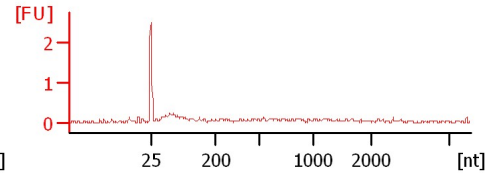
**Sample 4**  
RIN: 2.80



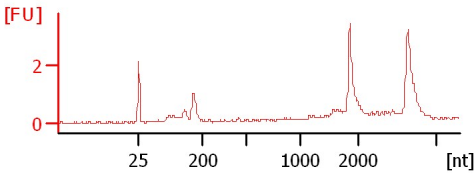
**Sample 5**  
RIN N/A



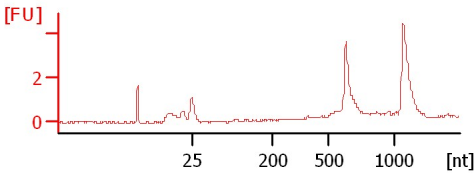
**Sample 6**  
RIN: 1



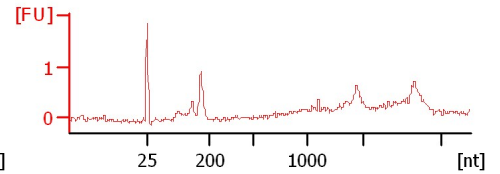
**Sample 7**  
RIN: 2.60



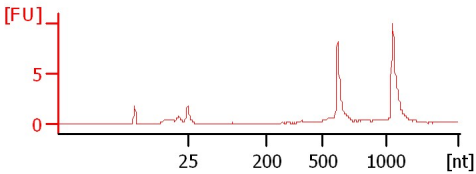
**Sample 8**  
RIN: 6.10



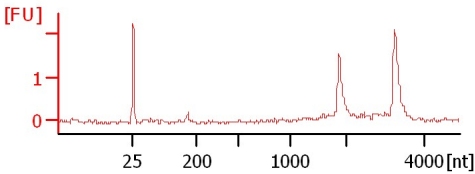
**Sample 9**  
RIN: 2.60



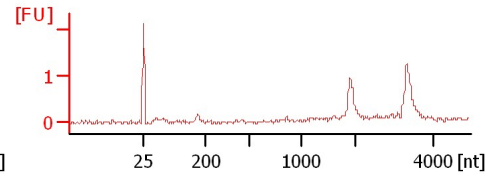
**Sample 10**  
RIN: 6.20



**Sample 11**  
RIN: 2.60



**Sample 12**  
RIN: 7.40



Assay Class: Eukaryote Total RNA Nano  
 Data Path: C:\...ents and Settings\Bioanalyzer\2013-06-17\2013-06-17\_002.xad

Created: 6/17/2013 3:30:12 PM  
 Modified: 6/17/2013 4:01:40 PM

**Electrophoresis File Run Summary (Chip Summary)**

Sample Name	Sample Comment	Status	Result Label	Result Color
Sample 1		✓	RIN: 2.60	
Sample 2		✓	RIN: 6.60	
Sample 3		✓	RIN: 2.50	
Sample 4		✓	RIN: 2.80	
Sample 5		✓	RIN N/A	
Sample 6		✓	RIN:1	
Sample 7		✓	RIN: 2.60	
Sample 8		✓	RIN: 6.10	
Sample 9		✓	RIN: 2.60	
Sample 10		✓	RIN: 6.20	
Sample 11		✓	RIN: 2.60	
Sample 12		✓	RIN: 7.40	
Ladder		✓	All Other Samples	

**Chip Lot #**

**Reagent Kit Lot #**

**Chip Comments :**

Assay Class: Eukaryote Total RNA Nano  
Data Path: C:\...ents and Settings\Bioanalyzer\2013-06-17\2013-06-17\_002.xad

Created: 6/17/2013 3:30:12 PM  
Modified: 6/17/2013 4:01:40 PM

## Electrophoresis Assay Details

### General Analysis Settings

Number of Available Sample and Ladder Wells (Max.) : 13  
Minimum Visible Range [s] : 17  
Maximum Visible Range [s] : 70  
Start Analysis Time Range [s] : 19  
End Analysis Time Range [s] : 69  
Ladder Concentration [ng/ $\mu$ l] : 150  
Lower Marker Concentration [ng/ $\mu$ l] : 0  
Upper Marker Concentration [ng/ $\mu$ l] : 0  
Used Lower Marker for Quantitation  
Standard Curve Fit is Logarithmic  
Show Data Aligned to Lower Marker

### Integrator Settings

Integration Start Time [s] : 19  
Integration End Time [s] : 69  
Slope Threshold : 0.6  
Height Threshold [FU] : 0.5  
Area Threshold : 0.2  
Width Threshold [s] : 0.5  
Baseline Plateau [s] : 6

### Filter Settings

Filter Width [s] : 0.5  
Polynomial Order : 4

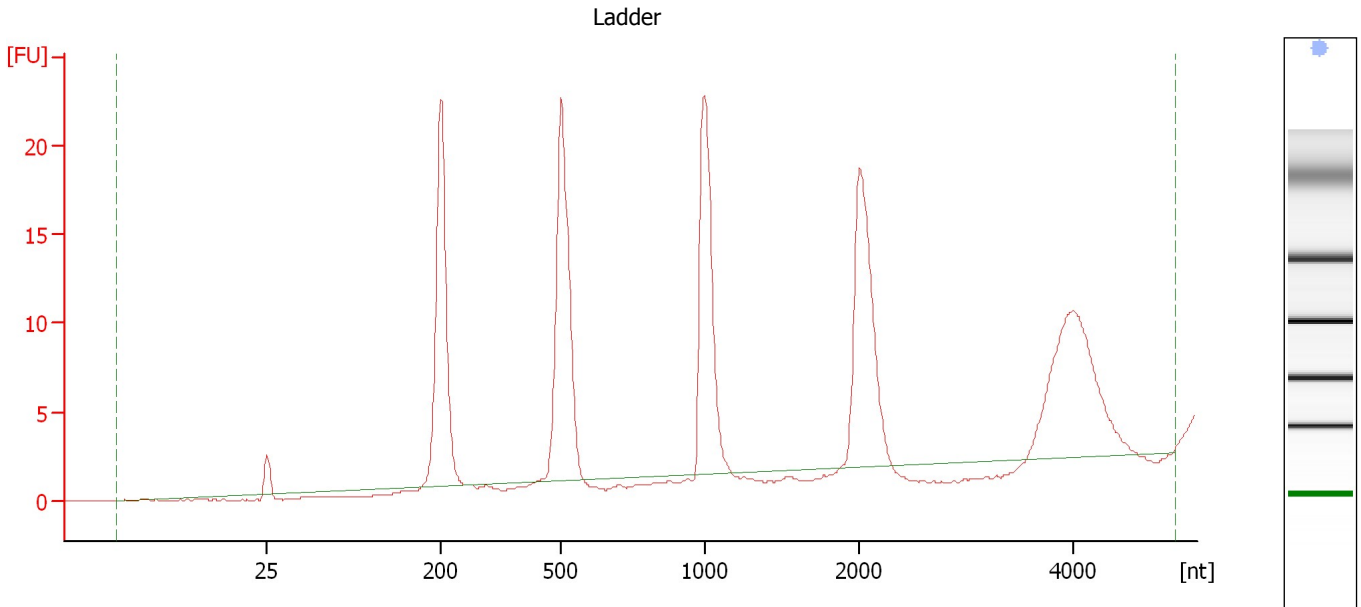
### Ladder

Ladder Peak	Size
1	25
2	200
3	500
4	1000
5	2000
6	4000

Assay Class: Eukaryote Total RNA Nano  
Data Path: C:\...ents and Settings\Bioanalyzer\2013-06-17\2013-06-17\_002.xad

Created: 6/17/2013 3:30:12 PM  
Modified: 6/17/2013 4:01:40 PM

**Electropherogram Summary**



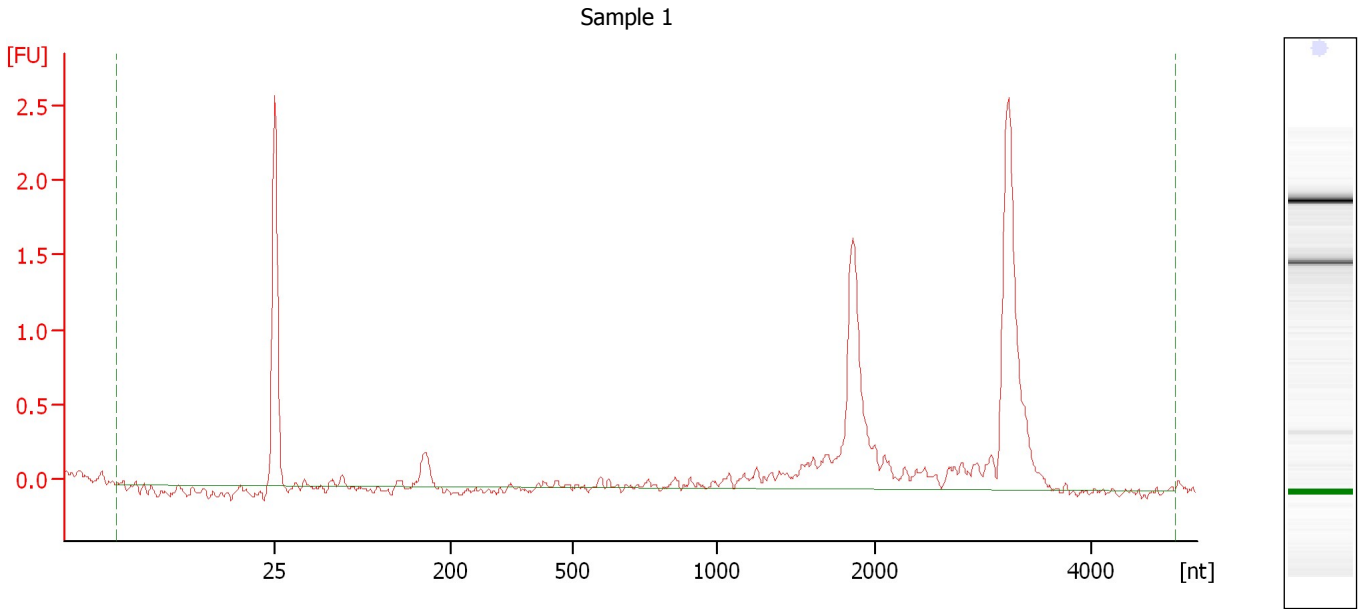
**Overall Results for Ladder**

RNA Area:	160.8	Result Flagging Color:	<span style="background-color: #ADD8E6; border: 1px solid black; display: inline-block; width: 20px; height: 10px;"></span>
RNA Concentration:	150 ng/ $\mu$ l	Result Flagging Label:	All Other Samples

Assay Class: Eukaryote Total RNA Nano  
Data Path: C:\...ents and Settings\Bioanalyzer\2013-06-17\2013-06-17\_002.xad

Created: 6/17/2013 3:30:12 PM  
Modified: 6/17/2013 4:01:40 PM

**Electropherogram Summary Continued ...**



**Overall Results for sample 1 : Sample 1**

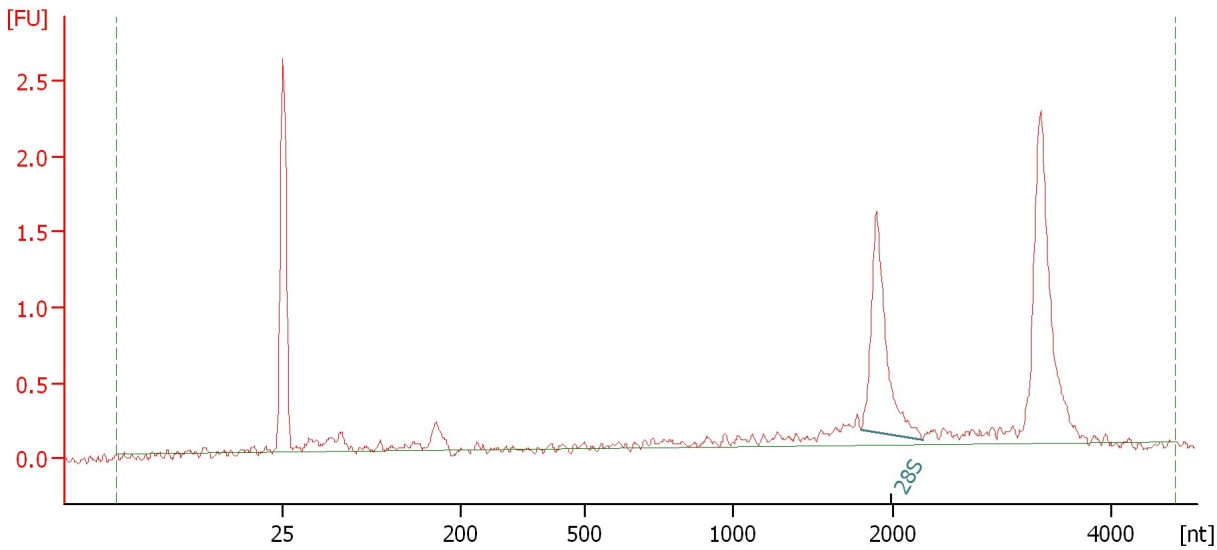
RNA Area:	8.6	RNA Integrity Number (RIN):	2.6 (B.02.08)
RNA Concentration:	8 ng/μl	Result Flagging Color:	<span style="background-color: #ccccff; border: 1px solid black; display: inline-block; width: 20px; height: 10px;"></span>
rRNA Ratio [28s / 18s]:	0.0	Result Flagging Label:	RIN: 2.60

Assay Class: Eukaryote Total RNA Nano  
Data Path: C:\...ents and Settings\Bioanalyzer\2013-06-17\2013-06-17\_002.xad

Created: 6/17/2013 3:30:12 PM  
Modified: 6/17/2013 4:01:40 PM

**Electropherogram Summary Continued ...**

Sample 2



**Overall Results for sample 2 : Sample 2**

RNA Area:	9.0	RNA Integrity Number (RIN):	6.6 (B.02.08, Anomaly Threshold(s) manually adapted)
RNA Concentration:	8 ng/μl	Result Flagging Color:	<span style="background-color: #ccccff; border: 1px solid black; display: inline-block; width: 20px; height: 10px;"></span>
rRNA Ratio [28s / 18s]:	0.0	Result Flagging Label:	RIN: 6.60

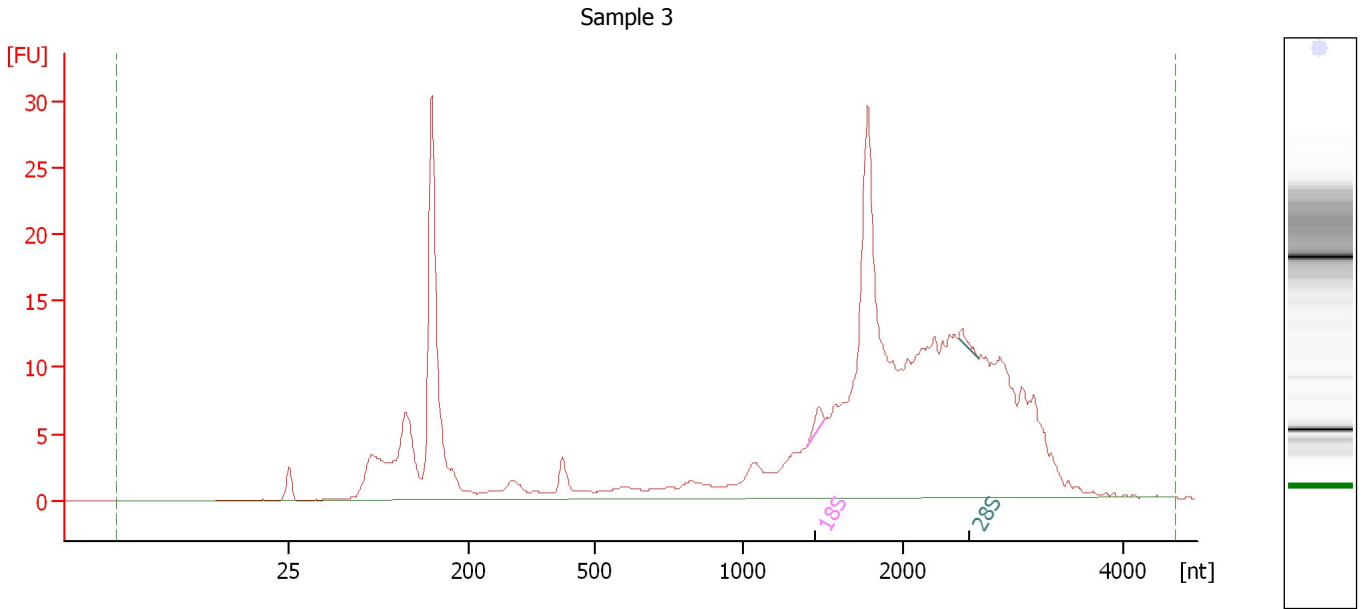
**Fragment table for sample 2 : Sample 2**

Name	Start Size [nt]	End Size [nt]	Area	% of total Area
28S	1,801	2,277	2.1	23.7

Assay Class: Eukaryote Total RNA Nano  
Data Path: C:\...ents and Settings\Bioanalyzer\2013-06-17\2013-06-17\_002.xad

Created: 6/17/2013 3:30:12 PM  
Modified: 6/17/2013 4:01:40 PM

**Electropherogram Summary Continued ...**



**Overall Results for sample 3 : Sample 3**

RNA Area:	320.6	RNA Integrity Number (RIN):	2.5 (B.02.08)
RNA Concentration:	299 ng/μl	Result Flagging Color:	<span style="background-color: #ccccff; border: 1px solid black; display: inline-block; width: 20px; height: 10px;"></span>
rRNA Ratio [28s / 18s]:	0.5	Result Flagging Label:	RIN: 2.50

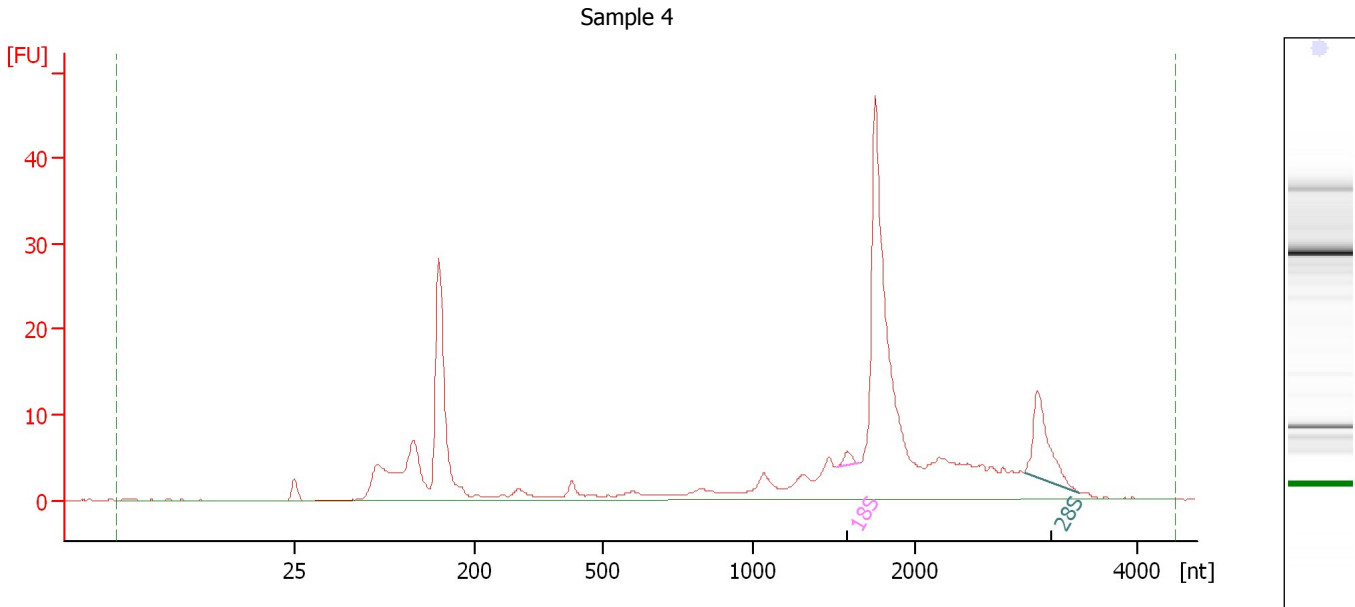
**Fragment table for sample 3 : Sample 3**

Name	Start Size [nt]	End Size [nt]	Area	% of total Area
18S	1,396	1,515	1.3	0.4
28S	2,504	2,679	0.6	0.2

Assay Class: Eukaryote Total RNA Nano  
Data Path: C:\...ents and Settings\Bioanalyzer\2013-06-17\2013-06-17\_002.xad

Created: 6/17/2013 3:30:12 PM  
Modified: 6/17/2013 4:01:40 PM

**Electropherogram Summary Continued ...**



**Overall Results for sample 4 : Sample 4**

RNA Area:	249.8	RNA Integrity Number (RIN):	2.8 (B.02.08)
RNA Concentration:	233 ng/μl	Result Flagging Color:	<span style="background-color: #ccccff; border: 1px solid black; display: inline-block; width: 20px; height: 10px;"></span>
rRNA Ratio [28s / 18s]:	10.4	Result Flagging Label:	RIN: 2.80

**Fragment table for sample 4 : Sample 4**

Name	Start Size [nt]	End Size [nt]	Area	% of total Area
18S	1,525	1,663	1.3	0.5
28S	2,987	3,486	13.8	5.5

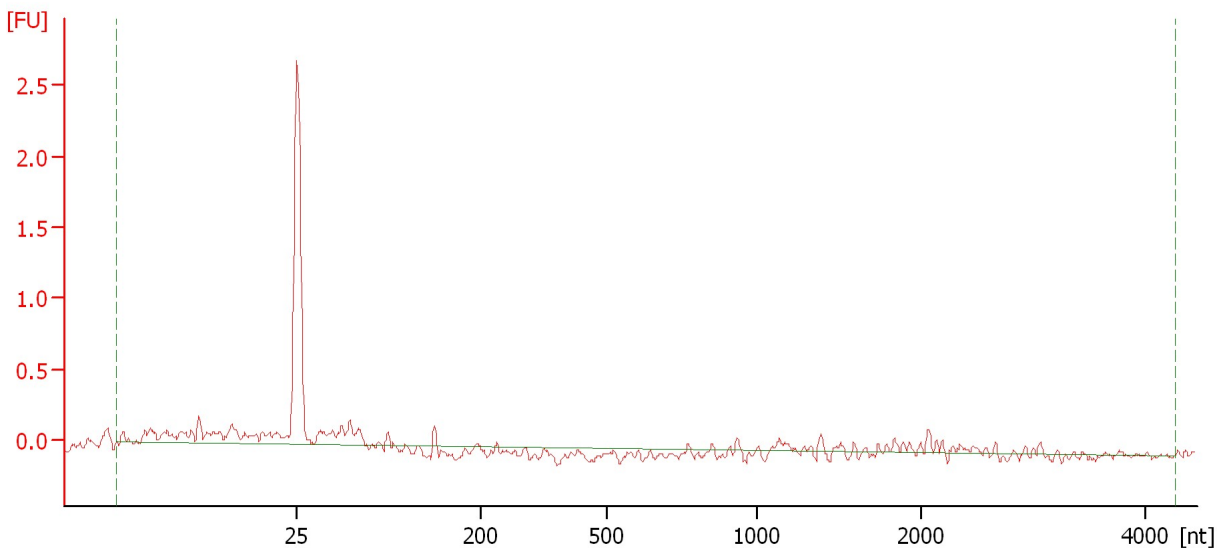


Assay Class: Eukaryote Total RNA Nano  
Data Path: C:\...ents and Settings\Bioanalyzer\2013-06-17\2013-06-17\_002.xad

Created: 6/17/2013 3:30:12 PM  
Modified: 6/17/2013 4:01:40 PM

**Electropherogram Summary Continued ...**

Sample 5



**Overall Results for sample 5 : Sample 5**

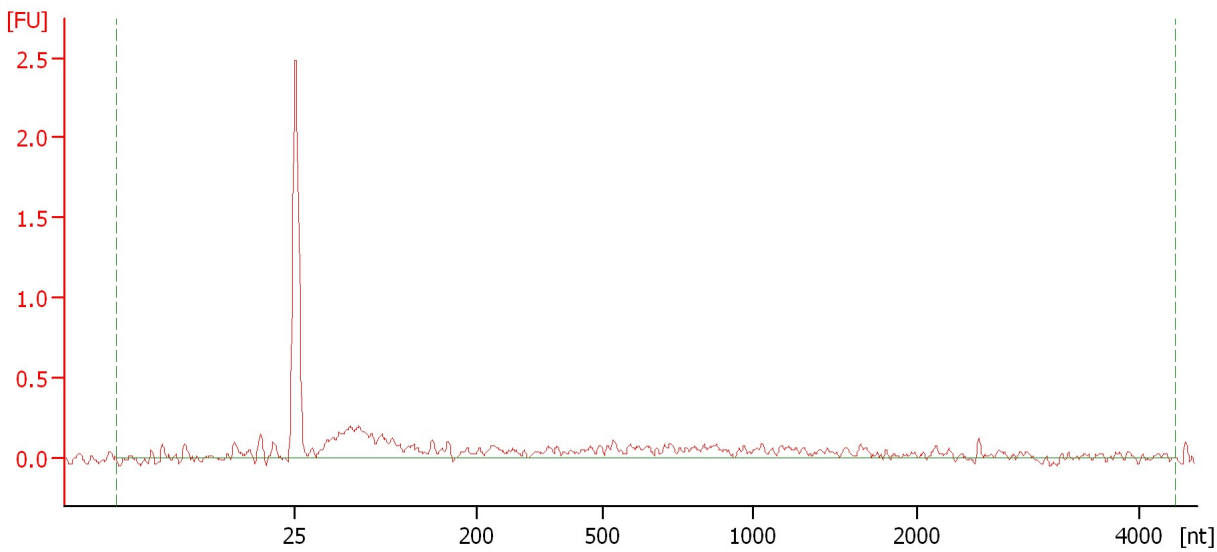
RNA Area:	4.0	RNA Integrity Number (RIN):	N/A (B.02.08)
RNA Concentration:	4 ng/μl	Result Flagging Color:	<span style="background-color: #cccccc; border: 1px solid black; display: inline-block; width: 20px; height: 10px;"></span>
rRNA Ratio [28s / 18s]:	0.0	Result Flagging Label:	RIN N/A

Assay Class: Eukaryote Total RNA Nano  
Data Path: C:\...ents and Settings\Bioanalyzer\2013-06-17\2013-06-17\_002.xad

Created: 6/17/2013 3:30:12 PM  
Modified: 6/17/2013 4:01:40 PM

**Electropherogram Summary Continued ...**

Sample 6



**Overall Results for sample 6 : Sample 6**

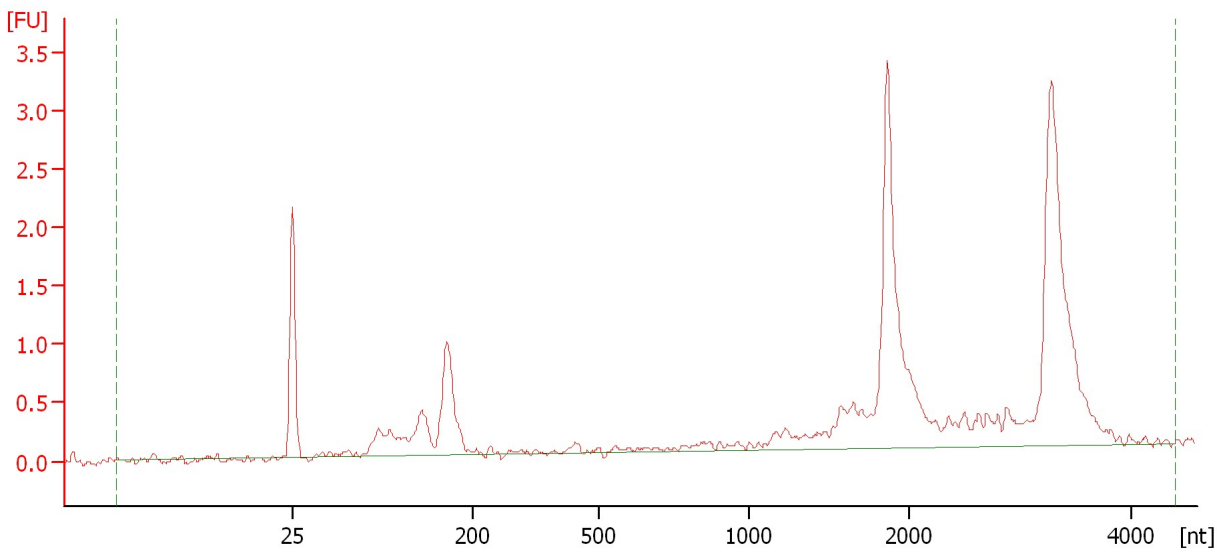
RNA Area:	5.0	RNA Integrity Number (RIN):	1 (B.02.08)
RNA Concentration:	5 ng/μl	Result Flagging Color:	<span style="background-color: #ccccff; border: 1px solid black; display: inline-block; width: 20px; height: 10px;"></span>
rRNA Ratio [28s / 18s]:	0.0	Result Flagging Label:	RIN:1

Assay Class: Eukaryote Total RNA Nano  
Data Path: C:\...ents and Settings\Bioanalyzer\2013-06-17\2013-06-17\_002.xad

Created: 6/17/2013 3:30:12 PM  
Modified: 6/17/2013 4:01:40 PM

**Electropherogram Summary Continued ...**

Sample 7



**Overall Results for sample 7 : Sample 7**

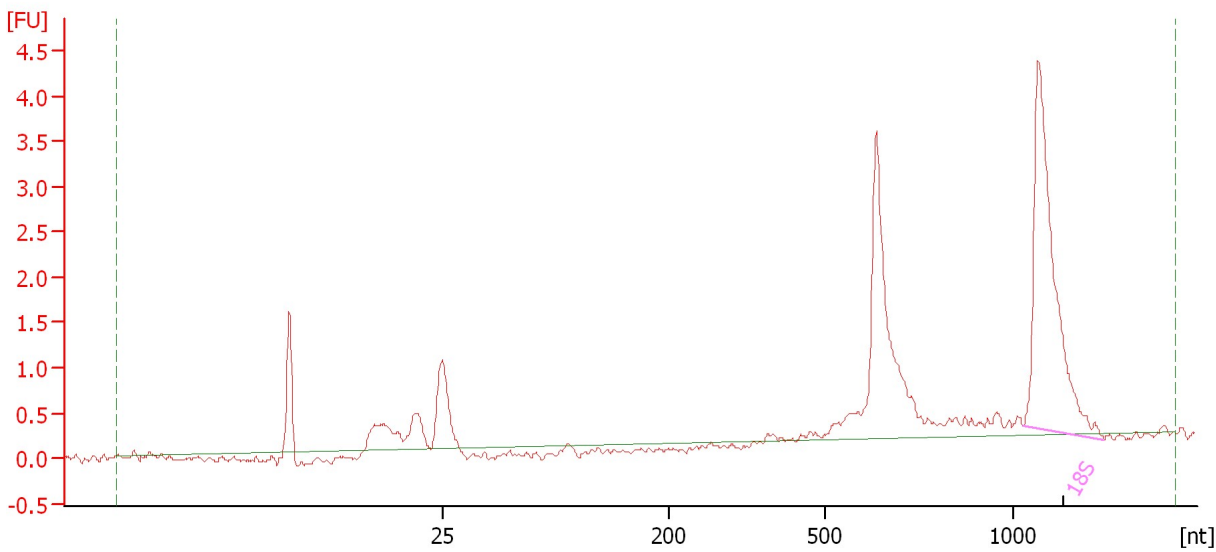
RNA Area:	18.8	RNA Integrity Number (RIN):	2.6 (B.02.08)
RNA Concentration:	18 ng/μl	Result Flagging Color:	<span style="background-color: #ccccff; border: 1px solid black; display: inline-block; width: 20px; height: 10px;"></span>
rRNA Ratio [28s / 18s]:	0.0	Result Flagging Label:	RIN: 2.60

Assay Class: Eukaryote Total RNA Nano  
Data Path: C:\...ents and Settings\Bioanalyzer\2013-06-17\2013-06-17\_002.xad

Created: 6/17/2013 3:30:12 PM  
Modified: 6/17/2013 4:01:40 PM

**Electropherogram Summary Continued ...**

Sample 8



**Overall Results for sample 8 : Sample 8**

RNA Area:	18.2	RNA Integrity Number (RIN):	6.1 (B.02.08, Anomaly Threshold(s) manually adapted)
RNA Concentration:	17 ng/μl		
rRNA Ratio [28s / 18s]:	0.0	Result Flagging Color:	<span style="background-color: #ccccff; border: 1px solid black; display: inline-block; width: 20px; height: 10px;"></span>
		Result Flagging Label:	RIN: 6.10

**Fragment table for sample 8 : Sample 8**

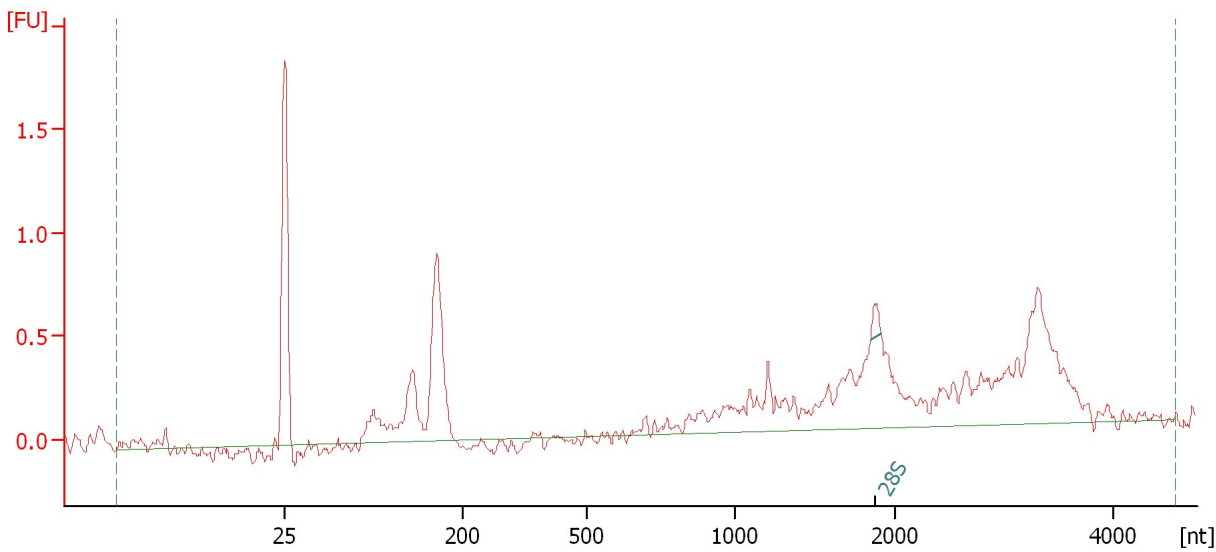
Name	Start Size [nt]	End Size [nt]	Area	% of total Area
18S	1,049	1,445	6.8	37.5

Assay Class: Eukaryote Total RNA Nano  
Data Path: C:\...ents and Settings\Bioanalyzer\2013-06-17\2013-06-17\_002.xad

Created: 6/17/2013 3:30:12 PM  
Modified: 6/17/2013 4:01:40 PM

**Electropherogram Summary Continued ...**

Sample 9



**Overall Results for sample 9 : Sample 9**

RNA Area:	10.2	RNA Integrity Number (RIN):	2.6 (B.02.08, Anomaly Threshold(s) manually adapted)
RNA Concentration:	10 ng/μl		
rRNA Ratio [28s / 18s]:	0.0	Result Flagging Color:	<span style="background-color: #ccccff; border: 1px solid black; display: inline-block; width: 20px; height: 10px;"></span>
		Result Flagging Label:	RIN: 2.60

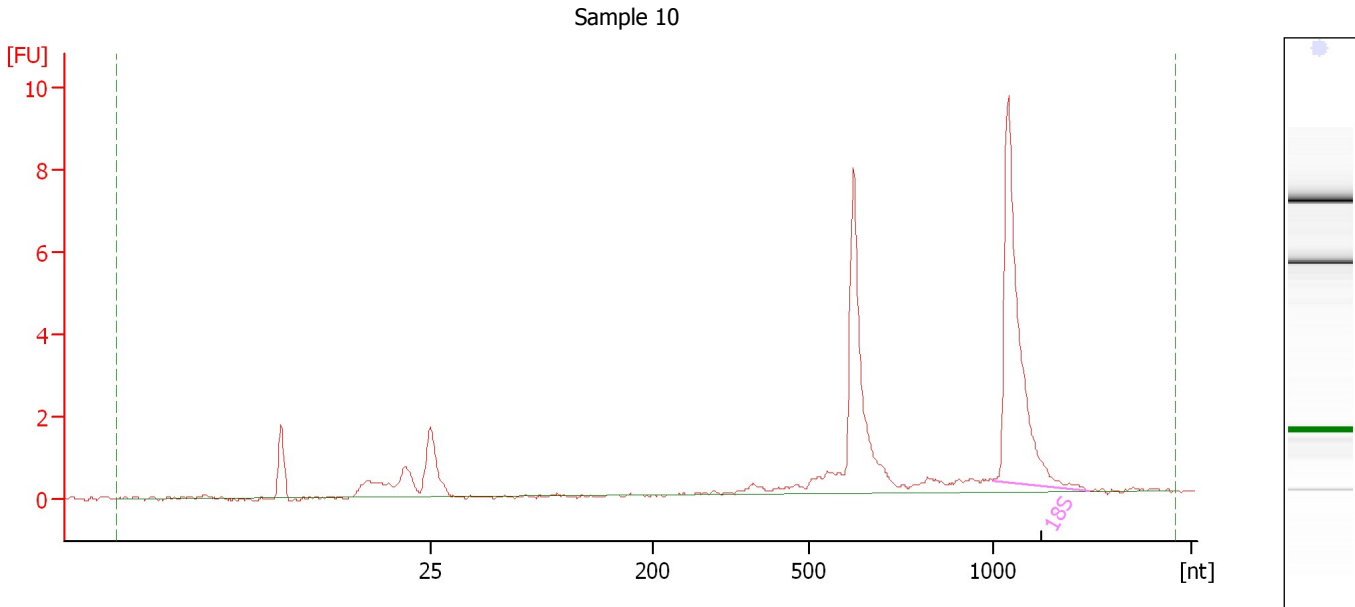
**Fragment table for sample 9 : Sample 9**

Name	Start Size [nt]	End Size [nt]	Area	% of total Area
28S	1,848	1,915	0.1	1.0

Assay Class: Eukaryote Total RNA Nano  
Data Path: C:\...ents and Settings\Bioanalyzer\2013-06-17\2013-06-17\_002.xad

Created: 6/17/2013 3:30:12 PM  
Modified: 6/17/2013 4:01:40 PM

**Electropherogram Summary Continued ...**



**Overall Results for sample 10 : Sample 10**

RNA Area:	31.9	RNA Integrity Number (RIN):	6.2 (B.02.08, Anomaly Threshold(s) manually adapted)
RNA Concentration:	30 ng/μl		
rRNA Ratio [28s / 18s]:	0.0	Result Flagging Color:	<span style="background-color: #ccccff; border: 1px solid black; display: inline-block; width: 20px; height: 10px;"></span>
		Result Flagging Label:	RIN: 6.20

**Fragment table for sample 10 : Sample 10**

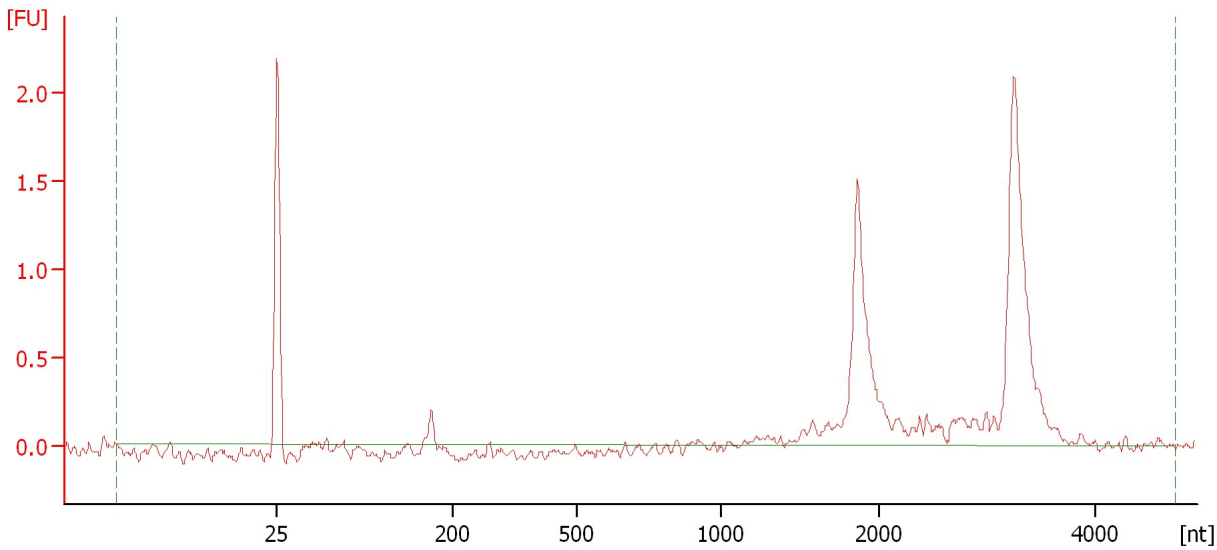
Name	Start Size [nt]	End Size [nt]	Area	% of total Area
18S	999	1,487	11.6	36.4

Assay Class: Eukaryote Total RNA Nano  
Data Path: C:\...ents and Settings\Bioanalyzer\2013-06-17\2013-06-17\_002.xad

Created: 6/17/2013 3:30:12 PM  
Modified: 6/17/2013 4:01:40 PM

**Electropherogram Summary Continued ...**

Sample 11



**Overall Results for sample 11 : Sample 11**

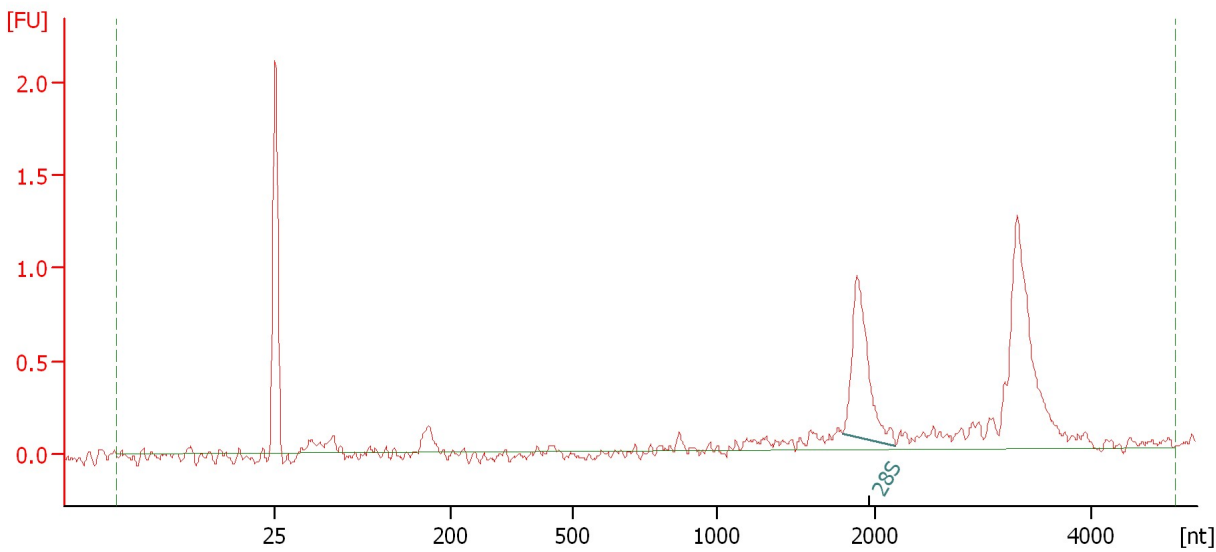
RNA Area:	7.1	RNA Integrity Number (RIN):	2.6 (B.02.08)
RNA Concentration:	7 ng/μl	Result Flagging Color:	<span style="background-color: #ccccff; border: 1px solid black; display: inline-block; width: 20px; height: 10px;"></span>
rRNA Ratio [28s / 18s]:	0.0	Result Flagging Label:	RIN: 2.60

Assay Class: Eukaryote Total RNA Nano  
Data Path: C:\...ents and Settings\Bioanalyzer\2013-06-17\2013-06-17\_002.xad

Created: 6/17/2013 3:30:12 PM  
Modified: 6/17/2013 4:01:40 PM

**Electropherogram Summary Continued ...**

Sample 12



**Overall Results for sample 12 : Sample 12**

RNA Area:	6.3	RNA Integrity Number (RIN):	7.4 (B.02.08, Anomaly Threshold(s) manually adapted)
RNA Concentration:	6 ng/μl		
rRNA Ratio [28s / 18s]:	0.0	Result Flagging Color:	<span style="background-color: #ccccff; border: 1px solid black; display: inline-block; width: 20px; height: 10px;"></span>
		Result Flagging Label:	RIN: 7.40

**Fragment table for sample 12 : Sample 12**

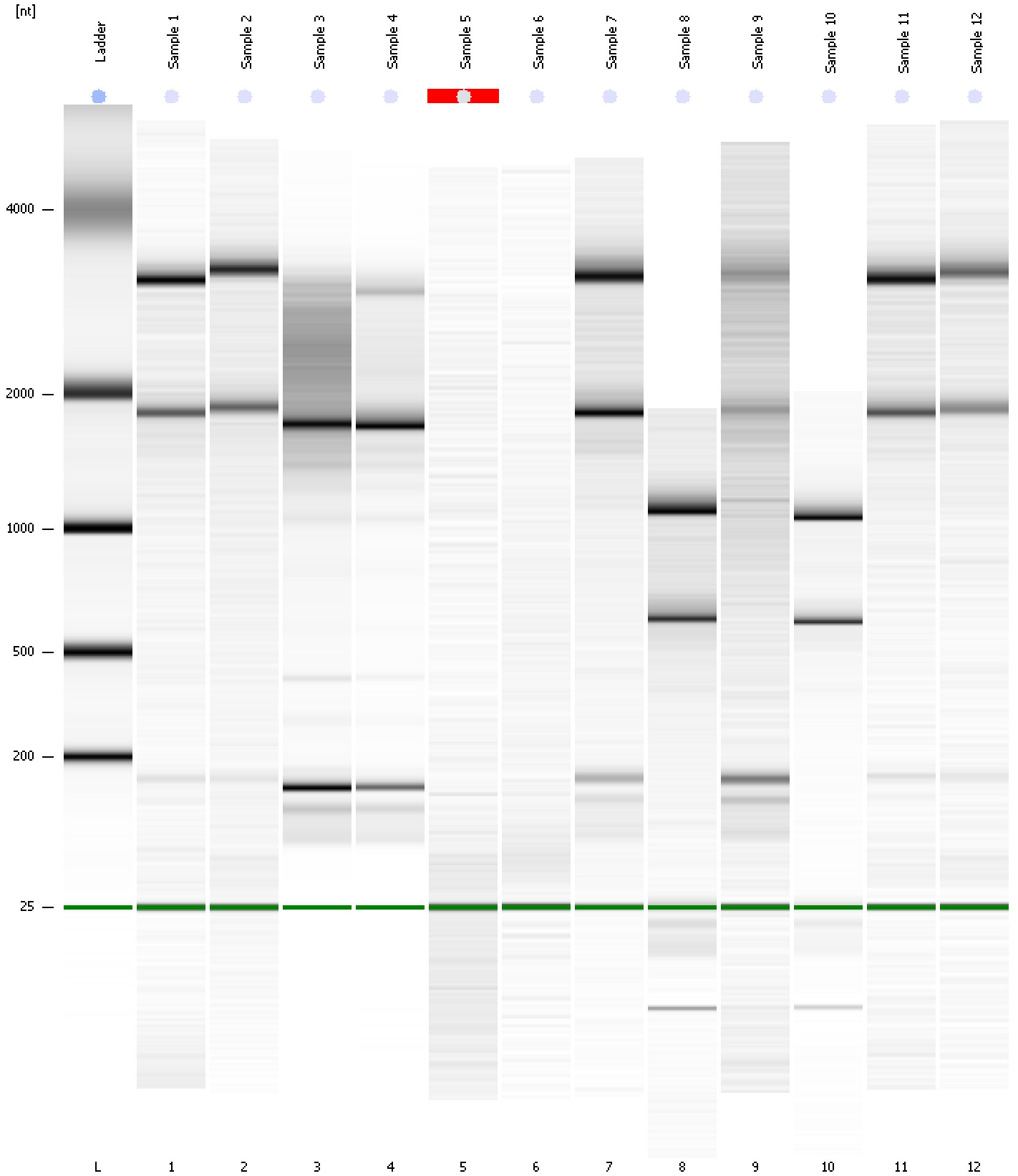
Name	Start Size [nt]	End Size [nt]	Area	% of total Area
28S	1,793	2,195	1.4	22.1



Assay Class: Eukaryote Total RNA Nano  
Data Path: C:\...ents and Settings\Bioanalyzer\2013-06-17\2013-06-17\_002.xad

Created: 6/17/2013 3:30:12 PM  
Modified: 6/17/2013 4:01:40 PM

**Gel Image**



Assay Class: Eukaryote Total RNA Nano  
 Data Path: C:\...ents and Settings\Bioanalyzer\2013-06-17\2013-06-17\_002.xad

Created: 6/17/2013 3:30:12 PM  
 Modified: 6/17/2013 4:01:40 PM

**Run Logbook**

Description	Number	Source	Category	Sub Category	Time	Time Zone	User	Host
Run ended on port 1 (Number of wells acquired: 13)		Instrument	Run		6/17/2013 3:53:59 PM	(GMT --07:00) Pacific Standard Time	UC Davis	D8XSMGH1
Run started on port 1 (File: C:\Documents and Settings\Bioanalyzer\2013-06-17\2013-06-17_002.xad)		Instrument	Run		6/17/2013 3:30:18 PM	(GMT --07:00) Pacific Standard Time	UC Davis	D8XSMGH1
Product Number : G2938B		Instrument	Run		6/17/2013 3:30:18 PM	(GMT --07:00) Pacific Standard Time	UC Davis	D8XSMGH1
Name :		Instrument	Run		6/17/2013 3:30:18 PM	(GMT --07:00) Pacific Standard Time	UC Davis	D8XSMGH1
Vendor : Agilent Technologies		Instrument	Run		6/17/2013 3:30:17 PM	(GMT --07:00) Pacific Standard Time	UC Davis	D8XSMGH1
Serial# : DE13701086		Instrument	Run		6/17/2013 3:30:17 PM	(GMT --07:00) Pacific Standard Time	UC Davis	D8XSMGH1
Firmware : C.01.069		Instrument	Run		6/17/2013 3:30:17 PM	(GMT --07:00) Pacific Standard Time	UC Davis	D8XSMGH1
Cartridge : Electrode		Instrument	Run		6/17/2013 3:30:17 PM	(GMT --07:00) Pacific Standard Time	UC Davis	D8XSMGH1