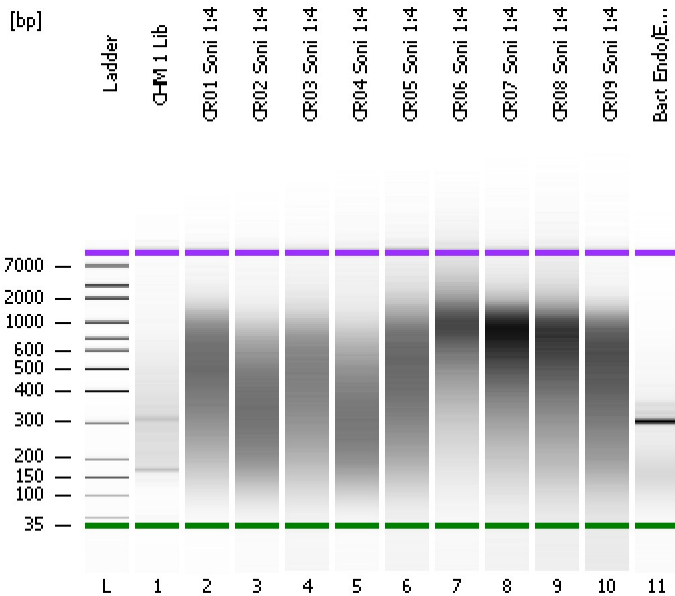


Assay Class: High Sensitivity DNA Assay
Data Path: C:\...ents and Settings\Bioanalyzer\2013-06-18\2013-06-18_001.xad

Created: 6/18/2013 12:13:42 PM
Modified: 6/18/2013 12:59:40 PM

Electrophoresis File Run Summary



Instrument Information:

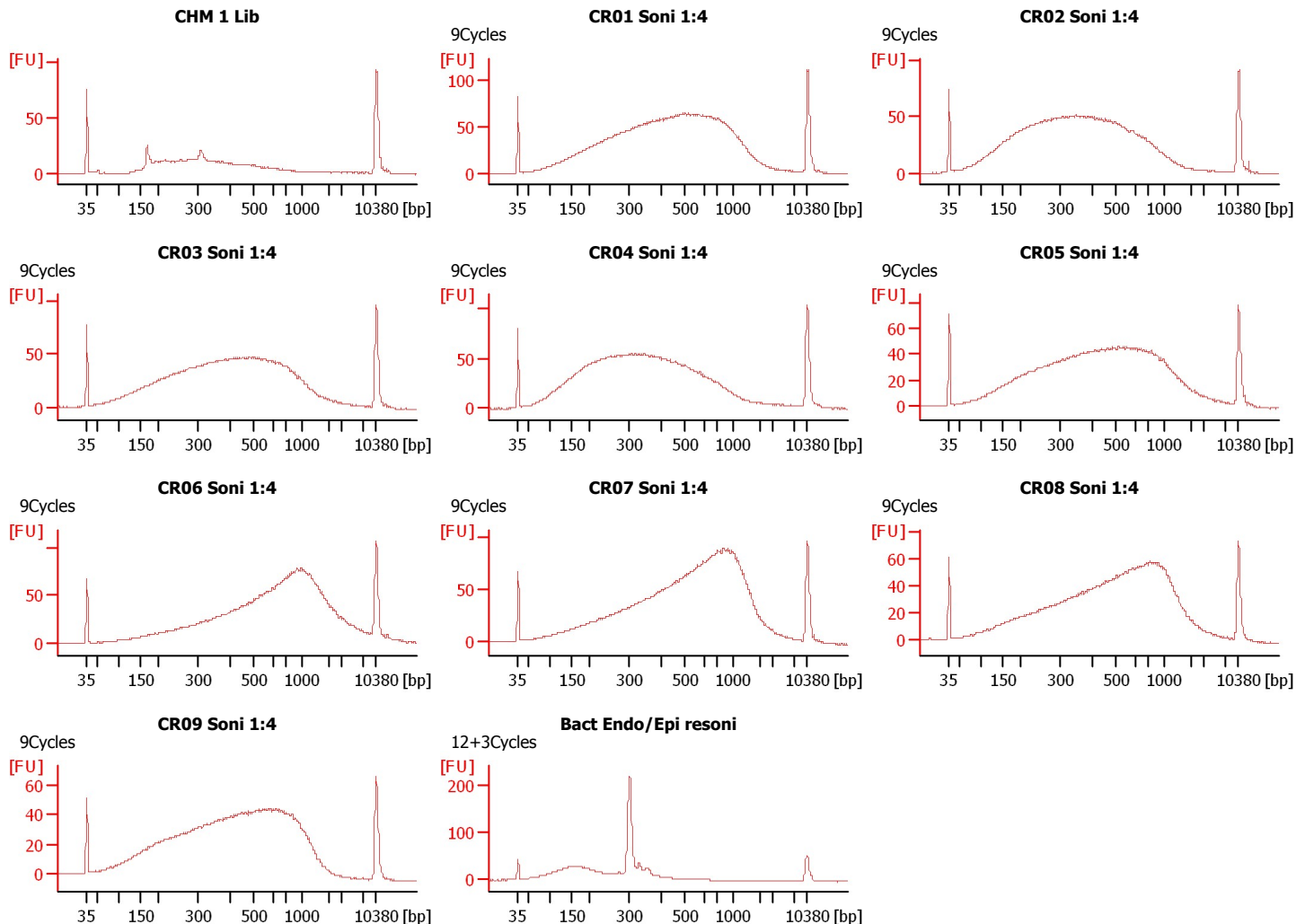
Instrument Name: DE13701086 Firmware: C.01.069
Serial#: DE13701086 Type: G2938B

Assay Information:

Assay Origin Path: C:\Program Files\Agilent\2100 bioanalyzer\2100 expert\assays\dsDNA\High Sensitivity DNA.xsy
Assay Class: High Sensitivity DNA Assay
Version: 1.03
Assay Comments: Copyright © 2003-2010 Agilent Technologies

Chip Information:

Chip Lot #: Reagent Kit Lot #: Chip Comments:



Assay Class: High Sensitivity DNA Assay
Data Path: C:\...ents and Settings\Bioanalyzer\2013-06-18\2013-06-18_001.xad

Created: 6/18/2013 12:13:42 PM
Modified: 6/18/2013 12:59:40 PM

Electrophoresis File Run Summary (Chip Summary)

Sample Name	Sample Comment	Rest. Digest	Status	Observation	Result Label	Result Color
CHM 1 Lib		<input type="checkbox"/>	✓			
CR01 Soni 1:4	9Cycles	<input type="checkbox"/>	✓			
CR02 Soni 1:4	9Cycles	<input type="checkbox"/>	✓			
CR03 Soni 1:4	9Cycles	<input type="checkbox"/>	✓			
CR04 Soni 1:4	9Cycles	<input type="checkbox"/>	✓			
CR05 Soni 1:4	9Cycles	<input type="checkbox"/>	✓			
CR06 Soni 1:4	9Cycles	<input type="checkbox"/>	✓			
CR07 Soni 1:4	9Cycles	<input type="checkbox"/>	✓			
CR08 Soni 1:4	9Cycles	<input type="checkbox"/>	✓			
CR09 Soni 1:4	9Cycles	<input type="checkbox"/>	✓			
Bact Endo/Epi resoni	12+3Cycles	<input type="checkbox"/>	✓			
Ladder		<input type="checkbox"/>	✓			

Chip Lot #

Reagent Kit Lot #

Chip Comments :

Assay Class: High Sensitivity DNA Assay
Data Path: C:\...ents and Settings\Bioanalyzer\2013-06-18\2013-06-18_001.xad

Created: 6/18/2013 12:13:42 PM
Modified: 6/18/2013 12:59:40 PM

Electrophoresis Assay Details

General Analysis Settings

Number of Available Sample and Ladder Wells (Max.) : 12
Minimum Visible Range [s] : 32
Maximum Visible Range [s] : 138
Start Analysis Time Range [s] : 33
End Analysis Time Range [s] : 137.5
Ladder Concentration [pg/μl] : 1950
Uses Standard Area for Ladder Fragments
Lower Marker Concentration [pg/μl] : 125
Upper Marker Concentration [pg/μl] : 75
Used Upper Marker for Quantitation
Standard Curve Fit is Point to Point
Show Data Aligned to Lower and Upper Marker

Integrator Settings

Integration Start Time [s] : 33.05
Integration End Time [s] : 137
Slope Threshold : 0.8
Height Threshold [FU] : 5
Area Threshold : 0.1
Width Threshold [s] : 0.6
Baseline Plateau [s] : 0.5

Filter Settings

Filter Width [s] : 0.5
Polynomial Order : 4

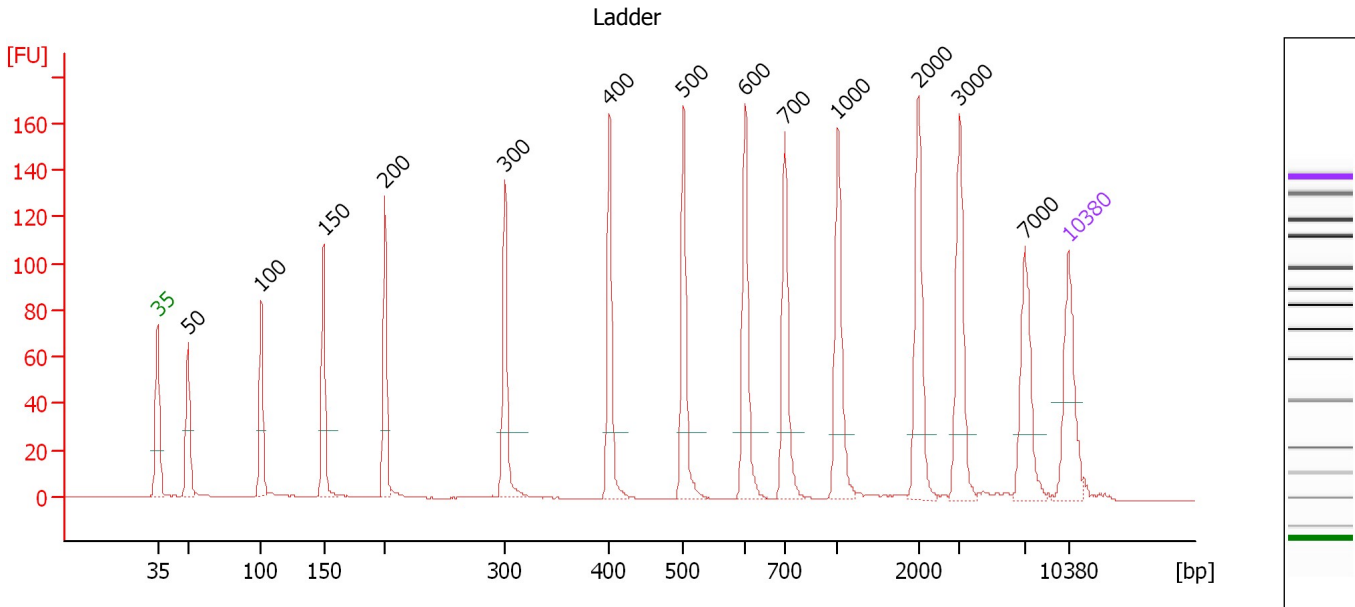
Ladder

Ladder Peak	Size	Area
1	35	160
2	50	210
3	100	208
4	150	221
5	200	242
6	300	270
7	400	305
8	500	306
9	600	336
10	700	321
11	1000	366
12	2000	413
13	3000	411
14	7000	400
15	10380	214

Assay Class: High Sensitivity DNA Assay
 Data Path: C:\...ents and Settings\Bioanalyzer\2013-06-18\2013-06-18_001.xad

Created: 6/18/2013 12:13:42 PM
 Modified: 6/18/2013 12:59:40 PM

Electropherogram Summary



Overall Results for Ladder

Noise: 0.1

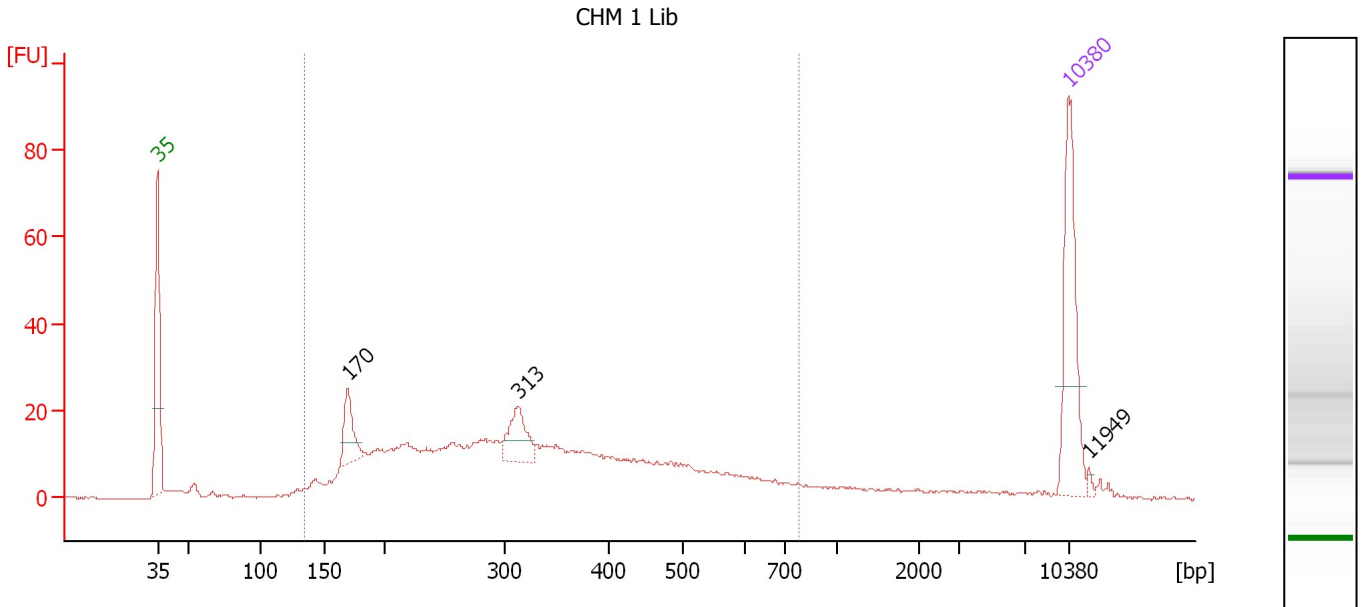
Peak table for Ladder

Peak	Size [bp]	Conc. [pg/μl]	Molarity [pmol/l]	Observations
1	35	125.00	5,411.3	Lower Marker
2	50	150.00	4,545.5	Ladder Peak
3	100	150.00	2,272.7	Ladder Peak
4	150	150.00	1,515.2	Ladder Peak
5	200	150.00	1,136.4	Ladder Peak
6	300	150.00	757.6	Ladder Peak
7	400	150.00	568.2	Ladder Peak
8	500	150.00	454.5	Ladder Peak
9	600	150.00	378.8	Ladder Peak
10	700	150.00	324.7	Ladder Peak
11	1,000	150.00	227.3	Ladder Peak
12	2,000	150.00	113.6	Ladder Peak
13	3,000	150.00	75.8	Ladder Peak
14	7,000	150.00	32.5	Ladder Peak
15	10,380	75.00	10.9	Upper Marker

Assay Class: High Sensitivity DNA Assay
 Data Path: C:\...ents and Settings\Bioanalyzer\2013-06-18\2013-06-18_001.xad

Created: 6/18/2013 12:13:42 PM
 Modified: 6/18/2013 12:59:40 PM

Electropherogram Summary Continued ...



Overall Results for sample 1 : CHM 1 Lib

Number of peaks found: 3 Corr. Area 1: 527.6
 Noise: 0.2

Peak table for sample 1 : CHM 1 Lib

Peak	Size [bp]	Conc. [pg/μl]	Molarity [pmol/l]	Observations
1	35	125.00	5,411.3	Lower Marker
2	170	40.94	365.8	
3	313	40.78	197.6	
4	10,380	75.00	10.9	Upper Marker
5	11,949	0.00	0.0	

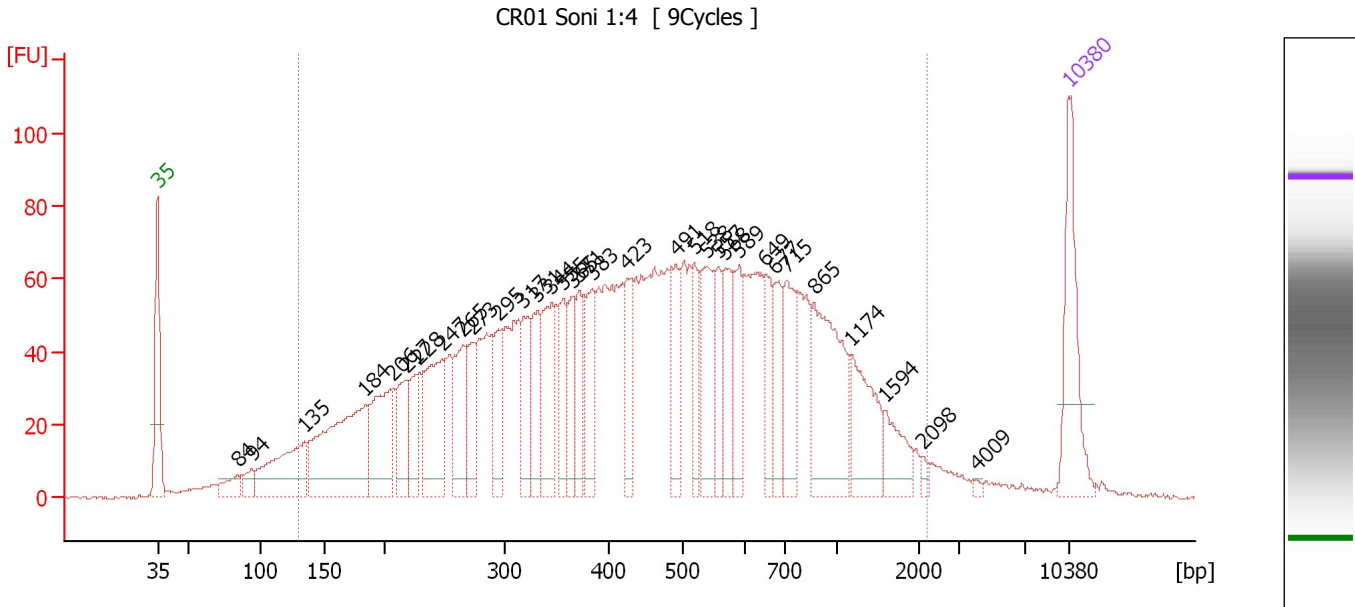
Region table for sample 1 : CHM 1 Lib

From [bp]	To [bp]	Average Size [bp]	Molarity [pmol/l]	Conc. [pg/μl]	Corr. Area	% of Total	Size distribution in CV [%]	Color
134	784	333	4,200.2	741.49	527.6	90	39.3	Blue

Assay Class: High Sensitivity DNA Assay
 Data Path: C:\...ents and Settings\Bioanalyzer\2013-06-18\2013-06-18_001.xad

Created: 6/18/2013 12:13:42 PM
 Modified: 6/18/2013 12:59:40 PM

Electropherogram Summary Continued ...



Overall Results for sample 2 : CR01 Soni 1:4

Number of peaks found: 33 Corr. Area 1: 2,844.4
 Noise: 0.3

Peak table for sample 2 : CR01 Soni 1:4

Peak	Size [bp]	Conc. [pg/μl]	Molarity [pmol/l]	Observations
1	35	125.00	5,411.3	Lower Marker
2	84	23.66	425.6	
3	94	18.27	295.8	
4	135	119.91	1,348.7	
5	184	212.55	1,753.2	
6	206	107.72	792.2	
7	217	59.04	411.6	
8	228	51.71	344.1	
9	247	120.20	736.2	
10	265	73.70	421.2	
11	273	51.83	287.7	
12	295	53.07	272.9	
13	317	61.48	293.7	
14	331	57.40	262.9	
15	344	82.60	363.3	
16	355	50.51	215.4	
17	365	46.55	193.3	
18	371	50.52	206.6	
19	383	60.31	238.5	
20	423	56.94	203.7	
21	491	60.81	187.8	
22	518	44.89	131.4	
23	538	73.36	206.7	
24	557	41.98	114.2	
25	568	57.12	152.3	
26	589	48.98	125.9	

Assay Class: High Sensitivity DNA Assay
 Data Path: C:\...ents and Settings\Bioanalyzer\2013-06-18\2013-06-18_001.xad


Created: 6/18/2013 12:13:42 PM
 Modified: 6/18/2013 12:59:40 PM

Electropherogram Summary Continued ...

... Peak table for sample 2 : CR01 Soni 1:4

Peak	Size [bp]	Conc. [pg/μl]	Molarity [pmol/l]	Observations
27	649	43.83	102.3	
28	677	45.85	102.7	
29	715	61.94	131.3	
30	865	134.65	235.8	
31	1,174	70.22	90.6	
32	1,594	34.14	32.5	
33	2,098	4.62	3.3	
34	4,009	2.61	1.0	
35	10,380	75.00	10.9	Upper Marker

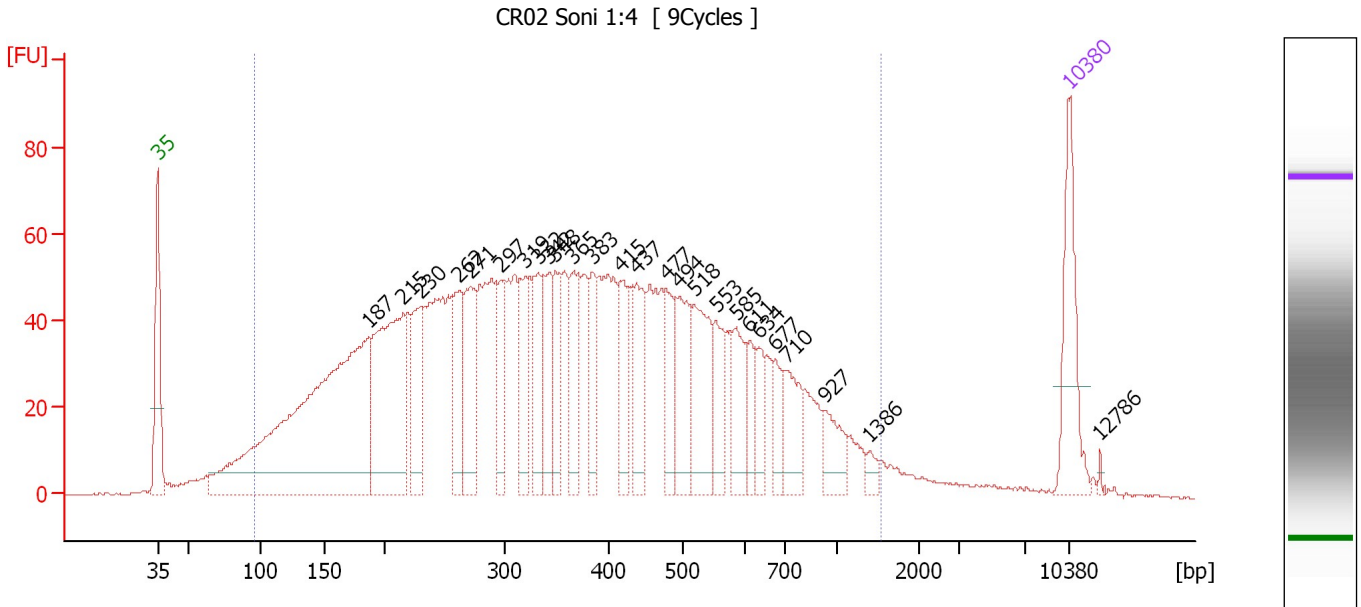
Region table for sample 2 : CR01 Soni 1:4

From [bp]	To [bp]	Average Size [bp]	Molarity [pmol/l]	Conc. [pg/μl]	Corr. Area	% of Total	Size distribution in CV [%]	Color
130	2,231	532	13,340.8	3,002.91	2,844.4	94	64.0	

Assay Class: High Sensitivity DNA Assay
 Data Path: C:\...ents and Settings\Bioanalyzer\2013-06-18\2013-06-18_001.xad

Created: 6/18/2013 12:13:42 PM
 Modified: 6/18/2013 12:59:40 PM

Electropherogram Summary Continued ...



Overall Results for sample 3 : CR02 Soni 1:4

Number of peaks found: 26 Corr. Area 1: 2,528.8
 Noise: 0.3

Peak table for sample 3 : CR02 Soni 1:4

Peak	Size [bp]	Conc. [pg/μl]	Molarity [pmol/l]	Observations
1	35	125.00	5,411.3	Lower Marker
2	187	656.50	5,323.2	
3	215	267.89	1,886.9	
4	230	102.07	673.5	
5	262	92.48	535.6	
6	271	106.36	594.3	
7	297	66.20	338.1	
8	319	72.59	344.6	
9	332	67.00	305.8	
10	342	69.92	309.4	
11	348	60.77	264.5	
12	365	66.40	275.3	
13	383	55.51	219.4	
14	415	61.99	226.4	
15	437	70.00	242.8	
16	477	56.02	178.1	
17	494	78.62	240.9	
18	518	102.69	300.5	
19	553	52.49	143.9	
20	585	63.44	164.4	
21	611	27.19	67.4	
22	634	32.16	76.8	
23	677	30.97	69.3	
24	710	52.30	111.6	
25	927	36.65	59.9	
26	1,386	9.86	10.8	


Assay Class: High Sensitivity DNA Assay
Data Path: C:\...ents and Settings\Bioanalyzer\2013-06-18\2013-06-18_001.xad

Created: 6/18/2013 12:13:42 PM
Modified: 6/18/2013 12:59:40 PM

Electropherogram Summary Continued ...**... Peak table for sample 3 : CR02 Soni 1:4**

Peak	Size [bp]	Conc. [pg/ μ l]	Molarity [pmol/l]	Observations
27	10,380	75.00	10.9	Upper Marker
28	12,786	0.00	0.0	

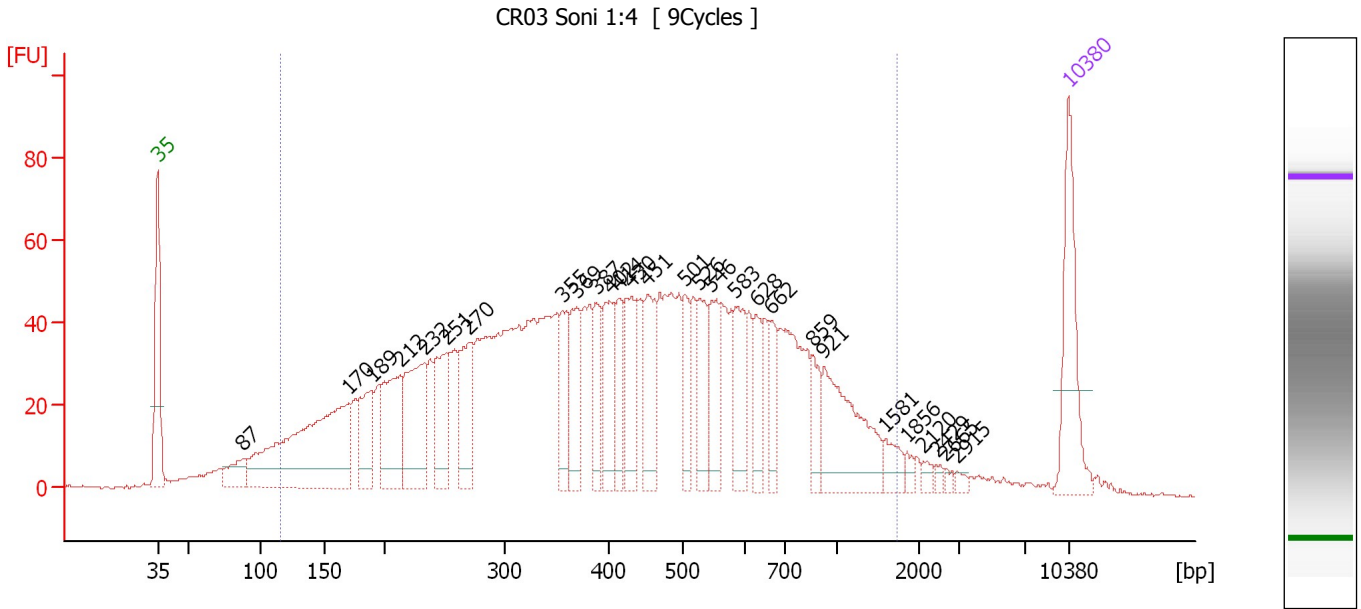
Region table for sample 3 : CR02 Soni 1:4

From [bp]	To [bp]	Average Size [bp]	Molarity [pmol/l]	Conc. [pg/ μ l]	Corr. Area	% of Total	Size distribution in CV [%]	Color
95	1,547	399	19,634.7	3,477.50	2,528.8	95	54.9	

Assay Class: High Sensitivity DNA Assay
 Data Path: C:\...ents and Settings\Bioanalyzer\2013-06-18\2013-06-18_001.xad

Created: 6/18/2013 12:13:42 PM
 Modified: 6/18/2013 12:59:40 PM

Electropherogram Summary Continued ...



Overall Results for sample 4 : CR03 Soni 1:4

Number of peaks found: 28 Corr. Area 1: 2,210.4
 Noise: 0.4

Peak table for sample 4 : CR03 Soni 1:4

Peak	Size [bp]	Conc. [pg/μl]	Molarity [pmol/l]	Observations
1	35	125.00	5,411.3	Lower Marker
2	87	35.77	619.6	
3	170	299.47	2,665.8	
4	189	69.90	559.7	
5	212	102.52	731.1	
6	232	123.03	802.2	
7	251	79.82	481.4	
8	270	78.75	441.8	
9	355	51.93	221.6	
10	369	64.63	265.7	
11	387	43.57	170.4	
12	402	65.67	247.4	
13	414	46.19	169.1	
14	430	65.90	232.5	
15	451	68.41	229.8	
16	501	40.98	123.9	
17	526	53.61	154.5	
18	546	57.53	159.8	
19	583	54.96	142.8	
20	628	34.33	82.8	
21	662	33.16	75.8	
22	859	28.13	49.6	
23	921	108.12	177.8	
24	1,581	17.71	17.0	
25	1,856	6.57	5.4	
26	2,120	5.42	3.9	


Assay Class: High Sensitivity DNA Assay
Data Path: C:\...ents and Settings\Bioanalyzer\2013-06-18\2013-06-18_001.xad

Created: 6/18/2013 12:13:42 PM
Modified: 6/18/2013 12:59:40 PM

Electropherogram Summary Continued ...**... Peak table for sample 4 : CR03 Soni 1:4**

Peak	Size [bp]	Conc. [pg/ μ l]	Molarity [pmol/l]	Observations
27	2,429	3.48	2.2	
28	2,665	3.53	2.0	
29	2,915	4.20	2.2	
30	10,380	75.00	10.9	Upper Marker

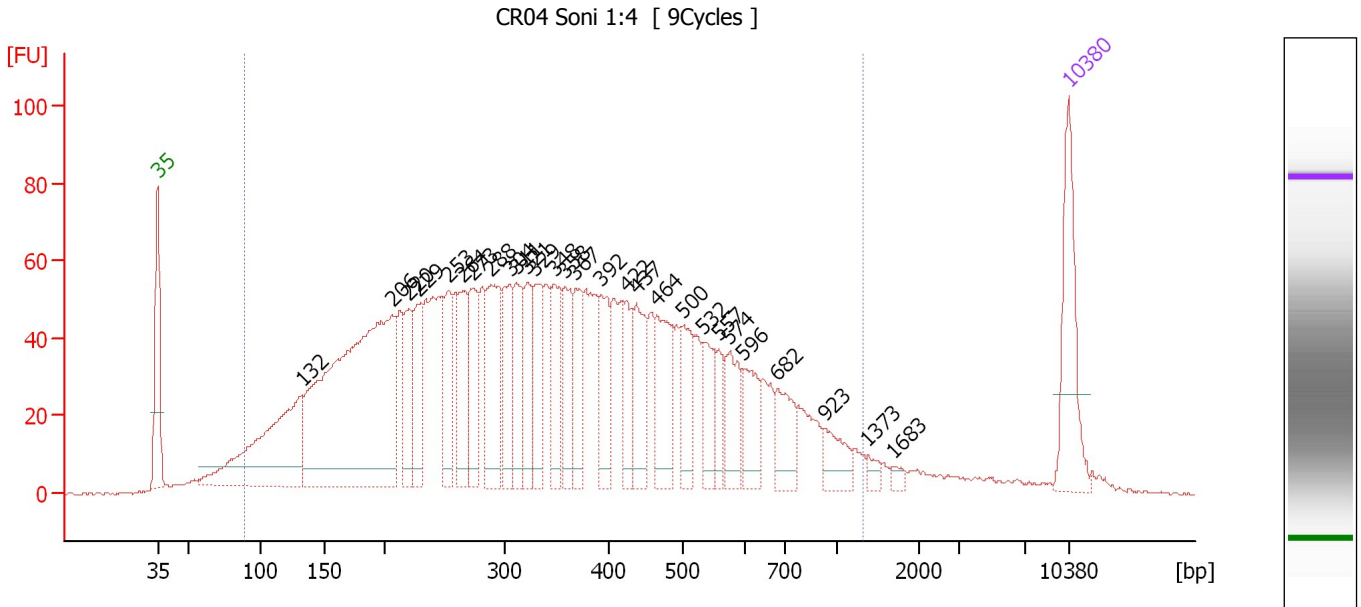
Region table for sample 4 : CR03 Soni 1:4

From [bp]	To [bp]	Average Size [bp]	Molarity [pmol/l]	Conc. [pg/ μ l]	Corr. Area	% of Total	Size distribution in CV [%]	Color
115	1,747	471	13,457.8	2,755.71	2,210.4	92	58.1	

Assay Class: High Sensitivity DNA Assay
 Data Path: C:\...ents and Settings\Bioanalyzer\2013-06-18\2013-06-18_001.xad

Created: 6/18/2013 12:13:42 PM
 Modified: 6/18/2013 12:59:40 PM

Electropherogram Summary Continued ...



Overall Results for sample 5 : CR04 Soni 1:4

Number of peaks found: 28 Corr. Area 1: 2,661.4
 Noise: 0.4

Peak table for sample 5 : CR04 Soni 1:4

Peak	Size [bp]	Conc. [pg/μl]	Molarity [pmol/l]	Observations
1	35	125.00	5,411.3	Lower Marker
2	132	255.12	2,919.1	
3	206	554.97	4,083.2	
4	220	70.64	486.6	
5	229	66.36	439.5	
6	253	71.17	426.1	
7	264	78.99	452.5	
8	273	78.16	434.1	
9	288	112.70	592.2	
10	304	73.86	367.5	
11	311	73.02	355.7	
12	321	54.66	257.8	
13	329	66.10	304.4	
14	348	66.57	290.2	
15	358	64.26	272.1	
16	367	59.02	243.4	
17	392	63.71	246.3	
18	422	43.81	157.2	
19	437	62.68	217.5	
20	464	80.21	262.1	
21	500	53.92	163.4	
22	532	45.88	130.7	
23	557	26.08	70.9	
24	574	50.11	132.2	
25	596	47.21	120.1	
26	682	46.77	104.0	

Assay Class: High Sensitivity DNA Assay
 Data Path: C:\...ents and Settings\Bioanalyzer\2013-06-18\2013-06-18_001.xad


Created: 6/18/2013 12:13:42 PM
 Modified: 6/18/2013 12:59:40 PM

Electropherogram Summary Continued ...

... Peak table for sample 5 : CR04 Soni 1:4

Peak	Size [bp]	Conc. [pg/μl]	Molarity [pmol/l]	Observations
27	923	28.86	47.4	
28	1,373	8.05	8.9	
29	1,683	5.87	5.3	
30	10,380	75.00	10.9	Upper Marker

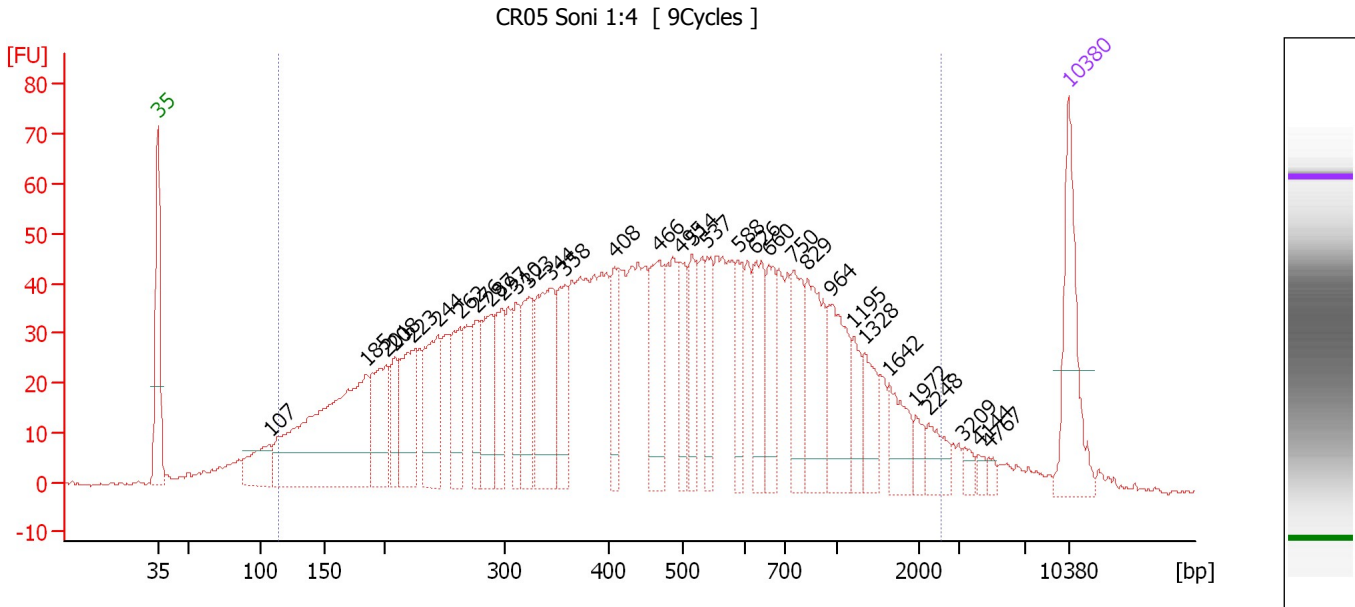
Region table for sample 5 : CR04 Soni 1:4

From [bp]	To [bp]	Average Size [bp]	Molarity [pmol/l]	Conc. [pg/μl]	Corr. Area	% of Total	Size distribution in CV [%]	Color
89	1,308	373	19,171.5	3,203.60	2,661.4	94	52.3	

Assay Class: High Sensitivity DNA Assay
 Data Path: C:\...ents and Settings\Bioanalyzer\2013-06-18\2013-06-18_001.xad

Created: 6/18/2013 12:13:42 PM
 Modified: 6/18/2013 12:59:40 PM

Electropherogram Summary Continued ...



Setpoint Deviations for sample 6 : CR05 Soni 1:4

Height Threshold [FU] : 7

Overall Results for sample 6 : CR05 Soni 1:4

Number of peaks found: 33 Corr. Area 1: 2,206.9
 Noise: 0.4

Peak table for sample 6 : CR05 Soni 1:4

Peak	Size [bp]	Conc. [pg/µl]	Molarity [pmol/l]	Observations
1	35	125.00	5,411.3	Lower Marker
2	107	57.25	810.6	
3	185	331.58	2,716.9	
4	201	94.57	713.3	
5	208	43.29	315.0	
6	223	87.87	595.9	
7	244	101.43	628.8	
8	262	64.76	374.2	
9	276	51.56	283.2	
10	287	73.84	389.3	
11	297	63.19	322.0	
12	310	48.58	237.2	
13	323	74.71	350.4	
14	344	125.57	552.7	
15	358	69.94	296.4	
16	408	50.67	188.3	
17	466	85.69	278.9	
18	495	52.48	160.5	
19	514	45.25	133.4	
20	537	43.90	123.8	
21	588	40.02	103.1	
22	626	63.16	152.8	

Assay Class: High Sensitivity DNA Assay
 Data Path: C:\...ents and Settings\Bioanalyzer\2013-06-18\2013-06-18_001.xad

Created: 6/18/2013 12:13:42 PM
 Modified: 6/18/2013 12:59:40 PM

Electropherogram Summary Continued ...

... Peak table for sample 6 : CR05 Soni 1:4

Peak	Size [bp]	Conc. [pg/μl]	Molarity [pmol/l]	Observations
23	660	47.65	109.4	
24	750	61.73	124.7	
25	829	88.86	162.5	
26	964	73.92	116.2	
27	1,195	27.07	34.3	
28	1,328	34.33	39.2	
29	1,642	34.53	31.9	
30	1,972	13.04	10.0	
31	2,248	22.12	14.9	
32	3,209	8.40	4.0	
33	4,144	5.57	2.0	
34	4,767	5.04	1.6	
35	▶ 10,380	75.00	10.9	Upper Marker

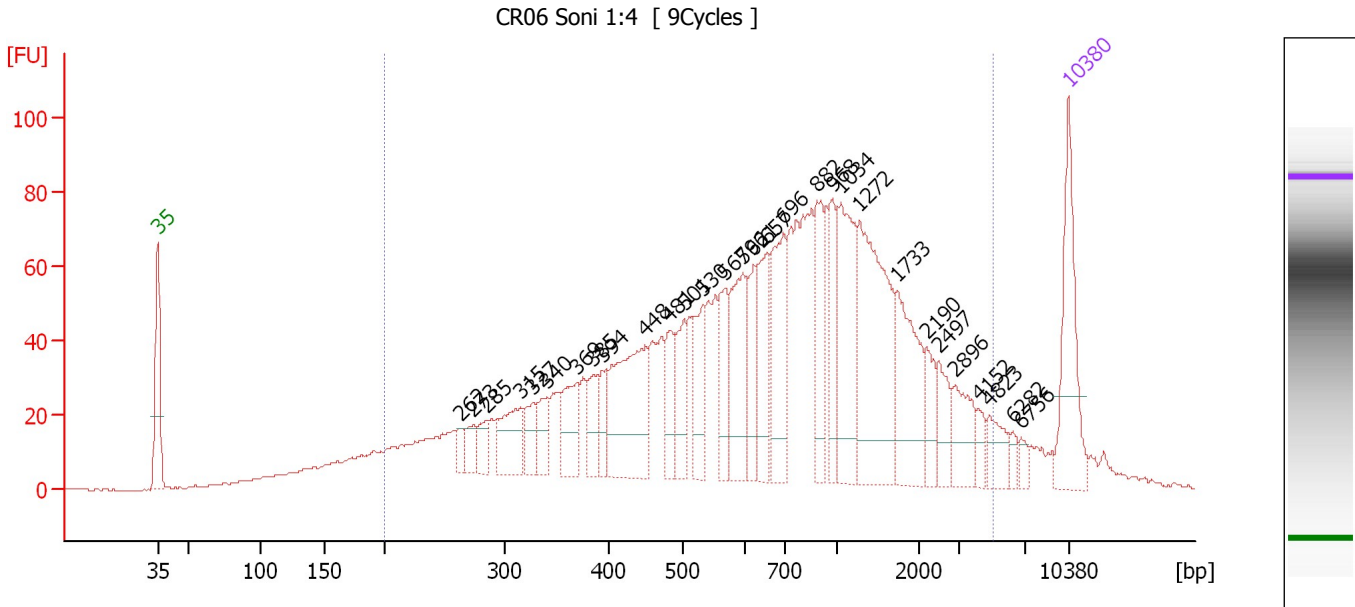
Region table for sample 6 : CR05 Soni 1:4

From [bp]	To [bp]	Average Size [bp]	Molarity [pmol/l]	Conc. [pg/μl]	Corr. Area	% of Total	Size distribution in CV [%]	Color
113	2,540	553	14,014.1	3,017.87	2,206.9	94	72.3	■

Assay Class: High Sensitivity DNA Assay
 Data Path: C:\...ents and Settings\Bioanalyzer\2013-06-18\2013-06-18_001.xad

Created: 6/18/2013 12:13:42 PM
 Modified: 6/18/2013 12:59:40 PM

Electropherogram Summary Continued ...



Setpoint Deviations for sample 7 : CR06 Soni 1:4

Height Threshold [FU] : 12

Overall Results for sample 7 : CR06 Soni 1:4

Number of peaks found: 30 Corr. Area 1: 2,199.7
 Noise: 0.3

Peak table for sample 7 : CR06 Soni 1:4

Peak	Size [bp]	Conc. [pg/μl]	Molarity [pmol/l]	Observations
1	35	125.00	5,411.3	Lower Marker
2	262	14.06	81.2	
3	273	18.96	105.1	
4	285	20.13	107.0	
5	315	56.99	274.4	
6	327	27.74	128.6	
7	340	29.31	130.5	
8	369	45.85	188.4	
9	385	29.34	115.6	
10	394	24.55	94.3	
11	448	131.46	444.4	
12	481	38.83	122.3	
13	501	40.02	121.0	
14	530	50.06	143.1	
15	567	47.56	127.1	
16	596	76.58	194.7	
17	621	47.54	115.9	
18	657	60.47	139.4	
19	696	89.03	193.8	
20	882	53.65	92.2	
21	968	44.43	69.5	
22	1,034	96.58	141.5	

Assay Class: High Sensitivity DNA Assay
 Data Path: C:\...ents and Settings\Bioanalyzer\2013-06-18\2013-06-18_001.xad


Created: 6/18/2013 12:13:42 PM
 Modified: 6/18/2013 12:59:40 PM

Electropherogram Summary Continued ...

... Peak table for sample 7 : CR06 Soni 1:4

Peak	Size [bp]	Conc. [pg/μl]	Molarity [pmol/l]	Observations
23	1,272	154.61	184.1	
24	1,733	82.71	72.3	
25	2,190	22.00	15.2	
26	2,497	26.54	16.1	
27	2,896	33.96	17.8	
28	4,152	10.93	4.0	
29	4,823	21.46	6.7	
30	6,282	6.70	1.6	
31	6,756	6.34	1.4	
32	▶ 10,380	75.00	10.9	Upper Marker

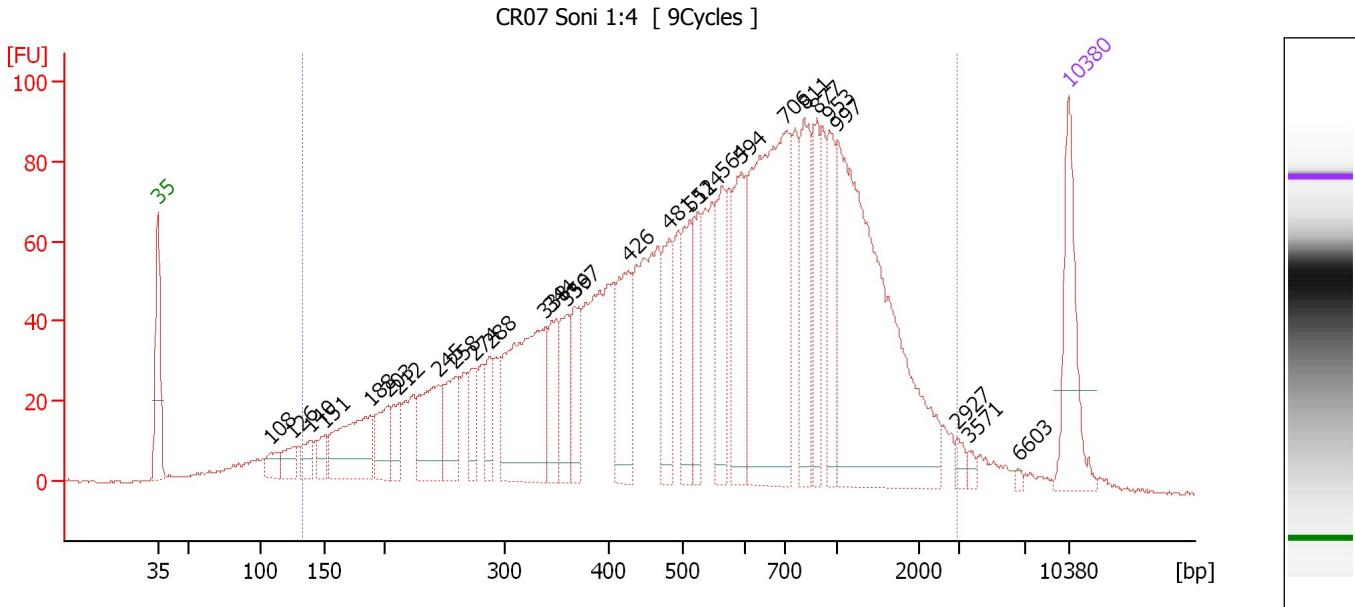
Region table for sample 7 : CR06 Soni 1:4

From [bp]	To [bp]	Average Size [bp]	Molarity [pmol/l]	Conc. [pg/μl]	Corr. Area	% of Total	Size distribution in CV [%]	Color
200	5,020	957	6,168.0	2,128.03	2,199.7	90	83.6	

Assay Class: High Sensitivity DNA Assay
 Data Path: C:\...ents and Settings\Bioanalyzer\2013-06-18\2013-06-18_001.xad

Created: 6/18/2013 12:13:42 PM
 Modified: 6/18/2013 12:59:40 PM

Electropherogram Summary Continued ...



Overall Results for sample 8 : CR07 Soni 1:4

Number of peaks found: 29 Corr. Area 1: 2,898.8
 Noise: 0.4

Peak table for sample 8 : CR07 Soni 1:4

Peak	Size [bp]	Conc. [pg/μl]	Molarity [pmol/l]	Observations
1	35	125.00	5,411.3	Lower Marker
2	108	20.52	288.9	
3	126	24.67	297.3	
4	140	25.12	272.5	
5	151	22.66	228.0	
6	188	115.59	931.7	
7	203	51.78	386.9	
8	212	31.62	226.1	
9	245	90.53	560.6	
10	258	67.43	395.8	
11	274	37.55	207.5	
12	288	36.84	194.0	
13	338	202.74	907.6	
14	344	58.44	257.4	
15	359	52.11	220.0	
16	367	56.89	234.9	
17	426	91.07	323.9	
18	481	72.85	229.5	
19	511	71.95	213.5	
20	524	56.11	162.2	
21	564	79.06	212.4	
22	594	101.36	258.5	
23	706	332.31	713.5	
24	811	92.19	172.2	
25	877	61.04	105.5	
26	953	61.28	97.4	

Assay Class: High Sensitivity DNA Assay
 Data Path: C:\...ents and Settings\Bioanalyzer\2013-06-18\2013-06-18_001.xad


Created: 6/18/2013 12:13:42 PM
 Modified: 6/18/2013 12:59:40 PM

Electropherogram Summary Continued ...

... Peak table for sample 8 : CR07 Soni 1:4

Peak	Size [bp]	Conc. [pg/μl]	Molarity [pmol/l]	Observations
27	997	384.21	583.8	
28	2,927	8.02	4.2	
29	3,571	4.64	2.0	
30	6,603	2.61	0.6	
31	10,380	75.00	10.9	Upper Marker

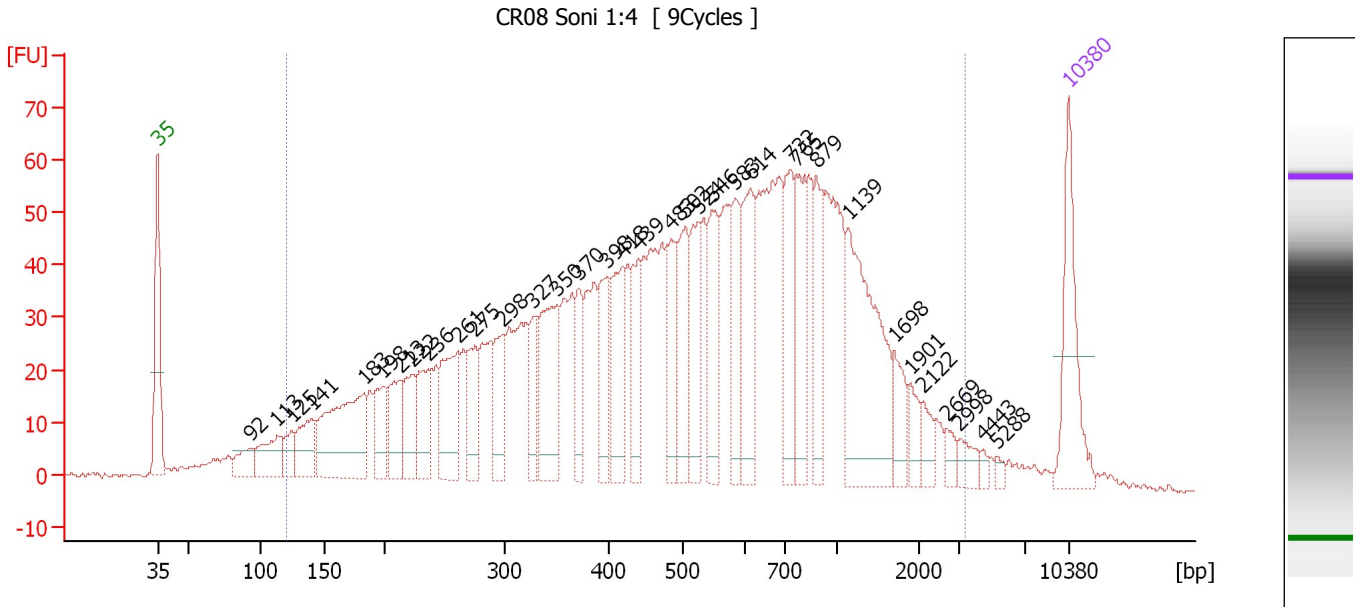
Region table for sample 8 : CR07 Soni 1:4

From [bp]	To [bp]	Average Size [bp]	Molarity [pmol/l]	Conc. [pg/μl]	Corr. Area	% of Total	Size distribution in CV [%]	Color
132	2,949	692	11,835.6	3,197.24	2,898.8	95	67.9	

Assay Class: High Sensitivity DNA Assay
 Data Path: C:\...ents and Settings\Bioanalyzer\2013-06-18\2013-06-18_001.xad

Created: 6/18/2013 12:13:42 PM
 Modified: 6/18/2013 12:59:40 PM

Electropherogram Summary Continued ...



Overall Results for sample 9 : CR08 Soni 1:4

Number of peaks found: 35 Corr. Area 1: 2,176.7
 Noise: 0.4

Peak table for sample 9 : CR08 Soni 1:4

Peak	Size [bp]	Conc. [pg/μl]	Molarity [pmol/l]	Observations
1	35	125.00	5,411.3	Lower Marker
2	92	32.57	533.8	
3	113	55.48	746.7	
4	125	28.95	352.2	
5	141	58.99	635.1	
6	183	170.71	1,412.8	
7	198	48.09	368.1	
8	213	63.00	449.1	
9	222	53.93	367.6	
10	236	69.26	444.0	
11	261	97.73	567.9	
12	275	57.54	317.2	
13	298	56.05	284.9	
14	327	45.44	210.4	
15	350	108.78	471.2	
16	370	47.61	194.7	
17	398	62.84	239.3	
18	418	79.10	286.5	
19	439	54.32	187.7	
20	483	70.08	219.7	
21	502	79.75	240.6	
22	524	71.17	205.6	
23	546	72.13	200.0	
24	583	58.90	153.0	
25	614	92.44	228.3	
26	732	80.55	166.6	

Assay Class: High Sensitivity DNA Assay
 Data Path: C:\...ents and Settings\Bioanalyzer\2013-06-18\2013-06-18_001.xad

Created: 6/18/2013 12:13:42 PM
 Modified: 6/18/2013 12:59:40 PM

Electropherogram Summary Continued ...

... Peak table for sample 9 : CR08 Soni 1:4

Peak	Size [bp]	Conc. [pg/µl]	Molarity [pmol/l]	Observations
27	765	78.30	155.0	
28	879	51.85	89.3	
29	1,139	166.22	221.1	
30	1,698	28.45	25.4	
31	1,901	17.71	14.1	
32	2,122	17.31	12.4	
33	2,669	11.48	6.5	
34	2,998	14.41	7.3	
35	4,443	4.59	1.6	
36	5,288	4.74	1.4	
37	▶ 10,380	75.00	10.9	Upper Marker

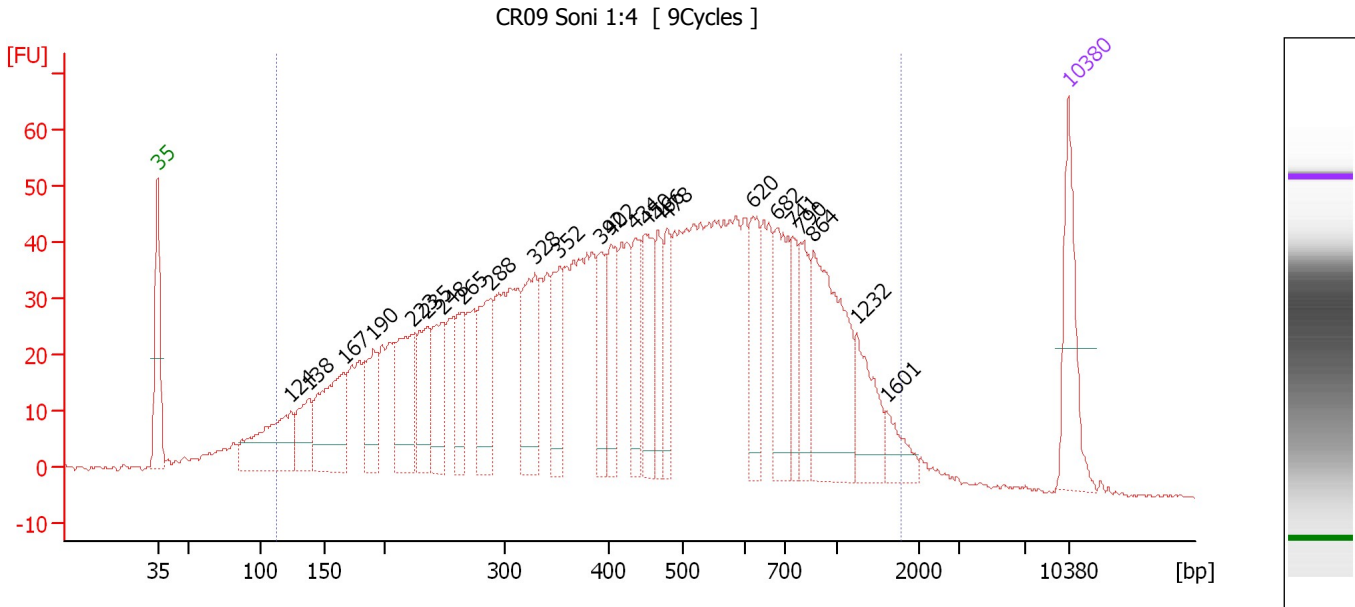
Region table for sample 9 : CR08 Soni 1:4

From [bp]	To [bp]	Average Size [bp]	Molarity [pmol/l]	Conc. [pg/µl]	Corr. Area	% of Total	Size distribution in CV [%]	Color
120	3,371	651	13,467.8	3,276.75	2,176.7	94	74.2	

Assay Class: High Sensitivity DNA Assay
 Data Path: C:\...ents and Settings\Bioanalyzer\2013-06-18\2013-06-18_001.xad

Created: 6/18/2013 12:13:42 PM
 Modified: 6/18/2013 12:59:40 PM

Electropherogram Summary Continued ...



Overall Results for sample 10 : CR09 Soni 1:4

Number of peaks found: 24 Corr. Area 1: 2,001.0
 Noise: 0.4

Peak table for sample 10 : CR09 Soni 1:4

Peak	Size [bp]	Conc. [pg/μl]	Molarity [pmol/l]	Observations
1	35	125.00	5,411.3	Lower Marker
2	124	145.18	1,771.6	
3	138	68.50	752.8	
4	167	150.78	1,370.9	
5	190	78.87	628.0	
6	223	119.80	814.2	
7	235	89.99	580.2	
8	248	86.53	529.5	
9	265	67.92	388.2	
10	288	107.59	565.8	
11	328	119.45	551.8	
12	352	84.17	362.2	
13	392	61.80	238.9	
14	402	70.89	267.2	
15	434	67.16	234.5	
16	450	85.50	287.9	
17	466	57.98	188.5	
18	478	58.06	184.2	
19	620	68.68	167.9	
20	682	96.43	214.3	
21	741	48.00	98.1	
22	790	55.42	106.3	
23	864	183.16	321.2	
24	1,232	61.72	75.9	
25	1,601	27.22	25.8	
26	10,380	75.00	10.9	Upper Marker

Assay Class: High Sensitivity DNA Assay
Data Path: C:\...ents and Settings\Bioanalyzer\2013-06-18\2013-06-18_001.xad

Created: 6/18/2013 12:13:42 PM
Modified: 6/18/2013 12:59:40 PM

Electropherogram Summary Continued ...

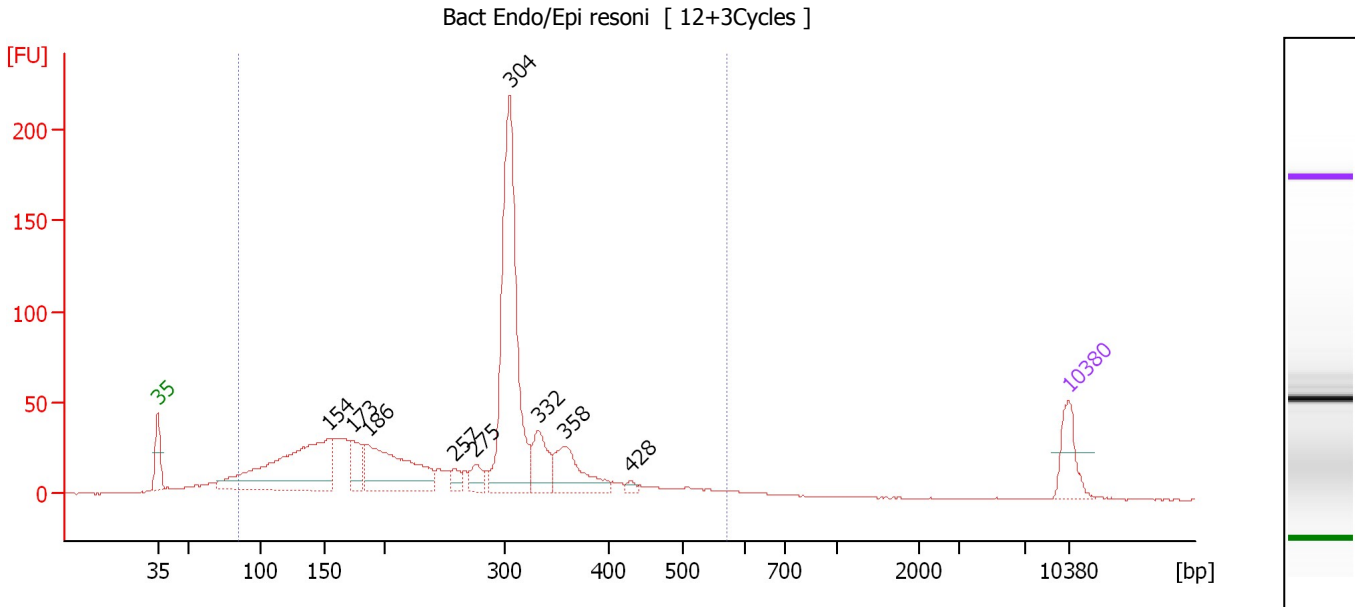
... Region table for sample 10 : **CR09 Soni 1:4**

From [bp]	To [bp]	Average Size [bp]	Molarity [pmol/l]	Conc. [pg/μl]	Corr. Area	% of Total	Size distribution in CV [%]	Color
112	1,794	504	16,731.1	3,565.91	2,001.0	95	58.3	■

Assay Class: High Sensitivity DNA Assay
 Data Path: C:\...ents and Settings\Bioanalyzer\2013-06-18\2013-06-18_001.xad

Created: 6/18/2013 12:13:42 PM
 Modified: 6/18/2013 12:59:40 PM

Electropherogram Summary Continued ...



Overall Results for sample 11 : Bact Endo/Epi resoni

Number of peaks found: 9 Corr. Area 1: 1,312.7
 Noise: 0.2

Peak table for sample 11 : Bact Endo/Epi resoni

Peak	Size [bp]	Conc. [pg/µl]	Molarity [pmol/l]	Observations
1	35	125.00	5,411.3	Lower Marker
2	154	589.80	5,798.2	
3	173	99.89	874.6	
4	186	361.88	2,947.5	
5	257	33.12	194.9	
6	275	45.35	249.8	
7	304	804.57	4,006.5	
8	332	120.26	549.4	
9	358	156.56	663.0	
10	428	12.64	44.7	
11	10,380	75.00	10.9	Upper Marker

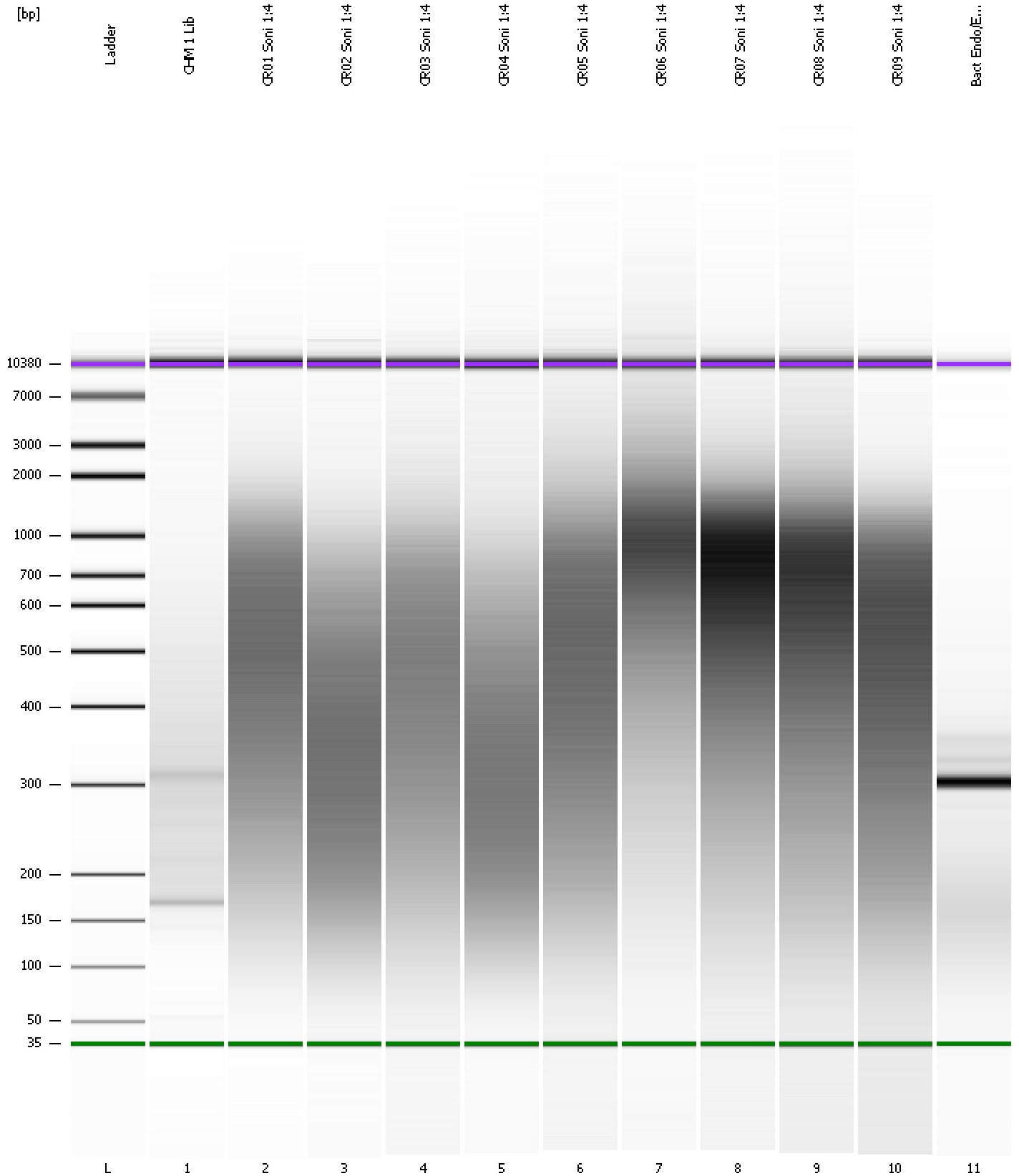
Region table for sample 11 : Bact Endo/Epi resoni

From [bp]	To [bp]	Average Size [bp]	Molarity [pmol/l]	Conc. [pg/µl]	Corr. Area	% of Total	Size distribution in CV [%]	Color
85	569	263	20,556.6	2,778.65	1,312.7	93	35.8	Blue

Assay Class: High Sensitivity DNA Assay
Data Path: C:\...ents and Settings\Bioanalyzer\2013-06-18\2013-06-18_001.xad

Created: 6/18/2013 12:13:42 PM
Modified: 6/18/2013 12:59:40 PM

Gel Image



Assay Class: High Sensitivity DNA Assay
 Data Path: C:\...ents and Settings\Bioanalyzer\2013-06-18\2013-06-18_001.xad

Created: 6/18/2013 12:13:42 PM
 Modified: 6/18/2013 12:59:40 PM

Run Logbook

Description	Number	Source	Category	Sub Category	Time	Time Zone	User	Host
Run ended on port 1 (Number of wells acquired: 12)		Instrument	Run		6/18/2013 12:55:01 PM	(GMT --07:00) Pacific Standard Time	UC Davis	D8XSMGH1
Run started on port 1 (File: C:\Documents and Settings\Bioanalyzer\2013-06-18\2013-06-18_001.xad)		Instrument	Run		6/18/2013 12:13:47 PM	(GMT --07:00) Pacific Standard Time	UC Davis	D8XSMGH1
Product Number : G2938B		Instrument	Run		6/18/2013 12:13:47 PM	(GMT --07:00) Pacific Standard Time	UC Davis	D8XSMGH1
Name :		Instrument	Run		6/18/2013 12:13:47 PM	(GMT --07:00) Pacific Standard Time	UC Davis	D8XSMGH1
Vendor : Agilent Technologies		Instrument	Run		6/18/2013 12:13:47 PM	(GMT --07:00) Pacific Standard Time	UC Davis	D8XSMGH1
Serial# : DE13701086		Instrument	Run		6/18/2013 12:13:47 PM	(GMT --07:00) Pacific Standard Time	UC Davis	D8XSMGH1
Firmware : C.01.069		Instrument	Run		6/18/2013 12:13:47 PM	(GMT --07:00) Pacific Standard Time	UC Davis	D8XSMGH1
Cartridge : Electrode		Instrument	Run		6/18/2013 12:13:47 PM	(GMT --07:00) Pacific Standard Time	UC Davis	D8XSMGH1