

Assay Class: High Sensitivity DNA Assay
Data Path: C:\...ents and Settings\Bioanalyzer\2013-06-21\2013-06-21_006.xad

Created: 6/21/2013 4:07:56 PM
Modified: 6/21/2013 4:52:21 PM

Electrophoresis File Run Summary

Instrument Information:

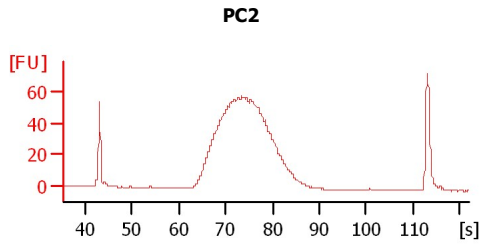
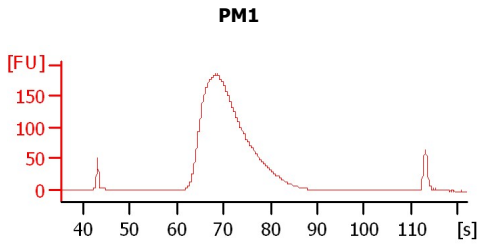
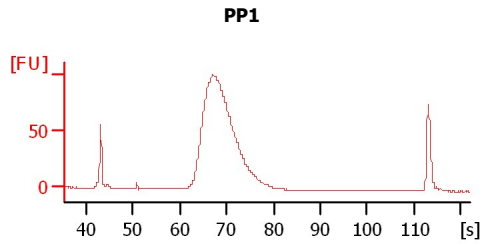
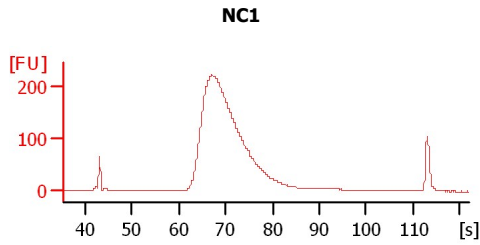
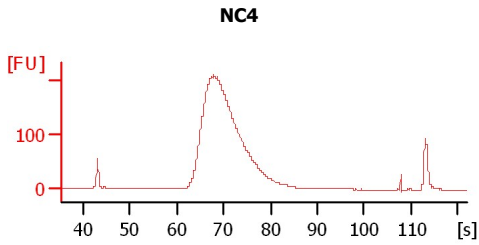
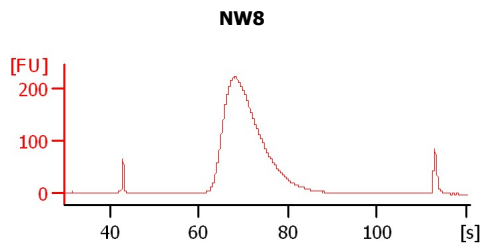
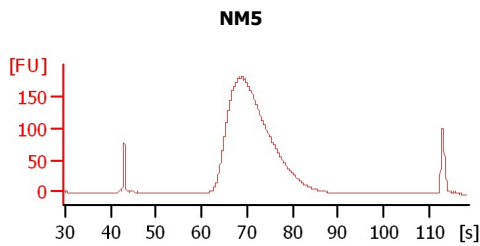
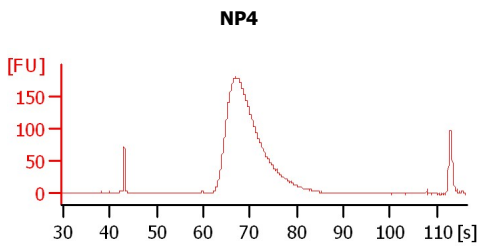
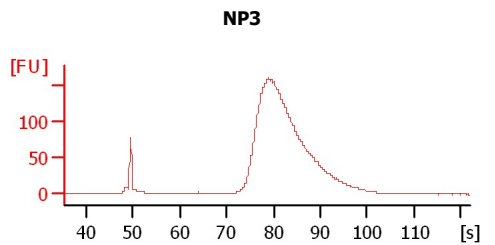
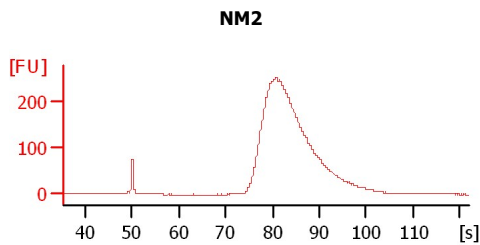
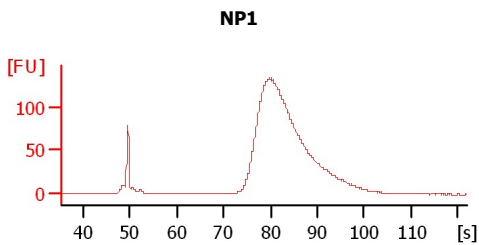
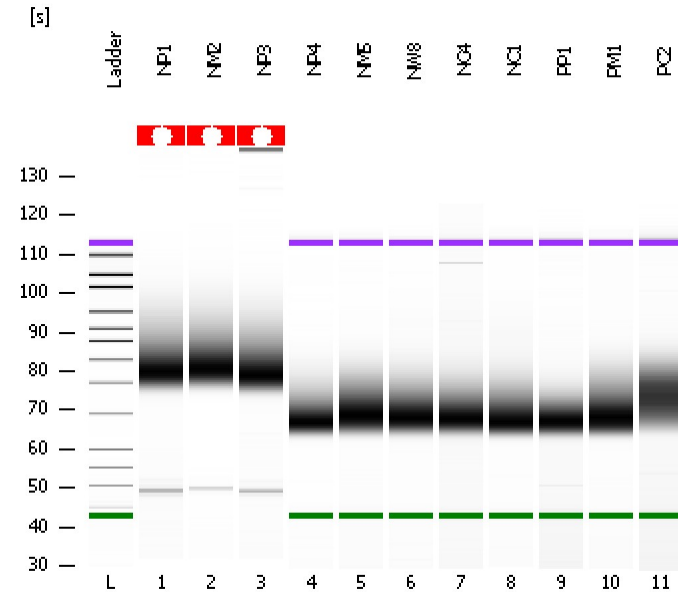
Instrument Name: DE13701086 Firmware: C.01.069
Serial#: DE13701086 Type: G2938B

Assay Information:

Assay Origin Path: C:\Program Files\Agilent\2100 bioanalyzer\2100 expert\assays\dsDNA\High Sensitivity DNA.xsy
Assay Class: High Sensitivity DNA Assay
Version: 1.03
Assay Comments: Copyright © 2003-2010 Agilent Technologies

Chip Information:

Chip Lot #:
Reagent Kit Lot #:
Chip Comments:



Assay Class: High Sensitivity DNA Assay
 Data Path: C:\...ents and Settings\Bioanalyzer\2013-06-21\2013-06-21_006.xad

Created: 6/21/2013 4:07:56 PM
 Modified: 6/21/2013 4:52:21 PM

Electrophoresis File Run Summary (Chip Summary)

Sample Name	Sample Comment	Rest. Digest	Status	Observation	Result Label	Result Color
NP1		<input type="checkbox"/>	✓			
NM2		<input type="checkbox"/>	✓			
NP3		<input type="checkbox"/>	✓			
NP4		<input type="checkbox"/>	✓			
NM5		<input type="checkbox"/>	✓			
NW8		<input type="checkbox"/>	✓			
NC4		<input type="checkbox"/>	✓			
NC1		<input type="checkbox"/>	✓			
PP1		<input type="checkbox"/>	✓			
PM1		<input type="checkbox"/>	✓			
PC2		<input type="checkbox"/>	✓			
Ladder		<input type="checkbox"/>	✓			

Chip Lot #

Reagent Kit Lot #

Chip Comments :

Assay Class: High Sensitivity DNA Assay
Data Path: C:\...ents and Settings\Bioanalyzer\2013-06-21\2013-06-21_006.xad

Created: 6/21/2013 4:07:56 PM
Modified: 6/21/2013 4:52:21 PM

Electrophoresis Assay Details

General Analysis Settings

Number of Available Sample and Ladder Wells (Max.) : 12
Minimum Visible Range [s] : 32
Maximum Visible Range [s] : 138
Start Analysis Time Range [s] : 33
End Analysis Time Range [s] : 137.5
Ladder Concentration [pg/μl] : 1950
Uses Standard Area for Ladder Fragments
Lower Marker Concentration [pg/μl] : 125
Upper Marker Concentration [pg/μl] : 75
Used Upper Marker for Quantitation
Standard Curve Fit is Point to Point
Show Data Aligned to Lower and Upper Marker

Integrator Settings

Integration Start Time [s] : 33.05
Integration End Time [s] : 137
Slope Threshold : 0.8
Height Threshold [FU] : 5
Area Threshold : 0.1
Width Threshold [s] : 0.6
Baseline Plateau [s] : 0.5

Filter Settings

Filter Width [s] : 0.5
Polynomial Order : 4

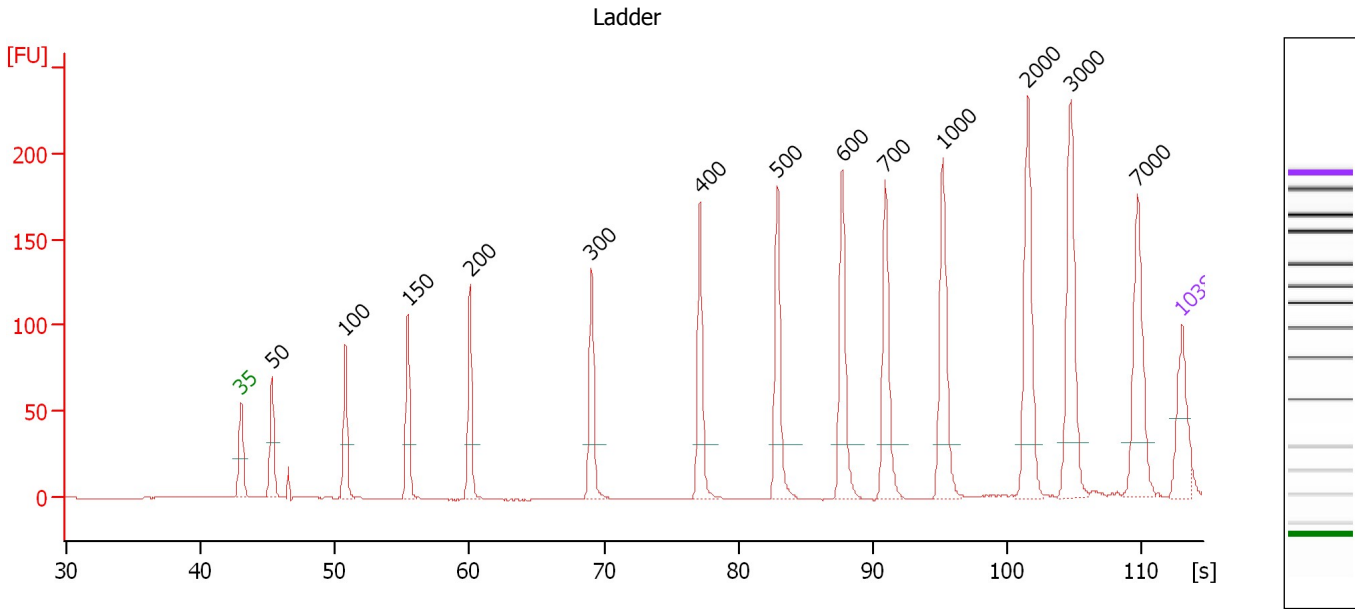
Ladder

Ladder Peak	Size	Area
1	35	160
2	50	210
3	100	208
4	150	221
5	200	242
6	300	270
7	400	305
8	500	306
9	600	336
10	700	321
11	1000	366
12	2000	413
13	3000	411
14	7000	400
15	10380	214

Assay Class: High Sensitivity DNA Assay
 Data Path: C:\...ents and Settings\Bioanalyzer\2013-06-21\2013-06-21_006.xad

Created: 6/21/2013 4:07:56 PM
 Modified: 6/21/2013 4:52:21 PM

Electropherogram Summary



Overall Results for Ladder

Noise: 0.1

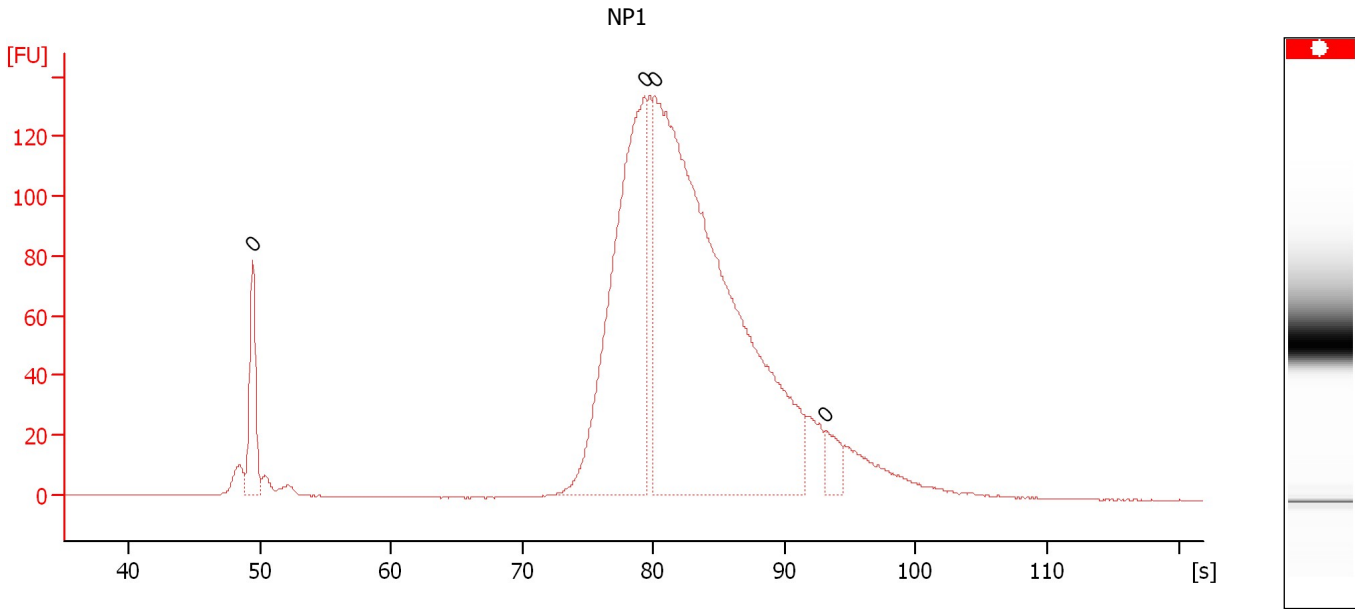
Peak table for Ladder

Peak	Size [bp]	Conc. [pg/μl]	Molarity [pmol/l]	Observations
1	35	125.00	5,411.3	Lower Marker
2	50	150.00	4,545.5	Ladder Peak
3	100	150.00	2,272.7	Ladder Peak
4	150	150.00	1,515.2	Ladder Peak
5	200	150.00	1,136.4	Ladder Peak
6	300	150.00	757.6	Ladder Peak
7	400	150.00	568.2	Ladder Peak
8	500	150.00	454.5	Ladder Peak
9	600	150.00	378.8	Ladder Peak
10	700	150.00	324.7	Ladder Peak
11	1,000	150.00	227.3	Ladder Peak
12	2,000	150.00	113.6	Ladder Peak
13	3,000	150.00	75.8	Ladder Peak
14	7,000	150.00	32.5	Ladder Peak
15	10,380	75.00	10.9	Upper Marker

Assay Class: High Sensitivity DNA Assay
Data Path: C:\...ents and Settings\Bioanalyzer\2013-06-21\2013-06-21_006.xad

Created: 6/21/2013 4:07:56 PM
Modified: 6/21/2013 4:52:21 PM

Electropherogram Summary Continued ...



Setpoint Deviations for sample 1 : NP1

Height Threshold [FU] : 20

Overall Results for sample 1 : NP1

Number of peaks found: 0 Noise: 0.2

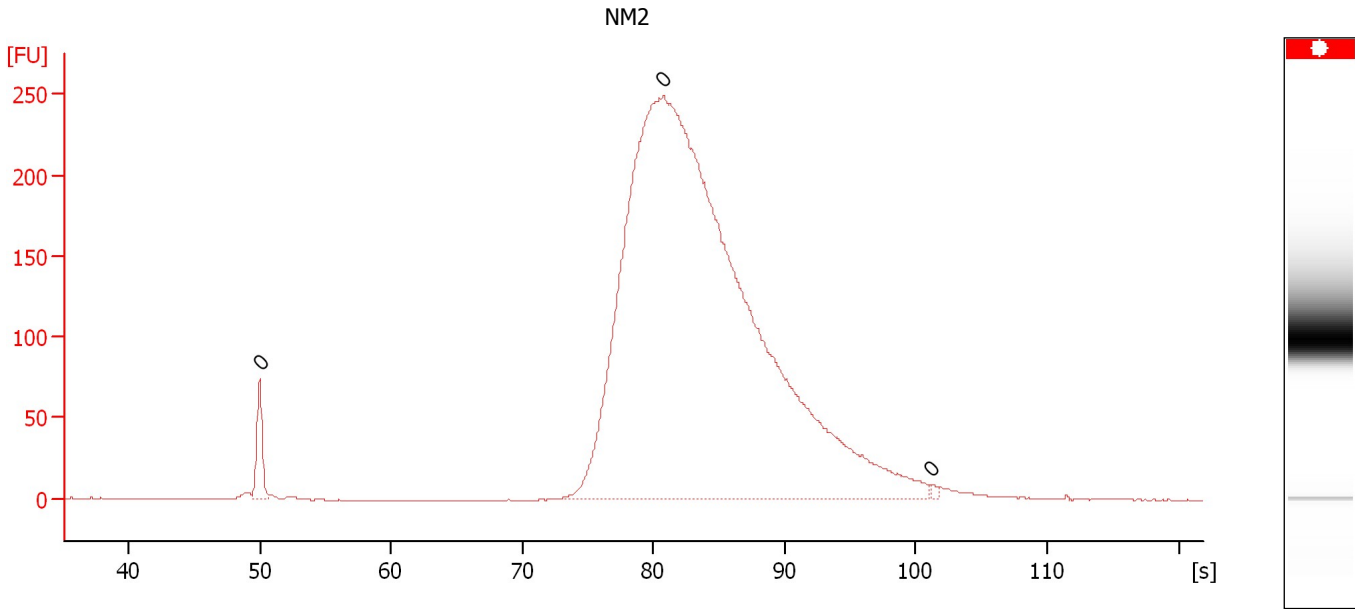
Peak table for sample 1 : NP1

Peak	Size [bp]	Conc. [pg/μl]	Molarity [pmol/l]	Observations
1	0	0.00	0.0	
2	0	0.00	0.0	
3	0	0.00	0.0	
4	0	0.00	0.0	

Assay Class: High Sensitivity DNA Assay
Data Path: C:\...ents and Settings\Bioanalyzer\2013-06-21\2013-06-21_006.xad

Created: 6/21/2013 4:07:56 PM
Modified: 6/21/2013 4:52:21 PM

Electropherogram Summary Continued ...



Overall Results for sample 2 : NM2

Number of peaks found: 0 Noise: 0.1

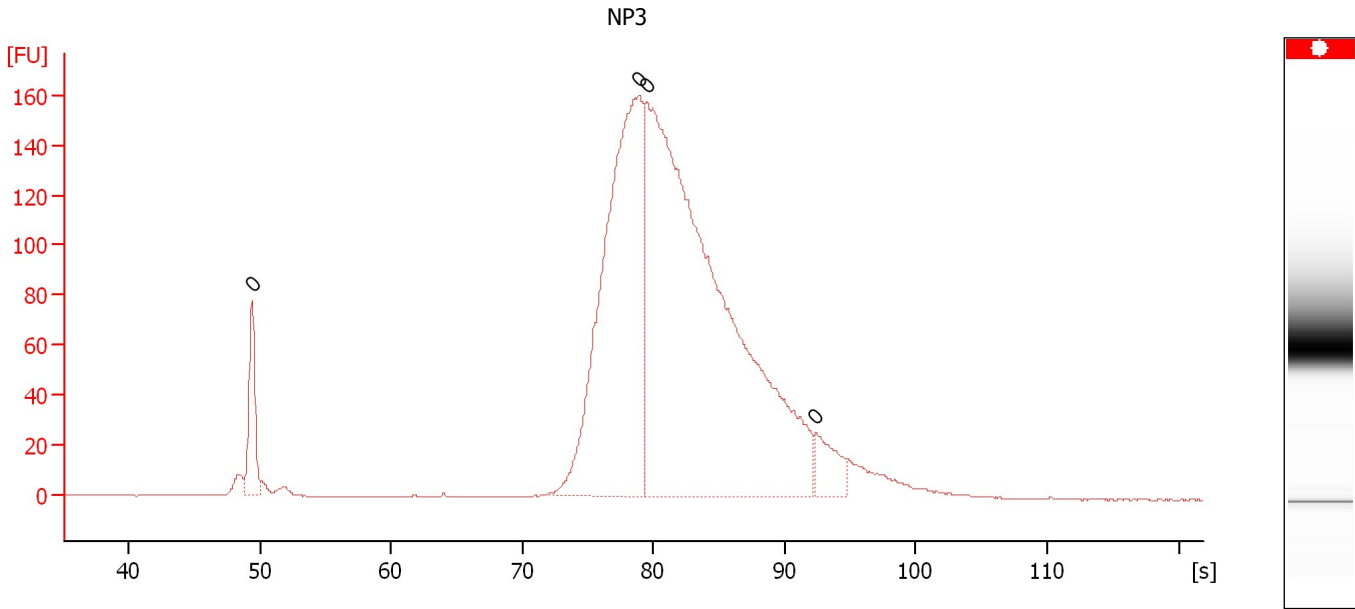
Peak table for sample 2 : NM2

Peak	Size [bp]	Conc. [pg/μl]	Molarity [pmol/l]	Observations
1	0	0.00	0.0	
2	0	0.00	0.0	
3	0	0.00	0.0	

Assay Class: High Sensitivity DNA Assay
Data Path: C:\...ents and Settings\Bioanalyzer\2013-06-21\2013-06-21_006.xad

Created: 6/21/2013 4:07:56 PM
Modified: 6/21/2013 4:52:21 PM

Electropherogram Summary Continued ...



Setpoint Deviations for sample 3 : NP3

Height Threshold [FU] : 20

Overall Results for sample 3 : NP3

Number of peaks found: 0 Noise: 0.2

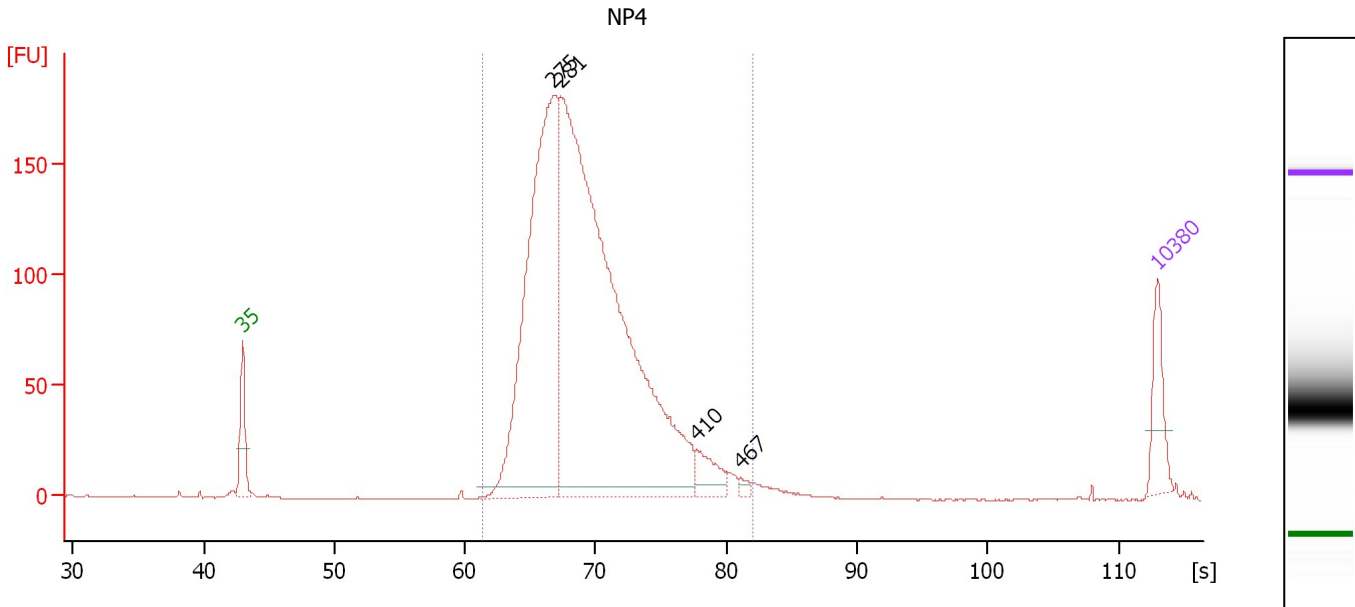
Peak table for sample 3 : NP3

Peak	Size [bp]	Conc. [pg/μl]	Molarity [pmol/l]	Observations
1	0	0.00	0.0	
2	0	0.00	0.0	
3	0	0.00	0.0	
4	0	0.00	0.0	

Assay Class: High Sensitivity DNA Assay
 Data Path: C:\...ents and Settings\Bioanalyzer\2013-06-21\2013-06-21_006.xad

Created: 6/21/2013 4:07:56 PM
 Modified: 6/21/2013 4:52:21 PM

Electropherogram Summary Continued ...



Overall Results for sample 4 : NP4

Number of peaks found: 4 Corr. Area 1: 2,192.0
 Noise: 0.2

Peak table for sample 4 : NP4

Peak	Size [bp]	Conc. [pg/μl]	Molarity [pmol/l]	Observations
1	35	125.00	5,411.3	Lower Marker
2	275	1,204.78	6,647.9	
3	281	2,178.80	11,751.2	
4	410	70.57	261.1	
5	467	11.28	36.6	
6	10,380	75.00	10.9	Upper Marker

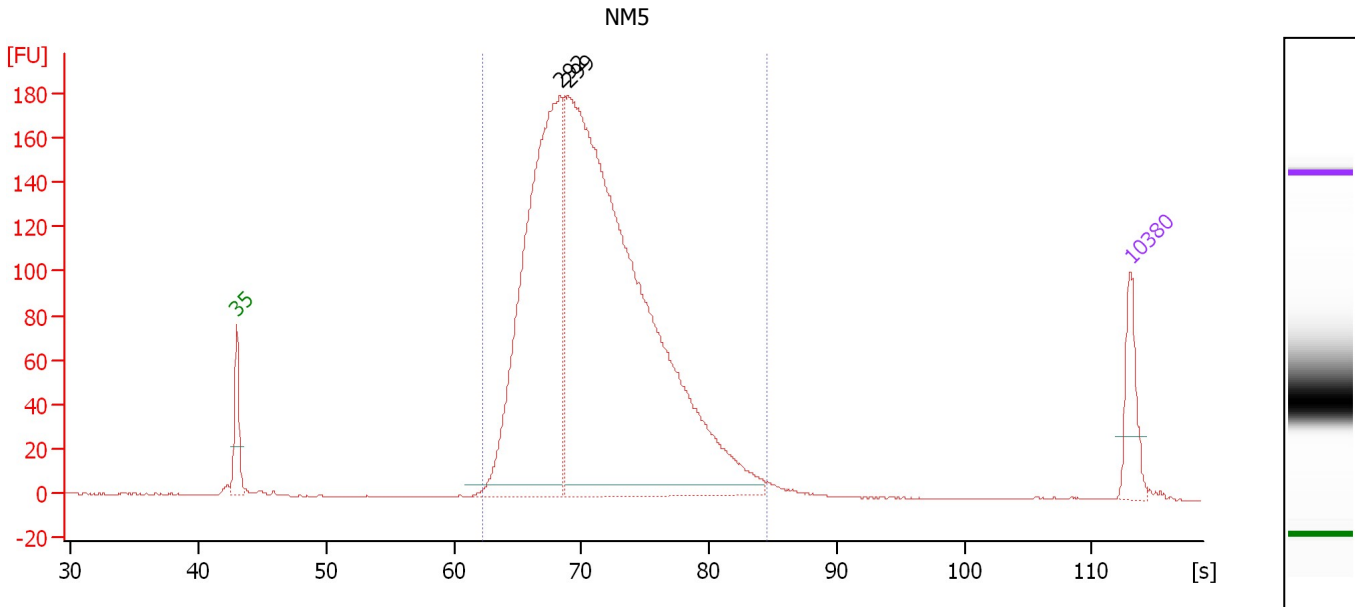
Region table for sample 4 : NP4

From [bp]	To [bp]	Average Size [bp]	Molarity [pmol/l]	Conc. [pg/μl]	Corr. Area	% of Total	Size distribution in CV [%]	Color
214	485	305	16,922.1	3,318.15	2,192.0	99	15.3	Blue

Assay Class: High Sensitivity DNA Assay
 Data Path: C:\...ents and Settings\Bioanalyzer\2013-06-21\2013-06-21_006.xad

Created: 6/21/2013 4:07:56 PM
 Modified: 6/21/2013 4:52:21 PM

Electropherogram Summary Continued ...



Overall Results for sample 5 : NM5

Number of peaks found: 2 Corr. Area 1: 2,761.5
 Noise: 0.2

Peak table for sample 5 : NM5

Peak	Size [bp]	Conc. [pg/μl]	Molarity [pmol/l]	Observations
1	35	125.00	5,411.3	Lower Marker
2	292	1,249.11	6,481.0	
3	299	2,404.21	12,183.9	
4	10,380	75.00	10.9	Upper Marker

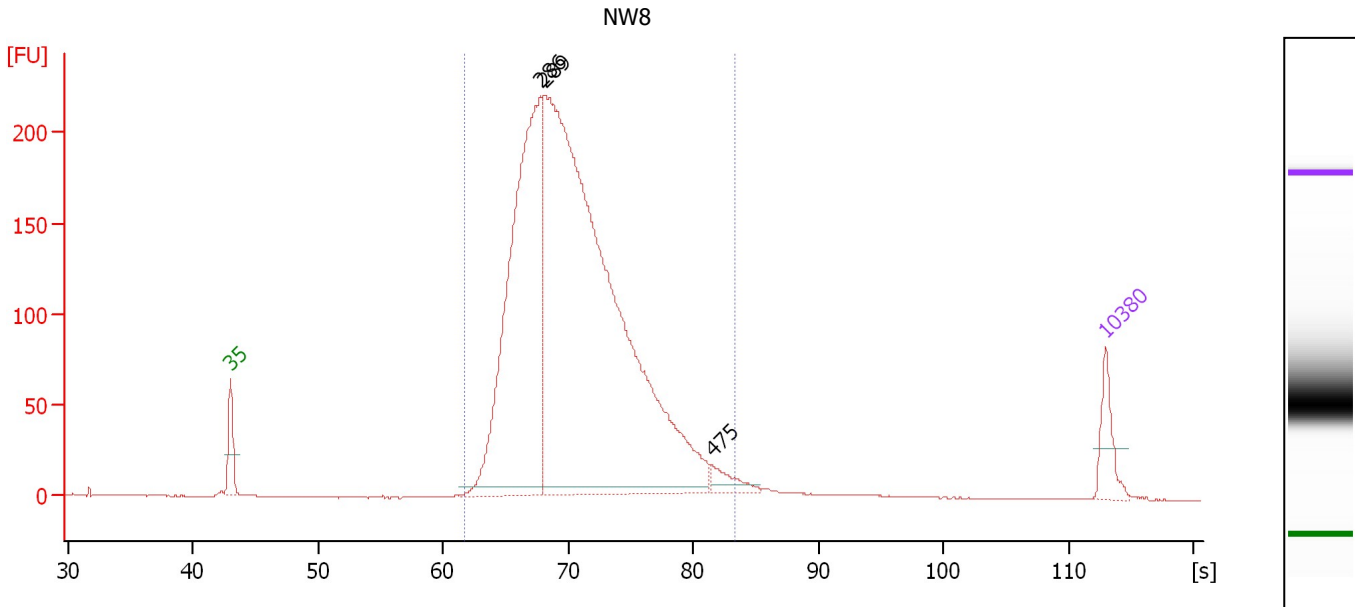
Region table for sample 5 : NM5

From [bp]	To [bp]	Average Size [bp]	Molarity [pmol/l]	Conc. [pg/μl]	Corr. Area	% of Total	Size distribution in CV [%]	Color
224	534	327	16,801.0	3,496.15	2,761.5	98	17.2	Blue

Assay Class: High Sensitivity DNA Assay
 Data Path: C:\...ents and Settings\Bioanalyzer\2013-06-21\2013-06-21_006.xad

Created: 6/21/2013 4:07:56 PM
 Modified: 6/21/2013 4:52:21 PM

Electropherogram Summary Continued ...



Overall Results for sample 6 : NW8

Number of peaks found: 3 Corr. Area 1: 3,085.0
 Noise: 0.2

Peak table for sample 6 : NW8

Peak	Size [bp]	Conc. [pg/μl]	Molarity [pmol/l]	Observations
1	35	125.00	5,411.3	Lower Marker
2	286	1,576.11	8,363.1	
3	289	3,348.40	17,534.6	
4	475	58.08	185.2	
5	10,380	75.00	10.9	Upper Marker

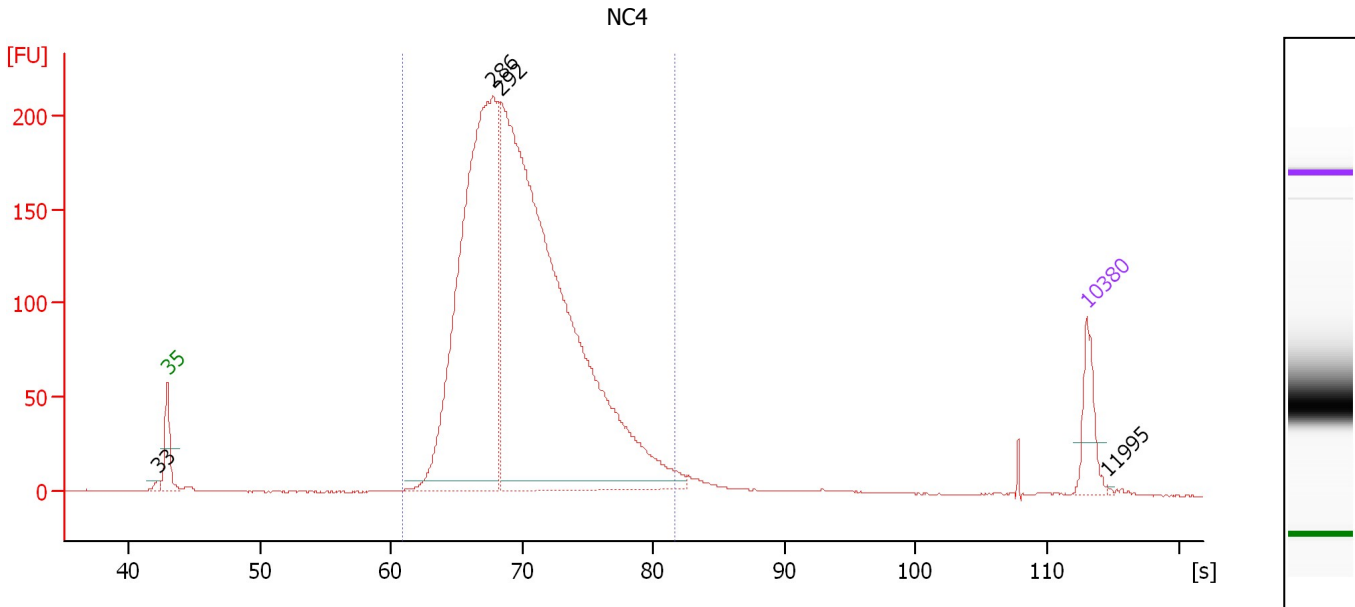
Region table for sample 6 : NW8

From [bp]	To [bp]	Average Size [bp]	Molarity [pmol/l]	Conc. [pg/μl]	Corr. Area	% of Total	Size distribution in CV [%]	Color
219	507	320	23,412.8	4,781.12	3,085.0	97	16.4	Blue

Assay Class: High Sensitivity DNA Assay
 Data Path: C:\...ents and Settings\Bioanalyzer\2013-06-21\2013-06-21_006.xad

Created: 6/21/2013 4:07:56 PM
 Modified: 6/21/2013 4:52:21 PM

Electropherogram Summary Continued ...



Overall Results for sample 7 : NC4

Number of peaks found: 4 Corr. Area 1: 2,752.4
 Noise: 0.2

Peak table for sample 7 : NC4

Peak	Size [bp]	Conc. [pg/μl]	Molarity [pmol/l]	Observations
1	33	0.00	0.0	
2	35	125.00	5,411.3	Lower Marker
3	286	1,538.03	8,158.8	
4	292	2,508.09	13,017.2	
5	10,380	75.00	10.9	Upper Marker
6	11,995	0.00	0.0	

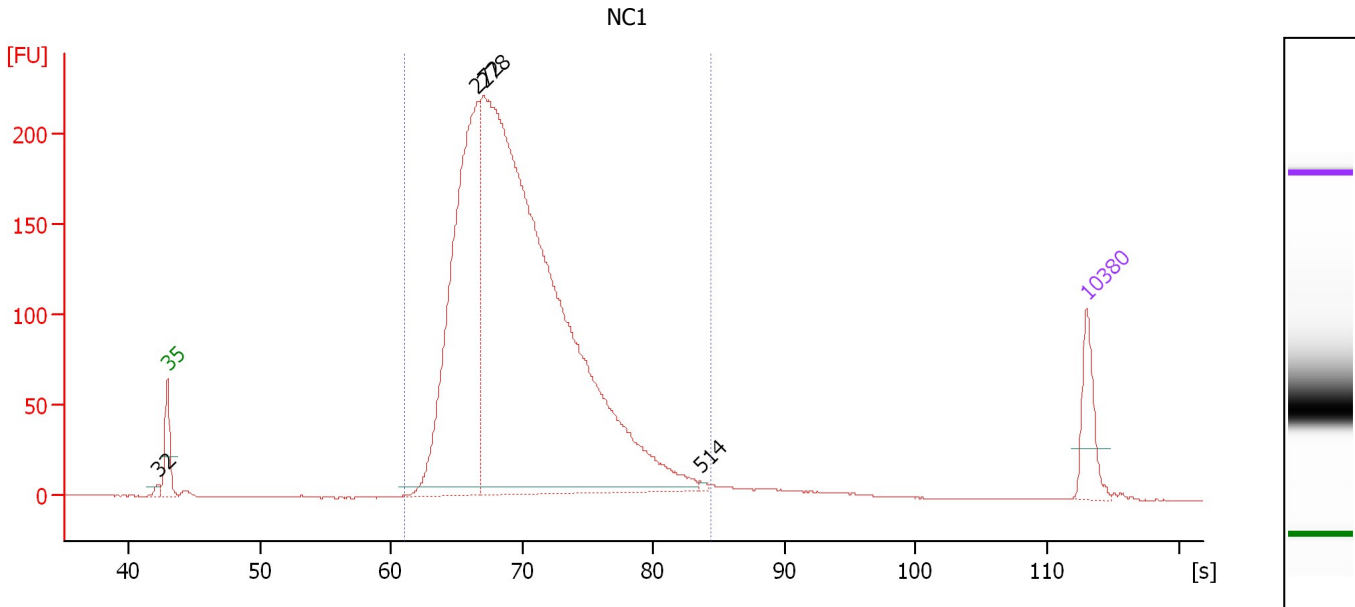
Region table for sample 7 : NC4

From [bp]	To [bp]	Average Size [bp]	Molarity [pmol/l]	Conc. [pg/μl]	Corr. Area	% of Total	Size distribution in CV [%]	Color
210	478	314	19,677.7	3,962.19	2,752.4	97	15.2	Blue

Assay Class: High Sensitivity DNA Assay
 Data Path: C:\...ents and Settings\Bioanalyzer\2013-06-21\2013-06-21_006.xad

Created: 6/21/2013 4:07:56 PM
 Modified: 6/21/2013 4:52:21 PM

Electropherogram Summary Continued ...



Overall Results for sample 8 : NC1

Number of peaks found: 4 Corr. Area 1: 3,001.5
 Noise: 0.2

Peak table for sample 8 : NC1

Peak	Size [bp]	Conc. [pg/μl]	Molarity [pmol/l]	Observations
1	32	0.00	0.0	
2	35	125.00	5,411.3	Lower Marker
3	272	1,033.44	5,755.2	
4	278	2,808.43	15,307.5	
5	514	4.62	13.6	
6	10,380	75.00	10.9	Upper Marker

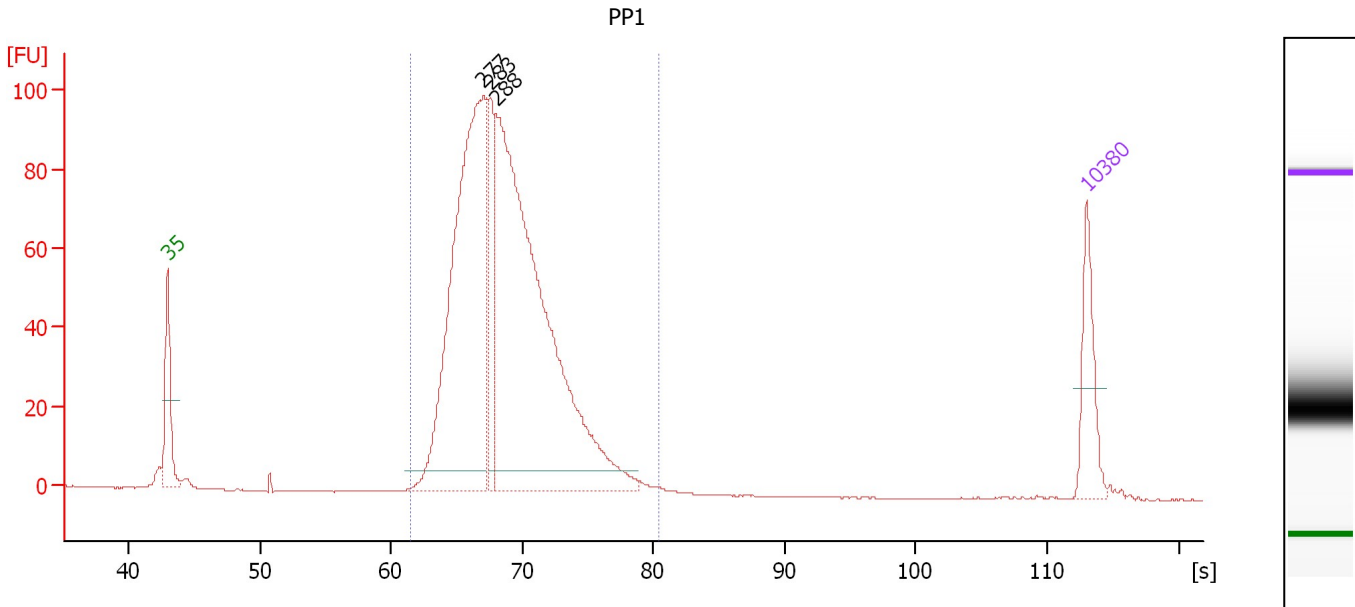
Region table for sample 8 : NC1

From [bp]	To [bp]	Average Size [bp]	Molarity [pmol/l]	Conc. [pg/μl]	Corr. Area	% of Total	Size distribution in CV [%]	Color
211	531	313	18,275.0	3,647.40	3,001.5	97	17.3	Blue

Assay Class: High Sensitivity DNA Assay
 Data Path: C:\...ents and Settings\Bioanalyzer\2013-06-21\2013-06-21_006.xad

Created: 6/21/2013 4:07:56 PM
 Modified: 6/21/2013 4:52:21 PM

Electropherogram Summary Continued ...



Overall Results for sample 9 : PP1

Number of peaks found: 3 Corr. Area 1: 1,113.0
 Noise: 0.1

Peak table for sample 9 : PP1

Peak	Size [bp]	Conc. [pg/μl]	Molarity [pmol/l]	Observations
1	35	125.00	5,411.3	Lower Marker
2	277	810.15	4,425.3	
3	283	157.52	842.3	
4	288	1,075.68	5,653.2	
5	10,380	75.00	10.9	Upper Marker

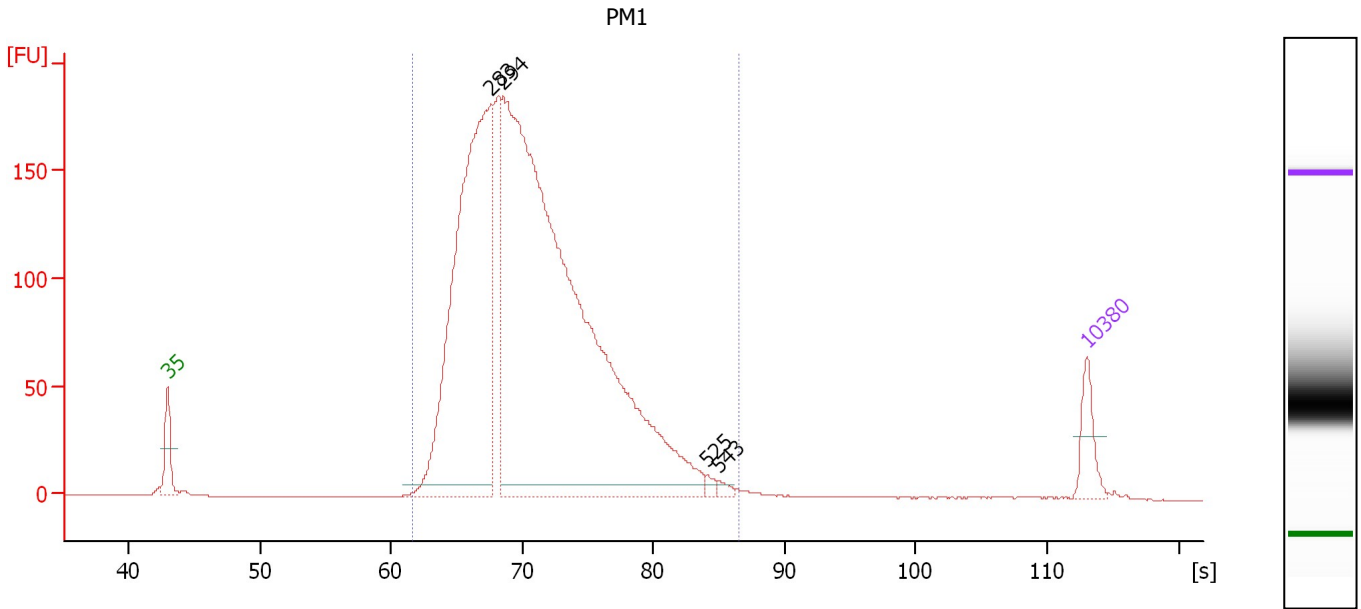
Region table for sample 9 : PP1

From [bp]	To [bp]	Average Size [bp]	Molarity [pmol/l]	Conc. [pg/μl]	Corr. Area	% of Total	Size distribution in CV [%]	Color
216	456	297	10,470.0	2,018.46	1,113.0	98	12.8	Blue

Assay Class: High Sensitivity DNA Assay
 Data Path: C:\...ents and Settings\Bioanalyzer\2013-06-21\2013-06-21_006.xad

Created: 6/21/2013 4:07:56 PM
 Modified: 6/21/2013 4:52:21 PM

Electropherogram Summary Continued ...



Overall Results for sample 10 : PM1

Number of peaks found: 4 Corr. Area 1: 2,799.3
 Noise: 0.2

Peak table for sample 10 : PM1

Peak	Size [bp]	Conc. [pg/μl]	Molarity [pmol/l]	Observations
1	35	125.00	5,411.3	Lower Marker
2	283	1,704.37	9,109.0	
3	294	3,522.59	18,182.4	
4	525	14.59	42.1	
5	543	13.61	38.0	
6	10,380	75.00	10.9	Upper Marker

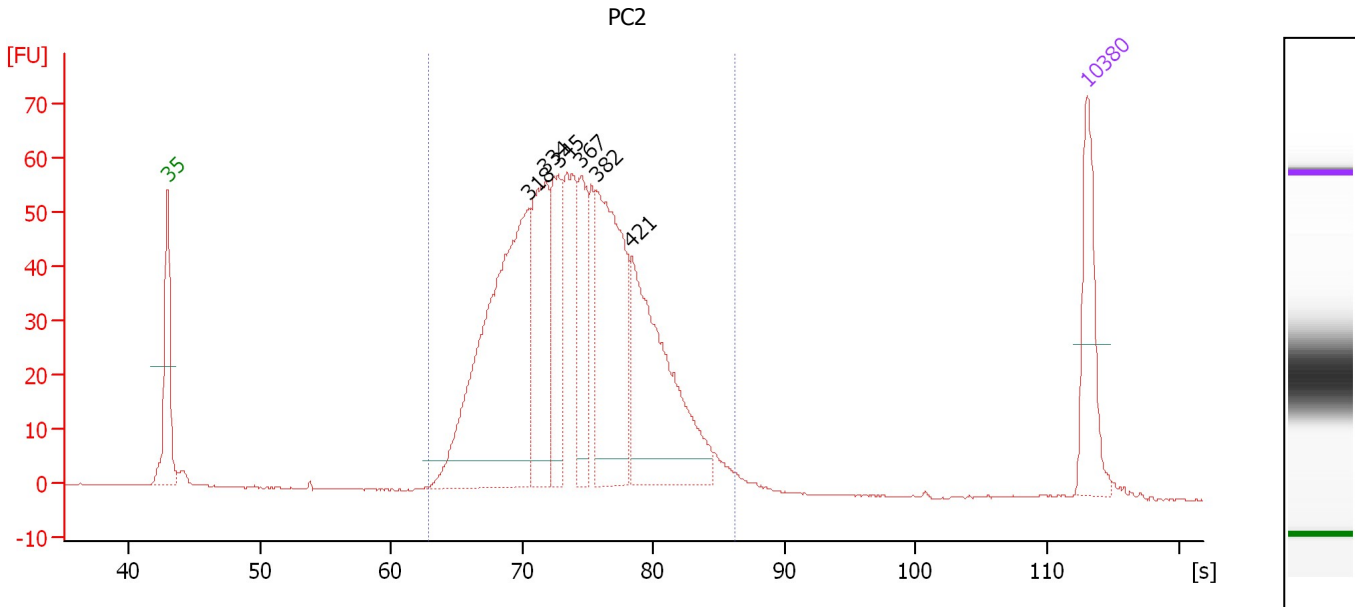
Region table for sample 10 : PM1

From [bp]	To [bp]	Average Size [bp]	Molarity [pmol/l]	Conc. [pg/μl]	Corr. Area	% of Total	Size distribution in CV [%]	Color
218	575	325	25,664.8	5,273.78	2,799.3	99	18.8	Blue

Assay Class: High Sensitivity DNA Assay
 Data Path: C:\...ents and Settings\Bioanalyzer\2013-06-21\2013-06-21_006.xad

Created: 6/21/2013 4:07:56 PM
 Modified: 6/21/2013 4:52:21 PM

Electropherogram Summary Continued ...



Overall Results for sample 11 : PC2

Number of peaks found: 6 Corr. Area 1: 1,048.9
 Noise: 0.1

Peak table for sample 11 : PC2

Peak	Size [bp]	Conc. [pg/μl]	Molarity [pmol/l]	Observations
1	35	125.00	5,411.3	Lower Marker
2	318	466.74	2,226.6	
3	334	179.81	816.7	
4	345	113.83	499.9	
5	367	96.19	396.8	
6	382	255.57	1,014.8	
7	421	264.57	953.1	
8	10,380	75.00	10.9	Upper Marker

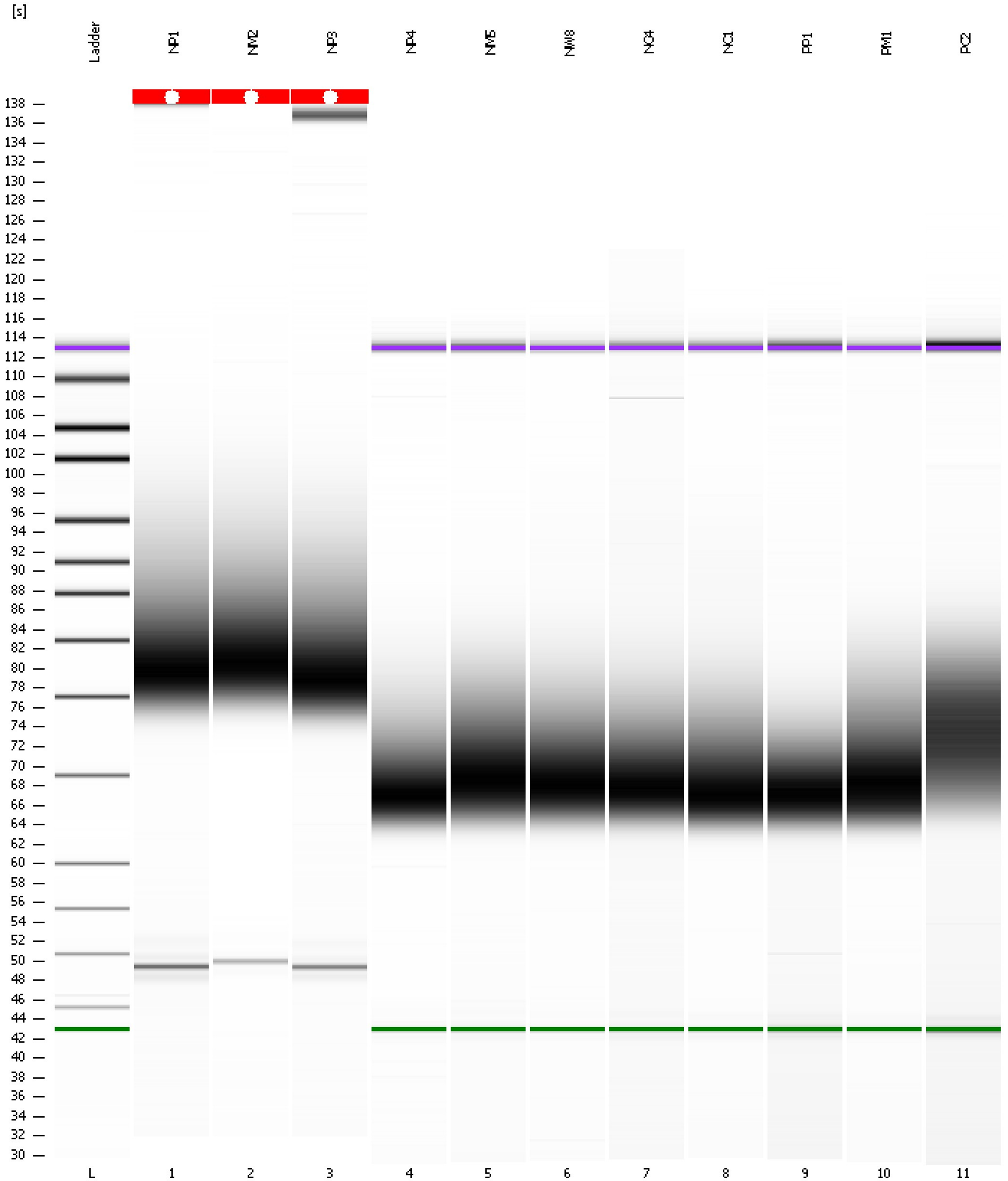
Region table for sample 11 : PC2

From [bp]	To [bp]	Average Size [bp]	Molarity [pmol/l]	Conc. [pg/μl]	Corr. Area	% of Total	Size distribution in CV [%]	Color
231	569	366	7,132.3	1,650.49	1,048.9	98	17.7	Blue

Assay Class: High Sensitivity DNA Assay
Data Path: C:\...ents and Settings\Bioanalyzer\2013-06-21\2013-06-21_006.xad

Created: 6/21/2013 4:07:56 PM
Modified: 6/21/2013 4:52:21 PM

Gel Image

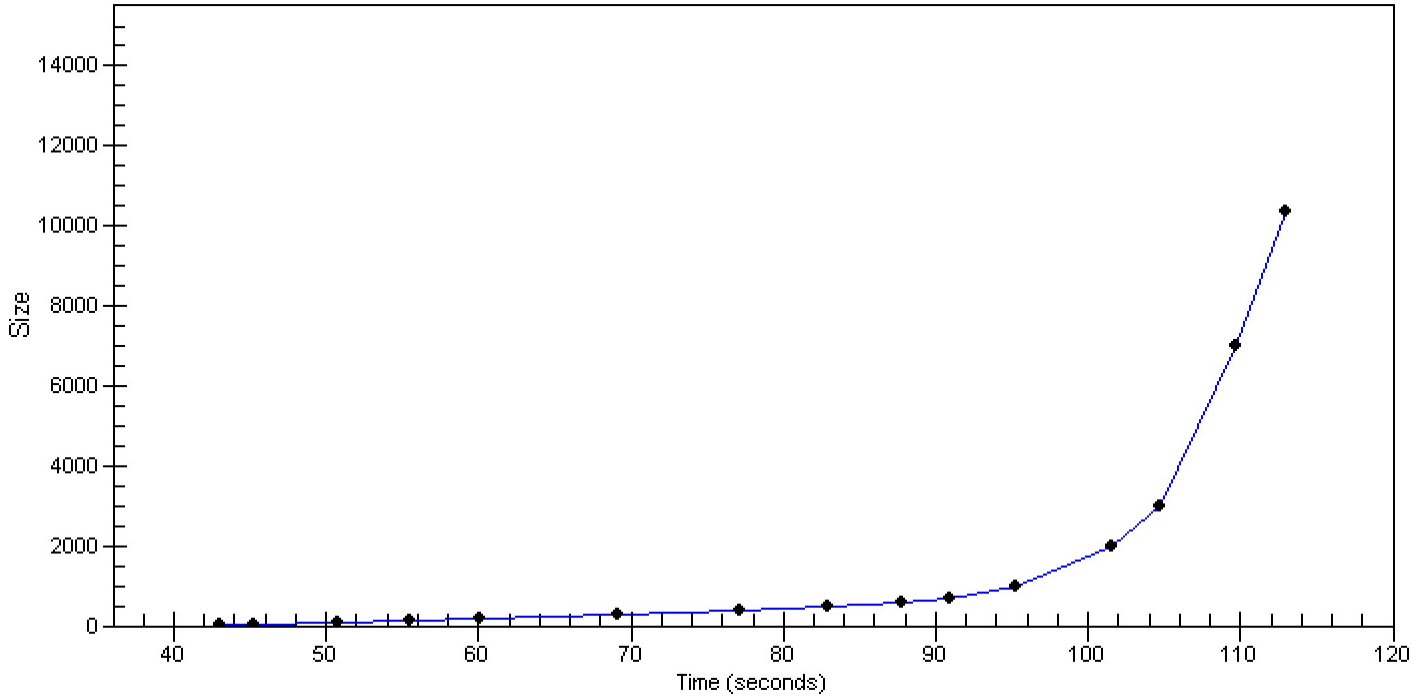


Assay Class: High Sensitivity DNA Assay
Data Path: C:\...ents and Settings\Bioanalyzer\2013-06-21\2013-06-21_006.xad

Created: 6/21/2013 4:07:56 PM
Modified: 6/21/2013 4:52:21 PM

Curves

Standard Curve



Assay Class: High Sensitivity DNA Assay
 Data Path: C:\...ents and Settings\Bioanalyzer\2013-06-21\2013-06-21_006.xad

Created: 6/21/2013 4:07:56 PM
 Modified: 6/21/2013 4:52:21 PM

Run Logbook

Description	Number	Source	Category	Sub Category	Time	Time Zone	User	Host
Run ended on port 1 (Number of wells acquired: 12)		Instrument	Run		6/21/2013 4:49:14 PM	(GMT --07:00) Pacific Standard Time	UC Davis	D8XSMGH1
Run started on port 1 (File: C:\Documents and Settings\Bioanalyzer\2013-06-21\2013-06-21_006.xad)		Instrument	Run		6/21/2013 4:08:01 PM	(GMT --07:00) Pacific Standard Time	UC Davis	D8XSMGH1
Product Number : G2938B		Instrument	Run		6/21/2013 4:08:01 PM	(GMT --07:00) Pacific Standard Time	UC Davis	D8XSMGH1
Name :		Instrument	Run		6/21/2013 4:08:01 PM	(GMT --07:00) Pacific Standard Time	UC Davis	D8XSMGH1
Vendor : Agilent Technologies		Instrument	Run		6/21/2013 4:08:01 PM	(GMT --07:00) Pacific Standard Time	UC Davis	D8XSMGH1
Serial# : DE13701086		Instrument	Run		6/21/2013 4:08:01 PM	(GMT --07:00) Pacific Standard Time	UC Davis	D8XSMGH1
Firmware : C.01.069		Instrument	Run		6/21/2013 4:08:01 PM	(GMT --07:00) Pacific Standard Time	UC Davis	D8XSMGH1
Cartridge : Electrode		Instrument	Run		6/21/2013 4:08:01 PM	(GMT --07:00) Pacific Standard Time	UC Davis	D8XSMGH1