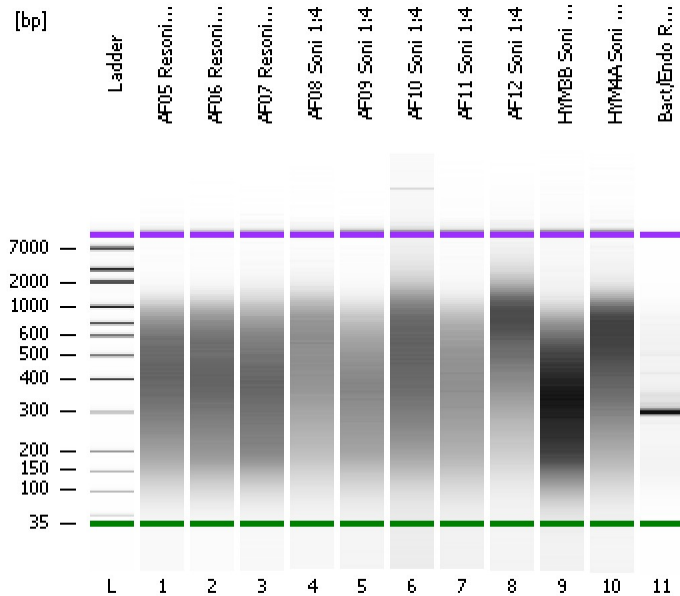


Assay Class: High Sensitivity DNA Assay  
Data Path: C:\...ents and Settings\Bioanalyzer\2013-06-24\2013-06-24\_003.xad

Created: 6/24/2013 11:57:03 AM  
Modified: 6/28/2013 1:21:08 PM

### Electrophoresis File Run Summary



#### Instrument Information:

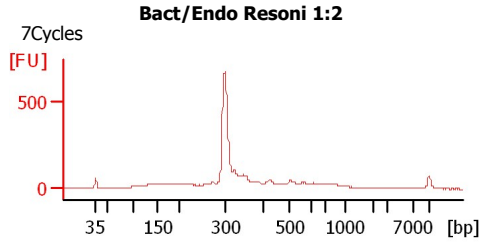
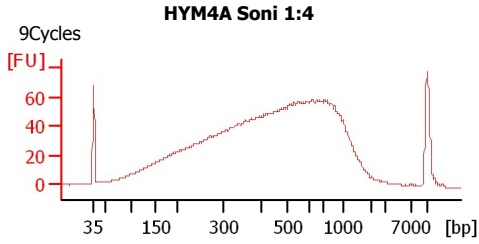
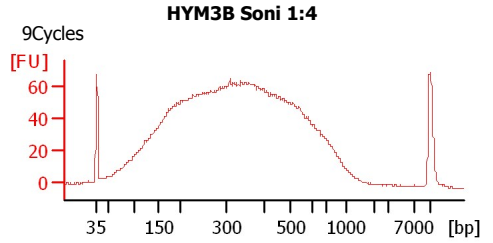
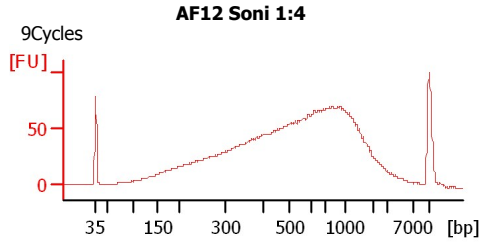
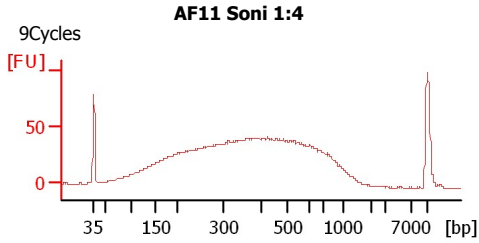
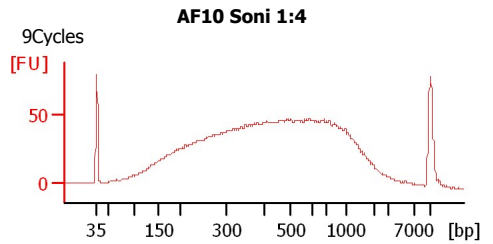
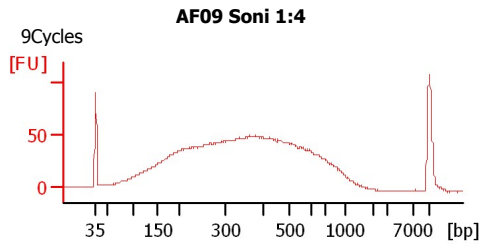
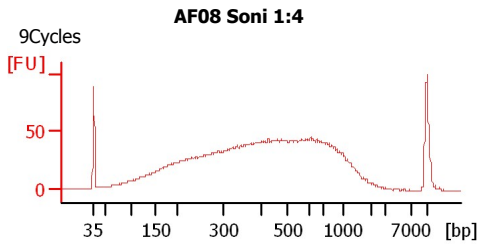
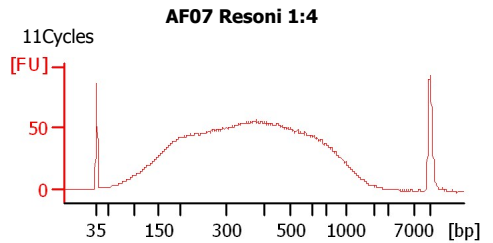
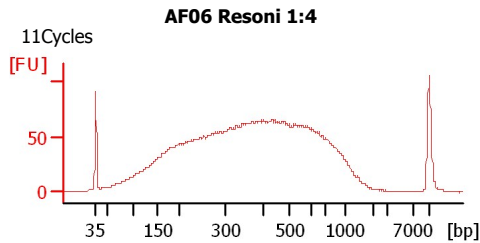
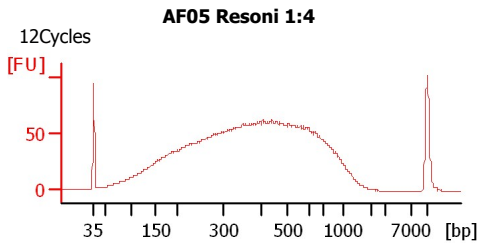
Instrument Name: DE13701086      Firmware: C.01.069  
Serial#: DE13701086      Type: G2938B

#### Assay Information:

Assay Origin Path: C:\Program Files\Agilent\2100 bioanalyzer\2100 expert\assays\dsDNA\High Sensitivity DNA.xsy  
Assay Class: High Sensitivity DNA Assay  
Version: 1.03  
Assay Comments: Copyright © 2003-2010 Agilent Technologies

#### Chip Information:

Chip Lot #:   
Reagent Kit Lot #:   
Chip Comments:



Assay Class: High Sensitivity DNA Assay  
Data Path: C:\...ents and Settings\Bioanalyzer\2013-06-24\2013-06-24\_003.xad

Created: 6/24/2013 11:57:03 AM  
Modified: 6/28/2013 1:21:08 PM

**Electrophoresis File Run Summary (Chip Summary)**

Sample Name	Sample Comment	Rest. Digest	Status	Observation	Result Label	Result Color
AF05 Resoni 1:4	12Cycles	<input type="checkbox"/>	✓			
AF06 Resoni 1:4	11Cycles	<input type="checkbox"/>	✓			
AF07 Resoni 1:4	11Cycles	<input type="checkbox"/>	✓			
AF08 Soni 1:4	9Cycles	<input type="checkbox"/>	✓			
AF09 Soni 1:4	9Cycles	<input type="checkbox"/>	✓			
AF10 Soni 1:4	9Cycles	<input type="checkbox"/>	✓			
AF11 Soni 1:4	9Cycles	<input type="checkbox"/>	✓			
AF12 Soni 1:4	9Cycles	<input type="checkbox"/>	✓			
HYM3B Soni 1:4	9Cycles	<input type="checkbox"/>	✓			
HYM4A Soni 1:4	9Cycles	<input type="checkbox"/>	✓			
Bact/Endo Resoni 1:2	7Cycles	<input type="checkbox"/>	✓			
Ladder		<input type="checkbox"/>	✓			

**Chip Lot #**

**Reagent Kit Lot #**

**Chip Comments :**

Assay Class: High Sensitivity DNA Assay  
Data Path: C:\...ents and Settings\Bioanalyzer\2013-06-24\2013-06-24\_003.xad

Created: 6/24/2013 11:57:03 AM  
Modified: 6/28/2013 1:21:08 PM

**Electrophoresis Assay Details**

**General Analysis Settings**

Number of Available Sample and Ladder Wells (Max.) : 12  
Minimum Visible Range [s] : 32  
Maximum Visible Range [s] : 138  
Start Analysis Time Range [s] : 33  
End Analysis Time Range [s] : 137.5  
Ladder Concentration [pg/μl] : 1950  
Uses Standard Area for Ladder Fragments  
Lower Marker Concentration [pg/μl] : 125  
Upper Marker Concentration [pg/μl] : 75  
Used Upper Marker for Quantitation  
Standard Curve Fit is Point to Point  
Show Data Aligned to Lower and Upper Marker

**Integrator Settings**

Integration Start Time [s] : 33.05  
Integration End Time [s] : 137  
Slope Threshold : 0.8  
Height Threshold [FU] : 5  
Area Threshold : 0.1  
Width Threshold [s] : 0.6  
Baseline Plateau [s] : 0.5

**Filter Settings**

Filter Width [s] : 0.5  
Polynomial Order : 4

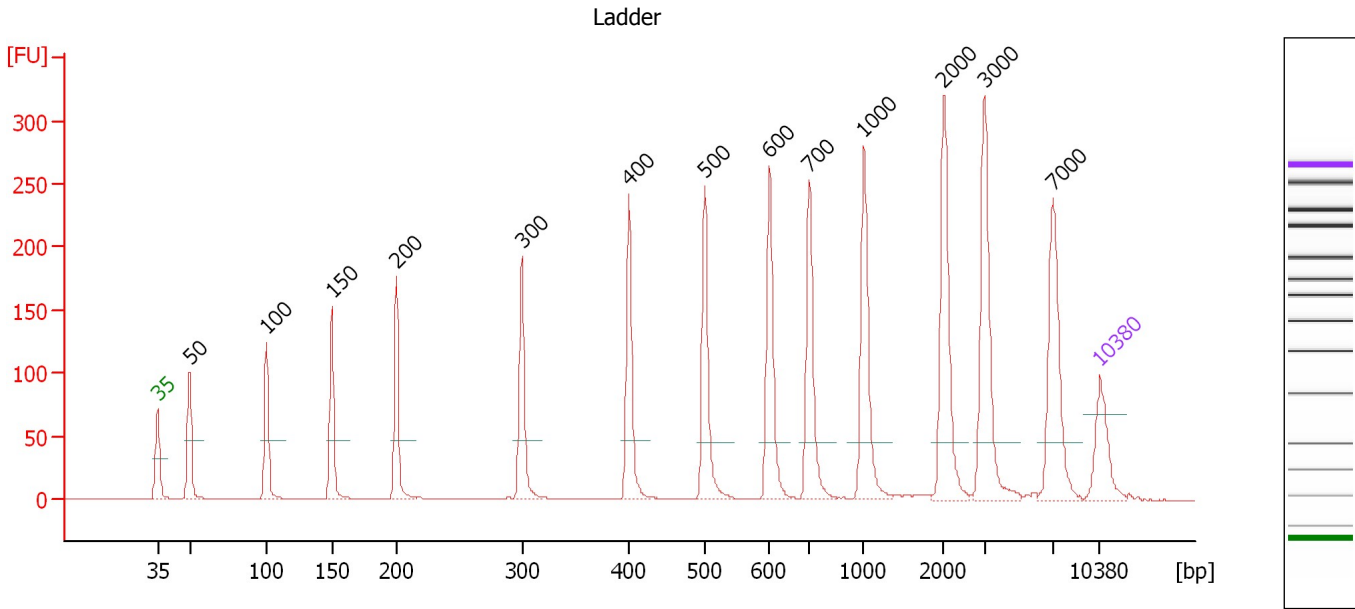
**Ladder**

Ladder Peak	Size	Area
1	35	160
2	50	210
3	100	208
4	150	221
5	200	242
6	300	270
7	400	305
8	500	306
9	600	336
10	700	321
11	1000	366
12	2000	413
13	3000	411
14	7000	400
15	10380	214

Assay Class: High Sensitivity DNA Assay  
 Data Path: C:\...ents and Settings\Bioanalyzer\2013-06-24\2013-06-24\_003.xad

Created: 6/24/2013 11:57:03 AM  
 Modified: 6/28/2013 1:21:08 PM

**Electropherogram Summary**



**Overall Results for Ladder**

Noise: 0.2

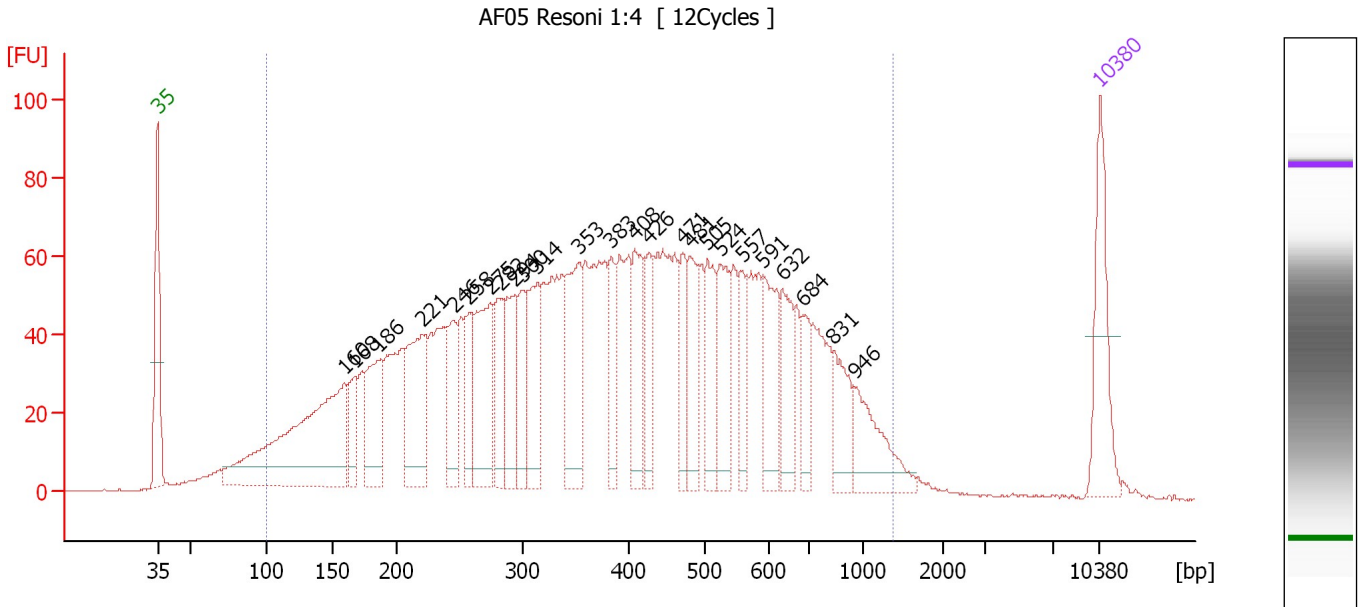
**Peak table for Ladder**

Peak	Size [bp]	Conc. [pg/μl]	Molarity [pmol/l]	Observations
1	35	125.00	5,411.3	Lower Marker
2	50	150.00	4,545.5	Ladder Peak
3	100	150.00	2,272.7	Ladder Peak
4	150	150.00	1,515.2	Ladder Peak
5	200	150.00	1,136.4	Ladder Peak
6	300	150.00	757.6	Ladder Peak
7	400	150.00	568.2	Ladder Peak
8	500	150.00	454.5	Ladder Peak
9	600	150.00	378.8	Ladder Peak
10	700	150.00	324.7	Ladder Peak
11	1,000	150.00	227.3	Ladder Peak
12	2,000	150.00	113.6	Ladder Peak
13	3,000	150.00	75.8	Ladder Peak
14	7,000	150.00	32.5	Ladder Peak
15	10,380	75.00	10.9	Upper Marker

Assay Class: High Sensitivity DNA Assay  
 Data Path: C:\...ents and Settings\Bioanalyzer\2013-06-24\2013-06-24\_003.xad

Created: 6/24/2013 11:57:03 AM  
 Modified: 6/28/2013 1:21:08 PM

**Electropherogram Summary Continued ...**



**Overall Results for sample 1 : AF05 Resoni 1:4**

Number of peaks found: 25                      Corr. Area 1: 2,903.3  
 Noise: 0.2

**Peak table for sample 1 : AF05 Resoni 1:4**

Peak	Size [bp]	Conc. [pg/μl]	Molarity [pmol/l]	Observations
1	35	125.00	5,411.3	Lower Marker
2	160	361.25	3,415.2	
3	168	47.00	423.5	
4	186	108.53	885.2	
5	221	151.44	1,036.7	
6	246	73.48	452.8	
7	258	58.52	343.8	
8	275	136.43	752.4	
9	282	72.52	389.0	
10	294	84.25	434.1	
11	300	72.43	365.4	
12	314	88.64	427.2	
13	353	121.67	522.9	
14	383	53.06	209.7	
15	408	76.32	283.7	
16	426	51.42	182.9	
17	471	49.26	158.4	
18	481	66.90	210.8	
19	505	70.79	212.6	
20	524	78.47	226.9	
21	557	44.39	120.7	
22	591	79.64	204.2	
23	632	63.78	152.8	
24	684	36.01	79.7	
25	831	55.63	101.4	
26	946	69.38	111.1	

Assay Class: High Sensitivity DNA Assay  
Data Path: C:\...ents and Settings\Bioanalyzer\2013-06-24\2013-06-24\_003.xad

Created: 6/24/2013 11:57:03 AM  
Modified: 6/28/2013 1:21:08 PM

**Electropherogram Summary Continued ...****... Peak table for sample 1 : AF05 Resoni 1:4**

Peak	Size [bp]	Conc. [pg/ $\mu$ l]	Molarity [pmol/l]	Observations
27	10,380	75.00	10.9	Upper Marker

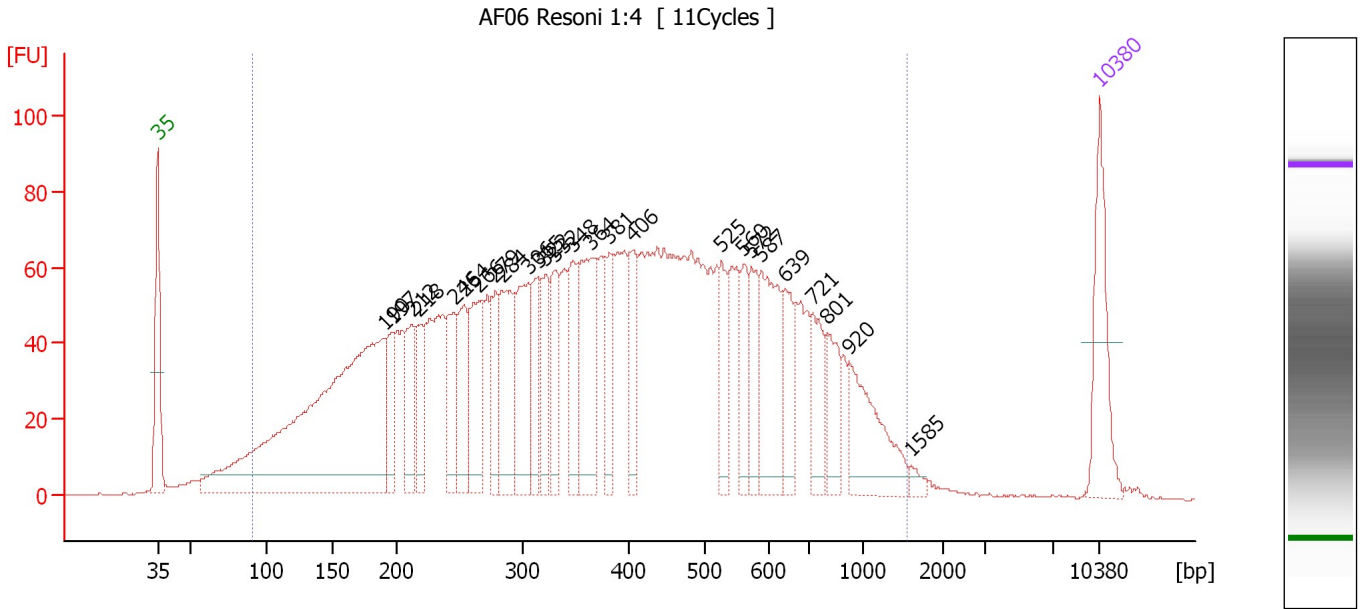
**Region table for sample 1 : AF05 Resoni 1:4**

From [bp]	To [bp]	Average Size [bp]	Molarity [pmol/l]	Conc. [pg/ $\mu$ l]	Corr. Area	% of Total	Size distribution in CV [%]	Color
99	1,367	422	18,767.1	3,555.74	2,903.3	96	49.9	

Assay Class: High Sensitivity DNA Assay  
 Data Path: C:\...ents and Settings\Bioanalyzer\2013-06-24\2013-06-24\_003.xad

Created: 6/24/2013 11:57:03 AM  
 Modified: 6/28/2013 1:21:08 PM

**Electropherogram Summary Continued ...**



**Overall Results for sample 2 : AF06 Resoni 1:4**

Number of peaks found: 26                      Corr. Area 1: 3,213.9  
 Noise: 0.2

**Peak table for sample 2 : AF06 Resoni 1:4**

Peak	Size [bp]	Conc. [pg/μl]	Molarity [pmol/l]	Observations
1	35	125.00	5,411.3	Lower Marker
2	190	707.24	5,632.7	
3	197	60.14	463.1	
4	212	73.99	528.3	
5	218	64.79	451.3	
6	246	77.86	480.3	
7	254	82.91	494.9	
8	266	115.00	655.1	
9	279	60.81	330.7	
10	284	116.63	621.3	
11	306	118.29	586.5	
12	315	59.85	287.7	
13	322	59.38	279.4	
14	332	68.25	311.9	
15	348	77.63	338.0	
16	364	143.15	595.3	
17	381	57.12	226.9	
18	406	63.66	237.8	
19	525	53.28	153.6	
20	560	50.52	136.7	
21	572	52.15	138.1	
22	587	112.40	290.1	
23	639	56.58	134.2	
24	721	58.11	122.1	
25	801	48.77	92.3	
26	920	97.46	160.4	

Assay Class: High Sensitivity DNA Assay  
 Data Path: C:\...ents and Settings\Bioanalyzer\2013-06-24\2013-06-24\_003.xad


Created: 6/24/2013 11:57:03 AM  
 Modified: 6/28/2013 1:21:08 PM

### Electropherogram Summary Continued ...

#### ... Peak table for sample 2 : AF06 Resoni 1:4

Peak	Size [bp]	Conc. [pg/μl]	Molarity [pmol/l]	Observations
27	1,585	7.19	6.9	
28	10,380	75.00	10.9	Upper Marker

#### Region table for sample 2 : AF06 Resoni 1:4

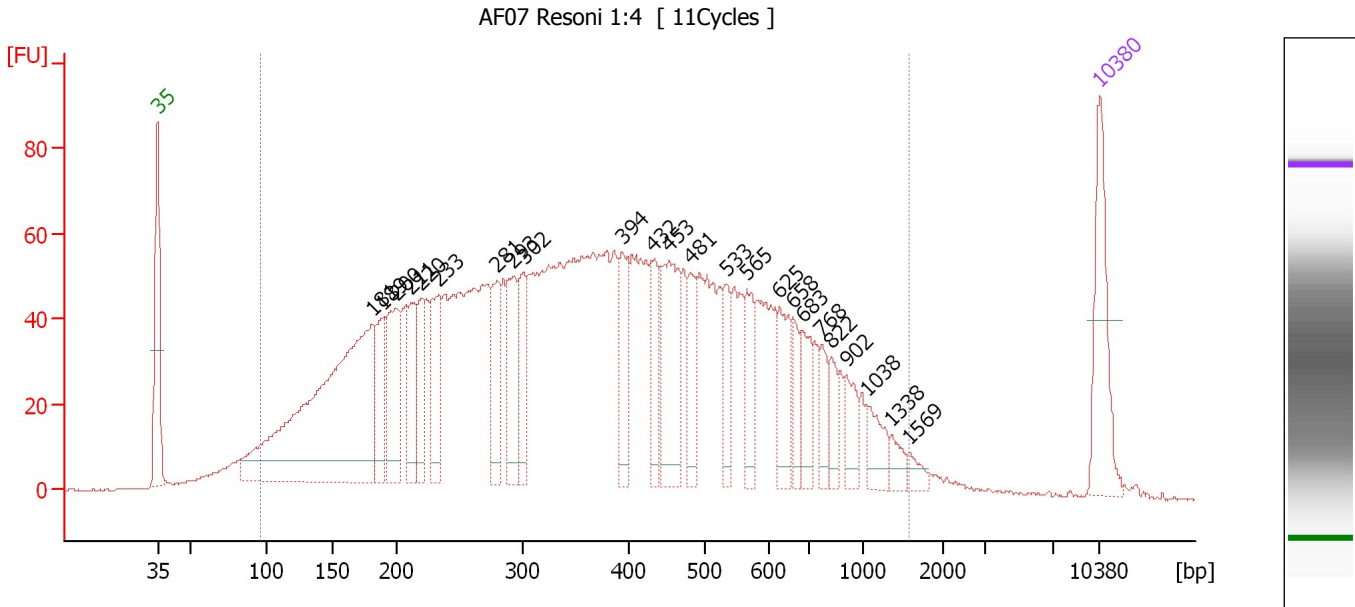
From [bp]	To [bp]	Average Size [bp]	Molarity [pmol/l]	Conc. [pg/μl]	Corr. Area	% of Total	Size distribution in CV [%]	Color
91	1,540	424	21,416.5	3,908.14	3,213.9	96	54.1	



Assay Class: High Sensitivity DNA Assay  
 Data Path: C:\...ents and Settings\Bioanalyzer\2013-06-24\2013-06-24\_003.xad

Created: 6/24/2013 11:57:03 AM  
 Modified: 6/28/2013 1:21:08 PM

**Electropherogram Summary Continued ...**



**Overall Results for sample 3 : AF07 Resoni 1:4**

Number of peaks found: 24                      Corr. Area 1: 2,800.1  
 Noise: 0.2

**Peak table for sample 3 : AF07 Resoni 1:4**

Peak	Size [bp]	Conc. [pg/µl]	Molarity [pmol/l]	Observations
1	35	125.00	5,411.3	Lower Marker
2	181	545.14	4,559.3	
3	189	74.39	597.2	
4	200	113.18	857.1	
5	211	66.93	479.8	
6	220	62.06	428.0	
7	233	88.93	577.1	
8	281	67.37	363.8	
9	293	84.57	436.7	
10	302	61.90	310.5	
11	394	66.82	257.2	
12	432	55.26	193.6	
13	453	114.15	382.0	
14	481	47.01	148.0	
15	533	41.53	118.1	
16	565	48.87	131.0	
17	625	56.09	135.9	
18	658	28.87	66.5	
19	683	43.26	95.9	
20	768	30.38	59.9	
21	822	23.79	43.9	
22	902	30.32	50.9	
23	1,038	29.35	42.8	
24	1,338	13.07	14.8	
25	1,569	10.32	10.0	
26	10,380	75.00	10.9	Upper Marker

Assay Class: High Sensitivity DNA Assay  
Data Path: C:\...ents and Settings\Bioanalyzer\2013-06-24\2013-06-24\_003.xad

Created: 6/24/2013 11:57:03 AM  
Modified: 6/28/2013 1:21:08 PM

**Electropherogram Summary Continued ...**

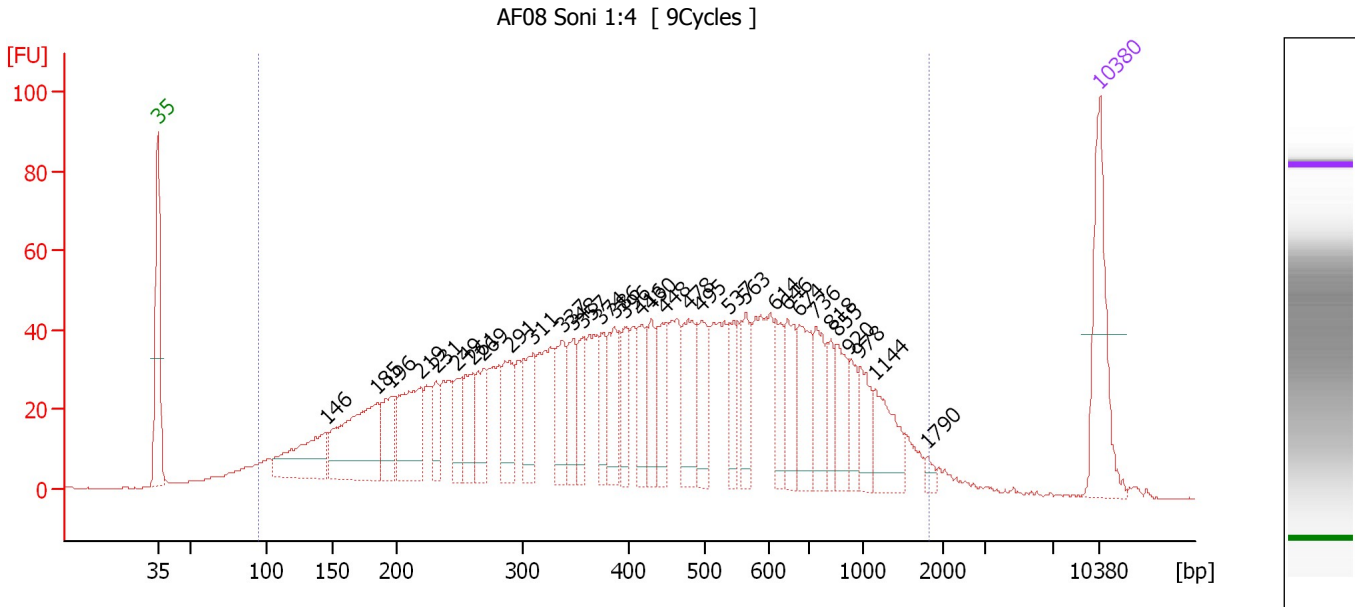
... Region table for sample 3 : AF07 Resoni 1:4

From [bp]	To [bp]	Average Size [bp]	Molarity [pmol/l]	Conc. [pg/μl]	Corr. Area	% of Total	Size distribution in CV [%]	Color
96	1,558	411	20,385.1	3,669.27	2,800.1	96	55.5	■

Assay Class: High Sensitivity DNA Assay  
 Data Path: C:\...ents and Settings\Bioanalyzer\2013-06-24\2013-06-24\_003.xad

Created: 6/24/2013 11:57:03 AM  
 Modified: 6/28/2013 1:21:08 PM

**Electropherogram Summary Continued ...**



**Overall Results for sample 4 : AF08 Soni 1:4**

Number of peaks found: 33      Corr. Area 1: 2,120.5  
 Noise: 0.3

**Peak table for sample 4 : AF08 Soni 1:4**

Peak	Size [bp]	Conc. [pg/μl]	Molarity [pmol/l]	Observations
1	35	125.00	5,411.3	Lower Marker
2	146	92.39	960.2	
3	185	150.77	1,234.5	
4	196	49.41	381.9	
5	219	96.02	663.6	
6	231	31.65	207.4	
7	249	34.34	209.3	
8	261	46.91	272.4	
9	269	47.84	269.5	
10	291	51.59	268.8	
11	311	43.88	213.9	
12	337	50.89	228.5	
13	348	42.63	185.7	
14	357	34.69	147.2	
15	374	34.65	140.4	
16	386	47.51	186.4	
17	396	34.22	130.9	
18	416	39.49	143.7	
19	430	36.83	129.9	
20	448	49.40	166.9	
21	478	62.09	196.8	
22	495	48.29	147.7	
23	537	33.69	95.1	
24	563	33.22	89.5	
25	614	33.17	81.9	
26	646	44.00	103.3	

Assay Class: High Sensitivity DNA Assay  
 Data Path: C:\...ents and Settings\Bioanalyzer\2013-06-24\2013-06-24\_003.xad


Created: 6/24/2013 11:57:03 AM  
 Modified: 6/28/2013 1:21:08 PM

### Electropherogram Summary Continued ...

#### ... Peak table for sample 4 : AF08 Soni 1:4

Peak	Size [bp]	Conc. [pg/μl]	Molarity [pmol/l]	Observations
27	674	53.77	120.9	
28	736	44.88	92.4	
29	818	25.85	47.9	
30	855	35.88	63.6	
31	920	23.90	39.4	
32	978	28.66	44.4	
33	1,144	43.96	58.2	
34	1,790	5.74	4.9	
35	10,380	75.00	10.9	Upper Marker

#### Region table for sample 4 : AF08 Soni 1:4

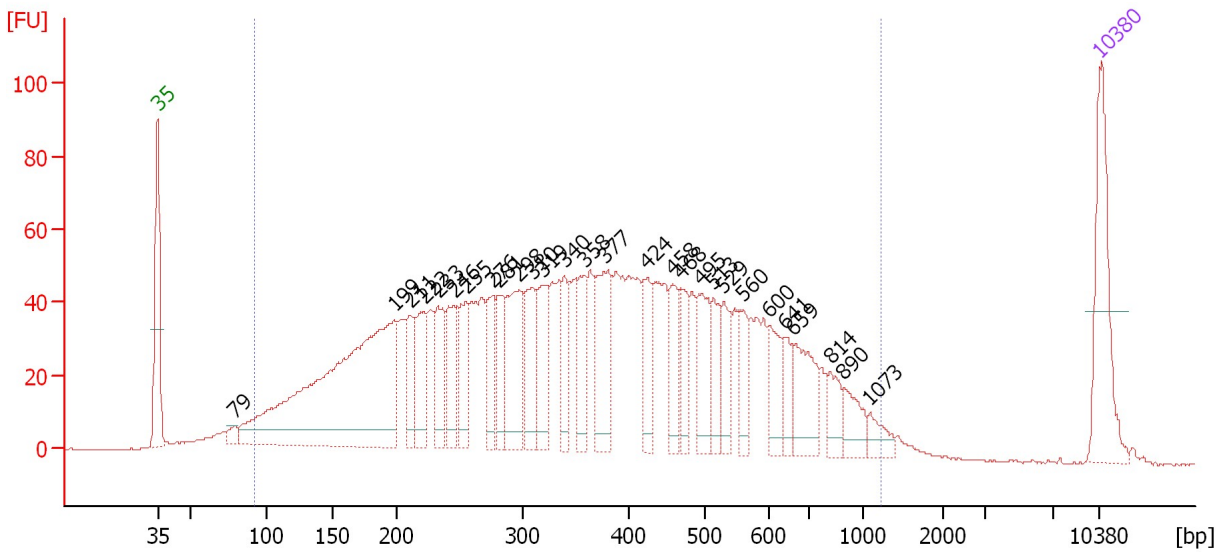
From [bp]	To [bp]	Average Size [bp]	Molarity [pmol/l]	Conc. [pg/μl]	Corr. Area	% of Total	Size distribution in CV [%]	Color
94	1,805	486	12,209.5	2,436.25	2,120.5	96	59.9	

Assay Class: High Sensitivity DNA Assay  
 Data Path: C:\...ents and Settings\Bioanalyzer\2013-06-24\2013-06-24\_003.xad

Created: 6/24/2013 11:57:03 AM  
 Modified: 6/28/2013 1:21:08 PM

**Electropherogram Summary Continued ...**

AF09 Soni 1:4 [ 9Cycles ]



**Overall Results for sample 5 : AF09 Soni 1:4**

Number of peaks found: 28                      Corr. Area 1: 2,341.8  
 Noise: 0.2

**Peak table for sample 5 : AF09 Soni 1:4**

Peak	Size [bp]	Conc. [pg/μl]	Molarity [pmol/l]	Observations
1	35	125.00	5,411.3	Lower Marker
2	79	10.43	199.8	
3	199	458.33	3,497.1	
4	211	43.31	311.6	
5	222	59.65	407.7	
6	233	56.91	369.6	
7	246	59.26	365.1	
8	255	55.67	330.2	
9	276	45.74	251.0	
10	281	45.82	246.9	
11	298	92.90	471.9	
12	310	60.66	296.7	
13	319	57.51	273.5	
14	340	47.65	212.5	
15	358	46.30	196.0	
16	377	78.46	315.5	
17	424	41.08	146.9	
18	458	38.53	127.5	
19	468	34.92	113.1	
20	495	51.91	158.8	
21	513	33.51	98.9	
22	529	33.73	96.7	
23	560	27.07	73.3	
24	600	34.97	88.4	
25	641	21.02	49.7	
26	659	57.11	131.4	

Assay Class: High Sensitivity DNA Assay  
 Data Path: C:\...ents and Settings\Bioanalyzer\2013-06-24\2013-06-24\_003.xad

Created: 6/24/2013 11:57:03 AM  
 Modified: 6/28/2013 1:21:08 PM

### Electropherogram Summary Continued ...

#### ... Peak table for sample 5 : AF09 Soni 1:4

Peak	Size [bp]	Conc. [pg/μl]	Molarity [pmol/l]	Observations
27	814	22.86	42.5	
28	890	26.07	44.4	
29	1,073	15.37	21.7	
30	10,380	75.00	10.9	Upper Marker

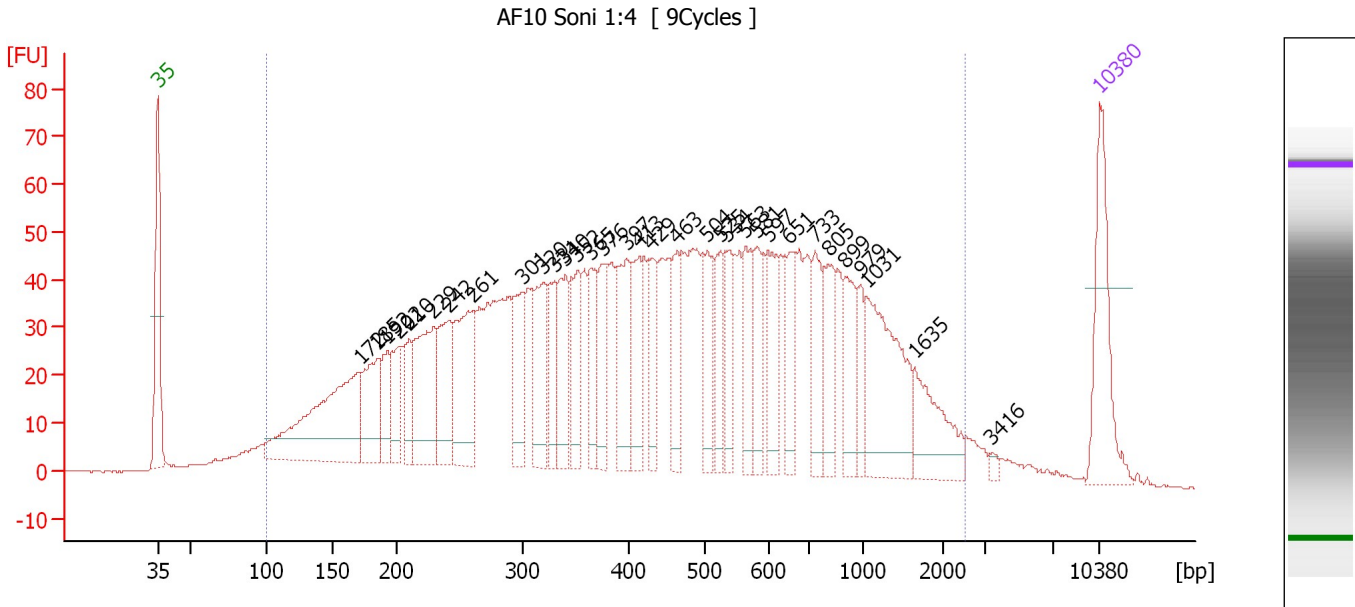
#### Region table for sample 5 : AF09 Soni 1:4

From [bp]	To [bp]	Average Size [bp]	Molarity [pmol/l]	Conc. [pg/μl]	Corr. Area	% of Total	Size distribution in CV [%]	Color
92	1,210	388	14,069.8	2,486.45	2,341.8	96	48.5	

Assay Class: High Sensitivity DNA Assay  
 Data Path: C:\...ents and Settings\Bioanalyzer\2013-06-24\2013-06-24\_003.xad

Created: 6/24/2013 11:57:03 AM  
 Modified: 6/28/2013 1:21:08 PM

**Electropherogram Summary Continued ...**



**Overall Results for sample 6 : AF10 Soni 1:4**

Number of peaks found: 33                      Corr. Area 1: 2,422.6  
 Noise: 0.2

**Peak table for sample 6 : AF10 Soni 1:4**

Peak	Size [bp]	Conc. [pg/μl]	Molarity [pmol/l]	Observations
1	35	125.00	5,411.3	Lower Marker
2	172	232.44	2,049.4	
3	185	83.12	680.6	
4	192	45.06	354.9	
5	202	49.00	367.2	
6	210	44.61	322.2	
7	229	120.41	796.4	
8	242	81.44	509.4	
9	261	120.19	699.0	
10	301	64.60	325.6	
11	320	75.62	357.8	
12	331	50.09	229.4	
13	340	67.98	302.7	
14	352	64.13	276.0	
15	365	49.89	207.0	
16	376	56.85	229.2	
17	397	82.39	314.4	
18	413	62.07	227.9	
19	429	47.78	168.6	
20	463	47.77	156.4	
21	504	56.57	170.2	
22	525	45.05	130.0	
23	534	44.95	127.5	
24	563	52.82	142.1	
25	581	48.51	126.5	
26	597	52.35	132.8	

Assay Class: High Sensitivity DNA Assay  
 Data Path: C:\...ents and Settings\Bioanalyzer\2013-06-24\2013-06-24\_003.xad

Created: 6/24/2013 11:57:03 AM  
 Modified: 6/28/2013 1:21:08 PM

### Electropherogram Summary Continued ...

#### ... Peak table for sample 6 : AF10 Soni 1:4

Peak	Size [bp]	Conc. [pg/μl]	Molarity [pmol/l]	Observations
27	651	40.96	95.4	
28	733	50.57	104.6	
29	805	49.77	93.6	
30	899	48.61	81.9	
31	979	27.44	42.5	
32	1,031	121.55	178.6	
33	1,635	59.29	54.9	
34	3,416	4.29	1.9	
35	10,380	75.00	10.9	Upper Marker

#### Region table for sample 6 : AF10 Soni 1:4

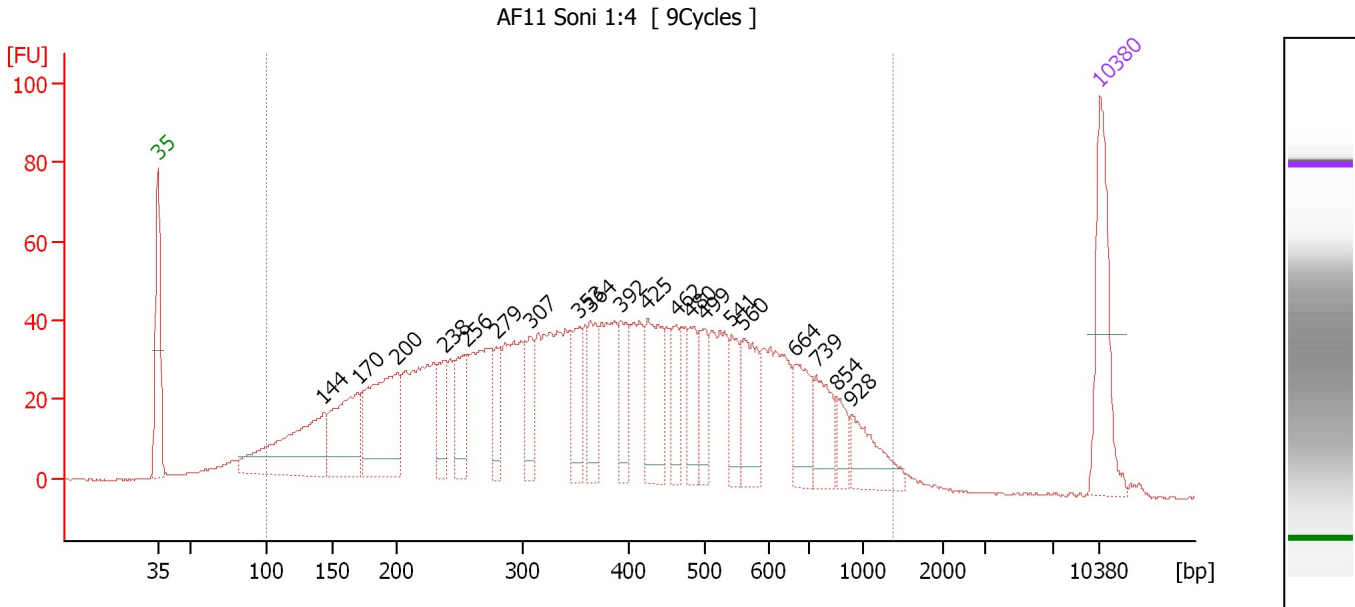
From [bp]	To [bp]	Average Size [bp]	Molarity [pmol/l]	Conc. [pg/μl]	Corr. Area	% of Total	Size distribution in CV [%]	Color
100	2,548	546	15,506.4	3,235.17	2,422.6	96	72.1	



Assay Class: High Sensitivity DNA Assay  
 Data Path: C:\...ents and Settings\Bioanalyzer\2013-06-24\2013-06-24\_003.xad

Created: 6/24/2013 11:57:03 AM  
 Modified: 6/28/2013 1:21:08 PM

**Electropherogram Summary Continued ...**



**Overall Results for sample 7 : AF11 Soni 1:4**

Number of peaks found: 20                      Corr. Area 1: 1,992.3  
 Noise: 0.2

**Peak table for sample 7 : AF11 Soni 1:4**

Peak	Size [bp]	Conc. [pg/µl]	Molarity [pmol/l]	Observations
1	35	125.00	5,411.3	Lower Marker
2	144	166.91	1,759.3	
3	170	115.57	1,027.8	
4	200	155.42	1,174.7	
5	238	43.05	274.3	
6	256	57.31	339.5	
7	279	37.94	205.9	
8	307	41.02	202.2	
9	353	53.90	231.1	
10	364	54.26	226.1	
11	392	46.19	178.4	
12	425	85.63	305.6	
13	462	35.19	115.4	
14	480	41.68	131.5	
15	499	38.23	116.1	
16	541	34.01	95.2	
17	560	61.81	167.2	
18	664	50.72	115.7	
19	739	46.93	96.3	
20	854	20.32	36.0	
21	928	44.99	73.5	
22	10,380	75.00	10.9	Upper Marker

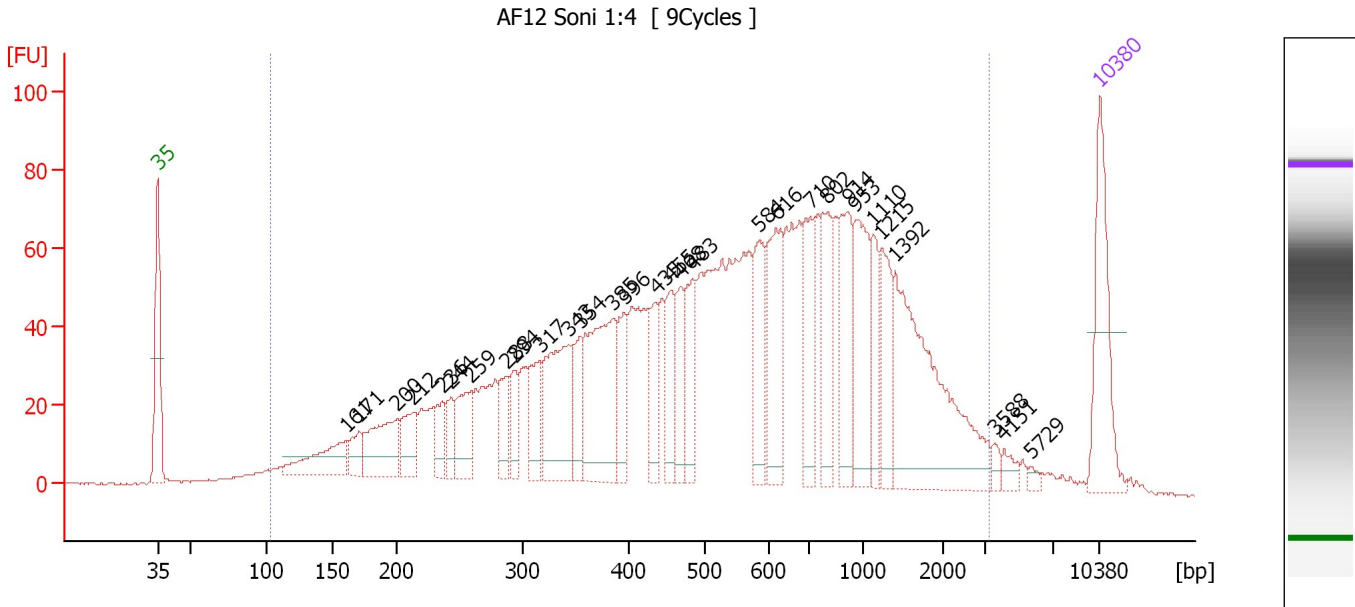
**Region table for sample 7 : AF11 Soni 1:4**

From [bp]	To [bp]	Average Size [bp]	Molarity [pmol/l]	Conc. [pg/µl]	Corr. Area	% of Total	Size distribution in CV [%]	Color
100	1,375	414	12,440.5	2,312.73	1,992.3	95	50.7	Blue

Assay Class: High Sensitivity DNA Assay  
 Data Path: C:\...ents and Settings\Bioanalyzer\2013-06-24\2013-06-24\_003.xad

Created: 6/24/2013 11:57:03 AM  
 Modified: 6/28/2013 1:21:08 PM

**Electropherogram Summary Continued ...**



**Overall Results for sample 8 : AF12 Soni 1:4**

Number of peaks found: 30                      Corr. Area 1: 2,535.6  
 Noise: 0.2

**Peak table for sample 8 : AF12 Soni 1:4**

Peak	Size [bp]	Conc. [pg/μl]	Molarity [pmol/l]	Observations
1	35	125.00	5,411.3	Lower Marker
2	161	65.31	613.9	
3	171	25.52	226.0	
4	200	78.02	590.0	
5	212	42.92	306.5	
6	236	32.94	211.1	
7	244	26.89	167.3	
8	259	53.22	310.8	
9	288	33.41	175.9	
10	294	30.08	154.8	
11	317	47.47	227.0	
12	343	116.66	514.8	
13	354	42.07	180.0	
14	385	140.20	552.1	
15	396	48.16	184.5	
16	435	43.97	153.0	
17	455	46.07	153.5	
18	468	43.59	141.2	
19	483	57.33	179.9	
20	584	59.63	154.7	
21	616	91.47	224.8	
22	710	65.20	139.1	
23	802	66.59	125.8	
24	914	71.98	119.3	
25	953	83.09	132.1	
26	1,110	36.10	49.3	

Assay Class: High Sensitivity DNA Assay  
Data Path: C:\...ents and Settings\Bioanalyzer\2013-06-24\2013-06-24\_003.xad

Created: 6/24/2013 11:57:03 AM  
Modified: 6/28/2013 1:21:08 PM

**Electropherogram Summary Continued ...**

**... Peak table for sample 8 : AF12 Soni 1:4**

Peak	Size [bp]	Conc. [pg/μl]	Molarity [pmol/l]	Observations
27	1,215	47.98	59.8	
28	1,392	187.97	204.5	
29	3,588	5.65	2.4	
30	4,151	8.42	3.1	
31	5,729	3.80	1.0	
32	10,380	75.00	10.9	Upper Marker

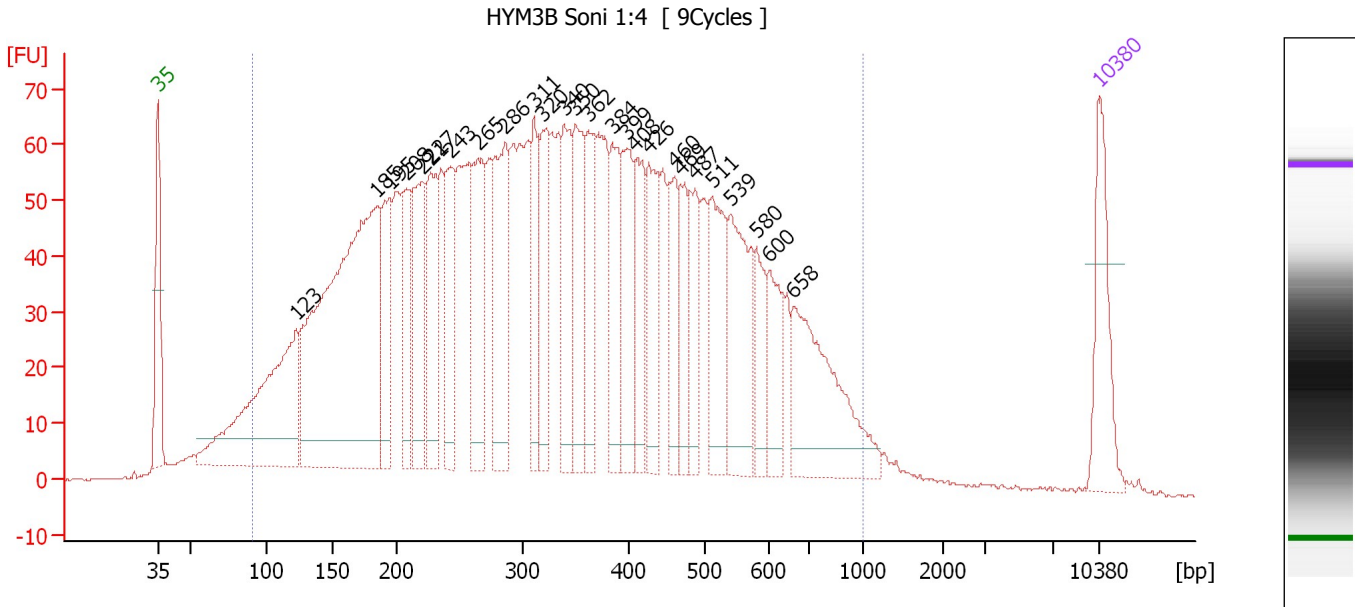
**Region table for sample 8 : AF12 Soni 1:4**

From [bp]	To [bp]	Average Size [bp]	Molarity [pmol/l]	Conc. [pg/μl]	Corr. Area	% of Total	Size distribution in CV [%]	Color
103	3,303	698	10,479.3	2,678.82	2,535.6	97	73.6	

Assay Class: High Sensitivity DNA Assay  
 Data Path: C:\...ents and Settings\Bioanalyzer\2013-06-24\2013-06-24\_003.xad

Created: 6/24/2013 11:57:03 AM  
 Modified: 6/28/2013 1:21:08 PM

**Electropherogram Summary Continued ...**



**Overall Results for sample 9 : HYM3B Soni 1:4**

Number of peaks found: 26                      Corr. Area 1: 3,044.5  
 Noise: 0.3

**Peak table for sample 9 : HYM3B Soni 1:4**

Peak	Size [bp]	Conc. [pg/μl]	Molarity [pmol/l]	Observations
1	35	125.00	5,411.3	Lower Marker
2	123	352.63	4,349.0	
3	185	710.52	5,820.9	
4	195	107.70	837.4	
5	208	93.92	683.8	
6	221	142.46	976.8	
7	227	130.14	868.0	
8	243	106.72	665.0	
9	265	158.44	904.8	
10	286	175.35	927.4	
11	311	88.25	429.6	
12	320	106.23	502.5	
13	340	114.94	512.9	
14	350	124.93	541.1	
15	362	90.33	377.6	
16	384	98.76	389.6	
17	399	105.07	399.5	
18	408	85.67	318.0	
19	426	87.51	311.2	
20	460	72.97	240.3	
21	469	66.70	215.6	
22	487	68.70	213.9	
23	511	115.41	342.1	
24	539	137.48	386.5	
25	580	54.83	143.3	
26	600	65.66	165.9	

Assay Class: High Sensitivity DNA Assay  
 Data Path: C:\...ents and Settings\Bioanalyzer\2013-06-24\2013-06-24\_003.xad

Created: 6/24/2013 11:57:03 AM  
 Modified: 6/28/2013 1:21:08 PM

### Electropherogram Summary Continued ...

#### ... Peak table for sample 9 : HYM3B Soni 1:4

Peak	Size [bp]	Conc. [pg/μl]	Molarity [pmol/l]	Observations
27	658	179.36	412.8	
28	▶ 10,380	75.00	10.9	Upper Marker

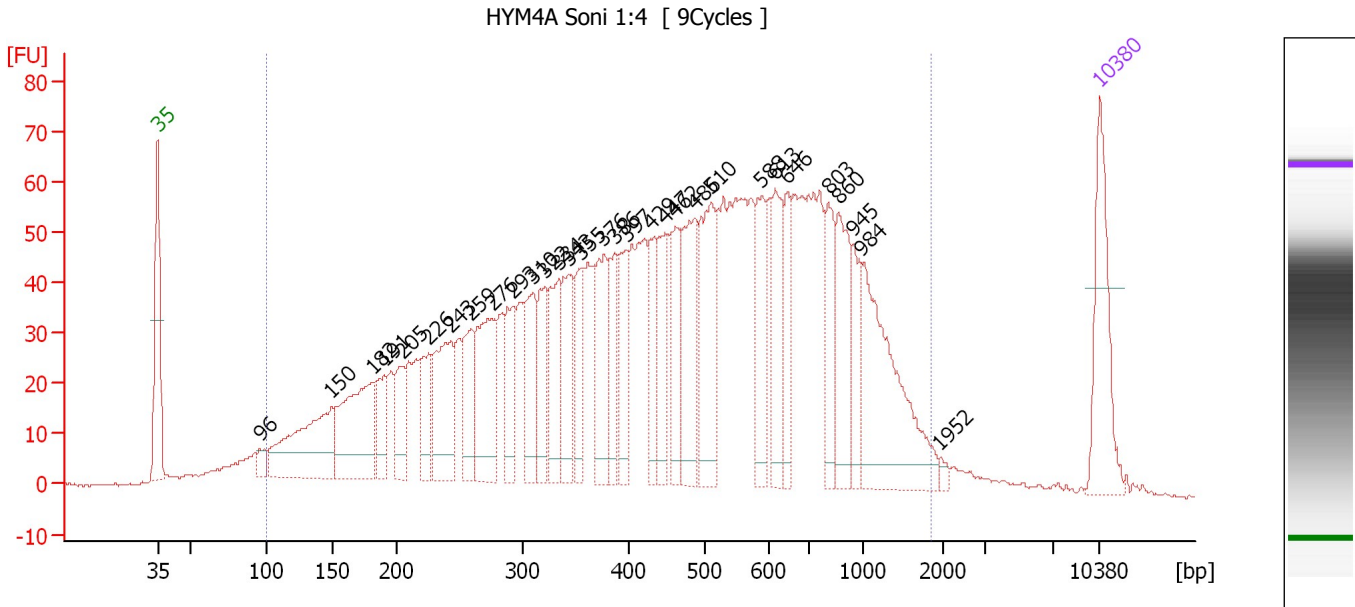
#### Region table for sample 9 : HYM3B Soni 1:4

From [bp]	To [bp]	Average Size [bp]	Molarity [pmol/l]	Conc. [pg/μl]	Corr. Area	% of Total	Size distribution in CV [%]	Color
91	1,000	359	30,442.3	5,037.92	3,044.5	95	47.0	■

Assay Class: High Sensitivity DNA Assay  
 Data Path: C:\...ents and Settings\Bioanalyzer\2013-06-24\2013-06-24\_003.xad

Created: 6/24/2013 11:57:03 AM  
 Modified: 6/28/2013 1:21:08 PM

**Electropherogram Summary Continued ...**



**Overall Results for sample 10 : HYM4A Soni 1:4**

Number of peaks found: 31                      Corr. Area 1: 2,412.1  
 Noise: 0.3

**Peak table for sample 10 : HYM4A Soni 1:4**

Peak	Size [bp]	Conc. [pg/μl]	Molarity [pmol/l]	Observations
1	35	125.00	5,411.3	Lower Marker
2	96	15.44	244.7	
3	150	158.67	1,606.6	
4	182	148.34	1,234.7	
5	191	50.16	399.0	
6	205	49.70	367.1	
7	226	55.38	371.5	
8	243	108.13	674.4	
9	259	60.96	355.9	
10	276	114.24	627.0	
11	293	61.53	318.0	
12	310	67.08	327.8	
13	322	63.73	299.7	
14	334	67.89	307.8	
15	343	73.01	322.3	
16	355	50.18	214.0	
17	376	81.32	327.8	
18	386	53.83	211.2	
19	397	61.37	234.2	
20	429	55.22	195.0	
21	447	55.20	187.1	
22	462	68.00	223.2	
23	486	104.84	327.1	
24	510	123.03	365.4	
25	588	69.03	177.9	
26	613	72.64	179.6	

Assay Class: High Sensitivity DNA Assay  
 Data Path: C:\...ents and Settings\Bioanalyzer\2013-06-24\2013-06-24\_003.xad

Created: 6/24/2013 11:57:03 AM  
 Modified: 6/28/2013 1:21:08 PM

**Electropherogram Summary Continued ...**

**... Peak table for sample 10 : HYM4A Soni 1:4**

Peak	Size [bp]	Conc. [pg/μl]	Molarity [pmol/l]	Observations
27	646	49.81	116.8	
28	803	55.63	105.0	
29	860	75.65	133.3	
30	945	37.98	60.9	
31	984	160.21	246.7	
32	1,952	4.35	3.4	
33	▶ 10,380	75.00	10.9	Upper Marker

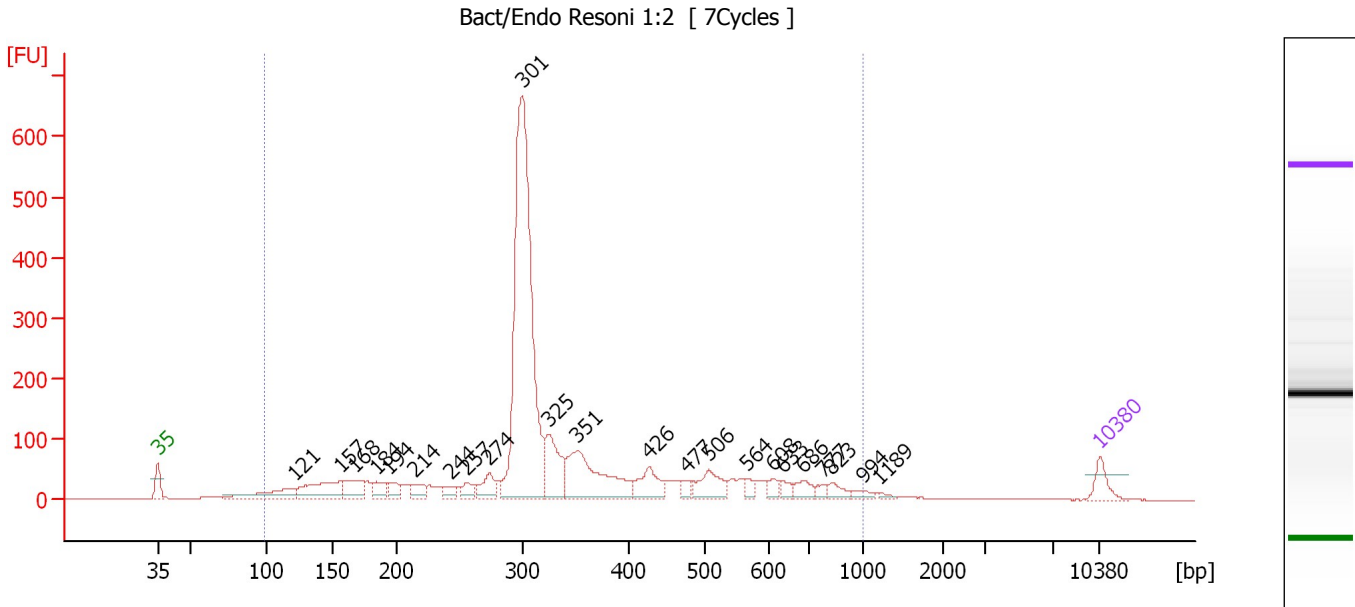
**Region table for sample 10 : HYM4A Soni 1:4**

From [bp]	To [bp]	Average Size [bp]	Molarity [pmol/l]	Conc. [pg/μl]	Corr. Area	% of Total	Size distribution in CV [%]	Color
100	1,849	517	15,611.8	3,359.86	2,412.1	96	57.8	■

Assay Class: High Sensitivity DNA Assay  
 Data Path: C:\...ents and Settings\Bioanalyzer\2013-06-24\2013-06-24\_003.xad

Created: 6/24/2013 11:57:03 AM  
 Modified: 6/28/2013 1:21:08 PM

**Electropherogram Summary Continued ...**



**Overall Results for sample 11 : Bact/Endo Resoni 1:2**

Number of peaks found: 23                      Corr. Area 1: 3,327.8  
 Noise: 0.2

**Peak table for sample 11 : Bact/Endo Resoni 1:2**

Peak	Size [bp]	Conc. [pg/μl]	Molarity [pmol/l]	Observations
1	35	125.00	5,411.3	Lower Marker
2	121	218.14	2,729.6	
3	157	315.06	3,038.6	
4	168	173.92	1,572.2	
5	184	98.17	807.9	
6	194	87.94	686.5	
7	214	90.53	642.1	
8	244	56.82	353.2	
9	257	74.43	439.3	
10	274	137.81	762.5	
11	301	2,586.37	13,019.7	
12	325	326.29	1,520.2	
13	351	582.56	2,512.9	
14	426	179.88	639.4	
15	477	48.68	154.7	
16	506	175.39	525.1	
17	564	44.48	119.5	
18	608	46.27	115.2	
19	633	45.78	109.6	
20	686	73.43	162.2	
21	777	31.74	61.9	
22	823	58.01	106.8	
23	994	33.40	50.9	
24	1,189	14.71	18.7	
25	10,380	75.00	10.9	Upper Marker



Assay Class: High Sensitivity DNA Assay  
Data Path: C:\...ents and Settings\Bioanalyzer\2013-06-24\2013-06-24\_003.xad

Created: 6/24/2013 11:57:03 AM  
Modified: 6/28/2013 1:21:08 PM

**Electropherogram Summary Continued ...**

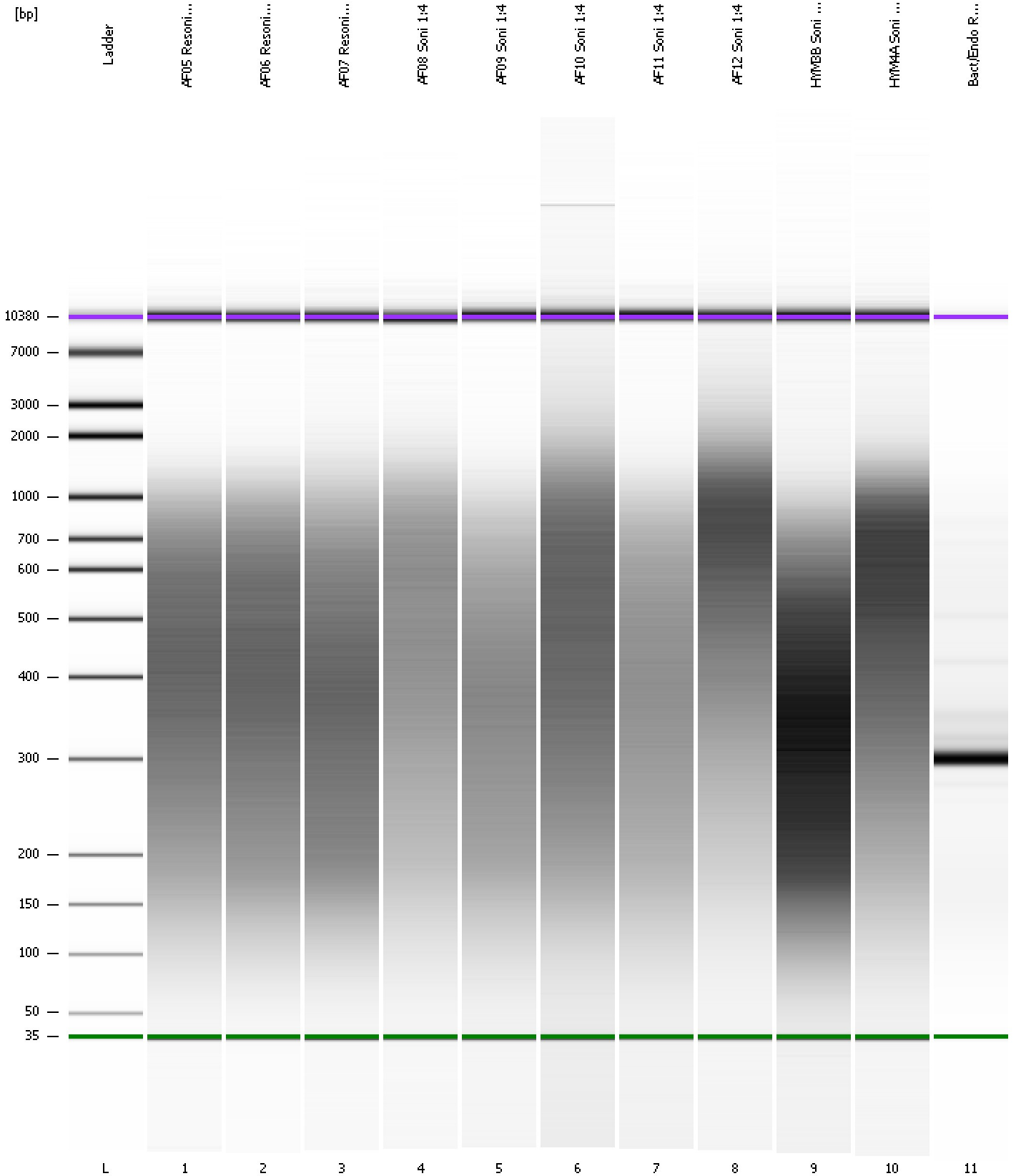
... Region table for sample 11 : Bact/Endo Resoni 1:2

From [bp]	To [bp]	Average Size [bp]	Molarity [pmol/l]	Conc. [pg/μl]	Corr. Area	% of Total	Size distribution in CV [%]	Color
98	1,000	353	33,421.9	6,125.02	3,327.8	95	42.2	■

Assay Class: High Sensitivity DNA Assay  
Data Path: C:\...ents and Settings\Bioanalyzer\2013-06-24\2013-06-24\_003.xad

Created: 6/24/2013 11:57:03 AM  
Modified: 6/28/2013 1:21:08 PM

**Gel Image**

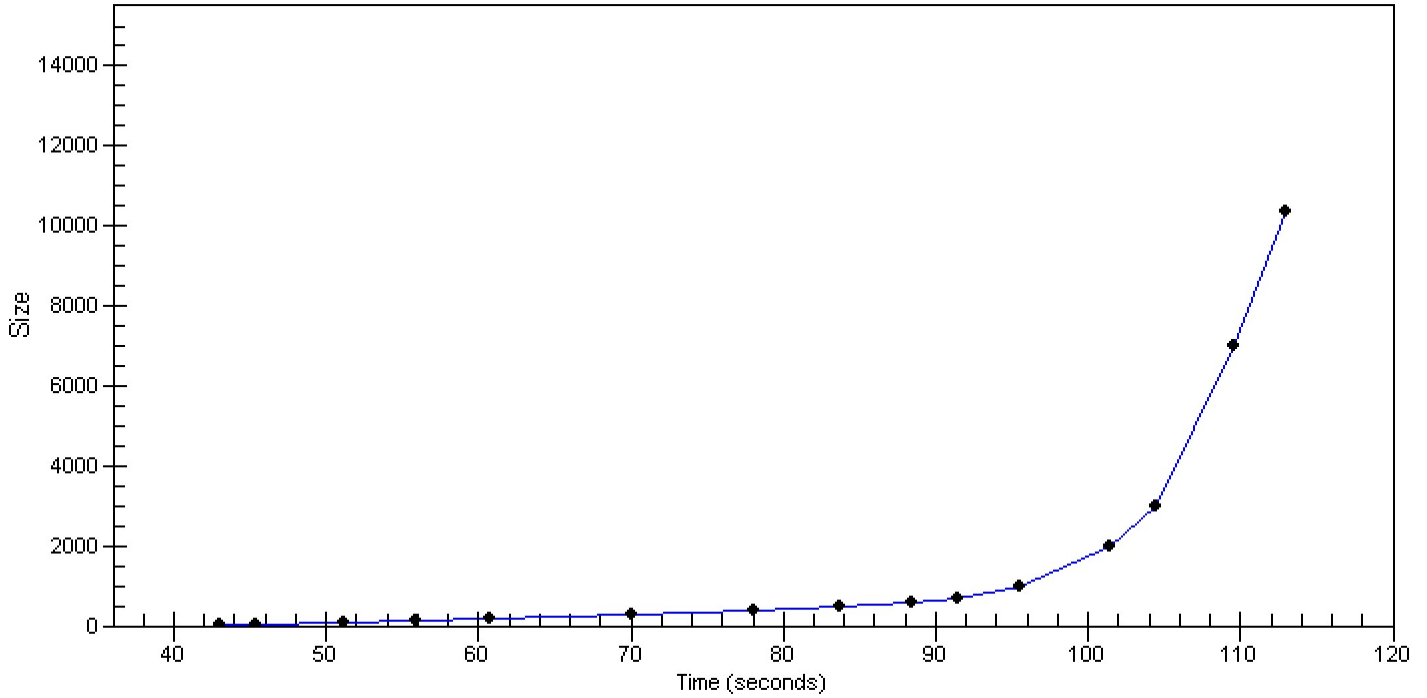


Assay Class: High Sensitivity DNA Assay  
Data Path: C:\...ents and Settings\Bioanalyzer\2013-06-24\2013-06-24\_003.xad

Created: 6/24/2013 11:57:03 AM  
Modified: 6/28/2013 1:21:08 PM

**Curves**

**Standard Curve**



Assay Class: High Sensitivity DNA Assay  
 Data Path: C:\...ents and Settings\Bioanalyzer\2013-06-24\2013-06-24\_003.xad

Created: 6/24/2013 11:57:03 AM  
 Modified: 6/28/2013 1:21:08 PM

**Run Logbook**

Description	Number	Source	Category	Sub Category	Time	Time Zone	User	Host
Run ended on port 1 (Number of wells acquired: 12)		Instrument	Run		6/24/2013 12:37:32 PM	(GMT --07:00) Pacific Standard Time	UC Davis	D8XSMGH1
Run started on port 1 (File: C:\Documents and Settings\Bioanalyzer\2013-06-24\2013-06-24_003.xad)		Instrument	Run		6/24/2013 11:57:09 AM	(GMT --07:00) Pacific Standard Time	UC Davis	D8XSMGH1
Product Number : G2938B		Instrument	Run		6/24/2013 11:57:09 AM	(GMT --07:00) Pacific Standard Time	UC Davis	D8XSMGH1
Name :		Instrument	Run		6/24/2013 11:57:09 AM	(GMT --07:00) Pacific Standard Time	UC Davis	D8XSMGH1
Vendor : Agilent Technologies		Instrument	Run		6/24/2013 11:57:09 AM	(GMT --07:00) Pacific Standard Time	UC Davis	D8XSMGH1
Serial# : DE13701086		Instrument	Run		6/24/2013 11:57:09 AM	(GMT --07:00) Pacific Standard Time	UC Davis	D8XSMGH1
Firmware : C.01.069		Instrument	Run		6/24/2013 11:57:09 AM	(GMT --07:00) Pacific Standard Time	UC Davis	D8XSMGH1
Cartridge : Electrode		Instrument	Run		6/24/2013 11:57:09 AM	(GMT --07:00) Pacific Standard Time	UC Davis	D8XSMGH1