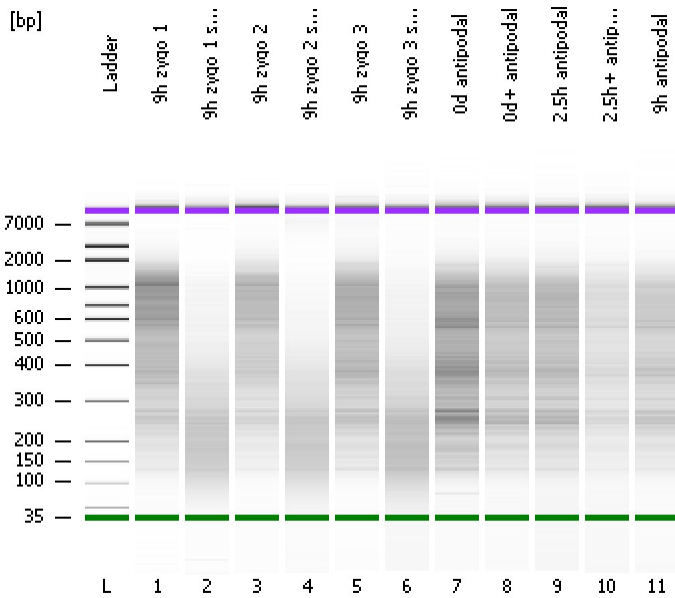


Assay Class: High Sensitivity DNA Assay
 Data Path: C:\...ents and Settings\Bioanalyzer\2013-06-24\2013-06-24_007.xad

Created: 6/24/2013 4:27:02 PM
 Modified: 6/24/2013 5:09:00 PM

Electrophoresis File Run Summary



Instrument Information:

Instrument Name: DE13701086 Firmware: C.01.069
 Serial#: DE13701086 Type: G2938B

Assay Information:

Assay Origin Path: C:\Program Files\Agilent\2100 bioanalyzer\2100 expert\assays\dsDNA\High Sensitivity DNA.xsy

Assay Class: High Sensitivity DNA Assay
 Version: 1.03
 Assay Comments: Copyright © 2003-2010 Agilent Technologies

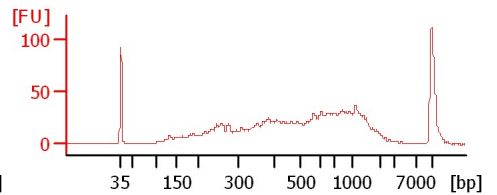
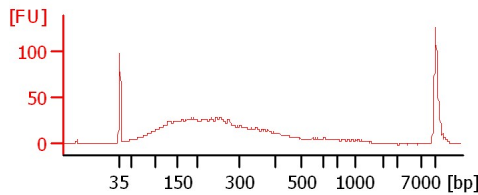
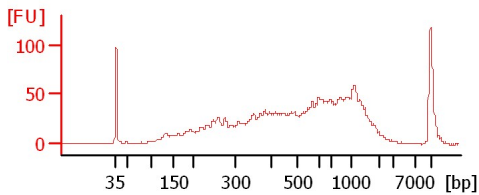
Chip Information:

Chip Lot #:
 Reagent Kit Lot #:
 Chip Comments:

9h zygo 1

9h zygo 1 sheared

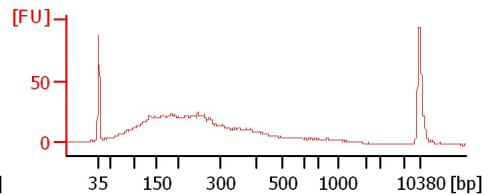
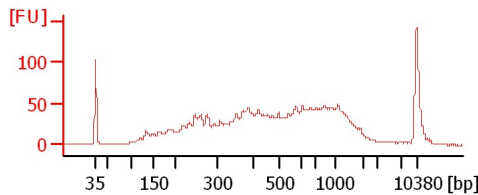
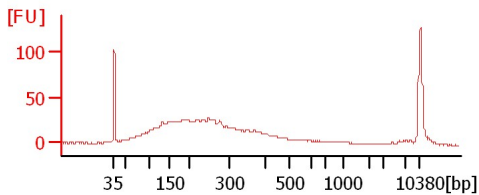
9h zygo 2



9h zygo 2 sheared

9h zygo 3

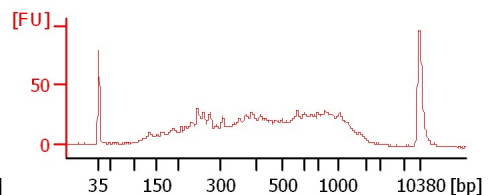
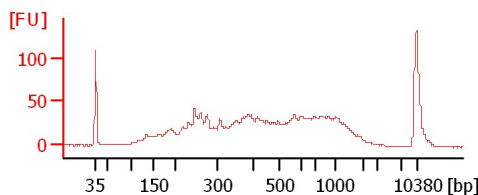
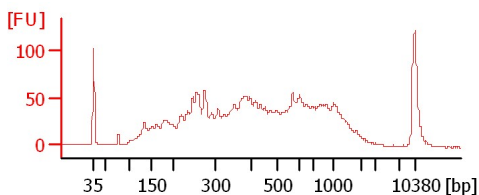
9h zygo 3 sheared



0d antipodal

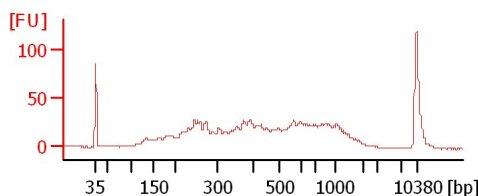
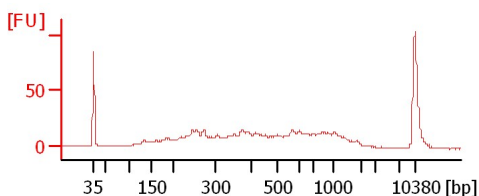
0d+ antipodal

2.5h antipodal



2.5h+ antipodal

9h antipodal



Assay Class: High Sensitivity DNA Assay
Data Path: C:\...ents and Settings\Bioanalyzer\2013-06-24\2013-06-24_007.xad

Created: 6/24/2013 4:27:02 PM
Modified: 6/24/2013 5:09:00 PM

Electrophoresis File Run Summary (Chip Summary)

Sample Name	Sample Comment	Rest. Digest	Status	Observation	Result Label	Result Color
9h zygo 1		<input type="checkbox"/>	✓			
9h zygo 1 sheared		<input type="checkbox"/>	✓			
9h zygo 2		<input type="checkbox"/>	✓			
9h zygo 2 sheared		<input type="checkbox"/>	✓			
9h zygo 3		<input type="checkbox"/>	✓			
9h zygo 3 sheared		<input type="checkbox"/>	✓			
0d antipodal		<input type="checkbox"/>	✓			
0d+ antipodal		<input type="checkbox"/>	✓			
2.5h antipodal		<input type="checkbox"/>	✓			
2.5h+ antipodal		<input type="checkbox"/>	✓			
9h antipodal		<input type="checkbox"/>	✓			
Ladder		<input type="checkbox"/>	✓			

Chip Lot #

Reagent Kit Lot #

Chip Comments :

Assay Class: High Sensitivity DNA Assay
Data Path: C:\...ents and Settings\Bioanalyzer\2013-06-24\2013-06-24_007.xad

Created: 6/24/2013 4:27:02 PM
Modified: 6/24/2013 5:09:00 PM

Electrophoresis Assay Details

General Analysis Settings

Number of Available Sample and Ladder Wells (Max.) : 12
Minimum Visible Range [s] : 32
Maximum Visible Range [s] : 138
Start Analysis Time Range [s] : 33
End Analysis Time Range [s] : 137.5
Ladder Concentration [pg/μl] : 1950
Uses Standard Area for Ladder Fragments
Lower Marker Concentration [pg/μl] : 125
Upper Marker Concentration [pg/μl] : 75
Used Upper Marker for Quantitation
Standard Curve Fit is Point to Point
Show Data Aligned to Lower and Upper Marker

Integrator Settings

Integration Start Time [s] : 33.05
Integration End Time [s] : 137
Slope Threshold : 0.8
Height Threshold [FU] : 5
Area Threshold : 0.1
Width Threshold [s] : 0.6
Baseline Plateau [s] : 0.5

Filter Settings

Filter Width [s] : 0.5
Polynomial Order : 4

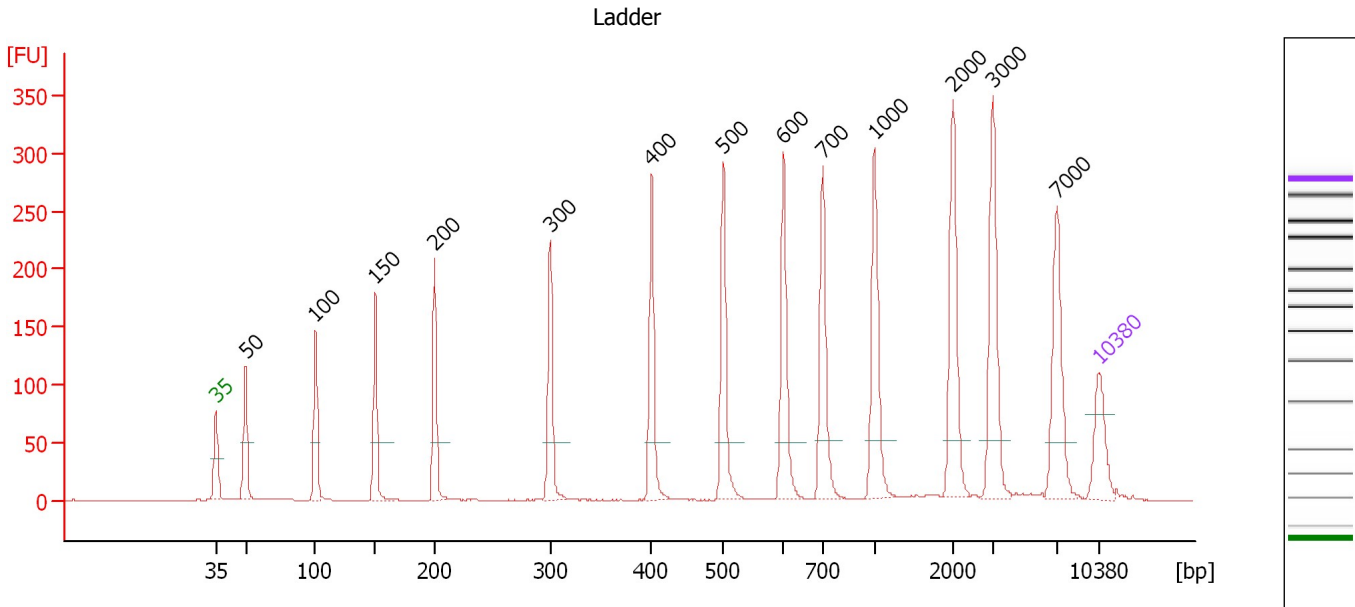
Ladder

Ladder Peak	Size	Area
1	35	160
2	50	210
3	100	208
4	150	221
5	200	242
6	300	270
7	400	305
8	500	306
9	600	336
10	700	321
11	1000	366
12	2000	413
13	3000	411
14	7000	400
15	10380	214

Assay Class: High Sensitivity DNA Assay
 Data Path: C:\...ents and Settings\Bioanalyzer\2013-06-24\2013-06-24_007.xad

Created: 6/24/2013 4:27:02 PM
 Modified: 6/24/2013 5:09:00 PM

Electropherogram Summary



Overall Results for Ladder

Noise: 0.1

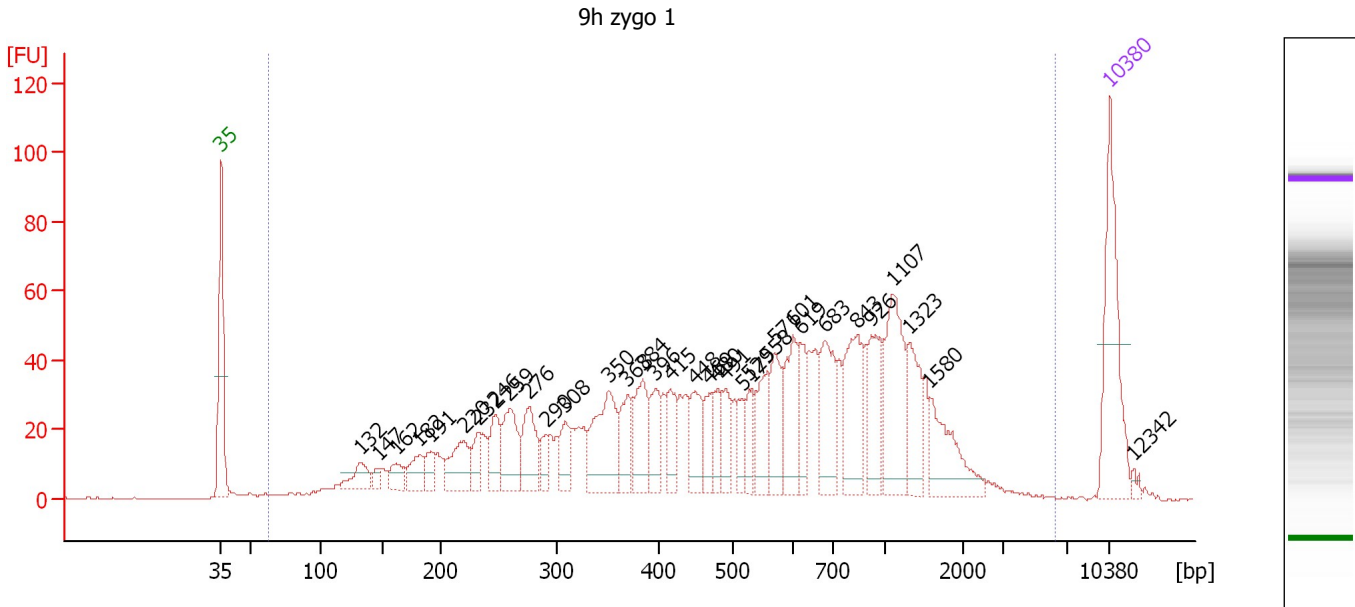
Peak table for Ladder

Peak	Size [bp]	Conc. [pg/μl]	Molarity [pmol/l]	Observations
1	35	125.00	5,411.3	Lower Marker
2	50	150.00	4,545.5	Ladder Peak
3	100	150.00	2,272.7	Ladder Peak
4	150	150.00	1,515.2	Ladder Peak
5	200	150.00	1,136.4	Ladder Peak
6	300	150.00	757.6	Ladder Peak
7	400	150.00	568.2	Ladder Peak
8	500	150.00	454.5	Ladder Peak
9	600	150.00	378.8	Ladder Peak
10	700	150.00	324.7	Ladder Peak
11	1,000	150.00	227.3	Ladder Peak
12	2,000	150.00	113.6	Ladder Peak
13	3,000	150.00	75.8	Ladder Peak
14	7,000	150.00	32.5	Ladder Peak
15	10,380	75.00	10.9	Upper Marker

Assay Class: High Sensitivity DNA Assay
 Data Path: C:\...ents and Settings\Bioanalyzer\2013-06-24\2013-06-24_007.xad

Created: 6/24/2013 4:27:02 PM
 Modified: 6/24/2013 5:09:00 PM

Electropherogram Summary Continued ...



Overall Results for sample 1 : 9h zygo 1

Number of peaks found: 34 Corr. Area 1: 1,797.9
 Noise: 0.2

Peak table for sample 1 : 9h zygo 1


Peak	Size [bp]	Conc. [pg/μl]	Molarity [pmol/l]	Observations
1	35	125.00	5,411.3	Lower Marker
2	132	28.94	332.6	
3	147	9.85	101.6	
4	162	19.30	180.4	
5	182	27.49	229.1	
6	191	16.66	132.1	
7	220	44.08	303.8	
8	232	22.30	145.8	
9	246	34.87	214.8	
10	259	52.61	308.1	
11	276	48.42	266.1	
12	290	17.01	88.9	
13	308	28.42	139.9	
14	350	79.04	342.6	
15	368	33.36	137.4	
16	384	48.93	193.3	
17	396	31.44	120.2	
18	415	30.67	111.9	
19	448	36.48	123.3	
20	469	23.34	75.4	
21	480	25.58	80.7	
22	491	25.08	77.4	
23	517	17.61	51.6	
24	529	21.21	60.8	
25	558	34.15	92.8	
26	571	42.37	112.4	

Assay Class: High Sensitivity DNA Assay
 Data Path: C:\...ents and Settings\Bioanalyzer\2013-06-24\2013-06-24_007.xad

Created: 6/24/2013 4:27:02 PM
 Modified: 6/24/2013 5:09:00 PM

Electropherogram Summary Continued ...

... Peak table for sample 1 : 9h zygo 1

Peak	Size [bp]	Conc. [pg/μl]	Molarity [pmol/l]	Observations
27	601	45.66	115.1	
28	619	29.77	72.9	
29	683	56.80	126.0	
30	843	64.03	115.1	
31	926	39.27	64.3	
32	1,107	75.28	103.1	
33	1,323	38.94	44.6	
34	1,580	47.07	45.1	
35	 10,380	75.00	10.9	Upper Marker
36	12,342	0.00	0.0	

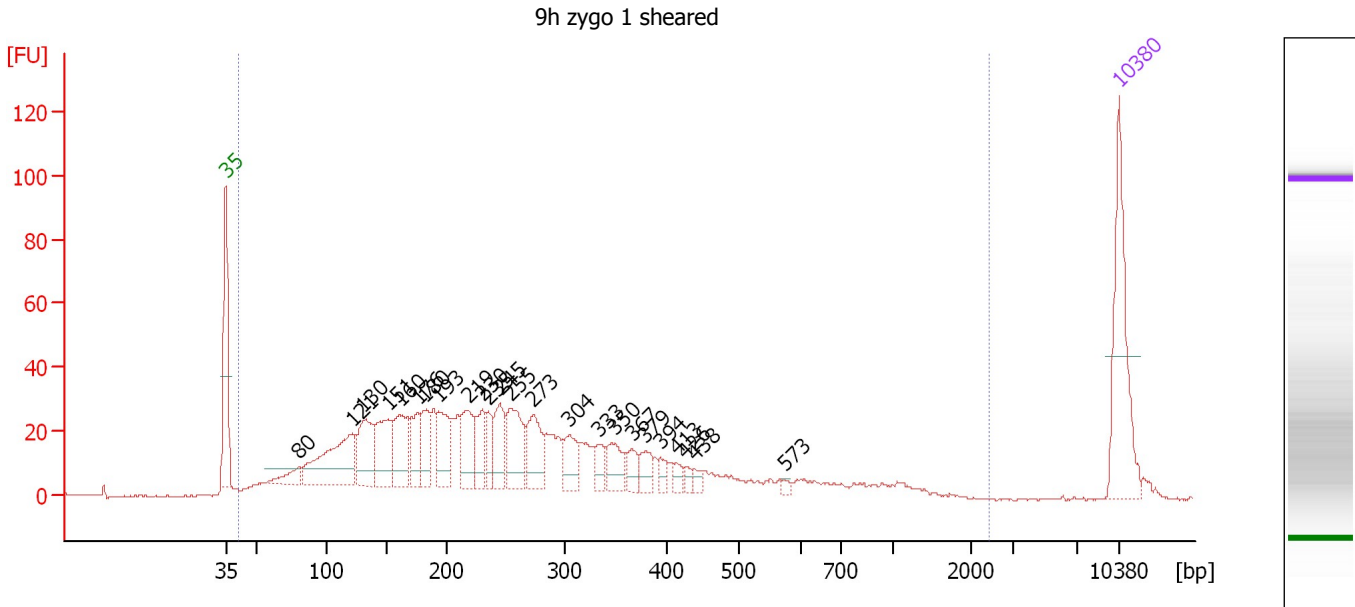
Region table for sample 1 : 9h zygo 1

From [bp]	To [bp]	Average Size [bp]	Molarity [pmol/l]	Conc. [pg/μl]	Corr. Area	% of Total	Size distribution in CV [%]	Color
63	6,228	673	7,111.7	1,646.68	1,797.9	99	77.4	

Assay Class: High Sensitivity DNA Assay
 Data Path: C:\...ents and Settings\Bioanalyzer\2013-06-24\2013-06-24_007.xad

Created: 6/24/2013 4:27:02 PM
 Modified: 6/24/2013 5:09:00 PM

Electropherogram Summary Continued ...



Overall Results for sample 2 : 9h zygo 1 sheared

Number of peaks found: 24 Corr. Area 1: 1,196.7
 Noise: 0.3

Peak table for sample 2 : 9h zygo 1 sheared

Peak	Size [bp]	Conc. [pg/μl]	Molarity [pmol/l]	Observations
1	35	125.00	5,411.3	Lower Marker
2	80	21.57	407.0	
3	121	118.40	1,487.3	
4	130	67.17	780.9	
5	151	67.01	674.1	
6	160	58.62	553.7	
7	176	38.73	333.5	
8	180	38.37	322.2	
9	193	47.17	370.5	
10	219	46.87	324.8	
11	230	34.42	226.7	
12	235	23.22	149.9	
13	245	42.02	259.8	
14	255	62.47	371.7	
15	273	48.87	270.9	
16	304	31.06	154.6	
17	333	17.78	80.9	
18	350	27.69	120.0	
19	367	16.68	68.9	
20	379	17.46	69.7	
21	394	8.89	34.2	
22	413	8.47	31.1	
23	426	5.95	21.2	
24	438	6.46	22.3	
25	573	3.49	9.2	
26	10,380	75.00	10.9	Upper Marker

Assay Class: High Sensitivity DNA Assay
Data Path: C:\...ents and Settings\Bioanalyzer\2013-06-24\2013-06-24_007.xad

Created: 6/24/2013 4:27:02 PM
Modified: 6/24/2013 5:09:00 PM

Electropherogram Summary Continued ...

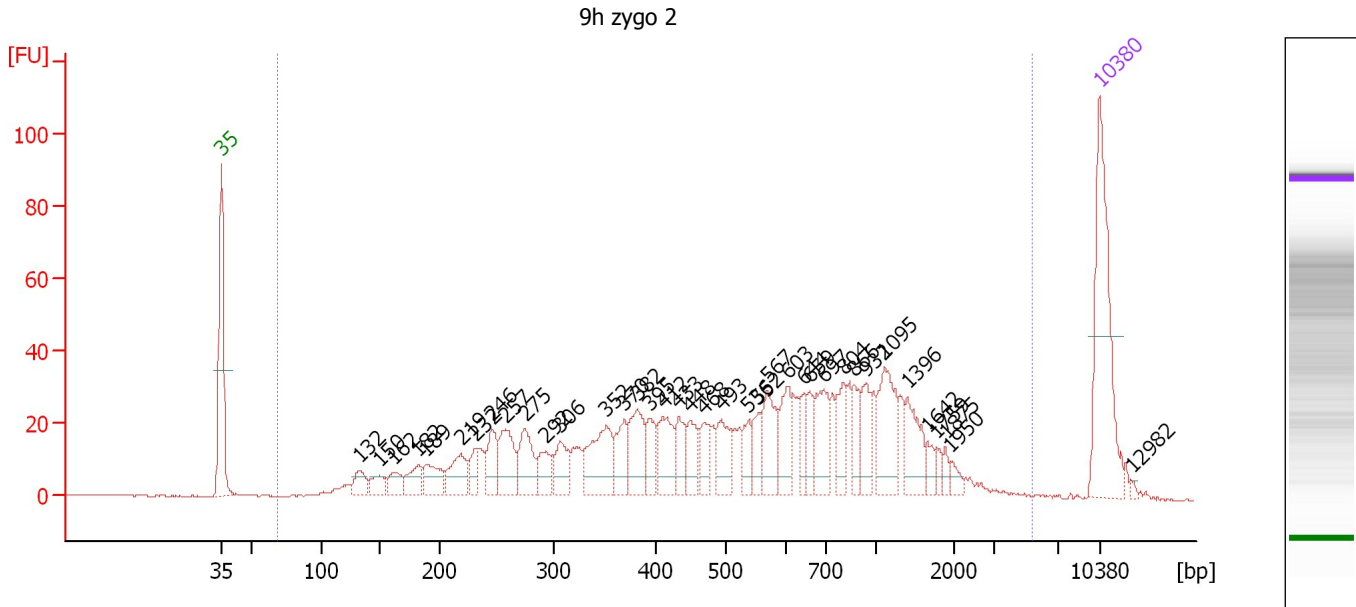
... Region table for sample 2 : 9h zygo 1 sheared

From [bp]	To [bp]	Average Size [bp]	Molarity [pmol/l]	Conc. [pg/μl]	Corr. Area	% of Total	Size distribution in CV [%]	Color
41	2,408	292	11,361.7	1,325.80	1,196.7	99	73.1	■

Assay Class: High Sensitivity DNA Assay
 Data Path: C:\...ents and Settings\Bioanalyzer\2013-06-24\2013-06-24_007.xad

Created: 6/24/2013 4:27:02 PM
 Modified: 6/24/2013 5:09:00 PM

Electropherogram Summary Continued ...



Overall Results for sample 3 : 9h zygo 2

Number of peaks found: 38 Corr. Area 1: 1,174.3
 Noise: 0.2

Peak table for sample 3 : 9h zygo 2


Peak	Size [bp]	Conc. [pg/μl]	Molarity [pmol/l]	Observations
1	35	125.00	5,411.3	Lower Marker
2	132	16.36	188.1	
3	150	12.95	131.0	
4	162	15.41	144.2	
5	182	19.06	158.3	
6	189	23.37	187.7	
7	219	28.89	199.9	
8	232	14.23	92.9	
9	246	25.13	154.6	
10	257	37.38	220.4	
11	275	34.52	190.5	
12	292	20.00	103.7	
13	306	23.93	118.6	
14	352	47.00	202.4	
15	370	25.62	105.0	
16	382	35.49	140.8	
17	395	20.55	78.9	
18	412	31.75	116.8	
19	433	20.46	71.6	
20	448	20.45	69.1	
21	468	18.33	59.3	
22	493	24.78	76.1	
23	536	13.79	39.0	
24	552	15.91	43.7	
25	567	31.59	84.4	
26	603	24.98	62.8	

Assay Class: High Sensitivity DNA Assay
 Data Path: C:\...ents and Settings\Bioanalyzer\2013-06-24\2013-06-24_007.xad


Created: 6/24/2013 4:27:02 PM
 Modified: 6/24/2013 5:09:00 PM

Electropherogram Summary Continued ...

... Peak table for sample 3 : 9h zygo 2

Peak	Size [bp]	Conc. [pg/μl]	Molarity [pmol/l]	Observations
27	644	13.66	32.1	
28	659	13.88	31.9	
29	697	32.14	69.9	
30	804	22.06	41.6	
31	866	16.37	28.6	
32	932	18.87	30.7	
33	1,095	39.23	54.3	
34	1,396	24.90	27.0	
35	1,642	6.95	6.4	
36	1,759	4.57	3.9	
37	1,875	3.99	3.2	
38	1,950	4.78	3.7	
39	 10,380	75.00	10.9	Upper Marker
40	12,982	0.00	0.0	

Region table for sample 3 : 9h zygo 2

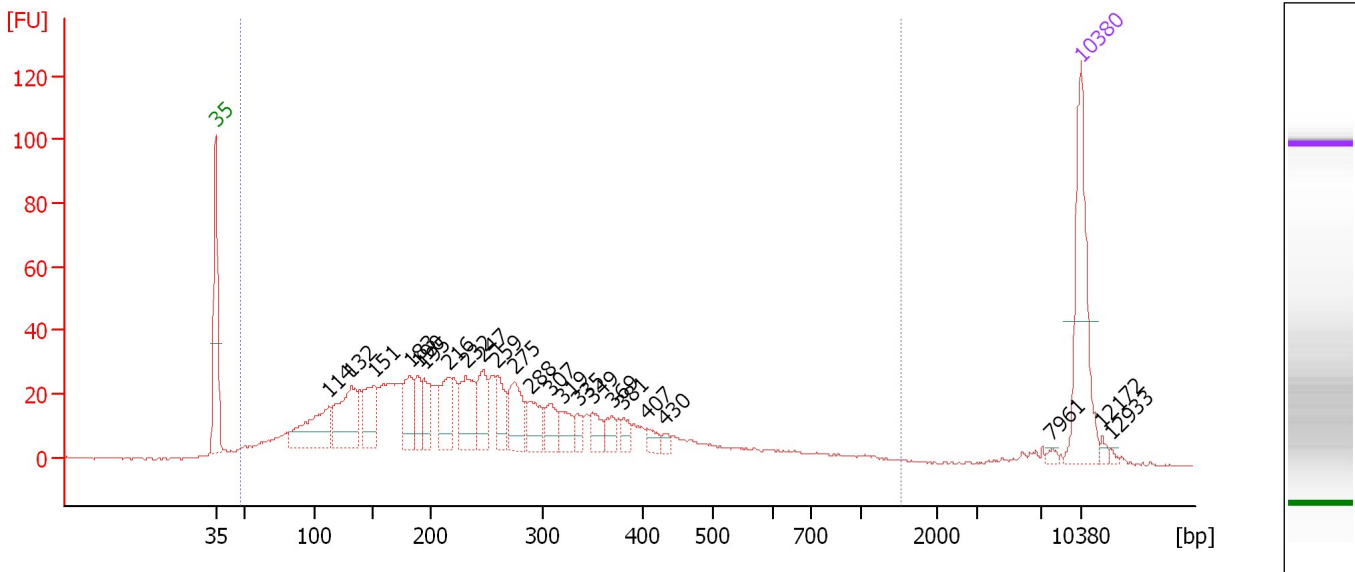
From [bp]	To [bp]	Average Size [bp]	Molarity [pmol/l]	Conc. [pg/μl]	Corr. Area	% of Total	Size distribution in CV [%]	Color
69	5,373	668	4,167.4	997.84	1,174.3	99	75.9	

Assay Class: High Sensitivity DNA Assay
 Data Path: C:\...ents and Settings\Bioanalyzer\2013-06-24\2013-06-24_007.xad

Created: 6/24/2013 4:27:02 PM
 Modified: 6/24/2013 5:09:00 PM

Electropherogram Summary Continued ...

9h zygo 2 sheared



Overall Results for sample 4 : 9h zygo 2 sheared

Number of peaks found: 23 Corr. Area 1: 1,096.0
 Noise: 0.2

Peak table for sample 4 : 9h zygo 2 sheared

Peak	Size [bp]	Conc. [pg/μl]	Molarity [pmol/l]	Observations
1	35	125.00	5,411.3	Lower Marker
2	114	76.13	1,015.9	
3	132	82.79	948.7	
4	151	52.62	526.8	
5	183	39.14	324.7	
6	190	25.27	201.5	
7	195	30.58	238.2	
8	216	43.22	303.7	
9	232	51.83	339.1	
10	247	38.16	234.4	
11	259	33.07	193.5	
12	275	42.91	236.5	
13	288	31.30	164.6	
14	307	23.51	116.2	
15	319	20.76	98.8	
16	335	10.87	49.2	
17	349	17.12	74.3	
18	369	12.78	52.5	
19	381	9.49	37.8	
20	407	9.45	35.2	
21	430	5.40	19.0	
22	7,961	2.56	0.5	
23	10,380	75.00	10.9	Upper Marker
24	12,172	0.00	0.0	
25	12,933	0.00	0.0	

Assay Class: High Sensitivity DNA Assay
Data Path: C:\...ents and Settings\Bioanalyzer\2013-06-24\2013-06-24_007.xad

Created: 6/24/2013 4:27:02 PM
Modified: 6/24/2013 5:09:00 PM

Electropherogram Summary Continued ...

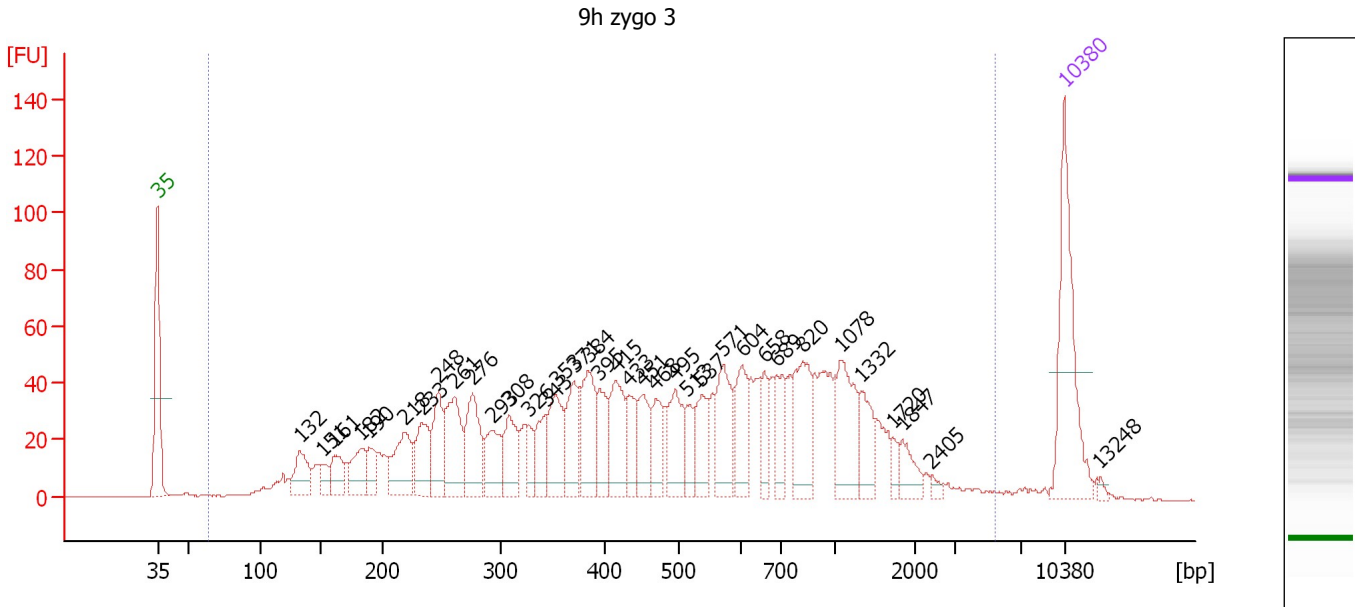
... Region table for sample 4 : 9h zygo 2 sheared

From [bp]	To [bp]	Average Size [bp]	Molarity [pmol/l]	Conc. [pg/μl]	Corr. Area	% of Total	Size distribution in CV [%]	Color
47	1,520	271	10,118.8	1,185.29	1,096.0	97	61.4	■

Assay Class: High Sensitivity DNA Assay
 Data Path: C:\...ents and Settings\Bioanalyzer\2013-06-24\2013-06-24_007.xad

Created: 6/24/2013 4:27:02 PM
 Modified: 6/24/2013 5:09:00 PM

Electropherogram Summary Continued ...



Overall Results for sample 5 : 9h zygo 3

Number of peaks found: 36 Corr. Area 1: 2,023.7
 Noise: 0.2

Peak table for sample 5 : 9h zygo 3

Peak	Size [bp]	Conc. [pg/μl]	Molarity [pmol/l]	Observations
1	35	125.00	5,411.3	Lower Marker
2	132	36.26	415.4	
3	151	13.75	138.1	
4	161	25.96	244.3	
5	182	33.53	279.1	
6	190	20.49	163.8	
7	218	47.64	330.4	
8	233	42.54	276.3	
9	248	42.91	262.6	
10	261	62.37	362.1	
11	276	55.19	303.2	
12	293	36.72	190.2	
13	308	37.65	185.3	
14	326	15.71	73.1	
15	343	26.58	117.3	
16	353	45.65	195.9	
17	371	39.59	161.9	
18	384	51.61	203.8	
19	395	30.97	118.9	
20	415	48.46	176.7	
21	433	27.12	94.9	
22	451	32.96	110.8	
23	468	26.39	85.4	
24	495	43.58	133.5	
25	513	19.47	57.5	
26	537	30.14	85.1	

Assay Class: High Sensitivity DNA Assay
 Data Path: C:\...ents and Settings\Bioanalyzer\2013-06-24\2013-06-24_007.xad

Created: 6/24/2013 4:27:02 PM
 Modified: 6/24/2013 5:09:00 PM

Electropherogram Summary Continued ...

... Peak table for sample 5 : 9h zygo 3

Peak	Size [bp]	Conc. [pg/μl]	Molarity [pmol/l]	Observations
27	571	46.56	123.6	
28	604	36.11	90.5	
29	658	21.57	49.7	
30	689	28.76	63.2	
31	820	48.69	89.9	
32	1,078	50.17	70.5	
33	1,332	24.99	28.4	
34	1,720	6.52	5.7	
35	1,847	15.15	12.4	
36	2,405	3.02	1.9	
37	▶ 10,380	75.00	10.9	Upper Marker
38	13,248	0.00	0.0	

Region table for sample 5 : 9h zygo 3

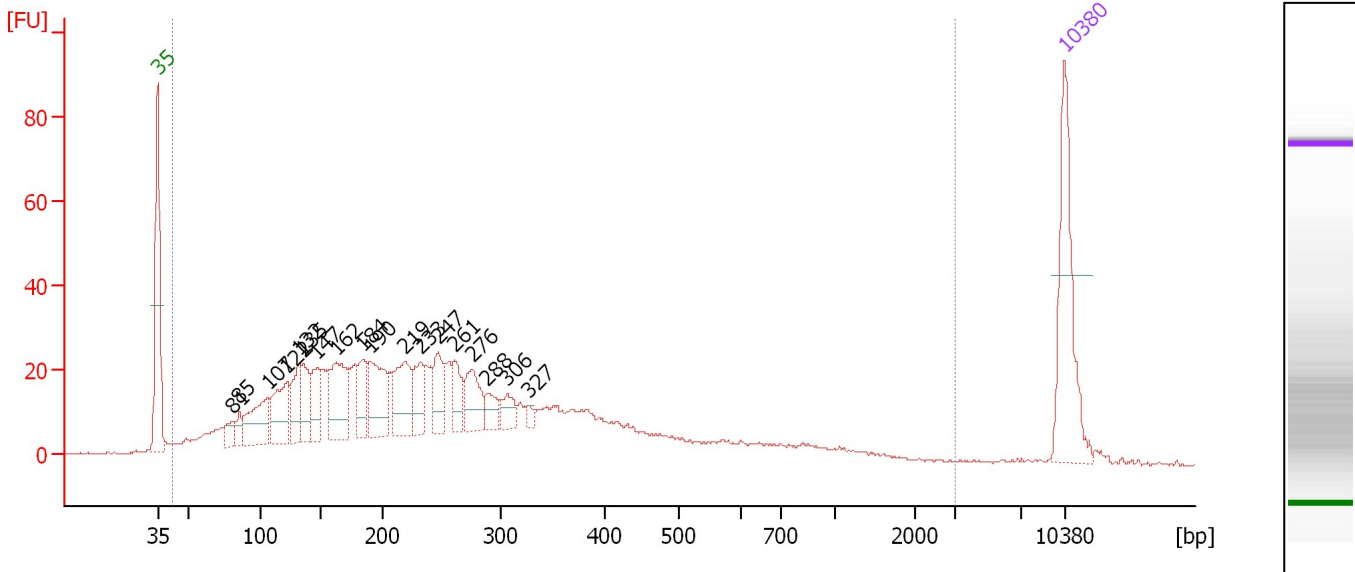
From [bp]	To [bp]	Average Size [bp]	Molarity [pmol/l]	Conc. [pg/μl]	Corr. Area	% of Total	Size distribution in CV [%]	Color
64	5,407	636	6,736.9	1,489.32	2,023.7	99	84.2	

Assay Class: High Sensitivity DNA Assay
 Data Path: C:\...ents and Settings\Bioanalyzer\2013-06-24\2013-06-24_007.xad

Created: 6/24/2013 4:27:02 PM
 Modified: 6/24/2013 5:09:00 PM

Electropherogram Summary Continued ...

9h zygo 3 sheared



Overall Results for sample 6 : 9h zygo 3 sheared

Number of peaks found: 18 Corr. Area 1: 983.8
 Noise: 0.2

Peak table for sample 6 : 9h zygo 3 sheared

Peak	Size [bp]	Conc. [pg/μl]	Molarity [pmol/l]	Observations
1	35	125.00	5,411.3	Lower Marker
2	81	15.96	297.5	
3	85	13.65	242.4	
4	107	57.72	820.4	
5	122	56.33	699.5	
6	132	39.23	451.0	
7	135	37.07	415.8	
8	147	34.30	354.1	
9	162	71.68	669.4	
10	184	36.35	298.7	
11	190	65.85	525.0	
12	219	55.87	386.2	
13	233	31.81	207.2	
14	247	35.86	219.9	
15	261	25.60	148.5	
16	276	37.37	205.5	
17	288	16.22	85.3	
18	306	17.07	84.4	
19	327	4.75	22.0	
20	10,380	75.00	10.9	Upper Marker

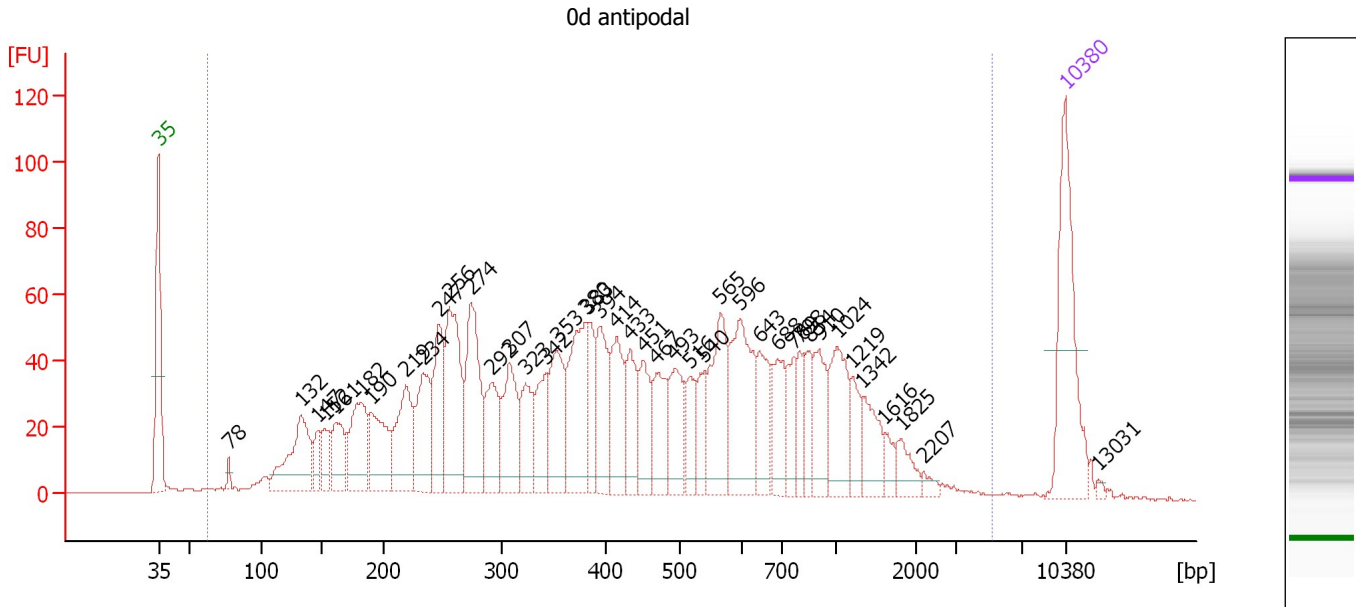
Region table for sample 6 : 9h zygo 3 sheared

From [bp]	To [bp]	Average Size [bp]	Molarity [pmol/l]	Conc. [pg/μl]	Corr. Area	% of Total	Size distribution in CV [%]	Color
42	2,979	291	11,613.4	1,322.40	983.8	99	80.8	Blue

Assay Class: High Sensitivity DNA Assay
 Data Path: C:\...ents and Settings\Bioanalyzer\2013-06-24\2013-06-24_007.xad

Created: 6/24/2013 4:27:02 PM
 Modified: 6/24/2013 5:09:00 PM

Electropherogram Summary Continued ...



Overall Results for sample 7 : 0d antipodal

Number of peaks found: 42 Corr. Area 1: 2,391.6
 Noise: 0.2

Peak table for sample 7 : 0d antipodal

Peak	Size [bp]	Conc. [pg/μl]	Molarity [pmol/l]	Observations
1	35	125.00	5,411.3	Lower Marker
2	78	5.30	103.5	
3	132	80.91	925.8	
4	147	18.64	192.7	
5	152	24.24	241.2	
6	161	40.14	376.9	
7	182	65.26	542.3	
8	190	59.98	478.3	
9	219	68.52	473.9	
10	234	60.51	392.3	
11	247	60.06	367.9	
12	256	99.12	586.2	
13	274	90.09	498.6	
14	292	48.34	251.0	
15	307	56.89	280.4	
16	323	40.10	188.1	
17	342	38.28	169.6	
18	353	57.75	247.8	
19	380	78.22	311.5	
20	383	31.63	125.2	
21	394	49.61	190.6	
22	414	48.48	177.4	
23	433	37.42	131.0	
24	451	37.29	125.3	
25	467	40.65	131.8	
26	493	40.68	125.1	

Assay Class: High Sensitivity DNA Assay
 Data Path: C:\...ents and Settings\Bioanalyzer\2013-06-24\2013-06-24_007.xad


Created: 6/24/2013 4:27:02 PM
 Modified: 6/24/2013 5:09:00 PM

Electropherogram Summary Continued ...

... Peak table for sample 7 : Od antipodal

Peak	Size [bp]	Conc. [pg/µl]	Molarity [pmol/l]	Observations
27	516	23.18	68.0	
28	540	23.21	65.1	
29	565	60.91	163.3	
30	596	79.84	202.9	
31	643	34.54	81.3	
32	688	33.44	73.6	
33	769	21.60	42.6	
34	798	19.54	37.1	
35	854	20.49	36.4	
36	910	33.30	55.5	
37	1,024	44.33	65.6	
38	1,219	19.49	24.2	
39	1,342	26.34	29.7	
40	1,616	8.64	8.1	
41	1,825	14.44	12.0	
42	2,207	4.28	2.9	
43	10,380	75.00	10.9	Upper Marker
44	13,031	0.00	0.0	

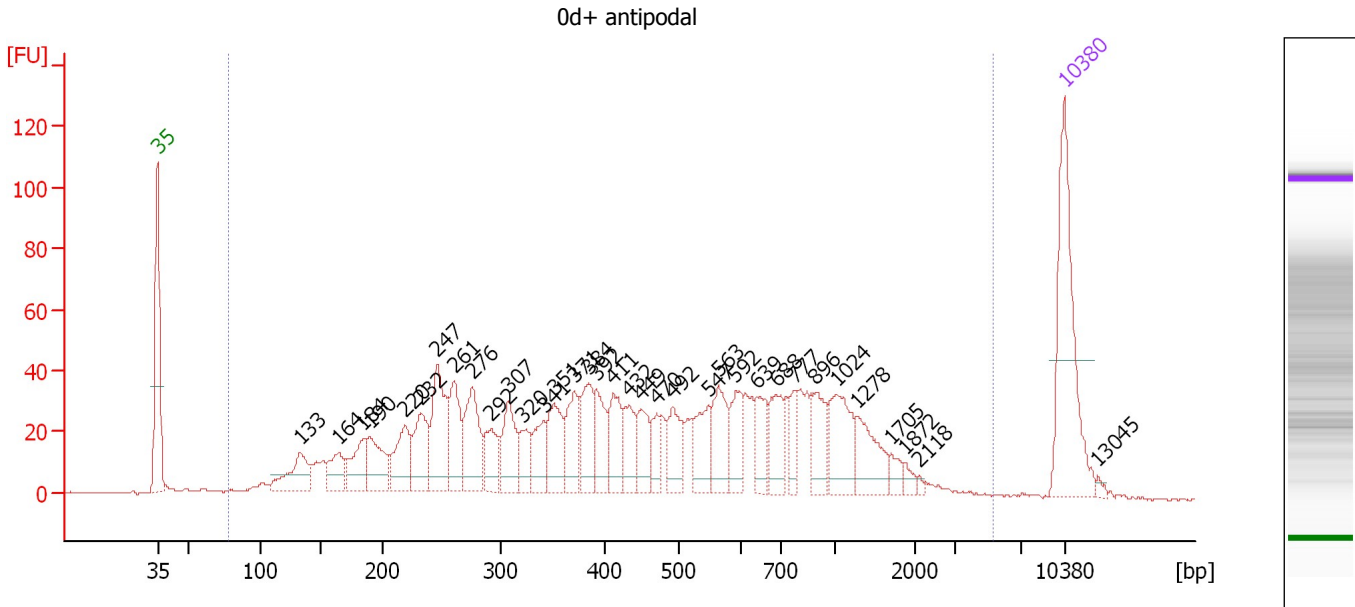
Region table for sample 7 : Od antipodal

From [bp]	To [bp]	Average Size [bp]	Molarity [pmol/l]	Conc. [pg/µl]	Corr. Area	% of Total	Size distribution in CV [%]	Color
63	5,166	547	9,332.3	1,844.77	2,391.6	99	80.4	

Assay Class: High Sensitivity DNA Assay
 Data Path: C:\...ents and Settings\Bioanalyzer\2013-06-24\2013-06-24_007.xad

Created: 6/24/2013 4:27:02 PM
 Modified: 6/24/2013 5:09:00 PM

Electropherogram Summary Continued ...



Overall Results for sample 8 : Od+ antipodal

Number of peaks found: 35 Corr. Area 1: 1,660.4
 Noise: 0.3

Peak table for sample 8 : Od+ antipodal

Peak	Size [bp]	Conc. [pg/μl]	Molarity [pmol/l]	Observations
1	35	125.00	5,411.3	Lower Marker
2	133	38.62	440.0	
3	164	25.23	233.0	
4	184	30.02	246.9	
5	190	39.12	312.1	
6	220	39.42	272.0	
7	232	42.14	274.7	
8	247	63.13	387.8	
9	261	41.76	242.5	
10	276	51.35	281.8	
11	292	27.05	140.4	
12	307	36.79	181.7	
13	320	19.37	91.6	
14	341	25.99	115.5	
15	351	35.74	154.2	
16	371	33.15	135.5	
17	384	32.76	129.2	
18	392	28.62	110.8	
19	411	29.97	110.5	
20	432	23.62	82.8	
21	449	24.24	81.8	
22	470	14.29	46.1	
23	492	27.49	84.6	
24	547	30.18	83.6	
25	563	33.03	88.9	
26	592	24.91	63.8	

Assay Class: High Sensitivity DNA Assay
 Data Path: C:\...ents and Settings\Bioanalyzer\2013-06-24\2013-06-24_007.xad


Created: 6/24/2013 4:27:02 PM
 Modified: 6/24/2013 5:09:00 PM

Electropherogram Summary Continued ...

... Peak table for sample 8 : 0d+ antipodal

Peak	Size [bp]	Conc. [pg/µl]	Molarity [pmol/l]	Observations
27	639	22.10	52.4	
28	688	27.68	61.0	
29	777	14.49	28.3	
30	896	27.57	46.6	
31	1,024	36.63	54.2	
32	1,278	28.58	33.9	
33	1,705	6.30	5.6	
34	1,872	4.37	3.5	
35	2,118	1.69	1.2	
36	▶ 10,380	75.00	10.9	Upper Marker
37	13,045	0.00	0.0	

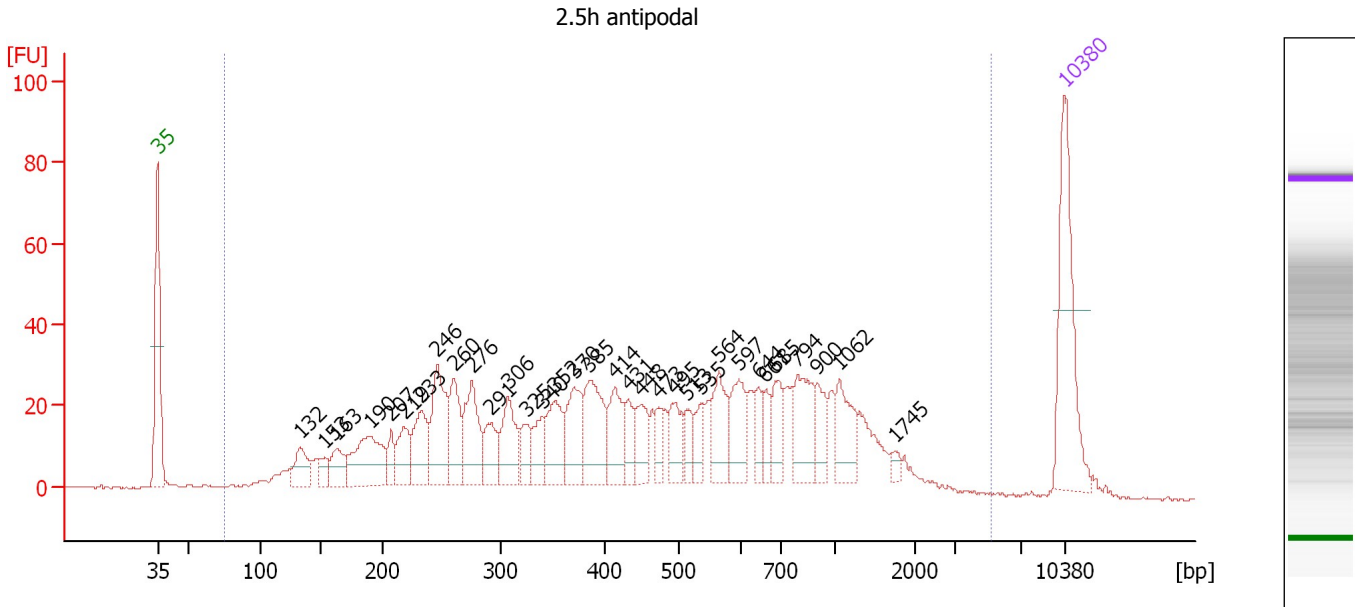
Region table for sample 8 : 0d+ antipodal

From [bp]	To [bp]	Average Size [bp]	Molarity [pmol/l]	Conc. [pg/µl]	Corr. Area	% of Total	Size distribution in CV [%]	Color
78	5,234	575	5,650.3	1,179.48	1,660.4	98	80.8	

Assay Class: High Sensitivity DNA Assay
 Data Path: C:\...ents and Settings\Bioanalyzer\2013-06-24\2013-06-24_007.xad

Created: 6/24/2013 4:27:02 PM
 Modified: 6/24/2013 5:09:00 PM

Electropherogram Summary Continued ...



Overall Results for sample 9 : 2.5h antipodal

Number of peaks found: 33 Corr. Area 1: 1,260.1
 Noise: 0.2

Peak table for sample 9 : 2.5h antipodal

Peak	Size [bp]	Conc. [pg/μl]	Molarity [pmol/l]	Observations
1	35	125.00	5,411.3	Lower Marker
2	132	31.76	363.9	
3	153	12.55	124.1	
4	163	26.89	250.1	
5	190	68.59	547.5	
6	207	15.01	109.8	
7	219	31.91	221.2	
8	233	43.22	281.3	
9	246	67.61	416.2	
10	260	43.23	251.6	
11	276	56.17	308.8	
12	291	29.25	152.1	
13	306	41.68	206.1	
14	325	19.45	90.7	
15	340	23.23	103.7	
16	352	40.25	173.3	
17	370	44.35	181.4	
18	385	57.93	228.0	
19	414	37.52	137.4	
20	431	20.58	72.3	
21	448	24.73	83.7	
22	473	13.56	43.4	
23	495	24.02	73.5	
24	513	14.38	42.5	
25	535	16.50	46.8	
26	564	38.61	103.7	

Assay Class: High Sensitivity DNA Assay
 Data Path: C:\...ents and Settings\Bioanalyzer\2013-06-24\2013-06-24_007.xad


Created: 6/24/2013 4:27:02 PM
 Modified: 6/24/2013 5:09:00 PM

Electropherogram Summary Continued ...

... Peak table for sample 9 : 2.5h antipodal

Peak	Size [bp]	Conc. [pg/µl]	Molarity [pmol/l]	Observations
27	597	32.90	83.5	
28	644	14.30	33.7	
29	661	13.94	31.9	
30	685	25.24	55.9	
31	794	40.88	78.0	
32	900	21.40	36.0	
33	1,062	31.95	45.6	
34	1,745	4.92	4.3	
35	▶ 10,380	75.00	10.9	Upper Marker

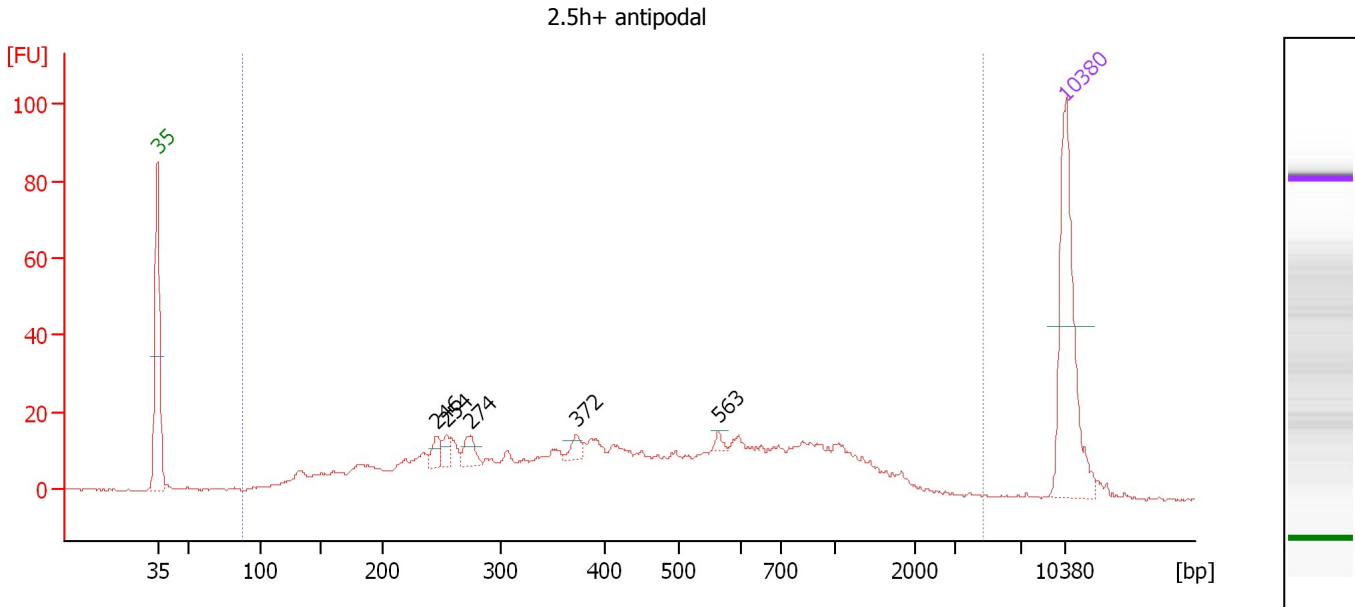
Region table for sample 9 : 2.5h antipodal

From [bp]	To [bp]	Average Size [bp]	Molarity [pmol/l]	Conc. [pg/µl]	Corr. Area	% of Total	Size distribution in CV [%]	Color
75	5,095	574	6,201.5	1,318.48	1,260.1	99	76.7	

Assay Class: High Sensitivity DNA Assay
 Data Path: C:\...ents and Settings\Bioanalyzer\2013-06-24\2013-06-24_007.xad

Created: 6/24/2013 4:27:02 PM
 Modified: 6/24/2013 5:09:00 PM

Electropherogram Summary Continued ...



Overall Results for sample 10 : 2.5h+ antipodal

Number of peaks found: 5 Corr. Area 1: 642.8
 Noise: 0.2

Peak table for sample 10 : 2.5h+ antipodal

Peak	Size [bp]	Conc. [pg/μl]	Molarity [pmol/l]	Observations
1	35	125.00	5,411.3	Lower Marker
2	246	10.49	64.6	
3	254	8.71	51.9	
4	274	12.82	70.9	
5	372	7.11	28.9	
6	563	3.24	8.7	
7	10,380	75.00	10.9	Upper Marker

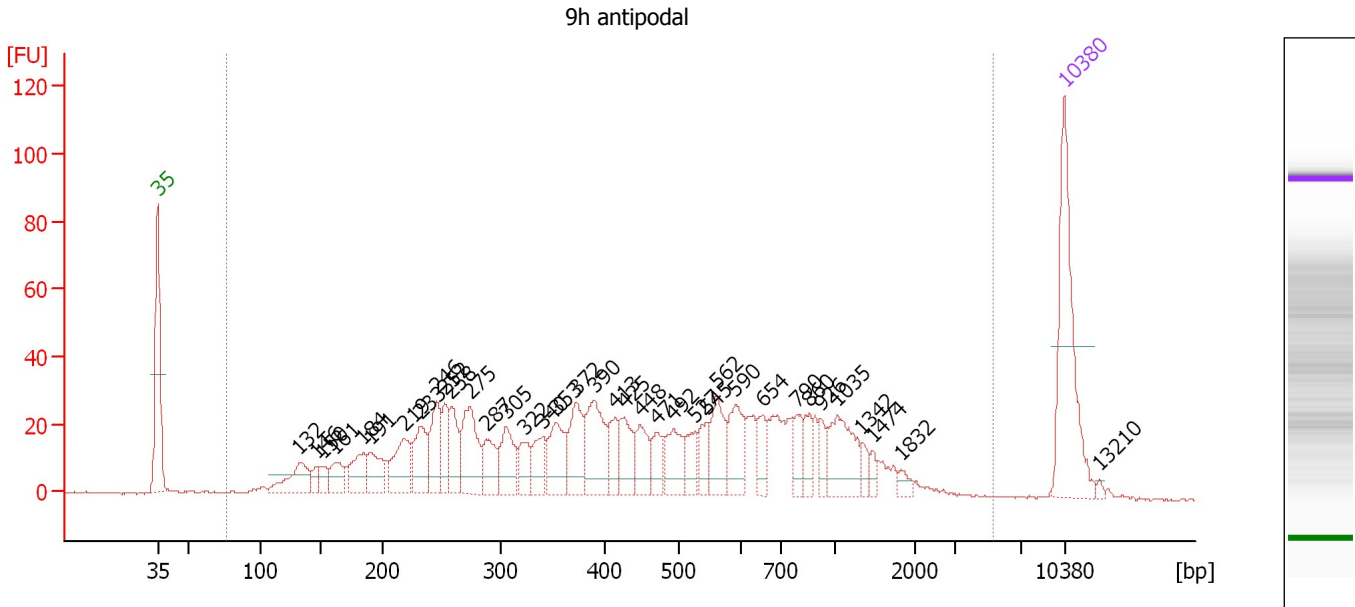
Region table for sample 10 : 2.5h+ antipodal

From [bp]	To [bp]	Average Size [bp]	Molarity [pmol/l]	Conc. [pg/μl]	Corr. Area	% of Total	Size distribution in CV [%]	Color
88	4,682	568	2,951.1	618.64	642.8	98	77.7	Blue

Assay Class: High Sensitivity DNA Assay
 Data Path: C:\...ents and Settings\Bioanalyzer\2013-06-24\2013-06-24_007.xad

Created: 6/24/2013 4:27:02 PM
 Modified: 6/24/2013 5:09:00 PM

Electropherogram Summary Continued ...



Overall Results for sample 11 : 9h antipodal

Number of peaks found: 37 Corr. Area 1: 1,178.3
 Noise: 0.2

Peak table for sample 11 : 9h antipodal

Peak	Size [bp]	Conc. [pg/μl]	Molarity [pmol/l]	Observations
1	35	125.00	5,411.3	Lower Marker
2	132	36.56	420.7	
3	146	9.32	97.0	
4	150	11.79	118.8	
5	161	18.90	178.4	
6	184	27.53	226.4	
7	191	25.88	205.8	
8	219	38.61	267.7	
9	233	35.90	233.5	
10	246	37.69	232.3	
11	252	23.74	142.6	
12	258	28.65	168.1	
13	275	51.92	286.6	
14	287	25.42	134.0	
15	305	33.84	168.2	
16	322	19.50	91.7	
17	340	22.11	98.5	
18	353	36.16	155.0	
19	372	39.15	159.4	
20	390	49.00	190.5	
21	413	18.57	68.2	
22	425	26.92	95.9	
23	448	23.68	80.0	
24	471	15.95	51.3	
25	492	29.55	91.0	
26	527	17.70	50.9	

Assay Class: High Sensitivity DNA Assay
 Data Path: C:\...ents and Settings\Bioanalyzer\2013-06-24\2013-06-24_007.xad


Created: 6/24/2013 4:27:02 PM
 Modified: 6/24/2013 5:09:00 PM

Electropherogram Summary Continued ...

... Peak table for sample 11 : 9h antipodal

Peak	Size [bp]	Conc. [pg/μl]	Molarity [pmol/l]	Observations
27	545	17.05	47.4	
28	562	30.95	83.4	
29	590	30.93	79.4	
30	654	15.85	36.7	
31	790	17.12	32.8	
32	860	13.14	23.2	
33	926	10.01	16.4	
34	1,035	39.57	57.9	
35	1,342	6.50	7.3	
36	1,474	4.96	5.1	
37	1,832	5.07	4.2	
38	10,380	75.00	10.9	Upper Marker
39	13,210	0.00	0.0	

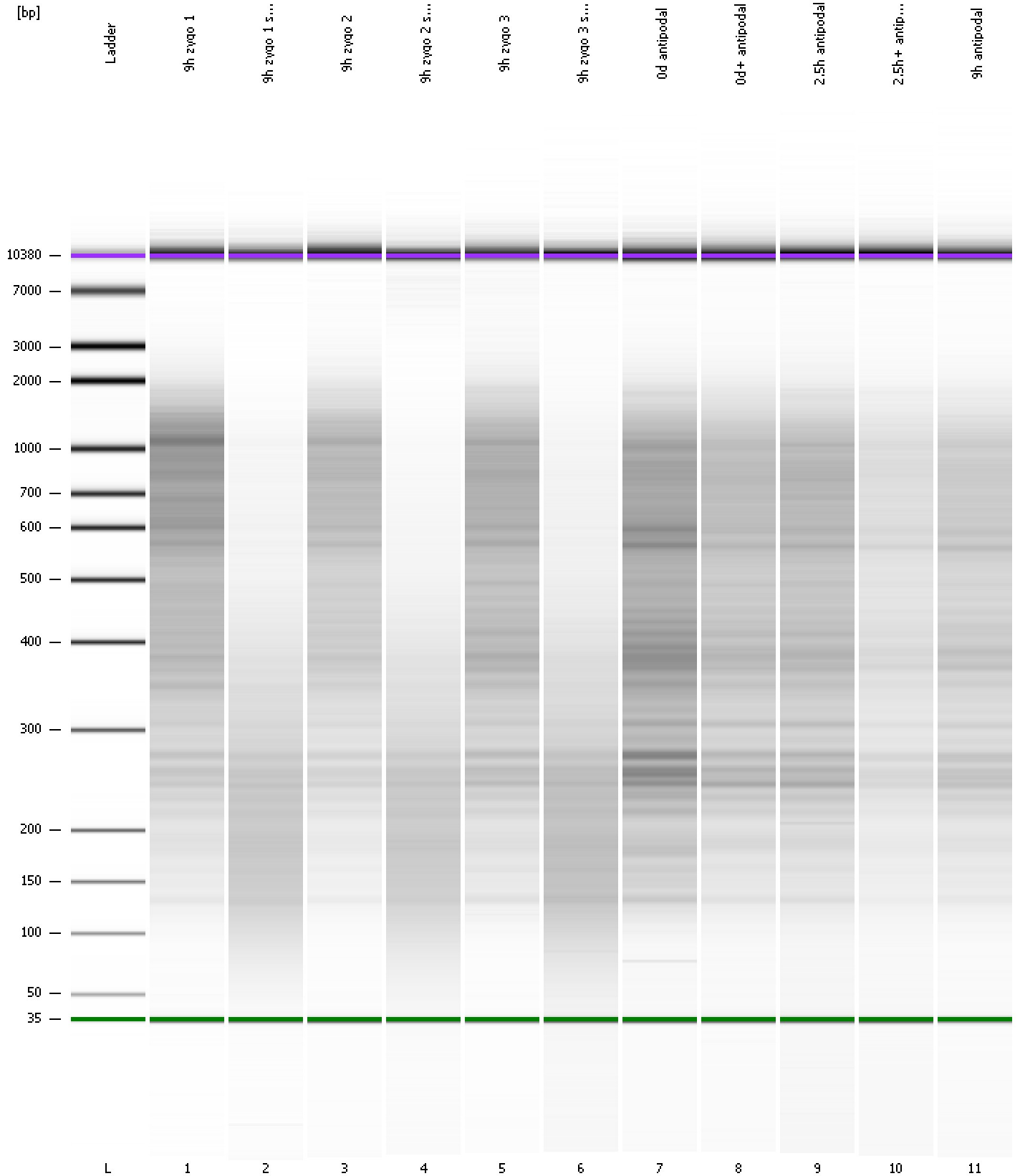
Region table for sample 11 : 9h antipodal

From [bp]	To [bp]	Average Size [bp]	Molarity [pmol/l]	Conc. [pg/μl]	Corr. Area	% of Total	Size distribution in CV [%]	Color
76	5,302	560	4,971.0	1,044.07	1,178.3	99	78.9	

Assay Class: High Sensitivity DNA Assay
Data Path: C:\...ents and Settings\Bioanalyzer\2013-06-24\2013-06-24_007.xad

Created: 6/24/2013 4:27:02 PM
Modified: 6/24/2013 5:09:00 PM

Gel Image

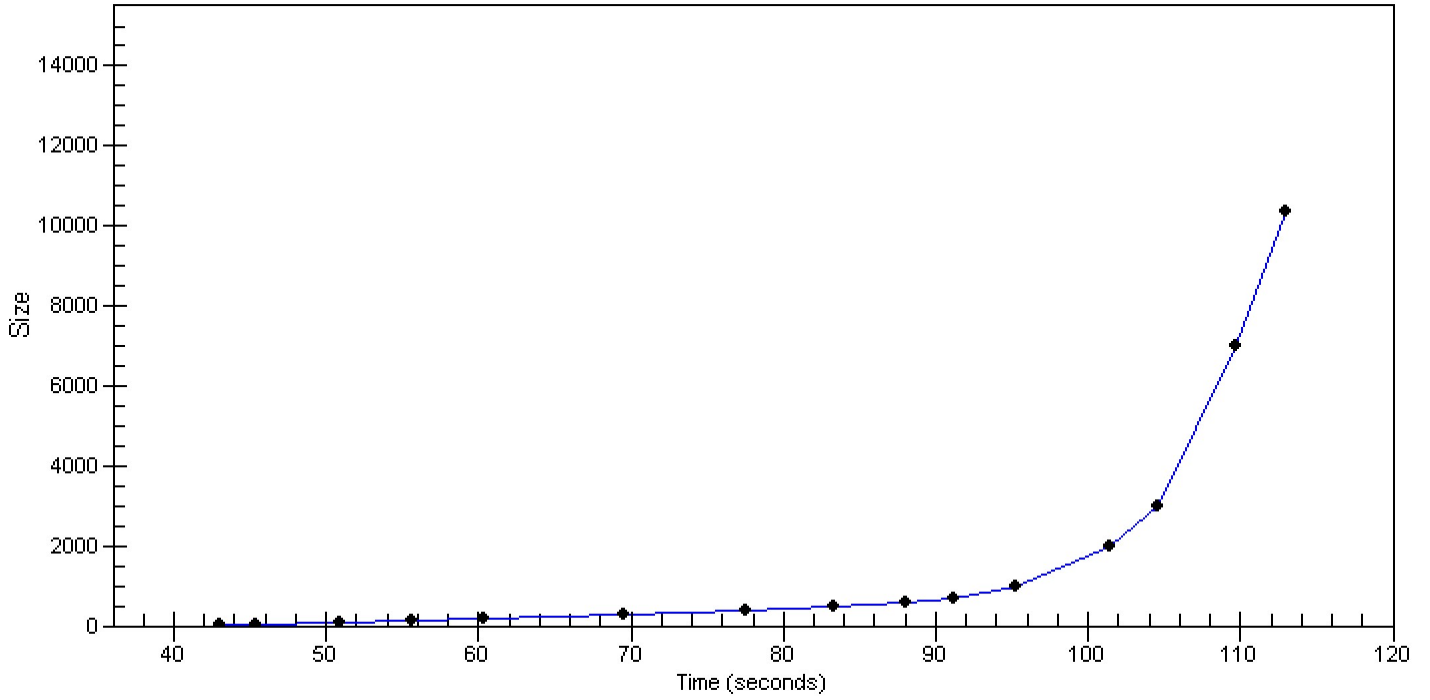


Assay Class: High Sensitivity DNA Assay
Data Path: C:\...ents and Settings\Bioanalyzer\2013-06-24\2013-06-24_007.xad

Created: 6/24/2013 4:27:02 PM
Modified: 6/24/2013 5:09:00 PM

Curves

Standard Curve



Assay Class: High Sensitivity DNA Assay
 Data Path: C:\...ents and Settings\Bioanalyzer\2013-06-24\2013-06-24_007.xad

Created: 6/24/2013 4:27:02 PM
 Modified: 6/24/2013 5:09:00 PM

Run Logbook

Description	Number	Source	Category	Sub Category	Time	Time Zone	User	Host
Run ended on port 1 (Number of wells acquired: 12)		Instrument	Run		6/24/2013 5:08:21 PM	(GMT --07:00) Pacific Standard Time	UC Davis	D8XSMGH1
Run started on port 1 (File: C:\Documents and Settings\Bioanalyzer\2013-06-24\2013-06-24_007.xad)		Instrument	Run		6/24/2013 4:27:07 PM	(GMT --07:00) Pacific Standard Time	UC Davis	D8XSMGH1
Product Number : G2938B		Instrument	Run		6/24/2013 4:27:07 PM	(GMT --07:00) Pacific Standard Time	UC Davis	D8XSMGH1
Name :		Instrument	Run		6/24/2013 4:27:07 PM	(GMT --07:00) Pacific Standard Time	UC Davis	D8XSMGH1
Vendor : Agilent Technologies		Instrument	Run		6/24/2013 4:27:07 PM	(GMT --07:00) Pacific Standard Time	UC Davis	D8XSMGH1
Serial# : DE13701086		Instrument	Run		6/24/2013 4:27:07 PM	(GMT --07:00) Pacific Standard Time	UC Davis	D8XSMGH1
Firmware : C.01.069		Instrument	Run		6/24/2013 4:27:07 PM	(GMT --07:00) Pacific Standard Time	UC Davis	D8XSMGH1
Cartridge : Electrode		Instrument	Run		6/24/2013 4:27:07 PM	(GMT --07:00) Pacific Standard Time	UC Davis	D8XSMGH1