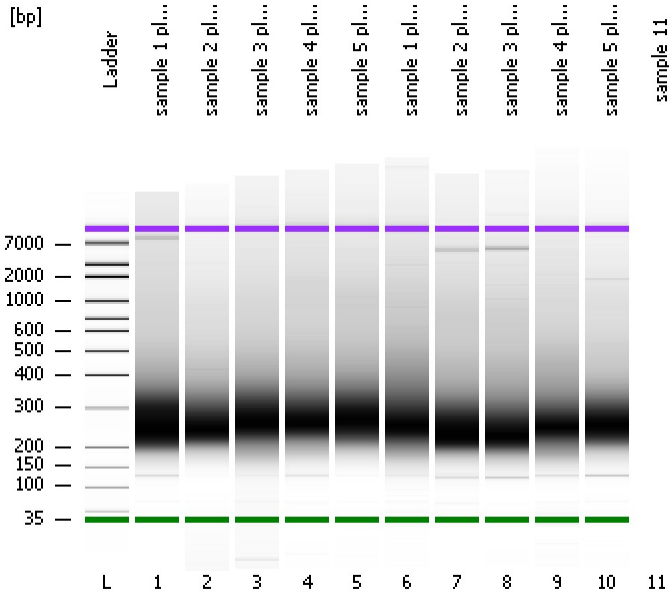


Assay Class: High Sensitivity DNA Assay
Data Path: C:\...ents and Settings\Bioanalyzer\2013-06-25\2013-06-25_003.xad

Created: 6/25/2013 1:25:14 PM
Modified: 6/25/2013 2:03:44 PM

Electrophoresis File Run Summary



Instrument Information:

Instrument Name: DE13701086 Firmware: C.01.069
Serial#: DE13701086 Type: G2938B

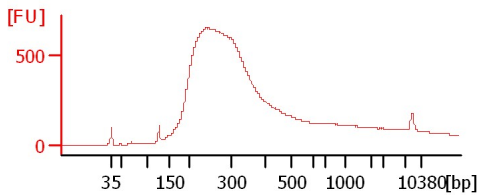
Assay Information:

Assay Origin Path: C:\Program Files\Agilent\2100 bioanalyzer\2100 expert\assays\dsDNA\High Sensitivity DNA.xsy
Assay Class: High Sensitivity DNA Assay
Version: 1.03
Assay Comments: Copyright © 2003-2010 Agilent Technologies

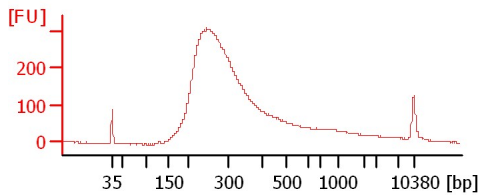
Chip Information:

Chip Lot #: Reagent Kit Lot #:
Chip Comments:

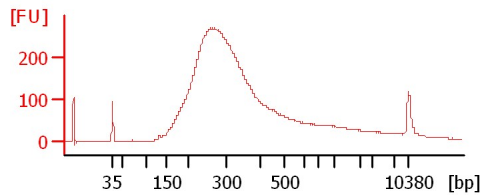
sample 1 plate1



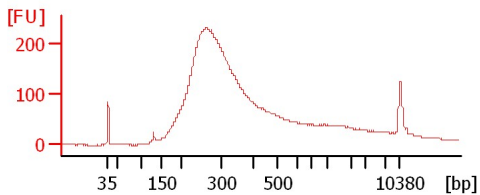
sample 2 plate1



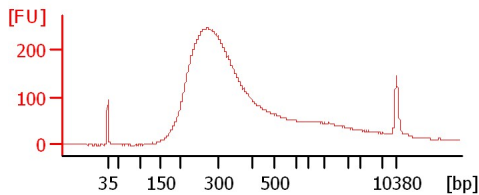
sample 3 plate1



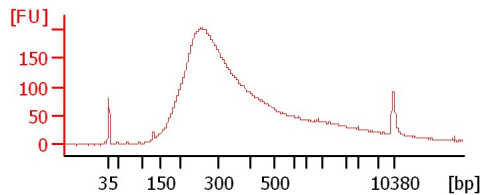
sample 4 plate1



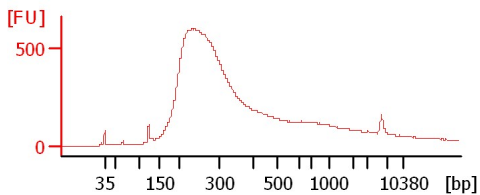
sample 5 plate1



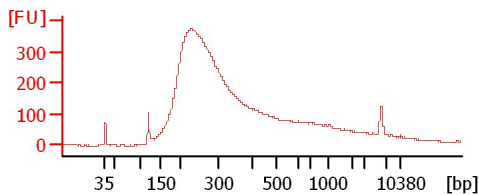
sample 1 plate2



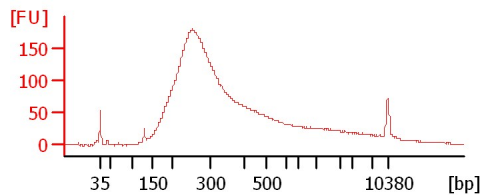
sample 2 plate2



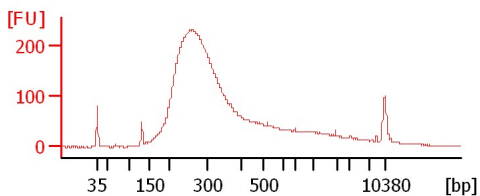
sample 3 plate2



sample 4 plate2



sample 5 plate2



Assay Class: High Sensitivity DNA Assay
Data Path: C:\...ents and Settings\Bioanalyzer\2013-06-25\2013-06-25_003.xad

Created: 6/25/2013 1:25:14 PM
Modified: 6/25/2013 2:03:44 PM

Electrophoresis File Run Summary (Chip Summary)

Sample Name	Sample Comment	Rest. Digest	Status	Observation	Result Label	Result Color
sample 1 plate1		<input type="checkbox"/>	✓			
sample 2 plate1		<input type="checkbox"/>	✓			
sample 3 plate1		<input type="checkbox"/>	✓			
sample 4 plate1		<input type="checkbox"/>	✓			
sample 5 plate1		<input type="checkbox"/>	✓			
sample 1 plate2		<input type="checkbox"/>	✓			
sample 2 plate2		<input type="checkbox"/>	✓			
sample 3 plate2		<input type="checkbox"/>	✓			
sample 4 plate2		<input type="checkbox"/>	✓			
sample 5 plate2		<input type="checkbox"/>	✓			
sample 11		<input type="checkbox"/>	✓			
Ladder		<input type="checkbox"/>	✓			

Chip Lot #

Reagent Kit Lot #

Chip Comments :

Assay Class: High Sensitivity DNA Assay
Data Path: C:\...ents and Settings\Bioanalyzer\2013-06-25\2013-06-25_003.xad

Created: 6/25/2013 1:25:14 PM
Modified: 6/25/2013 2:03:44 PM

Electrophoresis Assay Details

General Analysis Settings

Number of Available Sample and Ladder Wells (Max.) : 12
Minimum Visible Range [s] : 32
Maximum Visible Range [s] : 138
Start Analysis Time Range [s] : 33
End Analysis Time Range [s] : 137.5
Ladder Concentration [pg/μl] : 1950
Uses Standard Area for Ladder Fragments
Lower Marker Concentration [pg/μl] : 125
Upper Marker Concentration [pg/μl] : 75
Used Upper Marker for Quantitation
Standard Curve Fit is Point to Point
Show Data Aligned to Lower and Upper Marker

Integrator Settings

Integration Start Time [s] : 33.05
Integration End Time [s] : 137
Slope Threshold : 0.8
Height Threshold [FU] : 5
Area Threshold : 0.1
Width Threshold [s] : 0.6
Baseline Plateau [s] : 0.5

Filter Settings

Filter Width [s] : 0.5
Polynomial Order : 4

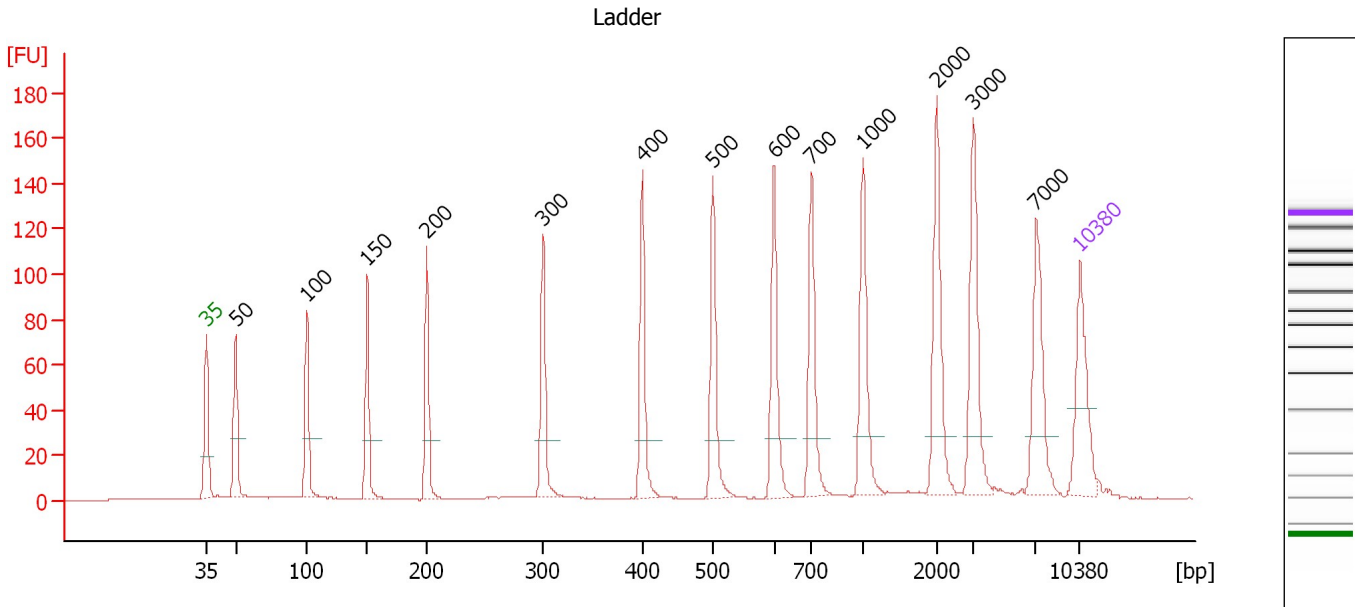
Ladder

Ladder Peak	Size	Area
1	35	160
2	50	210
3	100	208
4	150	221
5	200	242
6	300	270
7	400	305
8	500	306
9	600	336
10	700	321
11	1000	366
12	2000	413
13	3000	411
14	7000	400
15	10380	214

Assay Class: High Sensitivity DNA Assay
 Data Path: C:\...ents and Settings\Bioanalyzer\2013-06-25\2013-06-25_003.xad

Created: 6/25/2013 1:25:14 PM
 Modified: 6/25/2013 2:03:44 PM

Electropherogram Summary



Overall Results for Ladder

Noise: 0.2

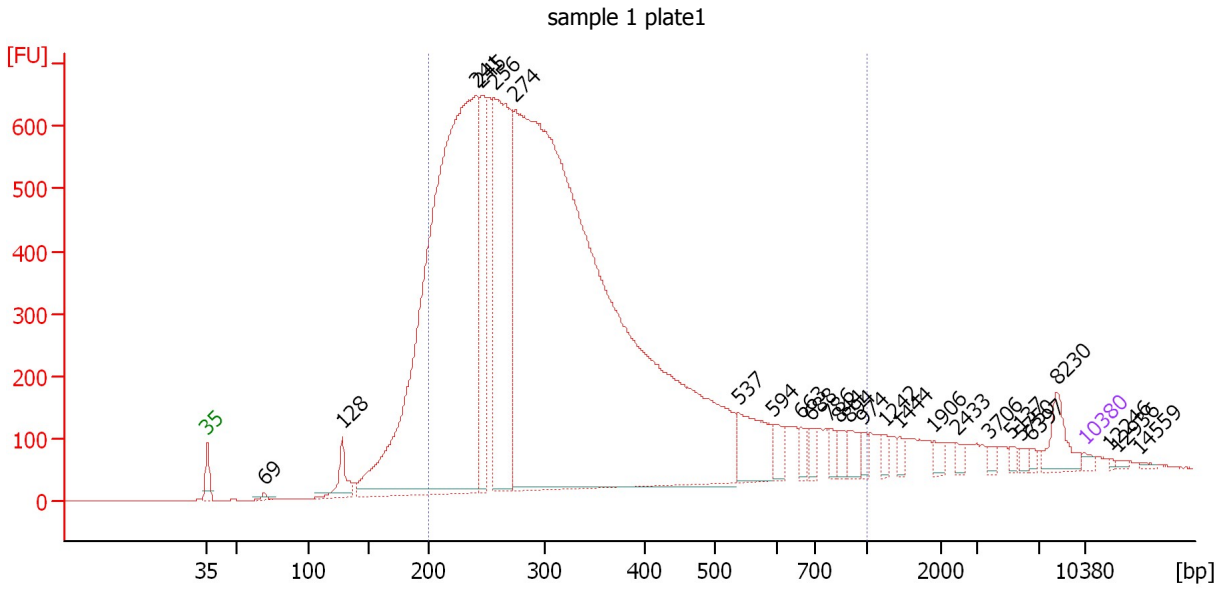
Peak table for Ladder

Peak	Size [bp]	Conc. [pg/μl]	Molarity [pmol/l]	Observations
1	35	125.00	5,411.3	Lower Marker
2	50	150.00	4,545.5	Ladder Peak
3	100	150.00	2,272.7	Ladder Peak
4	150	150.00	1,515.2	Ladder Peak
5	200	150.00	1,136.4	Ladder Peak
6	300	150.00	757.6	Ladder Peak
7	400	150.00	568.2	Ladder Peak
8	500	150.00	454.5	Ladder Peak
9	600	150.00	378.8	Ladder Peak
10	700	150.00	324.7	Ladder Peak
11	1,000	150.00	227.3	Ladder Peak
12	2,000	150.00	113.6	Ladder Peak
13	3,000	150.00	75.8	Ladder Peak
14	7,000	150.00	32.5	Ladder Peak
15	10,380	75.00	10.9	Upper Marker

Assay Class: High Sensitivity DNA Assay
 Data Path: C:\...ents and Settings\Bioanalyzer\2013-06-25\2013-06-25_003.xad

Created: 6/25/2013 1:25:14 PM
 Modified: 6/25/2013 2:03:44 PM

Electropherogram Summary Continued ...



Overall Results for sample 1 : sample 1 plate1

Number of peaks found: 26 Corr. Area 1: 15,719.3
 Noise: 0.2

Peak table for sample 1 : sample 1 plate1

Peak	Size [bp]	Conc. [pg/μl]	Molarity [pmol/l]	Observations
1	35	125.00	5,411.3	Lower Marker
2	69	79.65	1,742.5	
3	128	727.26	8,614.7	
4	241	24,321.88	152,974.5	
5	245	3,001.19	18,594.0	
6	256	7,943.68	47,018.7	
7	274	41,732.25	230,932.8	
8	537	1,328.56	3,749.7	
9	594	419.44	1,069.9	
10	663	249.91	571.3	
11	688	245.97	541.4	
12	786	199.34	384.4	
13	844	253.65	455.2	
14	894	313.13	530.9	
15	974	172.91	269.0	
16	1,242	141.54	172.7	
17	1,444	145.26	152.4	
18	1,906	163.66	130.1	
19	2,433	129.04	80.4	
20	3,706	105.76	43.2	
21	5,137	93.76	27.7	
22	5,750	98.95	26.1	
23	6,397	74.16	17.6	
24	8,230	532.16	98.0	
25	10,380	75.00	10.9	Upper Marker
26	12,246	0.00	0.0	


Assay Class: High Sensitivity DNA Assay
Data Path: C:\...ents and Settings\Bioanalyzer\2013-06-25\2013-06-25_003.xad

Created: 6/25/2013 1:25:14 PM
Modified: 6/25/2013 2:03:44 PM

Electropherogram Summary Continued ...**... Peak table for sample 1 : sample 1 plate1**

Peak	Size [bp]	Conc. [pg/ μ l]	Molarity [pmol/l]	Observations
27	12,936	0.00	0.0	
28	14,559	0.00	0.0	

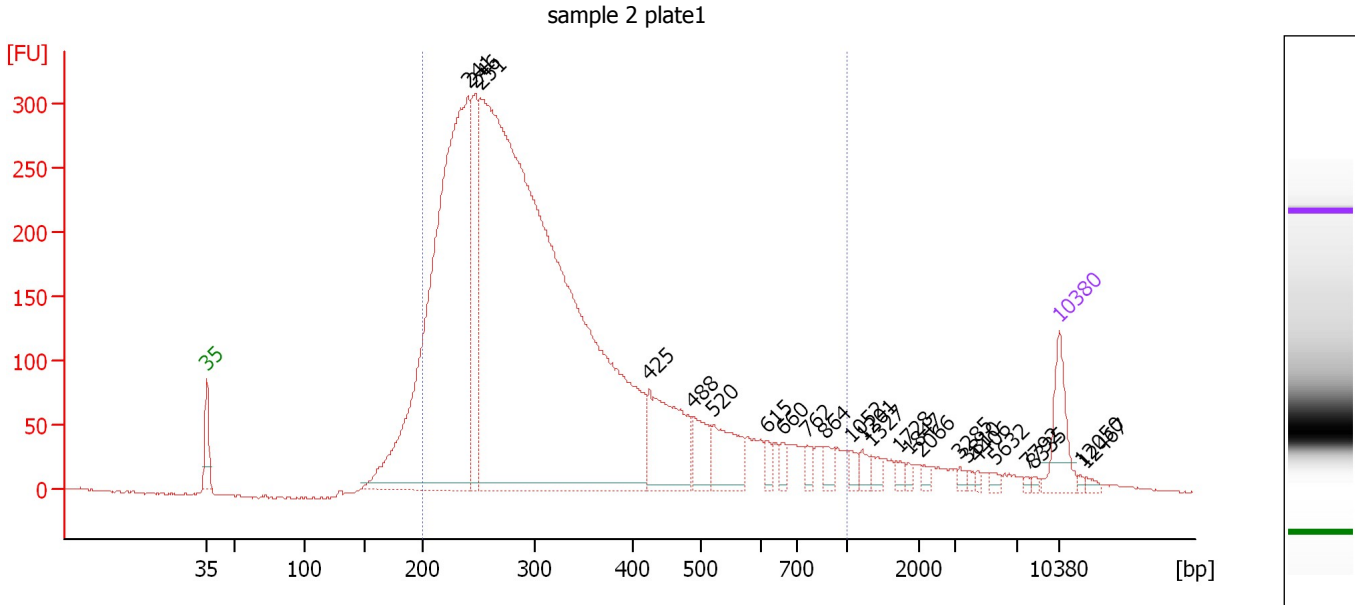
Region table for sample 1 : sample 1 plate1

From [bp]	To [bp]	Average Size [bp]	Molarity [pmol/l]	Conc. [pg/ μ l]	Corr. Area	% of Total	Size distribution in CV [%]	Color
200	1,000	336	368,326.6	70,849.05	15,719.3	87	40.3	

Assay Class: High Sensitivity DNA Assay
 Data Path: C:\...ents and Settings\Bioanalyzer\2013-06-25\2013-06-25_003.xad

Created: 6/25/2013 1:25:14 PM
 Modified: 6/25/2013 2:03:44 PM

Electropherogram Summary Continued ...



Overall Results for sample 2 : sample 2 plate1

Number of peaks found: 24 Corr. Area 1: 6,514.2
 Noise: 0.9

Peak table for sample 2 : sample 2 plate1

Peak	Size [bp]	Conc. [pg/μl]	Molarity [pmol/l]	Observations
1	35	125.00	5,411.3	Lower Marker
2	241	1,753.07	11,023.5	
3	246	305.42	1,880.2	
4	251	3,698.70	22,342.2	
5	425	249.05	888.3	
6	488	81.18	251.8	
7	520	120.96	352.6	
8	615	22.40	55.2	
9	660	19.13	43.9	
10	762	21.05	41.8	
11	864	25.17	44.1	
12	1,052	17.76	25.6	
13	1,201	18.39	23.2	
14	1,327	16.97	19.4	
15	1,728	11.11	9.7	
16	1,847	8.02	6.6	
17	2,066	9.07	6.7	
18	3,285	7.70	3.6	
19	3,810	5.58	2.2	
20	4,406	5.00	1.7	
21	5,632	7.80	2.1	
22	7,792	3.70	0.7	
23	8,335	3.97	0.7	
24	10,380	75.00	10.9	Upper Marker
25	12,050	0.00	0.0	
26	12,467	0.00	0.0	

Assay Class: High Sensitivity DNA Assay
Data Path: C:\...ents and Settings\Bioanalyzer\2013-06-25\2013-06-25_003.xad

Created: 6/25/2013 1:25:14 PM
Modified: 6/25/2013 2:03:44 PM

Electropherogram Summary Continued ...

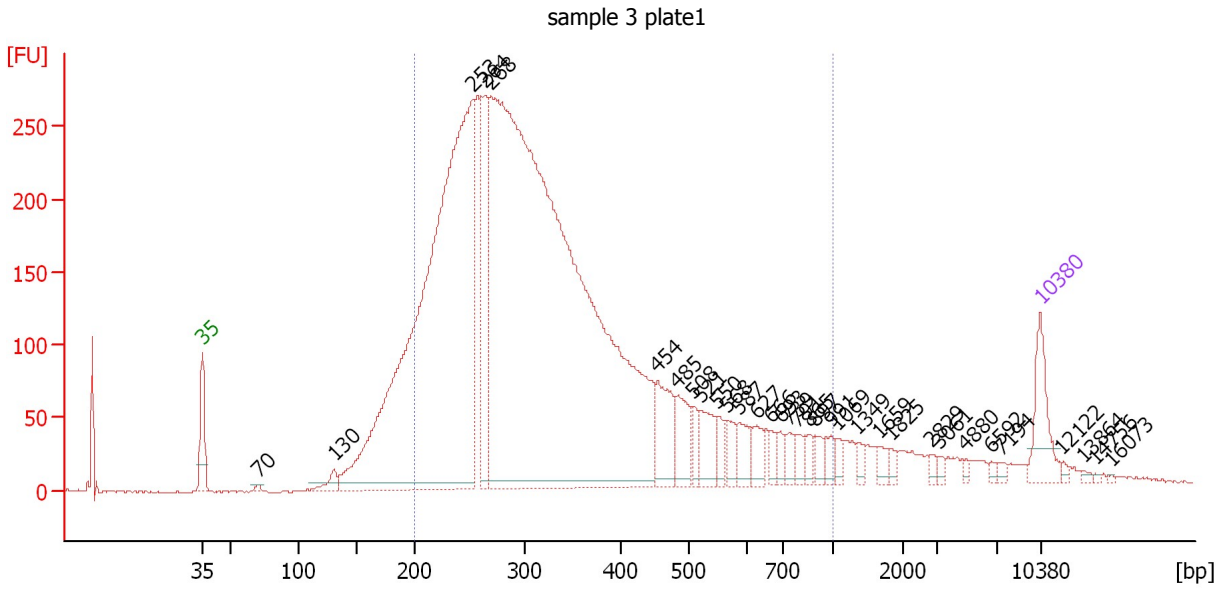
... Region table for sample 2 : sample 2 plate1

From [bp]	To [bp]	Average Size [bp]	Molarity [pmol/l]	Conc. [pg/μl]	Corr. Area	% of Total	Size distribution in CV [%]	Color
200	1,000	335	29,959.8	5,739.65	6,514.2	91	41.1	■

Assay Class: High Sensitivity DNA Assay
 Data Path: C:\...ents and Settings\Bioanalyzer\2013-06-25\2013-06-25_003.xad

Created: 6/25/2013 1:25:14 PM
 Modified: 6/25/2013 2:03:44 PM

Electropherogram Summary Continued ...



Overall Results for sample 3 : sample 3 plate1

Number of peaks found: 33 Corr. Area 1: 6,253.5
 Noise: 0.5

Peak table for sample 3 : sample 3 plate1

Peak	Size [bp]	Conc. [pg/μl]	Molarity [pmol/l]	Observations
1	35	125.00	5,411.3	Lower Marker
2	70	7.23	156.7	
3	130	30.88	360.1	
4	253	2,099.31	12,562.0	
5	264	239.59	1,374.0	
6	268	3,497.72	19,771.5	
7	454	118.36	394.6	
8	485	80.08	250.4	
9	508	31.79	94.9	
10	521	71.30	207.3	
11	550	33.81	93.1	
12	568	36.54	97.6	
13	587	38.71	100.0	
14	627	41.32	99.8	
15	666	20.68	47.1	
16	693	20.22	44.2	
17	739	24.85	50.9	
18	791	23.59	45.2	
19	865	18.56	32.5	
20	897	22.44	37.9	
21	991	23.11	35.3	
22	1,069	14.47	20.5	
23	1,349	13.25	14.9	
24	1,659	17.13	15.6	
25	1,825	8.85	7.3	
26	2,829	6.91	3.7	

Assay Class: High Sensitivity DNA Assay
 Data Path: C:\...ents and Settings\Bioanalyzer\2013-06-25\2013-06-25_003.xad

Created: 6/25/2013 1:25:14 PM
 Modified: 6/25/2013 2:03:44 PM

Electropherogram Summary Continued ...

... Peak table for sample 3 : sample 3 plate1

Peak	Size [bp]	Conc. [pg/μl]	Molarity [pmol/l]	Observations
27	3,061	8.05	4.0	
28	4,880	5.66	1.8	
29	6,592	5.69	1.3	
30	7,194	7.29	1.5	
31	10,380	75.00	10.9	Upper Marker
32	12,122	0.00	0.0	
33	13,864	0.00	0.0	
34	14,756	0.00	0.0	
35	16,073	0.00	0.0	

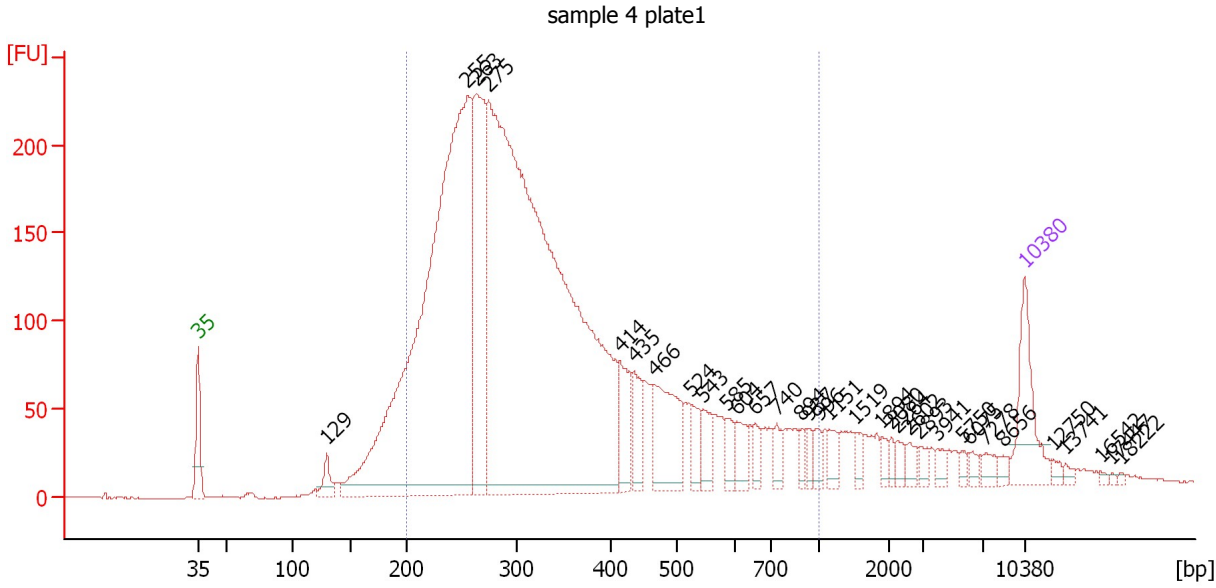
Region table for sample 3 : sample 3 plate1

From [bp]	To [bp]	Average Size [bp]	Molarity [pmol/l]	Conc. [pg/μl]	Corr. Area	% of Total	Size distribution in CV [%]	Color
200	1,000	345	29,417.8	5,809.73	6,253.5	86	40.0	

Assay Class: High Sensitivity DNA Assay
 Data Path: C:\...ents and Settings\Bioanalyzer\2013-06-25\2013-06-25_003.xad

Created: 6/25/2013 1:25:14 PM
 Modified: 6/25/2013 2:03:44 PM

Electropherogram Summary Continued ...



Overall Results for sample 4 : sample 4 plate1

Number of peaks found: 33 Corr. Area 1: 5,018.9
 Noise: 0.5

Peak table for sample 4 : sample 4 plate1

Peak	Size [bp]	Conc. [pg/μl]	Molarity [pmol/l]	Observations
1	35	125.00	5,411.3	Lower Marker
2	129	32.80	384.6	
3	255	1,437.25	8,533.0	
4	263	379.41	2,182.0	
5	275	2,019.67	11,143.2	
6	414	75.85	277.4	
7	435	55.58	193.5	
8	466	136.32	442.8	
9	524	38.90	112.5	
10	543	36.90	102.9	
11	585	24.04	62.3	
12	604	35.38	88.8	
13	657	22.73	52.4	
14	740	21.40	43.8	
15	894	13.76	23.3	
16	937	13.41	21.7	
17	996	15.88	24.2	
18	1,151	17.79	23.4	
19	1,519	14.12	14.1	
20	1,894	10.41	8.3	
21	2,080	8.61	6.3	
22	2,264	11.79	7.9	
23	2,602	12.20	7.1	
24	2,893	10.78	5.6	
25	3,941	10.47	4.0	
26	5,750	6.92	1.8	

Assay Class: High Sensitivity DNA Assay
 Data Path: C:\...ents and Settings\Bioanalyzer\2013-06-25\2013-06-25_003.xad

Created: 6/25/2013 1:25:14 PM
 Modified: 6/25/2013 2:03:44 PM

Electropherogram Summary Continued ...

... Peak table for sample 4 : sample 4 plate1

Peak	Size [bp]	Conc. [pg/µl]	Molarity [pmol/l]	Observations
27	6,075	9.17	2.3	
28	7,278	12.76	2.7	
29	8,656	8.12	1.4	
30	10,380	75.00	10.9	Upper Marker
31	12,750	0.00	0.0	
32	13,741	0.00	0.0	
33	16,542	0.00	0.0	
34	17,447	0.00	0.0	
35	18,222	0.00	0.0	

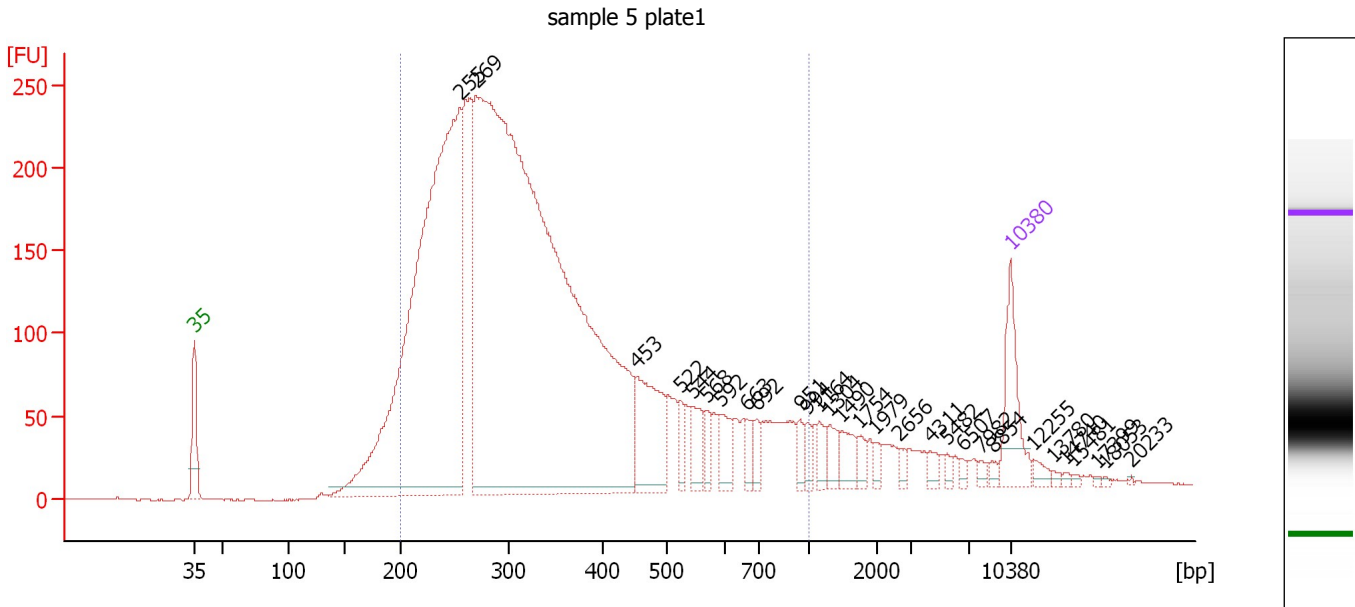
Region table for sample 4 : sample 4 plate1

From [bp]	To [bp]	Average Size [bp]	Molarity [pmol/l]	Conc. [pg/µl]	Corr. Area	% of Total	Size distribution in CV [%]	Color
200	1,000	353	20,184.1	4,035.73	5,018.9	87	41.1	

Assay Class: High Sensitivity DNA Assay
 Data Path: C:\...ents and Settings\Bioanalyzer\2013-06-25\2013-06-25_003.xad

Created: 6/25/2013 1:25:14 PM
 Modified: 6/25/2013 2:03:44 PM

Electropherogram Summary Continued ...



Overall Results for sample 5 : sample 5 plate1

Number of peaks found: 29 Corr. Area 1: 5,751.2
 Noise: 0.6

Peak table for sample 5 : sample 5 plate1

Peak	Size [bp]	Conc. [pg/μl]	Molarity [pmol/l]	Observations
1	35	125.00	5,411.3	Lower Marker
2	255	1,453.56	8,648.7	
3	269	2,754.35	15,492.1	
4	453	160.65	536.8	
5	522	27.36	79.4	
6	544	43.49	121.0	
7	568	24.56	65.6	
8	592	44.30	113.4	
9	663	22.37	51.1	
10	692	20.85	45.7	
11	951	18.74	29.9	
12	994	16.58	25.3	
13	1,164	21.49	28.0	
14	1,304	23.82	27.7	
15	1,490	28.90	29.4	
16	1,754	15.90	13.7	
17	1,979	8.91	6.8	
18	2,656	9.29	5.3	
19	4,311	11.30	4.0	
20	5,482	6.59	1.8	
21	6,507	5.35	1.2	
22	7,982	6.11	1.2	
23	8,854	6.09	1.0	
24	10,380	75.00	10.9	Upper Marker
25	12,255	0.00	0.0	
26	13,780	0.00	0.0	

Assay Class: High Sensitivity DNA Assay
 Data Path: C:\...ents and Settings\Bioanalyzer\2013-06-25\2013-06-25_003.xad


Created: 6/25/2013 1:25:14 PM
 Modified: 6/25/2013 2:03:44 PM

Electropherogram Summary Continued ...

... Peak table for sample 5 : sample 5 plate1

Peak	Size [bp]	Conc. [pg/μl]	Molarity [pmol/l]	Observations
27	14,740	0.00	0.0	
28	15,481	0.00	0.0	
29	17,399	0.00	0.0	
30	18,053	0.00	0.0	
31	20,233	0.00	0.0	

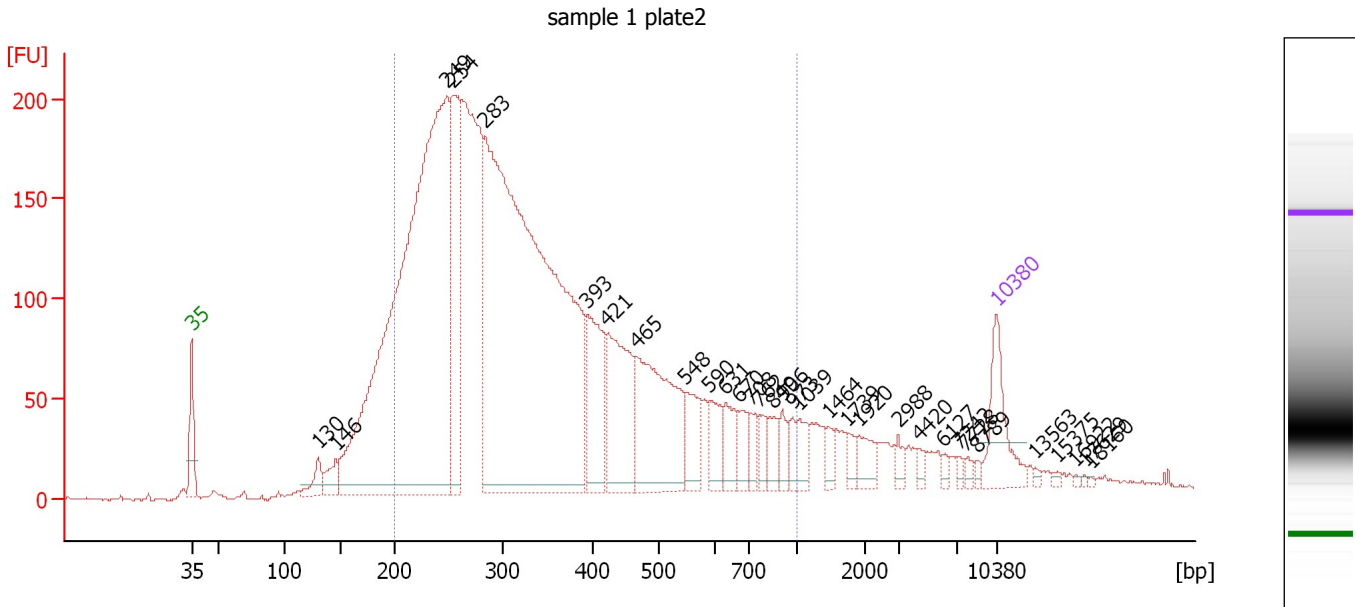
Region table for sample 5 : sample 5 plate1

From [bp]	To [bp]	Average Size [bp]	Molarity [pmol/l]	Conc. [pg/μl]	Corr. Area	% of Total	Size distribution in CV [%]	Color
200	1,000	357	22,839.8	4,588.14	5,751.2	88	41.6	

Assay Class: High Sensitivity DNA Assay
 Data Path: C:\...ents and Settings\Bioanalyzer\2013-06-25\2013-06-25_003.xad

Created: 6/25/2013 1:25:14 PM
 Modified: 6/25/2013 2:03:44 PM

Electropherogram Summary Continued ...



Overall Results for sample 6 : sample 1 plate2

Number of peaks found: 32 Corr. Area 1: 4,956.1
 Noise: 0.6

Peak table for sample 6 : sample 1 plate2

Peak	Size [bp]	Conc. [pg/μl]	Molarity [pmol/l]	Observations
1	35	125.00	5,411.3	Lower Marker
2	130	40.50	471.3	
3	146	44.35	460.1	
4	249	1,713.34	10,442.9	
5	254	292.02	1,741.5	
6	283	1,769.65	9,459.7	
7	393	173.84	670.8	
8	421	202.34	728.4	
9	465	283.93	924.6	
10	548	72.25	199.8	
11	590	52.34	134.3	
12	631	49.17	118.1	
13	670	33.13	75.0	
14	708	28.61	61.2	
15	762	25.36	50.5	
16	849	30.84	55.1	
17	906	27.00	45.2	
18	973	17.17	26.7	
19	1,039	30.21	44.0	
20	1,464	16.80	17.4	
21	1,739	15.98	13.9	
22	1,920	30.73	24.3	
23	2,988	13.48	6.8	
24	4,420	8.16	2.8	
25	6,127	7.00	1.7	
26	7,242	5.91	1.2	

Assay Class: High Sensitivity DNA Assay
 Data Path: C:\...ents and Settings\Bioanalyzer\2013-06-25\2013-06-25_003.xad

Created: 6/25/2013 1:25:14 PM
 Modified: 6/25/2013 2:03:44 PM

Electropherogram Summary Continued ...

... Peak table for sample 6 : sample 1 plate2

Peak	Size [bp]	Conc. [pg/μl]	Molarity [pmol/l]	Observations
27	7,728	7.41	1.5	
28	8,789	4.89	0.8	
29	10,380	75.00	10.9	Upper Marker
30	13,563	0.00	0.0	
31	15,375	0.00	0.0	
32	16,922	0.00	0.0	
33	17,629	0.00	0.0	
34	18,160	0.00	0.0	

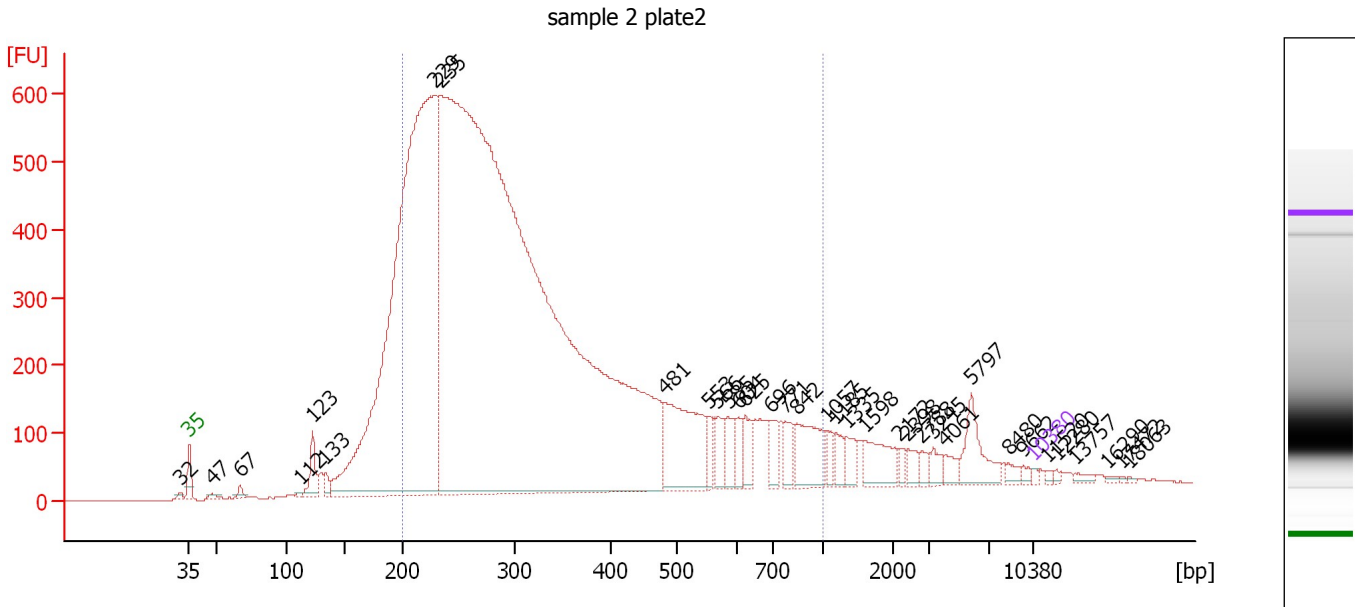
Region table for sample 6 : sample 1 plate2

From [bp]	To [bp]	Average Size [bp]	Molarity [pmol/l]	Conc. [pg/μl]	Corr. Area	% of Total	Size distribution in CV [%]	Color
200	1,000	362	24,375.8	4,897.83	4,956.1	83	42.2	

Assay Class: High Sensitivity DNA Assay
 Data Path: C:\...ents and Settings\Bioanalyzer\2013-06-25\2013-06-25_003.xad

Created: 6/25/2013 1:25:14 PM
 Modified: 6/25/2013 2:03:44 PM

Electropherogram Summary Continued ...



Overall Results for sample 7 : sample 2 plate2

Number of peaks found: 35 Corr. Area 1: 13,732.8
 Noise: 0.5

Peak table for sample 7 : sample 2 plate2

Peak	Size [bp]	Conc. [pg/μl]	Molarity [pmol/l]	Observations
1	32	0.00	0.0	
2	35	125.00	5,411.3	Lower Marker
3	47	132.96	4,297.6	
4	67	215.17	4,894.2	
5	112	67.94	917.1	
6	123	1,083.34	13,367.5	
7	133	356.33	4,048.9	
8	229	38,949.50	257,347.7	
9	235	93,432.83	603,562.8	
10	481	4,105.05	12,934.9	
11	553	585.60	1,604.9	
12	566	766.38	2,050.2	
13	585	739.62	1,914.7	
14	604	491.92	1,234.0	
15	625	719.39	1,744.8	
16	696	587.31	1,278.9	
17	771	645.63	1,268.7	
18	842	1,747.73	3,146.5	
19	1,057	349.18	500.5	
20	1,185	433.86	554.8	
21	1,335	456.31	517.9	
22	1,598	1,105.99	1,048.7	
23	2,172	197.76	137.9	
24	2,398	330.68	209.0	
25	2,788	234.04	127.2	
26	3,245	309.25	144.4	

Assay Class: High Sensitivity DNA Assay
 Data Path: C:\...ents and Settings\Bioanalyzer\2013-06-25\2013-06-25_003.xad


Created: 6/25/2013 1:25:14 PM
 Modified: 6/25/2013 2:03:44 PM

Electropherogram Summary Continued ...

... Peak table for sample 7 : sample 2 plate2

Peak	Size [bp]	Conc. [pg/μl]	Molarity [pmol/l]	Observations
27	4,061	313.93	117.1	
28	5,797	1,153.31	301.4	
29	8,480	178.32	31.9	
30	9,662	108.45	17.0	
31	10,380	75.00	10.9	Upper Marker
32	11,520	0.00	0.0	
33	12,280	0.00	0.0	
34	13,757	0.00	0.0	
35	16,290	0.00	0.0	
36	17,472	0.00	0.0	
37	18,063	0.00	0.0	

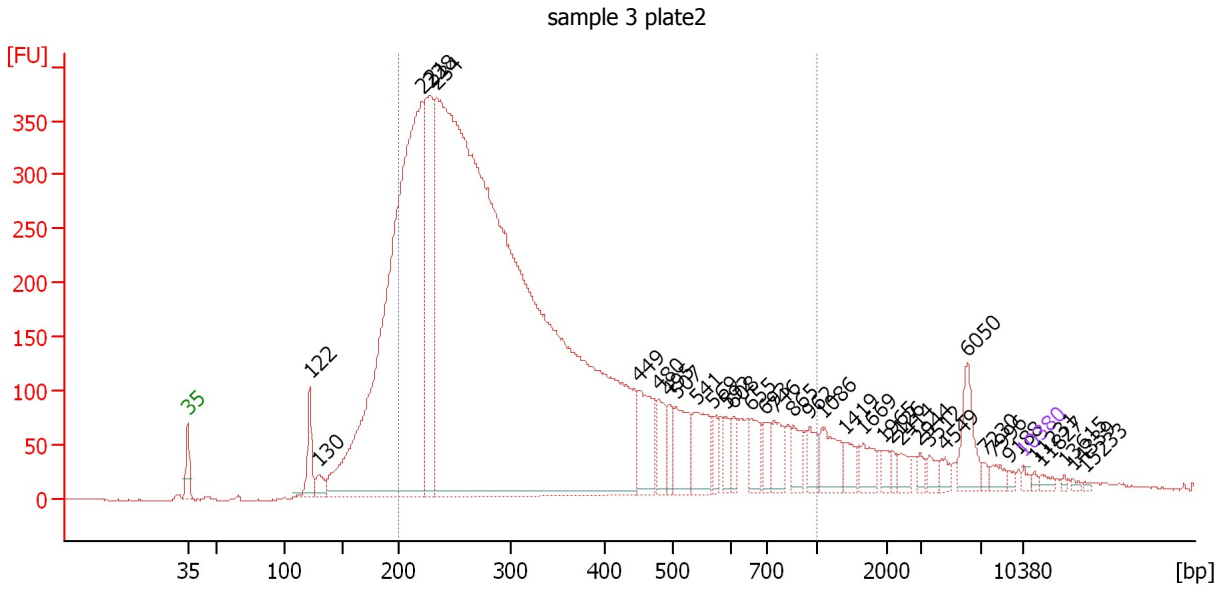
Region table for sample 7 : sample 2 plate2

From [bp]	To [bp]	Average Size [bp]	Molarity [pmol/l]	Conc. [pg/μl]	Corr. Area	% of Total	Size distribution in CV [%]	Color
200	1,000	344	616,262.5	117,520.01	13,732.8	83	44.4	

Assay Class: High Sensitivity DNA Assay
 Data Path: C:\...ents and Settings\Bioanalyzer\2013-06-25\2013-06-25_003.xad

Created: 6/25/2013 1:25:14 PM
 Modified: 6/25/2013 2:03:44 PM

Electropherogram Summary Continued ...



Overall Results for sample 8 : sample 3 plate2

Number of peaks found: 36 Corr. Area 1: 8,344.8
 Noise: 0.8

Peak table for sample 8 : sample 3 plate2

Peak	Size [bp]	Conc. [pg/μl]	Molarity [pmol/l]	Observations
1	35	125.00	5,411.3	Lower Marker
2	122	996.90	12,351.6	
3	130	374.87	4,364.1	
4	221	21,032.97	144,156.6	
5	228	5,237.59	34,839.7	
6	234	54,439.52	353,201.5	
7	449	1,400.03	4,719.8	
8	480	711.99	2,249.6	
9	495	460.70	1,409.1	
10	507	1,118.13	3,344.8	
11	541	1,104.30	3,092.5	
12	569	360.47	959.5	
13	592	342.23	876.0	
14	608	363.03	905.2	
15	655	628.64	1,453.2	
16	693	391.18	855.5	
17	746	609.63	1,238.5	
18	865	421.29	737.6	
19	962	417.40	657.1	
20	1,086	752.39	1,049.6	
21	1,419	300.37	320.6	
22	1,669	367.22	333.3	
23	1,965	161.26	124.4	
24	2,126	135.15	96.3	
25	2,414	212.20	133.2	
26	2,944	144.38	74.3	

Assay Class: High Sensitivity DNA Assay
 Data Path: C:\...ents and Settings\Bioanalyzer\2013-06-25\2013-06-25_003.xad


Created: 6/25/2013 1:25:14 PM
 Modified: 6/25/2013 2:03:44 PM

Electropherogram Summary Continued ...

... Peak table for sample 8 : sample 3 plate2

Peak	Size [bp]	Conc. [pg/µl]	Molarity [pmol/l]	Observations
27	3,512	186.46	80.4	
28	4,549	163.54	54.5	
29	6,050	755.54	189.2	
30	7,230	81.01	17.0	
31	7,996	179.59	34.0	
32	9,188	68.16	11.2	
33	10,380	75.00	10.9	Upper Marker
34	11,231	0.00	0.0	
35	11,827	0.00	0.0	
36	13,615	0.00	0.0	
37	14,339	0.00	0.0	
38	15,233	0.00	0.0	

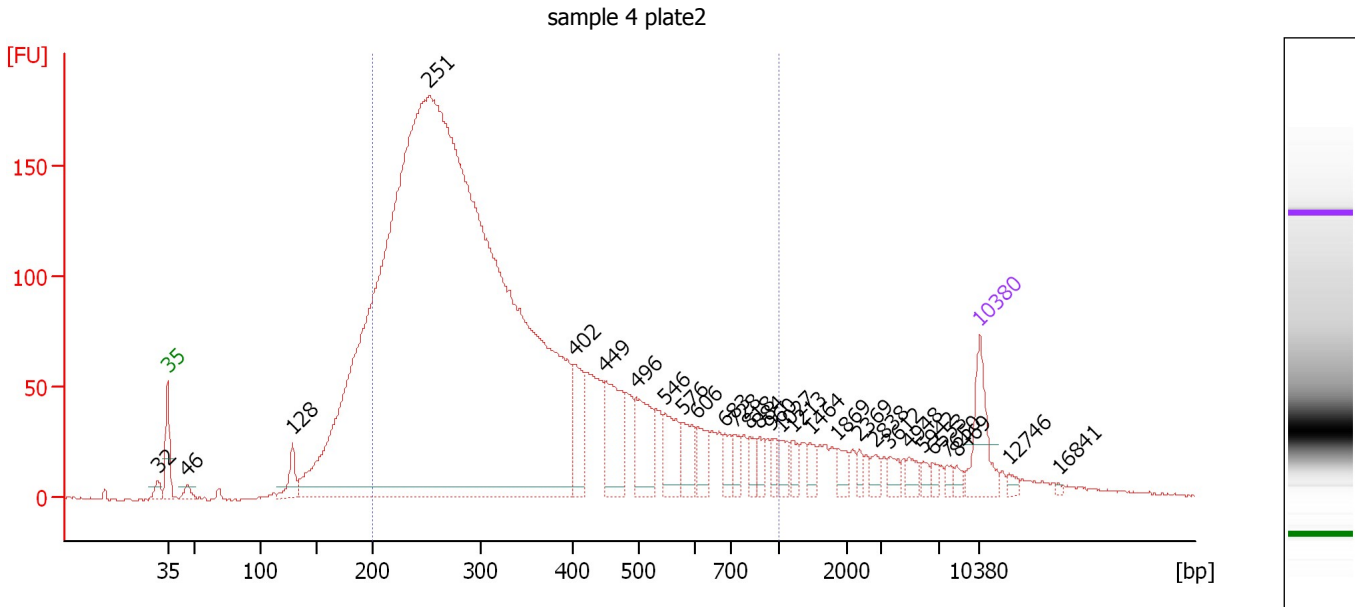
Region table for sample 8 : sample 3 plate2

From [bp]	To [bp]	Average Size [bp]	Molarity [pmol/l]	Conc. [pg/µl]	Corr. Area	% of Total	Size distribution in CV [%]	Color
200	1,000	349	376,548.3	72,116.23	8,344.8	81	44.9	

Assay Class: High Sensitivity DNA Assay
 Data Path: C:\...ents and Settings\Bioanalyzer\2013-06-25\2013-06-25_003.xad

Created: 6/25/2013 1:25:14 PM
 Modified: 6/25/2013 2:03:44 PM

Electropherogram Summary Continued ...



Overall Results for sample 9 : sample 4 plate2

Number of peaks found: 29 Corr. Area 1: 3,878.9
 Noise: 0.6

Peak table for sample 9 : sample 4 plate2

Peak	Size [bp]	Conc. [pg/μl]	Molarity [pmol/l]	Observations
1	32	0.00	0.0	
2	35	125.00	5,411.3	Lower Marker
3	46	16.97	563.2	
4	128	55.21	653.0	
5	251	5,492.81	33,094.0	
6	402	93.82	354.0	
7	449	138.67	468.0	
8	496	110.81	338.3	
9	546	74.22	205.8	
10	576	56.25	147.9	
11	606	47.07	117.7	
12	683	28.91	64.2	
13	728	24.64	51.3	
14	818	25.53	47.3	
15	884	19.80	34.0	
16	960	18.62	29.4	
17	1,027	25.83	38.1	
18	1,213	19.14	23.9	
19	1,464	18.59	19.2	
20	1,869	22.14	18.0	
21	2,369	11.66	7.5	
22	2,838	15.09	8.1	
23	3,612	17.90	7.5	
24	4,948	17.89	5.5	
25	5,942	11.79	3.0	
26	6,553	9.34	2.2	

Assay Class: High Sensitivity DNA Assay
 Data Path: C:\...ents and Settings\Bioanalyzer\2013-06-25\2013-06-25_003.xad

Created: 6/25/2013 1:25:14 PM
 Modified: 6/25/2013 2:03:44 PM

Electropherogram Summary Continued ...

... Peak table for sample 9 : sample 4 plate2

Peak	Size [bp]	Conc. [pg/μl]	Molarity [pmol/l]	Observations
27	7,650	9.18	1.8	
28	8,469	8.69	1.6	
29	10,380	75.00	10.9	Upper Marker
30	12,746	0.00	0.0	
31	16,841	0.00	0.0	

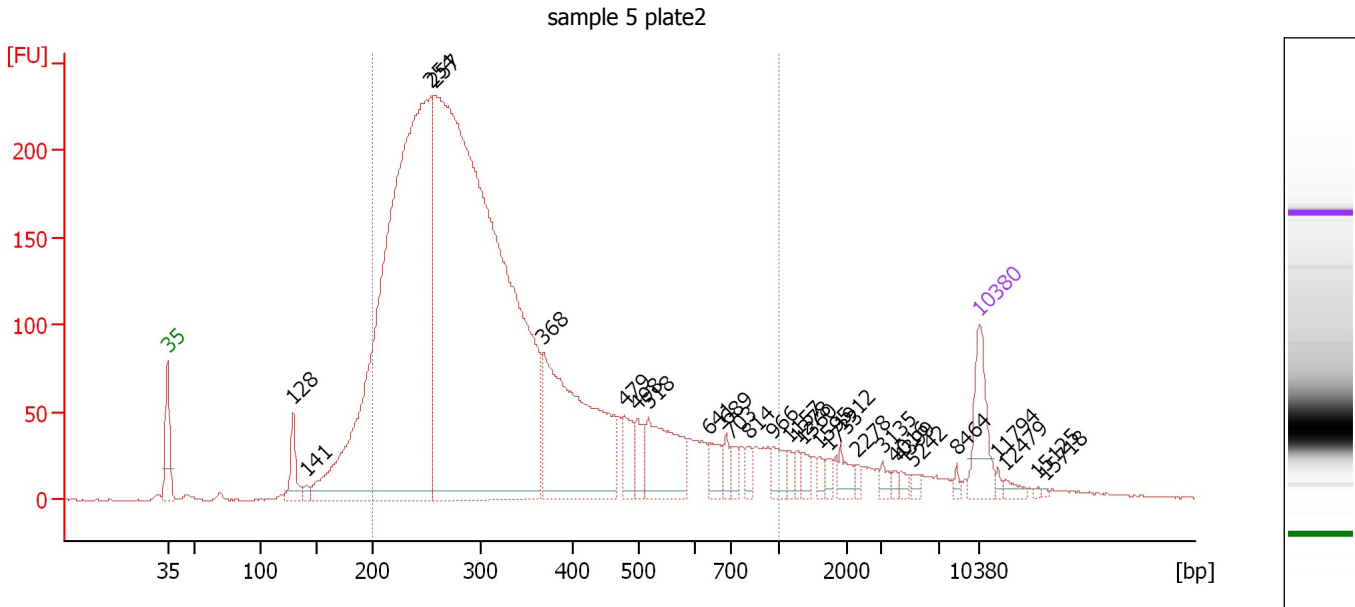
Region table for sample 9 : sample 4 plate2

From [bp]	To [bp]	Average Size [bp]	Molarity [pmol/l]	Conc. [pg/μl]	Corr. Area	% of Total	Size distribution in CV [%]	Color
200	1,000	352	28,381.3	5,576.28	3,878.9	82	42.7	

Assay Class: High Sensitivity DNA Assay
 Data Path: C:\...ents and Settings\Bioanalyzer\2013-06-25\2013-06-25_003.xad

Created: 6/25/2013 1:25:14 PM
 Modified: 6/25/2013 2:03:44 PM

Electropherogram Summary Continued ...



Overall Results for sample 10 : sample 5 plate2

Number of peaks found: 29 Corr. Area 1: 4,836.1
 Noise: 0.5

Peak table for sample 10 : sample 5 plate2

Peak	Size [bp]	Conc. [pg/μl]	Molarity [pmol/l]	Observations
1	35	125.00	5,411.3	Lower Marker
2	128	72.43	854.7	
3	141	12.53	134.8	
4	254	1,997.88	11,932.7	
5	257	2,645.83	15,581.8	
6	368	514.95	2,120.3	
7	479	56.64	179.2	
8	498	45.95	139.7	
9	518	160.36	469.5	
10	641	40.24	95.2	
11	689	20.28	44.6	
12	703	21.33	46.0	
13	814	18.55	34.5	
14	966	32.62	51.1	
15	1,157	14.92	19.5	
16	1,278	13.23	15.7	
17	1,360	16.08	17.9	
18	1,595	12.54	11.9	
19	1,733	10.36	9.1	
20	1,912	22.61	17.9	
21	2,278	8.96	6.0	
22	3,135	11.15	5.4	
23	4,016	6.97	2.6	
24	4,399	7.58	2.6	
25	5,242	7.42	2.1	
26	8,464	5.32	1.0	

Assay Class: High Sensitivity DNA Assay
 Data Path: C:\...ents and Settings\Bioanalyzer\2013-06-25\2013-06-25_003.xad


Created: 6/25/2013 1:25:14 PM
 Modified: 6/25/2013 2:03:44 PM

Electropherogram Summary Continued ...

... Peak table for sample 10 : sample 5 plate2

Peak	Size [bp]	Conc. [pg/μl]	Molarity [pmol/l]	Observations
27	10,380	75.00	10.9	Upper Marker
28	11,794	0.00	0.0	
29	12,479	0.00	0.0	
30	15,125	0.00	0.0	
31	15,718	0.00	0.0	

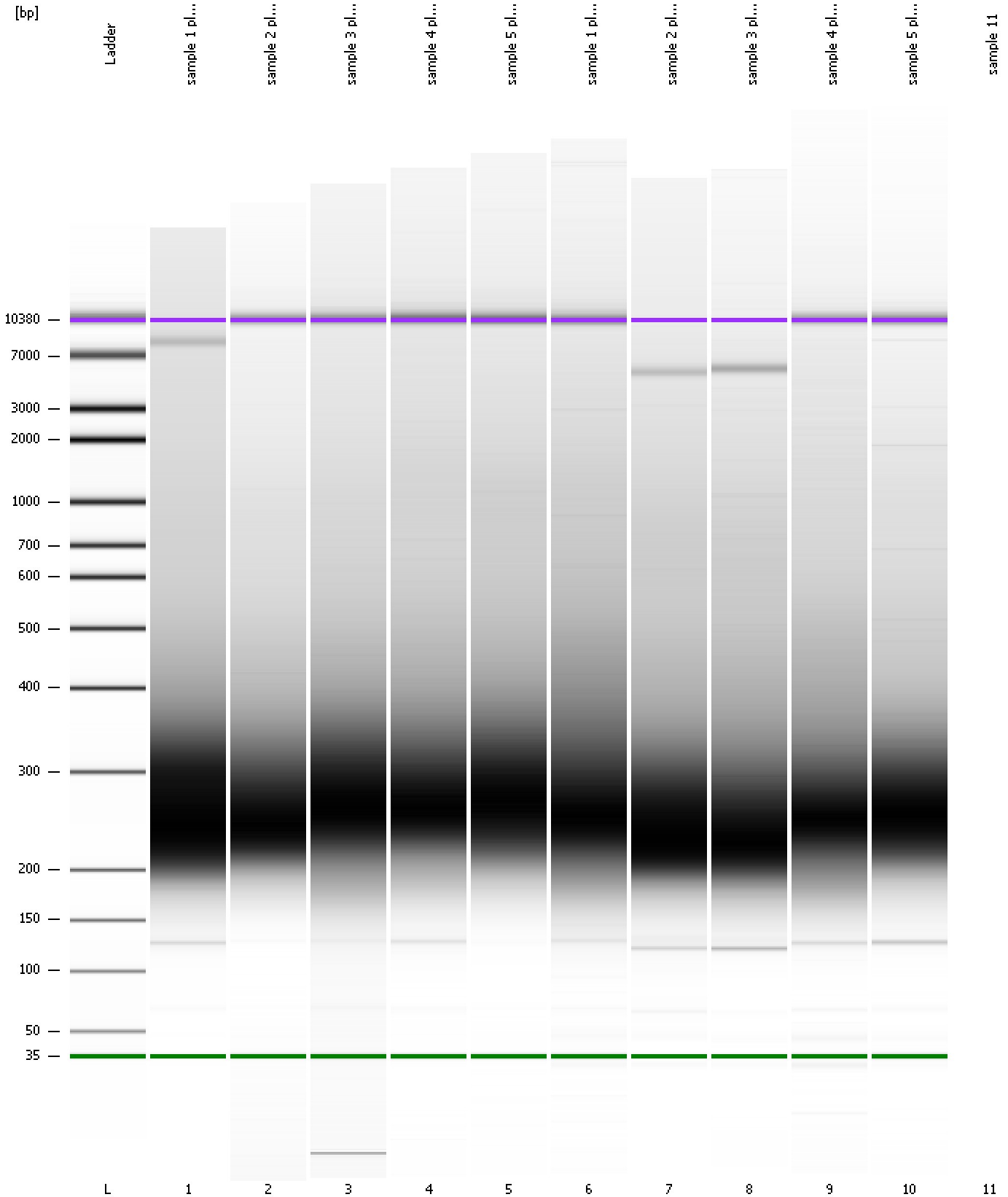
Region table for sample 10 : sample 5 plate2

From [bp]	To [bp]	Average Size [bp]	Molarity [pmol/l]	Conc. [pg/μl]	Corr. Area	% of Total	Size distribution in CV [%]	Color
200	1,000	341	26,814.5	5,183.33	4,836.1	87	42.1	

Assay Class: High Sensitivity DNA Assay
Data Path: C:\...ents and Settings\Bioanalyzer\2013-06-25\2013-06-25_003.xad

Created: 6/25/2013 1:25:14 PM
Modified: 6/25/2013 2:03:44 PM

Gel Image

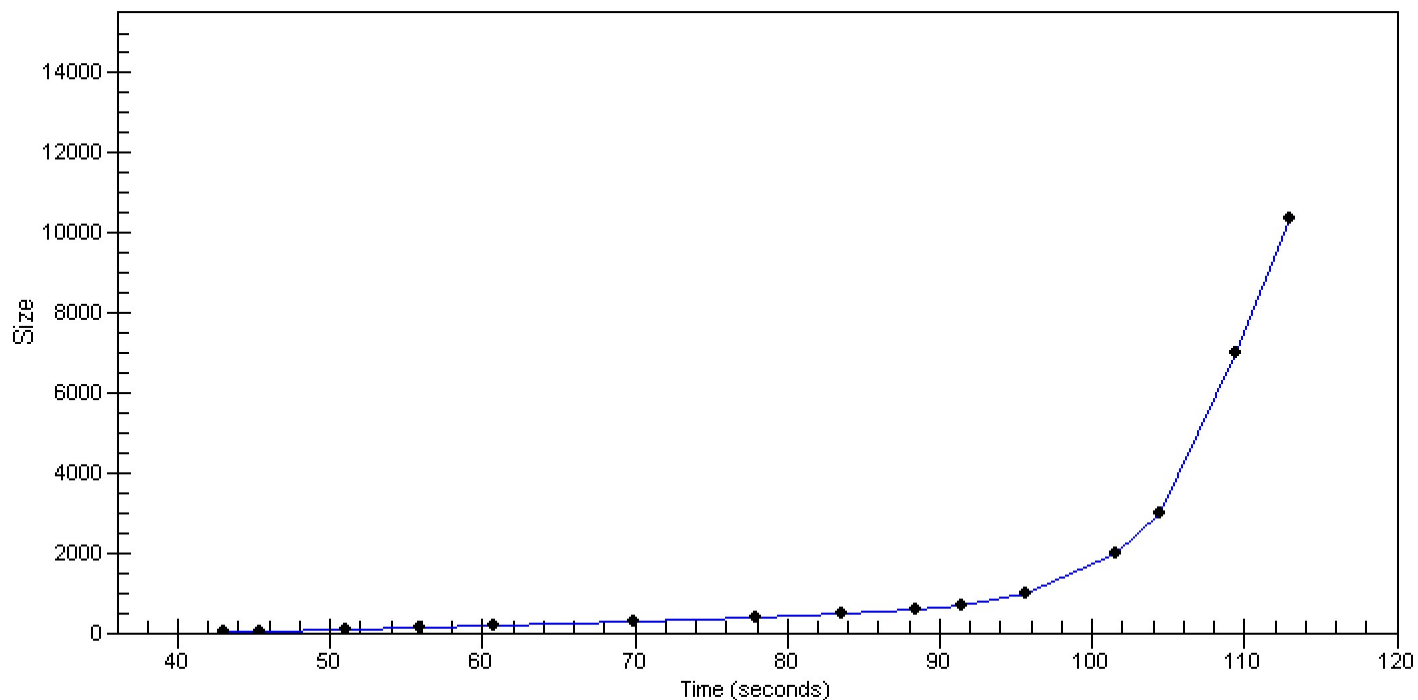


Assay Class: High Sensitivity DNA Assay
Data Path: C:\...ents and Settings\Bioanalyzer\2013-06-25\2013-06-25_003.xad

Created: 6/25/2013 1:25:14 PM
Modified: 6/25/2013 2:03:44 PM

Curves

Standard Curve



Assay Class: High Sensitivity DNA Assay
Data Path: C:\...ents and Settings\Bioanalyzer\2013-06-25\2013-06-25_003.xad

Created: 6/25/2013 1:25:14 PM
Modified: 6/25/2013 2:03:44 PM

Invalid Samples

Sample 11 has not been run, no results available.

Assay Class: High Sensitivity DNA Assay
 Data Path: C:\...ents and Settings\Bioanalyzer\2013-06-25\2013-06-25_003.xad

Created: 6/25/2013 1:25:14 PM
 Modified: 6/25/2013 2:03:44 PM

Run Logbook

Description	Number	Source	Category	Sub Category	Time	Time Zone	User	Host
Run ended on port 1 (Number of wells acquired: 11)		Instrument	Run		6/25/2013 2:03:41 PM	(GMT --07:00) Pacific Standard Time	UC Davis	D8XSMGH1
Run started on port 1 (File: C:\Documents and Settings\Bioanalyzer\2013-06-25\2013-06-25_003.xad)		Instrument	Run		6/25/2013 1:25:20 PM	(GMT --07:00) Pacific Standard Time	UC Davis	D8XSMGH1
Product Number : G2938B		Instrument	Run		6/25/2013 1:25:20 PM	(GMT --07:00) Pacific Standard Time	UC Davis	D8XSMGH1
Name :		Instrument	Run		6/25/2013 1:25:20 PM	(GMT --07:00) Pacific Standard Time	UC Davis	D8XSMGH1
Vendor : Agilent Technologies		Instrument	Run		6/25/2013 1:25:20 PM	(GMT --07:00) Pacific Standard Time	UC Davis	D8XSMGH1
Serial# : DE13701086		Instrument	Run		6/25/2013 1:25:20 PM	(GMT --07:00) Pacific Standard Time	UC Davis	D8XSMGH1
Firmware : C.01.069		Instrument	Run		6/25/2013 1:25:20 PM	(GMT --07:00) Pacific Standard Time	UC Davis	D8XSMGH1
Cartridge : Electrode		Instrument	Run		6/25/2013 1:25:20 PM	(GMT --07:00) Pacific Standard Time	UC Davis	D8XSMGH1