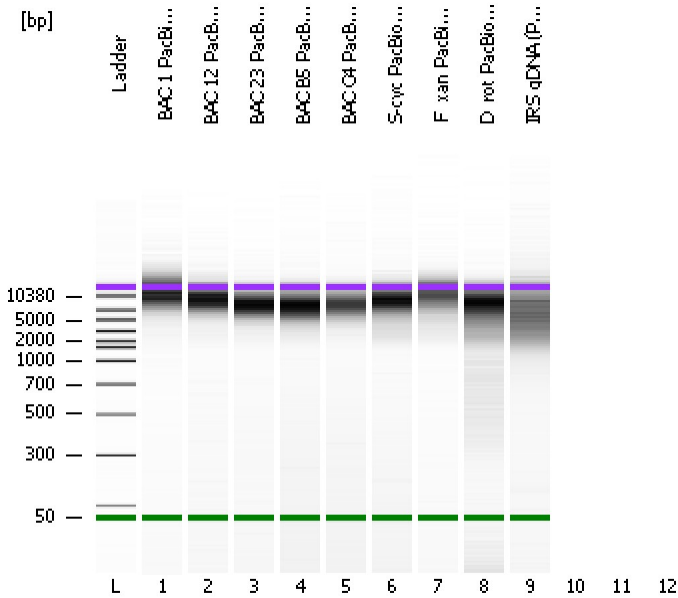


Assay Class: DNA 12000
Data Path: C:\...ents and Settings\Bioanalyzer\2013-06-26\2013-06-26_001.xad

Created: 6/26/2013 9:06:15 AM
Modified: 6/26/2013 9:44:01 AM

Electrophoresis File Run Summary



Instrument Information:

Instrument Name: DE13701086 Firmware: C.01.069
Serial#: DE13701086 Type: G2938B

Assay Information:

Assay Origin Path: C:\Program Files\Agilent\2100 bioanalyzer\2100 expert\assays\dsDNA\DNA 12000 Series II.xsy

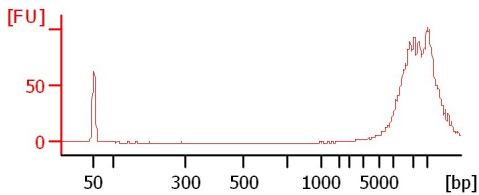
Assay Class: DNA 12000
Version: 2.4
Assay Comments: DNA Analysis 100 -12000 bp

© Copyright 2003-2009 Agilent Technologies, Inc.

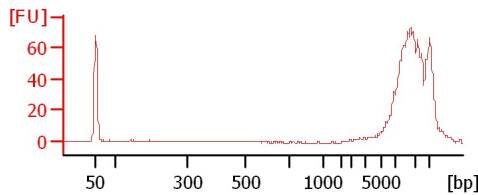
Chip Information:

Chip Lot #:
Reagent Kit Lot #:
Chip Comments:

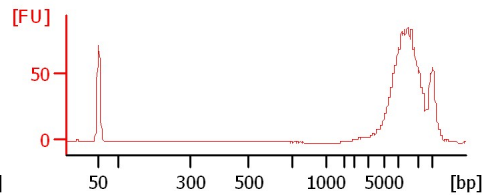
BAC 1 PacBio Lib 1:3



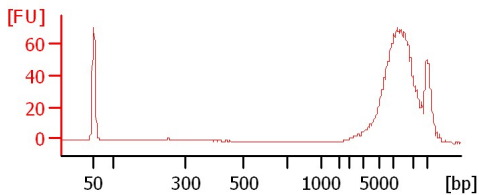
BAC 12 PacBio Lib 1:3



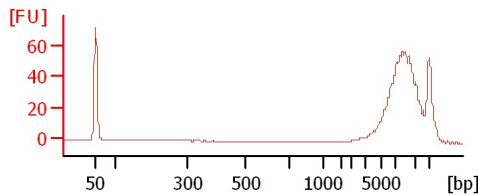
BAC 23 PacBio Lib 1:3



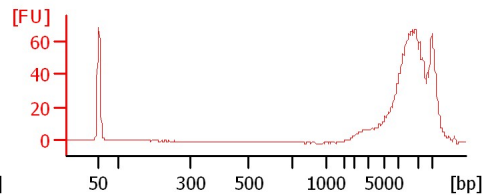
BAC B5 PacBio Lib 1:3



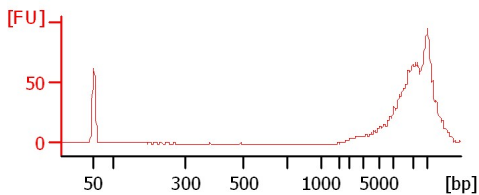
BAC C4 PacBio Lib 1:3



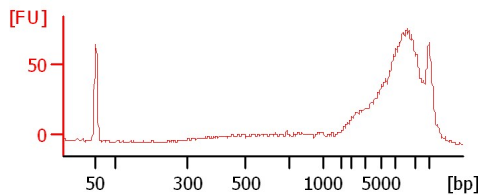
S-cyc PacBio Lib 1:3



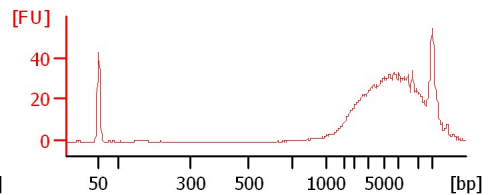
F_xan PacBio Lib 1:3



D_rot PacBio Lib 1:3



IRS gDNA (PacBio)



Assay Class: DNA 12000
 Data Path: C:\...ents and Settings\Bioanalyzer\2013-06-26\2013-06-26_001.xad

Created: 6/26/2013 9:06:15 AM
 Modified: 6/26/2013 9:44:01 AM

Electrophoresis File Run Summary (Chip Summary)

Sample Name	Sample Comment	Rest. Digest	Status	Observation	Result Label	Result Color
BAC 1 PacBio Lib 1:3		<input type="checkbox"/>	✓			
BAC 12 PacBio Lib 1:3		<input type="checkbox"/>	✓			
BAC 23 PacBio Lib 1:3		<input type="checkbox"/>	✓			
BAC B5 PacBio Lib 1:3		<input type="checkbox"/>	✓			
BAC C4 PacBio Lib 1:3		<input type="checkbox"/>	✓			
S-cyc PacBio Lib 1:3		<input type="checkbox"/>	✓			
F_xan PacBio Lib 1:3		<input type="checkbox"/>	✓			
D_rot PacBio Lib 1:3		<input type="checkbox"/>	✓			
IRS gDNA (PacBio)		<input type="checkbox"/>	✓			
		<input type="checkbox"/>				
		<input type="checkbox"/>				
Ladder		<input type="checkbox"/>	✓			

Chip Lot #

Reagent Kit Lot #

Chip Comments :

Assay Class: DNA 12000
Data Path: C:\...ents and Settings\Bioanalyzer\2013-06-26\2013-06-26_001.xad

Created: 6/26/2013 9:06:15 AM
Modified: 6/26/2013 9:44:01 AM

Electrophoresis Assay Details

General Analysis Settings

Number of Available Sample and Ladder Wells (Max.) : 13
Minimum Visible Range [s] : 20
Maximum Visible Range [s] : 99
Start Analysis Time Range [s] : 20
End Analysis Time Range [s] : 98.95
Ladder Concentration [ng/μl] : 44
Uses Standard Area for Ladder Fragments
Lower Marker Concentration [ng/μl] : 8.3
Upper Marker Concentration [ng/μl] : 4.2
Used Upper Marker for Quantitation
This is a Qualitative Assay Only
Standard Curve Fit is Point to Point
Show Data Aligned to Lower and Upper Marker

Integrator Settings

Integration Start Time [s] : 20
Integration End Time [s] : 98.95
Slope Threshold : 0.8
Height Threshold [FU] : 20
Area Threshold : 0.1
Width Threshold [s] : 0.5
Baseline Plateau [s] : 0.5

Filter Settings

Filter Width [s] : 0.5
Polynomial Order : 4

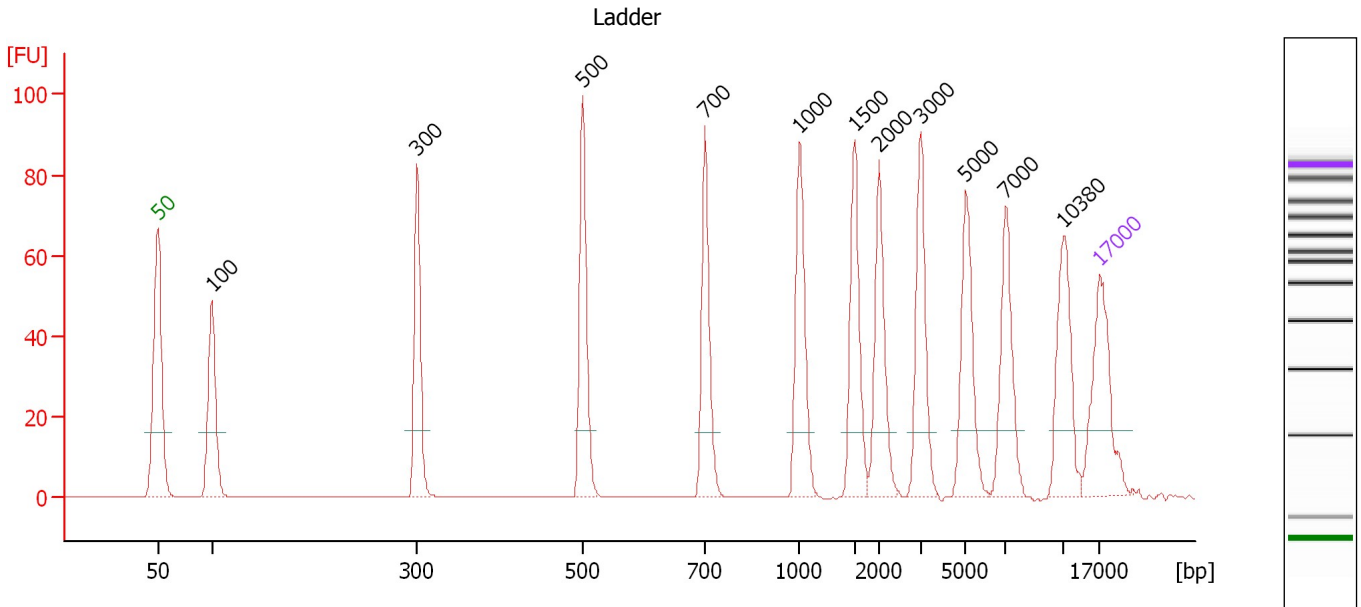
Ladder

Ladder Peak	Size	Area
1	50	120
2	100	48
3	300	61
4	500	77
5	700	81
6	1000	86
7	1500	92
8	2000	92
9	3000	96
10	5000	100
11	7000	98
12	10380	102
13	17000	110

Assay Class: DNA 12000
 Data Path: C:\...ents and Settings\Bioanalyzer\2013-06-26\2013-06-26_001.xad

Created: 6/26/2013 9:06:15 AM
 Modified: 6/26/2013 9:44:01 AM

Electropherogram Summary



Peak table for Ladder

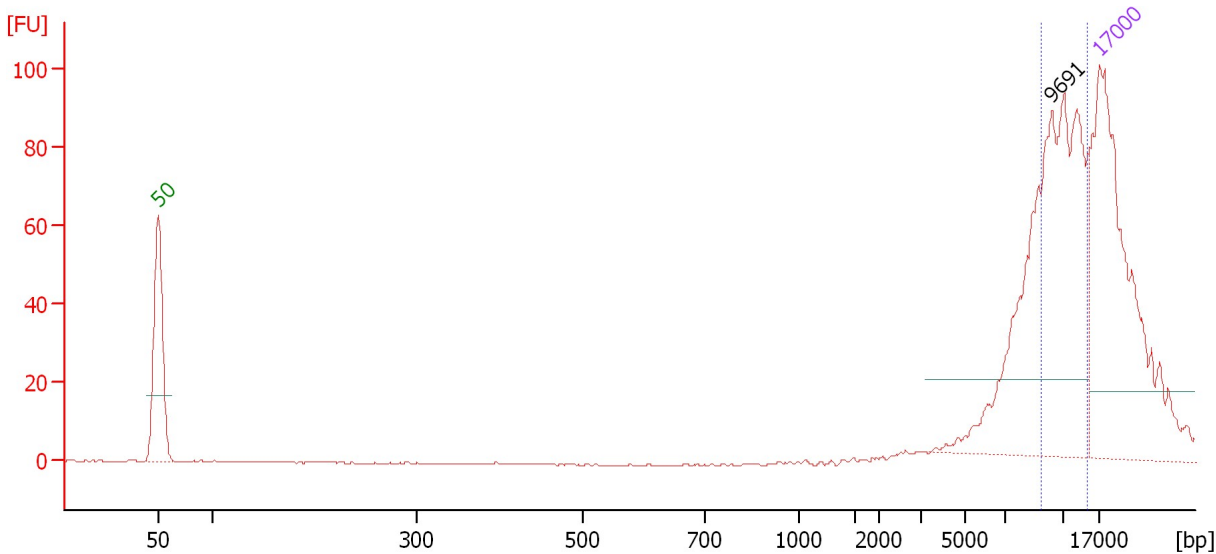
Peak	Size [bp]	Conc. [ng/μl]	Molarity [nmol/l]	Observations
1	50	8.30	251.5	Lower Marker
2	100	4.00	60.6	Ladder Peak
3	300	4.00	20.2	Ladder Peak
4	500	4.00	12.1	Ladder Peak
5	700	4.00	8.7	Ladder Peak
6	1,000	4.00	6.1	Ladder Peak
7	1,500	4.00	4.0	Ladder Peak
8	2,000	4.00	3.0	Ladder Peak
9	3,000	4.00	2.0	Ladder Peak
10	5,000	4.00	1.2	Ladder Peak
11	7,000	4.00	0.9	Ladder Peak
12	10,380	4.00	0.6	Ladder Peak
13	17,000	4.20	0.4	Upper Marker

Assay Class: DNA 12000
 Data Path: C:\...ents and Settings\Bioanalyzer\2013-06-26\2013-06-26_001.xad

Created: 6/26/2013 9:06:15 AM
 Modified: 6/26/2013 9:44:01 AM

Electropherogram Summary Continued ...

BAC 1 PacBio Lib 1:3



Overall Results for sample 1 : BAC 1 PacBio Lib 1:3

Number of peaks found: 1 Area: 198.4

Peak table for sample 1 : BAC 1 PacBio Lib 1:3

Peak	Size [bp]	Conc. [ng/μl]	Molarity [nmol/l]	Observations
1	50	8.30	251.5	Lower Marker
2	9,691	5.71	0.9	
3	17,000	4.20	0.4	Upper Marker

Region table for sample 1 : BAC 1 PacBio Lib 1:3

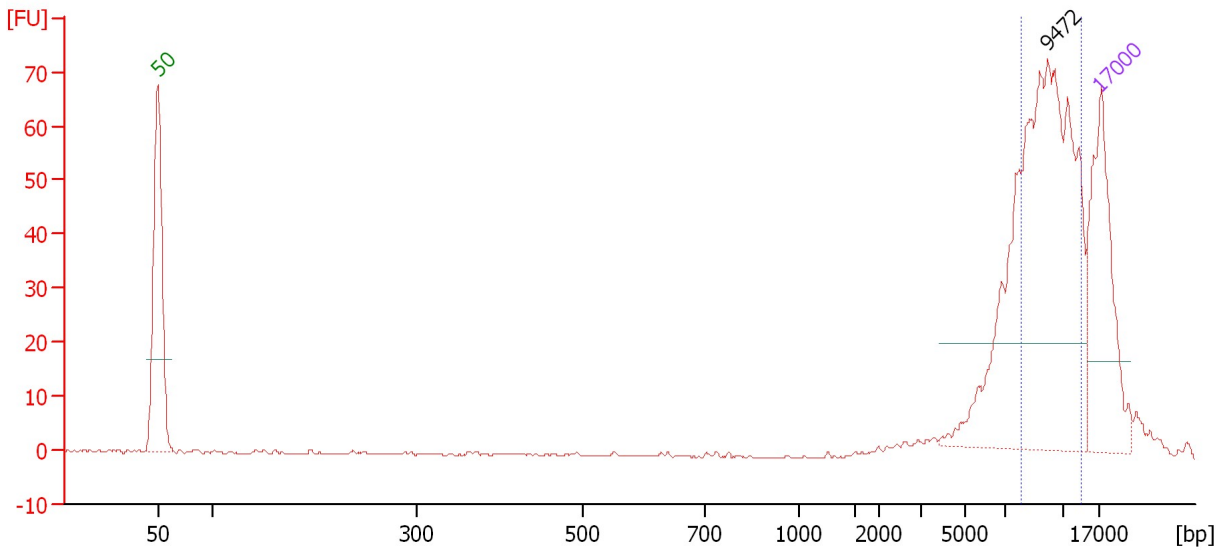
From [bp]	To [bp]	Average Size [bp]	Conc. [ng/μl]	Area	% of Total	Size distribution in CV [%]	Color
9,026	14,523	10,950	3.62	198.4	58	14.5	Blue

Assay Class: DNA 12000
 Data Path: C:\...ents and Settings\Bioanalyzer\2013-06-26\2013-06-26_001.xad

Created: 6/26/2013 9:06:15 AM
 Modified: 6/26/2013 9:44:01 AM

Electropherogram Summary Continued ...

BAC 12 PacBio Lib 1:3



Overall Results for sample 2 : BAC 12 PacBio Lib 1:3

Number of peaks found: 1 Area 1: 195.7

Peak table for sample 2 : BAC 12 PacBio Lib 1:3

Peak	Size [bp]	Conc. [ng/μl]	Molarity [nmol/l]	Observations
1	50	8.30	251.5	Lower Marker
2	9,472	14.51	2.3	
3	17,000	4.20	0.4	Upper Marker

Region table for sample 2 : BAC 12 PacBio Lib 1:3

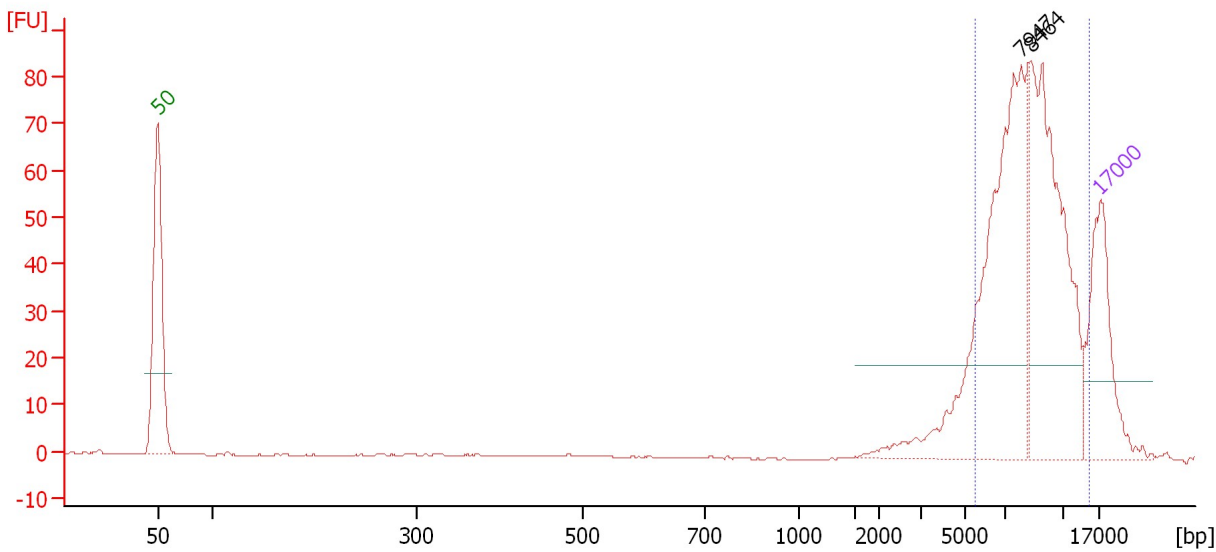
From [bp]	To [bp]	Average Size [bp]	Conc. [ng/μl]	Area	% of Total	Size distribution in CV [%]	Color
7,868	13,471	9,800	10.35	195.7	63	14.2	Blue

Assay Class: DNA 12000
 Data Path: C:\...ents and Settings\Bioanalyzer\2013-06-26\2013-06-26_001.xad

Created: 6/26/2013 9:06:15 AM
 Modified: 6/26/2013 9:44:01 AM

Electropherogram Summary Continued ...

BAC 23 PacBio Lib 1:3



Overall Results for sample 3 : BAC 23 PacBio Lib 1:3

Number of peaks found: 2 Area 1: 335.9

Peak table for sample 3 : BAC 23 PacBio Lib 1:3

Peak	Size [bp]	Conc. [ng/μl]	Molarity [nmol/l]	Observations
1	50	8.30	251.5	Lower Marker
2	7,947	12.96	2.5	
3	8,464	10.39	1.9	
4	17,000	4.20	0.4	Upper Marker

Region table for sample 3 : BAC 23 PacBio Lib 1:3

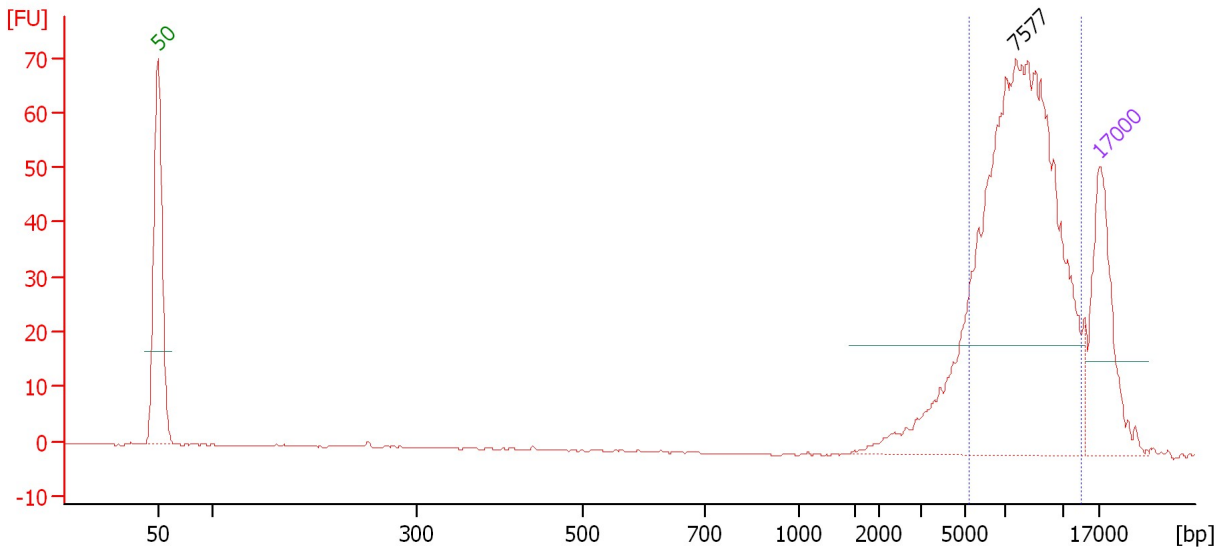
From [bp]	To [bp]	Average Size [bp]	Conc. [ng/μl]	Area	% of Total	Size distribution in CV [%]	Color
5,414	14,869	8,520	21.32	335.9	87	22.5	Blue

Assay Class: DNA 12000
 Data Path: C:\...ents and Settings\Bioanalyzer\2013-06-26\2013-06-26_001.xad

Created: 6/26/2013 9:06:15 AM
 Modified: 6/26/2013 9:44:01 AM

Electropherogram Summary Continued ...

BAC B5 PacBio Lib 1:3



Overall Results for sample 4 : BAC B5 PacBio Lib 1:3

Number of peaks found: 1 Area 1: 296.4

Peak table for sample 4 : BAC B5 PacBio Lib 1:3

Peak	Size [bp]	Conc. [ng/μl]	Molarity [nmol/l]	Observations
1	50	8.30	251.5	Lower Marker
2	7,577	23.62	4.7	
3	17,000	4.20	0.4	Upper Marker

Region table for sample 4 : BAC B5 PacBio Lib 1:3

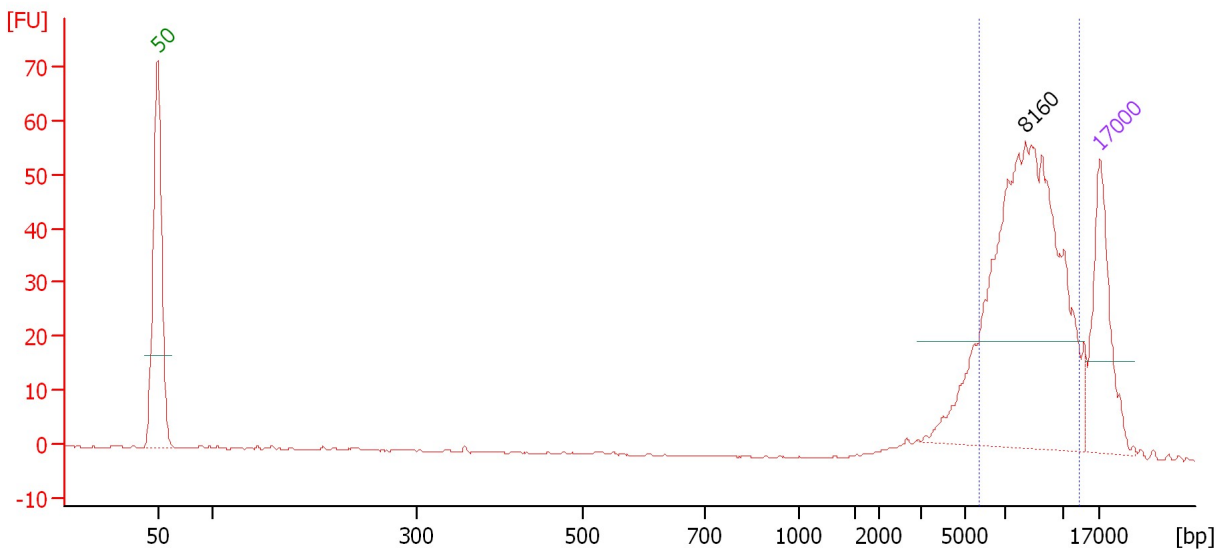
From [bp]	To [bp]	Average Size [bp]	Conc. [ng/μl]	Area	% of Total	Size distribution in CV [%]	Color
5,135	13,532	8,119	20.27	296.4	83	21.7	Blue

Assay Class: DNA 12000
 Data Path: C:\...ents and Settings\Bioanalyzer\2013-06-26\2013-06-26_001.xad

Created: 6/26/2013 9:06:15 AM
 Modified: 6/26/2013 9:44:01 AM

Electropherogram Summary Continued ...

BAC C4 PacBio Lib 1:3



Overall Results for sample 5 : BAC C4 PacBio Lib 1:3

Number of peaks found: 1 Area 1: 211.3

Peak table for sample 5 : BAC C4 PacBio Lib 1:3

Peak	Size [bp]	Conc. [ng/μl]	Molarity [nmol/l]	Observations
1	50	8.30	251.5	Lower Marker
2	8,160	19.48	3.6	
3	17,000	4.20	0.4	Upper Marker

Region table for sample 5 : BAC C4 PacBio Lib 1:3

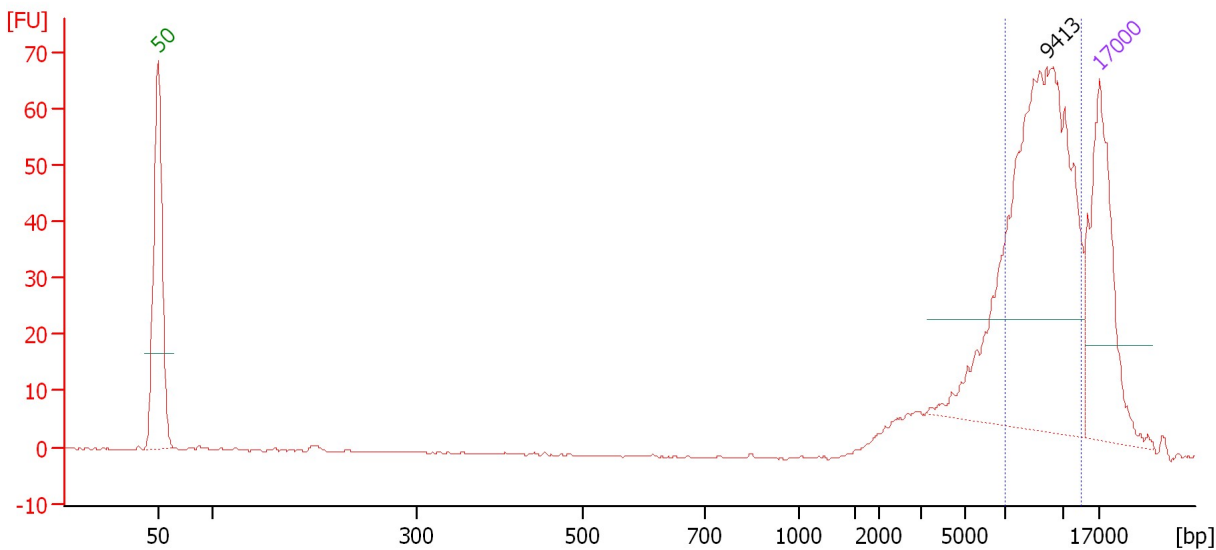
From [bp]	To [bp]	Average Size [bp]	Conc. [ng/μl]	Area	% of Total	Size distribution in CV [%]	Color
5,708	13,275	8,443	17.66	211.3	83	19.3	Blue

Assay Class: DNA 12000
 Data Path: C:\...ents and Settings\Bioanalyzer\2013-06-26\2013-06-26_001.xad

Created: 6/26/2013 9:06:15 AM
 Modified: 6/26/2013 9:44:01 AM

Electropherogram Summary Continued ...

S-cyc PacBio Lib 1:3



Overall Results for sample 6 : S-cyc PacBio Lib 1:3

Number of peaks found: 1 Area 1: 212.5

Peak table for sample 6 : S-cyc PacBio Lib 1:3

Peak	Size [bp]	Conc. [ng/μl]	Molarity [nmol/l]	Observations
1	50	8.30	251.5	Lower Marker
2	9,413	13.49	2.2	
3	17,000	4.20	0.4	Upper Marker

Region table for sample 6 : S-cyc PacBio Lib 1:3

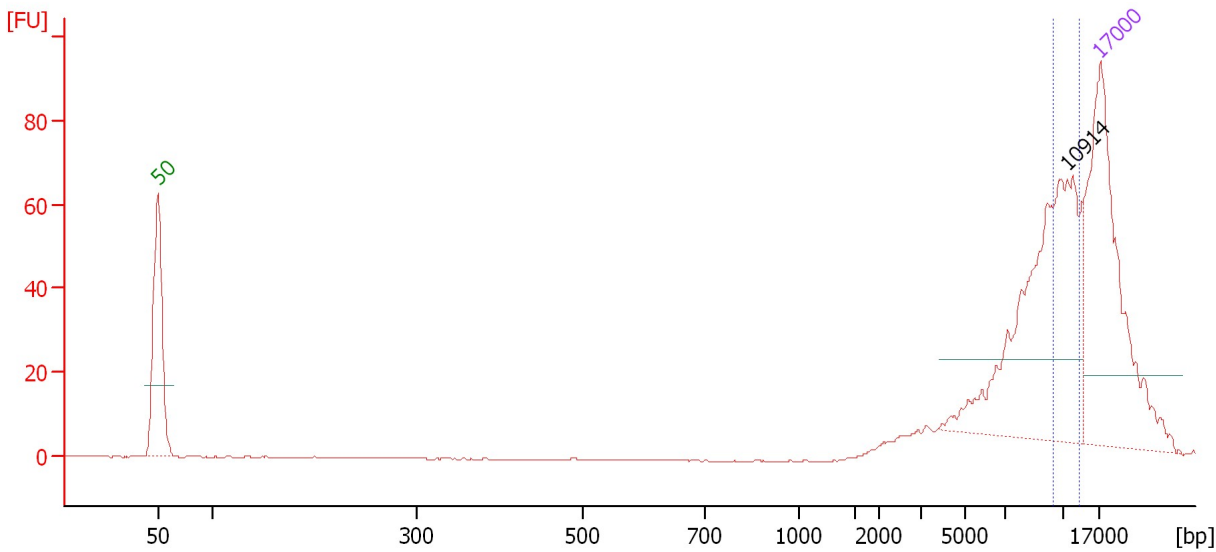
From [bp]	To [bp]	Average Size [bp]	Conc. [ng/μl]	Area	% of Total	Size distribution in CV [%]	Color
6,980	13,650	9,377	11.90	212.5	69	16.4	Blue

Assay Class: DNA 12000
 Data Path: C:\...ents and Settings\Bioanalyzer\2013-06-26\2013-06-26_001.xad

Created: 6/26/2013 9:06:15 AM
 Modified: 6/26/2013 9:44:01 AM

Electropherogram Summary Continued ...

F_xan PacBio Lib 1:3



Overall Results for sample 7 : F_xan PacBio Lib 1:3

Number of peaks found: 1 Area 1: 77.3

Peak table for sample 7 : F_xan PacBio Lib 1:3

Peak	Size [bp]	Conc. [ng/μl]	Molarity [nmol/l]	Observations
1	50	8.30	251.5	Lower Marker
2	10,914	5.34	0.7	
3	17,000	4.20	0.4	Upper Marker

Region table for sample 7 : F_xan PacBio Lib 1:3

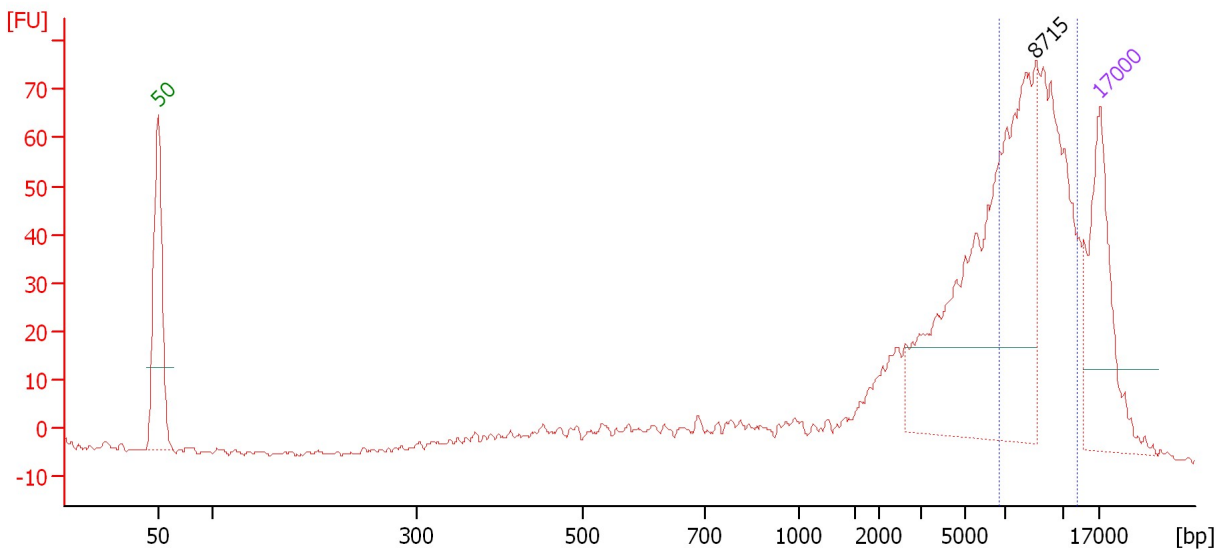
From [bp]	To [bp]	Average Size [bp]	Conc. [ng/μl]	Area	% of Total	Size distribution in CV [%]	Color
9,823	13,263	11,025	2.14	77.3	32	9.5	Blue

Assay Class: DNA 12000
 Data Path: C:\...ents and Settings\Bioanalyzer\2013-06-26\2013-06-26_001.xad

Created: 6/26/2013 9:06:15 AM
 Modified: 6/26/2013 9:44:01 AM

Electropherogram Summary Continued ...

D_rot PacBio Lib 1:3



Overall Results for sample 8 : D_rot PacBio Lib 1:3

Number of peaks found: 1 Area: 253.4

Peak table for sample 8 : D_rot PacBio Lib 1:3

Peak	Size [bp]	Conc. [ng/μl]	Molarity [nmol/l]	Observations
1	50	8.30	251.5	Lower Marker
2	8,715	13.61	2.4	
3	17,000	4.20	0.4	Upper Marker

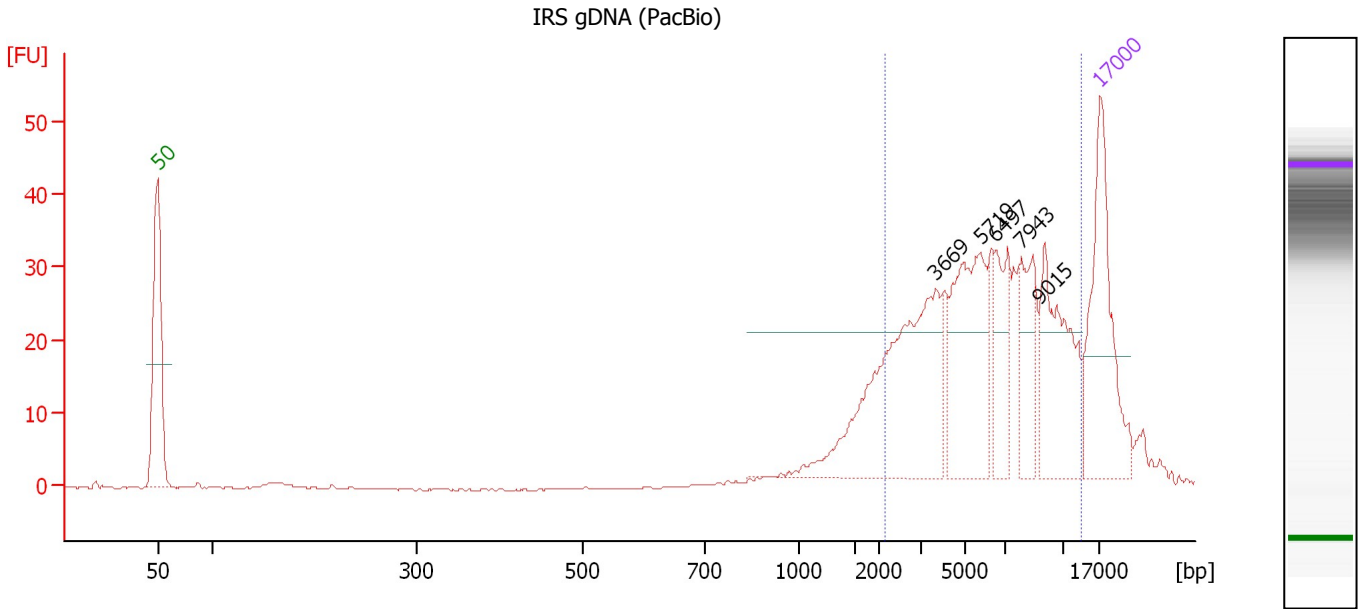
Region table for sample 8 : D_rot PacBio Lib 1:3

From [bp]	To [bp]	Average Size [bp]	Conc. [ng/μl]	Area	% of Total	Size distribution in CV [%]	Color
6,642	12,863	8,885	13.14	253.4	51	16.3	Blue

Assay Class: DNA 12000
 Data Path: C:\...ents and Settings\Bioanalyzer\2013-06-26\2013-06-26_001.xad

Created: 6/26/2013 9:06:15 AM
 Modified: 6/26/2013 9:44:01 AM

Electropherogram Summary Continued ...



Overall Results for sample 9 : IRS gDNA (PacBio)

Number of peaks found: 5 Area 1: 245.4

Peak table for sample 9 : IRS gDNA (PacBio)

Peak	Size [bp]	Conc. [ng/μl]	Molarity [nmol/l]	Observations
1	50	8.30	251.5	Lower Marker
2	3,669	7.24	3.0	
3	5,719	4.66	1.2	
4	6,497	1.89	0.4	
5	7,943	1.83	0.3	
6	9,015	3.69	0.6	
7	17,000	4.20	0.4	Upper Marker

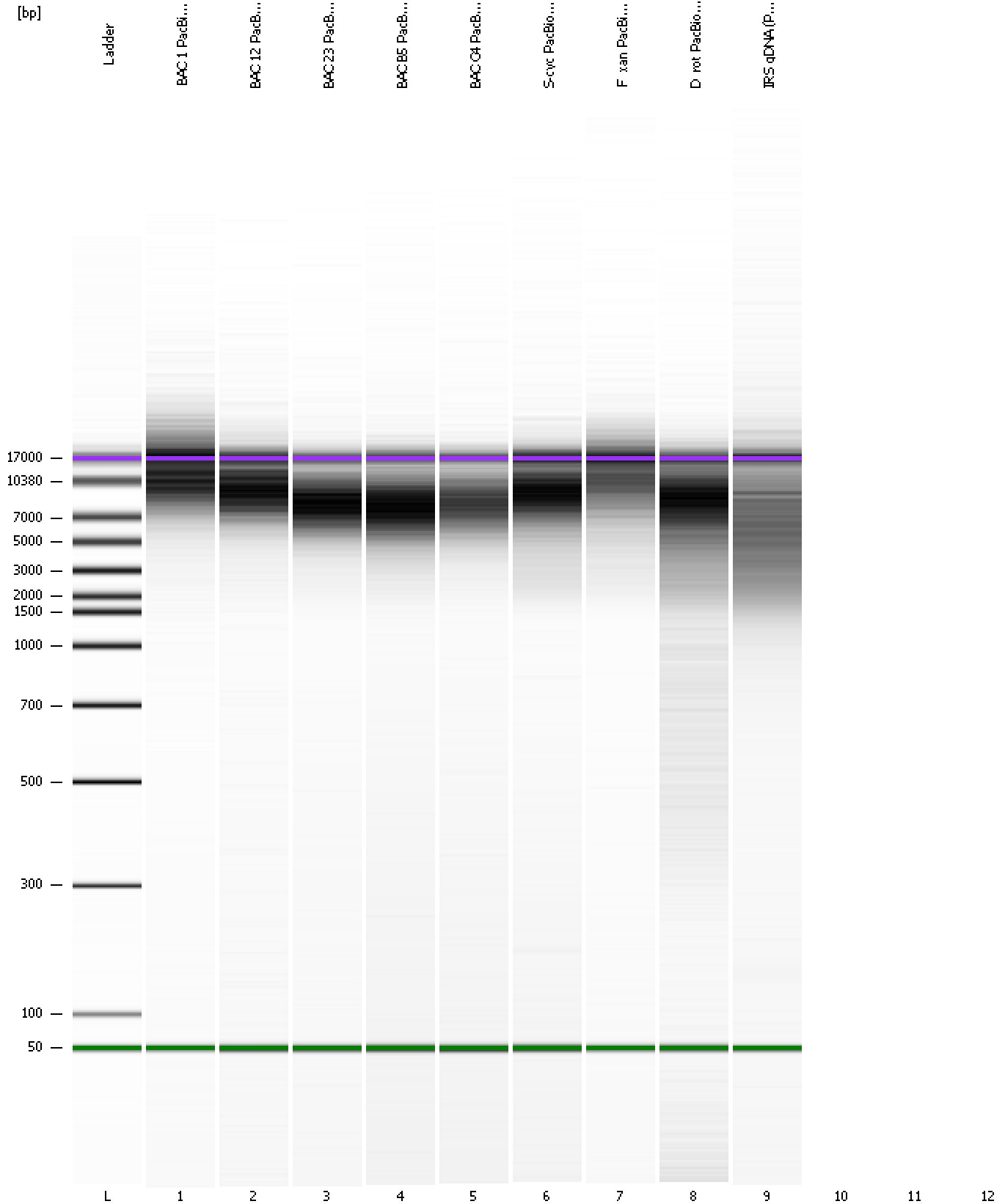
Region table for sample 9 : IRS gDNA (PacBio)

From [bp]	To [bp]	Average Size [bp]	Conc. [ng/μl]	Area	% of Total	Size distribution in CV [%]	Color
2,152	13,413	6,234	20.63	245.4	78	43.8	Blue

Assay Class: DNA 12000
Data Path: C:\...ents and Settings\Bioanalyzer\2013-06-26\2013-06-26_001.xad

Created: 6/26/2013 9:06:15 AM
Modified: 6/26/2013 9:44:01 AM

Gel Image

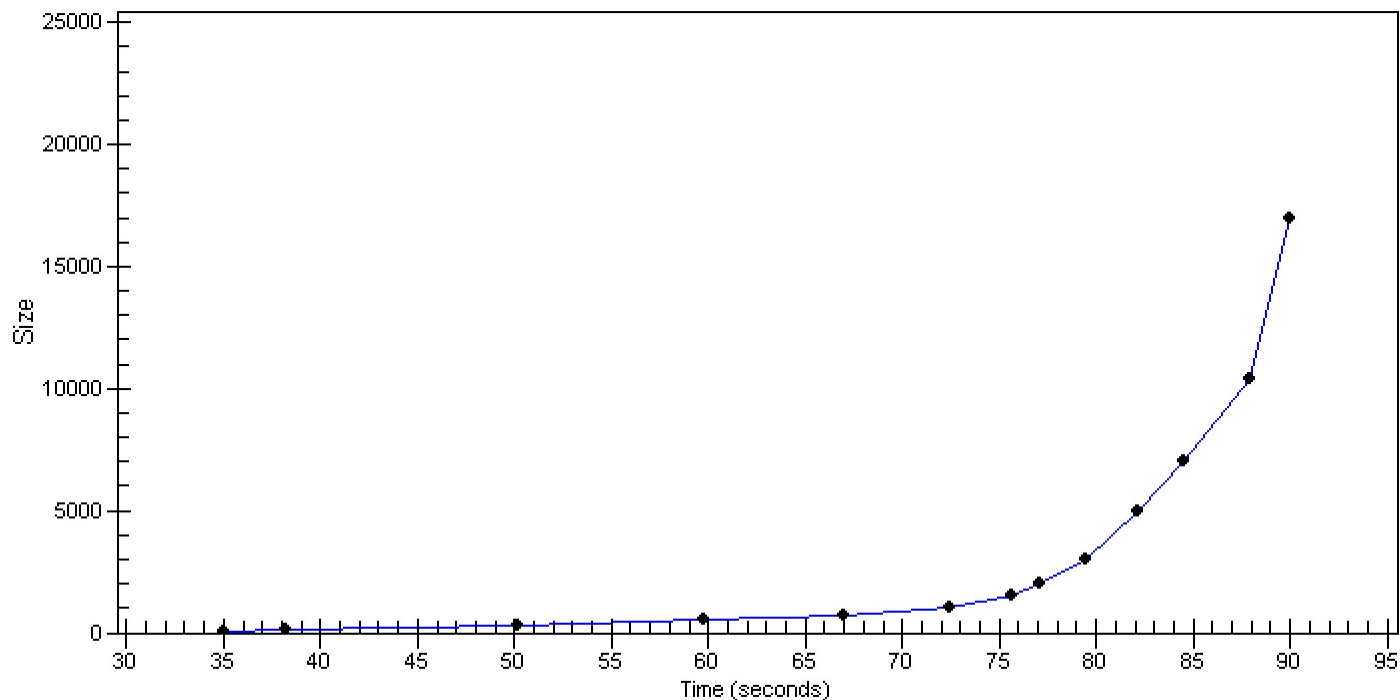


Assay Class: DNA 12000
Data Path: C:\...ents and Settings\Bioanalyzer\2013-06-26\2013-06-26_001.xad

Created: 6/26/2013 9:06:15 AM
Modified: 6/26/2013 9:44:01 AM

Curves

Standard Curve



Assay Class: DNA 12000
Data Path: C:\...ents and Settings\Bioanalyzer\2013-06-26\2013-06-26_001.xad

Created: 6/26/2013 9:06:15 AM
Modified: 6/26/2013 9:44:01 AM

Invalid Samples

Sample 10 has not been run, no results available.

Sample 11 has not been run, no results available.

Sample 12 has not been run, no results available.

Assay Class: DNA 12000
 Data Path: C:\...ents and Settings\Bioanalyzer\2013-06-26\2013-06-26_001.xad

Created: 6/26/2013 9:06:15 AM
 Modified: 6/26/2013 9:44:01 AM

Run Logbook

Description	Number	Source	Category	Sub Category	Time	Time Zone	User	Host
Run ended on port 1 (Number of wells acquired: 10)		Instrument	Run		6/26/2013 9:34:54 AM	(GMT --07:00) Pacific Standard Time	UC Davis	D8XSMGH1
Run started on port 1 (File: C:\Documents and Settings\Bioanalyzer\2013-06-26\2013-06-26_001.xad)		Instrument	Run		6/26/2013 9:06:20 AM	(GMT --07:00) Pacific Standard Time	UC Davis	D8XSMGH1
Product Number : G2938B		Instrument	Run		6/26/2013 9:06:20 AM	(GMT --07:00) Pacific Standard Time	UC Davis	D8XSMGH1
Name :		Instrument	Run		6/26/2013 9:06:20 AM	(GMT --07:00) Pacific Standard Time	UC Davis	D8XSMGH1
Vendor : Agilent Technologies		Instrument	Run		6/26/2013 9:06:20 AM	(GMT --07:00) Pacific Standard Time	UC Davis	D8XSMGH1
Serial# : DE13701086		Instrument	Run		6/26/2013 9:06:20 AM	(GMT --07:00) Pacific Standard Time	UC Davis	D8XSMGH1
Firmware : C.01.069		Instrument	Run		6/26/2013 9:06:20 AM	(GMT --07:00) Pacific Standard Time	UC Davis	D8XSMGH1
Cartridge : Electrode		Instrument	Run		6/26/2013 9:06:20 AM	(GMT --07:00) Pacific Standard Time	UC Davis	D8XSMGH1