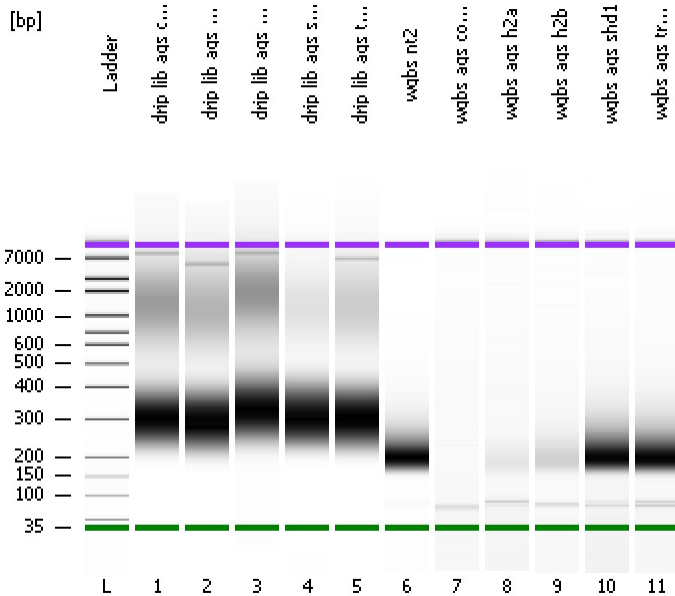


Assay Class: High Sensitivity DNA Assay
Data Path: C:\...ents and Settings\Bioanalyzer\2013-06-27\2013-06-27_001.xad

Created: 6/27/2013 10:31:52 AM
Modified: 6/27/2013 11:13:11 AM

Electrophoresis File Run Summary



Instrument Information:

Instrument Name: DE13701086 Firmware: C.01.069
Serial#: DE13701086 Type: G2938B

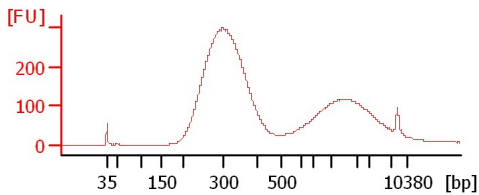
Assay Information:

Assay Origin Path: C:\Program Files\Agilent\2100 bioanalyzer\2100 expert\assays\dsDNA\High Sensitivity DNA.xsy
Assay Class: High Sensitivity DNA Assay
Version: 1.03
Assay Comments: Copyright © 2003-2010 Agilent Technologies

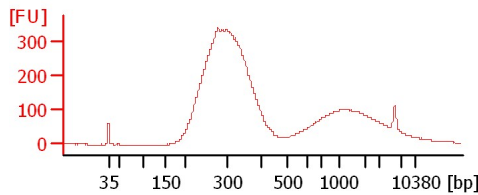
Chip Information:

Chip Lot #:
Reagent Kit Lot #:
Chip Comments:

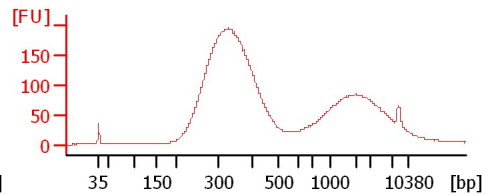
drip lib ags control



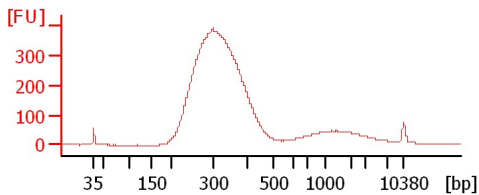
drip lib ags h2a



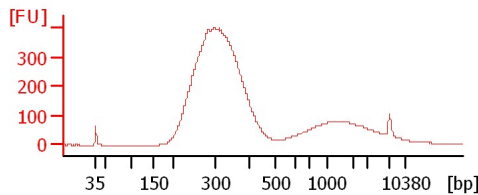
drip lib ags h2b



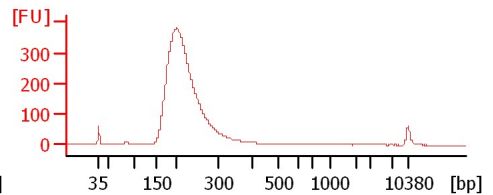
drip lib ags shd1



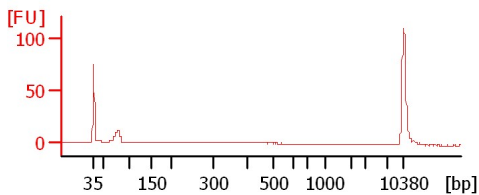
drip lib ags trex1



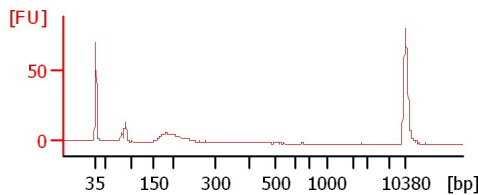
wgbs nt2



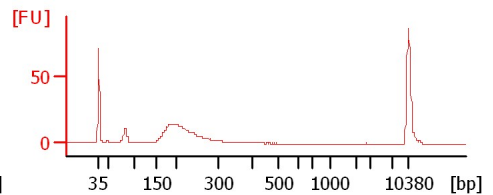
wgbs ags control



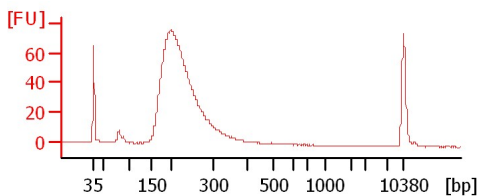
wgbs ags h2a



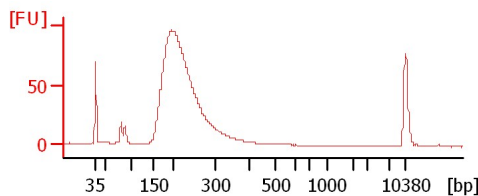
wgbs ags h2b



wgbs ags shd1



wgbs ags trex1



Assay Class: High Sensitivity DNA Assay
 Data Path: C:\...ents and Settings\Bioanalyzer\2013-06-27\2013-06-27_001.xad

Created: 6/27/2013 10:31:52 AM
 Modified: 6/27/2013 11:13:11 AM

Electrophoresis File Run Summary (Chip Summary)

Sample Name	Sample Comment	Rest. Digest	Status	Observation	Result Label	Result Color
drip lib ags control		<input type="checkbox"/>	✓			
drip lib ags h2a		<input type="checkbox"/>	✓			
drip lib ags h2b		<input type="checkbox"/>	✓			
drip lib ags shd1		<input type="checkbox"/>	✓			
drip lib ags trex1		<input type="checkbox"/>	✓			
wgbs nt2		<input type="checkbox"/>	✓			
wgbs ags control		<input type="checkbox"/>	✓			
wgbs ags h2a		<input type="checkbox"/>	✓			
wgbs ags h2b		<input type="checkbox"/>	✓			
wgbs ags shd1		<input type="checkbox"/>	✓			
wgbs ags trex1		<input type="checkbox"/>	✓			
Ladder		<input type="checkbox"/>	✓			

Chip Lot #

Reagent Kit Lot #

Chip Comments :

Assay Class: High Sensitivity DNA Assay
Data Path: C:\...ents and Settings\Bioanalyzer\2013-06-27\2013-06-27_001.xad

Created: 6/27/2013 10:31:52 AM
Modified: 6/27/2013 11:13:11 AM

Electrophoresis Assay Details

General Analysis Settings

Number of Available Sample and Ladder Wells (Max.) : 12
Minimum Visible Range [s] : 32
Maximum Visible Range [s] : 138
Start Analysis Time Range [s] : 33
End Analysis Time Range [s] : 137.5
Ladder Concentration [pg/μl] : 1950
Uses Standard Area for Ladder Fragments
Lower Marker Concentration [pg/μl] : 125
Upper Marker Concentration [pg/μl] : 75
Used Upper Marker for Quantitation
Standard Curve Fit is Point to Point
Show Data Aligned to Lower and Upper Marker

Integrator Settings

Integration Start Time [s] : 33.05
Integration End Time [s] : 137
Slope Threshold : 0.8
Height Threshold [FU] : 5
Area Threshold : 0.1
Width Threshold [s] : 0.6
Baseline Plateau [s] : 0.5

Filter Settings

Filter Width [s] : 0.5
Polynomial Order : 4

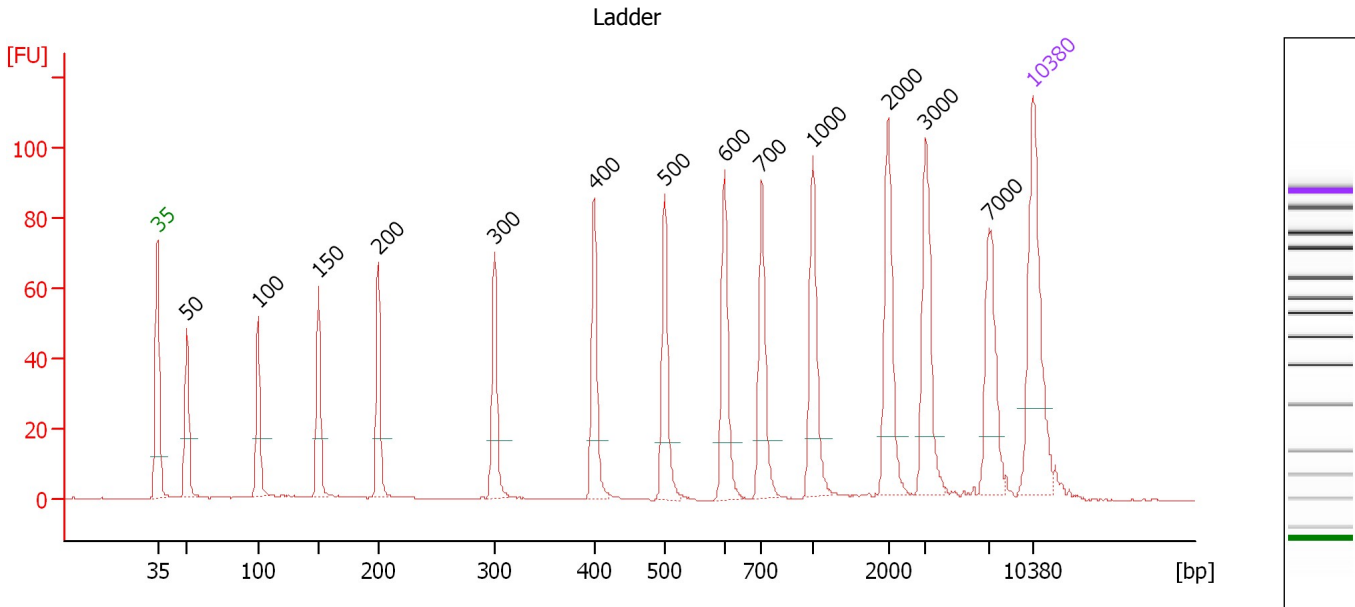
Ladder

Ladder Peak	Size	Area
1	35	160
2	50	210
3	100	208
4	150	221
5	200	242
6	300	270
7	400	305
8	500	306
9	600	336
10	700	321
11	1000	366
12	2000	413
13	3000	411
14	7000	400
15	10380	214

Assay Class: High Sensitivity DNA Assay
 Data Path: C:\...ents and Settings\Bioanalyzer\2013-06-27\2013-06-27_001.xad

Created: 6/27/2013 10:31:52 AM
 Modified: 6/27/2013 11:13:11 AM

Electropherogram Summary



Overall Results for Ladder

Noise: 0.1

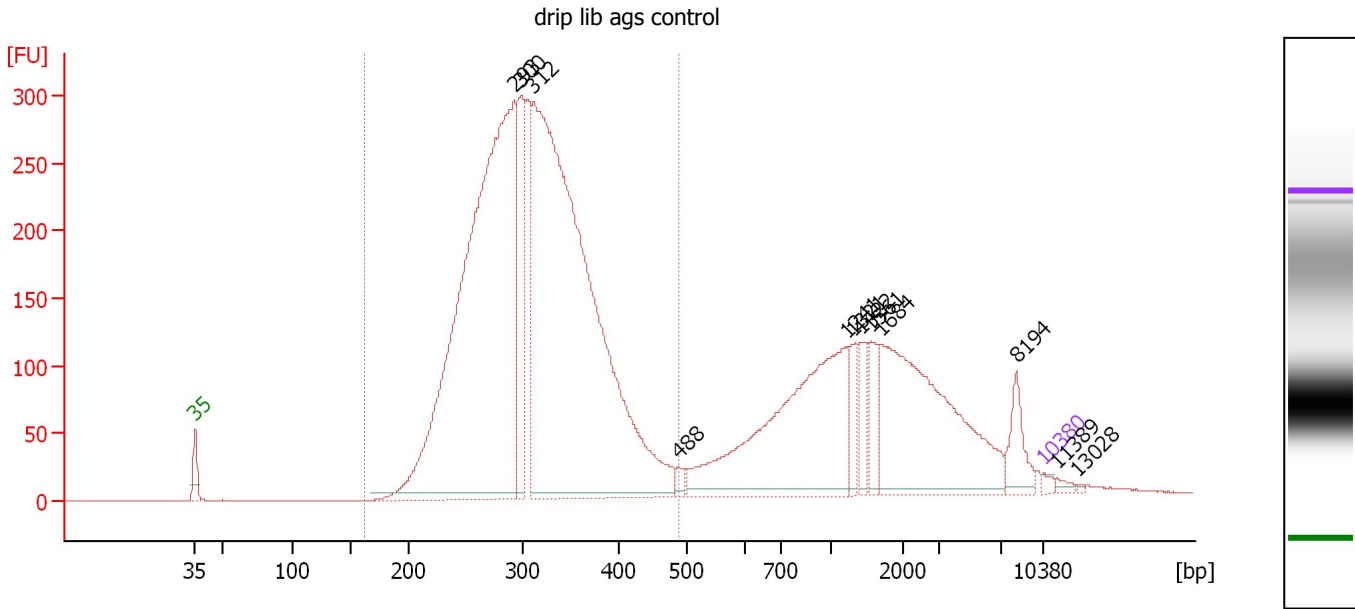
Peak table for Ladder

Peak	Size [bp]	Conc. [pg/μl]	Molarity [pmol/l]	Observations
1	35	125.00	5,411.3	Lower Marker
2	50	150.00	4,545.5	Ladder Peak
3	100	150.00	2,272.7	Ladder Peak
4	150	150.00	1,515.2	Ladder Peak
5	200	150.00	1,136.4	Ladder Peak
6	300	150.00	757.6	Ladder Peak
7	400	150.00	568.2	Ladder Peak
8	500	150.00	454.5	Ladder Peak
9	600	150.00	378.8	Ladder Peak
10	700	150.00	324.7	Ladder Peak
11	1,000	150.00	227.3	Ladder Peak
12	2,000	150.00	113.6	Ladder Peak
13	3,000	150.00	75.8	Ladder Peak
14	7,000	150.00	32.5	Ladder Peak
15	10,380	75.00	10.9	Upper Marker

Assay Class: High Sensitivity DNA Assay
 Data Path: C:\...ents and Settings\Bioanalyzer\2013-06-27\2013-06-27_001.xad

Created: 6/27/2013 10:31:52 AM
 Modified: 6/27/2013 11:13:11 AM

Electropherogram Summary Continued ...



Overall Results for sample 1 : drip lib ags control

Number of peaks found: 12 Corr. Area 1: 5,165.8
 Noise: 0.2

Peak table for sample 1 : drip lib ags control

Peak	Size [bp]	Conc. [pg/μl]	Molarity [pmol/l]	Observations
1	35	125.00	5,411.3	Lower Marker
2	293	19,672.15	101,720.8	
3	300	2,593.06	13,112.3	
4	312	21,069.24	102,230.7	
5	488	178.84	555.1	
6	1,241	5,439.97	6,644.2	
7	1,321	523.59	600.7	
8	1,422	585.91	624.1	
9	1,561	538.30	522.6	
10	1,684	4,671.66	4,202.1	
11	8,194	615.60	113.8	
12	10,380	75.00	10.9	Upper Marker
13	11,389	0.00	0.0	
14	13,028	0.00	0.0	

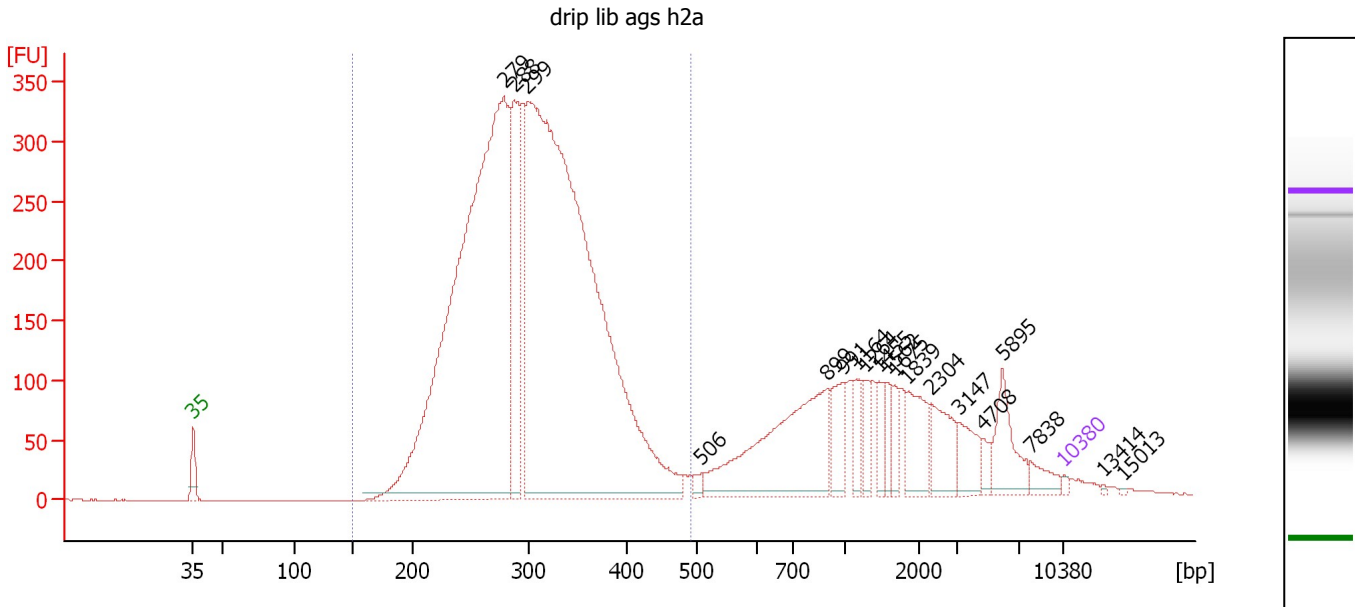
Region table for sample 1 : drip lib ags control

From [bp]	To [bp]	Average Size [bp]	Molarity [pmol/l]	Conc. [pg/μl]	Corr. Area	% of Total	Size distribution in CV [%]	Color
161	489	312	224,346.9	44,533.39	5,165.8	71	17.1	Blue

Assay Class: High Sensitivity DNA Assay
 Data Path: C:\...ents and Settings\Bioanalyzer\2013-06-27\2013-06-27_001.xad

Created: 6/27/2013 10:31:52 AM
 Modified: 6/27/2013 11:13:11 AM

Electropherogram Summary Continued ...



Overall Results for sample 2 : drip lib ags h2a

Number of peaks found: 19 Corr. Area 1: 6,359.2
 Noise: 0.2

Peak table for sample 2 : drip lib ags h2a

Peak	Size [bp]	Conc. [pg/μl]	Molarity [pmol/l]	Observations
1	35	125.00	5,411.3	Lower Marker
2	279	39,972.28	217,288.7	
3	288	6,407.68	33,717.3	
4	299	48,327.98	244,898.1	
5	506	236.40	708.0	
6	899	6,957.05	11,721.1	
7	991	1,426.41	2,181.0	
8	1,164	743.79	968.0	
9	1,264	678.80	813.9	
10	1,455	735.27	765.5	
11	1,562	576.84	559.6	
12	1,675	551.87	499.1	
13	1,839	1,633.00	1,345.7	
14	2,304	1,504.02	989.0	
15	3,147	1,050.07	505.5	
16	4,708	327.47	105.4	
17	5,895	1,612.86	414.5	
18	7,838	539.19	104.2	
19	10,380	75.00	10.9	Upper Marker
20	13,414	0.00	0.0	
21	15,013	0.00	0.0	

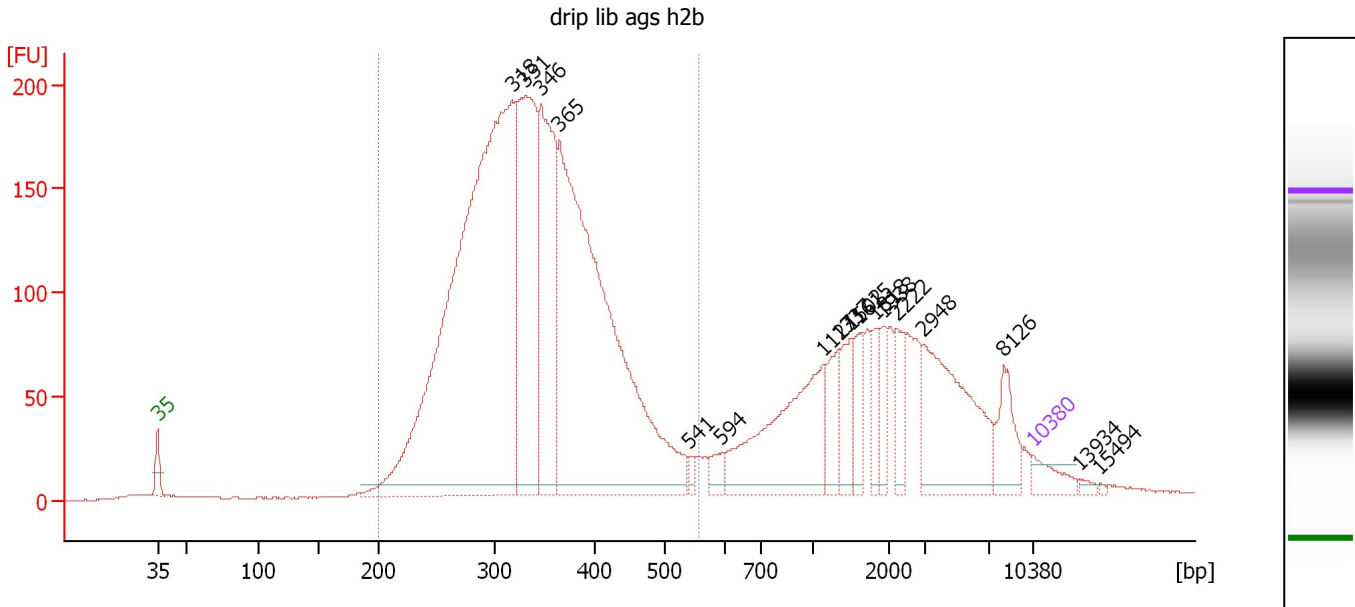
Region table for sample 2 : drip lib ags h2a

From [bp]	To [bp]	Average Size [bp]	Molarity [pmol/l]	Conc. [pg/μl]	Corr. Area	% of Total	Size distribution in CV [%]	Color
149	491	304	491,661.8	94,672.23	6,359.2	76	17.9	Blue

Assay Class: High Sensitivity DNA Assay
 Data Path: C:\...ents and Settings\Bioanalyzer\2013-06-27\2013-06-27_001.xad

Created: 6/27/2013 10:31:52 AM
 Modified: 6/27/2013 11:13:11 AM

Electropherogram Summary Continued ...



Overall Results for sample 3 : drip lib ags h2b

Number of peaks found: 17 Corr. Area 1: 3,635.9
 Noise: 0.3

Peak table for sample 3 : drip lib ags h2b

Peak	Size [bp]	Conc. [pg/μl]	Molarity [pmol/l]	Observations
1	35	125.00	5,411.3	Lower Marker
2	318	4,370.67	20,822.0	
3	331	1,349.70	6,175.9	
4	346	1,067.67	4,668.7	
5	365	3,012.78	12,497.0	
6	541	32.70	91.5	
7	594	65.49	167.0	
8	1,127	703.48	945.5	
9	1,337	164.26	186.1	
10	1,502	160.12	161.5	
11	1,615	115.49	108.4	
12	1,818	100.86	84.1	
13	1,938	92.64	72.4	
14	2,222	123.57	84.3	
15	2,948	588.61	302.5	
16	8,126	165.57	30.9	
17	10,380	75.00	10.9	Upper Marker
18	13,934	0.00	0.0	
19	15,494	0.00	0.0	

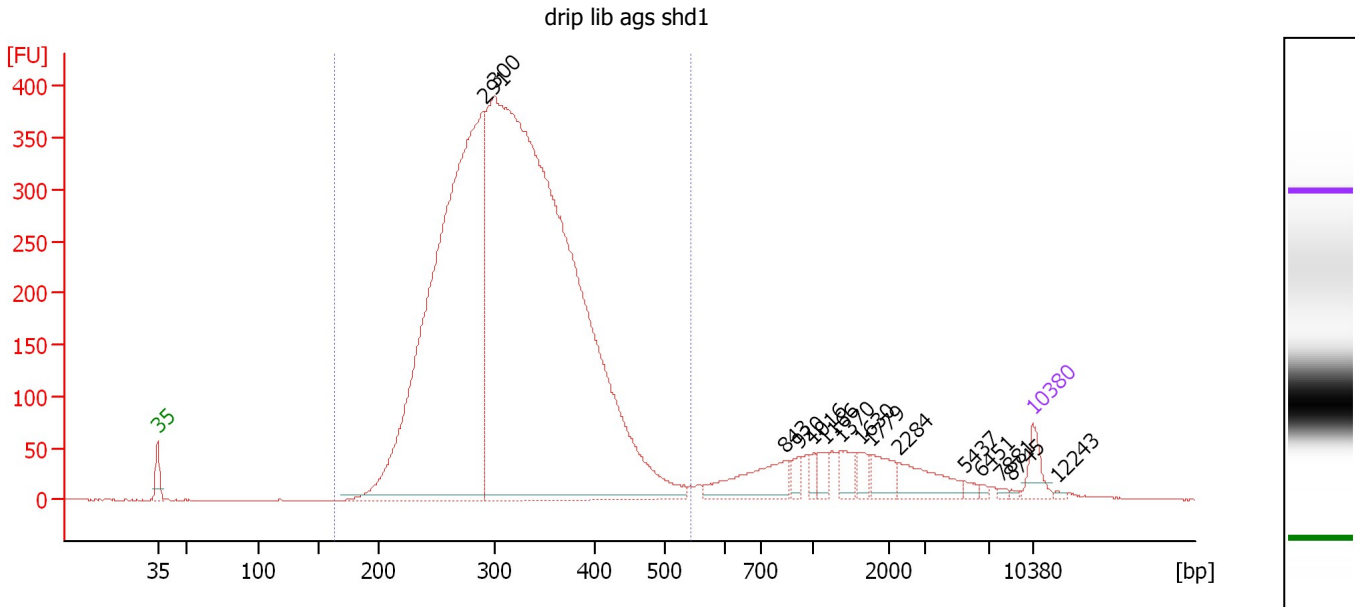
Region table for sample 3 : drip lib ags h2b

From [bp]	To [bp]	Average Size [bp]	Molarity [pmol/l]	Conc. [pg/μl]	Corr. Area	% of Total	Size distribution in CV [%]	Color
200	558	341	47,181.2	10,115.24	3,635.9	71	19.3	Blue

Assay Class: High Sensitivity DNA Assay
 Data Path: C:\...ents and Settings\Bioanalyzer\2013-06-27\2013-06-27_001.xad

Created: 6/27/2013 10:31:52 AM
 Modified: 6/27/2013 11:13:11 AM

Electropherogram Summary Continued ...



Overall Results for sample 4 : drip lib ags shd1

Number of peaks found: 15 Corr. Area 1: 7,101.0
 Noise: 0.2

Peak table for sample 4 : drip lib ags shd1

Peak	Size [bp]	Conc. [pg/µl]	Molarity [pmol/l]	Observations
1	35	125.00	5,411.3	Lower Marker
2	291	4,458.30	23,227.0	
3	300	7,635.56	38,561.3	
4	843	240.62	432.6	
5	920	46.16	76.0	
6	1,016	35.09	52.3	
7	1,166	51.39	66.8	
8	1,370	74.03	81.9	
9	1,630	46.59	43.3	
10	1,779	95.14	81.0	
11	2,284	143.89	95.4	
12	5,437	19.38	5.4	
13	6,451	10.95	2.6	
14	7,881	8.46	1.6	
15	8,745	5.70	1.0	
16	10,380	75.00	10.9	Upper Marker
17	12,243	0.00	0.0	

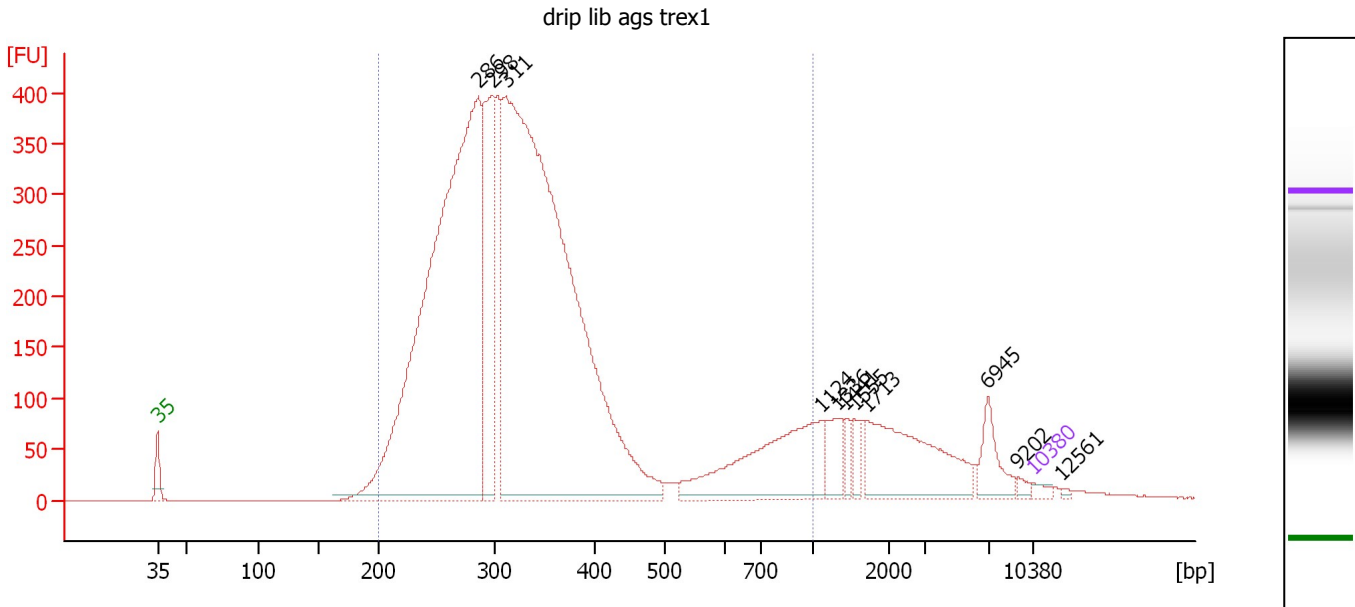
Region table for sample 4 : drip lib ags shd1

From [bp]	To [bp]	Average Size [bp]	Molarity [pmol/l]	Conc. [pg/µl]	Corr. Area	% of Total	Size distribution in CV [%]	Color
164	543	319	57,710.6	11,639.23	7,101.0	89	18.6	Blue

Assay Class: High Sensitivity DNA Assay
 Data Path: C:\...ents and Settings\Bioanalyzer\2013-06-27\2013-06-27_001.xad

Created: 6/27/2013 10:31:52 AM
 Modified: 6/27/2013 11:13:11 AM

Electropherogram Summary Continued ...



Overall Results for sample 5 : drip lib ags trex1

Number of peaks found: 11 Corr. Area 1: 7,949.3
 Noise: 0.2

Peak table for sample 5 : drip lib ags trex1

Peak	Size [bp]	Conc. [pg/μl]	Molarity [pmol/l]	Observations
1	35	125.00	5,411.3	Lower Marker
2	286	16,473.34	87,255.0	
3	298	3,507.76	17,845.8	
4	311	20,501.76	99,818.8	
5	1,124	2,381.97	3,210.4	
6	1,336	441.37	500.7	
7	1,441	193.88	203.8	
8	1,555	245.74	239.5	
9	1,713	1,948.77	1,723.4	
10	6,945	521.33	113.7	
11	9,202	72.40	11.9	
12	10,380	75.00	10.9	Upper Marker
13	12,561	0.00	0.0	

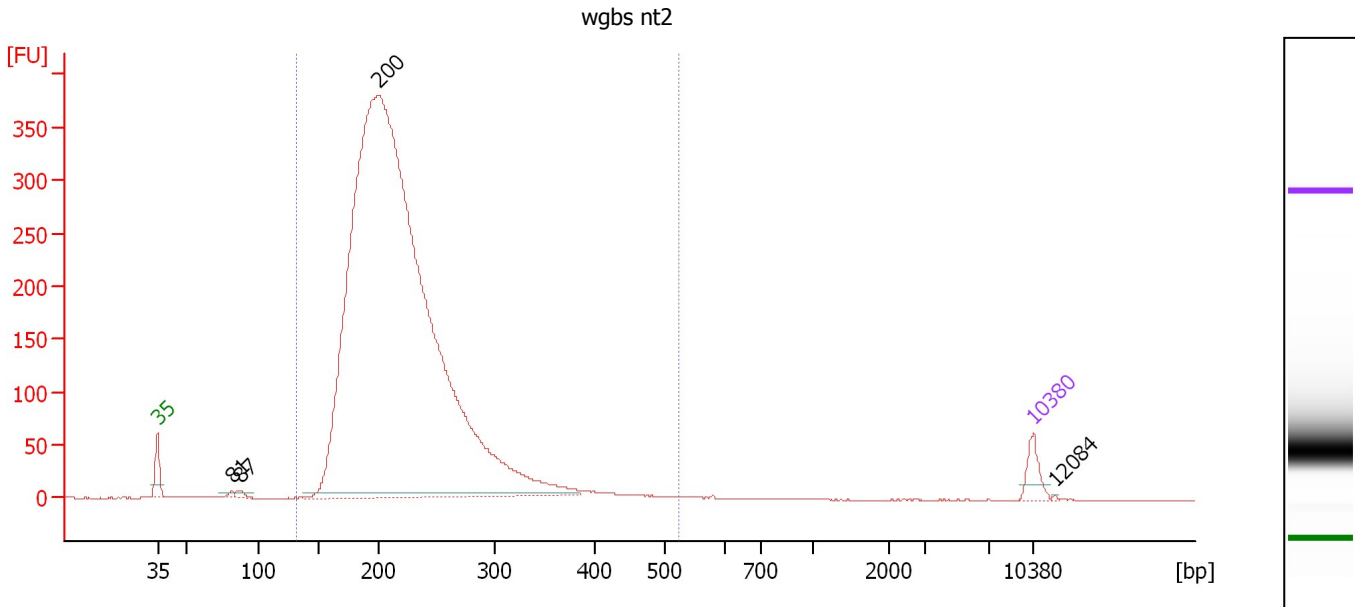
Region table for sample 5 : drip lib ags trex1

From [bp]	To [bp]	Average Size [bp]	Molarity [pmol/l]	Conc. [pg/μl]	Corr. Area	% of Total	Size distribution in CV [%]	Color
200	1,000	351	211,248.5	43,377.20	7,949.3	88	40.0	Blue

Assay Class: High Sensitivity DNA Assay
 Data Path: C:\...ents and Settings\Bioanalyzer\2013-06-27\2013-06-27_001.xad

Created: 6/27/2013 10:31:52 AM
 Modified: 6/27/2013 11:13:11 AM

Electropherogram Summary Continued ...



Overall Results for sample 6 : wgbs nt2

Number of peaks found: 4 Corr. Area 1: 4,666.8
 Noise: 0.2

Peak table for sample 6 : wgbs nt2

Peak	Size [bp]	Conc. [pg/μl]	Molarity [pmol/l]	Observations
1	35	125.00	5,411.3	Lower Marker
2	81	20.25	376.9	
3	87	27.36	477.3	
4	200	10,081.25	76,380.2	
5	10,380	75.00	10.9	Upper Marker
6	12,084	0.00	0.0	

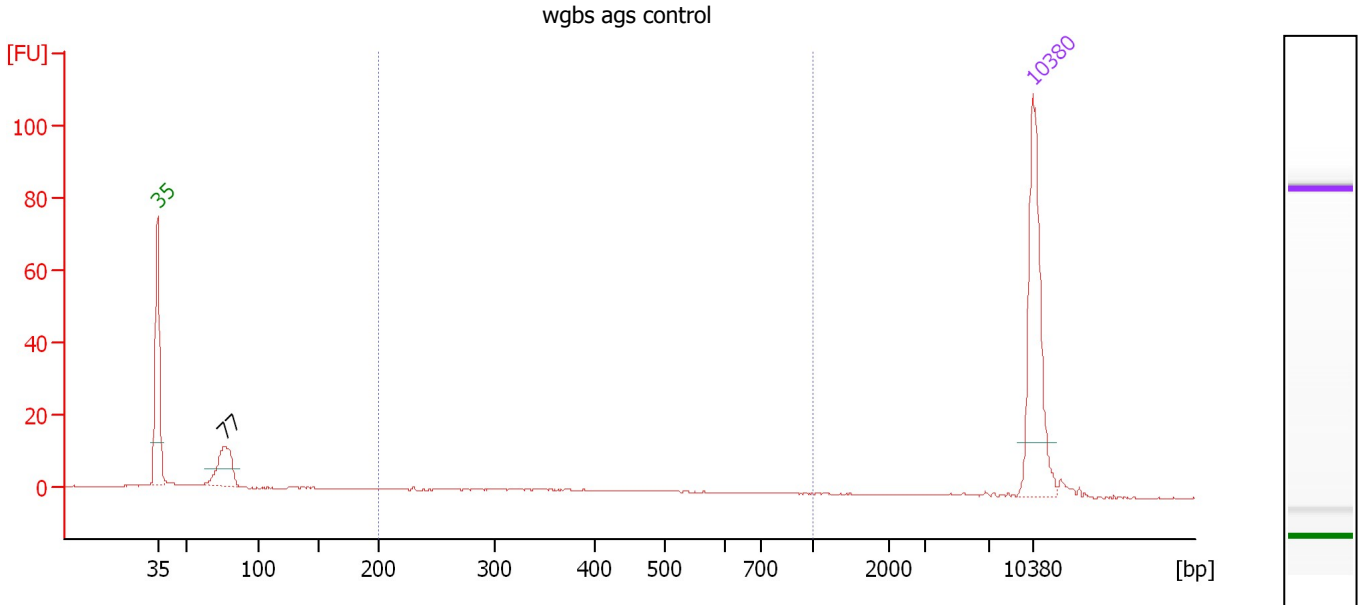
Region table for sample 6 : wgbs nt2

From [bp]	To [bp]	Average Size [bp]	Molarity [pmol/l]	Conc. [pg/μl]	Corr. Area	% of Total	Size distribution in CV [%]	Color
132	523	222	70,332.5	9,899.51	4,666.8	99	21.1	Blue

Assay Class: High Sensitivity DNA Assay
 Data Path: C:\...ents and Settings\Bioanalyzer\2013-06-27\2013-06-27_001.xad

Created: 6/27/2013 10:31:52 AM
 Modified: 6/27/2013 11:13:11 AM

Electropherogram Summary Continued ...



Overall Results for sample 7 : wgbs ags control

Number of peaks found: 1 Corr. Area 1: 18.3
 Noise: 0.1

Peak table for sample 7 : wgbs ags control

Peak	Size [bp]	Conc. [pg/μl]	Molarity [pmol/l]	Observations
1	35	125.00	5,411.3	Lower Marker
2	77	44.74	885.5	
3	10,380	75.00	10.9	Upper Marker

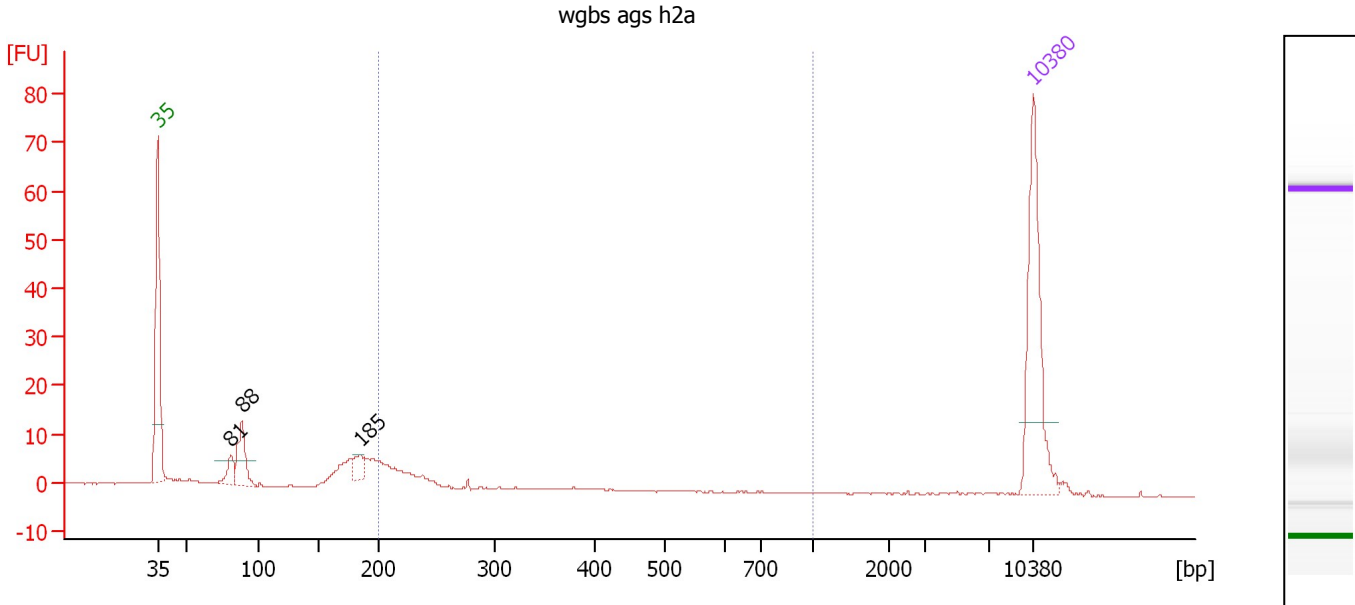
Region table for sample 7 : wgbs ags control

From [bp]	To [bp]	Average Size [bp]	Molarity [pmol/l]	Conc. [pg/μl]	Corr. Area	% of Total	Size distribution in CV [%]	Color
200	1,000	435	77.5	18.54	18.3	22	37.9	Blue

Assay Class: High Sensitivity DNA Assay
 Data Path: C:\...ents and Settings\Bioanalyzer\2013-06-27\2013-06-27_001.xad

Created: 6/27/2013 10:31:52 AM
 Modified: 6/27/2013 11:13:11 AM

Electropherogram Summary Continued ...



Overall Results for sample 8 : wgbs ags h2a

Number of peaks found: 3 Corr. Area 1: 26.2
 Noise: 0.1

Peak table for sample 8 : wgbs ags h2a

Peak	Size [bp]	Conc. [pg/μl]	Molarity [pmol/l]	Observations
1	35	125.00	5,411.3	Lower Marker
2	81	14.35	268.2	
3	88	37.71	647.2	
4	185	14.27	116.8	
5	10,380	75.00	10.9	Upper Marker

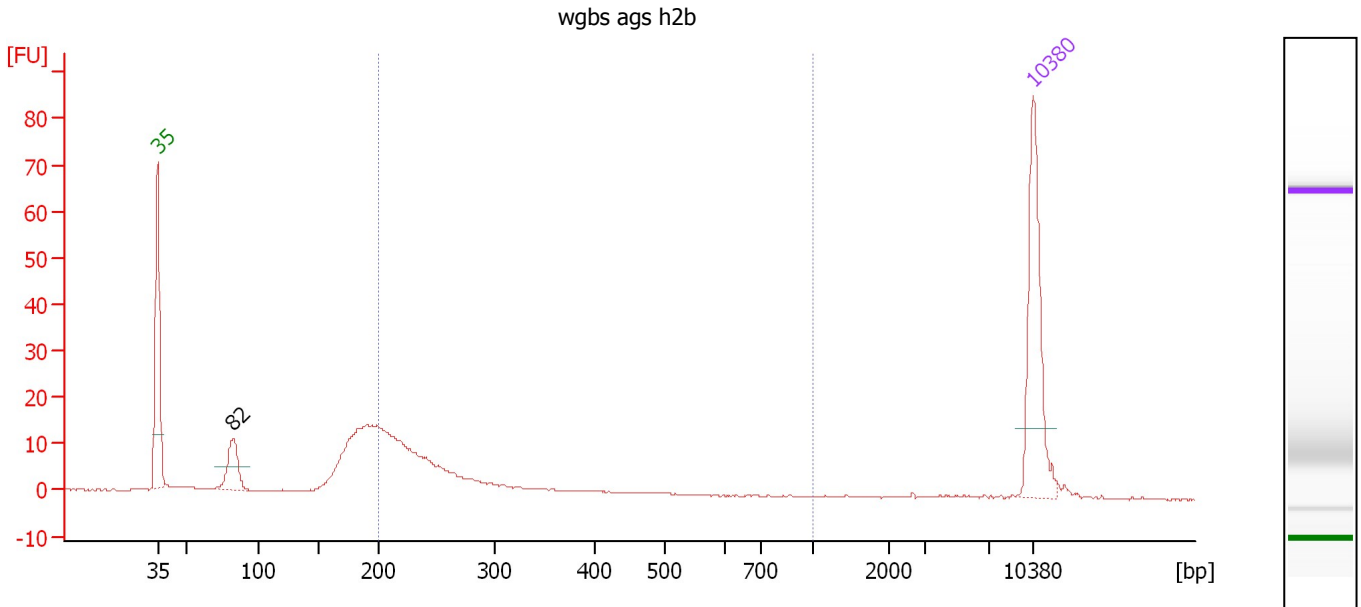
Region table for sample 8 : wgbs ags h2a

From [bp]	To [bp]	Average Size [bp]	Molarity [pmol/l]	Conc. [pg/μl]	Corr. Area	% of Total	Size distribution in CV [%]	Color
200	1,000	232	284.0	42.34	26.2	25	20.5	Blue

Assay Class: High Sensitivity DNA Assay
 Data Path: C:\...ents and Settings\Bioanalyzer\2013-06-27\2013-06-27_001.xad

Created: 6/27/2013 10:31:52 AM
 Modified: 6/27/2013 11:13:11 AM

Electropherogram Summary Continued ...



Overall Results for sample 9 : wgbs ags h2b

Number of peaks found: 1 Corr. Area 1: 116.0
 Noise: 0.1

Peak table for sample 9 : wgbs ags h2b

Peak	Size [bp]	Conc. [pg/μl]	Molarity [pmol/l]	Observations
1	35	125.00	5,411.3	Lower Marker
2	82	41.87	770.1	
3	10,380	75.00	10.9	Upper Marker

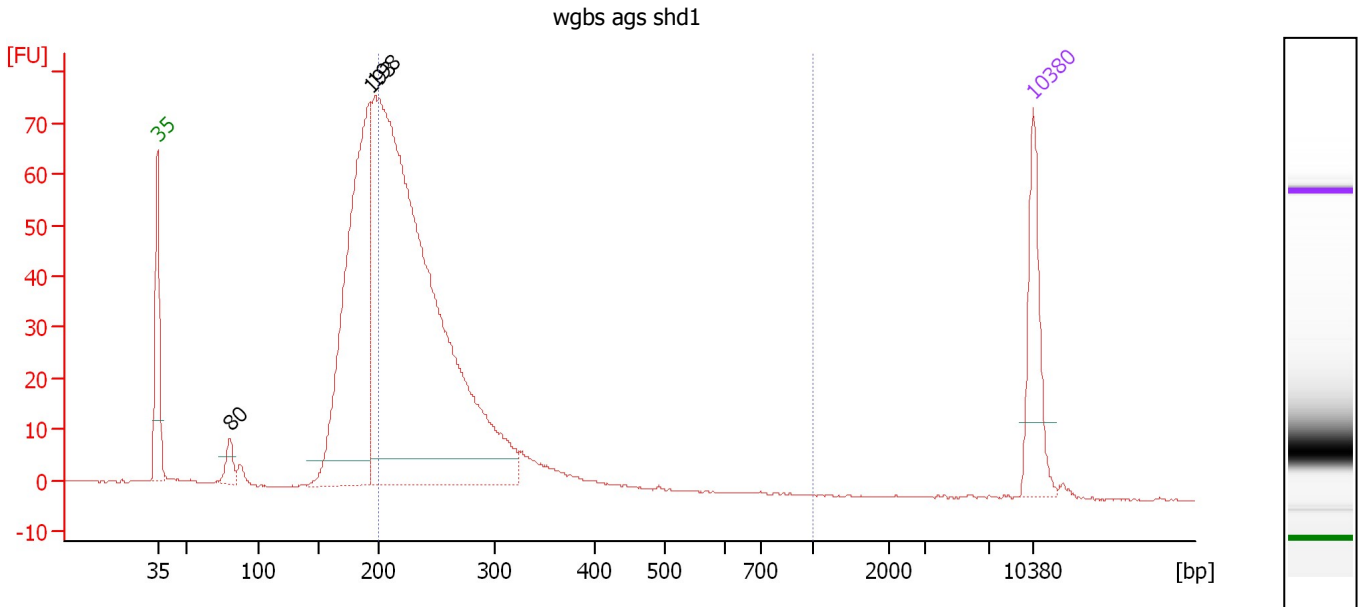
Region table for sample 9 : wgbs ags h2b

From [bp]	To [bp]	Average Size [bp]	Molarity [pmol/l]	Conc. [pg/μl]	Corr. Area	% of Total	Size distribution in CV [%]	Color
200	1,000	255	1,083.5	174.17	116.0	50	24.2	Blue

Assay Class: High Sensitivity DNA Assay
 Data Path: C:\...ents and Settings\Bioanalyzer\2013-06-27\2013-06-27_001.xad

Created: 6/27/2013 10:31:52 AM
 Modified: 6/27/2013 11:13:11 AM

Electropherogram Summary Continued ...



Overall Results for sample 10 : wgbs ags shd1

Number of peaks found: 3 Corr. Area 1: 651.7
 Noise: 0.1

Peak table for sample 10 : wgbs ags shd1

Peak	Size [bp]	Conc. [pg/μl]	Molarity [pmol/l]	Observations
1	35	125.00	5,411.3	Lower Marker
2	80	26.38	499.4	
3	193	533.35	4,187.4	
4	198	1,328.05	10,184.3	
5	10,380	75.00	10.9	Upper Marker

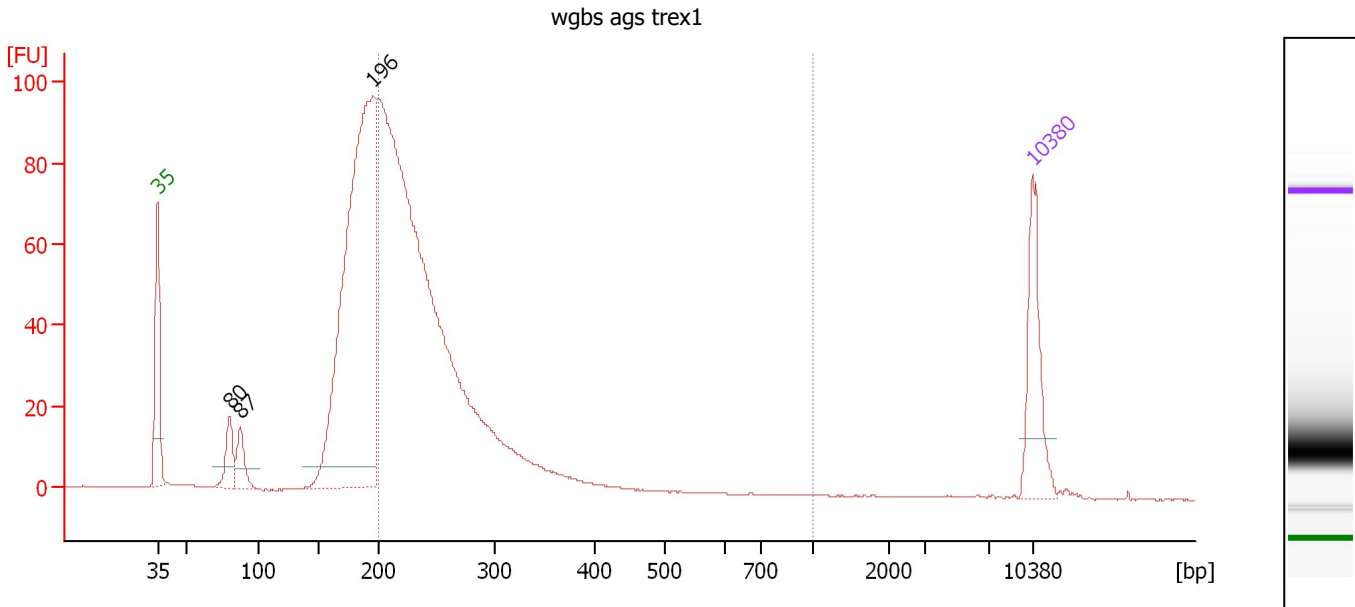
Region table for sample 10 : wgbs ags shd1

From [bp]	To [bp]	Average Size [bp]	Molarity [pmol/l]	Conc. [pg/μl]	Corr. Area	% of Total	Size distribution in CV [%]	Color
200	1,000	246	7,272.6	1,156.61	651.7	63	17.5	Blue

Assay Class: High Sensitivity DNA Assay
 Data Path: C:\...ents and Settings\Bioanalyzer\2013-06-27\2013-06-27_001.xad

Created: 6/27/2013 10:31:52 AM
 Modified: 6/27/2013 11:13:11 AM

Electropherogram Summary Continued ...



Overall Results for sample 11 : wgbs ags trex1

Number of peaks found: 3 Corr. Area 1: 811.3
 Noise: 0.1

Peak table for sample 11 : wgbs ags trex1

Peak	Size [bp]	Conc. [pg/μl]	Molarity [pmol/l]	Observations
1	35	125.00	5,411.3	Lower Marker
2	80	47.04	890.5	
3	87	42.64	739.8	
4	196	774.48	5,986.3	
5	10,380	75.00	10.9	Upper Marker

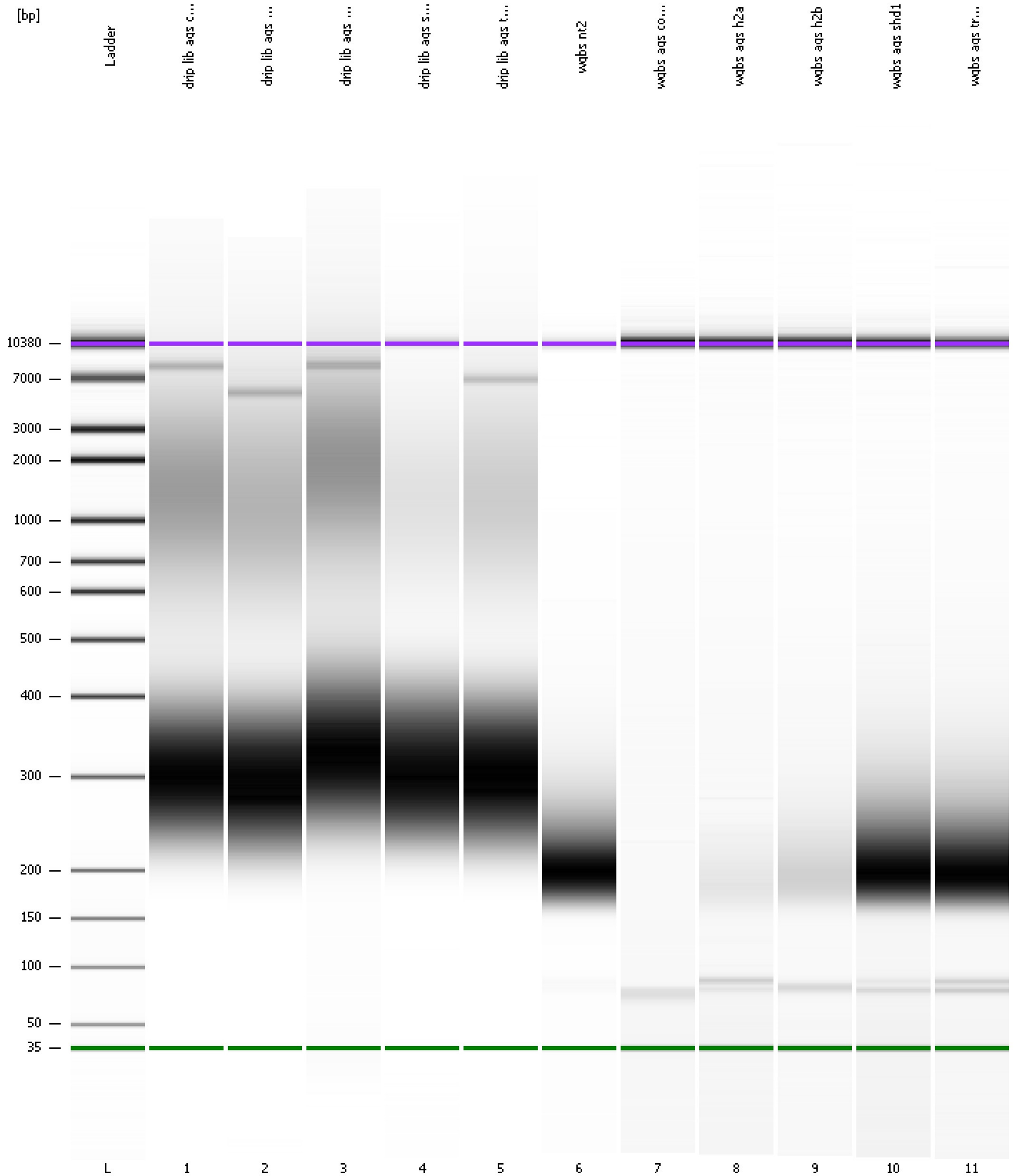
Region table for sample 11 : wgbs ags trex1

From [bp]	To [bp]	Average Size [bp]	Molarity [pmol/l]	Conc. [pg/μl]	Corr. Area	% of Total	Size distribution in CV [%]	Color
200	1,000	249	8,086.4	1,288.99	811.3	60	21.6	Blue

Assay Class: High Sensitivity DNA Assay
Data Path: C:\...ents and Settings\Bioanalyzer\2013-06-27\2013-06-27_001.xad

Created: 6/27/2013 10:31:52 AM
Modified: 6/27/2013 11:13:11 AM

Gel Image

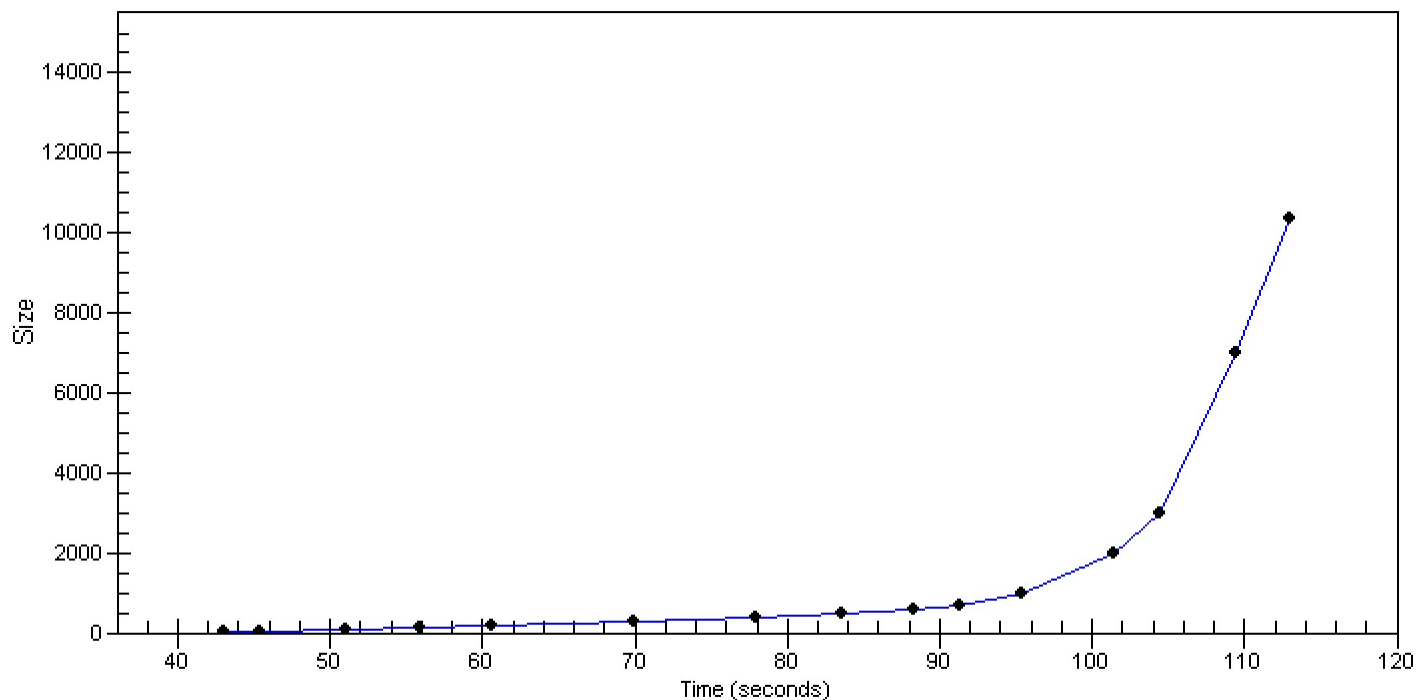


Assay Class: High Sensitivity DNA Assay
Data Path: C:\...ents and Settings\Bioanalyzer\2013-06-27\2013-06-27_001.xad

Created: 6/27/2013 10:31:52 AM
Modified: 6/27/2013 11:13:11 AM

Curves

Standard Curve



Assay Class: High Sensitivity DNA Assay
 Data Path: C:\...ents and Settings\Bioanalyzer\2013-06-27\2013-06-27_001.xad

Created: 6/27/2013 10:31:52 AM
 Modified: 6/27/2013 11:13:11 AM

Run Logbook

Description	Number	Source	Category	Sub Category	Time	Time Zone	User	Host
Run ended on port 1 (Number of wells acquired: 12)		Instrument	Run		6/27/2013 11:13:08 AM	(GMT --07:00) Pacific Standard Time	UC Davis	D8XSMGH1
Run started on port 1 (File: C:\Documents and Settings\Bioanalyzer\2013-06-27\2013-06-27_001.xad)		Instrument	Run		6/27/2013 10:31:57 AM	(GMT --07:00) Pacific Standard Time	UC Davis	D8XSMGH1
Product Number : G2938B		Instrument	Run		6/27/2013 10:31:57 AM	(GMT --07:00) Pacific Standard Time	UC Davis	D8XSMGH1
Name :		Instrument	Run		6/27/2013 10:31:57 AM	(GMT --07:00) Pacific Standard Time	UC Davis	D8XSMGH1
Vendor : Agilent Technologies		Instrument	Run		6/27/2013 10:31:57 AM	(GMT --07:00) Pacific Standard Time	UC Davis	D8XSMGH1
Serial# : DE13701086		Instrument	Run		6/27/2013 10:31:57 AM	(GMT --07:00) Pacific Standard Time	UC Davis	D8XSMGH1
Firmware : C.01.069		Instrument	Run		6/27/2013 10:31:57 AM	(GMT --07:00) Pacific Standard Time	UC Davis	D8XSMGH1
Cartridge : Electrode		Instrument	Run		6/27/2013 10:31:57 AM	(GMT --07:00) Pacific Standard Time	UC Davis	D8XSMGH1