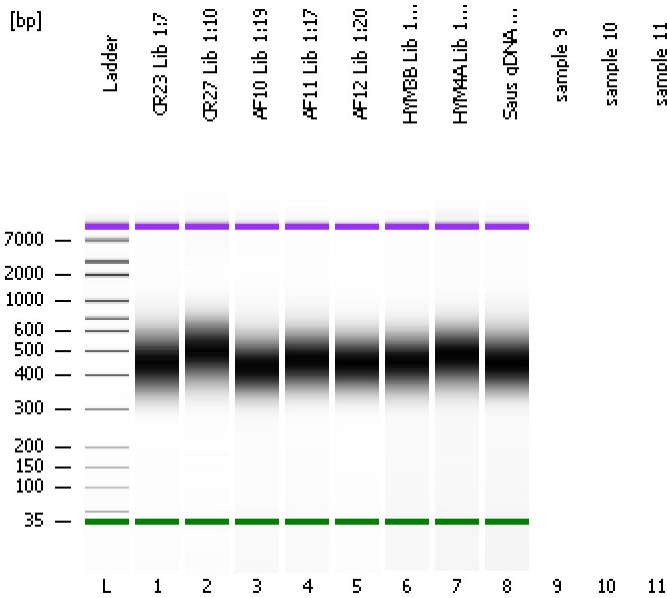


Assay Class: High Sensitivity DNA Assay  
Data Path: C:\...ents and Settings\Bioanalyzer\2013-06-27\2013-06-27\_003.xad

Created: 6/27/2013 4:56:23 PM  
Modified: 6/27/2013 5:32:41 PM

**Electrophoresis File Run Summary**



Instrument Information:

Instrument Name: DE13701086      Firmware: C.01.069  
Serial#: DE13701086      Type: G2938B

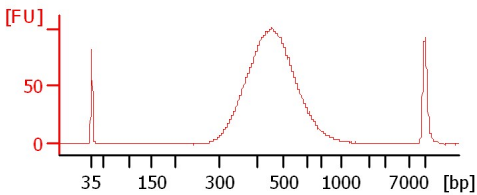
Assay Information:

Assay Origin Path: C:\Program Files\Agilent\2100 bioanalyzer\2100 expert\assays\dsDNA\High Sensitivity DNA.xsy  
Assay Class: High Sensitivity DNA Assay  
Version: 1.03  
Assay Comments: Copyright © 2003-2010 Agilent Technologies

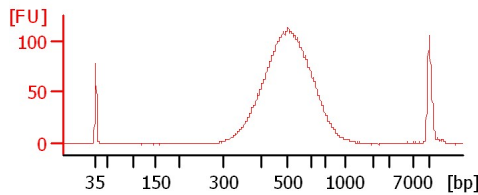
Chip Information:

Chip Lot #:   
Reagent Kit Lot #:   
Chip Comments:

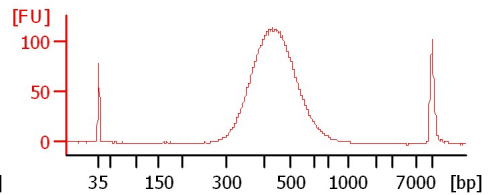
**CR23 Lib 1:7**



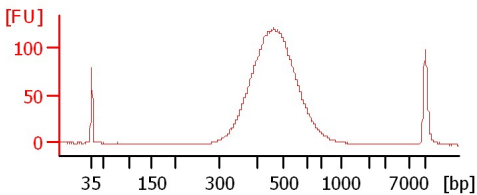
**CR27 Lib 1:10**



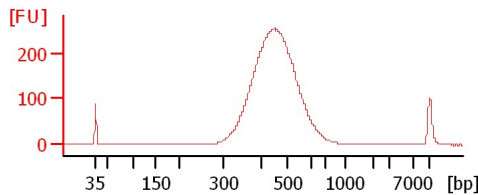
**AF10 Lib 1:19**



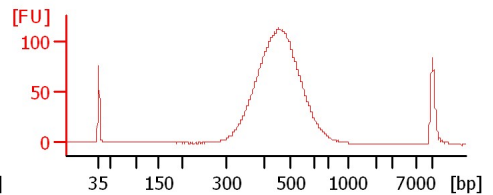
**AF11 Lib 1:17**



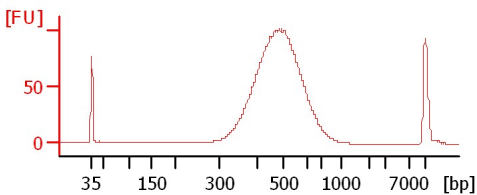
**AF12 Lib 1:20**



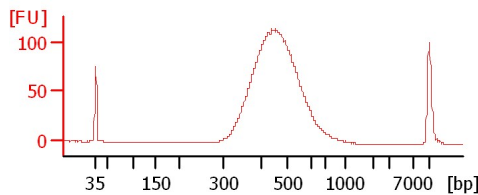
**HYM3B Lib 1:20**



**HYM4A Lib 1:15**



**Saus gDNA Lib 1:11**



Assay Class: High Sensitivity DNA Assay  
Data Path: C:\...ents and Settings\Bioanalyzer\2013-06-27\2013-06-27\_003.xad

Created: 6/27/2013 4:56:23 PM  
Modified: 6/27/2013 5:32:41 PM

**Electrophoresis File Run Summary (Chip Summary)**

Sample Name	Sample Comment	Rest. Digest	Status	Observation	Result Label	Result Color
CR23 Lib 1:7		<input type="checkbox"/>	✓			
CR27 Lib 1:10		<input type="checkbox"/>	✓			
AF10 Lib 1:19		<input type="checkbox"/>	✓			
AF11 Lib 1:17		<input type="checkbox"/>	✓			
AF12 Lib 1:20		<input type="checkbox"/>	✓			
HYM3B Lib 1:20		<input type="checkbox"/>	✓			
HYM4A Lib 1:15		<input type="checkbox"/>	✓			
Saus gDNA Lib 1:11		<input type="checkbox"/>	✓			
sample 9		<input type="checkbox"/>				
sample 10		<input type="checkbox"/>				
sample 11		<input type="checkbox"/>				
Ladder		<input type="checkbox"/>	✓			

**Chip Lot #**

**Reagent Kit Lot #**

**Chip Comments :**

Assay Class: High Sensitivity DNA Assay  
Data Path: C:\...ents and Settings\Bioanalyzer\2013-06-27\2013-06-27\_003.xad

Created: 6/27/2013 4:56:23 PM  
Modified: 6/27/2013 5:32:41 PM

**Electrophoresis Assay Details**

**General Analysis Settings**

Number of Available Sample and Ladder Wells (Max.) : 12  
Minimum Visible Range [s] : 32  
Maximum Visible Range [s] : 138  
Start Analysis Time Range [s] : 33  
End Analysis Time Range [s] : 137.5  
Ladder Concentration [pg/μl] : 1950  
Uses Standard Area for Ladder Fragments  
Lower Marker Concentration [pg/μl] : 125  
Upper Marker Concentration [pg/μl] : 75  
Used Upper Marker for Quantitation  
Standard Curve Fit is Point to Point  
Show Data Aligned to Lower and Upper Marker

**Integrator Settings**

Integration Start Time [s] : 33.05  
Integration End Time [s] : 137  
Slope Threshold : 0.8  
Height Threshold [FU] : 5  
Area Threshold : 0.1  
Width Threshold [s] : 0.6  
Baseline Plateau [s] : 0.5

**Filter Settings**

Filter Width [s] : 0.5  
Polynomial Order : 4

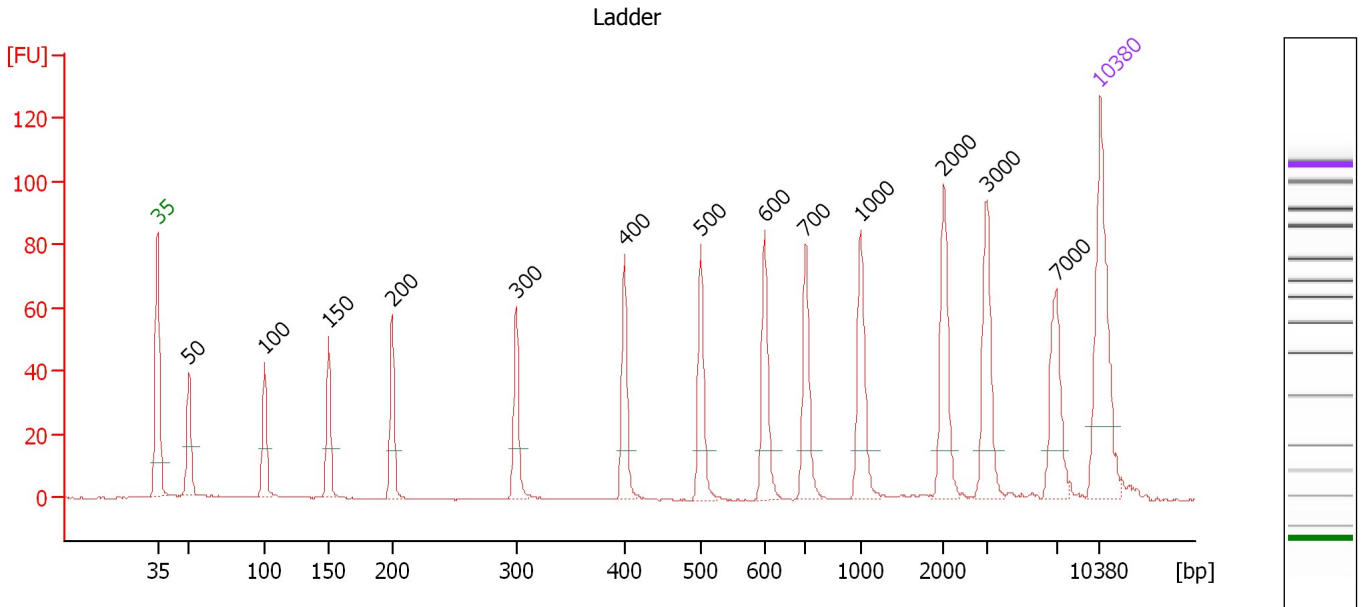
**Ladder**

Ladder Peak	Size	Area
1	35	160
2	50	210
3	100	208
4	150	221
5	200	242
6	300	270
7	400	305
8	500	306
9	600	336
10	700	321
11	1000	366
12	2000	413
13	3000	411
14	7000	400
15	10380	214

Assay Class: High Sensitivity DNA Assay  
 Data Path: C:\...ents and Settings\Bioanalyzer\2013-06-27\2013-06-27\_003.xad

Created: 6/27/2013 4:56:23 PM  
 Modified: 6/27/2013 5:32:41 PM

**Electropherogram Summary**



**Overall Results for Ladder**

Noise: 0.2

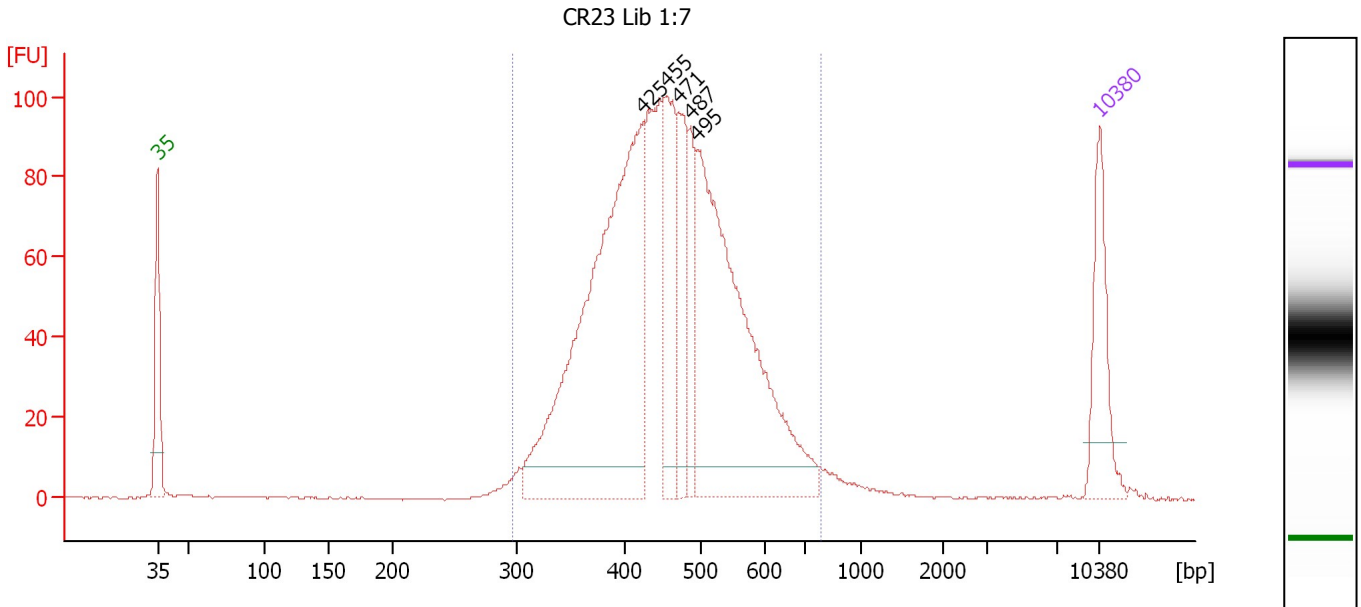
**Peak table for Ladder**

Peak	Size [bp]	Conc. [pg/μl]	Molarity [pmol/l]	Observations
1	35	125.00	5,411.3	Lower Marker
2	50	150.00	4,545.5	Ladder Peak
3	100	150.00	2,272.7	Ladder Peak
4	150	150.00	1,515.2	Ladder Peak
5	200	150.00	1,136.4	Ladder Peak
6	300	150.00	757.6	Ladder Peak
7	400	150.00	568.2	Ladder Peak
8	500	150.00	454.5	Ladder Peak
9	600	150.00	378.8	Ladder Peak
10	700	150.00	324.7	Ladder Peak
11	1,000	150.00	227.3	Ladder Peak
12	2,000	150.00	113.6	Ladder Peak
13	3,000	150.00	75.8	Ladder Peak
14	7,000	150.00	32.5	Ladder Peak
15	10,380	75.00	10.9	Upper Marker

Assay Class: High Sensitivity DNA Assay  
 Data Path: C:\...ents and Settings\Bioanalyzer\2013-06-27\2013-06-27\_003.xad

Created: 6/27/2013 4:56:23 PM  
 Modified: 6/27/2013 5:32:41 PM

**Electropherogram Summary Continued ...**



**Setpoint Deviations for sample 1 : CR23 Lib 1:7**

Height Threshold [FU] : 8

**Overall Results for sample 1 : CR23 Lib 1:7**

Number of peaks found: 5                      Corr. Area 1: 1,535.6  
 Noise: 0.2

**Peak table for sample 1 : CR23 Lib 1:7**

Peak	Size [bp]	Conc. [pg/μl]	Molarity [pmol/l]	Observations
1	35	125.00	5,411.3	Lower Marker
2	425	644.06	2,297.1	
3	455	146.25	487.4	
4	471	109.76	353.3	
5	487	75.91	236.3	
6	495	509.33	1,558.7	
7	10,380	75.00	10.9	Upper Marker

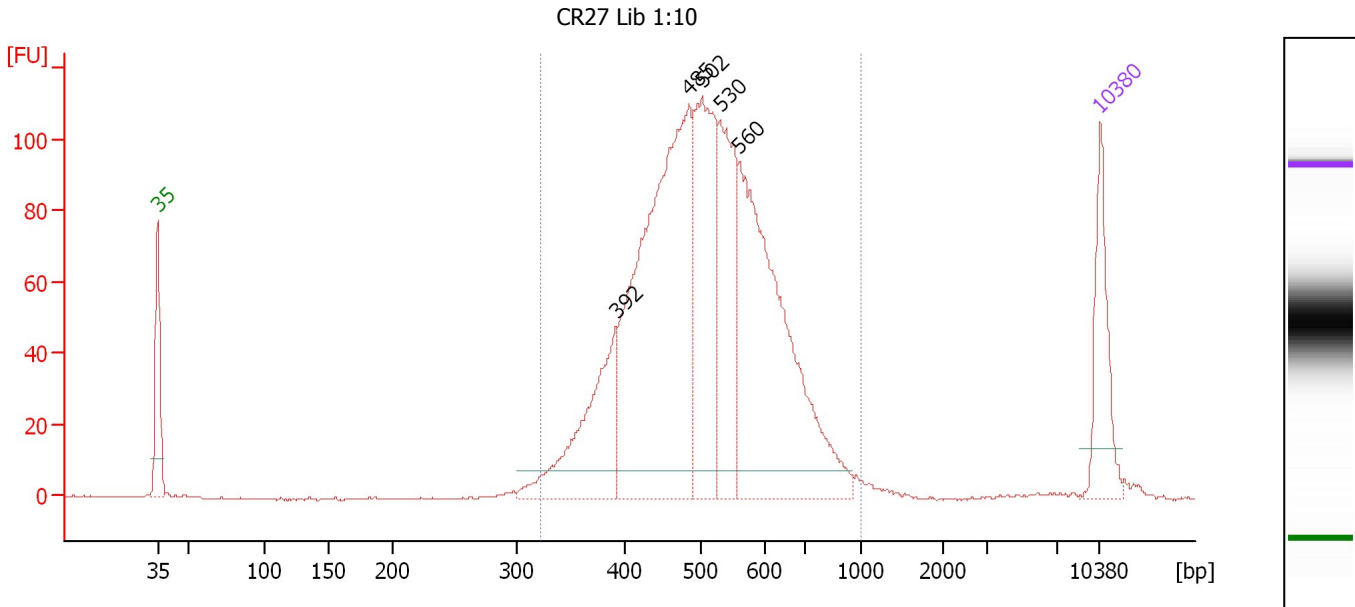
**Region table for sample 1 : CR23 Lib 1:7**

From [bp]	To [bp]	Average Size [bp]	Molarity [pmol/l]	Conc. [pg/μl]	Corr. Area	% of Total	Size distribution in CV [%]	Color
297	780	461	5,807.9	1,696.35	1,535.6	97	18.1	Blue

Assay Class: High Sensitivity DNA Assay  
 Data Path: C:\...ents and Settings\Bioanalyzer\2013-06-27\2013-06-27\_003.xad

Created: 6/27/2013 4:56:23 PM  
 Modified: 6/27/2013 5:32:41 PM

**Electropherogram Summary Continued ...**



**Setpoint Deviations for sample 2 : CR27 Lib 1:10**

Height Threshold [FU] : 8

**Overall Results for sample 2 : CR27 Lib 1:10**

Number of peaks found: 5                      Corr. Area 1: 1,641.4  
 Noise: 0.3

**Peak table for sample 2 : CR27 Lib 1:10**

Peak	Size [bp]	Conc. [pg/μl]	Molarity [pmol/l]	Observations
1	35	125.00	5,411.3	Lower Marker
2	392	192.56	743.6	
3	485	603.37	1,886.3	
4	502	258.43	780.1	
5	530	185.65	530.4	
6	560	449.53	1,217.0	
7	10,380	75.00	10.9	Upper Marker

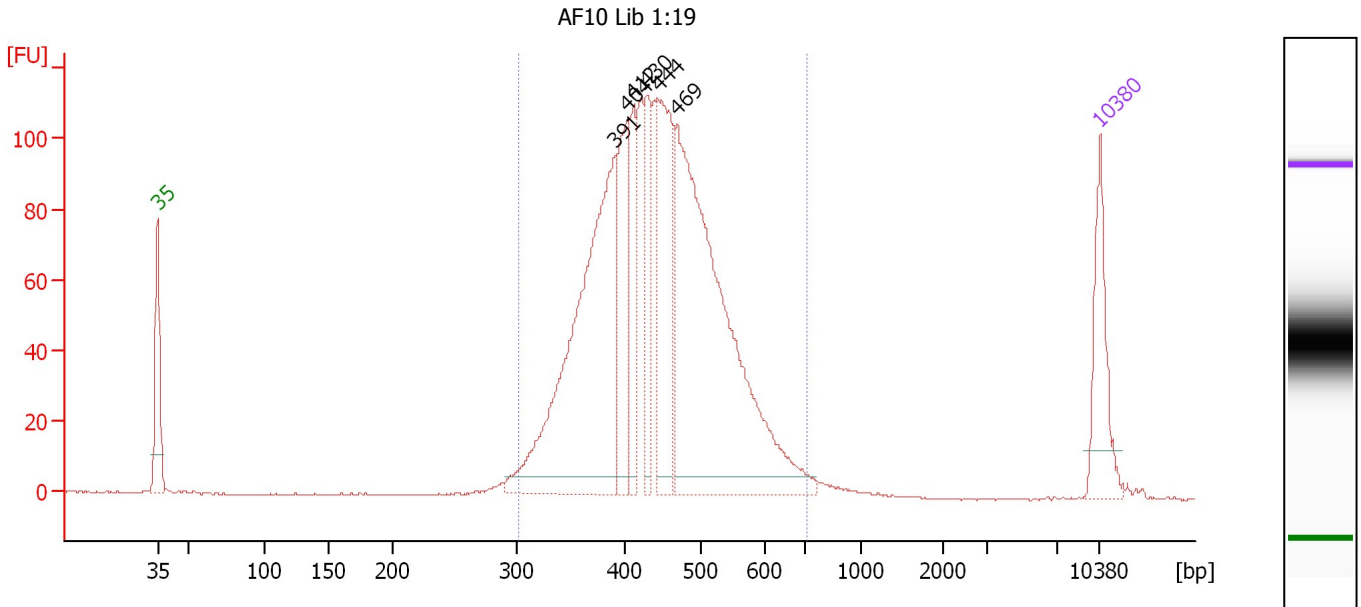
**Region table for sample 2 : CR27 Lib 1:10**

From [bp]	To [bp]	Average Size [bp]	Molarity [pmol/l]	Conc. [pg/μl]	Corr. Area	% of Total	Size distribution in CV [%]	Color
322	1,000	515	5,195.9	1,682.22	1,641.4	98	20.2	Blue

Assay Class: High Sensitivity DNA Assay  
 Data Path: C:\...ents and Settings\Bioanalyzer\2013-06-27\2013-06-27\_003.xad

Created: 6/27/2013 4:56:23 PM  
 Modified: 6/27/2013 5:32:41 PM

**Electropherogram Summary Continued ...**



**Overall Results for sample 3 : AF10 Lib 1:19**

Number of peaks found: 6                      Corr. Area 1: 1,624.2  
 Noise: 0.2

**Peak table for sample 3 : AF10 Lib 1:19**

Peak	Size [bp]	Conc. [pg/μl]	Molarity [pmol/l]	Observations
1	35	125.00	5,411.3	Lower Marker
2	391	512.59	1,985.8	
3	404	135.29	507.7	
4	412	92.31	339.8	
5	430	94.28	332.6	
6	444	188.79	643.7	
7	469	634.49	2,051.7	
8	10,380	75.00	10.9	Upper Marker

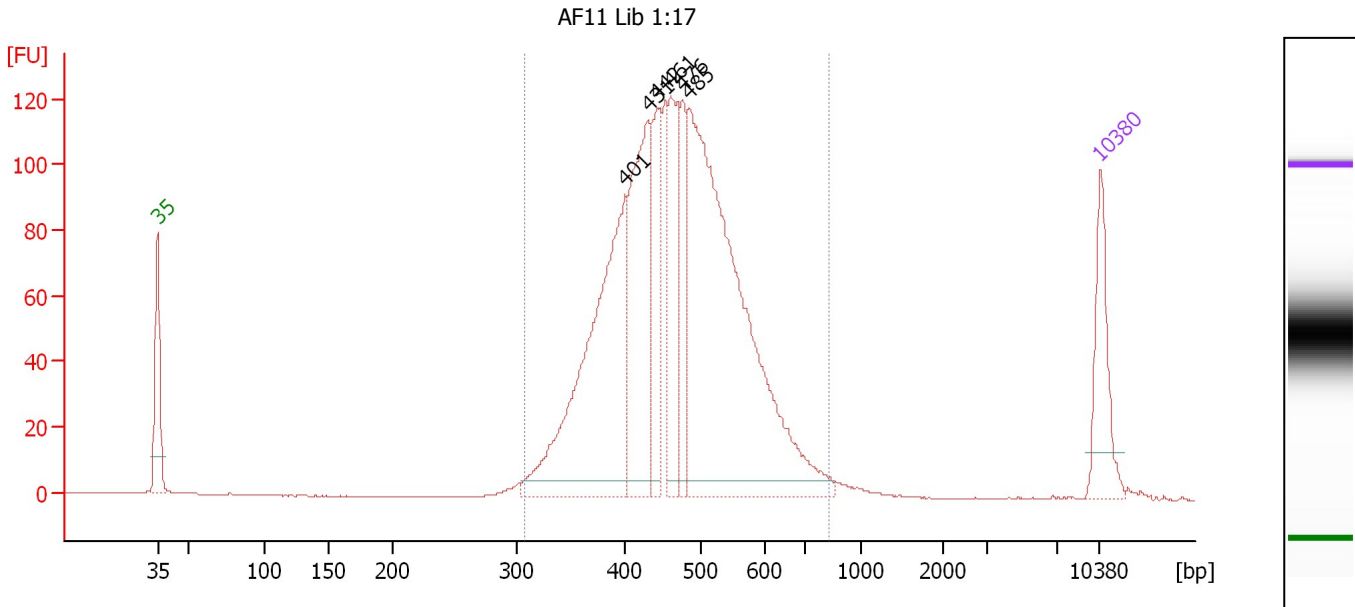
**Region table for sample 3 : AF10 Lib 1:19**

From [bp]	To [bp]	Average Size [bp]	Molarity [pmol/l]	Conc. [pg/μl]	Corr. Area	% of Total	Size distribution in CV [%]	Color
302	713	446	6,447.6	1,834.50	1,624.2	97	16.5	Blue

Assay Class: High Sensitivity DNA Assay  
 Data Path: C:\...ents and Settings\Bioanalyzer\2013-06-27\2013-06-27\_003.xad

Created: 6/27/2013 4:56:23 PM  
 Modified: 6/27/2013 5:32:41 PM

**Electropherogram Summary Continued ...**



**Overall Results for sample 4 : AF11 Lib 1:17**

Number of peaks found: 6      Corr. Area 1: 1,711.7  
 Noise: 0.1

**Peak table for sample 4 : AF11 Lib 1:17**

Peak	Size [bp]	Conc. [pg/μl]	Molarity [pmol/l]	Observations
1	35	125.00	5,411.3	Lower Marker
2	401	449.92	1,700.2	
3	431	263.95	927.6	
4	442	127.11	435.5	
5	461	144.69	476.0	
6	476	96.67	307.4	
7	485	745.26	2,327.5	
8	10,380	75.00	10.9	Upper Marker

**Region table for sample 4 : AF11 Lib 1:17**

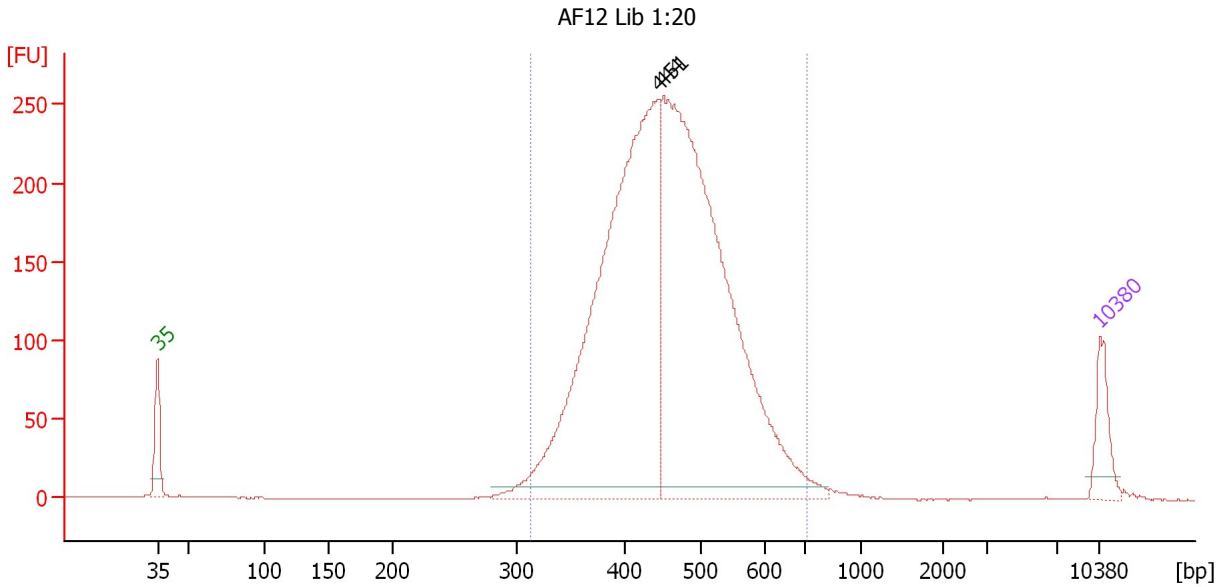
From [bp]	To [bp]	Average Size [bp]	Molarity [pmol/l]	Conc. [pg/μl]	Corr. Area	% of Total	Size distribution in CV [%]	Color
309	829	471	6,301.5	1,887.02	1,711.7	98	17.3	Blue



Assay Class: High Sensitivity DNA Assay  
 Data Path: C:\...ents and Settings\Bioanalyzer\2013-06-27\2013-06-27\_003.xad

Created: 6/27/2013 4:56:23 PM  
 Modified: 6/27/2013 5:32:41 PM

**Electropherogram Summary Continued ...**



**Setpoint Deviations for sample 5 : AF12 Lib 1:20**

Height Threshold [FU] : 8

**Overall Results for sample 5 : AF12 Lib 1:20**

Number of peaks found: 2                      Corr. Area 1: 3,456.4  
 Noise: 0.1

**Peak table for sample 5 : AF12 Lib 1:20**

Peak	Size [bp]	Conc. [pg/µl]	Molarity [pmol/l]	Observations
1	35	125.00	5,411.3	Lower Marker
2	444	1,734.52	5,912.4	
3	451	1,877.38	6,307.7	
4	10,380	75.00	10.9	Upper Marker

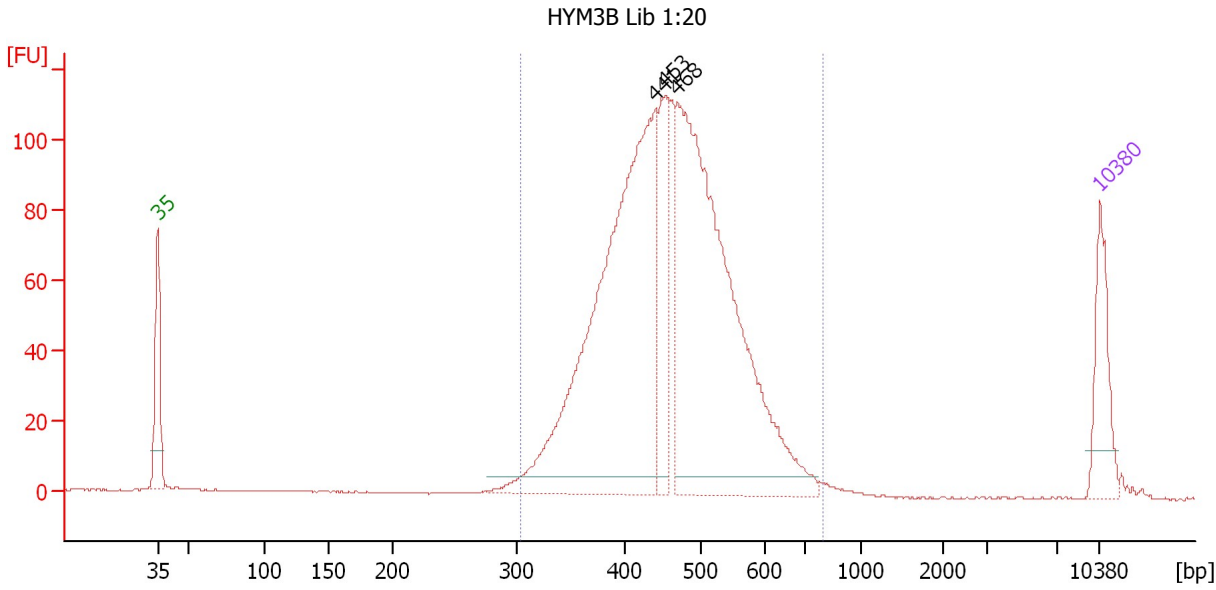
**Region table for sample 5 : AF12 Lib 1:20**

From [bp]	To [bp]	Average Size [bp]	Molarity [pmol/l]	Conc. [pg/µl]	Corr. Area	% of Total	Size distribution in CV [%]	Color
313	712	458	12,234.7	3,582.44	3,456.4	98	15.8	Blue

Assay Class: High Sensitivity DNA Assay  
 Data Path: C:\...ents and Settings\Bioanalyzer\2013-06-27\2013-06-27\_003.xad

Created: 6/27/2013 4:56:23 PM  
 Modified: 6/27/2013 5:32:41 PM

**Electropherogram Summary Continued ...**



**Overall Results for sample 6 : HYM3B Lib 1:20**

Number of peaks found: 3                      Corr. Area 1: 1,547.4  
 Noise: 0.1

**Peak table for sample 6 : HYM3B Lib 1:20**

Peak	Size [bp]	Conc. [pg/μl]	Molarity [pmol/l]	Observations
1	35	125.00	5,411.3	Lower Marker
2	441	863.49	2,968.2	
3	453	157.94	528.3	
4	468	842.38	2,724.3	
5	10,380	75.00	10.9	Upper Marker

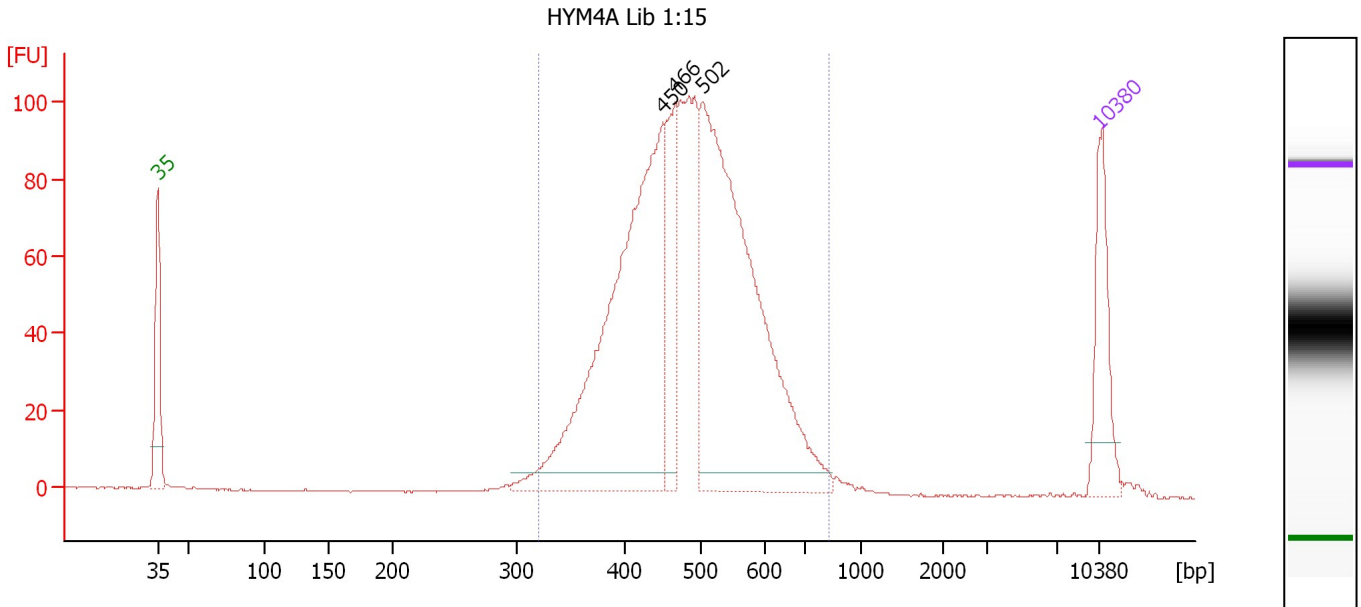
**Region table for sample 6 : HYM3B Lib 1:20**

From [bp]	To [bp]	Average Size [bp]	Molarity [pmol/l]	Conc. [pg/μl]	Corr. Area	% of Total	Size distribution in CV [%]	Color
305	794	461	6,649.9	1,956.98	1,547.4	96	16.6	Blue

Assay Class: High Sensitivity DNA Assay  
 Data Path: C:\...ents and Settings\Bioanalyzer\2013-06-27\2013-06-27\_003.xad

Created: 6/27/2013 4:56:23 PM  
 Modified: 6/27/2013 5:32:41 PM

**Electropherogram Summary Continued ...**



**Overall Results for sample 7 : HYM4A Lib 1:15**

Number of peaks found: 3                      Corr. Area 1: 1,437.0  
 Noise: 0.2

**Peak table for sample 7 : HYM4A Lib 1:15**

Peak	Size [bp]	Conc. [pg/μl]	Molarity [pmol/l]	Observations
1	35	125.00	5,411.3	Lower Marker
2	450	599.85	2,019.9	
3	466	114.52	372.0	
4	502	627.87	1,893.5	
5	10,380	75.00	10.9	Upper Marker

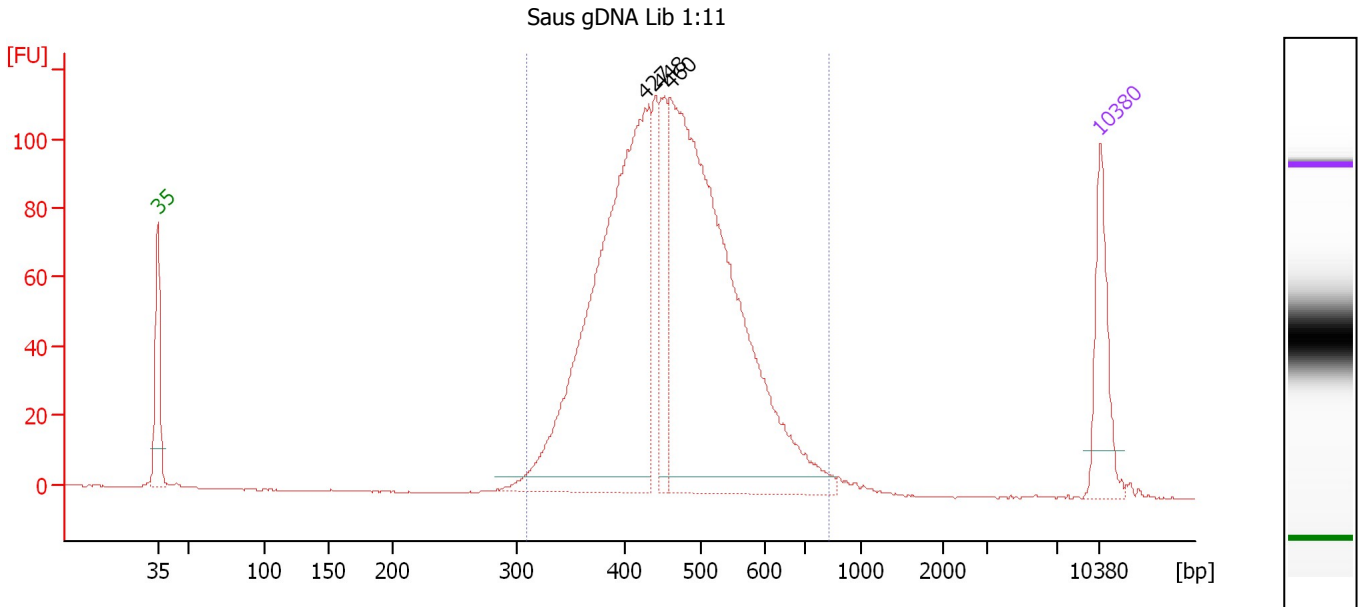
**Region table for sample 7 : HYM4A Lib 1:15**

From [bp]	To [bp]	Average Size [bp]	Molarity [pmol/l]	Conc. [pg/μl]	Corr. Area	% of Total	Size distribution in CV [%]	Color
322	829	487	5,080.3	1,573.46	1,437.0	97	17.2	Blue

Assay Class: High Sensitivity DNA Assay  
 Data Path: C:\...ents and Settings\Bioanalyzer\2013-06-27\2013-06-27\_003.xad

Created: 6/27/2013 4:56:23 PM  
 Modified: 6/27/2013 5:32:41 PM

**Electropherogram Summary Continued ...**



**Overall Results for sample 8 : Saus gDNA Lib 1:11**

Number of peaks found: 3    Corr. Area 1: 1,625.7  
 Noise: 0.2

**Peak table for sample 8 : Saus gDNA Lib 1:11**

Peak	Size [bp]	Conc. [pg/µl]	Molarity [pmol/l]	Observations
1	35	125.00	5,411.3	Lower Marker
2	427	734.94	2,605.3	
3	448	103.25	349.0	
4	460	861.63	2,838.5	
5	10,380	75.00	10.9	Upper Marker

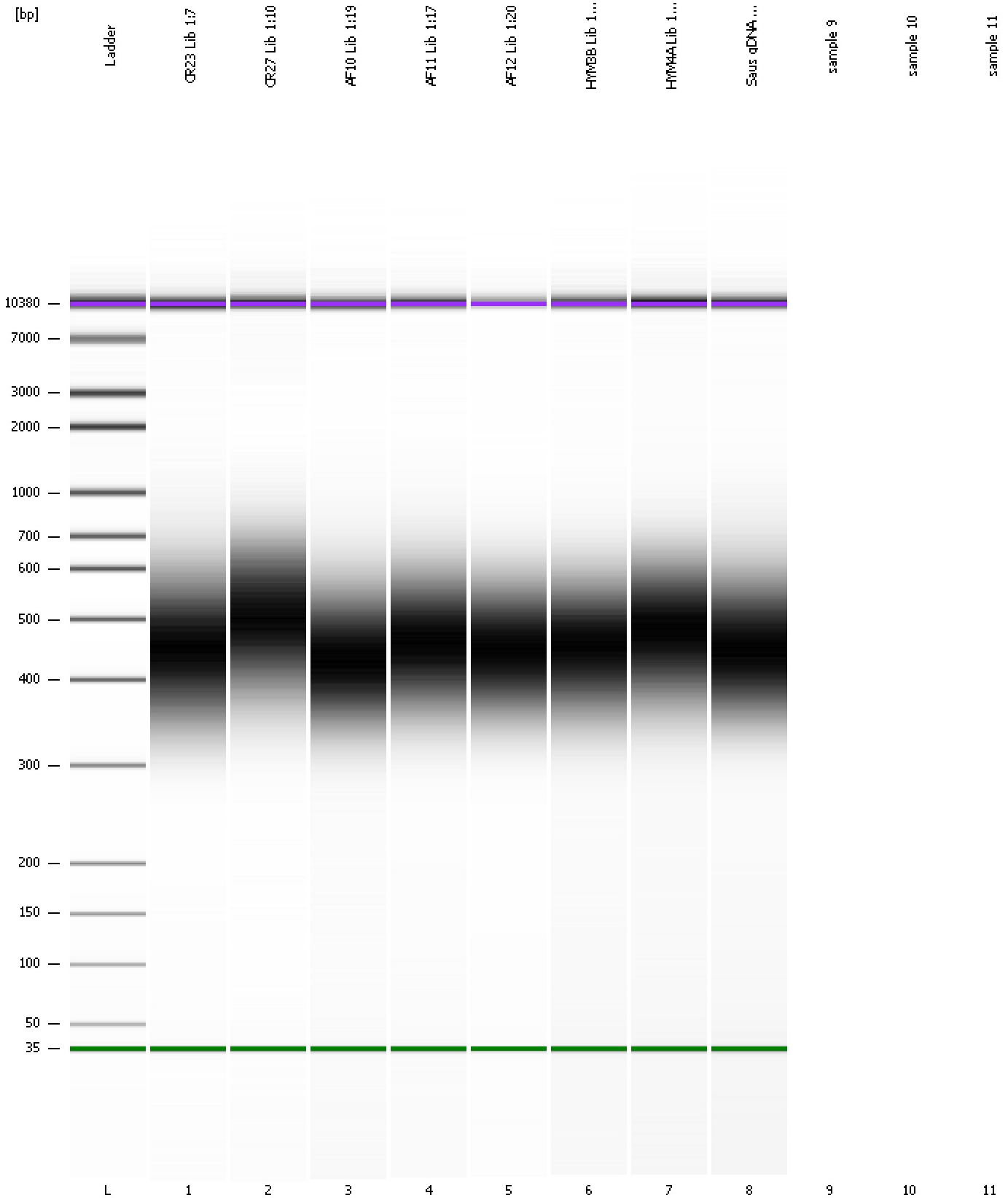
**Region table for sample 8 : Saus gDNA Lib 1:11**

From [bp]	To [bp]	Average Size [bp]	Molarity [pmol/l]	Conc. [pg/µl]	Corr. Area	% of Total	Size distribution in CV [%]	Color
311	830	464	5,968.0	1,761.84	1,625.7	98	17.6	Blue

Assay Class: High Sensitivity DNA Assay  
Data Path: C:\...ents and Settings\Bioanalyzer\2013-06-27\2013-06-27\_003.xad

Created: 6/27/2013 4:56:23 PM  
Modified: 6/27/2013 5:32:41 PM

**Gel Image**

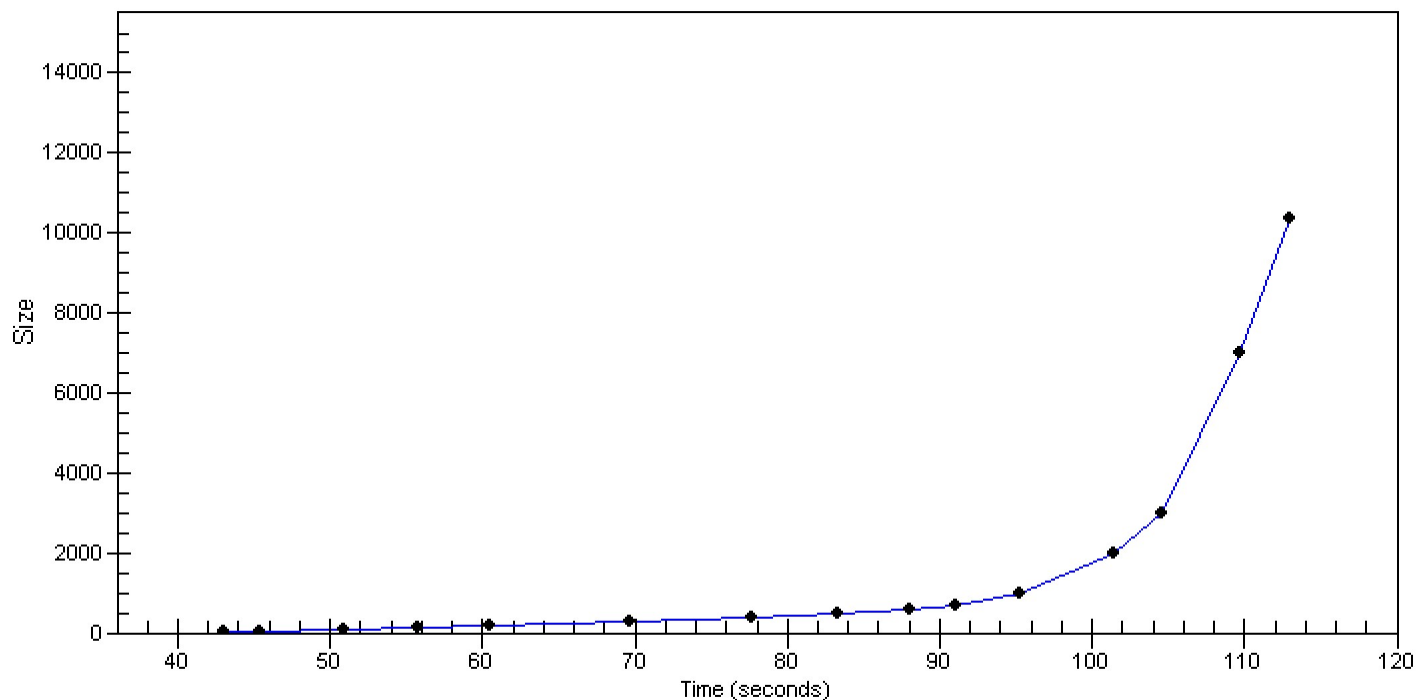


Assay Class: High Sensitivity DNA Assay  
Data Path: C:\...ents and Settings\Bioanalyzer\2013-06-27\2013-06-27\_003.xad

Created: 6/27/2013 4:56:23 PM  
Modified: 6/27/2013 5:32:41 PM

**Curves**

**Standard Curve**



Assay Class: High Sensitivity DNA Assay  
Data Path: C:\...ents and Settings\Bioanalyzer\2013-06-27\2013-06-27\_003.xad

Created: 6/27/2013 4:56:23 PM  
Modified: 6/27/2013 5:32:41 PM

**Invalid Samples**

Sample 9 has not been run, no results available.

Sample 10 has not been run, no results available.

Sample 11 has not been run, no results available.

Assay Class: High Sensitivity DNA Assay  
 Data Path: C:\...ents and Settings\Bioanalyzer\2013-06-27\2013-06-27\_003.xad

Created: 6/27/2013 4:56:23 PM  
 Modified: 6/27/2013 5:32:41 PM

**Run Logbook**

Description	Number	Source	Category	Sub Category	Time	Time Zone	User	Host
Run ended on port 1 (Number of wells acquired: 9)		Instrument	Run		6/27/2013 5:29:06 PM	(GMT --07:00) Pacific Standard Time	UC Davis	D8XSMGH1
Run started on port 1 (File: C:\Documents and Settings\Bioanalyzer\2013-06-27\2013-06-27_003.xad)		Instrument	Run		6/27/2013 4:56:28 PM	(GMT --07:00) Pacific Standard Time	UC Davis	D8XSMGH1
Product Number : G2938B		Instrument	Run		6/27/2013 4:56:28 PM	(GMT --07:00) Pacific Standard Time	UC Davis	D8XSMGH1
Name :		Instrument	Run		6/27/2013 4:56:28 PM	(GMT --07:00) Pacific Standard Time	UC Davis	D8XSMGH1
Vendor : Agilent Technologies		Instrument	Run		6/27/2013 4:56:28 PM	(GMT --07:00) Pacific Standard Time	UC Davis	D8XSMGH1
Serial# : DE13701086		Instrument	Run		6/27/2013 4:56:28 PM	(GMT --07:00) Pacific Standard Time	UC Davis	D8XSMGH1
Firmware : C.01.069		Instrument	Run		6/27/2013 4:56:28 PM	(GMT --07:00) Pacific Standard Time	UC Davis	D8XSMGH1
Cartridge : Electrode		Instrument	Run		6/27/2013 4:56:28 PM	(GMT --07:00) Pacific Standard Time	UC Davis	D8XSMGH1