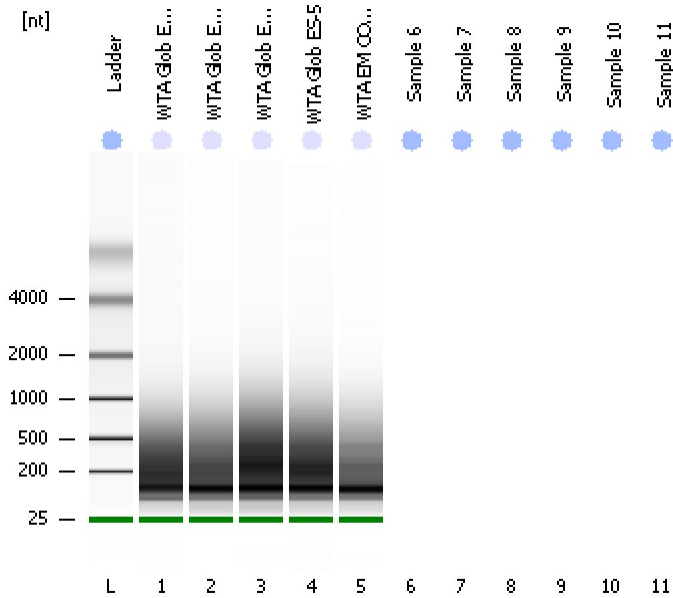


Assay Class: Eukaryote Total RNA Pico
Data Path: C:\...ents and Settings\Bioanalyzer\2013-07-02\2013-07-02_001.xad

Created: 7/2/2013 10:33:06 AM
Modified: 7/2/2013 10:47:26 AM

Electrophoresis File Run Summary



Instrument Information:

Instrument Name: DE13701086 Firmware: C.01.069
Serial#: DE13701086 Type: G2938B

Assay Information:

Assay Origin Path: C:\Program Files\Agilent\2100 bioanalyzer\2100 expert\assays\RNA\Eukaryote Total RNA Pico Series II.xsy
Assay Class: Eukaryote Total RNA Pico
Version: 2.6
Assay Comments: Total RNA Analysis pg sensitivity (Eukaryote)
© Copyright 2003 - 2009 Agilent Technologies, Inc.

Chip Information:

Chip Lot #: Reagent Kit Lot #: Chip Comments:



Assay Class: Eukaryote Total RNA Pico
 Data Path: C:\...ents and Settings\Bioanalyzer\2013-07-02\2013-07-02_001.xad

Created: 7/2/2013 10:33:06 AM
 Modified: 7/2/2013 10:47:26 AM

Electrophoresis File Run Summary (Chip Summary)

Sample Name	Sample Comment	Status	Result Label	Result Color
WTA Glob EPD-6		✓	RIN: 2.20	
WTA Glob EPD-5		✓	RIN: 2.20	
WTA Glob ENT-4		✓	RIN:2	
WTA Glob ES-5		✓	RIN:2	
WTA EM COT ABPY-5		✓	RIN: 2.10	
Sample 6				
Sample 7				
Sample 8				
Sample 9				
Sample 10				
Sample 11				
Ladder		✓	All Other Samples	

Chip Lot #

Reagent Kit Lot #

Chip Comments :

Assay Class: Eukaryote Total RNA Pico
Data Path: C:\...ents and Settings\Bioanalyzer\2013-07-02\2013-07-02_001.xad

Created: 7/2/2013 10:33:06 AM
Modified: 7/2/2013 10:47:26 AM

Electrophoresis Assay Details

General Analysis Settings

Number of Available Sample and Ladder Wells (Max.) : 12
Minimum Visible Range [s] : 17
Maximum Visible Range [s] : 70
Start Analysis Time Range [s] : 18
End Analysis Time Range [s] : 69
Ladder Concentration [pg/ μ l] : 1000
Lower Marker Concentration [pg/ μ l] : 0
Upper Marker Concentration [pg/ μ l] : 0
Used Lower Marker for Quantitation
Standard Curve Fit is Logarithmic
Show Data Aligned to Lower Marker

Integrator Settings

Integration Start Time [s] : 18
Integration End Time [s] : 69
Slope Threshold : 0.6
Height Threshold [FU] : 0.5
Area Threshold : 0.2
Width Threshold [s] : 0.3
Baseline Plateau [s] : 6

Filter Settings

Filter Width [s] : 0.5
Polynomial Order : 4

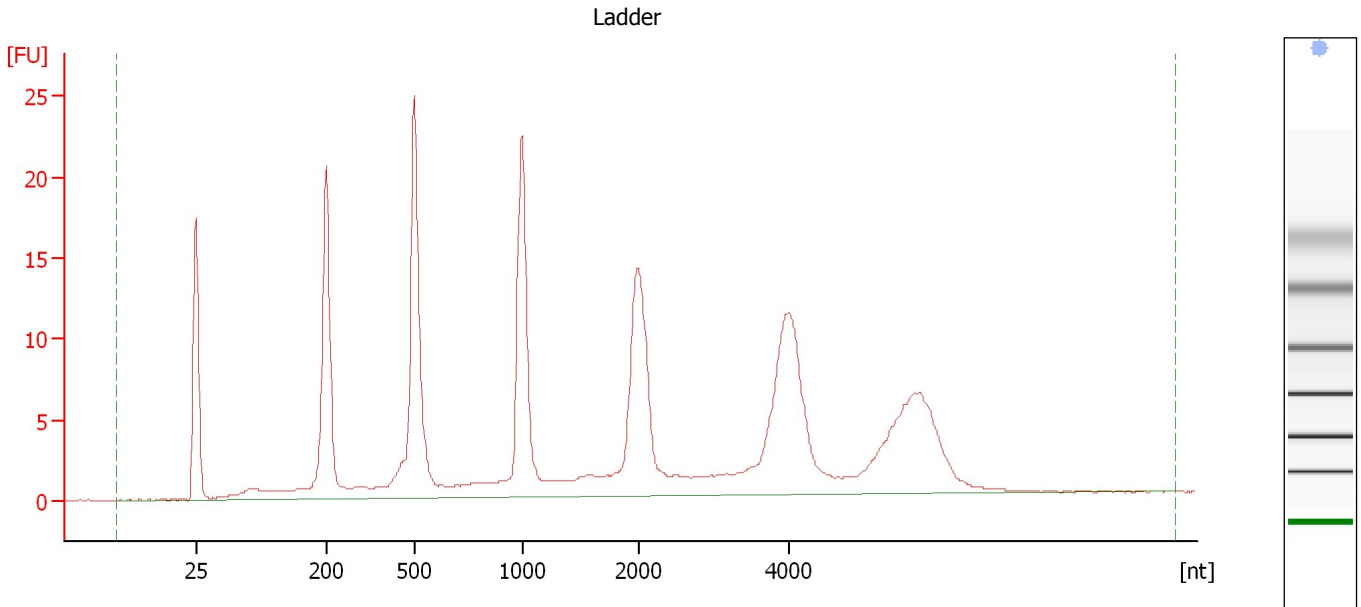
Ladder

Ladder Peak	Size
1	25
2	200
3	500
4	1000
5	2000
6	4000

Assay Class: Eukaryote Total RNA Pico
Data Path: C:\...ents and Settings\Bioanalyzer\2013-07-02\2013-07-02_001.xad

Created: 7/2/2013 10:33:06 AM
Modified: 7/2/2013 10:47:26 AM

Electropherogram Summary



Overall Results for Ladder

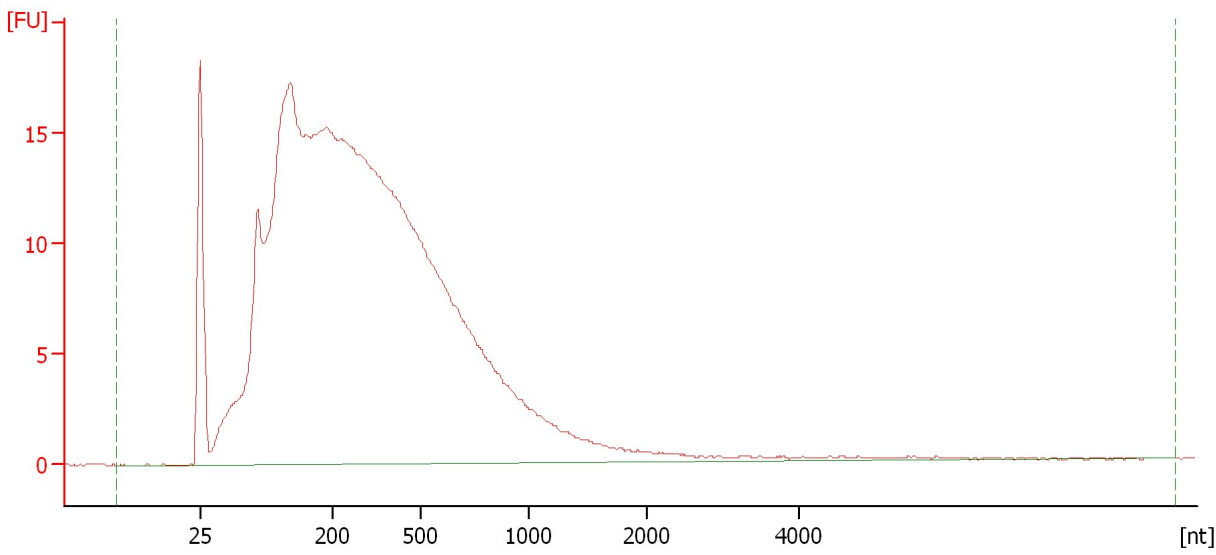
RNA Area:	245.5	Result Flagging Color:	
RNA Concentration:	1,000 pg/μl	Result Flagging Label:	All Other Samples

Assay Class: Eukaryote Total RNA Pico
Data Path: C:\...ents and Settings\Bioanalyzer\2013-07-02\2013-07-02_001.xad

Created: 7/2/2013 10:33:06 AM
Modified: 7/2/2013 10:47:26 AM

Electropherogram Summary Continued ...

WTA Glob EPD-6



Overall Results for sample 1 : WTA Glob EPD-6

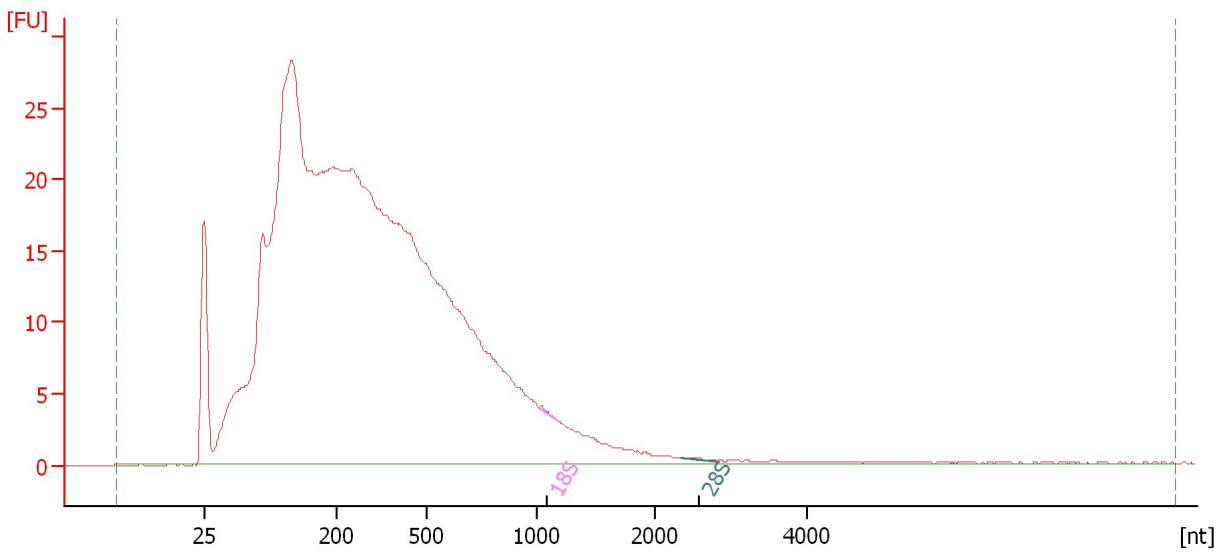
RNA Area:	483.6	RNA Integrity Number (RIN):	2.2 (B.02.08)
RNA Concentration:	1,970 pg/μl	Result Flagging Color:	
rRNA Ratio [28s / 18s]:	0.0	Result Flagging Label:	RIN: 2.20

Assay Class: Eukaryote Total RNA Pico
Data Path: C:\...ents and Settings\Bioanalyzer\2013-07-02\2013-07-02_001.xad

Created: 7/2/2013 10:33:06 AM
Modified: 7/2/2013 10:47:26 AM

Electropherogram Summary Continued ...

WTA Glob EPD-5



Overall Results for sample 2 : WTA Glob EPD-5

RNA Area: 707.3 RNA Integrity Number (RIN): 2.2 (B.02.08)
RNA Concentration: 2,881 pg/μl Result Flagging Color:
rRNA Ratio [28s / 18s]: 0.8 Result Flagging Label: RIN: 2.20

Fragment table for sample 2 : WTA Glob EPD-5

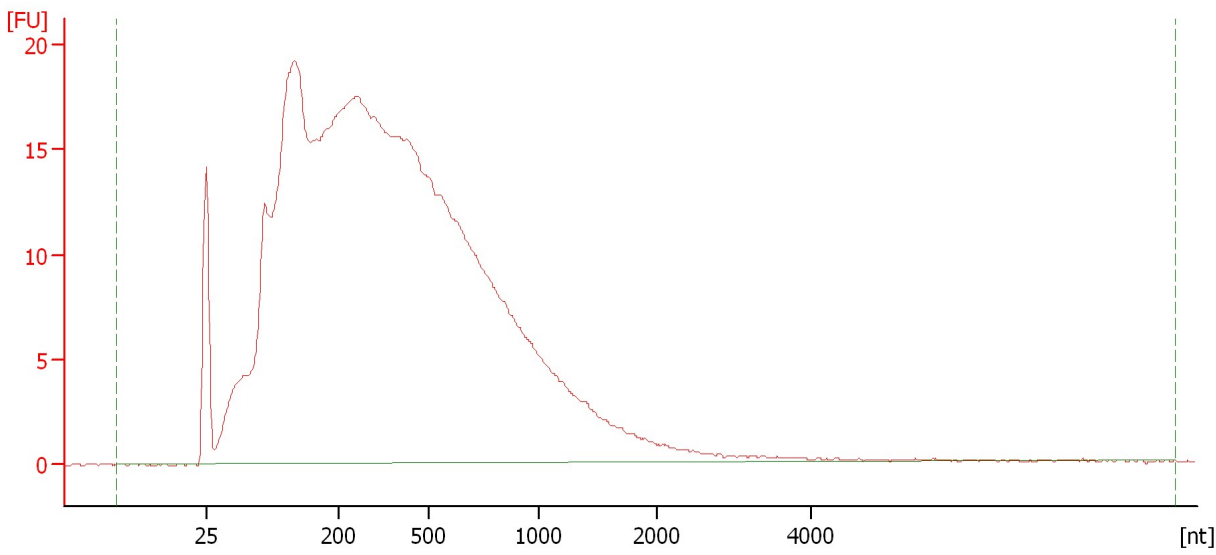
Name	Start Size [nt]	End Size [nt]	Area	% of total Area
18S	1,015	1,178	0.3	0.0
28S	2,346	2,834	0.2	0.0

Assay Class: Eukaryote Total RNA Pico
Data Path: C:\...ents and Settings\Bioanalyzer\2013-07-02\2013-07-02_001.xad

Created: 7/2/2013 10:33:06 AM
Modified: 7/2/2013 10:47:26 AM

Electropherogram Summary Continued ...

WTA Glob ENT-4



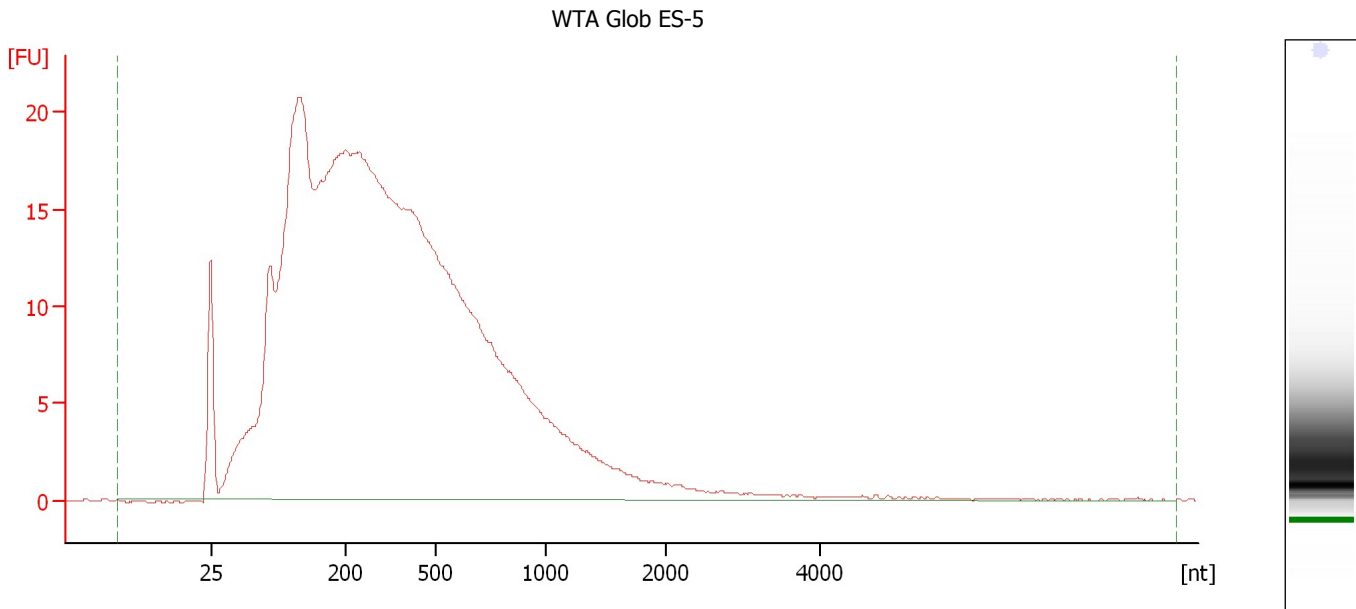
Overall Results for sample 3 : WTA Glob ENT-4

RNA Area:	615.5	RNA Integrity Number (RIN):	2 (B.02.08)
RNA Concentration:	2,508 pg/μl	Result Flagging Color:	
rRNA Ratio [28s / 18s]:	0.0	Result Flagging Label:	RIN:2

Assay Class: Eukaryote Total RNA Pico
Data Path: C:\...ents and Settings\Bioanalyzer\2013-07-02\2013-07-02_001.xad

Created: 7/2/2013 10:33:06 AM
Modified: 7/2/2013 10:47:26 AM

Electropherogram Summary Continued ...



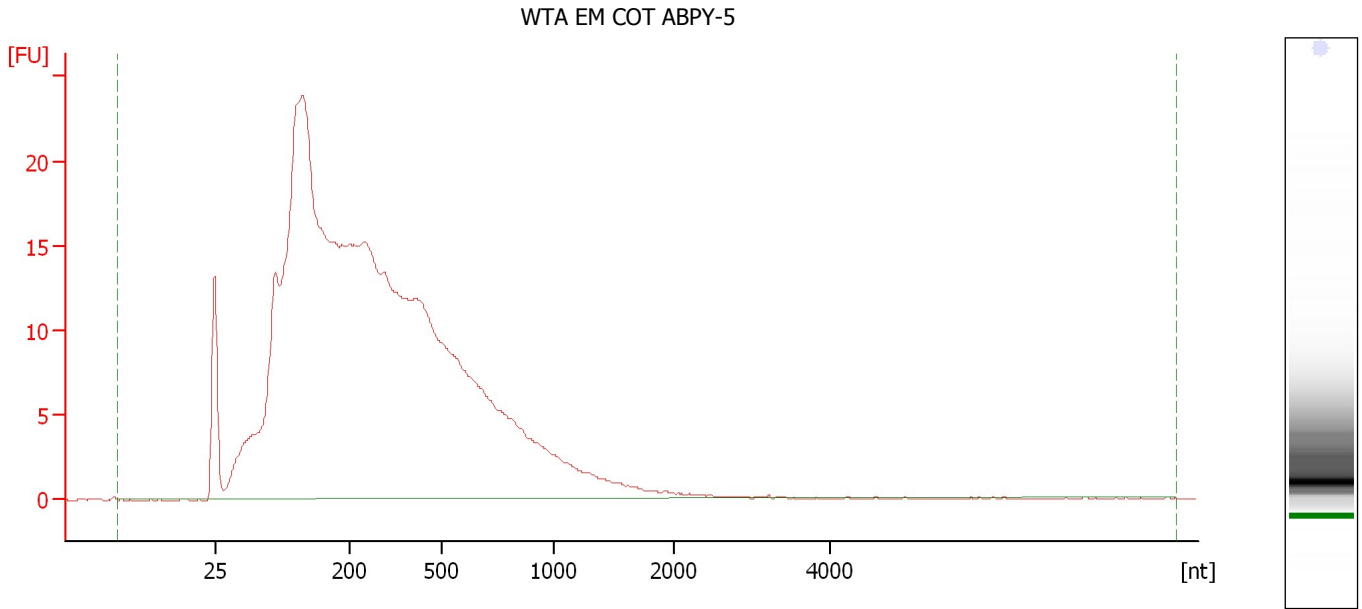
Overall Results for sample 4 : WTA Glob ES-5

RNA Area:	597.9	RNA Integrity Number (RIN):	2 (B.02.08)
RNA Concentration:	2,436 pg/μl	Result Flagging Color:	
rRNA Ratio [28s / 18s]:	0.0	Result Flagging Label:	RIN:2

Assay Class: Eukaryote Total RNA Pico
Data Path: C:\...ents and Settings\Bioanalyzer\2013-07-02\2013-07-02_001.xad

Created: 7/2/2013 10:33:06 AM
Modified: 7/2/2013 10:47:26 AM

Electropherogram Summary Continued ...



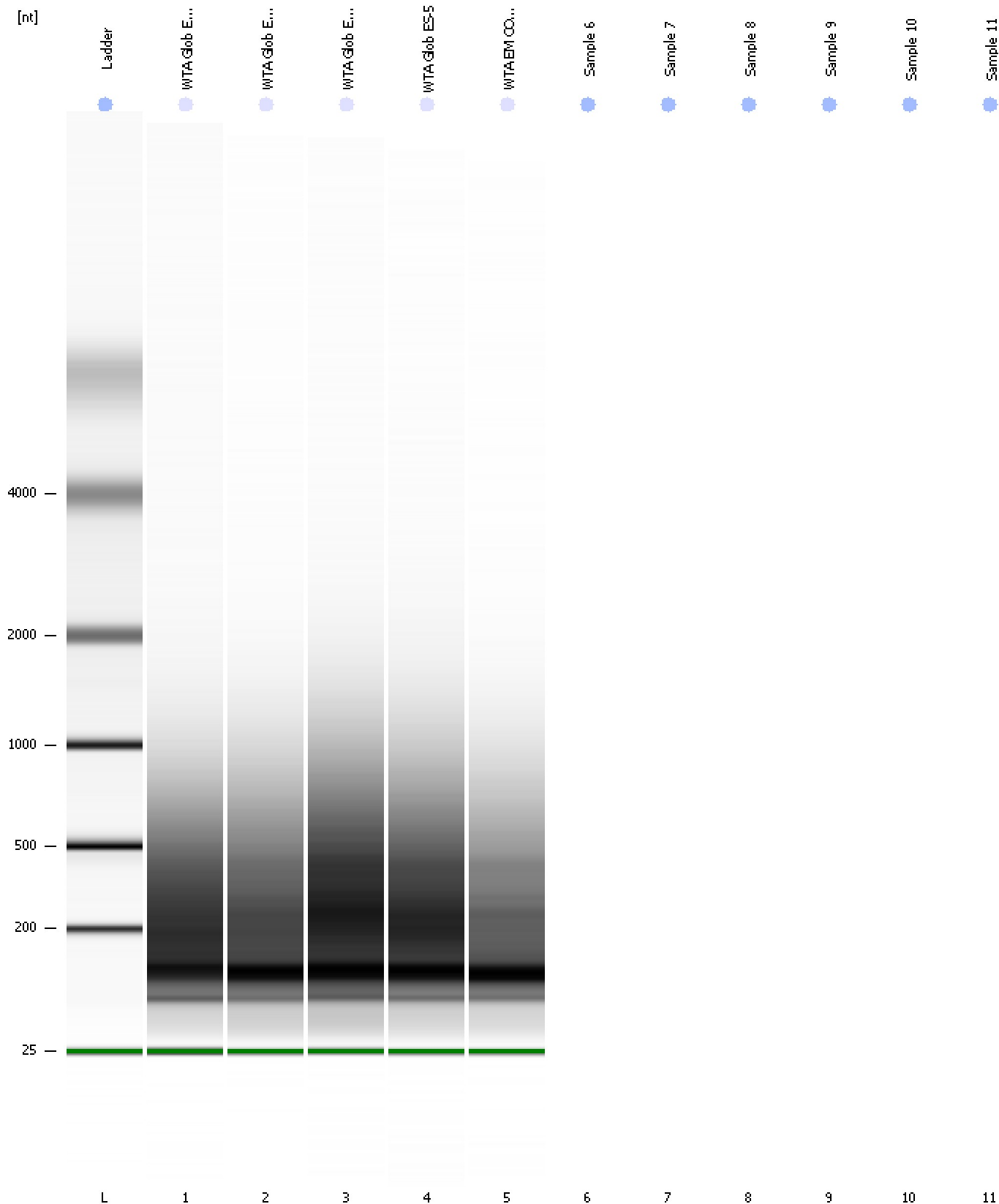
Overall Results for sample 5 : WTA EM COT ABPY-5

RNA Area:	511.8	RNA Integrity Number (RIN):	2.1 (B.02.08)
RNA Concentration:	2,085 µg/µl	Result Flagging Color:	
rRNA Ratio [28s / 18s]:	0.0	Result Flagging Label:	RIN: 2.10

Assay Class: Eukaryote Total RNA Pico
Data Path: C:\...ents and Settings\Bioanalyzer\2013-07-02\2013-07-02_001.xad

Created: 7/2/2013 10:33:06 AM
Modified: 7/2/2013 10:47:26 AM

Gel Image

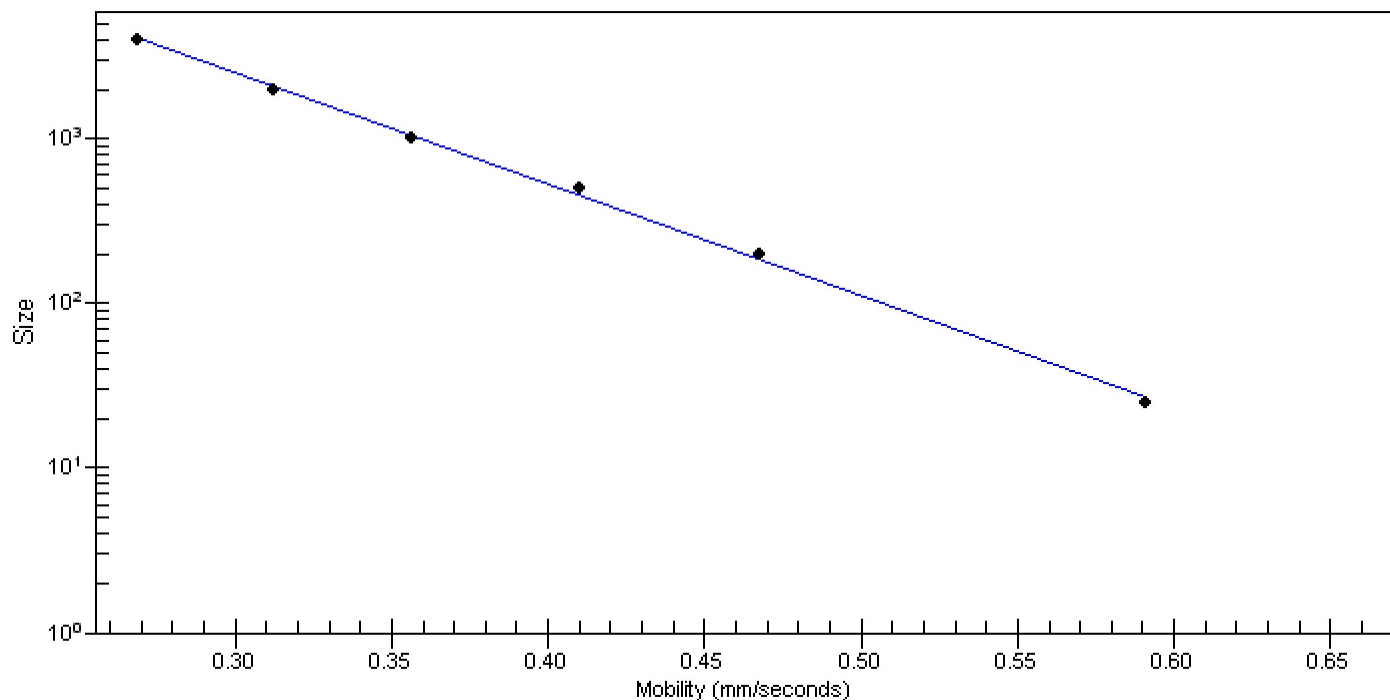


Assay Class: Eukaryote Total RNA Pico
Data Path: C:\...ents and Settings\Bioanalyzer\2013-07-02\2013-07-02_001.xad

Created: 7/2/2013 10:33:06 AM
Modified: 7/2/2013 10:47:26 AM

Curves

Standard Curve



Assay Class: Eukaryote Total RNA Pico
Data Path: C:\...ents and Settings\Bioanalyzer\2013-07-02\2013-07-02_001.xad

Created: 7/2/2013 10:33:06 AM
Modified: 7/2/2013 10:47:26 AM

Invalid Samples

Sample 6 has not been run, no results available.

Sample 7 has not been run, no results available.

Sample 8 has not been run, no results available.

Sample 9 has not been run, no results available.

Sample 10 has not been run, no results available.

Sample 11 has not been run, no results available.

Assay Class: Eukaryote Total RNA Pico
 Data Path: C:\...ents and Settings\Bioanalyzer\2013-07-02\2013-07-02_001.xad

Created: 7/2/2013 10:33:06 AM
 Modified: 7/2/2013 10:47:26 AM

Run Logbook

Description	Number	Source	Category	Sub Category	Time	Time Zone	User	Host
Run ended on port 1 (Number of wells acquired: 6)		Instrument	Run		7/2/2013 10:47:24 AM	(GMT --07:00) Pacific Standard Time	UC Davis	D8XSMGH1
Run started on port 1 (File: C:\Documents and Settings\Bioanalyzer\2013-07-02\2013-07-02_001.xad)		Instrument	Run		7/2/2013 10:33:12 AM	(GMT --07:00) Pacific Standard Time	UC Davis	D8XSMGH1
Product Number : G2938B		Instrument	Run		7/2/2013 10:33:12 AM	(GMT --07:00) Pacific Standard Time	UC Davis	D8XSMGH1
Name :		Instrument	Run		7/2/2013 10:33:12 AM	(GMT --07:00) Pacific Standard Time	UC Davis	D8XSMGH1
Vendor : Agilent Technologies		Instrument	Run		7/2/2013 10:33:12 AM	(GMT --07:00) Pacific Standard Time	UC Davis	D8XSMGH1
Serial# : DE13701086		Instrument	Run		7/2/2013 10:33:12 AM	(GMT --07:00) Pacific Standard Time	UC Davis	D8XSMGH1
Firmware : C.01.069		Instrument	Run		7/2/2013 10:33:12 AM	(GMT --07:00) Pacific Standard Time	UC Davis	D8XSMGH1
Cartridge : Electrode		Instrument	Run		7/2/2013 10:33:12 AM	(GMT --07:00) Pacific Standard Time	UC Davis	D8XSMGH1