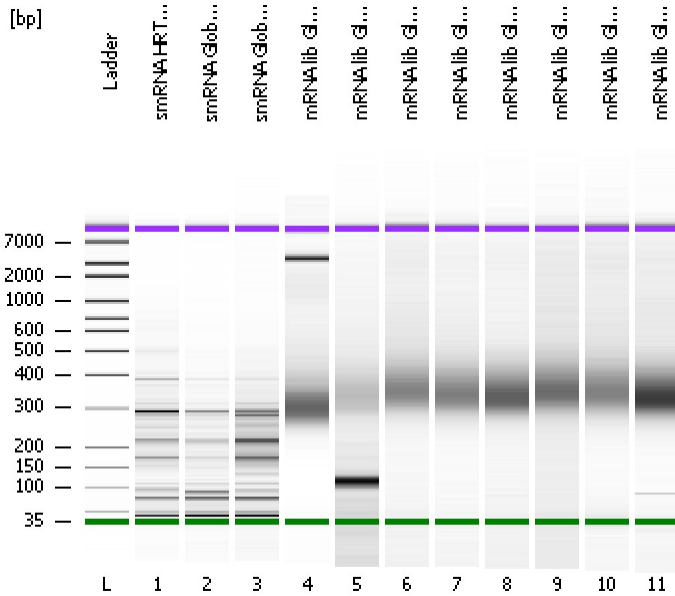


Assay Class: High Sensitivity DNA Assay
Data Path: C:\...ents and Settings\Bioanalyzer\2013-07-02\2013-07-02_003.xad

Created: 7/2/2013 11:41:16 AM
Modified: 7/2/2013 12:23:26 PM

Electrophoresis File Run Summary



Instrument Information:

Instrument Name: DE13701086 Firmware: C.01.069
Serial#: DE13701086 Type: G2938B

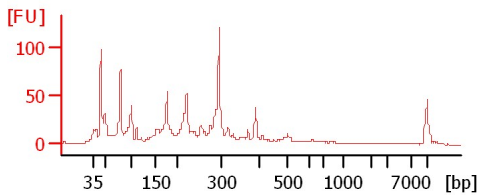
Assay Information:

Assay Origin Path: C:\Program Files\Agilent\2100 bioanalyzer\2100 expert\assays\dsDNA\High Sensitivity DNA.xsy
Assay Class: High Sensitivity DNA Assay
Version: 1.03
Assay Comments: Copyright © 2003-2010 Agilent Technologies

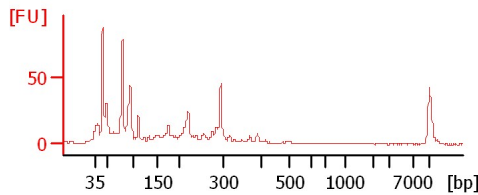
Chip Information:

Chip Lot #:
Reagent Kit Lot #:
Chip Comments:

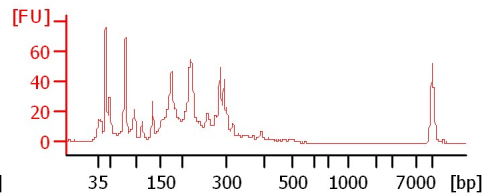
smRNA HRT HI-2



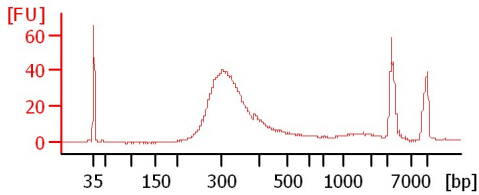
smRNA Glob EPD-1 (1/5)- Good RNA



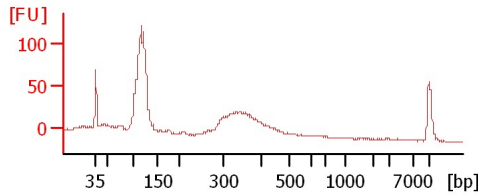
smRNA Glob EPD-2 (1/5)- Bad RNA



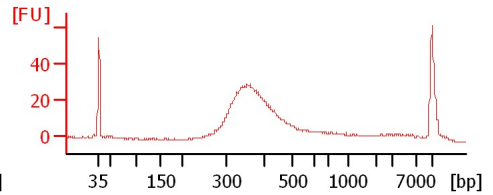
mRNA lib Glob EPD-4 (1/5)



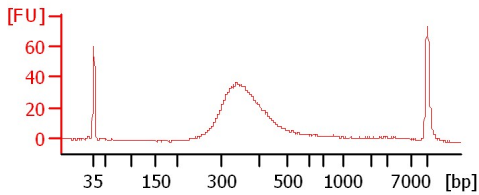
mRNA lib Glob OI-1 (1/5)



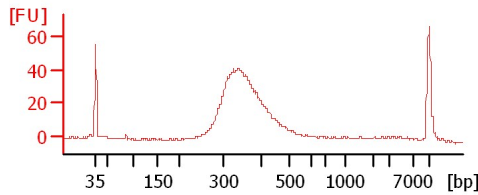
mRNA lib Glob OI-2 (1/5)



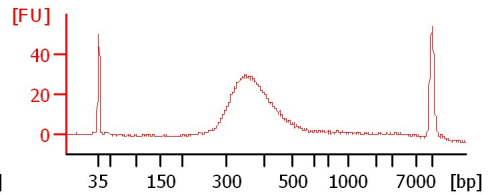
mRNA lib Glob OI-3 (1/5)



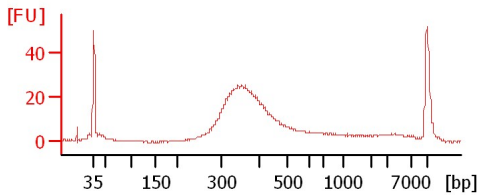
mRNA lib Glob II-1 (1/5)



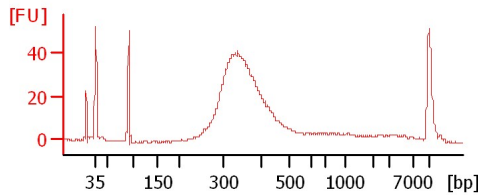
mRNA lib Glob II-2 (1/5)



mRNA lib Glob II-3 (1/5)



mRNA lib Glob ENT-1 (1/5)



Assay Class: High Sensitivity DNA Assay
 Data Path: C:\...ents and Settings\Bioanalyzer\2013-07-02\2013-07-02_003.xad

Created: 7/2/2013 11:41:16 AM
 Modified: 7/2/2013 12:23:26 PM

Electrophoresis File Run Summary (Chip Summary)

Sample Name	Sample Comment	Rest. Digest	Status	Observation	Result Label	Result Color
smRNA HRT HI-2		<input type="checkbox"/>	✓			
smRNA Glob EPD-1 (1/5)- Good RNA		<input type="checkbox"/>	✓			
smRNA Glob EPD-2 (1/5)- Bad		<input type="checkbox"/>	✓			
mRNA lib Glob EPD-4 (1/5)		<input type="checkbox"/>	✓			
mRNA lib Glob OI-1 (1/5)		<input type="checkbox"/>	✓			
mRNA lib Glob OI-2 (1/5)		<input type="checkbox"/>	✓			
mRNA lib Glob OI-3 (1/5)		<input type="checkbox"/>	✓			
mRNA lib Glob II-1 (1/5)		<input type="checkbox"/>	✓			
mRNA lib Glob II-2 (1/5)		<input type="checkbox"/>	✓			
mRNA lib Glob II-3 (1/5)		<input type="checkbox"/>	✓			
mRNA lib Glob ENT-1 (1/5)		<input type="checkbox"/>	✓			
Ladder		<input type="checkbox"/>	✓			

Chip Lot #

Reagent Kit Lot #

Chip Comments :

Assay Class: High Sensitivity DNA Assay
 Data Path: C:\...ents and Settings\Bioanalyzer\2013-07-02\2013-07-02_003.xad

Created: 7/2/2013 11:41:16 AM
 Modified: 7/2/2013 12:23:26 PM

Electrophoresis Assay Details

General Analysis Settings

Number of Available Sample and Ladder Wells (Max.) : 12
 Minimum Visible Range [s] : 32
 Maximum Visible Range [s] : 138
 Start Analysis Time Range [s] : 33
 End Analysis Time Range [s] : 137.5
 Ladder Concentration [pg/μl] : 1950
 Uses Standard Area for Ladder Fragments
 Lower Marker Concentration [pg/μl] : 125
 Upper Marker Concentration [pg/μl] : 75
 Used Upper Marker for Quantitation
 Standard Curve Fit is Point to Point
 Show Data Aligned to Lower and Upper Marker

Integrator Settings

Integration Start Time [s] : 33.05
 Integration End Time [s] : 137
 Slope Threshold : 0.8
 Height Threshold [FU] : 5
 Area Threshold : 0.1
 Width Threshold [s] : 0.6
 Baseline Plateau [s] : 0.5

Filter Settings

Filter Width [s] : 0.5
 Polynomial Order : 4

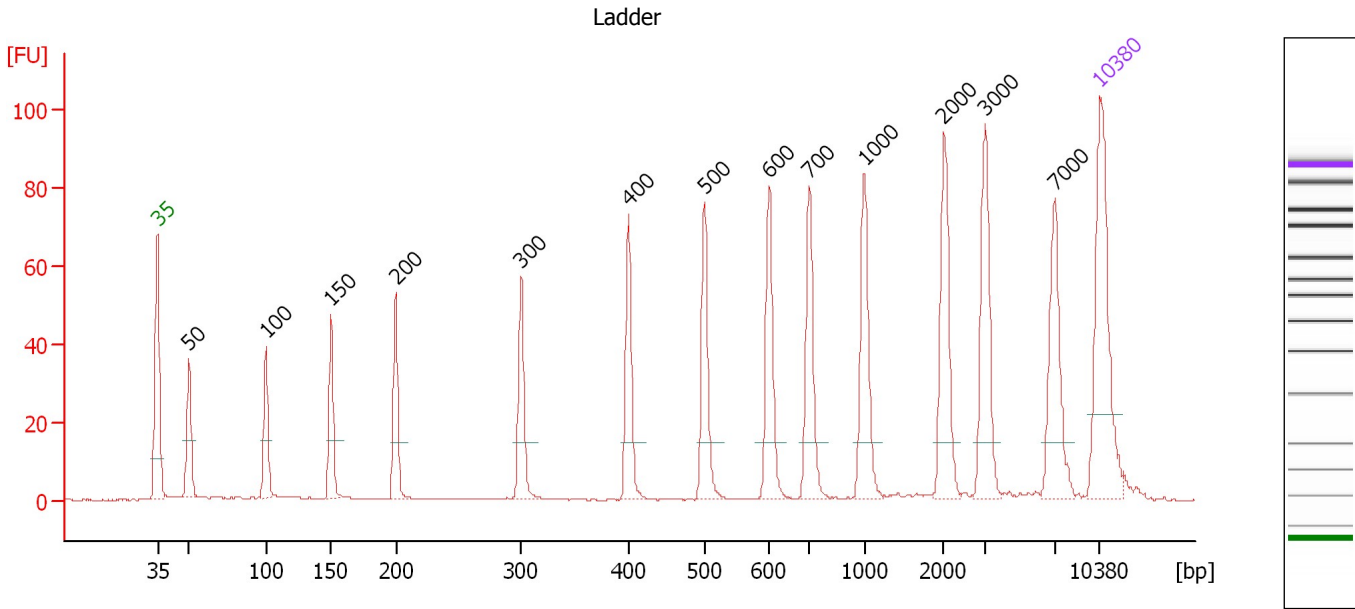
Ladder

Ladder Peak	Size	Area
1	35	160
2	50	210
3	100	208
4	150	221
5	200	242
6	300	270
7	400	305
8	500	306
9	600	336
10	700	321
11	1000	366
12	2000	413
13	3000	411
14	7000	400
15	10380	214

Assay Class: High Sensitivity DNA Assay
 Data Path: C:\...ents and Settings\Bioanalyzer\2013-07-02\2013-07-02_003.xad

Created: 7/2/2013 11:41:16 AM
 Modified: 7/2/2013 12:23:26 PM

Electropherogram Summary



Overall Results for Ladder

Noise: 0.2

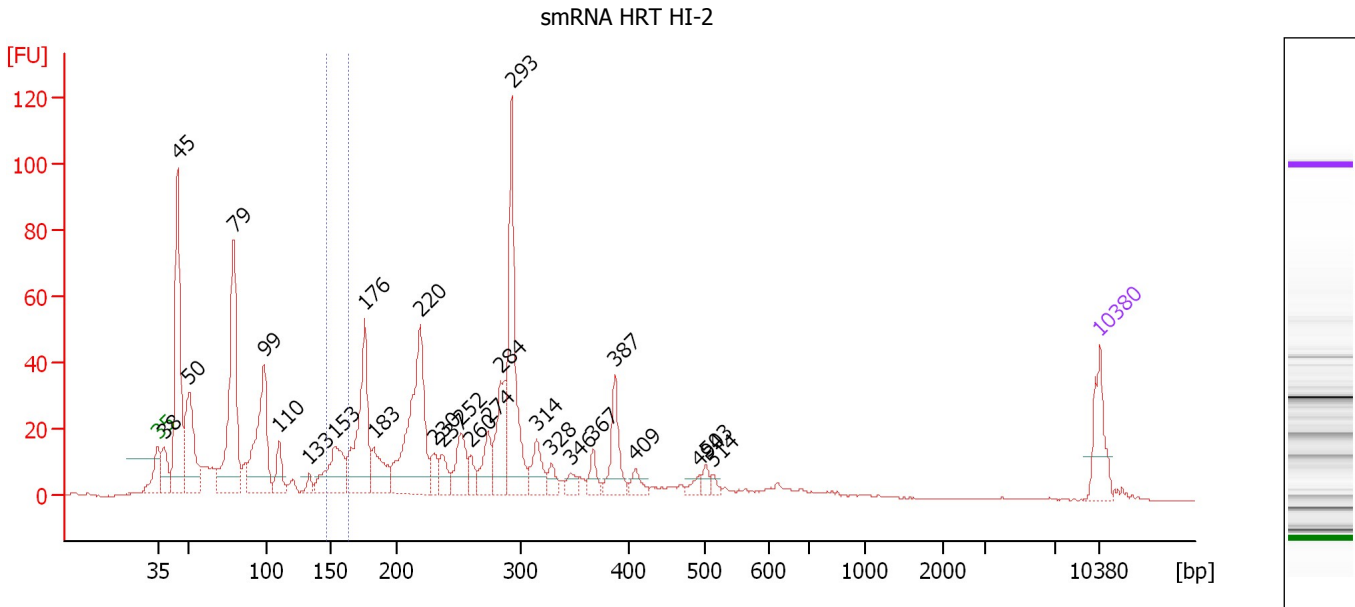
Peak table for Ladder

Peak	Size [bp]	Conc. [pg/μl]	Molarity [pmol/l]	Observations
1	35	125.00	5,411.3	Lower Marker
2	50	150.00	4,545.5	Ladder Peak
3	100	150.00	2,272.7	Ladder Peak
4	150	150.00	1,515.2	Ladder Peak
5	200	150.00	1,136.4	Ladder Peak
6	300	150.00	757.6	Ladder Peak
7	400	150.00	568.2	Ladder Peak
8	500	150.00	454.5	Ladder Peak
9	600	150.00	378.8	Ladder Peak
10	700	150.00	324.7	Ladder Peak
11	1,000	150.00	227.3	Ladder Peak
12	2,000	150.00	113.6	Ladder Peak
13	3,000	150.00	75.8	Ladder Peak
14	7,000	150.00	32.5	Ladder Peak
15	10,380	75.00	10.9	Upper Marker

Assay Class: High Sensitivity DNA Assay
 Data Path: C:\...ents and Settings\Bioanalyzer\2013-07-02\2013-07-02_003.xad

Created: 7/2/2013 11:41:16 AM
 Modified: 7/2/2013 12:23:26 PM

Electropherogram Summary Continued ...



Overall Results for sample 1 : smRNA HRT HI-2

Number of peaks found: 27 Corr. Area 1: 39.3
 Noise: 0.2

Peak table for sample 1 : smRNA HRT HI-2

Peak	Size [bp]	Conc. [pg/μl]	Molarity [pmol/l]	Observations
1	35	125.00	5,411.3	Lower Marker
2	38	88.62	3,522.0	
3	45	513.75	17,432.0	
4	50	246.22	7,451.5	
5	79	474.52	9,093.8	
6	99	320.73	4,932.5	
7	110	66.43	914.3	
8	133	21.59	245.4	
9	153	164.86	1,633.5	
10	176	306.99	2,640.4	
11	183	101.76	842.6	
12	220	403.56	2,784.0	
13	230	44.71	293.9	
14	237	47.63	304.4	
15	252	96.98	583.9	
16	260	32.49	189.6	
17	274	75.82	419.6	
18	284	141.33	754.9	
19	293	354.60	1,836.0	
20	314	69.66	335.6	
21	328	28.27	130.5	
22	346	24.97	109.2	
23	367	33.98	140.4	
24	387	98.36	385.0	
25	409	26.74	99.1	
26	494	17.12	52.5	

Assay Class: High Sensitivity DNA Assay
 Data Path: C:\...ents and Settings\Bioanalyzer\2013-07-02\2013-07-02_003.xad

Created: 7/2/2013 11:41:16 AM
 Modified: 7/2/2013 12:23:26 PM

Electropherogram Summary Continued ...

... Peak table for sample 1 : smRNA HRT HI-2

Peak	Size [bp]	Conc. [pg/μl]	Molarity [pmol/l]	Observations
27	503	19.29	58.1	
28	514	12.21	36.0	
29	▶ 10,380	75.00	10.9	Upper Marker

Region table for sample 1 : smRNA HRT HI-2

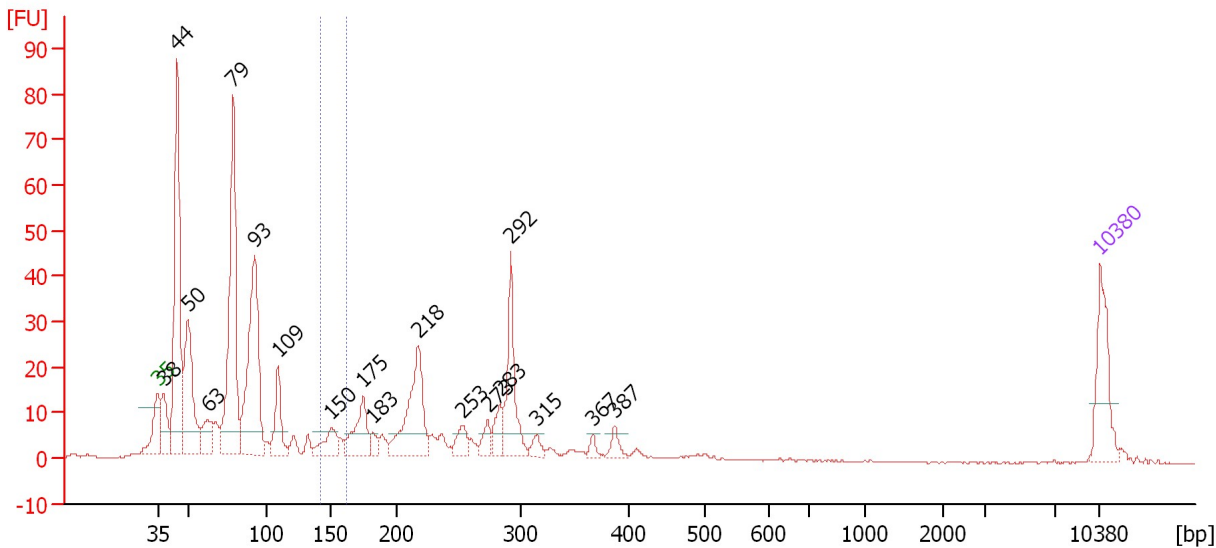
From [bp]	To [bp]	Average Size [bp]	Molarity [pmol/l]	Conc. [pg/μl]	Corr. Area	% of Total	Size distribution in CV [%]	Color
146	163	155	1,506.7	153.86	39.3	3	3.1	■

Assay Class: High Sensitivity DNA Assay
 Data Path: C:\...ents and Settings\Bioanalyzer\2013-07-02\2013-07-02_003.xad

Created: 7/2/2013 11:41:16 AM
 Modified: 7/2/2013 12:23:26 PM

Electropherogram Summary Continued ...

smRNA Glob EPD-1 (1/5)- Good RNA



Overall Results for sample 2 : smRNA Glob EPD-1 (1/5)- Good RNA

Number of peaks found: 18 Corr. Area 1: 19.0
 Noise: 0.1

Peak table for sample 2 : smRNA Glob EPD-1 (1/5)- Good RNA

Peak	Size [bp]	Conc. [pg/μl]	Molarity [pmol/l]	Observations
1	35	125.00	5,411.3	Lower Marker
2	38	82.07	3,284.1	
3	44	437.80	14,920.2	
4	50	214.61	6,553.3	
5	63	56.88	1,377.1	
6	79	420.01	8,080.2	
7	93	353.25	5,778.6	
8	109	82.81	1,149.7	
9	150	52.08	525.8	
10	175	87.17	755.1	
11	183	17.70	146.7	
12	218	178.58	1,242.2	
13	253	33.16	198.2	
14	273	26.61	147.5	
15	283	37.07	198.5	
16	292	130.43	676.8	
17	315	17.82	85.8	
18	367	10.38	42.9	
19	387	18.33	71.7	
20	10,380	75.00	10.9	Upper Marker

Region table for sample 2 : smRNA Glob EPD-1 (1/5)- Good RNA

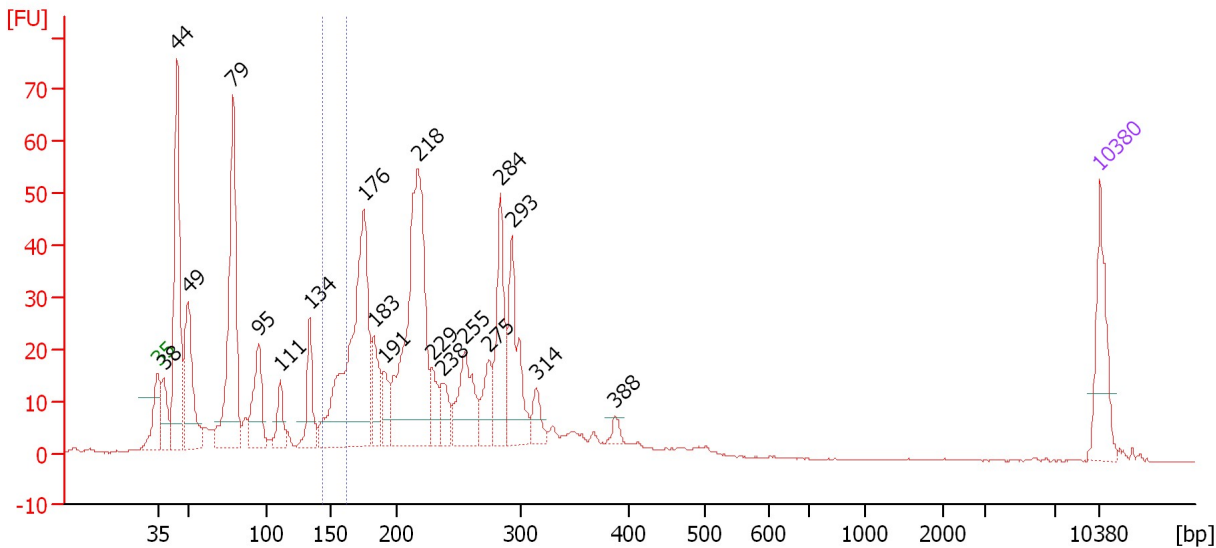
From [bp]	To [bp]	Average Size [bp]	Molarity [pmol/l]	Conc. [pg/μl]	Corr. Area	% of Total	Size distribution in CV [%]	Color
142	162	152	715.7	71.64	19.0	3	3.7	Blue

Assay Class: High Sensitivity DNA Assay
 Data Path: C:\...ents and Settings\Bioanalyzer\2013-07-02\2013-07-02_003.xad

Created: 7/2/2013 11:41:16 AM
 Modified: 7/2/2013 12:23:26 PM

Electropherogram Summary Continued ...

smRNA Glob EPD-2 (1/5)- Bad RNA



Overall Results for sample 3 : smRNA Glob EPD-2 (1/5)- Bad RNA

Number of peaks found: 19 Corr. Area 1: 39.6
 Noise: 0.2

Peak table for sample 3 : smRNA Glob EPD-2 (1/5)- Bad RNA

Peak	Size [bp]	Conc. [pg/μl]	Molarity [pmol/l]	Observations
1	35	125.00	5,411.3	Lower Marker
2	38	71.08	2,842.0	
3	44	344.98	11,809.5	
4	49	181.41	5,556.3	
5	79	371.85	7,146.4	
6	95	121.69	1,937.4	
7	111	50.92	695.4	
8	134	83.16	942.3	
9	176	460.09	3,971.9	
10	183	77.33	640.4	
11	191	46.35	367.1	
12	218	464.53	3,230.3	
13	229	49.94	330.5	
14	238	43.65	277.8	
15	255	117.81	699.1	
16	275	56.89	314.0	
17	284	149.25	797.3	
18	293	147.06	761.1	
19	314	33.74	162.8	
20	388	12.39	48.4	
21	10,380	75.00	10.9	Upper Marker

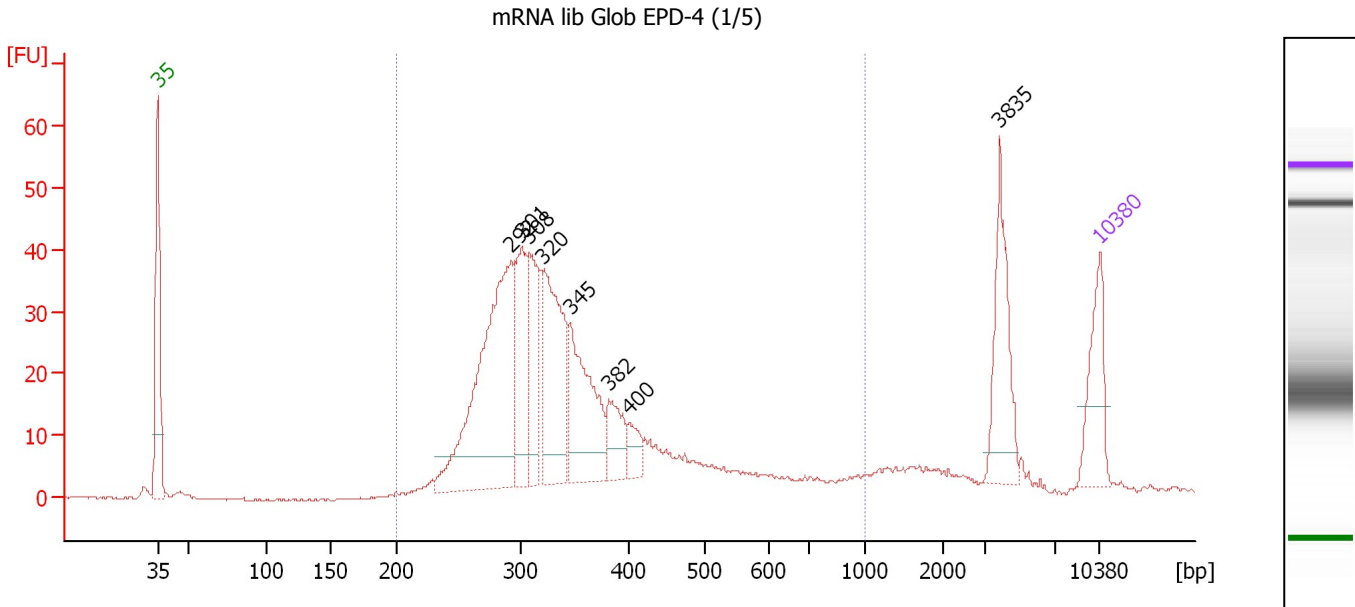
Region table for sample 3 : smRNA Glob EPD-2 (1/5)- Bad RNA

From [bp]	To [bp]	Average Size [bp]	Molarity [pmol/l]	Conc. [pg/μl]	Corr. Area	% of Total	Size distribution in CV [%]	Color
144	161	154	1,344.3	136.43	39.6	4	3.1	Blue

Assay Class: High Sensitivity DNA Assay
 Data Path: C:\...ents and Settings\Bioanalyzer\2013-07-02\2013-07-02_003.xad

Created: 7/2/2013 11:41:16 AM
 Modified: 7/2/2013 12:23:26 PM

Electropherogram Summary Continued ...



Overall Results for sample 4 : mRNA lib Glob EPD-4 (1/5)

Number of peaks found: 8 Corr. Area 1: 621.3
 Noise: 0.1

Peak table for sample 4 : mRNA lib Glob EPD-4 (1/5)

Peak	Size [bp]	Conc. [pg/μl]	Molarity [pmol/l]	Observations
1	35	125.00	5,411.3	Lower Marker
2	292	499.46	2,589.8	
3	301	190.46	958.1	
4	308	127.46	627.3	
5	320	250.90	1,187.1	
6	345	201.75	884.8	
7	382	64.17	254.5	
8	400	34.23	129.6	
9	3,835	115.22	45.5	
10	10,380	75.00	10.9	Upper Marker

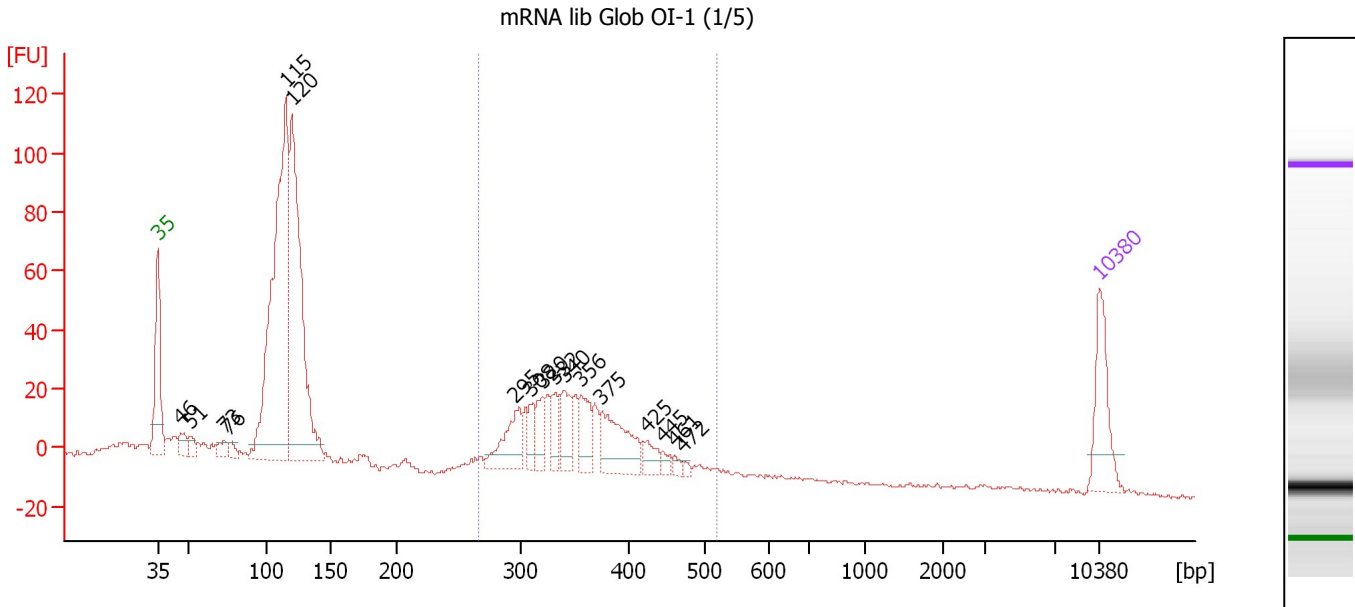
Region table for sample 4 : mRNA lib Glob EPD-4 (1/5)

From [bp]	To [bp]	Average Size [bp]	Molarity [pmol/l]	Conc. [pg/μl]	Corr. Area	% of Total	Size distribution in CV [%]	Color
200	1,000	355	8,052.9	1,732.08	621.3	85	31.4	Blue

Assay Class: High Sensitivity DNA Assay
 Data Path: C:\...ents and Settings\Bioanalyzer\2013-07-02\2013-07-02_003.xad

Created: 7/2/2013 11:41:16 AM
 Modified: 7/2/2013 12:23:26 PM

Electropherogram Summary Continued ...



Overall Results for sample 5 : mRNA lib Glob OI-1 (1/5)

Number of peaks found: 17 Corr. Area 1: 328.0
 Noise: 0.6

Peak table for sample 5 : mRNA lib Glob OI-1 (1/5)

Peak	Size [bp]	Conc. [pg/μl]	Molarity [pmol/l]	Observations
1	35	125.00	5,411.3	Lower Marker
2	46	30.47	1,006.9	
3	51	18.62	558.5	
4	73	23.25	481.2	
5	76	15.42	307.3	
6	115	722.86	9,490.4	
7	120	526.29	6,658.3	
8	295	85.09	436.9	
9	308	33.87	166.4	
10	320	38.91	184.3	
11	332	38.51	175.9	
12	340	55.54	247.2	
13	356	57.67	245.3	
14	375	105.65	427.0	
15	425	27.24	97.1	
16	445	12.16	41.4	
17	461	8.63	28.3	
18	472	6.02	19.3	
19	10,380	75.00	10.9	Upper Marker

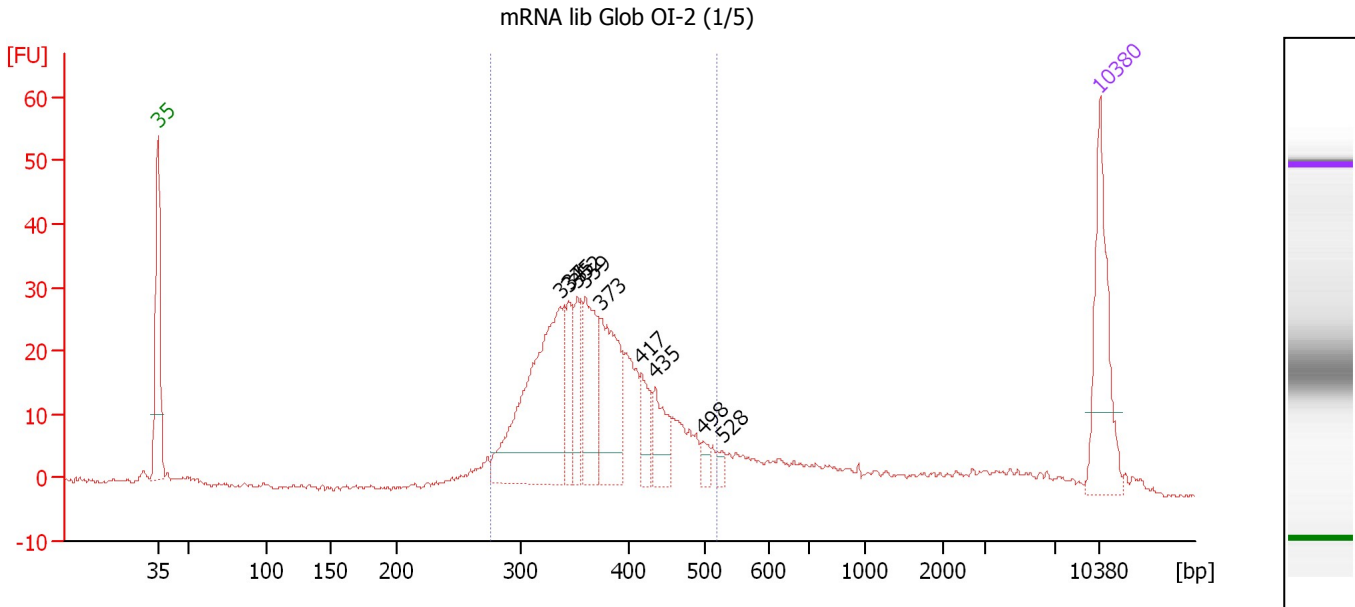
Region table for sample 5 : mRNA lib Glob OI-1 (1/5)

From [bp]	To [bp]	Average Size [bp]	Molarity [pmol/l]	Conc. [pg/μl]	Corr. Area	% of Total	Size distribution in CV [%]	Color
267	520	355	2,405.7	552.11	328.0	35	13.7	Blue

Assay Class: High Sensitivity DNA Assay
 Data Path: C:\...ents and Settings\Bioanalyzer\2013-07-02\2013-07-02_003.xad

Created: 7/2/2013 11:41:16 AM
 Modified: 7/2/2013 12:23:26 PM

Electropherogram Summary Continued ...



Overall Results for sample 6 : mRNA lib Glob OI-2 (1/5)

Number of peaks found: 9 Corr. Area 1: 400.3
 Noise: 0.4

Peak table for sample 6 : mRNA lib Glob OI-2 (1/5)

Peak	Size [bp]	Conc. [pg/μl]	Molarity [pmol/l]	Observations
1	35	125.00	5,411.3	Lower Marker
2	337	233.63	1,050.7	
3	345	44.80	197.0	
4	352	44.77	192.6	
5	359	85.36	360.0	
6	373	103.68	420.8	
7	417	29.07	105.6	
8	435	39.79	138.5	
9	498	9.56	29.1	
10	528	6.84	19.6	
11	10,380	75.00	10.9	Upper Marker

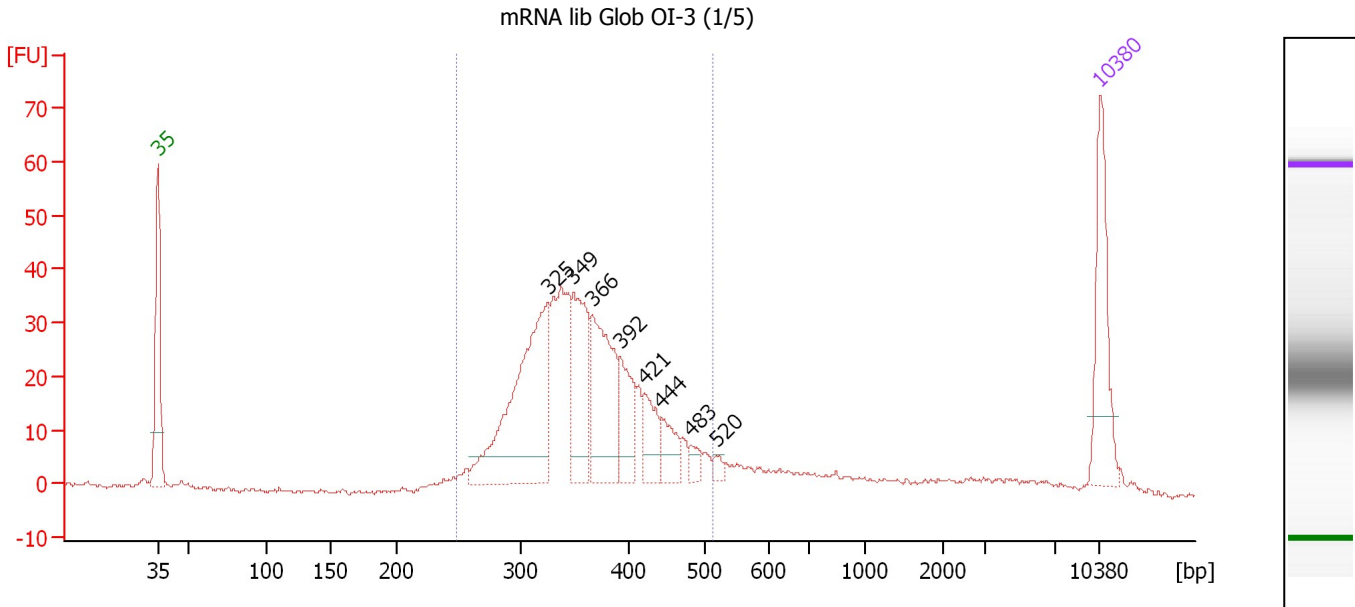
Region table for sample 6 : mRNA lib Glob OI-2 (1/5)

From [bp]	To [bp]	Average Size [bp]	Molarity [pmol/l]	Conc. [pg/μl]	Corr. Area	% of Total	Size distribution in CV [%]	Color
276	518	373	3,028.4	727.27	400.3	77	14.5	Blue

Assay Class: High Sensitivity DNA Assay
 Data Path: C:\...ents and Settings\Bioanalyzer\2013-07-02\2013-07-02_003.xad

Created: 7/2/2013 11:41:16 AM
 Modified: 7/2/2013 12:23:26 PM

Electropherogram Summary Continued ...



Overall Results for sample 7 : mRNA lib Glob OI-3 (1/5)

Number of peaks found: 8 Corr. Area 1: 513.7
 Noise: 0.5

Peak table for sample 7 : mRNA lib Glob OI-3 (1/5)

Peak	Size [bp]	Conc. [pg/μl]	Molarity [pmol/l]	Observations
1	35	125.00	5,411.3	Lower Marker
2	325	252.77	1,177.4	
3	349	112.80	489.9	
4	366	133.68	553.4	
5	392	56.23	217.3	
6	421	39.41	142.0	
7	444	32.14	109.7	
8	483	11.56	36.3	
9	520	7.26	21.2	
10	10,380	75.00	10.9	Upper Marker

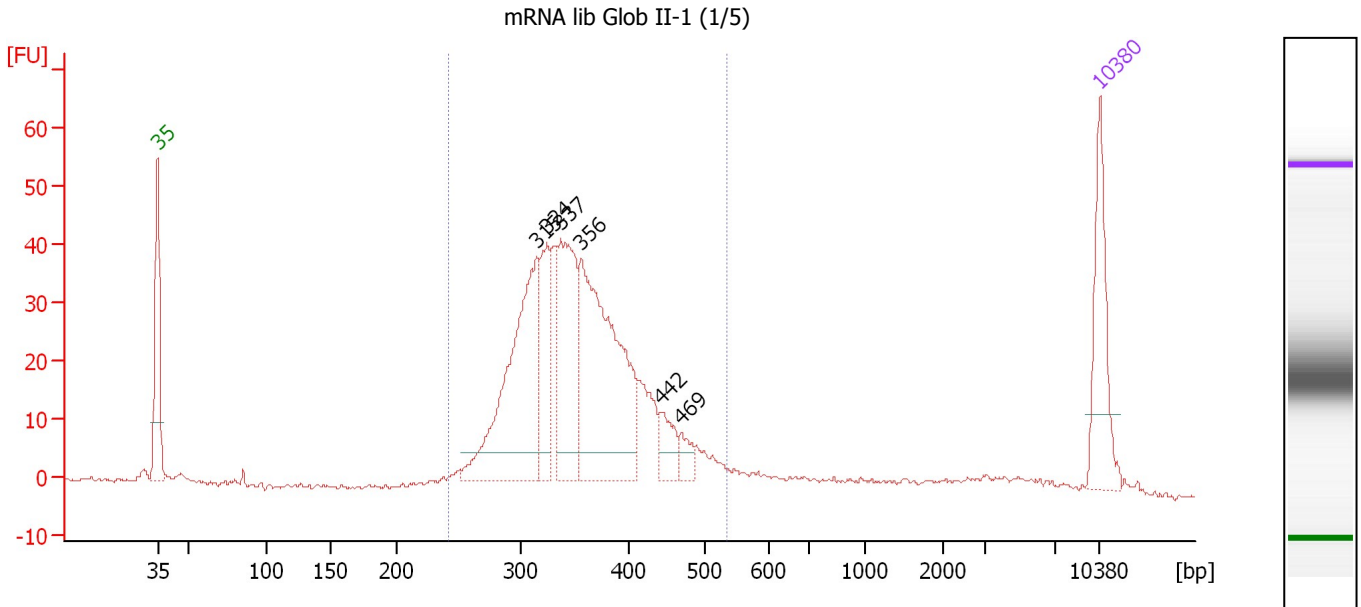
Region table for sample 7 : mRNA lib Glob OI-3 (1/5)

From [bp]	To [bp]	Average Size [bp]	Molarity [pmol/l]	Conc. [pg/μl]	Corr. Area	% of Total	Size distribution in CV [%]	Color
249	514	361	3,897.6	902.64	513.7	83	15.2	Blue

Assay Class: High Sensitivity DNA Assay
 Data Path: C:\...ents and Settings\Bioanalyzer\2013-07-02\2013-07-02_003.xad

Created: 7/2/2013 11:41:16 AM
 Modified: 7/2/2013 12:23:26 PM

Electropherogram Summary Continued ...



Overall Results for sample 8 : mRNA lib Glob II-1 (1/5)

Number of peaks found: 6 Corr. Area 1: 575.7
 Noise: 0.4

Peak table for sample 8 : mRNA lib Glob II-1 (1/5)

Peak	Size [bp]	Conc. [pg/μl]	Molarity [pmol/l]	Observations
1	35	125.00	5,411.3	Lower Marker
2	315	282.30	1,358.9	
3	324	87.73	410.0	
4	337	166.78	750.8	
5	356	308.69	1,313.7	
6	442	32.65	111.9	
7	469	18.55	59.9	
8	10,380	75.00	10.9	Upper Marker

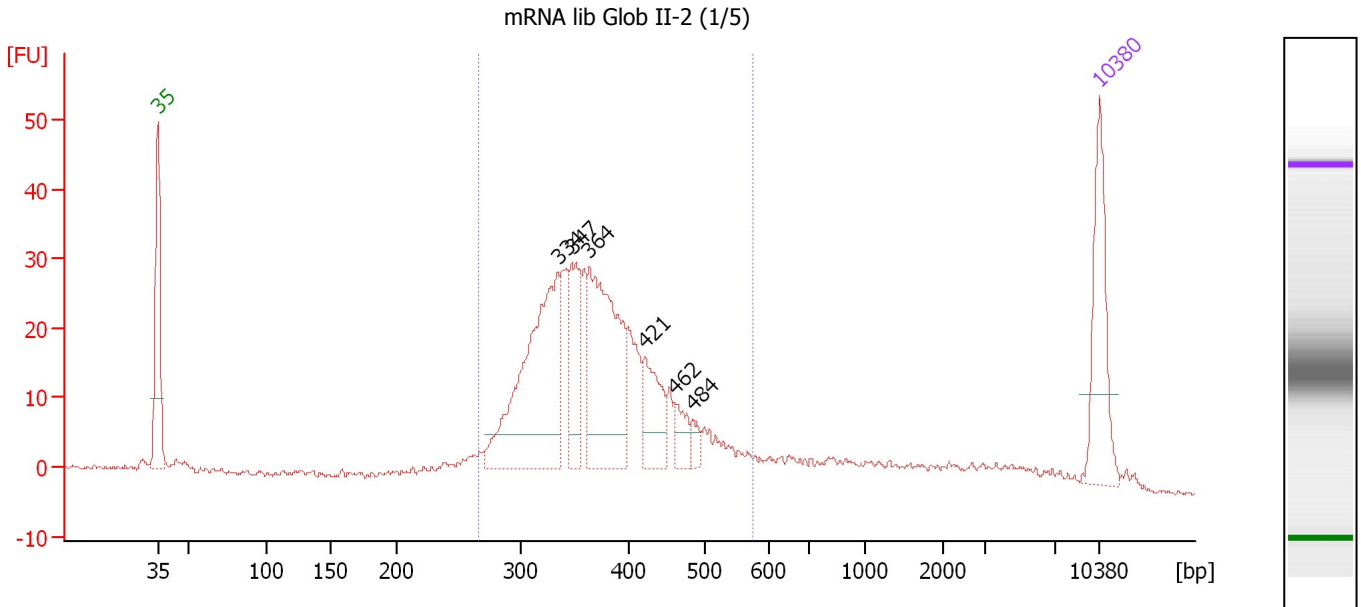
Region table for sample 8 : mRNA lib Glob II-1 (1/5)

From [bp]	To [bp]	Average Size [bp]	Molarity [pmol/l]	Conc. [pg/μl]	Corr. Area	% of Total	Size distribution in CV [%]	Color
243	535	357	4,756.2	1,088.52	575.7	88	15.7	Blue

Assay Class: High Sensitivity DNA Assay
 Data Path: C:\...ents and Settings\Bioanalyzer\2013-07-02\2013-07-02_003.xad

Created: 7/2/2013 11:41:16 AM
 Modified: 7/2/2013 12:23:26 PM

Electropherogram Summary Continued ...



Overall Results for sample 9 : mRNA lib Glob II-2 (1/5)

Number of peaks found: 6 Corr. Area 1: 447.5
 Noise: 0.5

Peak table for sample 9 : mRNA lib Glob II-2 (1/5)

Peak	Size [bp]	Conc. [pg/μl]	Molarity [pmol/l]	Observations
1	35	125.00	5,411.3	Lower Marker
2	334	260.41	1,180.5	
3	347	80.83	352.7	
4	364	207.37	863.8	
5	421	60.01	215.8	
6	462	24.53	80.5	
7	484	12.13	38.0	
8	10,380	75.00	10.9	Upper Marker

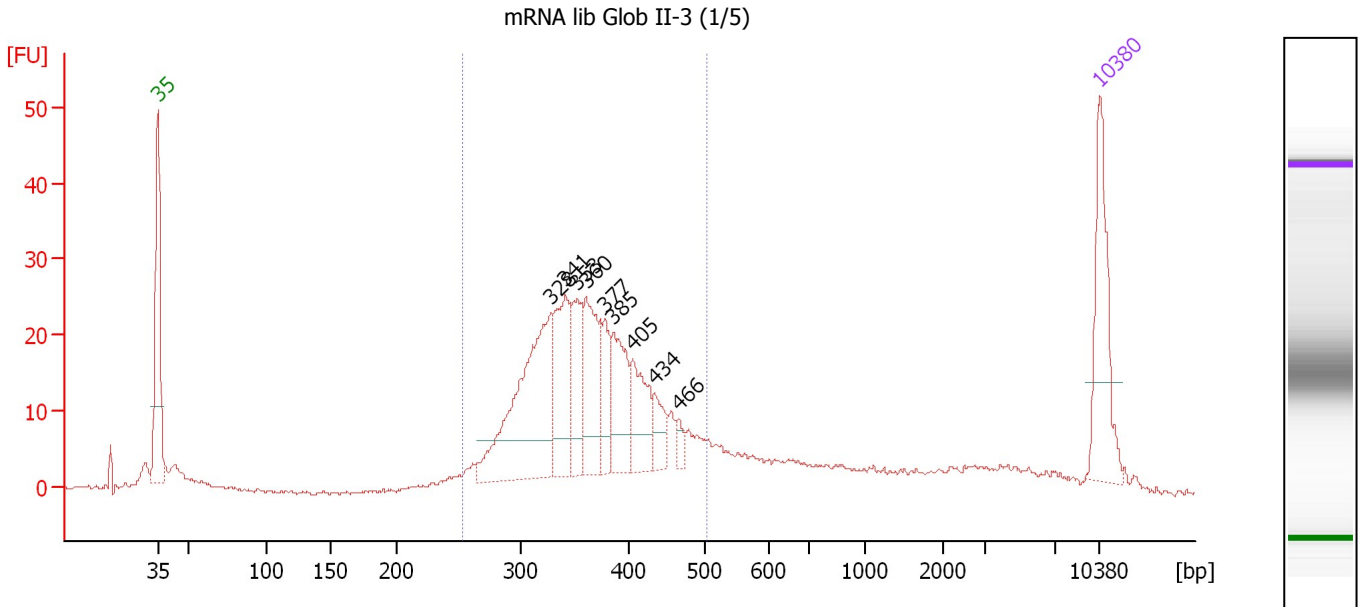
Region table for sample 9 : mRNA lib Glob II-2 (1/5)

From [bp]	To [bp]	Average Size [bp]	Molarity [pmol/l]	Conc. [pg/μl]	Corr. Area	% of Total	Size distribution in CV [%]	Color
266	574	378	3,907.0	940.91	447.5	79	17.0	Blue

Assay Class: High Sensitivity DNA Assay
 Data Path: C:\...ents and Settings\Bioanalyzer\2013-07-02\2013-07-02_003.xad

Created: 7/2/2013 11:41:16 AM
 Modified: 7/2/2013 12:23:26 PM

Electropherogram Summary Continued ...



Overall Results for sample 10 : mRNA lib Glob II-3 (1/5)

Number of peaks found: 9 Corr. Area 1: 366.2
 Noise: 0.3

Peak table for sample 10 : mRNA lib Glob II-3 (1/5)

Peak	Size [bp]	Conc. [pg/μl]	Molarity [pmol/l]	Observations
1	35	125.00	5,411.3	Lower Marker
2	328	219.58	1,013.3	
3	341	93.82	416.4	
4	353	58.24	250.2	
5	360	92.50	388.8	
6	377	38.53	154.8	
7	385	67.39	264.9	
8	405	59.51	222.4	
9	434	23.95	83.6	
10	466	10.43	33.9	
11	10,380	75.00	10.9	Upper Marker

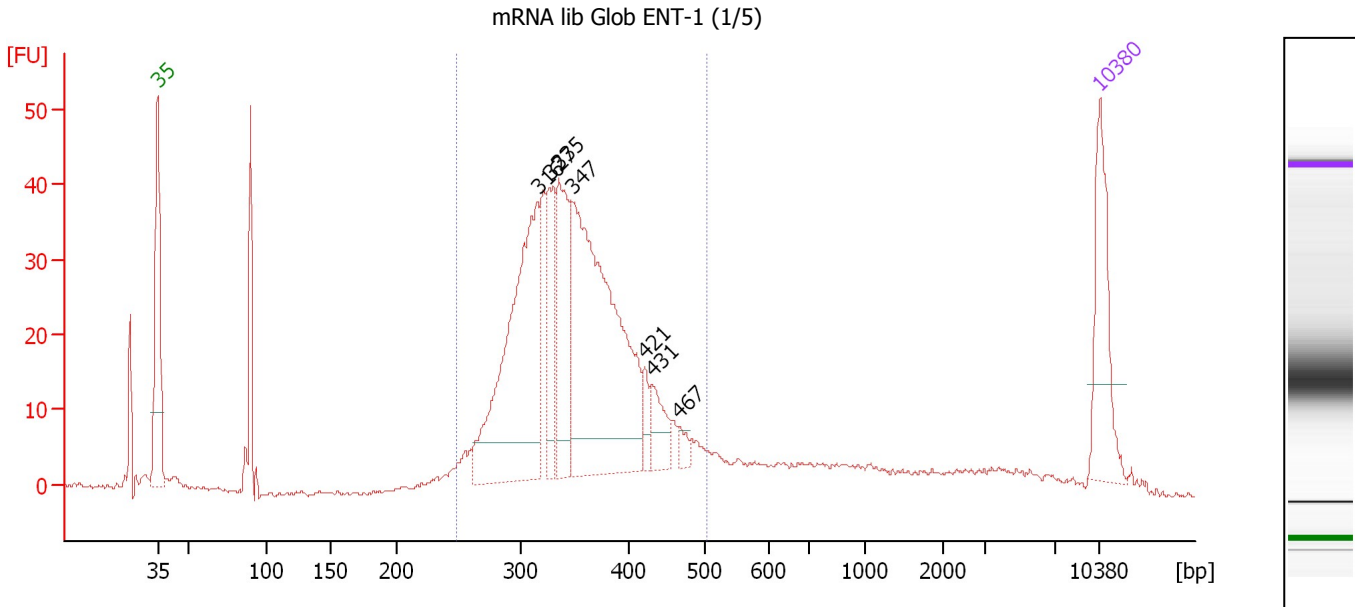
Region table for sample 10 : mRNA lib Glob II-3 (1/5)

From [bp]	To [bp]	Average Size [bp]	Molarity [pmol/l]	Conc. [pg/μl]	Corr. Area	% of Total	Size distribution in CV [%]	Color
254	504	365	3,605.8	844.77	366.2	71	15.1	Blue

Assay Class: High Sensitivity DNA Assay
 Data Path: C:\...ents and Settings\Bioanalyzer\2013-07-02\2013-07-02_003.xad

Created: 7/2/2013 11:41:16 AM
 Modified: 7/2/2013 12:23:26 PM

Electropherogram Summary Continued ...



Overall Results for sample 11 : mRNA lib Glob ENT-1 (1/5)

Number of peaks found: 7 Corr. Area 1: 533.7
 Noise: 0.3

Peak table for sample 11 : mRNA lib Glob ENT-1 (1/5)

Peak	Size [bp]	Conc. [pg/μl]	Molarity [pmol/l]	Observations
1	35	125.00	5,411.3	Lower Marker
2	316	326.16	1,565.7	
3	327	76.17	352.9	
4	335	125.35	567.3	
5	347	400.53	1,747.2	
6	421	20.96	75.4	
7	431	34.07	119.6	
8	467	10.34	33.5	
9	10,380	75.00	10.9	Upper Marker

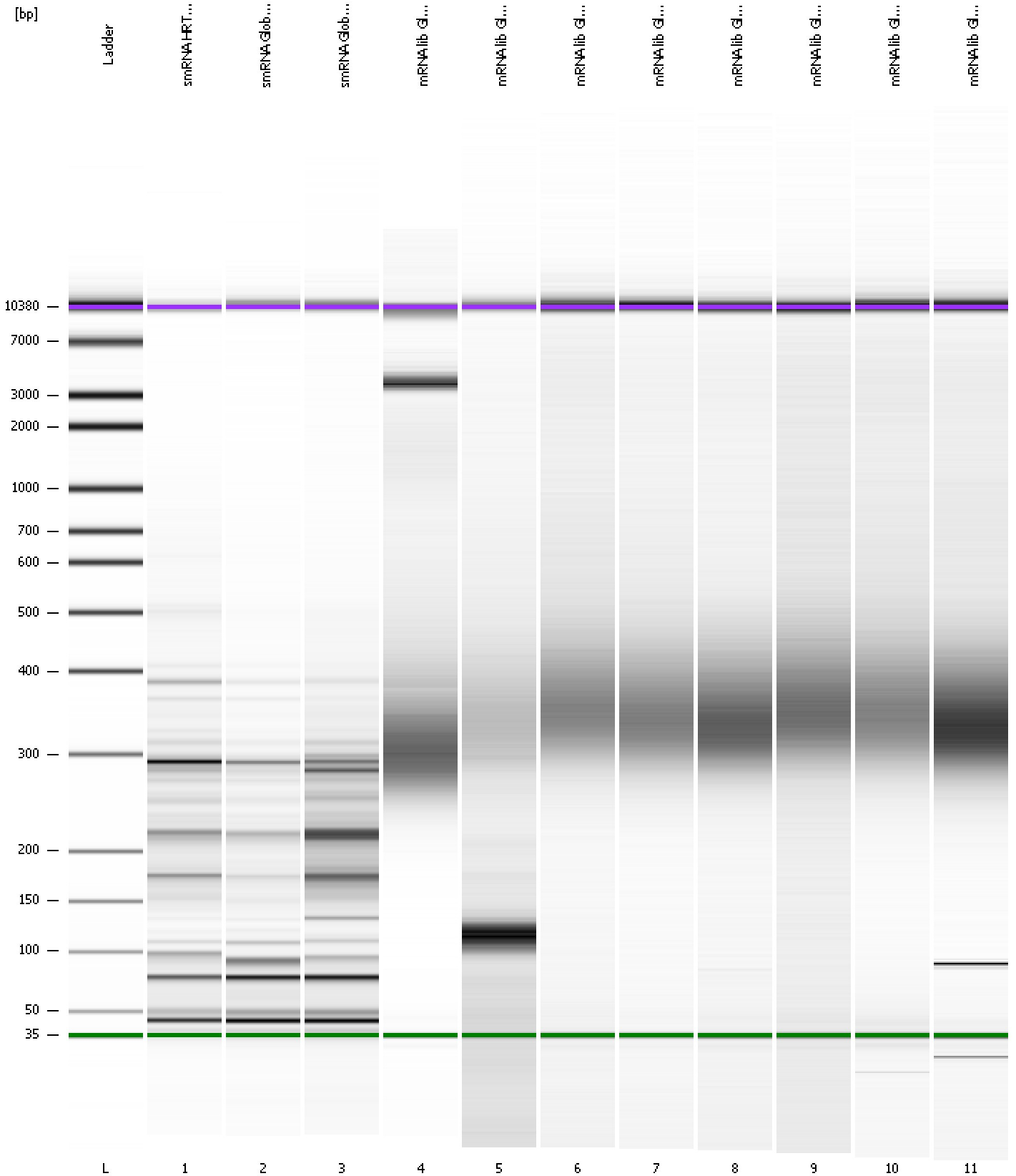
Region table for sample 11 : mRNA lib Glob ENT-1 (1/5)

From [bp]	To [bp]	Average Size [bp]	Molarity [pmol/l]	Conc. [pg/μl]	Corr. Area	% of Total	Size distribution in CV [%]	Color
249	506	352	5,282.4	1,194.81	533.7	79	14.8	Blue

Assay Class: High Sensitivity DNA Assay
Data Path: C:\...ents and Settings\Bioanalyzer\2013-07-02\2013-07-02_003.xad

Created: 7/2/2013 11:41:16 AM
Modified: 7/2/2013 12:23:26 PM

Gel Image

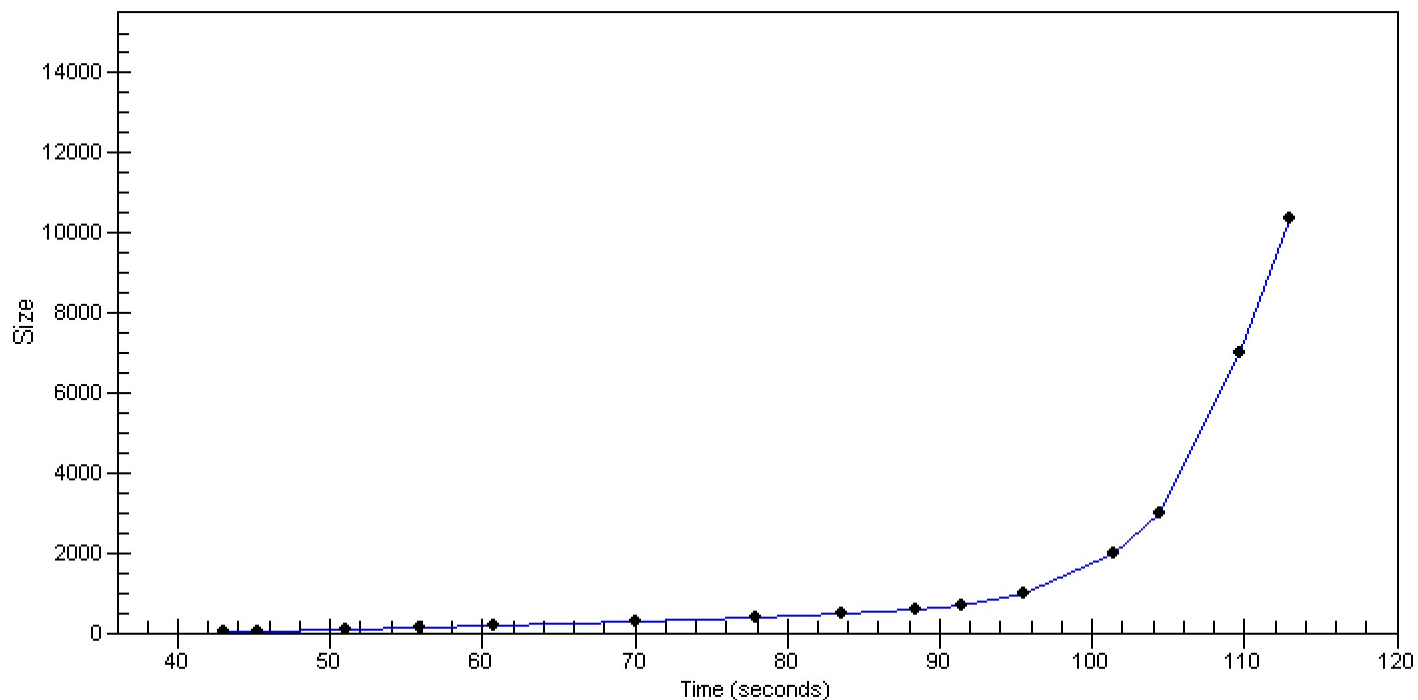


Assay Class: High Sensitivity DNA Assay
Data Path: C:\...ents and Settings\Bioanalyzer\2013-07-02\2013-07-02_003.xad

Created: 7/2/2013 11:41:16 AM
Modified: 7/2/2013 12:23:26 PM

Curves

Standard Curve



Assay Class: High Sensitivity DNA Assay
 Data Path: C:\...ents and Settings\Bioanalyzer\2013-07-02\2013-07-02_003.xad

Created: 7/2/2013 11:41:16 AM
 Modified: 7/2/2013 12:23:26 PM

Run Logbook

Description	Number	Source	Category	Sub Category	Time	Time Zone	User	Host
Run ended on port 1 (Number of wells acquired: 12)		Instrument	Run		7/2/2013 12:21:38 PM	(GMT --07:00) Pacific Standard Time	UC Davis	D8XSMGH1
Run started on port 1 (File: C:\Documents and Settings\Bioanalyzer\2013-07-02\2013-07-02_003.xad)		Instrument	Run		7/2/2013 11:41:17 AM	(GMT --07:00) Pacific Standard Time	UC Davis	D8XSMGH1
Product Number : G2938B		Instrument	Run		7/2/2013 11:41:17 AM	(GMT --07:00) Pacific Standard Time	UC Davis	D8XSMGH1
Name :		Instrument	Run		7/2/2013 11:41:17 AM	(GMT --07:00) Pacific Standard Time	UC Davis	D8XSMGH1
Vendor : Agilent Technologies		Instrument	Run		7/2/2013 11:41:17 AM	(GMT --07:00) Pacific Standard Time	UC Davis	D8XSMGH1
Serial# : DE13701086		Instrument	Run		7/2/2013 11:41:17 AM	(GMT --07:00) Pacific Standard Time	UC Davis	D8XSMGH1
Firmware : C.01.069		Instrument	Run		7/2/2013 11:41:17 AM	(GMT --07:00) Pacific Standard Time	UC Davis	D8XSMGH1
Cartridge : Electrode		Instrument	Run		7/2/2013 11:41:17 AM	(GMT --07:00) Pacific Standard Time	UC Davis	D8XSMGH1