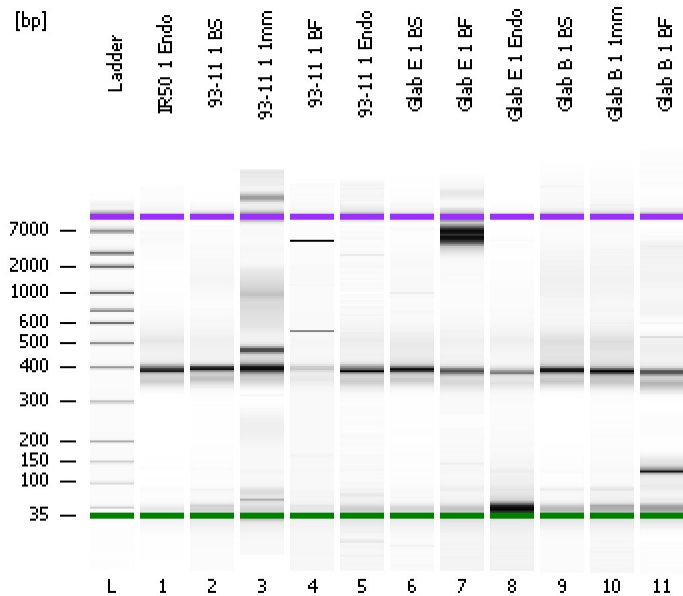


Assay Class: High Sensitivity DNA Assay  
Data Path: C:\...ents and Settings\Bioanalyzer\2013-07-02\2013-07-02\_005.xad

Created: 7/2/2013 2:59:54 PM  
Modified: 7/2/2013 3:42:01 PM

### Electrophoresis File Run Summary



#### Instrument Information:

Instrument Name: DE13701086      Firmware: C.01.069  
Serial#: DE13701086      Type: G2938B

#### Assay Information:

Assay Origin Path: C:\Program Files\Agilent\2100 bioanalyzer\2100 expert\assays\dsDNA\High Sensitivity DNA.xsy  
Assay Class: High Sensitivity DNA Assay  
Version: 1.03  
Assay Comments: Copyright © 2003-2010 Agilent Technologies

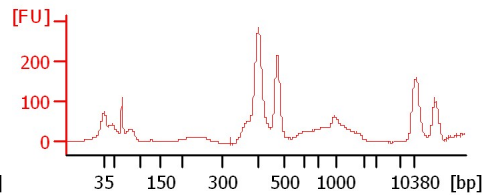
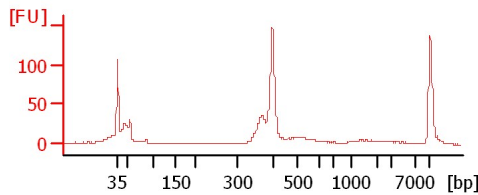
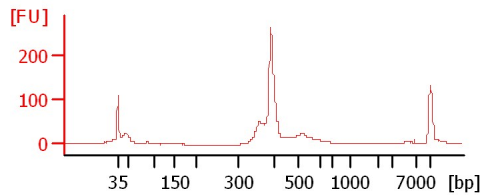
#### Chip Information:

Chip Lot #:  
Reagent Kit Lot #:  
Chip Comments:

IR50 1 Endo

93-11 1 BS

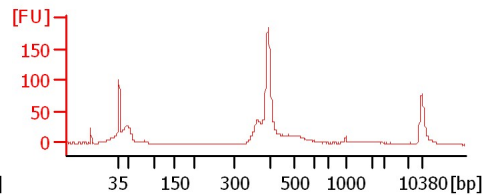
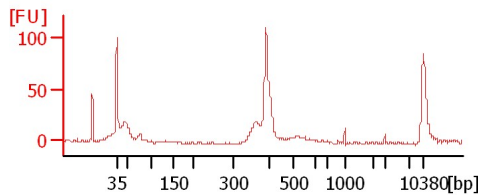
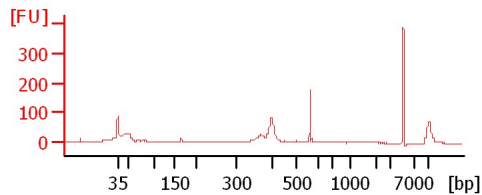
93-11 1 1mm



93-11 1 BF

93-11 1 Endo

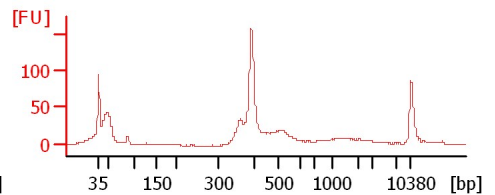
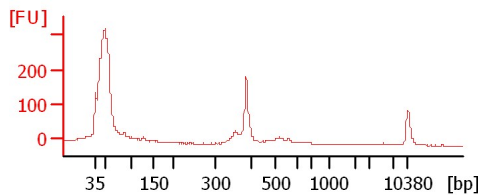
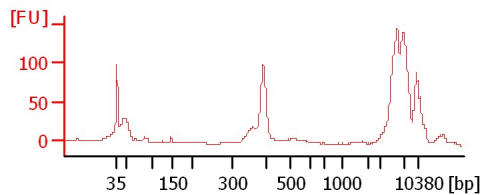
Glab E 1 BS



Glab E 1 BF

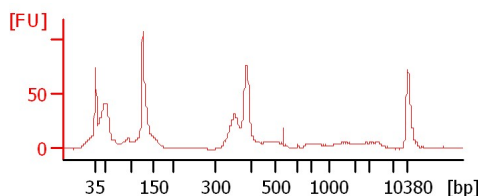
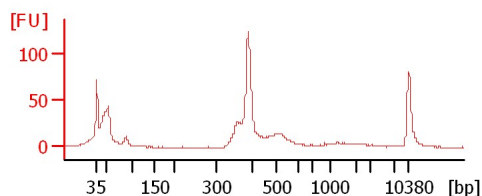
Glab E 1 Endo

Glab B 1 BS



Glab B 1 1mm

Glab B 1 BF



Assay Class: High Sensitivity DNA Assay  
Data Path: C:\...ents and Settings\Bioanalyzer\2013-07-02\2013-07-02\_005.xad

Created: 7/2/2013 2:59:54 PM  
Modified: 7/2/2013 3:42:01 PM

**Electrophoresis File Run Summary (Chip Summary)**

Sample Name	Sample Comment	Rest. Digest	Status	Observation	Result Label	Result Color
IR50 1 Endo		<input type="checkbox"/>	✓			
93-11 1 BS		<input type="checkbox"/>	✓			
93-11 1 1mm		<input type="checkbox"/>	✓			
93-11 1 BF		<input type="checkbox"/>	✓			
93-11 1 Endo		<input type="checkbox"/>	✓			
Glub E 1 BS		<input type="checkbox"/>	✓			
Glub E 1 BF		<input type="checkbox"/>	✓			
Glub E 1 Endo		<input type="checkbox"/>	✓			
Glub B 1 BS		<input type="checkbox"/>	✓			
Glub B 1 1mm		<input type="checkbox"/>	✓			
Glub B 1 BF		<input type="checkbox"/>	✓			
Ladder		<input type="checkbox"/>	✓			

**Chip Lot #**

**Reagent Kit Lot #**

**Chip Comments :**

Assay Class: High Sensitivity DNA Assay  
Data Path: C:\...ents and Settings\Bioanalyzer\2013-07-02\2013-07-02\_005.xad

Created: 7/2/2013 2:59:54 PM  
Modified: 7/2/2013 3:42:01 PM

**Electrophoresis Assay Details**

**General Analysis Settings**

Number of Available Sample and Ladder Wells (Max.) : 12  
Minimum Visible Range [s] : 32  
Maximum Visible Range [s] : 138  
Start Analysis Time Range [s] : 33  
End Analysis Time Range [s] : 137.5  
Ladder Concentration [pg/μl] : 1950  
Uses Standard Area for Ladder Fragments  
Lower Marker Concentration [pg/μl] : 125  
Upper Marker Concentration [pg/μl] : 75  
Used Upper Marker for Quantitation  
Standard Curve Fit is Point to Point  
Show Data Aligned to Lower and Upper Marker

**Integrator Settings**

Integration Start Time [s] : 33.05  
Integration End Time [s] : 137  
Slope Threshold : 0.8  
Height Threshold [FU] : 5  
Area Threshold : 0.1  
Width Threshold [s] : 0.6  
Baseline Plateau [s] : 0.5

**Filter Settings**

Filter Width [s] : 0.5  
Polynomial Order : 4

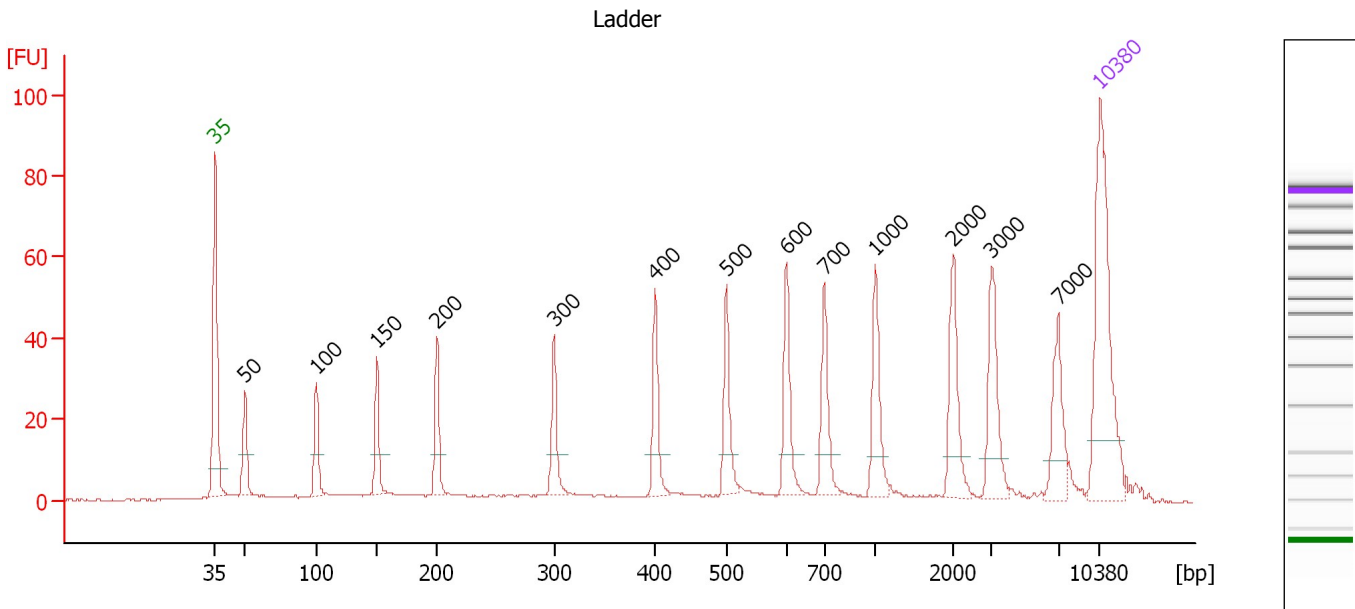
**Ladder**

Ladder Peak	Size	Area
1	35	160
2	50	210
3	100	208
4	150	221
5	200	242
6	300	270
7	400	305
8	500	306
9	600	336
10	700	321
11	1000	366
12	2000	413
13	3000	411
14	7000	400
15	10380	214

Assay Class: High Sensitivity DNA Assay  
 Data Path: C:\...ents and Settings\Bioanalyzer\2013-07-02\2013-07-02\_005.xad

Created: 7/2/2013 2:59:54 PM  
 Modified: 7/2/2013 3:42:01 PM

**Electropherogram Summary**



**Overall Results for Ladder**

Noise: 0.1

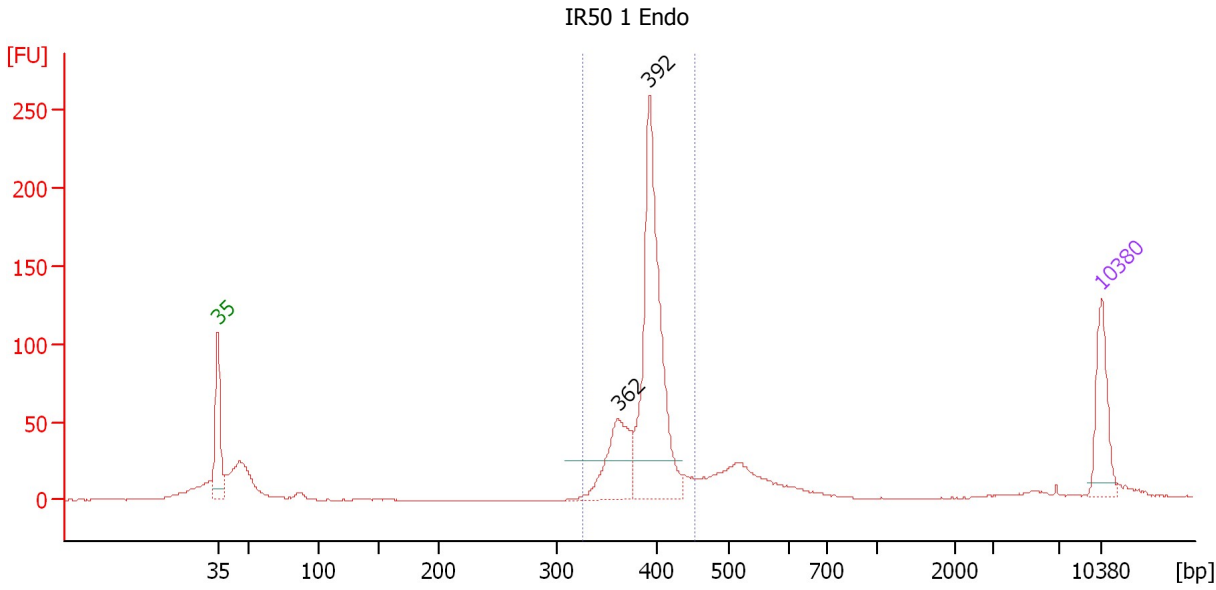
**Peak table for Ladder**

Peak	Size [bp]	Conc. [pg/µl]	Molarity [pmol/l]	Observations
1	35	125.00	5,411.3	Lower Marker
2	50	150.00	4,545.5	Ladder Peak
3	100	150.00	2,272.7	Ladder Peak
4	150	150.00	1,515.2	Ladder Peak
5	200	150.00	1,136.4	Ladder Peak
6	300	150.00	757.6	Ladder Peak
7	400	150.00	568.2	Ladder Peak
8	500	150.00	454.5	Ladder Peak
9	600	150.00	378.8	Ladder Peak
10	700	150.00	324.7	Ladder Peak
11	1,000	150.00	227.3	Ladder Peak
12	2,000	150.00	113.6	Ladder Peak
13	3,000	150.00	75.8	Ladder Peak
14	7,000	150.00	32.5	Ladder Peak
15	10,380	75.00	10.9	Upper Marker

Assay Class: High Sensitivity DNA Assay  
 Data Path: C:\...ents and Settings\Bioanalyzer\2013-07-02\2013-07-02\_005.xad

Created: 7/2/2013 2:59:54 PM  
 Modified: 7/2/2013 3:42:01 PM

**Electropherogram Summary Continued ...**



**Setpoint Deviations for sample 1 : IR50 1 Endo**

Height Threshold [FU] : 25

**Overall Results for sample 1 : IR50 1 Endo**

Number of peaks found: 2      Corr. Area 1: 688.0  
 Noise: 0.2

**Peak table for sample 1 : IR50 1 Endo**

Peak	Size [bp]	Conc. [pg/μl]	Molarity [pmol/l]	Observations
1	35	125.00	5,411.3	Lower Marker
2	362	149.10	624.9	
3	392	471.52	1,822.1	
4	10,380	75.00	10.9	Upper Marker

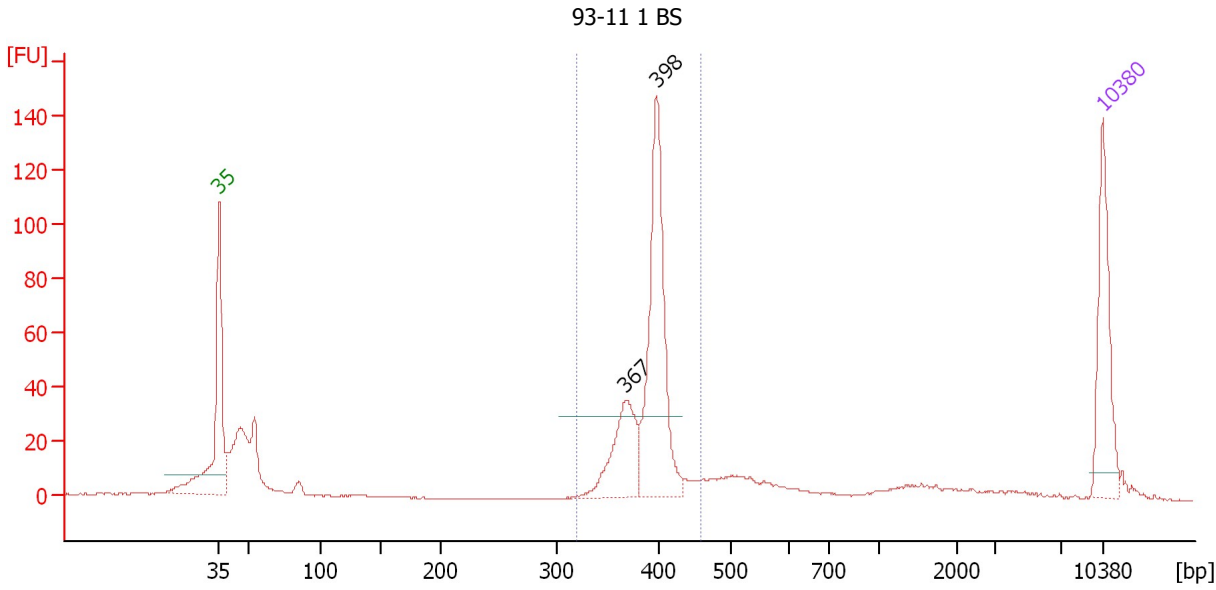
**Region table for sample 1 : IR50 1 Endo**

From [bp]	To [bp]	Average Size [bp]	Molarity [pmol/l]	Conc. [pg/μl]	Corr. Area	% of Total	Size distribution in CV [%]	Color
326	453	390	2,422.0	622.17	688.0	65	5.3	Blue

Assay Class: High Sensitivity DNA Assay  
 Data Path: C:\...ents and Settings\Bioanalyzer\2013-07-02\2013-07-02\_005.xad

Created: 7/2/2013 2:59:54 PM  
 Modified: 7/2/2013 3:42:01 PM

**Electropherogram Summary Continued ...**



**Setpoint Deviations for sample 2 : 93-11 1 BS**

Height Threshold [FU] : 30

**Overall Results for sample 2 : 93-11 1 BS**

Number of peaks found: 2      Corr. Area 1: 393.1  
 Noise: 0.2

**Peak table for sample 2 : 93-11 1 BS**

Peak	Size [bp]	Conc. [pg/μl]	Molarity [pmol/l]	Observations
1	35	125.00	5,411.3	Lower Marker
2	367	93.36	385.9	
3	398	228.34	868.9	
4	10,380	75.00	10.9	Upper Marker

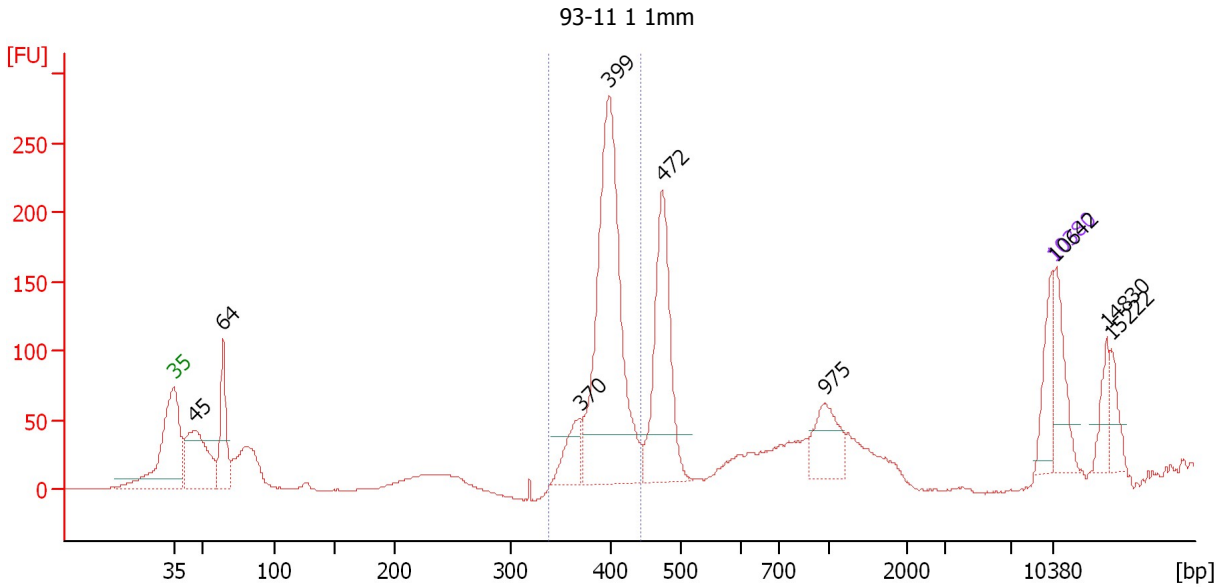
**Region table for sample 2 : 93-11 1 BS**

From [bp]	To [bp]	Average Size [bp]	Molarity [pmol/l]	Conc. [pg/μl]	Corr. Area	% of Total	Size distribution in CV [%]	Color
319	459	391	1,299.2	334.76	393.1	57	5.4	Blue

Assay Class: High Sensitivity DNA Assay  
 Data Path: C:\...ents and Settings\Bioanalyzer\2013-07-02\2013-07-02\_005.xad

Created: 7/2/2013 2:59:54 PM  
 Modified: 7/2/2013 3:42:01 PM

**Electropherogram Summary Continued ...**



**Setpoint Deviations for sample 3 : 93-11 1 1mm**

Height Threshold [FU] : 35

**Overall Results for sample 3 : 93-11 1 1mm**

Number of peaks found: 9      Corr. Area 1: 925.5  
 Noise: 0.3

**Peak table for sample 3 : 93-11 1 1mm**

Peak	Size [bp]	Conc. [pg/µl]	Molarity [pmol/l]	Observations
1	35	125.00	5,411.3	Lower Marker
2	45	308.94	10,345.2	
3	64	185.44	4,387.5	
4	370	93.08	381.7	
5	399	765.07	2,907.7	
6	472	365.57	1,172.3	
7	975	107.19	166.5	
8	10,380	75.00	10.9	Upper Marker
9	10,642	0.00	0.0	
10	14,830	0.00	0.0	
11	15,222	0.00	0.0	

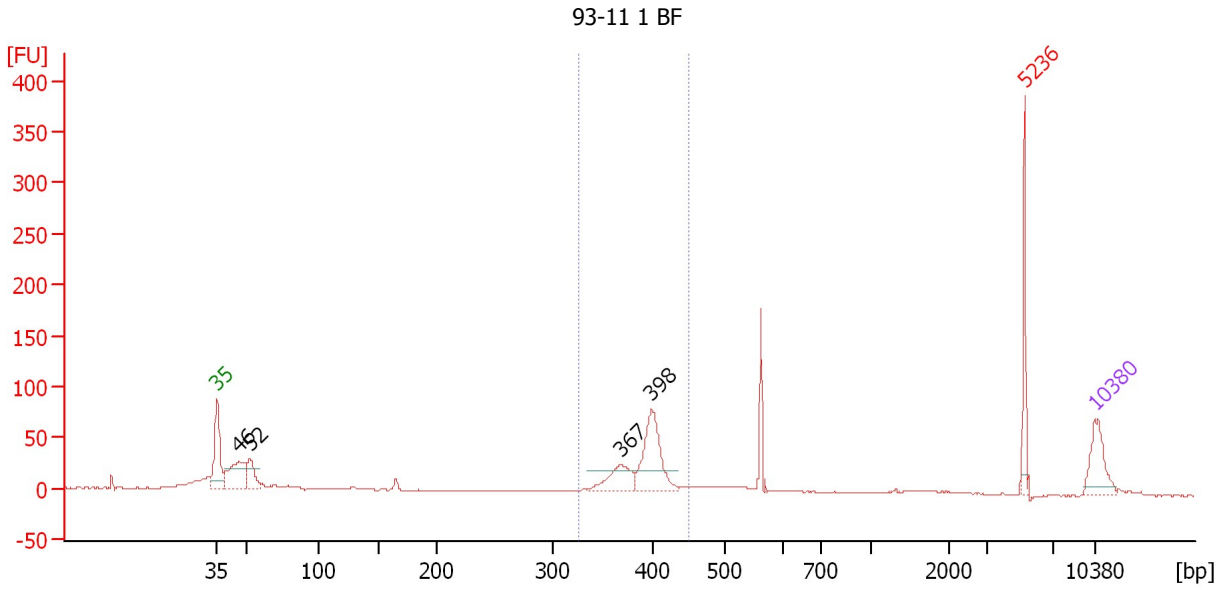
**Region table for sample 3 : 93-11 1 1mm**

From [bp]	To [bp]	Average Size [bp]	Molarity [pmol/l]	Conc. [pg/µl]	Corr. Area	% of Total	Size distribution in CV [%]	Color
338	444	397	3,177.8	830.25	925.5	37	4.5	Blue

Assay Class: High Sensitivity DNA Assay  
 Data Path: C:\...ents and Settings\Bioanalyzer\2013-07-02\2013-07-02\_005.xad

Created: 7/2/2013 2:59:54 PM  
 Modified: 7/2/2013 3:42:01 PM

**Electropherogram Summary Continued ...**



**Setpoint Deviations for sample 4 : 93-11 1 BF**

Height Threshold [FU] : 20

**Overall Results for sample 4 : 93-11 1 BF**

Number of peaks found: 4      Corr. Area 1: 253.8  
 Noise: 0.5

**Peak table for sample 4 : 93-11 1 BF**

Peak	Size [bp]	Conc. [pg/μl]	Molarity [pmol/l]	Observations
1	35	125.00	5,411.3	Lower Marker
2	46	182.74	6,044.6	
3	52	82.40	2,398.2	
4	367	101.27	418.0	
5	398	205.97	784.4	
6	5,236	76.75	22.2	excluded peak
7	10,380	75.00	10.9	Upper Marker

**Region table for sample 4 : 93-11 1 BF**

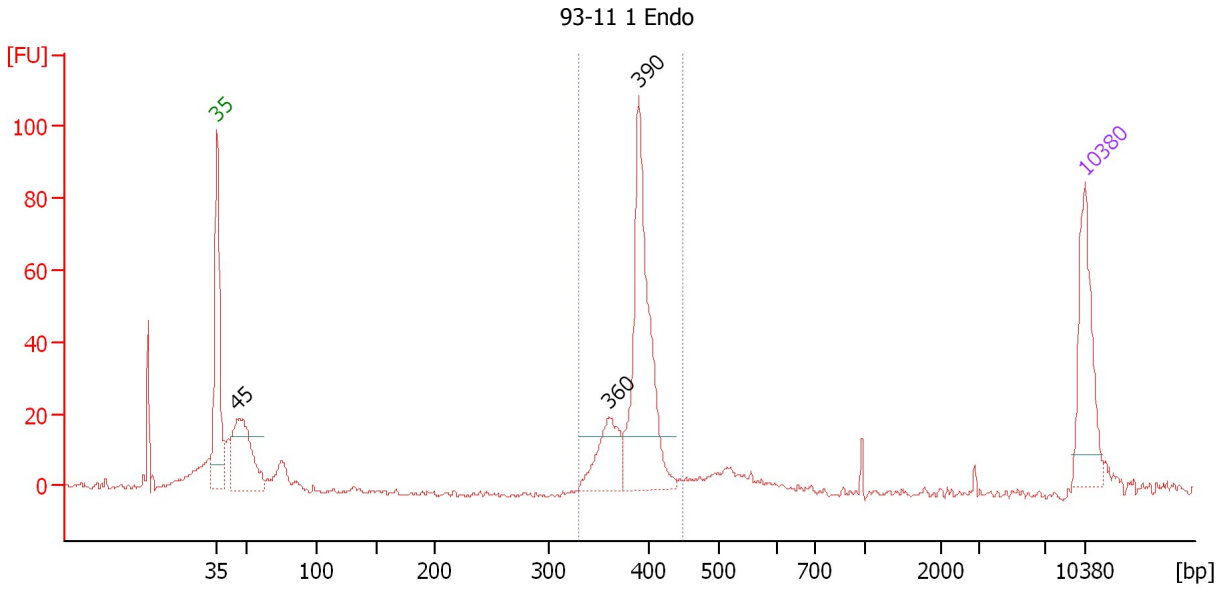
From [bp]	To [bp]	Average Size [bp]	Molarity [pmol/l]	Conc. [pg/μl]	Corr. Area	% of Total	Size distribution in CV [%]	Color
325	450	390	1,234.7	316.93	253.8	36	5.5	Blue



Assay Class: High Sensitivity DNA Assay  
 Data Path: C:\...ents and Settings\Bioanalyzer\2013-07-02\2013-07-02\_005.xad

Created: 7/2/2013 2:59:54 PM  
 Modified: 7/2/2013 3:42:01 PM

**Electropherogram Summary Continued ...**



**Setpoint Deviations for sample 5 : 93-11 1 Endo**

Height Threshold [FU] : 15

**Overall Results for sample 5 : 93-11 1 Endo**

Number of peaks found: 3                      Corr. Area 1: 260.8  
 Noise: 0.6

**Peak table for sample 5 : 93-11 1 Endo**

Peak	Size [bp]	Conc. [pg/µl]	Molarity [pmol/l]	Observations
1	35	125.00	5,411.3	Lower Marker
2	45	147.27	4,947.0	
3	360	69.84	293.8	
4	390	239.44	929.5	
5	10,380	75.00	10.9	Upper Marker

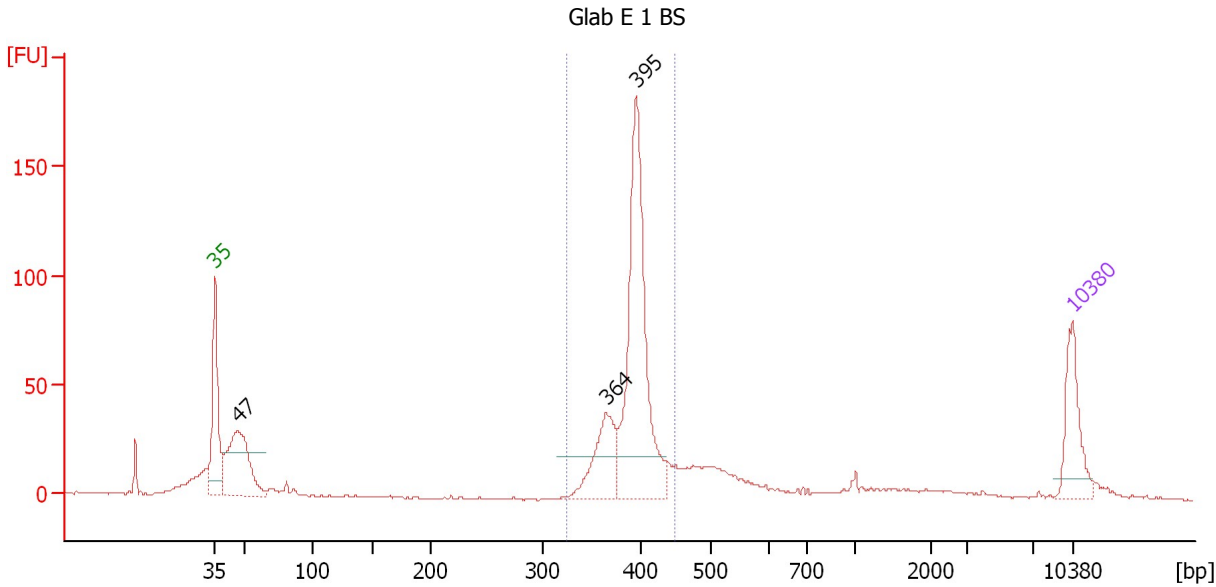
**Region table for sample 5 : 93-11 1 Endo**

From [bp]	To [bp]	Average Size [bp]	Molarity [pmol/l]	Conc. [pg/µl]	Corr. Area	% of Total	Size distribution in CV [%]	Color
329	449	387	1,185.2	302.61	260.8	55	4.8	Blue

Assay Class: High Sensitivity DNA Assay  
 Data Path: C:\...ents and Settings\Bioanalyzer\2013-07-02\2013-07-02\_005.xad

Created: 7/2/2013 2:59:54 PM  
 Modified: 7/2/2013 3:42:01 PM

**Electropherogram Summary Continued ...**



**Setpoint Deviations for sample 6 : Glab E 1 BS**

Height Threshold [FU] : 20

**Overall Results for sample 6 : Glab E 1 BS**

Number of peaks found: 3                      Corr. Area 1: 500.7  
 Noise: 0.3

**Peak table for sample 6 : Glab E 1 BS**

Peak	Size [bp]	Conc. [pg/μl]	Molarity [pmol/l]	Observations
1	35	125.00	5,411.3	Lower Marker
2	47	250.07	8,129.5	
3	364	127.10	529.3	
4	395	440.01	1,688.8	
5	10,380	75.00	10.9	Upper Marker

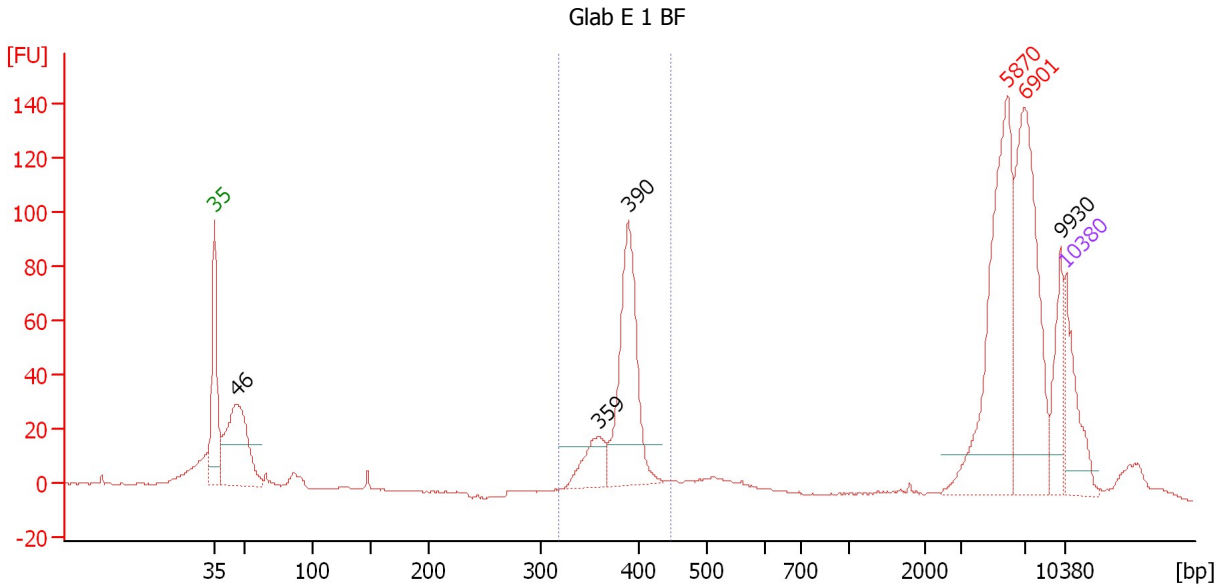
**Region table for sample 6 : Glab E 1 BS**

From [bp]	To [bp]	Average Size [bp]	Molarity [pmol/l]	Conc. [pg/μl]	Corr. Area	% of Total	Size distribution in CV [%]	Color
323	449	391	2,203.5	567.72	500.7	54	5.2	Blue

Assay Class: High Sensitivity DNA Assay  
 Data Path: C:\...ents and Settings\Bioanalyzer\2013-07-02\2013-07-02\_005.xad

Created: 7/2/2013 2:59:54 PM  
 Modified: 7/2/2013 3:42:01 PM

**Electropherogram Summary Continued ...**



**Setpoint Deviations for sample 7 : Glab E 1 BF**

Height Threshold [FU] : 15

**Overall Results for sample 7 : Glab E 1 BF**

Number of peaks found: 4                      Corr. Area 1: 297.4  
 Noise: 0.2

**Peak table for sample 7 : Glab E 1 BF**

Peak	Size [bp]	Conc. [pg/μl]	Molarity [pmol/l]	Observations
1	35	125.00	5,411.3	Lower Marker
2	46	280.34	9,151.2	
3	359	72.23	304.7	
4	390	273.09	1,060.0	
5	5,870	284.50	73.4	excluded peak
6	6,901	263.43	57.8	excluded peak
7	9,930	60.47	9.2	
8	10,380	75.00	10.9	Upper Marker

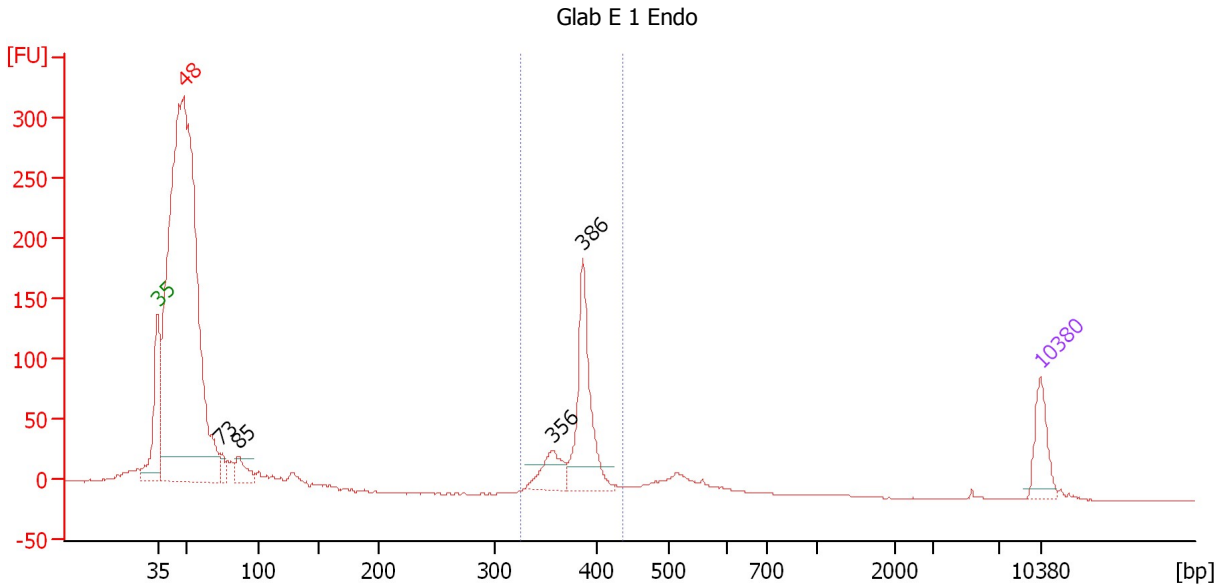
**Region table for sample 7 : Glab E 1 BF**

From [bp]	To [bp]	Average Size [bp]	Molarity [pmol/l]	Conc. [pg/μl]	Corr. Area	% of Total	Size distribution in CV [%]	Color
318	449	384	1,505.1	380.94	297.4	23	5.3	Blue

Assay Class: High Sensitivity DNA Assay  
 Data Path: C:\...ents and Settings\Bioanalyzer\2013-07-02\2013-07-02\_005.xad

Created: 7/2/2013 2:59:54 PM  
 Modified: 7/2/2013 3:42:01 PM

**Electropherogram Summary Continued ...**



**Setpoint Deviations for sample 8 : Glab E 1 Endo**

Height Threshold [FU] : 20

**Overall Results for sample 8 : Glab E 1 Endo**

Number of peaks found: 4                      Corr. Area 1: 378.1  
 Noise: 0.3

**Peak table for sample 8 : Glab E 1 Endo**

Peak	Size [bp]	Conc. [pg/μl]	Molarity [pmol/l]	Observations
1	35	125.00	5,411.3	Lower Marker
2	48	2,905.61	91,568.1	excluded peak
3	73	40.21	833.9	
4	85	76.74	1,362.4	
5	356	93.39	397.2	
6	386	304.99	1,195.8	
7	10,380	75.00	10.9	Upper Marker

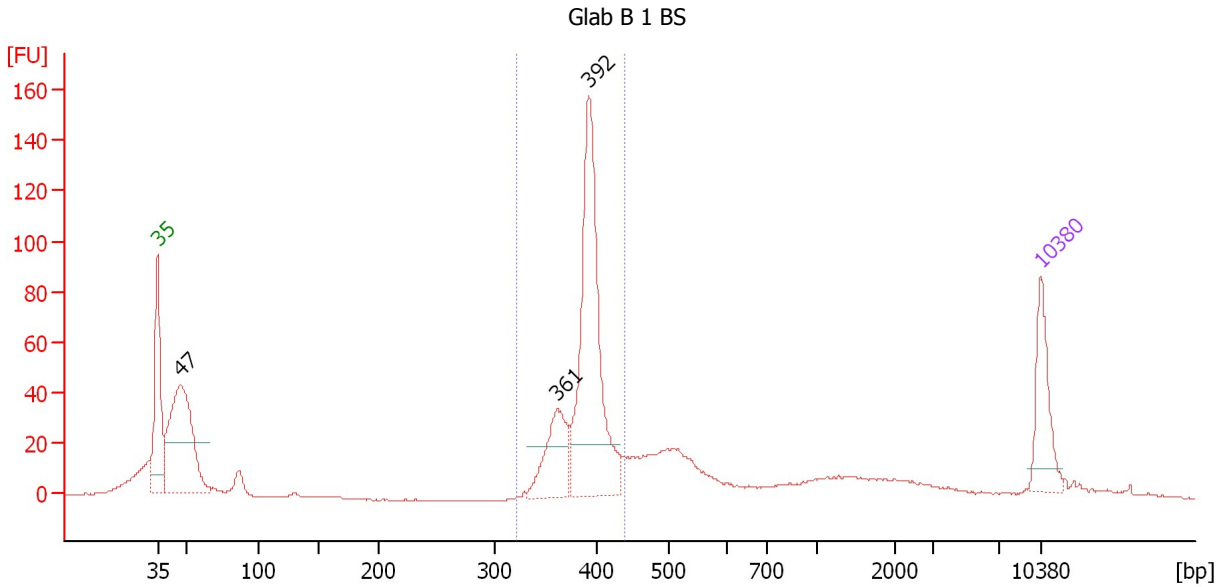
**Region table for sample 8 : Glab E 1 Endo**

From [bp]	To [bp]	Average Size [bp]	Molarity [pmol/l]	Conc. [pg/μl]	Corr. Area	% of Total	Size distribution in CV [%]	Color
325	438	382	1,587.1	399.38	378.1	15	4.5	Blue

Assay Class: High Sensitivity DNA Assay  
 Data Path: C:\...ents and Settings\Bioanalyzer\2013-07-02\2013-07-02\_005.xad

Created: 7/2/2013 2:59:54 PM  
 Modified: 7/2/2013 3:42:01 PM

**Electropherogram Summary Continued ...**



**Setpoint Deviations for sample 9 : Glab B 1 BS**

Height Threshold [FU] : 20

**Overall Results for sample 9 : Glab B 1 BS**

Number of peaks found: 3                      Corr. Area 1: 439.5  
 Noise: 0.2

**Peak table for sample 9 : Glab B 1 BS**

Peak	Size [bp]	Conc. [pg/μl]	Molarity [pmol/l]	Observations
1	35	125.00	5,411.3	Lower Marker
2	47	376.78	12,269.7	
3	361	121.71	510.8	
4	392	420.96	1,626.4	
5	10,380	75.00	10.9	Upper Marker

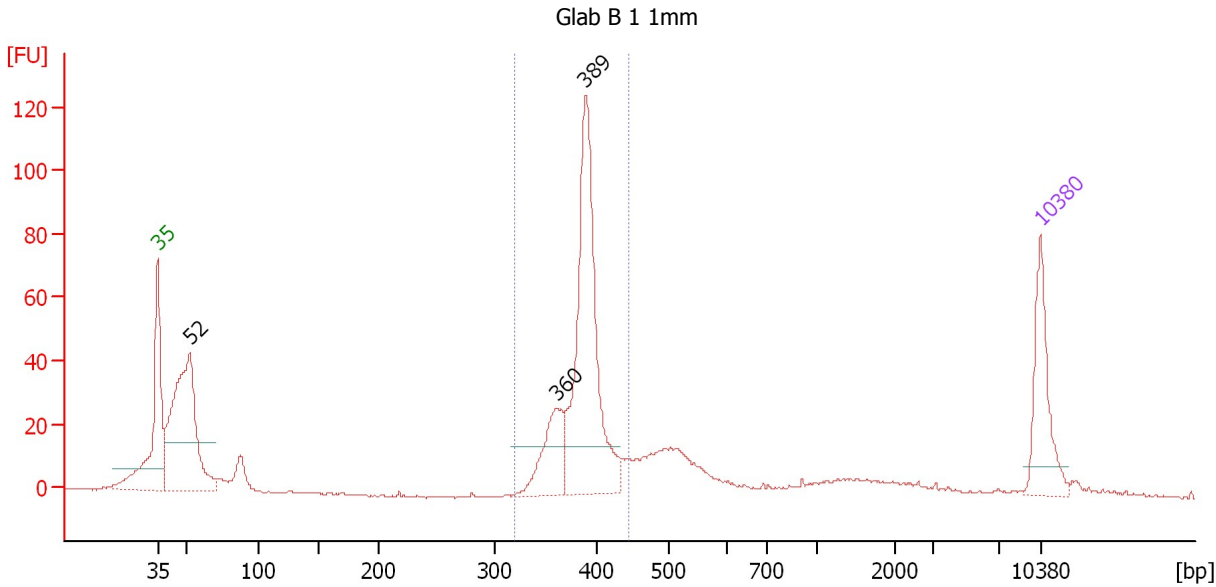
**Region table for sample 9 : Glab B 1 BS**

From [bp]	To [bp]	Average Size [bp]	Molarity [pmol/l]	Conc. [pg/μl]	Corr. Area	% of Total	Size distribution in CV [%]	Color
321	440	389	2,148.8	550.11	439.5	43	5.1	Blue

Assay Class: High Sensitivity DNA Assay  
 Data Path: C:\...ents and Settings\Bioanalyzer\2013-07-02\2013-07-02\_005.xad

Created: 7/2/2013 2:59:54 PM  
 Modified: 7/2/2013 3:42:01 PM

**Electropherogram Summary Continued ...**



**Setpoint Deviations for sample 10 : Glab B 1 1mm**

Height Threshold [FU] : 15

**Overall Results for sample 10 : Glab B 1 1mm**

Number of peaks found: 3                      Corr. Area 1: 357.0  
 Noise: 0.2

**Peak table for sample 10 : Glab B 1 1mm**

Peak	Size [bp]	Conc. [pg/μl]	Molarity [pmol/l]	Observations
1	35	125.00	5,411.3	Lower Marker
2	52	351.55	10,272.7	
3	360	88.55	372.7	
4	389	334.80	1,303.4	
5	10,380	75.00	10.9	Upper Marker

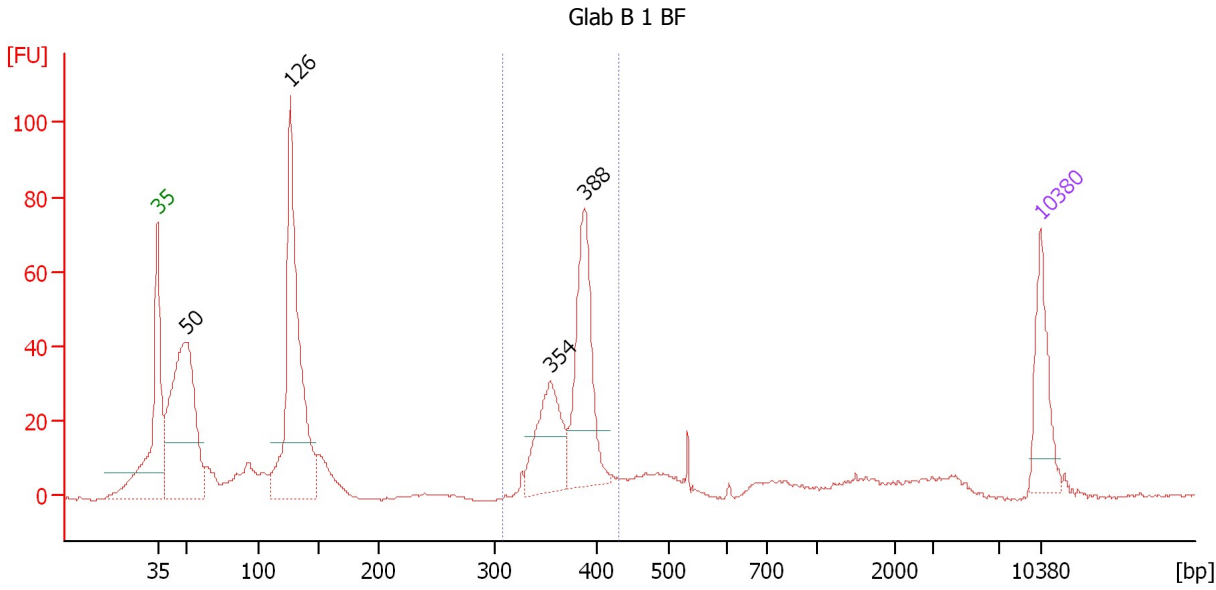
**Region table for sample 10 : Glab B 1 1mm**

From [bp]	To [bp]	Average Size [bp]	Molarity [pmol/l]	Conc. [pg/μl]	Corr. Area	% of Total	Size distribution in CV [%]	Color
319	445	386	1,702.8	433.10	357.0	45	5.3	Blue

Assay Class: High Sensitivity DNA Assay  
 Data Path: C:\...ents and Settings\Bioanalyzer\2013-07-02\2013-07-02\_005.xad

Created: 7/2/2013 2:59:54 PM  
 Modified: 7/2/2013 3:42:01 PM

**Electropherogram Summary Continued ...**



**Setpoint Deviations for sample 11 : Glab B 1 BF**

Height Threshold [FU] : 15

**Overall Results for sample 11 : Glab B 1 BF**

Number of peaks found: 4                      Corr. Area 1: 254.8  
 Noise: 0.3

**Peak table for sample 11 : Glab B 1 BF**

Peak	Size [bp]	Conc. [pg/μl]	Molarity [pmol/l]	Observations
1	35	125.00	5,411.3	Lower Marker
2	50	456.06	13,946.8	
3	126	484.79	5,817.6	
4	354	142.98	612.5	
5	388	214.31	836.7	
6	10,380	75.00	10.9	Upper Marker

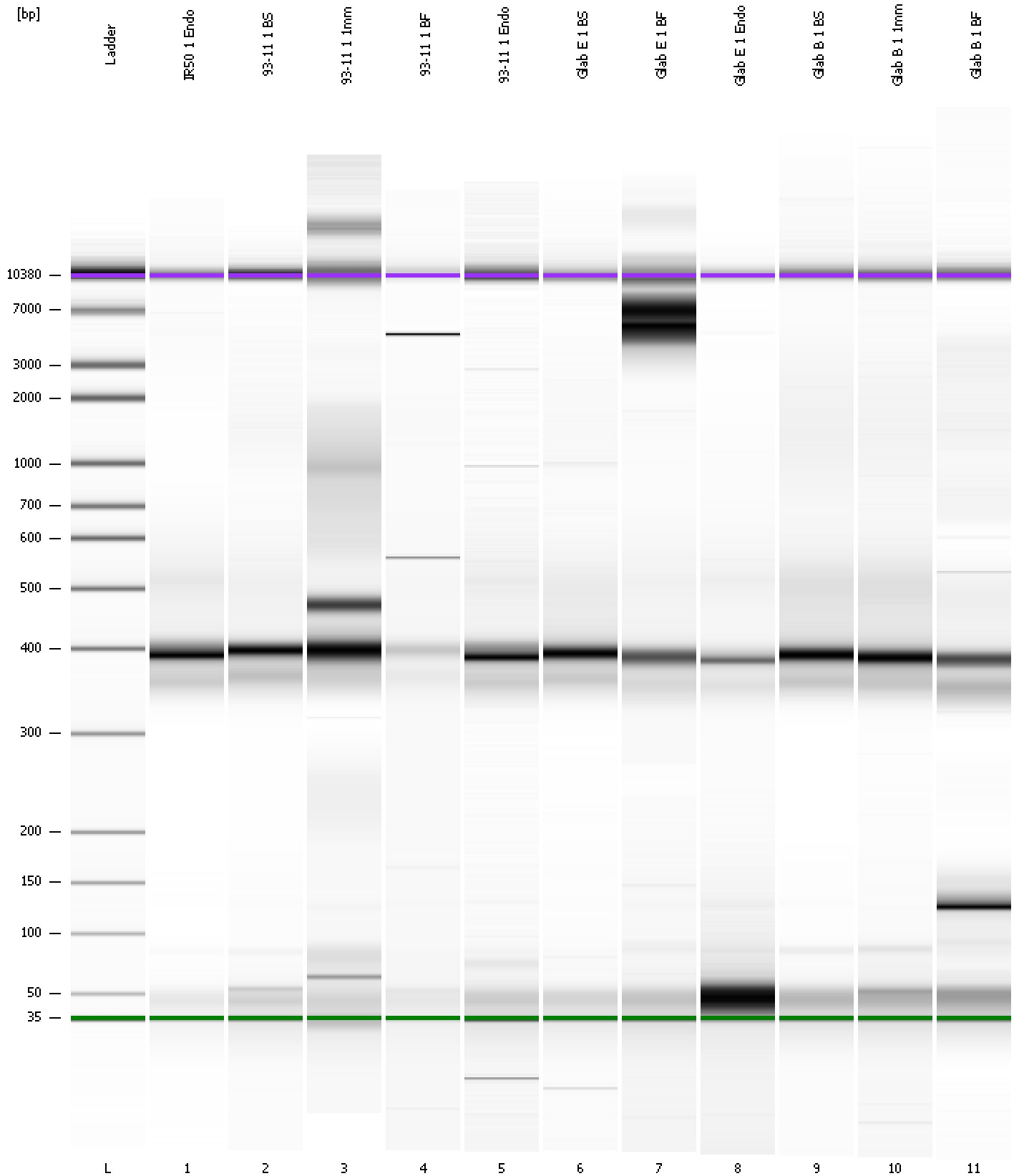
**Region table for sample 11 : Glab B 1 BF**

From [bp]	To [bp]	Average Size [bp]	Molarity [pmol/l]	Conc. [pg/μl]	Corr. Area	% of Total	Size distribution in CV [%]	Color
308	430	375	1,592.1	393.59	254.8	29	5.7	Blue

Assay Class: High Sensitivity DNA Assay  
Data Path: C:\...ents and Settings\Bioanalyzer\2013-07-02\2013-07-02\_005.xad

Created: 7/2/2013 2:59:54 PM  
Modified: 7/2/2013 3:42:01 PM

**Gel Image**



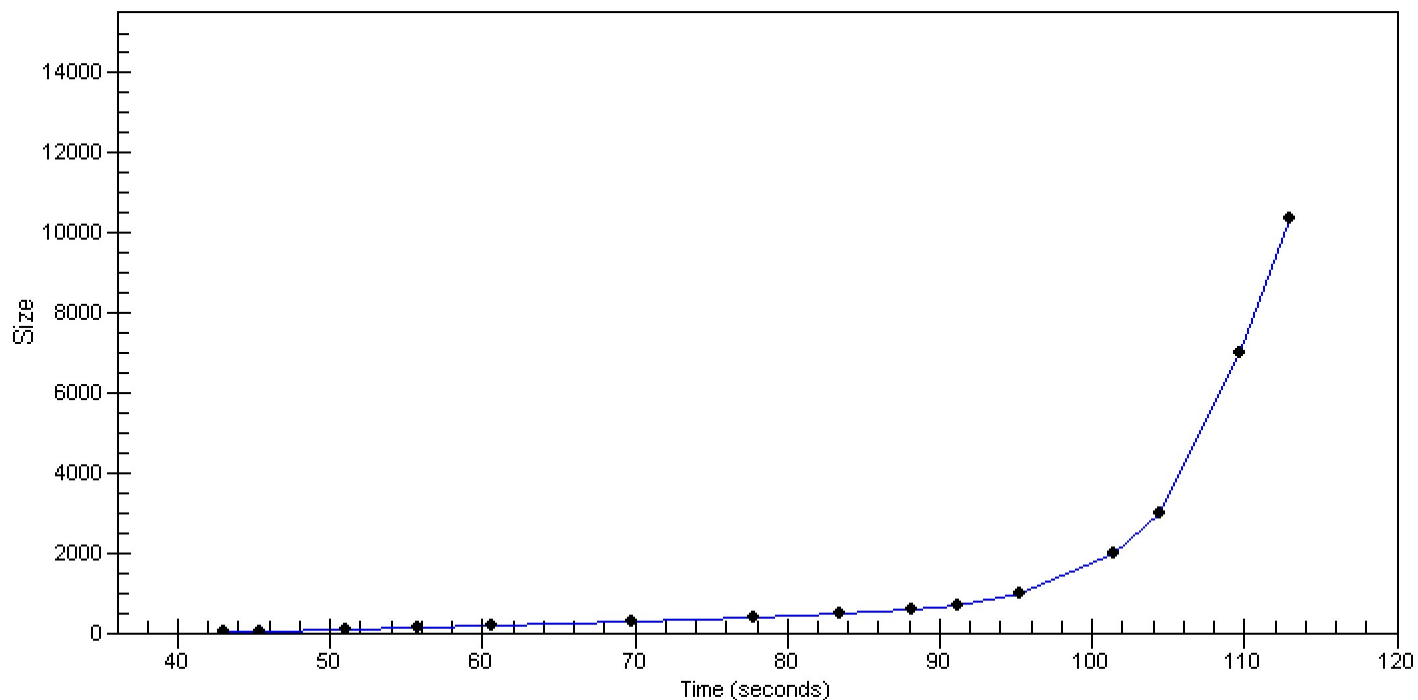


Assay Class: High Sensitivity DNA Assay  
Data Path: C:\...ents and Settings\Bioanalyzer\2013-07-02\2013-07-02\_005.xad

Created: 7/2/2013 2:59:54 PM  
Modified: 7/2/2013 3:42:01 PM

**Curves**

**Standard Curve**



Assay Class: High Sensitivity DNA Assay  
 Data Path: C:\...ents and Settings\Bioanalyzer\2013-07-02\2013-07-02\_005.xad

Created: 7/2/2013 2:59:54 PM  
 Modified: 7/2/2013 3:42:01 PM

**Run Logbook**

Description	Number	Source	Category	Sub Category	Time	Time Zone	User	Host
Run ended on port 1 (Number of wells acquired: 12)		Instrument	Run		7/2/2013 3:40:22 PM	(GMT --07:00) Pacific Standard Time	UC Davis	D8XSMGH1
Run started on port 1 (File: C:\Documents and Settings\Bioanalyzer\2013-07-02\2013-07-02_005.xad)		Instrument	Run		7/2/2013 2:59:59 PM	(GMT --07:00) Pacific Standard Time	UC Davis	D8XSMGH1
Product Number : G2938B		Instrument	Run		7/2/2013 2:59:59 PM	(GMT --07:00) Pacific Standard Time	UC Davis	D8XSMGH1
Name :		Instrument	Run		7/2/2013 2:59:59 PM	(GMT --07:00) Pacific Standard Time	UC Davis	D8XSMGH1
Vendor : Agilent Technologies		Instrument	Run		7/2/2013 2:59:59 PM	(GMT --07:00) Pacific Standard Time	UC Davis	D8XSMGH1
Serial# : DE13701086		Instrument	Run		7/2/2013 2:59:59 PM	(GMT --07:00) Pacific Standard Time	UC Davis	D8XSMGH1
Firmware : C.01.069		Instrument	Run		7/2/2013 2:59:59 PM	(GMT --07:00) Pacific Standard Time	UC Davis	D8XSMGH1
Cartridge : Electrode		Instrument	Run		7/2/2013 2:59:59 PM	(GMT --07:00) Pacific Standard Time	UC Davis	D8XSMGH1