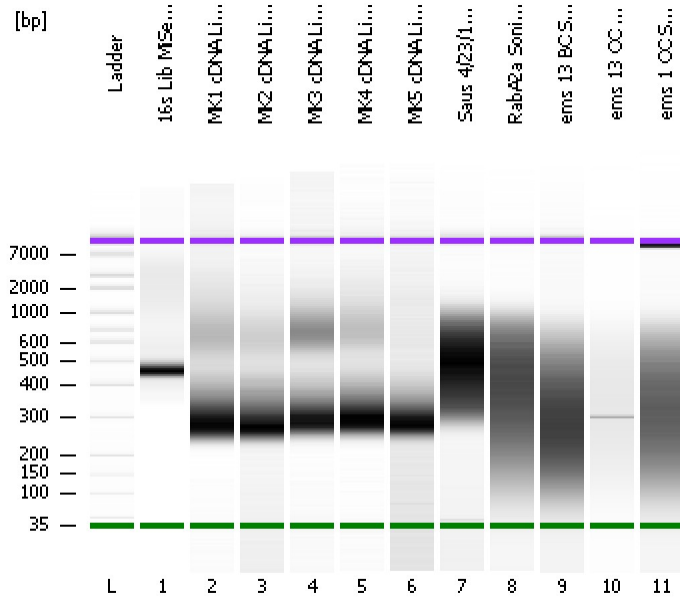


Assay Class: High Sensitivity DNA Assay
 Data Path: C:\...ents and Settings\Bioanalyzer\2013-07-03\2013-07-03_001.xad

Created: 7/3/2013 10:34:26 AM
 Modified: 7/3/2013 11:18:52 AM

Electrophoresis File Run Summary



Instrument Information:

Instrument Name: DE13701086 Firmware: C.01.069
 Serial#: DE13701086 Type: G2938B

Assay Information:

Assay Origin Path: C:\Program Files\Agilent\2100 bioanalyzer\2100 expert\assays\dsDNA\High Sensitivity DNA.xsy
 Assay Class: High Sensitivity DNA Assay
 Version: 1.03
 Assay Comments: Copyright © 2003-2010 Agilent Technologies

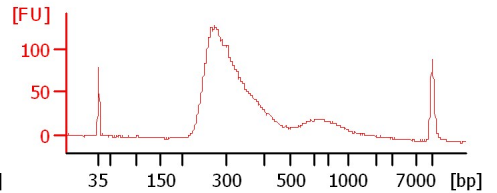
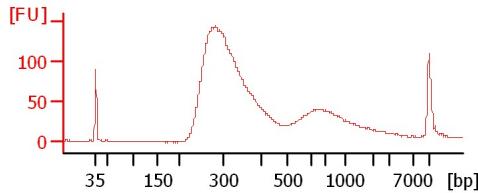
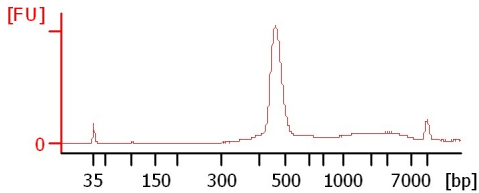
Chip Information:

Chip Lot #:
 Reagent Kit Lot #:
 Chip Comments:

16s Lib MiSeq 1:30

MK1 cDNA Lib 1:8

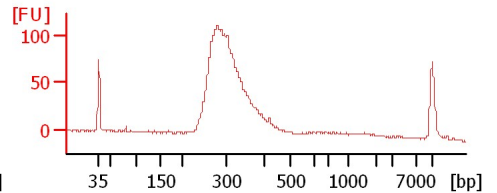
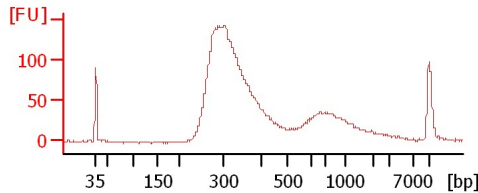
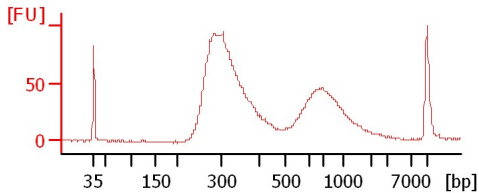
MK2 cDNA Lib 1:8



MK3 cDNA Lib 1:8

MK4 cDNA Lib 1:8

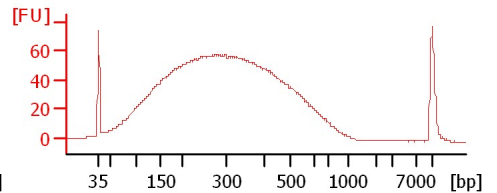
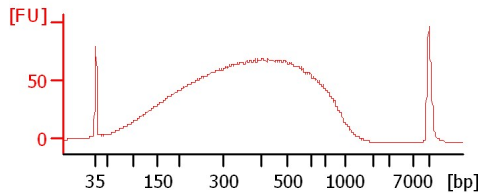
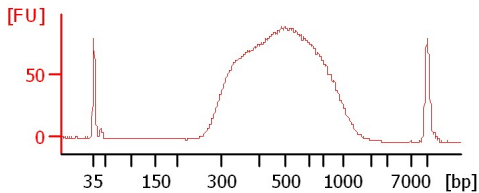
MK5 cDNA Lib 1:8



Saus 4/23/13 1:2

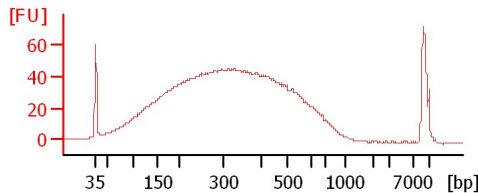
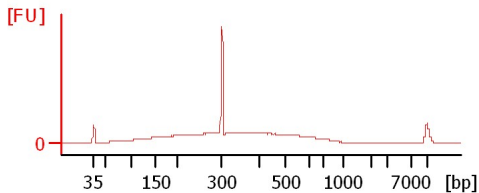
RabA2a Soni 1:3

ems 13 BC Soni 1:3



ems 13 OC Soni 1:3

ems 1 OC Soni 1:3



Assay Class: High Sensitivity DNA Assay
Data Path: C:\...ents and Settings\Bioanalyzer\2013-07-03\2013-07-03_001.xad

Created: 7/3/2013 10:34:26 AM
Modified: 7/3/2013 11:18:52 AM

Electrophoresis File Run Summary (Chip Summary)

Sample Name	Sample Comment	Rest. Digest	Status	Observation	Result Label	Result Color
16s Lib MiSeq 1:30		<input type="checkbox"/>	✓			
MK1 cDNA Lib 1:8		<input type="checkbox"/>	✓			
MK2 cDNA Lib 1:8		<input type="checkbox"/>	✓			
MK3 cDNA Lib 1:8		<input type="checkbox"/>	✓			
MK4 cDNA Lib 1:8		<input type="checkbox"/>	✓			
MK5 cDNA Lib 1:8		<input type="checkbox"/>	✓			
Saus 4/23/13 1:2		<input type="checkbox"/>	✓			
RabA2a Soni 1:3		<input type="checkbox"/>	✓			
ems 13 BC Soni 1:3		<input type="checkbox"/>	✓			
ems 13 OC Soni 1:3		<input type="checkbox"/>	✓			
ems 1 OC Soni 1:3		<input type="checkbox"/>	✓			
Ladder		<input type="checkbox"/>	✓			

Chip Lot #

Reagent Kit Lot #

Chip Comments :

Assay Class: High Sensitivity DNA Assay
Data Path: C:\...ents and Settings\Bioanalyzer\2013-07-03\2013-07-03_001.xad

Created: 7/3/2013 10:34:26 AM
Modified: 7/3/2013 11:18:52 AM

Electrophoresis Assay Details

General Analysis Settings

Number of Available Sample and Ladder Wells (Max.) : 12
Minimum Visible Range [s] : 32
Maximum Visible Range [s] : 138
Start Analysis Time Range [s] : 33
End Analysis Time Range [s] : 137.5
Ladder Concentration [pg/μl] : 1950
Uses Standard Area for Ladder Fragments
Lower Marker Concentration [pg/μl] : 125
Upper Marker Concentration [pg/μl] : 75
Used Upper Marker for Quantitation
Standard Curve Fit is Point to Point
Show Data Aligned to Lower and Upper Marker

Integrator Settings

Integration Start Time [s] : 33.05
Integration End Time [s] : 137
Slope Threshold : 0.8
Height Threshold [FU] : 5
Area Threshold : 0.1
Width Threshold [s] : 0.6
Baseline Plateau [s] : 0.5

Filter Settings

Filter Width [s] : 0.5
Polynomial Order : 4

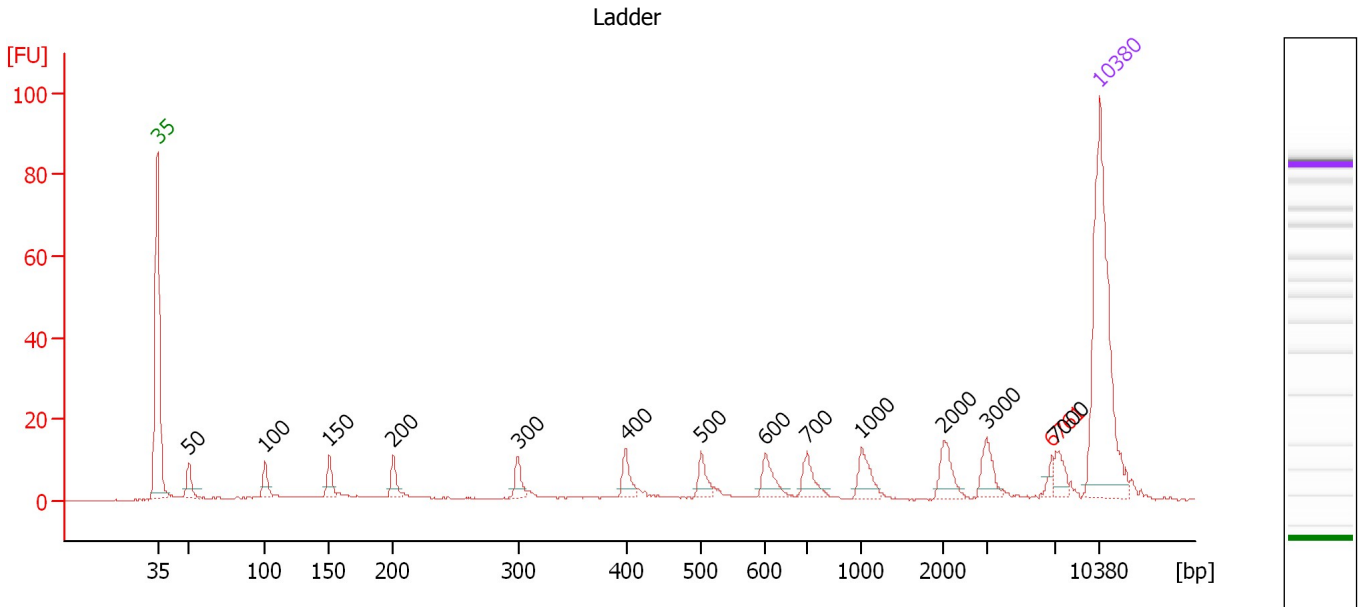
Ladder

Ladder Peak	Size	Area
1	35	160
2	50	210
3	100	208
4	150	221
5	200	242
6	300	270
7	400	305
8	500	306
9	600	336
10	700	321
11	1000	366
12	2000	413
13	3000	411
14	7000	400
15	10380	214

Assay Class: High Sensitivity DNA Assay
 Data Path: C:\...ents and Settings\Bioanalyzer\2013-07-03\2013-07-03_001.xad

Created: 7/3/2013 10:34:26 AM
 Modified: 7/3/2013 11:18:52 AM

Electropherogram Summary



Overall Results for Ladder

Noise: 0.1

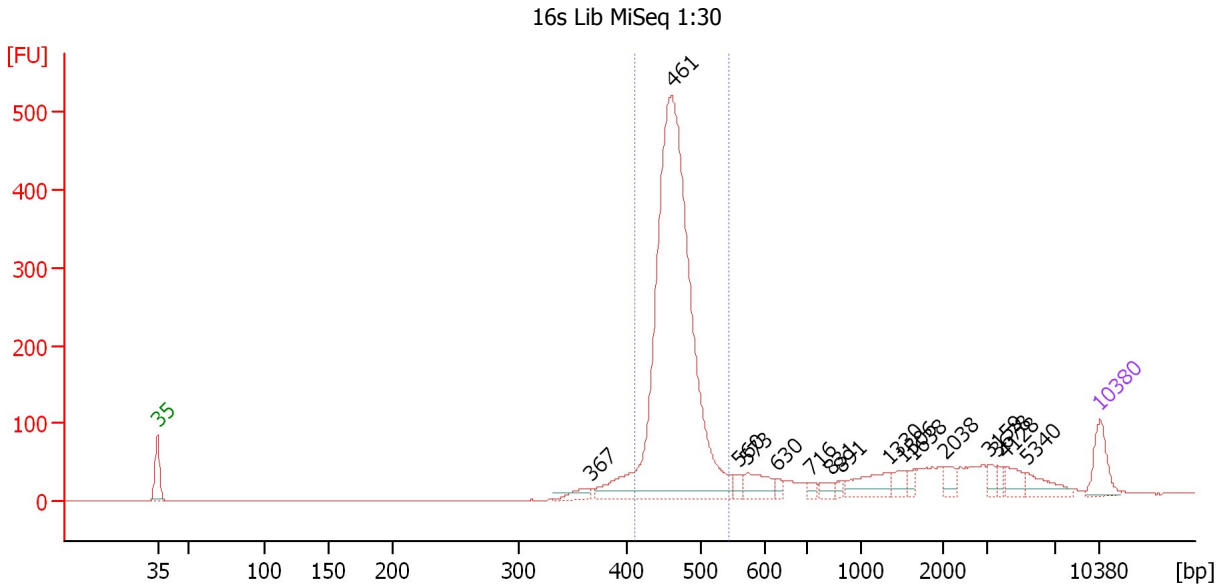
Peak table for Ladder

Peak	Size [bp]	Conc. [pg/μl]	Molarity [pmol/l]	Observations
1	35	125.00	5,411.3	Lower Marker
2	50	150.00	4,545.5	Ladder Peak
3	100	150.00	2,272.7	Ladder Peak
4	150	150.00	1,515.2	Ladder Peak
5	200	150.00	1,136.4	Ladder Peak
6	300	150.00	757.6	Ladder Peak
7	400	150.00	568.2	Ladder Peak
8	500	150.00	454.5	Ladder Peak
9	600	150.00	378.8	Ladder Peak
10	700	150.00	324.7	Ladder Peak
11	1,000	150.00	227.3	Ladder Peak
12	2,000	150.00	113.6	Ladder Peak
13	3,000	150.00	75.8	Ladder Peak
14	6,761	0.00	0.0	excluded peak
15	7,000	150.00	32.5	Ladder Peak
16	10,380	75.00	10.9	Upper Marker

Assay Class: High Sensitivity DNA Assay
 Data Path: C:\...ents and Settings\Bioanalyzer\2013-07-03\2013-07-03_001.xad

Created: 7/3/2013 10:34:26 AM
 Modified: 7/3/2013 11:18:52 AM

Electropherogram Summary Continued ...



Setpoint Deviations for sample 1 : 16s Lib MiSeq 1:30

Height Threshold [FU] : 10

Overall Results for sample 1 : 16s Lib MiSeq 1:30

Number of peaks found: 16 Corr. Area 1: 1,918.2
 Noise: 0.1

Peak table for sample 1 : 16s Lib MiSeq 1:30

Peak	Size [bp]	Conc. [pg/µl]	Molarity [pmol/l]	Observations
1	35	125.00	5,411.3	Lower Marker
2	367	38.74	159.9	
3	461	2,136.38	7,016.2	
4	560	25.94	70.2	
5	573	78.53	207.8	
6	630	16.98	40.9	
7	716	15.03	31.8	
8	831	23.25	42.4	
9	891	15.06	25.6	
10	1,330	82.07	93.5	
11	1,506	34.49	34.7	
12	1,638	18.34	17.0	
13	2,038	33.37	24.8	
14	3,159	21.80	10.5	
15	3,678	17.23	7.1	
16	4,128	37.66	13.8	
17	5,340	51.02	14.5	
18	10,380	75.00	10.9	Upper Marker

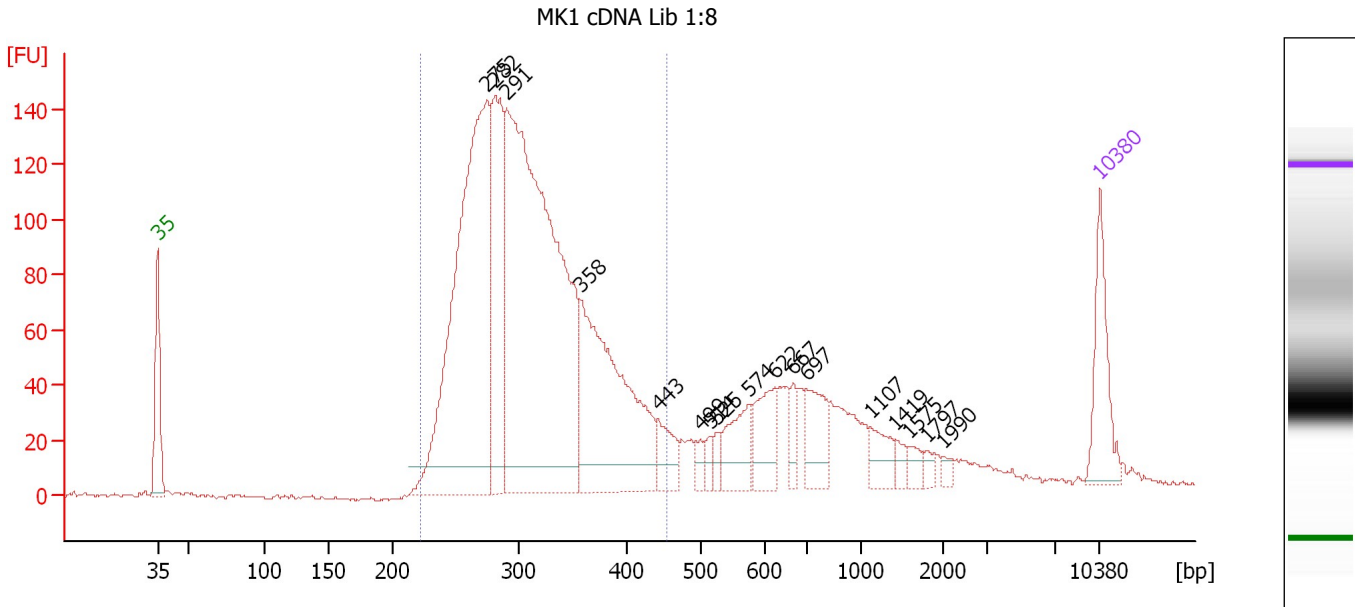
Region table for sample 1 : 16s Lib MiSeq 1:30

From [bp]	To [bp]	Average Size [bp]	Molarity [pmol/l]	Conc. [pg/µl]	Corr. Area	% of Total	Size distribution in CV [%]	Color
411	544	466	6,528.0	2,005.73	1,918.2	68	4.9	Blue

Assay Class: High Sensitivity DNA Assay
 Data Path: C:\...ents and Settings\Bioanalyzer\2013-07-03\2013-07-03_001.xad

Created: 7/3/2013 10:34:26 AM
 Modified: 7/3/2013 11:18:52 AM

Electropherogram Summary Continued ...



Setpoint Deviations for sample 2 : MK1 cDNA Lib 1:8

Height Threshold [FU] : 10

Overall Results for sample 2 : MK1 cDNA Lib 1:8

Number of peaks found: 17 Corr. Area 1: 2,083.5
 Noise: 0.6

Peak table for sample 2 : MK1 cDNA Lib 1:8

Peak	Size [bp]	Conc. [pg/μl]	Molarity [pmol/l]	Observations
1	35	125.00	5,411.3	Lower Marker
2	275	768.68	4,229.3	
3	282	259.60	1,396.2	
4	291	1,054.00	5,488.1	
5	358	395.44	1,674.9	
6	443	49.51	169.2	
7	499	15.81	48.0	
8	514	14.11	41.6	
9	525	15.11	43.6	
10	574	68.30	180.3	
11	622	68.94	167.8	
12	667	24.60	55.9	
13	697	68.50	148.8	
14	1,107	33.81	46.3	
15	1,419	12.64	13.5	
16	1,575	13.24	12.7	
17	1,797	8.03	6.8	
18	1,990	7.19	5.5	
19	10,380	75.00	10.9	Upper Marker

Assay Class: High Sensitivity DNA Assay
Data Path: C:\...ents and Settings\Bioanalyzer\2013-07-03\2013-07-03_001.xad

Created: 7/3/2013 10:34:26 AM
Modified: 7/3/2013 11:18:52 AM

Electropherogram Summary Continued ...

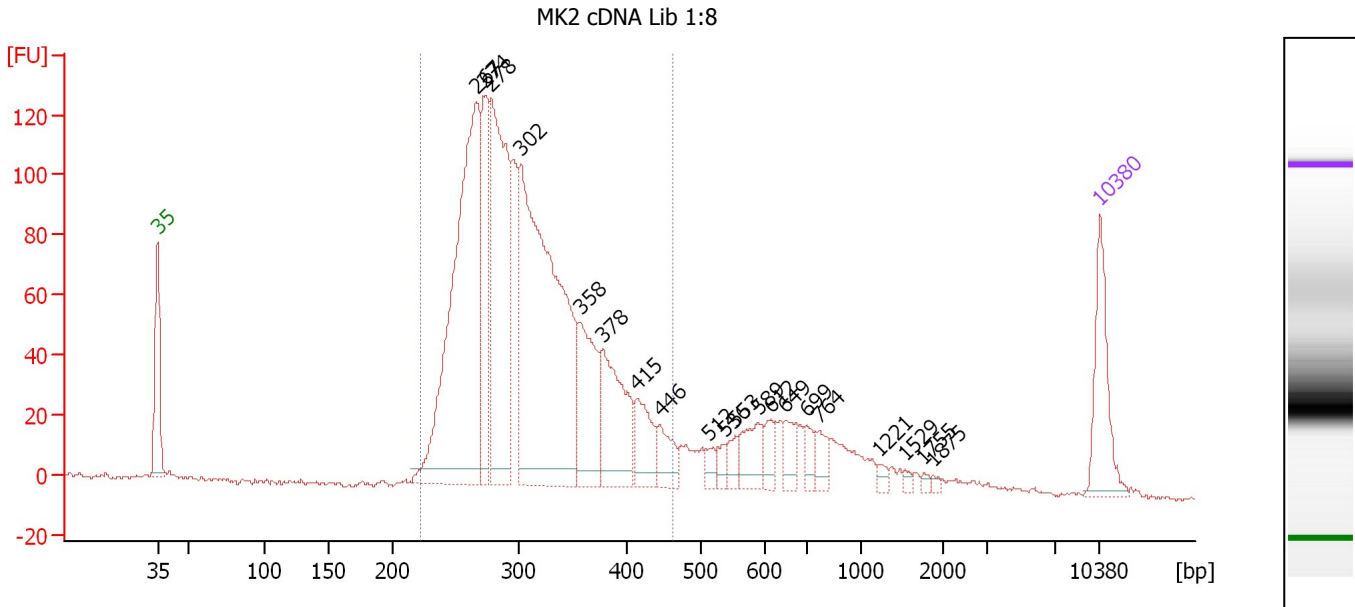
... Region table for sample 2 : MK1 cDNA Lib 1:8

From [bp]	To [bp]	Average Size [bp]	Molarity [pmol/l]	Conc. [pg/μl]	Corr. Area	% of Total	Size distribution in CV [%]	Color
221	456	312	12,186.7	2,433.80	2,083.5	77	15.9	■

Assay Class: High Sensitivity DNA Assay
 Data Path: C:\...ents and Settings\Bioanalyzer\2013-07-03\2013-07-03_001.xad

Created: 7/3/2013 10:34:26 AM
 Modified: 7/3/2013 11:18:52 AM

Electropherogram Summary Continued ...



Overall Results for sample 3 : MK2 cDNA Lib 1:8

Number of peaks found: 20 Corr. Area 1: 1,767.1
 Noise: 0.9

Peak table for sample 3 : MK2 cDNA Lib 1:8

Peak	Size [bp]	Conc. [pg/μl]	Molarity [pmol/l]	Observations
1	35	125.00	5,411.3	Lower Marker
2	267	614.95	3,490.0	
3	274	159.42	881.9	
4	278	377.83	2,056.7	
5	302	674.79	3,381.2	
6	358	139.70	591.7	
7	378	151.63	607.4	
8	415	64.51	235.8	
9	446	40.34	137.2	
10	512	14.56	43.1	
11	536	13.30	37.6	
12	553	20.09	55.0	
13	589	46.72	120.2	
14	612	25.77	63.8	
15	649	27.08	63.2	
16	699	21.43	46.5	
17	764	21.90	43.4	
18	1,221	7.27	9.0	
19	1,529	4.22	4.2	
20	1,755	3.74	3.2	
21	1,875	4.08	3.3	
22	10,380	75.00	10.9	Upper Marker

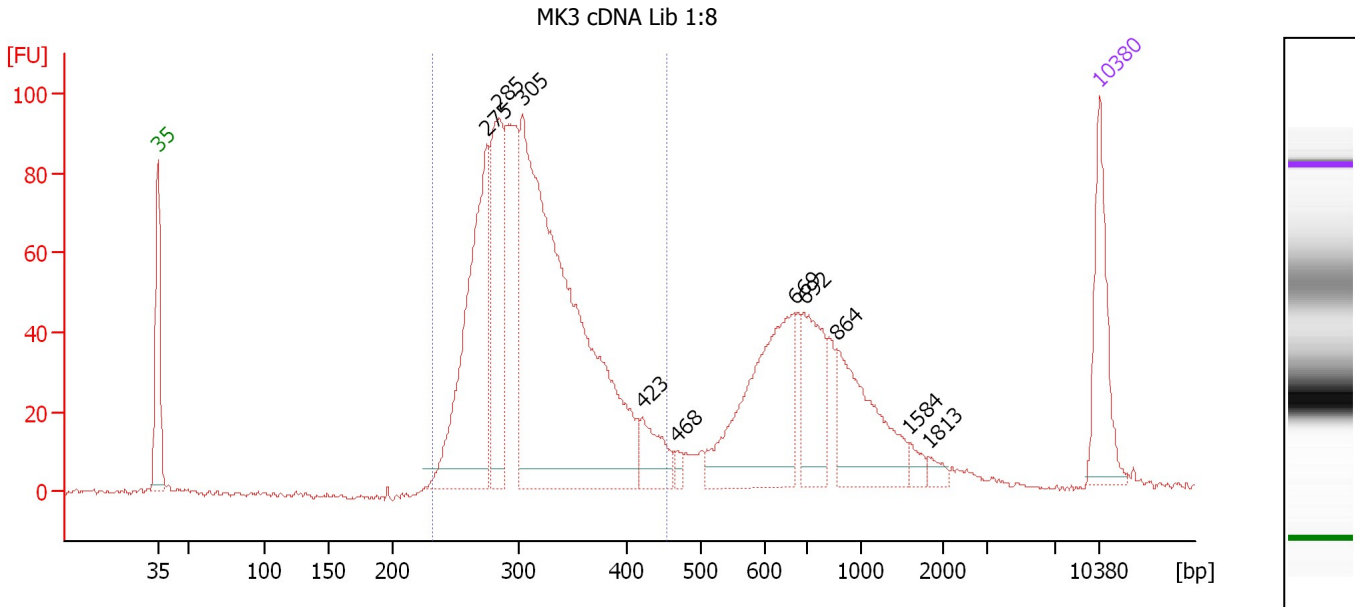
Region table for sample 3 : MK2 cDNA Lib 1:8

From [bp]	To [bp]	Average Size [bp]	Molarity [pmol/l]	Conc. [pg/μl]	Corr. Area	% of Total	Size distribution in CV [%]	Color
222	464	311	11,691.1	2,318.52	1,767.1	83	16.6	Blue

Assay Class: High Sensitivity DNA Assay
 Data Path: C:\...ents and Settings\Bioanalyzer\2013-07-03\2013-07-03_001.xad

Created: 7/3/2013 10:34:26 AM
 Modified: 7/3/2013 11:18:52 AM

Electropherogram Summary Continued ...



Overall Results for sample 4 : MK3 cDNA Lib 1:8

Number of peaks found: 10 Corr. Area 1: 1,192.1
 Noise: 0.5

Peak table for sample 4 : MK3 cDNA Lib 1:8

Peak	Size [bp]	Conc. [pg/μl]	Molarity [pmol/l]	Observations
1	35	125.00	5,411.3	Lower Marker
2	275	329.75	1,817.5	
3	285	198.50	1,055.5	
4	305	789.93	3,929.1	
5	423	48.78	174.9	
6	468	8.44	27.3	
7	669	211.61	479.6	
8	692	92.21	201.8	
9	864	124.78	218.7	
10	1,584	10.58	10.1	
11	1,813	8.31	6.9	
12	10,380	75.00	10.9	Upper Marker

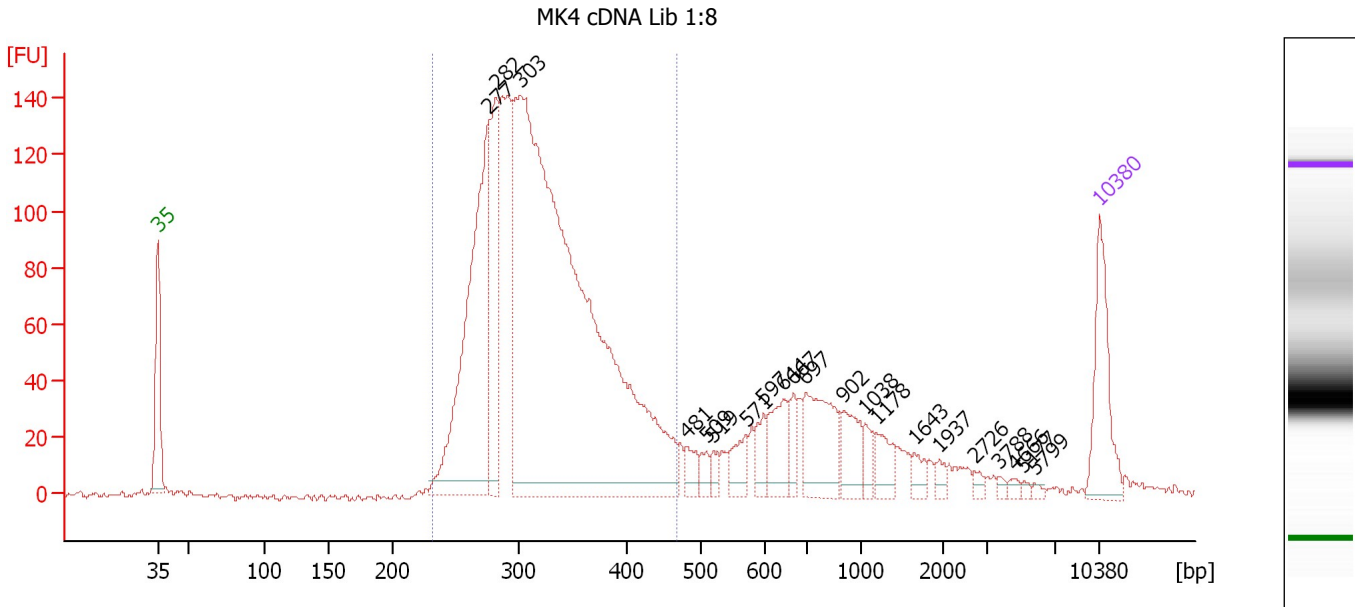
Region table for sample 4 : MK3 cDNA Lib 1:8

From [bp]	To [bp]	Average Size [bp]	Molarity [pmol/l]	Conc. [pg/μl]	Corr. Area	% of Total	Size distribution in CV [%]	Color
232	455	316	7,339.4	1,494.71	1,192.1	69	14.4	Blue

Assay Class: High Sensitivity DNA Assay
 Data Path: C:\...ents and Settings\Bioanalyzer\2013-07-03\2013-07-03_001.xad

Created: 7/3/2013 10:34:26 AM
 Modified: 7/3/2013 11:18:52 AM

Electropherogram Summary Continued ...



Overall Results for sample 5 : MK4 cDNA Lib 1:8

Number of peaks found: 21 Corr. Area 1: 1,921.0
 Noise: 1.1

Peak table for sample 5 : MK4 cDNA Lib 1:8

Peak	Size [bp]	Conc. [pg/μl]	Molarity [pmol/l]	Observations
1	35	125.00	5,411.3	Lower Marker
2	277	430.63	2,357.4	
3	282	169.94	911.9	
4	303	1,428.02	7,150.8	
5	481	22.29	70.2	
6	509	15.00	44.6	
7	519	11.49	33.5	
8	571	30.57	81.2	
9	597	24.28	61.6	
10	644	54.74	128.7	
11	667	23.16	52.6	
12	697	101.68	221.0	
13	902	46.30	77.8	
14	1,038	16.69	24.4	
15	1,178	28.30	36.4	
16	1,643	13.56	12.5	
17	1,937	8.12	6.3	
18	2,726	5.93	3.3	
19	3,788	3.99	1.6	
20	4,666	5.02	1.6	
21	5,177	3.17	0.9	
22	5,799	3.20	0.8	
23	10,380	75.00	10.9	Upper Marker

Assay Class: High Sensitivity DNA Assay
Data Path: C:\...ents and Settings\Bioanalyzer\2013-07-03\2013-07-03_001.xad

Created: 7/3/2013 10:34:26 AM
Modified: 7/3/2013 11:18:52 AM

Electropherogram Summary Continued ...

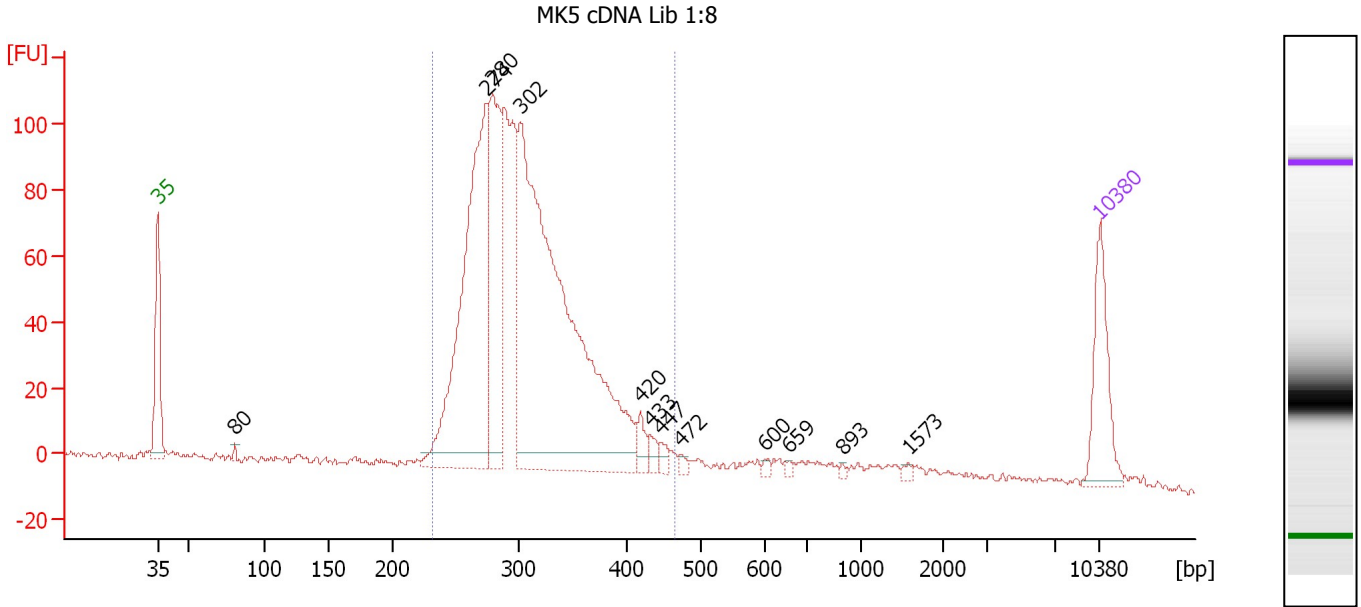
... Region table for sample 5 : MK4 cDNA Lib 1:8

From [bp]	To [bp]	Average Size [bp]	Molarity [pmol/l]	Conc. [pg/μl]	Corr. Area	% of Total	Size distribution in CV [%]	Color
232	467	322	10,337.6	2,134.52	1,921.0	77	15.2	■

Assay Class: High Sensitivity DNA Assay
 Data Path: C:\...ents and Settings\Bioanalyzer\2013-07-03\2013-07-03_001.xad

Created: 7/3/2013 10:34:26 AM
 Modified: 7/3/2013 11:18:52 AM

Electropherogram Summary Continued ...



Overall Results for sample 6 : MK5 cDNA Lib 1:8

Number of peaks found: 12 Corr. Area 1: 1,348.2
 Noise: 1.1

Peak table for sample 6 : MK5 cDNA Lib 1:8

Peak	Size [bp]	Conc. [pg/μl]	Molarity [pmol/l]	Observations
1	35	125.00	5,411.3	Lower Marker
2	80	5.47	103.3	
3	274	517.97	2,859.3	
4	280	239.81	1,299.5	
5	302	882.57	4,429.4	
6	420	21.16	76.4	
7	433	11.11	38.9	
8	447	10.38	35.2	
9	472	5.74	18.4	
10	600	4.70	11.9	
11	659	4.48	10.3	
12	893	2.93	5.0	
13	1,573	4.13	4.0	
14	10,380	75.00	10.9	Upper Marker

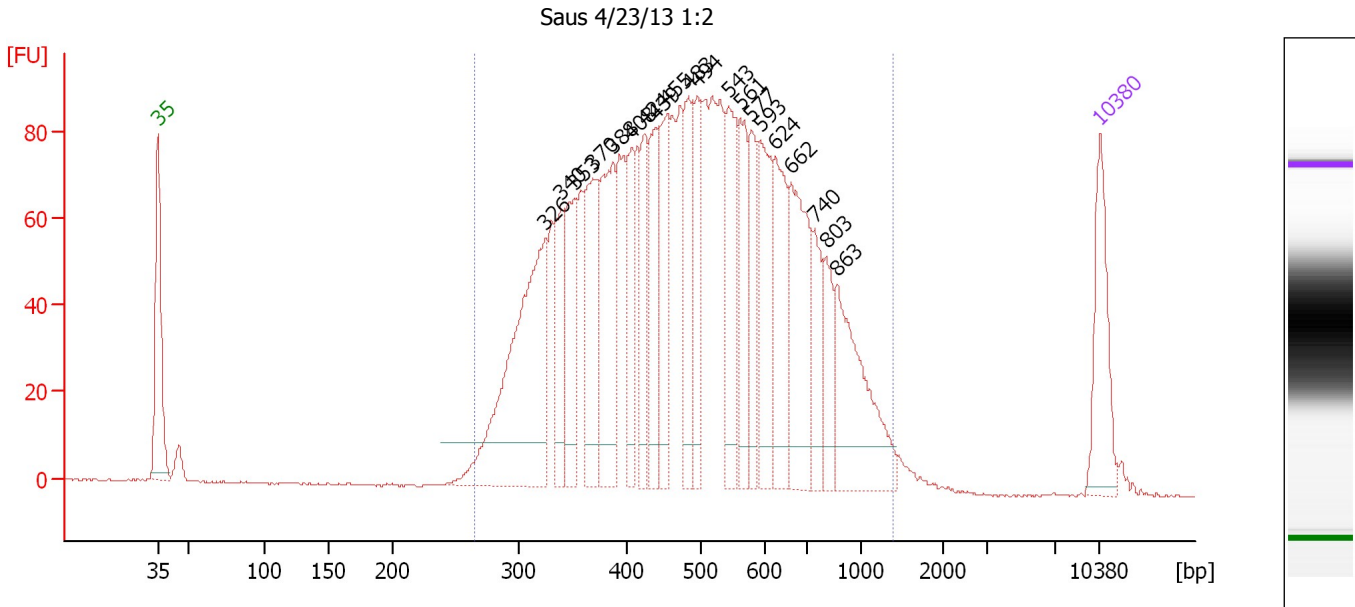
Region table for sample 6 : MK5 cDNA Lib 1:8

From [bp]	To [bp]	Average Size [bp]	Molarity [pmol/l]	Conc. [pg/μl]	Corr. Area	% of Total	Size distribution in CV [%]	Color
232	466	310	9,415.3	1,877.29	1,348.2	89	14.6	Blue

Assay Class: High Sensitivity DNA Assay
 Data Path: C:\...ents and Settings\Bioanalyzer\2013-07-03\2013-07-03_001.xad

Created: 7/3/2013 10:34:26 AM
 Modified: 7/3/2013 11:18:52 AM

Electropherogram Summary Continued ...



Setpoint Deviations for sample 7 : Saus 4/23/13 1:2

Height Threshold [FU] : 10

Overall Results for sample 7 : Saus 4/23/13 1:2

Number of peaks found: 20 Corr. Area 1: 2,377.7
 Noise: 0.2

Peak table for sample 7 : Saus 4/23/13 1:2

Peak	Size [bp]	Conc. [pg/µl]	Molarity [pmol/l]	Observations
1	35	125.00	5,411.3	Lower Marker
2	326	346.37	1,612.2	
3	340	92.57	412.0	
4	353	105.57	453.2	
5	370	133.09	545.5	
6	388	162.20	633.2	
7	408	80.46	298.9	
8	424	88.56	316.4	
9	439	96.03	331.1	
10	455	98.28	327.4	
11	483	94.47	296.4	
12	494	87.41	268.0	
13	543	115.08	320.9	
14	561	74.07	199.9	
15	577	70.46	184.9	
16	593	111.77	285.8	
17	624	109.02	264.8	
18	662	158.14	361.9	
19	740	64.85	132.9	
20	803	52.84	99.7	
21	863	152.95	268.4	
22	10,380	75.00	10.9	Upper Marker

Assay Class: High Sensitivity DNA Assay
Data Path: C:\...ents and Settings\Bioanalyzer\2013-07-03\2013-07-03_001.xad

Created: 7/3/2013 10:34:26 AM
Modified: 7/3/2013 11:18:52 AM

Electropherogram Summary Continued ...

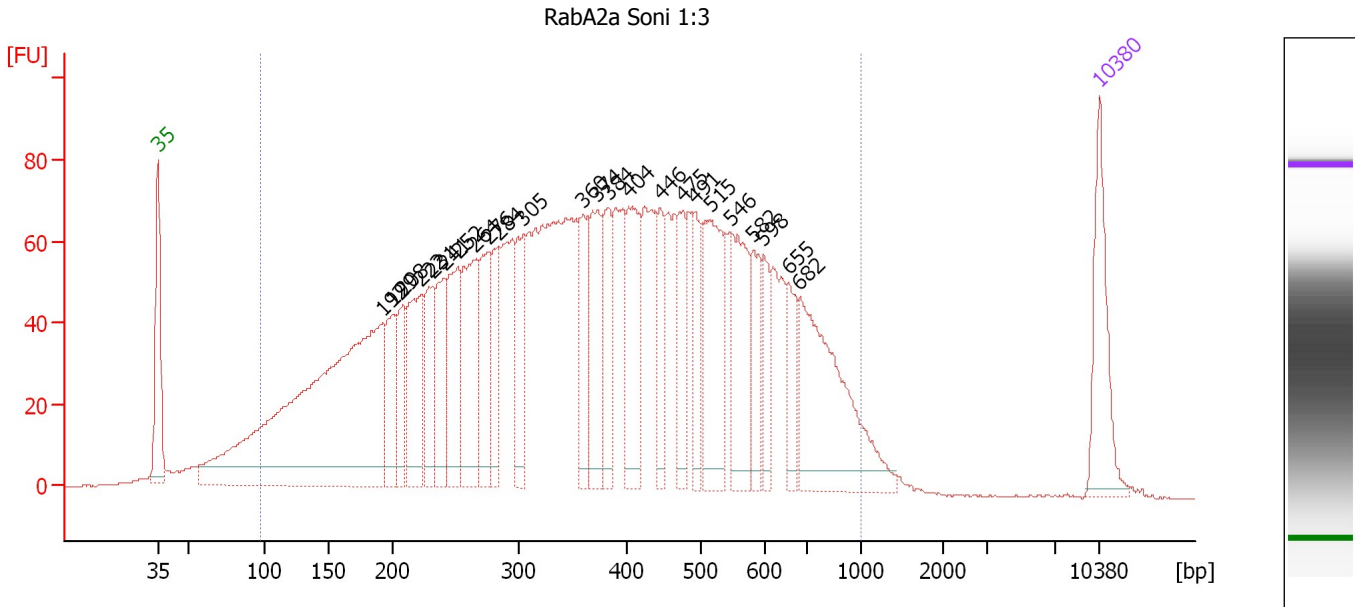
... Region table for sample 7 : Saus 4/23/13 1:2

From [bp]	To [bp]	Average Size [bp]	Molarity [pmol/l]	Conc. [pg/μl]	Corr. Area	% of Total	Size distribution in CV [%]	Color
265	1,380	518	10,171.2	3,027.28	2,377.7	98	35.1	■

Assay Class: High Sensitivity DNA Assay
 Data Path: C:\...ents and Settings\Bioanalyzer\2013-07-03\2013-07-03_001.xad

Created: 7/3/2013 10:34:26 AM
 Modified: 7/3/2013 11:18:52 AM

Electropherogram Summary Continued ...



Overall Results for sample 8 : RabA2a Soni 1:3

Number of peaks found: 24 Corr. Area 1: 3,178.2
 Noise: 0.1

Peak table for sample 8 : RabA2a Soni 1:3

Peak	Size [bp]	Conc. [pg/μl]	Molarity [pmol/l]	Observations
1	35	125.00	5,411.3	Lower Marker
2	192	709.57	5,613.7	
3	199	85.96	654.0	
4	208	68.40	498.2	
5	222	124.38	848.5	
6	231	76.93	504.6	
7	241	88.47	556.4	
8	252	111.07	668.1	
9	264	138.54	793.8	
10	276	86.29	472.9	
11	284	70.35	374.9	
12	305	86.66	430.8	
13	360	67.06	282.1	
14	374	106.42	431.7	
15	384	79.91	315.5	
16	404	111.23	416.8	
17	446	60.45	205.4	
18	475	68.00	216.8	
19	491	57.54	177.6	
20	515	145.96	429.8	
21	546	115.72	321.1	
22	582	57.24	149.1	
23	598	44.40	112.5	
24	655	44.68	103.3	
25	682	214.05	475.7	
26	10,380	75.00	10.9	Upper Marker

Assay Class: High Sensitivity DNA Assay
Data Path: C:\...ents and Settings\Bioanalyzer\2013-07-03\2013-07-03_001.xad

Created: 7/3/2013 10:34:26 AM
Modified: 7/3/2013 11:18:52 AM

Electropherogram Summary Continued ...

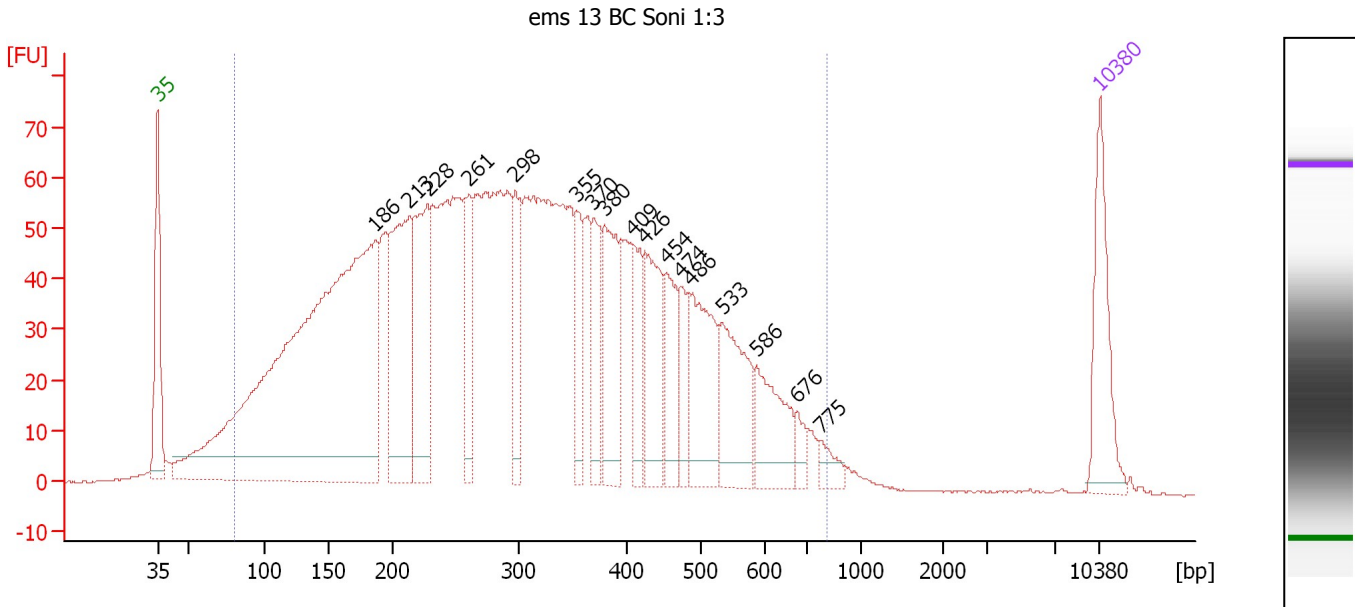
... Region table for sample 8 : RabA2a Soni 1:3

From [bp]	To [bp]	Average Size [bp]	Molarity [pmol/l]	Conc. [pg/μl]	Corr. Area	% of Total	Size distribution in CV [%]	Color
97	1,000	396	21,473.4	3,932.64	3,178.2	95	45.1	■

Assay Class: High Sensitivity DNA Assay
 Data Path: C:\...ents and Settings\Bioanalyzer\2013-07-03\2013-07-03_001.xad

Created: 7/3/2013 10:34:26 AM
 Modified: 7/3/2013 11:18:52 AM

Electropherogram Summary Continued ...



Overall Results for sample 9 : ems 13 BC Soni 1:3

Number of peaks found: 17 Corr. Area 1: 2,678.0
 Noise: 0.2

Peak table for sample 9 : ems 13 BC Soni 1:3

Peak	Size [bp]	Conc. [pg/µl]	Molarity [pmol/l]	Observations
1	35	125.00	5,411.3	Lower Marker
2	186	1,091.75	8,908.2	
3	213	244.32	1,740.7	
4	228	184.38	1,225.6	
5	261	86.60	502.5	
6	298	79.57	404.6	
7	355	65.44	279.5	
8	370	70.70	289.5	
9	380	124.01	494.9	
10	409	63.19	234.0	
11	426	106.41	378.7	
12	454	73.13	244.3	
13	474	46.88	150.0	
14	486	122.91	383.3	
15	533	112.91	320.7	
16	586	82.39	213.2	
17	676	18.49	41.4	
18	775	18.32	35.8	
19	10,380	75.00	10.9	Upper Marker

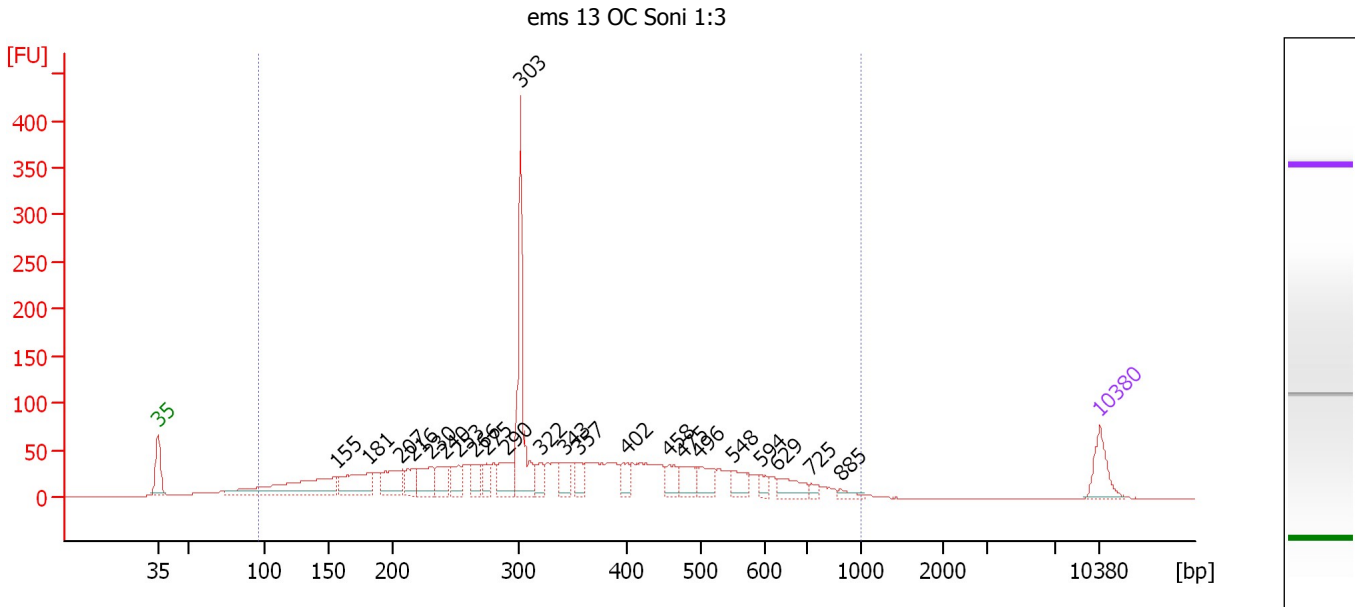
Region table for sample 9 : ems 13 BC Soni 1:3

From [bp]	To [bp]	Average Size [bp]	Molarity [pmol/l]	Conc. [pg/µl]	Corr. Area	% of Total	Size distribution in CV [%]	Color
81	811	318	28,157.4	4,196.69	2,678.0	95	44.3	Blue

Assay Class: High Sensitivity DNA Assay
 Data Path: C:\...ents and Settings\Bioanalyzer\2013-07-03\2013-07-03_001.xad

Created: 7/3/2013 10:34:26 AM
 Modified: 7/3/2013 11:18:52 AM

Electropherogram Summary Continued ...



Overall Results for sample 10 : ems 13 OC Soni 1:3

Number of peaks found: 23 Corr. Area 1: 1,933.1
 Noise: 0.1

Peak table for sample 10 : ems 13 OC Soni 1:3

Peak	Size [bp]	Conc. [pg/μl]	Molarity [pmol/l]	Observations
1	35	125.00	5,411.3	Lower Marker
2	155	328.54	3,215.2	
3	181	179.79	1,504.3	
4	207	127.67	936.7	
5	216	71.21	500.6	
6	230	104.01	685.7	
7	240	85.86	541.1	
8	253	68.98	413.7	
9	266	62.09	353.9	
10	275	53.35	294.1	
11	290	116.89	610.2	
12	303	369.25	1,847.7	
13	322	52.71	248.2	
14	343	66.70	294.5	
15	357	46.93	199.4	
16	402	51.38	193.8	
17	458	57.57	190.5	
18	475	72.68	231.7	
19	496	73.35	223.9	
20	548	62.86	173.7	
21	594	25.70	65.6	
22	629	66.18	159.3	
23	725	14.35	30.0	
24	885	17.04	29.2	
25	10,380	75.00	10.9	Upper Marker

Assay Class: High Sensitivity DNA Assay
Data Path: C:\...ents and Settings\Bioanalyzer\2013-07-03\2013-07-03_001.xad

Created: 7/3/2013 10:34:26 AM
Modified: 7/3/2013 11:18:52 AM

Electropherogram Summary Continued ...

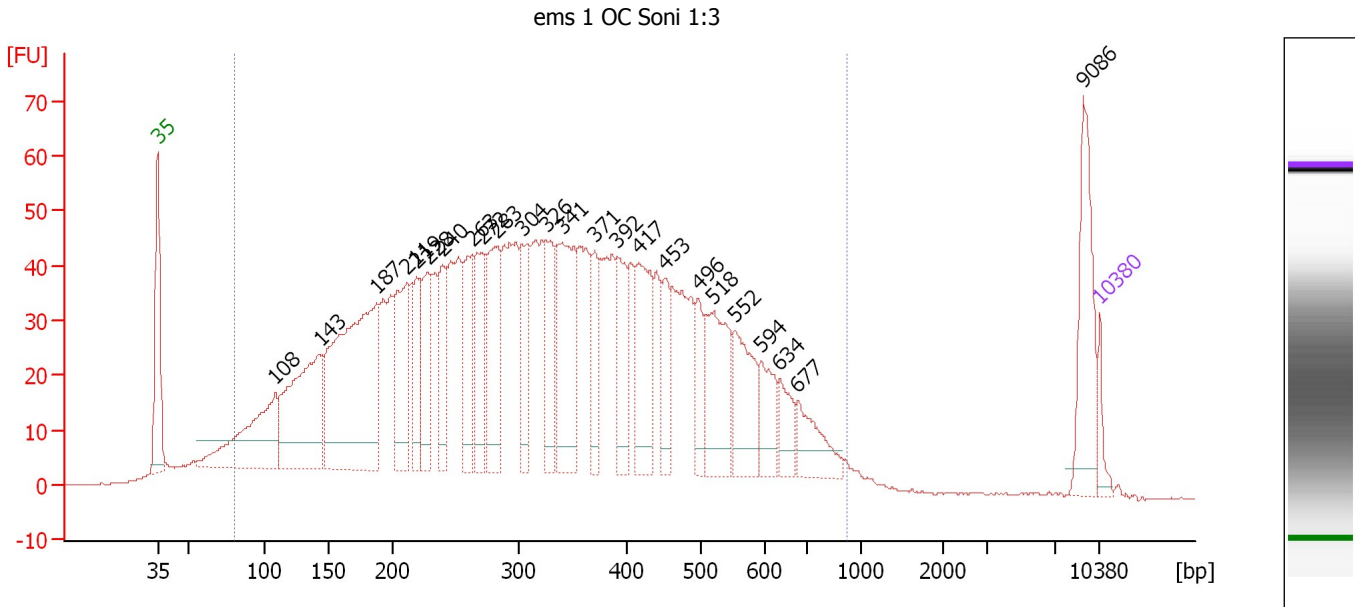
... Region table for sample 10 : ems 13 OC Soni 1:3

From [bp]	To [bp]	Average Size [bp]	Molarity [pmol/l]	Conc. [pg/μl]	Corr. Area	% of Total	Size distribution in CV [%]	Color
96	1,000	358	18,048.6	3,107.23	1,933.1	94	44.4	■

Assay Class: High Sensitivity DNA Assay
 Data Path: C:\...ents and Settings\Bioanalyzer\2013-07-03\2013-07-03_001.xad

Created: 7/3/2013 10:34:26 AM
 Modified: 7/3/2013 11:18:52 AM

Electropherogram Summary Continued ...



Overall Results for sample 11 : ems 1 OC Soni 1:3

Number of peaks found: 24 Corr. Area 1: 2,076.4
 Noise: 0.1

Peak table for sample 11 : ems 1 OC Soni 1:3

Peak	Size [bp]	Conc. [pg/µl]	Molarity [pmol/l]	Observations
1	35	125.00	5,411.3	Lower Marker
2	108	878.38	12,306.8	
3	143	1,127.42	11,980.4	
4	187	1,825.38	14,790.9	
5	211	563.76	4,041.9	
6	219	344.17	2,384.5	
7	228	423.21	2,817.0	
8	240	346.43	2,189.6	
9	263	398.61	2,297.7	
10	272	396.35	2,209.5	
11	283	525.54	2,815.3	
12	304	332.38	1,657.4	
13	326	367.60	1,706.9	
14	341	722.67	3,212.3	
15	371	272.72	1,113.2	
16	392	329.74	1,273.1	
17	417	493.80	1,794.3	
18	453	233.31	781.0	
19	496	198.18	605.3	
20	518	505.92	1,480.1	
21	552	376.51	1,034.1	
22	594	215.03	548.9	
23	634	160.76	384.4	
24	677	233.77	523.0	
25	9,086	410.20	68.4	
26	10,380	75.00	10.9	Upper Marker

Assay Class: High Sensitivity DNA Assay
Data Path: C:\...ents and Settings\Bioanalyzer\2013-07-03\2013-07-03_001.xad

Created: 7/3/2013 10:34:26 AM
Modified: 7/3/2013 11:18:52 AM

Electropherogram Summary Continued ...

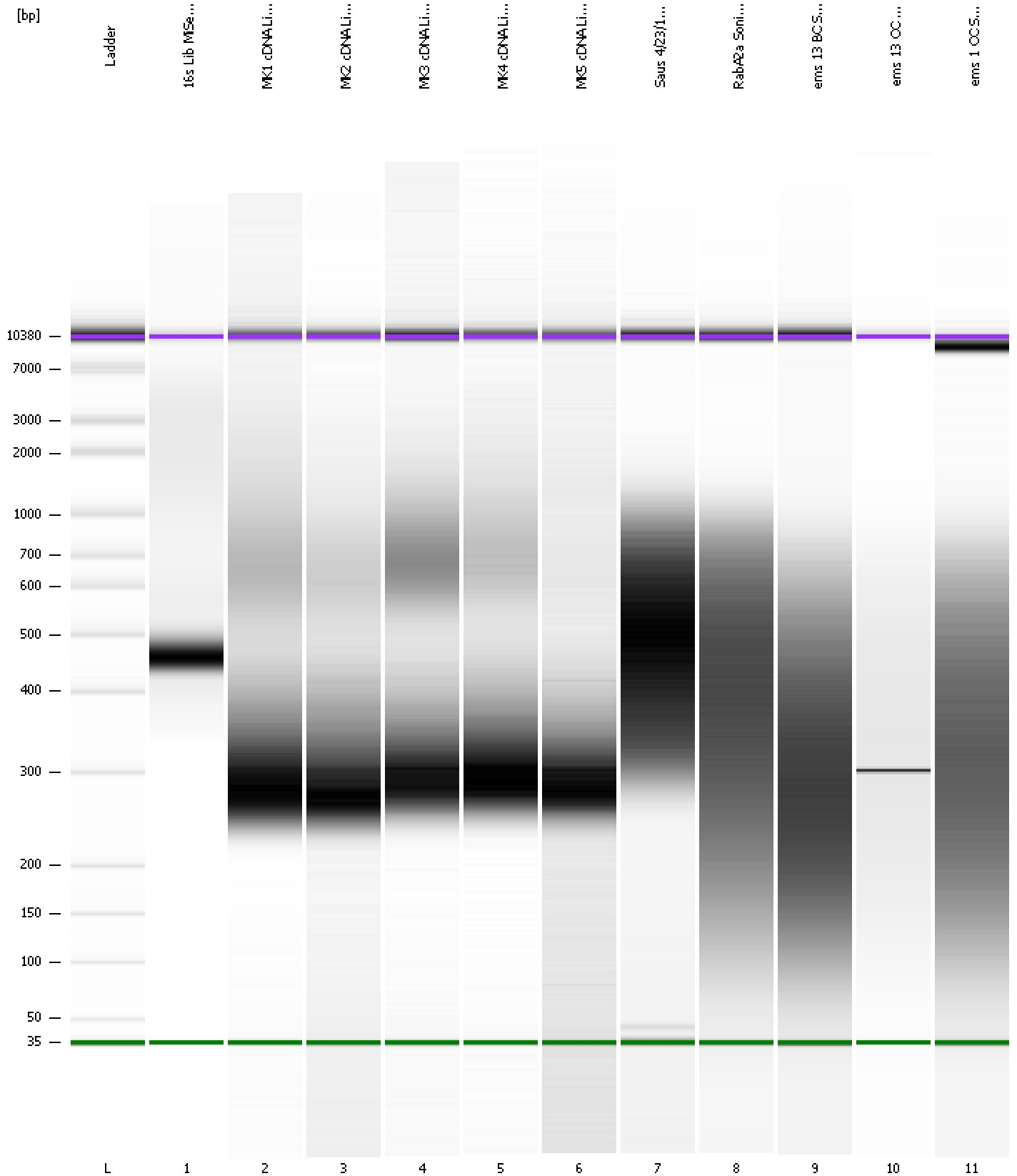
... Region table for sample 11 : ems 1 OC Soni 1:3

From [bp]	To [bp]	Average Size [bp]	Molarity [pmol/l]	Conc. [pg/μl]	Corr. Area	% of Total	Size distribution in CV [%]	Color
81	922	341	117,819.5	18,588.76	2,076.4	93	44.8	■

Assay Class: High Sensitivity DNA Assay
Data Path: C:\...ents and Settings\Bioanalyzer\2013-07-03\2013-07-03_001.xad

Created: 7/3/2013 10:34:26 AM
Modified: 7/3/2013 11:18:52 AM

Gel Image

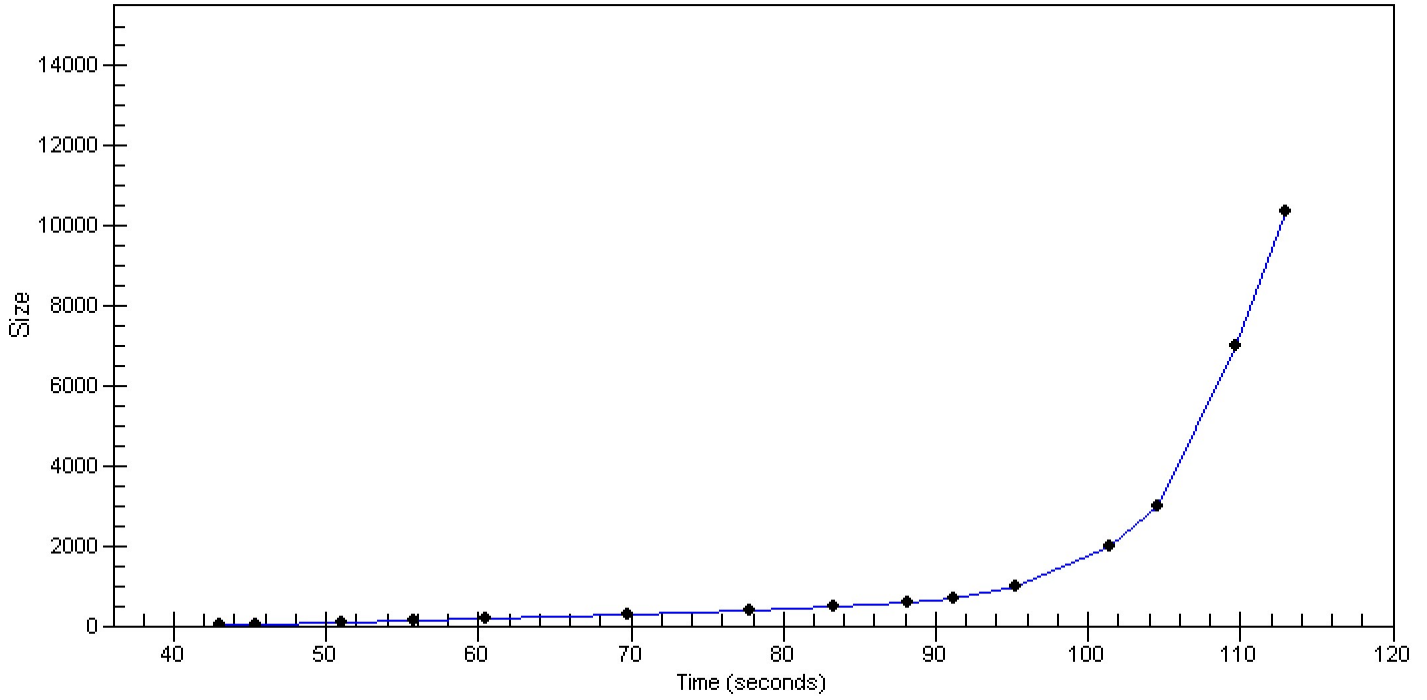


Assay Class: High Sensitivity DNA Assay
Data Path: C:\...ents and Settings\Bioanalyzer\2013-07-03\2013-07-03_001.xad

Created: 7/3/2013 10:34:26 AM
Modified: 7/3/2013 11:18:52 AM

Curves

Standard Curve



Assay Class: High Sensitivity DNA Assay
 Data Path: C:\...ents and Settings\Bioanalyzer\2013-07-03\2013-07-03_001.xad

Created: 7/3/2013 10:34:26 AM
 Modified: 7/3/2013 11:18:52 AM

Run Logbook

Description	Number	Source	Category	Sub Category	Time	Time Zone	User	Host
Run ended on port 1 (Number of wells acquired: 12)		Instrument	Run		7/3/2013 11:14:55 AM	(GMT --07:00) Pacific Standard Time	UC Davis	D8XSMGH1
Run started on port 1 (File: C:\Documents and Settings\Bioanalyzer\2013-07-03\2013-07-03_001.xad)		Instrument	Run		7/3/2013 10:34:32 AM	(GMT --07:00) Pacific Standard Time	UC Davis	D8XSMGH1
Product Number : G2938B		Instrument	Run		7/3/2013 10:34:32 AM	(GMT --07:00) Pacific Standard Time	UC Davis	D8XSMGH1
Name :		Instrument	Run		7/3/2013 10:34:32 AM	(GMT --07:00) Pacific Standard Time	UC Davis	D8XSMGH1
Vendor : Agilent Technologies		Instrument	Run		7/3/2013 10:34:32 AM	(GMT --07:00) Pacific Standard Time	UC Davis	D8XSMGH1
Serial# : DE13701086		Instrument	Run		7/3/2013 10:34:32 AM	(GMT --07:00) Pacific Standard Time	UC Davis	D8XSMGH1
Firmware : C.01.069		Instrument	Run		7/3/2013 10:34:32 AM	(GMT --07:00) Pacific Standard Time	UC Davis	D8XSMGH1
Cartridge : Electrode		Instrument	Run		7/3/2013 10:34:32 AM	(GMT --07:00) Pacific Standard Time	UC Davis	D8XSMGH1