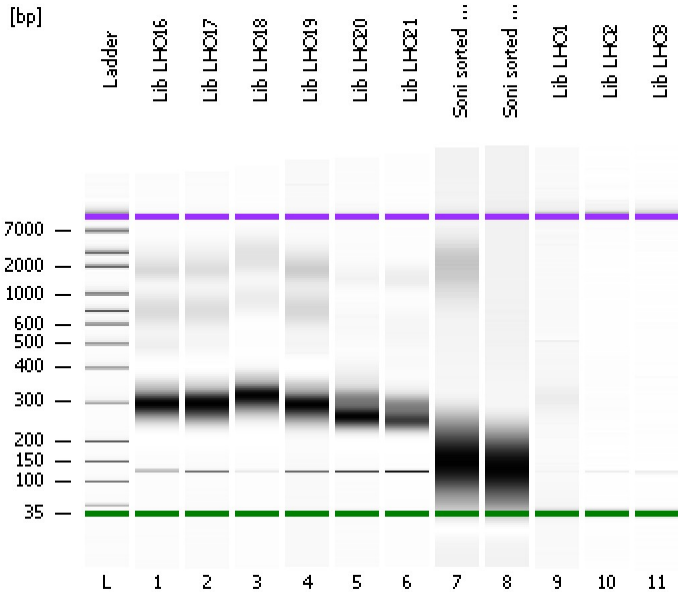


Assay Class: High Sensitivity DNA Assay
Data Path: C:\...ents and Settings\Bioanalyzer\2013-07-08\2013-07-08_005.xad

Created: 7/8/2013 1:11:39 PM
Modified: 7/8/2013 3:35:35 PM

Electrophoresis File Run Summary



Instrument Information:

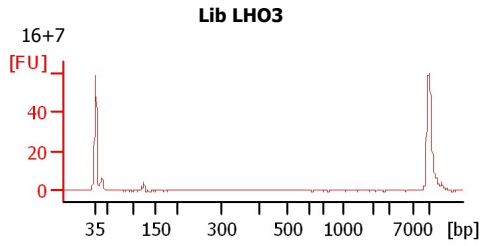
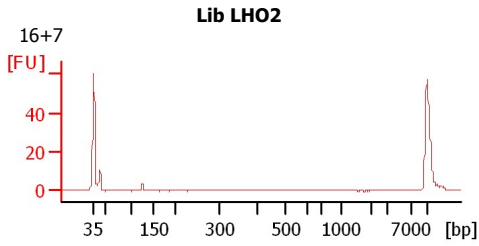
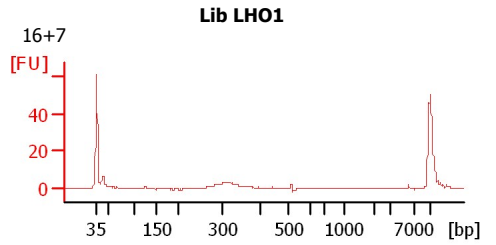
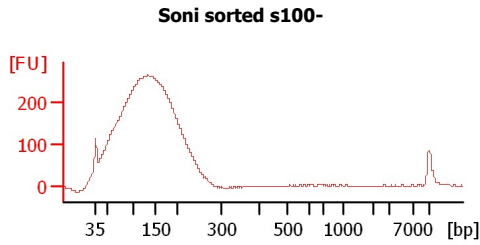
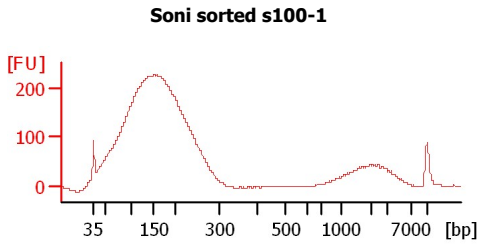
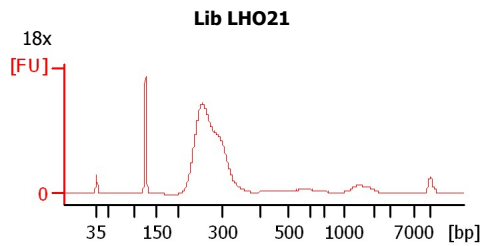
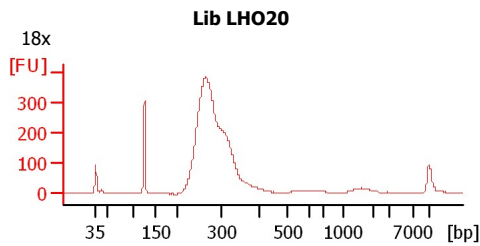
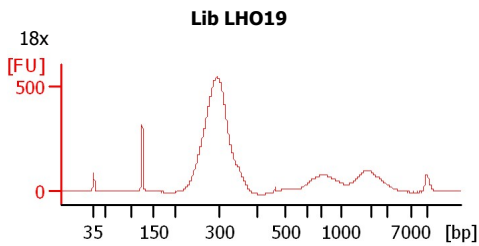
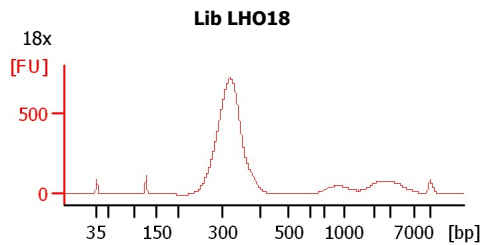
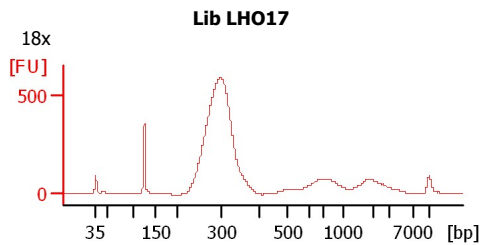
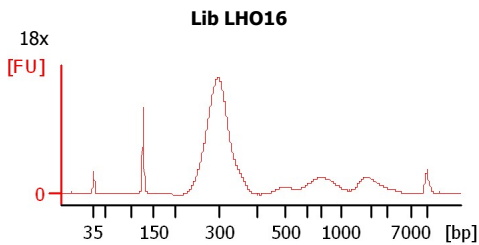
Instrument Name: DE13701086 Firmware: C.01.069
Serial#: DE13701086 Type: G2938B

Assay Information:

Assay Origin Path: C:\Program Files\Agilent\2100 bioanalyzer\2100 expert\assays\dsDNA\High Sensitivity DNA.xsy
Assay Class: High Sensitivity DNA Assay
Version: 1.03
Assay Comments: Copyright © 2003-2010 Agilent Technologies

Chip Information:

Chip Lot #:
Reagent Kit Lot #:
Chip Comments:



Assay Class: High Sensitivity DNA Assay
Data Path: C:\...ents and Settings\Bioanalyzer\2013-07-08\2013-07-08_005.xad

Created: 7/8/2013 1:11:39 PM
Modified: 7/8/2013 3:35:35 PM

Electrophoresis File Run Summary (Chip Summary)

Sample Name	Sample Comment	Rest. Digest	Status	Observation	Result Label	Result Color
Lib LHO16	18x	<input type="checkbox"/>	✓			
Lib LHO17	18x	<input type="checkbox"/>	✓			
Lib LHO18	18x	<input type="checkbox"/>	✓			
Lib LHO19	18x	<input type="checkbox"/>	✓			
Lib LHO20	18x	<input type="checkbox"/>	✓			
Lib LHO21	18x	<input type="checkbox"/>	✓			
Soni sorted s100-1		<input type="checkbox"/>	✓			
Soni sorted s100-		<input type="checkbox"/>	✓			
Lib LHO1	16+7	<input type="checkbox"/>	✓			
Lib LHO2	16+7	<input type="checkbox"/>	✓			
Lib LHO3	16+7	<input type="checkbox"/>	✓			
Ladder		<input type="checkbox"/>	✓			

Chip Lot #

Reagent Kit Lot #

Chip Comments :

Assay Class: High Sensitivity DNA Assay
 Data Path: C:\...ents and Settings\Bioanalyzer\2013-07-08\2013-07-08_005.xad

Created: 7/8/2013 1:11:39 PM
 Modified: 7/8/2013 3:35:35 PM

Electrophoresis Assay Details

General Analysis Settings

Number of Available Sample and Ladder Wells (Max.) : 12
 Minimum Visible Range [s] : 32
 Maximum Visible Range [s] : 138
 Start Analysis Time Range [s] : 33
 End Analysis Time Range [s] : 137.5
 Ladder Concentration [pg/μl] : 1950
 Uses Standard Area for Ladder Fragments
 Lower Marker Concentration [pg/μl] : 125
 Upper Marker Concentration [pg/μl] : 75
 Used Upper Marker for Quantitation
 Standard Curve Fit is Point to Point
 Show Data Aligned to Lower and Upper Marker

Integrator Settings

Integration Start Time [s] : 33.05
 Integration End Time [s] : 137
 Slope Threshold : 0.8
 Height Threshold [FU] : 5
 Area Threshold : 0.1
 Width Threshold [s] : 0.6
 Baseline Plateau [s] : 0.5

Filter Settings

Filter Width [s] : 0.5
 Polynomial Order : 4

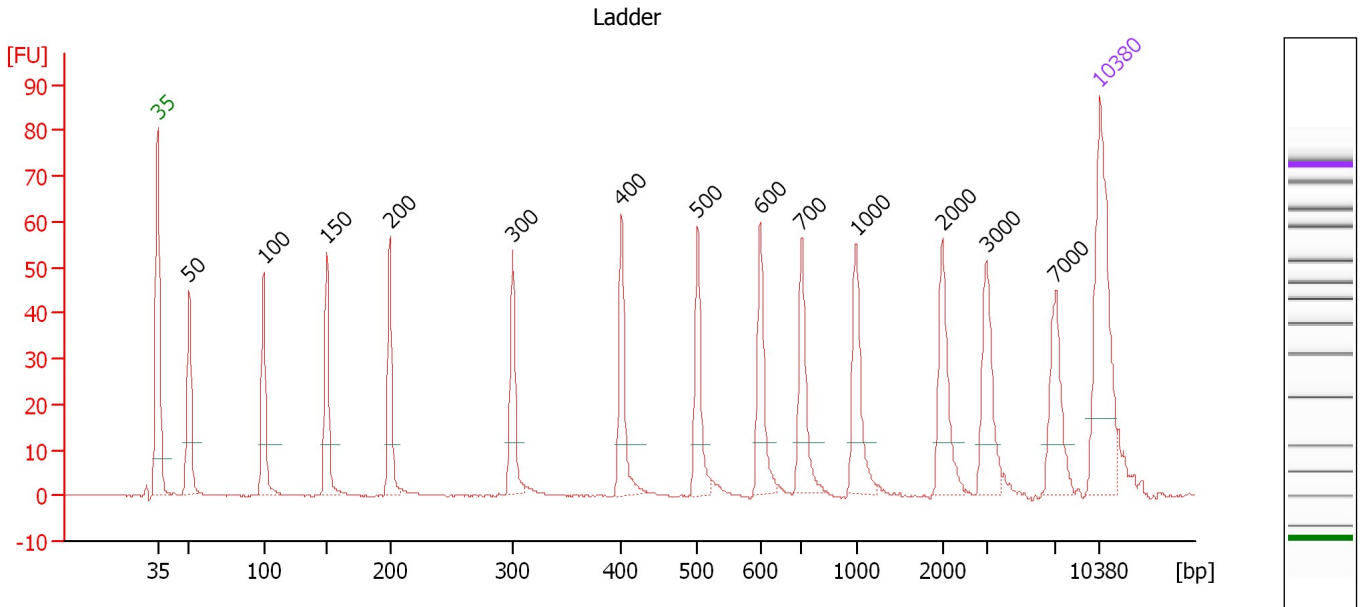
Ladder

Ladder Peak	Size	Area
1	35	160
2	50	210
3	100	208
4	150	221
5	200	242
6	300	270
7	400	305
8	500	306
9	600	336
10	700	321
11	1000	366
12	2000	413
13	3000	411
14	7000	400
15	10380	214

Assay Class: High Sensitivity DNA Assay
 Data Path: C:\...ents and Settings\Bioanalyzer\2013-07-08\2013-07-08_005.xad

Created: 7/8/2013 1:11:39 PM
 Modified: 7/8/2013 3:35:35 PM

Electropherogram Summary



Overall Results for Ladder

Noise: 0.1

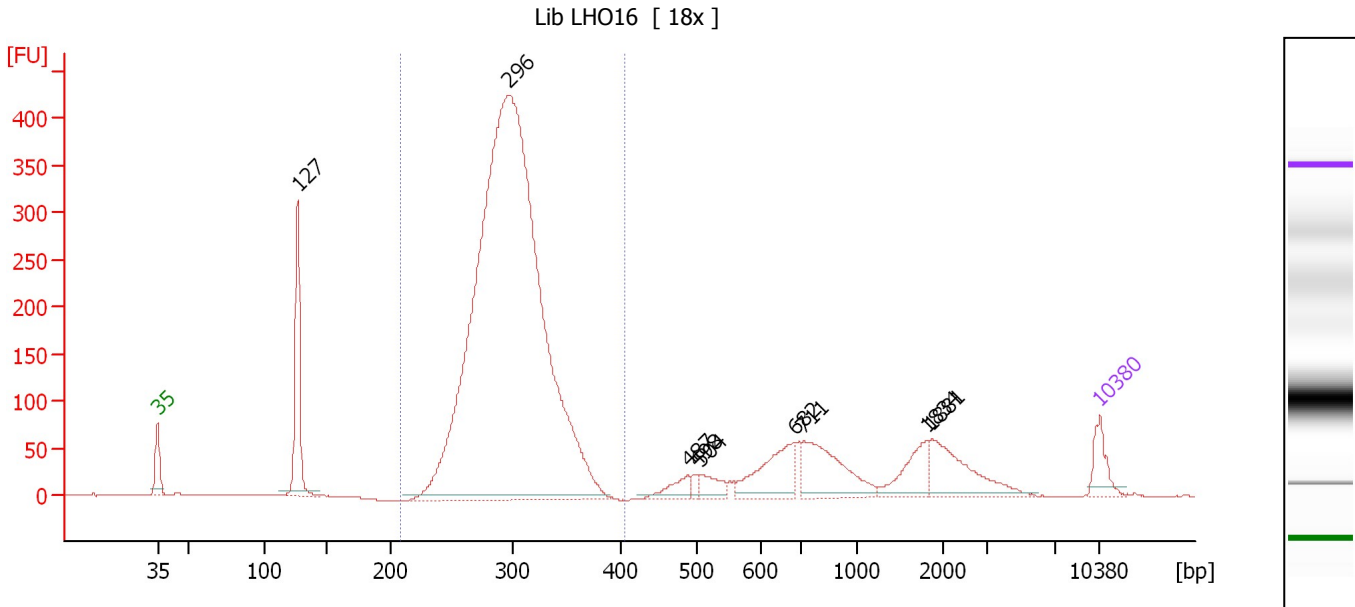
Peak table for Ladder

Peak	Size [bp]	Conc. [pg/μl]	Molarity [pmol/l]	Observations
1	35	125.00	5,411.3	Lower Marker
2	50	150.00	4,545.5	Ladder Peak
3	100	150.00	2,272.7	Ladder Peak
4	150	150.00	1,515.2	Ladder Peak
5	200	150.00	1,136.4	Ladder Peak
6	300	150.00	757.6	Ladder Peak
7	400	150.00	568.2	Ladder Peak
8	500	150.00	454.5	Ladder Peak
9	600	150.00	378.8	Ladder Peak
10	700	150.00	324.7	Ladder Peak
11	1,000	150.00	227.3	Ladder Peak
12	2,000	150.00	113.6	Ladder Peak
13	3,000	150.00	75.8	Ladder Peak
14	7,000	150.00	32.5	Ladder Peak
15	10,380	75.00	10.9	Upper Marker

Assay Class: High Sensitivity DNA Assay
 Data Path: C:\...ents and Settings\Bioanalyzer\2013-07-08\2013-07-08_005.xad

Created: 7/8/2013 1:11:39 PM
 Modified: 7/8/2013 3:35:35 PM

Electropherogram Summary Continued ...



Overall Results for sample 1 : Lib LHO16

Number of peaks found: 9 Corr. Area 1: 3,543.1
 Noise: 0.1

Peak table for sample 1 : Lib LHO16

Peak	Size [bp]	Conc. [pg/μl]	Molarity [pmol/l]	Observations
1	35	125.00	5,411.3	Lower Marker
2	127	474.81	5,667.3	
3	296	5,496.24	28,116.8	
4	487	72.54	225.5	
5	498	25.26	76.8	
6	504	69.60	209.1	
7	682	239.24	531.5	
8	711	295.07	628.6	
9	1,834	126.94	104.9	
10	1,881	212.57	171.2	
11	10,380	75.00	10.9	Upper Marker

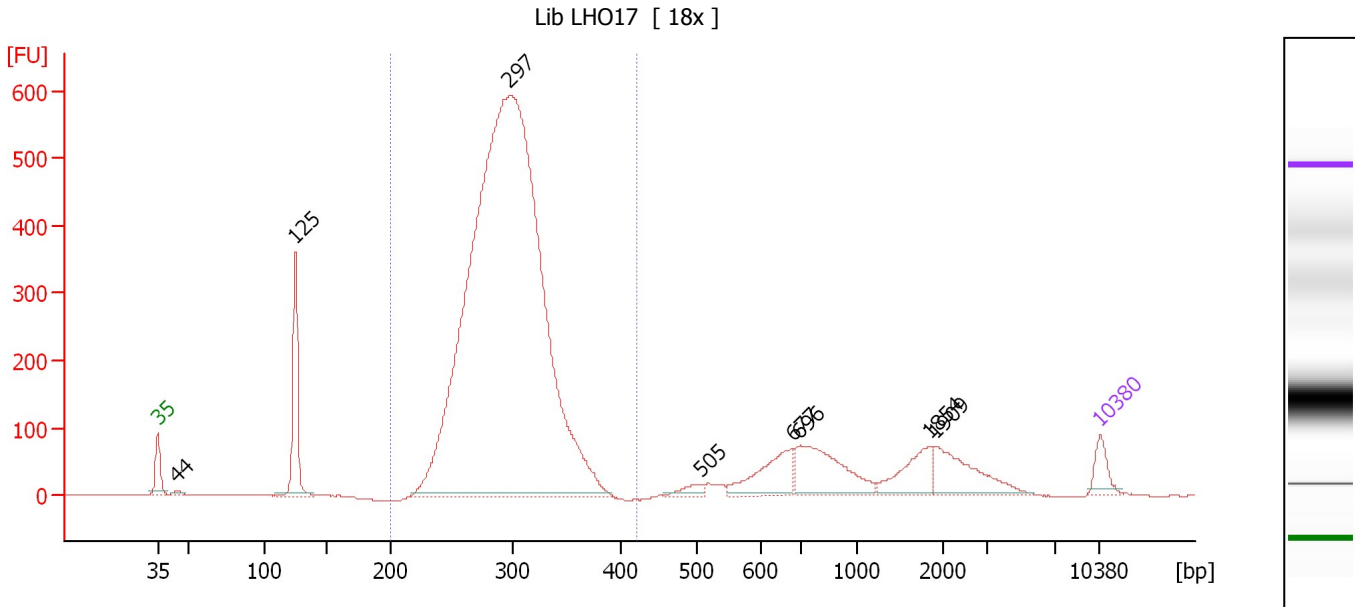
Region table for sample 1 : Lib LHO16

From [bp]	To [bp]	Average Size [bp]	Molarity [pmol/l]	Conc. [pg/μl]	Corr. Area	% of Total	Size distribution in CV [%]	Color
208	404	298	27,146.2	5,300.89	3,543.1	76	9.1	Blue

Assay Class: High Sensitivity DNA Assay
 Data Path: C:\...ents and Settings\Bioanalyzer\2013-07-08\2013-07-08_005.xad

Created: 7/8/2013 1:11:39 PM
 Modified: 7/8/2013 3:35:35 PM

Electropherogram Summary Continued ...



Overall Results for sample 2 : Lib LHO17

Number of peaks found: 8 Corr. Area 1: 5,585.0
 Noise: 0.7

Peak table for sample 2 : Lib LHO17

Peak	Size [bp]	Conc. [pg/μl]	Molarity [pmol/l]	Observations
1	35	125.00	5,411.3	Lower Marker
2	44	24.20	833.5	
3	125	533.17	6,468.1	
4	297	7,743.89	39,480.6	
5	505	49.29	148.0	
6	677	262.73	588.1	
7	696	394.76	859.8	
8	1,854	167.81	137.1	
9	1,909	233.86	185.6	
10	10,380	75.00	10.9	Upper Marker

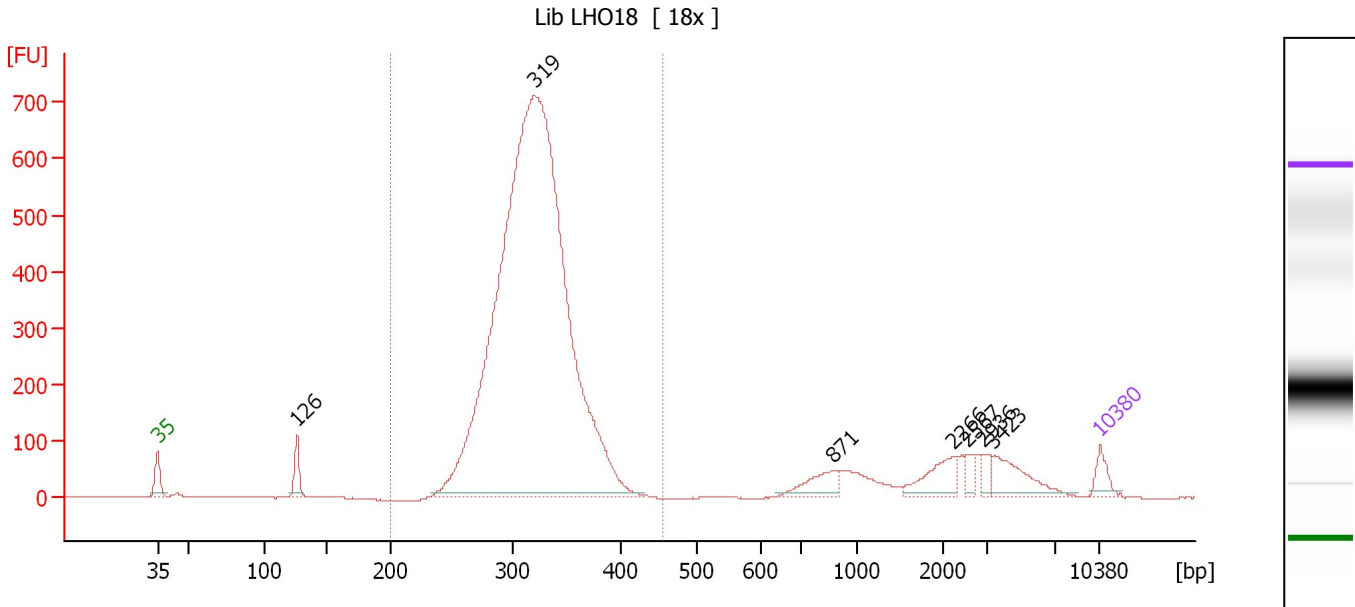
Region table for sample 2 : Lib LHO17

From [bp]	To [bp]	Average Size [bp]	Molarity [pmol/l]	Conc. [pg/μl]	Corr. Area	% of Total	Size distribution in CV [%]	Color
200	421	296	39,933.9	7,716.73	5,585.0	80	9.6	Blue

Assay Class: High Sensitivity DNA Assay
 Data Path: C:\...ents and Settings\Bioanalyzer\2013-07-08\2013-07-08_005.xad

Created: 7/8/2013 1:11:39 PM
 Modified: 7/8/2013 3:35:35 PM

Electropherogram Summary Continued ...



Overall Results for sample 3 : Lib LHO18

Number of peaks found: 7 Corr. Area 1: 6,078.1
 Noise: 0.9

Peak table for sample 3 : Lib LHO18

Peak	Size [bp]	Conc. [pg/μl]	Molarity [pmol/l]	Observations
1	35	125.00	5,411.3	Lower Marker
2	126	160.13	1,921.2	
3	319	8,995.06	42,693.3	
4	871	156.80	272.8	
5	2,266	183.30	122.6	
6	2,567	55.21	32.6	
7	2,936	58.07	30.0	
8	3,423	207.95	92.0	
9	10,380	75.00	10.9	Upper Marker

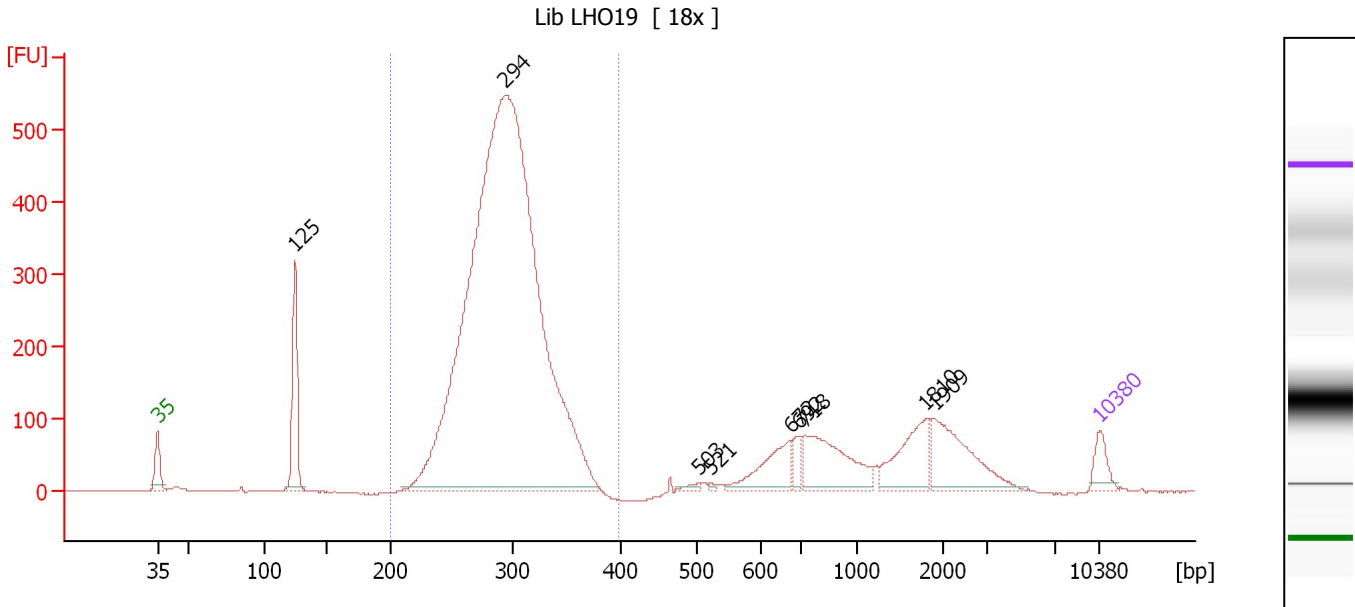
Region table for sample 3 : Lib LHO18

From [bp]	To [bp]	Average Size [bp]	Molarity [pmol/l]	Conc. [pg/μl]	Corr. Area	% of Total	Size distribution in CV [%]	Color
200	453	319	43,407.6	9,051.92	6,078.1	86	9.3	Blue

Assay Class: High Sensitivity DNA Assay
 Data Path: C:\...ents and Settings\Bioanalyzer\2013-07-08\2013-07-08_005.xad

Created: 7/8/2013 1:11:39 PM
 Modified: 7/8/2013 3:35:35 PM

Electropherogram Summary Continued ...



Overall Results for sample 4 : Lib LHO19

Number of peaks found: 9 Corr. Area 1: 4,880.3
 Noise: 0.8

Peak table for sample 4 : Lib LHO19

Peak	Size [bp]	Conc. [pg/µl]	Molarity [pmol/l]	Observations
1	35	125.00	5,411.3	Lower Marker
2	125	471.15	5,719.0	
3	294	7,360.18	37,970.4	
4	503	19.34	58.3	
5	521	8.74	25.4	
6	672	236.02	531.9	
7	692	75.18	164.7	
8	718	406.25	857.5	
9	1,810	249.43	208.8	
10	1,909	327.95	260.3	
11	10,380	75.00	10.9	Upper Marker

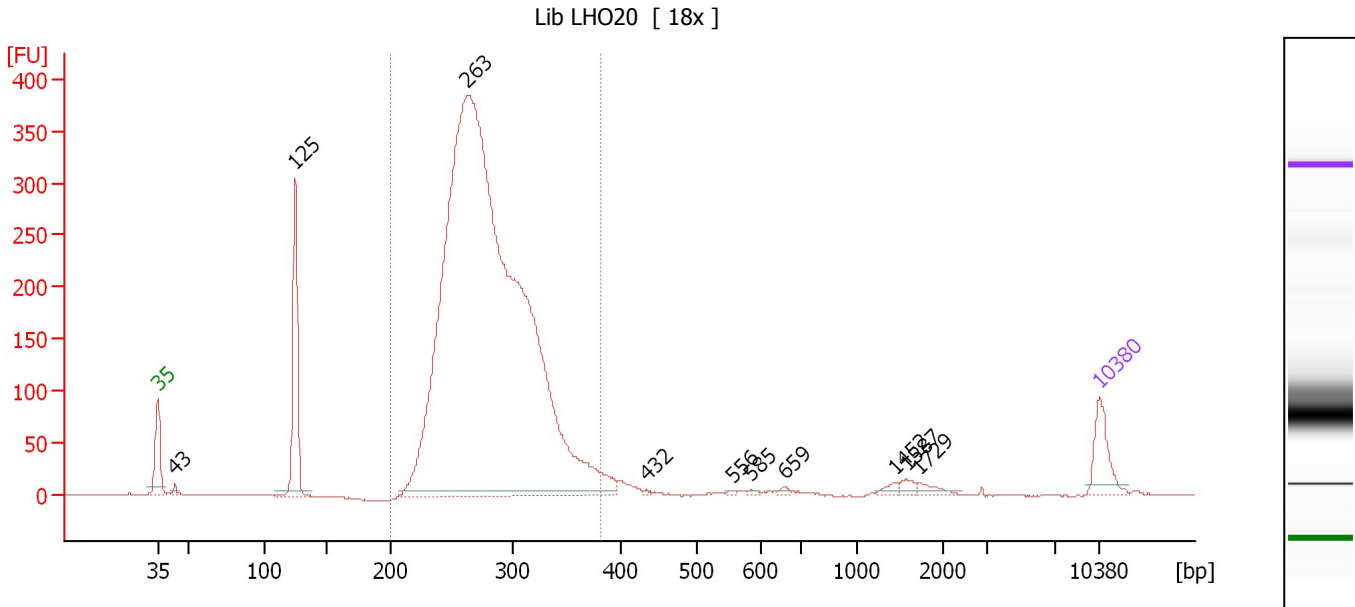
Region table for sample 4 : Lib LHO19

From [bp]	To [bp]	Average Size [bp]	Molarity [pmol/l]	Conc. [pg/µl]	Corr. Area	% of Total	Size distribution in CV [%]	Color
200	398	294	38,379.9	7,380.72	4,880.3	77	9.7	Blue

Assay Class: High Sensitivity DNA Assay
 Data Path: C:\...ents and Settings\Bioanalyzer\2013-07-08\2013-07-08_005.xad

Created: 7/8/2013 1:11:39 PM
 Modified: 7/8/2013 3:35:35 PM

Electropherogram Summary Continued ...



Overall Results for sample 5 : Lib LHO20

Number of peaks found: 10 Corr. Area 1: 3,688.3
 Noise: 0.6

Peak table for sample 5 : Lib LHO20

Peak	Size [bp]	Conc. [pg/μl]	Molarity [pmol/l]	Observations
1	35	125.00	5,411.3	Lower Marker
2	43	14.75	518.4	
3	125	355.89	4,317.1	
4	263	4,748.18	27,368.6	
5	432	3.97	13.9	
6	556	4.65	12.7	
7	585	5.15	13.3	
8	659	7.41	17.0	
9	1,452	12.09	12.6	
10	1,587	15.16	14.5	
11	1,729	17.85	15.6	
12	10,380	75.00	10.9	Upper Marker

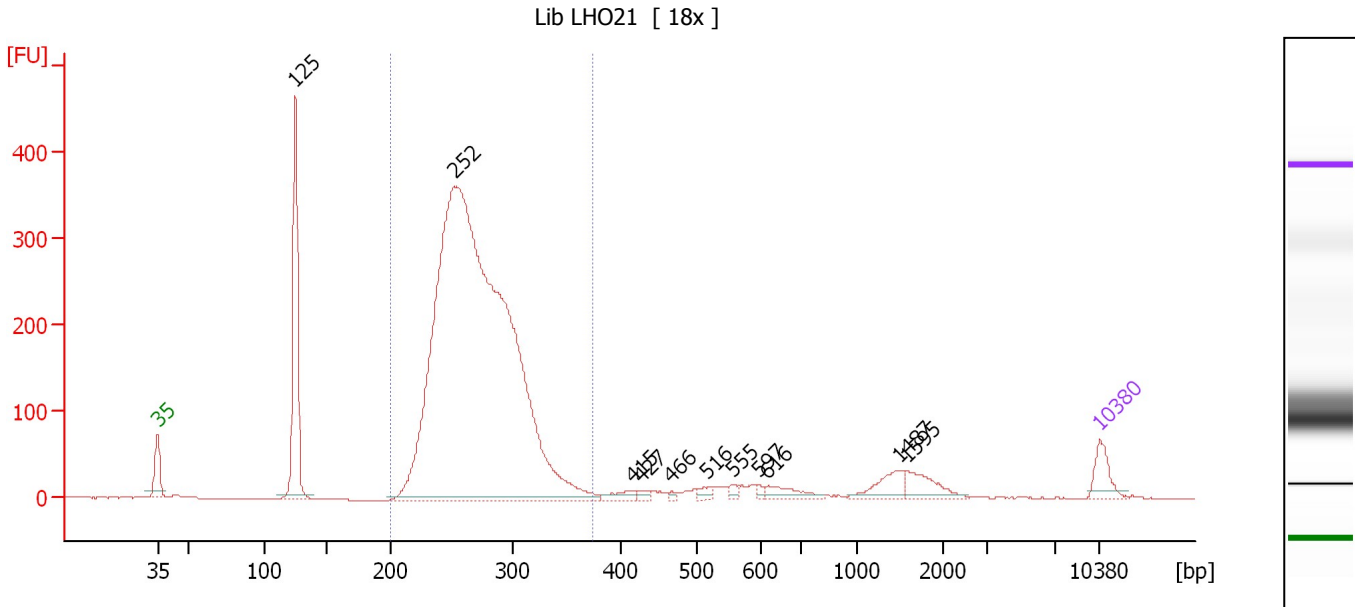
Region table for sample 5 : Lib LHO20

From [bp]	To [bp]	Average Size [bp]	Molarity [pmol/l]	Conc. [pg/μl]	Corr. Area	% of Total	Size distribution in CV [%]	Color
200	381	281	24,550.2	4,489.19	3,688.3	90	11.5	Blue

Assay Class: High Sensitivity DNA Assay
 Data Path: C:\...ents and Settings\Bioanalyzer\2013-07-08\2013-07-08_005.xad

Created: 7/8/2013 1:11:39 PM
 Modified: 7/8/2013 3:35:35 PM

Electropherogram Summary Continued ...



Overall Results for sample 6 : Lib LHO21

Number of peaks found: 11 Corr. Area 1: 3,377.1
 Noise: 0.2

Peak table for sample 6 : Lib LHO21

Peak	Size [bp]	Conc. [pg/μl]	Molarity [pmol/l]	Observations
1	35	125.00	5,411.3	Lower Marker
2	125	771.97	9,362.9	
3	252	6,011.37	36,124.4	
4	415	39.39	143.7	
5	427	21.90	77.8	
6	466	9.57	31.1	
7	516	26.52	77.8	
8	555	20.50	56.0	
9	597	14.59	37.0	
10	616	69.56	171.0	
11	1,487	89.97	91.6	
12	1,595	95.28	90.5	
13	10,380	75.00	10.9	Upper Marker

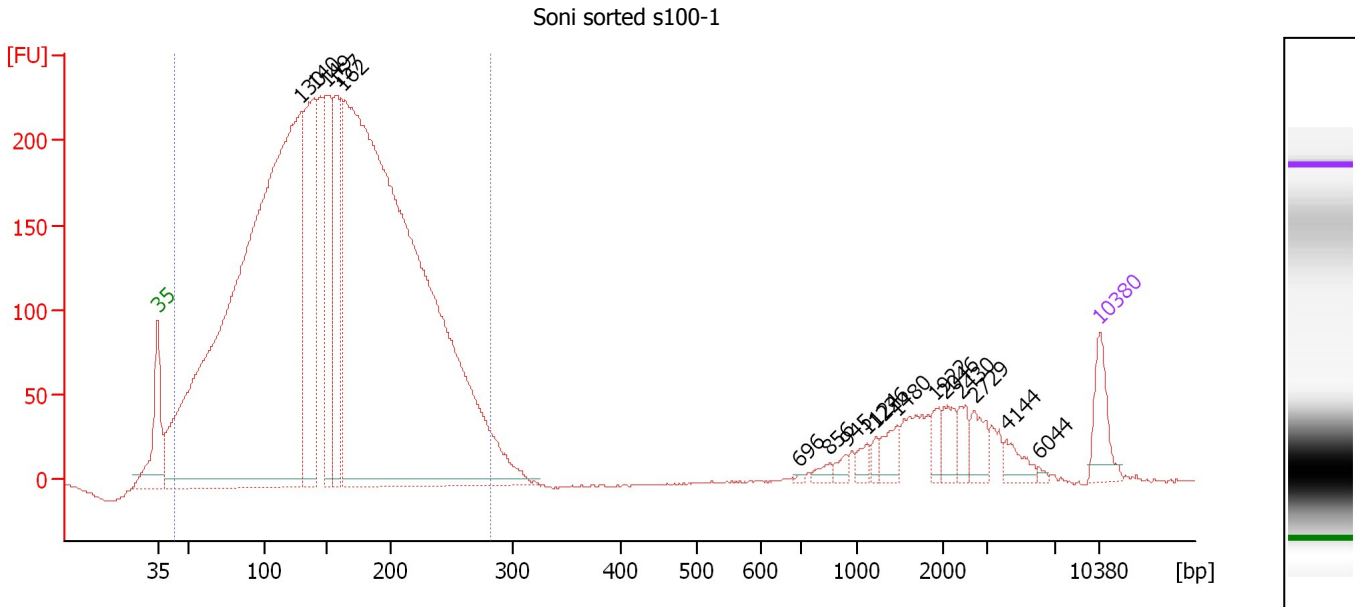
Region table for sample 6 : Lib LHO21

From [bp]	To [bp]	Average Size [bp]	Molarity [pmol/l]	Conc. [pg/μl]	Corr. Area	% of Total	Size distribution in CV [%]	Color
200	373	271	31,702.3	5,618.80	3,377.1	82	10.5	Blue

Assay Class: High Sensitivity DNA Assay
 Data Path: C:\...ents and Settings\Bioanalyzer\2013-07-08\2013-07-08_005.xad

Created: 7/8/2013 1:11:39 PM
 Modified: 7/8/2013 3:35:35 PM

Electropherogram Summary Continued ...



Overall Results for sample 7 : Soni sorted s100-1

Number of peaks found: 17 Corr. Area 1: 6,090.7
 Noise: 0.4

Peak table for sample 7 : Soni sorted s100-1

Peak	Size [bp]	Conc. [pg/μl]	Molarity [pmol/l]	Observations
1	35	125.00	5,411.3	Lower Marker
2	130	4,033.07	47,095.7	
3	140	721.96	7,834.4	
4	149	454.59	4,607.2	
5	157	409.53	3,940.6	
6	162	4,507.32	42,039.4	
7	696	4.73	10.3	
8	856	17.41	30.8	
9	945	16.79	26.9	
10	1,124	23.35	31.5	
11	1,226	16.93	20.9	
12	1,480	44.98	46.1	
13	1,922	30.37	23.9	
14	2,046	44.91	33.2	
15	2,430	34.68	21.6	
16	2,729	46.96	26.1	
17	4,144	34.90	12.8	
18	6,044	4.90	1.2	
19	10,380	75.00	10.9	Upper Marker

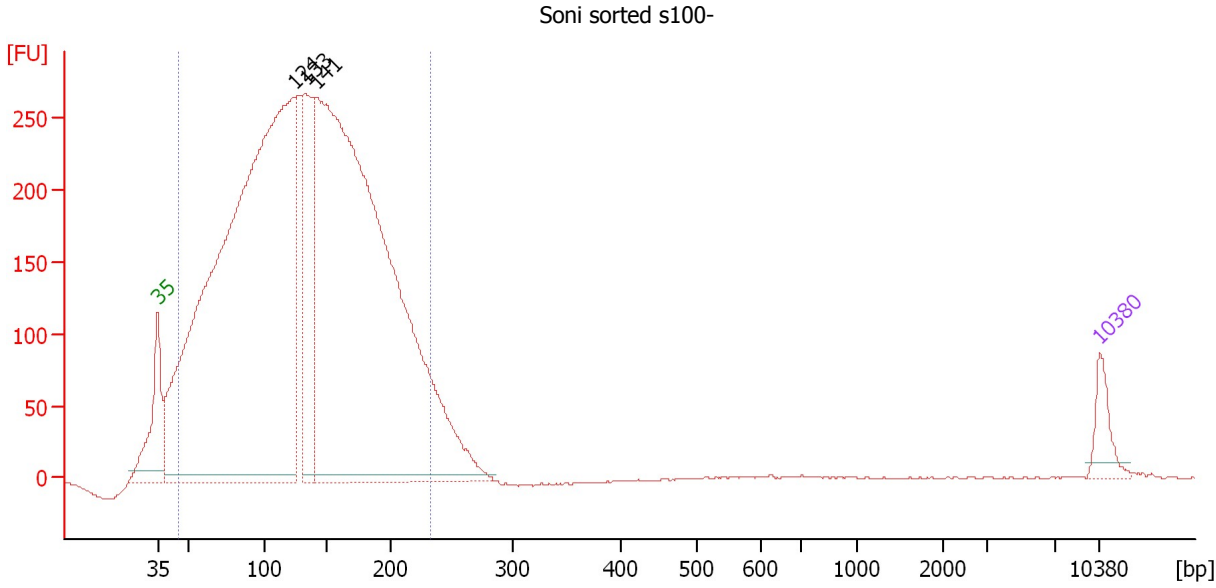
Region table for sample 7 : Soni sorted s100-1

From [bp]	To [bp]	Average Size [bp]	Molarity [pmol/l]	Conc. [pg/μl]	Corr. Area	% of Total	Size distribution in CV [%]	Color
43	282	154	120,564.3	9,967.08	6,090.7	92	35.9	Blue

Assay Class: High Sensitivity DNA Assay
 Data Path: C:\...ents and Settings\Bioanalyzer\2013-07-08\2013-07-08_005.xad

Created: 7/8/2013 1:11:39 PM
 Modified: 7/8/2013 3:35:35 PM

Electropherogram Summary Continued ...



Overall Results for sample 8 : Soni sorted s100-

Number of peaks found: 3 Corr. Area 1: 6,723.3
 Noise: 0.3

Peak table for sample 8 : Soni sorted s100-

Peak	Size [bp]	Conc. [pg/μl]	Molarity [pmol/l]	Observations
1	35	125.00	5,411.3	Lower Marker
2	124	5,308.97	64,769.2	
3	133	716.71	8,155.6	
4	141	5,120.63	54,981.0	
5	10,380	75.00	10.9	Upper Marker

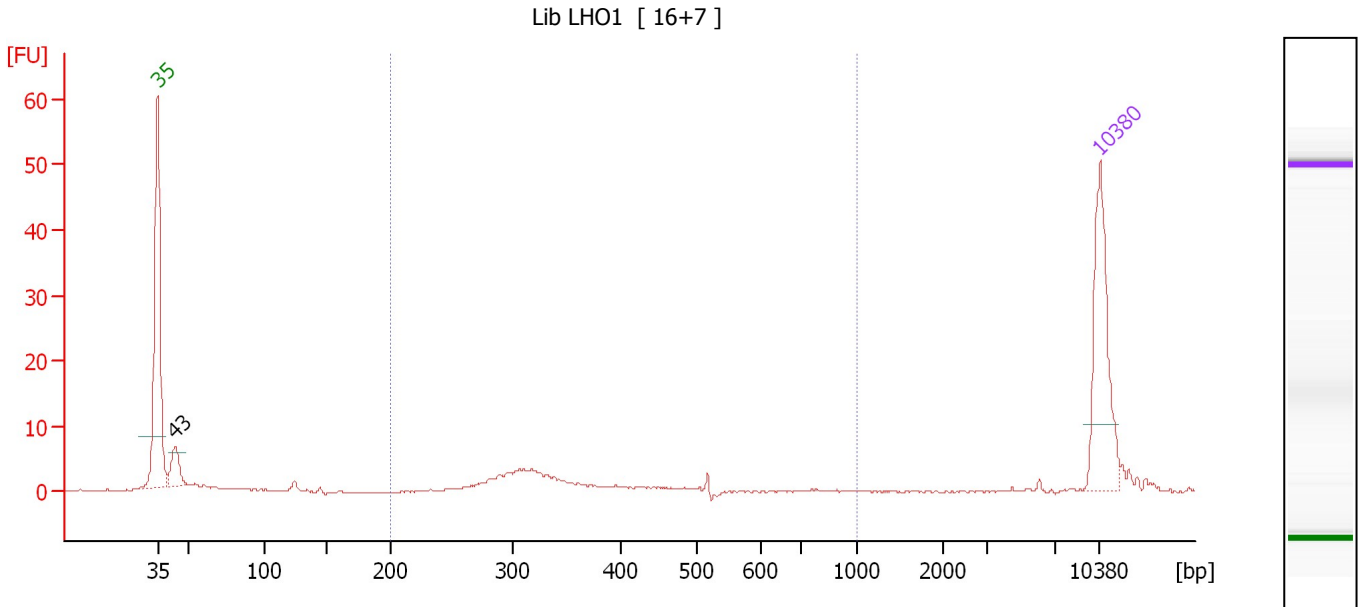
Region table for sample 8 : Soni sorted s100-

From [bp]	To [bp]	Average Size [bp]	Molarity [pmol/l]	Conc. [pg/μl]	Corr. Area	% of Total	Size distribution in CV [%]	Color
45	233	133	145,817.5	10,670.70	6,723.3	95	35.4	Blue

Assay Class: High Sensitivity DNA Assay
 Data Path: C:\...ents and Settings\Bioanalyzer\2013-07-08\2013-07-08_005.xad

Created: 7/8/2013 1:11:39 PM
 Modified: 7/8/2013 3:35:35 PM

Electropherogram Summary Continued ...



Overall Results for sample 9 : Lib LHO1

Number of peaks found: 1 Corr. Area 1: 37.4
 Noise: 0.1

Peak table for sample 9 : Lib LHO1

Peak	Size [bp]	Conc. [pg/μl]	Molarity [pmol/l]	Observations
1	35	125.00	5,411.3	Lower Marker
2	43	29.92	1,046.5	
3	10,380	75.00	10.9	Upper Marker

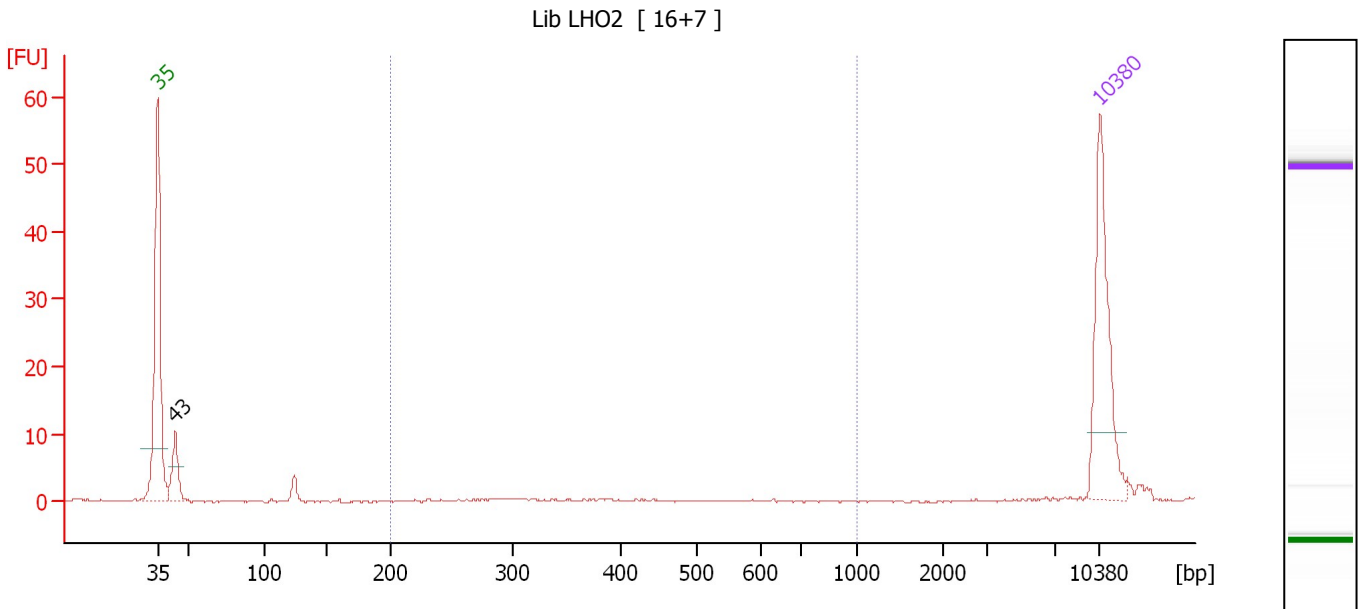
Region table for sample 9 : Lib LHO1

From [bp]	To [bp]	Average Size [bp]	Molarity [pmol/l]	Conc. [pg/μl]	Corr. Area	% of Total	Size distribution in CV [%]	Color
200	1,000	354	378.7	82.36	37.4	53	29.3	Blue

Assay Class: High Sensitivity DNA Assay
 Data Path: C:\...ents and Settings\Bioanalyzer\2013-07-08\2013-07-08_005.xad

Created: 7/8/2013 1:11:39 PM
 Modified: 7/8/2013 3:35:35 PM

Electropherogram Summary Continued ...



Overall Results for sample 10 : Lib LHO2

Number of peaks found: 1 Corr. Area 1: 3.2
 Noise: 0.1

Peak table for sample 10 : Lib LHO2

Peak	Size [bp]	Conc. [pg/μl]	Molarity [pmol/l]	Observations
1	35	125.00	5,411.3	Lower Marker
2	43	33.53	1,171.7	
3	10,380	75.00	10.9	Upper Marker

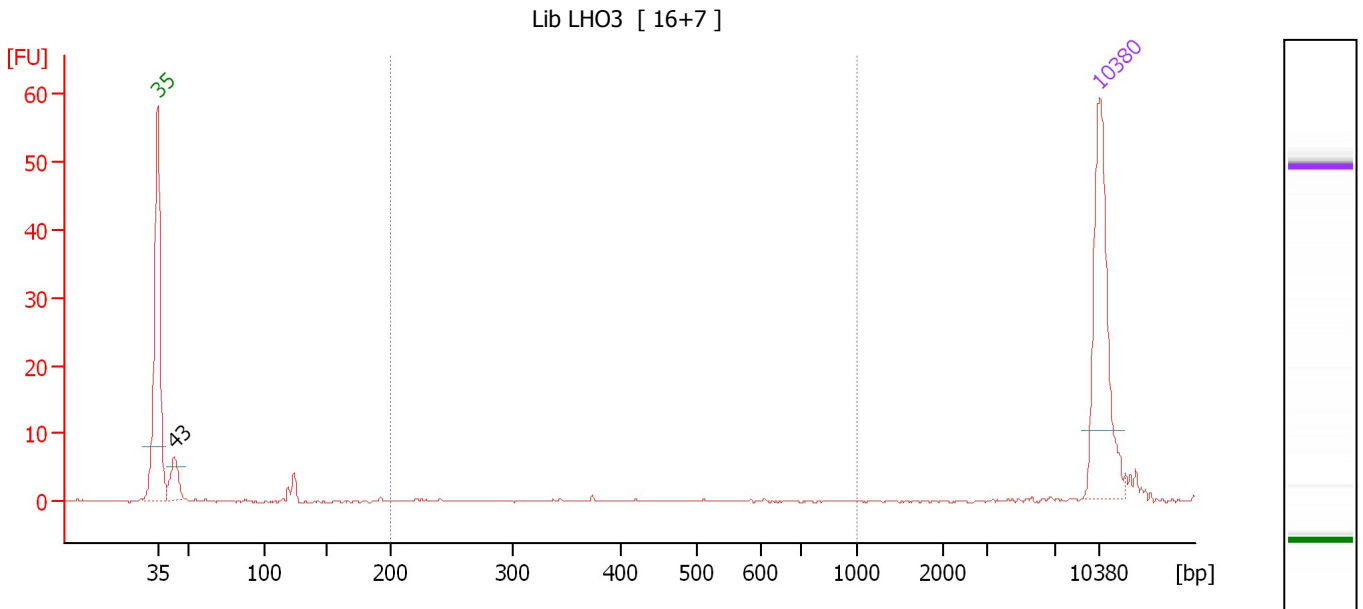
Region table for sample 10 : Lib LHO2

From [bp]	To [bp]	Average Size [bp]	Molarity [pmol/l]	Conc. [pg/μl]	Corr. Area	% of Total	Size distribution in CV [%]	Color
200	1,000	357	29.9	6.43	3.2	13	30.2	Blue

Assay Class: High Sensitivity DNA Assay
 Data Path: C:\...ents and Settings\Bioanalyzer\2013-07-08\2013-07-08_005.xad

Created: 7/8/2013 1:11:39 PM
 Modified: 7/8/2013 3:35:35 PM

Electropherogram Summary Continued ...



Overall Results for sample 11 : Lib LHO3

Number of peaks found: 1 Corr. Area 1: 2.1
 Noise: 0.1

Peak table for sample 11 : Lib LHO3

Peak	Size [bp]	Conc. [pg/μl]	Molarity [pmol/l]	Observations
1	35	125.00	5,411.3	Lower Marker
2	43	25.45	894.5	
3	10,380	75.00	10.9	Upper Marker

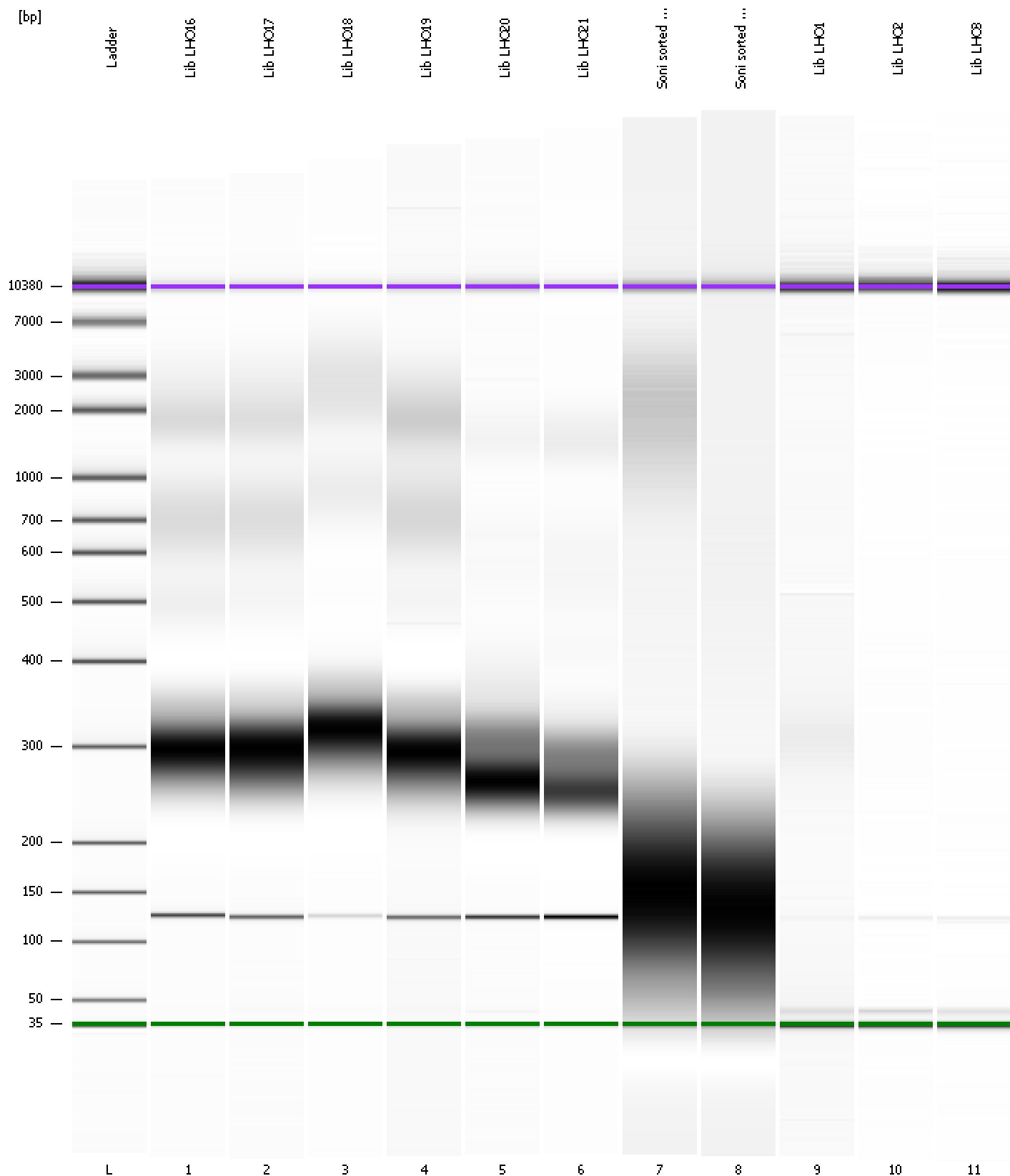
Region table for sample 11 : Lib LHO3

From [bp]	To [bp]	Average Size [bp]	Molarity [pmol/l]	Conc. [pg/μl]	Corr. Area	% of Total	Size distribution in CV [%]	Color
200	1,000	366	18.9	3.89	2.1	8	33.2	Blue

Assay Class: High Sensitivity DNA Assay
Data Path: C:\...ents and Settings\Bioanalyzer\2013-07-08\2013-07-08_005.xad

Created: 7/8/2013 1:11:39 PM
Modified: 7/8/2013 3:35:35 PM

Gel Image



Assay Class: High Sensitivity DNA Assay Created: 7/8/2013 1:11:39 PM
 Data Path: C:\...ents and Settings\Bioanalyzer\2013-07-08\2013-07-08_005.xad Modified: 7/8/2013 3:35:35 PM

Run Logbook

Description	Number	Source	Category	Sub Category	Time	Time Zone	User	Host
Run ended on port 1 (Number of wells acquired: 12)		Instrument	Run		7/8/2013 1:52:07 PM	(GMT --07:00) Pacific Standard Time	UC Davis	D8XSMGH1
Run started on port 1 (File: C:\Documents and Settings\Bioanalyzer\2013-07-08\2013-07-08_005.xad)		Instrument	Run		7/8/2013 1:11:44 PM	(GMT --07:00) Pacific Standard Time	UC Davis	D8XSMGH1
Product Number : G2938B		Instrument	Run		7/8/2013 1:11:44 PM	(GMT --07:00) Pacific Standard Time	UC Davis	D8XSMGH1
Name :		Instrument	Run		7/8/2013 1:11:44 PM	(GMT --07:00) Pacific Standard Time	UC Davis	D8XSMGH1
Vendor : Agilent Technologies		Instrument	Run		7/8/2013 1:11:44 PM	(GMT --07:00) Pacific Standard Time	UC Davis	D8XSMGH1
Serial# : DE13701086		Instrument	Run		7/8/2013 1:11:44 PM	(GMT --07:00) Pacific Standard Time	UC Davis	D8XSMGH1
Firmware : C.01.069		Instrument	Run		7/8/2013 1:11:44 PM	(GMT --07:00) Pacific Standard Time	UC Davis	D8XSMGH1
Cartridge : Electrode		Instrument	Run		7/8/2013 1:11:44 PM	(GMT --07:00) Pacific Standard Time	UC Davis	D8XSMGH1