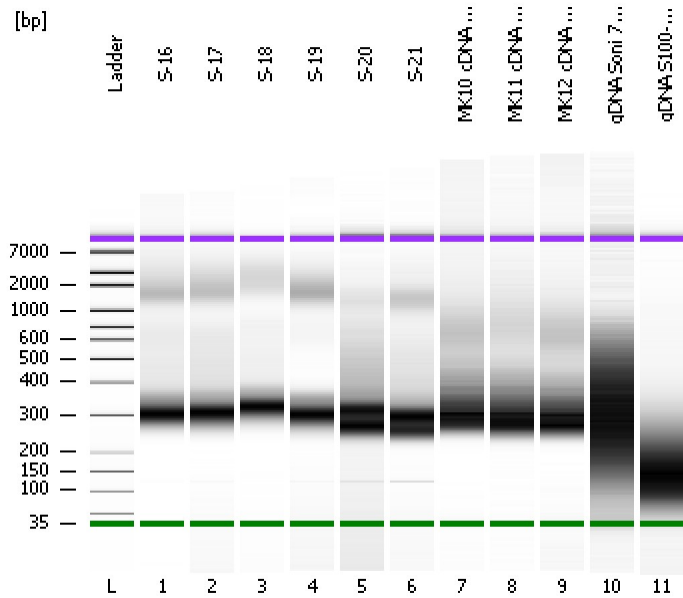


Assay Class: High Sensitivity DNA Assay  
Data Path: C:\...ents and Settings\Bioanalyzer\2013-07-08\2013-07-08\_007.xad

Created: 7/8/2013 4:17:01 PM  
Modified: 7/8/2013 4:59:46 PM

**Electrophoresis File Run Summary**



Instrument Information:

Instrument Name: DE13701086      Firmware: C.01.069  
Serial#: DE13701086      Type: G2938B

Assay Information:

Assay Origin Path: C:\Program Files\Agilent\2100 bioanalyzer\2100 expert\assays\dsDNA\High Sensitivity DNA.xsy  
Assay Class: High Sensitivity DNA Assay  
Version: 1.03  
Assay Comments: Copyright © 2003-2010 Agilent Technologies

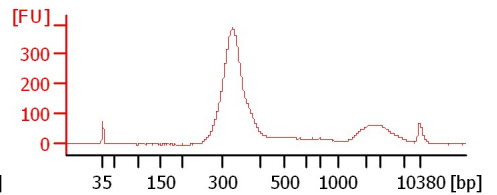
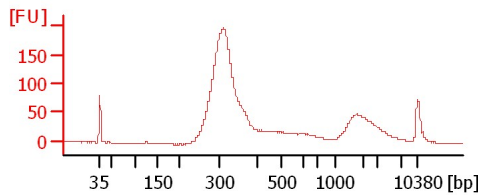
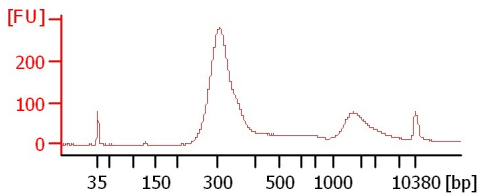
Chip Information:

Chip Lot #:   
Reagent Kit Lot #:   
Chip Comments:

**S-16**

**S-17**

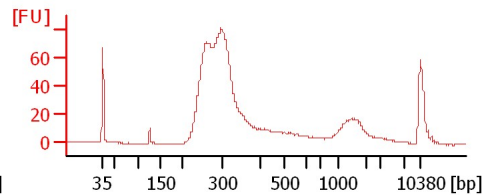
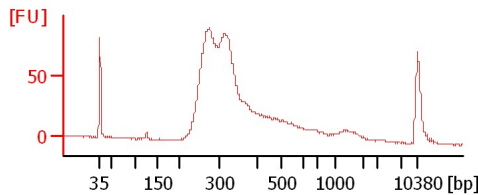
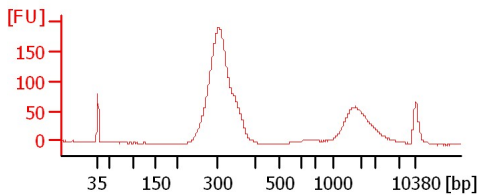
**S-18**



**S-19**

**S-20**

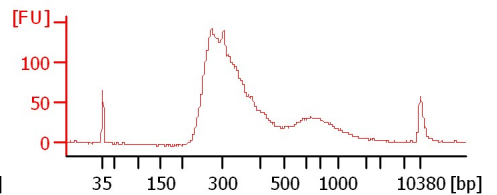
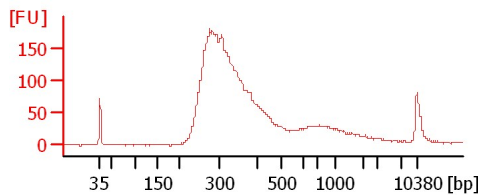
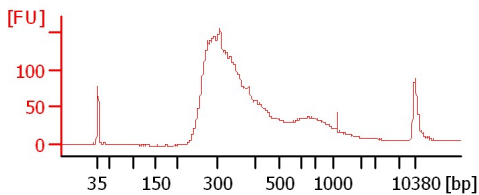
**S-21**



**MK10 cDNA Lib 1:6**

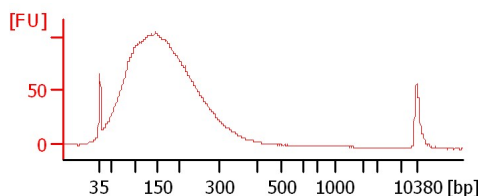
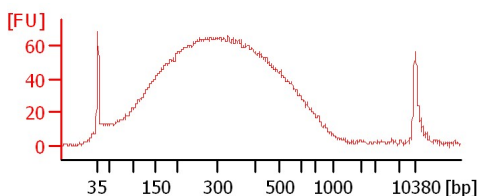
**MK11 cDNA Lib 1:6**

**MK12 cDNA Lib 1:6**



**gDNA Soni 7/8/13 1:15**

**gDNA S100-1 Soni 1:17**



Assay Class: High Sensitivity DNA Assay  
Data Path: C:\...ents and Settings\Bioanalyzer\2013-07-08\2013-07-08\_007.xad

Created: 7/8/2013 4:17:01 PM  
Modified: 7/8/2013 4:59:46 PM

**Electrophoresis File Run Summary (Chip Summary)**

Sample Name	Sample Comment	Rest. Digest	Status	Observation	Result Label	Result Color
S-16		<input type="checkbox"/>	✓			
S-17		<input type="checkbox"/>	✓			
S-18		<input type="checkbox"/>	✓			
S-19		<input type="checkbox"/>	✓			
S-20		<input type="checkbox"/>	✓			
S-21		<input type="checkbox"/>	✓			
MK10 cDNA Lib 1:6		<input type="checkbox"/>	✓			
MK11 cDNA Lib 1:6		<input type="checkbox"/>	✓			
MK12 cDNA Lib 1:6		<input type="checkbox"/>	✓			
gDNA Soni 7/8/13 1:15		<input type="checkbox"/>	✓			
gDNA S100-1 Soni 1:17		<input type="checkbox"/>	✓			
Ladder		<input type="checkbox"/>	✓			

**Chip Lot #**

**Reagent Kit Lot #**

**Chip Comments :**

Assay Class: High Sensitivity DNA Assay  
Data Path: C:\...ents and Settings\Bioanalyzer\2013-07-08\2013-07-08\_007.xad

Created: 7/8/2013 4:17:01 PM  
Modified: 7/8/2013 4:59:46 PM

**Electrophoresis Assay Details**

**General Analysis Settings**

Number of Available Sample and Ladder Wells (Max.) : 12  
Minimum Visible Range [s] : 32  
Maximum Visible Range [s] : 138  
Start Analysis Time Range [s] : 33  
End Analysis Time Range [s] : 137.5  
Ladder Concentration [pg/μl] : 1950  
Uses Standard Area for Ladder Fragments  
Lower Marker Concentration [pg/μl] : 125  
Upper Marker Concentration [pg/μl] : 75  
Used Upper Marker for Quantitation  
Standard Curve Fit is Point to Point  
Show Data Aligned to Lower and Upper Marker

**Integrator Settings**

Integration Start Time [s] : 33.05  
Integration End Time [s] : 137  
Slope Threshold : 0.8  
Height Threshold [FU] : 5  
Area Threshold : 0.1  
Width Threshold [s] : 0.6  
Baseline Plateau [s] : 0.5

**Filter Settings**

Filter Width [s] : 0.5  
Polynomial Order : 4

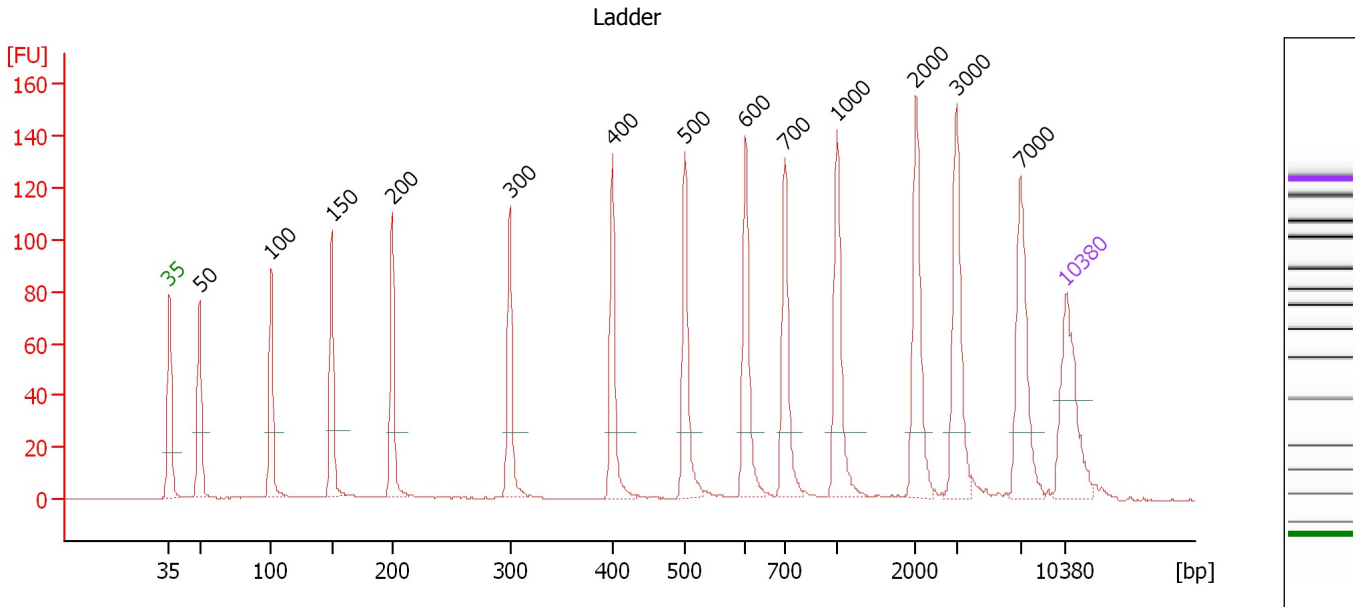
**Ladder**

Ladder Peak	Size	Area
1	35	160
2	50	210
3	100	208
4	150	221
5	200	242
6	300	270
7	400	305
8	500	306
9	600	336
10	700	321
11	1000	366
12	2000	413
13	3000	411
14	7000	400
15	10380	214

Assay Class: High Sensitivity DNA Assay  
 Data Path: C:\...ents and Settings\Bioanalyzer\2013-07-08\2013-07-08\_007.xad

Created: 7/8/2013 4:17:01 PM  
 Modified: 7/8/2013 4:59:46 PM

**Electropherogram Summary**



**Overall Results for Ladder**

Noise: 0.1

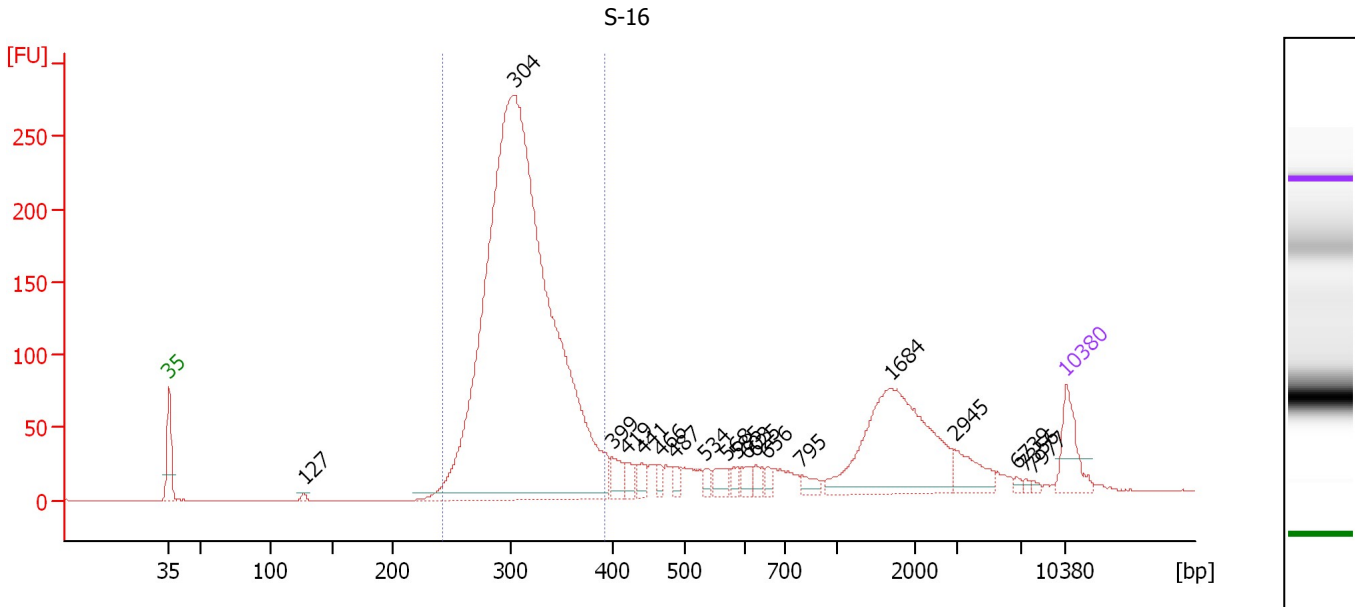
**Peak table for Ladder**

Peak	Size [bp]	Conc. [pg/μl]	Molarity [pmol/l]	Observations
1	35	125.00	5,411.3	Lower Marker
2	50	150.00	4,545.5	Ladder Peak
3	100	150.00	2,272.7	Ladder Peak
4	150	150.00	1,515.2	Ladder Peak
5	200	150.00	1,136.4	Ladder Peak
6	300	150.00	757.6	Ladder Peak
7	400	150.00	568.2	Ladder Peak
8	500	150.00	454.5	Ladder Peak
9	600	150.00	378.8	Ladder Peak
10	700	150.00	324.7	Ladder Peak
11	1,000	150.00	227.3	Ladder Peak
12	2,000	150.00	113.6	Ladder Peak
13	3,000	150.00	75.8	Ladder Peak
14	7,000	150.00	32.5	Ladder Peak
15	10,380	75.00	10.9	Upper Marker

Assay Class: High Sensitivity DNA Assay  
 Data Path: C:\...ents and Settings\Bioanalyzer\2013-07-08\2013-07-08\_007.xad

Created: 7/8/2013 4:17:01 PM  
 Modified: 7/8/2013 4:59:46 PM

**Electropherogram Summary Continued ...**



**Overall Results for sample 1 : S-16**

Number of peaks found: 19      Corr. Area 1: 2,345.2  
 Noise: 0.2

**Peak table for sample 1 : S-16**

Peak	Size [bp]	Conc. [pg/μl]	Molarity [pmol/l]	Observations
1	35	125.00	5,411.3	Lower Marker
2	127	7.83	93.3	
3	304	3,337.03	16,610.6	
4	399	47.56	180.4	
5	419	30.14	108.9	
6	441	30.16	103.6	
7	466	19.55	63.6	
8	487	19.60	61.0	
9	534	20.08	57.0	
10	568	35.55	94.9	
11	585	18.50	47.9	
12	603	21.90	55.0	
13	625	20.75	50.3	
14	656	14.76	34.1	
15	795	24.73	47.2	
16	1,684	423.00	380.6	
17	2,945	64.76	33.3	
18	6,739	6.42	1.4	
19	7,356	4.22	0.9	
20	7,977	4.74	0.9	
21	10,380	75.00	10.9	Upper Marker

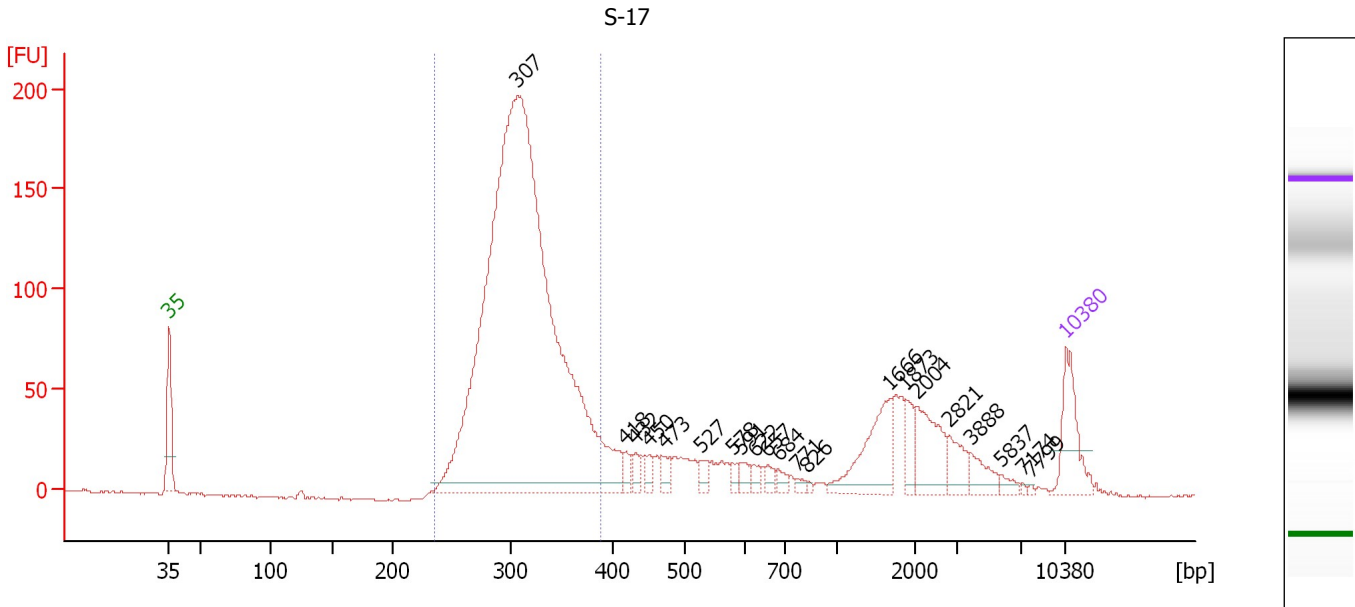
**Region table for sample 1 : S-16**

From [bp]	To [bp]	Average Size [bp]	Molarity [pmol/l]	Conc. [pg/μl]	Corr. Area	% of Total	Size distribution in CV [%]	Color
242	393	312	15,562.8	3,176.77	2,345.2	72	9.6	Blue

Assay Class: High Sensitivity DNA Assay  
 Data Path: C:\...ents and Settings\Bioanalyzer\2013-07-08\2013-07-08\_007.xad

Created: 7/8/2013 4:17:01 PM  
 Modified: 7/8/2013 4:59:46 PM

**Electropherogram Summary Continued ...**



**Overall Results for sample 2 : S-17**

Number of peaks found: 21                      Corr. Area 1: 1,694.8  
 Noise: 0.6

**Peak table for sample 2 : S-17**

Peak	Size [bp]	Conc. [pg/μl]	Molarity [pmol/l]	Observations
1	35	125.00	5,411.3	Lower Marker
2	307	2,384.37	11,760.9	
3	418	19.37	70.3	
4	432	18.50	64.9	
5	450	17.76	59.8	
6	473	18.20	58.3	
7	527	19.26	55.4	
8	578	12.98	34.0	
9	591	18.57	47.6	
10	622	13.33	32.5	
11	657	13.23	30.5	
12	684	13.14	29.1	
13	771	7.29	14.3	
14	826	3.82	7.0	
15	1,666	112.05	101.9	
16	1,873	29.70	24.0	
17	2,004	83.57	63.2	
18	2,821	37.17	20.0	
19	3,888	31.26	12.2	
20	5,837	10.39	2.7	
21	7,174	2.53	0.5	
22	7,799	2.16	0.4	
23	10,380	75.00	10.9	Upper Marker

Assay Class: High Sensitivity DNA Assay  
Data Path: C:\...ents and Settings\Bioanalyzer\2013-07-08\2013-07-08\_007.xad

Created: 7/8/2013 4:17:01 PM  
Modified: 7/8/2013 4:59:46 PM

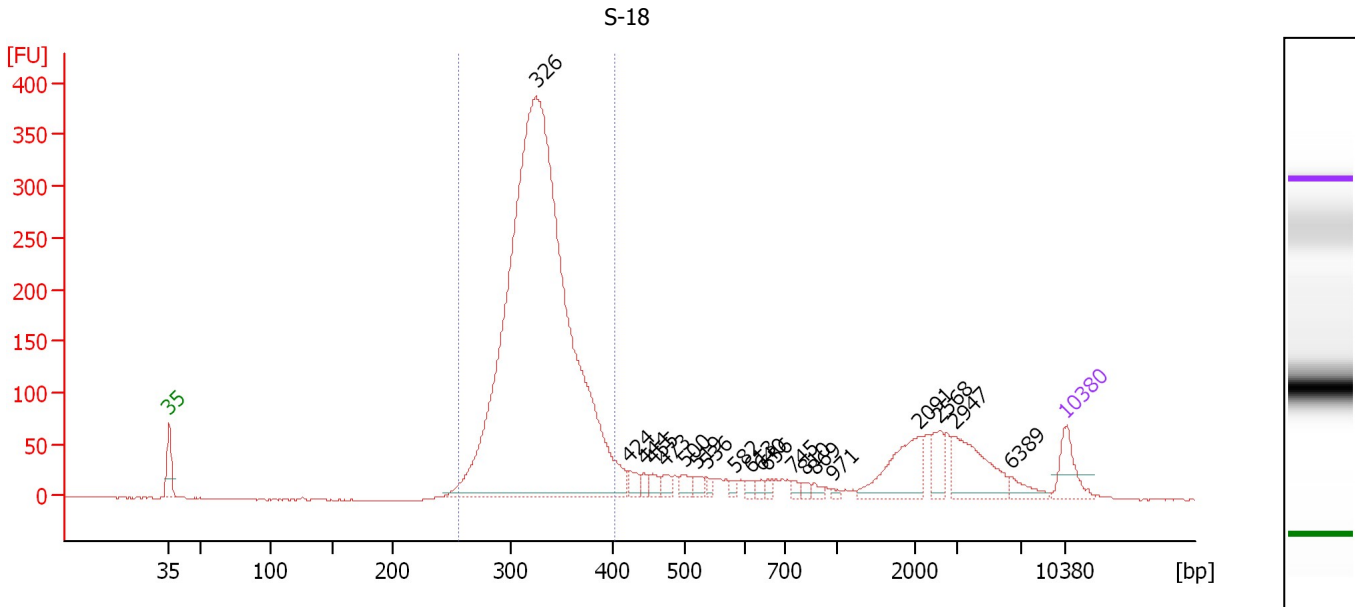
**Electropherogram Summary Continued ...****... Region table for sample 2 :      S-17**

<b>From [bp]</b>	<b>To [bp]</b>	<b>Average Size [bp]</b>	<b>Molarity [pmol/l]</b>	<b>Conc. [pg/μl]</b>	<b>Corr. Area</b>	<b>% of Total</b>	<b>Size distribution in CV [%]</b>	<b>Co lor</b>
237	388	312	11,108.0	2,265.95	1,694.8	70	9.6	

Assay Class: High Sensitivity DNA Assay  
 Data Path: C:\...ents and Settings\Bioanalyzer\2013-07-08\2013-07-08\_007.xad

Created: 7/8/2013 4:17:01 PM  
 Modified: 7/8/2013 4:59:46 PM

**Electropherogram Summary Continued ...**



**Overall Results for sample 3 : S-18**

Number of peaks found: 20                      Corr. Area 1: 3,005.1  
 Noise: 0.6

**Peak table for sample 3 : S-18**

Peak	Size [bp]	Conc. [pg/μl]	Molarity [pmol/l]	Observations
1	35	125.00	5,411.3	Lower Marker
2	326	4,070.25	18,945.6	
3	424	37.89	135.5	
4	444	25.39	86.7	
5	455	27.01	89.9	
6	473	29.11	93.3	
7	500	34.40	104.3	
8	519	26.34	76.9	
9	536	15.57	44.0	
10	582	14.99	39.0	
11	613	16.56	40.9	
12	640	16.70	39.5	
13	656	16.07	37.1	
14	745	17.30	35.2	
15	810	13.56	25.3	
16	869	14.41	25.1	
17	971	8.28	12.9	
18	2,091	163.72	118.6	
19	2,568	58.54	34.5	
20	2,947	168.81	86.8	
21	6,389	34.29	8.1	
22	10,380	75.00	10.9	Upper Marker

**Region table for sample 3 : S-18**

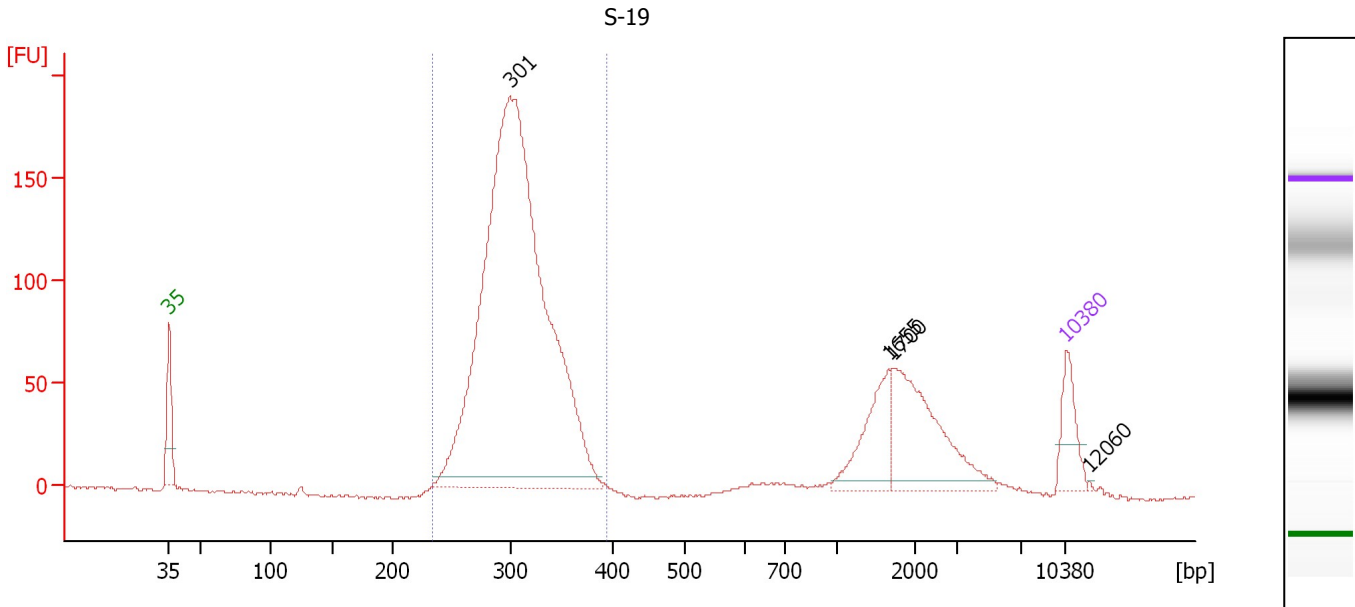
From [bp]	To [bp]	Average Size [bp]	Molarity [pmol/l]	Conc. [pg/μl]	Corr. Area	% of Total	Size distribution in CV [%]	Color
257	402	329	18,460.9	3,977.75	3,005.1	76	8.7	Blue



Assay Class: High Sensitivity DNA Assay  
 Data Path: C:\...ents and Settings\Bioanalyzer\2013-07-08\2013-07-08\_007.xad

Created: 7/8/2013 4:17:01 PM  
 Modified: 7/8/2013 4:59:46 PM

**Electropherogram Summary Continued ...**



**Overall Results for sample 4 : S-19**

Number of peaks found: 4                      Corr. Area 1: 1,563.5  
 Noise: 0.7

**Peak table for sample 4 : S-19**

Peak	Size [bp]	Conc. [pg/μl]	Molarity [pmol/l]	Observations
1	35	125.00	5,411.3	Lower Marker
2	301	2,400.36	12,095.8	
3	1,655	141.85	129.9	
4	1,700	271.08	241.7	
5	10,380	75.00	10.9	Upper Marker
6	12,060	0.00	0.0	

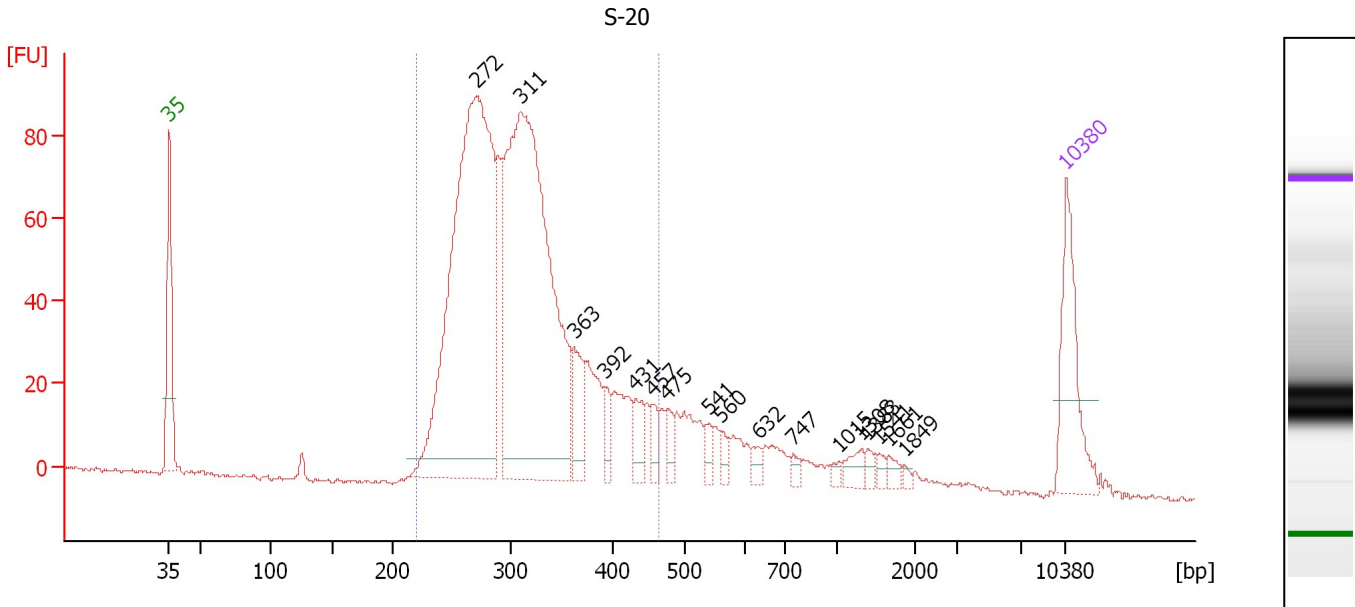
**Region table for sample 4 : S-19**

From [bp]	To [bp]	Average Size [bp]	Molarity [pmol/l]	Conc. [pg/μl]	Corr. Area	% of Total	Size distribution in CV [%]	Color
235	394	308	11,772.5	2,368.87	1,563.5	78	9.2	Blue

Assay Class: High Sensitivity DNA Assay  
 Data Path: C:\...ents and Settings\Bioanalyzer\2013-07-08\2013-07-08\_007.xad

Created: 7/8/2013 4:17:01 PM  
 Modified: 7/8/2013 4:59:46 PM

**Electropherogram Summary Continued ...**



**Overall Results for sample 5 : S-20**

Number of peaks found: 17      Corr. Area 1: 1,318.7  
 Noise: 0.5

**Peak table for sample 5 : S-20**

Peak	Size [bp]	Conc. [pg/μl]	Molarity [pmol/l]	Observations
1	35	125.00	5,411.3	Lower Marker
2	272	711.45	3,963.5	
3	311	669.70	3,262.4	
4	363	44.69	186.6	
5	392	20.90	80.8	
6	431	26.99	94.8	
7	457	17.48	58.0	
8	475	16.24	51.8	
9	541	11.46	32.1	
10	560	9.52	25.8	
11	632	9.91	23.8	
12	747	7.34	14.9	
13	1,015	5.28	7.9	
14	1,308	13.29	15.4	
15	1,383	7.05	7.7	
16	1,541	5.18	5.1	
17	1,661	7.54	6.9	
18	1,849	3.39	2.8	
19	10,380	75.00	10.9	Upper Marker

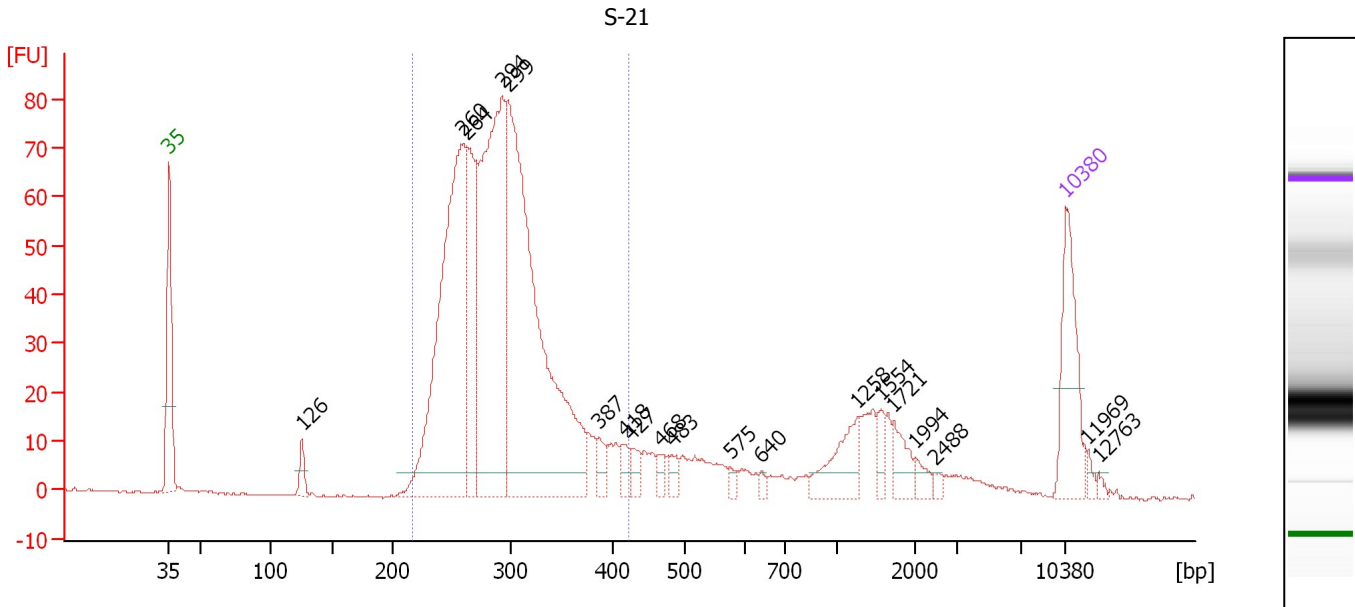
**Region table for sample 5 : S-20**

From [bp]	To [bp]	Average Size [bp]	Molarity [pmol/l]	Conc. [pg/μl]	Corr. Area	% of Total	Size distribution in CV [%]	Color
220	464	313	8,508.6	1,700.02	1,318.7	84	16.6	Blue

Assay Class: High Sensitivity DNA Assay  
 Data Path: C:\...ents and Settings\Bioanalyzer\2013-07-08\2013-07-08\_007.xad

Created: 7/8/2013 4:17:01 PM  
 Modified: 7/8/2013 4:59:46 PM

**Electropherogram Summary Continued ...**



**Overall Results for sample 6 : S-21**

Number of peaks found: 19                      Corr. Area 1: 979.2  
 Noise: 0.2

**Peak table for sample 6 : S-21**

Peak	Size [bp]	Conc. [pg/μl]	Molarity [pmol/l]	Observations
1	35	125.00	5,411.3	Lower Marker
2	126	19.77	238.6	
3	260	466.64	2,719.0	
4	264	161.79	928.2	
5	294	419.63	2,166.1	
6	299	599.27	3,040.8	
7	387	16.51	64.6	
8	418	15.60	56.5	
9	427	15.15	53.8	
10	468	10.82	35.1	
11	483	11.87	37.3	
12	575	6.44	17.0	
13	640	5.06	12.0	
14	1,258	49.22	59.3	
15	1,554	13.99	13.6	
16	1,721	23.98	21.1	
17	1,994	9.98	7.6	
18	2,488	4.35	2.7	
19	10,380	75.00	10.9	Upper Marker
20	11,969	0.00	0.0	
21	12,763	0.00	0.0	

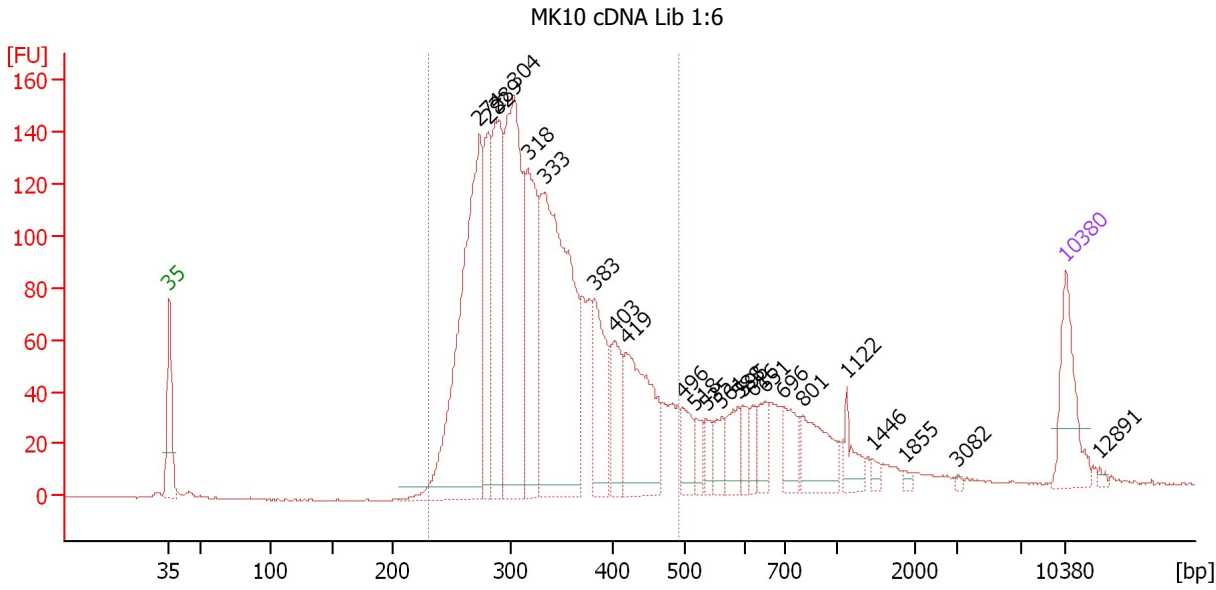
**Region table for sample 6 : S-21**

From [bp]	To [bp]	Average Size [bp]	Molarity [pmol/l]	Conc. [pg/μl]	Corr. Area	% of Total	Size distribution in CV [%]	Color
217	422	294	8,861.0	1,683.02	979.2	79	13.7	Blue

Assay Class: High Sensitivity DNA Assay  
 Data Path: C:\...ents and Settings\Bioanalyzer\2013-07-08\2013-07-08\_007.xad

Created: 7/8/2013 4:17:01 PM  
 Modified: 7/8/2013 4:59:46 PM

**Electropherogram Summary Continued ...**



**Overall Results for sample 7 : MK10 cDNA Lib 1:6**

Number of peaks found: 24                      Corr. Area 1: 2,206.6  
 Noise: 0.2

**Peak table for sample 7 : MK10 cDNA Lib 1:6**

Peak	Size [bp]	Conc. [pg/μl]	Molarity [pmol/l]	Observations
1	35	125.00	5,411.3	Lower Marker
2	274	541.15	2,988.1	
3	282	160.48	863.4	
4	289	249.87	1,310.8	
5	304	409.12	2,036.8	
6	318	237.98	1,134.1	
7	333	526.35	2,392.6	
8	383	136.03	538.2	
9	403	81.49	306.6	
10	419	193.87	701.7	
11	496	41.77	127.5	
12	518	26.22	76.7	
13	535	21.86	61.9	
14	561	31.27	84.5	
15	588	43.35	111.8	
16	595	25.44	64.8	
17	616	23.53	57.8	
18	651	35.54	82.8	
19	696	46.39	101.0	
20	801	80.37	151.9	
21	1,122	30.03	40.5	
22	1,446	6.82	7.1	
23	1,855	4.92	4.0	
24	3,082	2.56	1.3	
25	10,380	75.00	10.9	Upper Marker
26	12,891	0.00	0.0	

Assay Class: High Sensitivity DNA Assay  
Data Path: C:\...ents and Settings\Bioanalyzer\2013-07-08\2013-07-08\_007.xad

Created: 7/8/2013 4:17:01 PM  
Modified: 7/8/2013 4:59:46 PM

**Electropherogram Summary Continued ...**

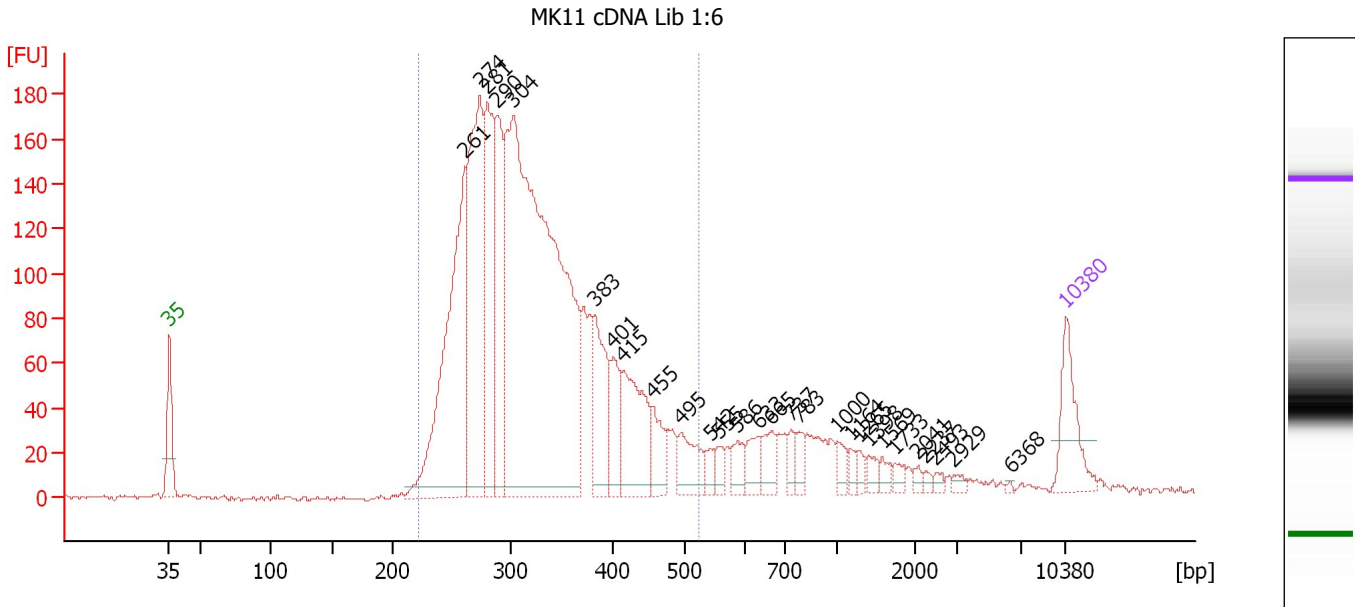
... Region table for sample 7 : MK10 cDNA Lib 1:6

From [bp]	To [bp]	Average Size [bp]	Molarity [pmol/l]	Conc. [pg/μl]	Corr. Area	% of Total	Size distribution in CV [%]	Color
230	493	333	12,409.1	2,622.77	2,206.6	81	17.6	■

Assay Class: High Sensitivity DNA Assay  
 Data Path: C:\...ents and Settings\Bioanalyzer\2013-07-08\2013-07-08\_007.xad

Created: 7/8/2013 4:17:01 PM  
 Modified: 7/8/2013 4:59:46 PM

**Electropherogram Summary Continued ...**



**Overall Results for sample 8 : MK11 cDNA Lib 1:6**

Number of peaks found: 28                      Corr. Area 1: 2,750.8  
 Noise: 0.9

**Peak table for sample 8 : MK11 cDNA Lib 1:6**

Peak	Size [bp]	Conc. [pg/μl]	Molarity [pmol/l]	Observations
1	35	125.00	5,411.3	Lower Marker
2	261	529.64	3,069.1	
3	274	436.85	2,411.3	
4	281	286.04	1,543.7	
5	290	210.77	1,102.7	
6	304	1,366.02	6,817.1	
7	383	148.94	589.1	
8	401	78.99	298.2	
9	415	159.08	580.9	
10	455	61.08	203.5	
11	495	67.54	206.6	
12	542	17.31	48.4	
13	555	20.14	55.0	
14	586	29.89	77.3	
15	633	36.51	87.4	
16	665	35.04	79.9	
17	737	21.48	44.2	
18	783	20.74	40.1	
19	1,000	19.72	29.9	
20	1,164	12.57	16.4	
21	1,265	10.61	12.7	
22	1,398	14.02	15.2	
23	1,569	12.65	12.2	
24	1,733	11.17	9.8	
25	2,041	6.81	5.1	
26	2,237	5.94	4.0	

Assay Class: High Sensitivity DNA Assay  
 Data Path: C:\...ents and Settings\Bioanalyzer\2013-07-08\2013-07-08\_007.xad


Created: 7/8/2013 4:17:01 PM  
 Modified: 7/8/2013 4:59:46 PM

### Electropherogram Summary Continued ...

#### ... Peak table for sample 8 : MK11 cDNA Lib 1:6

Peak	Size [bp]	Conc. [pg/μl]	Molarity [pmol/l]	Observations
27	2,493	6.44	3.9	
28	2,929	7.30	3.8	
29	6,368	2.11	0.5	
30	10,380	75.00	10.9	Upper Marker

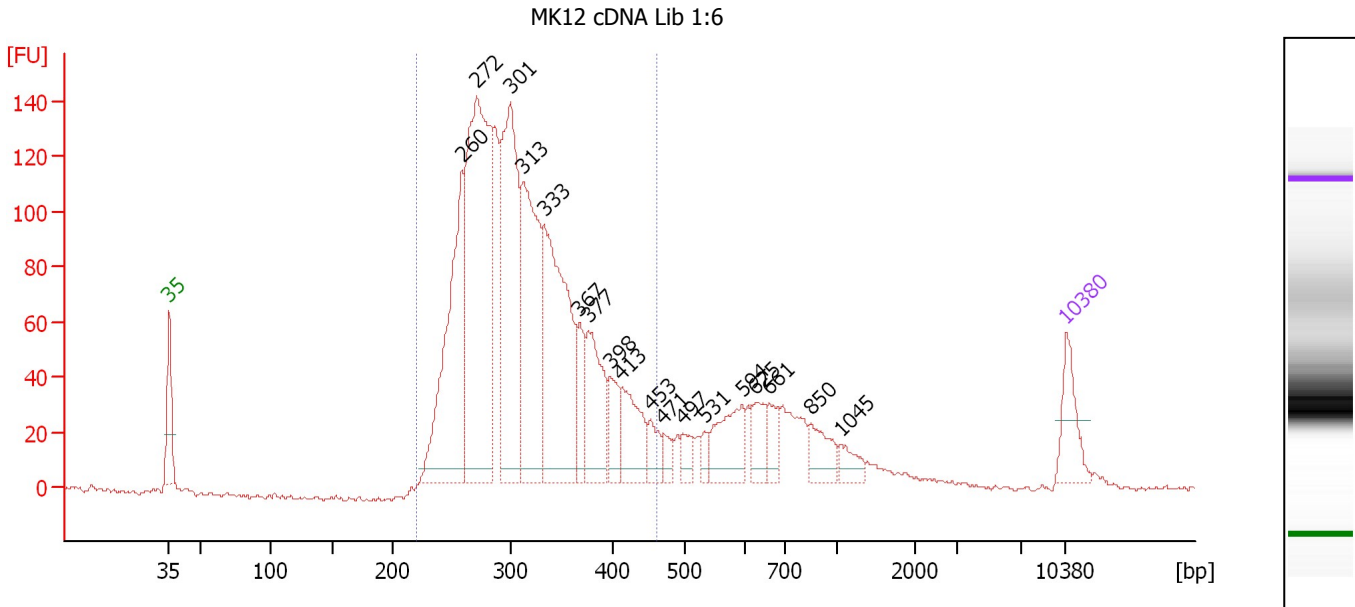
#### Region table for sample 8 : MK11 cDNA Lib 1:6

From [bp]	To [bp]	Average Size [bp]	Molarity [pmol/l]	Conc. [pg/μl]	Corr. Area	% of Total	Size distribution in CV [%]	Color
223	524	327	16,538.0	3,406.79	2,750.8	84	19.4	

Assay Class: High Sensitivity DNA Assay  
 Data Path: C:\...ents and Settings\Bioanalyzer\2013-07-08\2013-07-08\_007.xad

Created: 7/8/2013 4:17:01 PM  
 Modified: 7/8/2013 4:59:46 PM

**Electropherogram Summary Continued ...**



**Overall Results for sample 9 : MK12 cDNA Lib 1:6**

Number of peaks found: 18                      Corr. Area 1: 1,928.6  
 Noise: 1.0

**Peak table for sample 9 : MK12 cDNA Lib 1:6**

Peak	Size [bp]	Conc. [pg/μl]	Molarity [pmol/l]	Observations
1	35	125.00	5,411.3	Lower Marker
2	260	536.54	3,132.5	
3	272	865.98	4,821.6	
4	301	597.79	3,013.2	
5	313	468.13	2,264.3	
6	333	558.92	2,542.0	
7	367	87.36	360.2	
8	377	200.86	808.3	
9	398	79.15	301.6	
10	413	138.03	506.6	
11	453	51.38	171.9	
12	471	32.09	103.3	
13	497	37.57	114.5	
14	531	23.14	66.0	
15	594	126.38	322.1	
16	625	59.09	143.3	
17	661	52.59	120.5	
18	850	69.88	124.5	
19	1,045	36.24	52.6	
20	10,380	75.00	10.9	Upper Marker

**Region table for sample 9 : MK12 cDNA Lib 1:6**

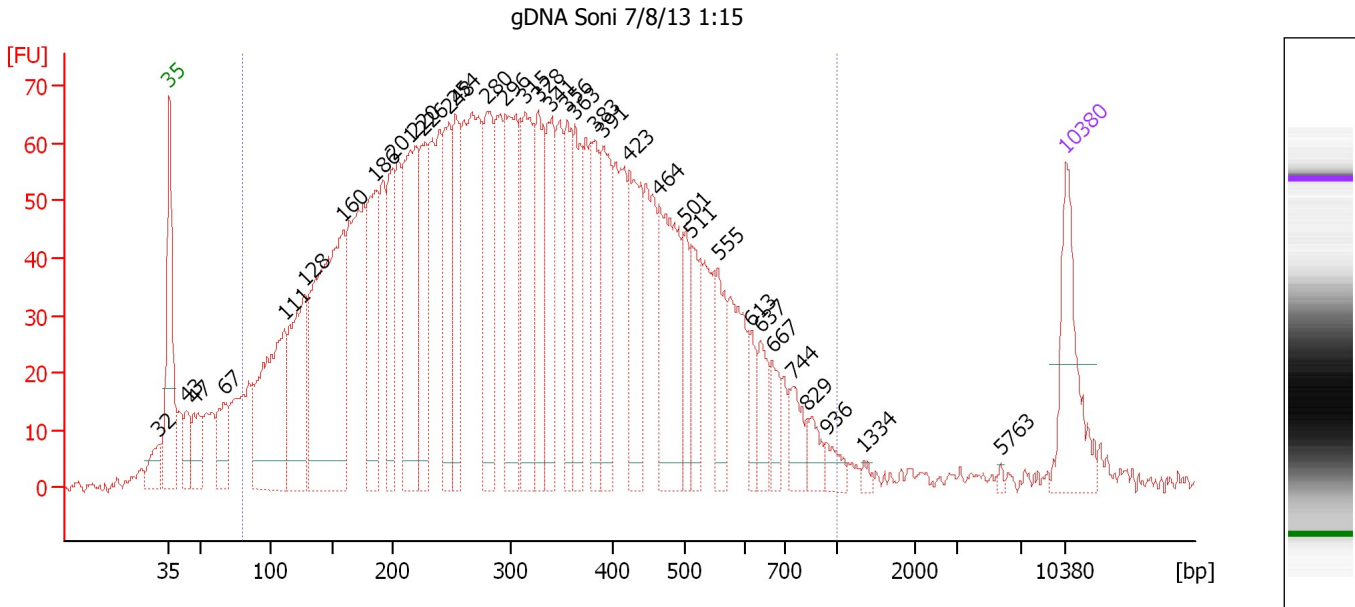
From [bp]	To [bp]	Average Size [bp]	Molarity [pmol/l]	Conc. [pg/μl]	Corr. Area	% of Total	Size distribution in CV [%]	Color
221	462	315	19,023.0	3,827.44	1,928.6	83	16.1	Blue



Assay Class: High Sensitivity DNA Assay  
 Data Path: C:\...ents and Settings\Bioanalyzer\2013-07-08\2013-07-08\_007.xad

Created: 7/8/2013 4:17:01 PM  
 Modified: 7/8/2013 4:59:46 PM

**Electropherogram Summary Continued ...**



**Overall Results for sample 10 : gDNA Soni 7/8/13 1:15**

Number of peaks found: 35                      Corr. Area 1: 3,036.6  
 Noise: 1.2

**Peak table for sample 10 : gDNA Soni 7/8/13 1:15**

Peak	Size [bp]	Conc. [pg/μl]	Molarity [pmol/l]	Observations
1	32	0.00	0.0	
2	35	125.00	5,411.3	Lower Marker
3	43	40.14	1,402.2	
4	47	49.67	1,597.9	
5	67	61.25	1,388.1	
6	111	233.74	3,182.4	
7	128	179.63	2,131.7	
8	160	402.42	3,822.2	
9	186	140.36	1,144.0	
10	201	103.08	777.4	
11	220	210.03	1,446.7	
12	226	114.12	765.8	
13	248	129.24	789.6	
14	254	113.35	676.6	
15	280	146.55	792.2	
16	296	177.33	907.2	
17	315	161.98	779.0	
18	328	108.61	502.0	
19	341	117.13	521.1	
20	356	81.12	344.9	
21	363	101.65	424.3	
22	383	84.12	332.8	
23	391	112.48	436.0	
24	423	113.60	406.7	
25	464	156.10	509.3	
26	501	51.46	155.8	

Assay Class: High Sensitivity DNA Assay  
 Data Path: C:\...ents and Settings\Bioanalyzer\2013-07-08\2013-07-08\_007.xad


Created: 7/8/2013 4:17:01 PM  
 Modified: 7/8/2013 4:59:46 PM

**Electropherogram Summary Continued ...**

**... Peak table for sample 10 : gDNA Soni 7/8/13 1:15**

Peak	Size [bp]	Conc. [pg/µl]	Molarity [pmol/l]	Observations
27	511	57.68	171.1	
28	555	57.71	157.6	
29	613	24.77	61.3	
30	637	35.13	83.6	
31	667	26.10	59.3	
32	744	31.11	63.4	
33	829	21.53	39.3	
34	936	15.47	25.0	
35	1,334	4.65	5.3	
36	5,763	2.41	0.6	
37	▶ 10,380	75.00	10.9	Upper Marker

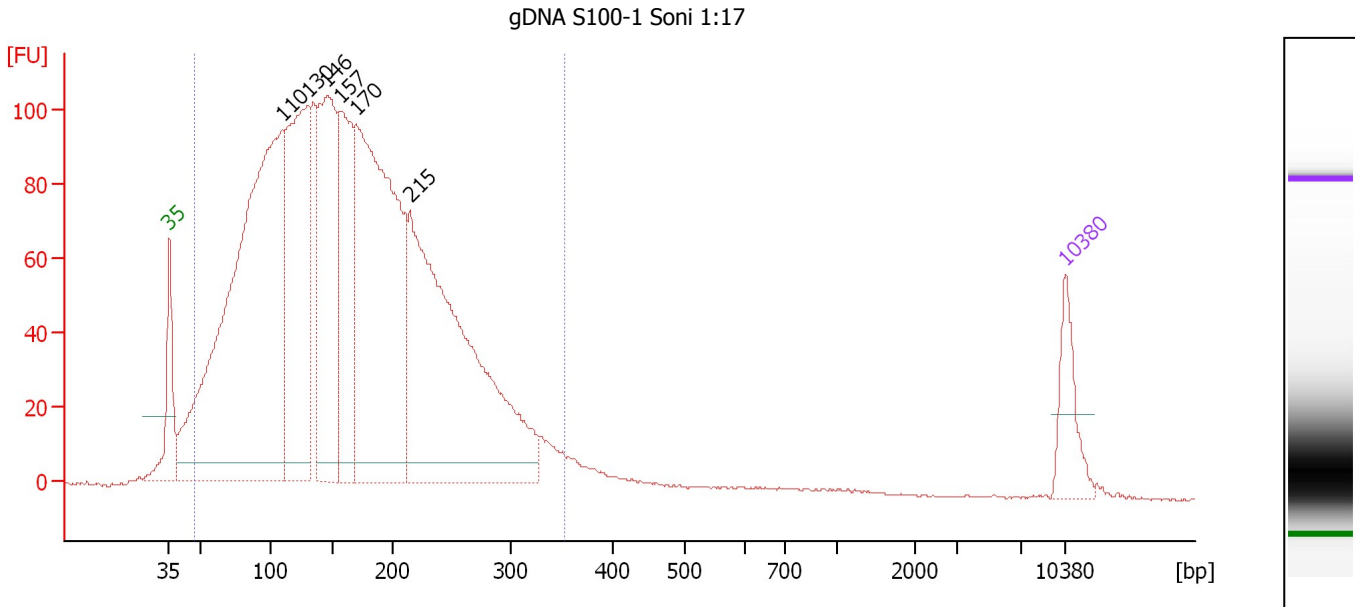
**Region table for sample 10 : gDNA Soni 7/8/13 1:15**

From [bp]	To [bp]	Average Size [bp]	Molarity [pmol/l]	Conc. [pg/µl]	Corr. Area	% of Total	Size distribution in CV [%]	Color
80	1,000	334	32,830.5	5,019.81	3,036.6	92	47.1	

Assay Class: High Sensitivity DNA Assay  
 Data Path: C:\...ents and Settings\Bioanalyzer\2013-07-08\2013-07-08\_007.xad

Created: 7/8/2013 4:17:01 PM  
 Modified: 7/8/2013 4:59:46 PM

**Electropherogram Summary Continued ...**



**Overall Results for sample 11 : gDNA S100-1 Soni 1:17**

Number of peaks found: 6                      Corr. Area 1: 3,100.2  
 Noise: 0.2

**Peak table for sample 11 : gDNA S100-1 Soni 1:17**

Peak	Size [bp]	Conc. [pg/μl]	Molarity [pmol/l]	Observations
1	35	125.00	5,411.3	Lower Marker
2	110	1,816.80	25,109.6	
3	130	748.77	8,705.5	
4	146	597.08	6,181.3	
5	157	386.12	3,731.9	
6	170	1,160.24	10,351.9	
7	215	1,127.23	7,941.4	
8	10,380	75.00	10.9	Upper Marker

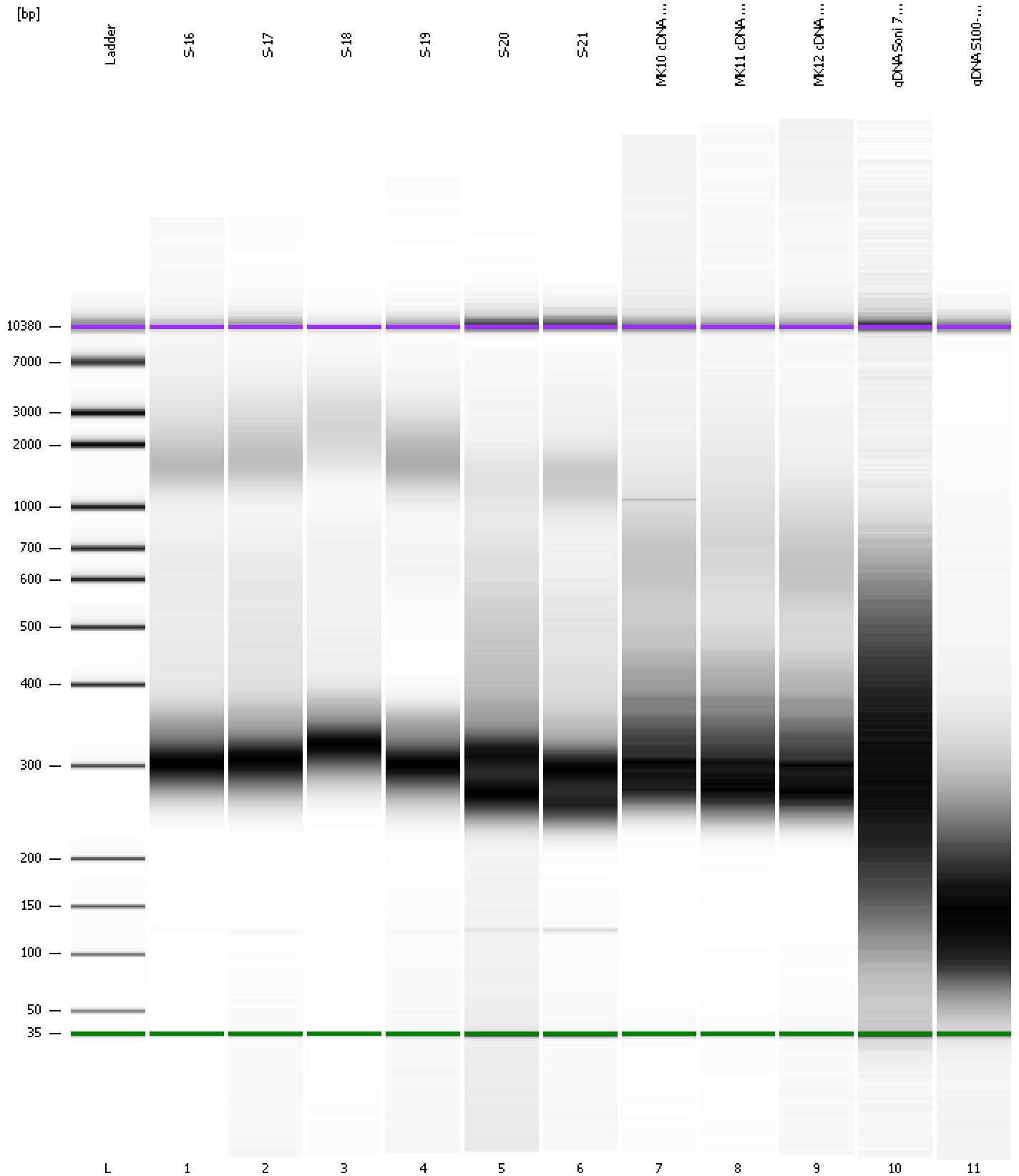
**Region table for sample 11 : gDNA S100-1 Soni 1:17**

From [bp]	To [bp]	Average Size [bp]	Molarity [pmol/l]	Conc. [pg/μl]	Corr. Area	% of Total	Size distribution in CV [%]	Color
48	354	165	71,288.8	6,109.69	3,100.2	96	40.8	Blue

Assay Class: High Sensitivity DNA Assay  
Data Path: C:\...ents and Settings\Bioanalyzer\2013-07-08\2013-07-08\_007.xad

Created: 7/8/2013 4:17:01 PM  
Modified: 7/8/2013 4:59:46 PM

**Gel Image**



Assay Class: High Sensitivity DNA Assay Created: 7/8/2013 4:17:01 PM  
 Data Path: C:\...ents and Settings\Bioanalyzer\2013-07-08\2013-07-08\_007.xad Modified: 7/8/2013 4:59:46 PM

**Run Logbook**

Description	Number	Source	Category	Sub Category	Time	Time Zone	User	Host
Run ended on port 1 (Number of wells acquired: 12)		Instrument	Run		7/8/2013 4:57:29 PM	(GMT --07:00) Pacific Standard Time	UC Davis	D8XSMGH1
Run started on port 1 (File: C:\Documents and Settings\Bioanalyzer\2013-07-08\2013-07-08_007.xad)		Instrument	Run		7/8/2013 4:17:06 PM	(GMT --07:00) Pacific Standard Time	UC Davis	D8XSMGH1
Product Number : G2938B		Instrument	Run		7/8/2013 4:17:06 PM	(GMT --07:00) Pacific Standard Time	UC Davis	D8XSMGH1
Name :		Instrument	Run		7/8/2013 4:17:06 PM	(GMT --07:00) Pacific Standard Time	UC Davis	D8XSMGH1
Vendor : Agilent Technologies		Instrument	Run		7/8/2013 4:17:06 PM	(GMT --07:00) Pacific Standard Time	UC Davis	D8XSMGH1
Serial# : DE13701086		Instrument	Run		7/8/2013 4:17:06 PM	(GMT --07:00) Pacific Standard Time	UC Davis	D8XSMGH1
Firmware : C.01.069		Instrument	Run		7/8/2013 4:17:06 PM	(GMT --07:00) Pacific Standard Time	UC Davis	D8XSMGH1
Cartridge : Electrode		Instrument	Run		7/8/2013 4:17:06 PM	(GMT --07:00) Pacific Standard Time	UC Davis	D8XSMGH1