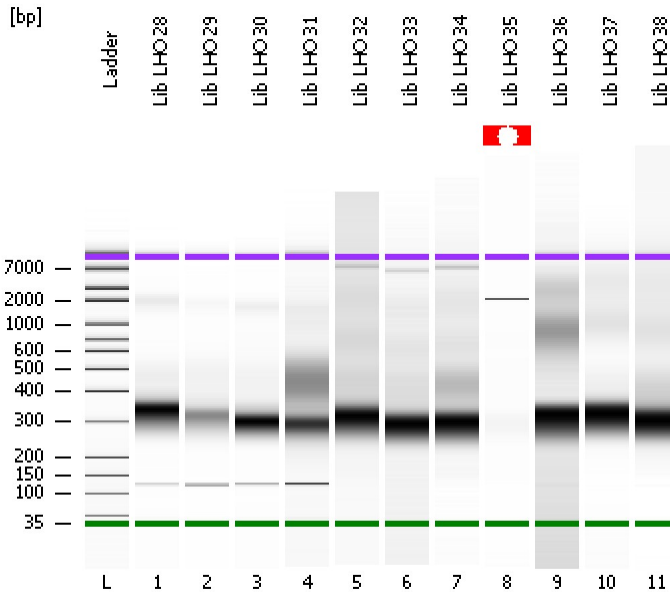


Assay Class: High Sensitivity DNA Assay
Data Path: C:\...ents and Settings\Bioanalyzer\2013-07-09\2013-07-09_001.xad

Created: 7/9/2013 12:19:29 PM
Modified: 7/9/2013 1:00:51 PM

Electrophoresis File Run Summary



Instrument Information:

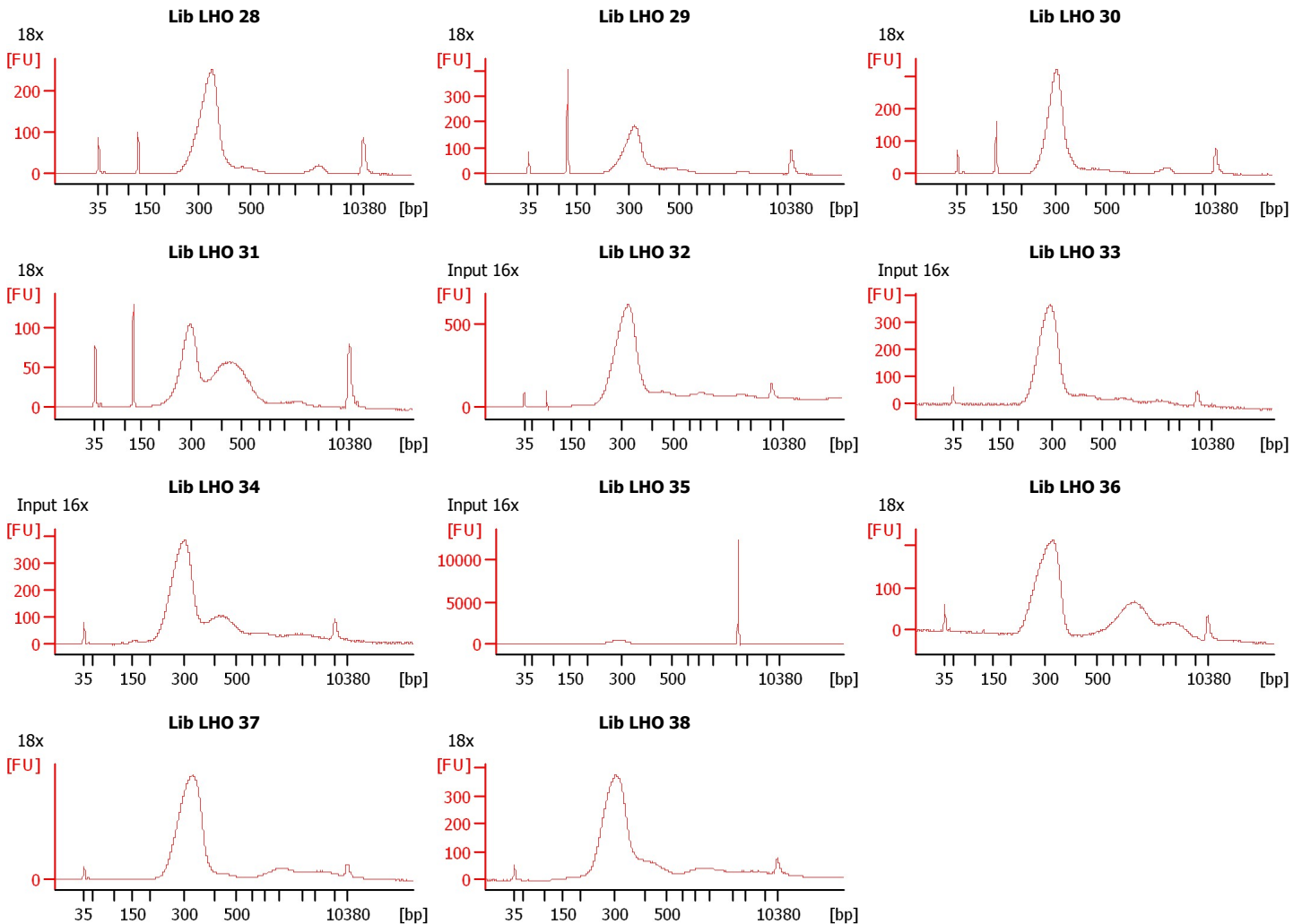
Instrument Name: DE13701086 Firmware: C.01.069
Serial#: DE13701086 Type: G2938B

Assay Information:

Assay Origin Path: C:\Program Files\Agilent\2100 bioanalyzer\2100 expert\assays\dsDNA\High Sensitivity DNA.xsy
Assay Class: High Sensitivity DNA Assay
Version: 1.03
Assay Comments: Copyright © 2003-2010 Agilent Technologies

Chip Information:

Chip Lot #: Reagent Kit Lot #: Chip Comments:



Assay Class: High Sensitivity DNA Assay
Data Path: C:\...ents and Settings\Bioanalyzer\2013-07-09\2013-07-09_001.xad

Created: 7/9/2013 12:19:29 PM
Modified: 7/9/2013 1:00:51 PM

Electrophoresis File Run Summary (Chip Summary)

Sample Name	Sample Comment	Rest. Digest	Status	Observation	Result Label	Result Color
Lib LHO 28	18x	<input type="checkbox"/>	✓			
Lib LHO 29	18x	<input type="checkbox"/>	✓			
Lib LHO 30	18x	<input type="checkbox"/>	✓			
Lib LHO 31	18x	<input type="checkbox"/>	✓			
Lib LHO 32	Input 16x	<input type="checkbox"/>	✓			
Lib LHO 33	Input 16x	<input type="checkbox"/>	✓			
Lib LHO 34	Input 16x	<input type="checkbox"/>	✓			
Lib LHO 35	Input 16x	<input type="checkbox"/>	⚠			
Lib LHO 36	18x	<input type="checkbox"/>	✓			
Lib LHO 37	18x	<input type="checkbox"/>	✓			
Lib LHO 38	18x	<input type="checkbox"/>	✓			
Ladder		<input type="checkbox"/>	✓			

Chip Lot #

Reagent Kit Lot #

Chip Comments :

Assay Class: High Sensitivity DNA Assay
Data Path: C:\...ents and Settings\Bioanalyzer\2013-07-09\2013-07-09_001.xad

Created: 7/9/2013 12:19:29 PM
Modified: 7/9/2013 1:00:51 PM

Electrophoresis Assay Details

General Analysis Settings

Number of Available Sample and Ladder Wells (Max.) : 12
Minimum Visible Range [s] : 32
Maximum Visible Range [s] : 138
Start Analysis Time Range [s] : 33
End Analysis Time Range [s] : 137.5
Ladder Concentration [pg/μl] : 1950
Uses Standard Area for Ladder Fragments
Lower Marker Concentration [pg/μl] : 125
Upper Marker Concentration [pg/μl] : 75
Used Upper Marker for Quantitation
Standard Curve Fit is Point to Point
Show Data Aligned to Lower and Upper Marker

Integrator Settings

Integration Start Time [s] : 33.05
Integration End Time [s] : 137
Slope Threshold : 0.8
Height Threshold [FU] : 5
Area Threshold : 0.1
Width Threshold [s] : 0.6
Baseline Plateau [s] : 0.5

Filter Settings

Filter Width [s] : 0.5
Polynomial Order : 4

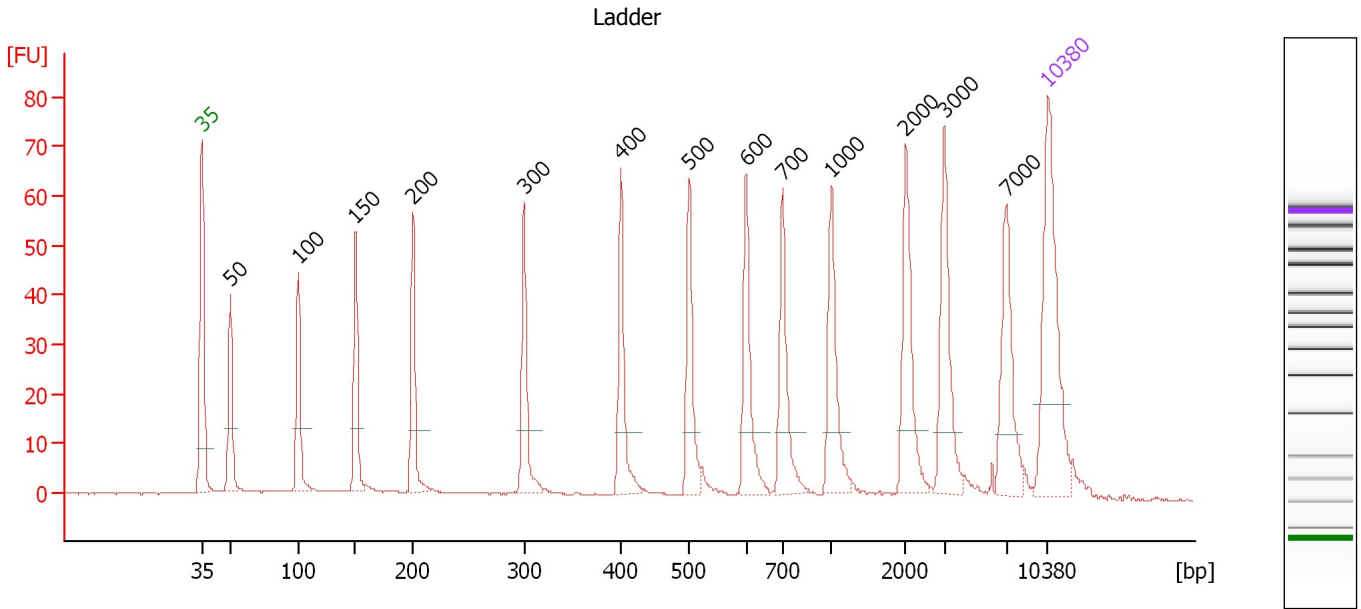
Ladder

Ladder Peak	Size	Area
1	35	160
2	50	210
3	100	208
4	150	221
5	200	242
6	300	270
7	400	305
8	500	306
9	600	336
10	700	321
11	1000	366
12	2000	413
13	3000	411
14	7000	400
15	10380	214

Assay Class: High Sensitivity DNA Assay
 Data Path: C:\...ents and Settings\Bioanalyzer\2013-07-09\2013-07-09_001.xad

Created: 7/9/2013 12:19:29 PM
 Modified: 7/9/2013 1:00:51 PM

Electropherogram Summary



Overall Results for Ladder

Noise: 0.2

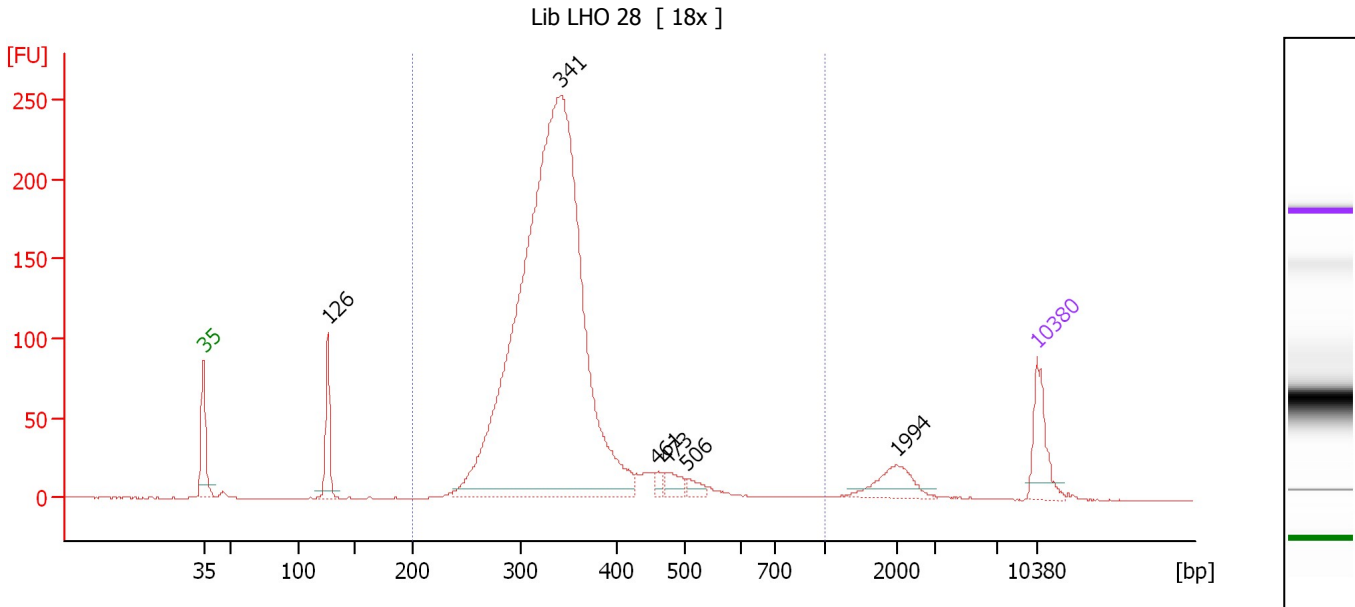
Peak table for Ladder

Peak	Size [bp]	Conc. [pg/μl]	Molarity [pmol/l]	Observations
1	35	125.00	5,411.3	Lower Marker
2	50	150.00	4,545.5	Ladder Peak
3	100	150.00	2,272.7	Ladder Peak
4	150	150.00	1,515.2	Ladder Peak
5	200	150.00	1,136.4	Ladder Peak
6	300	150.00	757.6	Ladder Peak
7	400	150.00	568.2	Ladder Peak
8	500	150.00	454.5	Ladder Peak
9	600	150.00	378.8	Ladder Peak
10	700	150.00	324.7	Ladder Peak
11	1,000	150.00	227.3	Ladder Peak
12	2,000	150.00	113.6	Ladder Peak
13	3,000	150.00	75.8	Ladder Peak
14	7,000	150.00	32.5	Ladder Peak
15	10,380	75.00	10.9	Upper Marker

Assay Class: High Sensitivity DNA Assay
 Data Path: C:\...ents and Settings\Bioanalyzer\2013-07-09\2013-07-09_001.xad

Created: 7/9/2013 12:19:29 PM
 Modified: 7/9/2013 1:00:51 PM

Electropherogram Summary Continued ...



Overall Results for sample 1 : Lib LHO 28

Number of peaks found: 6 Corr. Area 1: 2,361.0
 Noise: 0.2

Peak table for sample 1 : Lib LHO 28

Peak	Size [bp]	Conc. [pg/μl]	Molarity [pmol/l]	Observations
1	35	125.00	5,411.3	Lower Marker
2	126	131.92	1,587.5	
3	341	2,599.22	11,563.7	
4	461	13.84	45.5	
5	473	33.08	105.9	
6	506	21.20	63.5	
7	1,994	60.18	45.7	
8	10,380	75.00	10.9	Upper Marker

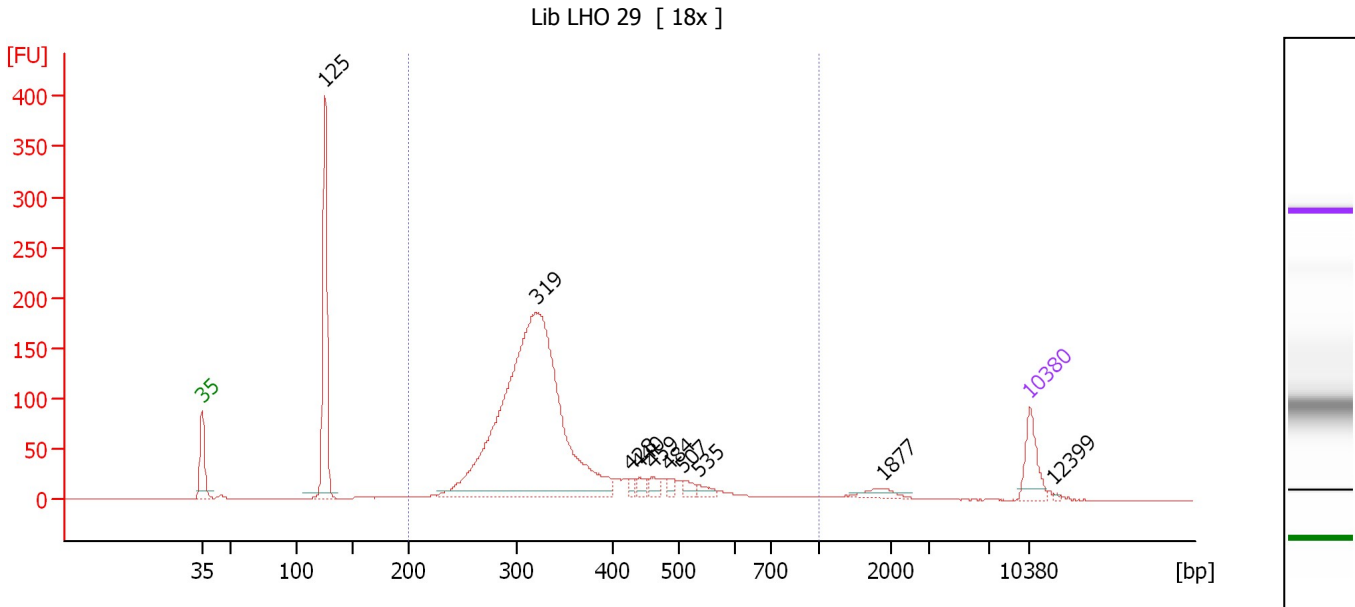
Region table for sample 1 : Lib LHO 28

From [bp]	To [bp]	Average Size [bp]	Molarity [pmol/l]	Conc. [pg/μl]	Corr. Area	% of Total	Size distribution in CV [%]	Color
200	1,000	343	13,045.7	2,859.33	2,361.0	93	18.5	Blue

Assay Class: High Sensitivity DNA Assay
 Data Path: C:\...ents and Settings\Bioanalyzer\2013-07-09\2013-07-09_001.xad

Created: 7/9/2013 12:19:29 PM
 Modified: 7/9/2013 1:00:51 PM

Electropherogram Summary Continued ...



Overall Results for sample 2 : Lib LHO 29

Number of peaks found: 10 Corr. Area 1: 1,866.8
 Noise: 0.2

Peak table for sample 2 : Lib LHO 29

Peak	Size [bp]	Conc. [pg/µl]	Molarity [pmol/l]	Observations
1	35	125.00	5,411.3	Lower Marker
2	125	522.77	6,323.8	
3	319	1,892.67	8,987.9	
4	428	15.09	53.4	
5	440	26.17	90.2	
6	459	27.13	89.6	
7	484	19.59	61.4	
8	507	24.19	72.3	
9	535	19.15	54.2	
10	1,877	23.87	19.3	
11	10,380	75.00	10.9	Upper Marker
12	12,399	0.00	0.0	

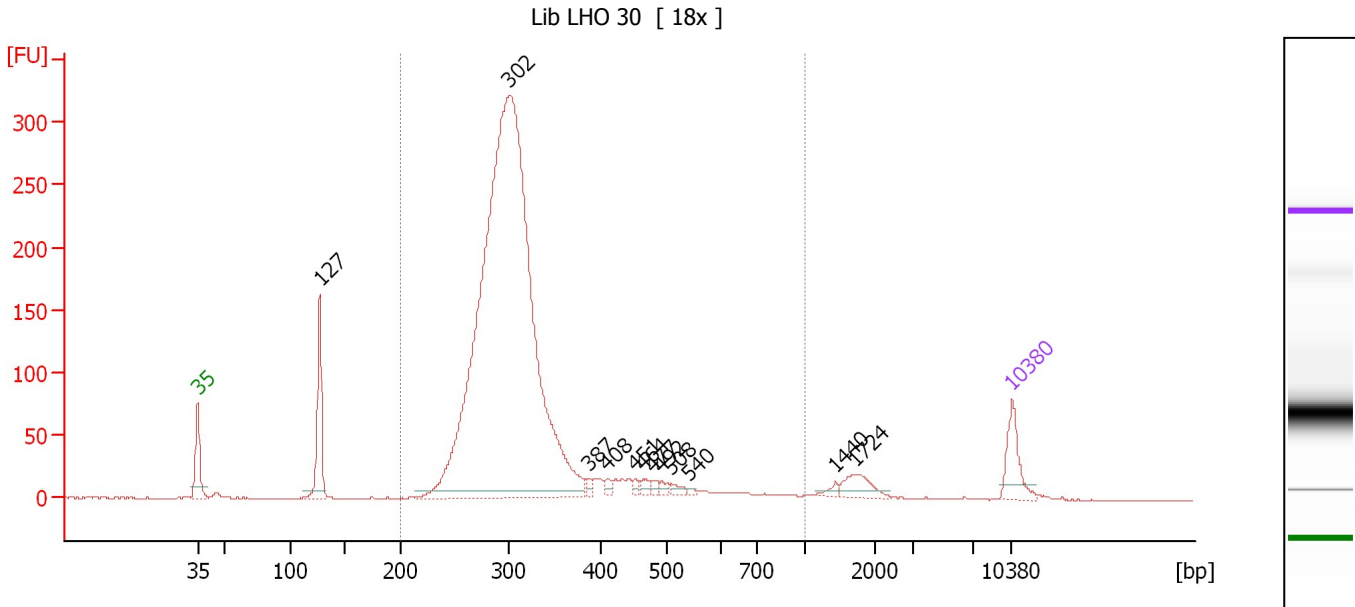
Region table for sample 2 : Lib LHO 29

From [bp]	To [bp]	Average Size [bp]	Molarity [pmol/l]	Conc. [pg/µl]	Corr. Area	% of Total	Size distribution in CV [%]	Color
200	1,000	345	10,695.0	2,293.07	1,866.8	81	26.0	Blue

Assay Class: High Sensitivity DNA Assay
 Data Path: C:\...ents and Settings\Bioanalyzer\2013-07-09\2013-07-09_001.xad

Created: 7/9/2013 12:19:29 PM
 Modified: 7/9/2013 1:00:51 PM

Electropherogram Summary Continued ...



Overall Results for sample 3 : Lib LHO 30

Number of peaks found: 12 Corr. Area 1: 2,692.3
 Noise: 0.2

Peak table for sample 3 : Lib LHO 30

Peak	Size [bp]	Conc. [pg/μl]	Molarity [pmol/l]	Observations
1	35	125.00	5,411.3	Lower Marker
2	127	246.71	2,953.5	
3	302	3,455.89	17,339.5	
4	387	13.87	54.3	
5	408	15.36	57.0	
6	451	12.92	43.4	
7	464	15.34	50.0	
8	477	14.20	45.1	
9	492	12.58	38.8	
10	508	15.09	45.0	
11	540	5.53	15.5	
12	1,440	10.91	11.5	
13	1,724	48.73	42.8	
14	10,380	75.00	10.9	Upper Marker

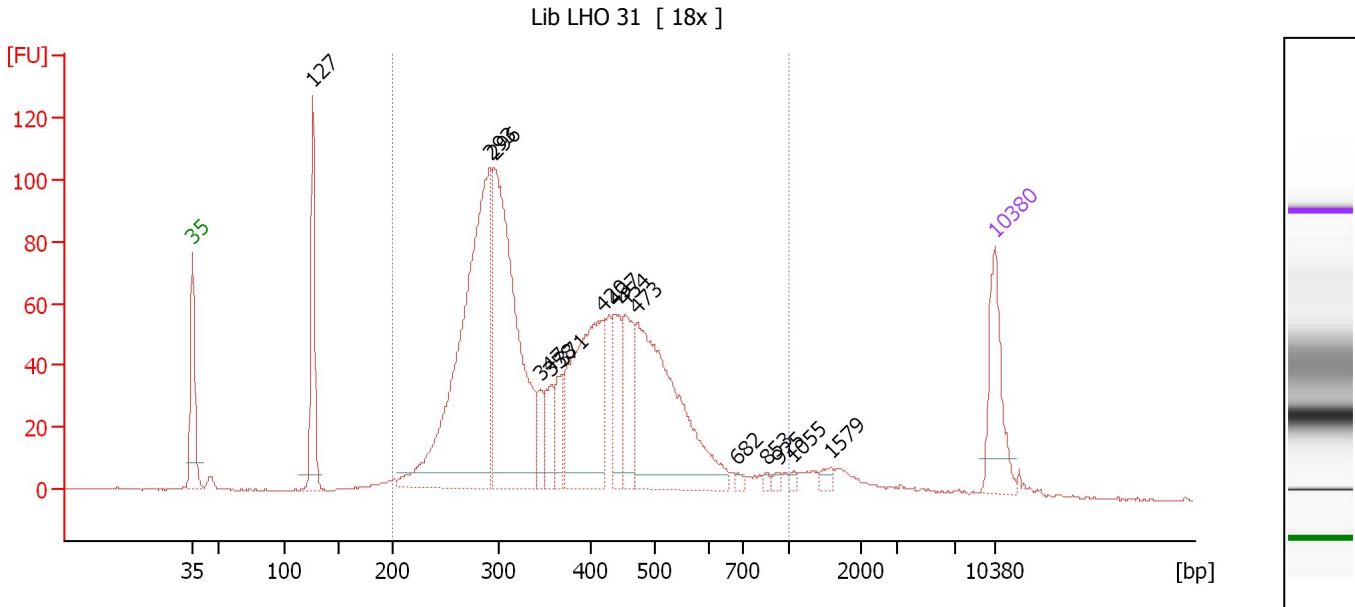
Region table for sample 3 : Lib LHO 30

From [bp]	To [bp]	Average Size [bp]	Molarity [pmol/l]	Conc. [pg/μl]	Corr. Area	% of Total	Size distribution in CV [%]	Color
200	1,000	321	18,847.4	3,811.51	2,692.3	91	24.6	Blue

Assay Class: High Sensitivity DNA Assay
 Data Path: C:\...ents and Settings\Bioanalyzer\2013-07-09\2013-07-09_001.xad

Created: 7/9/2013 12:19:29 PM
 Modified: 7/9/2013 1:00:51 PM

Electropherogram Summary Continued ...



Overall Results for sample 4 : Lib LHO 31

Number of peaks found: 15 Corr. Area 1: 1,762.6
 Noise: 0.2

Peak table for sample 4 : Lib LHO 31

Peak	Size [bp]	Conc. [pg/μl]	Molarity [pmol/l]	Observations
1	35	125.00	5,411.3	Lower Marker
2	127	173.52	2,074.9	
3	293	612.51	3,169.2	
4	296	466.74	2,386.1	
5	347	33.48	146.3	
6	358	44.03	186.4	
7	371	47.03	192.3	
8	420	267.86	966.6	
9	437	74.93	259.7	
10	454	87.83	292.8	
11	473	346.13	1,107.9	
12	682	4.66	10.3	
13	853	4.33	7.7	
14	925	4.98	8.1	
15	1,055	4.21	6.0	
16	1,579	8.92	8.6	
17	10,380	75.00	10.9	Upper Marker

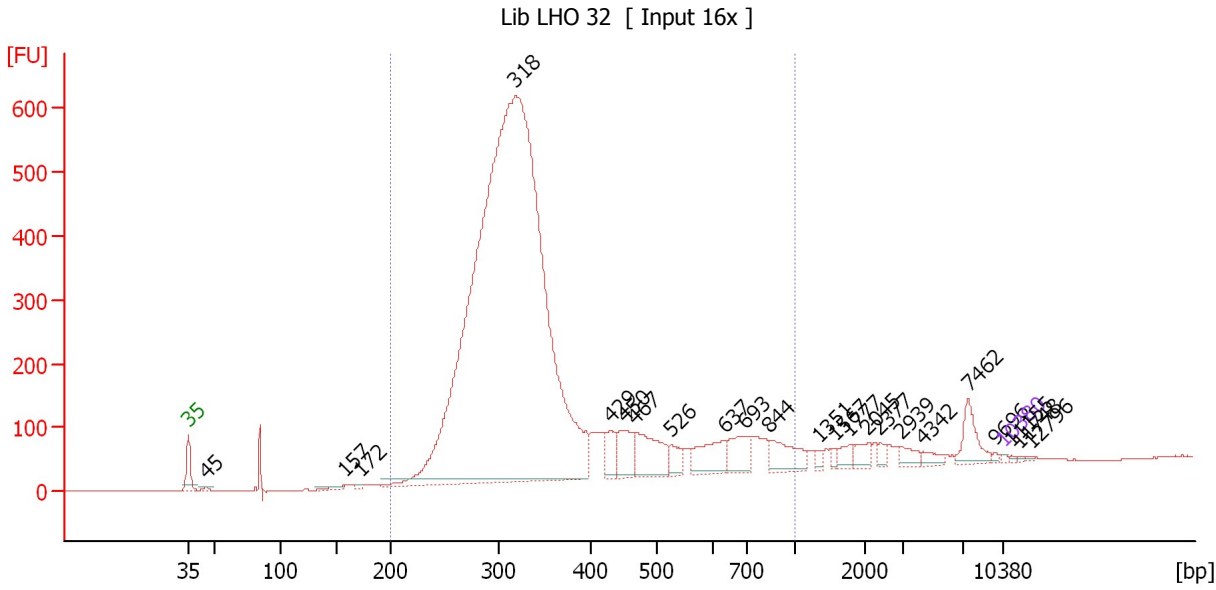
Region table for sample 4 : Lib LHO 31

From [bp]	To [bp]	Average Size [bp]	Molarity [pmol/l]	Conc. [pg/μl]	Corr. Area	% of Total	Size distribution in CV [%]	Color
200	1,000	387	9,721.5	2,216.44	1,762.6	88	31.4	Blue

Assay Class: High Sensitivity DNA Assay
 Data Path: C:\...ents and Settings\Bioanalyzer\2013-07-09\2013-07-09_001.xad

Created: 7/9/2013 12:19:29 PM
 Modified: 7/9/2013 1:00:51 PM

Electropherogram Summary Continued ...



Overall Results for sample 5 : Lib LHO 32

Number of peaks found: 23 Corr. Area 1: 7,140.1
 Noise: 0.2

Peak table for sample 5 : Lib LHO 32

Peak	Size [bp]	Conc. [pg/μl]	Molarity [pmol/l]	Observations
1	35	125.00	5,411.3	Lower Marker
2	45	186.12	6,308.7	
3	157	280.27	2,703.5	
4	172	138.85	1,223.3	
5	318	92,445.54	440,525.3	
6	429	1,355.69	4,792.6	
7	450	1,847.51	6,224.8	
8	467	2,969.10	9,638.6	
9	526	826.97	2,381.1	
10	637	2,126.87	5,061.9	
11	693	1,596.59	3,490.0	
12	844	1,777.28	3,190.7	
13	1,351	222.49	249.6	
14	1,567	226.03	218.5	
15	1,777	506.09	431.6	
16	2,045	591.83	438.5	
17	2,377	305.50	194.8	
18	2,939	493.22	254.3	
19	4,342	376.54	131.4	
20	7,462	1,294.31	262.8	
21	9,696	90.32	14.1	
22	10,380	75.00	10.9	Upper Marker
23	11,155	0.00	0.0	
24	11,748	0.00	0.0	
25	12,796	0.00	0.0	

Assay Class: High Sensitivity DNA Assay
Data Path: C:\...ents and Settings\Bioanalyzer\2013-07-09\2013-07-09_001.xad

Created: 7/9/2013 12:19:29 PM
Modified: 7/9/2013 1:00:51 PM

Electropherogram Summary Continued ...

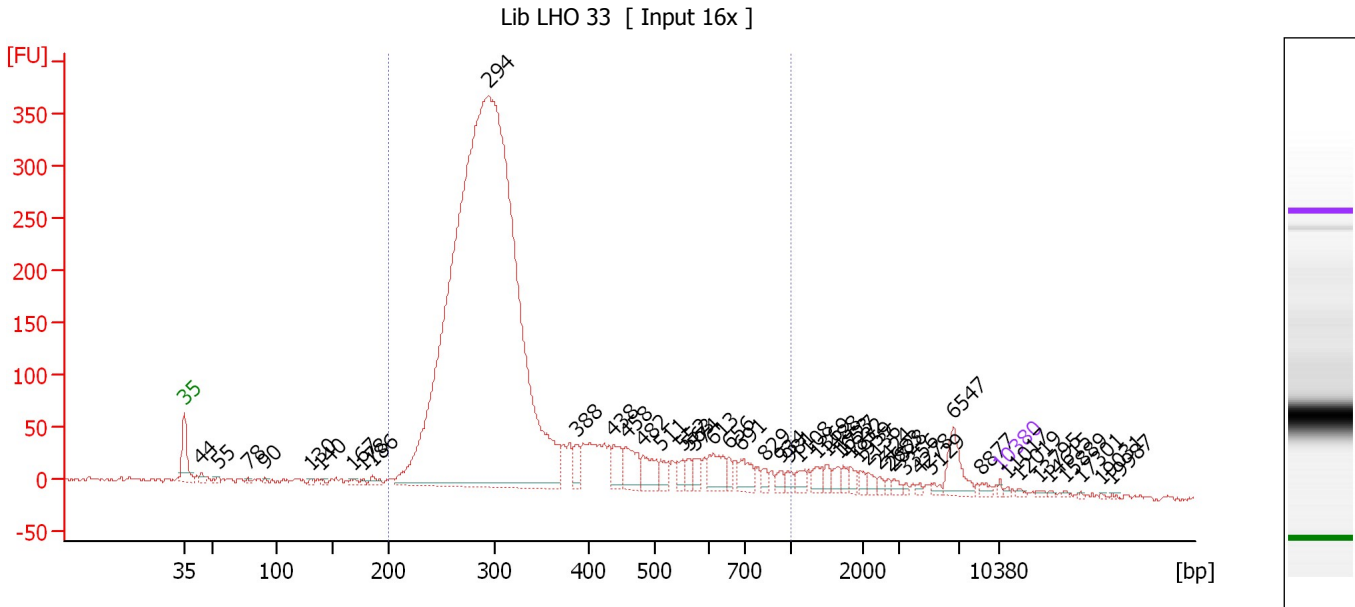
... Region table for sample 5 : Lib LHO 32

From [bp]	To [bp]	Average Size [bp]	Molarity [pmol/l]	Conc. [pg/μl]	Corr. Area	% of Total	Size distribution in CV [%]	Color
200	1,000	359	485,650.8	104,576.60	7,140.1	93	34.7	■

Assay Class: High Sensitivity DNA Assay
 Data Path: C:\...ents and Settings\Bioanalyzer\2013-07-09\2013-07-09_001.xad

Created: 7/9/2013 12:19:29 PM
 Modified: 7/9/2013 1:00:51 PM

Electropherogram Summary Continued ...



Overall Results for sample 6 : Lib LHO 33

Number of peaks found: 48 Corr. Area 1: 4,508.1
 Noise: 2.3

Peak table for sample 6 : Lib LHO 33

Peak	Size [bp]	Conc. [pg/μl]	Molarity [pmol/l]	Observations
1	35	125.00	5,411.3	Lower Marker
2	44	221.15	7,547.6	
3	55	125.26	3,461.9	
4	78	86.42	1,689.2	
5	90	102.16	1,710.7	
6	130	109.48	1,277.9	
7	140	108.79	1,181.6	
8	167	149.02	1,348.4	
9	178	91.08	775.2	
10	186	278.64	2,267.6	
11	294	67,406.08	347,536.1	
12	388	581.49	2,269.7	
13	438	854.85	2,955.2	
14	458	1,120.86	3,710.1	
15	482	972.46	3,056.6	
16	511	489.77	1,450.8	
17	552	407.08	1,117.0	
18	563	322.26	867.5	
19	574	424.61	1,121.7	
20	613	924.51	2,284.1	
21	656	323.13	746.4	
22	691	707.29	1,550.7	
23	829	220.67	403.3	
24	934	236.48	383.7	
25	981	239.14	369.3	
26	1,108	323.81	442.9	

Assay Class: High Sensitivity DNA Assay
 Data Path: C:\...ents and Settings\Bioanalyzer\2013-07-09\2013-07-09_001.xad


Created: 7/9/2013 12:19:29 PM
 Modified: 7/9/2013 1:00:51 PM

Electropherogram Summary Continued ...

... Peak table for sample 6 : Lib LHO 33

Peak	Size [bp]	Conc. [pg/µl]	Molarity [pmol/l]	Observations
27	1,369	331.23	366.6	
28	1,488	229.17	233.3	
29	1,653	245.74	225.3	
30	1,727	188.64	165.5	
31	1,832	215.93	178.6	
32	1,959	177.26	137.1	
33	2,136	193.81	137.5	
34	2,424	133.58	83.5	
35	2,683	98.34	55.5	
36	2,828	128.27	68.7	
37	3,356	76.30	34.5	
38	4,278	74.47	26.4	
39	5,129	117.00	34.6	
40	6,547	995.13	230.3	
41	8,877	130.57	22.3	
42	10,380	75.00	10.9	Upper Marker
43	11,017	0.00	0.0	
44	12,019	0.00	0.0	
45	13,795	0.00	0.0	
46	14,615	0.00	0.0	
47	15,889	0.00	0.0	
48	17,301	0.00	0.0	
49	19,031	0.00	0.0	
50	19,987	0.00	0.0	

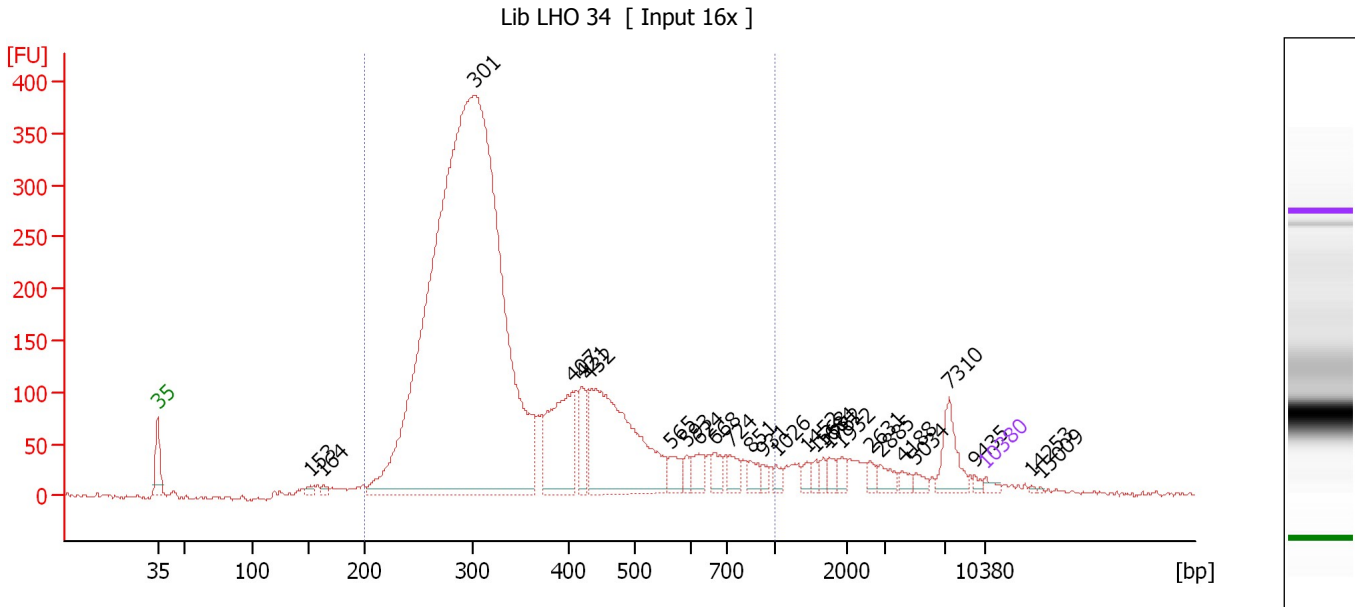
Region table for sample 6 : Lib LHO 33

From [bp]	To [bp]	Average Size [bp]	Molarity [pmol/l]	Conc. [pg/µl]	Corr. Area	% of Total	Size distribution in CV [%]	Color
200	1,000	342	395,536.0	80,256.98	4,508.1	90	36.7	

Assay Class: High Sensitivity DNA Assay
 Data Path: C:\...ents and Settings\Bioanalyzer\2013-07-09\2013-07-09_001.xad

Created: 7/9/2013 12:19:29 PM
 Modified: 7/9/2013 1:00:51 PM

Electropherogram Summary Continued ...



Overall Results for sample 7 : Lib LHO 34

Number of peaks found: 27 Corr. Area 1: 5,535.1
 Noise: 1.8

Peak table for sample 7 : Lib LHO 34

Peak	Size [bp]	Conc. [pg/μl]	Molarity [pmol/l]	Observations
1	35	125.00	5,411.3	Lower Marker
2	153	85.37	847.3	
3	164	86.49	800.9	
4	301	28,288.41	142,406.6	
5	407	1,989.74	7,404.5	
6	421	602.87	2,171.7	
7	432	3,811.61	13,383.1	
8	565	303.83	814.9	
9	593	148.93	380.5	
10	624	322.50	783.2	
11	668	241.66	548.0	
12	724	247.83	518.5	
13	851	220.09	392.1	
14	931	99.44	161.8	
15	1,026	118.02	174.2	
16	1,452	123.63	129.0	
17	1,568	106.07	102.5	
18	1,684	102.68	92.4	
19	1,762	133.69	115.0	
20	1,932	138.14	108.3	
21	2,631	122.02	70.3	
22	2,885	181.97	95.6	
23	4,188	108.76	39.3	
24	5,034	104.76	31.5	
25	7,310	571.44	118.4	
26	9,435	53.62	8.6	

Assay Class: High Sensitivity DNA Assay
Data Path: C:\...ents and Settings\Bioanalyzer\2013-07-09\2013-07-09_001.xad

Created: 7/9/2013 12:19:29 PM
Modified: 7/9/2013 1:00:51 PM

Electropherogram Summary Continued ...**... Peak table for sample 7 : Lib LHO 34**

Peak	Size [bp]	Conc. [pg/ μ l]	Molarity [pmol/l]	Observations
27	10,380	75.00	10.9	Upper Marker
28	14,253	0.00	0.0	
29	15,009	0.00	0.0	

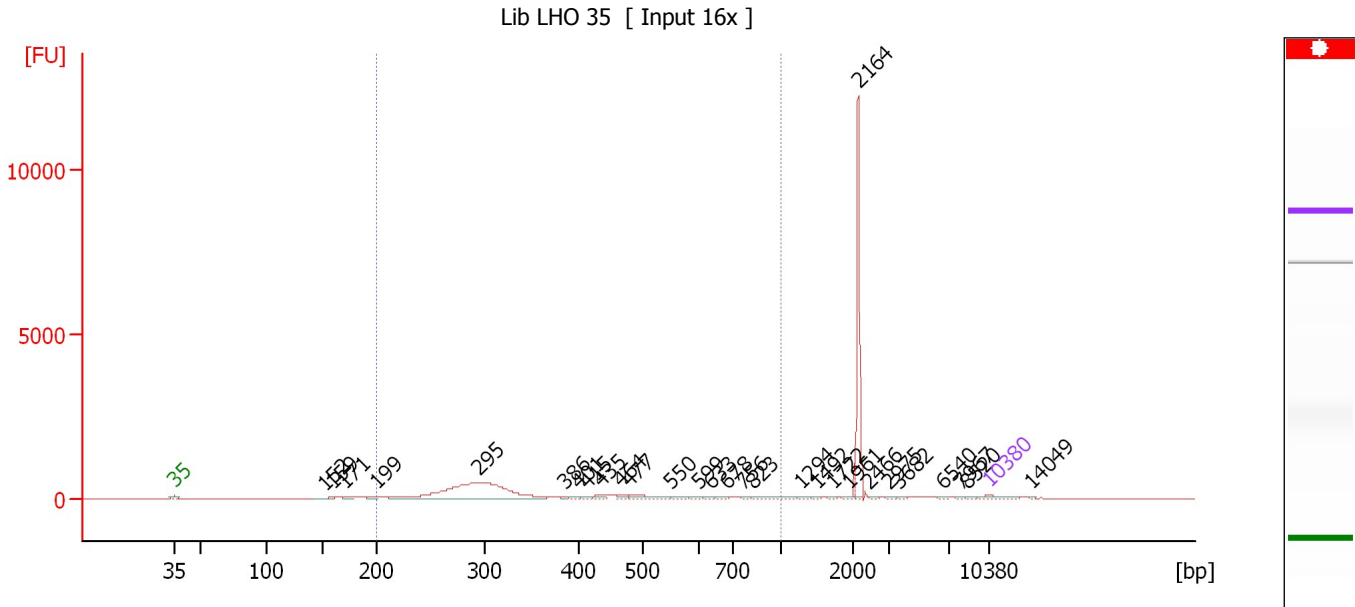
Region table for sample 7 : Lib LHO 34

From [bp]	To [bp]	Average Size [bp]	Molarity [pmol/l]	Conc. [pg/ μ l]	Corr. Area	% of Total	Size distribution in CV [%]	Color
200	1,000	362	182,263.8	38,625.13	5,535.1	89	36.5	

Assay Class: High Sensitivity DNA Assay
 Data Path: C:\...ents and Settings\Bioanalyzer\2013-07-09\2013-07-09_001.xad

Created: 7/9/2013 12:19:29 PM
 Modified: 7/9/2013 1:00:51 PM

Electropherogram Summary Continued ...



Overall Results for sample 8 : Lib LHO 35

Number of peaks found: 29 Corr. Area 1: 5,340.4
 Noise: 1.7

Peak table for sample 8 : Lib LHO 35

Peak	Size [bp]	Conc. [pg/μl]	Molarity [pmol/l]	Observations
1	35	125.00	5,411.3	Lower Marker
2	152	10.42	103.6	
3	159	16.00	152.2	
4	171	28.56	253.1	
5	199	24.14	184.3	
6	295	4,835.59	24,853.3	
7	386	46.42	182.3	
8	401	72.53	273.7	
9	415	76.68	280.0	
10	435	110.98	387.0	
11	464	87.56	285.9	
12	477	281.19	892.3	
13	550	82.42	227.0	
14	599	45.77	115.7	
15	633	47.53	113.8	
16	678	64.18	143.4	
17	756	36.96	74.1	
18	823	140.41	258.4	
19	1,294	28.32	33.2	
20	1,492	14.34	14.6	
21	1,722	16.35	14.4	
22	1,961	66.46	51.3	
23	2,164	2,696.14	1,888.1	
24	2,466	8.99	5.5	
25	2,975	9.02	4.6	
26	3,682	7.92	3.3	

Assay Class: High Sensitivity DNA Assay
 Data Path: C:\...ents and Settings\Bioanalyzer\2013-07-09\2013-07-09_001.xad


Created: 7/9/2013 12:19:29 PM
 Modified: 7/9/2013 1:00:51 PM

Electropherogram Summary Continued ...

... Peak table for sample 8 : Lib LHO 35

Peak	Size [bp]	Conc. [pg/μl]	Molarity [pmol/l]	Observations
27	6,540	6.54	1.5	
28	7,967	5.55	1.1	
29	8,520	6.50	1.2	
30	10,380	75.00	10.9	Upper Marker
31	14,049	0.00	0.0	

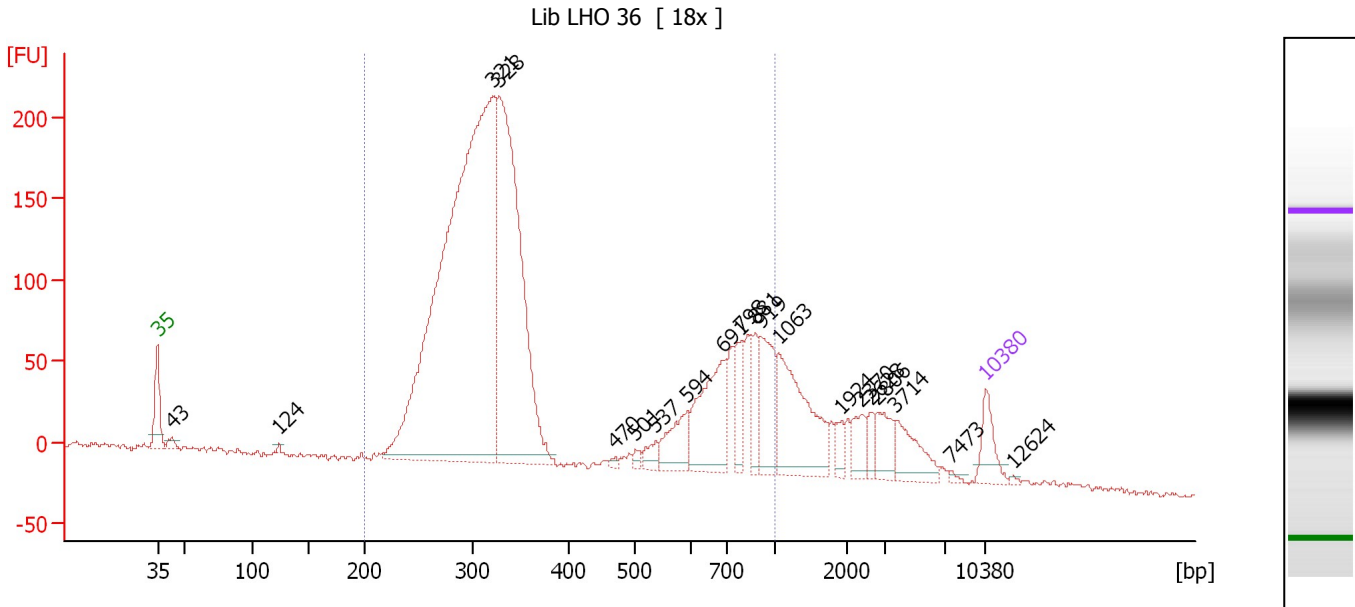
Region table for sample 8 : Lib LHO 35

From [bp]	To [bp]	Average Size [bp]	Molarity [pmol/l]	Conc. [pg/μl]	Corr. Area	% of Total	Size distribution in CV [%]	Color
200	1,000	363	29,477.3	6,202.84	5,340.4	58	38.8	

Assay Class: High Sensitivity DNA Assay
 Data Path: C:\...ents and Settings\Bioanalyzer\2013-07-09\2013-07-09_001.xad

Created: 7/9/2013 12:19:29 PM
 Modified: 7/9/2013 1:00:51 PM

Electropherogram Summary Continued ...



Overall Results for sample 9 : Lib LHO 36

Number of peaks found: 20 Corr. Area 1: 2,992.8
 Noise: 2.0

Peak table for sample 9 : Lib LHO 36

Peak	Size [bp]	Conc. [pg/μl]	Molarity [pmol/l]	Observations
1	35	125.00	5,411.3	Lower Marker
2	43	28.37	1,010.0	
3	124	8.43	103.0	
4	321	2,856.86	13,477.4	
5	328	1,344.46	6,219.0	
6	470	10.04	32.3	
7	501	16.76	50.6	
8	537	38.98	109.9	
9	594	123.38	314.8	
10	691	294.98	646.8	
11	798	88.99	169.1	
12	881	90.44	155.6	
13	919	185.58	306.0	
14	1,063	330.19	470.5	
15	1,924	32.76	25.8	
16	2,370	59.35	37.9	
17	2,628	37.33	21.5	
18	2,806	75.09	40.5	
19	3,714	105.65	43.1	
20	7,473	6.77	1.4	
21	10,380	75.00	10.9	Upper Marker
22	12,624	0.00	0.0	

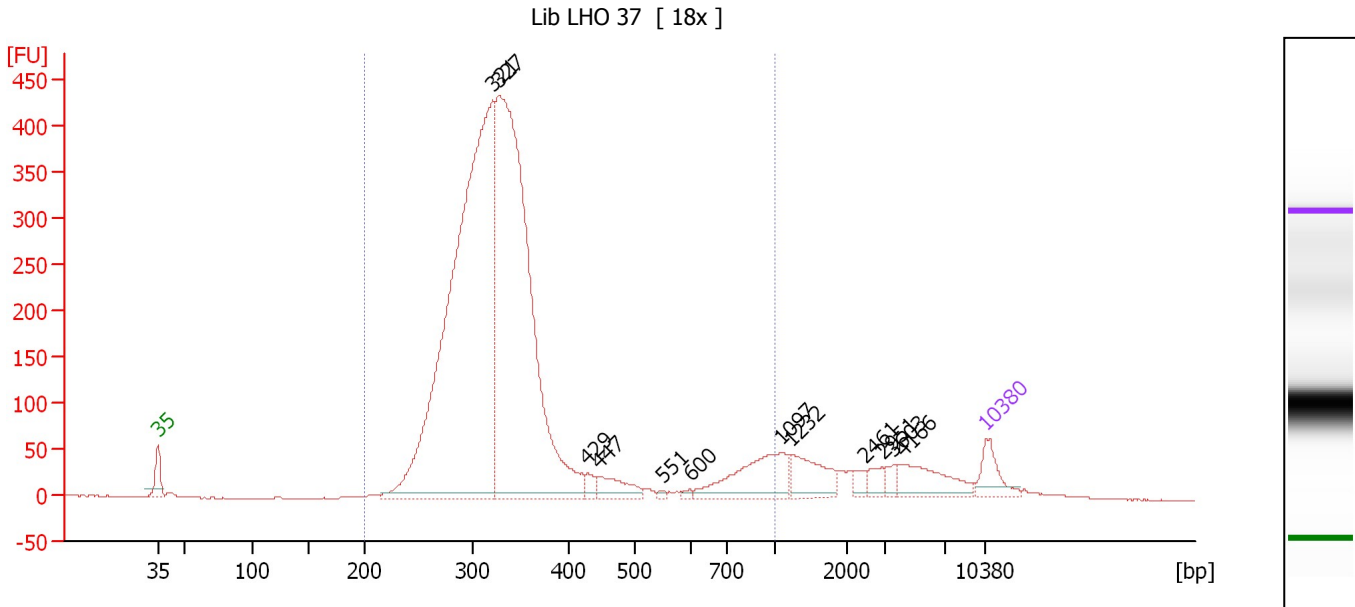
Region table for sample 9 : Lib LHO 36

From [bp]	To [bp]	Average Size [bp]	Molarity [pmol/l]	Conc. [pg/μl]	Corr. Area	% of Total	Size distribution in CV [%]	Color
200	1,000	424	24,505.9	5,496.35	2,992.8	83	48.9	Blue

Assay Class: High Sensitivity DNA Assay
 Data Path: C:\...ents and Settings\Bioanalyzer\2013-07-09\2013-07-09_001.xad

Created: 7/9/2013 12:19:29 PM
 Modified: 7/9/2013 1:00:51 PM

Electropherogram Summary Continued ...



Overall Results for sample 10 : Lib LHO 37

Number of peaks found: 12 Corr. Area 1: 4,769.4
 Noise: 0.4

Peak table for sample 10 : Lib LHO 37

Peak	Size [bp]	Conc. [pg/μl]	Molarity [pmol/l]	Observations
1	35	125.00	5,411.3	Lower Marker
2	321	2,896.12	13,676.9	
3	327	2,386.07	11,045.8	
4	429	33.27	117.5	
5	447	89.36	302.7	
6	551	8.02	22.1	
7	600	8.53	21.6	
8	1,097	229.90	317.5	
9	1,232	133.99	164.7	
10	2,461	26.11	16.1	
11	2,951	36.30	18.6	
12	3,603	25.85	10.9	
13	4,166	129.11	47.0	
14	10,380	75.00	10.9	Upper Marker

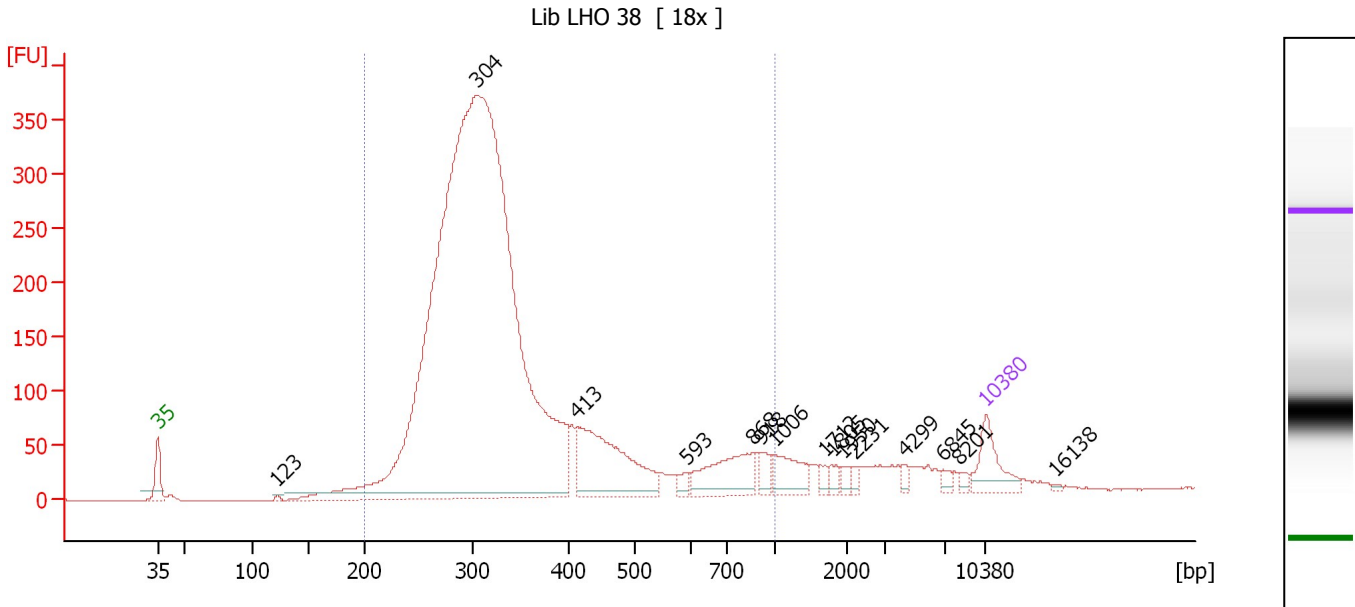
Region table for sample 10 : Lib LHO 37

From [bp]	To [bp]	Average Size [bp]	Molarity [pmol/l]	Conc. [pg/μl]	Corr. Area	% of Total	Size distribution in CV [%]	Color
200	1,000	352	26,623.6	5,698.79	4,769.4	89	35.4	Blue

Assay Class: High Sensitivity DNA Assay
 Data Path: C:\...ents and Settings\Bioanalyzer\2013-07-09\2013-07-09_001.xad

Created: 7/9/2013 12:19:29 PM
 Modified: 7/9/2013 1:00:51 PM

Electropherogram Summary Continued ...



Overall Results for sample 11 : Lib LHO 38

Number of peaks found: 15 Corr. Area 1: 4,688.7
 Noise: 0.3

Peak table for sample 11 : Lib LHO 38

Peak	Size [bp]	Conc. [pg/μl]	Molarity [pmol/l]	Observations
1	35	125.00	5,411.3	Lower Marker
2	123	5.85	72.3	
3	304	4,196.38	20,880.9	
4	413	340.59	1,250.0	
5	593	19.63	50.1	
6	868	143.80	251.1	
7	918	35.76	59.0	
8	1,006	76.70	115.5	
9	1,712	15.96	14.1	
10	1,805	15.54	13.0	
11	1,950	14.78	11.5	
12	2,231	11.00	7.5	
13	4,299	10.89	3.8	
14	6,845	12.64	2.8	
15	8,201	9.70	1.8	
16	10,380	75.00	10.9	Upper Marker
17	16,138	0.00	0.0	

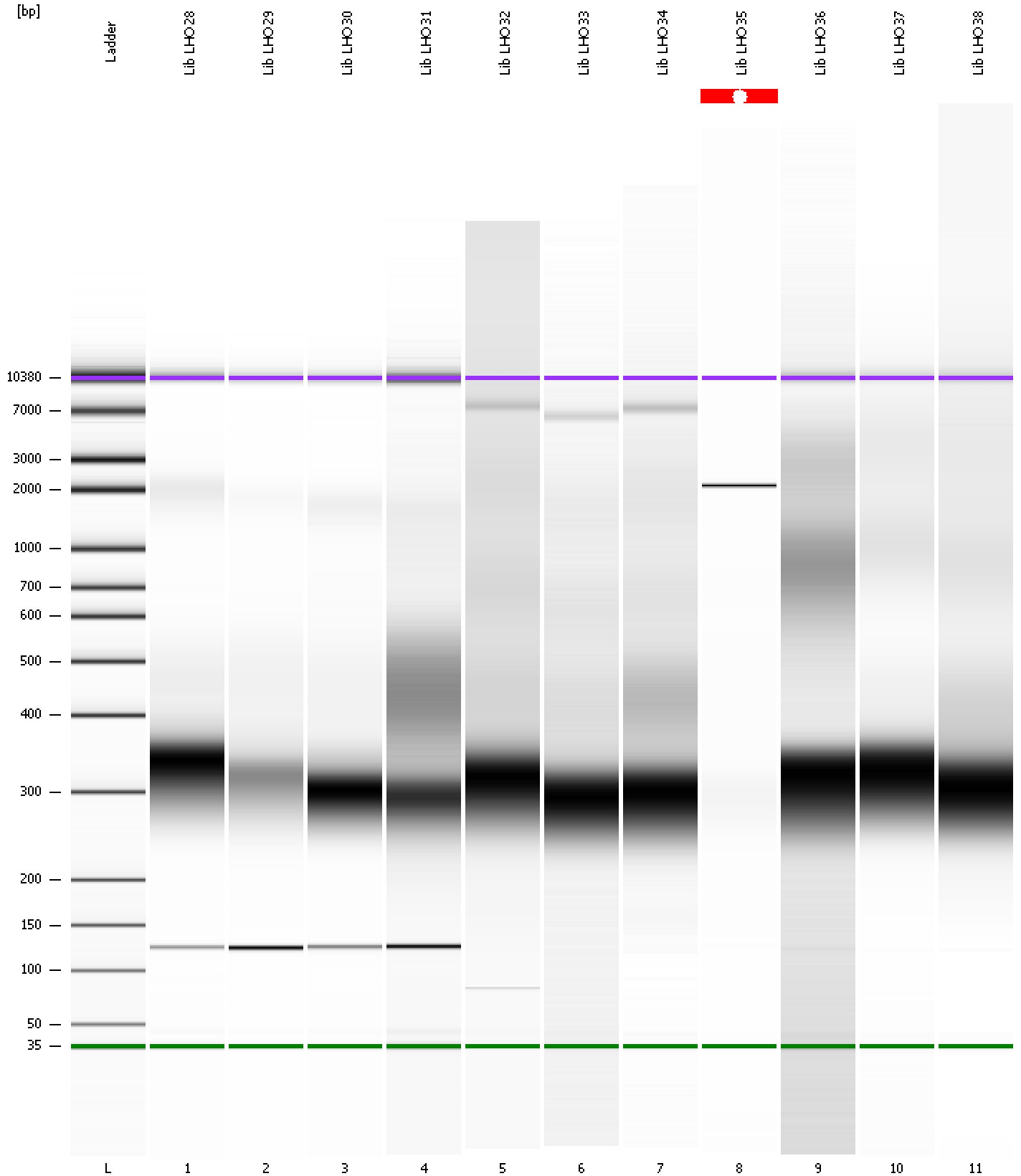
Region table for sample 11 : Lib LHO 38

From [bp]	To [bp]	Average Size [bp]	Molarity [pmol/l]	Conc. [pg/μl]	Corr. Area	% of Total	Size distribution in CV [%]	Color
200	1,000	353	22,260.5	4,670.08	4,688.7	91	37.2	Blue

Assay Class: High Sensitivity DNA Assay
Data Path: C:\...ents and Settings\Bioanalyzer\2013-07-09\2013-07-09_001.xad

Created: 7/9/2013 12:19:29 PM
Modified: 7/9/2013 1:00:51 PM

Gel Image



Assay Class: High Sensitivity DNA Assay
 Data Path: C:\...ents and Settings\Bioanalyzer\2013-07-09\2013-07-09_001.xad

Created: 7/9/2013 12:19:29 PM
 Modified: 7/9/2013 1:00:51 PM

Run Logbook

Description	Number	Source	Category	Sub Category	Time	Time Zone	User	Host
Run ended on port 1 (Number of wells acquired: 12)		Instrument	Run		7/9/2013 1:00:48 PM	(GMT --07:00) Pacific Standard Time	UC Davis	D8XSMGH1
Instrument error occurred on port 1, Optical signal too high (1605h)	559	Instrument	Run	Sample 8	7/9/2013 12:51:33 PM	(GMT --07:00) Pacific Standard Time	UC Davis	D8XSMGH1
Run started on port 1 (File: C:\Documents and Settings\Bioanalyzer\2013-07-09\2013-07-09_001.xad)		Instrument	Run		7/9/2013 12:19:35 PM	(GMT --07:00) Pacific Standard Time	UC Davis	D8XSMGH1
Product Number : G2938B		Instrument	Run		7/9/2013 12:19:35 PM	(GMT --07:00) Pacific Standard Time	UC Davis	D8XSMGH1
Name :		Instrument	Run		7/9/2013 12:19:35 PM	(GMT --07:00) Pacific Standard Time	UC Davis	D8XSMGH1
Vendor : Agilent Technologies		Instrument	Run		7/9/2013 12:19:35 PM	(GMT --07:00) Pacific Standard Time	UC Davis	D8XSMGH1
Serial# : DE13701086		Instrument	Run		7/9/2013 12:19:35 PM	(GMT --07:00) Pacific Standard Time	UC Davis	D8XSMGH1
Firmware : C.01.069		Instrument	Run		7/9/2013 12:19:35 PM	(GMT --07:00) Pacific Standard Time	UC Davis	D8XSMGH1
Cartridge : Electrode		Instrument	Run		7/9/2013 12:19:35 PM	(GMT --07:00) Pacific Standard Time	UC Davis	D8XSMGH1