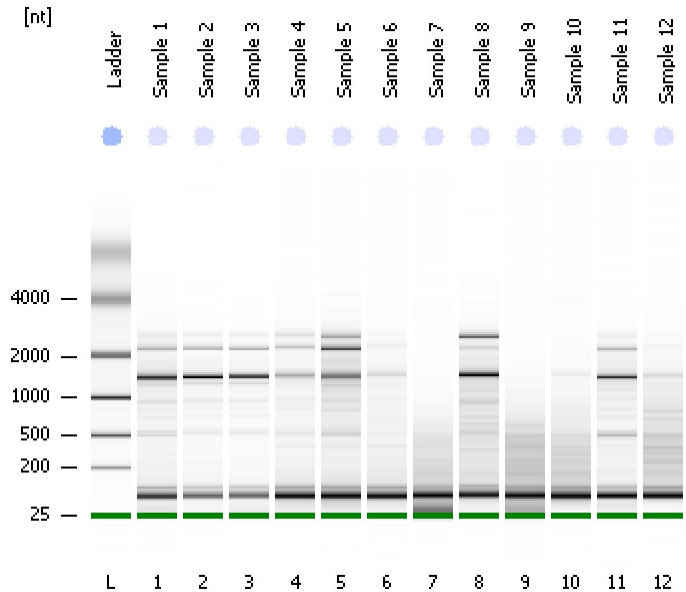


Assay Class: Eukaryote Total RNA Nano
Data Path: C:\...ents and Settings\Bioanalyzer\2013-07-10\2013-07-10_004.xad

Created: 7/10/2013 12:26:53 PM
Modified: 7/10/2013 6:12:05 PM

Electrophoresis File Run Summary



Instrument Information:

Instrument Name: DE13701086 Firmware: C.01.069
Serial#: DE13701086 Type: G2938B

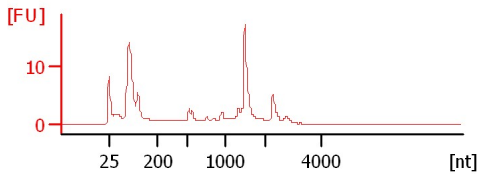
Assay Information:

Assay Origin Path: C:\Program Files\Agilent\2100 bioanalyzer\2100 expert\assays\RNA\Eukaryote Total RNA Nano Series II.xsy
Assay Class: Eukaryote Total RNA Nano
Version: 2.6
Assay Comments: Total RNA Analysis ng sensitivity (Eukaryote)
© Copyright 2003 - 2009 Agilent Technologies, Inc.

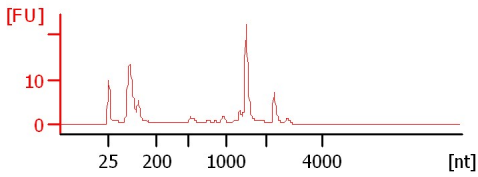
Chip Information:

Chip Lot #:
Reagent Kit Lot #:
Chip Comments:

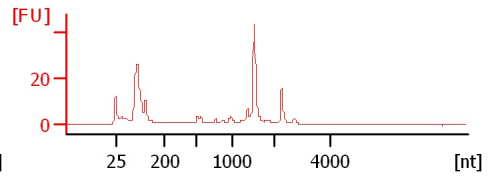
Sample 1
RIN: 6.90



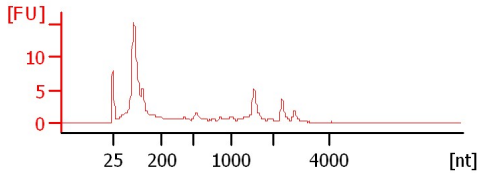
Sample 2
RIN: 6.90



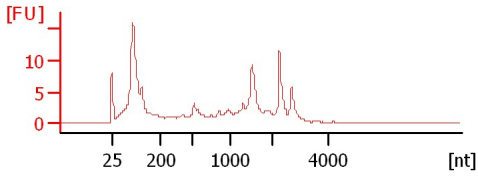
Sample 3
RIN: 6.70



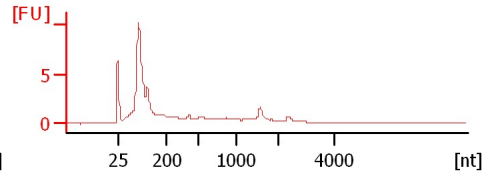
Sample 4
RIN: 3.80



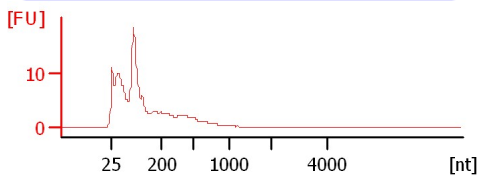
Sample 5
RIN: 4.10



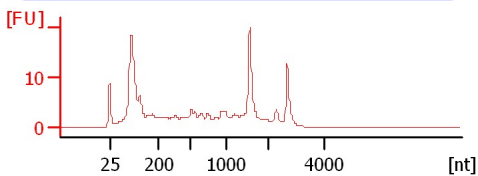
Sample 6
RIN: 2.80



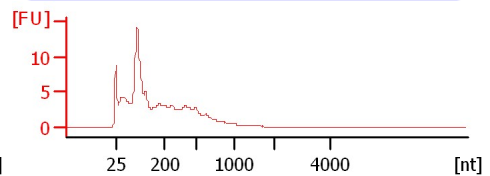
Sample 7
RIN: 2.40



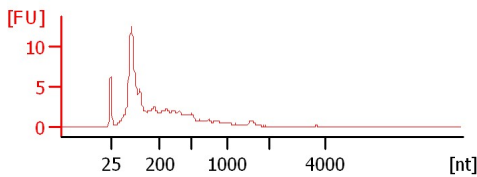
Sample 8
RIN: 6.40



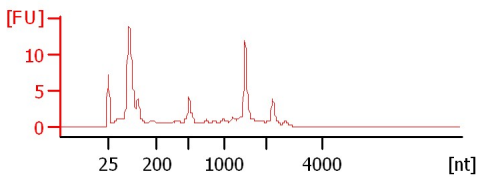
Sample 9
RIN: 2.30



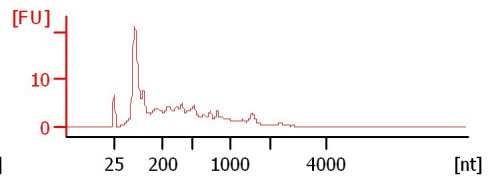
Sample 10
RIN: 2.40



Sample 11
RIN: 6.10



Sample 12
RIN: 2.40



Assay Class: Eukaryote Total RNA Nano
Data Path: C:\...ents and Settings\Bioanalyzer\2013-07-10\2013-07-10_004.xad

Created: 7/10/2013 12:26:53 PM
Modified: 7/10/2013 6:12:05 PM

Electrophoresis File Run Summary (Chip Summary)

Sample Name	Sample Comment	Status	Result Label	Result Color
Sample 1		✓	RIN: 6.90	
Sample 2		✓	RIN: 6.90	
Sample 3		✓	RIN: 6.70	
Sample 4		✓	RIN: 3.80	
Sample 5		✓	RIN: 4.10	
Sample 6		✓	RIN: 2.80	
Sample 7		✓	RIN: 2.40	
Sample 8		✓	RIN: 6.40	
Sample 9		✓	RIN: 2.30	
Sample 10		✓	RIN: 2.40	
Sample 11		✓	RIN: 6.10	
Sample 12		✓	RIN: 2.40	
Ladder		✓	All Other Samples	

Chip Lot #

Reagent Kit Lot #

Chip Comments :

Assay Class: Eukaryote Total RNA Nano
Data Path: C:\...ents and Settings\Bioanalyzer\2013-07-10\2013-07-10_004.xad

Created: 7/10/2013 12:26:53 PM
Modified: 7/10/2013 6:12:05 PM

Electrophoresis Assay Details

General Analysis Settings

Number of Available Sample and Ladder Wells (Max.) : 13
Minimum Visible Range [s] : 17
Maximum Visible Range [s] : 70
Start Analysis Time Range [s] : 19
End Analysis Time Range [s] : 69
Ladder Concentration [ng/μl] : 150
Lower Marker Concentration [ng/μl] : 0
Upper Marker Concentration [ng/μl] : 0
Used Lower Marker for Quantitation
Standard Curve Fit is Logarithmic
Show Data Aligned to Lower Marker

Integrator Settings

Integration Start Time [s] : 19
Integration End Time [s] : 69
Slope Threshold : 0.6
Height Threshold [FU] : 0.5
Area Threshold : 0.2
Width Threshold [s] : 0.5
Baseline Plateau [s] : 6

Filter Settings

Filter Width [s] : 0.5
Polynomial Order : 4

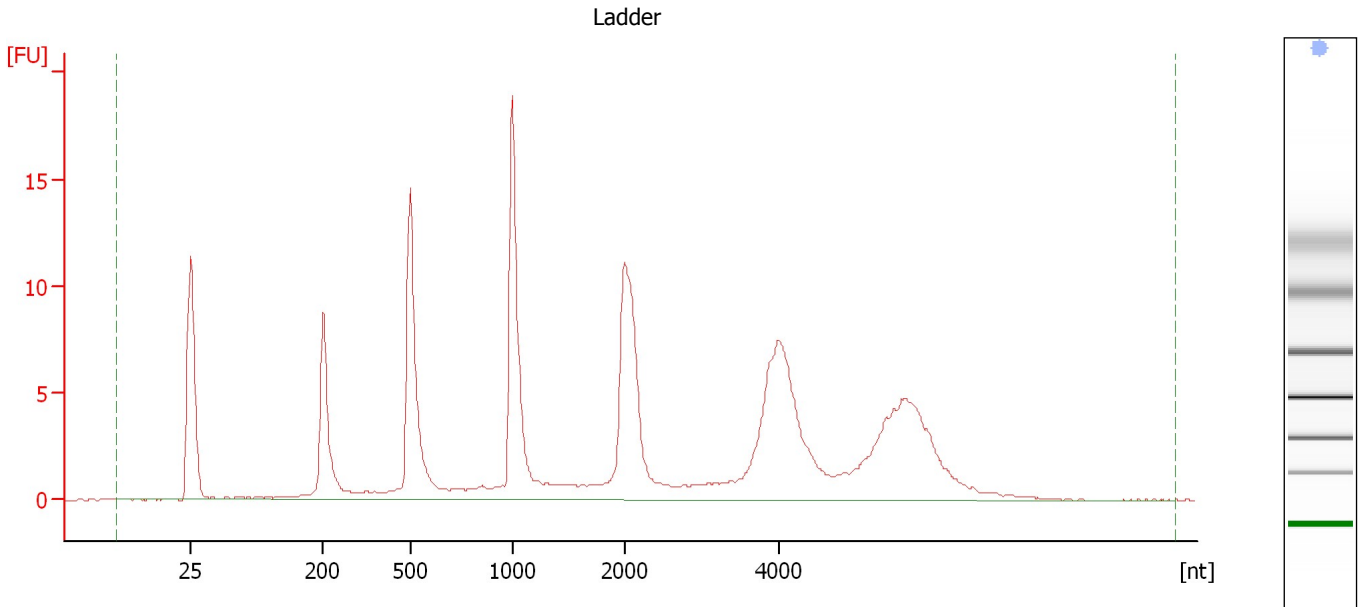
Ladder

Ladder Peak	Size
1	25
2	200
3	500
4	1000
5	2000
6	4000

Assay Class: Eukaryote Total RNA Nano
Data Path: C:\...ents and Settings\Bioanalyzer\2013-07-10\2013-07-10_004.xad

Created: 7/10/2013 12:26:53 PM
Modified: 7/10/2013 6:12:05 PM

Electropherogram Summary



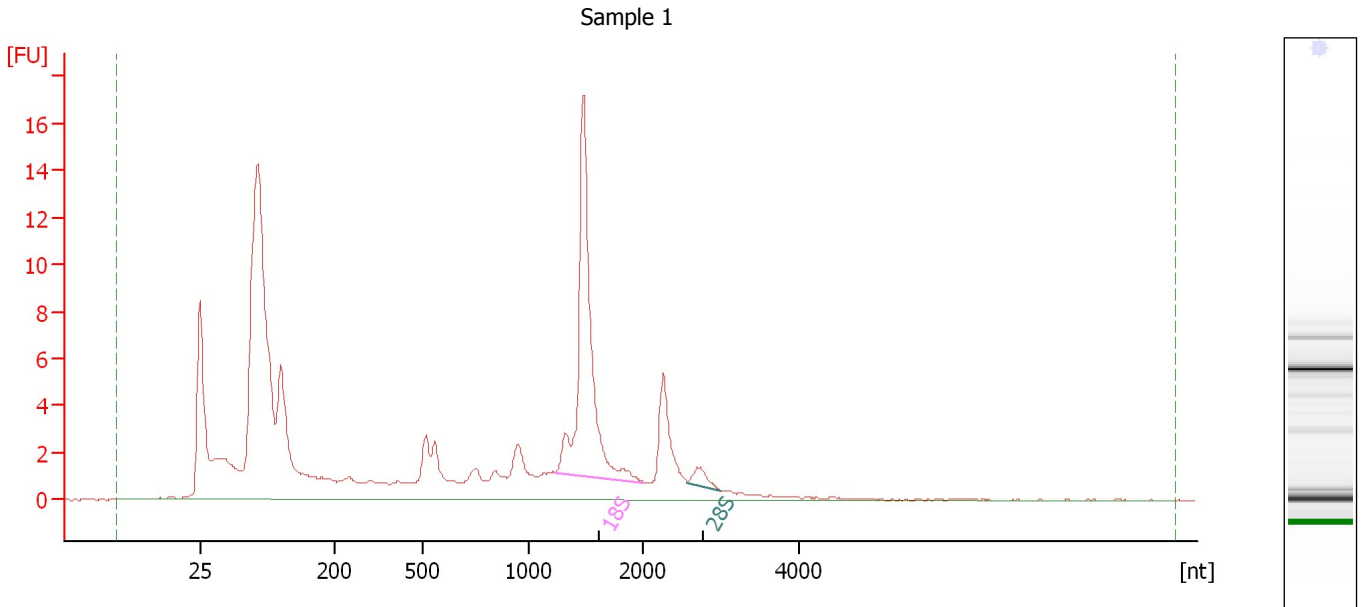
Overall Results for Ladder

RNA Area:	164.0	Result Flagging Color:	
RNA Concentration:	150 ng/μl	Result Flagging Label:	All Other Samples

Assay Class: Eukaryote Total RNA Nano
Data Path: C:\...ents and Settings\Bioanalyzer\2013-07-10\2013-07-10_004.xad

Created: 7/10/2013 12:26:53 PM
Modified: 7/10/2013 6:12:05 PM

Electropherogram Summary Continued ...



Overall Results for sample 1 : Sample 1

RNA Area:	149.7	RNA Integrity Number (RIN):	6.9 (B.02.08, Anomaly Threshold(s) manually adapted)
RNA Concentration:	137 ng/μl	Result Flagging Color:	
rRNA Ratio [28s / 18s]:	0.0	Result Flagging Label:	RIN: 6.90

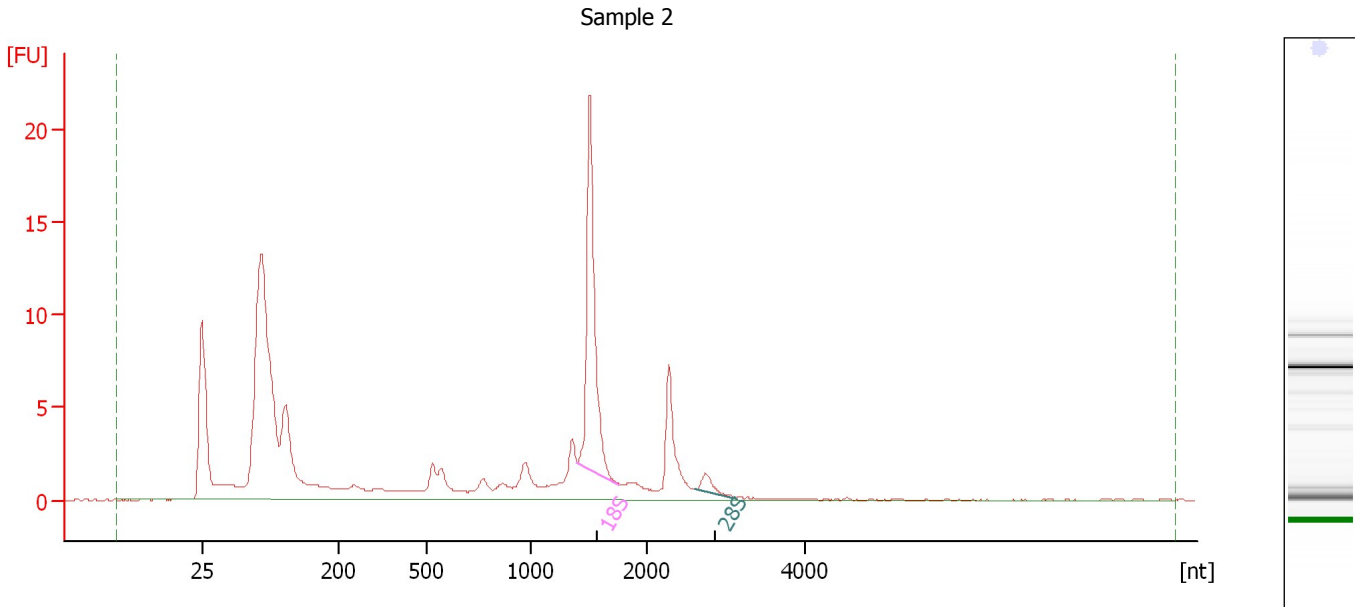
Fragment table for sample 1 : Sample 1

Name	Start Size [nt]	End Size [nt]	Area	% of total Area
18S	1,225	2,014	24.6	16.4
28S	2,572	3,008	1.2	0.8

Assay Class: Eukaryote Total RNA Nano
Data Path: C:\...ents and Settings\Bioanalyzer\2013-07-10\2013-07-10_004.xad

Created: 7/10/2013 12:26:53 PM
Modified: 7/10/2013 6:12:05 PM

Electropherogram Summary Continued ...



Overall Results for sample 2 : Sample 2

RNA Area:	130.7	RNA Integrity Number (RIN):	6.9 (B.02.08, Anomaly Threshold(s) manually adapted)
RNA Concentration:	120 ng/μl	Result Flagging Color:	
rRNA Ratio [28s / 18s]:	0.1	Result Flagging Label:	RIN: 6.90

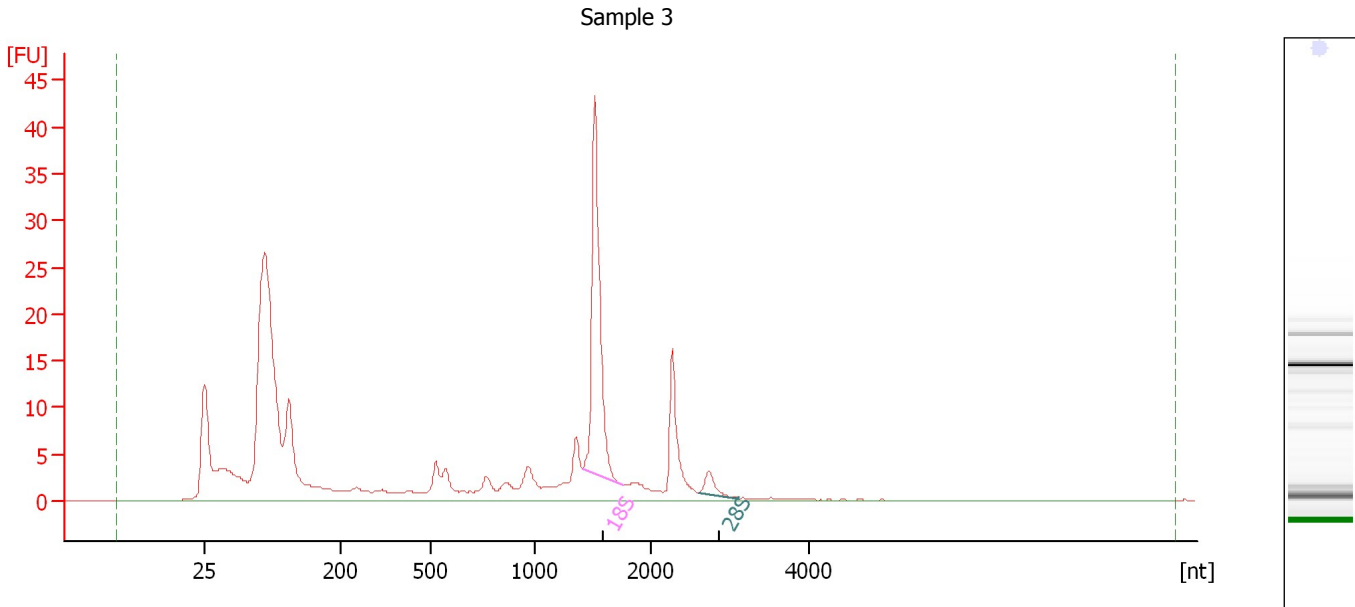
Fragment table for sample 2 : Sample 2

Name	Start Size [nt]	End Size [nt]	Area	% of total Area
18S	1,397	1,760	21.1	16.1
28S	2,614	3,143	1.3	1.0

Assay Class: Eukaryote Total RNA Nano
Data Path: C:\...ents and Settings\Bioanalyzer\2013-07-10\2013-07-10_004.xad

Created: 7/10/2013 12:26:53 PM
Modified: 7/10/2013 6:12:05 PM

Electropherogram Summary Continued ...



Overall Results for sample 3 : Sample 3

RNA Area:	264.0	RNA Integrity Number (RIN):	6.7 (B.02.08, Anomaly Threshold(s) manually adapted)
RNA Concentration:	242 ng/μl	Result Flagging Color:	
rRNA Ratio [28s / 18s]:	0.1	Result Flagging Label:	RIN: 6.70

Fragment table for sample 3 : Sample 3

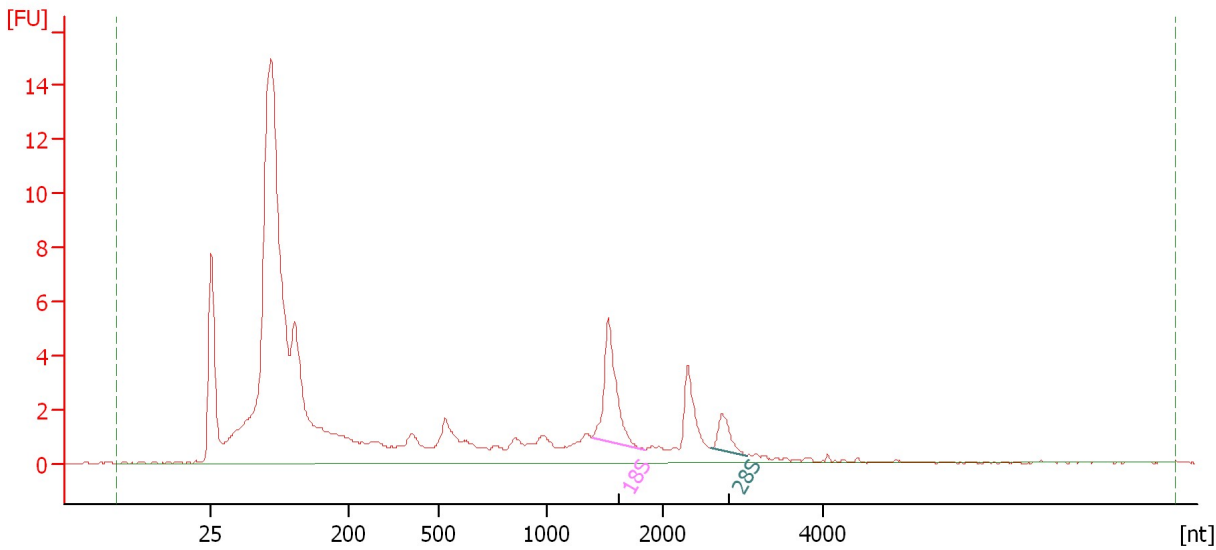
Name	Start Size [nt]	End Size [nt]	Area	% of total Area
18S	1,411	1,754	40.6	15.4
28S	2,601	3,114	2.6	1.0

Assay Class: Eukaryote Total RNA Nano
Data Path: C:\...ents and Settings\Bioanalyzer\2013-07-10\2013-07-10_004.xad

Created: 7/10/2013 12:26:53 PM
Modified: 7/10/2013 6:12:05 PM

Electropherogram Summary Continued ...

Sample 4



Overall Results for sample 4 : Sample 4

RNA Area:	124.0	RNA Integrity Number (RIN):	3.8 (B.02.08, Anomaly Threshold(s) manually adapted)
RNA Concentration:	113 ng/μl	Result Flagging Color:	
rRNA Ratio [28s / 18s]:	0.3	Result Flagging Label:	RIN: 3.80

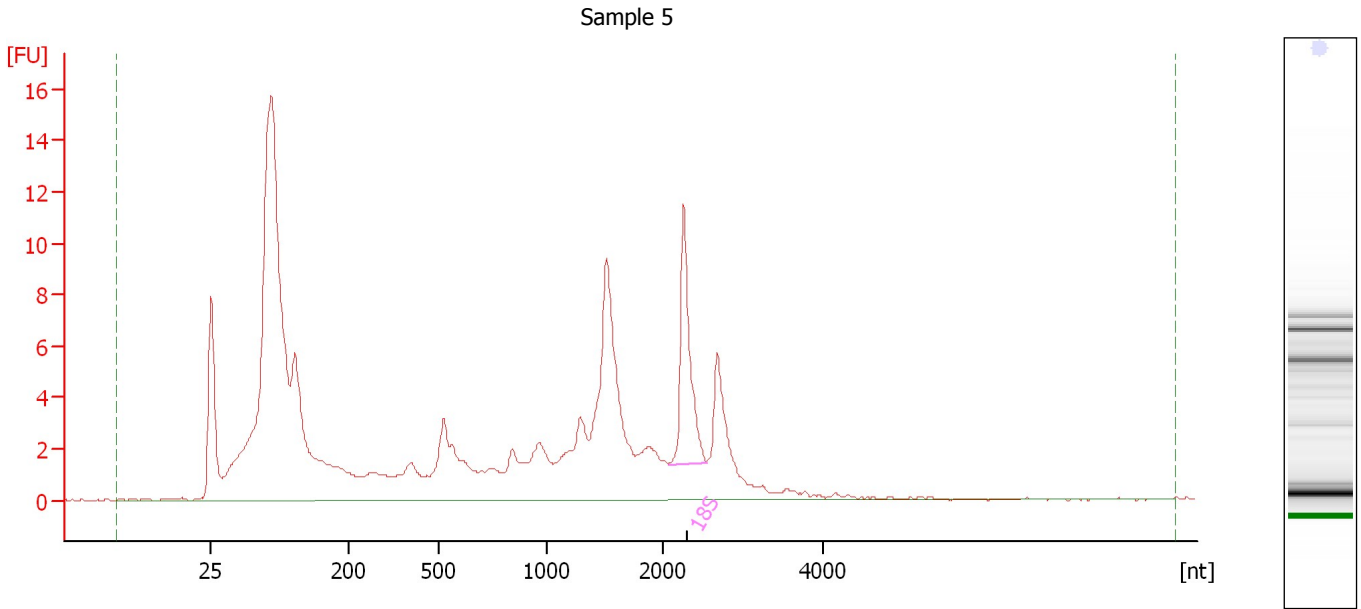
Fragment table for sample 4 : Sample 4

Name	Start Size [nt]	End Size [nt]	Area	% of total Area
18S	1,398	1,846	7.0	5.6
28S	2,589	3,042	1.9	1.5

Assay Class: Eukaryote Total RNA Nano
Data Path: C:\...ents and Settings\Bioanalyzer\2013-07-10\2013-07-10_004.xad

Created: 7/10/2013 12:26:53 PM
Modified: 7/10/2013 6:12:05 PM

Electropherogram Summary Continued ...



Overall Results for sample 5 : Sample 5

RNA Area:	190.5	RNA Integrity Number (RIN):	4.1 (B.02.08)
RNA Concentration:	174 ng/μl	Result Flagging Color:	
rRNA Ratio [28s / 18s]:	0.0	Result Flagging Label:	RIN: 4.10

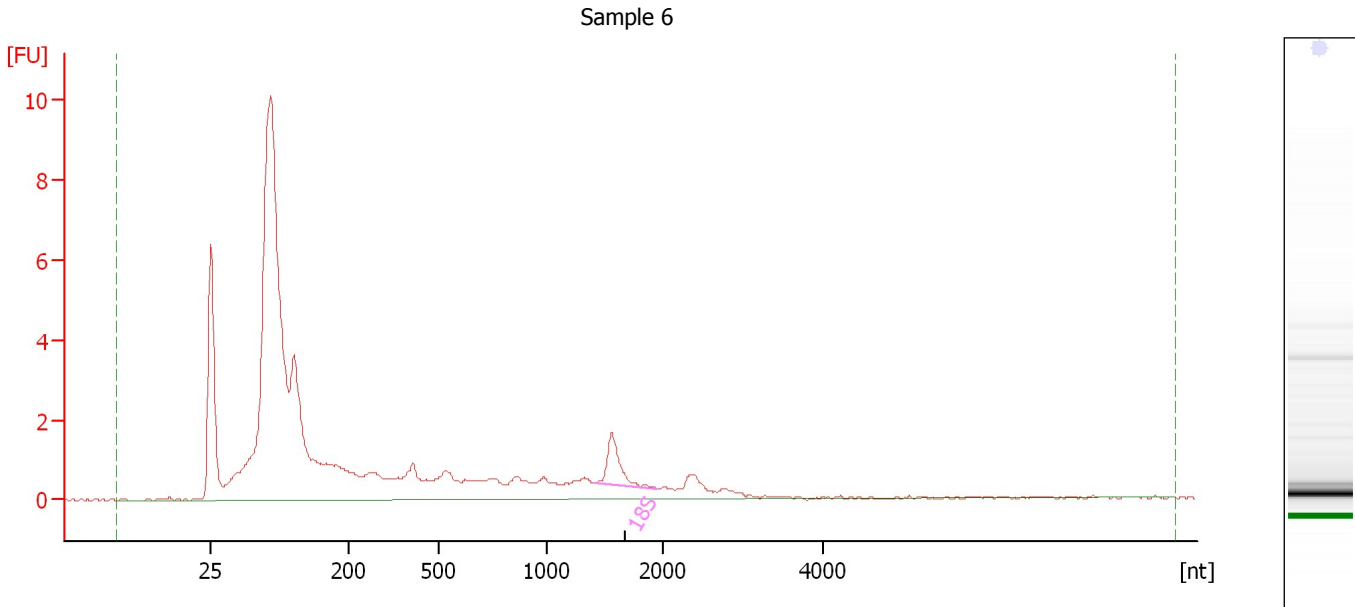
Fragment table for sample 5 : Sample 5

Name	Start Size [nt]	End Size [nt]	Area	% of total Area
18S	2,069	2,549	11.0	5.8

Assay Class: Eukaryote Total RNA Nano
Data Path: C:\...ents and Settings\Bioanalyzer\2013-07-10\2013-07-10_004.xad

Created: 7/10/2013 12:26:53 PM
Modified: 7/10/2013 6:12:05 PM

Electropherogram Summary Continued ...



Overall Results for sample 6 : Sample 6

RNA Area:	76.4	RNA Integrity Number (RIN):	2.8 (B.02.08)
RNA Concentration:	70 ng/μl	Result Flagging Color:	
rRNA Ratio [28s / 18s]:	0.0	Result Flagging Label:	RIN: 2.80

Fragment table for sample 6 : Sample 6

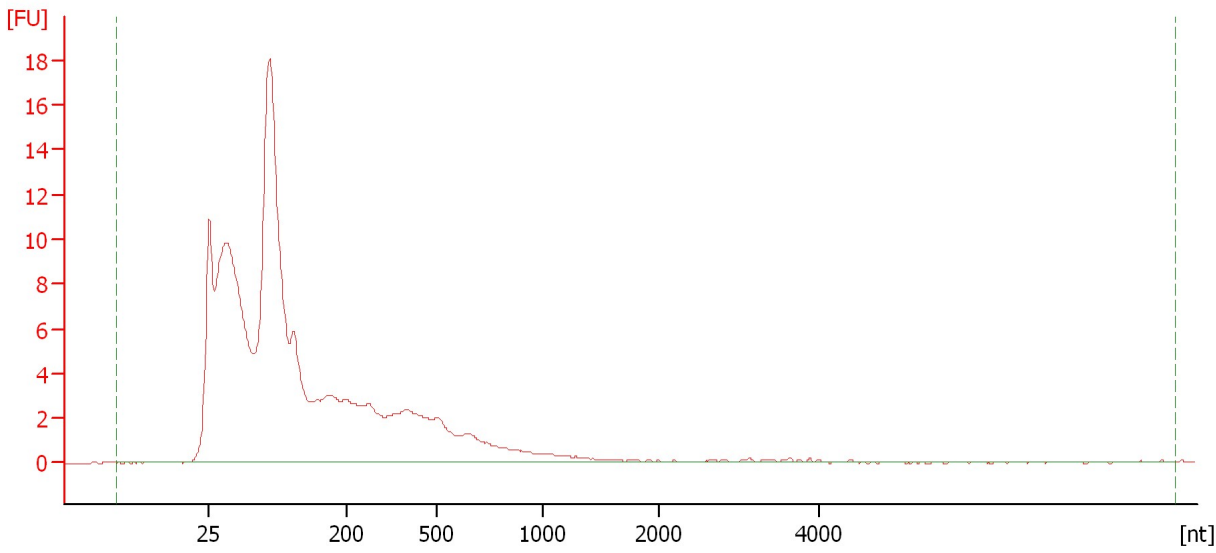
Name	Start Size [nt]	End Size [nt]	Area	% of total Area
18S	1,425	1,946	2.0	2.7

Assay Class: Eukaryote Total RNA Nano
Data Path: C:\...ents and Settings\Bioanalyzer\2013-07-10\2013-07-10_004.xad

Created: 7/10/2013 12:26:53 PM
Modified: 7/10/2013 6:12:05 PM

Electropherogram Summary Continued ...

Sample 7



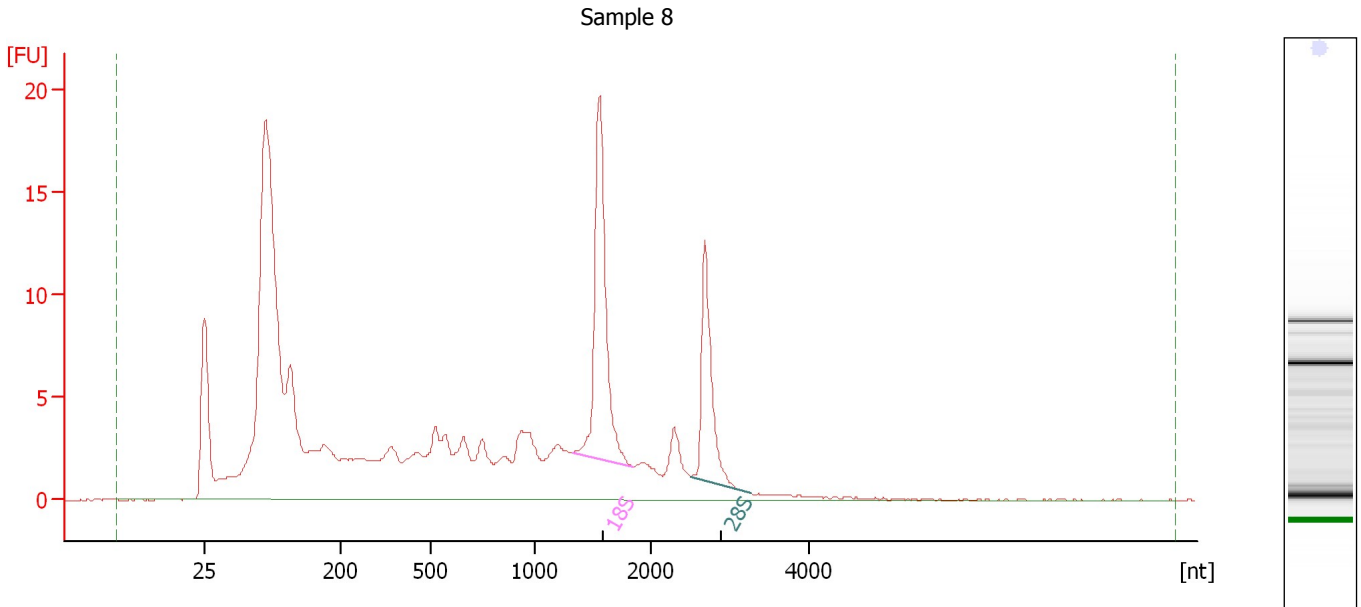
Overall Results for sample 7 : Sample 7

RNA Area:	196.3	RNA Integrity Number (RIN):	2.4 (B.02.08)
RNA Concentration:	180 ng/μl	Result Flagging Color:	
rRNA Ratio [28s / 18s]:	0.0	Result Flagging Label:	RIN: 2.40

Assay Class: Eukaryote Total RNA Nano
 Data Path: C:\...ents and Settings\Bioanalyzer\2013-07-10\2013-07-10_004.xad

Created: 7/10/2013 12:26:53 PM
 Modified: 7/10/2013 6:12:05 PM

Electropherogram Summary Continued ...



Overall Results for sample 8 : Sample 8

RNA Area:	238.3	RNA Integrity Number (RIN):	6.4 (B.02.08, Anomaly Threshold(s) manually adapted)
RNA Concentration:	218 ng/μl	Result Flagging Color:	
rRNA Ratio [28s / 18s]:	0.5	Result Flagging Label:	RIN: 6.40

Fragment table for sample 8 : Sample 8

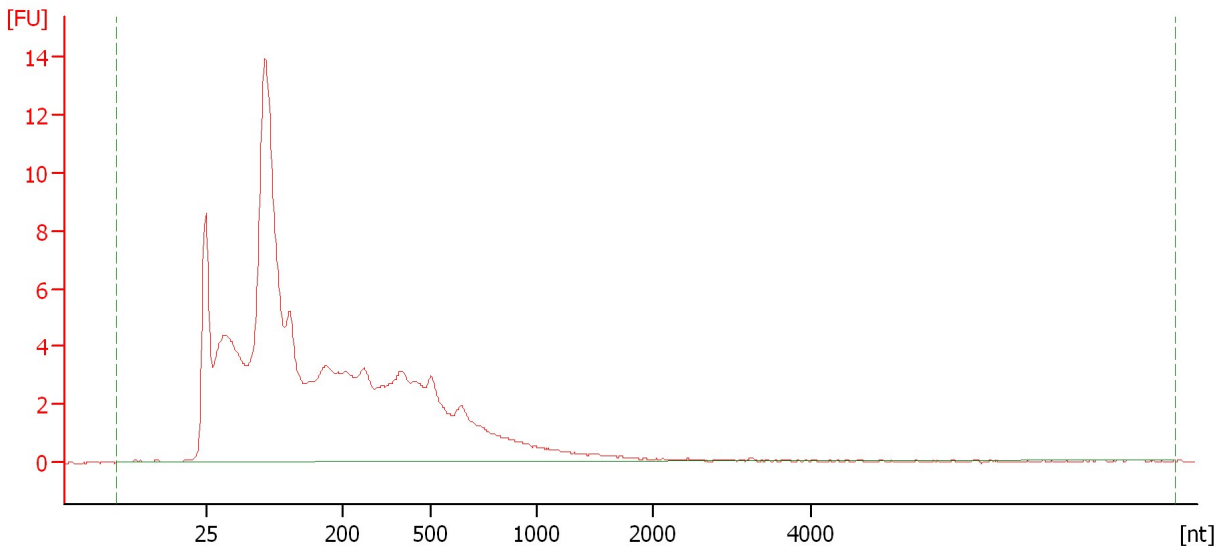
Name	Start Size [nt]	End Size [nt]	Area	% of total Area
18S	1,328	1,847	24.6	10.3
28S	2,506	3,276	12.8	5.4

Assay Class: Eukaryote Total RNA Nano
Data Path: C:\...ents and Settings\Bioanalyzer\2013-07-10\2013-07-10_004.xad

Created: 7/10/2013 12:26:53 PM
Modified: 7/10/2013 6:12:05 PM

Electropherogram Summary Continued ...

Sample 9



Overall Results for sample 9 : Sample 9

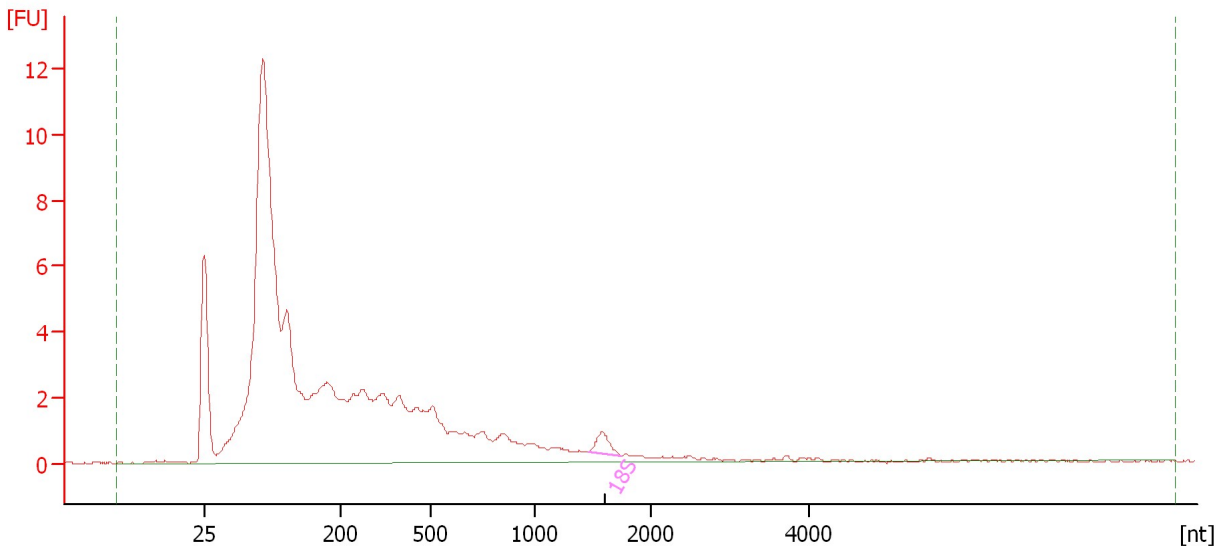
RNA Area:	167.2	RNA Integrity Number (RIN):	2.3 (B.02.08)
RNA Concentration:	153 ng/μl	Result Flagging Color:	
rRNA Ratio [28s / 18s]:	0.0	Result Flagging Label:	RIN: 2.30

Assay Class: Eukaryote Total RNA Nano
Data Path: C:\...ents and Settings\Bioanalyzer\2013-07-10\2013-07-10_004.xad

Created: 7/10/2013 12:26:53 PM
Modified: 7/10/2013 6:12:05 PM

Electropherogram Summary Continued ...

Sample 10



Overall Results for sample 10 : Sample 10

RNA Area:	117.6	RNA Integrity Number (RIN):	2.4 (B.02.08)
RNA Concentration:	108 ng/μl	Result Flagging Color:	
rRNA Ratio [28s / 18s]:	0.0	Result Flagging Label:	RIN: 2.40

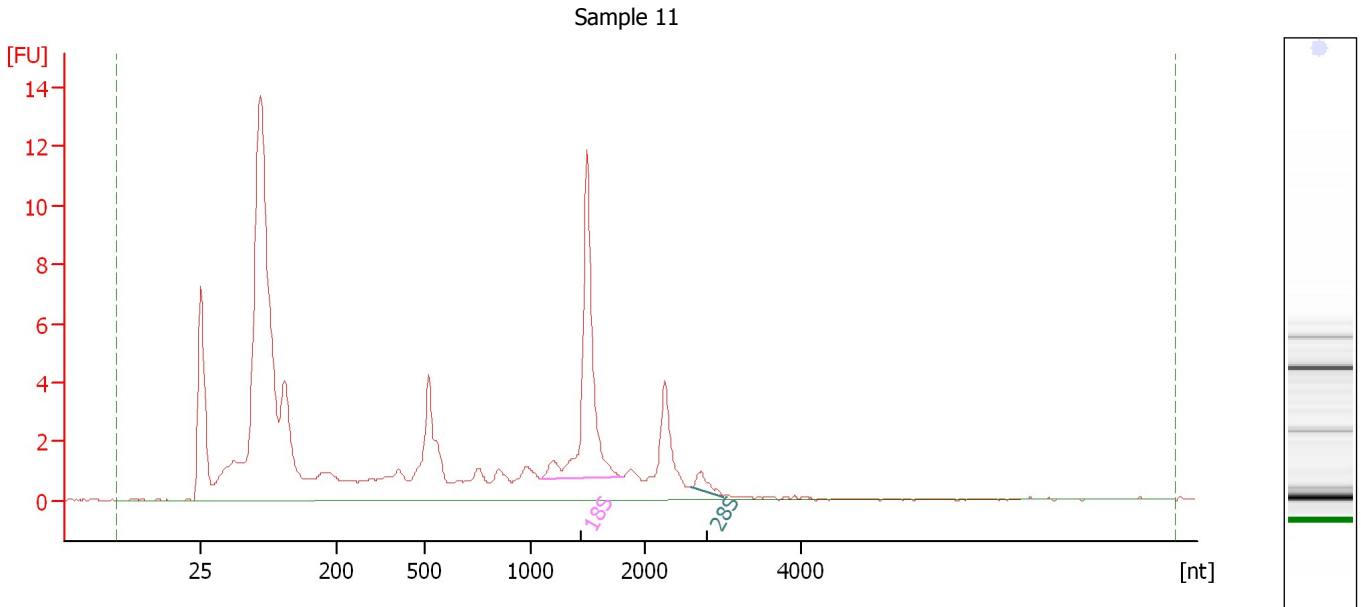
Fragment table for sample 10 : Sample 10

Name	Start Size [nt]	End Size [nt]	Area	% of total Area
18S	1,458	1,736	1.0	0.9

Assay Class: Eukaryote Total RNA Nano
 Data Path: C:\...ents and Settings\Bioanalyzer\2013-07-10\2013-07-10_004.xad

Created: 7/10/2013 12:26:53 PM
 Modified: 7/10/2013 6:12:05 PM

Electropherogram Summary Continued ...



Overall Results for sample 11 : Sample 11

RNA Area:	122.3	RNA Integrity Number (RIN):	6.1 (B.02.08, Anomaly Threshold(s) manually adapted)
RNA Concentration:	112 ng/μl	Result Flagging Color:	
rRNA Ratio [28s / 18s]:	0.1	Result Flagging Label:	RIN: 6.10

Fragment table for sample 11 : Sample 11

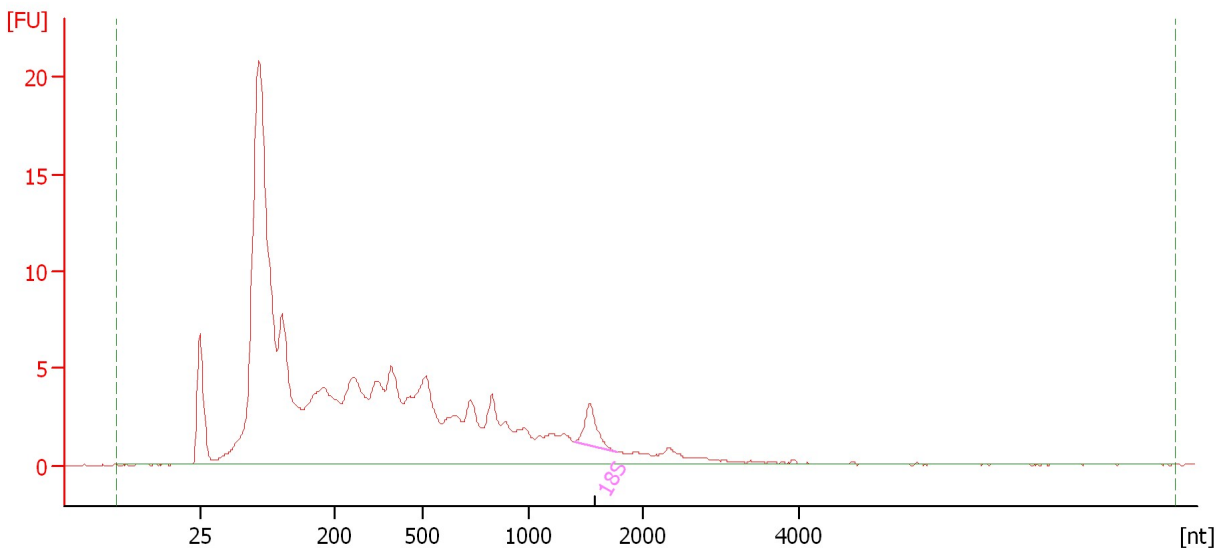
Name	Start Size [nt]	End Size [nt]	Area	% of total Area
18S	1,088	1,805	14.7	12.1
28S	2,600	3,007	0.8	0.7

Assay Class: Eukaryote Total RNA Nano
Data Path: C:\...ents and Settings\Bioanalyzer\2013-07-10\2013-07-10_004.xad

Created: 7/10/2013 12:26:53 PM
Modified: 7/10/2013 6:12:05 PM

Electropherogram Summary Continued ...

Sample 12



Overall Results for sample 12 : Sample 12

RNA Area:	216.5	RNA Integrity Number (RIN):	2.4 (B.02.08)
RNA Concentration:	198 ng/μl	Result Flagging Color:	
rRNA Ratio [28s / 18s]:	0.0	Result Flagging Label:	RIN: 2.40

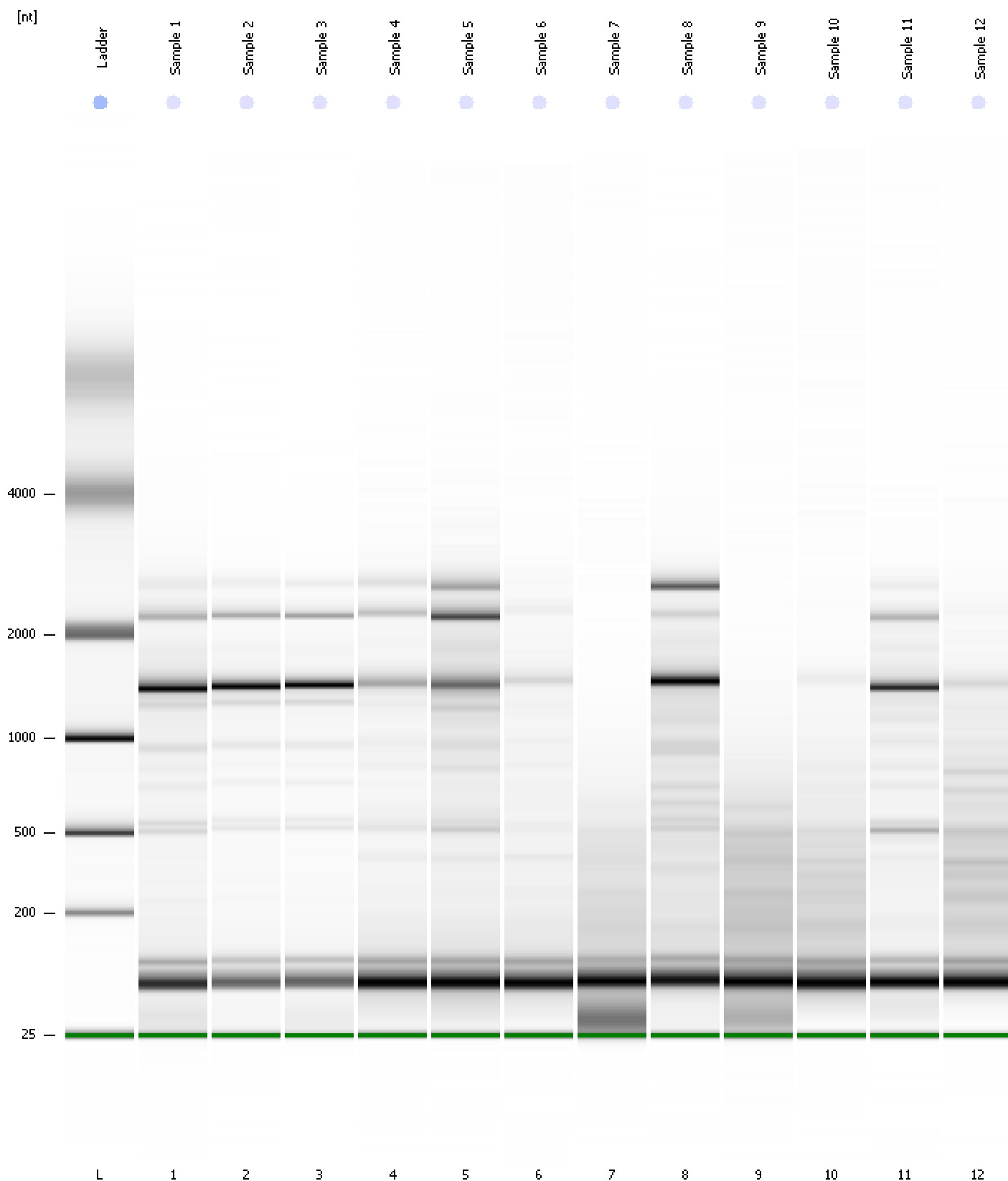
Fragment table for sample 12 : Sample 12

Name	Start Size [nt]	End Size [nt]	Area	% of total Area
18S	1,402	1,766	3.5	1.6

Assay Class: Eukaryote Total RNA Nano
Data Path: C:\...ents and Settings\Bioanalyzer\2013-07-10\2013-07-10_004.xad

Created: 7/10/2013 12:26:53 PM
Modified: 7/10/2013 6:12:05 PM

Gel Image



Assay Class: Eukaryote Total RNA Nano
 Data Path: C:\...ents and Settings\Bioanalyzer\2013-07-10\2013-07-10_004.xad

Created: 7/10/2013 12:26:53 PM
 Modified: 7/10/2013 6:12:05 PM

Run Logbook

Description	Number	Source	Category	Sub Category	Time	Time Zone	User	Host
Run ended on port 1 (Number of wells acquired: 13)		Instrument	Run		7/10/2013 12:50:40 PM	(GMT --07:00) Pacific Standard Time	UC Davis	D8XSMGH1
Run started on port 1 (File: C:\Documents and Settings\Bioanalyzer\2013-07-10\2013-07-10_004.xad)		Instrument	Run		7/10/2013 12:26:59 PM	(GMT --07:00) Pacific Standard Time	UC Davis	D8XSMGH1
Product Number : G2938B		Instrument	Run		7/10/2013 12:26:59 PM	(GMT --07:00) Pacific Standard Time	UC Davis	D8XSMGH1
Name :		Instrument	Run		7/10/2013 12:26:59 PM	(GMT --07:00) Pacific Standard Time	UC Davis	D8XSMGH1
Vendor : Agilent Technologies		Instrument	Run		7/10/2013 12:26:59 PM	(GMT --07:00) Pacific Standard Time	UC Davis	D8XSMGH1
Serial# : DE13701086		Instrument	Run		7/10/2013 12:26:59 PM	(GMT --07:00) Pacific Standard Time	UC Davis	D8XSMGH1
Firmware : C.01.069		Instrument	Run		7/10/2013 12:26:59 PM	(GMT --07:00) Pacific Standard Time	UC Davis	D8XSMGH1
Cartridge : Electrode		Instrument	Run		7/10/2013 12:26:59 PM	(GMT --07:00) Pacific Standard Time	UC Davis	D8XSMGH1