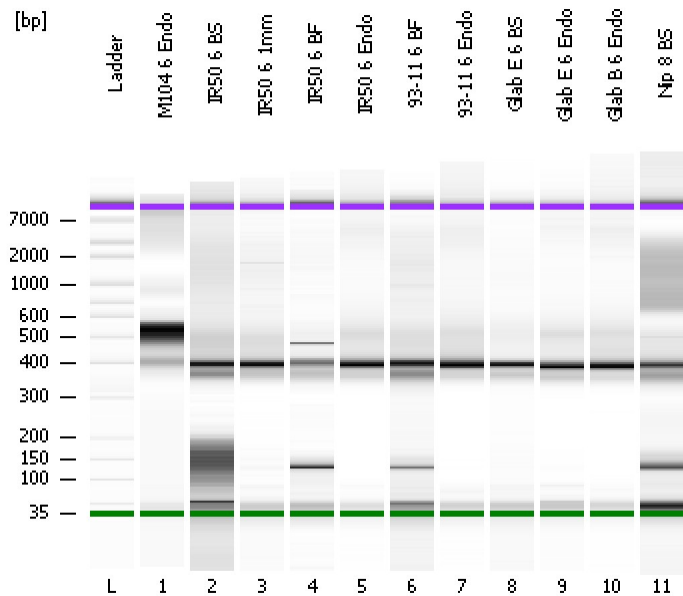


Assay Class: High Sensitivity DNA Assay
Data Path: C:\...ents and Settings\Bioanalyzer\2013-07-10\2013-07-10_007.xad

Created: 7/10/2013 3:54:13 PM
Modified: 7/10/2013 4:36:29 PM

Electrophoresis File Run Summary



Instrument Information:

Instrument Name: DE13701086 Firmware: C.01.069
Serial#: DE13701086 Type: G2938B

Assay Information:

Assay Origin Path: C:\Program Files\Agilent\2100 bioanalyzer\2100 expert\assays\dsDNA\High Sensitivity DNA.xsy
Assay Class: High Sensitivity DNA Assay
Version: 1.03
Assay Comments: Copyright © 2003-2010 Agilent Technologies

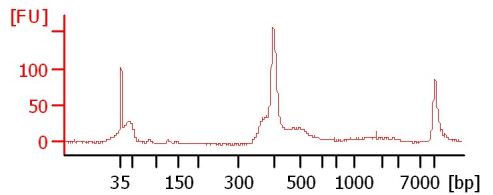
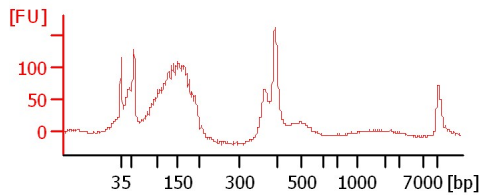
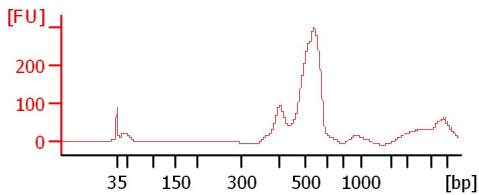
Chip Information:

Chip Lot #:
Reagent Kit Lot #:
Chip Comments:

M104 6 Endo

IR50 6 BS

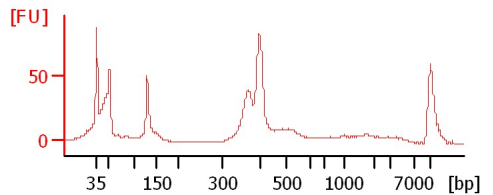
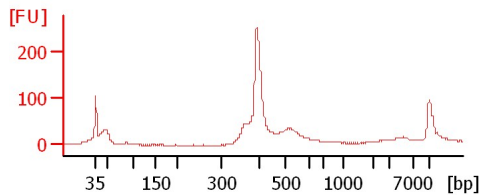
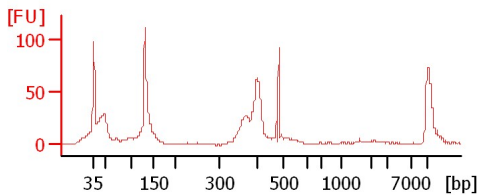
IR50 6 1mm



IR50 6 BF

IR50 6 Endo

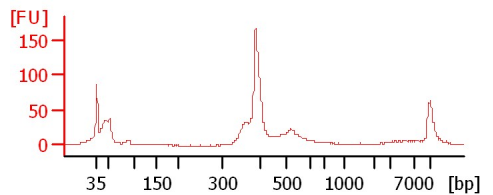
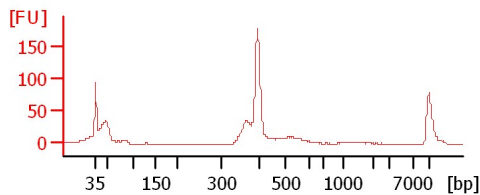
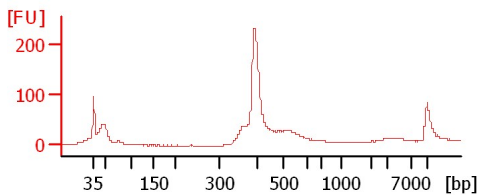
93-11 6 BF



93-11 6 Endo

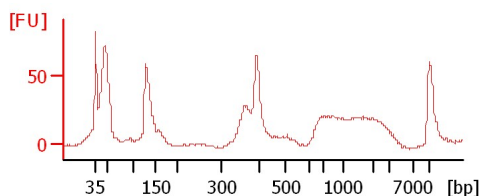
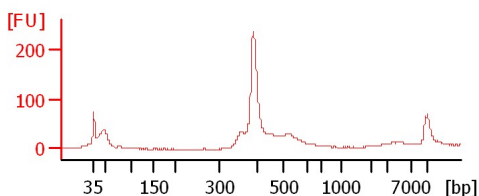
Glab E 6 BS

Glab E 6 Endo



Glab B 6 Endo

Nip 8 BS



Assay Class: High Sensitivity DNA Assay
Data Path: C:\...ents and Settings\Bioanalyzer\2013-07-10\2013-07-10_007.xad

Created: 7/10/2013 3:54:13 PM
Modified: 7/10/2013 4:36:29 PM

Electrophoresis File Run Summary (Chip Summary)

Sample Name	Sample Comment	Rest. Digest	Status	Observation	Result Label	Result Color
M104 6 Endo		<input type="checkbox"/>	✓			
IR50 6 BS		<input type="checkbox"/>	✓			
IR50 6 1mm		<input type="checkbox"/>	✓			
IR50 6 BF		<input type="checkbox"/>	✓			
IR50 6 Endo		<input type="checkbox"/>	✓			
93-11 6 BF		<input type="checkbox"/>	✓			
93-11 6 Endo		<input type="checkbox"/>	✓			
Glab E 6 BS		<input type="checkbox"/>	✓			
Glab E 6 Endo		<input type="checkbox"/>	✓			
Glab B 6 Endo		<input type="checkbox"/>	✓			
Nip 8 BS		<input type="checkbox"/>	✓			
Ladder		<input type="checkbox"/>	✓			

Chip Lot #

Reagent Kit Lot #

Chip Comments :

Assay Class: High Sensitivity DNA Assay
Data Path: C:\...ents and Settings\Bioanalyzer\2013-07-10\2013-07-10_007.xad

Created: 7/10/2013 3:54:13 PM
Modified: 7/10/2013 4:36:29 PM

Electrophoresis Assay Details

General Analysis Settings

Number of Available Sample and Ladder Wells (Max.) : 12
Minimum Visible Range [s] : 32
Maximum Visible Range [s] : 138
Start Analysis Time Range [s] : 33
End Analysis Time Range [s] : 137.5
Ladder Concentration [pg/μl] : 1950
Uses Standard Area for Ladder Fragments
Lower Marker Concentration [pg/μl] : 125
Upper Marker Concentration [pg/μl] : 75
Used Upper Marker for Quantitation
Standard Curve Fit is Point to Point
Show Data Aligned to Lower and Upper Marker

Integrator Settings

Integration Start Time [s] : 33.05
Integration End Time [s] : 137
Slope Threshold : 0.8
Height Threshold [FU] : 5
Area Threshold : 0.1
Width Threshold [s] : 0.6
Baseline Plateau [s] : 0.5

Filter Settings

Filter Width [s] : 0.5
Polynomial Order : 4

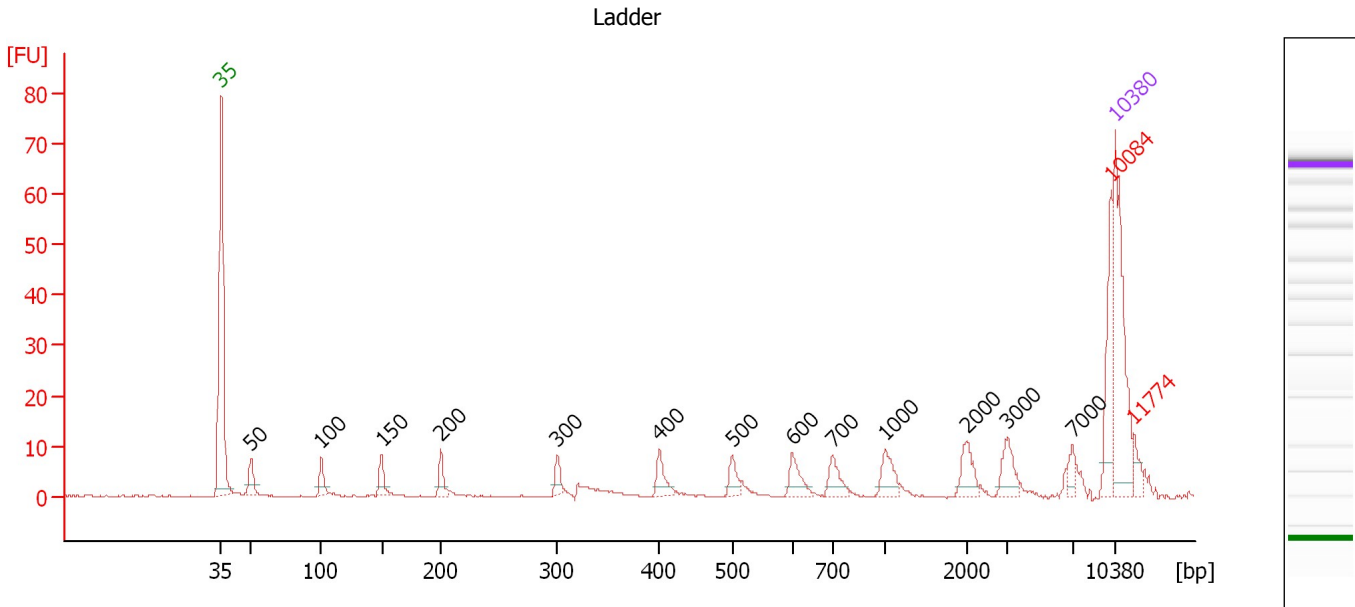
Ladder

Ladder Peak	Size	Area
1	35	160
2	50	210
3	100	208
4	150	221
5	200	242
6	300	270
7	400	305
8	500	306
9	600	336
10	700	321
11	1000	366
12	2000	413
13	3000	411
14	7000	400
15	10380	214

Assay Class: High Sensitivity DNA Assay
 Data Path: C:\...ents and Settings\Bioanalyzer\2013-07-10\2013-07-10_007.xad

Created: 7/10/2013 3:54:13 PM
 Modified: 7/10/2013 4:36:29 PM

Electropherogram Summary



Overall Results for Ladder

Noise: 0.2

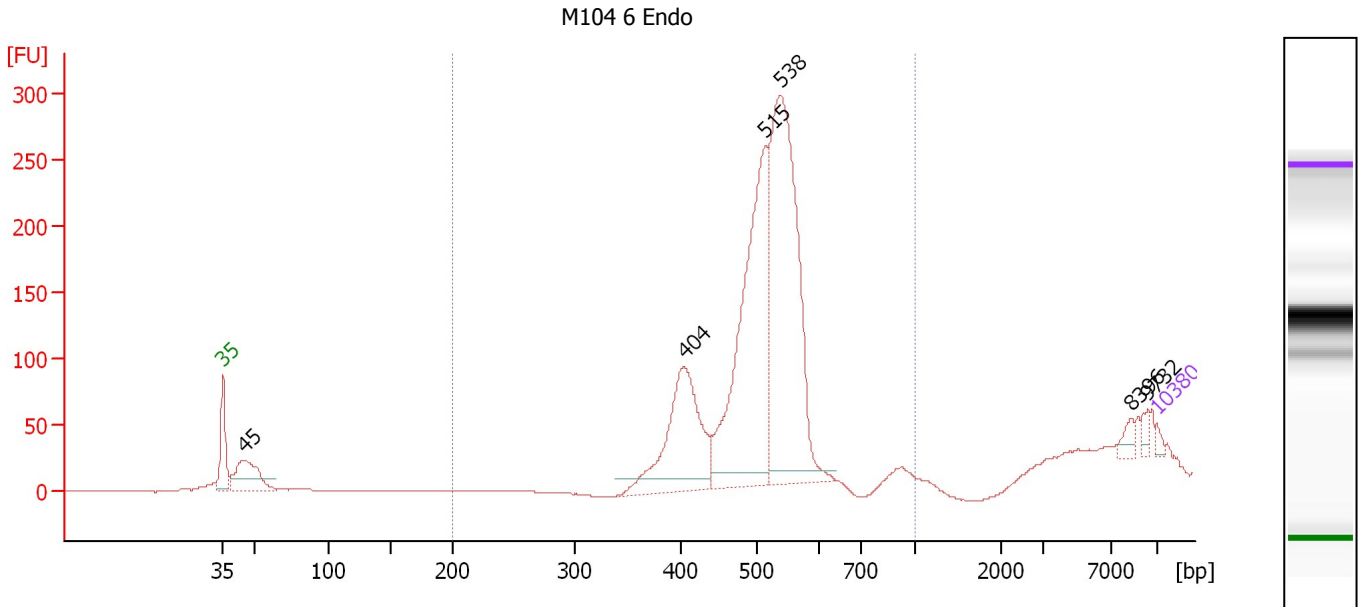
Peak table for Ladder

Peak	Size [bp]	Conc. [pg/μl]	Molarity [pmol/l]	Observations
1	35	125.00	5,411.3	Lower Marker
2	50	150.00	4,545.5	Ladder Peak
3	100	150.00	2,272.7	Ladder Peak
4	150	150.00	1,515.2	Ladder Peak
5	200	150.00	1,136.4	Ladder Peak
6	300	150.00	757.6	Ladder Peak
7	400	150.00	568.2	Ladder Peak
8	500	150.00	454.5	Ladder Peak
9	600	150.00	378.8	Ladder Peak
10	700	150.00	324.7	Ladder Peak
11	1,000	150.00	227.3	Ladder Peak
12	2,000	150.00	113.6	Ladder Peak
13	3,000	150.00	75.8	Ladder Peak
14	7,000	150.00	32.5	Ladder Peak
15	10,084	0.00	0.0	excluded peak
16	10,380	75.00	10.9	Upper Marker
17	11,774	0.00	0.0	excluded peak

Assay Class: High Sensitivity DNA Assay
 Data Path: C:\...ents and Settings\Bioanalyzer\2013-07-10\2013-07-10_007.xad

Created: 7/10/2013 3:54:13 PM
 Modified: 7/10/2013 4:36:29 PM

Electropherogram Summary Continued ...



Setpoint Deviations for sample 1 : M104 6 Endo

Height Threshold [FU] : 10

Overall Results for sample 1 : M104 6 Endo

Number of peaks found: 6 Corr. Area 1: 1,901.8
 Noise: 0.2

Peak table for sample 1 : M104 6 Endo

Peak	Size [bp]	Conc. [pg/μl]	Molarity [pmol/l]	Observations
1	35	125.00	5,411.3	Lower Marker
2	45	1,872.68	63,399.6	
3	404	3,809.80	14,274.7	
4	515	7,183.05	21,146.4	
5	538	8,455.35	23,831.7	
6	8,396	206.84	37.3	
7	9,732	141.13	22.0	
8	10,380	75.00	10.9	Upper Marker

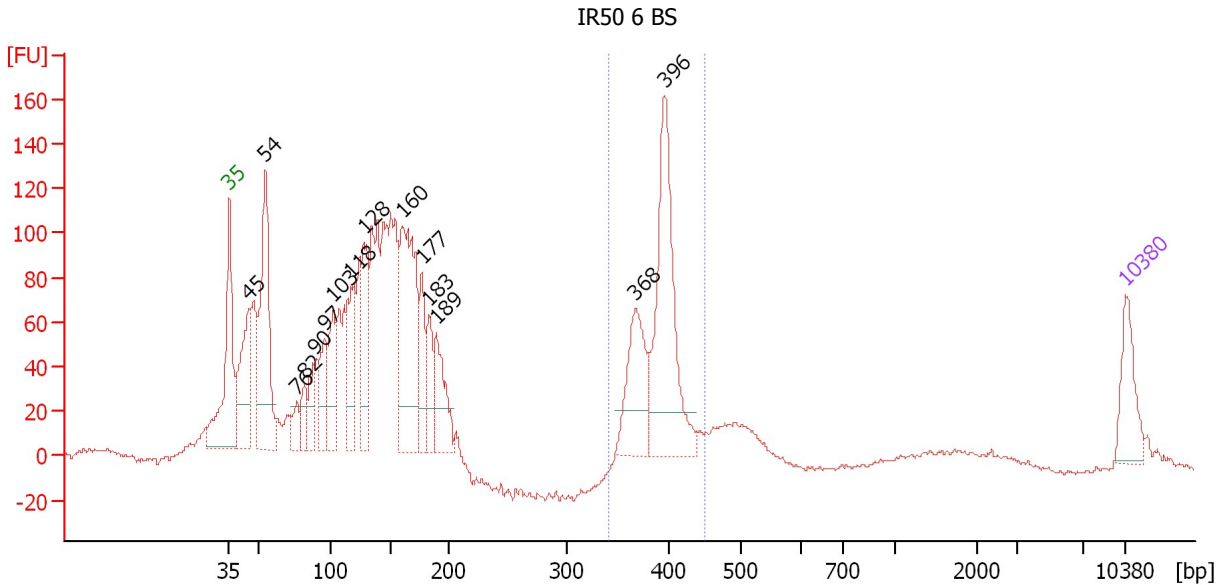
Region table for sample 1 : M104 6 Endo

From [bp]	To [bp]	Average Size [bp]	Molarity [pmol/l]	Conc. [pg/μl]	Corr. Area	% of Total	Size distribution in CV [%]	Color
200	1,000	507	55,999.5	18,406.93	1,901.8	85	12.0	Blue

Assay Class: High Sensitivity DNA Assay
 Data Path: C:\...ents and Settings\Bioanalyzer\2013-07-10\2013-07-10_007.xad

Created: 7/10/2013 3:54:13 PM
 Modified: 7/10/2013 4:36:29 PM

Electropherogram Summary Continued ...



Setpoint Deviations for sample 2 : IR50 6 BS

Height Threshold [FU] : 20

Overall Results for sample 2 : IR50 6 BS

Number of peaks found: 15 Corr. Area 1: 513.4
 Noise: 1.2

Peak table for sample 2 : IR50 6 BS

Peak	Size [bp]	Conc. [pg/μl]	Molarity [pmol/l]	Observations
1	35	125.00	5,411.3	Lower Marker
2	45	257.67	8,646.1	
3	54	425.64	11,836.6	
4	76	49.99	991.4	
5	82	60.55	1,117.8	
6	90	89.02	1,504.9	
7	97	112.61	1,762.4	
8	103	160.38	2,361.7	
9	118	185.46	2,383.4	
10	128	186.63	2,200.7	
11	160	461.15	4,366.6	
12	177	129.80	1,113.4	
13	183	89.24	739.1	
14	189	150.29	1,203.4	
15	368	198.16	816.7	
16	396	429.22	1,640.8	
17	10,380	75.00	10.9	Upper Marker

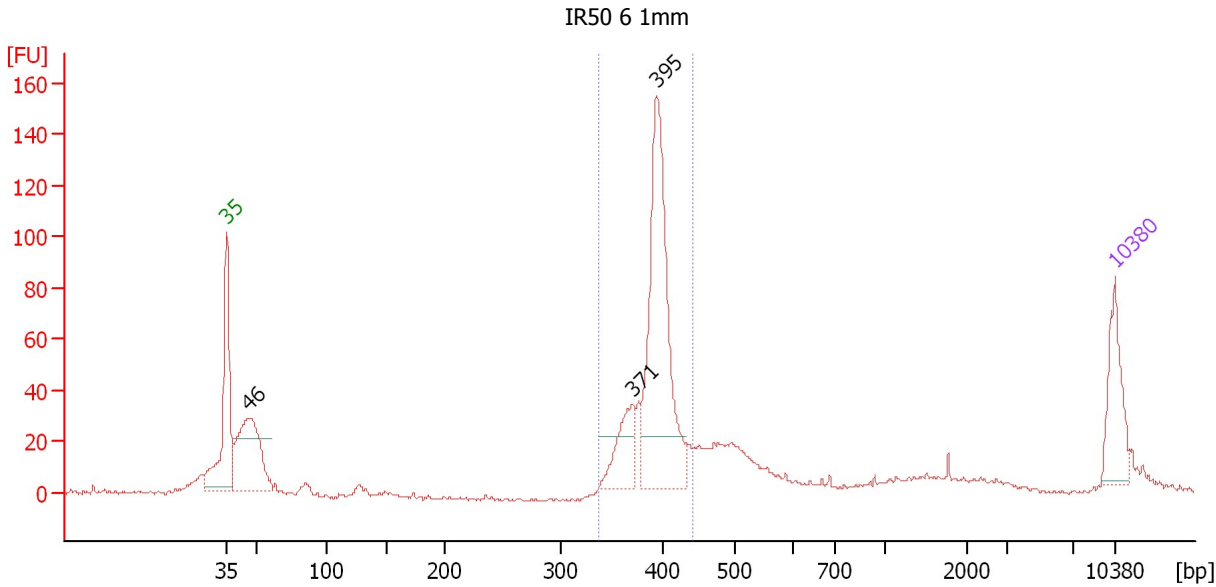
Region table for sample 2 : IR50 6 BS

From [bp]	To [bp]	Average Size [bp]	Molarity [pmol/l]	Conc. [pg/μl]	Corr. Area	% of Total	Size distribution in CV [%]	Color
342	449	391	2,563.1	659.63	513.4	18	5.0	Blue

Assay Class: High Sensitivity DNA Assay
 Data Path: C:\...ents and Settings\Bioanalyzer\2013-07-10\2013-07-10_007.xad

Created: 7/10/2013 3:54:13 PM
 Modified: 7/10/2013 4:36:29 PM

Electropherogram Summary Continued ...



Setpoint Deviations for sample 3 : IR50 6 1mm

Height Threshold [FU] : 20

Overall Results for sample 3 : IR50 6 1mm

Number of peaks found: 3 Corr. Area 1: 460.3
 Noise: 0.8

Peak table for sample 3 : IR50 6 1mm

Peak	Size [bp]	Conc. [pg/μl]	Molarity [pmol/l]	Observations
1	35	125.00	5,411.3	Lower Marker
2	46	260.63	8,524.5	
3	371	94.22	385.1	
4	395	434.17	1,665.7	
5	10,380	75.00	10.9	Upper Marker

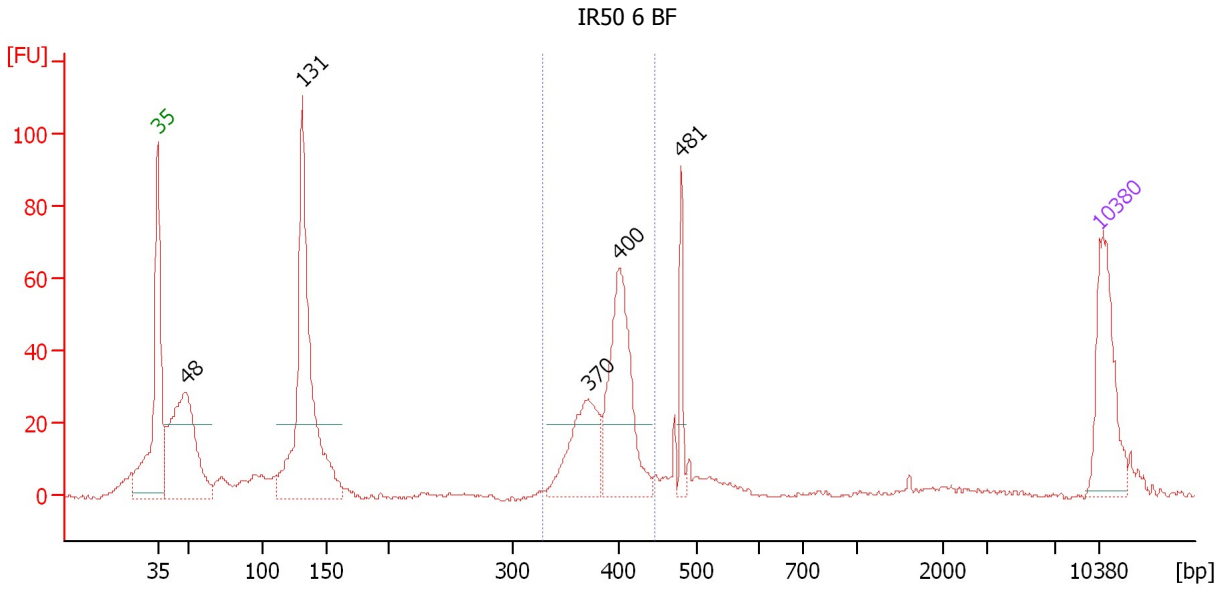
Region table for sample 3 : IR50 6 1mm

From [bp]	To [bp]	Average Size [bp]	Molarity [pmol/l]	Conc. [pg/μl]	Corr. Area	% of Total	Size distribution in CV [%]	Color
338	444	393	2,235.1	578.89	460.3	55	4.9	Blue

Assay Class: High Sensitivity DNA Assay
 Data Path: C:\...ents and Settings\Bioanalyzer\2013-07-10\2013-07-10_007.xad

Created: 7/10/2013 3:54:13 PM
 Modified: 7/10/2013 4:36:29 PM

Electropherogram Summary Continued ...



Setpoint Deviations for sample 4 : IR50 6 BF

Height Threshold [FU] : 20

Overall Results for sample 4 : IR50 6 BF

Number of peaks found: 5 Corr. Area 1: 242.5
 Noise: 0.5

Peak table for sample 4 : IR50 6 BF

Peak	Size [bp]	Conc. [pg/μl]	Molarity [pmol/l]	Observations
1	35	125.00	5,411.3	Lower Marker
2	48	237.29	7,428.7	
3	131	350.53	4,065.9	
4	370	104.02	425.5	
5	400	169.45	642.1	
6	481	35.85	113.0	
7	10,380	75.00	10.9	Upper Marker

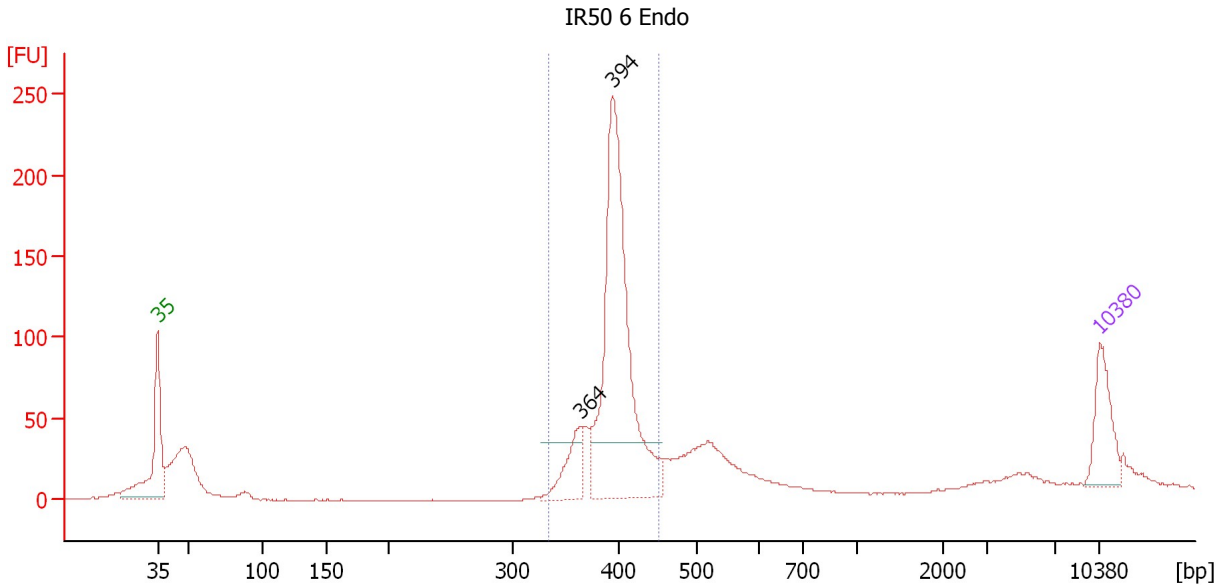
Region table for sample 4 : IR50 6 BF

From [bp]	To [bp]	Average Size [bp]	Molarity [pmol/l]	Conc. [pg/μl]	Corr. Area	% of Total	Size distribution in CV [%]	Color
329	445	390	1,020.9	262.00	242.5	34	5.6	Blue

Assay Class: High Sensitivity DNA Assay
 Data Path: C:\...ents and Settings\Bioanalyzer\2013-07-10\2013-07-10_007.xad

Created: 7/10/2013 3:54:13 PM
 Modified: 7/10/2013 4:36:29 PM

Electropherogram Summary Continued ...



Setpoint Deviations for sample 5 : IR50 6 Endo

Height Threshold [FU] : 35

Overall Results for sample 5 : IR50 6 Endo

Number of peaks found: 2 Corr. Area 1: 740.4
 Noise: 0.3

Peak table for sample 5 : IR50 6 Endo

Peak	Size [bp]	Conc. [pg/µl]	Molarity [pmol/l]	Observations
1	35	125.00	5,411.3	Lower Marker
2	364	92.13	383.5	
3	394	642.80	2,474.7	
4	10,380	75.00	10.9	Upper Marker

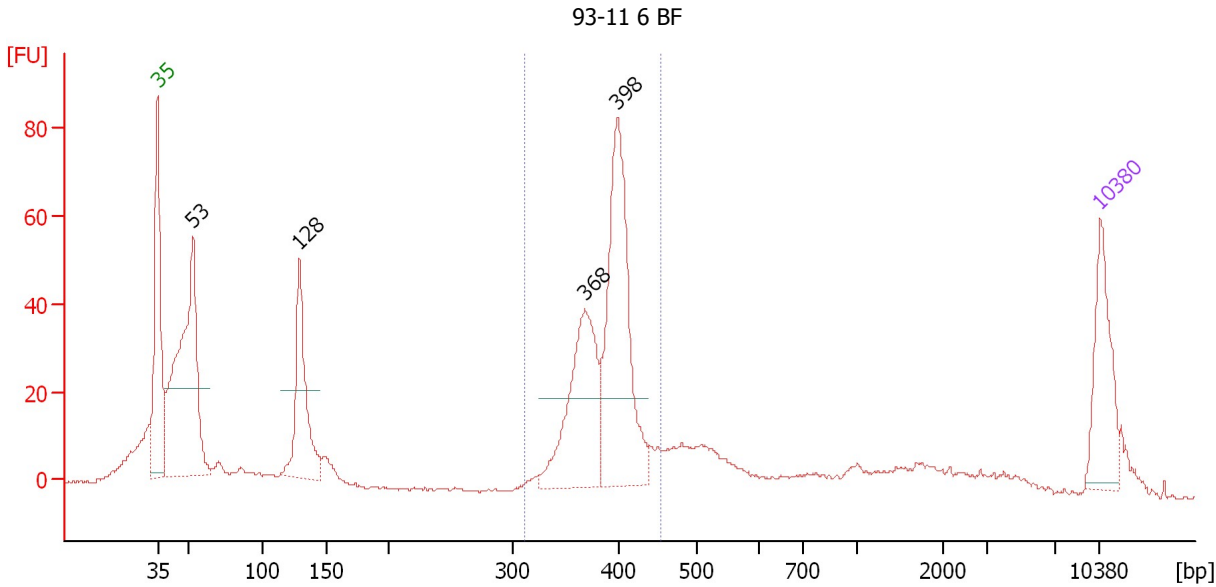
Region table for sample 5 : IR50 6 Endo

From [bp]	To [bp]	Average Size [bp]	Molarity [pmol/l]	Conc. [pg/µl]	Corr. Area	% of Total	Size distribution in CV [%]	Color
333	452	395	2,730.7	710.44	740.4	62	5.1	Blue

Assay Class: High Sensitivity DNA Assay
 Data Path: C:\...ents and Settings\Bioanalyzer\2013-07-10\2013-07-10_007.xad

Created: 7/10/2013 3:54:13 PM
 Modified: 7/10/2013 4:36:29 PM

Electropherogram Summary Continued ...



Setpoint Deviations for sample 6 : 93-11 6 BF

Height Threshold [FU] : 20

Overall Results for sample 6 : 93-11 6 BF

Number of peaks found: 4 Corr. Area 1: 362.1
 Noise: 0.4

Peak table for sample 6 : 93-11 6 BF

Peak	Size [bp]	Conc. [pg/μl]	Molarity [pmol/l]	Observations
1	35	125.00	5,411.3	Lower Marker
2	53	403.86	11,619.5	
3	128	165.92	1,958.4	
4	368	199.68	822.6	
5	398	287.00	1,092.3	
6	10,380	75.00	10.9	Upper Marker

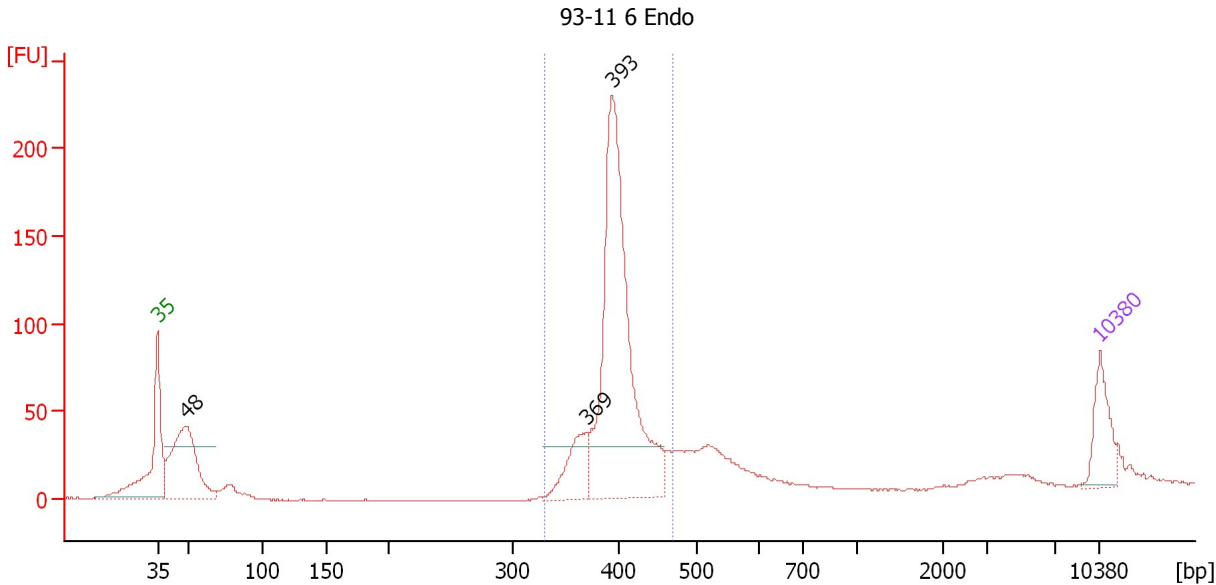
Region table for sample 6 : 93-11 6 BF

From [bp]	To [bp]	Average Size [bp]	Molarity [pmol/l]	Conc. [pg/μl]	Corr. Area	% of Total	Size distribution in CV [%]	Color
312	453	388	2,051.8	523.15	362.1	37	6.6	Blue

Assay Class: High Sensitivity DNA Assay
 Data Path: C:\...ents and Settings\Bioanalyzer\2013-07-10\2013-07-10_007.xad

Created: 7/10/2013 3:54:13 PM
 Modified: 7/10/2013 4:36:29 PM

Electropherogram Summary Continued ...



Setpoint Deviations for sample 7 : 93-11 6 Endo

Height Threshold [FU] : 30

Overall Results for sample 7 : 93-11 6 Endo

Number of peaks found: 3 Corr. Area 1: 743.7
 Noise: 0.2

Peak table for sample 7 : 93-11 6 Endo

Peak	Size [bp]	Conc. [pg/μl]	Molarity [pmol/l]	Observations
1	35	125.00	5,411.3	Lower Marker
2	48	378.02	11,815.2	
3	369	117.63	482.9	
4	393	818.58	3,153.7	
5	10,380	75.00	10.9	Upper Marker

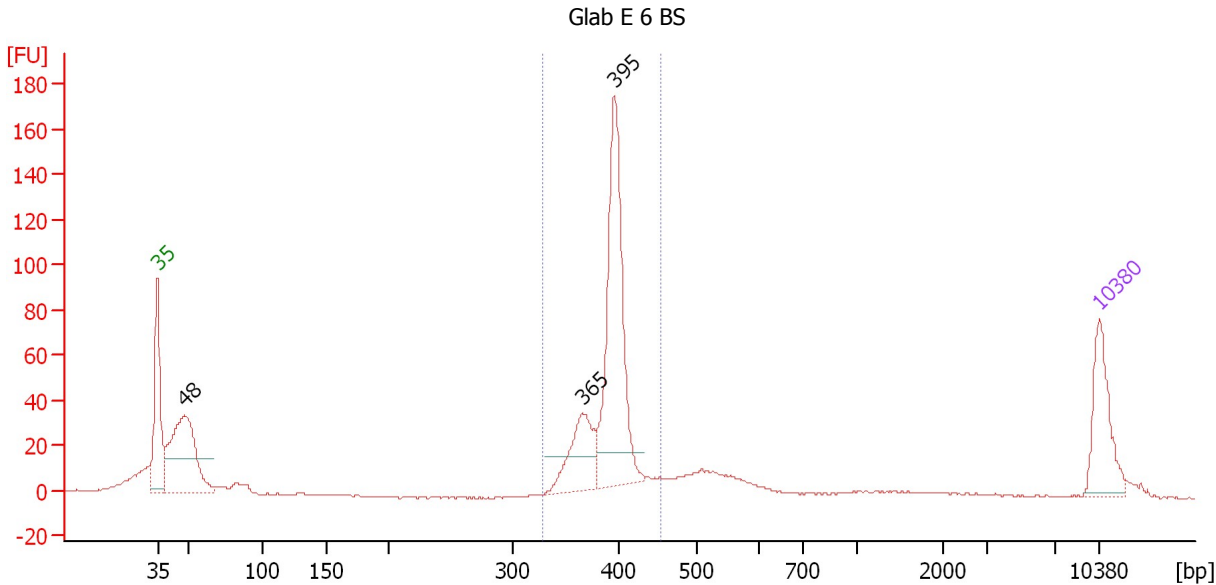
Region table for sample 7 : 93-11 6 Endo

From [bp]	To [bp]	Average Size [bp]	Molarity [pmol/l]	Conc. [pg/μl]	Corr. Area	% of Total	Size distribution in CV [%]	Color
331	471	399	3,442.0	904.20	743.7	60	6.0	Blue

Assay Class: High Sensitivity DNA Assay
 Data Path: C:\...ents and Settings\Bioanalyzer\2013-07-10\2013-07-10_007.xad

Created: 7/10/2013 3:54:13 PM
 Modified: 7/10/2013 4:36:29 PM

Electropherogram Summary Continued ...



Setpoint Deviations for sample 8 : Glab E 6 BS

Height Threshold [FU] : 15

Overall Results for sample 8 : Glab E 6 BS

Number of peaks found: 3 Corr. Area 1: 437.2
 Noise: 0.4

Peak table for sample 8 : Glab E 6 BS

Peak	Size [bp]	Conc. [pg/μl]	Molarity [pmol/l]	Observations
1	35	125.00	5,411.3	Lower Marker
2	48	274.64	8,714.0	
3	365	103.90	431.1	
4	395	327.99	1,257.9	
5	10,380	75.00	10.9	Upper Marker

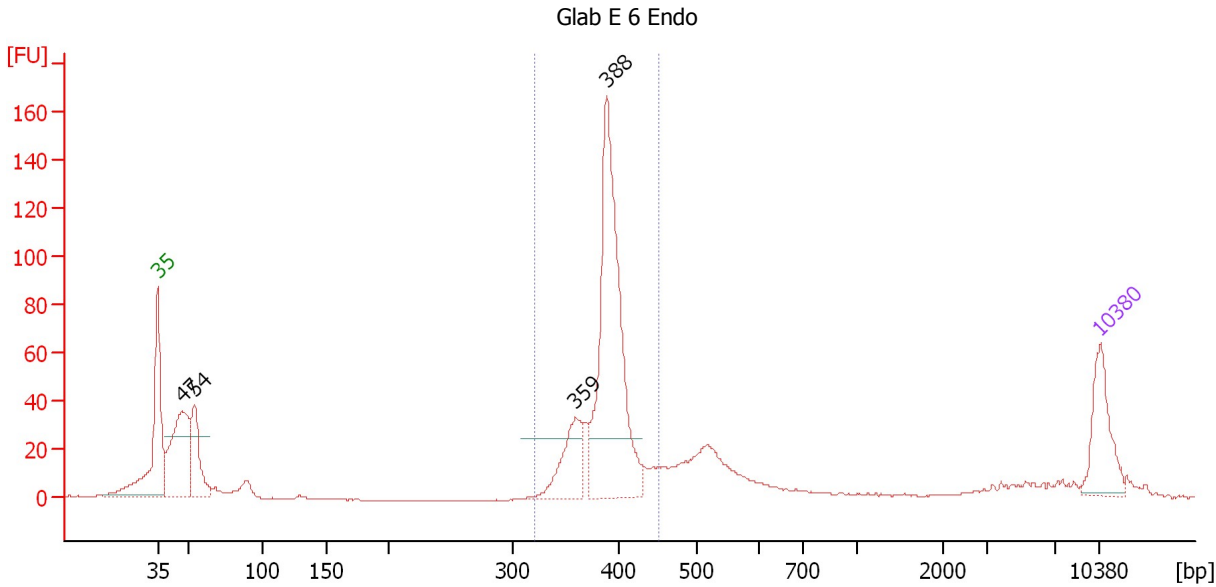
Region table for sample 8 : Glab E 6 BS

From [bp]	To [bp]	Average Size [bp]	Molarity [pmol/l]	Conc. [pg/μl]	Corr. Area	% of Total	Size distribution in CV [%]	Color
328	454	391	1,845.2	475.06	437.2	55	5.0	Blue

Assay Class: High Sensitivity DNA Assay
 Data Path: C:\...ents and Settings\Bioanalyzer\2013-07-10\2013-07-10_007.xad

Created: 7/10/2013 3:54:13 PM
 Modified: 7/10/2013 4:36:29 PM

Electropherogram Summary Continued ...



Setpoint Deviations for sample 9 : Glab E 6 Endo

Height Threshold [FU] : 25

Overall Results for sample 9 : Glab E 6 Endo

Number of peaks found: 4 Corr. Area 1: 486.1
 Noise: 0.2

Peak table for sample 9 : Glab E 6 Endo

Peak	Size [bp]	Conc. [pg/μl]	Molarity [pmol/l]	Observations
1	35	125.00	5,411.3	Lower Marker
2	47	232.88	7,560.2	
3	54	118.34	3,336.1	
4	359	105.26	444.1	
5	388	467.70	1,826.1	
6	10,380	75.00	10.9	Upper Marker

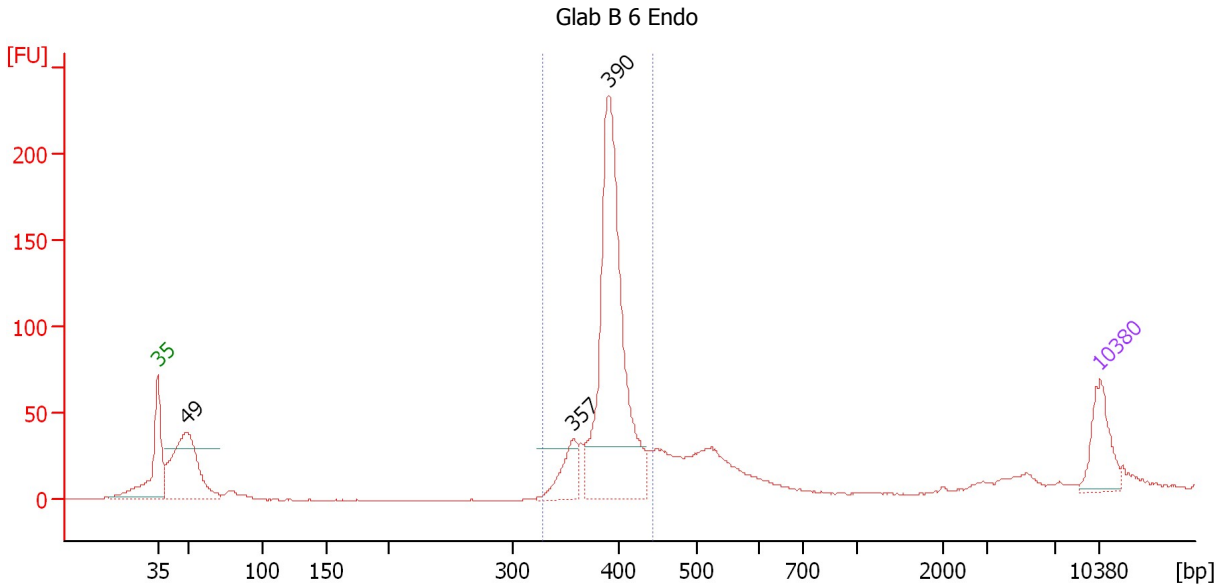
Region table for sample 9 : Glab E 6 Endo

From [bp]	To [bp]	Average Size [bp]	Molarity [pmol/l]	Conc. [pg/μl]	Corr. Area	% of Total	Size distribution in CV [%]	Color
321	452	388	2,408.9	615.75	486.1	53	5.5	Blue

Assay Class: High Sensitivity DNA Assay
 Data Path: C:\...ents and Settings\Bioanalyzer\2013-07-10\2013-07-10_007.xad

Created: 7/10/2013 3:54:13 PM
 Modified: 7/10/2013 4:36:29 PM

Electropherogram Summary Continued ...



Setpoint Deviations for sample 10 : Glab B 6 Endo

Height Threshold [FU] : 30

Overall Results for sample 10 : Glab B 6 Endo

Number of peaks found: 3 Corr. Area 1: 668.7
 Noise: 0.2

Peak table for sample 10 : Glab B 6 Endo

Peak	Size [bp]	Conc. [pg/μl]	Molarity [pmol/l]	Observations
1	35	125.00	5,411.3	Lower Marker
2	49	339.20	10,536.3	
3	357	83.98	356.7	
4	390	693.02	2,693.5	
5	10,380	75.00	10.9	Upper Marker

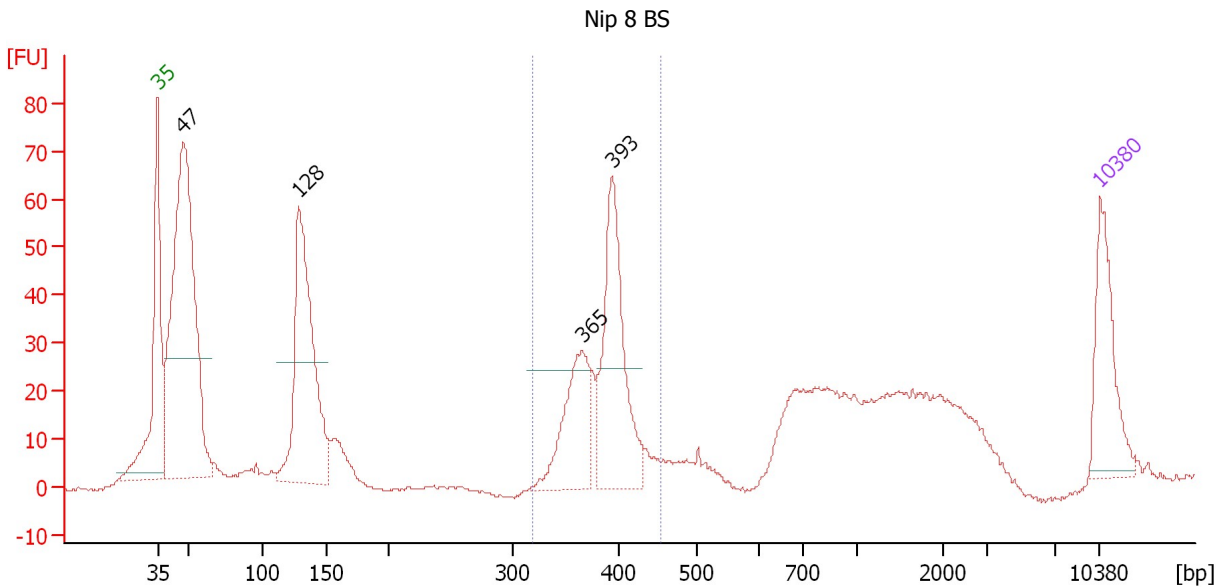
Region table for sample 10 : Glab B 6 Endo

From [bp]	To [bp]	Average Size [bp]	Molarity [pmol/l]	Conc. [pg/μl]	Corr. Area	% of Total	Size distribution in CV [%]	Color
329	445	391	3,034.6	782.19	668.7	56	5.0	Blue

Assay Class: High Sensitivity DNA Assay
 Data Path: C:\...ents and Settings\Bioanalyzer\2013-07-10\2013-07-10_007.xad

Created: 7/10/2013 3:54:13 PM
 Modified: 7/10/2013 4:36:29 PM

Electropherogram Summary Continued ...



Setpoint Deviations for sample 11 : Nip 8 BS

Height Threshold [FU] : 25

Overall Results for sample 11 : Nip 8 BS

Number of peaks found: 4 Corr. Area 1: 233.8
 Noise: 0.4

Peak table for sample 11 : Nip 8 BS

Peak	Size [bp]	Conc. [pg/μl]	Molarity [pmol/l]	Observations
1	35	125.00	5,411.3	Lower Marker
2	47	592.48	19,008.0	
3	128	324.10	3,839.3	
4	365	120.75	501.1	
5	393	197.85	762.8	
6	10,380	75.00	10.9	Upper Marker

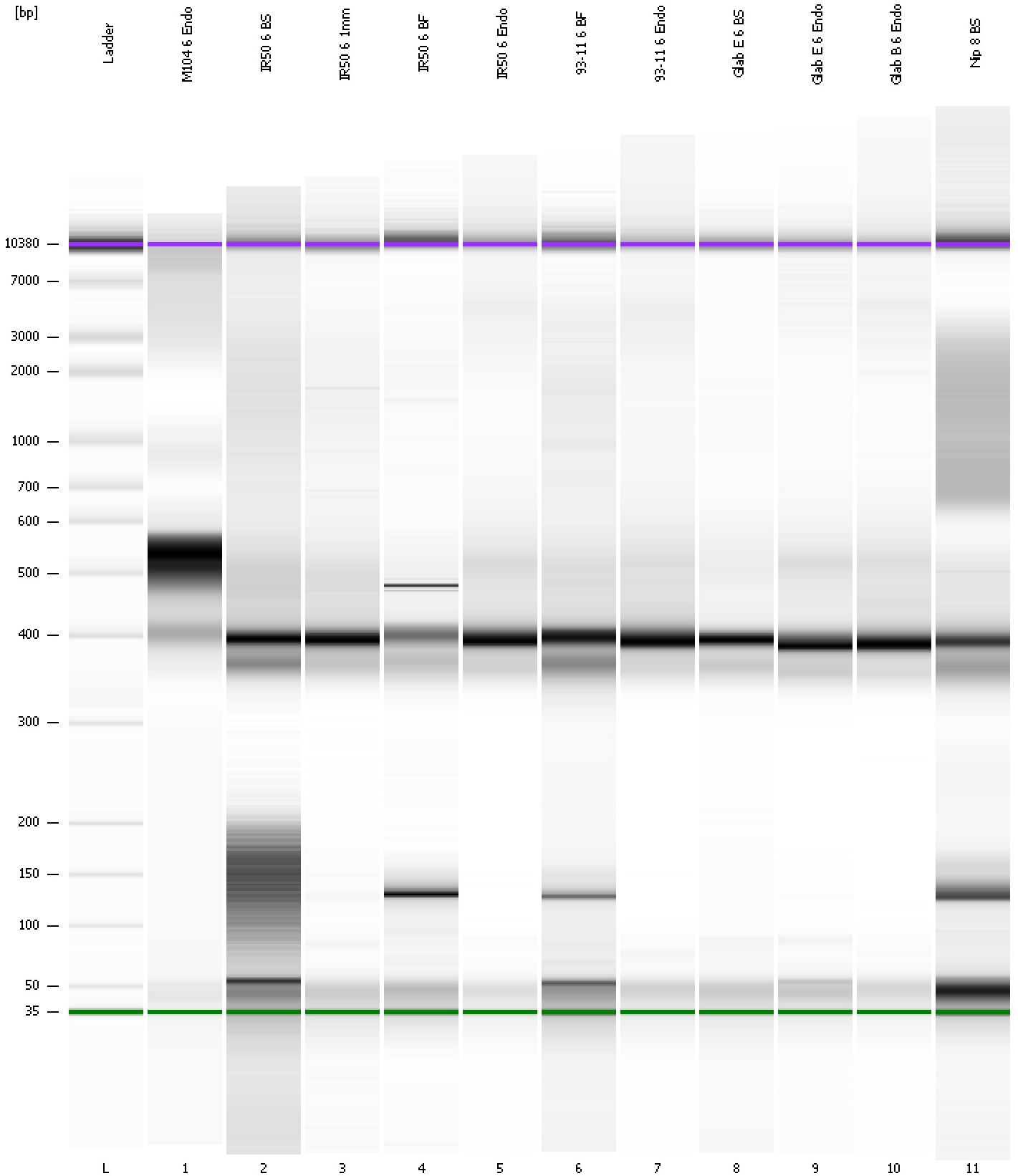
Region table for sample 11 : Nip 8 BS

From [bp]	To [bp]	Average Size [bp]	Molarity [pmol/l]	Conc. [pg/μl]	Corr. Area	% of Total	Size distribution in CV [%]	Color
319	454	385	1,256.6	318.77	233.8	22	5.9	Blue

Assay Class: High Sensitivity DNA Assay
Data Path: C:\...ents and Settings\Bioanalyzer\2013-07-10\2013-07-10_007.xad

Created: 7/10/2013 3:54:13 PM
Modified: 7/10/2013 4:36:29 PM

Gel Image



Assay Class: High Sensitivity DNA Assay
 Data Path: C:\...ents and Settings\Bioanalyzer\2013-07-10\2013-07-10_007.xad

Created: 7/10/2013 3:54:13 PM
 Modified: 7/10/2013 4:36:29 PM

Run Logbook

Description	Number	Source	Category	Sub Category	Time	Time Zone	User	Host
Run ended on port 1 (Number of wells acquired: 12)		Instrument	Run		7/10/2013 4:34:42 PM	(GMT --07:00) Pacific Standard Time	UC Davis	D8XSMGH1
Run started on port 1 (File: C:\Documents and Settings\Bioanalyzer\2013-07-10\2013-07-10_007.xad)		Instrument	Run		7/10/2013 3:54:19 PM	(GMT --07:00) Pacific Standard Time	UC Davis	D8XSMGH1
Product Number : G2938B		Instrument	Run		7/10/2013 3:54:19 PM	(GMT --07:00) Pacific Standard Time	UC Davis	D8XSMGH1
Name :		Instrument	Run		7/10/2013 3:54:19 PM	(GMT --07:00) Pacific Standard Time	UC Davis	D8XSMGH1
Vendor : Agilent Technologies		Instrument	Run		7/10/2013 3:54:19 PM	(GMT --07:00) Pacific Standard Time	UC Davis	D8XSMGH1
Serial# : DE13701086		Instrument	Run		7/10/2013 3:54:19 PM	(GMT --07:00) Pacific Standard Time	UC Davis	D8XSMGH1
Firmware : C.01.069		Instrument	Run		7/10/2013 3:54:19 PM	(GMT --07:00) Pacific Standard Time	UC Davis	D8XSMGH1
Cartridge : Electrode		Instrument	Run		7/10/2013 3:54:19 PM	(GMT --07:00) Pacific Standard Time	UC Davis	D8XSMGH1