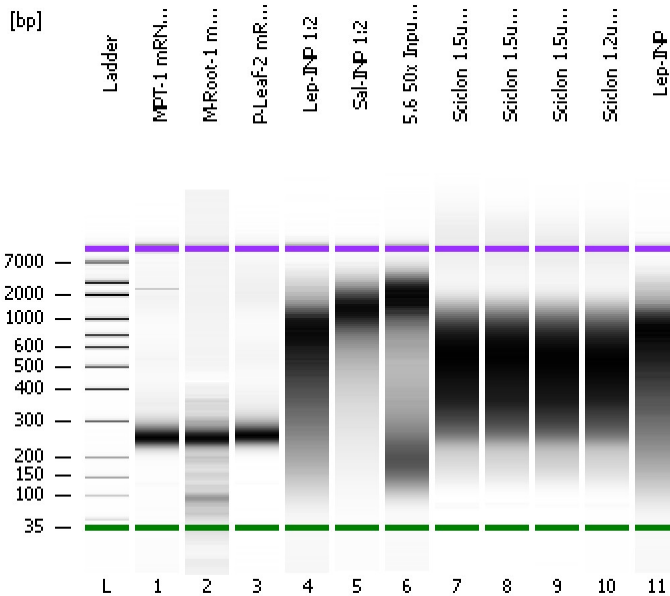


Assay Class: High Sensitivity DNA Assay  
Data Path: C:\...ents and Settings\Bioanalyzer\2013-07-15\2013-07-15\_001.xad

Created: 7/15/2013 11:31:12 AM  
Modified: 7/15/2013 12:21:10 PM

**Electrophoresis File Run Summary**



Instrument Information:

Instrument Name: DE13701086      Firmware: C.01.069  
Serial#: DE13701086      Type: G2938B

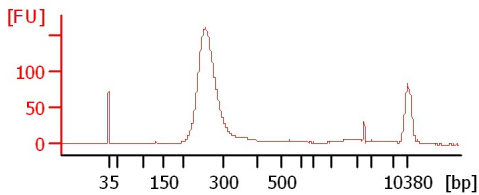
Assay Information:

Assay Origin Path: C:\Program Files\Agilent\2100 bioanalyzer\2100 expert\assays\dsDNA\High Sensitivity DNA.xsy  
Assay Class: High Sensitivity DNA Assay  
Version: 1.03  
Assay Comments: Copyright © 2003-2010 Agilent Technologies

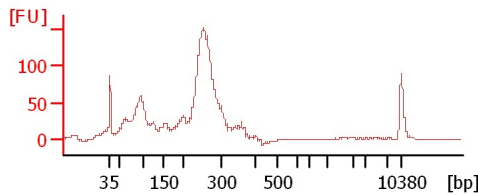
Chip Information:

Chip Lot #:   
Reagent Kit Lot #:   
Chip Comments:

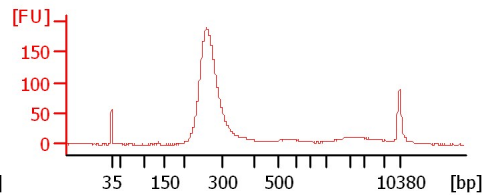
**MPT-1 mRNA Lib 1:2**



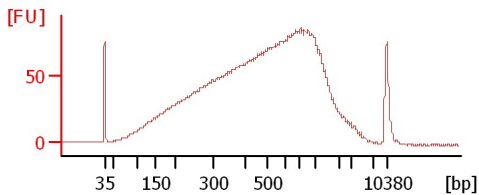
**M-Root-1 mRNA Lib 1:2**



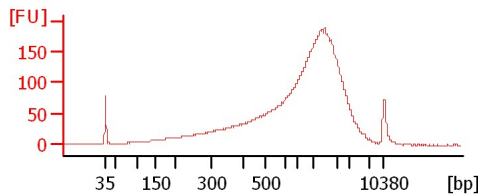
**P-Leaf-2 mRNA Lib 1:2**



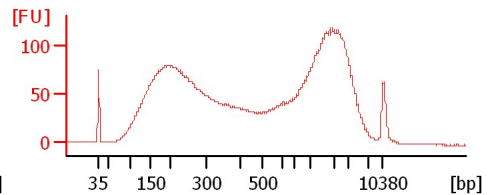
**Lep-INP 1:2**



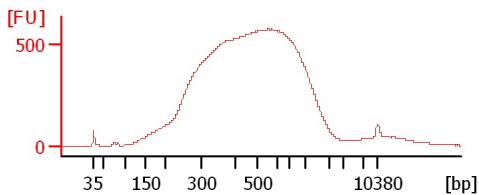
**Sal-INP 1:2**



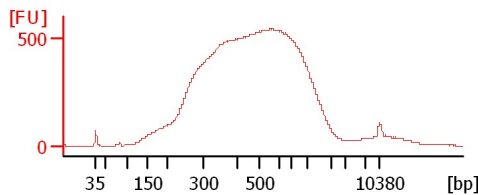
**5.6 50x Input 1:15**



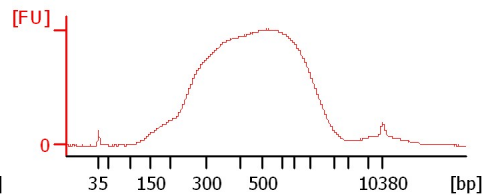
**Sciclom 1.5ug-0.5uM G1**



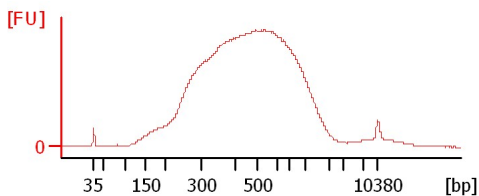
**Sciclom 1.5ug-15uM H1**



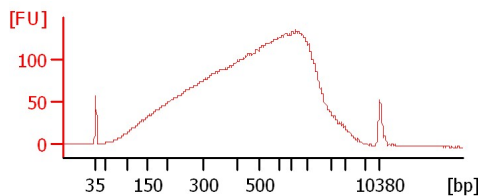
**Sciclom 1.5ug-0.5uM G2**



**Sciclom 1.2ug-15uM H2**



**Lep-INP**



Assay Class: High Sensitivity DNA Assay  
 Data Path: C:\...ents and Settings\Bioanalyzer\2013-07-15\2013-07-15\_001.xad

Created: 7/15/2013 11:31:12 AM  
 Modified: 7/15/2013 12:21:10 PM

**Electrophoresis File Run Summary (Chip Summary)**

Sample Name	Sample Comment	Rest. Digest	Status	Observation	Result Label	Result Color
MPT-1 mRNA Lib 1:2		<input type="checkbox"/>	✓			
M-Root-1 mRNA Lib 1:2		<input type="checkbox"/>	✓			
P-Leaf-2 mRNA Lib 1:2		<input type="checkbox"/>	✓			
Lep-INP 1:2		<input type="checkbox"/>	✓			
Sal-INP 1:2		<input type="checkbox"/>	✓			
5.6 50x Input 1:15		<input type="checkbox"/>	✓			
Sciclone 1.5ug-0.5uM G1		<input type="checkbox"/>	✓			
Sciclone 1.5ug-15uM H1		<input type="checkbox"/>	✓			
Sciclone 1.5ug-0.5uM G2		<input type="checkbox"/>	✓			
Sciclone 1.2ug-15uM H2		<input type="checkbox"/>	✓			
Lep-INP		<input type="checkbox"/>	✓			
Ladder		<input type="checkbox"/>	✓			

**Chip Lot #**

**Reagent Kit Lot #**

**Chip Comments :**

Assay Class: High Sensitivity DNA Assay  
Data Path: C:\...ents and Settings\Bioanalyzer\2013-07-15\2013-07-15\_001.xad

Created: 7/15/2013 11:31:12 AM  
Modified: 7/15/2013 12:21:10 PM

**Electrophoresis Assay Details**

**General Analysis Settings**

Number of Available Sample and Ladder Wells (Max.) : 12  
Minimum Visible Range [s] : 32  
Maximum Visible Range [s] : 138  
Start Analysis Time Range [s] : 33  
End Analysis Time Range [s] : 137.5  
Ladder Concentration [pg/μl] : 1950  
Uses Standard Area for Ladder Fragments  
Lower Marker Concentration [pg/μl] : 125  
Upper Marker Concentration [pg/μl] : 75  
Used Upper Marker for Quantitation  
Standard Curve Fit is Point to Point  
Show Data Aligned to Lower and Upper Marker

**Integrator Settings**

Integration Start Time [s] : 33.05  
Integration End Time [s] : 137  
Slope Threshold : 0.8  
Height Threshold [FU] : 5  
Area Threshold : 0.1  
Width Threshold [s] : 0.6  
Baseline Plateau [s] : 0.5

**Filter Settings**

Filter Width [s] : 0.5  
Polynomial Order : 4

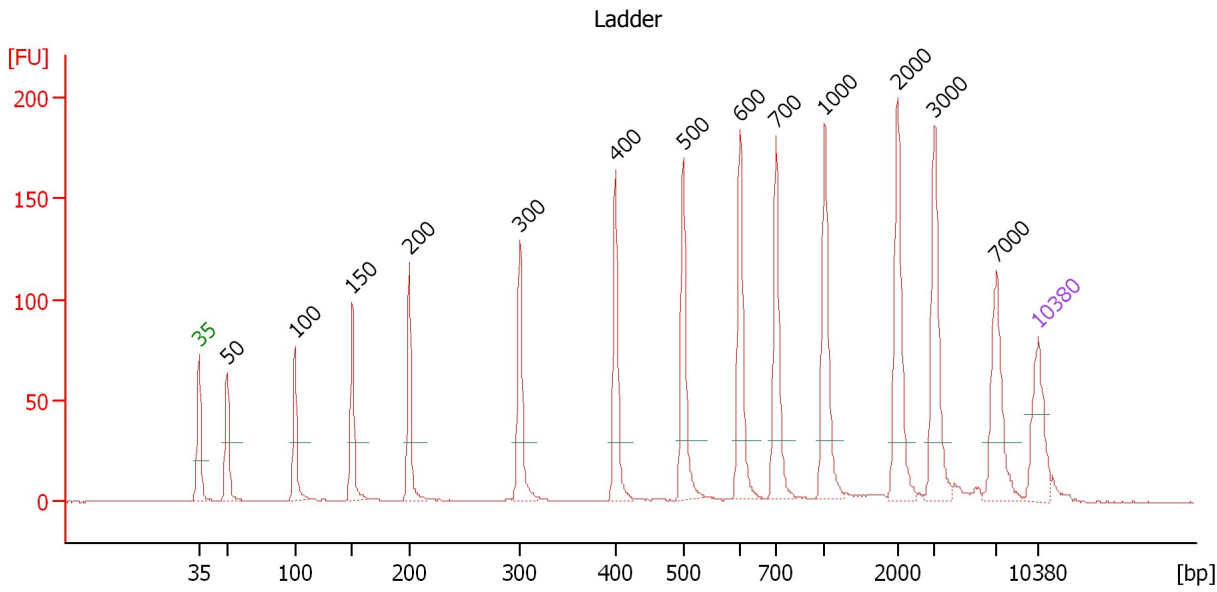
**Ladder**

Ladder Peak	Size	Area
1	35	160
2	50	210
3	100	208
4	150	221
5	200	242
6	300	270
7	400	305
8	500	306
9	600	336
10	700	321
11	1000	366
12	2000	413
13	3000	411
14	7000	400
15	10380	214

Assay Class: High Sensitivity DNA Assay  
 Data Path: C:\...ents and Settings\Bioanalyzer\2013-07-15\2013-07-15\_001.xad

Created: 7/15/2013 11:31:12 AM  
 Modified: 7/15/2013 12:21:10 PM

**Electropherogram Summary**



**Overall Results for Ladder**

Noise: 0.1

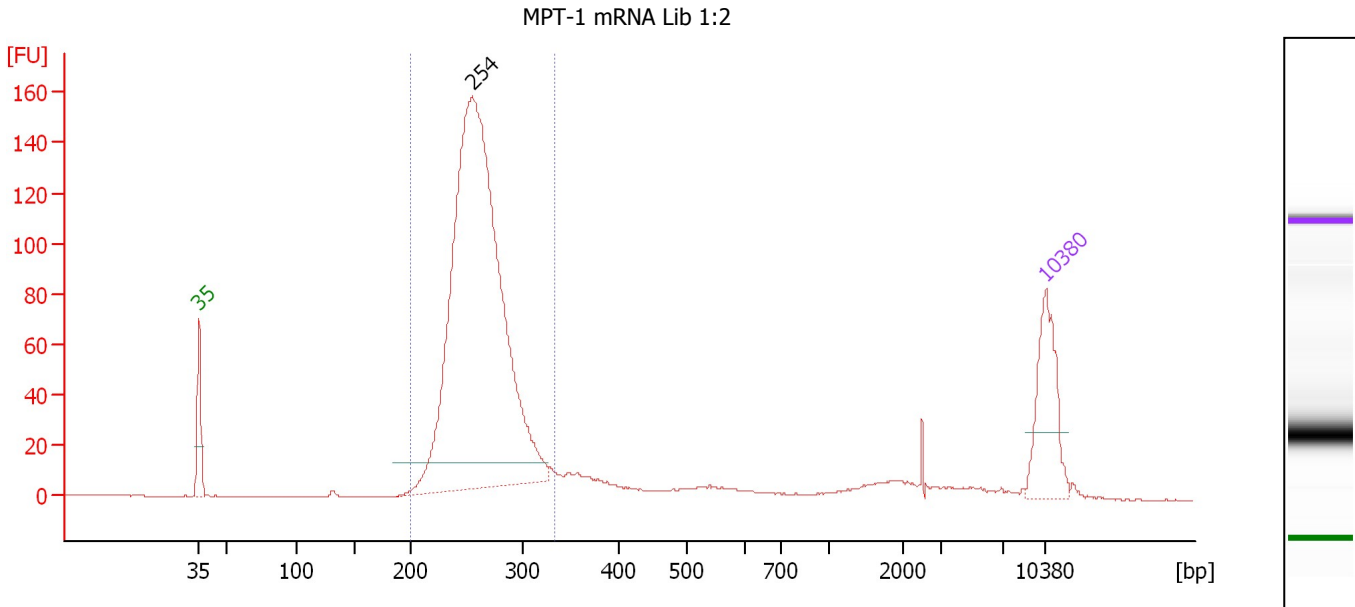
**Peak table for Ladder**

Peak	Size [bp]	Conc. [pg/μl]	Molarity [pmol/l]	Observations
1	35	125.00	5,411.3	Lower Marker
2	50	150.00	4,545.5	Ladder Peak
3	100	150.00	2,272.7	Ladder Peak
4	150	150.00	1,515.2	Ladder Peak
5	200	150.00	1,136.4	Ladder Peak
6	300	150.00	757.6	Ladder Peak
7	400	150.00	568.2	Ladder Peak
8	500	150.00	454.5	Ladder Peak
9	600	150.00	378.8	Ladder Peak
10	700	150.00	324.7	Ladder Peak
11	1,000	150.00	227.3	Ladder Peak
12	2,000	150.00	113.6	Ladder Peak
13	3,000	150.00	75.8	Ladder Peak
14	7,000	150.00	32.5	Ladder Peak
15	10,380	75.00	10.9	Upper Marker

Assay Class: High Sensitivity DNA Assay  
 Data Path: C:\...ents and Settings\Bioanalyzer\2013-07-15\2013-07-15\_001.xad

Created: 7/15/2013 11:31:12 AM  
 Modified: 7/15/2013 12:21:10 PM

**Electropherogram Summary Continued ...**



**Setpoint Deviations for sample 1 : MPT-1 mRNA Lib 1:2**

Height Threshold [FU] : 10

**Overall Results for sample 1 : MPT-1 mRNA Lib 1:2**

Number of peaks found: 1                      Corr. Area 1: 1,244.4  
 Noise: 0.1

**Peak table for sample 1 : MPT-1 mRNA Lib 1:2**

Peak	Size [bp]	Conc. [pg/μl]	Molarity [pmol/l]	Observations
1	35	125.00	5,411.3	Lower Marker
2	254	1,063.74	6,339.4	
3	10,380	75.00	10.9	Upper Marker

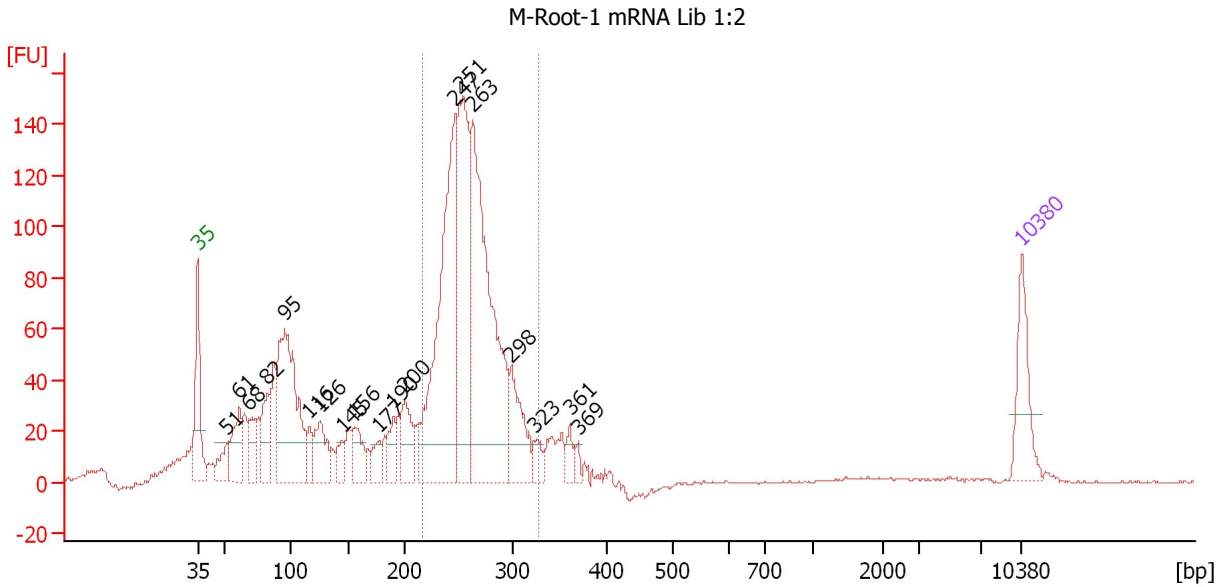
**Region table for sample 1 : MPT-1 mRNA Lib 1:2**

From [bp]	To [bp]	Average Size [bp]	Molarity [pmol/l]	Conc. [pg/μl]	Corr. Area	% of Total	Size distribution in CV [%]	Color
200	334	262	6,474.7	1,113.66	1,244.4	86	8.8	Blue

Assay Class: High Sensitivity DNA Assay  
 Data Path: C:\...ents and Settings\Bioanalyzer\2013-07-15\2013-07-15\_001.xad

Created: 7/15/2013 11:31:12 AM  
 Modified: 7/15/2013 12:21:10 PM

**Electropherogram Summary Continued ...**



**Setpoint Deviations for sample 2 : M-Root-1 mRNA Lib 1:2**

Height Threshold [FU] : 15

**Overall Results for sample 2 : M-Root-1 mRNA Lib 1:2**

Number of peaks found: 19                      Corr. Area 1: 1,158.4  
 Noise: 0.4

**Peak table for sample 2 : M-Root-1 mRNA Lib 1:2**

Peak	Size [bp]	Conc. [pg/μl]	Molarity [pmol/l]	Observations
1	35	125.00	5,411.3	Lower Marker
2	51	54.91	1,625.9	
3	61	102.89	2,564.3	
4	68	61.81	1,377.0	
5	82	100.97	1,874.1	
6	95	408.61	6,526.3	
7	116	44.60	584.4	
8	126	92.91	1,121.3	
9	145	36.64	383.2	
10	156	70.27	683.5	
11	177	37.87	324.8	
12	190	48.15	383.0	
13	200	93.94	709.9	
14	247	559.49	3,438.9	
15	251	381.96	2,302.0	
16	263	622.96	3,586.9	
17	298	122.68	624.0	
18	323	28.32	133.0	
19	361	23.73	99.7	
20	369	12.59	51.7	
21	10,380	75.00	10.9	Upper Marker

Assay Class: High Sensitivity DNA Assay  
Data Path: C:\...ents and Settings\Bioanalyzer\2013-07-15\2013-07-15\_001.xad

Created: 7/15/2013 11:31:12 AM  
Modified: 7/15/2013 12:21:10 PM

**Electropherogram Summary Continued ...**

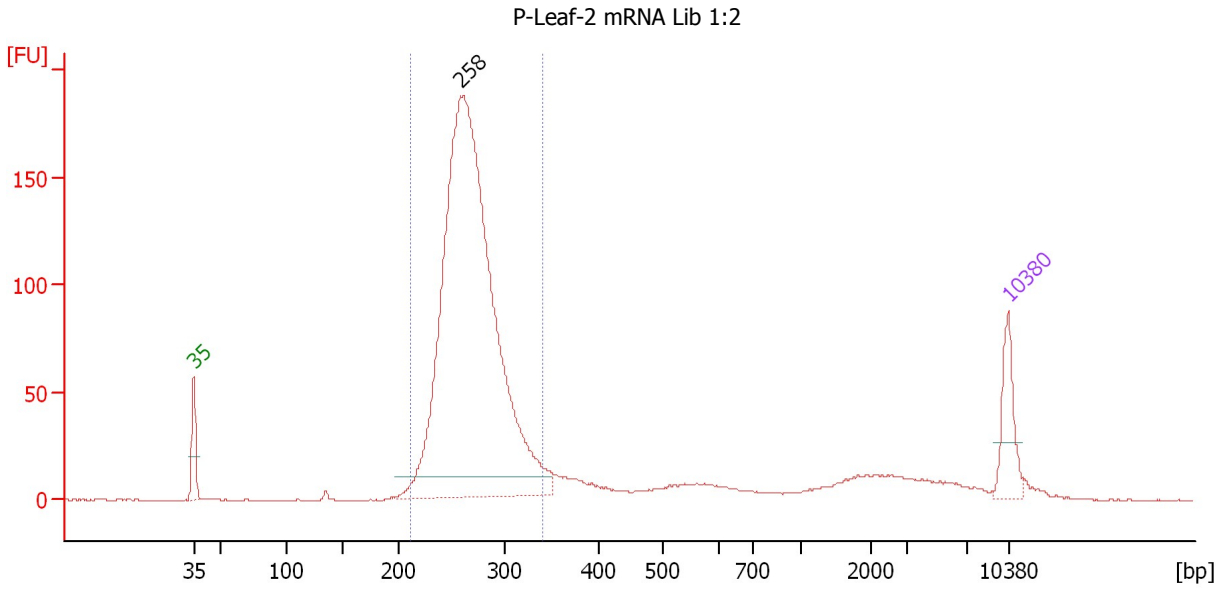
... Region table for sample 2 : **M-Root-1 mRNA Lib 1:2**

<b>From [bp]</b>	<b>To [bp]</b>	<b>Average Size [bp]</b>	<b>Molarity [pmol/l]</b>	<b>Conc. [pg/μl]</b>	<b>Corr. Area</b>	<b>% of Total</b>	<b>Size distribution in CV [%]</b>	<b>Co lor</b>
217	328	261	9,701.8	1,666.95	1,158.4	54	8.8	

Assay Class: High Sensitivity DNA Assay  
 Data Path: C:\...ents and Settings\Bioanalyzer\2013-07-15\2013-07-15\_001.xad

Created: 7/15/2013 11:31:12 AM  
 Modified: 7/15/2013 12:21:10 PM

**Electropherogram Summary Continued ...**



**Setpoint Deviations for sample 3 : P-Leaf-2 mRNA Lib 1:2**

Height Threshold [FU] : 10

**Overall Results for sample 3 : P-Leaf-2 mRNA Lib 1:2**

Number of peaks found: 1                      Corr. Area 1: 1,467.0  
 Noise: 0.2

**Peak table for sample 3 : P-Leaf-2 mRNA Lib 1:2**

Peak	Size [bp]	Conc. [pg/μl]	Molarity [pmol/l]	Observations
1	35	125.00	5,411.3	Lower Marker
2	258	2,079.51	12,195.3	
3	10,380	75.00	10.9	Upper Marker

**Region table for sample 3 : P-Leaf-2 mRNA Lib 1:2**

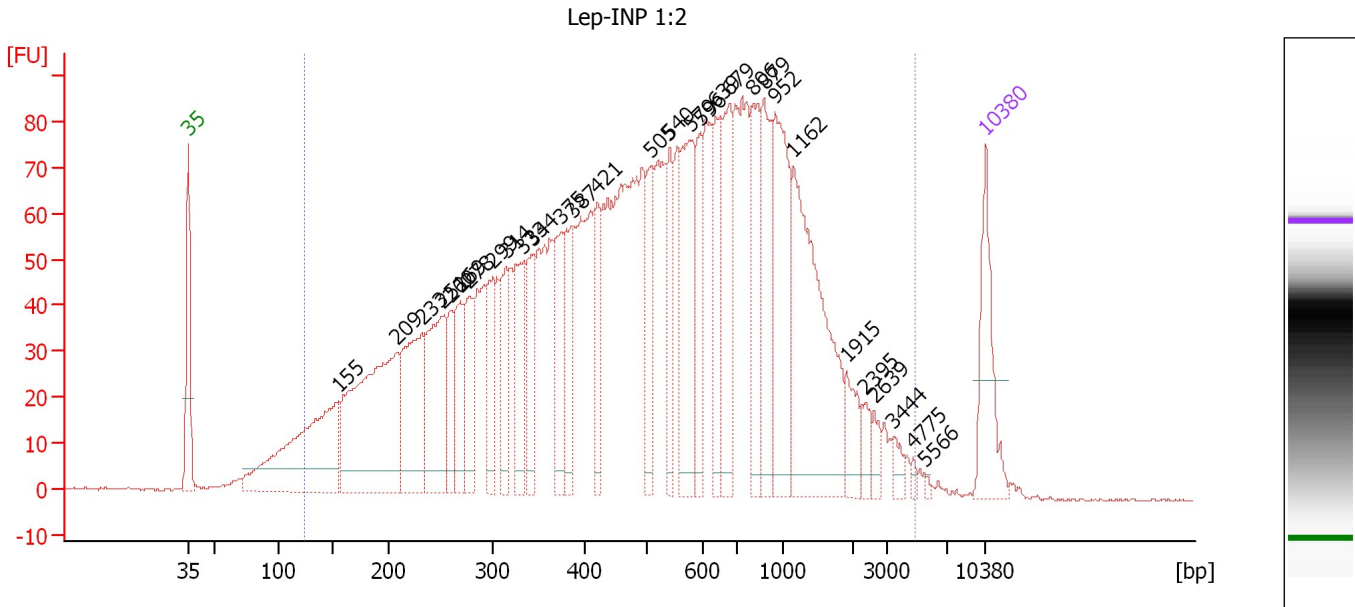
From [bp]	To [bp]	Average Size [bp]	Molarity [pmol/l]	Conc. [pg/μl]	Corr. Area	% of Total	Size distribution in CV [%]	Color
211	340	268	11,488.4	2,024.36	1,467.0	82	8.9	Blue



Assay Class: High Sensitivity DNA Assay  
 Data Path: C:\...ents and Settings\Bioanalyzer\2013-07-15\2013-07-15\_001.xad

Created: 7/15/2013 11:31:12 AM  
 Modified: 7/15/2013 12:21:10 PM

**Electropherogram Summary Continued ...**



**Overall Results for sample 4 : Lep-INT 1:2**

Number of peaks found: 30      Corr. Area 1: 3,343.1  
 Noise: 0.3

**Peak table for sample 4 : Lep-INT 1:2**

Peak	Size [bp]	Conc. [pg/μl]	Molarity [pmol/l]	Observations
1	35	125.00	5,411.3	Lower Marker
2	155	316.30	3,101.2	
3	209	378.53	2,745.9	
4	233	183.59	1,195.7	
5	251	174.44	1,051.5	
6	260	63.80	371.9	
7	269	88.02	495.7	
8	278	84.27	459.9	
9	299	68.26	345.4	
10	314	83.10	401.0	
11	333	96.89	441.1	
12	344	77.87	343.0	
13	375	94.31	381.5	
14	387	88.78	347.1	
15	421	66.67	239.7	
16	505	76.12	228.5	
17	540	74.50	208.9	
18	579	151.72	397.3	
19	596	67.59	171.7	
20	639	92.79	220.0	
21	679	117.50	262.1	
22	806	106.78	200.7	
23	879	105.88	182.5	
24	952	163.79	260.7	
25	1,162	262.37	342.0	
26	1,915	33.53	26.5	

Assay Class: High Sensitivity DNA Assay  
 Data Path: C:\...ents and Settings\Bioanalyzer\2013-07-15\2013-07-15\_001.xad

Created: 7/15/2013 11:31:12 AM  
 Modified: 7/15/2013 12:21:10 PM

### Electropherogram Summary Continued ...

#### ... Peak table for sample 4 : Lep-INP 1:2

Peak	Size [bp]	Conc. [pg/μl]	Molarity [pmol/l]	Observations
27	2,395	17.21	10.9	
28	2,639	14.61	8.4	
29	3,444	11.64	5.1	
30	4,775	4.40	1.4	
31	5,566	2.61	0.7	
32	10,380	75.00	10.9	Upper Marker

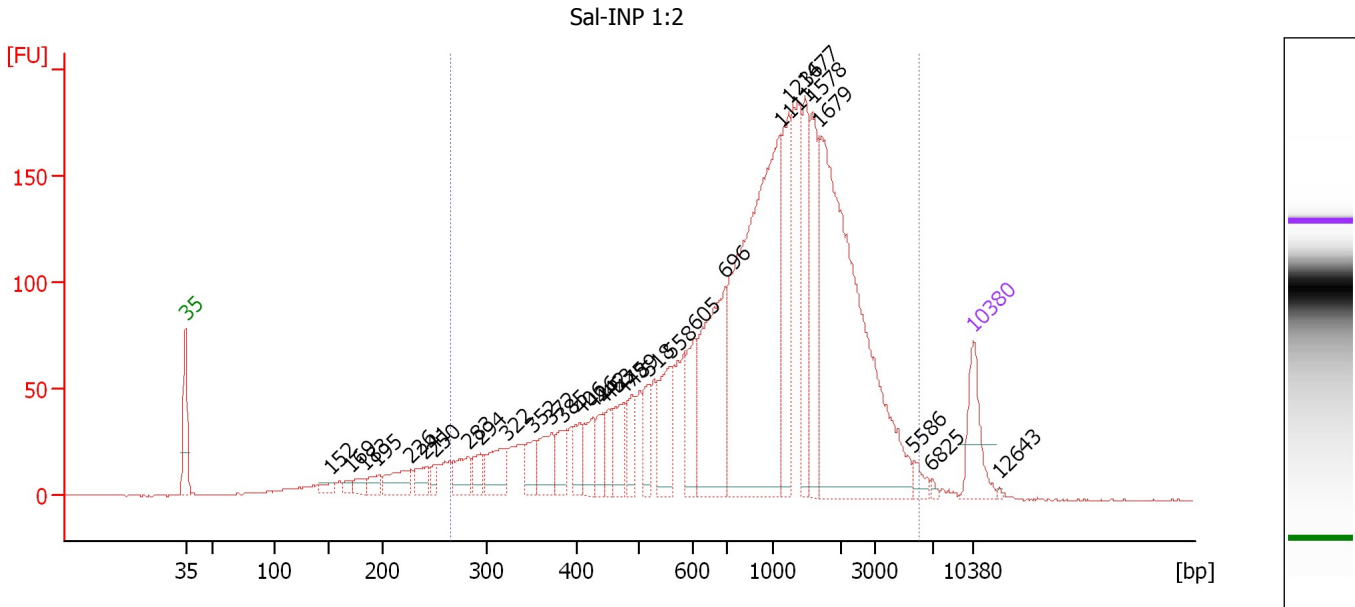
#### Region table for sample 4 : Lep-INP 1:2

From [bp]	To [bp]	Average Size [bp]	Molarity [pmol/l]	Conc. [pg/μl]	Corr. Area	% of Total	Size distribution in CV [%]	Color
124	4,869	661	18,886.7	4,555.14	3,343.1	97	84.0	

Assay Class: High Sensitivity DNA Assay  
 Data Path: C:\...ents and Settings\Bioanalyzer\2013-07-15\2013-07-15\_001.xad

Created: 7/15/2013 11:31:12 AM  
 Modified: 7/15/2013 12:21:10 PM

**Electropherogram Summary Continued ...**



**Overall Results for sample 5 : Sal-INP 1:2**

Number of peaks found: 31                      Corr. Area 1: 3,372.8  
 Noise: 0.1

**Peak table for sample 5 : Sal-INP 1:2**

Peak	Size [bp]	Conc. [pg/μl]	Molarity [pmol/l]	Observations
1	35	125.00	5,411.3	Lower Marker
2	152	20.43	203.2	
3	169	14.48	129.6	
4	183	23.73	196.8	
5	195	27.21	211.8	
6	226	64.56	432.3	
7	241	37.92	238.3	
8	250	21.04	127.6	
9	283	59.39	318.4	
10	294	36.51	188.2	
11	322	83.05	390.7	
12	352	43.35	186.7	
13	372	79.73	324.6	
14	385	53.35	209.9	
15	406	46.69	174.2	
16	426	61.59	218.9	
17	442	51.56	176.9	
18	453	39.15	131.1	
19	475	78.15	249.1	
20	489	60.55	187.6	
21	518	54.38	159.1	
22	558	115.53	313.9	
23	605	88.37	221.1	
24	696	303.41	660.2	
25	1,111	719.41	981.0	
26	1,236	142.05	174.2	

Assay Class: High Sensitivity DNA Assay  
 Data Path: C:\...ents and Settings\Bioanalyzer\2013-07-15\2013-07-15\_001.xad


Created: 7/15/2013 11:31:12 AM  
 Modified: 7/15/2013 12:21:10 PM

### Electropherogram Summary Continued ...

#### ... Peak table for sample 5 : Sal-INP 1:2

Peak	Size [bp]	Conc. [pg/μl]	Molarity [pmol/l]	Observations
27	1,477	124.04	127.3	
28	1,578	141.87	136.2	
29	1,679	707.57	638.5	
30	5,586	18.20	4.9	
31	6,825	4.92	1.1	
32	10,380	75.00	10.9	Upper Marker
33	12,643	0.00	0.0	

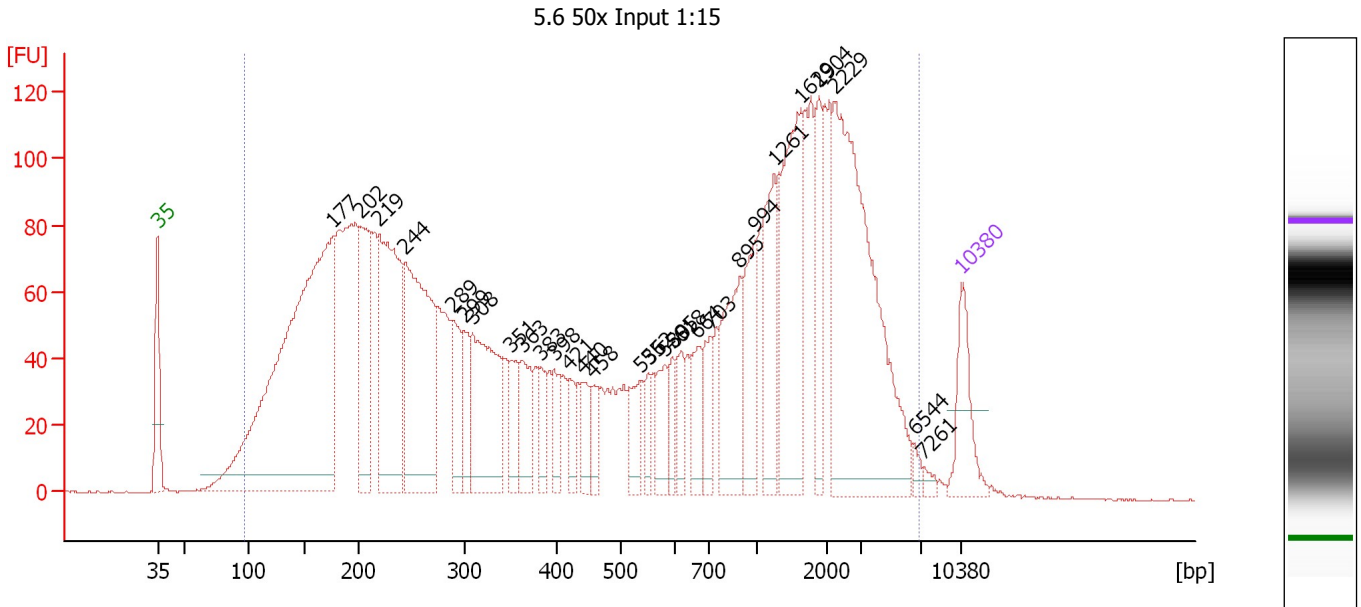
#### Region table for sample 5 : Sal-INP 1:2

From [bp]	To [bp]	Average Size [bp]	Molarity [pmol/l]	Conc. [pg/μl]	Corr. Area	% of Total	Size distribution in CV [%]	Color
265	5,997	1,242	7,874.3	3,700.48	3,372.8	92	71.9	

Assay Class: High Sensitivity DNA Assay  
 Data Path: C:\...ents and Settings\Bioanalyzer\2013-07-15\2013-07-15\_001.xad

Created: 7/15/2013 11:31:12 AM  
 Modified: 7/15/2013 12:21:10 PM

**Electropherogram Summary Continued ...**



**Overall Results for sample 6 : 5.6 50x Input 1:15**

Number of peaks found: 29                      Corr. Area 1: 4,479.2  
 Noise: 0.2

**Peak table for sample 6 : 5.6 50x Input 1:15**

Peak	Size [bp]	Conc. [pg/μl]	Molarity [pmol/l]	Observations
1	35	125.00	5,411.3	Lower Marker
2	177	1,250.61	10,702.5	
3	202	227.18	1,702.3	
4	219	428.95	2,964.2	
5	244	452.03	2,806.4	
6	289	99.12	519.7	
7	299	71.96	364.2	
8	308	261.31	1,284.6	
9	351	67.30	290.6	
10	363	88.57	369.8	
11	383	45.76	181.2	
12	398	52.11	198.6	
13	421	39.45	142.1	
14	440	43.33	149.2	
15	458	36.62	121.1	
16	536	60.45	170.9	
17	552	35.95	98.7	
18	580	60.15	157.1	
19	595	35.45	90.2	
20	618	45.27	111.0	
21	664	62.04	141.7	
22	703	56.70	122.2	
23	895	156.69	265.4	
24	994	102.89	156.9	
25	1,261	122.32	147.0	
26	1,629	235.25	218.8	

Assay Class: High Sensitivity DNA Assay  
 Data Path: C:\...ents and Settings\Bioanalyzer\2013-07-15\2013-07-15\_001.xad

Created: 7/15/2013 11:31:12 AM  
 Modified: 7/15/2013 12:21:10 PM

### Electropherogram Summary Continued ...

#### ... Peak table for sample 6 : 5.6 50x Input 1:15

Peak	Size [bp]	Conc. [pg/μl]	Molarity [pmol/l]	Observations
27	1,904	85.59	68.1	
28	2,229	482.40	327.9	
29	6,544	10.53	2.4	
30	7,261	8.35	1.7	
31	10,380	75.00	10.9	Upper Marker

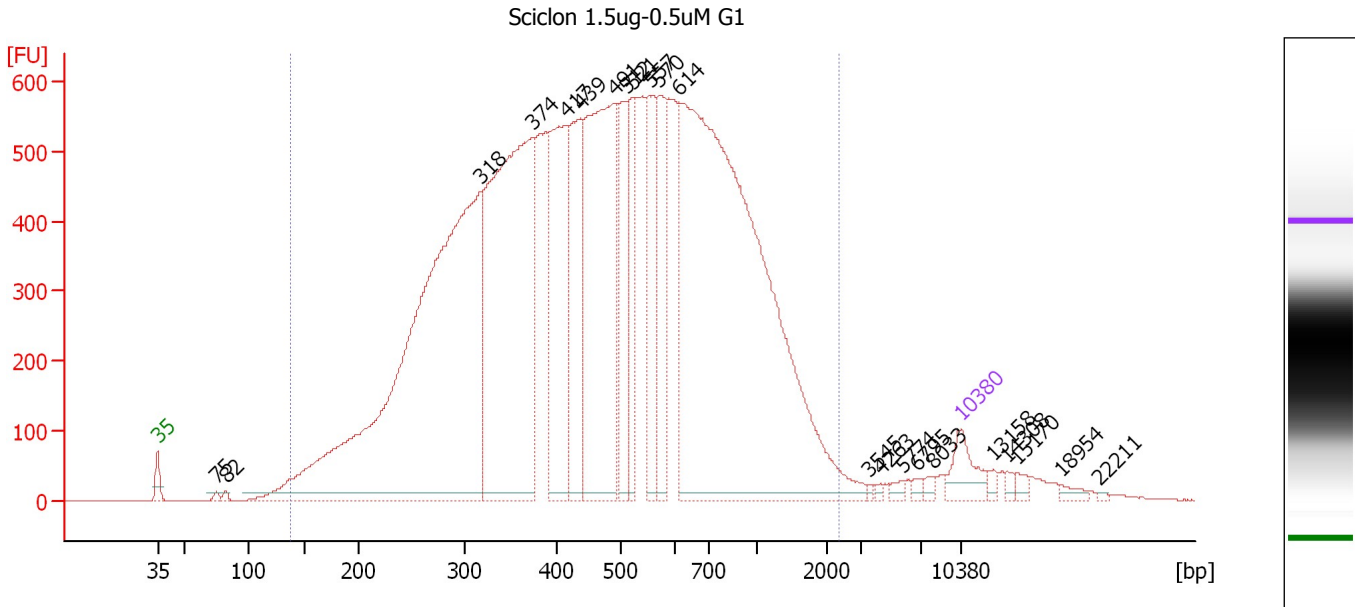
#### Region table for sample 6 : 5.6 50x Input 1:15

From [bp]	To [bp]	Average Size [bp]	Molarity [pmol/l]	Conc. [pg/μl]	Corr. Area	% of Total	Size distribution in CV [%]	Color
97	6,877	1,054	34,173.2	6,346.79	4,479.2	98	100.0	

Assay Class: High Sensitivity DNA Assay  
 Data Path: C:\...ents and Settings\Bioanalyzer\2013-07-15\2013-07-15\_001.xad

Created: 7/15/2013 11:31:12 AM  
 Modified: 7/15/2013 12:21:10 PM

**Electropherogram Summary Continued ...**



**Setpoint Deviations for sample 7 : Sciclone 1.5ug-0.5uM G1**

Height Threshold [FU] : 10

**Overall Results for sample 7 : Sciclone 1.5ug-0.5uM G1**

Number of peaks found: 22                      Corr. Area 1: 21,821.6  
 Noise: 0.3

**Peak table for sample 7 : Sciclone 1.5ug-0.5uM G1**

Peak	Size [bp]	Conc. [pg/μl]	Molarity [pmol/l]	Observations
1	35	125.00	5,411.3	Lower Marker
2	75	10.91	221.0	
3	82	11.07	204.1	
4	318	2,789.58	13,311.5	
5	374	1,643.50	6,652.3	
6	417	678.11	2,463.6	
7	439	446.08	1,539.7	
8	491	1,059.93	3,272.6	
9	512	317.22	939.1	
10	521	227.57	661.7	
11	557	283.57	771.0	
12	570	310.91	826.9	
13	614	2,642.85	6,521.3	
14	3,545	5.47	2.3	
15	4,263	7.23	2.6	
16	5,774	12.17	3.2	
17	6,795	11.95	2.7	
18	8,033	13.01	2.5	
19	10,380	75.00	10.9	Upper Marker
20	13,158	0.00	0.0	
21	14,308	0.00	0.0	
22	15,170	0.00	0.0	


Assay Class: High Sensitivity DNA Assay  
Data Path: C:\...ents and Settings\Bioanalyzer\2013-07-15\2013-07-15\_001.xad

Created: 7/15/2013 11:31:12 AM  
Modified: 7/15/2013 12:21:10 PM

**Electropherogram Summary Continued ...****... Peak table for sample 7 : Sciclou 1.5ug-0.5uM G1**

Peak	Size [bp]	Conc. [pg/μl]	Molarity [pmol/l]	Observations
23	18,954	0.00	0.0	
24	22,211	0.00	0.0	

**Region table for sample 7 : Sciclou 1.5ug-0.5uM G1**

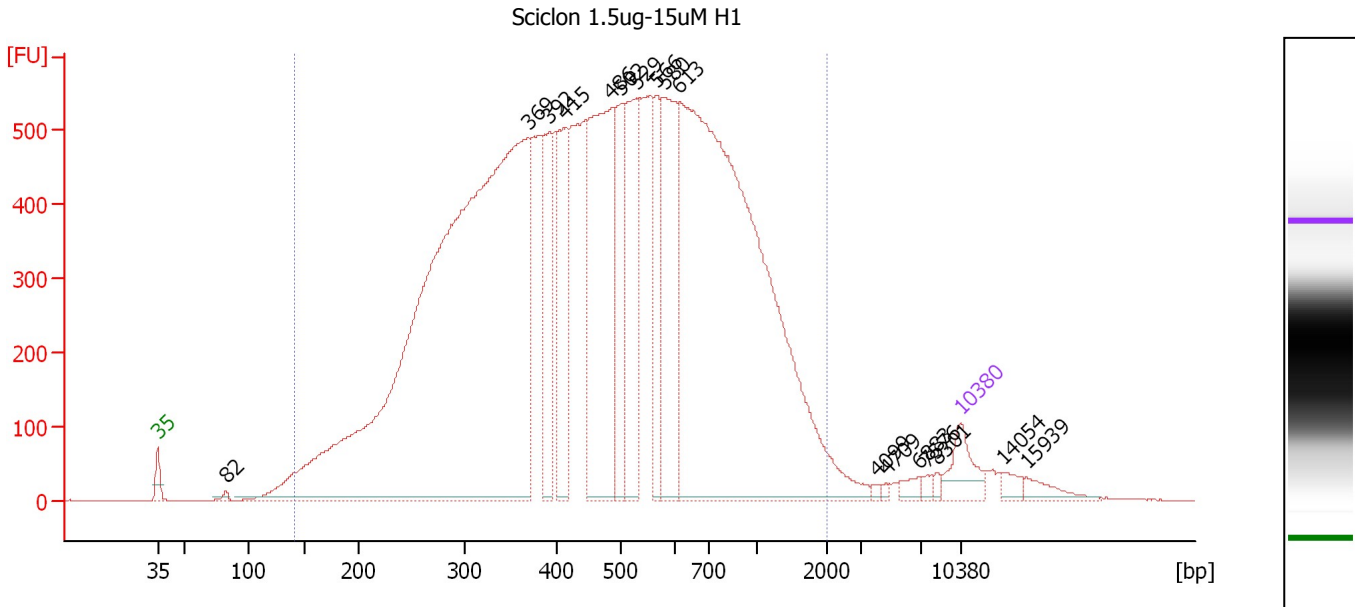
From [bp]	To [bp]	Average Size [bp]	Molarity [pmol/l]	Conc. [pg/μl]	Corr. Area	% of Total	Size distribution in CV [%]	Color
138	2,342	551	45,375.9	11,786.73	21,821.6	97	57.9	



Assay Class: High Sensitivity DNA Assay  
 Data Path: C:\...ents and Settings\Bioanalyzer\2013-07-15\2013-07-15\_001.xad

Created: 7/15/2013 11:31:12 AM  
 Modified: 7/15/2013 12:21:10 PM

**Electropherogram Summary Continued ...**



**Overall Results for sample 8 : Sciclon 1.5ug-15uM H1**

Number of peaks found: 17      Corr. Area 1: 20,635.0  
 Noise: 0.3

**Peak table for sample 8 : Sciclon 1.5ug-15uM H1**

Peak	Size [bp]	Conc. [pg/μl]	Molarity [pmol/l]	Observations
1	35	125.00	5,411.3	Lower Marker
2	82	11.90	219.3	
3	369	3,774.25	15,481.2	
4	392	271.47	1,048.1	
5	415	350.65	1,280.4	
6	486	807.66	2,519.2	
7	502	299.46	903.8	
8	529	436.31	1,249.4	
9	566	200.76	537.8	
10	580	465.13	1,214.7	
11	613	2,481.37	6,131.8	
12	4,099	7.85	2.9	
13	4,709	5.73	1.8	
14	6,883	20.21	4.4	
15	7,576	10.76	2.2	
16	8,301	9.41	1.7	
17	10,380	75.00	10.9	Upper Marker
18	14,054	0.00	0.0	
19	15,939	0.00	0.0	

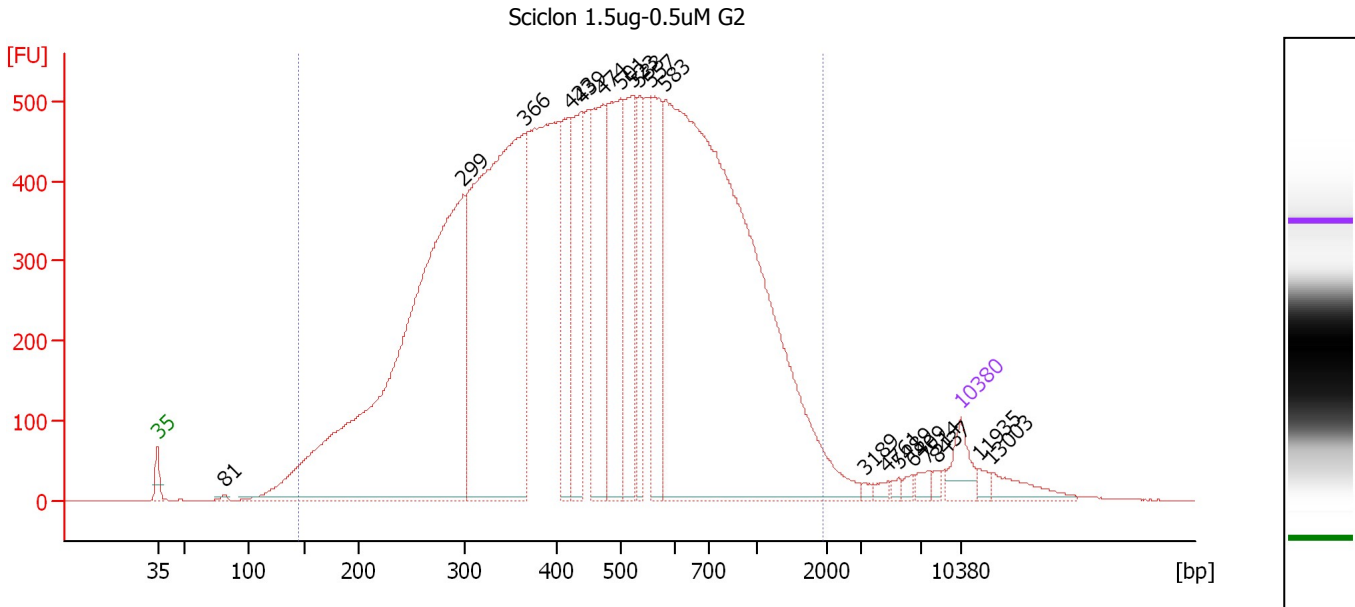
**Region table for sample 8 : Sciclon 1.5ug-15uM H1**

From [bp]	To [bp]	Average Size [bp]	Molarity [pmol/l]	Conc. [pg/μl]	Corr. Area	% of Total	Size distribution in CV [%]	Color
141	2,039	546	42,522.4	10,989.76	20,635.0	97	56.4	Blue

Assay Class: High Sensitivity DNA Assay  
 Data Path: C:\...ents and Settings\Bioanalyzer\2013-07-15\2013-07-15\_001.xad

Created: 7/15/2013 11:31:12 AM  
 Modified: 7/15/2013 12:21:10 PM

**Electropherogram Summary Continued ...**



**Overall Results for sample 9 : Sciclon 1.5ug-0.5uM G2**

Number of peaks found: 19      Corr. Area 1: 19,297.7  
 Noise: 0.3

**Peak table for sample 9 : Sciclon 1.5ug-0.5uM G2**

Peak	Size [bp]	Conc. [pg/μl]	Molarity [pmol/l]	Observations
1	35	125.00	5,411.3	Lower Marker
2	81	8.16	152.3	
3	299	3,011.05	15,261.6	
4	366	2,106.78	8,712.0	
5	423	391.85	1,405.1	
6	439	432.62	1,494.6	
7	474	572.17	1,828.3	
8	501	609.72	1,843.9	
9	523	416.90	1,207.8	
10	533	254.28	722.2	
11	557	414.49	1,128.4	
12	583	3,357.52	8,729.8	
13	3,189	10.32	4.9	
14	4,761	15.63	5.0	
15	5,489	12.55	3.5	
16	6,409	15.01	3.5	
17	7,514	23.22	4.7	
18	8,437	15.46	2.8	
19	10,380	75.00	10.9	Upper Marker
20	11,935	0.00	0.0	
21	13,003	0.00	0.0	

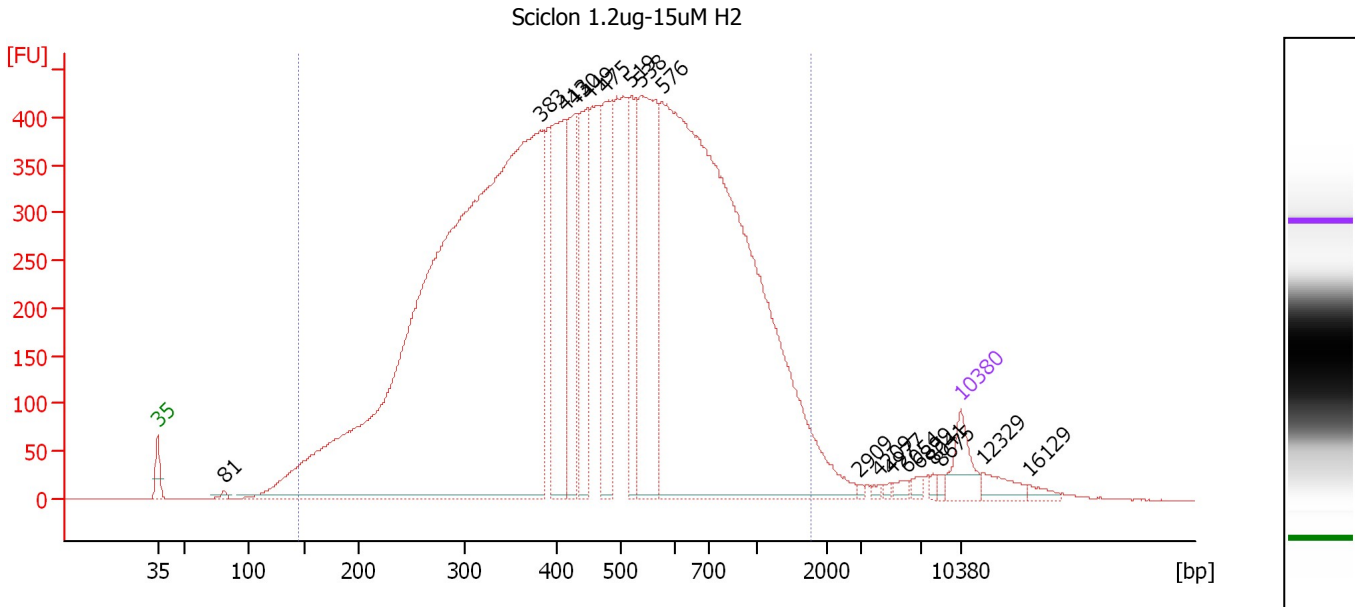
**Region table for sample 9 : Sciclon 1.5ug-0.5uM G2**

From [bp]	To [bp]	Average Size [bp]	Molarity [pmol/l]	Conc. [pg/μl]	Corr. Area	% of Total	Size distribution in CV [%]	Color
145	1,944	528	53,297.9	13,457.99	19,297.7	97	55.2	Blue

Assay Class: High Sensitivity DNA Assay  
 Data Path: C:\...ents and Settings\Bioanalyzer\2013-07-15\2013-07-15\_001.xad

Created: 7/15/2013 11:31:12 AM  
 Modified: 7/15/2013 12:21:10 PM

**Electropherogram Summary Continued ...**



**Overall Results for sample 10 : Sciclone 1.2ug-15uM H2**

Number of peaks found: 18                      Corr. Area 1: 15,481.6  
 Noise: 0.3

**Peak table for sample 10 : Sciclone 1.2ug-15uM H2**

Peak	Size [bp]	Conc. [pg/μl]	Molarity [pmol/l]	Observations
1	35	125.00	5,411.3	Lower Marker
2	81	12.59	234.5	
3	383	4,514.95	17,878.7	
4	413	511.64	1,878.0	
5	430	361.36	1,274.1	
6	449	360.82	1,216.6	
7	475	362.51	1,155.7	
8	519	294.41	859.2	
9	538	676.86	1,905.8	
10	576	3,082.34	8,109.0	
11	2,909	5.90	3.1	
12	4,209	6.74	2.4	
13	4,977	6.89	2.1	
14	6,054	14.90	3.7	
15	6,899	12.73	2.8	
16	8,041	8.58	1.6	
17	8,675	8.57	1.5	
18	10,380	75.00	10.9	Upper Marker
19	12,329	0.00	0.0	
20	16,129	0.00	0.0	

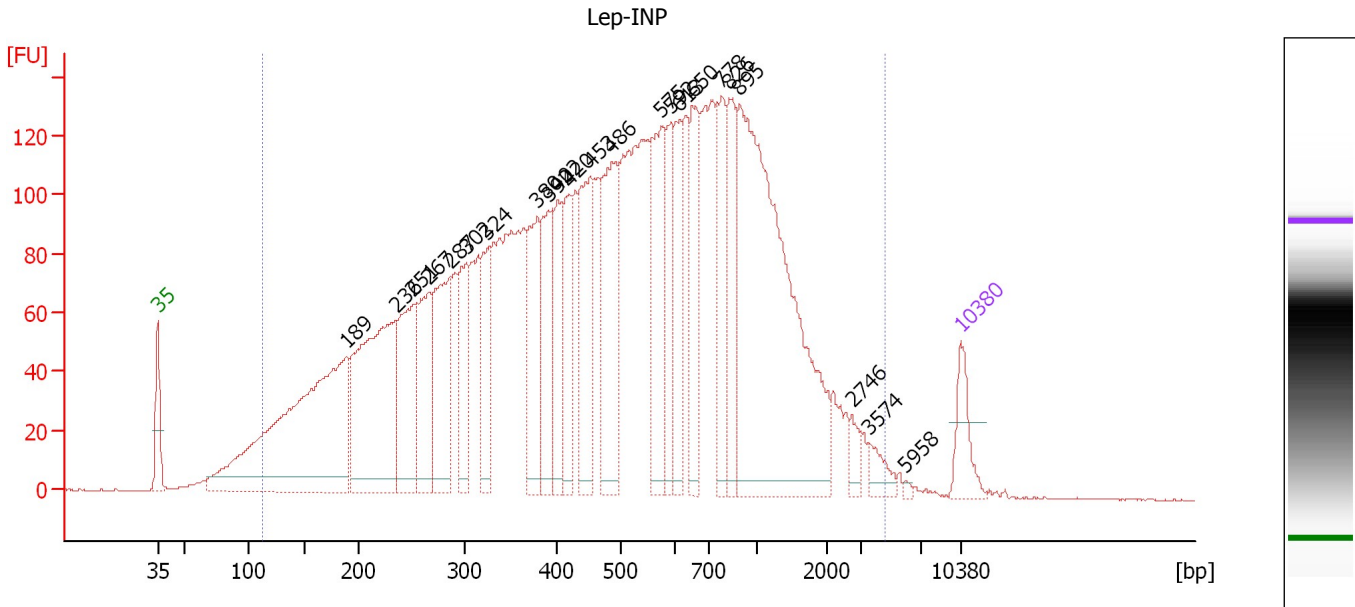
**Region table for sample 10 : Sciclone 1.2ug-15uM H2**

From [bp]	To [bp]	Average Size [bp]	Molarity [pmol/l]	Conc. [pg/μl]	Corr. Area	% of Total	Size distribution in CV [%]	Color
145	1,797	522	46,812.0	11,912.37	15,481.5	96	52.4	Blue

Assay Class: High Sensitivity DNA Assay  
 Data Path: C:\...ents and Settings\Bioanalyzer\2013-07-15\2013-07-15\_001.xad

Created: 7/15/2013 11:31:12 AM  
 Modified: 7/15/2013 12:21:10 PM

**Electropherogram Summary Continued ...**



**Overall Results for sample 11 : Lep-IMP**

Number of peaks found: 23      Corr. Area 1: 5,331.8  
 Noise: 0.2


**Peak table for sample 11 : Lep-IMP**

Peak	Size [bp]	Conc. [pg/μl]	Molarity [pmol/l]	Observations
1	35	125.00	5,411.3	Lower Marker
2	189	1,157.27	9,269.5	
3	236	740.47	4,760.4	
4	251	347.98	2,099.6	
5	267	266.84	1,516.9	
6	287	353.61	1,868.3	
7	302	206.74	1,037.4	
8	324	188.28	879.9	
9	380	270.98	1,080.9	
10	392	219.27	848.4	
11	402	199.79	752.8	
12	420	201.96	729.1	
13	453	321.49	1,075.1	
14	486	375.83	1,170.6	
15	575	299.72	789.7	
16	592	149.54	383.0	
17	613	172.68	426.9	
18	650	226.20	527.0	
19	778	187.43	364.8	
20	826	215.50	395.4	
21	895	1,121.80	1,898.7	
22	2,746	31.40	17.3	
23	3,574	40.50	17.2	
24	5,958	4.98	1.3	
25	10,380	75.00	10.9	Upper Marker

Assay Class: High Sensitivity DNA Assay  
Data Path: C:\...ents and Settings\Bioanalyzer\2013-07-15\2013-07-15\_001.xad

Created: 7/15/2013 11:31:12 AM  
Modified: 7/15/2013 12:21:10 PM

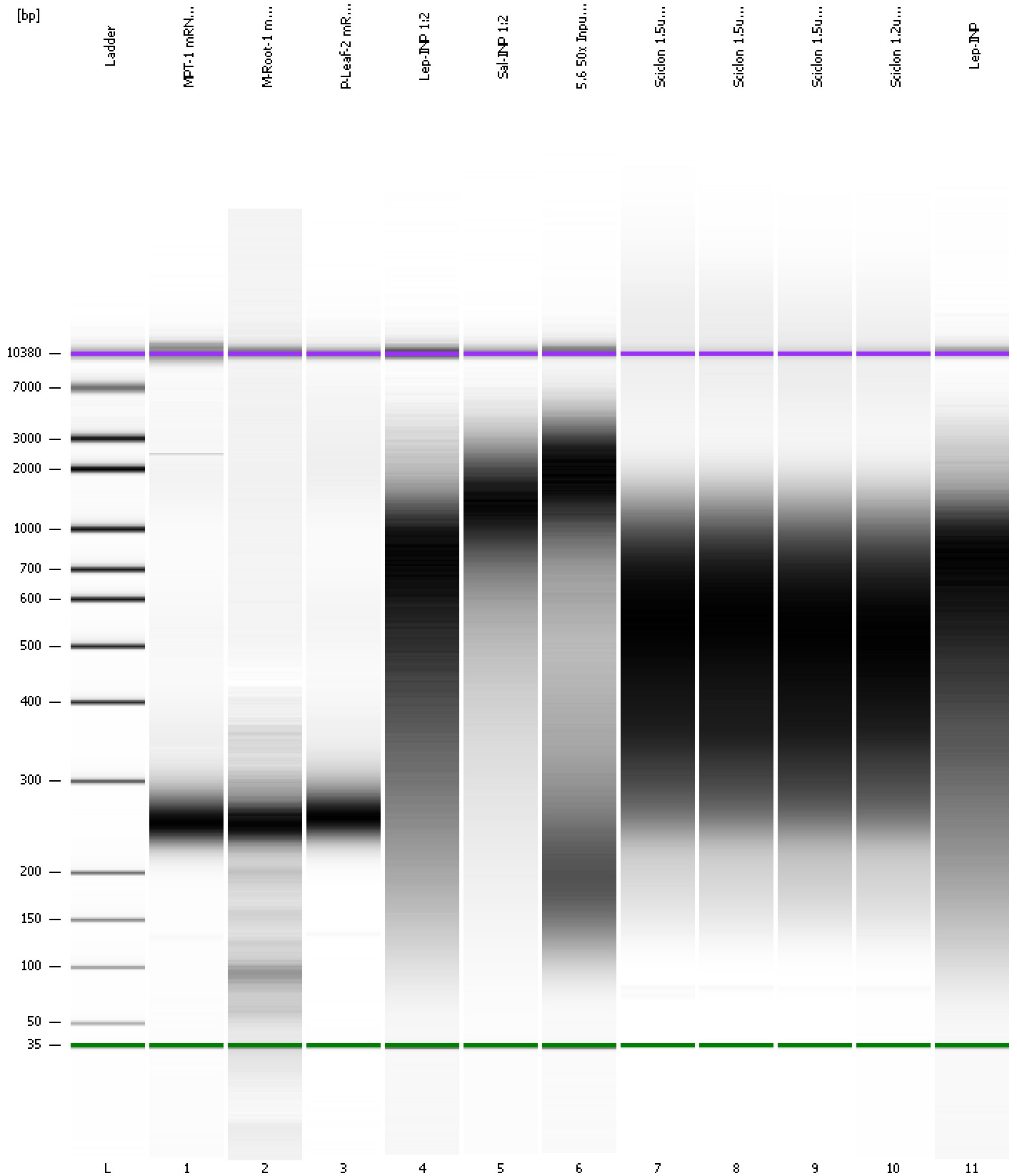
**Electropherogram Summary Continued ...****... Region table for sample 11 : Lep-INP**

<b>From [bp]</b>	<b>To [bp]</b>	<b>Average Size [bp]</b>	<b>Molarity [pmol/l]</b>	<b>Conc. [pg/μl]</b>	<b>Corr. Area</b>	<b>% of Total</b>	<b>Size distribution in CV [%]</b>	<b>Co lor</b>
112	4,647	640	42,133.9	9,755.13	5,331.8	97	83.3	

Assay Class: High Sensitivity DNA Assay  
Data Path: C:\...ents and Settings\Bioanalyzer\2013-07-15\2013-07-15\_001.xad

Created: 7/15/2013 11:31:12 AM  
Modified: 7/15/2013 12:21:10 PM

**Gel Image**



Assay Class: High Sensitivity DNA Assay  
 Data Path: C:\...ents and Settings\Bioanalyzer\2013-07-15\2013-07-15\_001.xad

Created: 7/15/2013 11:31:12 AM  
 Modified: 7/15/2013 12:21:10 PM

**Run Logbook**

Description	Number	Source	Category	Sub Category	Time	Time Zone	User	Host
Run ended on port 1 (Number of wells acquired: 12)		Instrument	Run		7/15/2013 12:12:31 PM	(GMT --07:00) Pacific Standard Time	UC Davis	D8XSMGH1
Run started on port 1 (File: C:\Documents and Settings\Bioanalyzer\2013-07-15\2013-07-15_001.xad)		Instrument	Run		7/15/2013 11:31:17 AM	(GMT --07:00) Pacific Standard Time	UC Davis	D8XSMGH1
Product Number : G2938B		Instrument	Run		7/15/2013 11:31:17 AM	(GMT --07:00) Pacific Standard Time	UC Davis	D8XSMGH1
Name :		Instrument	Run		7/15/2013 11:31:17 AM	(GMT --07:00) Pacific Standard Time	UC Davis	D8XSMGH1
Vendor : Agilent Technologies		Instrument	Run		7/15/2013 11:31:17 AM	(GMT --07:00) Pacific Standard Time	UC Davis	D8XSMGH1
Serial# : DE13701086		Instrument	Run		7/15/2013 11:31:17 AM	(GMT --07:00) Pacific Standard Time	UC Davis	D8XSMGH1
Firmware : C.01.069		Instrument	Run		7/15/2013 11:31:17 AM	(GMT --07:00) Pacific Standard Time	UC Davis	D8XSMGH1
Cartridge : Electrode		Instrument	Run		7/15/2013 11:31:17 AM	(GMT --07:00) Pacific Standard Time	UC Davis	D8XSMGH1