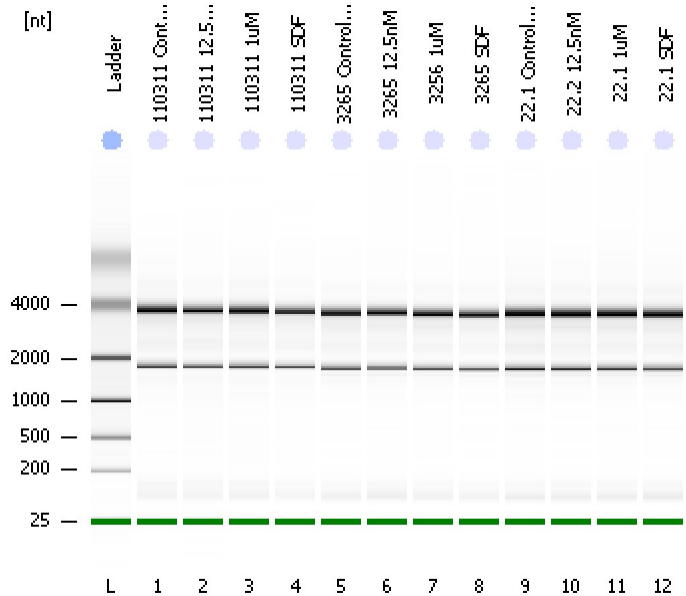


Assay Class: Eukaryote Total RNA Nano
Data Path: C:\...ents and Settings\Bioanalyzer\2013-07-16\2013-07-16_001.xad

Created: 7/16/2013 1:23:34 PM
Modified: 7/16/2013 1:47:25 PM

Electrophoresis File Run Summary



Instrument Information:

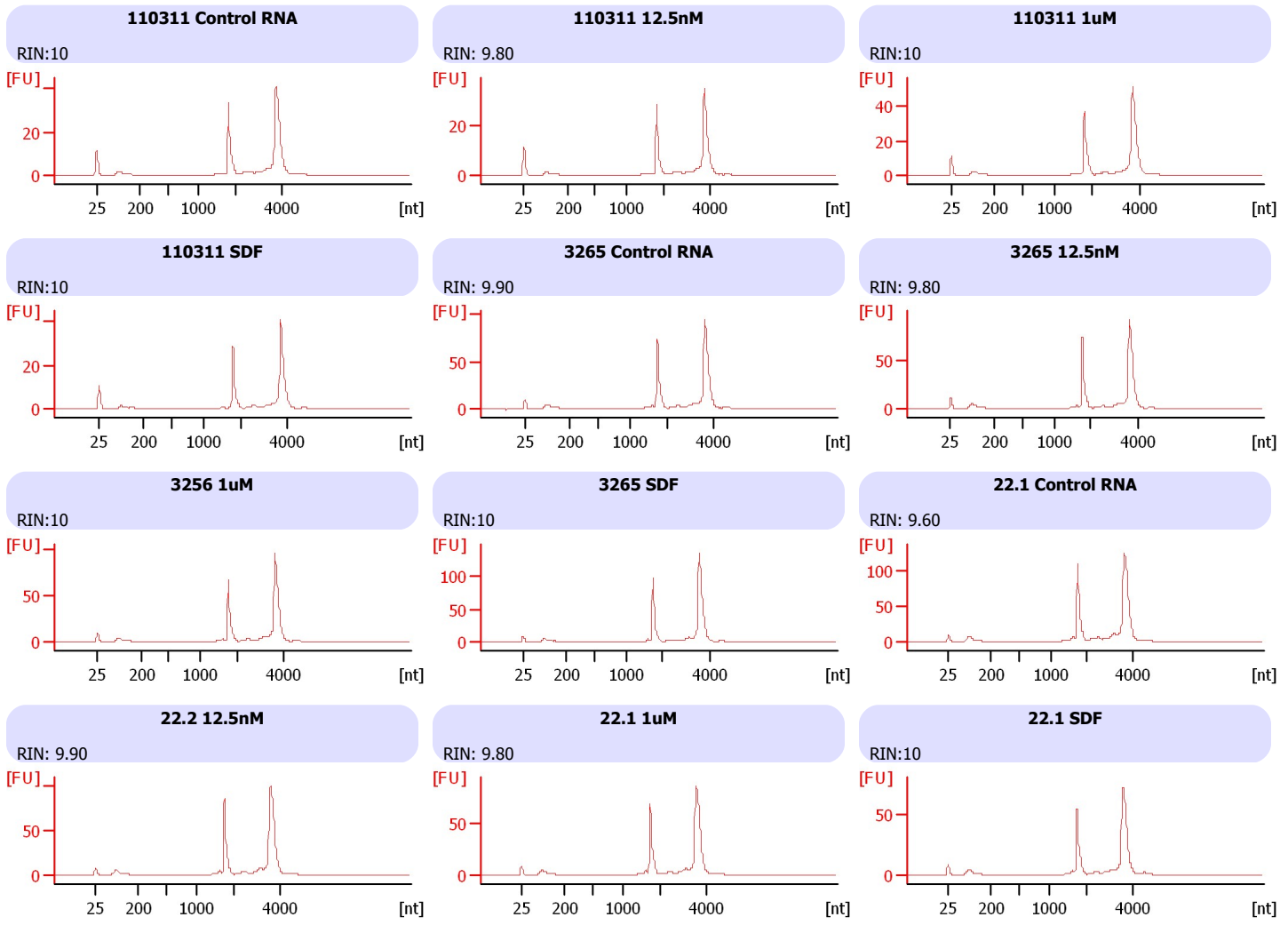
Instrument Name: DE13701086 Firmware: C.01.069
Serial#: DE13701086 Type: G2938B

Assay Information:

Assay Origin Path: C:\Program Files\Agilent\2100 bioanalyzer\2100 expert\assays\RNA\Eukaryote Total RNA Nano Series II.xsy
Assay Class: Eukaryote Total RNA Nano
Version: 2.6
Assay Comments: Total RNA Analysis ng sensitivity (Eukaryote)
© Copyright 2003 - 2009 Agilent Technologies, Inc.

Chip Information:

Chip Lot #: Reagent Kit Lot #: Chip Comments:



Assay Class: Eukaryote Total RNA Nano
Data Path: C:\...ents and Settings\Bioanalyzer\2013-07-16\2013-07-16_001.xad

Created: 7/16/2013 1:23:34 PM
Modified: 7/16/2013 1:47:25 PM

Electrophoresis File Run Summary (Chip Summary)

Sample Name	Sample Comment	Status	Result Label	Result Color
110311 Control RNA		✓	RIN:10	
110311 12.5nM		✓	RIN: 9.80	
110311 1uM		✓	RIN:10	
110311 SDF		✓	RIN:10	
3265 Control RNA		✓	RIN: 9.90	
3265 12.5nM		✓	RIN: 9.80	
3256 1uM		✓	RIN:10	
3265 SDF		✓	RIN:10	
22.1 Control RNA		✓	RIN: 9.60	
22.2 12.5nM		✓	RIN: 9.90	
22.1 1uM		✓	RIN: 9.80	
22.1 SDF		✓	RIN:10	
Ladder		✓	All Other Samples	

Chip Lot #

Reagent Kit Lot #

Chip Comments :

Assay Class: Eukaryote Total RNA Nano
Data Path: C:\...ents and Settings\Bioanalyzer\2013-07-16\2013-07-16_001.xad

Created: 7/16/2013 1:23:34 PM
Modified: 7/16/2013 1:47:25 PM

Electrophoresis Assay Details

General Analysis Settings

Number of Available Sample and Ladder Wells (Max.) : 13
Minimum Visible Range [s] : 17
Maximum Visible Range [s] : 70
Start Analysis Time Range [s] : 19
End Analysis Time Range [s] : 69
Ladder Concentration [ng/μl] : 150
Lower Marker Concentration [ng/μl] : 0
Upper Marker Concentration [ng/μl] : 0
Used Lower Marker for Quantitation
Standard Curve Fit is Logarithmic
Show Data Aligned to Lower Marker

Integrator Settings

Integration Start Time [s] : 19
Integration End Time [s] : 69
Slope Threshold : 0.6
Height Threshold [FU] : 0.5
Area Threshold : 0.2
Width Threshold [s] : 0.5
Baseline Plateau [s] : 6

Filter Settings

Filter Width [s] : 0.5
Polynomial Order : 4

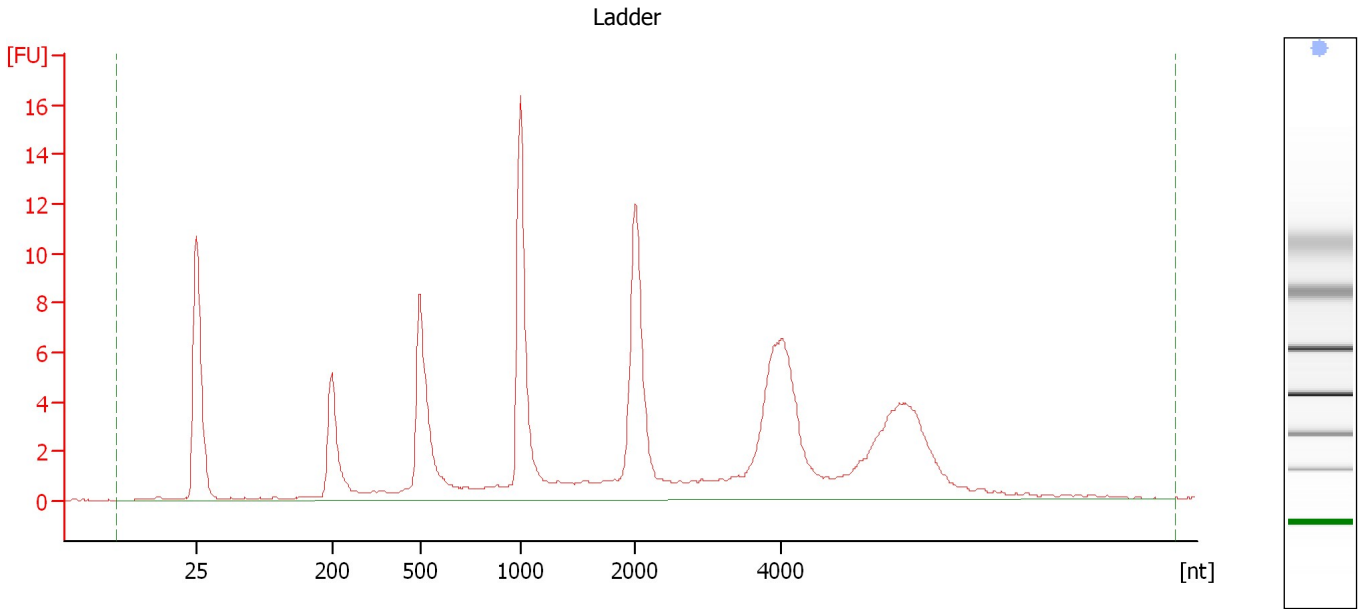
Ladder

Ladder Peak	Size
1	25
2	200
3	500
4	1000
5	2000
6	4000

Assay Class: Eukaryote Total RNA Nano
Data Path: C:\...ents and Settings\Bioanalyzer\2013-07-16\2013-07-16_001.xad

Created: 7/16/2013 1:23:34 PM
Modified: 7/16/2013 1:47:25 PM

Electropherogram Summary



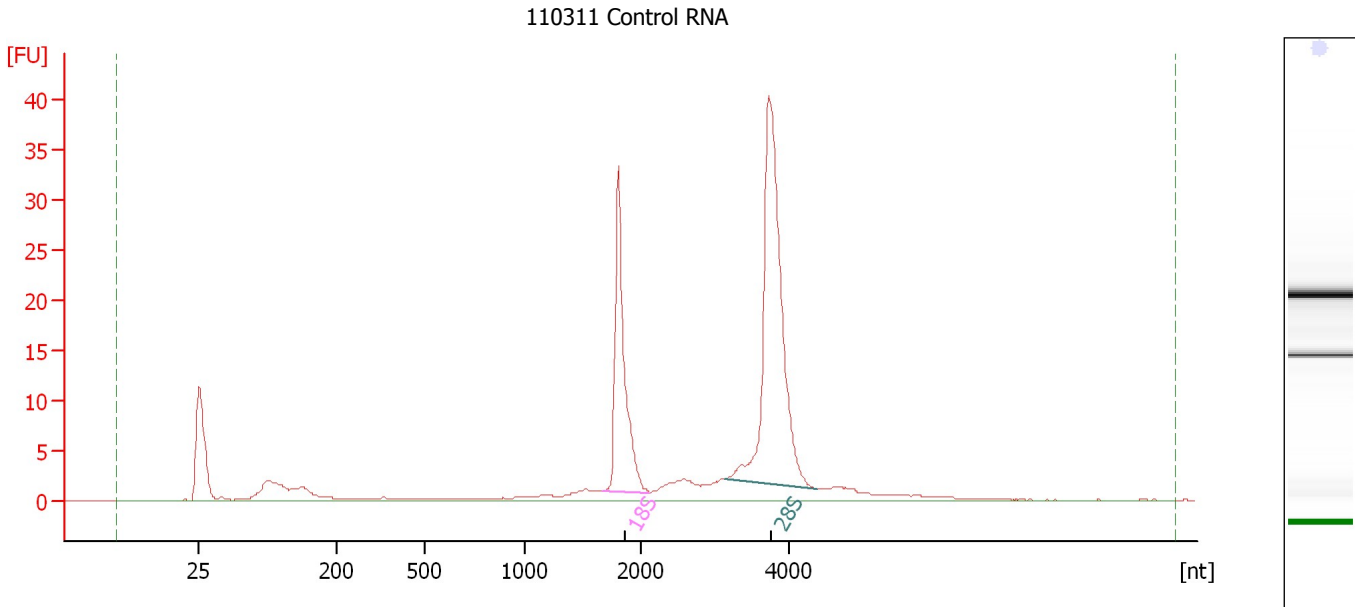
Overall Results for Ladder

RNA Area:	133.8	Result Flagging Color:	
RNA Concentration:	150 ng/μl	Result Flagging Label:	All Other Samples

Assay Class: Eukaryote Total RNA Nano
 Data Path: C:\...ents and Settings\Bioanalyzer\2013-07-16\2013-07-16_001.xad

Created: 7/16/2013 1:23:34 PM
 Modified: 7/16/2013 1:47:25 PM

Electropherogram Summary Continued ...



Overall Results for sample 1 : 110311 Control RNA

RNA Area:	181.7	RNA Integrity Number (RIN):	10 (B.02.08)
RNA Concentration:	204 ng/μl	Result Flagging Color:	
rRNA Ratio [28s / 18s]:	2.0	Result Flagging Label:	RIN:10

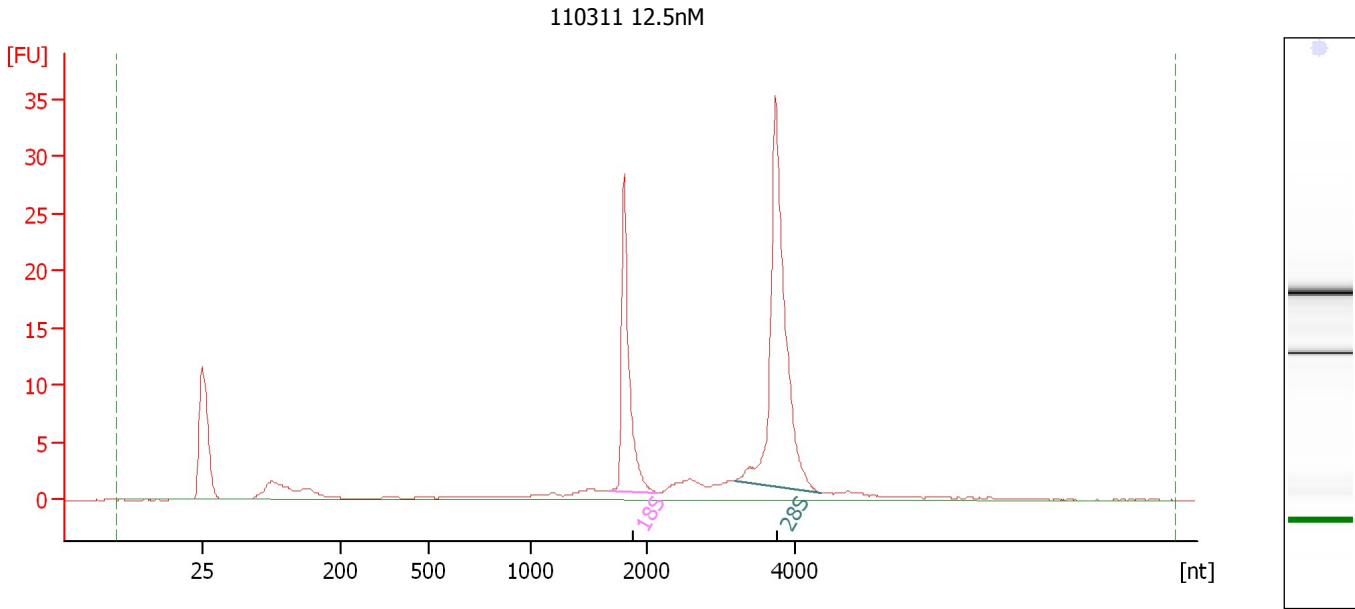
Fragment table for sample 1 : 110311 Control RNA

Name	Start Size [nt]	End Size [nt]	Area	% of total Area
18S	1,662	2,106	35.9	19.8
28S	3,136	4,398	73.6	40.5

Assay Class: Eukaryote Total RNA Nano
Data Path: C:\...ents and Settings\Bioanalyzer\2013-07-16\2013-07-16_001.xad

Created: 7/16/2013 1:23:34 PM
Modified: 7/16/2013 1:47:25 PM

Electropherogram Summary Continued ...



Overall Results for sample 2 : 110311 12.5nM

RNA Area: 131.3 RNA Integrity Number (RIN): 9.8 (B.02.08)
RNA Concentration: 147 ng/μl Result Flagging Color:
rRNA Ratio [28s / 18s]: 2.0 Result Flagging Label: RIN: 9.80

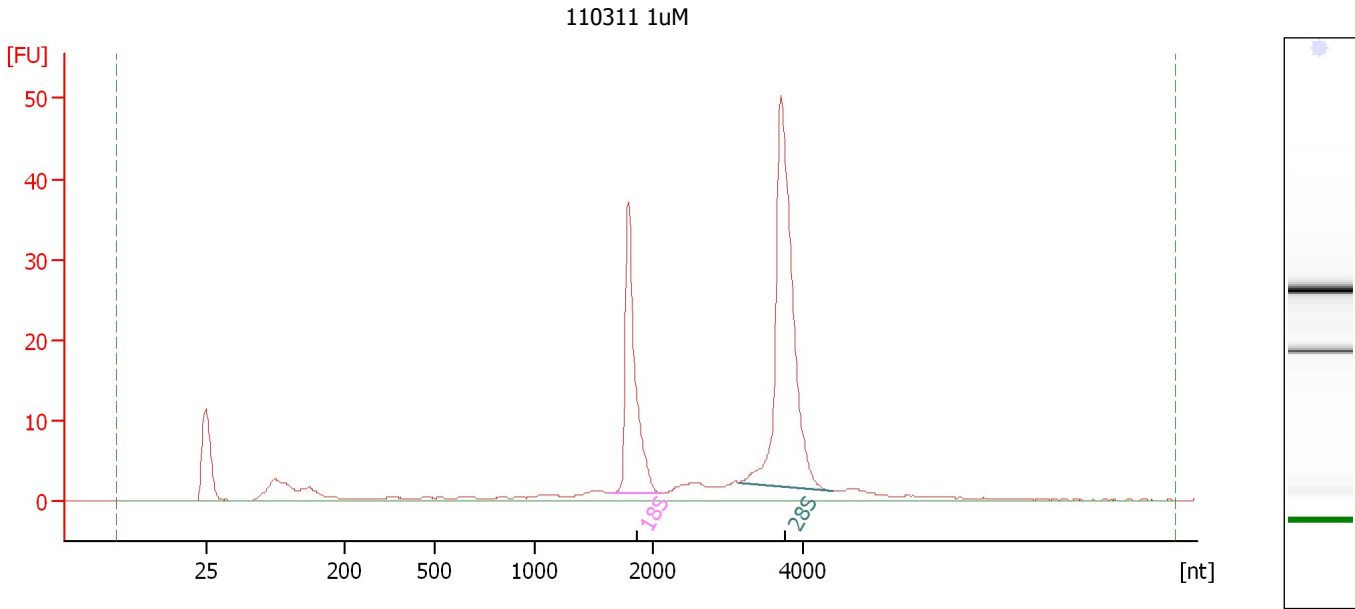
Fragment table for sample 2 : 110311 12.5nM

Name	Start Size [nt]	End Size [nt]	Area	% of total Area
18S	1,668	2,139	25.9	19.7
28S	3,177	4,330	52.2	39.7

Assay Class: Eukaryote Total RNA Nano
Data Path: C:\...ents and Settings\Bioanalyzer\2013-07-16\2013-07-16_001.xad

Created: 7/16/2013 1:23:34 PM
Modified: 7/16/2013 1:47:25 PM

Electropherogram Summary Continued ...



Overall Results for sample 3 : 110311 1uM

RNA Area: 205.6 RNA Integrity Number (RIN): 10 (B.02.08)
RNA Concentration: 231 ng/μl Result Flagging Color:
rRNA Ratio [28s / 18s]: 2.0 Result Flagging Label: RIN:10

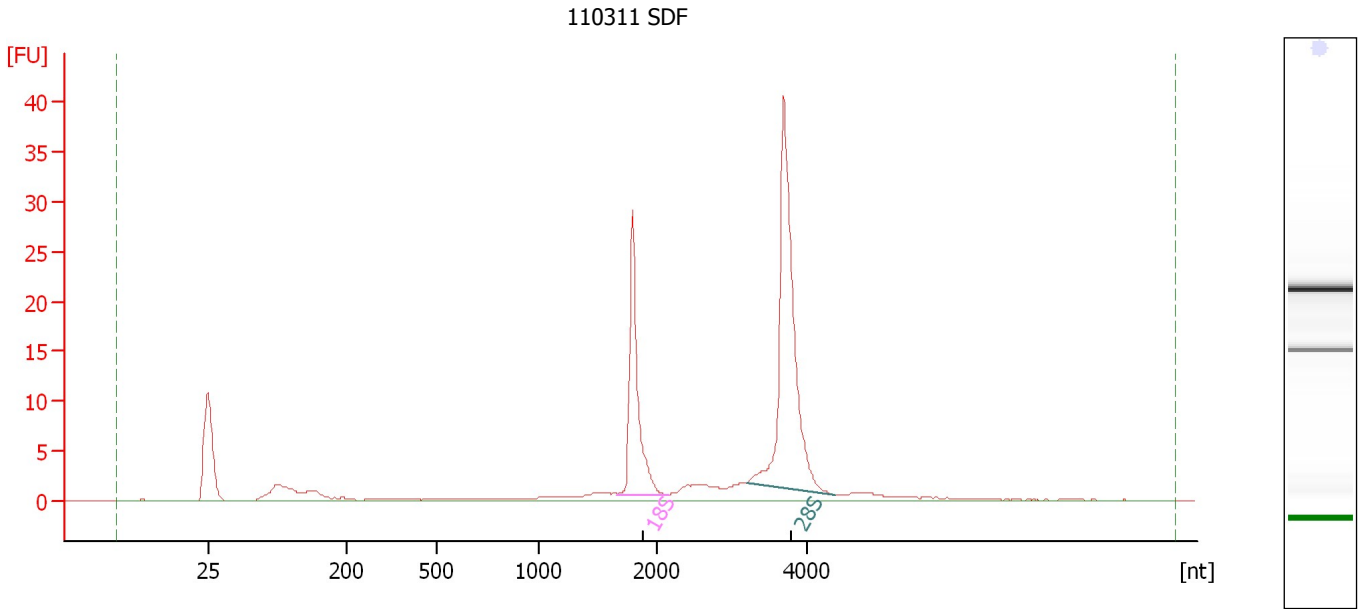
Fragment table for sample 3 : 110311 1uM

Name	Start Size [nt]	End Size [nt]	Area	% of total Area
18S	1,646	2,129	42.4	20.6
28S	3,146	4,420	86.8	42.2

Assay Class: Eukaryote Total RNA Nano
Data Path: C:\...ents and Settings\Bioanalyzer\2013-07-16\2013-07-16_001.xad

Created: 7/16/2013 1:23:34 PM
Modified: 7/16/2013 1:47:25 PM

Electropherogram Summary Continued ...



Overall Results for sample 4 : 110311 SDF

RNA Area: 135.7 RNA Integrity Number (RIN): 10 (B.02.08)
RNA Concentration: 152 ng/μl Result Flagging Color:
rRNA Ratio [28s / 18s]: 2.1 Result Flagging Label: RIN:10

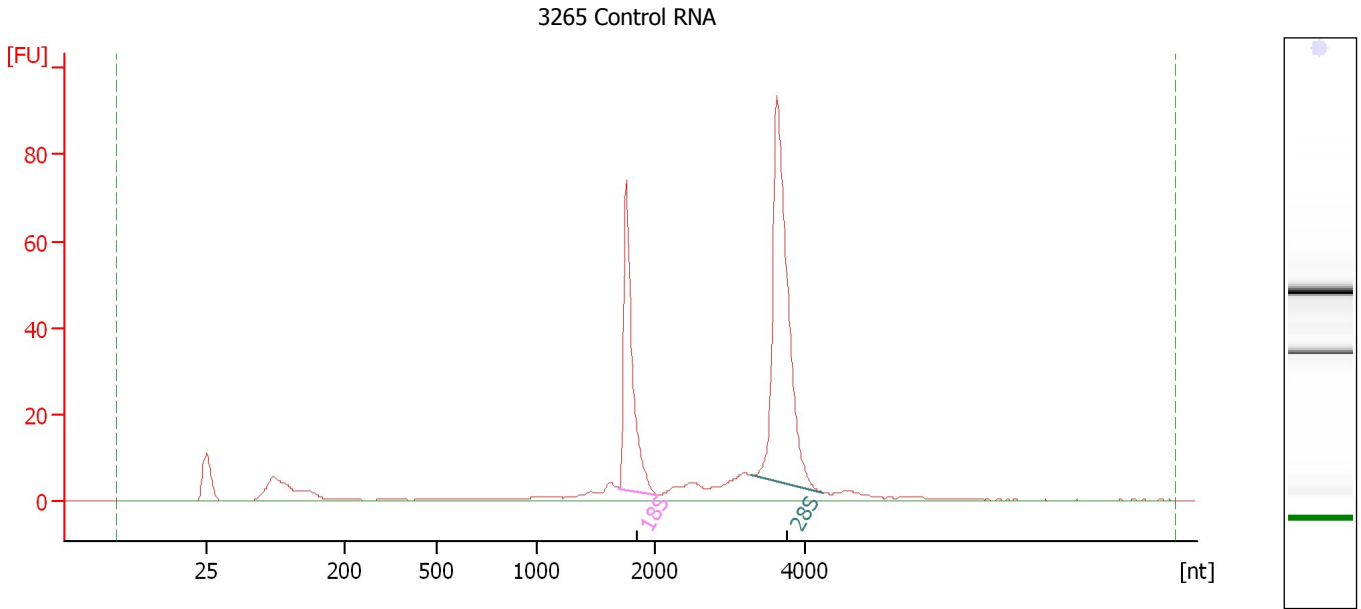
Fragment table for sample 4 : 110311 SDF

Name	Start Size [nt]	End Size [nt]	Area	% of total Area
18S	1,658	2,146	27.7	20.4
28S	3,187	4,370	56.7	41.8

Assay Class: Eukaryote Total RNA Nano
Data Path: C:\...ents and Settings\Bioanalyzer\2013-07-16\2013-07-16_001.xad

Created: 7/16/2013 1:23:34 PM
Modified: 7/16/2013 1:47:25 PM

Electropherogram Summary Continued ...



Overall Results for sample 5 : 3265 Control RNA

RNA Area: 351.2 RNA Integrity Number (RIN): 9.9 (B.02.08)
RNA Concentration: 394 ng/μl Result Flagging Color:
rRNA Ratio [28s / 18s]: 2.0 Result Flagging Label: RIN: 9.90

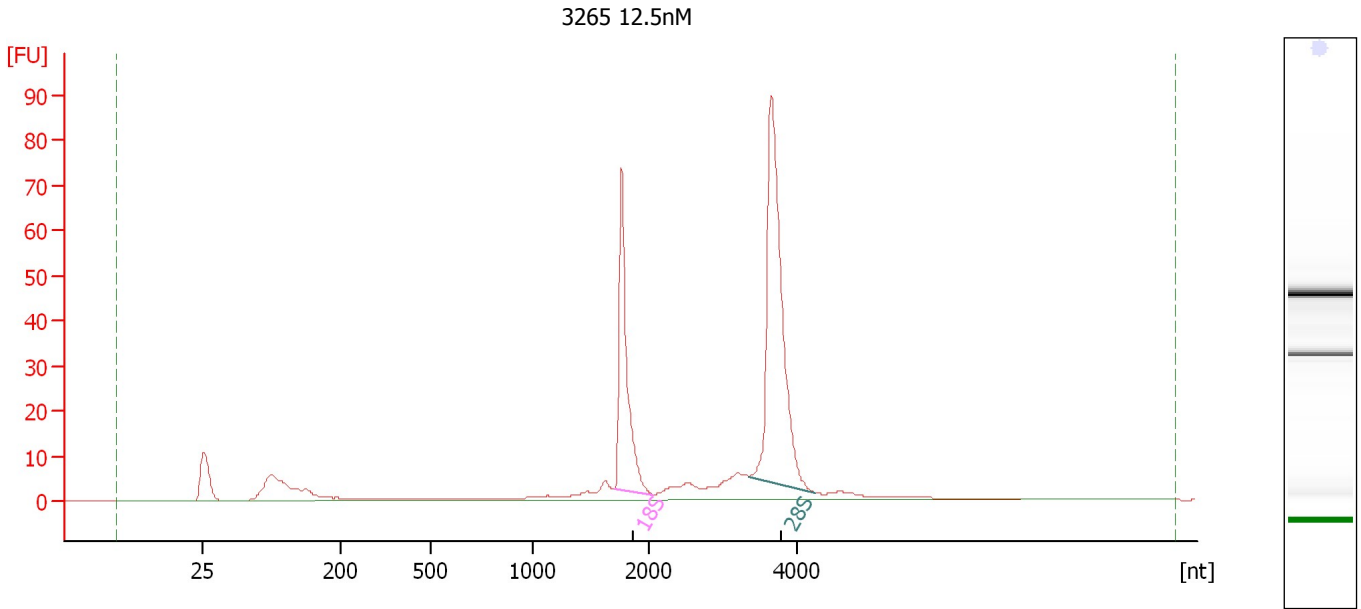
Fragment table for sample 5 : 3265 Control RNA

Name	Start Size [nt]	End Size [nt]	Area	% of total Area
18S	1,693	2,030	72.8	20.7
28S	3,273	4,231	143.3	40.8

Assay Class: Eukaryote Total RNA Nano
Data Path: C:\...ents and Settings\Bioanalyzer\2013-07-16\2013-07-16_001.xad

Created: 7/16/2013 1:23:34 PM
Modified: 7/16/2013 1:47:25 PM

Electropherogram Summary Continued ...



Overall Results for sample 6 : 3265 12.5nM

RNA Area: 342.5 RNA Integrity Number (RIN): 9.8 (B.02.08)
RNA Concentration: 384 ng/μl Result Flagging Color:
rRNA Ratio [28s / 18s]: 1.9 Result Flagging Label: RIN: 9.80

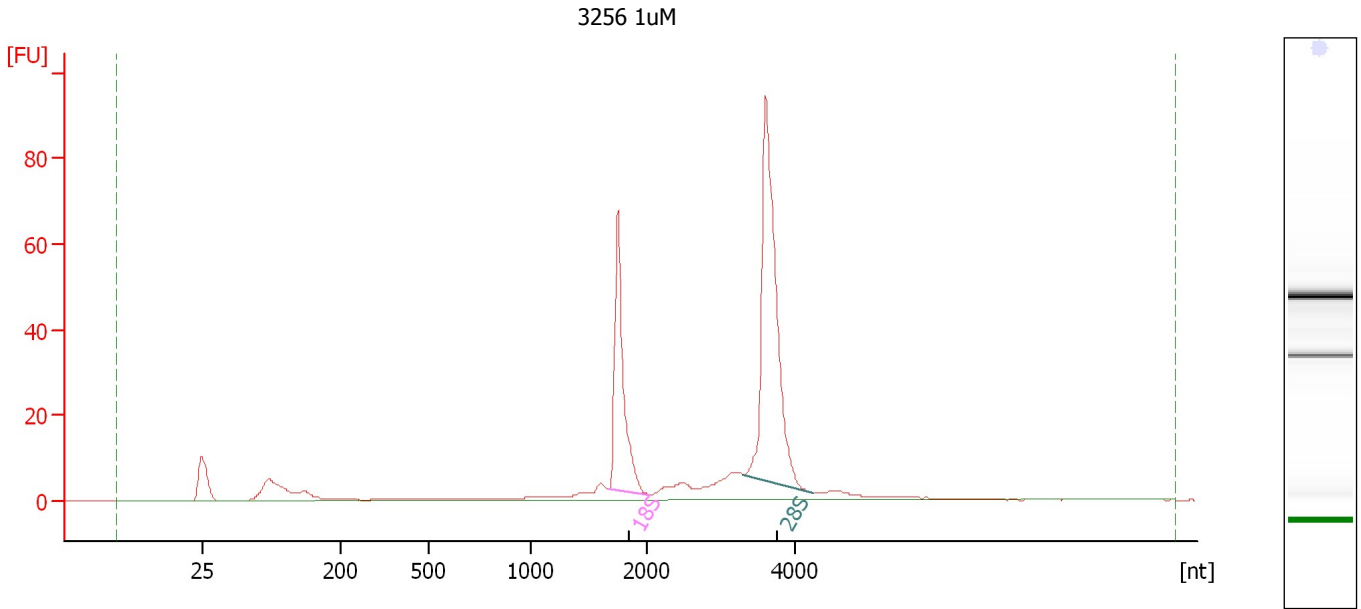
Fragment table for sample 6 : 3265 12.5nM

Name	Start Size [nt]	End Size [nt]	Area	% of total Area
18S	1,706	2,054	70.0	20.4
28S	3,334	4,240	131.9	38.5

Assay Class: Eukaryote Total RNA Nano
Data Path: C:\...ents and Settings\Bioanalyzer\2013-07-16\2013-07-16_001.xad

Created: 7/16/2013 1:23:34 PM
Modified: 7/16/2013 1:47:25 PM

Electropherogram Summary Continued ...



Overall Results for sample 7 : 3256 1uM

RNA Area: 339.2 RNA Integrity Number (RIN): 10 (B.02.08)
RNA Concentration: 380 ng/μl Result Flagging Color:
rRNA Ratio [28s / 18s]: 2.0 Result Flagging Label: RIN:10

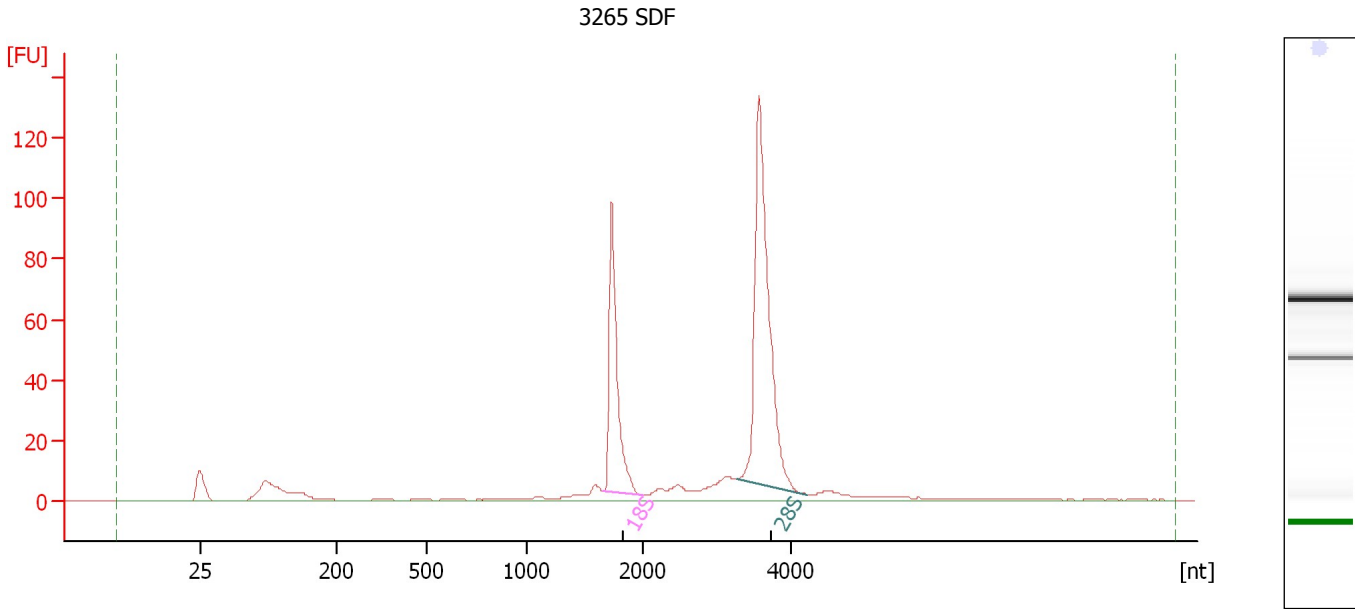
Fragment table for sample 7 : 3256 1uM

Name	Start Size [nt]	End Size [nt]	Area	% of total Area
18S	1,668	2,009	67.8	20.0
28S	3,292	4,229	137.8	40.6

Assay Class: Eukaryote Total RNA Nano
Data Path: C:\...ents and Settings\Bioanalyzer\2013-07-16\2013-07-16_001.xad

Created: 7/16/2013 1:23:34 PM
Modified: 7/16/2013 1:47:25 PM

Electropherogram Summary Continued ...



Overall Results for sample 8 : 3265 SDF

RNA Area: 449.2 RNA Integrity Number (RIN): 10 (B.02.08)
RNA Concentration: 504 ng/μl Result Flagging Color:
rRNA Ratio [28s / 18s]: 2.0 Result Flagging Label: RIN:10

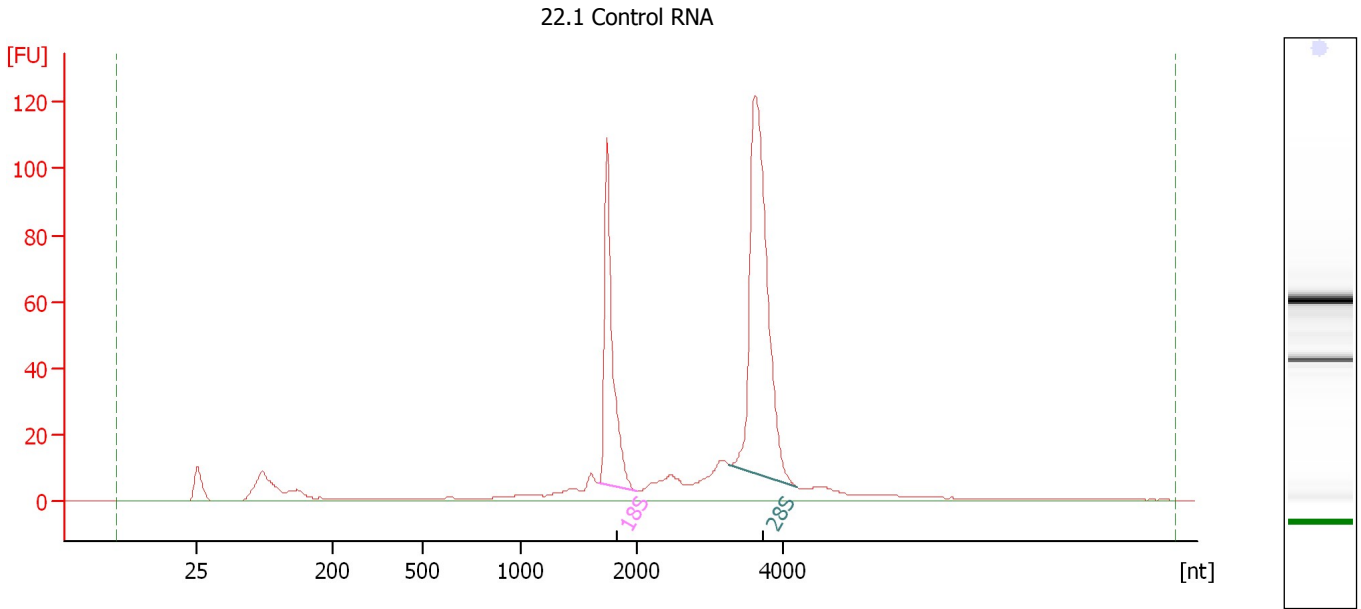
Fragment table for sample 8 : 3265 SDF

Name	Start Size [nt]	End Size [nt]	Area	% of total Area
18S	1,646	2,006	92.6	20.6
28S	3,265	4,221	189.9	42.3

Assay Class: Eukaryote Total RNA Nano
Data Path: C:\...ents and Settings\Bioanalyzer\2013-07-16\2013-07-16_001.xad

Created: 7/16/2013 1:23:34 PM
Modified: 7/16/2013 1:47:25 PM

Electropherogram Summary Continued ...



Overall Results for sample 9 : 22.1 Control RNA

RNA Area: 574.1 RNA Integrity Number (RIN): 9.6 (B.02.08)
RNA Concentration: 644 ng/μl Result Flagging Color:
rRNA Ratio [28s / 18s]: 2.0 Result Flagging Label: RIN: 9.60

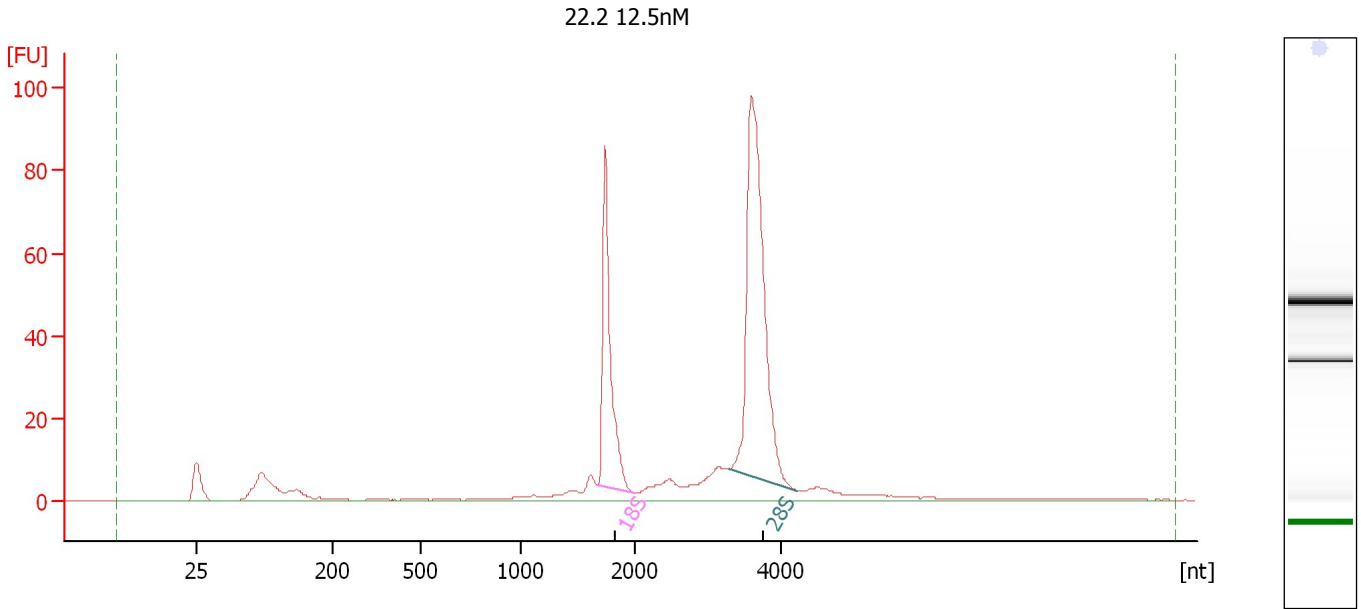
Fragment table for sample 9 : 22.1 Control RNA

Name	Start Size [nt]	End Size [nt]	Area	% of total Area
18S	1,668	1,991	108.3	18.9
28S	3,254	4,186	215.5	37.5

Assay Class: Eukaryote Total RNA Nano
Data Path: C:\...ents and Settings\Bioanalyzer\2013-07-16\2013-07-16_001.xad

Created: 7/16/2013 1:23:34 PM
Modified: 7/16/2013 1:47:25 PM

Electropherogram Summary Continued ...



Overall Results for sample 10 : 22.2 12.5nM

RNA Area:	431.2	RNA Integrity Number (RIN):	9.9 (B.02.08)
RNA Concentration:	483 ng/μl	Result Flagging Color:	
rRNA Ratio [28s / 18s]:	2.0	Result Flagging Label:	RIN: 9.90

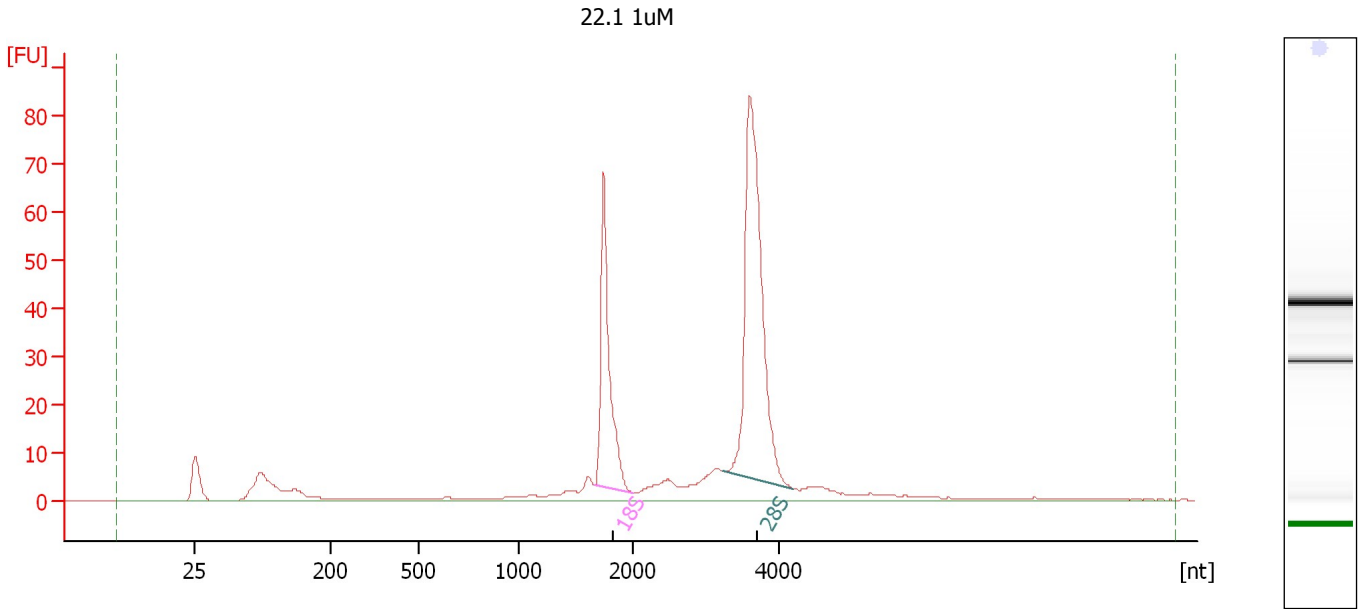
Fragment table for sample 10 : 22.2 12.5nM

Name	Start Size [nt]	End Size [nt]	Area	% of total Area
18S	1,675	1,990	83.5	19.4
28S	3,284	4,218	170.8	39.6

Assay Class: Eukaryote Total RNA Nano
Data Path: C:\...ents and Settings\Bioanalyzer\2013-07-16\2013-07-16_001.xad

Created: 7/16/2013 1:23:34 PM
Modified: 7/16/2013 1:47:25 PM

Electropherogram Summary Continued ...



Overall Results for sample 11 : 22.1 1uM

RNA Area: 374.5 RNA Integrity Number (RIN): 9.8 (B.02.08)
RNA Concentration: 420 ng/μl Result Flagging Color:
rRNA Ratio [28s / 18s]: 2.1 Result Flagging Label: RIN: 9.80

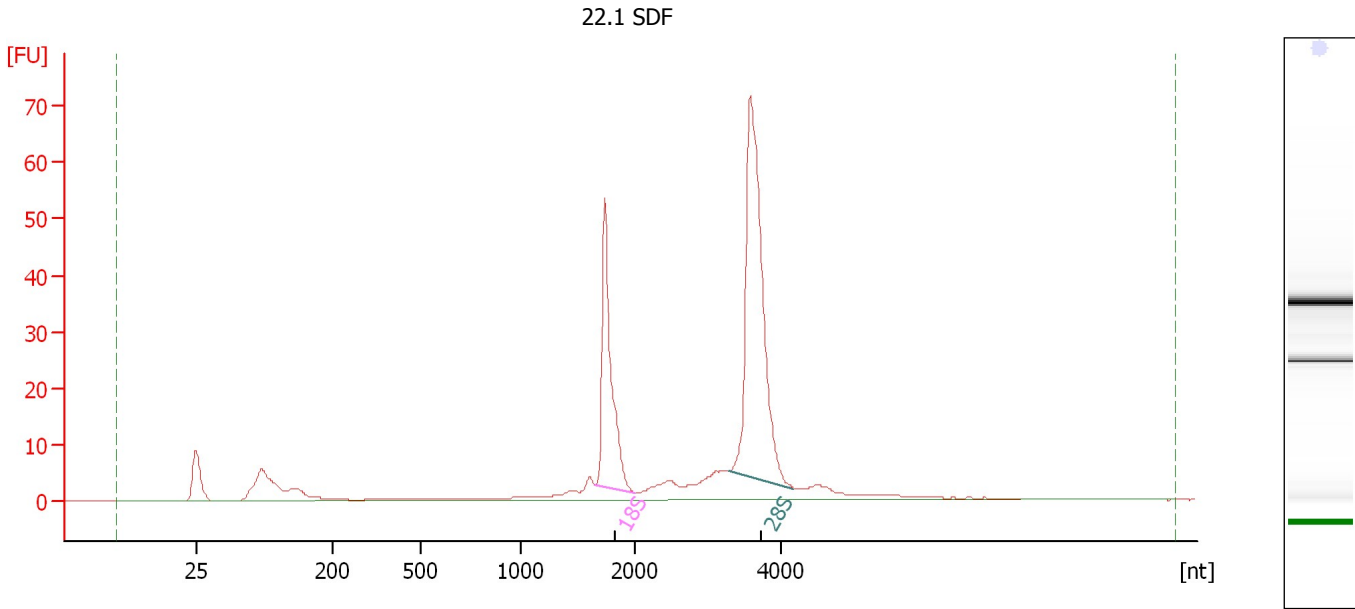
Fragment table for sample 11 : 22.1 1uM

Name	Start Size [nt]	End Size [nt]	Area	% of total Area
18S	1,674	1,989	70.5	18.8
28S	3,241	4,192	145.1	38.7

Assay Class: Eukaryote Total RNA Nano
 Data Path: C:\...ents and Settings\Bioanalyzer\2013-07-16\2013-07-16_001.xad

Created: 7/16/2013 1:23:34 PM
 Modified: 7/16/2013 1:47:25 PM

Electropherogram Summary Continued ...



Overall Results for sample 12 : 22.1 SDF

RNA Area:	309.8	RNA Integrity Number (RIN):	10 (B.02.08)
RNA Concentration:	347 ng/μl	Result Flagging Color:	
rRNA Ratio [28s / 18s]:	2.0	Result Flagging Label:	RIN:10

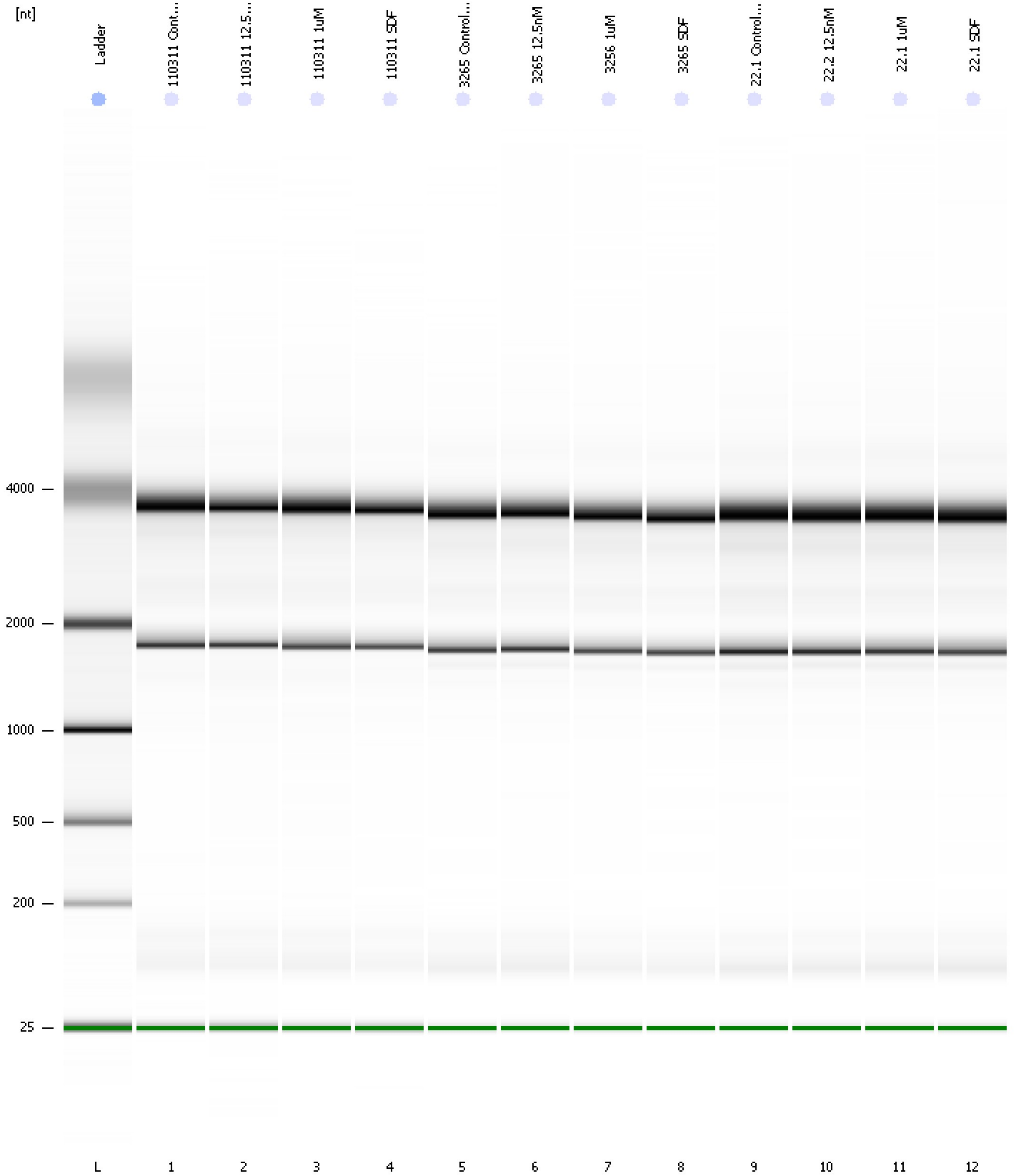
Fragment table for sample 12 : 22.1 SDF

Name	Start Size [nt]	End Size [nt]	Area	% of total Area
18S	1,657	2,000	59.2	19.1
28S	3,284	4,160	120.8	39.0

Assay Class: Eukaryote Total RNA Nano
Data Path: C:\...ents and Settings\Bioanalyzer\2013-07-16\2013-07-16_001.xad

Created: 7/16/2013 1:23:34 PM
Modified: 7/16/2013 1:47:25 PM

Gel Image



Assay Class: Eukaryote Total RNA Nano
 Data Path: C:\...ents and Settings\Bioanalyzer\2013-07-16\2013-07-16_001.xad

Created: 7/16/2013 1:23:34 PM
 Modified: 7/16/2013 1:47:25 PM

Run Logbook

Description	Number	Source	Category	Sub Category	Time	Time Zone	User	Host
Run ended on port 1 (Number of wells acquired: 13)		Instrument	Run		7/16/2013 1:47:22 PM	(GMT --07:00) Pacific Standard Time	UC Davis	D8XSMGH1
Run started on port 1 (File: C:\Documents and Settings\Bioanalyzer\2013-07-16\2013-07-16_001.xad)		Instrument	Run		7/16/2013 1:23:39 PM	(GMT --07:00) Pacific Standard Time	UC Davis	D8XSMGH1
Product Number : G2938B		Instrument	Run		7/16/2013 1:23:39 PM	(GMT --07:00) Pacific Standard Time	UC Davis	D8XSMGH1
Name :		Instrument	Run		7/16/2013 1:23:39 PM	(GMT --07:00) Pacific Standard Time	UC Davis	D8XSMGH1
Vendor : Agilent Technologies		Instrument	Run		7/16/2013 1:23:39 PM	(GMT --07:00) Pacific Standard Time	UC Davis	D8XSMGH1
Serial# : DE13701086		Instrument	Run		7/16/2013 1:23:39 PM	(GMT --07:00) Pacific Standard Time	UC Davis	D8XSMGH1
Firmware : C.01.069		Instrument	Run		7/16/2013 1:23:39 PM	(GMT --07:00) Pacific Standard Time	UC Davis	D8XSMGH1
Cartridge : Electrode		Instrument	Run		7/16/2013 1:23:39 PM	(GMT --07:00) Pacific Standard Time	UC Davis	D8XSMGH1