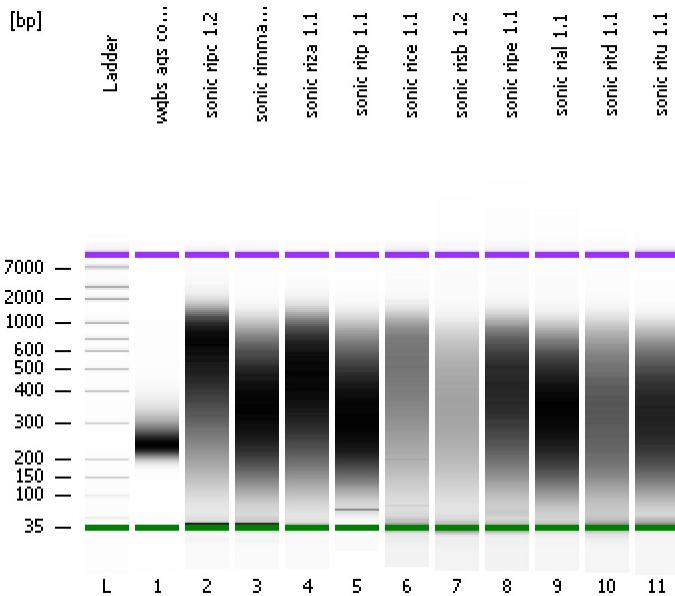


Assay Class: High Sensitivity DNA Assay  
Data Path: C:\...ents and Settings\Bioanalyzer\2013-07-16\2013-07-16\_002.xad

Created: 7/16/2013 3:17:43 PM  
Modified: 7/16/2013 4:00:07 PM

**Electrophoresis File Run Summary**



Instrument Information:

Instrument Name: DE13701086      Firmware: C.01.069  
Serial#: DE13701086      Type: G2938B

Assay Information:

Assay Origin Path: C:\Program Files\Agilent\2100 bioanalyzer\2100 expert\assays\dsDNA\High Sensitivity DNA.xsy  
Assay Class: High Sensitivity DNA Assay  
Version: 1.03  
Assay Comments: Copyright © 2003-2010 Agilent Technologies

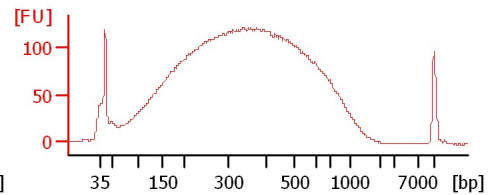
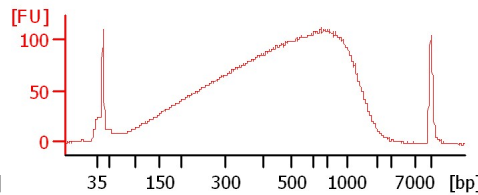
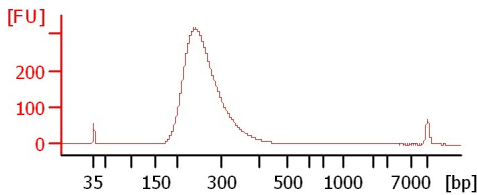
Chip Information:

Chip Lot #:   
Reagent Kit Lot #:   
Chip Comments:

wgbags ags control

sonic ripc 1.2

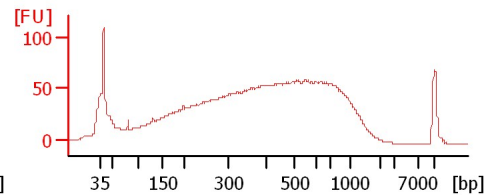
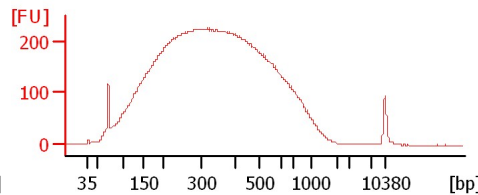
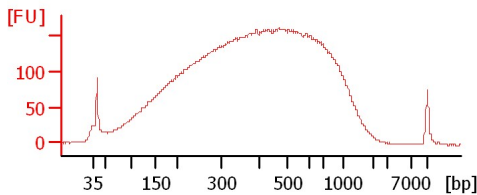
sonic rimma 19



sonic riza 1.1

sonic ritp 1.1

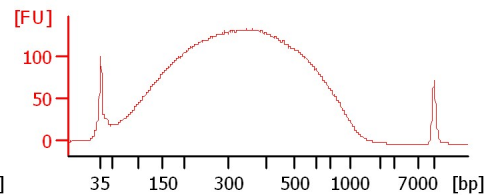
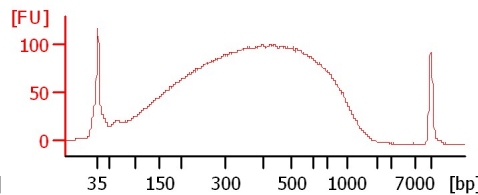
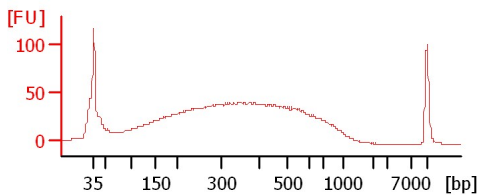
sonic rice 1.1



sonic risb 1.2

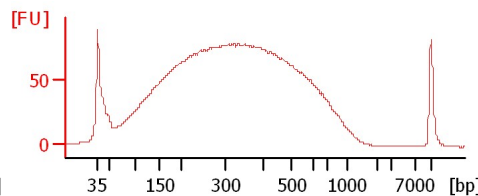
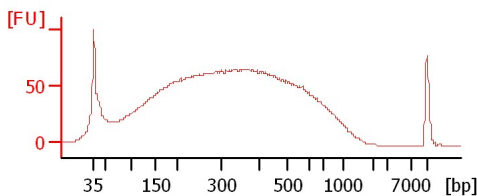
sonic ripe 1.1

sonic rial 1.1



sonic ritd 1.1

sonic ritu 1.1



Assay Class: High Sensitivity DNA Assay  
Data Path: C:\...ents and Settings\Bioanalyzer\2013-07-16\2013-07-16\_002.xad

Created: 7/16/2013 3:17:43 PM  
Modified: 7/16/2013 4:00:07 PM

**Electrophoresis File Run Summary (Chip Summary)**

Sample Name	Sample Comment	Rest. Digest	Status	Observation	Result Label	Result Color
wgbs ags control		<input type="checkbox"/>	✓			
sonic ripc 1.2		<input type="checkbox"/>	✓			
sonic rimma 19		<input type="checkbox"/>	✓			
sonic riza 1.1		<input type="checkbox"/>	✓			
sonic ritp 1.1		<input type="checkbox"/>	✓			
sonic rice 1.1		<input type="checkbox"/>	✓			
sonic risb 1.2		<input type="checkbox"/>	✓			
sonic ripe 1.1		<input type="checkbox"/>	✓			
sonic rial 1.1		<input type="checkbox"/>	✓			
sonic ritd 1.1		<input type="checkbox"/>	✓			
sonic ritu 1.1		<input type="checkbox"/>	✓			
Ladder		<input type="checkbox"/>	✓			

**Chip Lot #**

**Reagent Kit Lot #**

**Chip Comments :**

Assay Class: High Sensitivity DNA Assay  
Data Path: C:\...ents and Settings\Bioanalyzer\2013-07-16\2013-07-16\_002.xad

Created: 7/16/2013 3:17:43 PM  
Modified: 7/16/2013 4:00:07 PM

**Electrophoresis Assay Details**

**General Analysis Settings**

Number of Available Sample and Ladder Wells (Max.) : 12  
Minimum Visible Range [s] : 32  
Maximum Visible Range [s] : 138  
Start Analysis Time Range [s] : 33  
End Analysis Time Range [s] : 137.5  
Ladder Concentration [pg/μl] : 1950  
Uses Standard Area for Ladder Fragments  
Lower Marker Concentration [pg/μl] : 125  
Upper Marker Concentration [pg/μl] : 75  
Used Upper Marker for Quantitation  
Standard Curve Fit is Point to Point  
Show Data Aligned to Lower and Upper Marker

**Integrator Settings**

Integration Start Time [s] : 33.05  
Integration End Time [s] : 137  
Slope Threshold : 0.8  
Height Threshold [FU] : 5  
Area Threshold : 0.1  
Width Threshold [s] : 0.6  
Baseline Plateau [s] : 0.5

**Filter Settings**

Filter Width [s] : 0.5  
Polynomial Order : 4

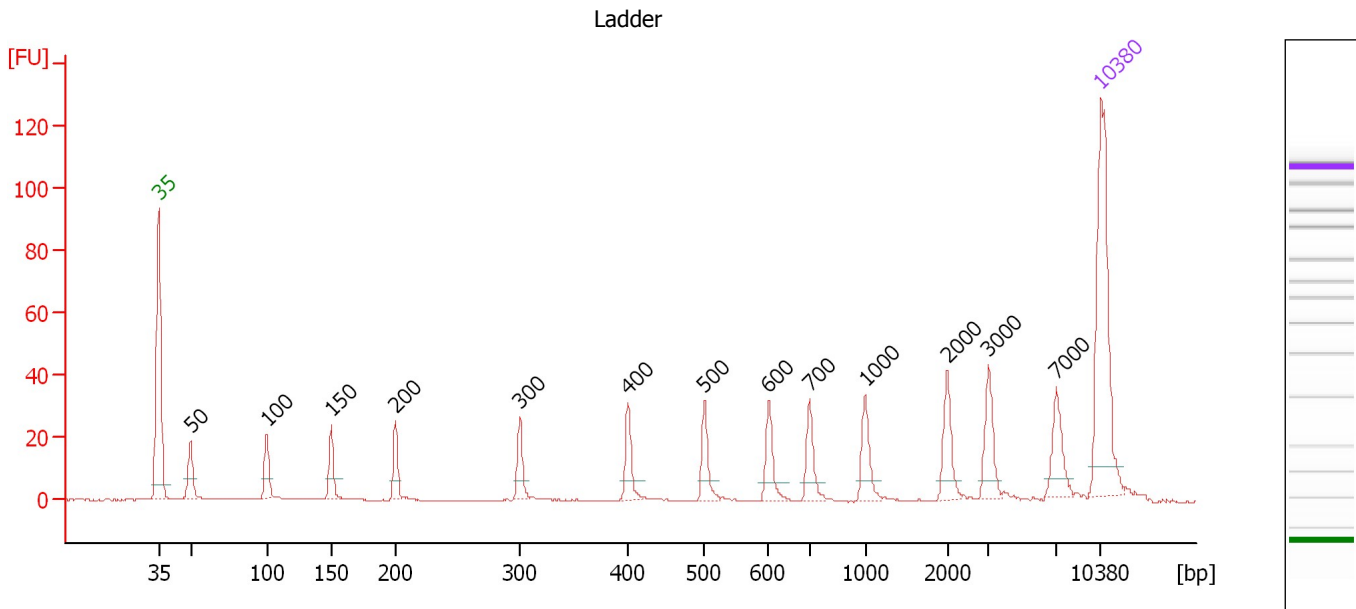
**Ladder**

Ladder Peak	Size	Area
1	35	160
2	50	210
3	100	208
4	150	221
5	200	242
6	300	270
7	400	305
8	500	306
9	600	336
10	700	321
11	1000	366
12	2000	413
13	3000	411
14	7000	400
15	10380	214

Assay Class: High Sensitivity DNA Assay  
 Data Path: C:\...ents and Settings\Bioanalyzer\2013-07-16\2013-07-16\_002.xad

Created: 7/16/2013 3:17:43 PM  
 Modified: 7/16/2013 4:00:07 PM

**Electropherogram Summary**



**Overall Results for Ladder**

Noise: 0.1

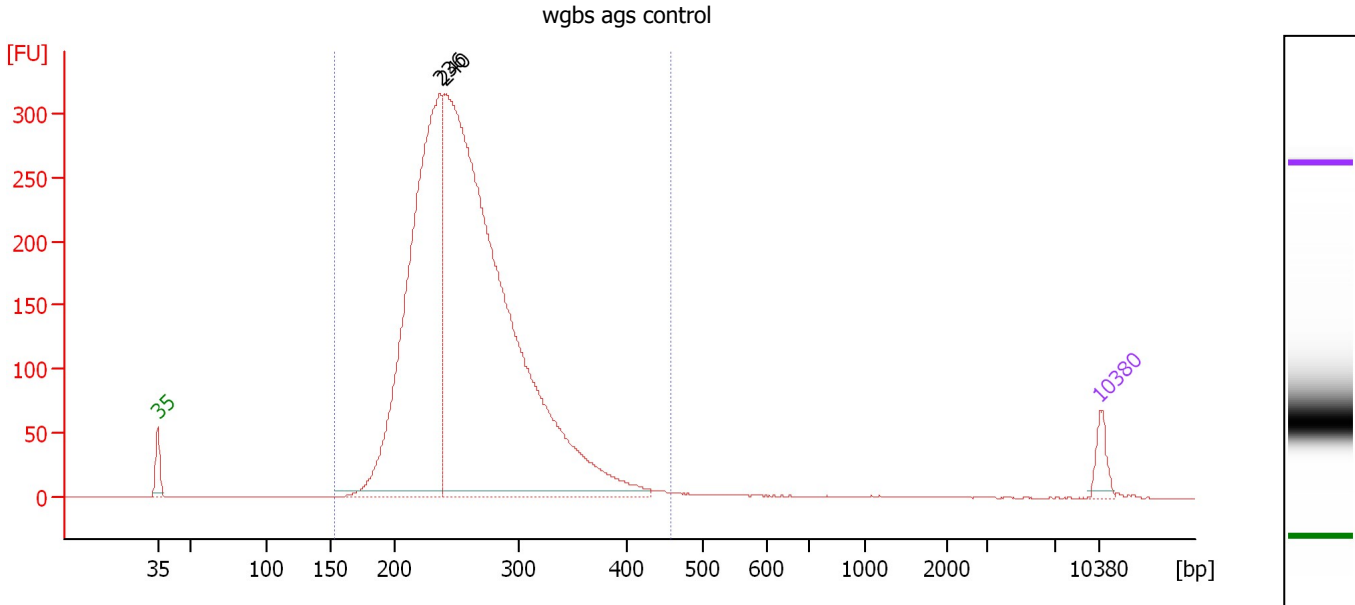
**Peak table for Ladder**

Peak	Size [bp]	Conc. [pg/μl]	Molarity [pmol/l]	Observations
1	35	125.00	5,411.3	Lower Marker
2	50	150.00	4,545.5	Ladder Peak
3	100	150.00	2,272.7	Ladder Peak
4	150	150.00	1,515.2	Ladder Peak
5	200	150.00	1,136.4	Ladder Peak
6	300	150.00	757.6	Ladder Peak
7	400	150.00	568.2	Ladder Peak
8	500	150.00	454.5	Ladder Peak
9	600	150.00	378.8	Ladder Peak
10	700	150.00	324.7	Ladder Peak
11	1,000	150.00	227.3	Ladder Peak
12	2,000	150.00	113.6	Ladder Peak
13	3,000	150.00	75.8	Ladder Peak
14	7,000	150.00	32.5	Ladder Peak
15	10,380	75.00	10.9	Upper Marker

Assay Class: High Sensitivity DNA Assay  
 Data Path: C:\...ents and Settings\Bioanalyzer\2013-07-16\2013-07-16\_002.xad

Created: 7/16/2013 3:17:43 PM  
 Modified: 7/16/2013 4:00:07 PM

**Electropherogram Summary Continued ...**



**Overall Results for sample 1 : wgbs ags control**

Number of peaks found: 2                      Corr. Area 1: 4,139.3  
 Noise: 0.2

**Peak table for sample 1 : wgbs ags control**

Peak	Size [bp]	Conc. [pg/μl]	Molarity [pmol/l]	Observations
1	35	125.00	5,411.3	Lower Marker
2	236	3,351.09	21,484.6	
3	240	6,181.66	39,071.5	
4	10,380	75.00	10.9	Upper Marker

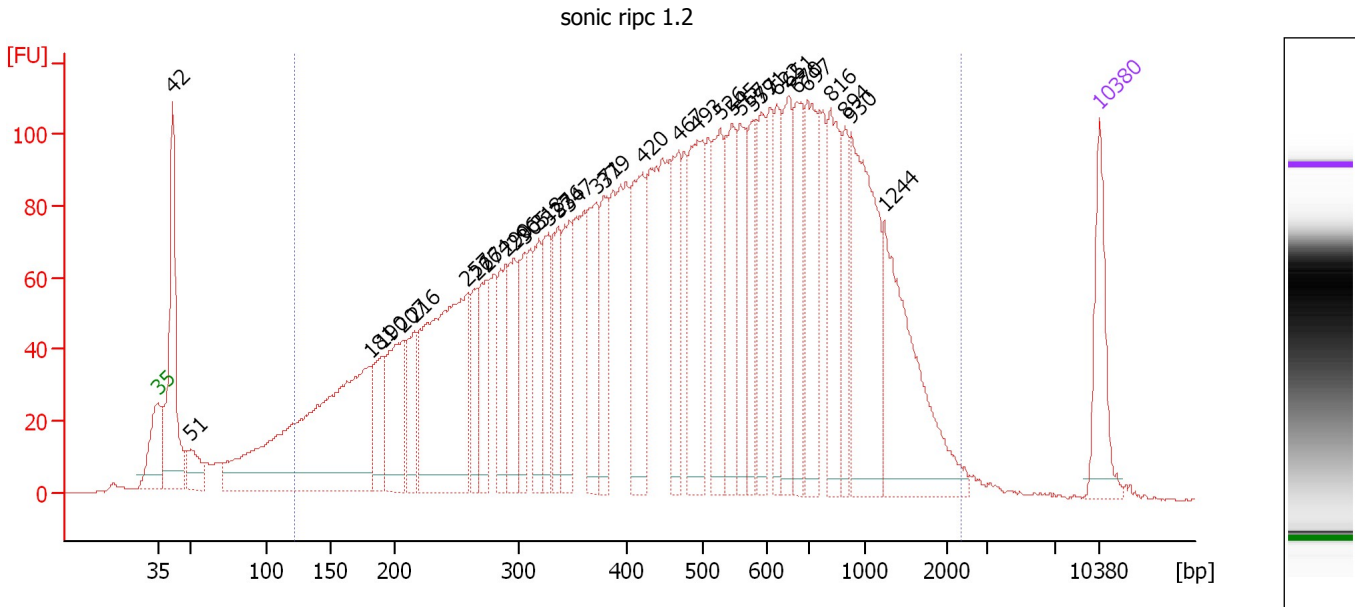
**Region table for sample 1 : wgbs ags control**

From [bp]	To [bp]	Average Size [bp]	Molarity [pmol/l]	Conc. [pg/μl]	Corr. Area	% of Total	Size distribution in CV [%]	Color
153	458	260	55,239.8	9,242.10	4,139.3	99	16.9	Blue

Assay Class: High Sensitivity DNA Assay  
 Data Path: C:\...ents and Settings\Bioanalyzer\2013-07-16\2013-07-16\_002.xad

Created: 7/16/2013 3:17:43 PM  
 Modified: 7/16/2013 4:00:07 PM

**Electropherogram Summary Continued ...**



**Overall Results for sample 2 : sonic ripc 1.2**

Number of peaks found: 34                      Corr. Area 1: 4,627.4  
 Noise: 0.1

**Peak table for sample 2 : sonic ripc 1.2**

Peak	Size [bp]	Conc. [pg/μl]	Molarity [pmol/l]	Observations
1	35	125.00	5,411.3	Lower Marker
2	42	285.90	10,302.1	
3	51	52.25	1,561.3	
4	181	617.48	5,178.2	
5	190	92.75	739.7	
6	207	157.27	1,151.3	
7	216	82.75	580.1	
8	257	431.85	2,545.8	
9	266	71.90	410.0	
10	274	95.27	527.1	
11	290	103.35	540.4	
12	296	99.48	509.2	
13	305	82.07	407.9	
14	318	83.49	397.6	
15	327	96.23	446.5	
16	336	90.22	406.8	
17	347	102.21	446.9	
18	371	133.70	545.9	
19	379	91.91	367.6	
20	420	159.91	576.3	
21	467	120.87	391.8	
22	493	180.53	555.3	
23	526	132.60	382.2	
24	545	130.68	363.2	
25	557	98.57	268.0	
26	577	90.75	238.4	

Assay Class: High Sensitivity DNA Assay  
 Data Path: C:\...ents and Settings\Bioanalyzer\2013-07-16\2013-07-16\_002.xad

Created: 7/16/2013 3:17:43 PM  
 Modified: 7/16/2013 4:00:07 PM

**Electropherogram Summary Continued ...**

**... Peak table for sample 2 : sonic ripc 1.2**

Peak	Size [bp]	Conc. [pg/µl]	Molarity [pmol/l]	Observations
27	591	96.80	248.3	
28	622	85.38	207.9	
29	651	117.65	273.6	
30	670	111.76	252.6	
31	697	154.51	335.9	
32	816	133.08	247.0	
33	894	67.00	113.5	
34	930	239.22	389.7	
35	1,244	219.34	267.2	
36	▶ 10,380	75.00	10.9	Upper Marker

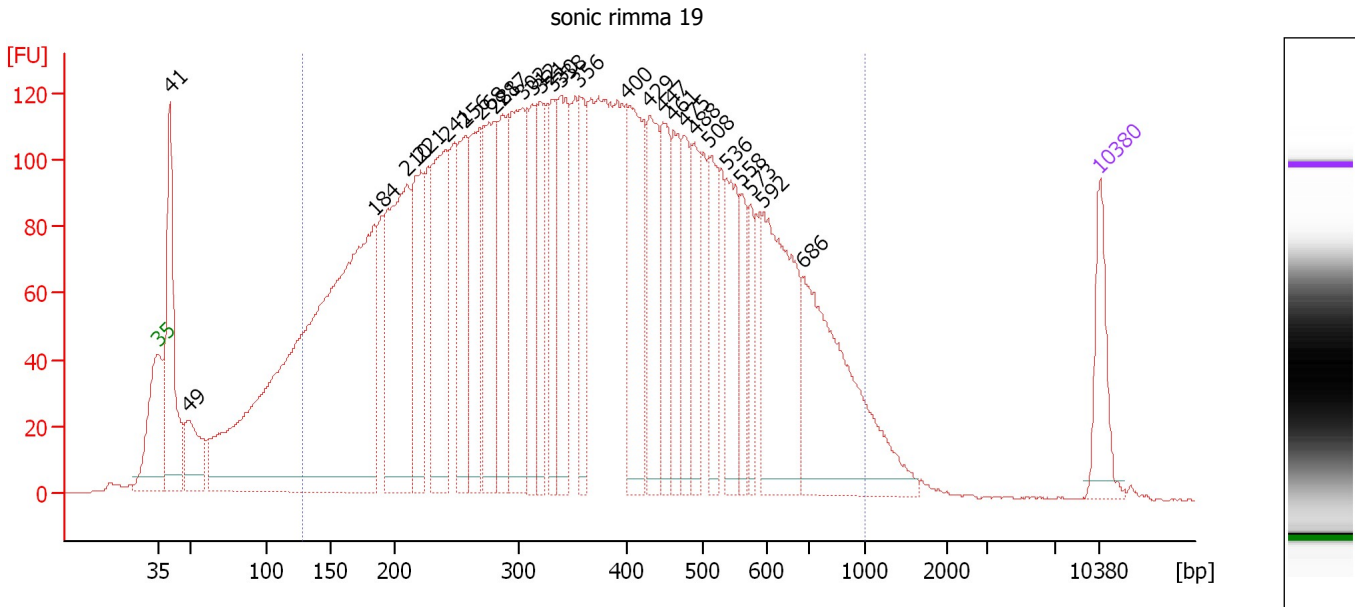
**Region table for sample 2 : sonic ripc 1.2**

From [bp]	To [bp]	Average Size [bp]	Molarity [pmol/l]	Conc. [pg/µl]	Corr. Area	% of Total	Size distribution in CV [%]	Color
122	2,367	558	24,585.2	5,630.51	4,627.4	92	62.3	■

Assay Class: High Sensitivity DNA Assay  
 Data Path: C:\...ents and Settings\Bioanalyzer\2013-07-16\2013-07-16\_002.xad

Created: 7/16/2013 3:17:43 PM  
 Modified: 7/16/2013 4:00:07 PM

**Electropherogram Summary Continued ...**



**Overall Results for sample 3 : sonic rimma 19**

Number of peaks found: 28                      Corr. Area 1: 5,607.1  
 Noise: 0.2

**Peak table for sample 3 : sonic rimma 19**

Peak	Size [bp]	Conc. [pg/μl]	Molarity [pmol/l]	Observations
1	35	125.00	5,411.3	Lower Marker
2	41	351.93	13,082.2	
3	49	124.95	3,832.5	
4	184	1,567.14	12,923.3	
5	210	470.41	3,390.4	
6	221	218.61	1,498.5	
7	241	320.52	2,013.5	
8	256	211.98	1,252.5	
9	268	231.79	1,309.3	
10	281	273.51	1,474.7	
11	287	186.71	986.0	
12	302	311.20	1,558.8	
13	312	148.72	721.9	
14	321	136.31	644.1	
15	330	134.03	614.8	
16	338	203.00	909.2	
17	356	126.72	539.5	
18	400	263.90	998.7	
19	429	187.01	660.2	
20	447	142.16	482.0	
21	461	122.44	402.2	
22	475	112.09	357.6	
23	488	115.83	359.9	
24	508	115.69	344.9	
25	536	133.10	376.4	
26	558	72.90	198.1	



Assay Class: High Sensitivity DNA Assay  
 Data Path: C:\...ents and Settings\Bioanalyzer\2013-07-16\2013-07-16\_002.xad


Created: 7/16/2013 3:17:43 PM  
 Modified: 7/16/2013 4:00:07 PM

### Electropherogram Summary Continued ...

#### ... Peak table for sample 3 : sonic rimma 19

Peak	Size [bp]	Conc. [pg/μl]	Molarity [pmol/l]	Observations
27	573	68.45	181.0	
28	592	298.32	763.6	
29	686	375.18	828.6	
30	10,380	75.00	10.9	Upper Marker

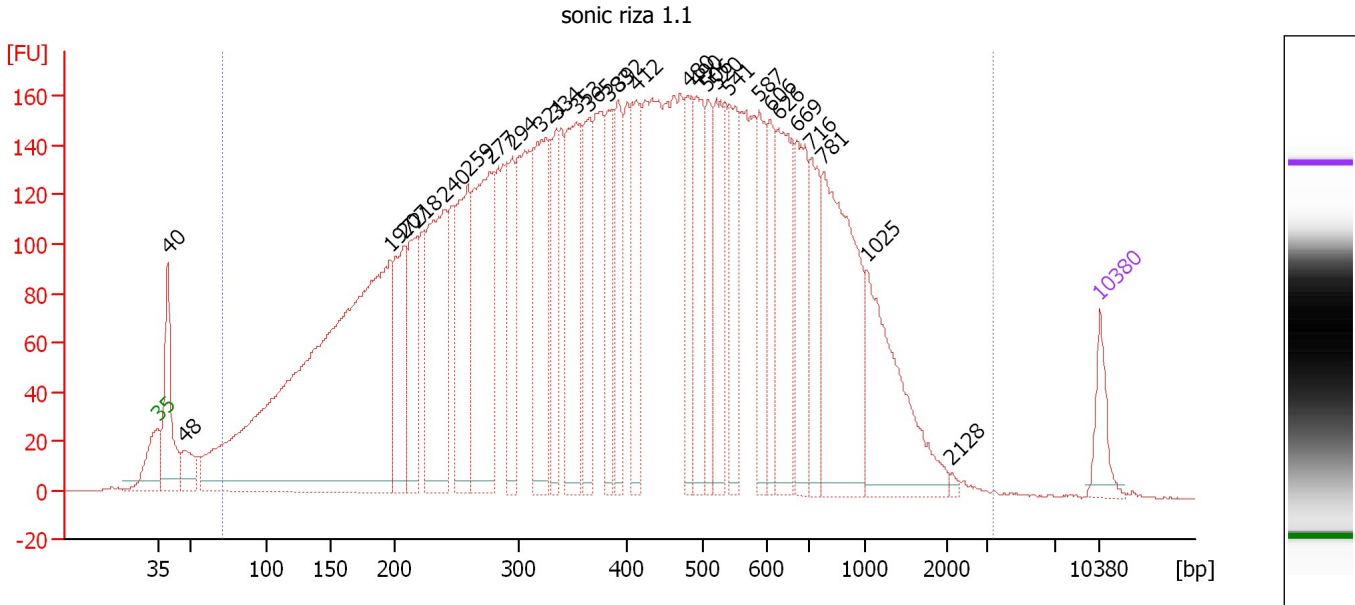
#### Region table for sample 3 : sonic rimma 19

From [bp]	To [bp]	Average Size [bp]	Molarity [pmol/l]	Conc. [pg/μl]	Corr. Area	% of Total	Size distribution in CV [%]	Color
128	1,000	383	40,232.7	7,532.88	5,607.1	87	44.5	

Assay Class: High Sensitivity DNA Assay  
 Data Path: C:\...ents and Settings\Bioanalyzer\2013-07-16\2013-07-16\_002.xad

Created: 7/16/2013 3:17:43 PM  
 Modified: 7/16/2013 4:00:07 PM

**Electropherogram Summary Continued ...**



**Overall Results for sample 4 : sonic riza 1.1**

Number of peaks found: 29                      Corr. Area 1: 8,170.6  
 Noise: 0.2

**Peak table for sample 4 : sonic riza 1.1**

Peak	Size [bp]	Conc. [pg/μl]	Molarity [pmol/l]	Observations
1	35	125.00	5,411.3	Lower Marker
2	40	355.67	13,572.2	
3	48	107.11	3,385.3	
4	197	2,715.18	20,933.2	
5	207	361.99	2,643.9	
6	218	285.46	1,984.1	
7	240	636.76	4,027.0	
8	259	461.76	2,704.9	
9	277	642.66	3,518.7	
10	294	273.09	1,406.0	
11	321	487.02	2,301.0	
12	334	232.26	1,053.5	
13	353	436.86	1,877.1	
14	365	242.05	1,005.3	
15	383	238.26	941.6	
16	392	253.37	980.5	
17	412	281.88	1,037.2	
18	480	207.63	655.8	
19	490	299.01	924.0	
20	506	199.59	597.7	
21	520	270.26	788.1	
22	541	230.02	644.3	
23	587	209.15	540.2	
24	606	176.84	441.8	
25	626	345.08	834.8	
26	669	273.60	619.6	

Assay Class: High Sensitivity DNA Assay  
 Data Path: C:\...ents and Settings\Bioanalyzer\2013-07-16\2013-07-16\_002.xad


Created: 7/16/2013 3:17:43 PM  
 Modified: 7/16/2013 4:00:07 PM

### Electropherogram Summary Continued ...

#### ... Peak table for sample 4 : sonic riza 1.1

Peak	Size [bp]	Conc. [pg/μl]	Molarity [pmol/l]	Observations
27	716	202.12	427.6	
28	781	640.17	1,242.7	
29	1,025	414.13	612.5	
30	2,128	8.04	5.7	
31	10,380	75.00	10.9	Upper Marker

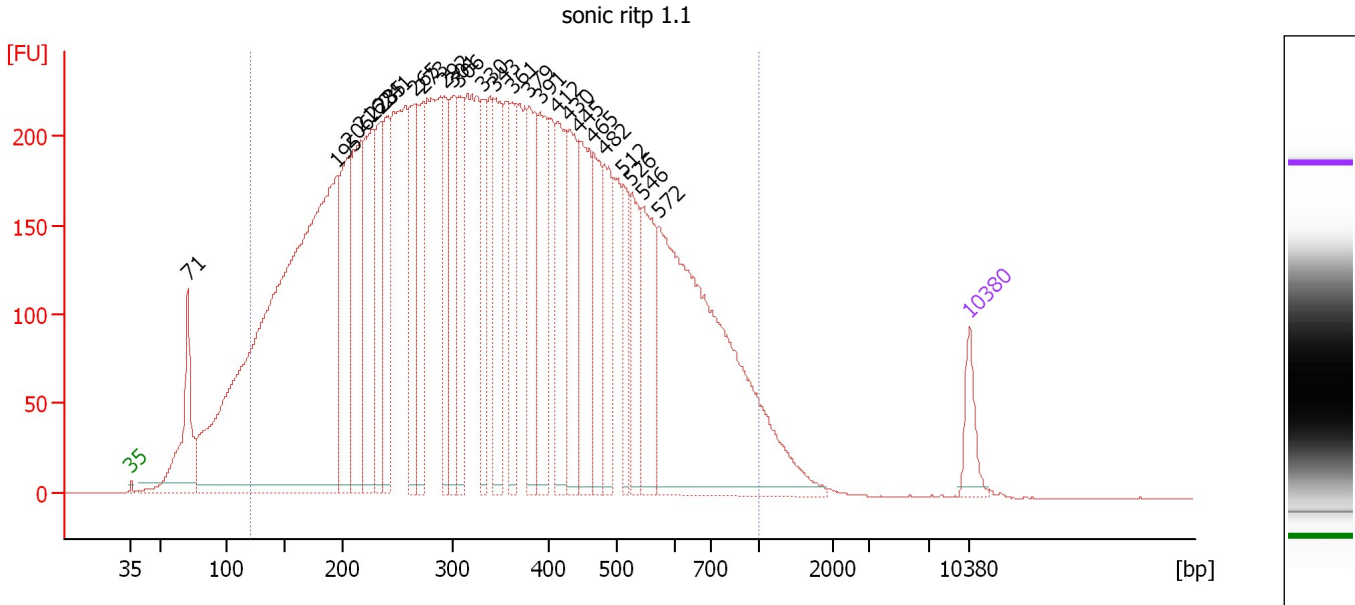
#### Region table for sample 4 : sonic riza 1.1

From [bp]	To [bp]	Average Size [bp]	Molarity [pmol/l]	Conc. [pg/μl]	Corr. Area	% of Total	Size distribution in CV [%]	Color
72	3,285	465	83,262.6	15,139.46	8,170.6	97	64.5	

Assay Class: High Sensitivity DNA Assay  
 Data Path: C:\...ents and Settings\Bioanalyzer\2013-07-16\2013-07-16\_002.xad

Created: 7/16/2013 3:17:43 PM  
 Modified: 7/16/2013 4:00:07 PM

**Electropherogram Summary Continued ...**



**Overall Results for sample 5 : sonic ritp 1.1**

Number of peaks found: 26                      Corr. Area 1: 11,714.0  
 Noise: 0.2

**Peak table for sample 5 : sonic ritp 1.1**

Peak	Size [bp]	Conc. [pg/μl]	Molarity [pmol/l]	Observations
1	35	125.00	5,411.3	Lower Marker
2	71	458.87	9,836.5	
3	195	3,670.08	28,449.6	
4	206	502.49	3,689.3	
5	216	512.42	3,586.6	
6	228	563.63	3,745.4	
7	235	370.61	2,392.1	
8	241	346.20	2,180.9	
9	265	407.66	2,334.7	
10	273	306.68	1,703.7	
11	292	318.97	1,655.3	
12	301	334.13	1,683.4	
13	306	308.27	1,527.7	
14	330	267.22	1,226.2	
15	343	356.91	1,576.6	
16	361	264.57	1,109.3	
17	379	338.30	1,353.9	
18	391	341.56	1,324.1	
19	412	369.47	1,358.2	
20	430	309.28	1,089.3	
21	445	383.49	1,305.5	
22	465	251.63	819.1	
23	482	280.54	882.0	
24	512	170.44	504.3	
25	526	217.22	625.7	
26	546	314.99	873.3	

Assay Class: High Sensitivity DNA Assay  
 Data Path: C:\...ents and Settings\Bioanalyzer\2013-07-16\2013-07-16\_002.xad

Created: 7/16/2013 3:17:43 PM  
 Modified: 7/16/2013 4:00:07 PM

### Electropherogram Summary Continued ...

#### ... Peak table for sample 5 : sonic ritp 1.1

Peak	Size [bp]	Conc. [pg/ $\mu$ l]	Molarity [pmol/l]	Observations
27	572	1,481.76	3,927.8	
28	▶ 10,380	75.00	10.9	Upper Marker

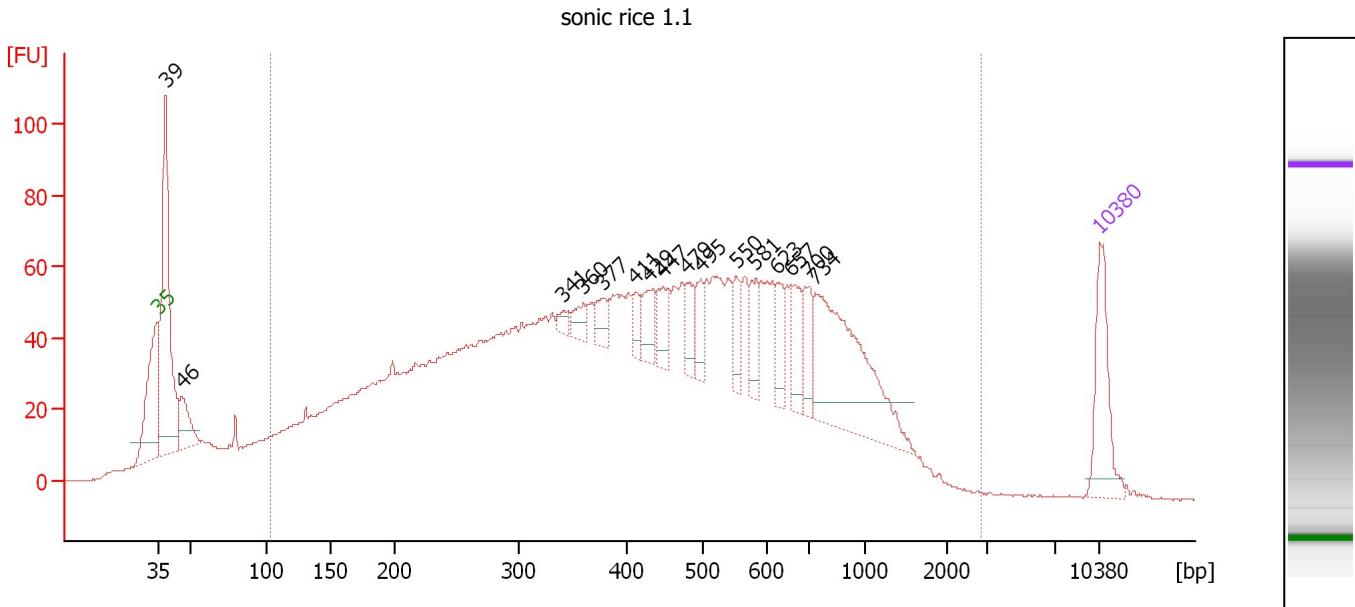
#### Region table for sample 5 : sonic ritp 1.1

From [bp]	To [bp]	Average Size [bp]	Molarity [pmol/l]	Conc. [pg/ $\mu$ l]	Corr. Area	% of Total	Size distribution in CV [%]	Color
120	1,000	369	89,817.8	15,974.45	11,714.0	92	45.7	■

Assay Class: High Sensitivity DNA Assay  
 Data Path: C:\...ents and Settings\Bioanalyzer\2013-07-16\2013-07-16\_002.xad

Created: 7/16/2013 3:17:43 PM  
 Modified: 7/16/2013 4:00:07 PM

**Electropherogram Summary Continued ...**



**Overall Results for sample 6 : sonic rice 1.1**

Number of peaks found: 16                      Corr. Area 1: 2,795.3  
 Noise: 0.2

**Peak table for sample 6 : sonic rice 1.1**

Peak	Size [bp]	Conc. [pg/μl]	Molarity [pmol/l]	Observations
1	35	125.00	5,411.3	Lower Marker
2	39	381.91	14,862.8	
3	46	67.03	2,184.4	
4	341	12.76	56.7	
5	360	22.75	95.9	
6	377	25.83	103.8	
7	411	21.92	80.8	
8	429	40.40	142.7	
9	447	38.02	129.0	
10	479	29.83	94.3	
11	495	38.06	116.4	
12	550	35.80	98.6	
13	581	40.33	105.1	
14	623	38.81	94.5	
15	657	48.02	110.7	
16	700	48.65	105.4	
17	734	244.43	504.5	
18	10,380	75.00	10.9	Upper Marker

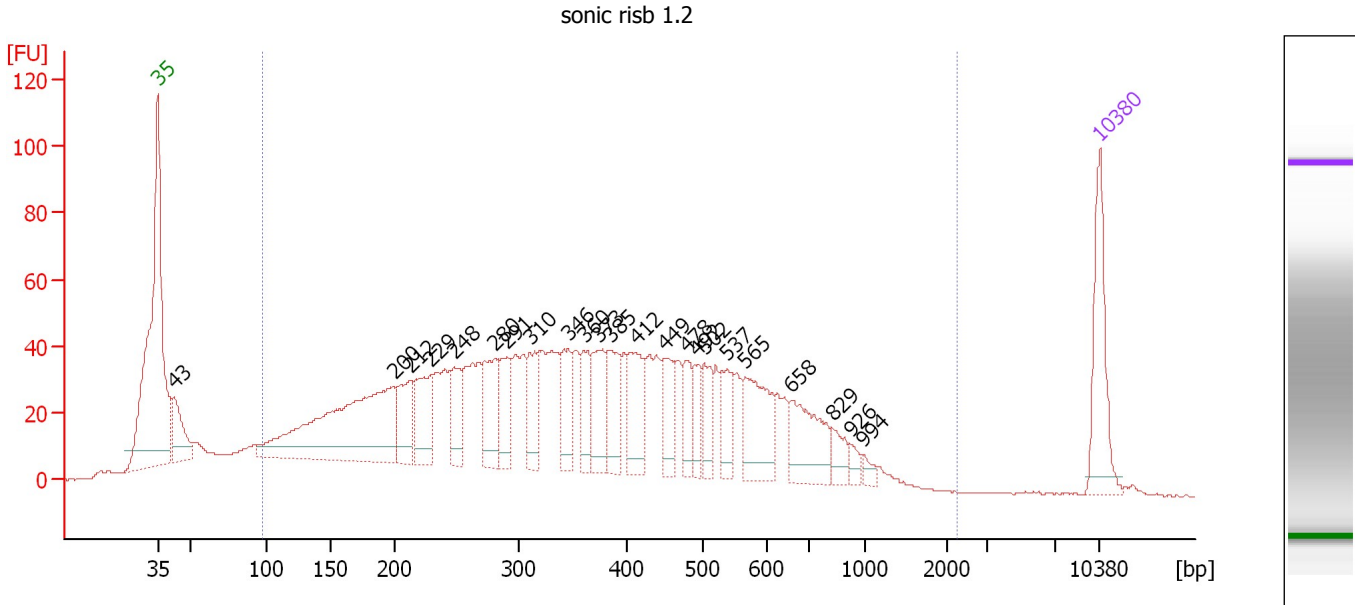
**Region table for sample 6 : sonic rice 1.1**

From [bp]	To [bp]	Average Size [bp]	Molarity [pmol/l]	Conc. [pg/μl]	Corr. Area	% of Total	Size distribution in CV [%]	Color
104	2,854	488	22,053.8	4,446.21	2,795.3	87	61.0	Blue

Assay Class: High Sensitivity DNA Assay  
 Data Path: C:\...ents and Settings\Bioanalyzer\2013-07-16\2013-07-16\_002.xad

Created: 7/16/2013 3:17:43 PM  
 Modified: 7/16/2013 4:00:07 PM

**Electropherogram Summary Continued ...**



**Overall Results for sample 7 : sonic risb 1.2**

Number of peaks found: 23                      Corr. Area 1: 1,963.2  
 Noise: 0.1

**Peak table for sample 7 : sonic risb 1.2**

Peak	Size [bp]	Conc. [pg/μl]	Molarity [pmol/l]	Observations
1	35	125.00	5,411.3	Lower Marker
2	43	79.25	2,807.9	
3	200	346.87	2,628.0	
4	212	66.25	473.1	
5	229	80.95	535.3	
6	248	57.67	352.7	
7	280	84.62	458.7	
8	291	55.51	289.4	
9	310	55.71	272.3	
10	346	59.51	260.9	
11	360	51.22	215.4	
12	373	68.40	277.7	
13	385	57.87	227.9	
14	412	71.34	262.2	
15	449	46.70	157.7	
16	478	39.61	125.6	
17	492	31.40	96.7	
18	502	35.70	107.8	
19	537	43.41	122.4	
20	565	90.00	241.3	
21	658	80.62	185.6	
22	829	21.75	39.8	
23	926	10.03	16.4	
24	994	8.05	12.3	
25	10,380	75.00	10.9	Upper Marker

Assay Class: High Sensitivity DNA Assay  
Data Path: C:\...ents and Settings\Bioanalyzer\2013-07-16\2013-07-16\_002.xad

Created: 7/16/2013 3:17:43 PM  
Modified: 7/16/2013 4:00:07 PM

**Electropherogram Summary Continued ...**

... Region table for sample 7 : sonic risb 1.2

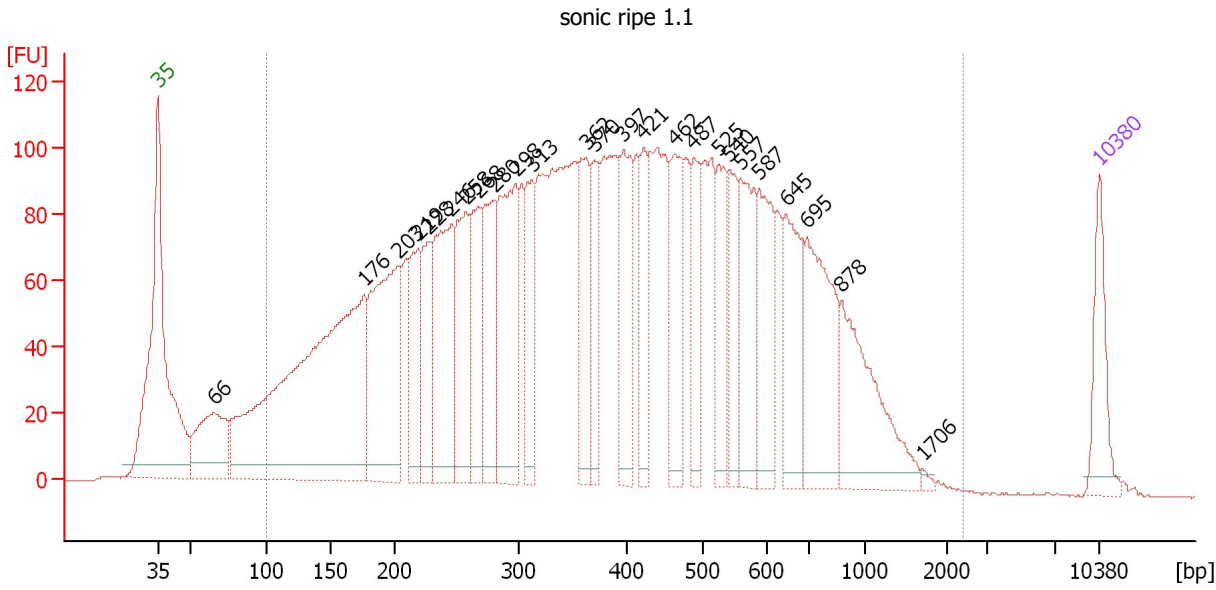
From [bp]	To [bp]	Average Size [bp]	Molarity [pmol/l]	Conc. [pg/μl]	Corr. Area	% of Total	Size distribution in CV [%]	Color
98	2,251	394	14,967.8	2,642.92	1,963.2	91	53.4	■



Assay Class: High Sensitivity DNA Assay  
 Data Path: C:\...ents and Settings\Bioanalyzer\2013-07-16\2013-07-16\_002.xad

Created: 7/16/2013 3:17:43 PM  
 Modified: 7/16/2013 4:00:07 PM

**Electropherogram Summary Continued ...**



**Overall Results for sample 8 : sonic ripe 1.1**

Number of peaks found: 25      Corr. Area 1: 4,835.9  
 Noise: 0.1

**Peak table for sample 8 : sonic ripe 1.1**

Peak	Size [bp]	Conc. [pg/μl]	Molarity [pmol/l]	Observations
1	35	125.00	5,411.3	Lower Marker
2	66	191.55	4,379.2	
3	176	1,012.97	8,713.5	
4	203	387.71	2,890.7	
5	219	143.70	995.2	
6	228	137.08	911.5	
7	246	284.71	1,756.6	
8	258	203.57	1,195.9	
9	268	160.41	908.4	
10	280	185.88	1,006.2	
11	298	299.18	1,523.3	
12	313	132.26	640.9	
13	362	160.57	671.5	
14	370	107.57	440.8	
15	397	151.24	577.2	
16	421	102.24	367.8	
17	462	150.48	493.3	
18	487	109.44	340.7	
19	525	116.05	335.1	
20	540	98.14	275.2	
21	557	172.37	469.0	
22	587	151.92	392.2	
23	645	155.61	365.7	
24	695	232.04	505.7	
25	878	206.24	356.0	
26	1,706	4.31	3.8	

Assay Class: High Sensitivity DNA Assay  
Data Path: C:\...ents and Settings\Bioanalyzer\2013-07-16\2013-07-16\_002.xad

Created: 7/16/2013 3:17:43 PM  
Modified: 7/16/2013 4:00:07 PM

**Electropherogram Summary Continued ...****... Peak table for sample 8 : sonic ripe 1.1**

Peak	Size [bp]	Conc. [pg/ $\mu$ l]	Molarity [pmol/l]	Observations
27	10,380	75.00	10.9	Upper Marker

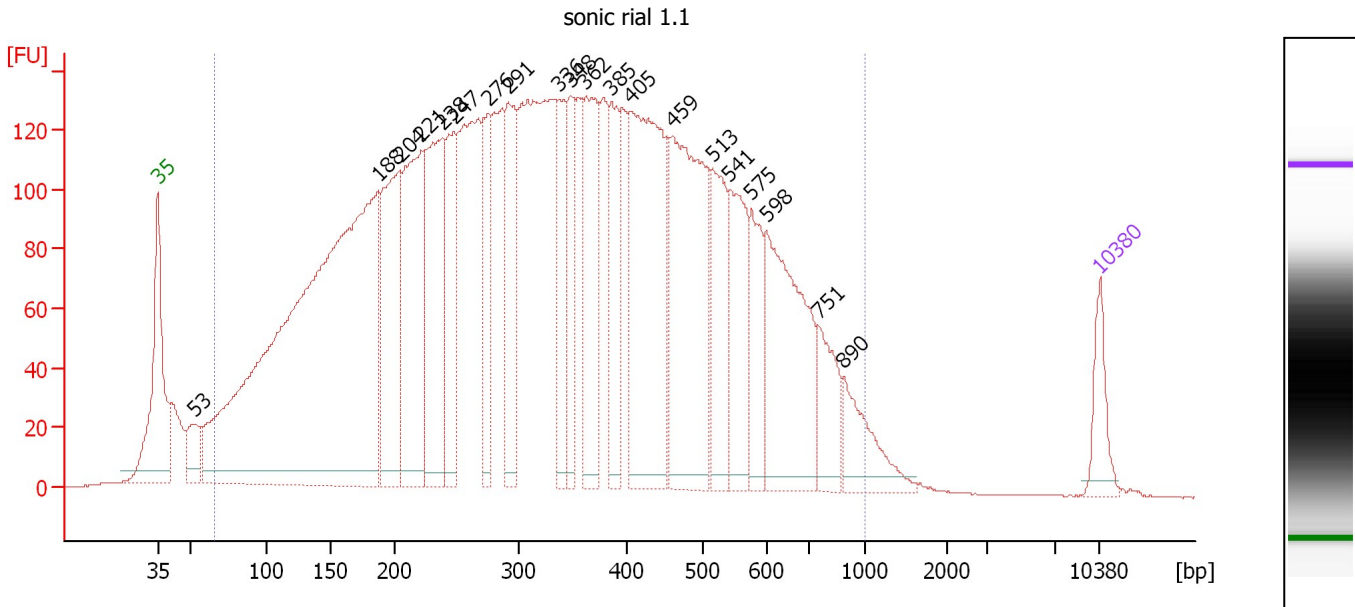
**Region table for sample 8 : sonic ripe 1.1**

From [bp]	To [bp]	Average Size [bp]	Molarity [pmol/l]	Conc. [pg/ $\mu$ l]	Corr. Area	% of Total	Size distribution in CV [%]	Color
100	2,395	429	35,170.9	6,567.83	4,835.9	95	56.6	

Assay Class: High Sensitivity DNA Assay  
 Data Path: C:\...ents and Settings\Bioanalyzer\2013-07-16\2013-07-16\_002.xad

Created: 7/16/2013 3:17:43 PM  
 Modified: 7/16/2013 4:00:07 PM

**Electropherogram Summary Continued ...**



**Overall Results for sample 9 : sonic rial 1.1**

Number of peaks found: 20                      Corr. Area 1: 6,544.7  
 Noise: 0.1

**Peak table for sample 9 : sonic rial 1.1**

Peak	Size [bp]	Conc. [pg/μl]	Molarity [pmol/l]	Observations
1	35	125.00	5,411.3	Lower Marker
2	53	99.17	2,834.2	
3	188	2,664.88	21,529.2	
4	204	512.17	3,805.0	
5	221	611.14	4,183.9	
6	238	546.45	3,476.8	
7	247	282.40	1,729.8	
8	276	242.96	1,335.8	
9	291	326.25	1,696.8	
10	336	235.72	1,061.7	
11	348	200.31	872.9	
12	362	372.06	1,559.4	
13	385	235.82	928.7	
14	405	720.52	2,695.4	
15	459	666.82	2,201.3	
16	513	259.61	766.4	
17	541	268.19	751.7	
18	575	171.50	451.8	
19	598	465.86	1,179.8	
20	751	141.37	285.3	
21	890	142.67	242.9	
22	10,380	75.00	10.9	Upper Marker

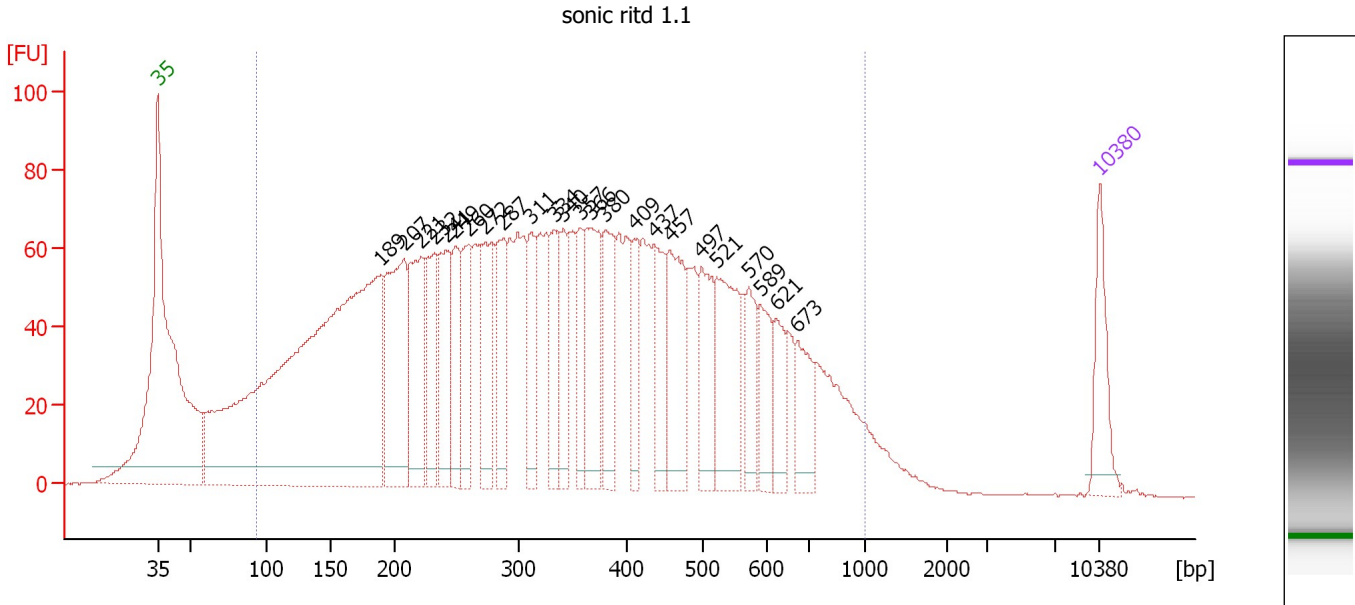
**Region table for sample 9 : sonic rial 1.1**

From [bp]	To [bp]	Average Size [bp]	Molarity [pmol/l]	Conc. [pg/μl]	Corr. Area	% of Total	Size distribution in CV [%]	Color
66	1,000	355	79,302.0	12,137.14	6,544.7	97	48.9	Blue

Assay Class: High Sensitivity DNA Assay  
 Data Path: C:\...ents and Settings\Bioanalyzer\2013-07-16\2013-07-16\_002.xad

Created: 7/16/2013 3:17:43 PM  
 Modified: 7/16/2013 4:00:07 PM

**Electropherogram Summary Continued ...**



**Overall Results for sample 10 : sonic ritd 1.1**

Number of peaks found: 24                      Corr. Area 1: 3,244.0  
 Noise: 0.1

**Peak table for sample 10 : sonic ritd 1.1**

Peak	Size [bp]	Conc. [pg/μl]	Molarity [pmol/l]	Observations
1	35	125.00	5,411.3	Lower Marker
2	189	1,530.35	12,245.2	
3	207	319.62	2,337.2	
4	221	210.42	1,442.6	
5	232	154.78	1,010.7	
6	241	153.29	962.1	
7	249	134.67	820.8	
8	260	123.74	722.1	
9	272	164.98	917.9	
10	287	144.40	761.8	
11	311	106.54	518.4	
12	334	110.73	502.7	
13	340	101.32	451.4	
14	357	98.40	418.0	
15	366	177.73	735.2	
16	380	134.83	537.2	
17	409	85.48	316.6	
18	437	105.08	364.3	
19	457	176.59	585.7	
20	497	122.88	374.4	
21	521	181.39	527.2	
22	570	82.17	218.3	
23	589	81.31	209.3	
24	621	67.68	165.2	
25	673	81.24	183.0	
26	10,380	75.00	10.9	Upper Marker

Assay Class: High Sensitivity DNA Assay  
Data Path: C:\...ents and Settings\Bioanalyzer\2013-07-16\2013-07-16\_002.xad

Created: 7/16/2013 3:17:43 PM  
Modified: 7/16/2013 4:00:07 PM

**Electropherogram Summary Continued ...**

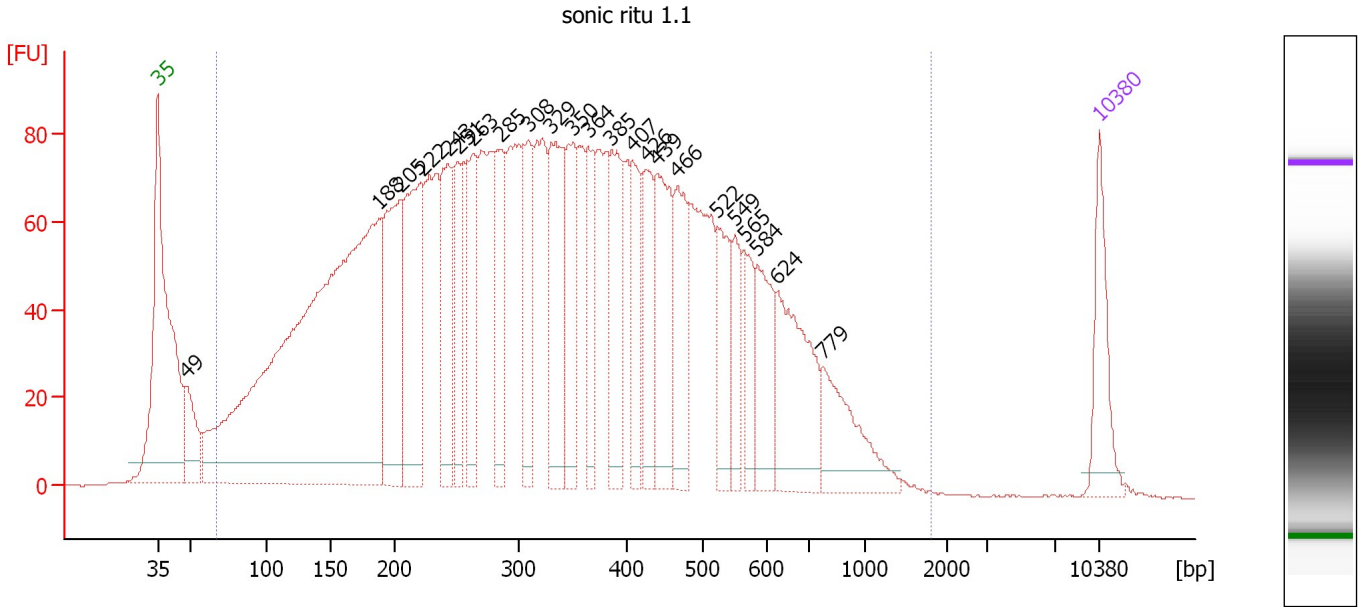
... Region table for sample 10 : sonic ritd 1.1

From [bp]	To [bp]	Average Size [bp]	Molarity [pmol/l]	Conc. [pg/μl]	Corr. Area	% of Total	Size distribution in CV [%]	Color
94	1,000	364	36,180.5	5,913.40	3,244.0	94	48.9	■

Assay Class: High Sensitivity DNA Assay  
 Data Path: C:\...ents and Settings\Bioanalyzer\2013-07-16\2013-07-16\_002.xad

Created: 7/16/2013 3:17:43 PM  
 Modified: 7/16/2013 4:00:07 PM

**Electropherogram Summary Continued ...**



**Overall Results for sample 11 : sonic ritu 1.1**

Number of peaks found: 23                      Corr. Area 1: 3,805.1  
 Noise: 0.1

**Peak table for sample 11 : sonic ritu 1.1**


Peak	Size [bp]	Conc. [pg/μl]	Molarity [pmol/l]	Observations
1	35	125.00	5,411.3	Lower Marker
2	49	92.02	2,864.7	
3	188	1,382.91	11,156.2	
4	205	266.04	1,964.5	
5	222	279.96	1,912.0	
6	243	171.18	1,067.5	
7	251	123.32	745.2	
8	263	141.13	813.2	
9	285	154.81	824.1	
10	308	123.36	607.0	
11	329	191.75	882.8	
12	350	143.52	621.9	
13	364	106.72	444.5	
14	385	136.32	536.5	
15	407	93.51	348.2	
16	426	116.35	413.9	
17	439	173.25	598.5	
18	466	123.13	400.6	
19	522	100.52	292.0	
20	549	66.77	184.4	
21	565	61.15	164.1	
22	584	101.90	264.4	
23	624	180.93	439.4	
24	779	119.44	232.4	
25	10,380	75.00	10.9	Upper Marker

Assay Class: High Sensitivity DNA Assay  
Data Path: C:\...ents and Settings\Bioanalyzer\2013-07-16\2013-07-16\_002.xad

Created: 7/16/2013 3:17:43 PM  
Modified: 7/16/2013 4:00:07 PM

**Electropherogram Summary Continued ...**

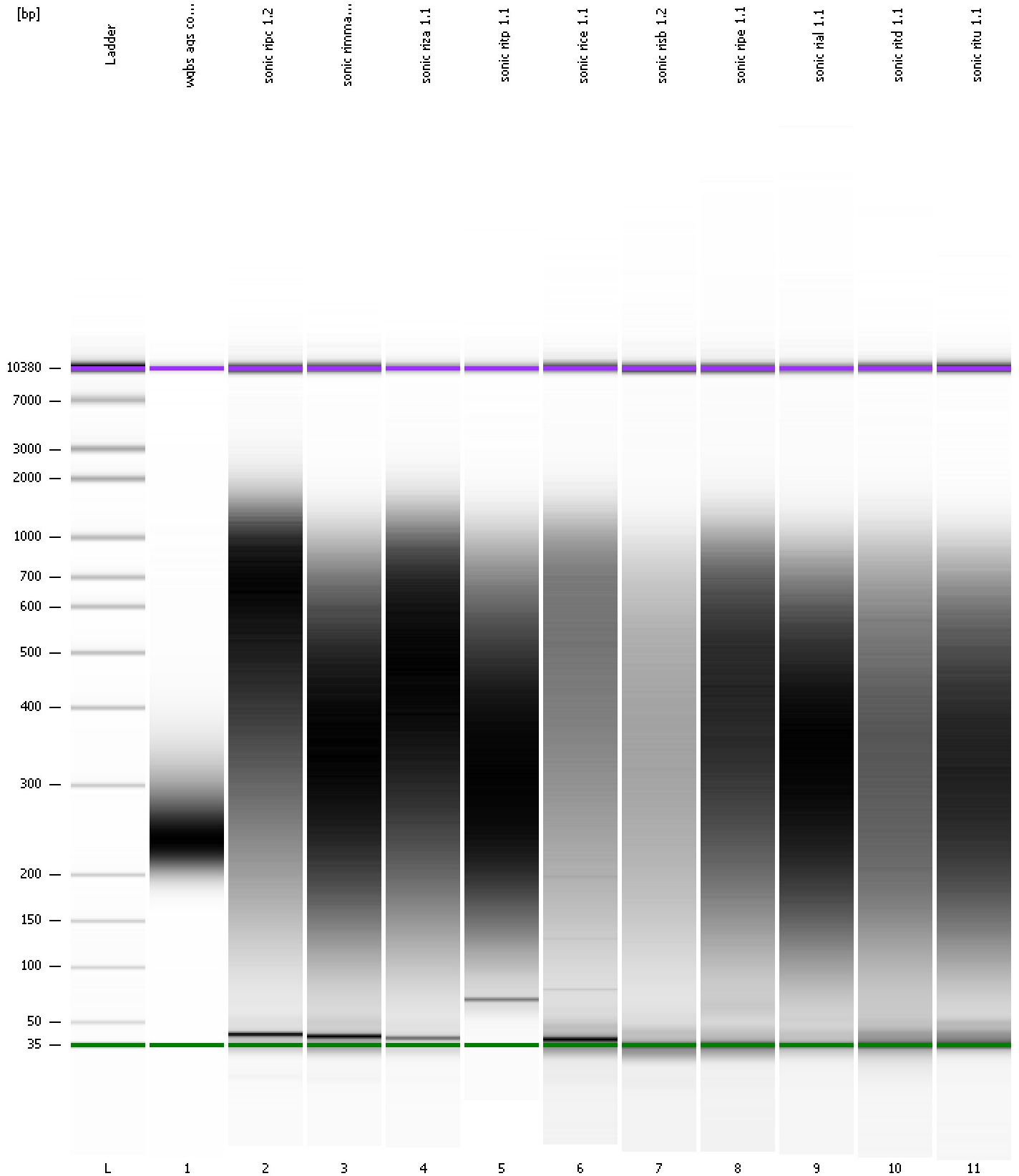
... Region table for sample 11 : sonic ritu 1.1

From [bp]	To [bp]	Average Size [bp]	Molarity [pmol/l]	Conc. [pg/ $\mu$ l]	Corr. Area	% of Total	Size distribution in CV [%]	Color
68	1,802	359	39,839.2	6,147.11	3,805.1	98	52.7	

Assay Class: High Sensitivity DNA Assay  
Data Path: C:\...ents and Settings\Bioanalyzer\2013-07-16\2013-07-16\_002.xad

Created: 7/16/2013 3:17:43 PM  
Modified: 7/16/2013 4:00:07 PM

**Gel Image**





Assay Class: High Sensitivity DNA Assay  
 Data Path: C:\...ents and Settings\Bioanalyzer\2013-07-16\2013-07-16\_002.xad

Created: 7/16/2013 3:17:43 PM  
 Modified: 7/16/2013 4:00:07 PM

**Run Logbook**

Description	Number	Source	Category	Sub Category	Time	Time Zone	User	Host
Run ended on port 1 (Number of wells acquired: 12)		Instrument	Run		7/16/2013 3:59:01 PM	(GMT --07:00) Pacific Standard Time	UC Davis	D8XSMGH1
Run started on port 1 (File: C:\Documents and Settings\Bioanalyzer\2013-07-16\2013-07-16_002.xad)		Instrument	Run		7/16/2013 3:17:48 PM	(GMT --07:00) Pacific Standard Time	UC Davis	D8XSMGH1
Product Number : G2938B		Instrument	Run		7/16/2013 3:17:48 PM	(GMT --07:00) Pacific Standard Time	UC Davis	D8XSMGH1
Name :		Instrument	Run		7/16/2013 3:17:48 PM	(GMT --07:00) Pacific Standard Time	UC Davis	D8XSMGH1
Vendor : Agilent Technologies		Instrument	Run		7/16/2013 3:17:48 PM	(GMT --07:00) Pacific Standard Time	UC Davis	D8XSMGH1
Serial# : DE13701086		Instrument	Run		7/16/2013 3:17:48 PM	(GMT --07:00) Pacific Standard Time	UC Davis	D8XSMGH1
Firmware : C.01.069		Instrument	Run		7/16/2013 3:17:48 PM	(GMT --07:00) Pacific Standard Time	UC Davis	D8XSMGH1
Cartridge : Electrode		Instrument	Run		7/16/2013 3:17:48 PM	(GMT --07:00) Pacific Standard Time	UC Davis	D8XSMGH1