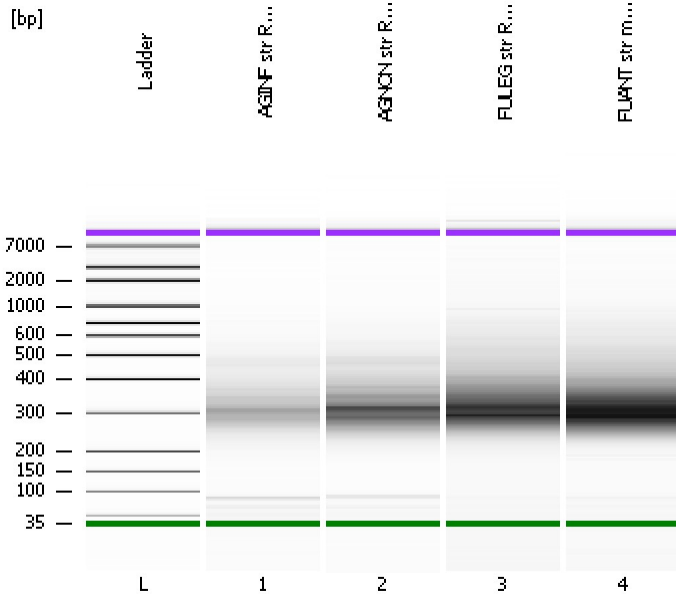


Assay Class: High Sensitivity DNA Assay
 Data Path: C:\...tings\Bioanalyzer\2013-07-19\2013-07-19_002_Str_RNA_Lib.xad

Created: 7/19/2013 1:03:06 PM
 Modified: 9/13/2013 2:14:20 PM

Electrophoresis File Run Summary



Instrument Information:

Instrument Name: DE13701086 Firmware: C.01.069
 Serial#: DE13701086 Type: G2938B

Assay Information:

Assay Origin Path: C:\Program Files\Agilent\2100 bioanalyzer\2100 expert\assays\dsDNA\High Sensitivity DNA.xsy
 Assay Class: High Sensitivity DNA Assay
 Version: 1.03
 Assay Comments: Copyright © 2003-2010 Agilent Technologies

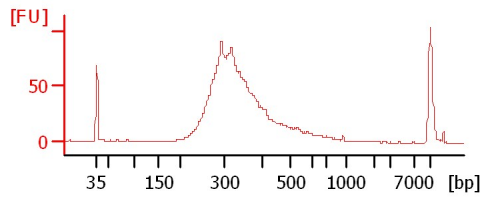
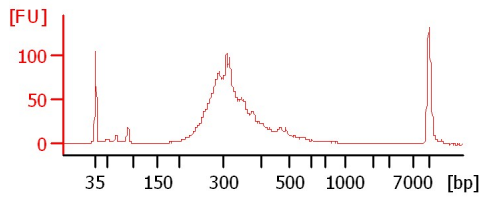
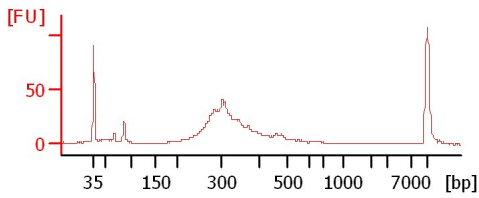
Chip Information:

Chip Lot #:
 Reagent Kit Lot #:
 Chip Comments:

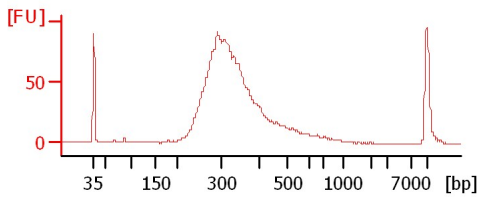
AGINF str RNA Lib

AGNON str RNA Lib

FULEG str RNA Lib 1:2



FUANT str mRNA Lib 1:2



Assay Class: High Sensitivity DNA Assay
 Data Path: C:\...tings\Bioanalyzer\2013-07-19\2013-07-19_002_Str_RNA_Lib.xad

Created: 7/19/2013 1:03:06 PM
 Modified: 9/13/2013 2:14:20 PM

Electrophoresis File Run Summary (Chip Summary)

Sample Name	Sample Comment	Rest. Digest	Status	Observation	Result Label	Result Color
AGINF str RNA Lib		<input type="checkbox"/>				
AGNON str RNA Lib		<input type="checkbox"/>				
FULEG str RNA Lib 1:2		<input type="checkbox"/>				
FUANT str mRNA Lib 1:2		<input type="checkbox"/>				
Ladder		<input type="checkbox"/>				

Chip Lot #

Reagent Kit Lot #

Chip Comments :

Assay Class: High Sensitivity DNA Assay
Data Path: C:\...tings\Bioanalyzer\2013-07-19\2013-07-19_002_Str_RNA_Lib.xad

Created: 7/19/2013 1:03:06 PM
Modified: 9/13/2013 2:14:20 PM

Electrophoresis Assay Details

General Analysis Settings

Number of Available Sample and Ladder Wells (Max.) : 12
Minimum Visible Range [s] : 32
Maximum Visible Range [s] : 138
Start Analysis Time Range [s] : 33
End Analysis Time Range [s] : 137.5
Ladder Concentration [pg/μl] : 1950
Uses Standard Area for Ladder Fragments
Lower Marker Concentration [pg/μl] : 125
Upper Marker Concentration [pg/μl] : 75
Used Upper Marker for Quantitation
Standard Curve Fit is Point to Point
Show Data Aligned to Lower and Upper Marker

Integrator Settings

Integration Start Time [s] : 33.05
Integration End Time [s] : 137
Slope Threshold : 0.8
Height Threshold [FU] : 5
Area Threshold : 0.1
Width Threshold [s] : 0.6
Baseline Plateau [s] : 0.5

Filter Settings

Filter Width [s] : 0.5
Polynomial Order : 4

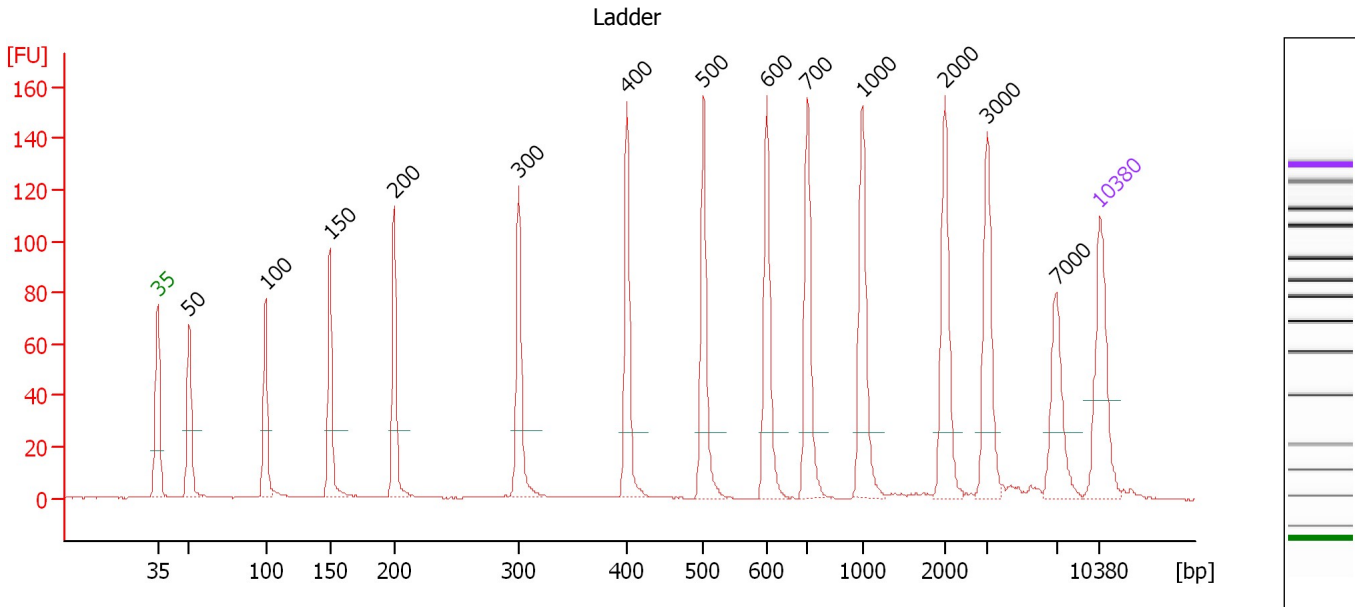
Ladder

Ladder Peak	Size	Area
1	35	160
2	50	210
3	100	208
4	150	221
5	200	242
6	300	270
7	400	305
8	500	306
9	600	336
10	700	321
11	1000	366
12	2000	413
13	3000	411
14	7000	400
15	10380	214

Assay Class: High Sensitivity DNA Assay
 Data Path: C:\...tings\Bioanalyzer\2013-07-19\2013-07-19_002_Str_RNA_Lib.xad

Created: 7/19/2013 1:03:06 PM
 Modified: 9/13/2013 2:14:20 PM

Electropherogram Summary



Overall Results for Ladder

Noise: 0.1

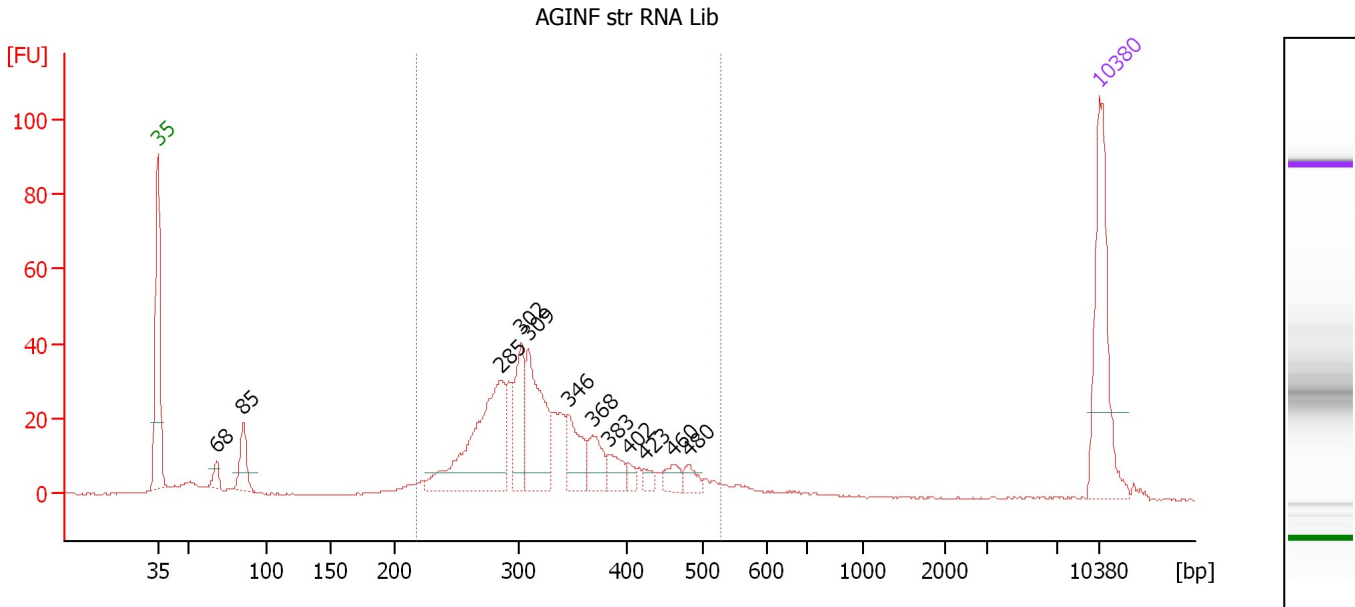
Peak table for Ladder

Peak	Size [bp]	Conc. [pg/μl]	Molarity [pmol/l]	Observations
1	35	125.00	5,411.3	Lower Marker
2	50	150.00	4,545.5	Ladder Peak
3	100	150.00	2,272.7	Ladder Peak
4	150	150.00	1,515.2	Ladder Peak
5	200	150.00	1,136.4	Ladder Peak
6	300	150.00	757.6	Ladder Peak
7	400	150.00	568.2	Ladder Peak
8	500	150.00	454.5	Ladder Peak
9	600	150.00	378.8	Ladder Peak
10	700	150.00	324.7	Ladder Peak
11	1,000	150.00	227.3	Ladder Peak
12	2,000	150.00	113.6	Ladder Peak
13	3,000	150.00	75.8	Ladder Peak
14	7,000	150.00	32.5	Ladder Peak
15	10,380	75.00	10.9	Upper Marker

Assay Class: High Sensitivity DNA Assay
 Data Path: C:\...tings\Bioanalyzer\2013-07-19\2013-07-19_002_Str_RNA_Lib.xad

Created: 7/19/2013 1:03:06 PM
 Modified: 9/13/2013 2:14:20 PM

Electropherogram Summary Continued ...



Overall Results for sample 1 : AGINF str RNA Lib

Number of peaks found: 12 Corr. Area 1: 483.2
 Noise: 0.2

Peak table for sample 1 : AGINF str RNA Lib

Peak	Size [bp]	Conc. [pg/μl]	Molarity [pmol/l]	Observations
1	35	125.00	5,411.3	Lower Marker
2	68	10.20	228.4	
3	85	32.56	578.7	
4	285	145.95	775.8	
5	302	52.72	264.2	
6	309	90.36	443.5	
7	346	37.91	166.2	
8	368	26.63	109.6	
9	383	17.71	70.1	
10	402	6.91	26.1	
11	423	6.11	21.9	
12	460	11.86	39.1	
13	480	10.66	33.6	
14	10,380	75.00	10.9	Upper Marker

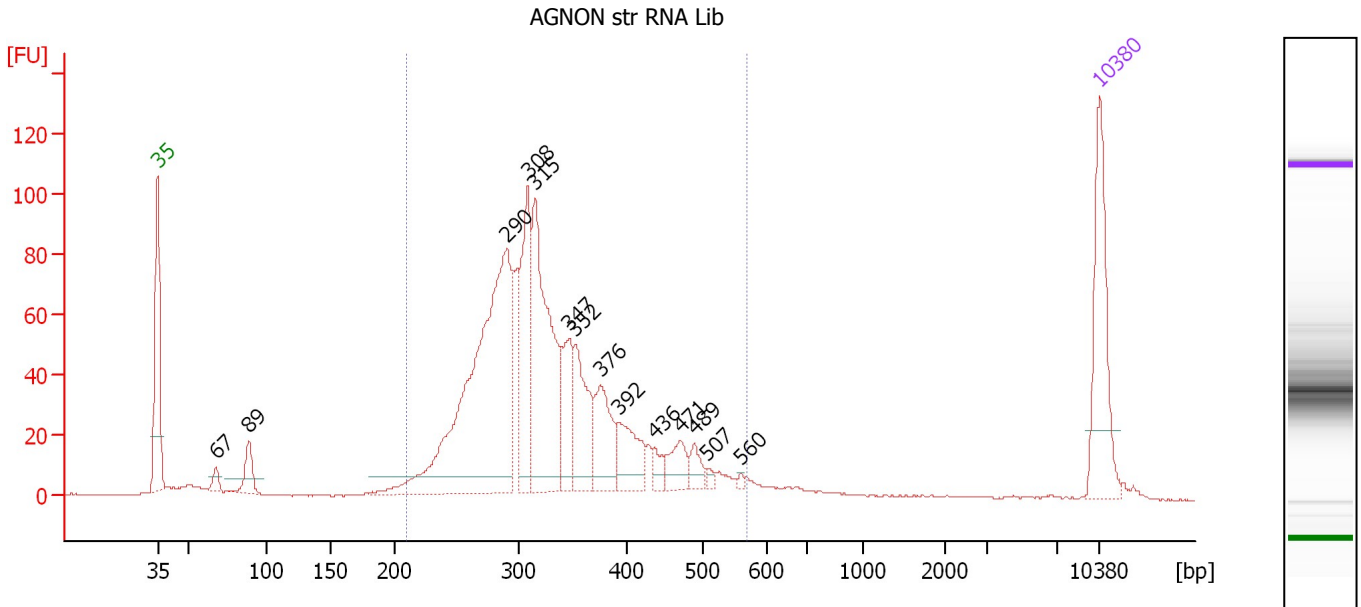
Region table for sample 1 : AGINF str RNA Lib

From [bp]	To [bp]	Average Size [bp]	Molarity [pmol/l]	Conc. [pg/μl]	Corr. Area	% of Total	Size distribution in CV [%]	Color
218	527	330	2,552.4	532.08	483.2	82	19.4	Blue

Assay Class: High Sensitivity DNA Assay
 Data Path: C:\...tings\Bioanalyzer\2013-07-19\2013-07-19_002_Str_RNA_Lib.xad

Created: 7/19/2013 1:03:06 PM
 Modified: 9/13/2013 2:14:20 PM

Electropherogram Summary Continued ...



Overall Results for sample 2 : AGNON str RNA Lib

Number of peaks found: 14 Corr. Area 1: 1,222.2
 Noise: 0.1

Peak table for sample 2 : AGNON str RNA Lib

Peak	Size [bp]	Conc. [pg/μl]	Molarity [pmol/l]	Observations
1	35	125.00	5,411.3	Lower Marker
2	67	10.11	227.1	
3	89	29.19	495.5	
4	290	406.49	2,123.7	
5	308	121.63	597.9	
6	315	196.67	947.2	
7	347	54.51	238.3	
8	352	69.34	298.2	
9	376	59.81	241.3	
10	392	46.33	178.9	
11	436	11.23	39.0	
12	471	24.79	79.8	
13	489	14.19	44.0	
14	507	4.51	13.5	
15	560	2.50	6.8	
16	10,380	75.00	10.9	Upper Marker

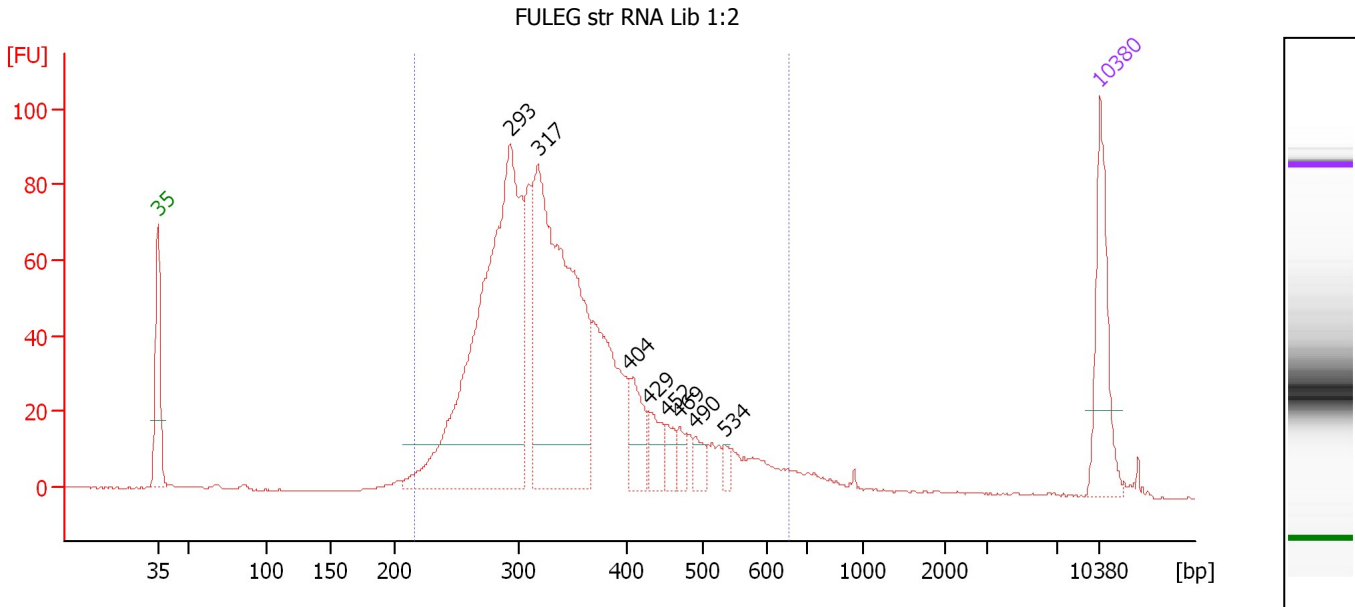
Region table for sample 2 : AGNON str RNA Lib

From [bp]	To [bp]	Average Size [bp]	Molarity [pmol/l]	Conc. [pg/μl]	Corr. Area	% of Total	Size distribution in CV [%]	Color
211	568	331	5,428.5	1,130.32	1,222.2	90	20.5	Blue

Assay Class: High Sensitivity DNA Assay
 Data Path: C:\...tings\Bioanalyzer\2013-07-19\2013-07-19_002_Str_RNA_Lib.xad

Created: 7/19/2013 1:03:06 PM
 Modified: 9/13/2013 2:14:20 PM

Electropherogram Summary Continued ...



Setpoint Deviations for sample 3 : FULEG str RNA Lib 1:2

Height Threshold [FU] : 12

Overall Results for sample 3 : FULEG str RNA Lib 1:2

Number of peaks found: 8 Corr. Area 1: 1,335.4
 Noise: 0.1

Peak table for sample 3 : FULEG str RNA Lib 1:2

Peak	Size [bp]	Conc. [pg/µl]	Molarity [pmol/l]	Observations
1	35	125.00	5,411.3	Lower Marker
2	293	643.32	3,330.1	
3	317	505.89	2,414.8	
4	404	52.30	196.3	
5	429	31.18	110.0	
6	452	20.33	68.2	
7	469	15.64	50.6	
8	490	16.12	49.8	
9	534	9.33	26.5	
10	10,380	75.00	10.9	Upper Marker

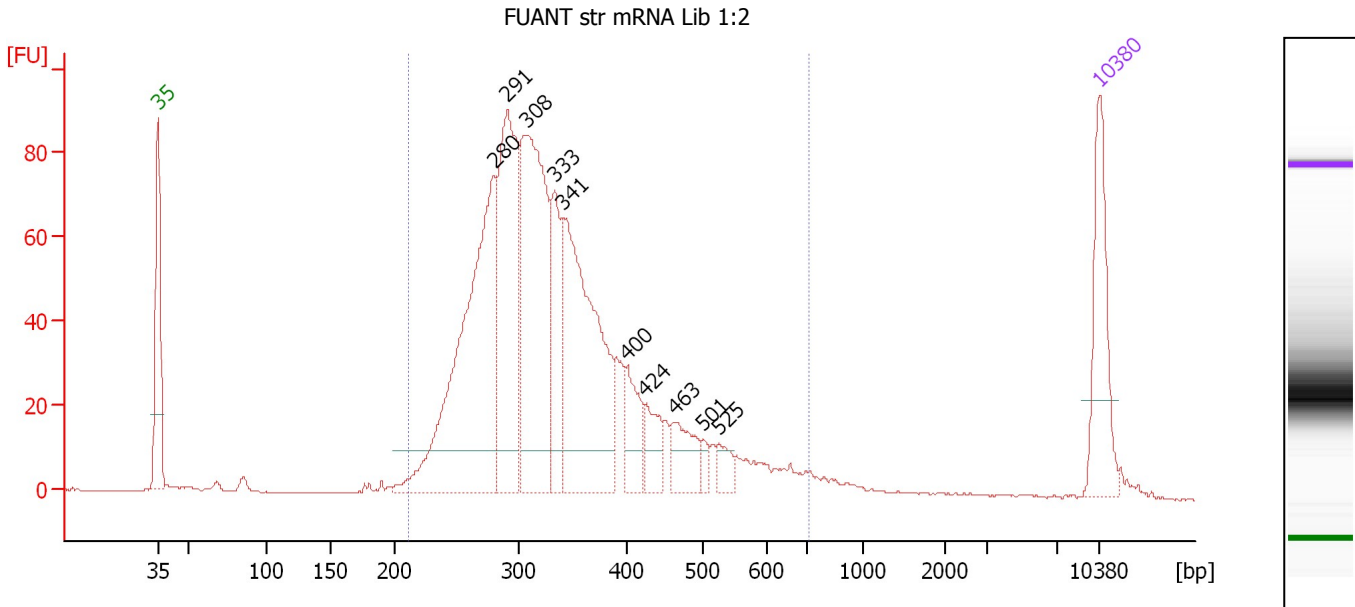
Region table for sample 3 : FULEG str RNA Lib 1:2

From [bp]	To [bp]	Average Size [bp]	Molarity [pmol/l]	Conc. [pg/µl]	Corr. Area	% of Total	Size distribution in CV [%]	Color
217	654	347	7,655.3	1,645.29	1,335.4	95	23.4	Blue

Assay Class: High Sensitivity DNA Assay
 Data Path: C:\...tings\Bioanalyzer\2013-07-19\2013-07-19_002_Str_RNA_Lib.xad

Created: 7/19/2013 1:03:06 PM
 Modified: 9/13/2013 2:14:20 PM

Electropherogram Summary Continued ...



Setpoint Deviations for sample 4 : FUANT str mRNA Lib 1:2

Height Threshold [FU] : 10

Overall Results for sample 4 : FUANT str mRNA Lib 1:2

Number of peaks found: 10 Corr. Area 1: 1,401.6
 Noise: 0.2

Peak table for sample 4 : FUANT str mRNA Lib 1:2

Peak	Size [bp]	Conc. [pg/μl]	Molarity [pmol/l]	Observations
1	35	125.00	5,411.3	Lower Marker
2	280	410.75	2,222.2	
3	291	260.69	1,357.9	
4	308	317.75	1,563.5	
5	333	98.36	447.6	
6	341	298.45	1,325.0	
7	400	48.66	184.5	
8	424	38.10	136.2	
9	463	45.07	147.6	
10	501	10.71	32.4	
11	525	17.93	51.7	
12	10,380	75.00	10.9	Upper Marker

Region table for sample 4 : FUANT str mRNA Lib 1:2

From [bp]	To [bp]	Average Size [bp]	Molarity [pmol/l]	Conc. [pg/μl]	Corr. Area	% of Total	Size distribution in CV [%]	Color
212	710	343	7,888.1	1,668.92	1,401.6	96	24.8	Blue

Assay Class: High Sensitivity DNA Assay
Data Path: C:\...tings\Bioanalyzer\2013-07-19\2013-07-19_002_Str_RNA_Lib.xad

Created: 7/19/2013 1:03:06 PM
Modified: 9/13/2013 2:14:20 PM

Gel Image

