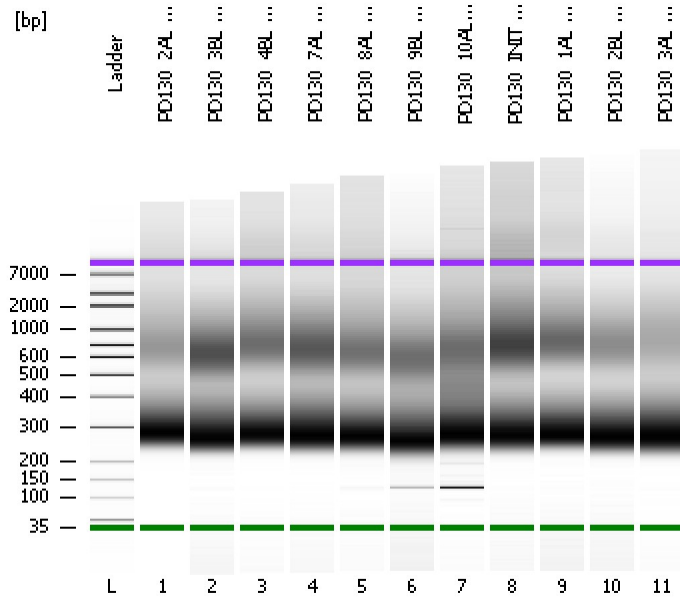


Assay Class: High Sensitivity DNA Assay  
Data Path: C:\...ents and Settings\Bioanalyzer\2013-07-19\2013-07-19\_004.xad

Created: 7/19/2013 3:13:30 PM  
Modified: 7/19/2013 4:29:23 PM

**Electrophoresis File Run Summary**



Instrument Information:

Instrument Name: DE13701086      Firmware: C.01.069  
Serial#: DE13701086      Type: G2938B

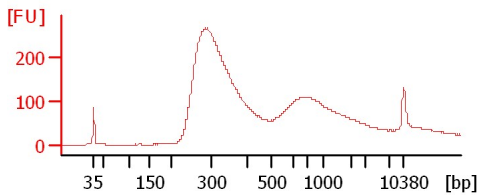
Assay Information:

Assay Origin Path: C:\Program Files\Agilent\2100 bioanalyzer\2100 expert\assays\dsDNA\High Sensitivity DNA.xsy  
Assay Class: High Sensitivity DNA Assay  
Version: 1.03  
Assay Comments: Copyright © 2003-2010 Agilent Technologies

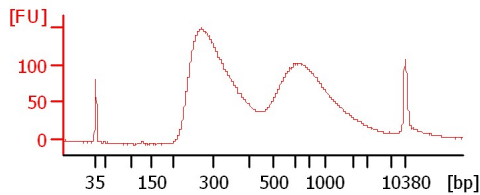
Chip Information:

Chip Lot #:   
Reagent Kit Lot #:   
Chip Comments:

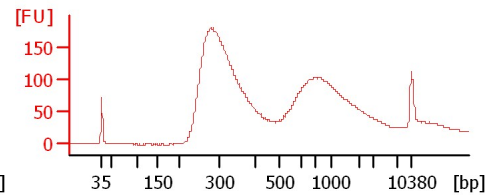
PD130\_2AL 1:5



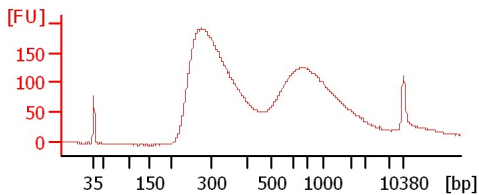
PD130\_3BL 1:4



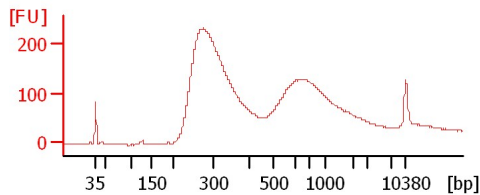
PD130\_4BL 1:5



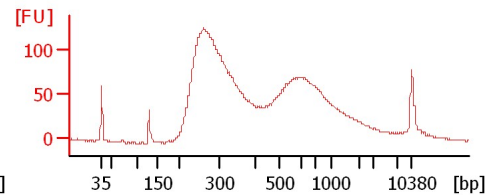
PD130\_7AL 1:4



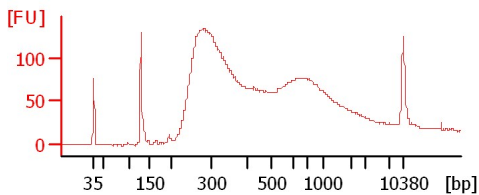
PD130\_8AL 1:4



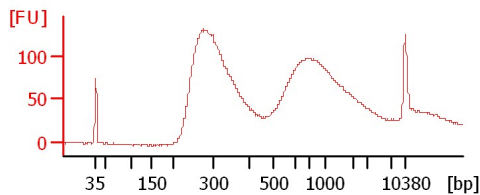
PD130\_9BL 1:3



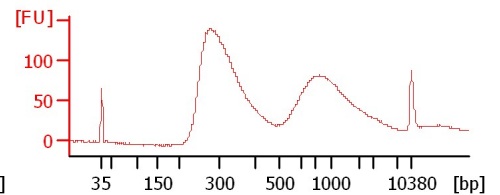
PD130\_10AL 1:3



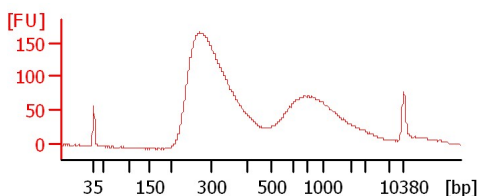
PD130\_INIT BL 1:5



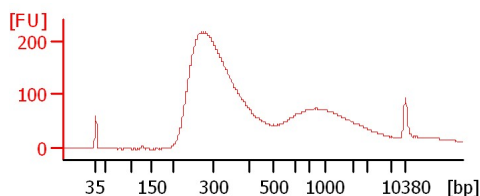
PD130\_1AL 1:5



PD130\_2BL 1:4



PD130\_3AL 1:4



Assay Class: High Sensitivity DNA Assay  
Data Path: C:\...ents and Settings\Bioanalyzer\2013-07-19\2013-07-19\_004.xad

Created: 7/19/2013 3:13:30 PM  
Modified: 7/19/2013 4:29:23 PM

**Electrophoresis File Run Summary (Chip Summary)**

Sample Name	Sample Comment	Rest. Digest	Status	Observation	Result Label	Result Color
PD130_2AL 1:5		<input type="checkbox"/>	✓			
PD130_3BL 1:4		<input type="checkbox"/>	✓			
PD130_4BL 1:5		<input type="checkbox"/>	✓			
PD130_7AL 1:4		<input type="checkbox"/>	✓			
PD130_8AL 1:4		<input type="checkbox"/>	✓			
PD130_9BL 1:3		<input type="checkbox"/>	✓			
PD130_10AL 1:3		<input type="checkbox"/>	✓			
PD130_INIT BL 1:5		<input type="checkbox"/>	✓			
PD130_1AL 1:5		<input type="checkbox"/>	✓			
PD130_2BL 1:4		<input type="checkbox"/>	✓			
PD130_3AL 1:4		<input type="checkbox"/>	✓			
Ladder		<input type="checkbox"/>	✓			

**Chip Lot #**

**Reagent Kit Lot #**

**Chip Comments :**

Assay Class: High Sensitivity DNA Assay  
Data Path: C:\...ents and Settings\Bioanalyzer\2013-07-19\2013-07-19\_004.xad

Created: 7/19/2013 3:13:30 PM  
Modified: 7/19/2013 4:29:23 PM

**Electrophoresis Assay Details**

**General Analysis Settings**

Number of Available Sample and Ladder Wells (Max.) : 12  
Minimum Visible Range [s] : 32  
Maximum Visible Range [s] : 138  
Start Analysis Time Range [s] : 33  
End Analysis Time Range [s] : 137.5  
Ladder Concentration [pg/μl] : 1950  
Uses Standard Area for Ladder Fragments  
Lower Marker Concentration [pg/μl] : 125  
Upper Marker Concentration [pg/μl] : 75  
Used Upper Marker for Quantitation  
Standard Curve Fit is Point to Point  
Show Data Aligned to Lower and Upper Marker

**Integrator Settings**

Integration Start Time [s] : 33.05  
Integration End Time [s] : 137  
Slope Threshold : 0.8  
Height Threshold [FU] : 5  
Area Threshold : 0.1  
Width Threshold [s] : 0.6  
Baseline Plateau [s] : 0.5

**Filter Settings**

Filter Width [s] : 0.5  
Polynomial Order : 4

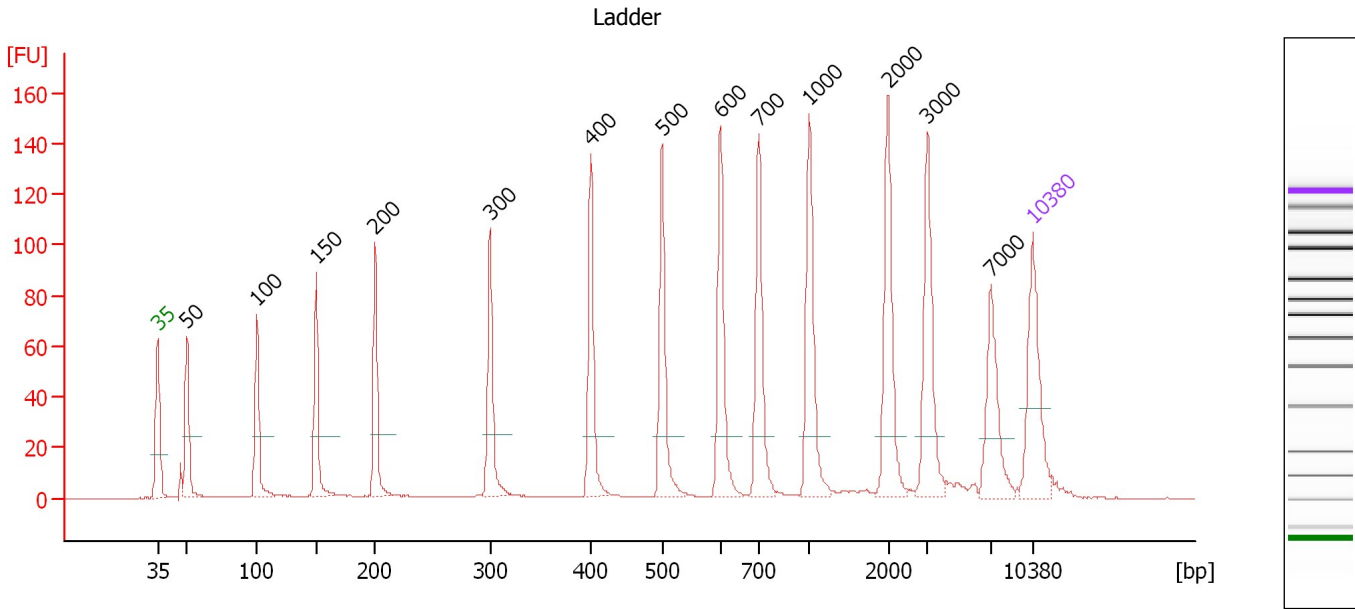
**Ladder**

Ladder Peak	Size	Area
1	35	160
2	50	210
3	100	208
4	150	221
5	200	242
6	300	270
7	400	305
8	500	306
9	600	336
10	700	321
11	1000	366
12	2000	413
13	3000	411
14	7000	400
15	10380	214

Assay Class: High Sensitivity DNA Assay  
 Data Path: C:\...ents and Settings\Bioanalyzer\2013-07-19\2013-07-19\_004.xad

Created: 7/19/2013 3:13:30 PM  
 Modified: 7/19/2013 4:29:23 PM

**Electropherogram Summary**



**Overall Results for Ladder**

Noise: 0.1

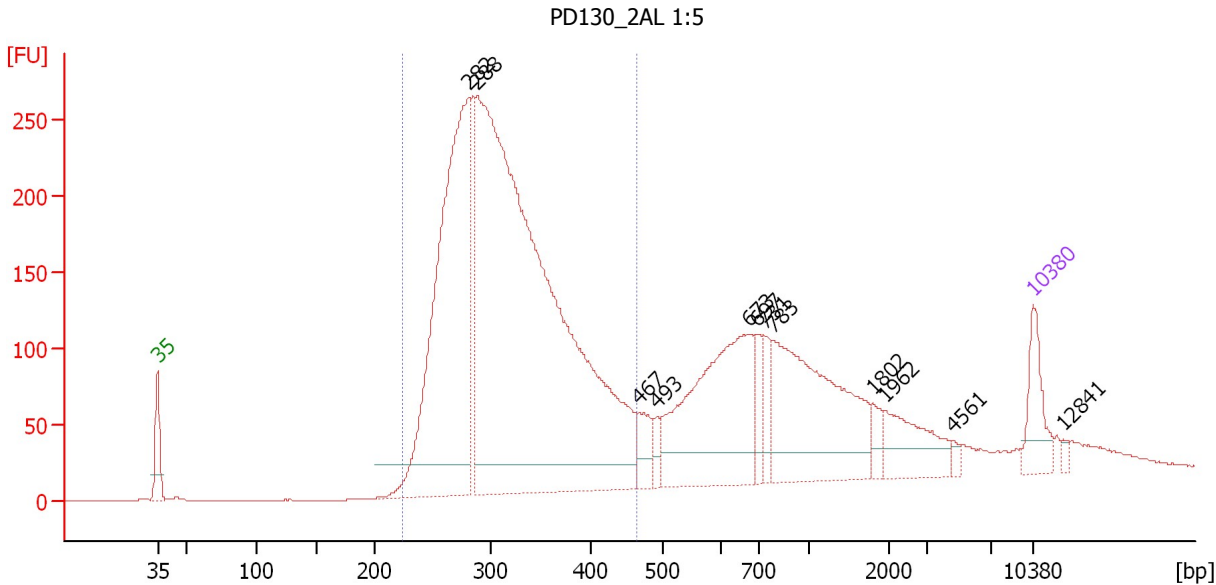
**Peak table for Ladder**

Peak	Size [bp]	Conc. [pg/μl]	Molarity [pmol/l]	Observations
1	35	125.00	5,411.3	Lower Marker
2	50	150.00	4,545.5	Ladder Peak
3	100	150.00	2,272.7	Ladder Peak
4	150	150.00	1,515.2	Ladder Peak
5	200	150.00	1,136.4	Ladder Peak
6	300	150.00	757.6	Ladder Peak
7	400	150.00	568.2	Ladder Peak
8	500	150.00	454.5	Ladder Peak
9	600	150.00	378.8	Ladder Peak
10	700	150.00	324.7	Ladder Peak
11	1,000	150.00	227.3	Ladder Peak
12	2,000	150.00	113.6	Ladder Peak
13	3,000	150.00	75.8	Ladder Peak
14	7,000	150.00	32.5	Ladder Peak
15	10,380	75.00	10.9	Upper Marker

Assay Class: High Sensitivity DNA Assay  
 Data Path: C:\...ents and Settings\Bioanalyzer\2013-07-19\2013-07-19\_004.xad

Created: 7/19/2013 3:13:30 PM  
 Modified: 7/19/2013 4:29:23 PM

**Electropherogram Summary Continued ...**



**Setpoint Deviations for sample 1 : PD130\_2AL 1:5**

Height Threshold [FU] : 20

**Overall Results for sample 1 : PD130\_2AL 1:5**

Number of peaks found: 12                      Corr. Area 1: 3,739.6  
 Noise: 0.1

**Peak table for sample 1 : PD130\_2AL 1:5**

Peak	Size [bp]	Conc. [pg/μl]	Molarity [pmol/l]	Observations
1	35	125.00	5,411.3	Lower Marker
2	282	1,108.35	5,962.8	
3	288	2,555.99	13,462.4	
4	467	66.86	216.8	
5	493	30.21	92.8	
6	673	493.00	1,109.3	
7	697	55.81	121.3	
8	731	49.78	103.1	
9	783	471.65	912.9	
10	1,802	30.81	25.9	
11	1,962	111.84	86.4	
12	4,561	9.60	3.2	
13	10,380	75.00	10.9	Upper Marker
14	12,841	0.00	0.0	

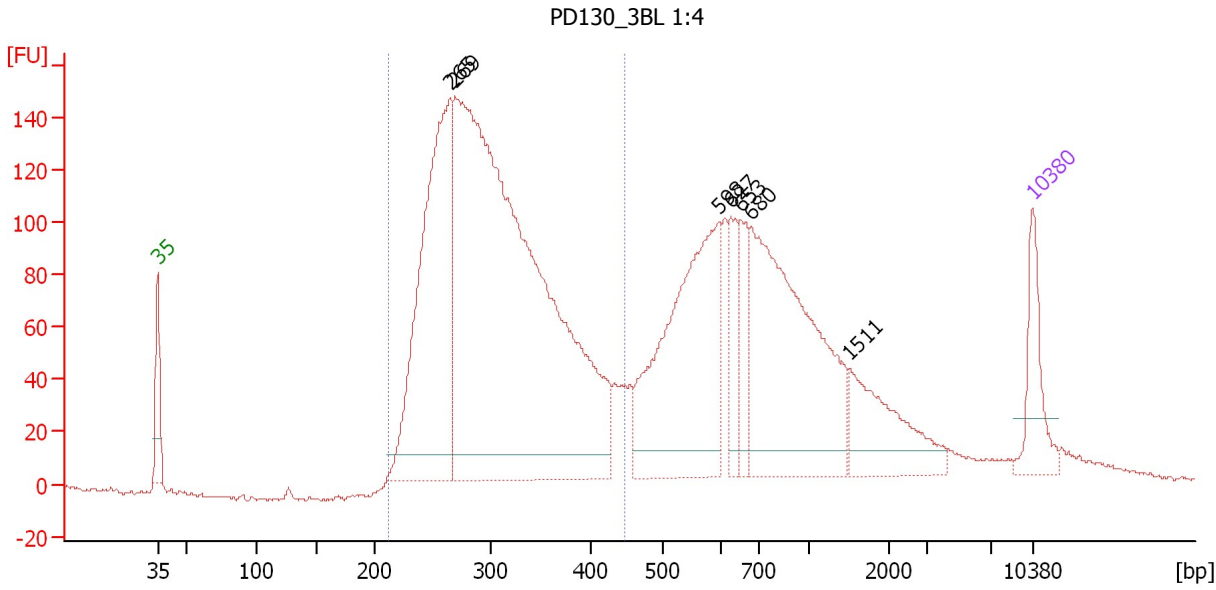
**Region table for sample 1 : PD130\_2AL 1:5**

From [bp]	To [bp]	Average Size [bp]	Molarity [pmol/l]	Conc. [pg/μl]	Corr. Area	% of Total	Size distribution in CV [%]	Color
224	464	319	16,997.4	3,458.11	3,739.6	67	16.2	Blue

Assay Class: High Sensitivity DNA Assay  
 Data Path: C:\...ents and Settings\Bioanalyzer\2013-07-19\2013-07-19\_004.xad

Created: 7/19/2013 3:13:30 PM  
 Modified: 7/19/2013 4:29:23 PM

**Electropherogram Summary Continued ...**



**Setpoint Deviations for sample 2 : PD130 3BL 1:4**

Height Threshold [FU] : 10

**Overall Results for sample 2 : PD130 3BL 1:4**

Number of peaks found: 7                      Corr. Area 1: 2,337.5  
 Noise: 0.6

**Peak table for sample 2 : PD130 3BL 1:4**

Peak	Size [bp]	Conc. [pg/μl]	Molarity [pmol/l]	Observations
1	35	125.00	5,411.3	Lower Marker
2	265	714.96	4,090.0	
3	269	1,940.51	10,913.3	
4	598	483.11	1,223.6	
5	627	83.02	200.5	
6	653	82.22	190.8	
7	680	542.75	1,209.4	
8	1,511	144.40	144.8	
9	10,380	75.00	10.9	Upper Marker

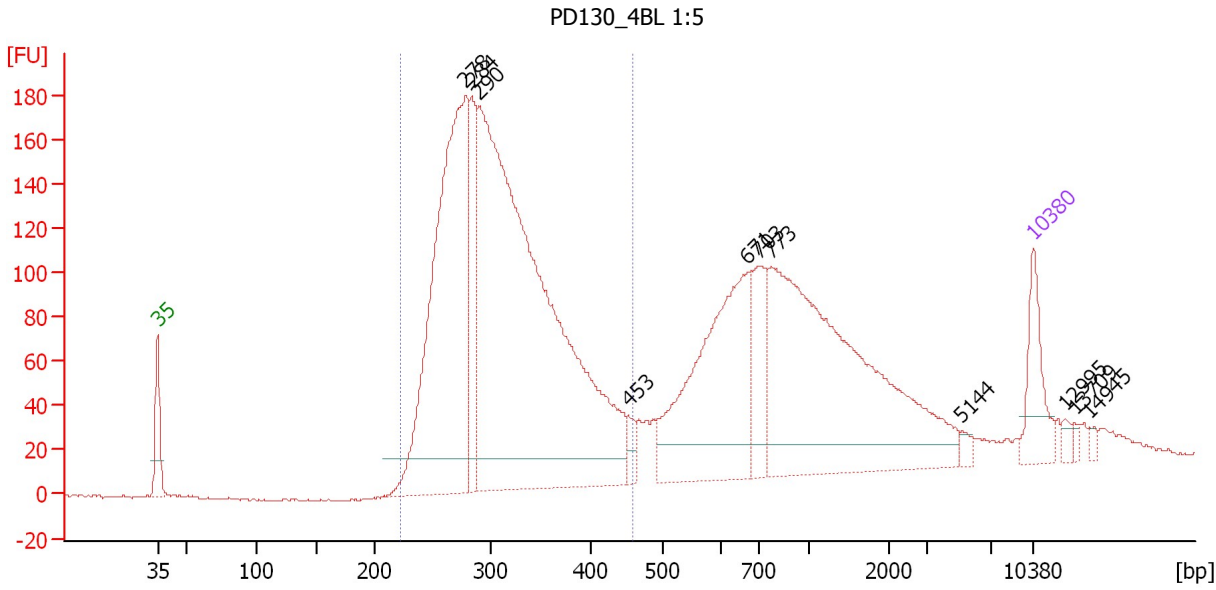
**Region table for sample 2 : PD130 3BL 1:4**

From [bp]	To [bp]	Average Size [bp]	Molarity [pmol/l]	Conc. [pg/μl]	Corr. Area	% of Total	Size distribution in CV [%]	Color
211	447	308	12,928.2	2,530.84	2,337.5	57	17.2	Blue

Assay Class: High Sensitivity DNA Assay  
 Data Path: C:\...ents and Settings\Bioanalyzer\2013-07-19\2013-07-19\_004.xad

Created: 7/19/2013 3:13:30 PM  
 Modified: 7/19/2013 4:29:23 PM

**Electropherogram Summary Continued ...**



**Setpoint Deviations for sample 3 : PD130 4BL 1:5**

Height Threshold [FU] : 15

**Overall Results for sample 3 : PD130 4BL 1:5**

Number of peaks found: 11                      Corr. Area 1: 2,421.8  
 Noise: 0.6

**Peak table for sample 3 : PD130 4BL 1:5**

Peak	Size [bp]	Conc. [pg/μl]	Molarity [pmol/l]	Observations
1	35	125.00	5,411.3	Lower Marker
2	278	915.19	4,980.1	
3	284	172.45	919.7	
4	290	1,689.32	8,833.0	
5	453	24.48	81.9	
6	671	449.40	1,015.1	
7	703	113.87	245.4	
8	773	776.43	1,521.2	
9	5,144	11.21	3.3	
10	10,380	75.00	10.9	Upper Marker
11	12,995	0.00	0.0	
12	13,709	0.00	0.0	
13	14,945	0.00	0.0	

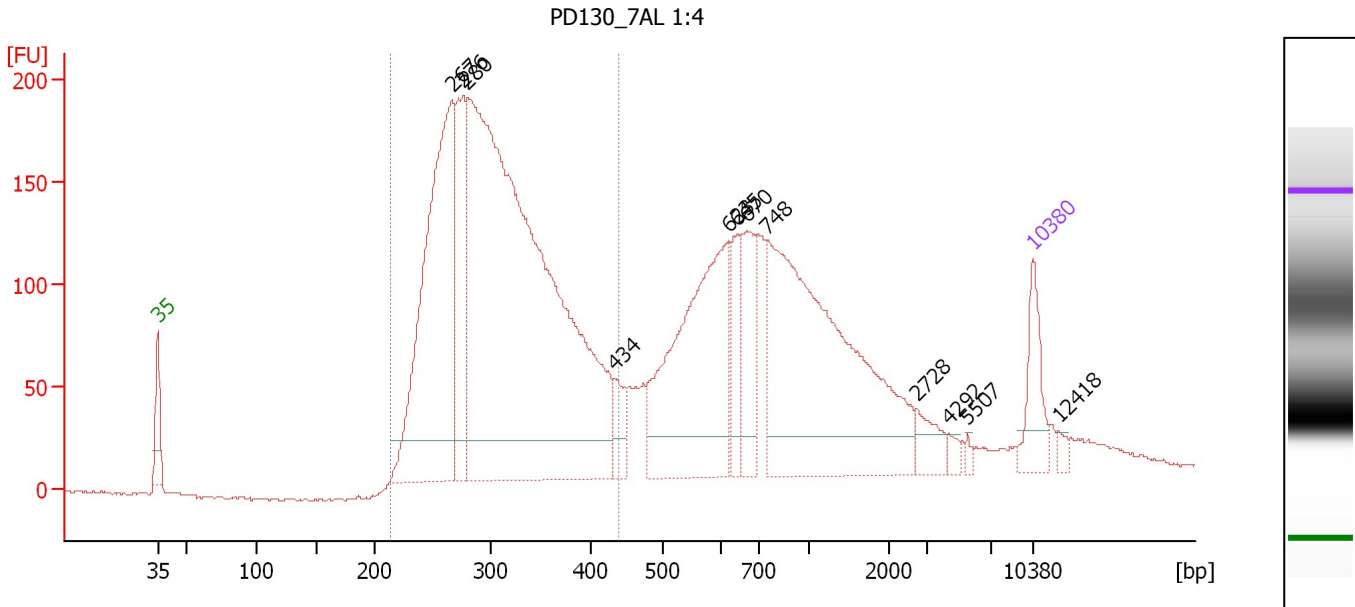
**Region table for sample 3 : PD130 4BL 1:5**

From [bp]	To [bp]	Average Size [bp]	Molarity [pmol/l]	Conc. [pg/μl]	Corr. Area	% of Total	Size distribution in CV [%]	Color
221	460	313	12,549.1	2,514.66	2,421.8	59	16.0	Blue

Assay Class: High Sensitivity DNA Assay  
 Data Path: C:\...ents and Settings\Bioanalyzer\2013-07-19\2013-07-19\_004.xad

Created: 7/19/2013 3:13:30 PM  
 Modified: 7/19/2013 4:29:23 PM

**Electropherogram Summary Continued ...**



**Setpoint Deviations for sample 4 : PD130 7AL 1:4**

Height Threshold [FU] : 20

**Overall Results for sample 4 : PD130 7AL 1:4**

Number of peaks found: 12                      Corr. Area 1: 2,989.1  
 Noise: 1.1

**Peak table for sample 4 : PD130 7AL 1:4**

Peak	Size [bp]	Conc. [pg/μl]	Molarity [pmol/l]	Observations
1	35	125.00	5,411.3	Lower Marker
2	267	832.71	4,732.0	
3	276	257.18	1,411.4	
4	280	2,118.14	11,449.5	
5	434	57.38	200.4	
6	623	516.49	1,256.8	
7	645	86.54	203.4	
8	670	148.73	336.6	
9	748	798.15	1,615.9	
10	2,728	43.28	24.0	
11	4,292	12.48	4.4	
12	5,507	6.53	1.8	
13	10,380	75.00	10.9	Upper Marker
14	12,418	0.00	0.0	

**Region table for sample 4 : PD130 7AL 1:4**

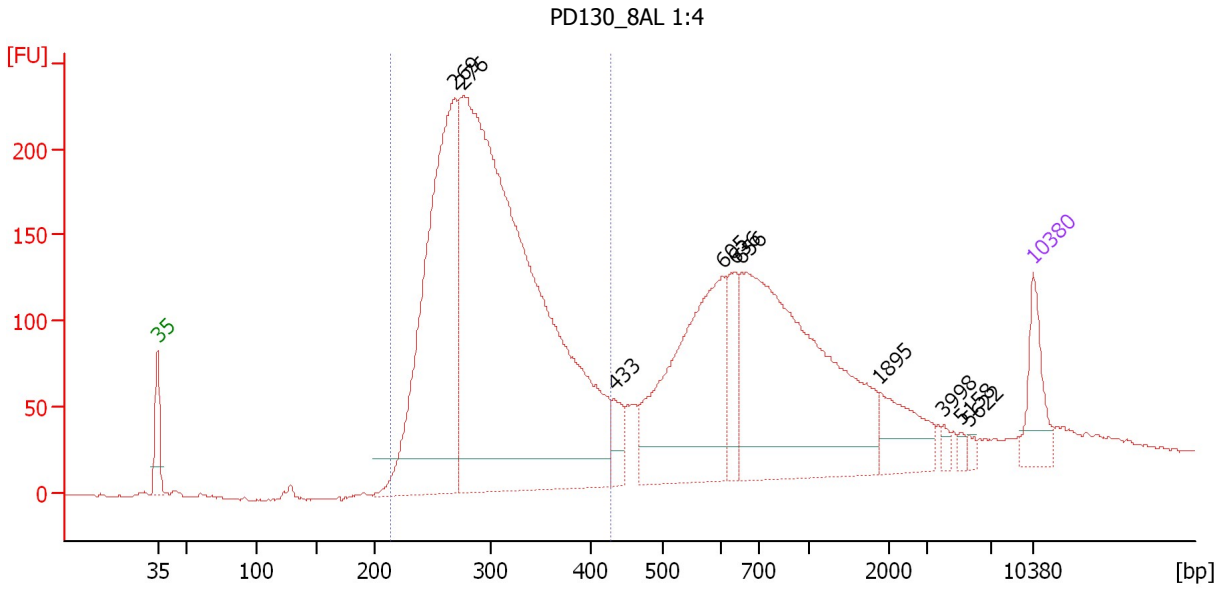
From [bp]	To [bp]	Average Size [bp]	Molarity [pmol/l]	Conc. [pg/μl]	Corr. Area	% of Total	Size distribution in CV [%]	Color
213	439	310	15,426.7	3,051.41	2,989.1	56	16.4	Blue



Assay Class: High Sensitivity DNA Assay  
 Data Path: C:\...ents and Settings\Bioanalyzer\2013-07-19\2013-07-19\_004.xad

Created: 7/19/2013 3:13:30 PM  
 Modified: 7/19/2013 4:29:23 PM

**Electropherogram Summary Continued ...**



**Setpoint Deviations for sample 5 : PD130\_8AL 1:4**

Height Threshold [FU] : 20

**Overall Results for sample 5 : PD130\_8AL 1:4**

Number of peaks found: 10                      Corr. Area 1: 3,148.9  
 Noise: 0.7

**Peak table for sample 5 : PD130\_8AL 1:4**

Peak	Size [bp]	Conc. [pg/μl]	Molarity [pmol/l]	Observations
1	35	125.00	5,411.3	Lower Marker
2	269	990.00	5,569.1	
3	276	2,309.48	12,688.5	
4	433	54.57	190.9	
5	605	507.27	1,271.3	
6	636	91.16	217.0	
7	656	808.30	1,868.3	
8	1,895	102.65	82.1	
9	3,998	12.08	4.6	
10	5,158	8.50	2.5	
11	5,622	9.15	2.5	
12	10,380	75.00	10.9	Upper Marker

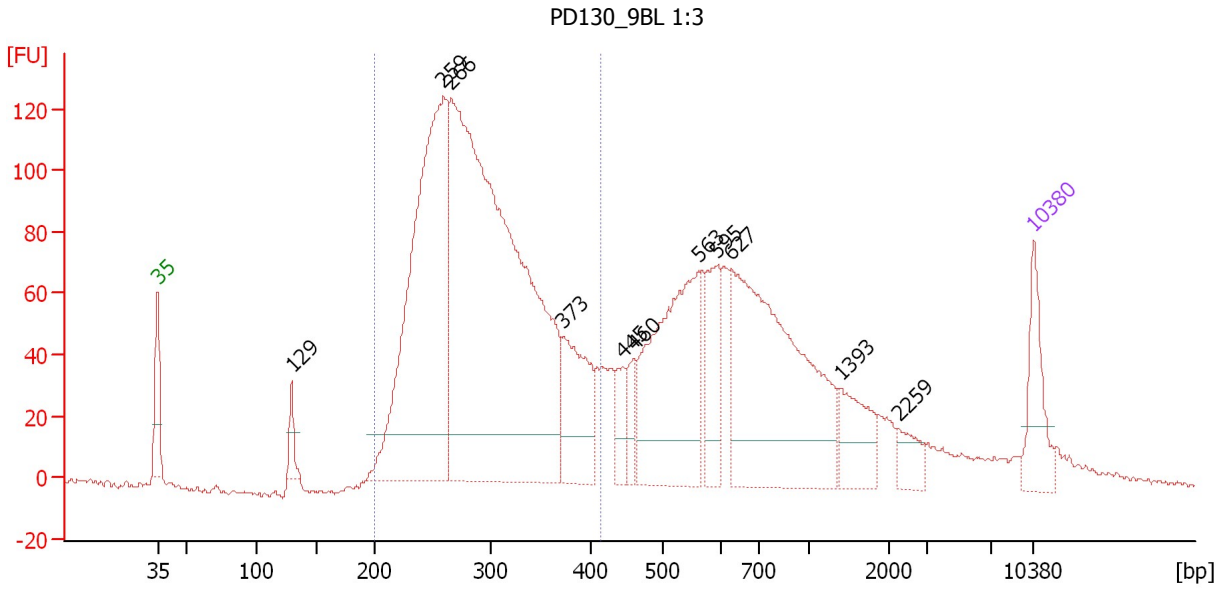
**Region table for sample 5 : PD130\_8AL 1:4**

From [bp]	To [bp]	Average Size [bp]	Molarity [pmol/l]	Conc. [pg/μl]	Corr. Area	% of Total	Size distribution in CV [%]	Color
214	427	304	15,039.0	2,928.29	3,148.9	58	15.4	Blue

Assay Class: High Sensitivity DNA Assay  
 Data Path: C:\...ents and Settings\Bioanalyzer\2013-07-19\2013-07-19\_004.xad

Created: 7/19/2013 3:13:30 PM  
 Modified: 7/19/2013 4:29:23 PM

**Electropherogram Summary Continued ...**



**Setpoint Deviations for sample 6 : PD130\_9BL 1:3**

Height Threshold [FU] : 15

**Overall Results for sample 6 : PD130\_9BL 1:3**

Number of peaks found: 11      Corr. Area 1: 1,959.8  
 Noise: 0.7

**Peak table for sample 6 : PD130\_9BL 1:3**

Peak	Size [bp]	Conc. [pg/μl]	Molarity [pmol/l]	Observations
1	35	125.00	5,411.3	Lower Marker
2	129	42.21	494.2	
3	259	868.56	5,082.3	
4	266	1,614.66	9,198.5	
5	373	180.66	734.0	
6	445	49.32	168.0	
7	460	42.64	140.3	
8	563	377.91	1,017.3	
9	595	107.07	272.8	
10	627	538.84	1,301.7	
11	1,393	85.54	93.1	
12	2,259	32.24	21.6	
13	10,380	75.00	10.9	Upper Marker

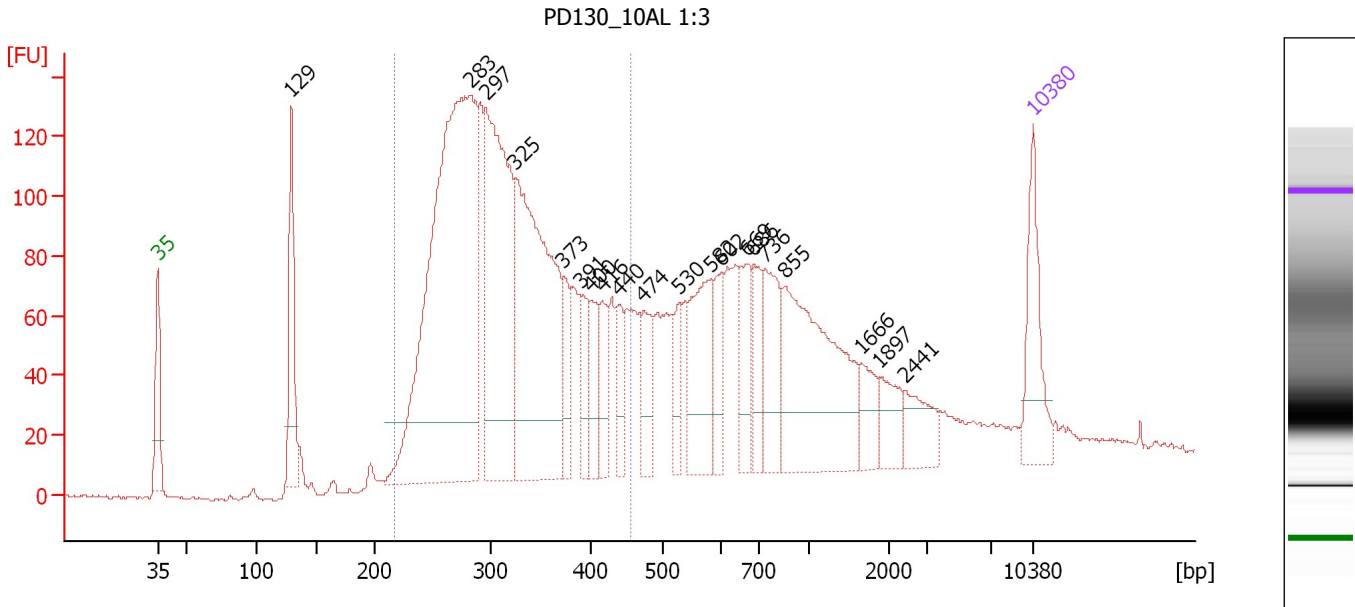
**Region table for sample 6 : PD130\_9BL 1:3**

From [bp]	To [bp]	Average Size [bp]	Molarity [pmol/l]	Conc. [pg/μl]	Corr. Area	% of Total	Size distribution in CV [%]	Color
200	415	295	13,853.7	2,611.45	1,959.8	56	16.9	Blue

Assay Class: High Sensitivity DNA Assay  
 Data Path: C:\...ents and Settings\Bioanalyzer\2013-07-19\2013-07-19\_004.xad

Created: 7/19/2013 3:13:30 PM  
 Modified: 7/19/2013 4:29:23 PM

**Electropherogram Summary Continued ...**



**Setpoint Deviations for sample 7 : PD130 10AL 1:3**

Height Threshold [FU] : 20

**Overall Results for sample 7 : PD130 10AL 1:3**

Number of peaks found: 20                      Corr. Area 1: 2,180.5  
 Noise: 0.5

**Peak table for sample 7 : PD130 10AL 1:3**

Peak	Size [bp]	Conc. [pg/μl]	Molarity [pmol/l]	Observations
1	35	125.00	5,411.3	Lower Marker
2	129	143.66	1,685.8	
3	283	877.61	4,706.1	
4	297	409.37	2,090.2	
5	325	463.98	2,160.1	
6	373	55.24	224.3	
7	391	52.50	203.7	
8	400	50.23	190.4	
9	416	52.55	191.6	
10	440	43.65	150.3	
11	474	68.83	219.9	
12	530	39.44	112.9	
13	582	127.05	330.7	
14	602	48.35	121.7	
15	669	64.65	146.5	
16	686	54.04	119.3	
17	736	94.75	195.1	
18	855	265.56	470.7	
19	1,666	35.17	32.0	
20	1,897	38.88	31.1	
21	2,441	42.70	26.5	
22	10,380	75.00	10.9	Upper Marker

Assay Class: High Sensitivity DNA Assay  
Data Path: C:\...ents and Settings\Bioanalyzer\2013-07-19\2013-07-19\_004.xad

Created: 7/19/2013 3:13:30 PM  
Modified: 7/19/2013 4:29:23 PM

**Electropherogram Summary Continued ...**

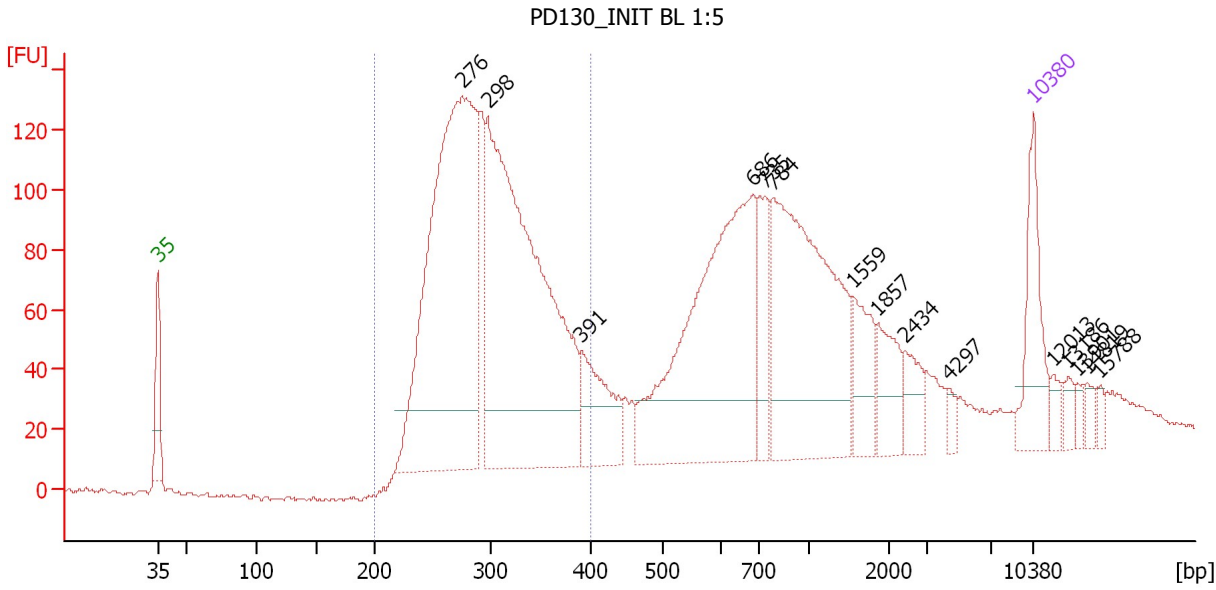
... Region table for sample 7 : PD130\_10AL 1:3

From [bp]	To [bp]	Average Size [bp]	Molarity [pmol/l]	Conc. [pg/μl]	Corr. Area	% of Total	Size distribution in CV [%]	Color
217	456	321	11,166.5	2,272.11	2,180.5	56	17.8	■

Assay Class: High Sensitivity DNA Assay  
 Data Path: C:\...ents and Settings\Bioanalyzer\2013-07-19\2013-07-19\_004.xad

Created: 7/19/2013 3:13:30 PM  
 Modified: 7/19/2013 4:29:23 PM

**Electropherogram Summary Continued ...**



**Setpoint Deviations for sample 8 : PD130\_INIT BL 1:5**

Height Threshold [FU] : 20

**Overall Results for sample 8 : PD130\_INIT BL 1:5**

Number of peaks found: 15                      Corr. Area 1: 1,747.0  
 Noise: 0.9

**Peak table for sample 8 : PD130\_INIT BL 1:5**

Peak	Size [bp]	Conc. [pg/μl]	Molarity [pmol/l]	Observations
1	35	125.00	5,411.3	Lower Marker
2	276	772.31	4,240.5	
3	298	776.58	3,947.5	
4	391	104.48	405.2	
5	686	461.91	1,020.7	
6	735	72.04	148.5	
7	784	384.07	742.3	
8	1,559	59.04	57.4	
9	1,857	52.99	43.2	
10	2,434	32.08	20.0	
11	4,297	9.11	3.2	
12	10,380	75.00	10.9	Upper Marker
13	12,013	0.00	0.0	
14	13,186	0.00	0.0	
15	13,901	0.00	0.0	
16	14,819	0.00	0.0	
17	15,788	0.00	0.0	

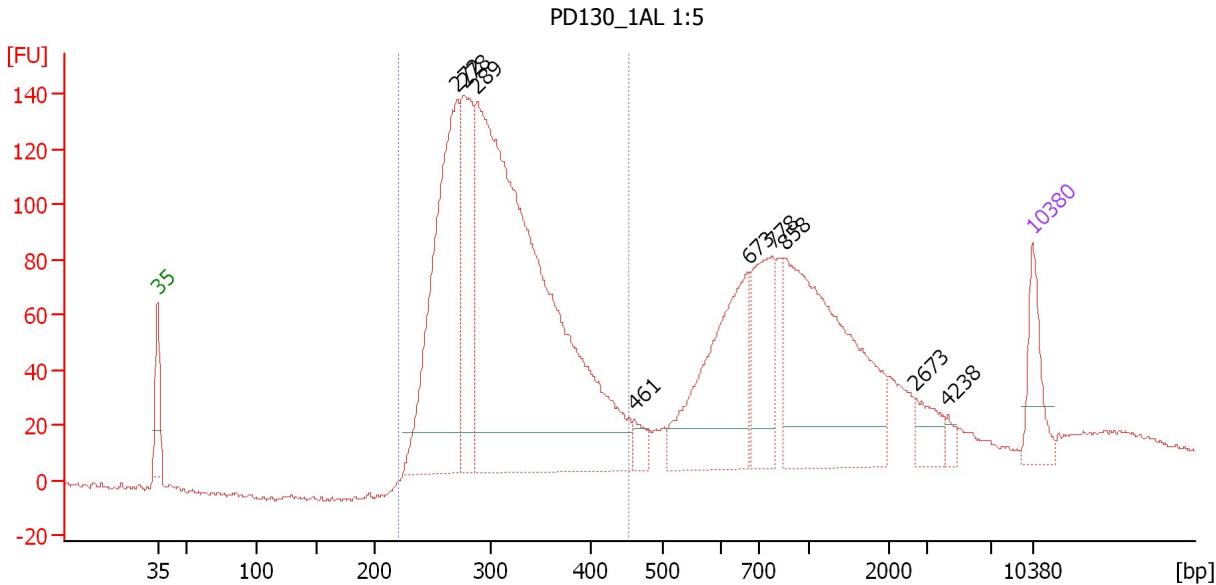
**Region table for sample 8 : PD130\_INIT BL 1:5**

From [bp]	To [bp]	Average Size [bp]	Molarity [pmol/l]	Conc. [pg/μl]	Corr. Area	% of Total	Size distribution in CV [%]	Color
200	401	302	8,481.1	1,652.01	1,747.0	48	14.1	Blue

Assay Class: High Sensitivity DNA Assay  
 Data Path: C:\...ents and Settings\Bioanalyzer\2013-07-19\2013-07-19\_004.xad

Created: 7/19/2013 3:13:30 PM  
 Modified: 7/19/2013 4:29:23 PM

**Electropherogram Summary Continued ...**



**Setpoint Deviations for sample 9 : PD130\_1AL 1:5**

Height Threshold [FU] : 15

**Overall Results for sample 9 : PD130\_1AL 1:5**

Number of peaks found: 9      Corr. Area 1: 1,903.3  
 Noise: 1.1

**Peak table for sample 9 : PD130\_1AL 1:5**

Peak	Size [bp]	Conc. [pg/µl]	Molarity [pmol/l]	Observations
1	35	125.00	5,411.3	Lower Marker
2	272	722.32	4,029.5	
3	278	313.06	1,707.8	
4	289	1,812.65	9,505.4	
5	461	32.19	105.7	
6	673	369.69	832.6	
7	778	192.41	374.5	
8	858	548.12	967.6	
9	2,673	47.68	27.0	
10	4,238	13.81	4.9	
11	10,380	75.00	10.9	Upper Marker

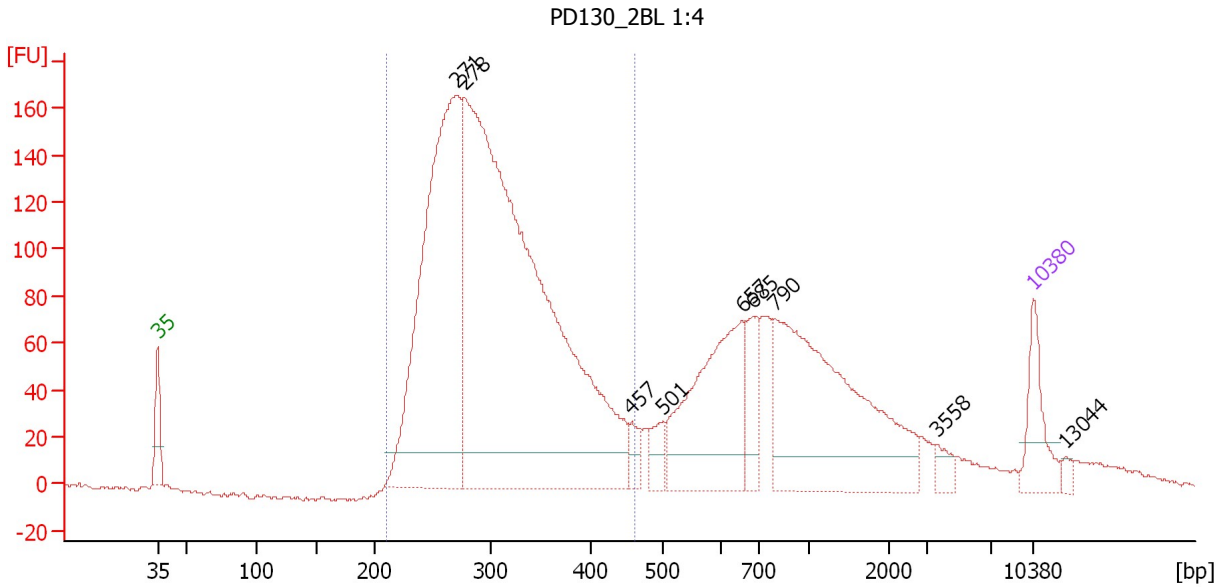
**Region table for sample 9 : PD130\_1AL 1:5**

From [bp]	To [bp]	Average Size [bp]	Molarity [pmol/l]	Conc. [pg/µl]	Corr. Area	% of Total	Size distribution in CV [%]	Color
220	453	313	13,446.1	2,692.06	1,903.3	58	15.6	Blue

Assay Class: High Sensitivity DNA Assay  
 Data Path: C:\...ents and Settings\Bioanalyzer\2013-07-19\2013-07-19\_004.xad

Created: 7/19/2013 3:13:30 PM  
 Modified: 7/19/2013 4:29:23 PM

**Electropherogram Summary Continued ...**



**Setpoint Deviations for sample 10 : PD130\_2BL 1:4**

Height Threshold [FU] : 15

**Overall Results for sample 10 : PD130\_2BL 1:4**

Number of peaks found: 9                      Corr. Area 1: 2,517.0  
 Noise: 0.9

**Peak table for sample 10 : PD130\_2BL 1:4**

Peak	Size [bp]	Conc. [pg/µl]	Molarity [pmol/l]	Observations
1	35	125.00	5,411.3	Lower Marker
2	271	1,053.78	5,893.0	
3	278	2,124.35	11,589.3	
4	457	32.50	107.7	
5	501	44.39	134.3	
6	657	361.83	834.8	
7	685	82.73	182.9	
8	790	579.93	1,112.7	
9	3,558	22.00	9.4	
10	10,380	75.00	10.9	Upper Marker
11	13,044	0.00	0.0	

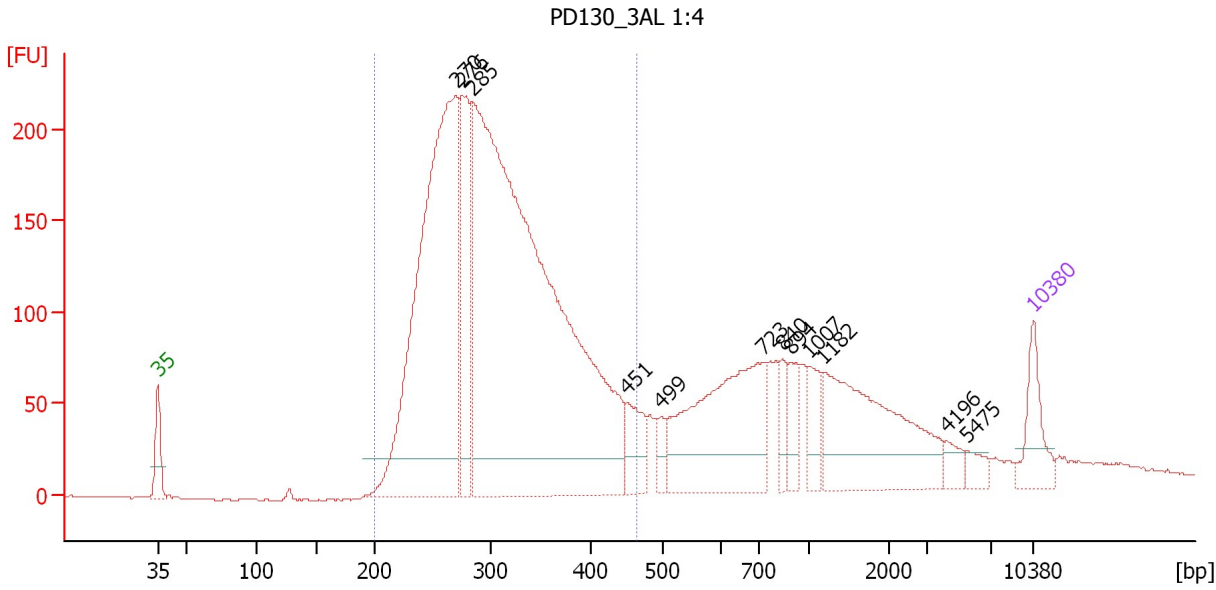
**Region table for sample 10 : PD130\_2BL 1:4**

From [bp]	To [bp]	Average Size [bp]	Molarity [pmol/l]	Conc. [pg/µl]	Corr. Area	% of Total	Size distribution in CV [%]	Color
209	461	308	15,265.1	2,989.61	2,517.0	64	17.4	Blue

Assay Class: High Sensitivity DNA Assay  
 Data Path: C:\...ents and Settings\Bioanalyzer\2013-07-19\2013-07-19\_004.xad

Created: 7/19/2013 3:13:30 PM  
 Modified: 7/19/2013 4:29:23 PM

**Electropherogram Summary Continued ...**



**Setpoint Deviations for sample 11 : PD130\_3AL 1:4**

Height Threshold [FU] : 20

**Overall Results for sample 11 : PD130\_3AL 1:4**

Number of peaks found: 12                      Corr. Area 1: 3,512.6  
 Noise: 0.4

**Peak table for sample 11 : PD130\_3AL 1:4**

Peak	Size [bp]	Conc. [pg/μl]	Molarity [pmol/l]	Observations
1	35	125.00	5,411.3	Lower Marker
2	270	1,299.77	7,287.4	
3	276	300.80	1,651.5	
4	285	2,442.84	12,981.7	
5	451	97.98	329.0	
6	499	32.50	98.7	
7	723	452.79	949.0	
8	840	45.07	81.3	
9	894	59.50	100.8	
10	1,007	62.21	93.6	
11	1,182	367.20	470.8	
12	4,196	26.67	9.6	
13	5,475	25.80	7.1	
14	10,380	75.00	10.9	Upper Marker

**Region table for sample 11 : PD130\_3AL 1:4**

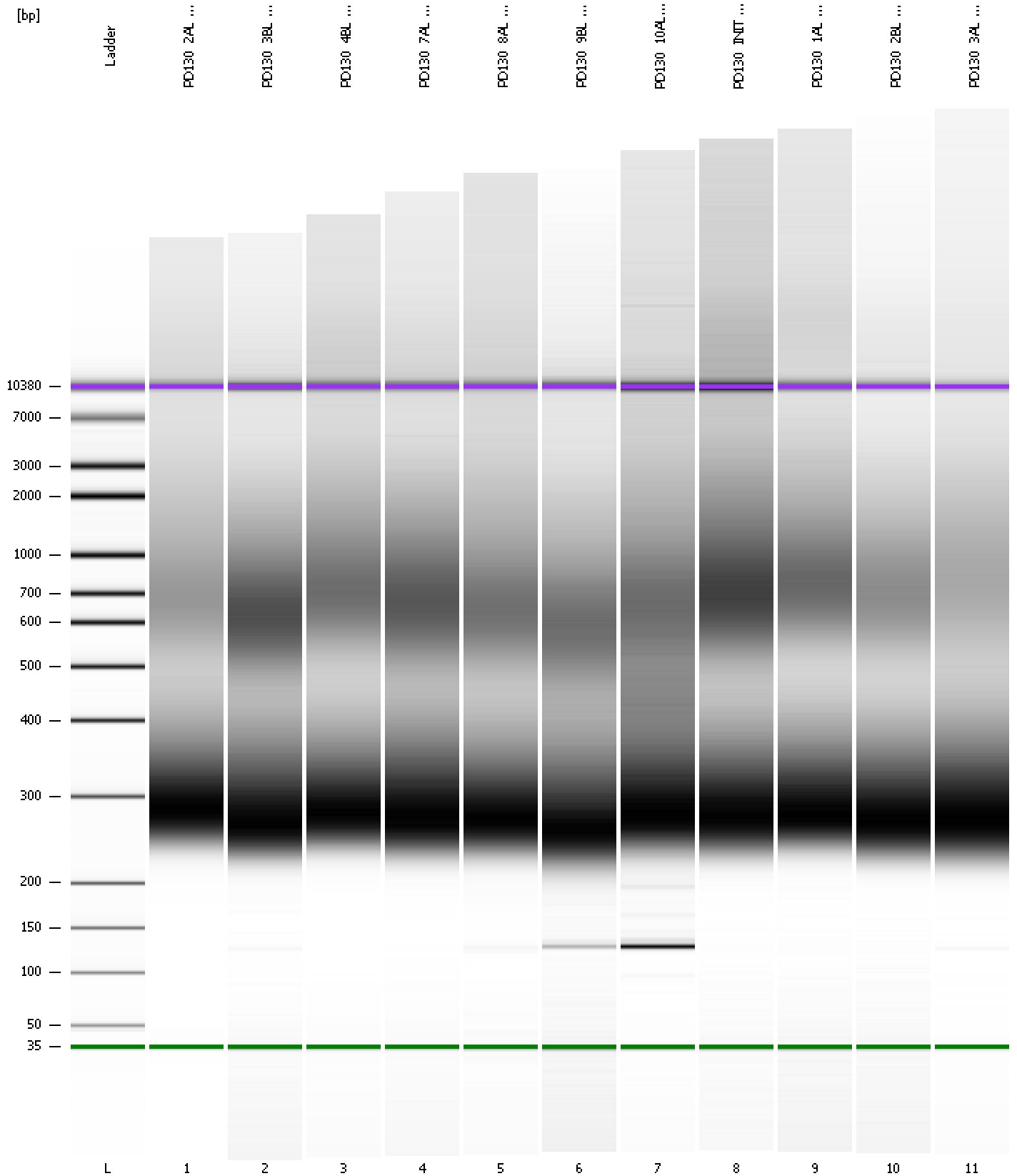
From [bp]	To [bp]	Average Size [bp]	Molarity [pmol/l]	Conc. [pg/μl]	Corr. Area	% of Total	Size distribution in CV [%]	Color
200	465	310	19,764.3	3,879.24	3,512.6	69	18.2	Blue



Assay Class: High Sensitivity DNA Assay  
Data Path: C:\...ents and Settings\Bioanalyzer\2013-07-19\2013-07-19\_004.xad

Created: 7/19/2013 3:13:30 PM  
Modified: 7/19/2013 4:29:23 PM

**Gel Image**



Assay Class: High Sensitivity DNA Assay  
 Data Path: C:\...ents and Settings\Bioanalyzer\2013-07-19\2013-07-19\_004.xad

Created: 7/19/2013 3:13:30 PM  
 Modified: 7/19/2013 4:29:23 PM

**Run Logbook**

Description	Number	Source	Category	Sub Category	Time	Time Zone	User	Host
Run ended on port 1 (Number of wells acquired: 12)		Instrument	Run		7/19/2013 3:53:58 PM	(GMT --07:00) Pacific Standard Time	UC Davis	D8XSMGH1
Run started on port 1 (File: C:\Documents and Settings\Bioanalyzer\2013-07-19\2013-07-19_004.xad)		Instrument	Run		7/19/2013 3:13:35 PM	(GMT --07:00) Pacific Standard Time	UC Davis	D8XSMGH1
Product Number : G2938B		Instrument	Run		7/19/2013 3:13:35 PM	(GMT --07:00) Pacific Standard Time	UC Davis	D8XSMGH1
Name :		Instrument	Run		7/19/2013 3:13:35 PM	(GMT --07:00) Pacific Standard Time	UC Davis	D8XSMGH1
Vendor : Agilent Technologies		Instrument	Run		7/19/2013 3:13:35 PM	(GMT --07:00) Pacific Standard Time	UC Davis	D8XSMGH1
Serial# : DE13701086		Instrument	Run		7/19/2013 3:13:35 PM	(GMT --07:00) Pacific Standard Time	UC Davis	D8XSMGH1
Firmware : C.01.069		Instrument	Run		7/19/2013 3:13:35 PM	(GMT --07:00) Pacific Standard Time	UC Davis	D8XSMGH1
Cartridge : Electrode		Instrument	Run		7/19/2013 3:13:35 PM	(GMT --07:00) Pacific Standard Time	UC Davis	D8XSMGH1